

A nonrandomized phase 2 trial of oral thymic peptides in hospitalized patients with Covid-19

Héctor M. Ramos-Zaldívar, M.D.,^{1,2} Karla G. Reyes-Perdomo, M.D.,^{1,3} Nelson A. Espinoza-Moreno, M.D.,¹ Ernesto Tomás Dox-Cruz,¹ Thania Camila Aguirre Urbina,¹ Astrid Yohaly Rivera Caballero,¹ Eduardo Smelin Perdomo Dominguez,¹ Sofía Guadalupe Peña Calix,¹ Joselin Michelle Monterroso-Reyes,¹ Erick Fernando Caballero Vásquez,¹ Tarek Sai Zelaya Ortiz,¹ Hilbron Eduardo Rodríguez-Machado,¹ Marcelo Andres Forgas Solis, M.D.,¹ Iveth Sebilla Silva,¹ Mauricio Edgardo Zavala Galeano,¹ Alejandro Antonio Morga Alvarado,¹ Angie María Nicolle Solís Medina,¹ Leticia M. Guerrero-Díaz,¹ Julia E. Jiménez-Faraj, M.D.,^{1,4} Caroll Alejandra Perelló Santos, M.D.,^{1,5} Wilberg A. Moncada Arita, M.D.,¹ Darwing Fabricio Valdiviezo Montufar,¹ Josué David Hernández Sabillón,¹ Mónica L. Sorto G.,¹ Xochilt Xiomara Padilla Navarro,¹ Victoria A. Palomo-Bermúdez, M.D.,^{1,5} Héctor Armando Alvarenga Andino, MSc,¹ Sandra Patricia Reyes Guzman, M.D.,⁶ María Haydee Rivera Reyes, M.D.,⁶ Esdras Said Medina Paz, M.D.,⁶ Joselyn Rosario Alvarado Enamorado, M.D.,⁶ Yenny Mariel Sabillón Sagastume, M.D.,⁶ Ariadna Stephanny Mejia Rivera, M.D.,⁶ Claudia Michelle Posas Sarmiento, M.D.,⁶ Xenia Vanessa Jiménez Pineda, M.D.,⁶ Verónica Alejandra Hernández Puerto, M.D.,⁶ Josué David Portillo Landaverde, M.D.,⁶ Sergio Reyes S., M.D.,⁶ Ivin Perdomo R., M.D.,⁶ Josué J. Rivera, M.D.,⁶ Wendy Cecilia Mendoza Girón, M.D.,⁶ Karla Melissa Tróchez Sabillón, M.D.,⁶ Paola Nohemy Katsumata Leiva, M.D.,⁷ Karla Elizabeth Pineda Toro, M.D.,⁷ Jimena A. Montes-Gambarelli, M.D.,¹ Cristhiam Flores, P.G.Cert.,^{1,8} Edison Salas-Huenuleo, Ph.D.,⁹ Marcelo E. Andia, M.D.^{10,11}

1. Grupo de Investigación Médica de la Universidad Católica de Honduras, (GIMUNICAH), Faculty of Medicine, Universidad Católica de Honduras.
2. Doctoral Program in Medical Sciences, Faculty of Medicine, Pontificia Universidad Católica de Chile.
3. Postgraduate Program on Breastfeeding and Nutrition in Children Under the Age of Two, Faculty of Health Sciences, Universidad Mayor, Chile.
4. Hospital Civil de Guadalajara Juan I. Menchaca, México.
5. Hospital del Valle, San Pedro Sula, Honduras.
6. Hospital Santa Bárbara Integrado, Santa Bárbara, Honduras.
7. Triage de Santa Bárbara, Secretaría de Salud de Honduras.
8. Laboratorio de Biología Molecular de San Pedro Sula, Secretaría de Salud de Honduras.
9. Advanced Integrated Technologies, (AINTECH), Santiago, Chile.
10. Biomedical Imaging Center Radiology Department, School of Medicine, Pontificia Universidad Católica de Chile, Santiago, Chile.
11. Millennium Nucleus in Cardiovascular Magnetic Resonance, Santiago, Chile.

Corresponding author: Héctor Miguel Ramos Zaldívar, M.D.

Contact information: Primary email: hramos@unicah.edu

Secondary email: hramos@uc.cl

ORCID iD: <https://orcid.org/0000-0002-0612-8289>

SUPPLEMENTARY INFORMATION

Table of Contents

Supplemental tables	4
<i>Table S1. Aminoacidic composition of Calf Thymus Lysate as determined by Reversed-Phase High Performance Liquid Chromatography after Hydrolysis.</i>	5
<i>Table S2 Variables analyzed for Propensity Score Matching.</i>	6
<i>Table S3. Means and Medians for Participant Recovery by Day 20.</i>	7
<i>Table S4. Means and Medians for Oxygen Therapy Withdrawal by day 20.</i>	8
<i>Table S5. Means and Medians for Length of Hospitalization by day 20.</i>	9
Supplemental figures	10
<i>Figure S1: Kaplan-Meier estimates of time to oxygen therapy withdrawal by day 20</i>	11
<i>Figure S2: Kaplan-Meier estimates of time to discharge by day 20.</i>	12

Supplementary Tables

Table S1.
Aminoacidic composition of Calf Thymus Lysate as determined by Reversed-Phase High Performance Liquid Chromatography after Hydrolysis.

	Amino acid	Micrograms / milliliter	Essential amino acid (E)
1	Aspartic acid	56	-
2	Glutamic acid	73	-
3	Alanine	28	-
4	Arginine	31	E
5	Phenylalanine	28	E
6	Glycine	10	-
7	Histidine	22	E
8	Isoleucine	12	E
9	Leucine	54	E
10	Lysine	66	E
11	Methionine	4	E
12	Proline	15	-
13	Serine	23	-
14	Tyrosine	23	-
15	Threonine	27	E
16	Valine	24	E

Table S2.
Variables analyzed for Propensity Score Matching

1	Age distribution
	≤60
	61-64
	≥ 65
2	Sex
3	Number of comorbidities
4	Diabetes diagnosis
5	Hypertension diagnosis
6	Obesity diagnosis
7	Overweight diagnosis
8	Chronic obstructive pulmonary disease diagnosis
9	Heart failure diagnosis
10	Organ damage other than lung ^a
11	WHO clinical progression score
12	Need for supplemental oxygen
13	Heart rate distribution
	≤40
	41-50
	51-90
	91-110
	111-130
	≥131
14	Systolic blood pressure distribution
	≤90
	90-219
	≥220
15	Respiratory rate distribution
	12-20
	21-24
	≥ 25
16	Oxygen saturation distribution
	<91
	92-93
	94-95
	≥96
17	Temperature distribution
	35.6-37.9
	38-39
	≥39.1
18	Presence of dyspnea

a. Liver damage was defined as elevated liver enzymes, and kidney damage as elevated creatinine level.

Table S3.
Means and Medians for Participant Recovery by Day 20.

Group	Mean ^a				Median			
	Estimate	Std. Error	95% Confidence Interval		Estimate	Std. Error	95% Confidence Interval	
			Lower Bound	Upper Bound			Lower Bound	Upper Bound
Standard care	14.081	1.051	12.021	16.142	12.000	1.519	9.023	14.977
Thymic peptides	8.345	1.272	5.851	10.838	6.000	1.030	3.981	8.019
Overall	11.245	.931	9.420	13.071	10.000	.510	9.000	11.000

a. Estimation is limited to the largest survival time if it is censored.

Table S4.

Means and Medians for Oxygen Therapy Withdrawal by day 20.

Group	Mean^a				Median			
	Estimate	Std. Error	95% Confidence Interval		Estimate	Std. Error	95% Confidence Interval	
			Lower Bound	Upper Bound			Lower Bound	Upper Bound
Standard care	12.692	1.284	10.175	15.209	10.000	1.476	7.106	12.894
Thymic peptides	7.730	1.302	5.177	10.283	4.000	1.642	.781	7.219
Overall	10.220	.994	8.270	12.169	9.000	1.037	6.967	11.033

a. Estimation is limited to the largest survival time if it is censored.

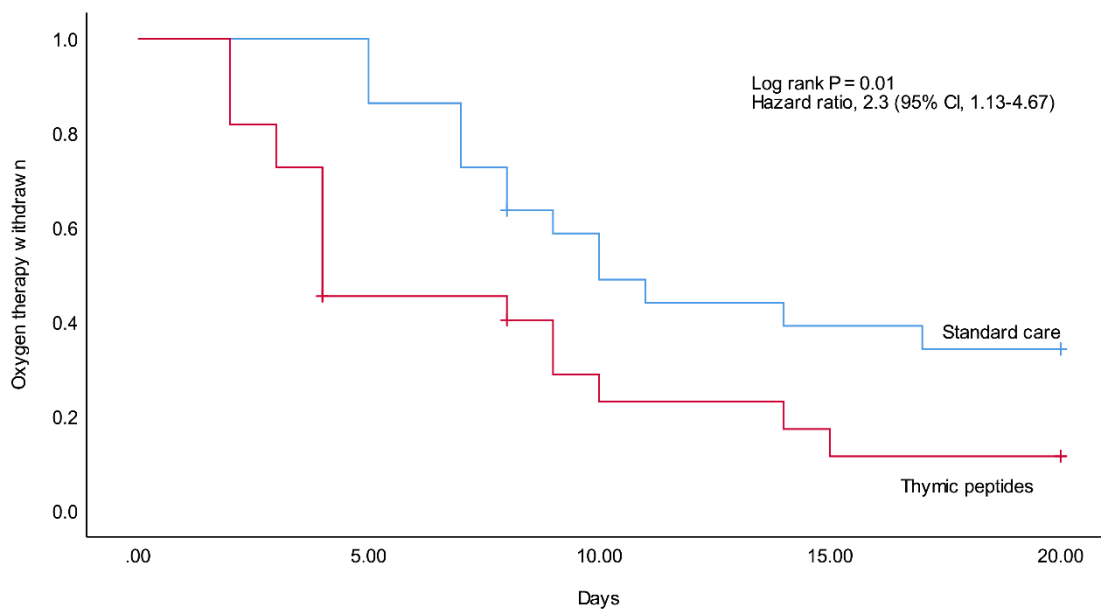
Table S5.**Means and Medians for Length of Hospitalization by day 20.**

Group	Mean^a				Median			
	Estimate	Std. Error	95% Confidence Interval		Estimate	Std. Error	95% Confidence Interval	
			Lower Bound	Upper Bound			Lower Bound	Upper Bound
Standard care	14.129	1.043	12.084	16.174	12.000	1.519	9.023	14.977
Thymic peptides	9.576	1.165	7.293	11.860	6.000	1.278	3.495	8.505
Overall	11.904	.855	10.227	13.581	11.000	.777	9.476	12.524

a. Estimation is limited to the largest survival time if it is censored.

Supplementary Figures

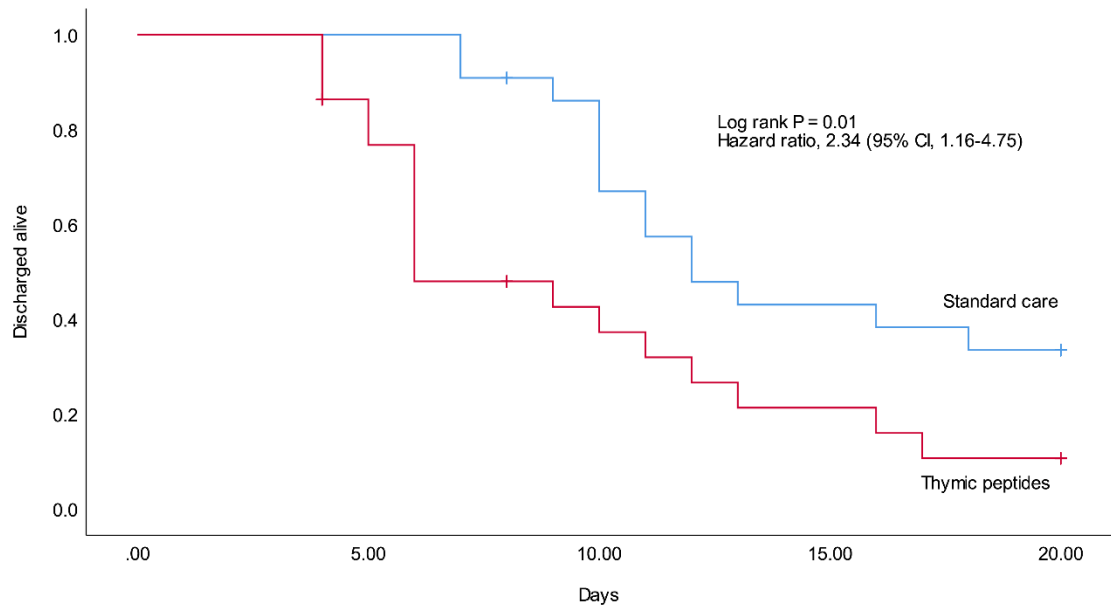
Figure S1: Kaplan-Meier estimates of time to oxygen therapy withdrawal by day 20. The Kaplan-Meier method was used to estimate the cumulative proportion of patients and the log-rank test was used to compare the two groups. The Cox proportional-hazard model was used to estimate the hazard ratio and 95% confidence interval. Vertical dashes indicate censored data.



No. at risk

Standard care	22	22	12	8	7
Thymic peptides	22	9	5	3	2

Figure S2: Kaplan-Meier estimates of time to discharge by day 20. The Kaplan-Meier method was used to estimate the cumulative proportion of patients and the log-rank test was used to compare the two groups. The Cox proportional-hazard model was used to estimate the hazard ratio and 95% confidence interval. Vertical dashes indicate censored data.



No. at risk

Standard care	22	22	18	9	7
Thymic peptides	22	18	8	4	2