

Morimoto and Takahashi et al, 2021

Manuscript Text

1 Title: Ropinirole hydrochloride for amyotrophic lateral sclerosis: A single-center, randomized
2 feasibility, double-blind, placebo-controlled trial

3
4 Authors: Satoru Morimoto, M.D.^{1,2*}, Shinichi Takahashi, M.D.^{1,2,3*}, Daisuke Ito, M.D.², Yugaku
5 Daté, M.D.², Kensuke Okada, M.D.², Chai Muh Chyi, Ph.D.^{1,4}, Ayumi Nishiyama, M.D.⁵, Naoki
6 Suzuki, M.D.⁵, Koki Fujimori, Ph.D.¹, Masaki Takao, M.D.⁶, Miwa Hirai⁷, Yasuaki Kabe,
7 Ph.D.⁷, Makoto Suematsu, M.D.⁷, Masahiro Jinzaki, M.D.⁸, Masashi Aoki, M.D.⁵, Yuto Fujiki⁹,
8 Yasunori Sato, Ph.D.¹⁰, Norihiro Suzuki, M.D.², Jin Nakahara, M.D.², Hideyuki Okano, M.D.¹

9
10 Affiliations:

11 ¹Department of Physiology, Keio University School of Medicine, Tokyo, 160-8582, Japan

12 ²Department of Neurology, Keio University School of Medicine, Tokyo, 160-8582, Japan

13 ³Department of Neurology and Stroke, Saitama Medical University International Medical
14 Center, Saitama, 350-1298, Japan

15 ⁴Keio University Global Research Institute, Tokyo, 108-8345, Japan

16 ⁵Department of Neurology, Tohoku University Graduate School of Medicine, Miyagi, 980-8575,
17 Japan

18 ⁶Department of Clinical Laboratory, National Center of Neurology and Psychiatry (NCNP),
19 Tokyo 187-0031, Japan

20 ⁷Department of Biochemistry, Keio University School of Medicine, Tokyo, 160-8582, Japan

21 ⁸Department of Radiology, Keio University School of Medicine, Tokyo, 160-8582, Japan

22 ⁹Keio University Hospital Clinical and Translational Research Center, Tokyo, 160-8582, Japan

23 ¹⁰Department of Preventive Medicine and Public Health, Keio University School of Medicine,
24 160-8582, Japan

25

26 *Co-first author

27

28 Correspondence:

29 Hideyuki Okano, MD, PhD

30 Dean, Keio University Graduate School of Medicine

31 Professor, Department of Physiology

Morimoto and Takahashi et al, 2021
Manuscript Text

- 1 Keio University School of Medicine
- 2 35 Shinanomachi, Shinjuku-ku
- 3 Tokyo, 160-8582, Japan
- 4 Tel: +81-3-5363-3747
- 5 Fax: +81-3-3357-5445
- 6 email: hidokano@keio.jp

Morimoto and Takahashi et al, 2021

Manuscript Text

1 **ABSTRACT**

2 **Background**

3 We previously used an induced pluripotent stem cell-based drug repurposing approach to
4 demonstrate that ropinirole hydrochloride (ropinirole) attenuated amyotrophic lateral sclerosis
5 (ALS)-specific pathological phenotypes. Here, we assessed the safety and feasibility of
6 ropinirole in ALS patients to verify its efficacy.

7 **Methods**

8 We conducted a randomized feasibility trial of ALS. Twenty participants with ALSFRS-R scores
9 greater than 2 points were randomly assigned using dynamic allocation to receive ropinirole or
10 placebo for 24 weeks in the double-blind period. Upon completion, participants could choose to
11 participate in the following 24-week open-label active extension period. The primary outcomes
12 were safety and tolerability. The secondary outcomes for the feasibility trial objective were the
13 change in the ALS Functional Rating Scale-Revised (ALSFRS-R) score, composite functional
14 endpoint, combined assessment of function and survival, event-free survival, and time to $\leq 50\%$
15 forced vital capacity (blinded outcome assessment). This study is registered with the UMIN
16 Clinical Trials Registry, UMIN000034954.

17 **Findings**

18 Twenty-one participants were randomized into two groups (ropinirole group; n=14) and received
19 ropinirole (n=13) or placebo (n=7) and the data of all participants were analysed using mixed-
20 effects models for repeated measures together. Overall, the incidences of adverse events, most of
21 which had been reported previously, were similar within both groups. Notably, the incidence of
22 gastrointestinal disorders (mainly, temporary mild nausea and diarrhoea) was high at 76.9% in
23 the ropinirole group (14.3% in the placebo group). Regarding the feasibility of verifying
24 efficacy, there were no significant differences in the ALSFRS-R score and combined assessment
25 of function and survival scores during the double-blind period for 6 months, while the
26 participants in the ropinirole group had lived an additional 27.9 weeks without disease
27 progression events compared with the placebo group (log-rank test, 95% confidence interval,
28 4.3–37.4) at 12 months (secondary outcome).

29 **Interpretation**

Morimoto and Takahashi et al, 2021

Manuscript Text

- 1 Ropinirole is safe and tolerable for patients with ALS and this trial indicates feasibility for a
- 2 subsequent large-scale trial.

- 3 **Funding**

- 4 This study was funded by The Japan Agency for Medical Research and Development and K
- 5 Pharma Inc.

Morimoto and Takahashi et al, 2021

Manuscript Text

1 **1 INTRODUCTION**

2 Amyotrophic lateral sclerosis (ALS) is a neurodegenerative disease. The median survival time of
3 patients with ALS is approximately 2 years, and muscle weakness eventually causes respiratory
4 failure and death.¹ Currently, there are two Food and Drug Administration-approved drugs for
5 the treatment of ALS: riluzole and edaravone. Riluzole extends survival by 2–3 months with no
6 reported benefits to muscle strength, whereas edaravone improves short-term functional
7 outcomes but has no statistically significant effect on survival.² Therefore, the need for effective
8 ALS therapies remains unmet.

9 Drug development for diseases of the nervous system has the second-lowest success rate at the
10 pivotal phase compared with other therapeutic areas.³ In particular, neurodegenerative diseases
11 are heterogeneous and the majority of them is sporadic, limiting the translational potential of
12 preclinical animal models. By exploiting induced pluripotent stem cell (iPSC)-derived motor
13 neurons (MNs) generated from patients with ALS, we sought to enable large-scale drug
14 screening and overcome the limitations of preclinical animal models for the development of
15 drugs to treat highly heterogeneous neurodegenerative diseases.⁴

16 Ropinirole hydrochloride (ropinirole) was identified as a treatment candidate for ALS from 1232
17 FDA-approved drugs in a drug screening analysis conducted at Keio University. The analysis
18 examined 3 *FUS*- and 2 *TDP-43* (*TARDBP*)-ALS patient iPSC-derived lower MNs (LMNs) for
19 the suppression of ALS-related phenotypes *in vitro*, such as MN death and damage, neurite
20 regression, mislocalization of FUS and TDP-43, and stress granule formation. Furthermore, we
21 established iPSCs derived from 32 sporadic ALS patients and induced LMNs. Among 32 LMNs,
22 22 of 24 LMNs with cell damage and neurite regression demonstrated increased apoptosis.
23 Finally, we confirmed that ropinirole hydrochloride improved multiple phenotypes of ALS in 16
24 of 22 LMNs (72.73%).⁵

25 Ropinirole is a commonly used drug for Parkinson's disease (PD) that can permeate the blood-
26 brain barrier. Of note, our *in vitro* model suggested that ropinirole was more potent than other
27 ALS drugs and investigational drugs, including riluzole, edaravone, and ceftriaxone.⁵
28 Interestingly, other dopamine D2 receptor agonists such as bromocriptine and pramipexole

Morimoto and Takahashi et al, 2021

Manuscript Text

1 (dexamipexole), have been reported to be candidates for therapeutics for ALS,^{6,7} but these
2 drugs failed to show efficacy in clinical trials had.⁸⁻¹¹

3 Based on the safety profile of ropinirole for PD, we hypothesized that ropinirole would be well
4 tolerated in patients with ALS. Here, we present the results of the Ropinirole Hydrochloride
5 Remedy for Amyotrophic Lateral Sclerosis (ROPALS) single-centre, randomized, placebo-
6 controlled trial, which evaluated the safety and efficacy of ropinirole with the following
7 parameters: ALS Functional Rating Scale-Revised (ALSFRRS-R) score,¹² composite functional
8 endpoint, event-free survival, and time to $\leq 50\%$ forced vital capacity (FVC), of the ropinirole
9 hydrochloride extended-release tablet (Requip CR) in participants with ALS.^{13,14}

10 **2 METHODS**

11 **2.1 STUDY DESIGN AND PATIENTS**

12 The ROPALS trial was an investigator-led, double-blind, placebo-controlled, randomized phase
13 1/2a trial conducted at a single site (Keio University Hospital) in Japan beginning in Dec 2018
14 (figure S1). This trial was approved by the Institutional Review Board of Keio University
15 Hospital (No. D18-01). Participating investigators are listed in Section S1. Participants were
16 followed up for 64 weeks, which comprised a run-in period of 12 weeks followed by a 48-week
17 intervention period and a 4-week follow-up period (figure S1).

18 We conducted this trial in accordance with the Good Clinical Practice guidelines of the
19 International Council for Harmonisation, and the trial protocol was approved by our institutional
20 review board. The trial protocol has been published,¹⁵ and the first and last versions and history
21 of changes in the protocol and statistical analysis plan are available as supplementary files. An
22 independent data monitoring committee was set up for this clinical trial. Written informed
23 consent was provided by participants or their legal representatives. GlaxoSmithKline K.K.
24 (GSK) provided ropinirole extended-release tablets and placebo. Data were collected and
25 analysed by the investigators and an independent company (DOT WORLD Co., Ltd., Tokyo,
26 Japan).

27 This trial included patients with ALS who satisfied all the inclusion criteria (patients with a
28 change in the ALSFRRS-R score within the range of -2 to -5 points during the 12-week run-in
29 period at official registration) and did not meet any of the exclusion criteria (patients with a
30 family history or prior diagnosis of *superoxide dismutase (SOD)-1* mutation). Furthermore,

Morimoto and Takahashi et al, 2021

Manuscript Text

1 concomitant use of riluzole was allowed during the period from obtaining informed consent to
2 the end of the study or to the time of discontinuation. Participants who were not receiving
3 riluzole before providing informed consent were not allowed to start treatment with riluzole after
4 providing informed consent, and the use of edaravone was prohibited. Full details of the
5 inclusion and exclusion criteria are provided in the protocol.

6 **2.2 SAMPLE SIZE**

7 With 20 patients (15 and 5 in the treatment and control groups, respectively), a clinically
8 important adverse event (AE) with a 10% incidence rate in the treatment group can be detected
9 with 80% probability. For the efficacy evaluation, the mean change in ALSFRS-R score from
10 baseline over 24 weeks in the treatment group was assumed to be -5.5 (standard deviation =
11 6.0). Under this assumption, with 80% probability, the sample mean change in the treatment
12 group in this trial was greater than the threshold of -6.8 , calculated from the placebo group in
13 previous confirmatory trials ($n = 99$ and $n = 66$) of ALS patients.^{16,17}

14 **2.3 RANDOMIZATION AND MASKING**

15 After screening, participants were randomly assigned to the active drug or placebo group at a 3:1
16 ratio by DOT WORLD Co. Ltd. through a computer-generated process and web response system
17 with dynamic allocation and minimisation for the number of months after onset (<30 months vs.
18 ≥ 30 months), age (<60 years vs. ≥ 60 years), and total ALSFRS-R score (≤ 36 vs. ≥ 37). The study
19 drugs were assigned and labelled with random numbers according to the randomization table
20 created by DOT WORLD Co. Ltd. personnel who were not involved in conducting the trial or
21 performing the analysis. Patients, investigators, and study staff were not able to access the table
22 and were masked to treatment group assignments.

23 **2.4 PROCEDURES**

24 Study treatment was started at an initial dose of 2 mg per day, followed by increases in the dose
25 once weekly to a maximum of 16 mg per day. After double-blind and open-label extension
26 periods, the dose of the study drug was tapered in accordance with the protocol. Patients were
27 assessed by neurologists for functional grade and neurological and laboratory (blood and urine)
28 findings during the screening period at 4 (only ALSFRS-R and the amount of physical activity),
29 8 (only ALSFRS-R and the amount of physical activity), and 12 weeks after interim registration;

Morimoto and Takahashi et al, 2021

Manuscript Text

1 before the start of the first dose of study treatment; at weeks 5, 9, 13, 17, 21, 24, 27, 31, 35, 39,
2 43, 47, and 50 after the start of study treatment; during the follow-up period; and at the time of
3 discontinuation. The amount of physical activity (METs: metabolic equivalents) was measured
4 every 10 seconds by Active style Pro HJA-750C with a high precision 3D accelerometer
5 (OMRON, Kyoto, Japan) and evaluated as the 4-week mean value. In addition, cerebrospinal
6 fluid (CSF) tests were performed using lumbar puncture before the start of the first dose of the
7 study treatment, before study drug administration at weeks 24 and 50 after the start of study
8 treatment, and at the time of discontinuation. A detailed schedule of the assessments is provided
9 in the protocol. Data were collected with an electronic case-report form using Viedoc (Viedoc
10 Japan K.K., Tokyo, Japan).

11 **2.5 OUTCOMES**

12 In the randomized study, the primary outcomes were AEs, laboratory test values, and the
13 proportion of discontinued subjects during the double-blind period. AEs were graded for severity
14 according to the Common Terminology Criteria for Adverse Events (CTCAE) version 5.0 and
15 relation to the study drug. The secondary outcomes for the feasibility trial objective included the
16 ratio of the change in the ALSFRS-R score every 4 weeks between pre- and posttreatment
17 assessments, change in the ALSFRS-R score,¹² combined assessment of function and survival
18 (CAFS) scores,¹³ amount of physical activity,^{14,18} composite endpoint as a sum of the Z-
19 transformed scores of items (full items are provided in the protocol),¹⁹ time to death or a
20 specified state of disease progression, and time to %FVC of $\leq 50\%$. Exploratory outcomes are
21 provided in the protocol.

22 **2.6 STATISTICAL ANALYSIS**

23 The probability of detecting an AE with a true incidence rate of 10% was 80% with 15 subjects
24 in the treatment group. Additionally, five subjects were randomly assigned to the placebo group
25 to collect efficacy and safety data and eliminate bias.

26 Statistical analyses and reporting of this trial were conducted in accordance with the CONSORT
27 statement guidelines, with the primary analyses based on the intention-to-treat principle. For
28 primary safety analysis, the proportion of AEs was estimated in each treatment group, and the
29 exact 95% confidence interval (CI) was calculated by the binomial distribution.

30 The secondary outcomes for efficacy were analysed using an analysis-of-covariance (ANCOVA)

Morimoto and Takahashi et al, 2021

Manuscript Text

1 model with fixed-effect terms for the study group and the corresponding baseline value as a
2 covariate. The change-from-baseline means are the least-squares means from the ANCOVA
3 model during the 24-week treatment period. For the sensitivity analysis, mean changes from
4 baseline were analysed using a restricted maximum likelihood (REML)-based repeated measures
5 approach in combination with the Newton Raphson algorithm. The mixed model for repeated
6 measures (MMRM) analyses included the fixed, categorical effects of treatment, visit, and
7 treatment by visit interaction. A common unstructured covariance structure was used for
8 modelling within the patient error. If this analysis failed to converge, the following structures
9 were tested until model convergence was achieved: Toeplitz, autoregressive, or compound-
10 symmetry structures. The Kenward-Roger approximation was used to estimate the denominator
11 degrees of freedom. The calculation of risk difference and 95% CI according to the Newcombe-
12 Wilson method was added to the efficacy endpoints. No adjustments were made for the multiple
13 testing of secondary outcomes because of the exploratory nature of the study. Missing values in
14 outcome variables were not imputed because mixed models can handle missing data by
15 maximum likelihood.

16
17 For time to event, the Kaplan–Meier method was applied to assess overall survival, and
18 competing risk analyses using the Cox model for time to death or a specified state of disease
19 progression and the Fine and Grey model for time to %FVC of $\leq 50\%$ were performed to assess
20 disease progression times. Cumulative incidence curves are presented for each treatment group.
21 All comparisons were planned, and all p values are two-sided. A p value < 0.05 was considered
22 statistically significant. All statistical analyses were performed using SAS software version 9.4
23 (SAS Institute Inc., Cary, NC, USA) and described in the statistical analysis plan, which was
24 fixed prior to database locking. The trial was reported to the Japanese Pharmaceuticals and
25 Medical Devices Agency (PMDA) (No. 2020-7717) and prospectively registered with the UMIN
26 Clinical Trials Registry (number UMIN000034954) on November 30, 2018.

27

28 **Role of the funding source**

29 The role of GSK was in providing ropinirole extended-release tablets and placebo and that of K
30 Pharma was in funding.

31

Morimoto and Takahashi et al, 2021

Manuscript Text

1 **3 RESULTS**

2 **3.1 CHARACTERISTICS OF PARTICIPANTS**

3 From December 3, 2018, to September 12, 2019, we screened 29 participants, of whom 21
4 completed the run-in period and were randomized. Before drug administration, 1 participant
5 withdrew due to protocol deviation. Among the remaining 20 participants, 13 received
6 ropinirole, and 7 received placebo. Of the 18 participants who completed the last dose at week 24
7 in the double-blind period, 8 completed follow-up visits 24 days after the last dose at week 48 in
8 the open-label active extension period (figure 1).

9 This was a small-scale phase 1/2a randomized control trial, and two more subjects were allocated
10 to the placebo group than planned; therefore, the number of subjects in the placebo group was
11 seven with an allocation ratio of 2:1. According to Kang et al, at the initial stages of a clinical
12 study or for trials with small sample sizes, using simple randomization can cause an extreme
13 imbalance among the treatment groups by random chance alone.²⁰

14 Table 1 summarizes the demographic and baseline characteristics of the 20 participants who
15 were randomized and received treatments. All participants were diagnosed with sporadic ALS
16 with no detectable known pathogenic mutations in ALS causative genes (supplementary
17 method). Both treatment groups had similar yet high proportions of participants with \leq grade 2
18 ALS severity. The ropinirole group had a longer disease duration (median: 24 months) than the
19 control group (median: 17 months). Nevertheless, the total ALSFRS-R scores at pre-observation
20 and baseline were balanced in both groups.

21 **3.2 PRIMARY OUTCOME**

22 For the safety analyses, AEs and anticipated AEs were reported for all 20 participants in the
23 double-blind period and 17 participants in the open-label extension period (table 2A, B).

24 During the double-blind period, one death occurred in the placebo group (idiopathic ischaemic
25 heart disease on day 157), which was attributed to disease progression by the investigators. No
26 participant discontinued treatment due to adverse experiences in either treatment group. In total,
27 92.3% (12/13) and 85.7% (6/7) of participants experienced at least one AE in the ropinirole
28 group and the placebo group, respectively. AEs that occurred in \geq 10% of participants in both

Morimoto and Takahashi et al, 2021

Manuscript Text

1 treatment groups included gastrointestinal disorders (14.3% for placebo and 76.9% for
2 ropinirole) and infection and infestations (28.6% for placebo and 23.1% for ropinirole).
3 Ropinirole-related AEs occurring in $\geq 20\%$ of participants included constipation (61.5%), nausea
4 (38.5%), somnolence (30.8%), and headache (23.1%). No statistically significant abnormalities
5 were detected for conventional clinical laboratory measurements or CSF tests.

6 During the open-label active extension period, at least one AE occurred in 91.7% of participants
7 in the ropinirole-ropinirole (RR) treatment group and 80% of participants in the placebo-
8 ropinirole (PR) treatment group. The highest incidence of AEs ($\geq 20\%$ in any treatment group)
9 was related to nervous-system disorders (40% in the PR group and 58.3% in the RR group),
10 infections and infestations (60% in the PR group and 41.7% in the RR group), and general
11 disorders and administration-site conditions (60% in the PR group and 33.3% in the RR group).
12 Extended ropinirole treatment was associated with a higher frequency of somnolence (40%) and
13 constipation (60%). Pharmacokinetic data are summarized in figure S2 and table S1.

14 **3.3 SECONDARY OUTCOMES**

15 **3.3.1 Functional outcomes**

16 During the double-blind period, the mean ALSFRS-R slope per month before and after treatment
17 was 1.042 (95% CI, 0.249 to 1.835) in the ropinirole group compared with 1.254 (95% CI, 0.165
18 to 2.344) in the placebo group (table S2). The difference between groups was -0.212 (95% CI,
19 -1.577 to 1.153). The change in the ALSFRS-R score from day 1 to week 24 of the double-blind
20 period was -5.36 (95% CI, -8.09 to -2.64) for the ropinirole group and -6.82 (95% CI, -10.54
21 to -3.10) for the placebo group (table S3). The between-group difference in the change in
22 ALSFRS-R scores was 1.46 points (95% CI, -3.15 to 6.07) over 24 weeks of treatment (figure
23 2A). In addition, participants in the ropinirole group had higher daily physical activity, as
24 measured by METs (figure 2B). The difference in METs per month between treatment groups at
25 week 24 was 317.5 (95% CI, 66.3 to 568.7) (table S3). There was a persistent increase in
26 between-group differences in the change in ALSFRS-R scores beyond 24 weeks. The change in
27 the ALSFRS-R score during the entire treatment period was -7.64 (95% CI, -10.66 to -4.63) for
28 the RR group and -17.51 (95% CI, -22.46 to -12.56) for the PR group (table S3). The treatment
29 difference in the change in ALSFRS-R scores was 9.86 points (95% CI, 4.07 to 15.66) over 48
30 weeks, indicating that RR reduced functional decline (figure 2A). The ALSFRS-R score for each

Morimoto and Takahashi et al, 2021

Manuscript Text

1 of the 12 items is also shown (figure S3). Furthermore, we applied a composite endpoint that
2 combined multiple clinically relevant functional components, expressed as the mean z-score. The
3 between-group differences in the mean z-score were 11.27 (95% CI, -5.85 to 28.39), 25.04 (95%
4 CI, 4.34 to 45.74), and 15.27 (95% CI, -11.92 to 42.47) at the end of 24, 39, and 50 weeks,
5 respectively (figure 2C). The results of individual components within the composite endpoint are
6 shown in Figures S4–S7 and Tables S4–S7.

7 **3.3.2 Survival outcomes**

8 To examine the relevance of the ALSFRS-R benefit to survival, we used the CAFS
9 measurement, which adjusts the ALSFRS-R score against mortality. The CAFS score favoured
10 ropinirole only in the open-label extension period (difference in median CAFS scores, 6.0; 95%
11 CI, -5 to 9) and the entire treatment period (difference in median CAFS scores, 9.0; 95% CI, 1 to
12 12) but not in the double-blind period (difference of median CAFS scores, 4.0; 95% CI, -6 to
13 10) (figure 3A). Related to respiratory outcome, 14.3% of participants in the placebo group
14 reached $\leq 50\%$ FVC in contrast to 0% in the ropinirole group in the double-blind period (95% CI,
15 -51.3 to 11.4), while 50% of participants in the PR group reached $\leq 50\%$ FVC beyond 40 weeks
16 in contrast to 0% in the RR group (RR group: 7.7%; PR group: 42.9%; difference, -35.2; 95%
17 CI, -67.9 to 2.1) (figure 3B). Notably, %FVC at baseline was not different between the RR and
18 RP groups (95% CI, -4.85 to 30.8).

19 We also investigated the time to death or certain disease progression events. There were 7 out of
20 7 (100%) events in the PR group and 7 out of 13 (54%) events in the RR group, suggesting a
21 twofold decrease in disease progression in the RR group (tables S9, S10A). The RR group had an
22 extended time to the first disease progression event (median event-free survival: 50.3 weeks vs.
23 22.4 weeks in the PR group) (log-rank test: 95% CI, 4.3 to 37.4; Cox regression model analysis:
24 hazard ratio = 0.25, 95% CI, 0.08 to 0.80) (figure 3C). We observed a higher proportion of
25 participants who progressed to grade 4 ALS severity or above in the placebo group at the end of
26 24 weeks (71% for placebo and 53% for ropinirole groups) and 48 weeks (100% for PR and 58%
27 for RR groups) (figure S8, table S9B). Moreover, we identified liquid biomarkers related to the
28 pathomechanism of ALS (figure S9A–C).

29

Morimoto and Takahashi et al, 2021

Manuscript Text

1 **4 DISCUSSION**

2 In our previous *in vitro* drug efficacy study using patient-derived iPSC-MNs⁵, the effect of
3 ropinirole on ALS was evident at 0.1, 1, and 10 $\mu\text{mol/L}$. The estimated ropinirole concentration
4 at 2 mg of Requip CR is approximately 5 nmol/L and that at 16 mg is approximately 50 nmol/L
5 in plasma and CSF.²¹ In other experiments, the efficacy of ropinirole was dose-dependent at
6 ropinirole concentrations of 1 nmol/L and 10 $\mu\text{mol/L}$ (figure S10), indicating that 2 mg of
7 Requip CR is effective. However, it is desirable to administer up to 16 mg, which is the
8 maximum approved dosage for use in PD in Japan.

9 Following the administration of 16 mg of ropinirole, the CSF concentration of ropinirole reached
10 approximately 18 nmol/L (table S1) and remained at a steady state. This observation is consistent
11 with the effective concentration of ropinirole in suppressing ALS-related damage in iPSC-
12 derived MNs, which ranged from 1 nmol/L or more based on the present (figure S10) and
13 previous results.⁵ Steady exposure to 18 nmol/L ropinirole was not associated with any serious
14 AEs that led to trial discontinuation. This trial demonstrated that fixed-dose ropinirole (16 mg)
15 had no specific safety concerns.

16 Overall, the incidence of AEs, most of which had been reported previously, were similar within
17 both groups (table 2A, B). Although gastrointestinal disorders had a high incidence at 76.9% in
18 the ropinirole group (14.3% in the placebo group), these symptoms were temporary mild nausea
19 and diarrhoea, and there were no participants in which the continuation of oral administration
20 was hindered (table 1). Therefore, ropinirole (2–16 mg) is tolerable for ALS patients.

21 Interestingly, the incidence of ropinirole-induced gastrointestinal disorders in PD patients and
22 healthy individuals in Japan is approximately 5–12% (pharmaceutical interview form for
23 Requip CR tablets, version 6) and 0% (table S10), respectively, which is different from the
24 results in ALS patients in this study. Therefore, gastrointestinal symptoms are not considered to
25 be a major adverse effect of ropinirole, and the reason why many gastrointestinal symptoms
26 appeared in ALS patients in this clinical trial is unknown. Regarding safety concerns,
27 gastrointestinal adverse effects for ALS patients might complicate care because ALS patients
28 have poor BMI, malnutrition, and cachexia; however, the ropinirole group did not differ
29 significantly from the placebo group in weight drop or in the ALSAQ-40 (eating and drinking)

Morimoto and Takahashi et al, 2021

Manuscript Text

1 score (figures S6 and S7). Thus, we thought that gastrointestinal symptoms did not significantly
2 affect safety or tolerability in this trial. Because the study was primarily designed to assess safety
3 and tolerability, we chose to present our clinical findings regarding the secondary outcomes as
4 reference for further study. Moreover, regarding the assurance of blinding, the ALSFRS-R score
5 includes both subjective and objective assessments. The investigators did indeed evaluate the
6 patients objectively, assessing at least half of the ALSFRS-R items (i.e., speech, handwriting,
7 cutting food and handling utensils, walking, climbing stairs and respiratory insufficiency). In our
8 posthoc analysis of the transition of each of the 12 items in the ALSFRS-R, no obvious
9 differences were noted between the results of subjective and objective assessment items (figure
10 S3). Therefore, blinding was not broken, and outcomes were not influenced throughout the study.
11 The blinding was kept throughout, and it was plausible that patients and investigators would not
12 know which group had active or placebo treatment; therefore, outcomes were not influenced
13 during the study.

14 The estimated effect size of ropinirole observed for a change in the ALSFRS-R score ranged
15 from 1.46 points to 9.86 points over 48 weeks, equivalent to a 21%–60% slower rate of
16 functional decline. Neurologists generally perceive a treatment difference of >20% as somewhat
17 clinically meaningful.²² Accordingly, the FDA and PMDA-approved ALS drug edaravone
18 reduced the rate of functional decline by 33% over 24 weeks.²³ Moreover, clinical evaluation
19 items such as the CAFS score, muscle strength, physical activity, pulmonary function, and
20 composite z-score might be useful as evaluation indexes for the efficacy of ropinirole. The CAFS
21 endpoint is advantageous because it evaluates functional and survival outcomes concomitantly
22 without relying on statistical assumptions. CAFS is well adjusted for missing values due to death
23 or drop-outs.¹³ However, CAFS measurements may be less relevant because there was only one
24 death in this study, indicating that mortality did not confound the survival analysis *per se*.

25 Ropinirole, a non-ergot dopamine agonist, was previously approved for the treatment of PD. The
26 full mechanism of action of ropinirole in ALS is not yet understood. Based on our previous
27 reports and according to its structural characteristics, its effects might be dopamine D2 receptor
28 (D2R)-dependent and D2R-independent.^{5, 21} With regard to the dopamine D2R-dependent anti-
29 ALS mechanism of ropinirole, we confirmed the protein expression of dopamine D2R on
30 anterior horn cells in a healthy human spinal cord and human iPSC-derived LMNs (figures S11
31 and S12), which is consistent with the transcriptome data.²¹ Furthermore, D2R couples with Gi

Morimoto and Takahashi et al, 2021

Manuscript Text

1 proteins to inhibit adenyryl cyclase, resulting in decreased intracellular cAMP levels. As a result,
2 neuronal hyperexcitability, which is thought to be the cause of MN toxicity, can be inhibited.^{24,25}
3 Recently, it was shown that D2R agonists other than ropinirole, such as bromocriptine and
4 sumanirole, suppressed the hyperexcitability of human iPSC-derived MNs *in vitro*.²⁴ This
5 suppression of neuronal hyperexcitation might protect ALS MNs, which is relevant to the action
6 of riluzole. Furthermore, previous reports indicated that autophagy may be activated by
7 dopamine D2R and D3R agonists via a Beclin-1-dependent pathway.^{26, 27} Thus, ropinirole-
8 induced dopamine D2R activation might induce autophagy, supporting the degradation and
9 disassembly of abnormal RNA-protein complexes in the MNs of patients with ALS.

10

11 With regard to dopamine D2R-independent mechanisms, it is notable that ropinirole is a
12 lipophilic cation that readily localizes to the mitochondrial inner membrane due to its tertiary
13 amine moiety and possesses antioxidant properties related to its oxindole structure.²¹ Consistent
14 with this, urine 8-hydroxy-2'-deoxyguanosine, a surrogate marker of oxidative stress, was not
15 increased in the ropinirole group throughout the entire study period (figure S9A). These findings
16 suggest that ropinirole may scavenge mitochondrial reactive oxygen species and protect cells
17 against mitochondrial damage in ALS. In addition, ropinirole suppressed increases in ALS
18 pathomechanism-related markers, such as serum ferritin^{28, 29} and high-sensitivity C-reactive
19 protein,³⁰ throughout the entire study period (figure S9A). Interestingly, bromocriptine mesylate,
20 an ergot alkaloid and agonist of the same dopamine receptor, namely, D2R, is expected to have
21 an effect on dopamine D2R-independent and neuronal apoptosis inhibitory protein (NAIP), an
22 oxidative stress-induced cell death suppressor -mediated anti-ALS mechanism.^{6,31} Collectively,
23 the precise mechanism of action of ropinirole in ALS warrants further investigation.

24

25 Interpretations of efficacy analyses in this feasibility study were limited by the small sample size
26 of 20 participants. This was further compounded by the unexpectedly higher rate of
27 discontinuation in this study than the historical rate in clinical trials of ALS (~20%)³²; 46.2%
28 (6/13) of the participants in the ropinirole group and 85.7% (6/7) in the placebo group
29 discontinued the trial (table S11), and the ratio of patients in the ropinirole versus placebo group
30 changed, particularly in the open-label extension period.

Morimoto and Takahashi et al, 2021

Manuscript Text

1 These discontinuation rates, particularly during the open-label extension phase, were attributable,
2 at least in part, to the COVID-19 outbreak, which accounted for 23% and 29% of the participants
3 in the ropinirole and placebo groups, respectively. Therefore, it may have had some undesirable
4 influence on the objective interpretation of the results. The number of participants in the placebo
5 group who discontinued the trial due to a worsening condition (47%) was higher than that in the
6 ropinirole group (23%). We did not apply any imputation to the missing data but used the
7 MMRM to infer missing data. In a recent randomized and controlled trial of rasagiline for ALS,
8 60% of the placebo group withdrew from the trial. As a result, the investigators increased the
9 power of the study by utilizing placebo (n=8) and historical placebo controls (n=177).³³ In the
10 future, the addition or adoption of historical placebo controls may be a plausible approach to
11 enrich the placebo cohort, particularly for trials with an extended period.

12
13 In this trial, the placebo group had more bulbar onset, more female patients and a lower BMI at
14 baseline, which could be the relevant prognostic factors for ALS.³⁴⁻³⁶ These are major
15 weaknesses of this trial. In addition, there are some points to be discussed for further study. It is
16 important to note that the slope for the ALSFRS-R decline (-3.4 points) was consistent between
17 the ropinirole and placebo groups during the 12-week run-in period. Additionally, the onset of
18 disease is self-reported and can be influenced by the sensitivity and character of an individual
19 patient; therefore, it is difficult to confirm the accuracy of the period of disease duration. We
20 considered the latest disease progression rate to be more important and emphasized this
21 progression rate with the ALSFRS-R during the 12-week pre-observation period. These
22 observations ruled out potential baseline imbalances related to differences in disease duration.
23 Moreover, previous observational studies showed that the relationship between bulbar onset and
24 survival prognosis were controversial after adjustments for the other clinical features of ALS.³⁴⁻
25 ³⁷ In practice, both the bulbar-onset group and the nonbulbar-onset group showed almost
26 identical transitions in ALSFRS-R scores. In addition, both the ropinirole and placebo groups
27 were divided into the bulbar-onset group and the nonbulbar-onset group (figure S13). When we
28 compared the bulbar-onset and the nonbulbar-onset groups, no significant difference was
29 observed at any time point. Therefore, in this clinical trial, the transition in the ALSFRS-R was
30 not affected by the higher percentage of bulbar-onset patients in the placebo group.

31

Morimoto and Takahashi et al, 2021

Manuscript Text

1 Although we observed clinically meaningful differences between the treatment groups for
2 functional and survival outcomes, these differences were primarily observed in the open-label
3 phase. During the double-blind phase, we observed statistically significant treatment differences
4 only for physical activity. Indeed, the rate of decline in the ALSFRS-R score in the placebo
5 group was not improved even during the open-label extension period when the active drug was
6 started. Interestingly, a similar phenomenon was observed in another trial.³⁸ Although the
7 underlying mechanism of this observation remains unclear, we postulate that taking ropinirole
8 earlier and for longer is necessary to demonstrate its efficacy in participants with ALS.
9 Furthermore, the patient population was skewed towards early-stage ALS (the total ALSFRS-R
10 score at baseline was 39.5 ± 3.0); thus, we also have no conclusive empirical data to demonstrate
11 whether ropinirole was effective in patients with advanced ALS. Taken together, the
12 uncontrolled data with a limited sample size reported in this feasibility study should be
13 interpreted with caution and must be further validated with, ideally, advanced trials and trial
14 designs. Therefore, the efficacy of ropinirole in ALS deserves further investigation in larger,
15 multinational, randomized controlled trials.³⁹

16

17 Although this trial is a randomized feasibility trial, the results of this trial encourage further study
18 using ropinirole in ALS worldwide. To the best of our knowledge, the ROPALS trial is the
19 representative touchstone of iPSC-based drug repurposing-enabled trials to define the feasibility
20 of iPSC models in predicting clinical outcomes and replacing failure-prone preclinical transgenic
21 mouse models of ALS.

Morimoto and Takahashi et al, 2021

Manuscript Text

1 5 REFERENCES

- 2 1. Brown RH, Al-Chalabi A. Amyotrophic Lateral Sclerosis. *N Engl J Med* 2017;377:162–72.
- 3 2. Jaiswal MK. Riluzole and edaravone: A tale of two amyotrophic lateral sclerosis drugs.
- 4 *Med Res Rev* 2019;39:733–48.
- 5 3. Dowden H, Munro J. Trends in clinical success rates and therapeutic focus. *Nat Rev Drug*
- 6 *Discov* 2019;18:495–6.
- 7 4. Pasteuning-Vuhman S, de Jongh R, Timmers A, Pasterkamp RJ. Towards Advanced iPSC-
- 8 based Drug Development for Neurodegenerative Disease. *Trends in Molecular Medicine*
- 9 *2021;27:263–79.*
- 10 5. Fujimori K, Ishikawa M, Otomo A, et al. Modeling sporadic ALS in iPSC-derived motor
- 11 neurons identifies a potential therapeutic agent. *Nat Med* 2018;24:1579–89.
- 12 6. Tanaka K, Kanno T, Yanagisawa Y, et al. Bromocriptine methylate suppresses glial
- 13 inflammation and moderates disease progression in a mouse model of amyotrophic lateral
- 14 sclerosis. *Exp Neurol* 2011;232:41–52.
- 15 7. Pattee GL, Post GR, Gerber RE, et al. Reduction of oxidative stress in amyotrophic lateral
- 16 sclerosis following pramipexole treatment. *Amyotroph Lateral Scler Other Motor Neuron*
- 17 *Disord* 2003;4:90–5.
- 18 8. Nagata E, Ogino M, Iwamoto K, et al. Bromocriptine Mesylate Attenuates Amyotrophic
- 19 Lateral Sclerosis: A Phase 2a, Randomized, Double-Blind, Placebo-Controlled Research in
- 20 Japanese Patients. *PLoS One* 2016;11:e0149509.
- 21 9. Wang H, Larriviere KS, Keller KE, et al. R+ pramipexole as a mitochondrially focused
- 22 neuroprotectant: initial early phase studies in ALS. *Amyotroph Lateral Scler* 2008;9:50-8.
- 23 10. Cudkovicz M, Bozik ME, Ingersoll EW, et al. The effects of dextramipexole (KNS-
- 24 760704) in individuals with amyotrophic lateral sclerosis. *Nat Med* 2011;17:1652-6.
- 25 11. Cudkovicz ME, van den Berg LH, Shefner JM, et al. Dextramipexole versus placebo for
- 26 patients with amyotrophic lateral sclerosis (EMPOWER): a randomised, double-blind,
- 27 phase 3 trial. *Lancet Neurol* 2013;12:1059–67.
- 28 12. Cedarbaum JM, Stambler N, Malta E, et al. The ALSFRS-R: a revised ALS functional
- 29 rating scale that incorporates assessments of respiratory function. *Journal of the*
- 30 *Neurological Sciences* 1999;169:13–21.
- 31 13. Berry JD, Miller R, Moore DH, et al. The Combined Assessment of Function and Survival
- 32 (CAFS): A new endpoint for ALS clinical trials. *Amyotrophic Lateral Sclerosis and*
- 33 *Frontotemporal Degeneration* 2013;14:162–8.
- 34 14. Ohkawara K, Oshima Y, Hikiyama Y, Ishikawa-Takata K, Tabata I, Tanaka S. Real-time
- 35 estimation of daily physical activity intensity by a triaxial accelerometer and a gravity-
- 36 removal classification algorithm. *Br J Nutr* 2011;105:1681–91.
- 37 15. Morimoto S, Takahashi S, Fukushima K, et al. Ropinirole hydrochloride remedy for
- 38 amyotrophic lateral sclerosis - Protocol for a randomized, double-blind, placebo-controlled,
- 39 single-center, and open-label continuation phase I/IIa clinical trial (ROPALS trial). *Regen*
- 40 *Ther* 2019;11:143–66.
- 41 16. The prescribing information for RADICUT Injection 30mg, Revised: June 2015 (18th
- 42 version) D15a. Mitsubishi Tanabe Pharma Corporation: The second confirmatory study
- 43 (internal report)
- 44 17. Abe K, Itoyama Y, Sobue G, et al. Confirmatory double-blind, parallel-group, placebo-
- 45 controlled study of efficacy and safety of edaravone (MCI-186) in amyotrophic lateral
- 46 sclerosis patients. *Amyotroph Lateral Scler aller Frontotemporal Degene.* 2014;15:610–7.

Morimoto and Takahashi et al, 2021

Manuscript Text

- 1 18. van Eijk RPA, Bakers JNE, Bunte TM, et al. Accelerometry for remote monitoring of
2 physical activity in amyotrophic lateral sclerosis: a longitudinal cohort study. *J Neuro*
3 2019;266:2387–2395.
- 4 19. The ALS Stratification Consortium, Kueffner R, Zach N, et al. Stratification of amyotrophic
5 lateral sclerosis patients: a crowdsourcing approach. *Sci Rep* 2019;9:690.
- 6 20. Kang M, Ragan BG, Park JH. Issues in outcomes research: an overview of randomization
7 techniques for clinical trials. *J Athl Train* 2008;43:215–21.
- 8 21. Okano H, Yasuda D, Fujimori K, Morimoto S, Takahashi S. Ropinirole, a New ALS Drug
9 Candidate Developed Using iPSCs. *Trends in Pharmacological Sciences* 2020;41:99–109.
- 10 22. Castrillo-Viguera C, Grasso DL, Simpson E, Shefner J, Cudkowicz ME. Clinical
11 significance in the change of decline in ALSFRS-R. *Amyotrophic Lateral Sclerosis*
12 2010;11:178–80.
- 13 23. Abe K, Aoki M, Tsuji S, et al. Safety and efficacy of edaravone in well-defined patients
14 with amyotrophic lateral sclerosis: a randomised, double-blind, placebo-controlled trial. *The*
15 *Lancet Neurology* 2017;16:505–12.
- 16 24. Huang X, Roet KCD, Zhang L. et al. Human amyotrophic lateral sclerosis excitability
17 phenotype screen: Target discovery and validation. *Cell Reports* 2021; 35: 109224.
- 18 25. de Castro Abrantes H, Briquet M, Schmuziger C, et al. The Lactate Receptor HCAR1
19 Modulates Neuronal Network Activity through the Activation of $G\alpha$ and $G\beta\gamma$ Subunits. *J*
20 *Neurosci* 2019;39:4422–33.
- 21 26. Wang JD, Cao YL, Li Q, et al. A pivotal role of FOS-mediated BECN1/Beclin 1
22 upregulation in dopamine D2 and D3 receptor agonist-induced autophagy activation.
23 *Autophagy* 2015;11:2057–73.
- 24 27. Luis-Ravelo D, Estévez-Silva H, Barroso-Chinea P, et al. Pramipexole reduces soluble
25 mutant huntingtin and protects striatal neurons through dopamine D3 receptors in a genetic
26 model of Huntington's disease. *Exp Neurol* 2018;299:137–47.
- 27 28. Nadjar Y, Gordon P, Corcia P, et al. Elevated serum ferritin is associated with reduced
28 survival in amyotrophic lateral sclerosis. *PLoS One* 2012;7:e45034.
- 29 29. Yu J, Wang N, Qi F, et al. Serum ferritin is a candidate biomarker of disease aggravation in
30 amyotrophic lateral sclerosis. *Biomed Rep* 2018;9:333–8.
- 31 30. Lunetta C, Lizio A, Maestri E, et al. Serum C-Reactive Protein as a Prognostic Biomarker
32 in Amyotrophic Lateral Sclerosis. *JAMA Neurol* 2017;74:660–7.
- 33 31. Kano O, Tanaka K, Kanno T, et al. Neuronal apoptosis inhibitory protein is implicated in
34 amyotrophic lateral sclerosis symptoms. *Sci Rep* 2018;8:6
- 35 32. Atassi N, Yerramilli-Rao P, Szymonifka J, et al. Analysis of start-up, retention, and
36 adherence in ALS clinical trials. *Neurology* 2013;81:1350–5.
- 37 33. Statland JM, Moore D, Wang Y, et al. Rasagiline for amyotrophic lateral sclerosis: A
38 randomized, controlled trial: RCT of Rasagiline in ALS. *Muscle Nerve* 2019;59:201–7.
- 39 34. Chiò A, Logroscino G, Hardiman O, et al. Prognostic factors in ALS: A critical review.
40 *Amyotroph Lateral Scler* 2009;10:310-23.
- 41 35. del Aguila MA, Longstreth WT Jr, McGuire V, et al. Prognosis in amyotrophic lateral
42 sclerosis: a population-based study. *Neurology* 2003;60:813–9.
- 43 36. Requardt MV, Görlich D, Grehl T, et al. Clinical Determinants of Disease Progression in
44 Amyotrophic Lateral Sclerosis-A Retrospective Cohort Study. *J Clin Med* 2021;10:1623.

Morimoto and Takahashi et al, 2021

Manuscript Text

- 1 37. Traxinger K, Kelly C, Johnson BA, et al. Prognosis and epidemiology of amyotrophic
2 lateral sclerosis: Analysis of a clinic population, 1997-2011. *Neurol Clin Pract* 2013;3:313–
3 20.
- 4 38. Paganoni S, Hendrix S, Dickson SP, et al. Long-term survival of participants in the
5 CENTAUR trial of sodium phenylbutyrate-taurursodiol in amyotrophic lateral sclerosis.
6 *Muscle Nerve* 2021;63:31–9.
- 7 39. Kiernan MC, Vucic S, Talbot K, et al. Improving clinical trial outcomes in amyotrophic
8 lateral sclerosis. *Nat Rev Neurol* 2021;17:104–18.
9

Morimoto and Takahashi et al, 2021

Manuscript Text

1 **6 APPENDIX**

2 **Funding**

3 This clinical trial was sponsored by K Pharma, Inc. The study drug, active drugs, and placebo
4 were supplied free-of-charge by GlaxoSmithKline K.K.

6 **Declaration of interests**

7 Dr. Morimoto reports grants from Keio University School of Medicine, during the conduct of the
8 study. Dr. Takahashi reports grants from Keio University School of Medicine, during the
9 conduct of the study. Dr. Ito has nothing to disclose. Dr. Daté has nothing to disclose. Dr. Okada
10 has nothing to disclose. Dr. Chai has nothing to disclose. Dr. Nishiyama has nothing to disclose.
11 Dr. Naoki Suzuki has nothing to disclose. Dr. Fujimori reports personal fees from Sumitomo
12 Dainippon Pharma Co., Ltd., outside the submitted work. Dr. Takao has nothing to disclose. Ms.
13 Hirai has nothing to disclose. Dr. Kabe has nothing to disclose. Dr. Suematsu has nothing to
14 disclose. Dr. Jinzaki has nothing to disclose. Dr. Aoki reports grants from Research on Nervous
15 and Mental disorders, Research on rare and intractable diseases, Research on Psychiatric and
16 Neurological Diseases and Mental Health from the Japanese Ministry of Health Labour and
17 Welfare, Grants-in-Aids for Scientific Research, an Intramural Research Grant for Neurological
18 Psychiatric Disorders from NCNP, Grants-in-Aids for Scientific Research from the Japanese
19 Ministry of Education, Culture, Sports, Science and Technology (MEXT), and Practical
20 Research Project for Rare / Intractable Diseases from Japan Agency for Medical Research and
21 Development (AMED), during the conduct of the study. Mr. Fujiki has nothing to disclose. Dr.
22 Sato has nothing to disclose. Dr. Suzuki has nothing to disclose. Dr. Nakahara reports grants
23 from Japan Agency for Medical Research and Development (AMED), grants from K Pharma,
24 Inc, non-financial support from GSK, during the conduct of the study. Dr. Okano reports grants
25 from Japan Agency for Medical Research and Development, grants and personal fees from K
26 Pharma Inc., during the conduct of the study; personal fees from SanBio Co.Ltd., personal fees
27 from Regenerative Medicine iPS Gateway Centre Co.,Ltd., outside the submitted work; In
28 addition, Dr. Okano has a patent THERAPEUTIC AGENT FOR AMYOTROPHIC LATERAL
29 SCLEROSIS AND COMPOSITION FOR TREATMENT licensed to K Pharma Inc. and grant
30 support from AMED (The Acceleration Program for Intractable Disease Research Utilizing
31 Disease-specific iPS Cells (Grant No. JP 19bm0804003, JP 20bm0804003, JP 21bm0804003)

Morimoto and Takahashi et al, 2021

Manuscript Text

1 and Research on Practical Application of Innovative Pharmaceutical and Medical Devices for
2 Rare and Intractable Diseases (Grant No. JP 18ek0109395, JP 19ek0109395, JP 20ek0109395,
3 JP 18ek0109329, JP 19ek0109329, JP 20ek0109329). The human spinal cord samples were
4 provided by Platform of Supporting Cohort Study and Biospecimen Analysis, Grant-in-Aid for
5 Scientific Research on Innovative Areas—Platforms for Advanced Technologies and Research
6 Resources, Ministry of Education, Culture, Sports, Science and Technology, Japan (Grant No.
7 16H06277) and Intramural Research Grant for Neurological Psychiatric Disorders from National
8 Centre of Neurology and Psychiatry (NCNP). The funding sources had no role in the analysis.

9

10 **Acknowledgments**

11 We thank the trial coordinators, staff, and participants for their contributions, Komei Fukushima
12 of K Pharma Inc, for contributing to the development of an earlier version of the research plan,
13 Asuka Ogasawara, for coordinating this trial as one of the clinical research coordinators, Kazuo
14 Watanabe of CTD Inc., a contract research organization, for managing this trial, Kentaro Higashi
15 and Takashi Kasama of Keio University Hospital Clinical And Translational Research Center,
16 for managing this trial as project managers, Takayuki Abe of Keio University Hospital Clinical
17 And Translational Research Center, for contributing to the development of an earlier version of
18 the statistical plan, Akihisa Yamazaki in the Department of Radiology, Keio University Hospital,
19 for contributing to determining the muscle CT imaging conditions, Yoshitaka Yamada of the
20 Department of Radiology, Keio University Hospital, for supporting the analysis of muscle CT
21 images, Hiroyoshi Shiina in the Department of Pharmacy, Keio University Hospital, for
22 contributing to managing the investigational drugs, Shun Kawada in the Office of Research
23 Development and Sponsored Projects, Keio University School of Medicine for managing this
24 trial as a contractor, Takanori Yokota of the Department of Neurology, Tokyo Medical and
25 Dental University, Kazutomi Kanemaru, the Department of Neurology, Tokyo Metropolitan
26 Geriatric Hospital, Masaki Takao, the Department of Clinical Laboratory, National Center of
27 Neurology and Psychiatry (NCNP) for Independent Data Monitoring Committee, Fumiko Ozawa
28 and Shiho Nakamura, for contributing to the *in vitro* analysis, and Mitsutoshi Tano at the Mihara
29 Memorial Hospital, Isesaki, Japan for preparing and immunostaining the human spinal cord
30 samples. We are grateful to Hitoshi Warita, Naoko Shimakura, Shion Osana, Ryo Funayama,
31 Keiko Nakayama, Tetsuya Niihori, and Yoko Aoki, the Department of Neurology, Tohoku

Morimoto and Takahashi et al, 2021

Manuscript Text

1 University Graduate School of Medicine, for their technical assistance on gene analysis, and BT
2 Slingsby, Catalys Pacific, LLC for critical reading. We thank J. Ludovic Croxford, PhD, and
3 Melissa Crawford, PhD, from Edanz (<https://jp.edanz.com/ac>), and Springer Nature for editing a
4 draft of this manuscript.

5

6 **Data Sharing**

7 The authors confirm that the data supporting the findings of this study are available within the
8 article and its supplementary materials.

9

Morimoto and Takahashi et al, 2021
Manuscript Text

1 **7 TABLES**

	Ropinirole hydrochloride	Placebo	Overall
	(N=13)	(N=7)	(N=20)
Female sex — no. (%)	3 (23·1)	4 (57·1)	7 (35·0)
Age — yr	65·2±12·6	66·3±7·5	65·6±10·9
Familial history — no. (%)	0 (0)	0 (0)	0 (0)
Revised El Escorial Diagnostic criteria — no. (%)			
Clinically Definite ALS	1 (7·7)	1 (14·3)	2 (10·0)
Clinically Probable ALS	10 (76·9)	6 (85·7)	16 (80·0)
Clinically Probable ALS Laboratory Supported	2 (15·4)	0 (0)	2 (10·0)
ALS severity scale§ — no. (%)			
Grade 1	4 (30·8)	3 (42·9)	7 (35·0)
Grade 2	8 (61·5)	3 (42·9)	11 (55·0)
Grade 4	1 (7·7)	1 (14·3)	2 (10·0)
Onset lesion — no. (%)			
Bulbar	4 (30·8)	4 (57·1)	8 (40·0)
Upper limb	8 (61·5)	1 (14·3)	9 (45·0)
Lower limb	1 (7·7)	2 (28·6)	3 (15·0)
Riluzole or edaravone use — no. (%)			
Riluzole	10 (76·9)	5 (71·4)	15 (75·0)
Edaravone	6 (46·2)	2 (28·6)	8 (40·0)
Median months since ALS symptom onset† (Interquartile range)	24·0 (18-27)	17·0 (6-18)	18·0 (16-26)
Body-mass index□	22·91±3·82	19·69±2·63	21·78±3·72
ALSFRS Total Score: Before observation¶	43·4±2·8	42·0±2·9	42·9±2·9
ALSFRS Total Score: At baseline¶	40·0±2·9	38·6±3·1	39·5±3·0
%FVC: At baseline — %	94·4±14·9	81·4±23·2	89·9±18·7

2

3 **Table 1. Demographic and Clinical Characteristics of the 20 Participants at Baseline.***

4 *Plus-minus values are the means ± SD. All participants were Japanese.

5 §According to the Japan ALS severity classification (grades 1–5, grade 5 is most severe).

6 ¶ALSFRS-R consists of four subdomains and 12 components, where each component is scored on a scale from 0 to
7 4. Higher scores indicate better function.

8 □The body-mass index is the weight in kilograms divided by the square of the height in meters.

9 †The difference in disease duration resulted from the dynamic allocation of trial participants using “≥30 months or
10 <30 months after onset” as an adjustment factor because we initially did not expect a statistically significant

Morimoto and Takahashi et al, 2021

Manuscript Text

- 1 variation within the group of participants. However, the group of participants in the <30 months after onset group
- 2 was diverse.
- 3 Abbreviations: ALS = Amyotrophic Lateral Sclerosis, ALSFRS-R = Revised ALS Functional Rating Scale, SD =
- 4 Standard Deviation.

Morimoto and Takahashi et al, 2021
Manuscript Text

Variable	Double-blind period		Open-label extension period	
	Ropinirole hydrochloride (N=13)	Placebo (N=7)	Ropinirole hydrochloride (N=12)	Placebo (Ropinirole hydrochloride) (N=5)
Adverse event				
≥1 Adverse event — no. (% , 95%CI)	12 (92.3, 64.0-99.8)	6 (85.7, 42.0-99.6)	11 (91.7, 61.5-99.8)	4 (80.0, 28.4-99.5)
No. of distinct events	50	14	34	32
Trial regimen interrupted owing to adverse event — no. (%)	0	0	0	0
Dose reduced owing to adverse event — no. (%)	0	0	0	0
Trial regimen discontinued owing to adverse event — no. (%)	0	0	0	0
Serious adverse events				
≥1 Adverse event — no. (%)	0	1 (14.3)	0	1 (20.0)
No. of distinct events	0	1	0	1
Death — no. (%)	0	1 (14.3)	0	0
≥1 Serious adverse event considered to be related to intervention — no. (%)	0	0	0	1 (20.0)
Trial regimen discontinued owing to serious adverse event — no. (%)	0	0	0	0
Adverse events with ≥5% incidence in either group† — no. (% , 95%CI)				
Gastrointestinal disorders	10 (76.9, 46.2-95.0)	1 (14.3, 0.4-57.9)	1 (8.3, 0.2-38.5)	3 (60.0, 14.7-94.7)
Musculoskeletal and connective-tissue disorders	1 (7.7, 0.2-36.0)	1 (14.3, 0.4-57.9)	0 (0.0 - 26.5)	0 (0.0-52.2)
Injury, poisoning, and procedural complications	1 (7.7, 0.2-36.0)	2 (28.6, 3.7-71.0)	3 (25.0, 5.5-57.2)	0 (0.0-52.2)
Nervous-system disorders	7 (53.8, 25.1-80.8)	0 (0.0-41.0)	7 (58.3, 27.7-84.8)	2 (40.0, 5.3-85.3)
Infections and infestations	3 (23.1, 5.0-53.8)	2 (28.6, 3.7-71.0)	5 (41.7, 15.2-72.3)	3 (60.0, 14.7-94.7)
Respiratory, thoracic, and mediastinal disorders	1 (7.7, 0.2-36.0)	1 (14.3, 0.4-57.9)	0 (0.0 - 26.5)	0 (0.0-52.2)
General disorders and administration-site conditions	4 (30.8, 9.1-61.4)	0 (0.0-41.0)	4 (33.3, 9.9-65.1)	3 (60.0, 14.7-94.7)
Skin and subcutaneous-tissue disorders	4 (30.8, 9.1-61.4)	0 (0.0-41.0)	2 (16.7, 2.1-48.4)	3 (60.0, 14.7-94.7)
Psychiatric disorders	1 (7.7, 0.2-36.0)	0 (0.0-41.0)	0 (0.0 - 26.5)	1 (20.0, 0.5-71.6)
Hepatobiliary disorders	0 (0.0-24.7)	0 (0.0-41.0)	0 (0.0 - 26.5)	1 (20.0, 0.5-71.6)
Renal and urinary disorders	0 (0.0-24.7)	0 (0.0-41.0)	0 (0.0 - 26.5)	1 (20.0, 0.5-71.6)
Metabolism and nutrition disorders	0 (0.0-24.7)	1 (14.3, 0.4-57.9)	1 (8.3, 0.2-38.5)	1 (20.0, 0.5-71.6)
Cardiac disorders	0 (0.0-24.7)	1 (14.3, 0.4-57.9)	0 (0.0 - 26.5)	0 (0.0-52.2)
Vascular disorders	1 (7.7, 0.2-36.0)	1 (14.3, 0.4-57.9)	1 (8.3, 0.2-38.5)	1 (20.0, 0.5-71.6)
Blood and lymphatic system disorders	0 (0.0-24.7)	0 (0.0-41.0)	0 (0.0 - 26.5)	1 (20.0, 0.5-71.6)
Eye disorders	1 (7.7, 0.2-36.0)	0 (0.0-41.0)	1 (8.3, 0.2-38.5)	0 (0.0-52.2)
Reproductive system and breast disorders	0 (0.0-24.7)	0 (0.0-41.0)	1 (8.3, 0.2-38.5)	0 (0.0-52.2)
Investigations	0 (0.0-24.7)	1 (14.3, 0.4-57.9)	3 (25.0, 5.5-57.2)	1 (20.0, 0.5-71.6)

1

2 **Table 2A. Summary of Adverse Events* for 20 Participants.**

Morimoto and Takahashi et al, 2021

Manuscript Text

- 1 *The safety population included all participants who received at least one dose of ropinirole or placebo. The
- 2 relevance of adverse events or serious adverse events to the intervention was determined by the site investigator.
- 3 †Adverse events and serious adverse events were classified according to system organ class and preferred terms in
- 4 the *Medical Dictionary for Regulatory Activities*, version 23.1.

Morimoto and Takahashi et al, 2021
Manuscript Text

Variable	Double-blind period		Open-label extension period	
	Ropinirole hydrochloride (N=13)	Placebo (N=7)	Ropinirole hydrochloride (N=12)	Placebo (Ropinirole hydrochloride) (N=5)
Anticipated adverse event				
≥1 Adverse event — no. (% , 95%CI)	9 (69.2, 38.6-90.9)	1 (14.3, 0.4-57.9)	8 (66.7, 34.9-90.1)	2 (40.0, 5.3-85.3)
No. of distinct events	18	1	11	9
Trial regimen interrupted owing to adverse event — no. (%)	0	0	0	0
Dose reduced owing to adverse event — no. (%)	0	0	0	0
Trial regimen discontinued owing to adverse event — no. (%)	0	0	0	0
Anticipated serious adverse events				
≥1 Adverse event — no. (%)	0	0	0	1 (20.0)
No. of distinct events	0	0	0	1
Death — no. (%)	0	0	0	0
≥1 Serious adverse event considered to be related to intervention — no. (%)	0	0	0	1 (20.0)
Trial regimen discontinued owing to serious adverse event — no. (%)	0	0	0	0
Anticipated adverse events with ≥5% incidence in either group† — no. (% , 95%CI)				
Gastrointestinal disorders	6 (46.2, 19.2-74.9)	0 (0.0-41.0)	1 (8.3, 0.2-38.5)	1 (20.0, 0.5-71.6)
Musculoskeletal and connective-tissue disorders	0 (0.0-24.7)	0 (0.0-41.0)	0 (0.0-26.5)	0 (0.0-52.2)
Injury, poisoning, and procedural complications	0 (0.0-24.7)	0 (0.0-41.0)	0 (0.0-26.5)	0 (0.0-52.2)
Nervous-system disorders	3 (23.1, 5.0-53.8)	0 (0.0-41.0)	3 (25.0, 5.5-57.2)	2 (40.0, 5.3-85.3)
Infections and infestations	0 (0.0-24.7)	0 (0.0-41.0)	0 (0.0-26.5)	0 (0.0-52.2)
Respiratory, thoracic, and mediastinal disorders	1 (7.7, 0.2-36.0)	0 (0.0-41.0)	0 (0.0-26.5)	0 (0.0-52.2)
General disorders and administration-site conditions	3 (23.1, 5.0-53.8)	0 (0.0-41.0)	3 (25.0, 5.5-57.2)	2 (40.0, 5.3-85.3)
Skin and subcutaneous-tissue disorders	0 (0.0-24.7)	0 (0.0-41.0)	1 (8.3, 0.2-38.5)	0 (0.0-52.2)
Psychiatric disorders	0 (0.0-24.7)	0 (0.0-41.0)	0 (0.0-26.5)	0 (0.0-52.2)
Hepatobiliary disorders	0 (0.0-24.7)	0 (0.0-41.0)	0 (0.0-26.5)	0 (0.0-52.2)
Renal and urinary disorders	0 (0.0-24.7)	0 (0.0-41.0)	0 (0.0-26.5)	0 (0.0-52.2)
Metabolism and nutrition disorders	0 (0.0-24.7)	0 (0.0-41.0)	0 (0.0-26.5)	0 (0.0-52.2)
Cardiac disorders	0 (0.0-24.7)	0 (0.0-41.0)	0 (0.0-26.5)	0 (0.0-52.2)
Vascular disorders	0 (0.0-24.7)	0 (0.0-41.0)	0 (0.0-26.5)	0 (0.0-52.2)
Blood and lymphatic system disorders	0 (0.0-24.7)	0 (0.0-41.0)	0 (0.0-26.5)	1 (20.0, 0.5-71.6)
Eye disorders	0 (0.0-24.7)	0 (0.0-41.0)	0 (0.0-26.5)	0 (0.0-52.2)
Reproductive system and breast disorders	0 (0.0-24.7)	0 (0.0-41.0)	1 (8.3, 0.2-38.5)	0 (0.0-52.2)
Investigations	0 (0.0-24.7)	1 (14.3, 0.4-57.9)	1 (8.3, 0.2-38.5)	0 (0.0-52.2)

1

2 **Table 2B. Summary of Anticipated Adverse Events* for 20 Participants.**

3 *The safety population included all participants who received at least one dose of ropinirole or placebo. The
4 relevance of adverse events or serious adverse events to the intervention was determined by the site investigator.

5 †Adverse events and serious adverse events were classified according to system organ class and preferred terms in
6 the *Medical Dictionary for Regulatory Activities*, version 23.1.

Morimoto and Takahashi et al, 2021
Manuscript Text

1 **8 FIGURE LEGENDS**

2 **Figure 1. CONSORT Flow Diagram.**

3 The diagram illustrates the screening, randomization, and follow-up processes in the ROPALS
4 trial. Trial participants who completed the run-in period were randomized to receive either
5 ropinirole or placebo at a 3:1 ratio. Due to dynamic allocation and allocation adjustment factors,
6 13 participants were assigned to receive ropinirole and 7 participants were assigned to receive
7 placebo (approximately a 2:1 ratio). The *in vitro* evaluations of drug effects and exploration of
8 new biomarkers using patient iPSC-derived motor neurons are ongoing.

10 **Figure 2. Effect of Ropinirole Treatment on ALSFRS-R score, Physical Activity and Z-** 11 **score.**

12 (A) Estimated change from baseline in ALSFRS-R total score every four weeks (FAS, entire
13 period).

14 (B) Level of physical activity every four weeks (FAS, double-blind period).

15 (C) The composite z-score functional outcome based on a battery of functional and QoL
16 endpoints (FAS, entire trial period; post hoc).

17 → Z: The amount of change at each measurement time (weeks 13, 24, 39, 50) from the values at
18 12 weeks after interim registration in each item was calculated, and then converted to a z-score.
19 Next, a comparison between groups was performed.

20 ‡Differences >0 indicate a positive treatment effect of ropinirole.

21 I bars represent the 95%CI.

22 Abbreviations: ALSFRS-R = Revised ALS Functional Rating Scale, FAS = Full Analysis Set,

23

24 **Figure 3. Effect of Ropinirole Treatment on Survival.**

25 (A) Median CAFS scores[¶] of participants in the double-blind period (n=20), open-label period
26 (n=16), and entire trial period (n=20). Scores range from (1) (worst) to (20) (best).

27 (B) The proportion of participants whose %FVC was reduced to 50% over 48 weeks.

28 (C) The proportion of participants with an occurrence of disease progression events, including
29 death, over 48 weeks.

30 ¶CAFS ranks patient clinical outcomes based on survival time and change in the ALSFRS-R
31 score. Each patient's outcome is compared with every other patient's outcome, assigned a score,

Morimoto and Takahashi et al, 2021

Manuscript Text

- 1 and the summed scores are ranked. The mean rank score for each treatment group is then
- 2 calculated. A higher mean CAFS score indicates a better group outcome.
- 3 Abbreviations: CAFS = Combined Assessment of Function and Survival, %FVC = percent
- 4 predicted Forced Vital Capacity, ALSFRS-R = Revised ALS Functional Rating Scale.

Figure 1

CONSORT Diagram: Trial profile

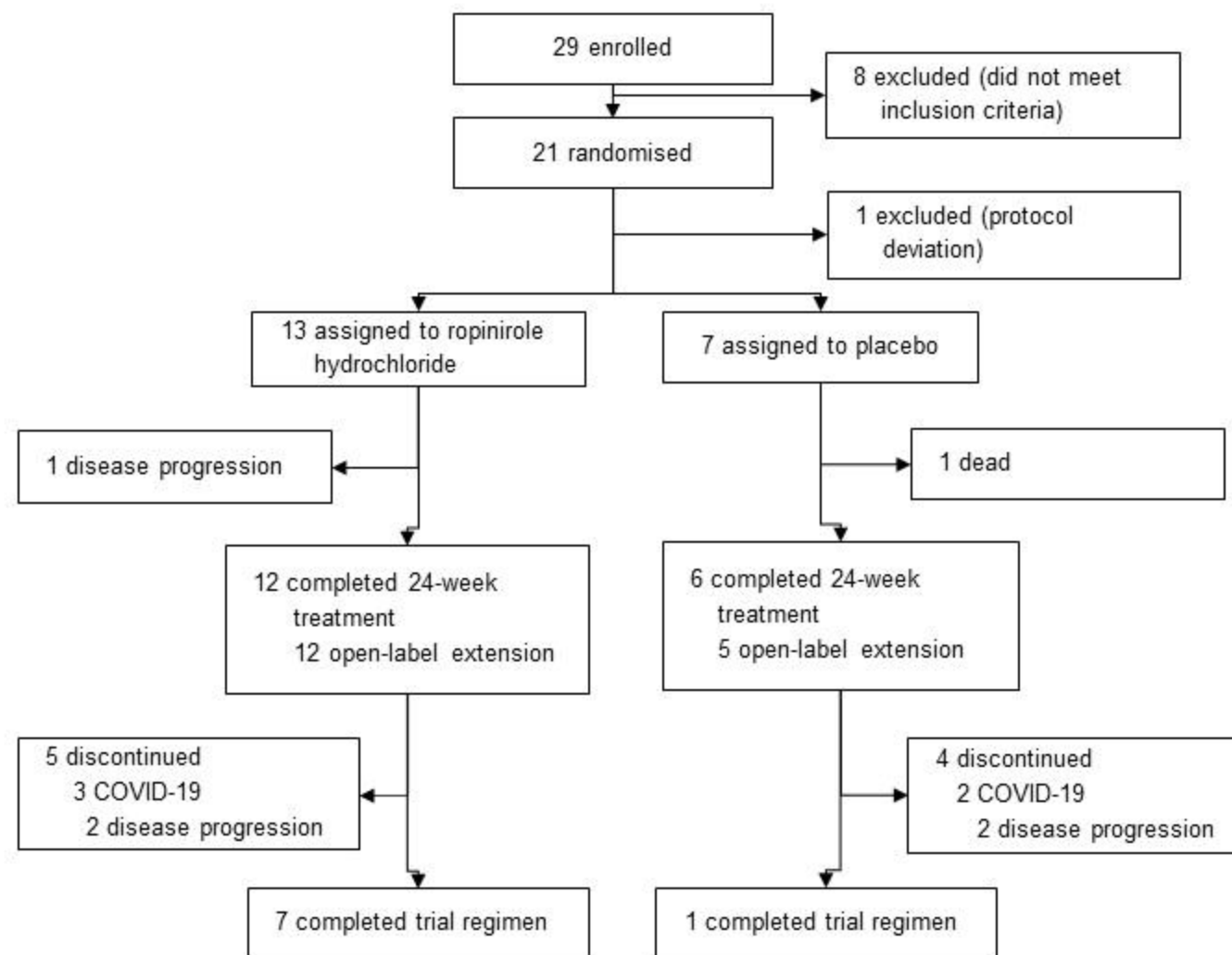
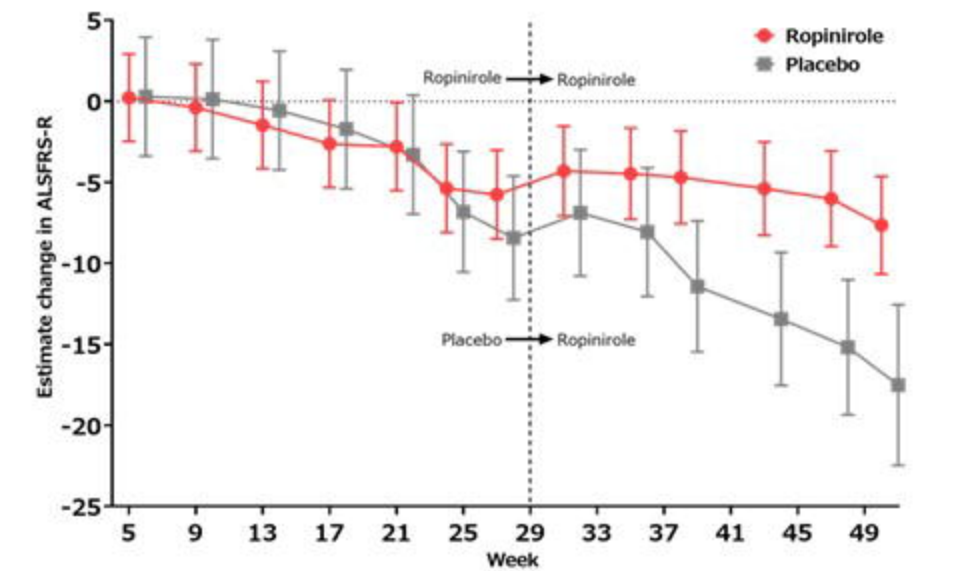


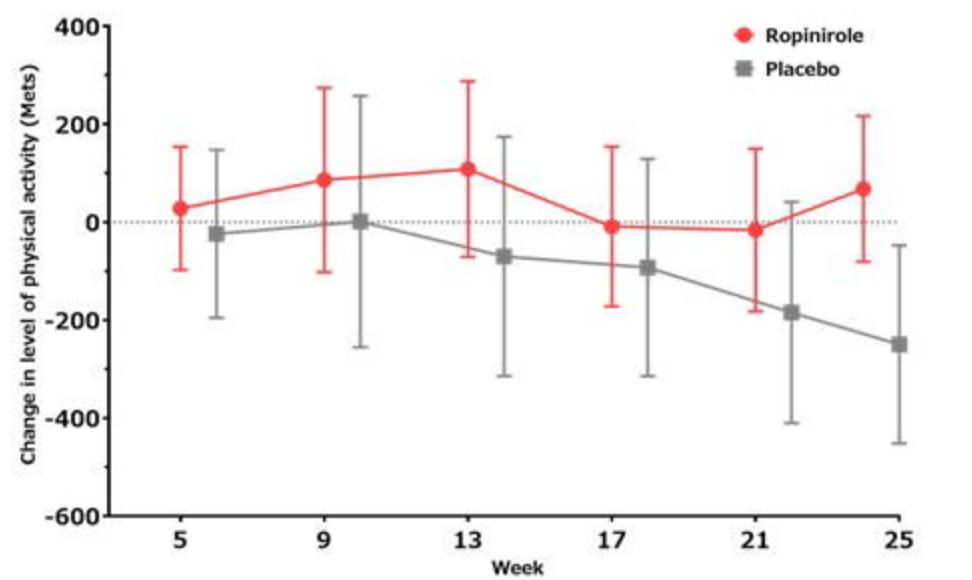
Figure 2

(A)



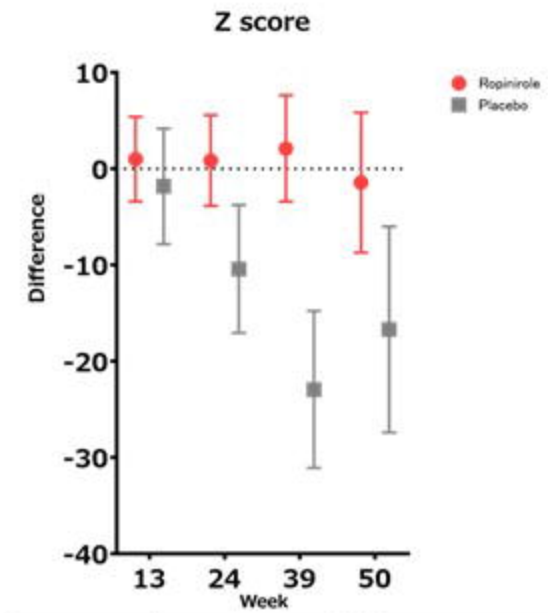
Time points	5w	9w	13w	17w	21w	24w	26-27w	29-31w	33-35w	37-39w	41-43w	45-47w	48-50w (or the end)
No. of participants (Ropinirole/Placebo)	13/7	13/7	13/7	13/7	12/7	12/6	12/5	11/5	10/5	10/5	9/4	8/4	7/1
Difference † (95% CI)	-0.05 (-4.61 to 4.50)	-0.53 (-5.08 to 4.02)	-0.89 (-5.44 to 3.66)	-0.90 (-5.45 to 3.65)	0.49 (-4.07 to 5.05)	1.46 (-3.15 to 6.07)	2.67 (-2.03 to 7.37)	2.58 (-2.21 to 7.36)	3.60 (-1.28 to 8.47)	6.73 (1.79 to 11.68)	8.04 (3.03 to 13.05)	9.16 (4.06 to 14.26)	9.86 (4.07 to 15.66)

(B)



Time points	5w	9w	13w	17w	21w	24w
No. of participants (Ropinirole/Placebo)	13/7	13/7	13/7	12/7	12/7	12/6
Difference † (95% CI)	51.8 (-160.9 to 264.4)	85.2 (-233.2 to 403.6)	178.4 (-124.8 to 481.5)	83.7 (-191.5 to 358.9)	168.2 (-112.4 to 448.9)	317.5 (66.3 to 568.7)

(C)



Time points	Z score			
No. of participants (Ropinirole/Placebo)	13w	24w	39w	50w
Difference † (95% CI)	2.81 (-12.85 to 18.47)	11.27 (-5.85 to 28.39)	25.04 (4.34 to 45.74)	15.27 (-11.92 to 42.47)

Figure 3

