

**Facilitating safe discharge through predicting disease progression in moderate COVID-19:  
a prospective study to develop and externally validate a clinical prediction model in  
resource-limited settings**

**SUPPLEMENTARY APPENDIX**

<b>CONTENTS</b>	<b>PAGE</b>
<b>1. Results of scoping review</b>	<b>2</b>
<b>2. Examples of near-patient tests for candidate biomarkers</b>	<b>4</b>
<b>3. Proportion of missing data for candidate predictors</b>	<b>5</b>
<b>4. Baseline characteristics of development and validation cohorts</b>	<b>6</b>
<b>5. Levels of supplemental oxygen support for participants who met the primary outcome</b>	<b>10</b>
<b>6. Kaplan-Meier curves to indicate time to meeting the primary outcome</b>	<b>11</b>
<b>7. Unadjusted and adjusted associations between candidate predictors and primary outcome</b>	<b>12</b>
<b>8. Classification measures for the different models in the validation cohort</b>	<b>14</b>
<b>9. Sensitivity and specificity for the different models in the validation cohort</b>	<b>17</b>
<b>10. Association of corticosteroid use with primary outcome</b>	<b>18</b>
<b>11. Association of corticosteroid use with candidate predictors</b>	<b>19</b>
<b>12. Association of RT-PCR Ct values with primary outcome</b>	<b>20</b>

**Results of scoping review conducted to inform biomarker longlisting for PRIORITISE study.**

*Search strategy*

Date performed: 1 June 2020

("severe acute respiratory syndrome coronavirus 2"[Supplementary Concept] OR coronavirus\*[tiab] OR SARS-CoV-2[tiab] OR 2019-nCoV[tiab] OR COVID-19[Supplementary Concept] OR COVID\*[tiab] OR "Wuhan seafood market pneumonia"[tiab])

**AND**

(Biomarkers[MeSH] OR Biomarker\*[tiab] OR "Biologic marker\*" [tiab] OR "Biological marker\*" [tiab] OR "Laboratory marker\*" [tiab] OR "Lab marker\*" [tiab])

**OR**

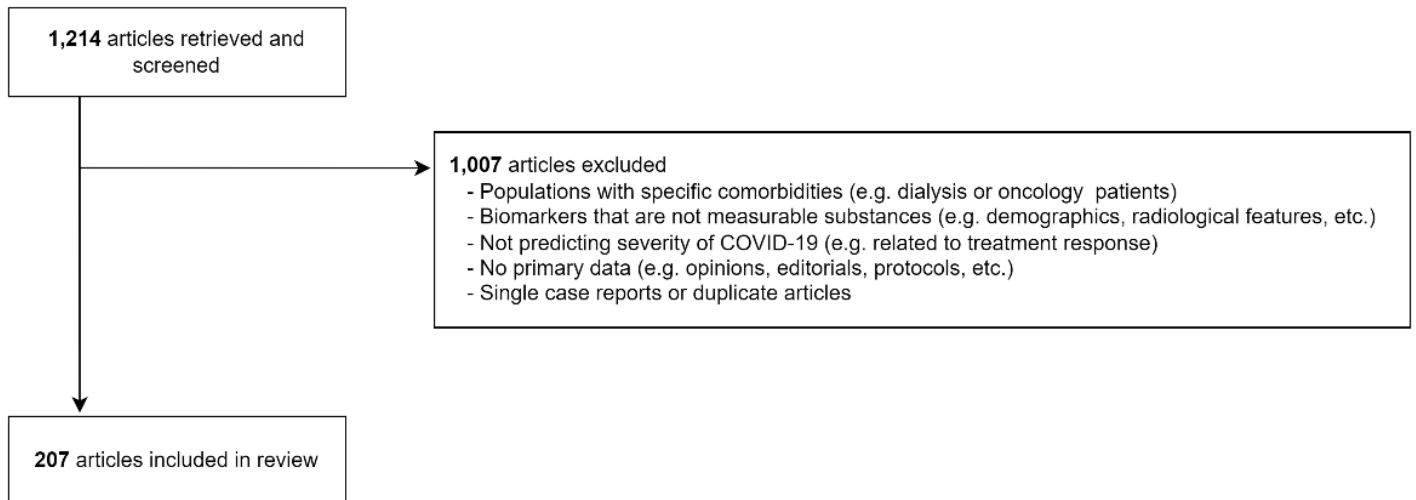
Prognosis[MeSH] OR Prognos\*[tiab] OR ((Predict\*[tiab] OR Risk\*[tiab]) AND "Severity"[tiab] OR Outcome\*[tiab] OR Progression[tiab] OR Deteriorat\*[tiab]))

**AND**

2019/11[PDAT] : 9999[PDAT]

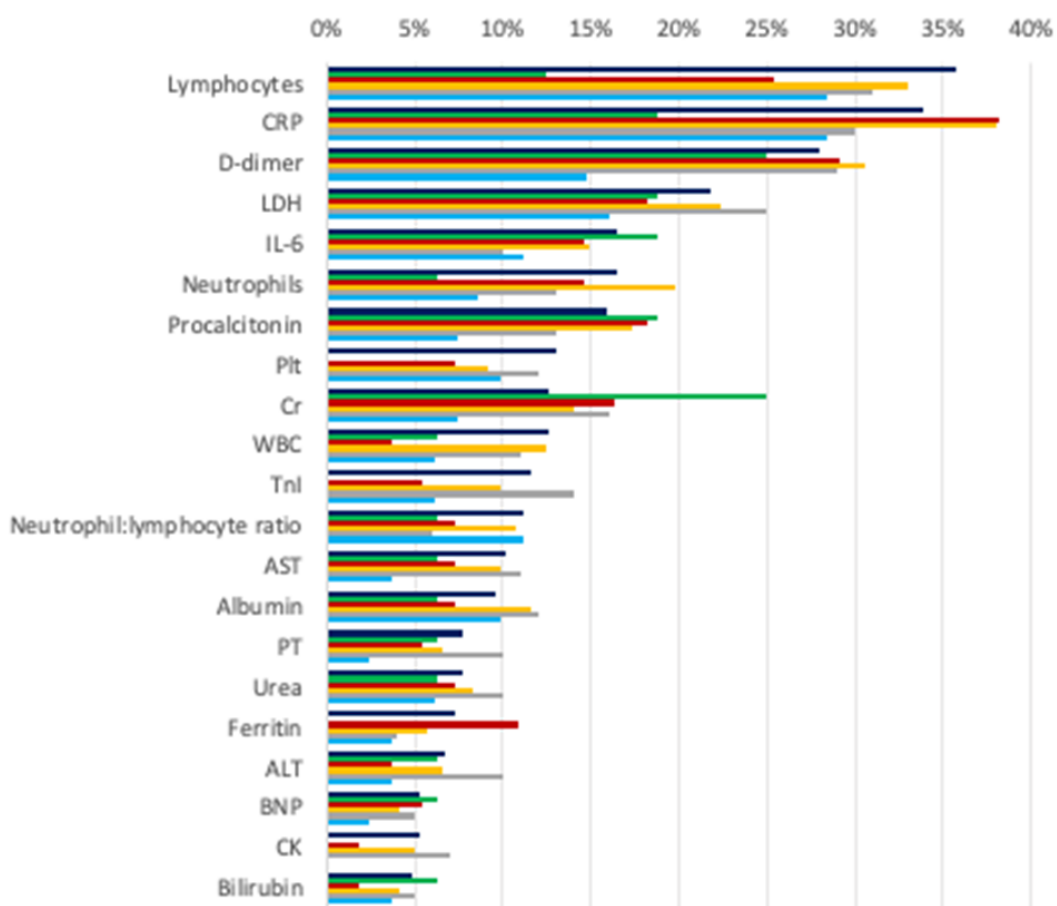
*Screening of results*

**Supplementary Figure 1. Screening of articles for inclusion.**



Summary of main results

**Supplementary Figure 2. Proportion of articles reporting statistically significant findings for different biochemical biomarkers in the prognostication of COVID-19.** Overall results (dark blue; n = 207) were broadly similar across different subgroups, including prospective studies (green; n = 16), studies outside China (red; n = 55); PCR/NGS-confirmed SARS-CoV-2 infection (yellow; n = 121); outcome determined after biomarker measurement i.e. prognostic vs. diagnostic (grey; n = 100), and studies with adjusted estimates (light blue; n = 81).



**Supplementary Table 1. Examples of commercially-available or late-stage development near-patient quantitative tests for candidate biochemical biomarkers shortlisted for inclusion in the clinical prediction models.**

Biomarker	Manufacturer	Test characteristics		
		Sample type	Sample volume	Turn-around-time
CRP	NycoCard™, Abbott	Whole blood, serum or plasma	5uL	3 minutes
D-dimer	RAMP, Response Biomedical	Whole blood	75uL	15 minutes
IL-6	IL-6, Hotgen	Serum	100uL	15 minutes
NLR	WBC DIFF, HemoCue®	Whole blood	10uL	5 minutes
PCT	BRAHMS PCT direct, Roche	Whole blood	20uL	20 minutes
sTREM-1	FIND, personal communication	Whole blood	TBC	TBC
suPAR	suPARnostic®, Virogates	Plasma	10uL	20 minutes

**Supplementary Table 2. Number of participants with missing data for candidate predictor variables, stratified by cohort.**

Variable	Number missing		
	Development cohort (n = 257)	Validation cohort (n = 166)	Overall (n = 423)
Age (years)	0/257	0/166	<b>0/423</b>
Sex	0/257	0/166	<b>0/423</b>
SpO <sub>2</sub>	0/257	0/166	<b>0/423</b>
CRP (mg/l)	0/257	8/166 (4.8%)	<b>8/423 (1.9%)</b>
D-dimer (ng/ml)	1/257 (0.4%)	2/166 (1.2%)	<b>3/423 (0.7%)</b>
IL-6 (pg/ml)	0/257	2/166 (1.2%)	<b>2/423 (0.5%)</b>
NLR	10/257 (3.9%)	1/166 (0.6%)	<b>11/423 (2.6%)</b>
PCT (ng/ml)	0/257	2/166 (1.2%)	<b>2/423 (0.5%)</b>
sTREM-1 (pg/ml)	0/257	2/166 (1.2%)	<b>2/423 (0.5%)</b>
suPAR (ng/ml)	0/257	0/166	<b>0/423</b>

**Supplementary Table 3. Baseline characteristics of development and validation cohorts, stratified by primary outcome status, including additional details on presenting symptoms and reported comorbidities.** Details for presenting symptoms and reported comorbidities with prevalence  $\geq 5\%$  in any of the outcome groups for either the development or validation cohorts are reported. Data on other reported comorbidities (chronic neurological disorder, liver disease, active tuberculosis, malignant neoplasm, HIV, and other immunosuppression) and presenting symptoms (otalgia, wheeze, lower chest indrawing, altered consciousness, seizures, conjunctivitis, skin rash, skin ulcers, and lymphadenopathy) not reported as prevalence  $< 5\%$  in all outcome groups. \*Missing data for continuous variables: BMI = 1; CRP = 8, D-dimer = 3, IL-6 = 2, NLR = 12; PCT = 2; sTREM-1 = 2; Ct value = 181. §Different specimen collection procedures and PCR assays were used at each site (appendix p21). †Seronegative defined as negative for both SARS-CoV-2 IgG and IgM antibodies. Median values (IQR) and p-values for Wilcoxon rank sum tests are reported for continuous variables. Fisher's exact or Pearson's Chi-squared test p-values are reported for categorical variables.

Baseline characteristic	DEVELOPMENT COHORT				VALIDATION COHORT				p-value
	Overall (n = 257)	Developed oxygen requirement		p-value	Overall (n = 166)	Developed oxygen requirement		p-value	
		No (n = 207)	Yes (n = 50)			No (n = 127)	Yes (n = 39)		
<b>Demographics</b>									
Age (years)	52.0 (40.0 to 61.0)	52.0 (40.0 to 60.0)	54.0 (42.2 to 62.0)	0.3	54.0 (41.2 to 63.0)	55.0 (41.5 to 63.0)	54.0 (41.0 to 66.0)	0.8	0.2
Male sex	185 / 257 (72%)	144 / 207 (70%)	41 / 50 (82%)	0.079	101 / 166 (61%)	76 / 127 (60%)	25 / 39 (64%)	0.6	0.017
BMI (kg/m <sup>2</sup> ) <sup>*</sup>	26.0 (23.6 to 28.7)	26.2 (23.8 to 28.8)	25.8 (22.4 to 28.3)	0.4	24.9 (23.4 to 27.6)	24.8 (23.4 to 27.6)	26.1 (23.7 to 27.6)	0.7	0.071
<b>Vital signs</b>									
Heart rate (bpm)	88.0 (80.0 to 97.0)	86.0 (79.0 to 96.0)	90.0 (86.0 to 99.5)	0.010	84.0 (74.0 to 92.0)	84.0 (74.0 to 90.0)	84.0 (77.0 to 94.0)	0.4	< 0.001
Respiratory rate (bpm)	22.0 (22.0 to 24.0)	22.0 (22.0 to 24.0)	22.0 (22.0 to 24.0)	0.3	24.0 (22.0 to 24.0)	22.0 (22.0 to 24.0)	24.0 (22.0 to 24.0)	0.12	0.006
Oxygen saturation (%)	98.0 (96.0 to 99.0)	98.0 (97.0 to 99.0)	96.0 (95.2 to 98.0)	< 0.001	98.0 (96.0 to 99.0)	98.0 (96.0 to 99.0)	96.0 (95.5 to 98.0)	0.002	0.5
Axillary temperature (°C)	36.8 (36.4 to 37.1)	36.7 (36.4 to 37.0)	36.9 (36.5 to 37.2)	0.045	36.9 (36.7 to 37.2)	36.9 (36.7 to 37.2)	37.0 (36.9 to 37.2)	0.053	< 0.001

Systolic BP (mmHg)	128·0 (116·0 to 138·0)	128·0 (116·0 to 140·0)	126·0 (118·0 to 134·8)	0·7	121·0 (110·0 to 130·0)	120·0 (110·0 to 130·0)	122·0 (110·0 to 131·0)	> 0·9	< 0·001
Diastolic BP (mmHg)	80·0 (72·0 to 88·0)	80·0 (72·0 to 88·0)	79·0 (70·0 to 88·0)	0·3	76·0 (70·0 to 82·0)	76·0 (70·0 to 82·0)	74·0 (67·0 to 80·0)	0·3	< 0·001
qSOFA score $\geq$ 2	13 / 257 (5·1%)	9 / 207 (4·3%)	4 / 50 (8·0%)	0·3	16 / 166 (9·6%)	10 / 127 (7·9%)	6 / 39 (15%)	0·2	0·069
<b>Comorbidities</b>									
Current smokers	10 / 257 (3·9%)	8 / 207 (3·9%)	2 / 50 (4·0%)	> 0·9	4 / 166 (2·4%)	3 / 127 (2·4%)	1 / 39 (2·6%)	> 0·9	0·4
Reported comorbidity #	165 / 257 (64%)	128 / 207 (62%)	37 / 50 (74%)	0·11	117 / 166 (70%)	91 / 127 (72%)	26 / 39 (67%)	0·6	0·2
Cardiovascular disease	21 / 252 (8·3%)	16 / 203 (7·9%)	5 / 49 (10%)	0·6	19 / 166 (11%)	15 / 127 (12%)	4 / 39 (10%)	> 0·9	0·3
Diabetes	92 / 255 (36%)	73 / 205 (36%)	19 / 50 (38%)	0·8	64 / 166 (39%)	55 / 127 (43%)	9 / 39 (23%)	0·023	0·6
Hypertension	89 / 256 (35%)	73 / 206 (35%)	16 / 50 (32%)	0·6	64 / 166 (39%)	47 / 127 (37%)	17 / 39 (44%)	0·5	0·4
Chronic lung disease	3 / 252 (1·2%)	3 / 203 (1·5%)	0 / 49 (0%)	> 0·9	3 / 166 (1·8%)	1 / 127 (0·8%)	2 / 39 (5·1%)	0·14	0·7
Asthma	16 / 252 (6·3%)	13 / 203 (6·4%)	3 / 49 (6·1%)	> 0·9	11 / 166 (6·6%)	9 / 127 (7·1%)	2 / 39 (5·1%)	> 0·9	> 0·9
Chronic kidney disease	10 / 252 (4·0%)	8 / 203 (3·9%)	2 / 49 (4·1%)	> 0·9	9 / 166 (5·4%)	5 / 127 (3·9%)	4 / 39 (10%)	0·2	0·5
<b>Presenting illness</b>									
Symptom duration (days)	6·0 (4·0 to 8·0)	6·0 (4·0 to 8·0)	5·5 (5·0 to 7·0)	0·8	6·0 (4·0 to 8·0)	6·0 (3·5 to 8·0)	5·0 (4·0 to 7·0)	0·5	0·10
History of fever	243 / 257 (95%)	196 / 207 (95%)	47 / 50 (94%)	0·7	155 / 166 (93%)	118 / 127 (93%)	37 / 39 (95%)	> 0·9	0·6
Breathlessness	154 / 257 (60%)	119 / 207 (57%)	35 / 50 (70%)	0·11	90 / 166 (54%)	65 / 127 (51%)	25 / 39 (64%)	0·2	0·2

Chest pain	59 / 257 (23%)	48 / 207 (23%)	11 / 50 (22%)	0.9	15 / 166 (9.0%)	9 / 127 (7.1%)	6 / 39 (15%)	0.12	< 0.001
Abdominal pain	35 / 257 (14%)	32 / 207 (15%)	3 / 50 (6.0%)	0.080	15 / 166 (9.0%)	12 / 127 (9.4%)	3 / 39 (7.7%)	> 0.9	0.2
Diarrhoea	80 / 257 (31%)	65 / 207 (31%)	15 / 50 (30%)	0.8	47 / 166 (28%)	33 / 127 (26%)	14 / 39 (36%)	0.2	0.5
Severe myalgia	140 / 257 (54%)	110 / 207 (53%)	30 / 50 (60%)	0.4	75 / 166 (45%)	65 / 127 (51%)	10 / 39 (26%)	0.005	0.062
Sore throat	87 / 257 (34%)	69 / 207 (33%)	18 / 50 (36%)	0.7	31 / 166 (19%)	23 / 127 (18%)	8 / 39 (21%)	0.7	< 0.001
Rhinorrhoea	49 / 257 (19%)	42 / 207 (20%)	7 / 50 (14%)	0.3	19 / 166 (11%)	14 / 127 (11%)	5 / 39 (13%)	0.8	0.037
Cough	205 / 257 (80%)	160 / 207 (77%)	45 / 50 (90%)	0.045	144 / 166 (87%)	109 / 127 (86%)	35 / 39 (90%)	0.5	0.065
Arthralgia	49 / 257 (19%)	37 / 207 (18%)	12 / 50 (24%)	> 0.9	2 / 166 (1.2%)	2 / 127 (1.6%)	0 / 39 (0%)	> 0.9	< 0.001
Fatigue	190 / 257 (74%)	153 / 207 (74%)	37 / 50 (74%)	> 0.9	97 / 166 (58%)	76 / 127 (60%)	21 / 39 (54%)	0.5	< 0.001
Anorexia	69 / 257 (27%)	52 / 207 (25%)	17 / 50 (34%)	0.2	14 / 166 (8.4%)	12 / 127 (9.4%)	2 / 39 (5.1%)	0.5	< 0.001
Nausea or vomiting	55 / 257 (21%)	42 / 207 (20%)	13 / 50 (26%)	0.4	23 / 166 (14%)	17 / 127 (13%)	6 / 39 (15%)	0.8	0.051
Headache	75 / 257 (29%)	65 / 207 (31%)	10 / 50 (20%)	0.11	41 / 166 (25%)	32 / 127 (25%)	9 / 39 (23%)	0.8	0.3
Anosmia	60 / 257 (23%)	52 / 207 (25%)	8 / 50 (16%)	0.2	13 / 166 (7.8%)	9 / 127 (7.1%)	4 / 39 (10%)	0.5	< 0.001
Aguesia	60 / 257 (23%)	51 / 207 (25%)	9 / 50 (18%)	0.3	19 / 166 (11%)	14 / 127 (11%)	5 / 39 (13%)	0.8	0.002
<b>Host biomarkers</b>									
CRP (mg/l) *	24.4 (3.9 to 88.9)	17.9 (2.8 to 85.4)	62.5 (19.7 to 134.4)	< 0.001	58.1 (17.2 to 147.1)	42.5 (12.3 to 111.9)	95.8 (52.8 to 176.9)	< 0.001	< 0.001

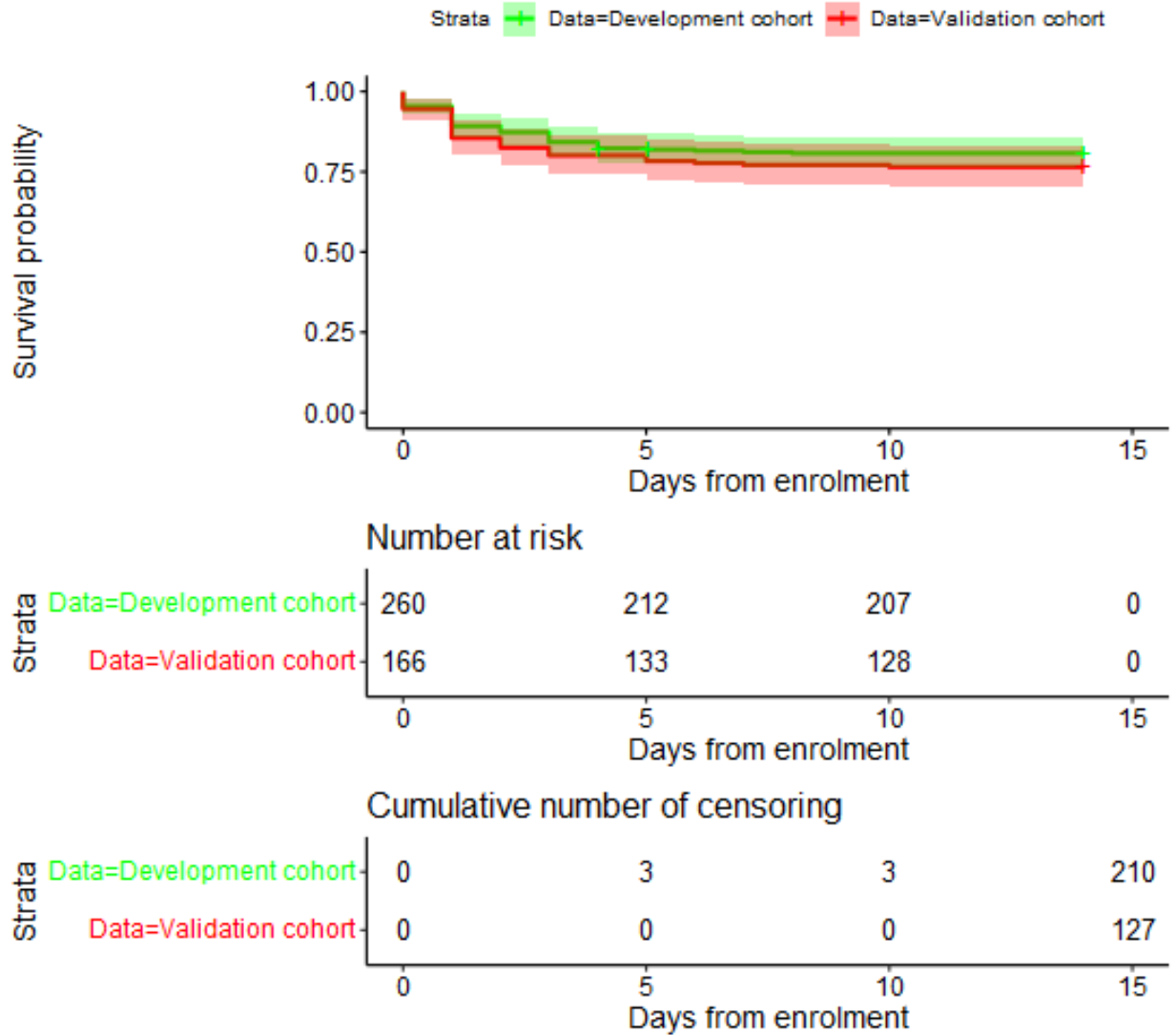


D-dimer (ng/ml) *	725.0 (382.4 to 1,466.4)	640.6 (329.7 to 1,234.9)	1,201.7 (679.9 to 2,307.0)	< 0.001	968.2 (620.7 to 1,599.0)	918.8 (579.0 to 1,454.9)	1,148.1 (829.5 to 3,200.2)	0.009	< 0.001
IL-6 (pg/ml) *	11.0 (4.9 to 36.2)	8.7 (4.2 to 27.9)	36.4 (18.4 to 70.7)	< 0.001	31.6 (13.9 to 63.0)	24.4 (11.4 to 47.2)	71.1 (39.4 to 98.9)	< 0.001	< 0.001
NLR *	3.2 (1.9 to 4.9)	2.9 (1.7 to 4.5)	4.4 (3.2 to 7.2)	< 0.001	2.8 (1.8 to 5.4)	2.5 (1.6 to 4.2)	5.3 (2.7 to 7.0)	< 0.001	0.6
PCT (ng/ml) *	0.1 (0.1 to 0.2)	0.1 (0.1 to 0.1)	0.1 (0.1 to 0.2)	< 0.001	0.1 (0.1 to 0.2)	0.1 (0.1 to 0.2)	0.1 (0.1 to 0.3)	0.3	0.004
sTREM-1 (pg/ml) *	378.0 (265.0 to 537.0)	362.0 (259.0 to 522.0)	424.5 (306.8 to 649.5)	0.055	419.0 (285.0 to 596.8)	389.0 (282.0 to 562.0)	437.0 (349.0 to 660.8)	0.13	0.2
suPAR (ng/ml)	4.2 (3.1 to 5.8)	4.0 (2.9 to 5.5)	5.4 (4.0 to 6.8)	< 0.001	4.1 (3.1 to 5.6)	3.8 (2.9 to 5.1)	5.5 (3.9 to 6.7)	< 0.001	0.9
<b>Viral markers</b>									
Ct value *§	26.0 (20.7 to 30.8)	26.0 (20.6 to 30.1)	26.4 (22.0 to 31.4)	0.6	32.1 (28.3 to 36.2)	32.8 (28.1 to 36.2)	31.5 (28.4 to 36.0)	> 0.9	< 0.001
Seronegative †	117 / 252 (46%)	90 / 203 (44%)	27 / 49 (55%)	0.2	73 / 160 (46%)	51 / 123 (41%)	22 / 37 (59%)	0.054	0.9

**Supplementary Table 4. Maximum level of supplemental oxygen support received by participants who met the primary outcome, stratified by cohort.** One participant (not included in this table) received supplemental oxygen via nasal cannula but did not meet the primary outcome as their SpO<sub>2</sub>/FiO<sub>2</sub> remained above 400. \*One participant met the endpoint on the basis of being prescribed oxygen at another licensed medical facility; all other participants who met the endpoint did so on the basis of an SpO<sub>2</sub> < 94% and/or SpO<sub>2</sub>/FiO<sub>2</sub> < 400 and/or death.

	<b>Development</b> (n = 257)	<b>Validation</b> (n = 166)	<b>Overall</b> (n=423)
<b>Number of participants meeting primary outcome</b>	50	39	89
<b>Deaths</b>	2	9	11
<b>Mechanical ventilation</b>	1	1	2
<b>Non-invasive ventilation</b>	5	10	15
<b>Supplemental oxygen via face mask and/or nasal cannula*</b>	32	17	49
<b>No supplemental oxygen received</b>	10	2	12

**Supplementary Figure 3. Kaplan-Meier survival curves indicating the time to meeting the primary outcome, stratified by cohort.** Coloured lines indicate survival probability for each cohort and shaded areas indicate 95% confidence intervals.



**Supplementary Table 5. Unadjusted and adjusted associations between candidate predictors and primary outcome in each model in the development cohort.** 1,000 bootstrap samples were used to estimate 95% confidence intervals for the Ridge regression coefficients. \* Transformations used due to non-linear relationship between predictor and outcome: Log<sub>10</sub> used for CRP and D-dimer;  $\frac{1}{\sqrt{IL-6/100}}$  used for IL-6. As a result, odds ratios are not comparable between continuous predictors, as scales cannot be standardised. Odds ratios are expressed for a one unit increase in non-transformed continuous predictors (age, NLR, PCT, sTREM-1, suPAR) and a ten-fold increase in CRP or D-dimer.

Variable	Unadjusted odds ratio (95% CI)	Unadjusted c-statistic (95% CI)	Ridge regression coefficient (95% CI)	Adjusted odds ratio (95% CI)
<b>Clinical model</b>				
Intercept	NA	NA	41.89 (23.14 to 67.65)	NA
Male sex	1.99 (0.98 to 5.24)	NA	0.31 (-0.30 to 1.22)	1.37 (0.74 to 3.37)
Age (years)	1.01 (0.99 to 1.03)	0.55 (0.48 to 0.64)	0.00 (-0.02 to 0.02)	1.00 (0.98 to 1.02)
SpO <sub>2</sub>	<b>0.56</b> <b>(0.43 to 0.71)</b>	0.72 (0.64 to 0.80)	-0.45 (-0.71 to -0.26)	<b>0.64</b> <b>(0.49 to 0.77)</b>
<b>CRP model</b>				
Intercept	NA	NA	40.47 (21.51 to 66.25)	NA
Male sex	NA	NA	0.16 (-0.56 to 1.03)	1.18 (0.57 to 2.79)
Age (years)	NA	NA	-0.00 (-0.03 to 0.02)	1.00 (0.97 to 1.02)
SpO <sub>2</sub>	NA	NA	-0.44 (-0.71 to -0.24)	<b>0.64</b> <b>(0.49 to 0.78)</b>
CRP (mg/l) *	<b>2.24</b> <b>(1.59 to 3.52)</b>	0.66 (0.58 to 0.73)	0.54 (0.23 to 0.98)	<b>1.71</b> <b>(1.26 to 2.65)</b>
<b>D-dimer model</b>				
Intercept	NA	NA	38.15 (22.19 to 67.18)	NA
Male sex	NA	NA	0.34 (-0.29 to 1.26)	1.40 (0.75 to 3.54)
Age (years)	NA	NA	-0.00 (-0.03 to 0.02)	1.00 (0.97 to 1.02)
SpO <sub>2</sub>	NA	NA	-0.44 (-0.75 to -0.28)	<b>0.65</b> <b>(0.47 to 0.76)</b>
D-dimer (ng/ml) *	<b>3.32</b> <b>(1.85 to 6.89)</b>	0.67 (0.60 to 0.75)	0.98 (0.47 to 1.88)	<b>2.67</b> <b>(1.60 to 6.54)</b>
<b>IL-6 model</b>				
Intercept	NA	NA	39.92 (24.84 to 64.91)	NA
Male sex	NA	NA	0.11 (-0.64 to 1.02)	1.11 (0.53 to 2.76)
Age (years)	NA	NA	-0.01 (-0.03 to 0.02)	0.99 (0.97 to 1.02)

SpO <sub>2</sub>	NA	NA	-0.41 (-0.68 to -0.25)	<b>0.66</b> <b>(0.51 to 0.78)</b>
IL-6 (pg/ml) *	<b>0.53</b> <b>(0.39 to 0.65)</b>	0.75 (0.68 to 0.82)	-0.44 (-0.66 to -0.25)	<b>0.65</b> <b>(0.52 to 0.78)</b>
<b>NLR model</b>				
Intercept	NA	NA	38.27 (19.93 to 66.20)	NA
Male sex	NA	NA	0.21 (-0.45 to 0.98)	1.24 (0.63 to 2.65)
Age (years)	NA	NA	-0.00 (-0.03 to 0.02)	1.00 (0.97 to 1.02)
SpO <sub>2</sub>	NA	NA	-0.41 (-0.71 to -0.22)	<b>0.66</b> <b>(0.49 to 0.80)</b>
NLR	<b>1.15</b> <b>(1.07 to 1.27)</b>	0.69 (0.61 to 0.77)	0.10 (0.04 to 0.20)	<b>1.10</b> <b>(1.04 to 1.22)</b>
<b>PCT model</b>				
Intercept	NA	NA	41.03 (1.03 to 66.59)	NA
Male sex	NA	NA	0.32 (-0.29 to 1.19)	1.37 (0.75 to 3.28)
Age (years)	NA	NA	0.00 (-0.02 to 0.02)	1.00 (0.98 to 1.02)
SpO <sub>2</sub>	NA	NA	-0.44 (-0.71 to -0.03)	<b>0.64</b> <b>(0.49 to 0.97)</b>
PCT (ng/ml)	0.96 (0.80 to 1.74)	0.66 (0.58 to 0.74)	-0.03 (-0.03 to 1.28)	0.97 (0.97 to 3.60)
<b>sTREM-1 model</b>				
Intercept	NA	NA	42.55 (22.26 to 70.09)	NA
Male sex	NA	NA	0.28 (-0.35 to 1.11)	1.33 (0.71 to 3.02)
Age (years)	NA	NA	0.00 (-0.02 to 0.02)	1.00 (0.98 to 1.02)
SpO <sub>2</sub>	NA	NA	-0.46 (-0.746 to -0.25)	<b>0.63</b> <b>(0.48 to 0.78)</b>
sTREM-1 (pg/ml)	1.00 (1.00 to 1.00)	0.58 (0.48 to 0.68)	0.00 (-0.00 to 0.00)	1.00 (1.00 to 1.00)
<b>suPAR model</b>				
Intercept	NA	NA	38.82 (21.24 to 66.61)	NA
Male sex	NA	NA	0.38 (-0.24 to 1.32)	1.46 (0.79 to 3.74)
Age (years)	NA	NA	-0.00 (-0.03 to 0.02)	1.00 (0.98 to 1.02)
SpO <sub>2</sub>	NA	NA	-0.42 (-0.71 to -0.24)	<b>0.65</b> <b>(0.49 to 0.79)</b>
suPAR (ng/ml)	<b>1.20</b> <b>(1.11 to 1.36)</b>	0.68 (0.61 to 0.76)	0.14 (0.06 to 0.25)	<b>1.15</b> <b>(1.06 to 1.29)</b>

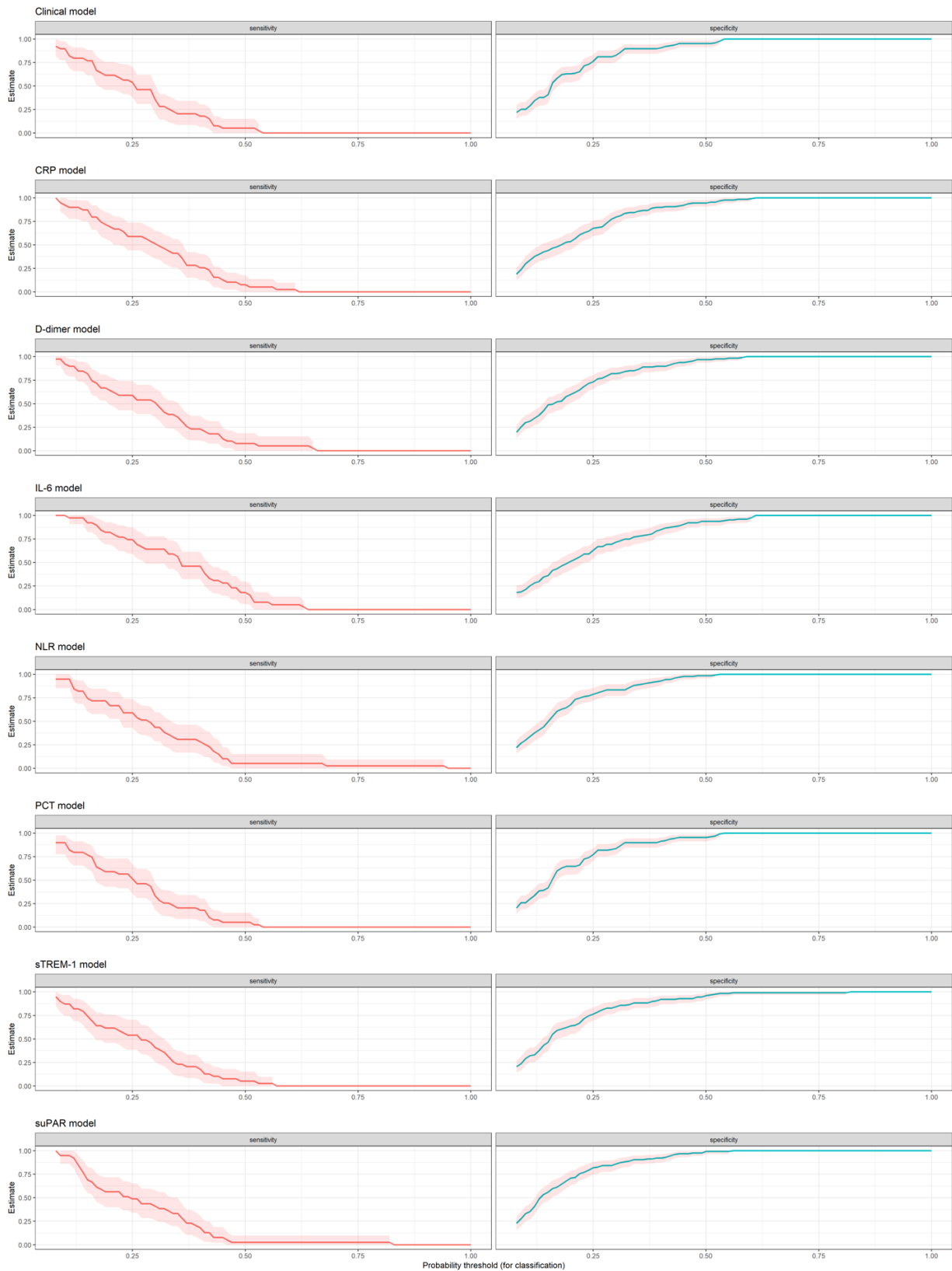
**Supplementary Table 6. Sensitivity, specificity, negative predictive value and positive predictive value for each model at different cut-offs in the validation cohort.** A cut-off of 0.1 reflects a management strategy in which any patient with a predicted risk of requiring oxygen  $\geq 10\%$  is admitted.

	Sensitivity (95% CI)	Specificity (95% CI)	Negative likelihood ratio (95% CI)	Positive likelihood ratio (95% CI)	Negative predictive value (95% CI)	Positive predictive value (95% CI)
<b>Clinical model</b>						
0·1	89·7 (75·8 to 97·1)	25·2 (17·9 to 33·7)	0·41 (0·15 to 1·08)	1·20 (1·04 to 1·39)	88·9 (73·9 to 96·9)	26·9 (19·5 to 35·4)
0·15	76·9 (60·7 to 88·9)	40·9 (32·3 to 50·2)	0·56 (0·31 to 1·04)	1·30 (1·04 to 1·63)	85·3 (73·8 to 93·0)	28·6 (20·2 to 38·2)
0·20	61·5 (44·6 to 76·6)	62·9 (53·9 to 71·4)	0·61 (0·40 to 0·93)	1·66 (1·19 to 2·33)	84·2 (75·3 to 90·9)	33·8 (23·0 to 46·0)
<b>IL-6 model</b>						
0·1	100 (90·9 to 100)	21·3 (14·5 to 29·4)	0 (NA)	1·27 (1·16 to 1·39)	100 (87·2 to 100)	28·1 (20·8 to 36·3)
0·15	92·3 (79·1 to 98·4)	36·2 (27·9 to 45·2)	0·21 (0·07 to 0·65)	1·45 (1·23 to 1·70)	93·9 (83·1 to 98·7)	30·8 (22·6 to 39·9)
0·20	82·1 (66·5 to 92·5)	51·2 (42·2 to 60·2)	0·35 (0·18 to 0·70)	1·68 (1·33 to 2·12)	90·3 (80·9 to 96·0)	34·0 (24·6 to 44·5)
<b>NLR model</b>						
0·1	95·0 (82·7 to 99·3)	29·9 (22·1 to 38·7)	0·17 (0·04 to 0·68)	1·35 (1·18 to 1·55)	95·0 (83·1 to 99·4)	29·4 (21·6 to 38·1)
0·15	74·4 (57·9 to 86·9)	49·6 (40·6 to 58·6)	0·52 (0·29 to 0·91)	1·48 (1·15 to 1·90)	86·3 (76·3 to 93·2)	31·2 (21·9 to 41·6)
0·20	66·7 (49·8 to 80·9)	67·7 (58·9 to 75·7)	0·49 (0·31 to 0·78)	2·10 (1·48 to 2·89)	86·9 (78·6 to 92·8)	38·8 (27·1 to 51·5)
<b>suPAR model</b>						
0·1	95·0 (82·7 to 99·4)	33·1 (24·9 to 41·9)	0·16 (0·04 to 0·61)	1·42 (1·23 to 1·63)	95·4 (84·5 to 99·4)	30·3 (22·3 to 39·3)
0·15	69·2 (52·4 to 82·9)	55·9 (46·8 to 64·7)	0·55 (0·34 to 0·90)	1·57 (1·18 to 2·10)	85·5 (76·1 to 92·3)	32·5 (22·7 to 43·7)
0·20	56·4 (39·6 to 72·2)	70·9 (62·2 to 78·6)	0·62 (0·42 to 0·89)	1·94 (1·32 to 2·85)	84·1 (75·8 to 90·4)	37·3 (25·0 to 50·9)
<b>CRP model</b>						
0·1	92·3 (79·1 to 98·4)	29·9 (22·1 to 38·7)	0·26 (0·08 to 0·79)	1·32 (1·14 to 1·52)	92·7 (80·1 to 98·4)	28·8 (21·1 to 37·6)
0·15	87·2 (72·6 to 95·7)	44·1 (35·3 to 53·2)	0·29 (0·13 to 0·67)	1·56 (1·28 to 1·90)	91·8 (81·9 to 97·3)	32·4 (23·6 to 42·2)
0·20	69·2 (52·4 to 82·9)	53·5 (44·5 to 62·4)	0·57 (0·35 to 0·95)	1·49 (1·13 to 1·97)	85·0 (75·3 to 92·0)	31·4 (21·8 to 42·3)
<b>D-dimer model</b>						
0·1	92·3 (79·1 to 98·4)	29·9 (22·1 to 38·7)	0·26 (0·08 to 0·79)	1·32 (1·14 to 1·52)	92·7 (80·1 to 98·5)	28·8 (21·1 to 37·6)
0·15	82·1 (66·5 to 92·5)	48·8 (39·8 to 57·8)	0·37 (0·18 to 0·74)	1·60 (1·28 to 2·01)	89·9 (80·2 to 95·8)	32·9 (23·8 to 43·3)
0·20	64·1 (47·2 to 78·8)	59·8 (50·8 to 68·4)	0·6 (0·39 to 0·93)	1·60 (1·16 to 2·19)	84·4 (75·3 to 91·2)	32·8 (22·5 to 44·6)
<b>PCT model</b>						

0.1	89.7 (75.8 to 97.1)	25.9 (18.6 to 34.5)	0.39 (0.15 to 1.05)	1.21 (1.05 to 1.41)	89.2 (74.6 to 96.8)	27.1 (19.7 to 35.7)
0.15	76.9 (60.7 to 88.9)	41.7 (33.1 to 50.8)	0.55 (0.3 to 1.02)	1.32 (1.05 to 1.66)	85.5 (74.2 to 93.1)	28.9 (20.4 to 38.6)
0.20	58.9 (42.1 to 74.4)	64.6 (55.6 to 72.6)	0.64 (0.43 to 0.95)	1.66 (1.17 to 2.37)	83.7 (78.8 to 90.4)	33.8 (22.8 to 46.3)
<b>sTREM-1 model</b>						
0.1	87.2 (72.6 to 95.7)	29.1 (21.4 to 37.9)	0.44 (0.19 to 1.04)	1.23 (1.04 to 1.45)	88.1 (74.4 to 96.0)	27.4 (19.8 to 36.2)
0.15	74.4 (57.9 to 86.9)	46.5 (37.6 to 55.5)	0.55 (0.31 to 0.97)	1.36 (1.09 to 1.77)	85.5 (74.9 to 92.8)	29.9 (21.0 to 40.0)
0.20	61.5 (44.6 to 76.6)	63.8 (54.8 to 72.1)	0.60 (0.40 to 0.92)	1.7 (1.21 to 2.38)	84.4 (75.5 to 90.9)	34.3 (23.4 to 46.6)



**Supplementary Figure 4. Sensitivity and specificity for each model in the validation cohort. Coloured lines indicate point estimates and pink shaded areas indicate 95% confidence intervals.**



**Supplementary Table 7. Association of corticosteroid use with primary outcome.** Corticosteroid use is defined as use of oral or parenteral steroids occurring at least one calendar day prior to developing an oxygen requirement for participants who met the primary outcome.

		Developed oxygen requirement			Relative risk (95% CI)	p-value
		Yes	No	TOTAL		
<b>All participants</b>						
Corticosteroid use	Yes	31	127	158	0.90 (0.61-1.32)	0.58
	No	58	207	265		
	<b>TOTAL</b>	<b>89</b>	<b>334</b>	<b>423</b>		
<b>AIIMS participants</b>						
Corticosteroid use	Yes	12	53	65	0.73 (0.37-1.42)	0.35
	No	15	44	59		
	<b>TOTAL</b>	<b>27</b>	<b>97</b>	<b>124</b>		
<b>CMC participants</b>						
Corticosteroid use	Yes	19	74	93	0.98 (0.60-1.58)	0.93
	No	43	163	206		
	<b>TOTAL</b>	<b>62</b>	<b>237</b>	<b>299</b>		

**Supplementary Table 8. Candidate predictor variables, stratified by corticosteroid use.** \*Missing data: CRP = 8, D-dimer = 3, IL-6 = 2, NLR = 12; PCT = 2; sTREM-1 = 2. Median values (IQR) and p-values for Wilcoxon rank sum tests are reported for continuous variables. Pearson's Chi-squared test p-values are reported for categorical variables.

Candidate predictor	Overall (n = 423)	Corticosteroid use		p-value
		No (n = 265)	Yes (n = 158)	
Age (years)	53.0 (41.0 to 62.0)	53.0 (40.0 to 62.0)	54.5 (42.0 to 62.0)	0.4
Male sex	286 / 423 (68%)	175 / 265 (66%)	111 / 158 (70%)	0.4
Oxygen saturation (%)	98.0 (96.0 to 99.0)	98.0 (96.0 to 99.0)	97.0 (96.0 to 98.0)	0.017
CRP (mg/l) *	36.7 (7.0 to 108.6)	37.4 (6.8 to 110.3)	35.5 (7.3 to 101.0)	0.8
D-dimer (ng/ml) *	856.1 (470.8 to 1,522.7)	846.7 (484.0 to 1,484.5)	882.1 (458.4 to 1,706.4)	0.6
IL-6 (pg/ml) *	19.8 (6.6 to 47.6)	21.2 (7.2 to 53.9)	15.4 (4.8 to 43.2)	0.042
NLR *	3.1 (1.9 to 4.9)	2.7 (1.7 to 4.3)	3.7 (2.3 to 6.2)	< 0.001
PCT (ng/ml) *	0.1 (0.1 to 0.2)	0.1 (0.1 to 0.2)	0.1 (0.1 to 0.2)	0.8
sTREM-1 (pg/ml) *	394.0 (272.0 to 563.0)	400.0 (269.0 to 563.0)	381.0 (281.2 to 565.2)	> 0.9
suPAR (ng/ml)	4.2 (3.1 to 5.7)	4.1 (3.0 to 5.6)	4.3 (3.2 to 5.8)	0.2

**Supplementary Table 9. Association of baseline Ct value with primary outcome, stratified by collection technique, PCR platform or both.** Nasopharyngeal swabs (NPS) were collected at CMC and combined nasopharyngeal and oropharyngeal swabs (OPS) were collected at AIIMS. Only swabs collected within the 24 hours prior to recruitment (n = 242/423) are included in this sub-analysis. All swabs were tested using the Cepheid Xpert Xpress SARS-CoV-2, CA at AIIMS. Both the Cepheid Xpert Xpress SARS-CoV-2, CA and Altona RealStar SARS-CoV-2 rRT-PCR, Hamburg were used at CMC. Median values (IQR) and p-values for Wilcoxon rank sum tests are reported.

Stratification factor	Ct value			p-value
	Overall	Developed oxygen requirement		
		No	Yes	
All participants (n = 242)	27.7 (23.1 to 32.7)	27.4 (22.8 to 33.0)	28.4 (24.1 to 32.4)	0.4
<b>Collection technique (n = 242)</b>				
NPS (n = 118)	31.5 (26.7 to 35.7)	31.5 (26.1 to 35.8)	31.5 (28.0 to 34.6)	0.9
Combined NPS and OPS (n = 124)	25.3 (20.5 to 28.5)	25.5 (20.2 to 28.8)	24.5 (21.4 to 27.8)	> 0.9
<b>PCR platform (n = 242)</b>				
Cepheid Xpert Xpress (n = 173)	26.9 (21.0 to 31.5)	26.6 (20.7 to 30.9)	27.6 (24.0 to 32.1)	0.2
Altona RealStar (n = 69)	31.6 (27.0 to 35.4)	31.8 (27.0 to 35.4)	31.2 (28.0 to 35.4)	0.6
<b>PCR platform at CMC site (n = 118)</b>				
Cepheid Xpert Xpress (n = 49)	31.2 (26.3 to 35.8)	30.7 (23.2 to 36.1)	31.9 (28.4 to 33.3)	0.4
Altona RealStar (n = 69)	31.6 (27.0 to 35.4)	31.8 (27.0 to 35.4)	31.2 (28.0 to 35.4)	0.6