

Introduction and community transmission of SARS-CoV-2 lineage A.2.5 in Florida with novel spike
INDELS

Sarah E. Schmedes¹, Taj Azarian², Eleonora Cella², Jessy Motes¹, Omer Tekin¹, James Weiss³, Nancimae Miller⁴, Jason Blanton^{1,*}

¹Bureau of Public Health Laboratories, Florida Department of Health, Jacksonville, Florida

²Burnett School of Biomedical Sciences, University of Central Florida, Orlando, Florida

³Bureau of Public Health Laboratories, Florida Department of Health, Miami, Florida

⁴Pathology Consultants of South Broward, Memorial Healthcare System, Hollywood, Florida

*Corresponding author

Abstract

SARS-CoV-2 (SC2) variants of concern (VOC) continue to emerge and spread globally, threatening the use of monoclonal antibody therapies and vaccine effectiveness. Several mutations in the SC2 spike glycoprotein have been associated with reduction in antibody neutralization. Genomic surveillance of SC2 variants has been imperative to inform the public health response regarding the use of clinical therapies in specific jurisdictions based on the proportion of particular variants (e.g., Gamma (P.1)) in a region. Florida Department of Health Bureau of Public Health Laboratories (BPHL) performs tiled-amplicon whole genome sequencing for baseline and targeted surveillance of SC2 isolates in Florida from clinical specimens collected from county health departments and hospitals throughout the state. Here, we describe the introduction of SC2 lineage A.2.5 in Florida, which contains S:L452R (a substitution of therapeutic concern) and two novel Spike INDELS, the deletion of 141-143 and ins215AGY, with unknown implications on immune response. The A.2.5 lineage was first detected in Florida among an outbreak at a healthcare facility in January 2021, and subsequent A.2.5 isolates were detected across all geographical regions throughout the state. A time-scaled maximum clade credibility phylogeny determined there were at least eight separate introductions of A.2.5 in the state. The time of introduction of a monophyletic Florida clade was established to be December 2020. The Spike INDELS were determined to reside in the N-terminal domain, a region associated with antibody neutralization. As community transmission of SARS-CoV-2 in Florida continues, genomic surveillance of circulating variants in Florida and the detection of emerging variants are critical for informing public health response to COVID-19.

Introduction

SARS-CoV-2 (SC2) variants of concern continue to emerge and spread globally, highlighting the demand for increased SC2 surveillance at the local, national, and international level. Tiled-amplicon whole-genome sequencing (WGS) or targeted enrichment WGS has been the gold standard for SC2 surveillance to identify and track lineages which contain amino acid substitutions and/or insertions/deletions (INDELS) within the spike glycoprotein, which binds to the ACE-2 receptor during infection. Several spike glycoprotein mutations in VOCs have shown to have significant public health impacts such as increased transmission (1-4) and may pose a threat to front-line therapeutics and vaccines (4-9). Active SC2 surveillance by WGS is imperative to detect novel spike mutations as soon as they emerge.

The Centers for Disease Control and Prevention (CDC) published a United States (U.S.) government interagency variant classification list characterizing variants in the United States with defined attributes: variant of interest (VOI), variant of concern (VOC), and variant of high consequence (VOHC) (10). As of June 4, 2021, VOCs and VOIs comprised the majority of all lineages in the U.S. Among U.S. jurisdictions, Florida had one of the highest burdens of VOCs (> 80%) amid lineages circulating within the state (11).

Florida Department of Health (FDOH) Bureau of Public Health Laboratories (BPHL) has sequenced COVID-19-positive samples collected from patients throughout the state, as early as March 4, 2020. BPHL actively surveils lineages of public health interest in Florida, including variant classifications designated by CDC, WHO, and other international organizations (10, 12, 13), and actively monitors changes in lineage frequencies in the state in addition to the emergence of novel spike mutations which may warrant further investigation.

In January 2021, BPHL detected the first cases of then SC2 lineage A.2.4 among an outbreak at a south Florida healthcare facility. Shortly after this first detection, additional A.2.4 cases were detected in routine surveillance samples collected from patients geographically dispersed across the state. The A.2.4

lineage, which first emerged in Panama (14), comprised a distinct clade which contained mainly U.S. samples, including those from Florida. This separate clade was soon reclassified as lineage A.2.5 and was defined as a Central American/U.S. lineage (15).

SC2 A.2.5 isolates detected in Florida became of particular interest as this lineage was first detected among a healthcare facility outbreak involving both patients and staff. The A.2.5 isolates contained several spike mutations of concern which warranted further investigation, including a CDC-designated substitution of therapeutic concern (L452R), the independent emergence of D614G in an A lineage, and two novel spike INDELS (LGV141-143del and ins215AGY) not yet seen in Florida, nor described in the literature. Here, we describe the initial introductions and spread of A.2.5 in Florida and further characterize spike glycoprotein mutations LGV141-143del and ins215AGY.

Materials and Methods

RNA extraction from clinical specimens

Primary specimens were received at BPHL and confirmed for the presence of SARS-CoV-2 RNA. RNA was purified by multiple methods, including: Kingfisher combined with the Thermo Fisher MagMAX Viral/Pathogen II (MVP II) Nucleic Acid Isolation kit (Applied Biosystems by Thermo Fisher Scientific, Waltham, MA); Abbott m2000 System combined with the Abbott RealTime SARS-CoV-2 assay (Abbott, Lake County, IL); MagNA Pure 96 combined with the MagNA Pure 96 DNA and Viral NA Small Volume Kit (Roche, Indianapolis, IN); MagNA Pure LC 2.0 combined with the MagNA Pure LC Total Nucleic Acid Isolation Kit (Roche, Indianapolis, IN); and EZ1 Advanced combined with the EZ1 DSP Virus Kit (Qiagen, Germantown, MD), QIAamp DSP Viral RNA Mini Kit (Qiagen, Germantown, MD).

cDNA and amplicon generation/Library preparation

The BPHL SARS-CoV-2 Tiled Amplicon Illumina Sequencing protocol (16) was followed.

Sequencing

Libraries were sequenced on either an Illumina MiSeq or NextSeq 550 Dx. For the MiSeq: The protocol described at (16) was followed. For the NextSeq 550Dx: The sample pools were diluted to 4 nM based on the Qubit measurements and Agilent sizing information, and 5 μ L of the 4 nM pool was denatured with 5 μ L of 0.2 N NaOH. Amplicon libraries were diluted to 1.5 pM in Illumina's HT1 buffer, spiked with 1% PhiX, and sequenced using a NextSeq 500/550 Mid Output Kit v2.5 (300 cycle).

Consensus assembly generation and variant profiles

SARS-CoV-2 consensus assemblies were generated using a custom pipeline, FLAQ-SC2. Quality metrics were generated for raw sequence reads using fastqc v0.11.9 (<http://www.bioinformatics.babraham.ac.uk/projects/fastqc/>), and raw fastqs were quality filtered and trimmed (SLIDINGWINDOW:4:30 MINLEN:75 TRAILING:20) using trimmomatic v0.39 (17). Sequence adapter and Phix contamination were removed using bbduk (BBMap v38.79) (<https://sourceforge.net/projects/bbmap/>). Cleaned reads were mapped to SARS-CoV-2 reference NC_045512.2 using bwa mem v0.7.17-r1188 (18). PCR duplicates were marked and removed using samtools v1.9 (19). ARTIC primer sequences (https://github.com/artic-network/artic-ncov2019/tree/master/primer_schemes/nCoV-2019/V3) were trimmed from bam files using ivar trim v1.2.2 (20). Variants were called using samtools mpileup v1.9 (19) and ivar variant v1.2.2 (20), and consensus assemblies were generated using samtools mpileup v1.9 (19) and ivar consensus v1.2.2 (20). Only variants as the major allele were included in the final consensus assembly, and bases <10x were

incorporated as Ns. Read mapping metrics were generated using samtools coverage v1.10 (19). Only samples with $\geq 80\%$ genome coverage at $\geq 100\times$ mean read depth were submitted to public repositories (i.e., NCBI Genbank (21) and GISAID (<https://www.gisaid.org/>)) and included in this study. SC2 lineages (22) were determined using Pangolin v2.3.6-pangolearn-2021-03-16 (<https://github.com/cov-lineages/pangolin>). Amino acid substitution and INDEL data were also generated using the command-line version of NextClade v0.14.1 (<https://clades.nextstrain.org/>).

Data availability

BPHL A.2.5 consensus genomes are available on NCBI Genbank (MW586581-MW586584, MW586586, MW586589, MW689883, MW689890, MW689894, MW689907, MW715557, MW725772, MW735564, MW735565, MW737635, MW742685, MW810328, MW810330) and GISAID (EPI_ISL_965016-EPI_ISL_965019, EPI_ISL_965021, EPI_ISL_965024, EPI_ISL_1132181, EPI_ISL_1132278-EPI_ISL_1132280, EPI_ISL_1191584, EPI_ISL_1218839, EPI_ISL_1238766, EPI_ISL_1239972, EPI_ISL_1239973, EPI_ISL_1250852, EPI_ISL_1372280, EPI_ISL_1372282).

Public SC2 data

Published genomes and associated metadata for all global A.2.5 isolates (n=220) were downloaded from GISAID (<https://www.gisaid.org/>) on 2021-03-29 (with “complete” and “low coverage excluded” checked). Thirty-three A.2.5 isolates were from Florida, including eighteen isolates sequenced at BPHL. Pangolin v2.3.6-pangolearn-2021-03-16 (<https://github.com/cov-lineages/pangolin>) and NextClade v0.14.1 (<https://clades.nextstrain.org/>) were run on all data to confirm lineage and variants as included in the GISAID sample metadata.

Phylogenetic and coalescent analysis

Full genome sequences were aligned with MAFFT v7.475 (23), and a maximum likelihood phylogeny was inferred using IQtree (24) with the following settings: iqtree -T AUTO -s aligned.fasta -m MFP -nt AUTO -B 1000. TreeTime was used to assess the temporal signal by performing a linear regression of the root-to-tip genetic distances against sampling dates (25). A coalescent analysis was carried out using BEAST v1.10.4 (26) with a strict molecular clock model, HKY nucleotide substitution model, and exponential growth coalescent model. Triplicate Markov chain Monte Carlo (MCMC) runs of 100 million states were computed, sampling every 10,000 steps. Convergence of MCMC chains was checked using Tracer v1.7.1 (27). A maximum clade credibility (MCC) tree was summarized from the posterior distribution of trees using TreeAnnotator with a 10% burn-in.

Spike protein structural characterization

The spike glycoprotein sequence from strain hCoV-19/USA/FL-BPHL-0057/2021 (MW586582; EPI_ISL_965017) was used to model the three-dimensional structure using SWISS-MODEL (<https://swissmodel.expasy.org/>) with template SMTL ID 7cn8.1, which was identified as the closest match to the A.2.5 target sequence (28). The structure was then visualized and annotated with PyMOL v2.4.2 (29).

Ethics Statement

This work has been reviewed by the Florida Department of Health Ethics and Human Research Protection Program and the Institutional Review Board determined that the ‘activity is public health practice and not research involving human subjects.’

Results

On March 29, 2021, the global A.2.5 lineage comprised 220 isolates with complete genomes from 13 countries (Figure 1A). The earliest collected A.2.5 clinical isolate submitted to GISAID was collected in Ecuador on December 1, 2020. Thirty-three A.2.5 isolates were from Florida, and the first clinical specimen in Florida was collected on January 16, 2021. Assessment of the S gene revealed that the most common spike protein mutations included S:D614G (98.64%), S:L452R (97.27%), S:G142- (97.27%), S:V143- (97.27%), S:L141- (95.45%), S:D215A (76.82%), and S:ins215AGY (76.82%). Samples from FL depicted similar mutations frequencies S:D614G (96.97%), S:L452R (96.97%), S:G142- (100%), S:V143- (100%), S:L141- (100%), S:D215A (87.88%), and S:ins215AGY (87.88%).

Introduction and continued community transmission of A.2.5 in Florida

A maximum likelihood phylogeny demonstrated that lineage A.2.5 is globally distributed, with dominant clades found in Central and South America as well as the United States and Italy (Figure 1B). The phylogeny also resolved a clade of 17 Florida isolates. The remaining isolates from Florida were interspersed throughout the phylogeny suggesting multiple importations of this emerging lineage.

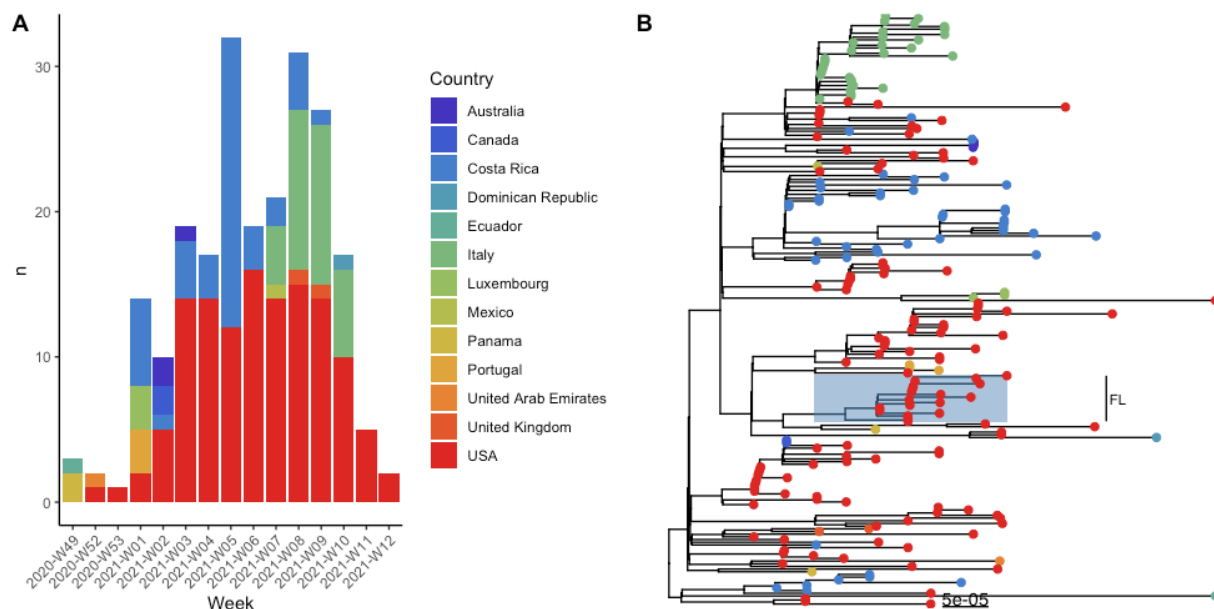


Figure 1. Time series of SARS-CoV-2 lineage A.2.5 isolates by collection date and country of isolation (A) and maximum likelihood phylogeny of 220 A.2.5 global isolates (B). Bars in (A) are colored by country of isolation and correspond to the tip point coloring in (B). The Florida clade, comprised of 17 isolates, is highlighted in light blue and annotated on the phylogeny.

To further investigate the emergence of lineage A.2.5, we performed a coalescent analysis. The maximum likelihood phylogeny (Figure 1B) was transformed into a time-scaled tree. It was then determined that sequence hCoV-19/Ecuador/USFQ-556/2020 was an outlier and was removed from the analysis. Assessment of temporal signal (i.e., molecular clock) indicated that the SARS-CoV-2 A.2.5 sequences evolved in a sufficient clock-like manner ($r=0.26$) (Figure 2A-B). Time-scaled analysis estimated the SARS-CoV-2 lineage A.2.5 evolutionary rate as $5.15E-4$ substitutions/site/year (95% HPD, $4.07E-4 - 6.23E-4$), consistent with the previous estimates (30).

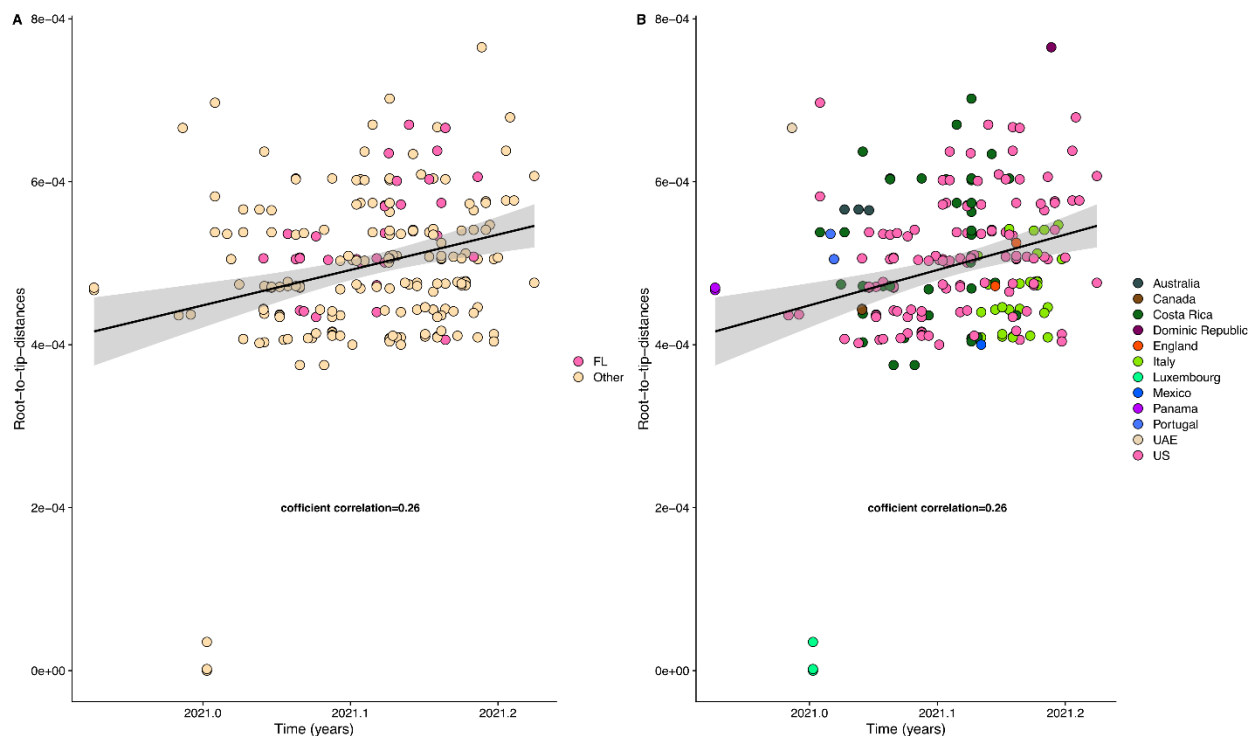


Figure 2. Temporal signal analysis of SARS-CoV-2 lineage A.2.5. For SARS-CoV-2, a temporal signal with correlation coefficient > 0.2 is generally accepted as sufficient temporal signal for coalescent analysis. The root-to-tip genetic distance is regressed on the collection date. Points are colored by U.S. or non-U.S. (A) or by country (B). Regression lines are shown with upper and lower error intervals (shaded grey area) representing 90% confidence intervals.

The most recent common ancestor (TMRCA) of the root ranged between late December 2019 and February 2020 (mean January 2020) (Figure 3). Strains from Luxembourg and one from the United States are located at the base of the main clade suggesting two independent and contemporaneous emergences of this lineage originated in the second half of 2020, when this lineage was first observed. The monophyletic clade comprising Florida strains originated in November 29, 2020 (95% HPD, October 24, 2020 – December 30, 2020); however, this early date was driven by two basal strains that may in fact represent a separate Florida introduction. Excluding those strains, the TMRCA of the clade is December 12, 2020 (95% HPD, November 27, 2020 – January 11, 2021). In addition to the dominant clade containing 17 strains, Florida isolates are interspersed throughout the maximum clade credibility (MCC) tree suggesting at least 8 separate introductions to the state (Figure 3).

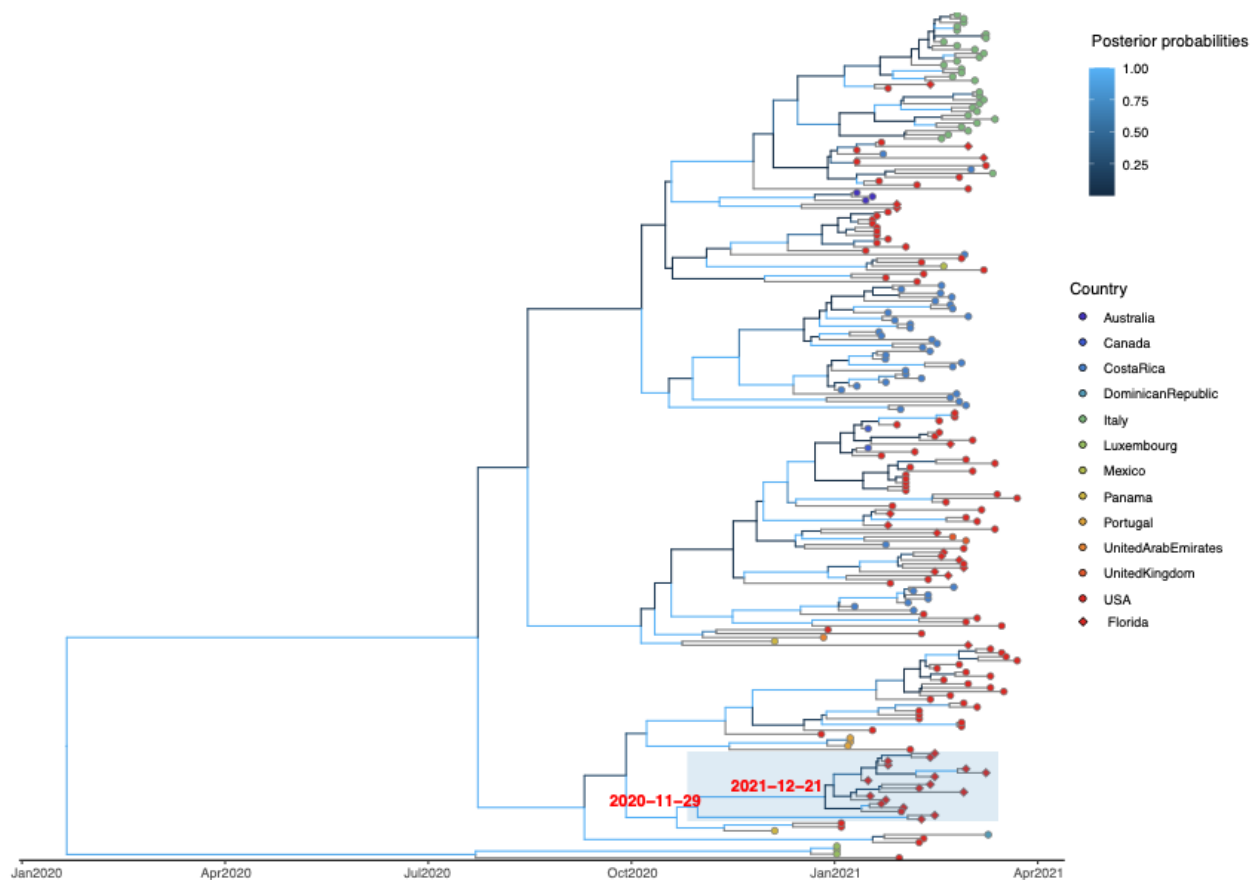


Figure 3. Maximum clade credibility tree of 219 SARS-CoV-2 lineage A.2.5 isolates. Branches are scaled in time and colored based on posterior probability. In general, a posterior probability above 0.8 is considered statistically significant. Tips are colored by country of isolation and isolates collected in Florida are represented by a diamond tip shape. The dominant Florida clade comprising 17 strains is highlighted, and the dates of the most recent common ancestor are labeled on the node.

Three-dimensional spike glycoprotein structure with 141-143del and ins215AGY

The primary Florida clade all possessed Spike L141del, G142del, V143del, D215A, ins215AGY, L452R, and D614G, although 3/17 isolates had missing and low coverage at Spike 215. The deletions of Spike 141-143 and the insertion at 215 were most notable; therefore, we further explored the location of these INDELS by modeling their location on the three-dimensional structure of the spike glycoprotein. This modeling revealed that the INDELS both occurred in the N-terminal domain (NTD) (Figure 4).

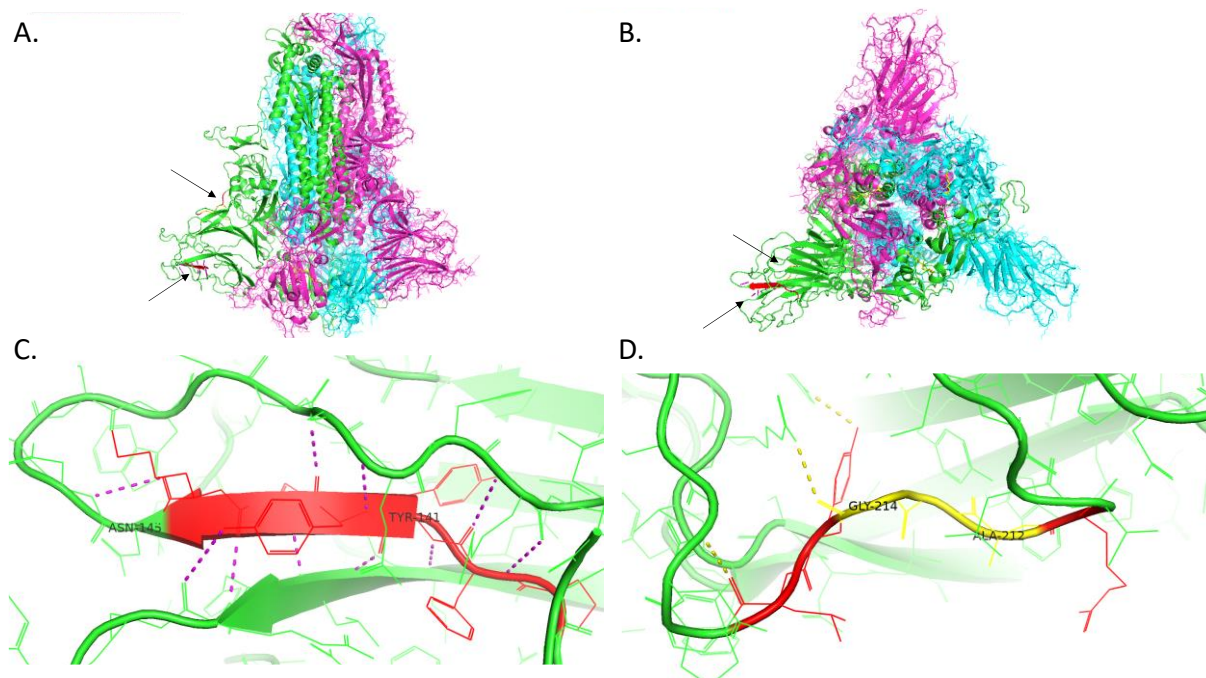


Figure 4. Three-dimensional structure of the SARS-CoV-2 spike glycoprotein illustrating the location of the A.2.5 INDELS 141-143 deletion and 215AGY insertion in the N-terminal domain. The structure is colored by domain and shown from the front view (A) and rotated to view the receptor binding site (B). The arrows point to the LGV deletion at Spike 141 and AGY insertion at 215, colored red to highlight their location in the NTD. The structural impact of the Spike 141-143 deletion and 215 insertion are shown in (C) and (D), respectively. Three flanking amino acids of the INDELS are colored in red, and insertions are colored yellow.

Discussion

Since late 2020, SARS-CoV-2 variants continue to cause concern in the United States and globally. Spike protein mutations of therapeutic concern continue to emerge independently in lineages not classified as VOI or VOC (10), thus emphasizing the importance of SC2 genomic surveillance to detect novel substitutions of therapeutic concern (SOTC) as they emerge. Here, we described the introduction and transmission of lineage A.2.5 in Florida, which was introduced into the state near the end of 2020 around the same time as other VOCs first emerged in the U.S.

The A.2.5 lineage first emerged in Central America and the U.S. (15), and molecular clock analysis estimates the emergence of TMRCA of the root of the lineage at the beginning of the pandemic, late December 2019 – February 2020, with an introduction into Florida a year later around December 2020 (Figure 3). Lineage A.2.5 subsequently expanded rapidly to other regions around the world. In January 2020, A.2.5 specimens associated with an outbreak among patients and staff at a healthcare facility in Florida were detected, and subsequently after, sequenced A.2.5 specimens collected across the state from separate geographical locations, suggesting separate introductions of A.2.5 in Florida around the same time period, as supported by the MCC phylogeny (Figure 3).

The A.2.5 lineage in Florida became of particular interest due to the presence of mutations in the spike protein, associated with VOCs, including convergent evolution of D614G, a defining mutation

among B.1 Pango lineages (31, 32), initially found in clades predominantly in Europe (33, 34). Spike D614G has become the dominant allele in isolates world-wide (34), and has been associated with increased viral loads (32, 34), infections among younger patients (32) and increased entry into human cells (35, 36), suggesting increased infectivity. A.2.5 also contains spike L452R, a CDC-defined SOTC (10), predominantly observed in Epsilon (B.1.427/B.1.429), which emerged in southern California in May 2020 and exhibits 20% increased transmissibility (4). Allele L452R has independently emerged in several other lineages over the last several months, including Iota (B.1.526), Kappa (B.1.617.1), Delta (B.1.617.2), and C.36 (10). Spike L452R causes increased infectivity (4) and has been reported to have a 15-fold reduction in susceptibility to combination monoclonal antibody therapy, bamlanivimab together with etesevimab (5).

Most notable among the Spike mutations in A.2.5 are two novel INDELS, a deletion of positions 141-143 and an insertion of AGY at 215. Both indels are located in the NTD of the spike protein (Figure 4), a site of importance in the host immune response. While the receptor binding domain (RBD) of the S protein has received much of the attention due to the phenotypic impact of ACE2 receptor binding, the NTD has recently emerged as significant in its role as a site for neutralizing antibodies (37-42). Recently, three studies identified an antigenic supersite in the NTD, which includes three of five loops on the NTD at amino acid residues 14-26, 141-156, and 246-260 (39, 40, 42, 43). Notably, the deletion of residues 141-143 in A.2.5 occurs in the NTD antigenic supersite and likely interferes with neutralizing antibody binding, although future studies would need to determine the exact phenotypic effects of this deletion.

Several variants have mutations in the NTD antigenic supersite, suggesting selective pressure on this region by emerging variants to escape NTD-specific neutralizing antibodies (39, 40, 42, 43). Additional mutations causing increased transmissibility are likely key factors in why variants, such as Alpha (B.1.1.7) and Delta (B.1.671.2), have significant case counts around the world and soon became the dominant variant in geographical areas, such as the U.S., India, and the U.K. shortly after they emerged (1, 11, 44, 45). While A.2.5 does not appear to demonstrate increased transmissibility based on the frequency of the lineage in the U.S. and globally, A.2.5 and its emerging sublineages should continue to be monitored as novel mutations could arise to increase transmissibility.

A.2.5 experienced rapid global expansion early during its emergence, however cases in Florida have been generally low to-date, especially in comparison to other variants (e.g., B.1.1.7, P.1, and B.1.617.2). Lineages with concerning or novel mutations in the NTD or RBD of spike must be further investigated and monitored to determine their phenotypic effects on transmissibility or therapeutics. Case counts and lineage proportions are only one factor when considering the effect of a particular variant on distinct populations within a community. As vaccination rates increase, restrictions continue to lift, and domestic and international travel increase, transmission dynamics will alter, and selective pressures may give rise to additional emerging variants or increase transmission frequencies of currently circulating variants. Continued baseline and targeted surveillance, in addition to contact tracing, are imperative to implement a strong public health response to reduce or eliminate transmission of SC2 concerning variants.

Acknowledgements

This analysis was funded in part through the Centers for Disease Control and Prevention's Office of Advanced Molecular Detection's support of the Epidemiology and Laboratory Capacity for Prevention and Control of Emerging Infectious Diseases Cooperative Agreement. We gratefully acknowledge the authors from the originating and submitting laboratories that provided sequences to GISAID's EpiCoV database that were used in this study as background global samples (Supplemental Table 1).

References

1. Davies NG, Abbott S, Barnard RC, Jarvis CI, Kucharski AJ, Munday JD, Pearson CAB, Russell TW, Tully DC, Washburne AD, Wenseleers T, Gimma A, Waites W, Wong KLM, van Zandvoort K, Silverman JD, Group CC-W, Consortium C-GU, Diaz-Ordaz K, Keogh R, Eggo RM, Funk S, Jit M, Atkins KE, Edmunds WJ. 2021. Estimated transmissibility and impact of SARS-CoV-2 lineage B.1.1.7 in England. *Science* 372.
2. Tegally H, Wilkinson E, Giovanetti M, Iranzadeh A, Fonseca V, Giandhari J, Doolabh D, Pillay S, San EJ, Msomi N, Mlisana K, von Gottberg A, Walaza S, Allam M, Ismail A, Mohale T, Glass AJ, Engelbrecht S, Van Zyl G, Preiser W, Petruccione F, Sigal A, Hardie D, Marais G, Hsiao NY, Korsman S, Davies MA, Tyers L, Mudau I, York D, Maslo C, Goedhals D, Abrahams S, Laguda-Akingba O, Alisoltani-Dehkordi A, Godzik A, Wibmer CK, Sewell BT, Lourenco J, Alcantara LCJ, Kosakovsky Pond SL, Weaver S, Martin D, Lessells RJ, Bhiman JN, Williamson C, de Oliveira T. 2021. Detection of a SARS-CoV-2 variant of concern in South Africa. *Nature* 592:438-443.
3. Faria NR, Mellan TA, Whittaker C, Claro IM, Candido DDS, Mishra S, Crispim MAE, Sales FCS, Hawryluk I, McCrone JT, Hulswit RJG, Franco LAM, Ramundo MS, de Jesus JG, Andrade PS, Coletti TM, Ferreira GM, Silva CAM, Manuli ER, Pereira RHM, Peixoto PS, Kraemer MUG, Gaburo N, Jr., Camilo CDC, Hoeltgebaum H, Souza WM, Rocha EC, de Souza LM, de Pinho MC, Araujo LJ, Malta FSV, de Lima AB, Silva JDP, Zauli DAG, Ferreira ACS, Schnekenberg RP, Laydon DJ, Walker PGT, Schluter HM, Dos Santos ALP, Vidal MS, Del Caro VS, Filho RMF, Dos Santos HM, Aguiar RS, Proenca-Modena JL, Nelson B, Hay JA, Monod M, Miscouridou X, et al. 2021. Genomics and epidemiology of the P.1 SARS-CoV-2 lineage in Manaus, Brazil. *Science* 372:815-821.
4. Deng X, Garcia-Knight MA, Khalid MM, Servellita V, Wang C, Morris MK, Sotomayor-Gonzalez A, Glasner DR, Reyes KR, Gliwa AS, Reddy NP, Sanchez San Martin C, Federman S, Cheng J, Balcerek J, Taylor J, Streithorst JA, Miller S, Sreekumar B, Chen PY, Schulze-Gahmen U, Taha TY, Hayashi JM, Simoneau CR, Kumar GR, McMahan S, Lidsky PV, Xiao Y, Hemarajata P, Green NM, Espinosa A, Kath C, Haw M, Bell J, Hacker JK, Hanson C, Wadford DA, Anaya C, Ferguson D, Frankino PA, Shivram H, Lareau LF, Wyman SK, Ott M, Andino R, Chiu CY. 2021. Transmission, infectivity, and neutralization of a spike L452R SARS-CoV-2 variant. *Cell* doi:10.1016/j.cell.2021.04.025.
5. Company ELA. 2021. Fact Sheet for Health Care Providers Emergency Use Authorization (EUA) of Bamlanivimab and Etesevimab.
6. Wang P, Nair MS, Liu L, Iketani S, Luo Y, Guo Y, Wang M, Yu J, Zhang B, Kwong PD, Graham BS, Mascola JR, Chang JY, Yin MT, Sobieszczyk M, Kyratsous CA, Shapiro L, Sheng Z, Huang Y, Ho DD. 2021. Antibody resistance of SARS-CoV-2 variants B.1.351 and B.1.1.7. *Nature* 593:130-135.
7. Wang P, Casner RG, Nair MS, Wang M, Yu J, Cerutti G, Liu L, Kwong PD, Huang Y, Shapiro L, Ho DD. 2021. Increased resistance of SARS-CoV-2 variant P.1 to antibody neutralization. *Cell Host Microbe* 29:747-751 e4.
8. Wu K, Werner AP, Moliva JI, Koch M, Choi A, Stewart-Jones GBE, Bennett H, Boyoglu-Barnum S, Shi W, Graham BS, Carfi A, Corbett KS, Seder RA, Edwards DK. 2021. mRNA-1273 vaccine induces neutralizing antibodies against spike mutants from global SARS-CoV-2 variants. *bioRxiv* doi:10.1101/2021.01.25.427948.
9. Madhi SA, Baillie V, Cutland CL, Voysey M, Koen AL, Fairlie L, Padayachee SD, Dheda K, Barnabas SL, Bhorat QE, Briner C, Kwatra G, Ahmed K, Aley P, Bhikha S, Bhiman JN, Bhorat AE, du Plessis J, Esmail A, Groenewald M, Horne E, Hwa SH, Jose A, Lambe T, Laubscher M, Malahleha M, Masenya M, Masilela M, McKenzie S, Molapo K, Moultrie A, Oelofse S, Patel F, Pillay S, Rhead S, Rodel H, Rossouw L, Taoushanis C, Tegally H, Thombrayil A, van Eck S, Wibmer CK, Durham NM,

- Kelly EJ, Villafana TL, Gilbert S, Pollard AJ, de Oliveira T, Moore PL, Sigal A, et al. 2021. Efficacy of the ChAdOx1 nCoV-19 Covid-19 Vaccine against the B.1.351 Variant. *N Engl J Med* 384:1885-1898.
10. Centers for Disease Control and Prevention NCflaRDN, Division of Viral Diseases. 2021. SARS-CoV-2 Variant Classifications and Definitions, *on* Centers for Disease Control and Prevention. <https://www.cdc.gov/coronavirus/2019-ncov/variants/variant-info.html>. Accessed 2021-06-21.
 11. Prevention CfDca. 2021. Variant Proportions. <https://covid.cdc.gov/covid-data-tracker/#variant-proportions>. Accessed 2021-06-04.
 12. Organization WH. 2021. Tracking SARS-CoV-2 variants. <https://www.who.int/en/activities/tracking-SARS-CoV-2-variants/>. Accessed 2021-06-04.
 13. Banchich A, O'Toole A. 2021. Pango Lineages. <https://cov-lineages.org/>. Accessed 2021-06-07.
 14. Banchich A, O'Toole A. 2021. Pango Lineages - Lineage A.2.4. https://cov-lineages.org/lineages/lineage_A.2.4.html. Accessed 2021-06-07.
 15. Banchich A, O'Toole A. 2021. Pango Lineages - Lineage A.2.5. https://cov-lineages.org/lineages/lineage_A.2.5.html. Accessed 2021-06-07.
 16. Blanton J. 2021. BPHL SARS-CoV-2 Tiled Amplicon Illumina Sequencing. <https://www.protocols.io/view/bphl-sars-cov-2-tiled-amplicon-illumina-sequencing-by3tpynn>. Accessed 2021-11-18.
 17. Bolger AM, Lohse M, Usadel B. 2014. Trimmomatic: a flexible trimmer for Illumina sequence data. *Bioinformatics* 30:2114-20.
 18. Li H. 2013. Aligning sequence reads, clone sequences and assembly contigs with BWA-MEM. arXiv 1303.3997v2.
 19. Li H, Handsaker B, Wysoker A, Fennell T, Ruan J, Homer N, Marth G, Abecasis G, Durbin R, Genome Project Data Processing S. 2009. The Sequence Alignment/Map format and SAMtools. *Bioinformatics* 25:2078-9.
 20. Grubaugh ND, Gangavarapu K, Quick J, Matteson NL, De Jesus JG, Main BJ, Tan AL, Paul LM, Brackney DE, Grewal S, Gurfield N, Van Rompay KKA, Isern S, Michael SF, Coffey LL, Loman NJ, Andersen KG. 2019. An amplicon-based sequencing framework for accurately measuring intrahost virus diversity using PrimalSeq and iVar. *Genome Biol* 20:8.
 21. Coordinators NR. 2017. Database resources of the National Center for Biotechnology Information. *Nucleic Acids Research* 46:D8-D13.
 22. Rambaut A, Holmes EC, O'Toole A, Hill V, McCrone JT, Ruis C, du Plessis L, Pybus OG. 2020. A dynamic nomenclature proposal for SARS-CoV-2 lineages to assist genomic epidemiology. *Nat Microbiol* 5:1403-1407.
 23. Nakamura T, Yamada KD, Tomii K, Katoh K. 2018. Parallelization of MAFFT for large-scale multiple sequence alignments. *Bioinformatics* 34:2490-2492.
 24. Nguyen L-T, Schmidt HA, von Haeseler A, Minh BQ. 2014. IQ-TREE: A Fast and Effective Stochastic Algorithm for Estimating Maximum-Likelihood Phylogenies. *Molecular Biology and Evolution* 32:268-274.
 25. Sagulenko P, Puller V, Neher RA. 2018. TreeTime: Maximum-likelihood phylodynamic analysis. *Virus Evol* 4:vex042.
 26. Suchard MA, Lemey P, Baele G, Ayres DL, Drummond AJ, Rambaut A. 2018. Bayesian phylogenetic and phylodynamic data integration using BEAST 1.10. *Virus Evolution* 4.
 27. Rambaut A, Drummond AJ, Xie D, Baele G, Suchard MA. 2018. Posterior Summarization in Bayesian Phylogenetics Using Tracer 1.7. *Systematic Biology* 67:901-904.
 28. Zhang S, Qiao S, Yu J, Zeng J, Shan S, Tian L, Lan J, Zhang L, Wang X. 2021. Bat and pangolin coronavirus spike glycoprotein structures provide insights into SARS-CoV-2 evolution. *Nat Commun* 12:1607.

29. DeLano WL. 2002. PyMOL: An open-source molecular graphics tool. *CCP4 Newsletter on Protein Crystallography* 40:82-92.
30. Rambaut A. 2020. Phylodynamic Analysis | 176 genomes | 6 Mar 2020, 2021-04-07 ed, [Virological.org](https://virological.org).
31. Alm E, Broberg EK, Connor T, Hodcroft EB, Komissarov AB, Maurer-Stroh S, Melidou A, Neher RA, O'Toole A, Pereyaslov D, laboratories WHOERs, group GE, laboratories WHOERs, group* GE. 2020. Geographical and temporal distribution of SARS-CoV-2 clades in the WHO European Region, January to June 2020. *Euro Surveill* 25.
32. Volz E, Hill V, McCrone JT, Price A, Jorgensen D, O'Toole A, Southgate J, Johnson R, Jackson B, Nascimento FF, Rey SM, Nicholls SM, Colquhoun RM, da Silva Filipe A, Shepherd J, Pascall DJ, Shah R, Jesudason N, Li K, Jarrett R, Pacchiarini N, Bull M, Geidelberg L, Siveroni I, Consortium C-U, Goodfellow I, Loman NJ, Pybus OG, Robertson DL, Thomson EC, Rambaut A, Connor TR. 2021. Evaluating the Effects of SARS-CoV-2 Spike Mutation D614G on Transmissibility and Pathogenicity. *Cell* 184:64-75 e11.
33. Isabel S, Grana-Miraglia L, Gutierrez JM, Bundalovic-Torma C, Groves HE, Isabel MR, Eshaghi A, Patel SN, Gubbay JB, Poutanen T, Guttman DS, Poutanen SM. 2020. Evolutionary and structural analyses of SARS-CoV-2 D614G spike protein mutation now documented worldwide. *Sci Rep* 10:14031.
34. Korber B, Fischer WM, Gnanakaran S, Yoon H, Theiler J, Abfalterer W, Hengartner N, Giorgi EE, Bhattacharya T, Foley B, Hastie KM, Parker MD, Partridge DG, Evans CM, Freeman TM, de Silva TI, Sheffield C-GG, McDanal C, Perez LG, Tang H, Moon-Walker A, Whelan SP, LaBranche CC, Saphire EO, Montefiori DC. 2020. Tracking Changes in SARS-CoV-2 Spike: Evidence that D614G Increases Infectivity of the COVID-19 Virus. *Cell* 182:812-827 e19.
35. Daniloski Z, Jordan TX, Ilmain JK, Guo X, Bhabha G, tenOever BR, Sanjana NE. 2021. The Spike D614G mutation increases SARS-CoV-2 infection of multiple human cell types. *Elife* 10.
36. Zhang L, Jackson CB, Mou H, Ojha A, Peng H, Quinlan BD, Rangarajan ES, Pan A, Vanderheiden A, Suthar MS, Li W, Izzard T, Rader C, Farzan M, Choe H. 2020. SARS-CoV-2 spike-protein D614G mutation increases virion spike density and infectivity. *Nat Commun* 11:6013.
37. Rosa A, Pye VE, Graham C, Muir L, Seow J, Ng KW, Cook NJ, Rees-Spear C, Parker E, Dos Santos MS, Rosadas C, Susana A, Rhys H, Nans A, Masino L, Roustan C, Christodoulou E, Ulferts R, Wrobel A, Short CE, Fertleman M, Sanders RW, Heaney J, Spyer M, Kjaer S, Riddell A, Malim MH, Beale R, MacRae JI, Taylor GP, Nastouli E, van Gils MJ, Rosenthal PB, Pizzato M, McClure MO, Tedder RS, Kassiotis G, McCoy LE, Doores KJ, Cherepanov P. 2021. SARS-CoV-2 recruits a haem metabolite to evade antibody immunity. *medRxiv* doi:10.1101/2021.01.21.21249203.
38. Andreano E, Piccini G, Licastro D, Casalino L, Johnson NV, Paciello I, Monego SD, Pantano E, Manganaro N, Manenti A, Manna R, Casa E, Hyseni I, Benincasa L, Montomoli E, Amaro RE, McLellan JS, Rappuoli R. 2020. SARS-CoV-2 escape in vitro from a highly neutralizing COVID-19 convalescent plasma. *bioRxiv* doi:10.1101/2020.12.28.424451.
39. McCallum M, De Marco A, Lempp FA, Tortorici MA, Pinto D, Walls AC, Beltramello M, Chen A, Liu Z, Zatta F, Zepeda S, di Iulio J, Bowen JE, Montiel-Ruiz M, Zhou J, Rosen LE, Bianchi S, Guarino B, Fregni CS, Abdelnabi R, Foo SC, Rothlauf PW, Bloyet LM, Benigni F, Camerini E, Neyts J, Riva A, Snell G, Telenti A, Whelan SPJ, Virgin HW, Corti D, Pizzuto MS, Veesler D. 2021. N-terminal domain antigenic mapping reveals a site of vulnerability for SARS-CoV-2. *Cell* 184:2332-2347 e16.
40. Suryadevara N, Shrihari S, Gilchuk P, VanBlargan LA, Binshtein E, Zost SJ, Nargi RS, Sutton RE, Winkler ES, Chen EC, Fouch ME, Davidson E, Doranz BJ, Chen RE, Shi PY, Carnahan RH, Thackray LB, Diamond MS, Crowe JE, Jr. 2021. Neutralizing and protective human monoclonal antibodies recognizing the N-terminal domain of the SARS-CoV-2 spike protein. *Cell* 184:2316-2331 e15.

41. Chi X, Yan R, Zhang J, Zhang G, Zhang Y, Hao M, Zhang Z, Fan P, Dong Y, Yang Y, Chen Z, Guo Y, Zhang J, Li Y, Song X, Chen Y, Xia L, Fu L, Hou L, Xu J, Yu C, Li J, Zhou Q, Chen W. 2020. A neutralizing human antibody binds to the N-terminal domain of the Spike protein of SARS-CoV-2. *Science* 369:650-655.
42. Cerutti G, Guo Y, Zhou T, Gorman J, Lee M, Rapp M, Reddem ER, Yu J, Bahna F, Bimela J, Huang Y, Katsamba PS, Liu L, Nair MS, Rawi R, Olia AS, Wang P, Zhang B, Chuang GY, Ho DD, Sheng Z, Kwong PD, Shapiro L. 2021. Potent SARS-CoV-2 neutralizing antibodies directed against spike N-terminal domain target a single supersite. *Cell Host Microbe* 29:819-833 e7.
43. Lok SM. 2021. An NTD supersite of attack. *Cell Host Microbe* 29:744-746.
44. Allen H, Vusirikala A, Flannagan J, Twohig KA, Zaidi A, Consortium C-U, Groves N, Lopez-Bernal J, Harris R, Charlett A, Dabrera G, Kall M. 2021. Increased household transmission of COVID-19 cases associated with SARS-CoV-2 Variant of Concern B.1.617.2: a national case-control study. *Public Health England*.
45. Singh J, Rahman SA, Ehtesham NZ, Hira S, Hasnain SE. 2021. SARS-CoV-2 variants of concern are emerging in India. *Nat Med* doi:10.1038/s41591-021-01397-4.

Supplemental Table 1. GISAID EpiCov Acknowledgments Table.

Accession	Originating Laboratory	Submitting Laboratory	Authors
EPI_ISL_1015800,EPI_ISL_1015827,EPI_ISL_1015831,EPI_ISL_1015865,EPI_ISL_1015869,EPI_ISL_1015901,EPI_ISL_1015911,EPI_ISL_1049680,EPI_ISL_912146,EPI_ISL_962351	Altius Institute for Biomedical Sciences	Seattle Flu Study	Deborah A. Nickerson, Chris D. Frazar, Jover Lee, Benjamin Pelle, Erica Ryke, Matthew Richardson, Amanda Adler, Elisabeth Brandstetter, Peter D. Han, Kairsten Fay, Misja Ilcisin, Kirsten Lacombe, Thomas R. Sibley, Melissa Truong, Caitlin R. Wolf, Ryan Alexander, Daniel Bates, Rebecca Bruders, Stephanie DeBaun, Clem Green, Muhammad Halimun, Jessica Halow, Kneshay Harper, Matt Hartman,

			<p>Andrew Meuser, Alex Nguyen, Truong Nguyen, Sofia Olsson, Sadie Patraw, Hannah Petersen, Tobias Ragoczy, Joshua Richards, Jacob Rodriguez, John Stamatoyannopoulos, Julia Wald, Olivia Waltner, Michael Boeckh, Janet A. Englund, Michael Famulare, Barry R. Lutz, Mark J. Rieder, Lea M. Starita, Matthew Thompson, Helen Y. Chu, Jay Shendure, Trevor Bedford</p>
EPI_ISL_1379402	AREA DE SALUD CATEDRAL NORESTE	<p>Inciensa, Instituto Costarricense de Investigaci3n y Ense±anza en Nutrici3n y Salud</p>	<p>Francisco Duarte, Hebleen Porras, Claudio Soto-Garita, Estela Cordero, Adriana God±nez & Melany Calder3n</p>
EPI_ISL_1067598	AREA DE SALUD CATEDRAL NORESTE	<p>Inciensa, Instituto Costarricense de Investigaci3n y Ense±anza en Nutrici3n y Salud</p>	<p>Francisco Duarte, Hebleen Porras, Claudio Soto-Garita, Estela Cordero, Adriana God±nez, Melany Calder3n & Mariel L3pez</p>

EPI_ISL_1196438	AREA DE SALUD CORRALILLO	Inciensa, Instituto Costarricense de Investigación y Enseñanza en Nutrición y Salud	Francisco Duarte, Hebleen Porras, Claudio Soto-Garita, Estela Cordero, Adriana Godínez, Melany Calderón & Mónica Charpentier-Artavia
EPI_ISL_1196421,EPI_ISL_1196422,EPI_ISL_1379433	AREA DE SALUD CORREDORES	Inciensa, Instituto Costarricense de Investigación y Enseñanza en Nutrición y Salud	Francisco Duarte, Hebleen Porras, Claudio Soto-Garita, Estela Cordero, Adriana Godínez, Melany Calderón & Mariel López
EPI_ISL_1379394,EPI_ISL_1379395	AREA DE SALUD CORREDORES	Inciensa, Instituto Costarricense de Investigación y Enseñanza en Nutrición y Salud	Francisco Duarte, Hebleen Porras, Claudio Soto-Garita, Estela Cordero, Adriana Godínez & Melany Calderón
EPI_ISL_1379396	AREA DE SALUD CURRIDABAT 2	Inciensa, Instituto Costarricense de Investigación y Enseñanza en Nutrición y Salud	Francisco Duarte, Hebleen Porras, Claudio Soto-Garita, Estela Cordero, Adriana Godínez, Melany Calderón & Mariel López
EPI_ISL_1067597	AREA DE SALUD DESAMPARADOS 1 - CLINICA DR. MARCIAL FALLAS	Inciensa, Instituto Costarricense de Investigación y Enseñanza en Nutrición y Salud	Francisco Duarte, Hebleen Porras, Claudio Soto-Garita, Estela Cordero, Adriana Godínez, Melany

			CalderÃ³n & Mariel LÃ³pez
EPI_ISL_1379416	AREA DE SALUD GOICOECH EA 2 - CLINICA DR. JIMENEZ NUÃEZ	Inciensa, Instituto Costarricense de InvestigaciÃ³n y EnseÃ±anza en NutriciÃ³n y Salud	Francisco Duarte, Hebleen Porras, Claudio Soto-Garita, Estela Cordero, Adriana GodÃnez & Melany CalderÃ³n
EPI_ISL_1067591	AREA DE SALUD GOICOECH EA 2 - CLINICA DR. JIMENEZ NUÃEZ	Inciensa, Instituto Costarricense de InvestigaciÃ³n y EnseÃ±anza en NutriciÃ³n y Salud	Francisco Duarte, Hebleen Porras, Claudio Soto-Garita, Estela Cordero, Adriana GodÃnez, Melany CalderÃ³n & Mariel LÃ³pez
EPI_ISL_1379423	AREA DE SALUD MORAVIA	Inciensa, Instituto Costarricense de InvestigaciÃ³n y EnseÃ±anza en NutriciÃ³n y Salud	Francisco Duarte, Hebleen Porras, Claudio Soto-Garita, Estela Cordero, Adriana GodÃnez & Melany CalderÃ³n
EPI_ISL_1379398	AREA DE SALUD MORAVIA	Inciensa, Instituto Costarricense de InvestigaciÃ³n y EnseÃ±anza en NutriciÃ³n y Salud	Francisco Duarte, Hebleen Porras, Claudio Soto-Garita, Estela Cordero, Adriana GodÃnez, Melany CalderÃ³n & Mariel LÃ³pez
EPI_ISL_1067602	AREA DE SALUD OSA	Inciensa, Instituto Costarricense de InvestigaciÃ³n y EnseÃ±anza en	Francisco Duarte, Hebleen Porras, Claudio Soto-Garita, Estela Cordero, Adriana

		Nutrici3n y Salud	God3nez, Melany Calder3n & Mariel L3pez
EPI_ISL_1379425	AREA DE SALUD PARAISO-CERVANTES	Inciensa, Instituto Costarricense de Investigaci3n y Ense3anza en Nutrici3n y Salud	Francisco Duarte, Hebleen Porras, Claudio Soto-Garita, Estela Cordero, Adriana God3nez, Melany Calder3n & M3nica Charpentier-Artavia
EPI_ISL_1379415	AREA DE SALUD PAVAS (COOPESALUD)	Inciensa, Instituto Costarricense de Investigaci3n y Ense3anza en Nutrici3n y Salud	Francisco Duarte, Hebleen Porras, Claudio Soto-Garita, Estela Cordero, Adriana God3nez & Melany Calder3n
EPI_ISL_1379400	AREA DE SALUD SAN JUAN-SAN DIEGO-CONCEPCION 2	Inciensa, Instituto Costarricense de Investigaci3n y Ense3anza en Nutrici3n y Salud	Francisco Duarte, Hebleen Porras, Claudio Soto-Garita, Estela Cordero, Adriana God3nez & Melany Calder3n
EPI_ISL_1067601	AREA DE SALUD SAN JUAN-SAN DIEGO-CONCEPCION 2	Inciensa, Instituto Costarricense de Investigaci3n y Ense3anza en Nutrici3n y Salud	Francisco Duarte, Hebleen Porras, Claudio Soto-Garita, Estela Cordero, Adriana God3nez, Melany Calder3n, Caterina Guzm3n, Nazareth Ruiz & Mariel L3pez

EPI_ISL_1067599	AREA DE SALUD TURRIALBA-JIMENEZ	Inciensa, Instituto Costarricense de Investigación y Enseñanza en Nutrición y Salud	Francisco Duarte, Hebleen Porras, Claudio Soto-Garita, Estela Cordero, Adriana Godínez, Melany Calderón & Mónica Charpentier-Artavia
EPI_ISL_1334582	Arizona State Public Health Laboratory	Arizona State Public Health Laboratory	Trung Huynh, Jessica Escobar, Katherine Fullerton, Nobuko Fukushima, Stacy White, Linda Getsinger, Victor Waddell
EPI_ISL_1298501,EPI_ISL_1298509,EPI_ISL_1298549,EPI_ISL_1298673,EPI_ISL_1298728,EPI_ISL_1298778,EPI_ISL_1298781,EPI_ISL_1299188,EPI_ISL_1299189,EPI_ISL_1167318,EPI_ISL_1167337,EPI_ISL_1167374,EPI_ISL_1167535,EPI_ISL_1167536,EPI_ISL_1169094,EPI_ISL_1169099,EPI_ISL_1169110,EPI_ISL_1169191,EPI_ISL_1169455,EPI_ISL_1359611,EPI_ISL_1359617,EPI_ISL_1359667,EPI_ISL_1359676	ASL Napoli 1 Centro	AMES Centro Polidiagnostico Strumentale S.r.l.	Giovanni Savarese, Raffaella Ruggiero, Eloisa Evangelista, Antonella Di Carlo, Luisa Circelli, Luigi D'Amore, Nadia Petrillo, Monica Ianniello, Roberto Sirica, Maurizio D'Amora, Antonio Fico
EPI_ISL_1096365,EPI_ISL_1096477,EPI_ISL_1096762,EPI_ISL_1096812,EPI_ISL_1096963	ASL Napoli 1 Centro	AMES Centro Polidiagnostico Strumentale S.r.l.	Giovanni Savarese, Raffaella Ruggiero, Eloisa Evangelista, Antonella Di Carlo, Luisa Circelli, Luigi D'Amore, Roberto Sirica, Antonio Fico

EPI_ISL_1229623,EPI_ISL_1229680	ASL Napoli 1 Centro	AMES Centro Polidiagnostico Strumentale S.r.l.	Giovanni Savarese, Raffaella Ruggiero, Eloisa Evangelista, Antonella Di Carlo, Luisa Circelli, Luigi D'Amore, Roberto Sirica, Nadia Petrillo, Monica Ianniello, Maurizio D'Amora, Antonio Fico
EPI_ISL_860057	BTC, Khalifa University	BTC, Khalifa University	Al Safar et al
EPI_ISL_1279275	Centro de Investigaci3n Biom3dica del Noreste (CIBIN)	Instituto Nacional de Enfermedades Respiratorias (INER): Centro de Investigaci3n en Enfermedades Infecciosas (CIENI)	Consortio Mexicano de Vigilancia Gen3mica (CoViGen-Mex). Authors (in alphabetical order):
EPI_ISL_1164243,EPI_ISL_1164271,EPI_ISL_1164278	Centro Hospitalar de Entre o Douro e Vouga (CHEDV)	Institute of Biomedicine (IBiMED), Universidade de Aveiro	Gabriela Moura, Sofia Marques, Patricia Arinto, Miguel Pinheiro and Manuel Santos
EPI_ISL_1379404	CLINICA BIBLICA	Incienza, Instituto Costarricense de Investigaci3n y Ense3anza en Nutrici3n y Salud	Francisco Duarte, Hebleen Porras, Claudio Soto-Garita, Estela Cordero, Adriana God3nez, Melany Calder3n & Karla Guti3rrez-Gonz3lez
EPI_ISL_1097580	Colorado Department of Public Health and Environment	Colorado Department of Public Health and Environment	Laura Bankers, Molly C. Hetherington-Rauth, Diana Ir, Shannon Ely,

			Shannon R. Matzinger, Sarah Elizabeth Totten, Emily A. Travanty
EPI_ISL_1226674	Columbia University Irving Medical Center	Wadsworth Center, New York State Department of Health	Kirsten St. George, Daryl M. Lamson, Alexis Russel, Matthew Shudt, Melissa A Leisner, Jonathan Plitnick, Navjot Singh, John Kelly, Erasmus Schneider, Erica Lasek-Nesselquist
EPI_ISL_1093729,EPI_ISL_1318963	DeRisi Lab, University of California, San Francisco	DeRisi Lab, University of California, San Francisco	Sabrina Mann, Anthea Mitchell, Jamin Liu, Sara Sunshine, Matthew Laurie, Genay Pilarowski, Amy Kistler, Manu Vanaerschot, Patrick Ayscue, Lucy Li, Eric Chow, IDseq Team, James Peng, Carina Marquez, Luis Rubio, Gabriel Chamie, Diane Jones, Jon Jacobo, Susana Rojas, Susy Rojas, Valerie Tulier-Laiwa, Douglas Black, Jackie Martinez, Maya Petersen, Diane Havlir, and Joseph DeRisi
EPI_ISL_937208	DOHMH Corona	New York City Public	Jade Wang, et al.

		Health Laboratory	
EPI_ISL_1018009,EPI_ISL_1200557,EPI_ISL_1337481,EPI_ISL_857159	DOHMH Morrisania	New York City Public Health Laboratory	Jade Wang, et al.
EPI_ISL_1132181,EPI_ISL_1132278,EPI_ISL_1132279,EPI_ISL_1132280,EPI_ISL_1191584,EPI_ISL_1218839,EPI_ISL_1238766,EPI_ISL_1239972,EPI_ISL_1239973,EPI_ISL_1250852,EPI_ISL_1372280,EPI_ISL_1372282,EPI_ISL_965016,EPI_ISL_965017,EPI_ISL_965018,EPI_ISL_965019,EPI_ISL_965021,EPI_ISL_965024	Florida Bureau of Public Health Laboratories	Florida Bureau of Public Health Laboratories	Sarah Schmedes, Jason Blanton
EPI_ISL_1011056,EPI_ISL_1231521,EPI_ISL_1231810,EPI_ISL_1231888	Fulgent Genetics	Fulgent Genetics	Harry Gao, Mickey Li, John Gao, Joseph Fierro, Benafsh Sapra, Becky Tsai, Yan Meng, Doreen Ng, James Xie
EPI_ISL_1001458	Gorgas memorial Institute for Health Studies	Gorgas memorial Institute for Health Studies	DÁaz Y, Castillo D, Moreno B, Castillo M,González C, Gondola J, Moreno A, Pitti Y, Chavarria O, Franco D, Saenz L, Gaitan M, Arauz D, Martinez AA, Lopez-Verges S.
EPI_ISL_1225583	Gorgas Memorial Laboratory of Health Studies	Gorgas Memorial Laboratory of Health Studies	Yamilka Diaz, Anyuri Ortiz, Adriana Weeden, Daniel Castillo, Claudia Gonzalez, Brechla Moreno, Mabel Martinez-Montero, Marlene Castillo, Gretel Vasquez, Liseth Saenz, Danilo Franco, Yaneth Pitti, Oris

			<p>Chavarria, Jessica Gondola, Ambar Moreno, Layda Abrego, Davis Beltran, Ilka Guerra, Jim Chang, Zumara Chaverra, Isela Guerrero, Alejandra Valoy, Melissa Gaitan, Dimelza Arauz, Maria Chen- German, Elimelec Valdespino, Rita Rodriguez, Rita Corrales, Juan Miguel Pascale, Alexander Martinez, Sandra Lopez- Verges</p>
<p>EPI_ISL_1088894</p>	<p>Helix / Illumina</p>	<p>Respiratory Viruses Branch, Division of Viral Diseases, Centers for Disease Control and Prevention</p>	<p>Peter W. Cook, Dakota Howard, Dhwani Batra, Ben L. Rambo- Martin, Eileen de Feo, Jan Antico, Christine Tran, Matthew Tolentino, Shannon Wickline, Kim Gietzen, Brad Sickler, Jingtao Liu, Eric Allen, Phil Febbo, Summer Galloway, Nicole L. Washington, Simon White, Geraint Levan, Kelly Schiabor</p>

			<p>Barrett, Elizabeth Cirulli, Alexandre Bolze, Ary Ascencio, Charlotte Rivera- Garcia, Ryan Cho, Jason Nguyen, Sherry Wang, Jimmy Ramirez, Tyler Cassens, Efren Sandoval, Magnus Isaksson, William Lee, David Becker, Marc Laurent, James Lu, Clinton R. Paden, Suxiang Tong, Duncan MacCannell</p>
<p>EPI_ISL_1261895,EPI_ISL_1268160,EPI_ISL_1268439,EPI_ISL_1268583,EPI_ISL_1269585,EPI_ISL_1270128,EPI_ISL_1270377,EPI_ISL_1283481,EPI_ISL_1283486,EPI_ISL_1283564,EPI_ISL_1298030,EPI_ISL_1298038,EPI_ISL_1133828</p>	<p>Helix/Illumina</p>	<p>Centers for Disease Control and Prevention Division of Viral Diseases, Pathogen Discovery</p>	<p>Peter W. Cook, Dakota Howard, Dhvani Batra, Ben L. Rambo-Martin, Eileen de Feo, Jan Antico, Christine Tran, Matthew Tolentino, Shannon Wickline, Kim Gietzen, Brad Sickler, Jingtao Liu, Eric Allen, Phil Febbo, Summer Galloway, Nicole L. Washington, Simon White, Geraint Levan, Kelly Schiabor Barrett, Elizabeth Cirulli, Alexandre</p>

			Bolze, Ary Ascencio, Charlotte Rivera- Garcia, Ryan Cho, Jason Nguyen, Sherry Wang, Jimmy Ramirez, Tyler Cassens, Efren Sandoval, Magnus Isaksson, William Lee, David Becker, Marc Laurent, James Lu, Clinton R. Paden, Suxiang Tong, Duncan MacCannell
EPI_ISL_1379392	HOSPITAL CIUDAD NEILY	Inciensa, Instituto Costarricen se de Investigaci3n y Ense±anza en Nutrici3n y Salud	Francisco Duarte, Hebleen Porras, Claudio Soto-Garita, Estela Cordero, Adriana God±nez & Melany Calder3n
EPI_ISL_1379432, EPI_ISL_1379434	HOSPITAL CIUDAD NEILY	Inciensa, Instituto Costarricen se de Investigaci3n y Ense±anza en Nutrici3n y Salud	Francisco Duarte, Hebleen Porras, Claudio Soto-Garita, Estela Cordero, Adriana God±nez, Melany Calder3n & Mariel L3pez
EPI_ISL_1379430	HOSPITAL DR. CARLOS LUIS VALVERDE VEGA	Inciensa, Instituto Costarricen se de Investigaci3n y Ense±anza en Nutrici3n y Salud	Francisco Duarte, Hebleen Porras, Claudio Soto-Garita, Estela Cordero, Adriana God±nez, Melany Calder3n &

			Teresita Somogyi
EPI_ISL_1067596	HOSPITAL DR. ENRIQUE BALTODANO BRICEÑO	Inciensa, Instituto Costarricense de Investigación y Enseñanza en Nutrición y Salud	Francisco Duarte, Hebleen Porras, Claudio Soto-Garita, Estela Cordero, Adriana Godínez, Melany Calderón, Caterina Guzmán, Nazareth Ruiz & Adriana Bermúdez-Espinoza
EPI_ISL_1379426	HOSPITAL DR. MAX PERALTA JIMENEZ	Inciensa, Instituto Costarricense de Investigación y Enseñanza en Nutrición y Salud	Francisco Duarte, Hebleen Porras, Claudio Soto-Garita, Estela Cordero, Adriana Godínez, Melany Calderón & Mónica Charpentier-Artavia
EPI_ISL_1379417,EPI_ISL_1379418,EPI_ISL_1379419	HOSPITAL DR. TONY FACIO CASTRO	Inciensa, Instituto Costarricense de Investigación y Enseñanza en Nutrición y Salud	Francisco Duarte, Hebleen Porras, Claudio Soto-Garita, Estela Cordero, Adriana Godínez, Melany Calderón & Tashana Anglin-Williams
EPI_ISL_1067592	HOSPITAL GOLFITO MANUEL MORA VALVERDE	Inciensa, Instituto Costarricense de Investigación y Enseñanza en Nutrición y Salud	Francisco Duarte, Hebleen Porras, Claudio Soto-Garita, Estela Cordero, Adriana Godínez, Melany Calderón &

			Mariel LÃ³pez
EPI_ISL_914834	HOSPITAL METROPO LITANO	Inciensa, Instituto Costarricense de Investigaci3n y Ense±anza en Nutrici3n y Salud	Francisco Duarte, Hebleen Porras, Claudio Soto-Garita, Estela Cordero, Adriana GodÃ±ez, Melany CalderÃ³n & Margarita Lee-Lui
EPI_ISL_1379421,EPI_ISL_1379422	HOSPITAL SAN JUAN DE DIOS	Inciensa, Instituto Costarricense de Investigaci3n y Ense±anza en Nutrici3n y Salud	Francisco Duarte, Hebleen Porras, Claudio Soto-Garita, Estela Cordero, Adriana GodÃ±ez, Melany CalderÃ³n & Daniel Cascante-Serrano
EPI_ISL_1379399	HOSPITAL SAN VITO DE COTO BRUS	Inciensa, Instituto Costarricense de Investigaci3n y Ense±anza en Nutrici3n y Salud	Francisco Duarte, Hebleen Porras, Claudio Soto-Garita, Estela Cordero, Adriana GodÃ±ez & Melany CalderÃ³n
EPI_ISL_1067594	HOSPITAL SAN VITO DE COTO BRUS	Inciensa, Instituto Costarricense de Investigaci3n y Ense±anza en Nutrici3n y Salud	Francisco Duarte, Hebleen Porras, Claudio Soto-Garita, Estela Cordero, Adriana GodÃ±ez, Melany CalderÃ³n & Mariel LÃ³pez
EPI_ISL_1195906	Houston Health Dept.	Houston Health Dept.	Ryker Penn, Pamela Brown, Adolpho Lara

EPI_ISL_1074844,EPI_ISL_1074881,EPI_ISL_1075670,EPI_ISL_1236375,EPI_ISL_1305613	Houston Methodist Hospital	Houston Methodist Hospital	S. Wesley Long, Randall J. Olsen, Paul A. Christensen, Sishir Subedi, Robert Olson, James J. Davis, Matthew Ojeda Saavedra, Prasanti Yerramilli, Layne Pruitt, Kristina Reppond, Madison N. Shyer, Jessica Cambric, Ilya J. Finkelstein, Jimmy Gollihar, and James M. Musser
EPI_ISL_728204	Institute of Microbiology, Universidad San Francisco de Quito	Institute of Microbiology, Universidad San Francisco de Quito	Sully MÃ¡rquez, BelÃ©n Prado-Vivar, Juan JosÃ© Guadalupe, Monica Becerra-Wong, Bernardo GutiÃ©rrez, Tania Guayasamin, Patricio Reyes, VerÃ³nica BarragÃ¡n, Patricio Rojas-Silva, Gabriel Trueba, Michelle Grunauer, PaÃ¶l CÃ¡rdenas
EPI_ISL_1378834	Instituto de Medicina Tropical & Salud Global Universidad Iberoamericana	Grubaug Lab - Yale School of Public Health	Joseph Fauver, Mallery Breban, Isabell Ott, Tara Alpert, Mary Petrone, Anderson Brito, Chantal Vogels,

			Annie Watkins, Chaney Kalinich, Jessica Rothman, Robert Paulino-Ramirez, Alejandro Vallejo Degaudenzi, Victor Virgilio Calderon, Elisa Contreras, Esperanza Mendoza, Nathan Grubaugh
EPI_ISL_1287540,EPI_ISL_1307785	Istituto Zooprofilattico Sperimentale del Mezzogiorno	TIGEM	Antonio Grimaldi Patrizia Annunziata Francesco Panariello Biancamaria Pierri Claudia Tiberio Valentina Bouche Chiara Colantuono Maria Concetta Cuomo Denise Di Concilio Lucio Di Filippo Anna Manfredi Marcello Salvi Antonio Limone Luigi Atripaldi Pellegrino Cerino Andrea Ballabio Davide Cacchiarelli
EPI_ISL_1305824	Johns Hopkins Hospital Department of Pathology	Johns Hopkins Hospital Department of Pathology	C. Paul Morris, Chun Huai Luo, Adannaya Amadi, Matthew Schwartz, Heba H. Mostafa

<p>EPI_ISL_1091952,EPI_ISL_1171781,EPI_ISL_1171850,EPI_ISL_1238946,EPI_ISL_981074,EPI_ISL_981079,EPI_ISL_981090,EPI_ISL_981091,EPI_ISL_981092,EPI_ISL_981093</p>	<p>Johns Hopkins Hospital Department of Pathology</p>	<p>Johns Hopkins Hospital Department of Pathology</p>	<p>C. Paul Morris, Chun Huai Luo, Adannaya Amadi, Matthew Schwartz, Nicholas Gallagher, Heba H. Mostafa</p>
<p>EPI_ISL_910601,EPI_ISL_910602,EPI_ISL_910605</p>	<p>Laboratoire national de sante, Microbiologie, Virology</p>	<p>Laboratoire national de sante, Microbiologie, Microbial Genomics Platform</p>	<p>Anke Wienecke-Baldacchino, Catherine Ragimbeau, Jessica Tapp, Fatu Djabi, Lise Pignon, Raoul Salmon, Tamir Abdelrahman</p>
<p>EPI_ISL_1196426,EPI_ISL_1196427</p>	<p>LABORATORIO CLINICO CENAHCE</p>	<p>Inciensa, Instituto Costarricense de Investigaci3n y Ense±anza en Nutrici3n y Salud</p>	<p>Francisco Duarte, Hebleen Porras, Claudio Soto-Garita, Estela Cordero, Adriana God±nez, Melany Calder3n & Andr3s Feoli-Grant</p>
<p>EPI_ISL_1067593</p>	<p>LABORATORIO CLINICO LABIN</p>	<p>Inciensa, Instituto Costarricense de Investigaci3n y Ense±anza en Nutrici3n y Salud</p>	<p>Francisco Duarte, Hebleen Porras, Claudio Soto-Garita, Estela Cordero, Adriana God±nez, Melany Calder3n, Caterina Guzm±n, Nazareth Ruiz & Pei Ling Chan Ma</p>

<p>EPI_ISL_1222352,EPI_ISL_1320254,EPI_ISL_1320347,EPI_ISL_1320769,EPI_ISL_1338611,EPI_ISL_1339021</p>	<p>Laboratory Corporation of America</p>	<p>Centers for Disease Control and Prevention Division of Viral Diseases, Pathogen Discovery</p>	<p>Peter W. Cook, Dakota Howard, Dhvani Batra, Ben L. Rambo-Martin, Minoo Agarwal, Eyad Almasri, Debbie Boles, Ayla Burns, Nuthawin Charoensri, Oren Cohen, Susan Countryman, Mary Ann Cristobal, Bobbi Croy, Suzanne Dale, Hrushikesh Deshmukh, Amanda Douglas, Vincent Drouillon, Marcia Eisenberg, Howard Engler, Rama Ghatti, Prashant Gupta, Susan Hicks, Jake Humphrey, Lax Iyer, Manoj Jain, Mohan Kolli, Brian Krueger, Tim Kuphal, Stanley Letovsky, Michael Levandoski, Craig Lukasik, Jonathan Meltzer, Brian Norvell, Mindy Nye, Scott Parker, Christos Petropoulos, John Pruitt, Steven Ragan, Scott Ryan, Mike Sapeta, Jana Schroth, Suresh Babu</p>
--	--	--	--

			Selvaraju, Goran Stevovic, Amanda Suchanek, Andrea Throop, Lyndon Tilson, Thomas Urban, Joe Voshell, Kimberly Wagner, Jonathan Williams, Mary Williamson, Qian Zeng, Tricia Zwiefelhofer, Clinton R. Paden, Suxiang Tong, Duncan MacCannell
EPI_ISL_1030664,EPI_ISL_1030713,EPI_ISL_1031846	Laboratory Corporatio n of America	Respiratory Viruses Branch, Division of Viral Diseases, Centers for Disease Control and Prevention	Peter W. Cook, Dakota Howard, Dhwani Batra, Ben L. Rambo- Martin, Clinton R. Paden, Suxiang Tong, Duncan MacCannell
EPI_ISL_1161650,EPI_ISL_1161651,EPI_ISL_1162989	Laboratory Corporatio n of America	Respiratory Viruses Branch, Division of Viral Diseases, Centers for Disease Control and Prevention	Peter W. Cook, Dakota Howard, Dhwani Batra, Ben L. Rambo- Martin, Minoo Agarwal, Eyad Almasri Debbie Boles, Ayla Burns, Nuthawin Charoensri, Oren Cohen, Susan Countryman, Mary Ann Cristobal, Bobbi Croy, Suzanne Dale, Hrushikesh Deshmukh, Amanda

			Douglas, Vincent Drouillon, Marcia Eisenberg, Howard Engler, Rama Ghatti, Prashant Gupta, Susan Hicks, Jake Humphrey, Lax Iyer, Manoj Jain, Mohan Kolli, Brian Krueger, Tim Kuphal, Stanley Letovsky, Michael Levandoski, Craig Lukasik, Jonathan Meltzer, Brian Norvell, Mindy Nye, Scott Parker, Christos Petrooulos, John Pruitt, Steven Ragan, Scott Ryan, Mike Sapeta, Jana Schroth, Suresh Babu Selvaraju, Goran Stevovic, Amanda Suchanek, Andrea Throop, Lyndon Tilson, Thomas Urban, Joe Voshell, Kimberly Wagner, Jonathan Williams, Mary Williamson, Qian Zeng, Tricia Zwiefelhofer, Clinton R. Paden, Suxiang Tong, Duncan MacCannell
--	--	--	--

EPI_ISL_1175013,EPI_ISL_1333383	Lighthouse Lab in Cambridge	Wellcome Sanger Institute for the COVID-19 Genomics UK (COG-UK) Consortium	Rob Howes, The Lighthouse Lab in Cambridge and Alex Alderton, Roberto Amato, Jeffrey Barrett, Sonia Goncalves, Ewan Harrison, David K. Jackson, Ian Johnston, Dominic Kwiatkowski, Cordelia Langford, John Sillitoe on behalf of the Wellcome Sanger Institute COVID-19 Surveillance Team
EPI_ISL_1011539,EPI_ISL_1121780	Massachusetts General Hospital	Infectious Disease Program, Broad Institute of Harvard and MIT	Lemieux,J.E., Siddle,K.J., Shaw,B., Adams,G., Pierce,V., Turbett,S., Anahtar,M., Branda,J., Slater,D., Harris,J., Lin,A.E., Gladden-Young,A., Lagerborg,K., Rudy,M., DeRuff,K., Carter,A., Normandin,E., Bauer,M., Reilly,S., Tomkins-Tinch,C., Loreth,C., Chaluvadi,S., Neumann,A., Cusick,C., Chapman,S.B., Gnirke,A., Flowers,K., Cerrato,F., Birren,B.W., Gallagher,G., Smole,S., Park,D.J., MacInnis,B.L.

			, Ryan,E., LaRocque,R., Rosenberg,E. and Sabeti,P.C.
EPI_ISL_1336289,EPI_ISL_1336305,EPI_ISL_942356	MD PHL	MD PHL	Maryland Department of Health Laboratories Administrati on
EPI_ISL_854373	MONTEFIO RE MEDICAL CENTER LABORATO RIES	Wadsworth Center, New York State Departmen t of Health	Kirsten St. George, Daryl M. Lamson, Alexis Russel, Matthew Shudt, Melissa A Leisner, Jonathan Plitnick, Navjot Singh, John Kelly, Erasmus Schneider, Erica Lasek- Nesselquist
EPI_ISL_1114676,EPI_ISL_1340918	New Mexico Departme nt of Health Scientific Laboratory	New Mexico Departmen t of Health Scientific Laboratory	Ellie Johnson, Anastacia Griego- Fisher, D'eldra Malone, Jennifer Benoit
EPI_ISL_1091904	New York Presbetyri an / Weill Cornell Medicine	Grubaugh Lab - Yale School of Public Health	Mary Petrone, Joseph Fauver, Tara Alpert, Anderson Brito, Mallery Breban, Anne Wyllie, Chantal Vogels, Annie Watkins, Chaney Kalinich, Isabel Ott, Nathan Grubaugh

EPI_ISL_937194	OCME Office Of Chief Medical Examiner	New York City Public Health Laboratory	Jade Wang, et al.
EPI_ISL_1097814,EPI_ISL_1098174,EPI_ISL_1098299,EPI_ISL_1098486,EPI_ISL_1098498,EPI_ISL_1172495,EPI_ISL_1172496,EPI_ISL_1172661,EPI_ISL_1172803,EPI_ISL_1172965,EPI_ISL_1258689	Pandemic Response Lab - NYC	Pandemic Response Lab, R&D	Henry Lee, Michael Hammerling, Melissa Hopkins, Cybill del Castillo, Shinyoung Clair Kang, William Ward, Pradeep Bugga, Haiping Hao, Jon Laurent
EPI_ISL_1306277,EPI_ISL_1306435,EPI_ISL_1306487,EPI_ISL_1306540,EPI_ISL_1306632,EPI_ISL_1385015,EPI_ISL_1385113,EPI_ISL_1385369,EPI_ISL_1385770,EPI_ISL_1385778	Pandemic Response Lab - NYC	Pandemic Response Lab, R&D	Henry Lee, Michael Hammerling, Melissa Hopkins, Cybill del Castillo, Shinyoung Clair Kang, William Ward, Pradeep Bugga, Sol Rey, Dylan Law, Haiping Hao, Jon Laurent
EPI_ISL_1041357,EPI_ISL_1041633,EPI_ISL_995034,EPI_ISL_995035,EPI_ISL_995036	Pandemic Response Lab - NYC	Pandemic Response Lab, R&D	Henry Lee, Michael Hammerling, Melissa Hopkins, Cybill del Castillo, William Ward, Pradeep Bugga, Haiping Hao, Jon Laurent
EPI_ISL_849762	Public Health Virology Laboratory , Forensic and Scientific Services (PHV-FSS)	Public Health Virology Laboratory, Forensic and Scientific Services (PHV-FSS)	Son Nguyen et al
EPI_ISL_1300526	Public Health Virology- Forensic and Scientific	Public Health Virology- Forensic and Scientific	Son Nguyen

	Services (PHV-FSS)	Services (PHV-FSS)	
EPI_ISL_944743	Public Health Virology-Forensic and Scientific Services (PHV-FSS)	Public Health Virology-Forensic and Scientific Services (PHV-FSS)	Son Nguyen et al
EPI_ISL_1055741,EPI_ISL_1055742	QEI Health Sciences Centre	National Microbiology Laboratory (NML)	Anna Majer, Shari Tyson, Grace Seo, Philip Mabon, Elsie Grudeski, Rhiannon Huzarewich, Russell Mandes, Anneliese Landgraff, Jennifer Tanner, Natalie Knox, Morag Graham, Gary Van Domselaar, Todd Hachette, Jason LeBlanc, Janice Pettipas, Dan Gaston, Nathalie Bastien, Yan Li, Timothy Booth, Darian Hole, Madison Chapel, Kirsten Biggar, CanCOGeN's metadata curation team, Public Health Agency of Canada CanCOGeN team
EPI_ISL_1090855	Quest Diagnostics Incorporated	Respiratory Viruses Branch, Division of Viral Diseases, Centers for Disease Control and Prevention	Peter W. Cook, Dakota Howard, Dhwani Batra, Ben L. Rambo-Martin, S. H. Rosenthal, A. Gerasimova, R. M. Kagan, B. Anderson,

			M. Hua, Y. Liu, L.E. Bernstein, K.E. Livingston, A. Perez, I. A. Shlyakhter, R. V. Rolando, R. Owen, P. Tanpaiboon, F. Lacbawan, Clinton R. Paden, Suxiang Tong, Duncan MacCannell
EPI_ISL_914824,EPI_ISL_914829	TAMIZAJE COMUNITARIO - PASO CANOAS	Inciensa, Instituto Costarricense de Investigación y Enseñanza en Nutrición y Salud	Francisco Duarte, Hebleen Porras, Claudio Soto-Garita, Estela Cordero, Adriana Godínez, Melany Calderón & Mariel López
EPI_ISL_1067600	TAMIZAJE COMUNITARIO - PASO CANOAS	Inciensa, Instituto Costarricense de Investigación y Enseñanza en Nutrición y Salud	Francisco Duarte, Hebleen Porras, Claudio Soto-Garita, Estela Cordero, Adriana Godínez, Melany Calderón & Mónica Charpentier-Artavia
EPI_ISL_1067590,EPI_ISL_1067595	TAMIZAJE COMUNITARIO - PASO CANOAS	Inciensa, Instituto Costarricense de Investigación y Enseñanza en Nutrición y Salud	Francisco Duarte, Hebleen Porras, Claudio Soto-Garita, Estela Cordero, Adriana Godínez, Melany Calderón & Mariel López
EPI_ISL_962879	UCLA Clinical Micro Lab	Los Angeles County PHL	P. Hemarajata et al.

EPI_ISL_1252569	University of Wisconsin-Madison AIDS Vaccine Research Laboratories	University of Wisconsin-Madison AIDS Vaccine Research Laboratories	Gage Moreno, Katarina Braun, et al. AIDS Vaccine Research Laboratories
EPI_ISL_1209182	UW Virology Lab	UW Virology Lab	Pavitra Roychoudhury, Hong Xie, Lasata Shrestha, Shah Mohamed Bakhash, Michelle Lin, Noah Baker, Sean Ellis, Saraswathi Sathees, Meei-Li Huang, Keith R Jerome, Alexander Greninger