

## **SUPPLEMENTAL MATERIAL**

### **TIGIT as a therapeutic target of HPV-positive head and neck squamous cell carcinomas**

Xiuning Le, Minghao Dang, Venkatesh L. Hegde, Bo Jiang, Ravaen Slay, Weihong Xiao, Keiko Akagi, Joseph Fresquez, Kathrina L. Marcelo, Qianyun Luo, Pragya Sinha, Ananta V. Yanamandra, Joe Dan Dunn, Diana Bell, Michelle Williams, Edwin Parra, Ryan Goepfert, Stephen H. Lai, Neil Gross, Amit Agrawal, Alexandre Reuben, Jeffrey Myers, Michael A. Curran, K. Jagannadha Sastry, Linghua Wang, Maura L. Gillison

## Supplemental Methods

### *Dissociation of tissue to generate single-cell suspension for single-cell RNA-Seq.*

#### Complete medium

RPMI + 10% FBS

1% non-essential amino acids

1% sodium-pyruvate

1% L-glutamine

1% penicillin-streptomycin

1% HEPES buffer

#### Dissociation solution

Complete medium containing:

1mg/ml collagenase A

0.4mg/ml Hyaluronidase

BSA fraction V (1:5, such as: in a total of the 40 ml solution containing 8 ml of the BSA)

#### Procedure

1. Prepare a dissociation mixture, which should be made fresh every time. 20 ml is sufficient for a small tumor, but 40 ml is better for a larger tumor.
2. Mince the tissue with scalpels in the dissociation solution in a 10 cm cell culture dish until the tissue is minced into small pieces and then transfer the tissue to a 50 ml Falcon tube.
3. Gently dissociate the minced tissue on a rotary shaker by placing at 37°C until all large tissue fragments are digested (1-2 hours, or overnight if needed). Note: **the tube should be sealed with Parafilm if the rotary shaker is not in a 5% CO<sub>2</sub> incubator.**
4. Centrifuge the tube at 350g for 5 min. Remove the supernatant and add 1-5 ml of pre-warmed Trypsin-EDTA to the collagenase/Hyaluronidase-dissociated cells and resuspend the cells. Gently pipette up and down with a 1 ml micropipette for 1-3 min. The sample should become very stringy due to the lysis of dead cells and the release of DNA.
5. Add 10 ml of cold RPMI1640 without phenol red supplemented with 2% FBS and centrifuge at 350 g for 5 min.
6. Remove as much of the supernatant as possible. The cells may be a large “stringy mass” floating in the solution.
7. Add 5 ml of pre-warmed 5U/ml Dispase and 50 µl DNase I solution (10 mg/ml in 0.15 M NaCl). Pipette the sample for 1 min with a 1 ml micro pipettor to further dissociate cell clumps. The sample should now be cloudy but not stringy, if still stringy, add an additional 50 µl DNase I and pipette as above.
8. Dilute the cell suspension with an additional 10 ml of cold RPMI1640 without phenol red supplemented with 2% FBS and filter the cell suspension through a 40 µm Falcon cell strainer on a 50 ml tube and centrifuge at 450 g for 5 min and discard the supernatant.

9. If the cell pellet is heavily contaminated with red blood cells, resuspend the pellet in a 1:4 mixture of cold RPMI1640 without phenol red supplemented with 2% FBS: Ammonium Chloride solution, centrifuge at 450 g for 5 min, and discard the supernatant.
10. Resuspend cells in BSA +PBS (5 ml PBS + 40 µl of 50 mg/ml BSA).
11. For single-cell sequencing, cell viability needs to be **50%** minimum, and cell density should be **7 x 10<sup>5</sup> - 1.2 x 10<sup>6</sup> cells/ml**.

*Doublet removal in single-cell RNA-Seq analysis.* Doublets were identified using a multi-step approach: 1) library complexity: cells with high complexity libraries (in which detected transcripts are aligned to more than 6500 genes) were removed; 2) Cluster distribution: doublets or multiplets likely form distinct clusters with hybrid expression features and exhibit an aberrantly high gene count; 3) cluster marker gene expression: cells of a cluster express markers from distinct lineages (e.g., cells in the T-cell cluster showed expression of myeloid cell markers and vice versa); 4) doublet detection algorithm: DoubletFinder, an algorithm to predict doublets in scRNA-seq data, was applied to further identify and clean doublets that could have been missed by steps 1-3.

*Analysis of bulk RNA-Seq data from The Cancer Genome Atlas (TCGA).* For the TCGA RNA-Seq data analysis, gene expression data and clinical annotation were downloaded from the PanCanAtlas study (1). Analysis of associations between expression (< or ≥ median) of functionally characterized inhibitory immune checkpoint genes (2) in RNA-Seq data was performed by Cox proportional-hazards regression model implemented in the R package *survival*. Comparisons between groups were analyzed by the Kaplan-Meier method and compared by the log-rank test using R function *ggsurvplot*.

*Dissociation of human tumor samples for flow cytometry.*

#### Reagent preparation

Liberase TL (Sigma-Aldrich; 5401020001): resuspend each bottle in 15 ml of PBS or serum-free RPMI and use 750 µl per tumor.

Sigma Collagenase H (C8051-500mg): resuspend 500 mg in 12.5 ml water and use 125 µl to 5 ml digestion media.

Roche DNAase (10 104 159 001): resuspend 100 mg in 5ml of serum-free media and add 40 µl to 5 ml of digestion media.

#### Procedure

1. Place 70 µm cell strainers (BD Biosciences) into 6 cm tissue culture plates, or up to 4 x 70 µm cell strainers can be placed into a single 10 cm TC plate.
2. Make digestion media: either DNase + Collagenase H or DNase + Liberase in either serum-free, beta-mercaptoethanol-free RPMI or X-vivo 15 media (Lonza).
3. Add 3-4 ml of cold digestion media to each 6 cm plate or 10-12 ml for each 10 cm dish.
4. Keep plates on ice and place dissected tumors into cell strainers in the plates of digestion media. Always keep these on ice at this stage. Optional: it helps to

dice up tumors with either forceps or scissors to facilitate access of the collagenase to inner portions of the tissue.

5. Once all tumor tissues are dissected, place the plates into a 37°C incubator for 15-45 min (never exceed 30 min if using Liberase, as CD4 may be cleaved).
6. Remove plates with digested tumors from 37°C and mash the tumors through the cell strainers using the back end of a 3 ml or 5 ml syringe plunger. Wash the strainer with complete RPMI. Transfer the liquid to a 15 ml tube (or 50 ml for 10 cm plates) and place on ice.
7. Once all plates have been mashed and transferred, pellet the cells by spinning at 2000 rpm for 5 minutes.
8. Resuspend each pellet in 5 ml of complete RPMI and then slowly underlay the RPMI with 5 ml of Histopaque 1119 Ficoll (Sigma-Aldrich) so that there is a clean, undisturbed interface.
9. Spin to remove dead cells and tumor debris 1810 rpm for 10-20 minutes with the brake off (or set to the lowest possible level).
10. Extract the interface to a new 15 ml tube and fill to at least 12 ml with complete RPMI. Vortex, and then spin down at 2000 rpm for 5 minutes.
11. Cell pellets can now be resuspended for applications such as flow cytometry, magnetic bead purification, fixation for intracellular staining, or RNA purification.

*Flow cytometry antibodies for analysis of human immune cells.*

Fluorochrome	Target	Clone	Source	Catalog #
BUV 805	CD45	H130	BD Biosciences	564914
BUV 661	CD11c	B-ly6	BD Biosciences	565067
PE-Cy5	CD33	WM53	BD Biosciences	551377
BUV 737	CD3	UCHT1	BD Biosciences	564307
BUV 496	CD4	SK3	BD Biosciences	564651
BUV 563	CD8	RPA-T8	BD Biosciences	565695
BV 605	CD14	M5E2	BD Biosciences	564054
BB APC	CD15	HI98	BD Biosciences	551376
PE	CD112	TX31	Biologend	337410
BV 711	CD155	TX24	BD Biosciences	745517
PE-Cy7	TIGIT	A15153G	Biologend	372714
BB 515	CD226	DX11	BD Biosciences	565152

*Flow cytometry antibodies for analysis of murine immune cells.*

<b>Panel 1.</b>			
Fluorochrome	Target	Source	Catalog #
APC	E7 Tetramer	Baylor Tetramer Core	N/A
BUV737	CD3	BD Biosciences	612803
BUV396	CD8	BD Biosciences	563786
BV786	CD11b	BD Biosciences	740861
APC Cy-7	CD45	BD Biosciences	557659
BV510	Live/Dead	BD Biosciences	564406
PerCP Cy5.5	NK1.1	BD Biosciences	551114
BV421	Granzyme B	Biologend	396414
PE-Cy7	PD-1	Biologend	109110

BV605	CD4	Biolegend	100548
PE-CF594	CD11c	Biolegend	117348
BV650	Gr-1	Biolegend	108442
BV711	IFNg	Biolegend	505835
PE	Arg1	Life Technologies	12-3697-82
Alexa Fluor 488	FoxP3	Life Technologies	53-4774-42
Alexa Fluor 700	CD112	R&D Systems	FAB3869
	Fc Block	BD Biosciences	553142

<b>Panel 2.</b>			
Fluorochrome	Target	Source	Catalog #
APC	E7 Tetramer	Baylor Tetramer Core	N/A
BUV737	CD3	BD Biosciences	612803
BUV396	CD8	BD Biosciences	563786
APC Cy7	CD11b	BD Biosciences	557657
BV510	Live/Dead	BD Biosciences	564406
PE	IA-IE	BD Biosciences	557000
BV711	Ki-67	BD Biosciences	563755
BV605	CD4	Biolegend	100548
Alexa Fluor 700	CD45	Biolegend	103128
BV421	NK1.1	Biolegend	108741
BV650	Gr-1	Biolegend	108442
PE-Cy7	CD155	Biolegend	131512
PE-CF594	CD11c	Biolegend	117348
BV786	CD226	Biolegend	133611
PerCP eFluor 710	TIGIT	Invitrogen	46-9501-82
Alexa Fluor 488	FoxP3	Invitrogen	53-4774-42
	Fc Block	BD Biosciences	553142

### Supplemental Methods References

1. Liu J, et al. An Integrated TCGA Pan-Cancer Clinical Data Resource to Drive High-Quality Survival Outcome Analytics. *Cell*. 2018;173(2):400-16 e11.
2. Rumpret M, et al. Functional categories of immune inhibitory receptors. *Nat Rev Immunol*. 2020;20(12):771-80.

## **Supplemental Tables**

Supp Table 1. Patient information for the 14 cases analyzed by single-cell RNA-Seq and TCR-Seq.

Supp Table 2. Significant interactions of immune molecules in tumor compared to normal tissue. (Separate file)

Supp Table 3. Survival analysis by immune molecules in TCGA cohort, hazard ratio, and p values.

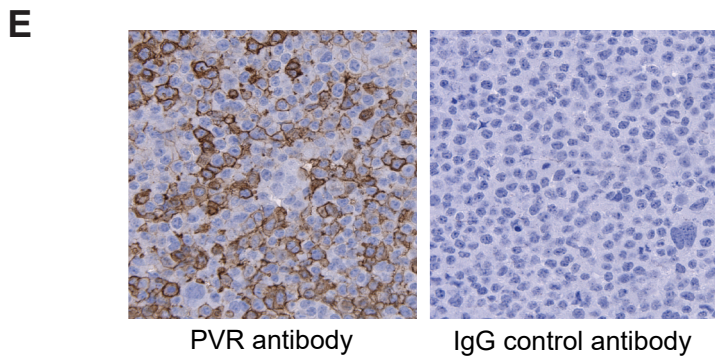
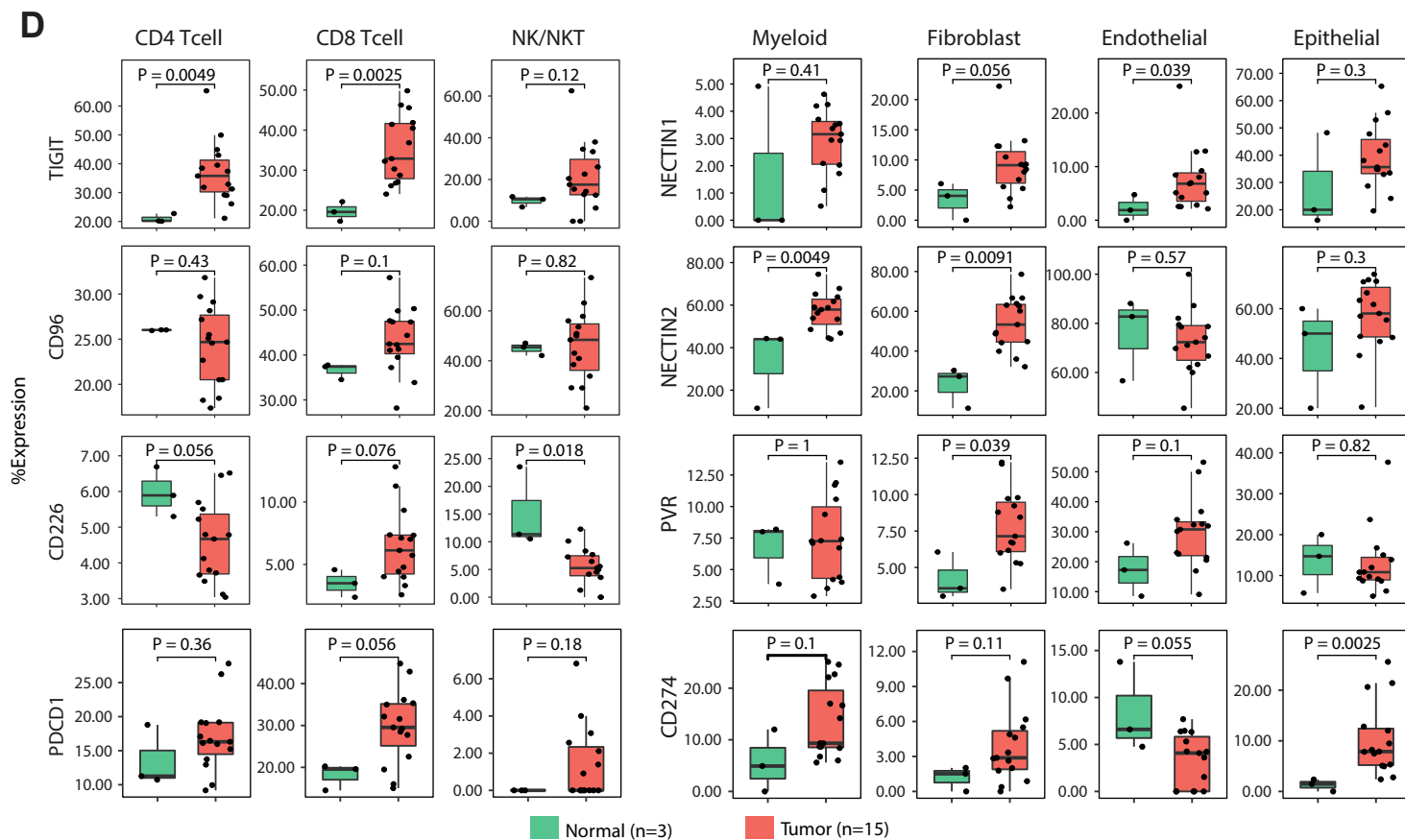
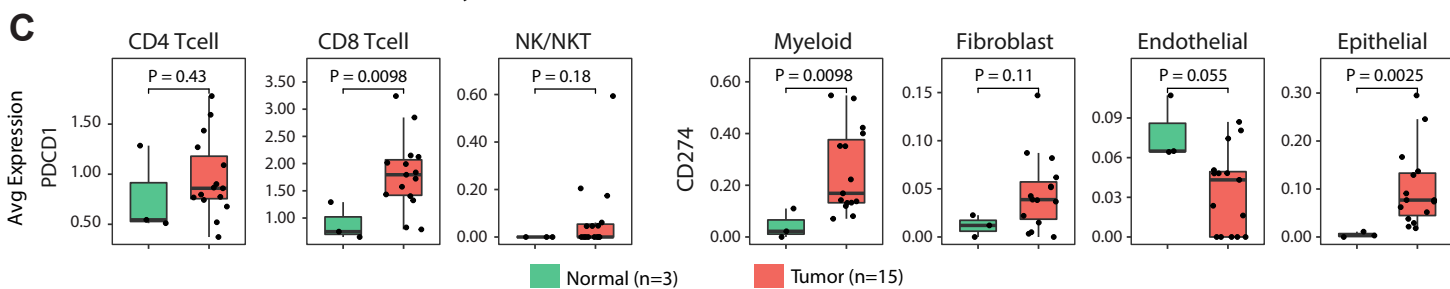
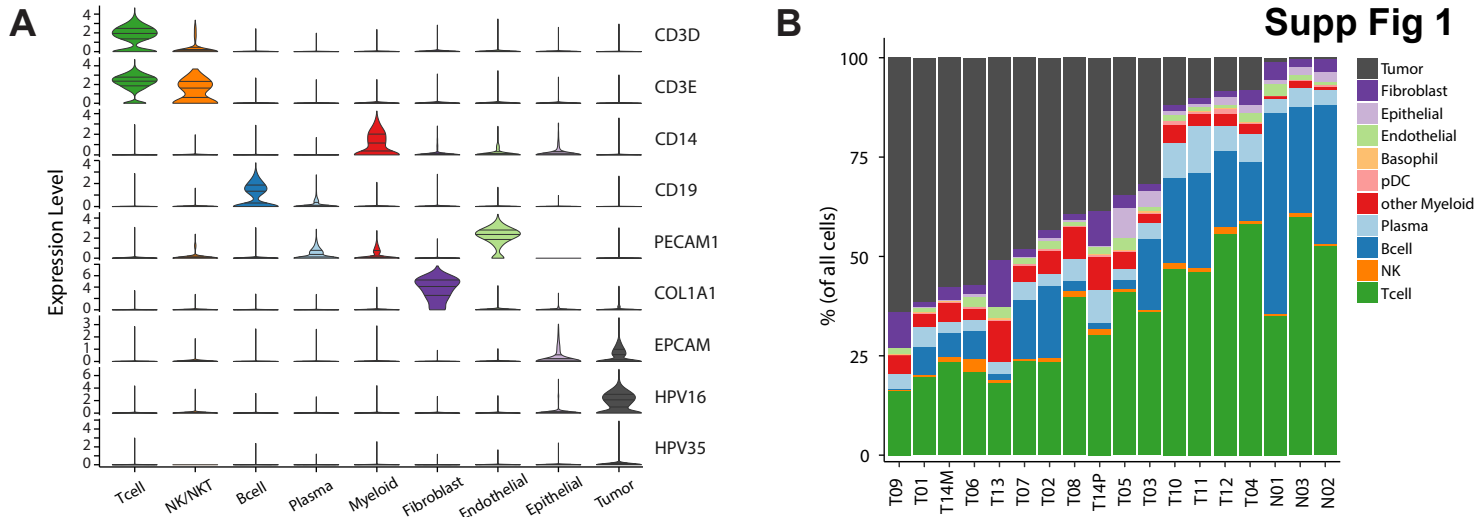
Supp Table 4. Top 50 differentially expressed genes in TIGIT<sup>+</sup> vs. TIGIT<sup>-</sup> CD8<sup>+</sup> T cells and top 50 differentially expressed genes in TCR expanded vs. not-expanded CD8<sup>+</sup> T cells. (Separate file)

Supp Table 5. Top 50 differentially expressed genes in subclusters of CD8<sup>+</sup> T cells, CD4<sup>+</sup> T cells, regulatory T cells, and myeloid cells, respectively. (Separate file)

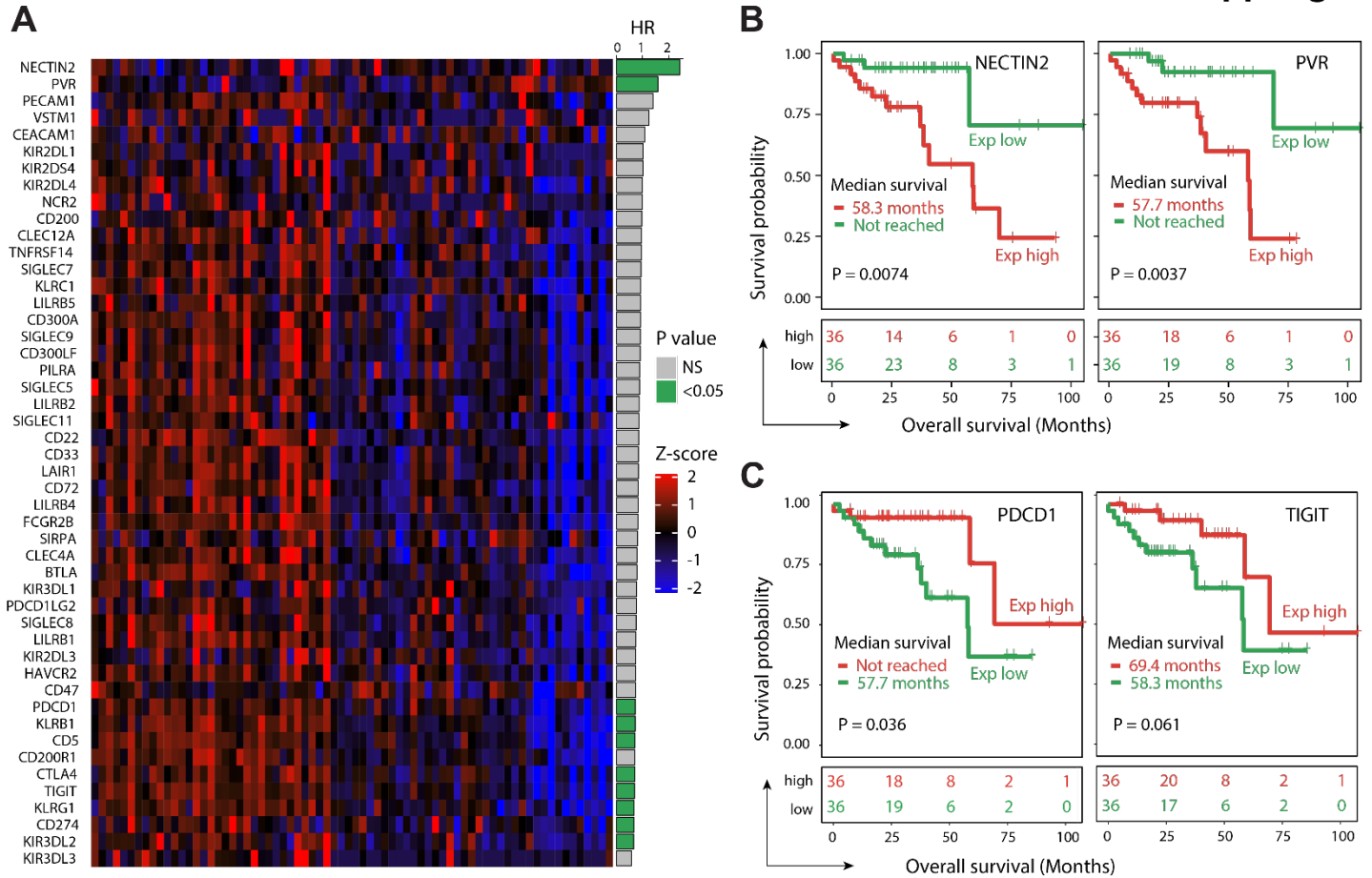
Supplemental Table 1. Patient information for the 14 cases analyzed by single-cell RNA-Seq and TCR-Seq.													
Case	Diagnosis	Tissue	Protocol	HPV Status (clinical)	Prior treatment	Age at diagnosis	Gender	Smoking history	AJCC 8th ed Staging		Tumor size (cm)	Neck LN involvement	Comments
									Clinical	Pathologic			
1	OPSCCA	T/N	LAB02-039/PA18-0782	p16 pos; HPV pos	none	71-75	M	Former (6 pack years)	T2N1M0	T2N1	2.5	2 involved (3.1 cm)	SCCA of left base of tongue; has active DLBCL; adjacent normal
2	OPSCCA	T/N	LAB02-039/PA18-0782	p16 pos; HPV pos	none	56-60	M	Never	T1N1M0	T1N1	1.2	1 involved (2.1 cm)	SCCA of left tonsil; h/o prostate cancer; contralateral tonsil as normal
3	OPSCCA	T/N	LAB02-039/PA18-0782	p16 pos; HPV pos	none	56-60	M	Former (10 pack years)	T2N1M0	T2N1	2.3	1 involved (4.7 cm)	SCCA of base of tongue; adjacent normal
4	OPSCCA	T	LAB02-039/PA18-0782	HPV pos	none	66-70	M	Never	T1N1M0	T1N1	1.7	4 involved (2.5 cm)	Left base of tongue
5	OPSCCA	T	LAB02-039/PA18-0782	HPV pos	none	51-55	M	Former (no pack years on record)	T4N1M0	-	3.5	multiple involved (3.3 cm)	Sample collected from biopsy procedure (EUA)
6	OPSCCA	T	LAB02-039/PA18-0782	p16 pos	none	51-55	M	Never	T2N1M0	-	2.9	2 involved (1.5 cm)	Sample collected from biopsy procedure
7	OPSCCA	T	LAB02-039/PA18-0782	p16 pos	none	46-50	M	Never	T1N0M0	T2N1cM0	3	1 involved (0.3 cm)	SCCA
8	OPSCCA	T	LAB02-039/PA18-0782	HPV pos	none	66-70	M	Light (no pack years on record)	T1N1M0	T2N1	2.1	1 involved (3.5 cm)	
9	OPSCCA	T	PA19-0470	HPV pos; p16 pos	none	71-75	M	Former (no pack years on record)	T1N1M0	-	1.2	1 involved (2.6 cm)	Sample collected from biopsy procedure
10	OPSCCA	T	LAB02-039/PA18-0782	HPV pos	none	56-60	M	Never	T2N0M0	T2N0	2.2	0 involved	
11	OPSCCA	T	LAB02-039/PA18-0782	HPV pos	none	56-60	M	Never	T1N1M0	T2N1	2.5	2 involved (3.5 cm)	
12	OPSCCA	T	LAB02-039/PA18-0782	p16 pos	none	56-60	M	Former (no pack years on record)	T2N1M0	T2N0	2.5	0 involved	SCCA of left tonsil
13	OPSCCA	T	LAB02-039/PA18-0782	p16 pos	none	51-55	M	Never	T2N0M0	T2N0	4	0 involved	
14	OPSCCA	T primary, T met (neck lymph node)	LAB02-039/PA18-0782	p16 pos	none	51-55	M	Never	T1N1M0	T1N1	1.8	0 involved	

Supplemental Table 3. Survival analysis by immune molecules in TCGA cohort, hazard ratio, and p values.								
gene	HR	p.value	fdr	coef	exp(coef)	se(coef)	z	Pr(> z )
NECTIN2	2.42561434	0.02656919	1	0.88608483	2.42561434	0.39953513	2.21778952	0.02656919
PVR	1.58434583	0.02538763	1	0.4601716	1.58434583	0.20585162	2.23545288	0.02538763
PECAM1	1.40111814	0.24230454	1	0.33727059	1.40111814	0.28845136	1.16924599	0.24230454
VSTM1	1.24517904	0.534832	1	0.21927932	1.24517904	0.35330771	0.62064686	0.534832
CEACAM1	1.08258828	0.70942076	1	0.07935473	1.08258828	0.21295615	0.37263413	0.70942076
KIR2DL1	1.02122728	0.92195598	1	0.02100512	1.02122728	0.21440322	0.09797017	0.92195598
KIR2DS4	1.02110655	0.91591344	1	0.02088689	1.02110655	0.1978249	0.10558271	0.91591344
KIR2DL4	0.9961554	0.98136357	1	-0.003852	0.9961554	0.16490187	-0.0233594	0.98136357
NCR2	0.99112964	0.97501075	1	-0.0089099	0.99112964	0.2844398	-0.0313245	0.97501075
CD200	0.97407733	0.85596231	1	-0.0262646	0.97407733	0.14469545	-0.1815163	0.85596231
CLEC12A	0.96369158	0.7947492	1	-0.036984	0.96369158	0.14216485	-0.2601485	0.7947492
TNFRSF14	0.96038997	0.84103224	1	-0.0404159	0.96038997	0.20150167	-0.2005733	0.84103224
SIGLEC7	0.94572009	0.76723336	1	-0.0558086	0.94572009	0.18854545	-0.2959957	0.76723336
KLRC1	0.926713	0.64800496	1	-0.0761114	0.926713	0.1667151	-0.4565355	0.64800496
LILRB5	0.92337398	0.61881429	1	-0.0797209	0.92337398	0.16023295	-0.4975315	0.61881429
CD300A	0.91954251	0.68443527	1	-0.083879	0.91954251	0.20638588	-0.4064183	0.68443527
SIGLEC9	0.91662766	0.66032738	1	-0.0870539	0.91662766	0.19809241	-0.4394612	0.66032738
CD300LF	0.91139271	0.61181256	1	-0.0927814	0.91139271	0.18282487	-0.5074878	0.61181256
PILRA	0.88866246	0.52955629	1	-0.1180378	0.88866246	0.18775393	-0.6286835	0.52955629
SIGLEC5	0.88772371	0.49761819	1	-0.1190947	0.88772371	0.17559323	-0.6782421	0.49761819
LILRB2	0.87632041	0.47994761	1	-0.1320235	0.87632041	0.1868997	-0.7063868	0.47994761
SIGLEC11	0.86329135	0.4169193	1	-0.147003	0.86329135	0.18108784	-0.8117775	0.4169193
CD22	0.85531397	0.16163906	1	-0.1562867	0.85531397	0.11166681	-1.3995802	0.16163906
CD33	0.84709846	0.38306414	1	-0.1659383	0.84709846	0.19023857	-0.8722644	0.38306414
LAIR1	0.84552511	0.34963094	1	-0.1677974	0.84552511	0.17940388	-0.9353054	0.34963094
CD72	0.83844945	0.30233737	1	-0.176201	0.83844945	0.17083108	-1.031434	0.30233737
LILRB4	0.8337869	0.20562129	1	-0.1817774	0.8337869	0.14361834	-1.2656978	0.20562129
FCGR2B	0.8225398	0.29876335	1	-0.1953584	0.8225398	0.18800931	-1.039089	0.29876335
SIRPA	0.81069369	0.38838805	1	-0.209865	0.81069369	0.24330923	-0.8625443	0.38838805
CLEC4A	0.78844109	0.30733416	1	-0.2376976	0.78844109	0.23284697	-1.0208317	0.30733416
BTLA	0.78752759	0.0765205	1	-0.2388569	0.78752759	0.13485277	-1.7712418	0.0765205
KIR3DL1	0.77983311	0.27123393	1	-0.2486753	0.77983311	0.22602218	-1.1002254	0.27123393
PDCD1LG2	0.77139101	0.22365758	1	-0.2595599	0.77139101	0.21330304	-1.2168597	0.22365758
SIGLEC8	0.75521454	0.0607504	1	-0.2807534	0.75521454	0.14971058	-1.8753077	0.0607504
LILRB1	0.74731219	0.08705271	1	-0.2912723	0.74731219	0.17021979	-1.7111539	0.08705271
KIR2DL3	0.7452329	0.19269031	1	-0.2940585	0.7452329	0.22573667	-1.3026616	0.19269031
HAVCR2	0.74387378	0.12890588	1	-0.2958839	0.74387378	0.19486165	-1.5184306	0.12890588
CD47	0.73663984	0.38638411	1	-0.3056562	0.73663984	0.35287291	-0.8661934	0.38638411
PDCD1	0.72516571	0.01541199	0.7089516	-0.3213551	0.72516571	0.13265156	-2.4225503	0.01541199
KLRB1	0.72317999	0.02600394	1	-0.3240971	0.72317999	0.1455862	-2.226153	0.02600394
CD5	0.71201443	0.01068337	0.51280176	-0.3396571	0.71201443	0.13304815	-2.5528885	0.01068337
CD200R1	0.70593621	0.05975071	1	-0.3482304	0.70593621	0.18497031	-1.8826286	0.05975071
CTLA4	0.6991482	0.02355455	1	-0.3578925	0.6991482	0.15805752	-2.2643183	0.02355455
TIGIT	0.69602946	0.01471081	0.69140792	-0.3623633	0.69602946	0.14854478	-2.4394213	0.01471081
KLRG1	0.67433901	0.03554334	1	-0.3940223	0.67433901	0.18744103	-2.1021134	0.03554334
CD274	0.67056158	0.04817056	1	-0.3996397	0.67056158	0.20226109	-1.9758607	0.04817056
KIR3DL2	0.65908442	0.0380449	1	-0.4169037	0.65908442	0.20097838	-2.0743706	0.0380449
KIR3DL3	0.58098586	0.27041756	1	-0.5430289	0.58098586	0.49272129	-1.1021015	0.27041756



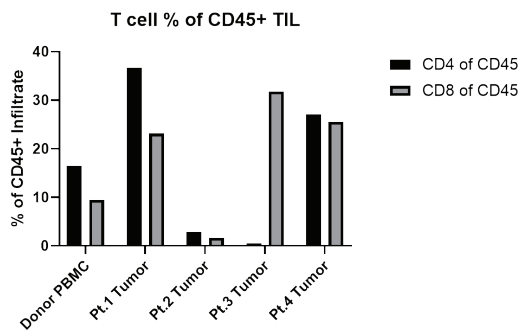


**Supplemental Figure 1. TIGIT family molecules were prevalent in HPV-positive HNSCC by scRNA-Seq.** (A) Violin plots showing expression of key cell lineage-associated genes across different major cell types. Black horizontal lines (from top to bottom) represent upper quartile, median, and lower quartile values. (B) Stacked bar plot showing the percentage of each major cell type in individual tumor (T) and normal tissue (N) samples. For case 14, samples collected from the primary (P) and a metastatic (M) tumor were analyzed. Samples were ordered by tumor content. (C) Comparisons of average expression levels of *PDCD1* in CD4<sup>+</sup> T/CD8<sup>+</sup> T/NK cells and *CD274* in myeloid/fibroblast/endothelial/epithelial cells between tumor and normal samples. Box, median ± interquartile range. Whiskers, the minimum and maximum values. P values were calculated by a two-sided Wilcoxon rank-sum test and P<0.05 was bolded. (D) Comparisons of expression frequency of *TIGIT/CD96/CD226* in CD4<sup>+</sup> T/CD8<sup>+</sup> T/NK cells and *NECTIN1/NECTIN2/PVR* in myeloid/fibroblast/endothelial/epithelial cells between tumor and normal samples. Box, median ± interquartile range. Whiskers, the minimum and maximum values. P values were calculated by a two-sided Wilcoxon rank-sum test and P<0.05 was bolded. (E) Immunohistochemistry staining of PVR-overexpressing 293T cells with PVR antibody (*left*) vs. control IgG antibody (*right*).

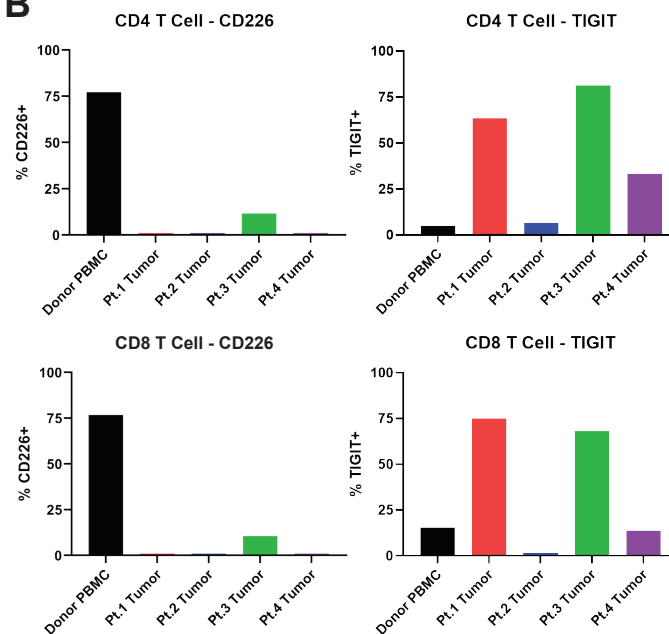


**Supplemental Figure 2. *NECTIN2* and *PVR* expression were associated with poor overall survival in HPV-positive HNSCC. (A)** Heatmap of Z scores (standard deviation from mean; key, *right*) for expression of 48 functionally characterized inhibitory immune checkpoints, measured in RNA-Seq data from the TCGA HPV-positive HNSCC cohort (N = 72). Estimated hazard ratios (HR; *far right*) for associations between expression of indicated genes (*far left*) and overall survival, calculated by univariable Cox proportional hazards model. **(B)** and **(C)** Kaplan-Meier curve of overall survival for tumors stratified by expression (< vs. ≥ median) of **(B)** *NECTIN2* (*left*) or *PVR* (*right*) or of **(C)** *PDCD1* (PD-1; *left*) or *TIGIT* (*right*) in RNA-Seq data from the TCGA HPV-positive HNSCC cohort (N = 72). P value, log-rank test.

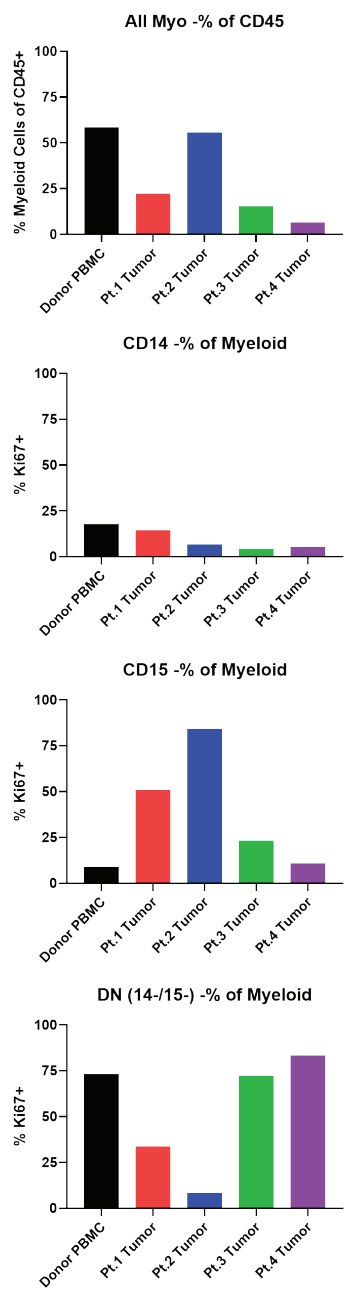
**A**



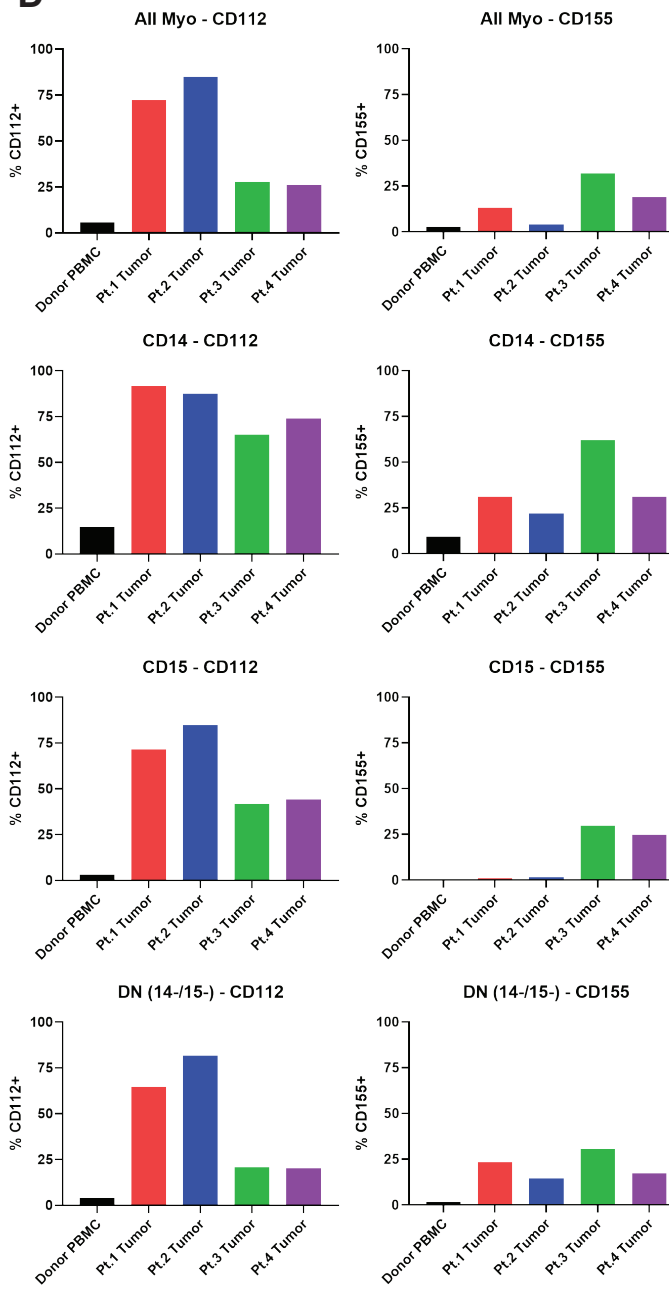
**B**



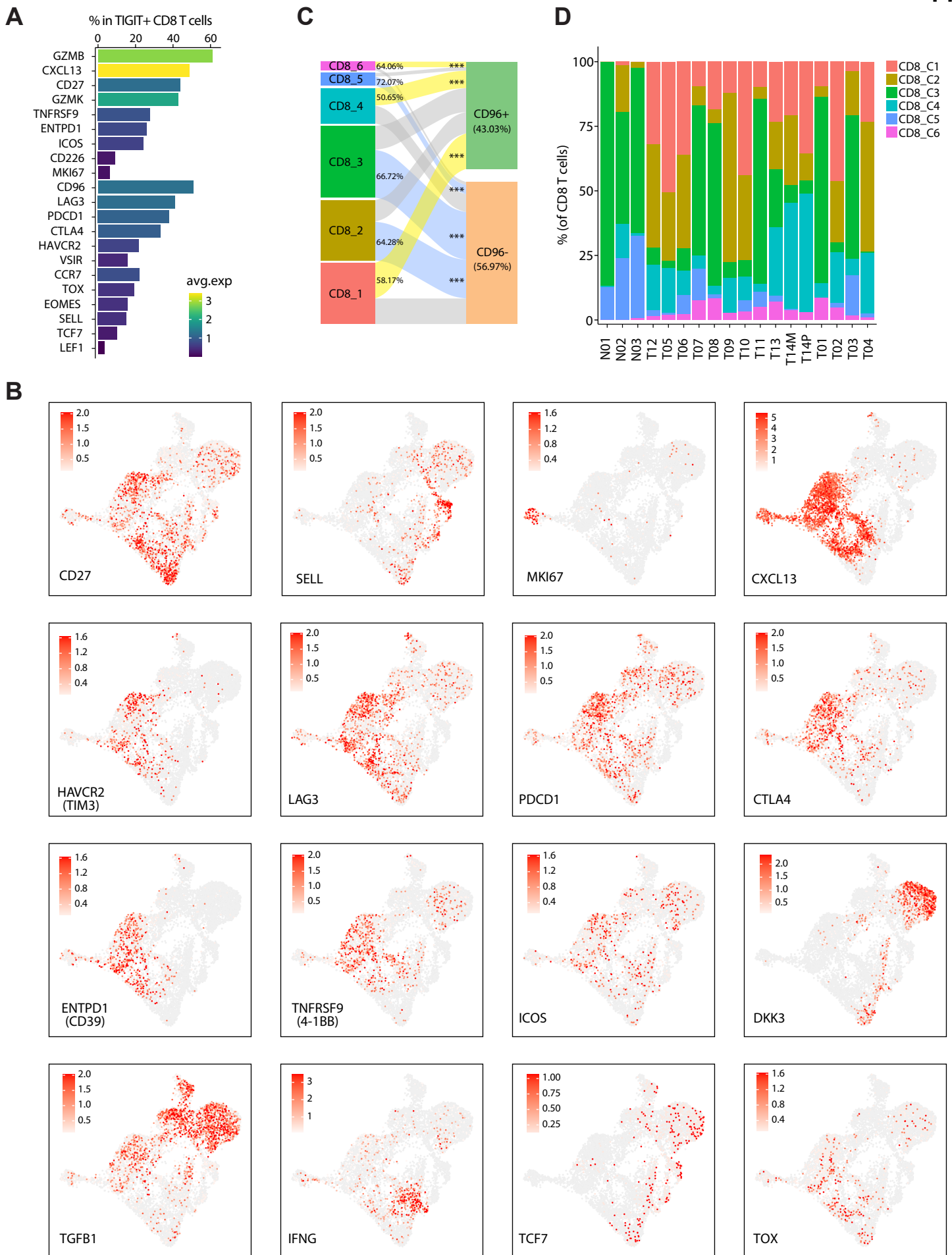
**C**



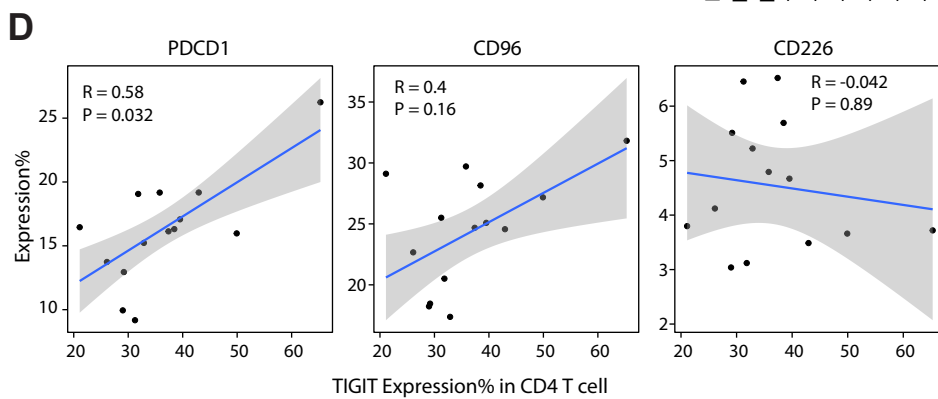
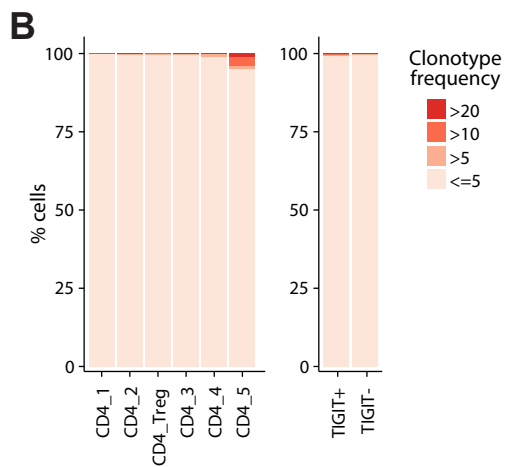
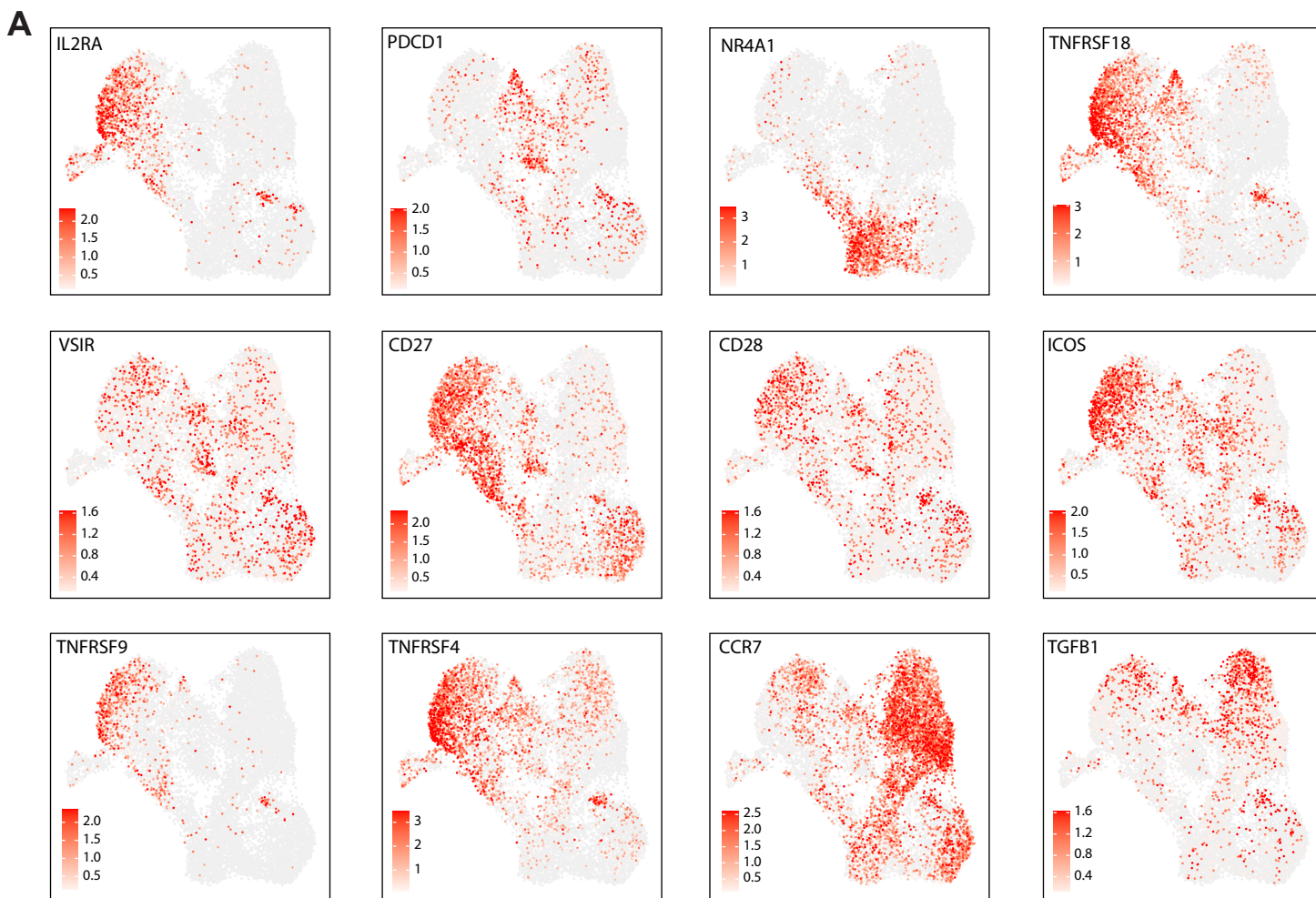
**D**



**Supplemental Figure 3. Flow cytometry confirmed expression of TIGIT family receptors/ligands in the TIME of HPV-positive HNSCC.** Biopsies from four HPV-positive HNSCC patients, obtained prior to therapy, and peripheral blood mononuclear cells (PBMCs) from a healthy donor were dispersed into single cell suspensions and flow cytometry was performed. **(A)** The frequency of CD4<sup>+</sup> T cells and CD8<sup>+</sup> T cells in each sample shown as percentage of total CD45<sup>+</sup> immune cells. **(B)** The percentage of each T cell population expressing CD226 and TIGIT. **(C)** The frequency of all myeloid cells (CD33<sup>+</sup> and/or CD11c<sup>+</sup>) in each sample is shown as percentage total CD45<sup>+</sup> immune cells. The frequencies of the monocyte/macrophage (CD14<sup>+</sup>), neutrophil or PMN-MDSC (CD15<sup>+</sup>), and double negative (DN; CD14<sup>-</sup>/CD15<sup>-</sup>) subsets among total myeloid cells for each sample. **(D)** The percentage of each myeloid cell population expressing TIGIT ligands Nectin-2 and PVR.



**Supplemental Figure 4. TIGIT was highly expressed in antigen-experienced, clonally expanded CD8<sup>+</sup> T cells.** (A) Bar plots showing the average expression level (color of the bar) and percentage of expression (height of the bar) of biologically important genes in *TIGIT* positive CD8<sup>+</sup> T cells. (B) UMAP as in Figure 2C showing the expression of key genes, including *CD27*, *SELL*, *MKI67*, *CXCL13*, *HAVCR2(TIM3)*, *LAG3*, *PDCD1*, *CTLA4*, *ENTPD1(CD39)*, *TNFRSF9 (4-1BB)*, *ICOS*, *DKK3*, *TGFB1*, *IFNG*, *TCF7*, *TOX*. (C) The alluvial plot showing the enrichment of *CD96*-positive and *CD96*-negative cells in each CD8<sup>+</sup> T cell subset. The yellow and blue bands highlight the significant enrichment of *CD96*-positive cells and *CD96*-negative cells, respectively. The proportions of enriched cells (either *CD96*-positive or -negative) were labeled at the left end of the bands while the significance (\*  $P < 0.05$ , \*\*  $P < 0.01$ , \*\*\*  $P < 0.001$ ) were labeled at the right end. The P values for the alluvial plots were calculated by a hypergeometric test for each subset. (D) Stacked bar plot showing the proportion of each CD8<sup>+</sup> T cell subset among all CD8<sup>+</sup> T cells in individual tumor (T) and normal tissue (N) samples. For case 14, samples collected from the primary (P) and a metastatic (M) tumor were analyzed.

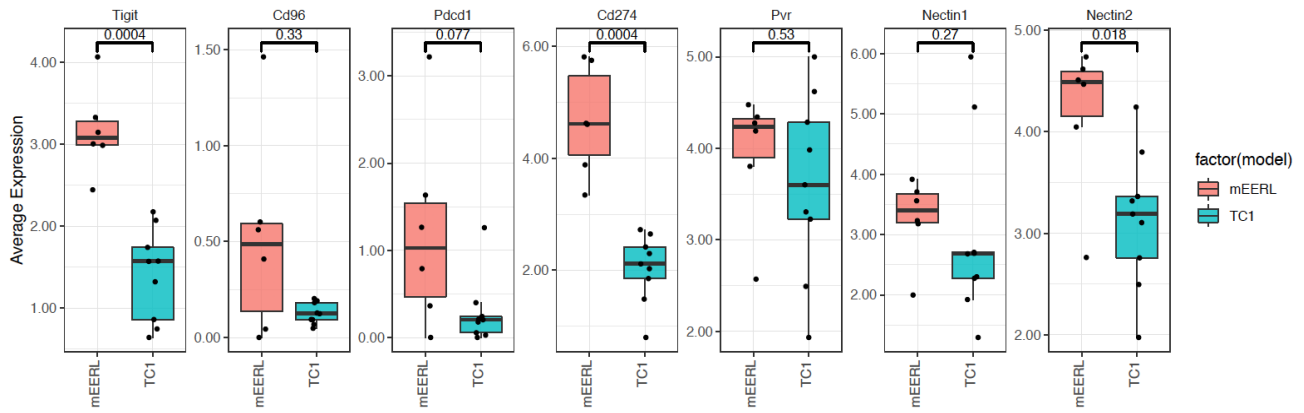




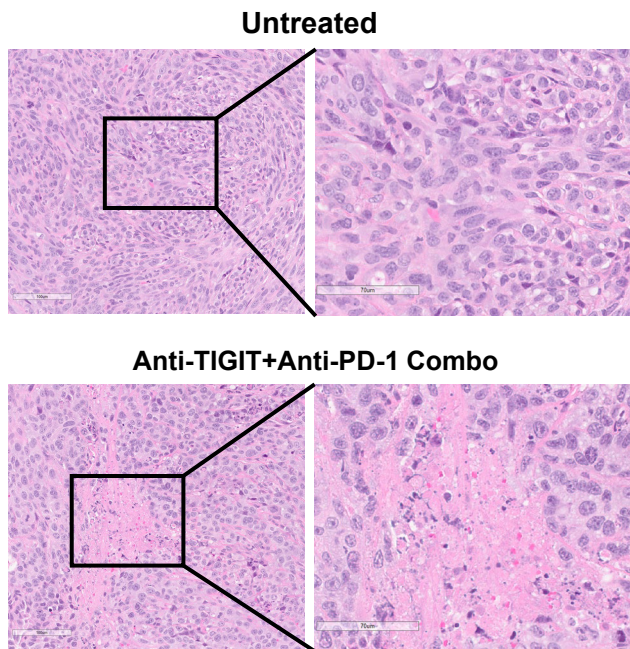
**Supplemental Figure 5. *TIGIT* was highly enriched in T regulatory cells (Tregs).**

(A) UMAP as in Figure 3A showing the expression of key genes, including *IL2RA*, *PDCD1*, *NR4A1*, *TNFRSF18*, *VSIR*, *CD27*, *CD28*, *ICOS*, *TNFRSF9*, *TNFRSF4*, *CCR7*, *TGFB1*. (B) Stacked bar plot showing TCR clonal expansions in each CD4<sup>+</sup> T cell subset and in *TIGIT*-positive or -negative CD4<sup>+</sup> T cells. (C) Stacked bar plot showing the proportion of each CD4<sup>+</sup> T cell subset among all CD4<sup>+</sup> T cells in individual tumor (T) and normal tissue (N) samples. For case 14, samples collected from the primary (P) and a metastatic (M) tumor were analyzed. (D) Spearman correlation of *TIGIT* expression level in CD4<sup>+</sup> T cells with levels of *PDCD1/CD96/CD226* in CD4<sup>+</sup> T cells. Each dot represents a primary tumor sample. The shaded band area represents the 95<sup>th</sup> confidence level interval.

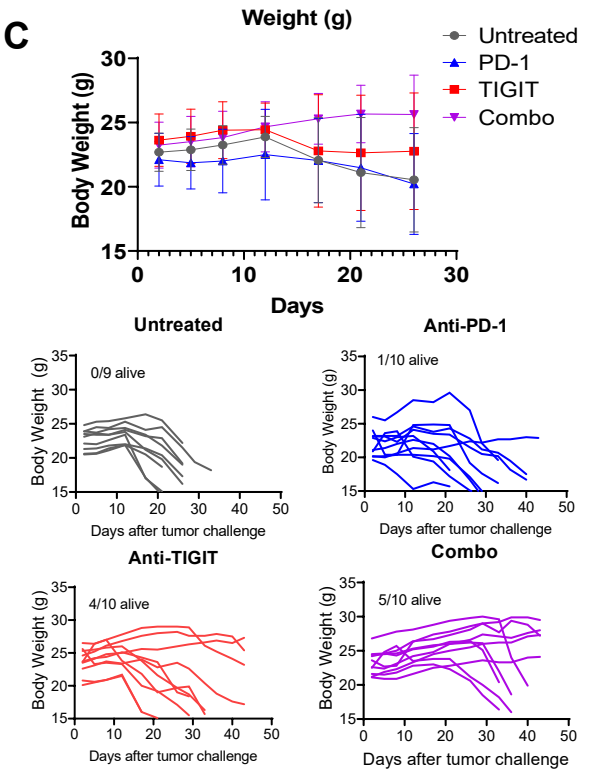
**A**



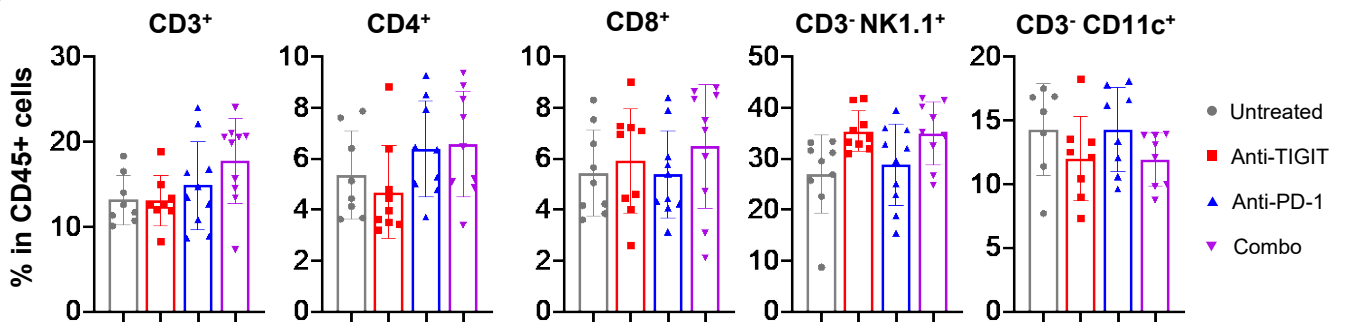
**B**



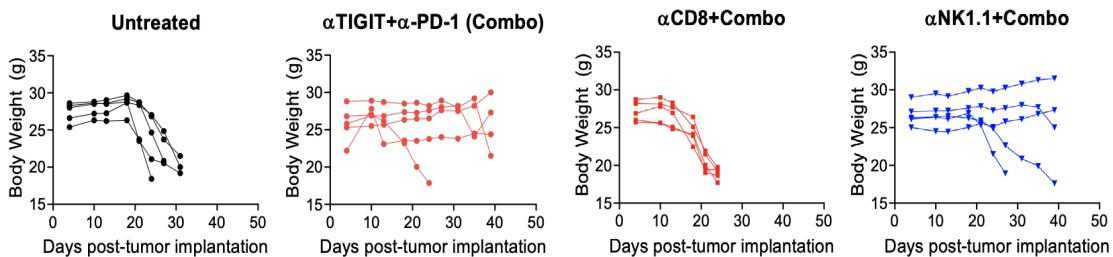
**C**



**D**



**E**



**Supplemental Figure 6. Dual TIGIT and PD-1 blockade in the mEER model generated anti-tumor effects.** (A) RNA sequencing analysis of two immune-competent orthotopic mouse HPV-positive tumors: mEER subcutaneous (mEER SC), mEER sublingual or oral-tongue (mEER-SL), and TC-1 tumors. Total RNA from respective tissue that includes tumor cells and immune cell infiltrates was subjected to RNA-Seq analysis. Key TIGIT and PD1 receptors/ligands levels were compared. (B) Hematoxylin and eosin (H&E)-stained sections from mice tumors with combination treatment (bottom panel) and without (top panel), showing tumor cell lysis and necrosis. (C) Change in body weight of syngeneic mice bearing mEER oral (tongue) tumors without or with immunotherapy treatments. (D) Frequencies of total tumor-infiltrating T cells (CD3<sup>+</sup>), CD4<sup>+</sup> T cells, CD8<sup>+</sup> T cells, NK cells (CD3<sup>-</sup> NK1.1<sup>+</sup>), and dendritic cells (CD3<sup>-</sup> CD11c<sup>+</sup>) on day 19 following tumor implantation. Data are shown as mean +/- SD, statistical significance was calculated using one-way ANOVA with Turkey multiple paired comparisons post-hoc test. (E) Change in body weight of syngeneic mice bearing mEER oral (tongue) tumors without treatment, with combination immunotherapy treatment, with combination immunotherapy treatment and CD8<sup>+</sup> T cell depletion, or with combination immunotherapy treatment and NK cell depletion.