

Longitudinal study of DNA methylation and epigenetic clocks prior to and following test-confirmed COVID-19 and mRNA vaccination

SUPPLEMENTARY MATERIALS

Alina PS Pang^{1#}, Albert T. Higgins-Chen^{2,3#}, Florence Comite^{4,5}, Ioana Raica⁴, Christopher Arboleda⁴, Hannah Went⁶, Tavis Mendez⁶, Michael Schotsaert^{7,8}, Varun Dwaraka⁶, Ryan Smith⁶, Morgan E. Levine⁹, Lishomwa Ndhlovu¹, Michael J. Corley^{1*}

¹ Division of Infectious Diseases, Department of Medicine, Weill Cornell Medicine, New York, NY, USA

²Department of Psychiatry, Yale University School of Medicine, New Haven, CT, USA

³VA Connecticut Healthcare System, West Haven, CT, USA

⁴Comite Center for Precision Medicine & Health, New York, NY, USA

⁵Lenox Hill Hospital/Northwell, New York, NY, USA

⁶TruDiagnostic, Lexington, KY, USA

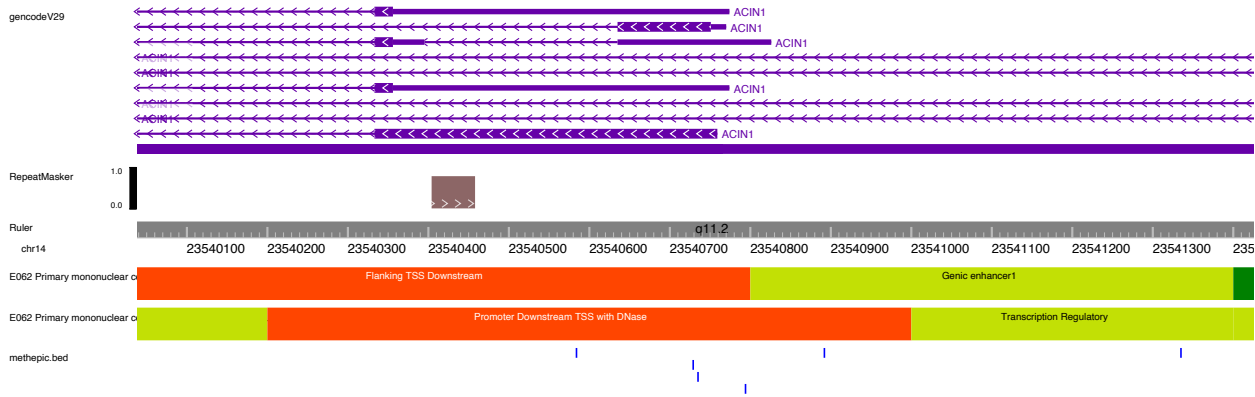
⁷Department of Microbiology, Icahn School of Medicine at Mount Sinai, New York, NY, USA

⁸Global Health and Emerging Pathogens Institute, Icahn School of Medicine at Mount Sinai, New York, NY, USA

⁹Department of Pathology, Yale University School of Medicine, New Haven, CT, USA

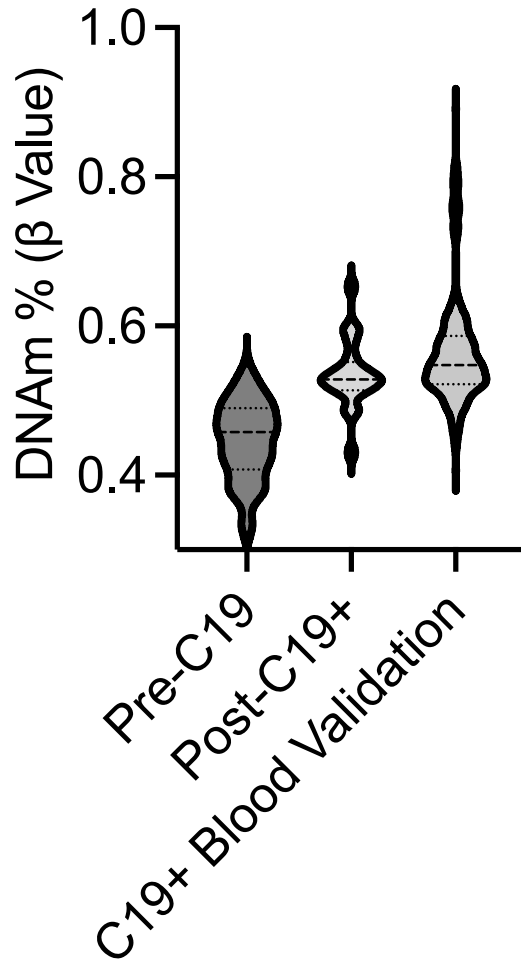
#Authors Contributed Equally

Supplementary Figure S2. Gene promoter transcription start site regulatory region of the apoptotic chromatin condensation inducer 1 (*ACIN1*)

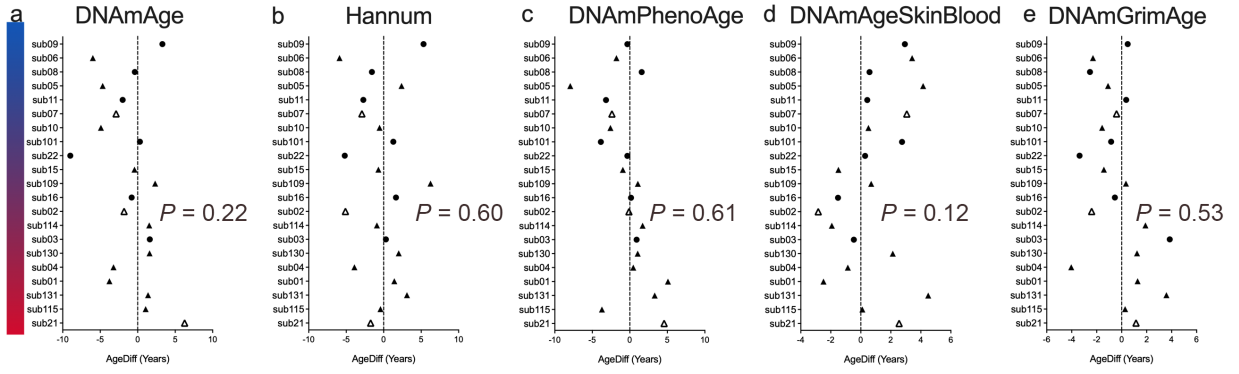


Supplementary Figure S3. Validation of cg10846936 in blood from 407 COVID-19 participants obtained from GEO GSE168739.

***CARD14* (cg10846936)**

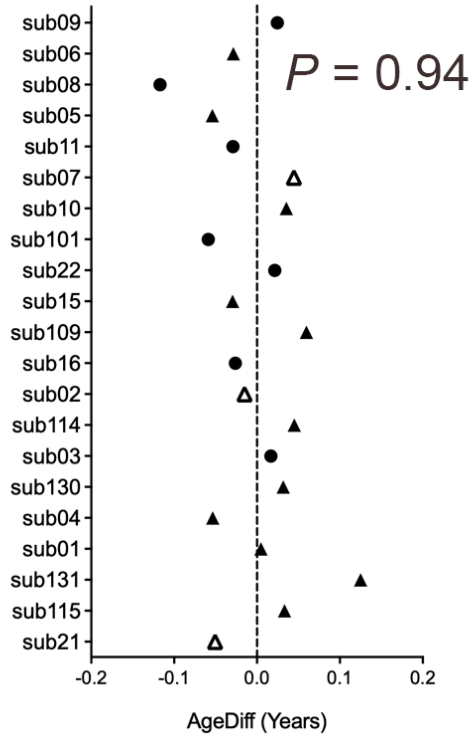


Supplementary Figure S4

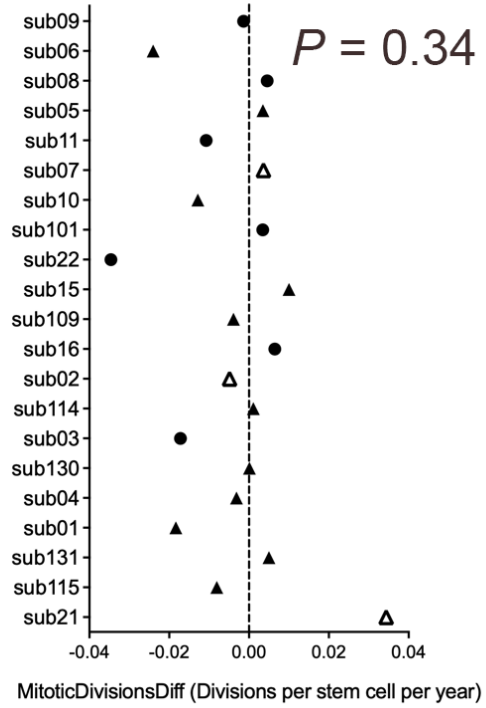


Supplementary Figure S5

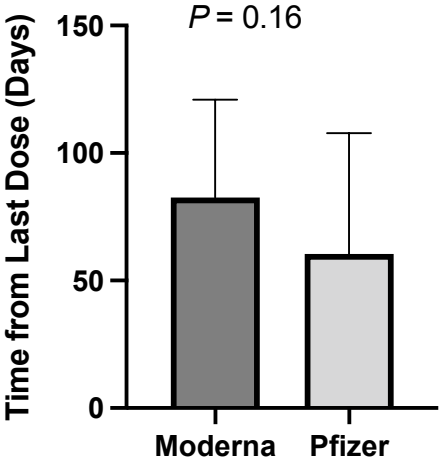
DuneinPoAm45



epiTOC

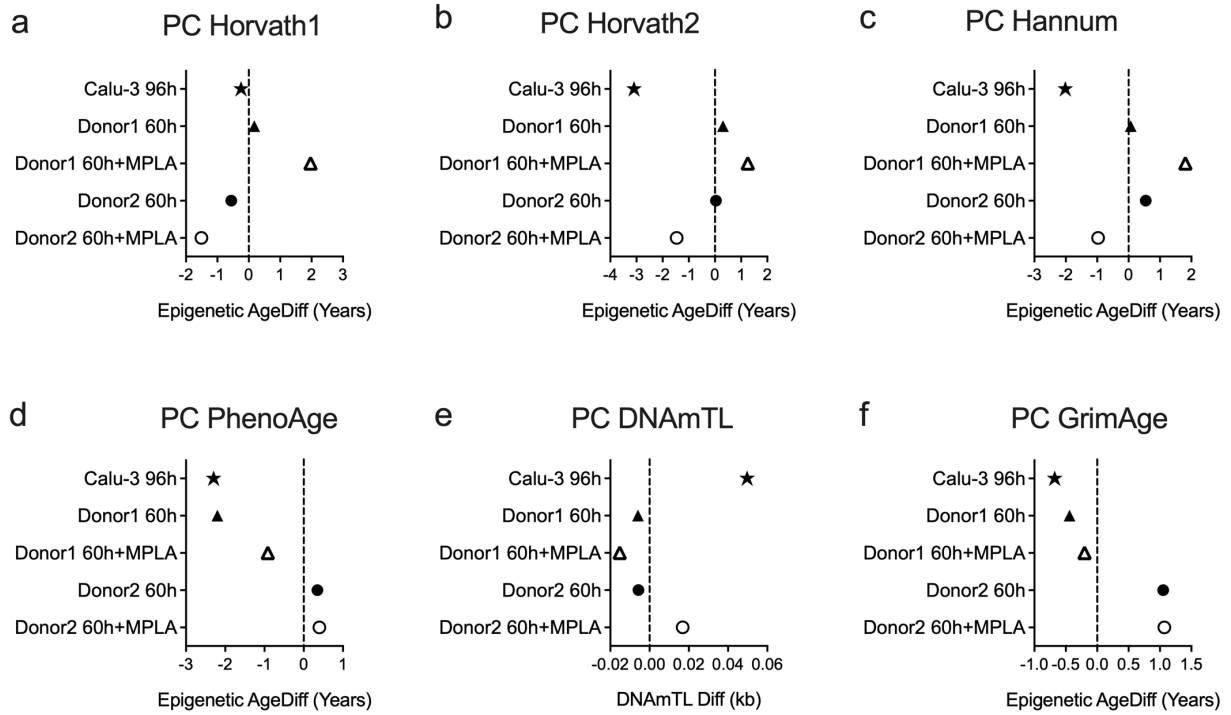


Supplementary Figure S6.



Supplementary Figure S7.

PC-based epigenetic age estimates in Calu-3 and Human Donor PBMC exposed to SARS-CoV-2 *in vitro*.



Supplementary Figure S8.

Validation of epigenetic age estimates in blood from participants at pre- and post-COVID-19 timepoints.

