

1 Comparison of Saliva and Mid-Turbinate Swabs for Detection of COVID-  
2 19

3  
4 Jianyu Lai, B.Med., M.P.H.<sup>a,b</sup>, Jennifer German, Ph.D.<sup>b</sup>, Filbert Hong, Ph.D.<sup>b</sup>, S.-H. Sheldon Tai,  
5 Ph.D.<sup>b</sup>, Kathleen M. McPhaul, Ph.D., M.P.H.<sup>b</sup>, Donald K. Milton, M.D., Dr.P.H.<sup>b</sup> for the  
6 University of Maryland StopCOVID Research Group\*

7  
8 <sup>a</sup> Department of Epidemiology and Biostatistics, University of Maryland School of Public  
9 Health, College Park, Maryland, USA

10 <sup>b</sup> Public Health Aerobiology and Biomarker Laboratory, Institute for Applied Environmental  
11 Health, University of Maryland School of Public Health, College Park, Maryland, USA

12  
13  
14 \* Dr. Donald K. Milton, University of Maryland School of Public Health, 4200 Valley Drive,  
15 College Park, MD 20742 email: [dmilton@umd.edu](mailto:dmilton@umd.edu); phone: 301-405-0389 (Alternate: Dr. Filbert  
16 Hong, at the same address, email [fhong@umd.edu](mailto:fhong@umd.edu), phone: 301-405-4081)

17  
18  
19 Key Words: COVID-19; SARS-CoV-2; saliva; mid-turbinate swab; polymerase chain reaction

20  
21 Running Title: Saliva Versus MTS for COVID-19 Detection

22  
23 Key Points:

- 24
- 25 • Saliva is more sensitive in detecting symptomatic cases of COVID-19 than MTS early in  
the course of infection.
  - 26 • Saliva performs best in the pre-symptomatic period.
  - 27 • Saliva and MTS demonstrated high agreement making saliva a suitable and cost-effective  
28 COVID-19 screening tool.

29 Abstract

30

31 **Background:** Saliva is an attractive sample for detecting SARS-CoV-2 because it is easy to  
32 collect and minimally invasive. However, contradictory reports exist concerning the sensitivity  
33 of saliva versus nasal swabs.

34

35 **Methods:** We recruited and followed close contacts of COVID-19 cases for up to 14 days from  
36 their last exposure and collected self-reported symptoms, mid-turbinate swabs (MTS) and saliva  
37 every two or three days. Ct values and frequency of viral detection by MTS and saliva were  
38 compared. Logistic regression was used to estimate the probability of detection by days since  
39 symptom onset for the two sample types.

40

41 **Results:** We enrolled 58 contacts who provided a total of 200 saliva and MTS sample pairs; 14  
42 contacts (13 with symptoms) had one or more positive samples. Overall, saliva and MTS had  
43 similar rates of viral detection ( $p=0.78$ ). Although Ct values for saliva were significantly greater  
44 than for MTS ( $p=0.014$ ), Cohen's Kappa demonstrated substantial agreement ( $\kappa=0.83$ ).  
45 However, sensitivity varied significantly with time relative to symptom onset. Early in the course  
46 of infection (days -3 to 2), saliva had 12 times (95%CI: 1.2, 130) greater likelihood of detecting  
47 viral RNA compared to MTS. After day 2, there was a non-significant trend to greater sensitivity  
48 using MTS samples.

49

50 **Conclusion:** Saliva and MTS specimens demonstrated high agreement, making saliva a suitable  
51 alternative to MTS nasal swabs for COVID-19 detection. Furthermore, saliva was more sensitive  
52 than MTS early in the course of infection, suggesting that it may be a superior and cost-effective  
53 screening tool for COVID-19.

54

## 55 Introduction

56 The U.S. Centers for Disease Control and Prevention (CDC) recommend the use of upper  
57 respiratory specimens, including but not limited to nasopharyngeal, mid-turbinate nasal, anterior  
58 nasal and saliva specimens for the initial diagnosis of COVID-19 [1]. Although nasopharyngeal  
59 swabs (NPS) are considered to be the standard for the detection of COVID-19 by most  
60 researchers, collection requires the use of trained professionals, can cause discomfort to the  
61 patients, and may pose greater risks to healthcare workers during sample collection [1–4]. Mid-  
62 turbinate swabs (MTS) are sometimes used as an alternative to NPS in an effort to reduce patient  
63 discomfort and occupational exposures to healthcare workers [4–6]. Compared to swab-based  
64 collection, saliva is even less invasive, more affordable, and can be self-collected with minimal  
65 or no supervision [1,7,8].

66  
67 Existing studies focusing on the sensitivity of NPS compared to MTS, and NPS compared to  
68 saliva have produced contradictory results [2,4,9–11]. Few studies directly compare saliva and  
69 MTS specimens. Previous studies demonstrated that pre-symptomatic transmission results in  
70 higher secondary attack rates for both symptomatic and asymptomatic transmission [12,13].  
71 However, most of the existing studies only looked at detection of symptomatic cases after  
72 symptom onset [2,4,9,10] and few looked at detection sensitivity starting with the pre-  
73 symptomatic period. Therefore, a study that conducts a direct comparison of MTS and saliva,  
74 including an assessment of sensitivity over time (starting during the pre-symptomatic period) is  
75 critical to identifying optimally sensitive methods for early detection and effective control of  
76 SARS-CoV-2 transmission.

77  
78 The purpose of this study was to compare the sensitivity of MTS and saliva specimens for  
79 detecting SARS-CoV-2 by actively following close contacts of COVID-19 cases and collecting  
80 MTS and saliva samples for real-time reverse transcription polymerase chain reaction (RT-PCR)  
81 during their post-exposure quarantine period.

## 83 Methods

### 84 *Study population*

85 We analyzed MTS and saliva sample data from individuals who reported close contact with  
86 confirmed COVID-19 cases as part of the University of Maryland StopCOVID study [14] from  
87 May 2020 to April 2021.

### 89 *Questionnaire and sample collection*

90 Participants were followed every two or three days for up to 14 days from their last exposure or  
91 until SARS-CoV-2 was detected in their samples. If one or more of their screening samples  
92 became positive, results were confirmed by an appropriate clinical diagnostic test and they were  
93 recruited to participate in the exhaled breath aspect of the study that also involved the collection  
94 of saliva and MTS [14]. On each day of sample collection, participants answered an online  
95 questionnaire to update their current symptoms and medications. For those who reported having  
96 any symptom, they also reported their symptom onset date (i.e., “When did you begin to feel  
97 sick?”).

98  
99 The symptoms checklist in the baseline and follow-up questionnaires, as previously described  
100 [14], included runny nose, stuffy nose, sneezing, sore throat, earache, malaise, headache, muscle

101 and/or joint ache, sweat/feverish/chills, nausea, loss of appetite, vomiting, abdominal pain or  
102 diarrhea, chest tightness, shortness of breath, and cough. Participants self-reported for each of  
103 these 16 symptoms on a scale of 0 to 3 (0 = “no symptoms,” 1 = “just noticeable,” 2 = “clearly  
104 bothersome from time to time, but didn’t stop me from participating in activities,” 3 = “quite  
105 bothersome most or all of the time and stopped me from participating in activities”).

106  
107 For saliva collection, participants were instructed to not eat or drink 30 minutes prior to the visit  
108 and then collect approximately 0.5-1 mL of saliva drooled into a plastic collection tube. For  
109 MTS collection, trained clinical staff inserted a mid-turbinate swab approximately 1.5-2 inches  
110 into one of the participants’ nostrils, rotated once, and then withdrawn. This procedure was  
111 repeated in the other nostril for a total of two MTS per participant per visit.

### 112 113 *Laboratory analyses*

114 Saliva samples were processed using the SalivaDirect method [8] as previously described [14].  
115 Briefly, 50  $\mu$ L of individual saliva samples were treated with Proteinase K (New England  
116 Biolabs), heated at 95°C for 5 minutes, and kept at 4°C. MTS from both nostrils were combined  
117 and processed as previously described [14]. Briefly, total nucleic acid was extracted from 200  $\mu$ L  
118 of MTS with MagMax Pathogen RNA/DNA Kit (Applied Biosystems) on KingFisher Duo Prime  
119 (Thermo Fisher Scientific), following the manufacturers’ protocols. The sample was eluted in 50  
120  $\mu$ L of Elution Buffer and kept at 4 °C. MS2 phage was spiked in each heat-treated saliva sample  
121 and extraction to control for extraction and PCR failure. RT-PCR was set up on the same day;  
122 each reaction consisted of 1X TaqPath 1-Step Master Mix, No ROX, 1X TaqPath COVID-19  
123 Real Time PCR Assay Multiplex (both from Thermo Fisher Scientific), and 10  $\mu$ L of heat-  
124 treated saliva or eluted nucleic acids. Each PCR plate contained a positive control provided in the  
125 TaqPath COVID-19 Combo Kit (Thermo Fisher Scientific) and a no template control. A positive  
126 sample was defined as having Ct (cycle threshold) values < 40 for at least two out of three  
127 SARS-CoV-2 targets (ORF1ab, N gene, and S gene)[15]. The average Ct values of all positive  
128 targets were used in the following analyses.

### 129 130 *Statistical analyses*

131 We analyzed only paired same-day saliva and MTS samples to ensure the comparability of the  
132 two samples. Group comparisons were made between participants having a positive result for  
133 either sample and those with both samples being negative. Continuous variables (age and BMI)  
134 were compared using t-test, and categorical variables were compared using Chi-square test (sex  
135 and chronic respiratory illness) and Fisher’s exact test (age group, race, and ever smoker).

136  
137 To compare the Ct values from saliva and MTS, we conducted paired t-test and Bland-Altman  
138 analysis, and calculated the coefficient of determination (i.e., R squared from linear regression)  
139 and Pearson correlation coefficient. The Chi-square test was used to explore the relationship  
140 between detection and sample types. Cohen’s Kappa was calculated to demonstrate the degree of  
141 agreement between the two sample types.

142  
143 For participants with a positive saliva or MTS sample, we used a generalized additive logistic  
144 model [16] to estimate and plot the probability of having a positive result by days since symptom  
145 onset for the two sample types. We also created a plot using the LOESS (locally weighted  
146 smoothing) method with 95% confidence interval for the change of Ct values by days since

147 symptom onset for the two sample types. Logistic regression was used to estimate the relative  
148 odds of detection of SARS-CoV-2 in saliva over specified intervals since symptom onset.

149

150 All the analyses were carried out using RStudio and R (version 4.0.4) [17].

151

### 152 *Ethics statement*

153 This study was approved by the University of Maryland Institutional Review Board and the  
154 Human Research Protection Office of the Department of the Navy. Electronically signed  
155 informed consent was obtained from all participants and questionnaire data were collected and  
156 stored with REDCap [18].

157

### 158 *Results*

159 We enrolled 58 individuals with known close contact with an active COVID-19 case. Contacts  
160 provided a total of 200 saliva and MTS pairs. The number of days of sample collection per  
161 participant ranged from one to seven. Among the contacts, 14 (24%) had at least one positive  
162 sample including 11 with both positive saliva and MTS samples over the course of follow-up.  
163 One contact had only positive saliva on 3 out of 3 samples (on days -3, 0, and 1 post symptom  
164 onset) and 2 had only positive MTS samples; one was positive on 2 of 2 swabs (on days 7 and  
165 10) and one on 1 of 5 swabs (day 21, negative on days 14, 17, 19, and 24). Most of the positive  
166 participants (92.9%) were symptomatic, whereas only one (2.3%) participant from the test  
167 negative group reported symptoms. Symptomatic participants were enrolled -3 to 14 days since  
168 symptom onset and gave samples for up to 24 days from onset of symptoms. Symptoms were  
169 mild across the follow-up period. One participant had an oral temperature  $\geq 38$  °C at the time of  
170 sampling; three in total had temperatures  $\geq 37.8$  °C, and six in total had temperatures  $\geq 37.5$  °C;  
171 all were in the positive group. No other significant differences were identified between the  
172 positive and negative groups (Table 1).

173

### 174 *Viral RNA detection in and agreement between saliva and MTS*

175 Among 200 pairs of saliva and MTS samples we detected viral RNA in 32 (16%) of the saliva  
176 and 29 (14.5%) of the MTS samples. The frequency of detection was similar for both sample  
177 types ( $p=0.781$ ) (Table S1). Cohen's Kappa demonstrated substantial agreement ( $\kappa=0.83$ ) with  
178 26 (14%) positive and 165 (82.5%) negative sample pairs (Table 2). The 14 participants who  
179 became positive by either sample type during the follow-up period provided 41 saliva-MTS  
180 sample pairs, among which 71% of MTS and 78% of saliva samples were positive (Table S2),  
181 without respect to time since symptom onset. When focusing on positive participants, however,  
182 the agreement was weak ( $\kappa=0.43$  for all and  $\kappa=0.42$  for those who were symptomatic) (Table S3a  
183 and S3b).

184

### 185 *Comparison of Ct values between saliva and MTS*

186 Each RT-PCR reaction contained 10  $\mu\text{L}$  of heat-treated saliva sample or RNA extracted from  
187 MTS. Assuming no loss in the process, each reaction represented 7.78  $\mu\text{L}$  of saliva sample or 40  
188  $\mu\text{L}$  of the MTS eluate. The Ct values for paired samples were highly correlated ( $\rho = 0.84$ ,  $r^2 =$   
189  $0.74$ , Figure 1a). The Ct values for saliva were on average slightly but significantly greater than  
190 for MTS samples (mean difference = 0.64,  $p=0.01$ ) among all 58 participants (Figure 1b and  
191 Figure S1), partially reflecting the difference in their input amounts.

192

193 *Relationship between days since symptom onset, sample types and probability of detection*

194 The Ct values among the positive symptomatic participants increased over time (day -3 through  
195 24), indicating decreasing viral load. Saliva tended to have lower Ct values compared to MTS  
196 from days -3 to 1.5, where MTS samples had lower Ct values thereafter (Figure 2A).

197  
198 Among symptomatic participants who had one or more positive saliva or MTS samples, the  
199 probability (sensitivity) of detecting viral RNA in saliva samples was 91% (10/11) from day -3  
200 to day 2 (Table 3), was 89% (16/18) from day 3 through 8, and declined significantly thereafter  
201 (Figure 2B and Figure S2). The probability of detecting virus in MTS samples from day -3  
202 through day 2 was lower 45% (5/11), was 94% (17/18) from day 3 through 8, and then dropped  
203 off again. Early in the course of infection (days -3 through 2) saliva had 12 times the odds of  
204 being positive compared to MTS (Odds ratio = 12, 95% CI: 1.2, 130). Although there was a  
205 trend toward greater sensitivity using MTS than saliva samples after day 2 post onset of  
206 symptoms, the difference was not statistically significant (Table 3).

207  
208 *Asymptomatic case*

209 Only one participant from our study population was an asymptomatic case. They provided one  
210 pair of saliva and MTS samples, both of which were positive, with an average Ct value of 25.8  
211 for MTS and 34.7 for saliva (Table S4).

212  
213  
214 *Discussion*

215 Early in the course of infection, saliva was significantly more sensitive than mid-turbinate nasal  
216 swabs (MTS). We found that the optimal performance of saliva was in the pre-symptomatic  
217 period and was more sensitive than MTS before symptom onset. Several studies have shown that  
218 pre-symptomatic transmission plays a more important role than symptomatic and asymptomatic  
219 transmission in the spread of SARS-CoV-2 [12,13]. Furthermore, saliva tended to have lower Ct  
220 values compared to MTS from the pre-symptomatic period through the first few days post  
221 symptom onset. Together, these findings suggest that saliva may be the preferred sample for  
222 detecting SARS-CoV-2 early during the course of infection.

223  
224 The CDC and the Infectious Disease Society of American recommendations for COVID-19  
225 testing allow MTS, NPS, oral swabs, anterior nasal swabs, and saliva swabs as well as  
226 saliva.[1,19] Some studies have shown differences in the sensitivity between NPS and MTS. In  
227 older, more acutely ill populations, NPS appears to be more sensitive than MTS, especially later  
228 in the course of illness (greater than 7 days) [4,9]. In a study of ambulatory and symptomatic  
229 participants whose ages were more evenly distributed, NPS and MTS swabs were highly  
230 correlated with a mean of 7 days since onset of symptoms [20]. Congrave-Wilson et al., in  
231 agreement with the current study, found that saliva had the highest sensitivity in the first seven  
232 days post COVID-19 onset when using NPS as the reference [2]. Becker et al. compared the  
233 sensitivity of saliva and NPS for detecting COVID-19 in a convalescent cohort 8-56 days since  
234 first symptom and found that NPS performed better [21]. They also showed that saliva was about  
235 30% less sensitive than NPS in a diagnostic cohort, however, days since symptom onset were not  
236 reported, so we cannot make direct comparison with our findings. Finally, a systematic review  
237 by Bastos et al. found that saliva had similar sensitivity to NPS and costs less [11].

238

239 Our findings have implications for improving public acceptance of COVID-19 testing, reducing  
240 the cost of mass COVID-19 screening, and improving the safety of healthcare workers who  
241 conduct testing. These findings are extremely important when considering large-scale screening  
242 of COVID-19 in schools and workplaces. In addition to its higher sensitivity in the early stage of  
243 the disease as demonstrated in our data, saliva has quite a few other advantages that make it an  
244 appealing screening tool. Saliva collection is less invasive and more acceptable to the general  
245 population [7,22]. One of the barriers hindering COVID-19 testing is people's fear of nasal  
246 swabs due to misinformation [23]. Also, the discomfort brought by nasal swabs may also reduce  
247 people's willingness to get tested regularly, especially among children [24,25]. With the use of  
248 saliva, screening in large groups with increased frequency may be more practicable. Saliva is  
249 cheaper than swab-based methods, especially if pooled samples are used [11,26]. Bastos et al.  
250 estimated that when sampling 100,000 individuals, using saliva saved more than \$600,000 in  
251 comparison to using NPS [11]. These cost savings are especially important in the context of low  
252 resource settings.

253  
254 Saliva collection is also safer for healthcare workers (HCWs). Amid the pandemic, one of the  
255 key concerns among HCWs is the occupational exposure to SARS-CoV-2 aerosols during some  
256 medical procedures [27]. The collection of nasal swabs introduces such exposure via the close  
257 interaction between patients and HCWs and by patients' coughing and sneezing as a result of the  
258 procedures [28]. In contrast, saliva is the only upper respiratory specimen suggested by the CDC  
259 that can be self-collected without supervision [1] and hence protects HCWs from directly  
260 contacting the patients when the samples are being collected. Given all these advantages of  
261 saliva compared to NPS, our findings further support the use of saliva for large-scale screening,  
262 especially of pre-symptomatic patients.

263  
264 The current study has several limitations. The contacts enrolled in this study who eventually  
265 tested positive for SARS-CoV-2 developed mild, and in some cases, transient infections. Some  
266 of these mild (low viral titer) infections would not have been detected by less frequent testing  
267 protocols and may not have posed a risk for onward transmission. The sample size of those who  
268 tested positive is relatively small. Only one asymptomatic case was identified in our study so we  
269 could not compare the sensitivity of the two types of samples among asymptomatic COVID-19  
270 cases. The evidence for using saliva to detect asymptomatic cases was mixed in previous studies  
271 [2,10] and further studies are needed to clarify this issue.

272  
273 In conclusion, the use of saliva is preferable for testing pre-symptomatic populations. It is more  
274 acceptable to people, which reduces barrier to testing. It is also more cost effective for  
275 individuals to collect their own saliva rather than using highly trained professionals to collect  
276 NPS and/or MTS. Finally, self-collected saliva samples eliminate the exposure to aerosols  
277 produced by sneezing, coughing and gagging of patients undergoing NPS/MTS.

278  
279

## 280 Funding

281 This work was supported by Prometheus-UMD, sponsored by the Defense Advanced Research  
282 Projects Agency (DARPA) BTO under the auspices of Col. Matthew Hepburn through  
283 agreement N66001-18-2-4015. This work was also supported by the National Institute of Allergy  
284 and Infectious Diseases Centers of Excellence for Influenza Research and Surveillance (CEIRS)

285 Contract Number HHSN272201400008C, and the Centers for Disease Control and Prevention  
286 Contract Number 200-2020-09528. The findings and conclusions in this report are those of the  
287 authors and do not necessarily represent the official position or policy of these funding agencies  
288 and no official endorsement should be inferred.

289  
290 This work was also supported by a grant from the Bill & Melinda Gates Foundation, and a  
291 generous gift from The Flu Lab (<https://theflulab.org>). The funders had no role in study design,  
292 data collection, analysis, decision to publish, or preparation of the manuscript.

293  
294 None of the authors have a potential conflicting interest or funding source.

### 295 296 [Acknowledgements](#)

297 We thank all the other members of the University of Maryland StopCOVID Research Group for  
298 their efforts in recruiting participants and sample collection and processing: Oluwasanmi  
299 Oladapo Adenaiye, Barbara Albert, P. Jacob Bueno de Mesquita, Yi Esparza, Aaron Kassman,  
300 Michael Lutchenkov, Dewansh Rastogi, Maria Schanz, Isabel Sierra Maldonado, Aditya  
301 Srikakulapu, Delwin Suraj, Faith Touré, Rhonda Washington-Lewis, Somayeh Youssefi, Stuart  
302 Weston, Matthew Frieman, Mara Cai, Ashok Agrawala. We also thank Dr. Jamal Fadul and his  
303 clinic in College Park, Maryland, for assistance in recruiting study participants.

304  
305  
306  
307  
308



## 309 References

- 310
- 311 1. Centers for Disease Control and Prevention. Interim Guidelines for Collecting and Handling  
312 of Clinical Specimens for COVID-19 Testing. 2020. Available at:  
313 <https://www.cdc.gov/coronavirus/2019-ncov/lab/guidelines-clinical-specimens.html>.  
314 Accessed 12 October 2021.
- 315 2. Congrave-Wilson Z, Lee Y, Jumarang J, et al. Change in Saliva RT-PCR Sensitivity Over  
316 the Course of SARS-CoV-2 Infection. *JAMA* **2021**; Available at:  
317 <https://doi.org/10.1001/jama.2021.13967>. Accessed 5 September 2021.
- 318 3. Lee RA, Herigon JC, Benedetti A, Pollock NR, Denkinger CM. Performance of Saliva,  
319 Oropharyngeal Swabs, and Nasal Swabs for SARS-CoV-2 Molecular Detection: a  
320 Systematic Review and Meta-analysis. *Journal of Clinical Microbiology* **59**:e02881-20.
- 321 4. Jamal AJ, Mozafarihashjin M, Coomes E, et al. Sensitivity of midturbinate versus  
322 nasopharyngeal swabs for the detection of severe acute respiratory syndrome coronavirus 2  
323 (SARS-CoV-2). *Infect Control Hosp Epidemiol* :1–3.
- 324 5. Chu CY, Marais G, Opperman C, et al. Performance of saliva and mid-turbinate swabs for  
325 detection of the beta variant in South Africa. *Lancet Infect Dis* **2021**; **21**:1354.
- 326 6. Yp T, R J, B H, et al. Swabs Collected by Patients or Health Care Workers for SARS-CoV-2  
327 Testing. *The New England journal of medicine* **2020**; **383**. Available at:  
328 <https://pubmed.ncbi.nlm.nih.gov/32492294/>. Accessed 25 October 2021.
- 329 7. Tan SH, Allicock O, Armstrong-Hough M, Wyllie AL. Saliva as a gold-standard sample for  
330 SARS-CoV-2 detection. *The Lancet Respiratory Medicine* **2021**; **9**:562–564.
- 331 8. Vogels CBF, Watkins AE, Harden CA, et al. SalivaDirect: A simplified and flexible platform  
332 to enhance SARS-CoV-2 testing capacity. *Med* **2021**; **2**:263-280.e6.
- 333 9. Pinninti S, Trieu C, Pati SK, et al. Comparing Nasopharyngeal and Mid-Turbinate Nasal  
334 Swab Testing for the Identification of SARS-CoV-2. *Clin Infect Dis* **2020**; Available at:  
335 <https://www.ncbi.nlm.nih.gov/pmc/articles/PMC7337631/>. Accessed 19 March 2021.
- 336 10. Teo AKJ, Choudhury Y, Tan IB, et al. Saliva is more sensitive than nasopharyngeal or nasal  
337 swabs for diagnosis of asymptomatic and mild COVID-19 infection. *Scientific Reports* **2021**;  
338 **11**:3134.
- 339 11. Bastos ML, Perlman-Arrow S, Menzies D, Campbell JR. The Sensitivity and Costs of  
340 Testing for SARS-CoV-2 Infection With Saliva Versus Nasopharyngeal Swabs : A  
341 Systematic Review and Meta-analysis. *Ann Intern Med* **2021**; **174**:501–510.
- 342 12. Bender JK, Brandl M, Höhle M, Buchholz U, Zeitlmann N. Analysis of Asymptomatic and  
343 Presymptomatic Transmission in SARS-CoV-2 Outbreak, Germany, 2020. *Emerg Infect Dis*  
344 **2021**; **27**. Available at: [https://wwwnc.cdc.gov/eid/article/27/4/20-4576\\_article.htm](https://wwwnc.cdc.gov/eid/article/27/4/20-4576_article.htm).  
345 Accessed 8 October 2021.

- 346 13. Qiu X, Nergiz AI, Maraolo AE, Bogoch II, Low N, Cevik M. The role of asymptomatic and  
347 pre-symptomatic infection in SARS-CoV-2 transmission—a living systematic review.  
348 *Clinical Microbiology and Infection* **2021**; 27:511–519.
- 349 14. Adenaiye OO, Lai J, de Mesquita PJB, et al. Infectious SARS-CoV-2 in Exhaled Aerosols  
350 and Efficacy of Masks During Early Mild Infection. *Clin Infect Dis* **2021**; :ciab797.
- 351 15. ThermoFisher Scientific. TaqPath™ COVID-19 Combo Kit and TaqPath™ COVID-19  
352 Combo Kit Advanced\* Instructions for Use. Available at:  
353 <https://www.fda.gov/media/136112/download>. Accessed 24 November 2021.
- 354 16. Hastie T, Tibshirani R. Generalized additive models for medical research. *Stat Methods Med*  
355 *Res* **1995**; 4:187–196.
- 356 17. R Core Team. R: A Language and Environment for Statistical Computing. Vienna, Austria:  
357 R Foundation for Statistical Computing, 2021. Available at: <https://www.R-project.org/>.
- 358 18. Harris PA, Taylor R, Minor BL, et al. The REDCap consortium: Building an international  
359 community of software platform partners. *Journal of Biomedical Informatics* **2019**;  
360 95:103208.
- 361 19. Hanson KE, Caliendo AM, Arias CA, et al. The Infectious Diseases Society of America  
362 Guidelines on the Diagnosis of COVID-19: Molecular Diagnostic Testing. *Clinical*  
363 *Infectious Diseases* **2021**; :ciab048.
- 364 20. Tu Y-P, Jennings R, Hart B, et al. Swabs Collected by Patients or Health Care Workers for  
365 SARS-CoV-2 Testing. *N Engl J Med* **2020**; 383:494–496.
- 366 21. Becker D, Sandoval E, Amin A, et al. Saliva is less sensitive than nasopharyngeal swabs for  
367 COVID-19 detection in the community setting. *medRxiv* **2020**; :2020.05.11.20092338.
- 368 22. Byrne RL, Kay GA, Kontogianni K, et al. Saliva offers a sensitive, specific and non-invasive  
369 alternative to upper respiratory swabs for SARS-CoV-2 diagnosis. *medRxiv*  
370 **2020**; :2020.07.09.20149534.
- 371 23. Yangchen S, Ha S, Assan A, Tobgay T. Factors Influencing COVID-19 Testing: A  
372 Qualitative Study in Bhutan. In Review, 2021. Available at:  
373 <https://www.researchsquare.com/article/rs-885659/v1>. Accessed 9 November 2021.
- 374 24. Clifford V, Curtis N. Saliva testing for severe acute respiratory syndrome coronavirus 2 in  
375 children. *Clinical Microbiology and Infection* **2021**; 27:1199–1201.
- 376 25. Leach AJ, Stubbs E, Hare K, Beissbarth J, Morris PS. Comparison of Nasal Swabs with  
377 Nose Blowing for Community-Based Pneumococcal Surveillance of Healthy Children.  
378 *Journal of Clinical Microbiology* **2008**; 46:2081–2082.
- 379 26. Watkins AE, Fenichel EP, Weinberger DM, et al. Increased SARS-CoV-2 Testing Capacity  
380 with Pooled Saliva Samples. *Emerg Infect Dis* **2021**; 27.

- 381 27. Nicholson PJ, Sen D. Healthcare workers and protection against inhalable SARS-CoV-2  
382 aerosols. *Occupational Medicine* **2021**; 71:118–120.
- 383 28. Qian Y, Zeng T, Wang H, et al. Safety management of nasopharyngeal specimen collection  
384 from suspected cases of coronavirus disease 2019. *Int J Nurs Sci* **2020**; 7:153–156.
- 385  
386

387 Tables

388

389 Table 1. Characteristics of the study population

	Never positive	Positive for MTS or saliva	All participants	
Number of participants	44	14	58	
Number of sample pairs	159	41	200	
Number of days of sample collection per participant, median (range)	4 (1, 7)	3 (1, 6)	3 (1, 7)	
Female, N (%)	20 (46)	8 (57)	28 (48)	
Age, mean $\pm$ SD	26.5 $\pm$ 15.5	27.3 $\pm$ 13.8	26.7 $\pm$ 15	
Age group, N (%)				
<18	2 (4)	1 (7)	3 (5)	
18-45	38 (86)	11 (79)	49 (84)	
>45	4 (9)	2 (14)	6 (10)	
White, N (%)	30 (68)	11 (79)	41 (71)	
BMI, mean $\pm$ SD	25.6 $\pm$ 4.9	25.2 $\pm$ 4.4	25.5 $\pm$ 4.7	
Chronic respiratory illness <sup>a</sup> , N (%)	17 (39)	5 (36)	22 (38)	
Ever smoker, N (%)	1 (2)	1 (7)	2 (3)	
Ever symptomatic <sup>b</sup> , N (%)	1 (2)	13 (93)	14 (24)	
Symptomatic participants	Days since symptom onset at enrollment, median (range)	2 (-)	3 (-3, 14)	2.5 (-3, 14)
	Overall days since symptom onset of sample collection, median (range)	6.5 (2, 12)	5 (-3, 24)	5 (-3, 24)
	Loss of taste/smell, N (%)	0	2 (15)	2 (14)
	Median upper <sup>c</sup> respiratory symptoms (IQR)	3 (1.2, 6.2)	2 (0, 3)	2 (0.2, 3)
	Median lower respiratory symptoms (IQR)	0 (0, 0)	0 (0, 1)	0 (0, 1)
	Median systemic symptoms (IQR)	0.5 (0, 1.8)	0 (0, 1.2)	0 (0, 1.8)
	Median gastrointestinal symptoms (IQR)	0 (0, 0)	0 (0, 0)	0 (0, 0)
	Temperature, mean Celsius $\pm$ SD	37 $\pm$ 0.3	37.2 $\pm$ 0.5	37.2 $\pm$ 0.4

390 <sup>a</sup> Chronic respiratory illness = volunteers with any Chronic obstructive pulmonary disease,  
 391 Asthma, Other lung diseases.

392 <sup>b</sup> Group comparison, p<0.05.

393   <sup>c</sup> Symptoms at the time of each sample collection visit. Sixteen individual symptoms were rated  
394 from 0 to 3. Systemic (max score of 12) = malaise + headache + muscle/joint ache +  
395 sweats/fever/chills; Gastrointestinal (max score of 12) = loss of appetite + nausea + vomit +  
396 diarrhea; Lower Respiratory (max score of 9) = chest tightness + shortness of breath + cough;  
397 Upper Respiratory (max score of 15) = runny nose + stuffy nose + sneeze + earache + sore  
398 throat.

399

400

401

402 Table 2. Viral RNA detection in paired saliva and MTS samples from all participants (N=58) <sup>a</sup>

<i>Saliva Positive</i>	<i>MTS Positive</i>		<b><i>Total</i></b>
	No	Yes	
No	165	3	168
Yes	6	26	32
<b><i>Total</i></b>	171	29	200

403 <sup>a</sup>  $\kappa=0.83$

404

405 Table 3. Sensitivity of saliva and MTS and relative odds of detection of SARS-CoV-2 in saliva  
406 by day since symptom onset among 13 mildly symptomatic contacts of known cases

<b>Days since symptom onset<sup>a</sup></b>	<b>Saliva Positive/N (Sensitivity %)</b>	<b>MTS Positive/N (Sensitivity %)</b>	<b>Odds Ratio Saliva:MTS</b>	<b>p-value</b>
-3 through 2	10/11 (91)	5/11 (45)	12 (1.2, 130)	0.04
3 through 8	16/18 (89)	17/18 (94)	0.47 (0.037, 6)	0.55
9 through 24	5/11 (45)	6/11 (55)	0.7 (0.13, 3.8)	0.67

407 <sup>a</sup> Days since symptom onset inclusive of the start and end day

408

409 Figure Legends

410

411 Figure 1. Association between Ct values of saliva and MTS samples among 58 participants and  
412 400 samples

413 A. Scatter plot of Ct values of saliva and MTS

414 B. Bland-Altman plot for comparison of saliva and MTS

415

416 Figure 2. The change of Ct values and probability of testing positive by days since symptom  
417 onset. Data are for MTS and saliva samples from 13 participants who provided a total of 40 pairs  
418 of samples and had one or more samples positive for SARS-CoV-2 RNA.

419 A. Change of Ct values by days since symptom onset,

420 B. Probability of being tested positive by days since symptom onset estimated from a generalized  
421 additive logistic model.

422

423

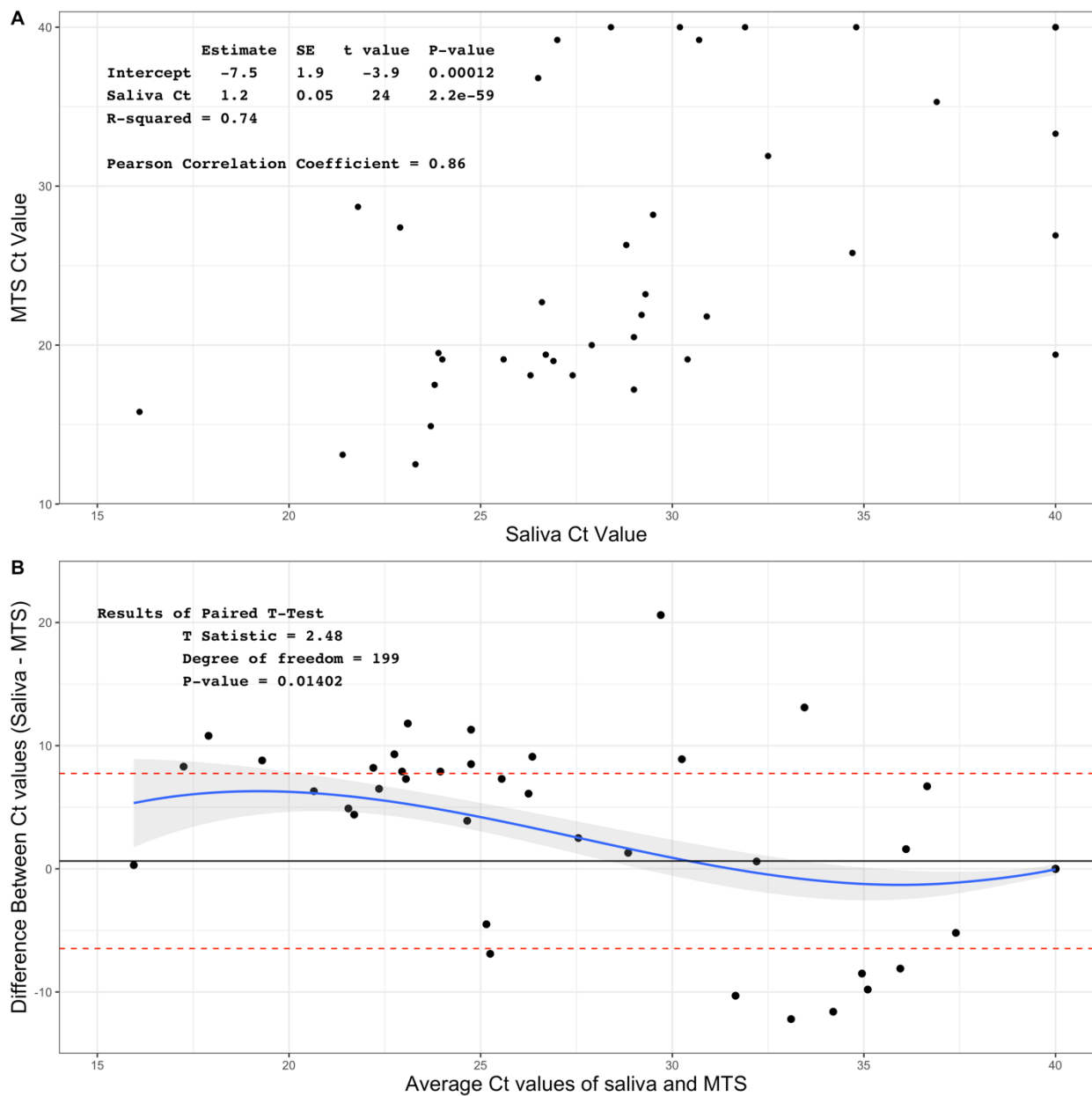
424

425

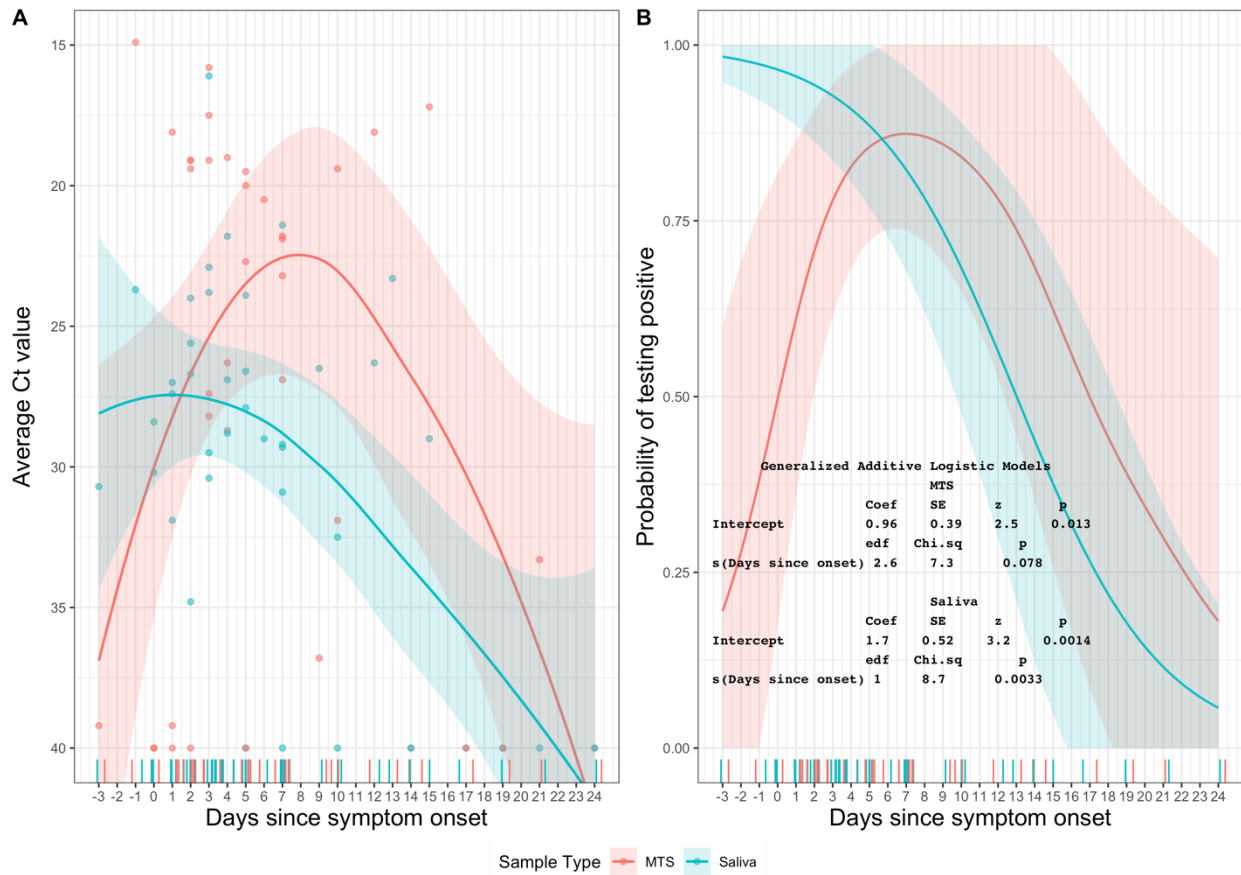
426



427 Figures  
428



429



430  
431  
432  
433