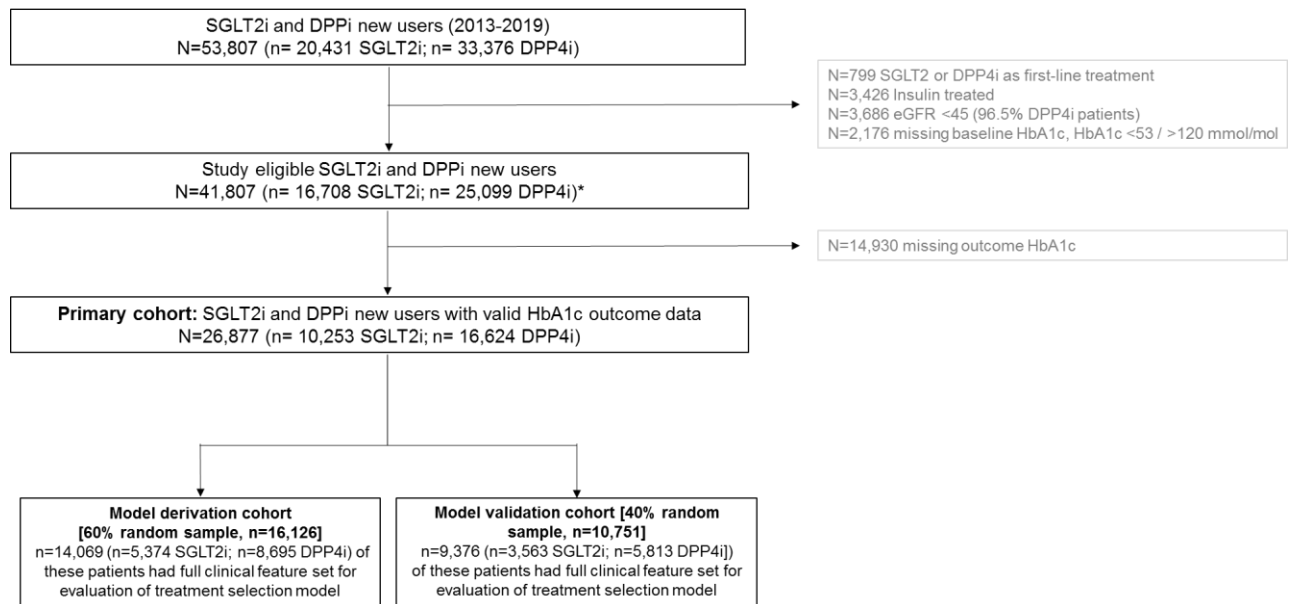


Supplementary material for: Derivation and validation of an algorithm to individualise type 2 diabetes treatment selection with SGLT2-inhibitor and DPP4-inhibitor therapy: prospective cohort study using trial and routine data

Authors: John M Dennis, Katherine G Young, Andrew P McGovern, Bilal A Mateen, Sebastian J Vollmer, Michael D Simpson, William E Henley, Rury R Holman, Naveed A Sattar, Ewan R Pearson, Andrew T Hattersley, Angus G Jones, Beverley M Shields

sFlowchart: CPRD patient flow and inclusion criteria.



Baseline HbA1c defined as the closest HbA1c to drug initiation with -91/+7 days.

*For assessment of 6 month weight change, we followed the same procedures but included all patients with a baseline weight measure (within the 2 years prior to drug initiation) and outcome weight (closest weight to 6 month within 3-15 months, on unchanged glucose-lowering therapy), irrespective of whether they had an outcome HbA1c (n=20,065 [n= 7,842 SGLT2i, n=12,223 DPP4i]). For assessment of treatment discontinuation, we included all patients with either 6 months of follow up time after drug initiation available, or 3 months of follow up time available after their last prescription (to confirm that the drug of interest was discontinued) (n=28,514 [n= 11,092 SGLT2i, n=17,422 DPP4i]), irrespective of whether they had an outcome HbA1c

sTable 1: Baseline clinical characteristics by initiated drug class. Data are mean (SD) unless stated.

a) CPRD routine clinical data (primary cohort, n=26,877)

	DPP4-inhibitor (n=16,624)	SGLT2i (n=10,253)	SMD*
Age (years) [mean SD]	63.9 (10.8)	60.0 (9.2)	0.387
Duration of diabetes (years) [mean SD]	8.0 (5.3)	8.5 (5.1)	0.106
Sex			
Female	6265 (37.7)	3751 (36.6)	0.023
Male	10359 (62.3)	6502 (63.4)	
DPP4i type			
Alogliptin	1957 (11.8)		
Linagliptin	3331 (20.0)		
Saxagliptin	2207 (13.3)		
Sitagliptin	9025 (54.3)		
Vildagliptin	104 (0.6)		
SGLT2i type			
Canagliflozin		1588 (15.5)	
Dapagliflozin		5861 (57.2)	
Empagliflozin		2804 (27.3)	
Number of glucose-lowering drug classes ever prescribed			
1	7355 (44.2)	2198 (21.4)	0.547
2	7024 (42.3)	3187 (31.1)	
3	1901 (11.4)	3027 (29.5)	
4+	344 (2.1)	1841 (18.0)	
Number of current other glucose-lowering drugs			
0	947 (5.7)	286 (2.8)	0.844
1	9702 (58.4)	4117 (40.2)	
2	5770 (34.7)	4701 (45.8)	
3+	205 (1.2)	1149 (11.2)	
Baseline biomarkers (all mean SD)			
HbA1c (mmol/mol)	73.0 (13.4)	76.9 (14.2)	0.285
BMI (kg/m ²)	32.3 (6.4)	34.4 (6.6)	0.312
eGFR (mL/min/1.3 m ²)	83.1 (17.3)	88.8 (14.7)	0.356
HDL-c (mmol/L)	1.2 (0.3)	1.1 (0.3)	0.151
Triglycerides (mmol/L)	2.2 (1.6)	2.4 (1.6)	0.078
ALT (IU/L)	33.7 (52.4)	36.6 (40.2)	0.061
Albumin (g/L)	42.2 (4.0)	42.2 (4.0)	0.014
Bilirubin (µmol/L)	10.0 (5.1)	9.8 (5.0)	0.040
HbA1c outcome			
Outcome HbA1c (mmol/mol) [mean SD]	65.1 (16.1)	65.1 (14.4)	0.001
Month of outcome HbA1c measure	9.2 (3.4)	9.0 (3.5)	0.050

*Standardized mean difference: ≥ 0.1 is a metric for a meaningful imbalance.

b) Clinical trials

	CANTATA-D		CANTATA-D2		EMPA-REG MONO	
	SGLT2-inhibitor (n=705) [Canagliflozin]	DPP4-inhibitor (n=355) [Sitagliptin]	SGLT2-inhibitor (n=359) [Canagliflozin]	DPP4-inhibitor (n=356) [Sitagliptin]	SGLT2-inhibitor (n=505) [Empagliflozin]	DPP4-inhibitor (n=219) [Sitagliptin]
Age (years)	55.2 (9.3)	55.4 (9.5)	56.5 (9.6)	56.6 (9.3)	54.3 (11.6)	55.1 (9.9)
Sex						
Female	382 (54.2)	187 (52.7)	161 (44.8)	151 (43.4)	173 (34.3)	82 (37.4)
Male	323 (45.8)	168 (47.3)	198 (55.2)	205 (57.6)	332 (65.7)	137 (62.6)
HbA1c (mmol/mol)	63.3 (9.9)	63.1 (9.5)	65.1 (9.9)	65.4 (10.0)	68.2 (16.9)	62.2 (8.5)
BMI (kg/m²)	31.9 (6.4)	32.0 (6.1)	31.5 (6.9)	31.7 (6.9)	28.3 (5.5)	28.2 (5.2)
eGFR (mL/min/1.3 m²)	89.3 (18.2)	88.1 (18.8)	87.1 (18.1)	87.7 (20.3)	88.6 (19.2)	87.6 (17.4)
HDL-c (mmol/L)	1.2 (0.3)	1.2 (0.3)	1.2 (0.3)	1.2 (0.3)	1.2 (0.3)	1.3 (0.4)
Triglycerides (mmol/L)	2.1 (1.5)	2.0 (1.1)	2.0 (1.4)	1.9 (1.3)	2.2 (2.4)	2.2 (2.0)
ALT (IU/L)	29.1 (19.6)	28.5 (13.9)	27.8 (13.5)	27.8 (15.5)	31.4 (17.4)	31.9 (15.2)
Albumin (g/L)	41.0 (3.1)	41.1 (3.3)	40.9 (3.4)	40.9 (3.2)	45.2 (3.0)	45.5 (2.6)
Bilirubin (µmol/L)	8.7 (4.2)	8.8 (4.4)	8.2 (4.2)	8.3 (4.1)	10.0 (4.8)	9.8 (4.8)
Background therapy						
Metformin	705 (100.0)	355 (100.0)	359 (100.0)	356 (100.0)	0 (0.0)	0 (0.0)
Sulfonylurea	0 (0.0)	0 (0.0)	359 (100.0)	356 (100.0)	0 (0.0)	0 (0.0)
Thiazolidinedione	0 (0.0)	0 (0.0)	0 (0.0)	0 (0.0)	0 (0.0)	0 (0.0)
DPP4-inhibitor	0 (0.0)	0 (0.0)	0 (0.0)	0 (0.0)	0 (0.0)	0 (0.0)
Other*	0 (0.0)	0 (0.0)	0 (0.0)	0 (0.0)	0 (0.0)	0 (0.0)

*other = α -glucosidase inhibitors, glucagon-like peptide-1 agonists, glinides

Values shown are mean (standard deviation) or n (%) for participants included in the mixed effects models and subsequent meta-analysis. This includes participants who were not insulin-treated and with at least one on-treatment HbA1c between randomisation and 6 months. EMPA-REG MONO/PIO/METSU: HbA1c measurements excluded after changes in study medication (including dose changes); EMPA-REG OUTCOME: HbA1c measurements excluded after changes in study medication (including dose changes) or changes in background medication (not including dose changes). Study medication (trial arm) is as randomised in all CANTATA trials, and as per actual study medication given in all other trials.

BMI, body mass index; DPP4-inhibitor, dipeptidyl-peptidase 4 inhibitor; eGFR, estimated glomerular filtration rate; HbA1c, glycated haemoglobin, type A1c; HDL-c, high-density lipoprotein cholesterol; SGLT2-inhibitor, sodium-glucose cotransporter-2 inhibitor.

	CANTATA-SU (n=939) [Canagliflozin]	CANTATA-M (n=459) [Canagliflozin]	NCT01106651 (n=303) [Canagliflozin]	CANTATA-MSU (n=303) [Canagliflozin]	EMPA-REG PIO (n=321) [Empagliflozin]	EMPA-REG METSU (n=1,015) [Empagliflozin]
Age (years)	55.9 (9.3)	53.8 (10.8)	64.1 (6.3)	56.7 (9.8)	54.5 (9.5)	55.5 (10.0)
Sex						
Female	460 (49.0)	257 (56.0)	138 (45.5)	142 (46.9)	161 (50.2)	456 (44.9)
Male	479 (51.0)	202 (44.0)	165 (54.5)	161 (53.1)	160 (49.8)	559 (55.1)
HbA1c (mmol/mol)	61.5 (8.5)	69.5 (15.2)	60.3 (8.6)	65.2 (10.1)	64.7 (9.4)	69.6 (16.3)
BMI (kg/m²)	31.1 (5.3)	31.3 (6.3)	31.1 (4.5)	33.3 (6.3)	29.2 (5.6)	29.0 (5.5)
eGFR (mL/min/1.3 m²)	90.6 (19.3)	88.5 (19.8)	77.8 (16.7)	89.9 (19.8)	85.8 (22.6)	89.2 (21.1)
HDL-c (mmol/L)	1.2 (0.3)	1.2 (0.3)	1.2 (0.3)	1.1 (0.3)	1.3 (0.3)	1.3 (0.3)
Triglycerides (mmol/L)	2.1 (1.8)	2.1 (1.3)	1.8 (1.1)	2.2 (1.5)	1.8 (1.7)	1.9 (1.3)
ALT (IU/L)	28.9 (15.9)	28.6 (15.9)	26.2 (13.0)	28.9 (13.5)	23.6 (11.1)	28.2 (15.9)
Albumin (g/L)	42.2 (3.2)	41.1 (3.3)	40.9 (2.8)	40.9 (3.0)	44.6 (2.8)	45.2 (2.9)
Bilirubin (µmol/L)	8.8 (4.0)	9.4 (4.5)	8.7 (3.9)	8.7 (5.0)	8.7 (4.3)	9.2 (4.5)
Background therapy						
Metformin	939 (100.0)	0 (0.0)	278 (91.7)	303 (100.0)	245 (76.3)	1,015 (100.0)
Sulfonylurea	0 (0.0)	0 (0.0)	183 (60.5)	303 (100.0)	0 (0.0)	521 (51.3)
Thiazolidinedione	0 (0.0)	0 (0.0)	42 (13.7)	0 (0.0)	321 (100.0)	0 (0.0)
DPP4-inhibitor	0 (0.0)	0 (0.0)	32 (10.5)	0 (0.0)	0 (0.0)	0 (0.0)
Other*	0 (0.0)	0 (0.0)	17 (5.7)	0 (0.0)	0 (0.0)	0 (0.0)

*other = α -glucosidase inhibitors, glucagon-like peptide-1 agonists, glinides

Values shown are mean (standard deviation) or n (%) for participants included in the mixed effects models and subsequent meta-analysis. This includes participants who were not insulin-treated and with at least one on-treatment HbA1c between randomisation and 6 months. EMPA-REG MONO/PIO/METSU: HbA1c measurements excluded after changes in study medication (including dose changes); EMPA-REG OUTCOME: HbA1c measurements excluded after changes in study medication (including dose changes) or changes in background medication (not including dose changes). Study medication (trial arm) is as randomised in all CANTATA trials, and as per actual study medication given in all other trials.

BMI, body mass index; DPP4-inhibitor, dipeptidyl-peptidase 4 inhibitor; eGFR, estimated glomerular filtration rate; HbA1c, glycated haemoglobin, type A1c; HDL-c, high-density lipoprotein cholesterol; SGLT2-inhibitor, sodium-glucose cotransporter-2 inhibitor.

	EMPA-REG OUTCOME (n=2,210) [Empagliflozin]	NCT00602472 (n=774) [Linagliptin]	NCT00621140 (n=326) [Linagliptin]	NCT00601250 (n=506) [Linagliptin]	NCT00622284 (n=759) [Linagliptin]
Age (years)	62.7 (8.8)	58.3 (9.9)	56.3 (10.1)	56.6 (10.0)	59.8 (9.4)
Sex					
Female	596 (27.0)	411 (53.1)	167 (51.2)	238 (47.0)	310 (40.8)
Male	1,614 (73.0)	363 (46.9)	159 (48.8)	268 (53.0)	449 (59.2)
HbA1c (mmol/mol)	63.4 (9.3)	65.5 (8.8)	63.7 (9.4)	64.8 (9.3)	60.5 (9.6)
BMI (kg/m²)	29.7 (5.1)	28.4 (4.8)	29.0 (4.8)	29.9 (4.8)	30.2 (4.8)
eGFR (mL/min/1.3 m²)	76.8 (20.5)	95.8 (22.9)	90.1 (22.4)	101.2 (29.9)	93.0 (22.5)
HDL-c (mmol/L)	1.2 (0.3)	1.2 (0.3)	1.2 (0.4)	1.2 (0.3)	1.2 (0.3)
Triglycerides (mmol/L)	1.9 (1.4)	2.1 (2.1)	1.9 (1.1)	2.0 (1.4)	1.9 (1.4)
ALT (IU/L)	26.1 (14.1)	27.2 (15.8)	25.7 (15.3)	27.2 (15.5)	27.8 (15.9)
Albumin (g/L)	44.8 (2.9)	45.3 (2.7)	45.1 (3.0)	44.8 (2.5)	44.8 (2.4)
Bilirubin (µmol/L)	8.6 (4.6)	9.3 (4.3)	10.7 (5.8)	9.0 (4.7)	9.0 (4.7)
Background therapy					
Metformin	1,819 (82.3)	774 (100.0)	0 (0.0)	506 (100.0)	759 (100.0)
Sulfonylurea	1,419 (64.2)	774 (100.0)	0 (0.0)	0 (0.0)	0 (0.0)
Thiazolidinedione	125 (5.7)	0 (0.0)	0 (0.0)	0 (0.0)	0 (0.0)
DPP4-inhibitor	324 (14.7)	0 (0.0)	0 (0.0)	0 (0.0)	0 (0.0)
Other*	225 (10.2)	0 (0.0)	0 (0.0)	0 (0.0)	0 (0.0)

*other = α -glucosidase inhibitors, glucagon-like peptide-1 agonists, glinides

Values shown are mean (standard deviation) or n (%) for participants included in the mixed effects models and subsequent meta-analysis. This includes participants who were not insulin-treated and with at least one on-treatment HbA1c between randomisation and 6 months. EMPA-REG MONO/PIO/METSU: HbA1c measurements excluded after changes in study medication (including dose changes); EMPA-REG OUTCOME: HbA1c measurements excluded after changes in study medication (including dose changes) or changes in background medication (not including dose changes). Study medication (trial arm) is as randomised in all CANTATA trials, and as per actual study medication given in all other trials.

BMI, body mass index; DPP4-inhibitor, dipeptidyl-peptidase 4 inhibitor; eGFR, estimated glomerular filtration rate; HbA1c, glycated haemoglobin, type A1c; HDL-c, high-density lipoprotein cholesterol; SGLT2-inhibitor, sodium-glucose cotransporter-2 inhibitor.

sTable 2: Associations between clinical features and baseline HbA1c adjusted 6 month HbA1c response for SGLT2-inhibitor and DPP4-inhibitor treatment

a) CPRD routine clinical data (primary cohort, n=26,877). Data underlying Figure 2a.

Estimates are derived from separate models for each clinical feature. N's represent the number of patients included in the model for each clinical feature. Each model was adjusted for baseline HbA1c-by-drug interaction, number of glucose-lowering drug classes ever prescribed, number of current glucose-lowering treatments, and month of HbA1c outcome measurement.

	SGLT2-inhibitor	DPP4-inhibitor
	Beta coefficient (95%CI)	Beta coefficient (95%CI)
Male Sex (n=26,877)	-1.39 (-1.92;-0.86)	-0.40 (-0.82;0.02)
Current age per year (n=26,877)	0.27 (-0.02;0.56)	-1.86 (-2.05;-1.66)
Diabetes Duration per year (n=26,877)	0.41 (0.12;0.70)	-1.12 (-1.33;-0.91)
eGFR per 1 mL/min/1.3 m ² (n=26,877)	-0.81 (-1.10;-0.52)	1.45 (1.25;1.64)
BMI per 1 kg/m ² (n=26,877)	-0.21 (-0.47;0.05)	0.96 (0.75;1.17)
HDL-c per 1 mmol/L (n=26,877)	0.62 (0.36;0.89)	-0.39 (-0.60;-0.19)
Triglycerides per 1 mmol/L (n=26,877)	0.05 (-0.24;0.33)	0.99 (0.78;1.21)
ALT per 1 IU/L (n=26,877)	-1.42 (-1.70;-1.14)	0.57 (0.35;0.78)
Albumin per 1 g/L (n=26,877)	-0.59 (-0.85;-0.32)	0.16 (-0.05;0.37)
Bilirubin per 1 μmol/L (n=26,877)	-1.01 (-1.27;-0.75)	-0.40 (-0.61;-0.20)

Clinical trial data (meta-analysis of 14 clinical trials). Data underlying Figure 2b. For each clinical feature, estimates are derived from random effects meta-analysis of beta coefficients estimated separately in each trial. I^2 represents the fraction of variance that is due to heterogeneity across the trials. N's represent the number of patients included in the model for each clinical feature.

a) Meta-analysis

	SGLT2-inhibitor			DPP4-inhibitor		
	Beta coefficient (95%CI)	I^2	N	Beta coefficient (95%CI)	I^2	N
Male Sex	-1.05 (-1.63;-0.47)	70.3%	7,119	-0.20 (-0.60;0.20)	0.0%	3,295
Current age per SD change	0.76 (0.60;0.92)	0.0%	7,117	0.12 (-0.10;0.33)	0.8%	3,295
Diabetes Duration per SD change	NA	NA	NA	NA	NA	NA
eGFR per SD change	-0.82 (-0.96;-0.68)	1.04%	7,104	0.01 (-0.16;0.18)	0.0%	3,226
BMI per SD change	0.09 (-0.14;0.33)	40.7%	7,116	0.70 (0.41;0.99)	21.3%	3,295
HDL-c per SD change	0.55 (0.38;0.73)	23.5%	7,054	-0.08 (-0.26;0.11)	0.0%	3,166
Triglycerides per SD change	0.15 (0.00;0.29)	0.0%	7,067	0.56 (0.36;0.76)	0.0%	3,166
ALT per SD change	-0.79 (-1.02;-0.55)	43.1%	7,027	0.43 (0.13;0.73)	40.4%	3,130
Albumin per SD change	-0.84 (-1.12;-0.56)	47.0%	7,079	-0.57 (-0.86,-0.28)	0.0%	3,184
Bilirubin per SD change	-0.52 (-0.74;-0.29)	36.2%	6,981	-0.26 (-0.65;0.13)	65.6%	3,166

b) Individual trials

	CANTATA-D						CANTATA-D2						EMPA-REG MONO					
	SGLT2-inhibitor (n=705) [Canagliflozin]			DPP4-inhibitor (n=355) [Sitagliptin]			SGLT2-inhibitor (n=359) [Canagliflozin]			DPP4-inhibitor (n=356) [Sitagliptin]			SGLT2-inhibitor (n=505) [Empagliflozin]			DPP4-inhibitor (n=219) [Sitagliptin]		
	Beta	SE	n	Beta	SE	n	Beta	SE	n	Beta	SE	n	Beta	SE	n	Beta	SE	n
Male sex	-0.120	0.460	705	0.634	0.641	355	-0.978	0.648	359	-0.160	0.652	356	-1.639	0.714	505	-0.785	0.822	219
Current age	0.728	0.254	705	-0.149	0.347	355	0.720	0.348	359	-0.008	0.369	356	0.802	0.308	504	0.030	0.418	219
eGFR	-0.826	0.236	702	-0.053	0.321	353	-0.539	0.344	356	-0.062	0.304	354	-0.424	0.334	504	0.482	0.433	219
BMI	0.260	0.232	703	0.464	0.345	355	0.618	0.300	359	0.566	0.306	356	-0.316	0.403	505	1.288	0.496	219
HDL-c	0.316	0.229	700	0.202	0.358	353	0.756	0.315	358	0.210	0.315	354	1.271	0.287	498	0.026	0.347	218
Triglycerides	0.086	0.217	704	0.724	0.341	354	-0.296	0.298	358	0.556	0.320	355	-0.270	0.291	498	0.376	0.351	218
ALT	-0.577	0.245	699	-0.245	0.377	351	-0.332	0.382	354	1.029	0.356	354	-0.694	0.364	500	0.473	0.454	218
Albumin	-0.741	0.291	699	-0.286	0.393	351	-0.675	0.378	355	-0.280	0.396	354	-0.342	0.457	502	-1.717	0.600	218
Bilirubin	0.016	0.282	684	-0.469	0.382	346	-0.265	0.401	343	0.795	0.413	344	-0.870	0.356	502	-1.335	0.410	218

	CANTATA-SU (n=939) [Canagliflozin]			CANTATA-M (n=459) [Canagliflozin]			NCT01106651 (n=303) [Canagliflozin]			CANTATA-MSU (n=303) [Canagliflozin]			EMPA-REG PIO (n=321) [Empagliflozin]			EMPA-REG METSU (n=1,015) [Empagliflozin]		
	Beta	SE	n	Beta	SE	n	Beta	SE	n	Beta	SE	n	Beta	SE	n	Beta	SE	n
	Male sex	-1.267	0.371	939	0.034	0.624	459	-0.619	0.567	303	-0.953	0.596	303	0.123	0.757	321	-1.949	0.415
Current age	0.599	0.206	939	0.907	0.298	459	0.806	0.463	303	0.644	0.314	303	1.000	0.411	321	0.696	0.218	1,015
eGFR	-0.671	0.183	937	-1.042	0.302	457	-0.390	0.321	301	-0.610	0.281	301	-0.962	0.313	321	-0.809	0.187	1,015
BMI	-0.380	0.228	939	0.018	0.325	459	0.214	0.414	302	-0.050	0.305	303	0.497	0.447	321	0.519	0.248	1,015
HDL-c	0.702	0.178	935	0.252	0.323	454	0.437	0.298	302	0.528	0.320	302	0.090	0.361	320	0.621	0.198	1,001
Triglycerides	0.130	0.176	938	0.324	0.303	459	0.230	0.303	303	0.138	0.270	302	0.595	0.381	320	-0.252	0.203	1,001
ALT	-0.844	0.203	929	-0.702	0.355	454	-0.429	0.344	301	-0.396	0.345	300	-1.043	0.450	319	-0.900	0.227	997
Albumin	-0.626	0.234	932	-0.296	0.376	455	-0.674	0.401	301	-0.731	0.393	301	-0.759	0.548	320	-1.634	0.285	1,004
Bilirubin	-0.166	0.243	918	-0.972	0.348	446	-0.370	0.379	290	-0.310	0.311	289	-0.534	0.448	320	-1.023	0.239	1,003

	EMPA-REG OUTCOME (n=2,210) [Empagliflozin]			NCT00602472 (n=770) [Linagliptin]			NCT00621140 (n=326) [Linagliptin]			NCT00601250 (n=506) [Linagliptin]			NCT00622284 (n=759) [Linagliptin]		
	Beta	SE	n	Beta	SE	n	Beta	SE	n	Beta	SE	n	Beta	SE	n
Male sex	-2.390	0.329	2,210	0.279	0.438	774	-0.860	0.768	326	-0.490	0.563	506	-0.428	0.363	759
Current age	0.861	0.173	2,209	-0.146	0.228	774	-0.082	0.397	326	0.121	0.293	506	0.495	0.196	759
eGFR	-1.061	0.134	2,210	0.117	0.182	744	0.320	0.333	311	0.048	0.183	486	-0.174	0.150	759
BMI	-0.187	0.187	2,210	1.099	0.292	774	1.331	0.519	326	0.254	0.379	506	0.476	0.243	759
HDL-c	0.444	0.148	2,184	-0.362	0.212	751	-0.099	0.303	298	-0.044	0.269	473	-0.067	0.171	719
Triglycerides	-0.014	0.156	2,184	0.713	0.200	760	0.806	0.429	296	0.561	0.293	469	0.323	0.186	714
ALT	-1.346	0.166	2,174	0.519	0.230	739	1.007	0.444	299	0.429	0.319	460	0.135	0.195	709
Albumin	-1.286	0.202	2,210	-0.659	0.307	762	-0.331	0.529	308	-0.861	0.436	470	-0.455	0.300	721
Bilirubin	-0.605	0.163	2,186	-0.292	0.248	759	-0.534	0.342	308	-0.224	0.300	470	0.105	0.198	721

Mixed effects model results used for the trial meta-analysis

Beta, SE and n are the beta coefficients, standard error of the means and number of participants from mixed effects models of the association between individual clinical features and HbA1c outcome within each trial arm*. These models included patient-level random effects and adjusted for baseline HbA1c. Clinical features were standardised to CPRD means and standard deviations, so that beta coefficients represent the change in outcome HbA1c in mmol/mol per standard deviation change in the clinical feature (ALT and triglycerides values were logged prior to inclusion in the model). Diabetes duration was not available (except in categorised form) in any of the trial data.

Using notation from the nlme R package, the mixed models were of the form:

[outcome HbA1c] ~ factor([time point]) + [baseline HbA1c] + [clinical feature of interest] + factor([SGLT2-inhibitor dose]), random = ~ [time point] | [patient ID]

Outcome HbA1c: on-therapy HbA1c values up to 6 months post-randomisation. EMPA-REG MONO/PIO/METSU: HbA1c measurements excluded after changes in study medication (including dose changes);

EMPA-REG OUTCOME: HbA1c measurements excluded after changes in study medication (including dose changes) or changes in background medication (not including dose changes).

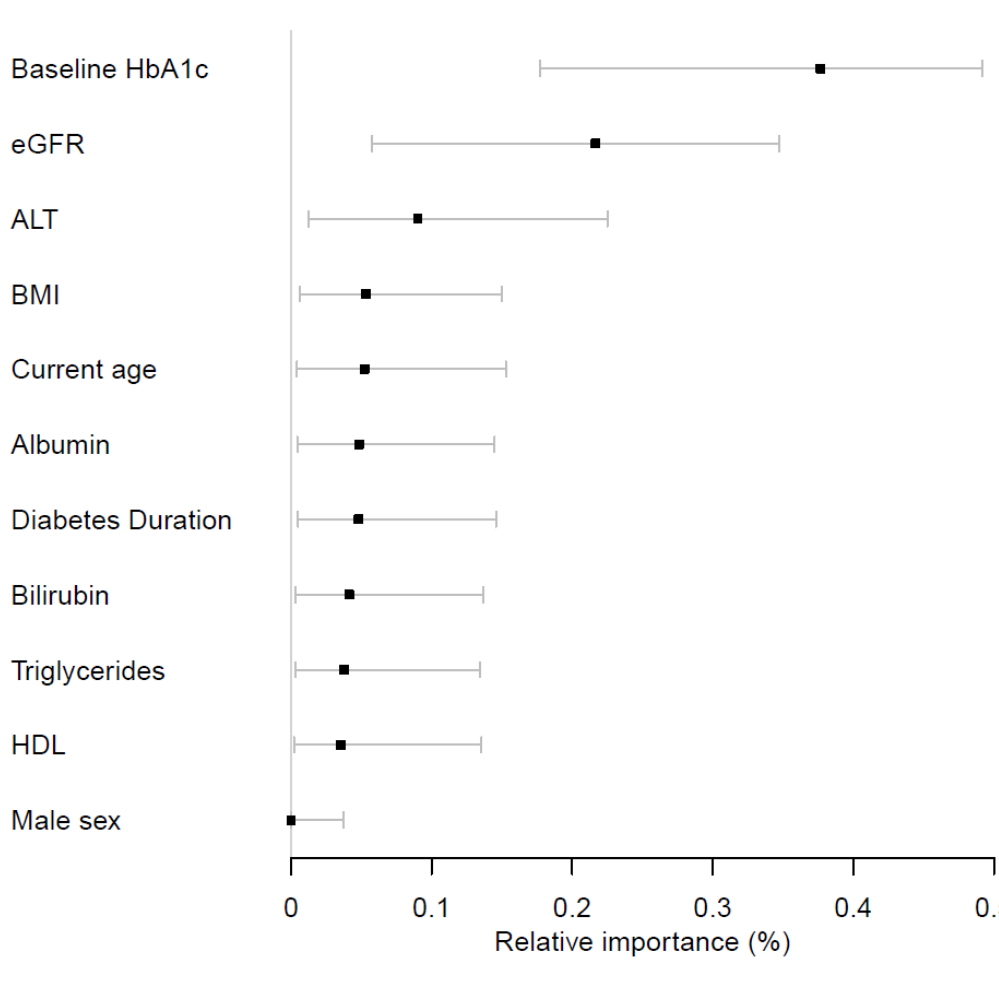
Time point: time point post-randomisation at which the outcome HbA1c was measured (1 for the first time point post-randomisation in a trial, 2 for the second etc.).

Total number of observations per model was > n as individuals have multiple on-therapy HbA1c values up to 6 months post-randomisation). Participants who were insulin-treated were not included in the analysis.

*Study medication (trial arm) is as randomised in all CANTATA trials, and as per actual study medication given in all other trials.

BMI, body mass index; DPP4-inhibitor, dipeptidyl-peptidase 4 inhibitor; eGFR, estimated glomerular filtration rate; HbA1c, glycated haemoglobin, type A1c; HDL-c, high-density lipoprotein cholesterol; SGLT2-inhibitor, sodium-glucose cotransporter-2 inhibitor.

sFigure 1: Relative feature importance for treatment selection between SGLT2-inhibitor and DPP4-inhibitor treatment, for all clinical features in multivariable analysis in routine clinical data. Feature importance reflects the proportion of chi-squared explained by drug-by-covariate interaction terms for each clinical feature, as these represent differential treatment effects for the two therapies. Model estimated from complete case analysis of 12,034 CPRD patients with full clinical feature set available in the primary care record. Bars represent bootstrapped 95% confidence intervals.

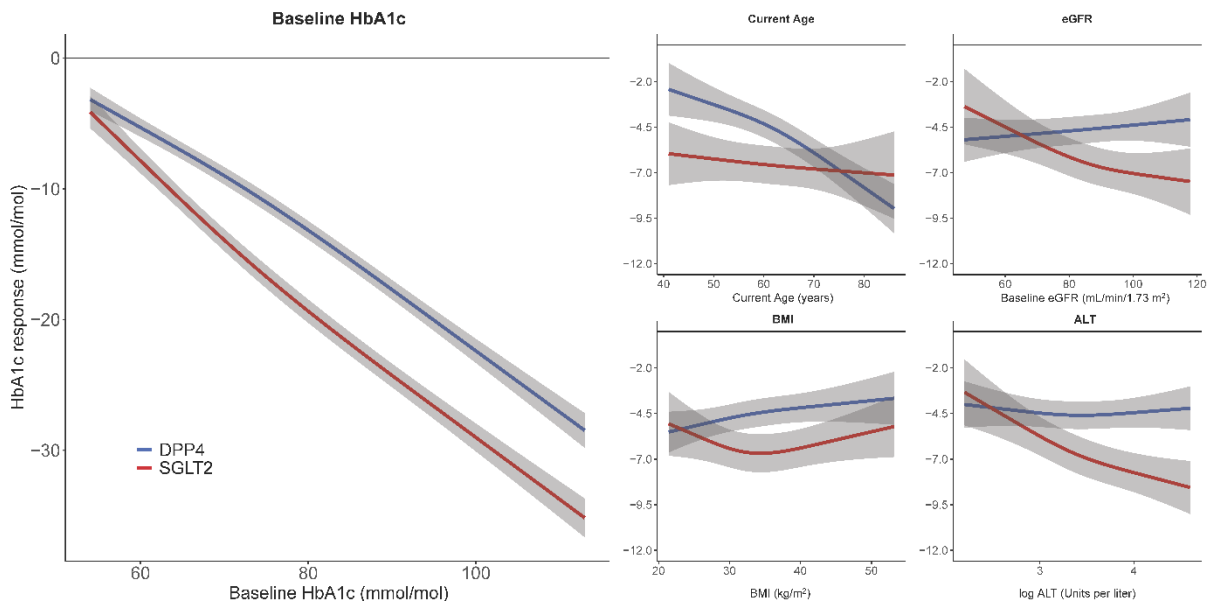


sTable 3: Full treatment selection model equation. Drugclass = “SGLT2” or “DPP4” (factor variable), prehba1cmmol = baseline HbA1c, drugline = number of current and previous therapies (including therapy initiated), ncurrtx = number of current glucose-lowering therapies, hba1cmonth = month of HbA1c outcome measure, egfr_ckdepi = eGFR (CKD-EPI equation), prealtlog = Alanine aminotransferase (logged), prebmi = BMI, agetx = current age. To predict achieved 6 month HbA1c for a patient initiating second-line treatment (e.g. after metformin), set drugline == 2, ncurrtx == 1, hba1cmonth == 6, and input patient-specific values of other clinical features.

Full model equation

$$\begin{aligned}
 &31.321954+0.64204609*\text{prehba1cmmol}-8.5439347\text{e-}05*\text{pmax}(\text{prehba1cmmol}- \\
 &59,0)^3+0.00012815908*\text{pmax}(\text{prehba1cmmol}-71.000008,0)^3-4.2719731\text{e-}05*\text{pmax}(\text{prehba1cmmol}- \\
 &94.999992,0)^3+33.896175*(\text{drugclass}=="\text{SGLT2}")+4.3479453*(\text{drugline}=="3")+7.7707306*(\text{drugline}=="4")+9.851905 \\
 &6*(\text{drugline}=="5")-6.0952285*(\text{ncurrtx}=="1")-8.4474283*(\text{ncurrtx}=="2")-10.076309*(\text{ncurrtx}=="3")+0.01458388* \\
 &\text{egfr_ckdepi}+6.5992202\text{e-}07*\text{pmax}(\text{egfr_ckdepi}-61.712658,0)^3-1.6584462\text{e-}06*\text{pmax}(\text{egfr_ckdepi}- \\
 &87.730606,0)^3+9.9852416\text{e-}07*\text{pmax}(\text{egfr_ckdepi}-104.9258,0)^3-0.59830102*\text{prealtlog}+0.38060553*\text{pmax}(\text{prealtlog}- \\
 &2.7080502,0)^3-0.75191225*\text{pmax}(\text{prealtlog}-3.3672958,0)^3+0.37130672*\text{pmax}(\text{prealtlog}- \\
 &4.0430513,0)^3+0.090509535*\text{prebmi}-0.00016688487*\text{pmax}(\text{prebmi}-25.700001,0)^3+0.00027814137*\text{pmax}(\text{prebmi}- \\
 &32.099998,0)^3-0.0001112565*\text{pmax}(\text{prebmi}-41.700001,0)^3-0.093145764*\text{agetx}-9.4518092\text{e-}05*\text{pmax}(\text{agetx}- \\
 &49,0)^3+0.00018228489*\text{pmax}(\text{agetx}-62,0)^3-8.77668\text{e-}05*\text{pmax}(\text{agetx}-76,0)^3-0.62516011* \\
 &\text{hba1cmonth}+0.0042770662*\text{pmax}(\text{hba1cmonth}-4,0)^3-0.012831199*\text{pmax}(\text{hba1cmonth}- \\
 &10,0)^3+0.0085541324*\text{pmax}(\text{hba1cmonth}-13,0)^3+(\text{drugclass}=="\text{SGLT2}")*(-0.26397744* \\
 &\text{prehba1cmmol}+0.0002001556*\text{pmax}(\text{prehba1cmmol}-59,0)^3-0.00030023353*\text{pmax}(\text{prehba1cmmol}- \\
 &71.000008,0)^3+0.00010007793*\text{pmax}(\text{prehba1cmmol}-94.999992,0)^3)+(\text{drugclass}=="\text{SGLT2}")*(-0.10243175* \\
 &\text{egfr_ckdepi}+1.8080869\text{e-}05*\text{pmax}(\text{egfr_ckdepi}-61.712658,0)^3-4.5438926\text{e-}05*\text{pmax}(\text{egfr_ckdepi}- \\
 &87.730606,0)^3+2.7358057\text{e-}05*\text{pmax}(\text{egfr_ckdepi}-104.9258,0)^3)+(\text{drugclass}=="\text{SGLT2}")*(-2.4219094* \\
 &\text{prealtlog}+0.24680001*\text{pmax}(\text{prealtlog}-2.7080502,0)^3-0.48757028*\text{pmax}(\text{prealtlog}- \\
 &3.3672958,0)^3+0.24077028*\text{pmax}(\text{prealtlog}-4.0430513,0)^3)+(\text{drugclass}=="\text{SGLT2}")*(-0.25565408* \\
 &\text{prebmi}+0.00099460814*\text{pmax}(\text{prebmi}-25.700001,0)^3-0.0016576797*\text{pmax}(\text{prebmi}- \\
 &32.099998,0)^3+0.00066307158*\text{pmax}(\text{prebmi}-41.700001,0)^3)+(\text{drugclass}=="\text{SGLT2}")*(0.061244729* \\
 &\text{agetx}+0.00010509417*\text{pmax}(\text{agetx}-49,0)^3-0.00020268161*\text{pmax}(\text{agetx}-62,0)^3+9.758744\text{e-}05*\text{pmax}(\text{agetx}-76,0)^3)
 \end{aligned}$$

sFigure 2: Visualisation of non-linear associations for continuous clinical variables in the full multivariable treatment selection model (as reported in sTable 3). Predictions are scaled to: baseline HbA1c 58, mean value of other continuous covariates and baseline defaults of other features: number of current and previous therapies (including therapy initiated) = 2, number of current glucose-lowering therapies = 1, month of HbA1c outcome measure = 6, eGFR = 87.9, Alanine aminotransferase (logged) = 3.33, BMI = 32.1, current age = 62.



sTable 4: Model performance statistics for predicting HbA1c outcome

a) Internal validation (CPRD derivation cohort, n=14,069). Model outcome is 6 month HbA1c.

*Optimism corrected performance estimated from 1000 bootstraps with replacement

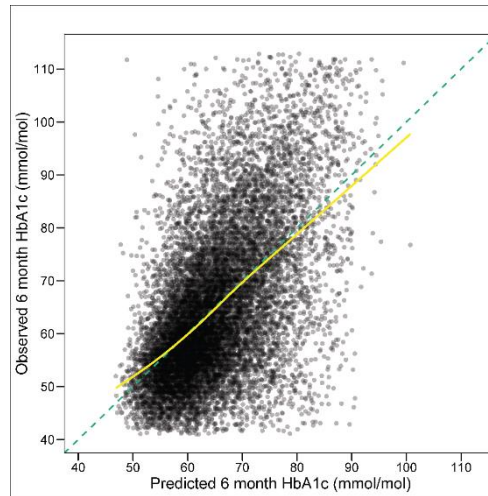
	Apparent performance (95% CI)	Average optimism*	Final model optimism corrected performance (95% CI)*
R²	0.294 (0.278, 0.310)	0.0026	0.29 (0.27, 0.31)
Root mean square error (mmol/mol)	12.91	-0.02	12.93 (12.69, 13.18)
Calibration slope	1.00 (0.98, 1.03)	0.0033	0.997 (0.995, 0.998)
Calibration-in-the-large (intercept) (mmol/mol)	-0.06 (-1.74, 1.62)	-0.2128	0.21 (0.18, 0.32)

b) External validation. Model outcome is 6 month HbA1c.

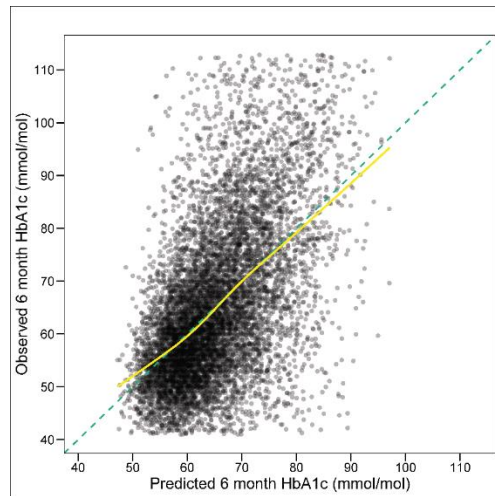
	CPRD validation cohort (n=9,376)	CANTATA D/D2 trials (n=1,755)	BI1245.20 trial (n=630)
R²	0.29 (0.27, 0.31)	0.28 (0.24, 0.33)	0.26 (0.20, 0.34)
Root mean square error (mmol/mol)	13.2	9.1	8.5
Calibration slope	1.02 (0.99, 1.05)	0.94 (0.88, 1.02)	1.06 (0.93, 1.20)
Calibration-in-the-large (intercept) (mmol/mol)	-1.2 (-3.3, 0.9)	-1.0 (-5.1, 3.1)	-6.1 (-14.0, 1.8)

sFigure 3: Assessment of calibration between model predicted HbA1c 6 month outcome and observed HbA1c in derivation and validation cohorts

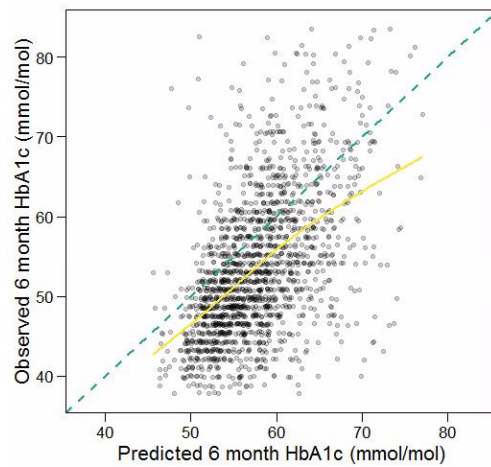
a) CPRD derivation cohort (n=14,069)



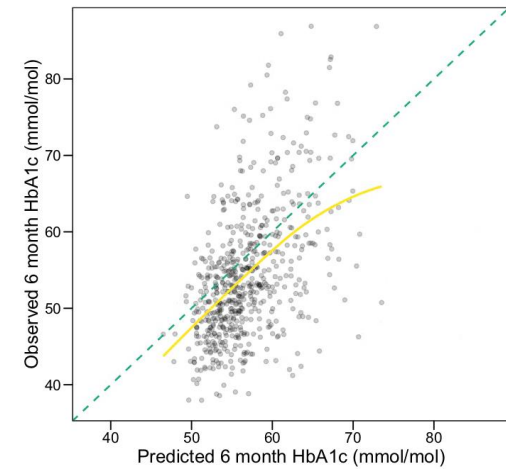
b) CPRD validation cohort (n=9,376)



c) CANTATA D/D2 trials (n=1,755)*



d) BI1245.20 trial (n=630)*



*In the trials, t

sTable 5: Observed treatment effects across subgroups defined by clinical cut-offs of predicted treatment effects (data underlying Figure 4). In CPRD, estimates are adjusted for clinical features in the treatment selection model (to improve precision and control for potential differences in covariate balance within subgroups). Trial data estimates are unadjusted.

a) CPRD validation sample (n=9,376).

Predicted HbA1c difference	Observed treatment difference (mmol/mol; negative favours SGLT2i)				
	N patients	Treatment difference	Lower CI	Upper CI	p-value
Overall	9,376	-4.7	-5.4	-4.2	0.000
Subgroup					
SGLT2i benefit by any mmol/mol	7,848	-5.4	-6.0	-4.7	<0.001
SGLT2i benefit by ≥ 5 mmol/mol	3,733	-8.8	-9.8	-7.8	<0.001
SGLT2i benefit by 3-5 mmol/mol	1,939	-2.7	-4.1	-1.4	<0.001
SGLT2i benefit by 0-3 mmol/mol	2,136	-0.8	-2.0	0.5	0.22
DPP4i benefit by any mmol/mol	1,528	0.5	-1.5	2.4	0.62
DPP4i benefit by 0-3 mmol/mol	1,094	0.1	-2.1	2.4	0.92
DPP4i benefit by ≥ 3 mmol/mol	434	2.0	-2.3	6.3	0.36

b) CANTATA-D and CANTATA-D2 clinical trial participants (n=1,755).

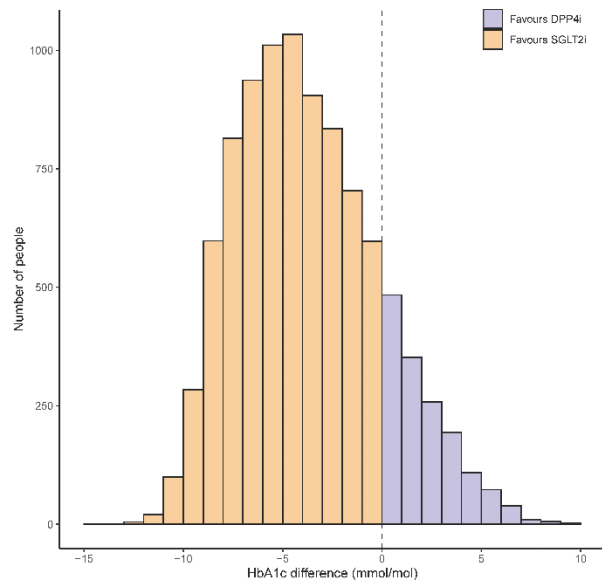
Predicted HbA1c difference	Observed treatment difference (mmol/mol; negative favours SGLT2i)				
	N patients	Treatment difference	Lower CI	Upper CI	p-value
Overall	1,755	-1.4	-2.2	-0.6	0.003
Subgroup					
SGLT2i benefit by any mmol/mol	1,384	-2.2	-3.2	-1.3	<0.001
SGLT2i benefit by ≥ 5 mmol/mol	443	-5.8	-7.7	-3.9	<0.001
SGLT2i benefit by 3-5 mmol/mol	360	-2.0	-3.8	-0.2	0.03
SGLT2i benefit by 0-3 mmol/mol	581	0.6	-0.7	1.8	0.37
DPP4i benefit by any mmol/mol	371	1.4	0.1	2.6	0.03
DPP4i benefit by 0-3 mmol/mol	287	0.9	-0.5	2.4	0.18
DPP4i benefit by ≥ 3 mmol/mol	84	2.3	-0.8	5.3	0.14

c) BI1245.20 clinical trial participants (n=630).

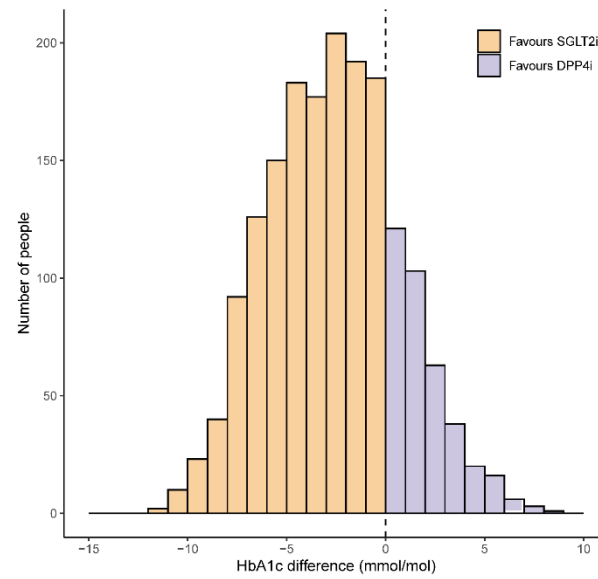
Predicted HbA1c difference	Observed treatment difference (mmol/mol; negative favours SGLT2i)				
	N patients	Treatment difference	Lower CI	Upper CI	p-value
Overall	630	-1.1	-2.6	0.5	0.19
Subgroup					
SGLT2i benefit by any mmol/mol	459	-1.9	-3.8	0.1	0.06
SGLT2i benefit by ≥ 5 mmol/mol	117	-6.6	-11.0	-2.2	0.003
SGLT2i benefit by 3-5 mmol/mol	126	-1.1	-4.6	2.4	0.54
SGLT2i benefit by 0-3 mmol/mol	216	0.9	-1.5	3.4	0.46
DPP4i benefit by any mmol/mol	171	1.5	-0.7	3.7	0.17
DPP4i benefit by 0-3 mmol/mol	131	1.3	-1.3	3.9	0.32
DPP4i benefit by ≥ 3 mmol/mol	40	2.6	-1.6	6.8	0.22

sFigure 4: Distribution of the predicted individualised treatment effect of SGLT2-inhibitor treatment compared to DPP4-inhibitor treatment in independent validation cohorts. Negative values reflect a predicted glucose-lowering treatment benefit on SGLT2-inhibitor treatment, positive values reflect a predicted treatment benefit on DPP4-inhibitor treatment.

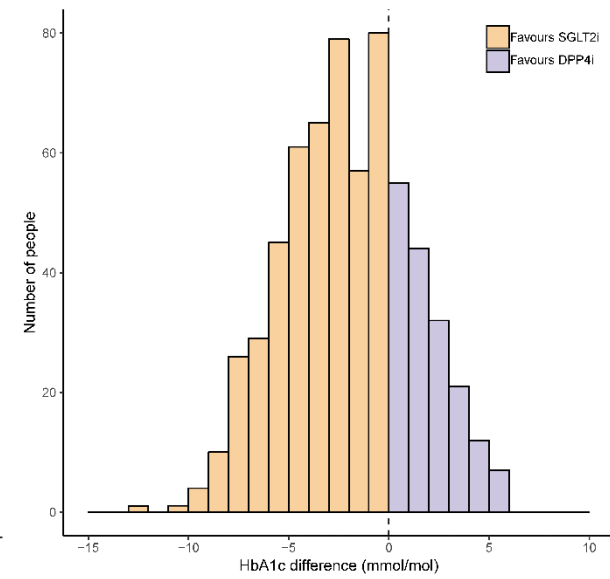
a) CPRD validation cohort (n=9,376)



b) CANTATA D/D2 trials (n=1,755)



c) BI1245.20 trial (n=630)



sTable 6: Validation of 12 month HbA1c: Observed treatment effects across subgroups defined by clinical cut-offs of predicted treatment effects. Estimates are unadjusted.

a) CANTATA-D and CANTATA-D2 clinical trial participants (n=1,775). 20 additional participants included who had an HbA1c outcome recorded post but not prior to 6 months.

Predicted HbA1c difference	Observed treatment difference (mmol/mol; negative favours SGLT2i)				
	N patients	Treatment difference	Lower CI	Upper CI	p-value
Overall	1,775	-2.4	-3.4	-1.4	<0.001
Subgroup					
SGLT2i benefit by any mmol/mol	1,399	-3.4	-4.6	-2.3	<0.001
SGLT2i benefit by ≥ 5 mmol/mol	446	-6.4	-8.6	-4.2	<0.001
SGLT2i benefit by 3-5 mmol/mol	365	-3.8	-5.9	-1.7	<0.001
SGLT2i benefit by 0-3 mmol/mol	588	0.5	-2.1	1.1	0.54
DPP4i benefit by any mmol/mol	376	0.7	-0.8	2.2	0.34
DPP4i benefit by 0-3 mmol/mol	291	0.3	-1.4	2.0	0.70
DPP4i benefit by ≥ 3 mmol/mol	85	1.8	-1.3	4.8	0.25

b) BI1245.20 clinical trial participants (n=630).

Predicted HbA1c difference	Observed treatment difference (mmol/mol; negative favours SGLT2i)				
	N patients	Treatment difference	Lower CI	Upper CI	p-value
Overall	630	-2.1	-3.7	-0.4	0.01
Subgroup					
SGLT2i benefit by any mmol/mol	459	-1.9	-3.8	0.1	0.06
SGLT2i benefit by ≥ 5 mmol/mol	117	-7.6	-12.0	-3.3	<0.001
SGLT2i benefit by 3-5 mmol/mol	126	-2.5	-6.2	1.3	0.20
SGLT2i benefit by 0-3 mmol/mol	216	-0.2	-2.8	2.4	0.88
DPP4i benefit by any mmol/mol	171	0.9	-1.8	3.5	0.52
DPP4i benefit by 0-3 mmol/mol	131	0.9	-2.2	4.0	0.53
DPP4i benefit by ≥ 3 mmol/mol	40	0.7	-4.7	6.0	0.80

sTable 7: 6 month weight change and risk of treatment discontinuation, across subgroups defined by clinical cut-offs of predicted treatment benefit, in CPRD routine clinical data

- a) **Estimates of 6 month weight change.** Estimates include all patients with valid baseline data for glucose-lowering treatment selection model and with weight outcome recorded between 3 and 15 months after drug initiation, on unchanged glucose-lowering therapy. Estimates are adjusted for baseline weight, the number of currently prescribed glucose-lowering treatments, and the number of glucose-lowering drug classes ever prescribed.

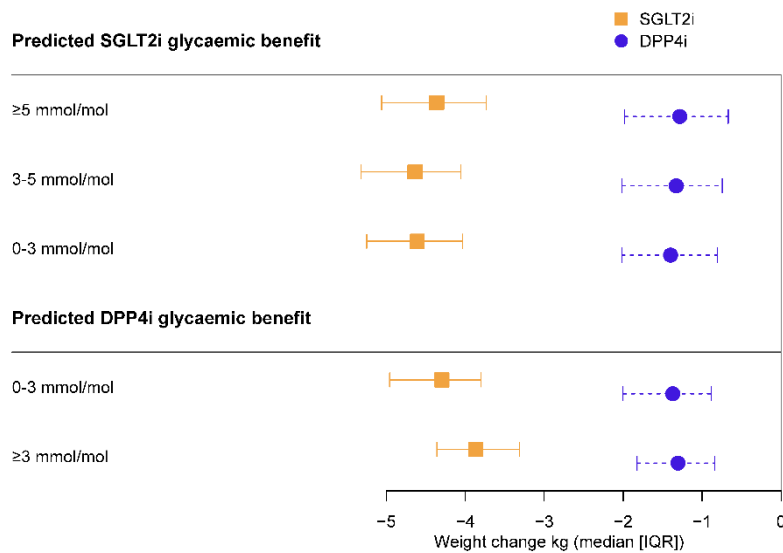
Predicted HbA1c difference	Weight change kg (Median [IQR])		
	N patients	SGLT2	DPP4
Overall	15,627	-3.7 (-4.3, -3.2)	-1.0 (-1.6, -0.5)
Subgroup			
SGLT2i benefit by any mmol/mol	13,212	-3.8 (-4.4, -3.3)	-1.0 (-1.6, -0.5)
SGLT2i benefit by ≥ 5 mmol/mol	6,407	-3.9 (-4.5, -3.4)	-1.0 (-1.6, -0.4)
SGLT2i benefit by 3-5 mmol/mol	3,239	-3.9 (-4.6, -3.4)	-1.0 (-1.6, -0.5)
SGLT2i benefit by 0-3 mmol/mol	3,566	-3.7 (-4.3, -3.2)	-1.1 (-1.6, -0.6)
DPP4i benefit by any mmol/mol	2,415	-3.0 (-3.5, -2.4)	-0.9 (-1.5, -0.5)
DPP4i benefit by 0-3 mmol/mol	1,763	-3.2 (-3.7, -2.7)	-1.0 (-1.5, -0.5)
DPP4i benefit by ≥ 3 mmol/mol	652	-2.4 (-3.0, -1.9)	-0.8 (-1.3, -0.4)

- b) **Estimates of treatment discontinuation within 6 months.** Estimates include all patients with valid baseline data for glucose-lowering treatment selection model and with 3 additional months of follow up to confirm treatment was truly discontinued. Estimates are adjusted for the number of currently prescribed glucose-lowering treatments, and the number of glucose-lowering drug classes ever prescribed.

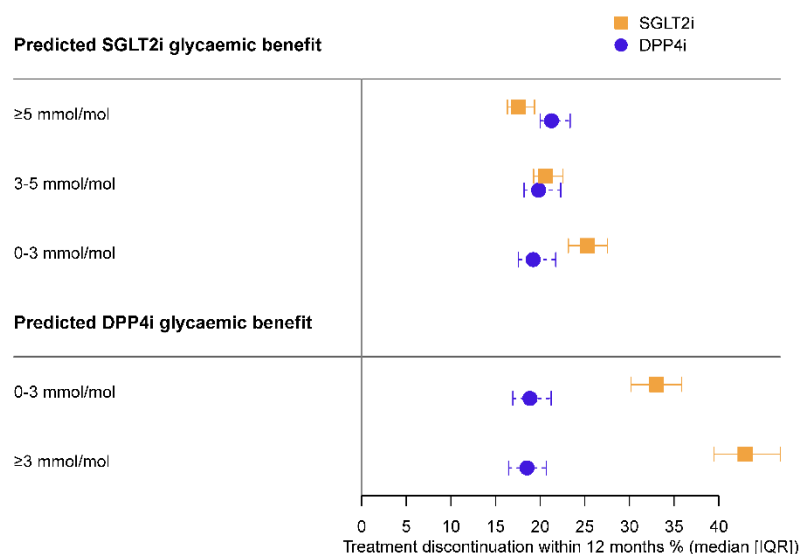
Predicted HbA1c difference	Treatment discontinuation % (Median [IQR])		
	N patients	SGLT2	DPP4
Overall	28,514	16.1 (13.5, 20.3)	14.4 (12.9, 16.7)
Subgroup			
SGLT2i benefit by any mmol/mol	23,992	15.2 (13.2, 17.9)	14.4 (12.9, 16.7)
SGLT2i benefit by ≥ 5 mmol/mol	11,730	13.2 (12.1, 14.8)	14.4 (13.0, 16.7)
SGLT2i benefit by 3-5 mmol/mol	5,761	15.6 (14.4, 17.5)	14.2 (12.8, 16.7)
SGLT2i benefit by 0-3 mmol/mol	6,431	19.0 (17.3, 21.3)	14.2 (12.8, 16.7)
DPP4i benefit by any mmol/mol	4,592	26.8 (23.4, 31.0)	14.8 (12.9, 16.8)
DPP4i benefit by 0-3 mmol/mol	3,249	25.0 (22.5, 27.7)	14.7 (12.8, 16.8)
DPP4i benefit by ≥ 3 mmol/mol	1,343	33.1 (29.7, 36.9)	14.9 (13.0, 16.9)

sFigure 5: Sensitivity analysis for 12 month weight change and risk of treatment discontinuation, across subgroups defined by clinical cut-offs of predicted treatment benefit, in CPRD routine clinical data

a) **Weight change at 12 months (n=11,298).** Estimates include all patients with valid baseline data for glucose-lowering treatment selection model and with weight outcome recorded between 9 and 15 months after drug initiation, on unchanged glucose-lowering therapy. Estimates are adjusted for baseline weight, the number of currently prescribed glucose-lowering treatments, and the number of glucose-lowering drug classes ever prescribed.



b) **Risk of treatment discontinuation within 12 months (n=23,739).** Estimates include all patients with valid baseline data for glucose-lowering treatment selection model and with 3 additional months of follow up to confirm treatment was truly discontinued. Estimates are adjusted for the number of currently prescribed glucose-lowering treatments, and the number of glucose-lowering drug classes ever prescribed.



sTable 8: Clinical characteristics of the entire CPRD primary care cohort by subgroups defined by model predicted HbA1c differences between therapies (n=36,454 with valid data to fit the treatment selection model).

n	Predicted HbA1c benefit subgroup										
	SGLT2i ≥5 mmol/mol		SGLT2i 3-5 mmol/mol		SGLT2i 0-3 mmol/mol		DPP4i 0-3 mmol/mol		DPP4i ≥3 mmol/mol		
	14860 (40.8%)		7332 (20.1%)		8245 (22.6%)		4203 (11.5%)		1814 (5.0%)		
Clinical characteristics (median [IQR])											
Age (years)	55.0 [50.0, 61.0]		62.0 [57.0, 67.0]		68.0 [62.0, 73.0]		73.0 [69.0, 78.0]		79.0 [75.0, 84.0]		
Duration of diabetes (years)	6.1 [3.4, 9.5]		7.6 [4.3, 11.3]		8.6 [5.1, 12.5]		9.9 [6.1, 14.0]		11.5 [7.5, 15.9]		
Male sex (n [%])	9892 (66.6)		4551 (62.1)		4827 (58.5)		2259 (53.7)		935 (51.5)		
HbA1c (mmol/mol)	80.2 [72.0, 91.0]		70.0 [64.0, 79.0]		66.0 [61.0, 74.0]		64.0 [59.0, 70.0]		61.0 [57.0, 66.0]		
BMI (kg/m2)	34.1 [30.7, 38.3]		32.1 [28.7, 36.6]		30.8 [27.7, 35.0]		29.2 [26.1, 33.2]		26.5 [24.0, 30.0]		
eGFR (mL/min/1.3 m2)	97 [89, 104]		88 [77, 96]		79 [68, 89]		68 [59, 79]		59 [51, 68]		
HDL-c (mmol/L)	1.0 [0.9, 1.2]		1.1 [0.9, 1.3]		1.1 [1.0, 1.3]		1.2 [1.0, 1.4]		1.3 [1.1, 1.5]		
Triglycerides (mmol/L)	2.1 [1.5, 3.0]		1.9 [1.4, 2.7]		1.8 [1.3, 2.5]		1.7 [1.2, 2.3]		1.5 [1.1, 2.1]		
ALT (IU/L)	37.0 [27.0, 52.0]		28.0 [21.0, 38.0]		24.0 [18.0, 33.0]		19.0 [15.0, 25.0]		15.0 [12.0, 20.0]		
Albumin (g/L)	43.0 [40.0, 45.0]		42.0 [39.0, 45.0]		42.0 [39.0, 45.0]		42.0 [39.0, 45.0]		41.0 [38.0, 44.0]		
Bilirubin (μmol/L)	9.0 [7.0, 12.0]		9.0 [6.0, 12.0]		9.0 [6.0, 12.0]		9.0 [6.0, 12.0]		8.8 [6.0, 11.0]		
Treatment received											
SGLT2-inhibitor	7399 (49.8%)		4173 (56.9%)		2888 (35.0%)		925 (22.0%)		205 (11.3%)		
DPP4-inhibitor	7461 (50.2%)		3159 (43.1%)		5357 (65.0%)		3278 (78.0%)		1609 (88.7%)		
Predicted 6 month outcomes by therapy											
Therapy	DPP4i		SGLT2i		DPP4i		SGLT2i		DPP4i		SGLT2i
HbA1c change (mmol/mol)	-8.5 [-13.2, -4.7]	-15.7 [-20.8, -11.4]	-5.6 [-9.7, -2.2]	-9.7 [-13.8, -6.1]	-4.8 [-8.7, -1.6]	-6.5 [-10.4, -3.2]	-5.1 [-8.6, -1.8]	-3.8 [-7.4, -0.4]	-5.2 [-8.4, -1.6]	-0.4 [-4.0, 3.4]	
Weight change (KG)	-0.9 [-1.5, -0.4]	-3.8 [-4.4, -3.3]	-1.0 [-1.6, -0.5]	-3.9 [-4.5, -3.4]	-1.0 [-1.6, -0.5]	-3.7 [-4.2, -3.2]	-0.9 [-1.5, -0.5]	-3.1 [-3.7, -2.6]	-0.8 [-1.3, -0.4]	-2.4 [-2.9, -1.9]	
Treatment discontinuation (%)	14.4 [13.0, 16.7]	13.3 [12.1, 14.9]	14.2 [12.8, 16.7]	15.6 [14.4, 17.6]	14.2 [12.8, 16.7]	19.1 [17.3, 21.4]	14.8 [12.8, 16.8]	25.1 [22.6, 28.0]	14.9 [13.0, 16.9]	33.4 [29.8, 37.3]	