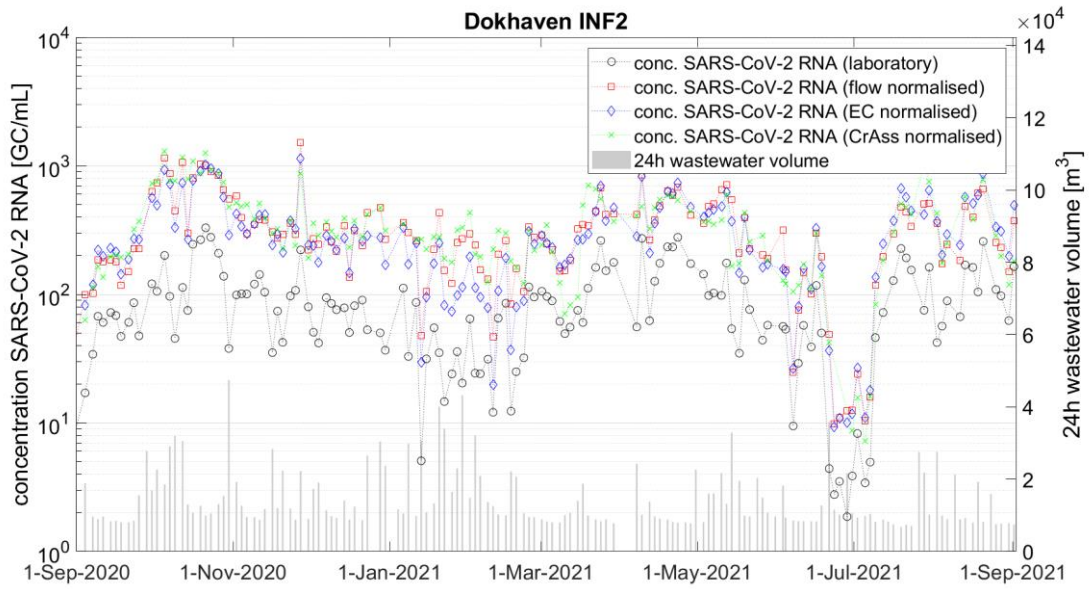


1 Supplemental material

2 S1. Normalisation results of SARS-CoV-2 concentration per catchment

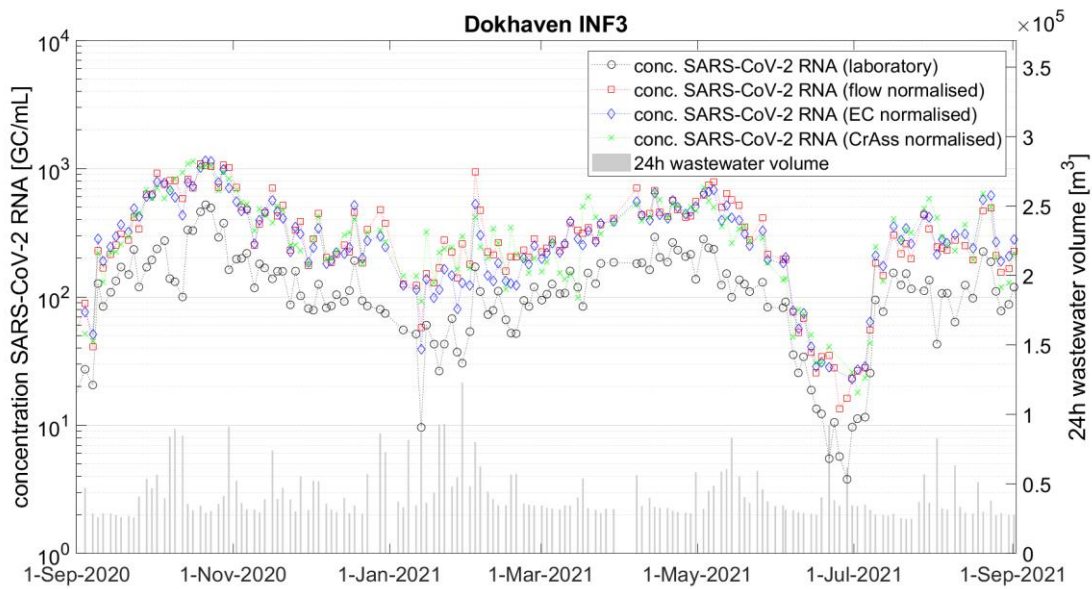


3

4 Figure S1.1. SARS-CoV-2 trends in INF2 catchment. On left axis lab results, flow normalised, CrAss  
5 normalised and EC normalised, on right axis the daily flow volume.

6

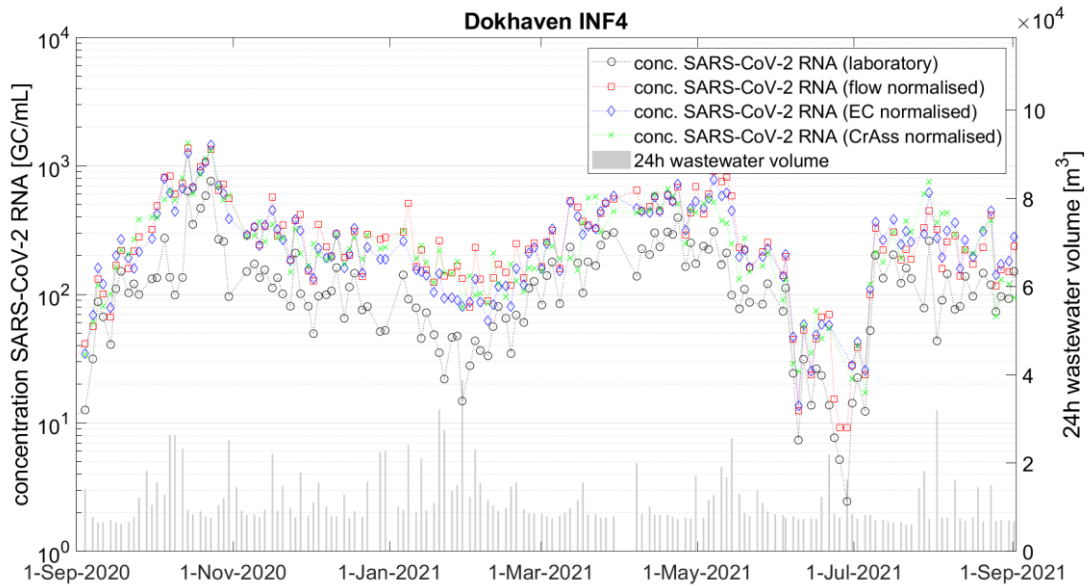
7



8

9 Figure S1.2. SARS-CoV-2 trends in INF3 catchment. On left axis lab results, flow normalised, CrAss  
10 normalised and EC normalised, on right axis the daily flow volume.

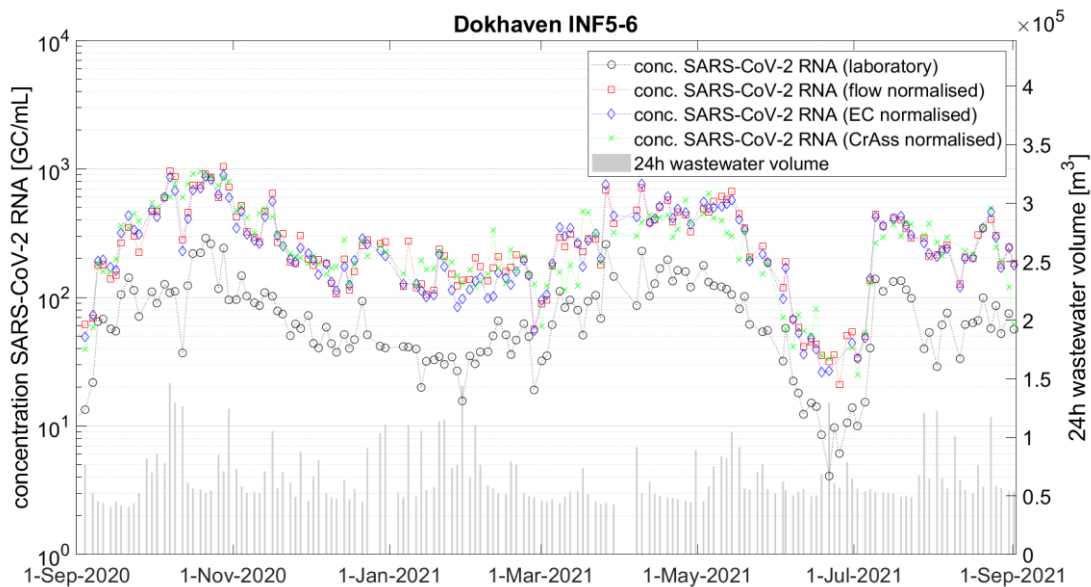
11



12

13 Figure S1.3. SARS-CoV-2 trends in INF4 catchment. On left axis lab results, flow normalised, CrAss  
14 normalised and EC normalised, on right axis the daily flow volume.

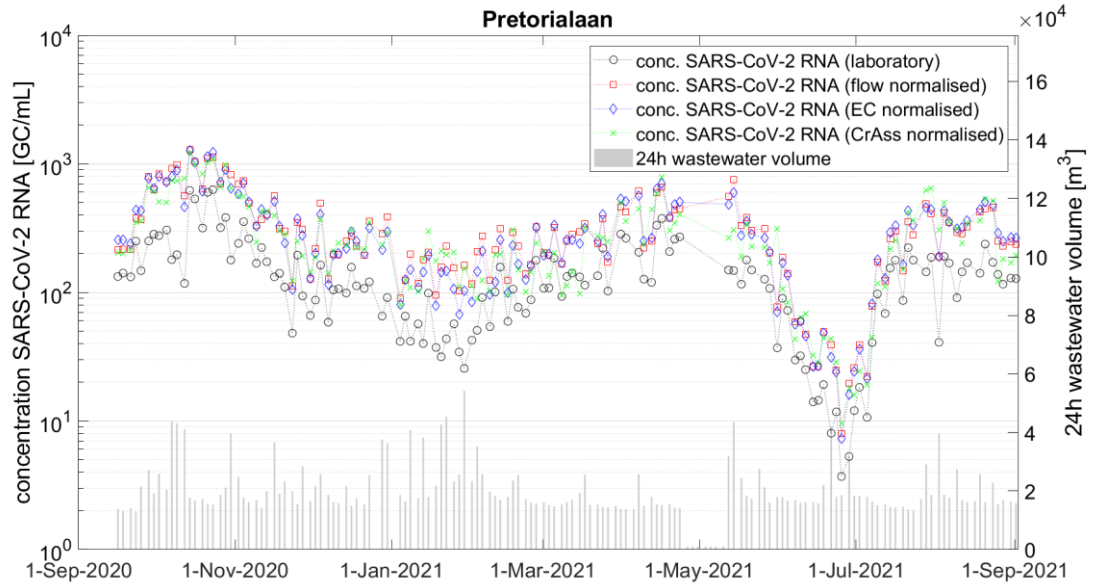
15



16

17 Figure S1.4. SARS-CoV-2 trends in INF5-6 catchment. On left axis lab results, flow normalised, CrAss  
18 normalised and EC normalised, on right axis the daily flow volume.

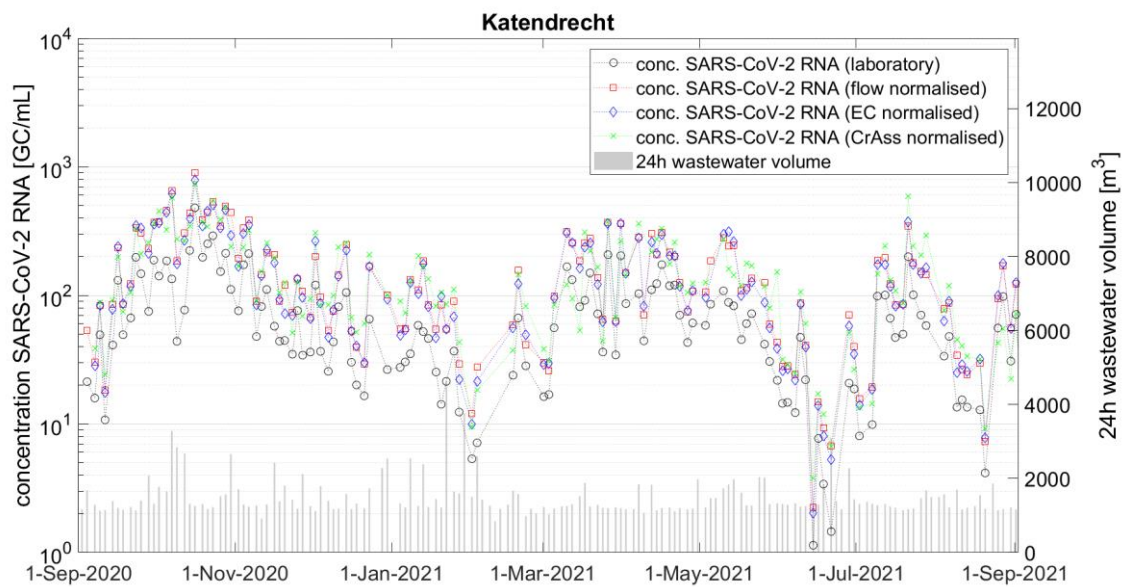
19



20

21 Figure S1.5. SARS-CoV-2 trends in Pretoriaaan catchment. On left axis lab results, flow normalised,  
22 CrAss normalised and EC normalised, on right axis the daily flow volume.

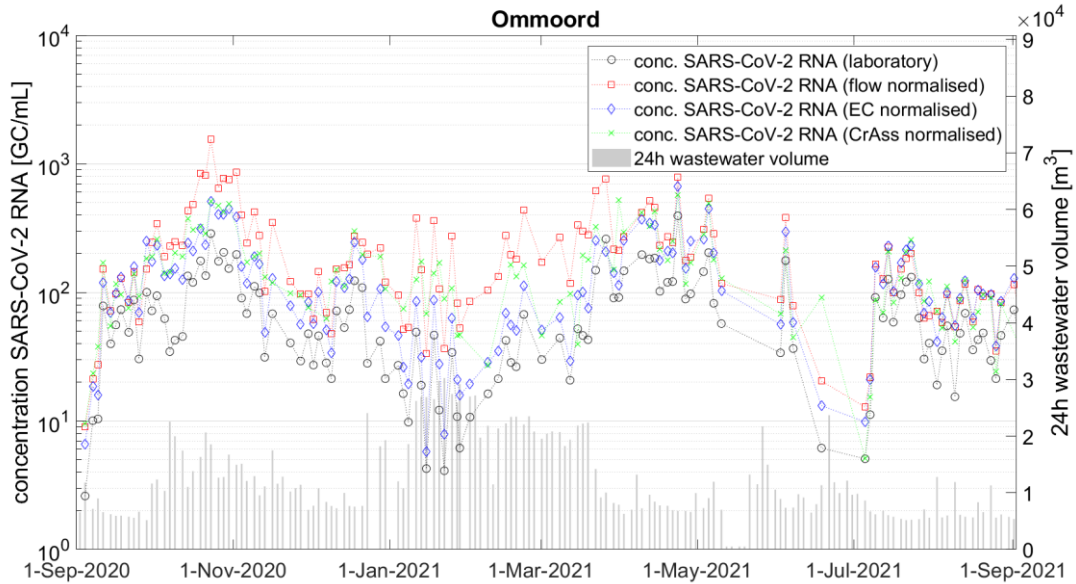
23



24

25 Figure S1.6. SARS-CoV-2 trends in Katendrecht catchment. On left axis lab results, flow normalised,  
26 CrAss normalised and EC normalised, on right axis the daily flow volume.

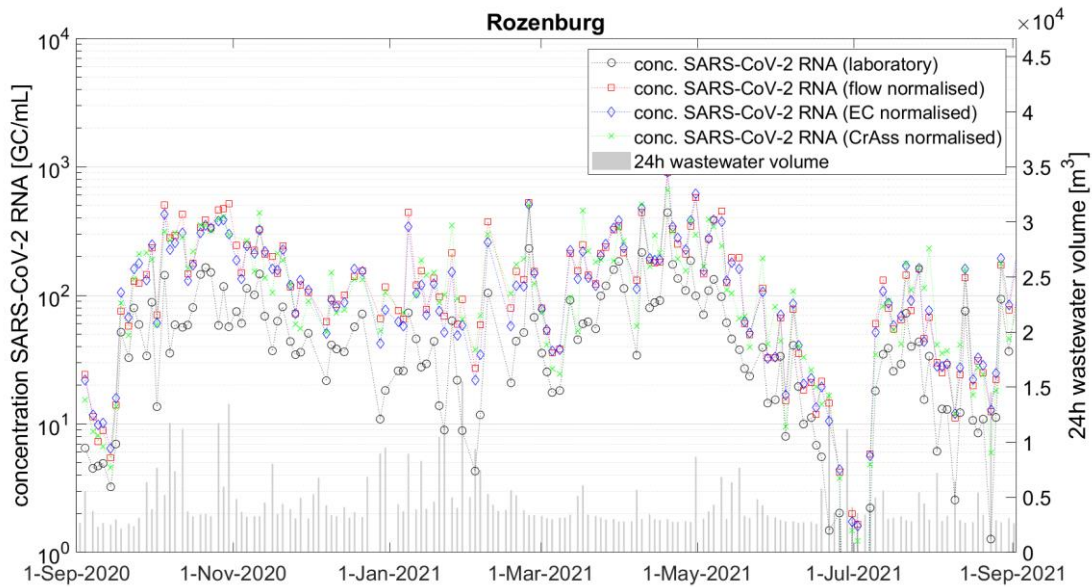
27



28

29 Figure S1.7. SARS-CoV-2 trends in Ommoord catchment. On left axis lab results, flow normalised, CrAss  
30 normalised and EC normalised, on right axis the daily flow volume.

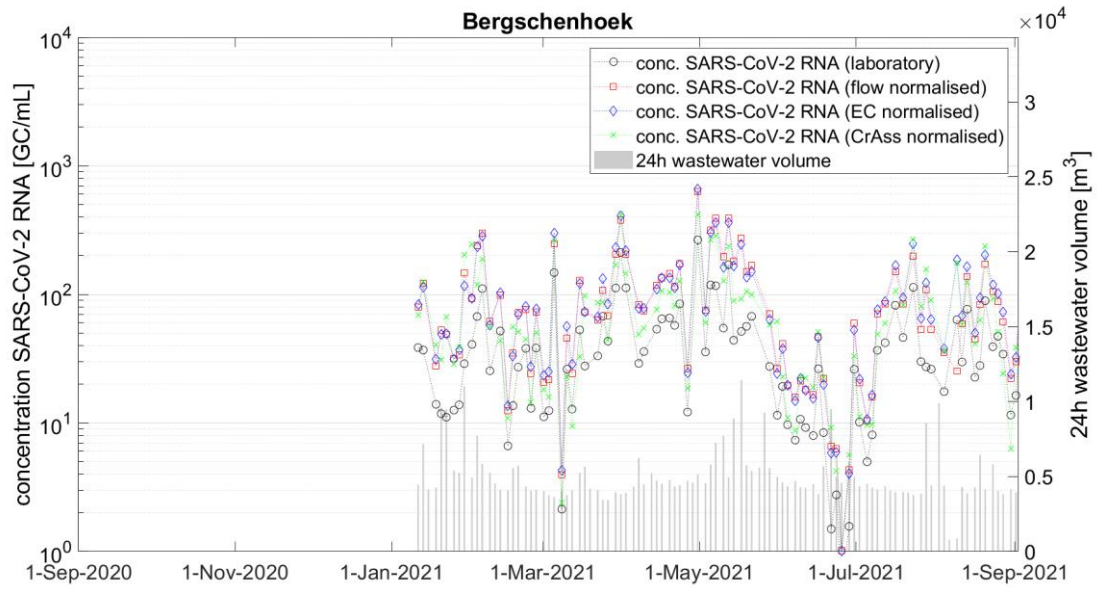
31



32

33 Figure S1.8. SARS-CoV-2 trends in Rozenburg catchment. On left axis lab results, flow normalised,  
34 CrAss normalised and EC normalised, on right axis the daily flow volume.

35

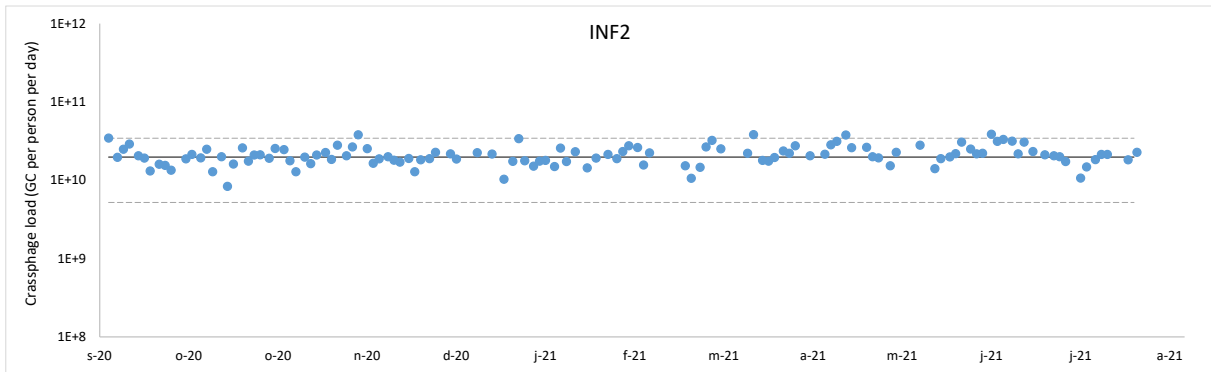


36

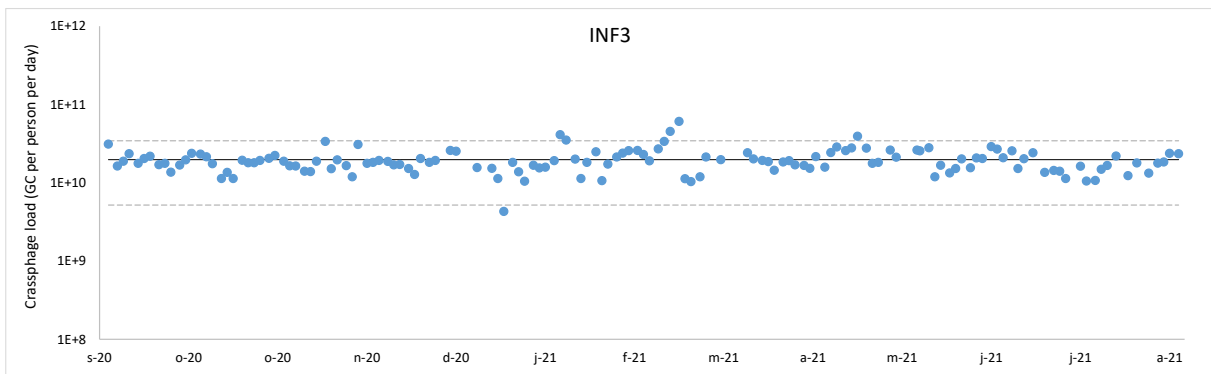
37 Figure S1.9. SARS-CoV-2 trends in Bergschenhoek catchment. On left axis lab results, flow normalised,  
38 CrAss normalised and EC normalised, on right axis the daily flow volume.

39

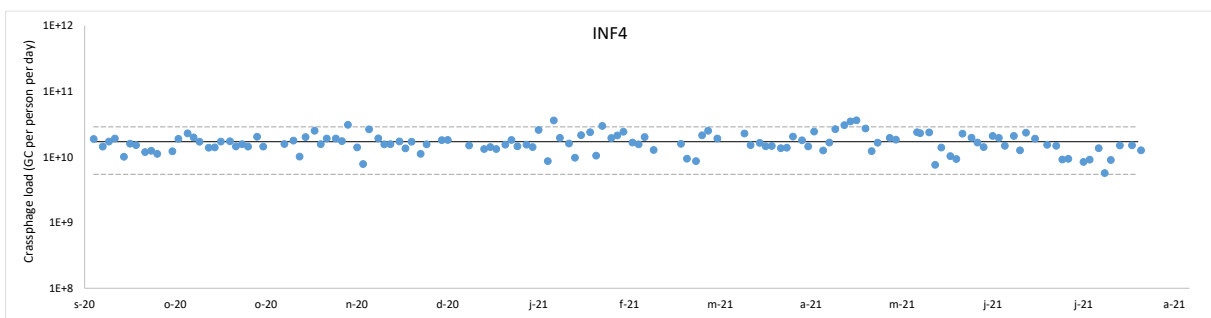
40 S2. Crassphage daily load per person for each catchment



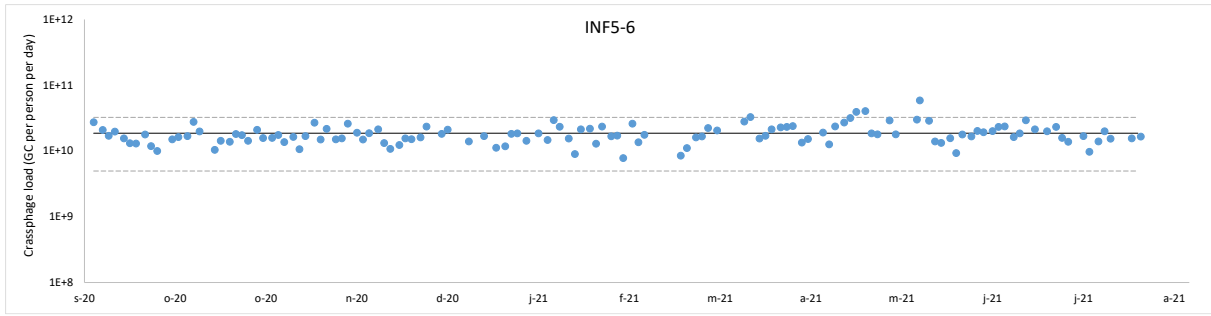
42 Figure S2.1. CrAssphage daily load per person in INF2 catchment. The solid line shows the average  
43 and the dotted lines are the 2s boundaries.



45 Figure S2.2. CrAssphage daily load per person in INF3 catchment. The solid line shows the average  
46 and the dotted lines are the 2s boundaries

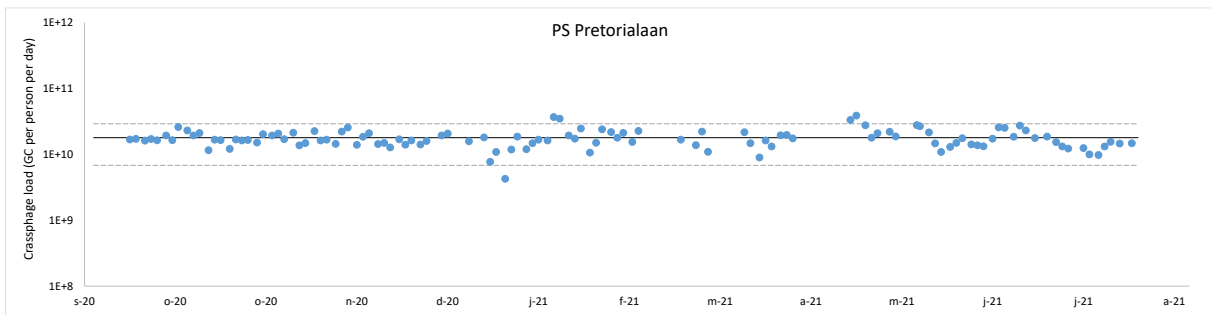


48 Figure S2.3. CrAssphage daily load per person in INF4 catchment. The solid line shows the average  
49 and the dotted lines are the 2s boundaries



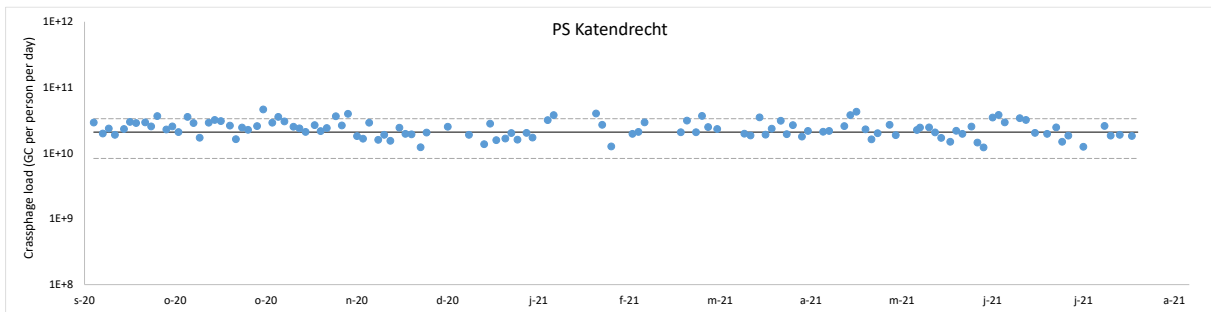
50

51 Figure S2.4. CrAssphage daily load per person in INF5-6 catchment. The solid line shows the average  
 52 and the dotted lines are the 2s boundaries



53

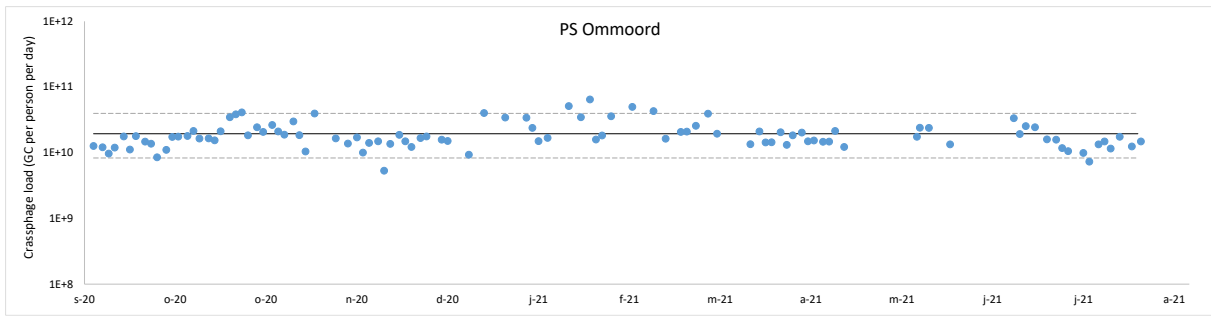
54 Figure S2.5. CrAssphage daily load per person in PS Pretoriaaan catchment. The solid line shows the  
 55 average and the dotted lines are the 2s boundaries



56

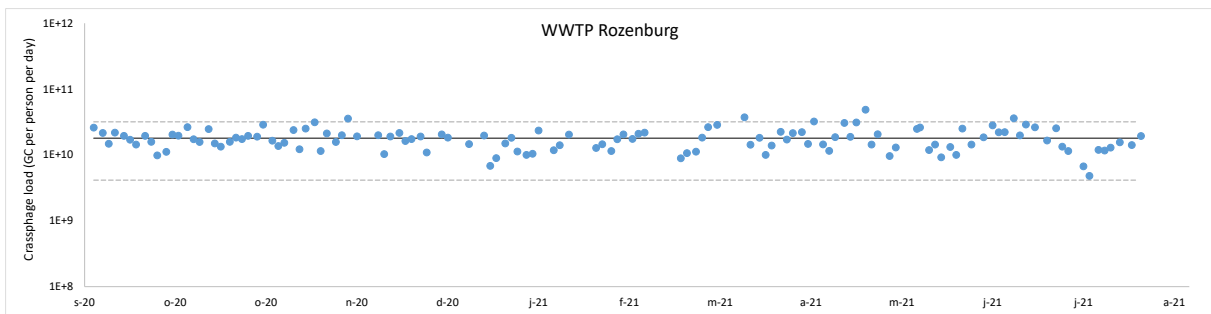
57 Figure S2.6. CrAssphage daily load per person in PS Katendrecht catchment. The solid line shows the  
 58 average and the dotted lines are the 2s boundaries

59



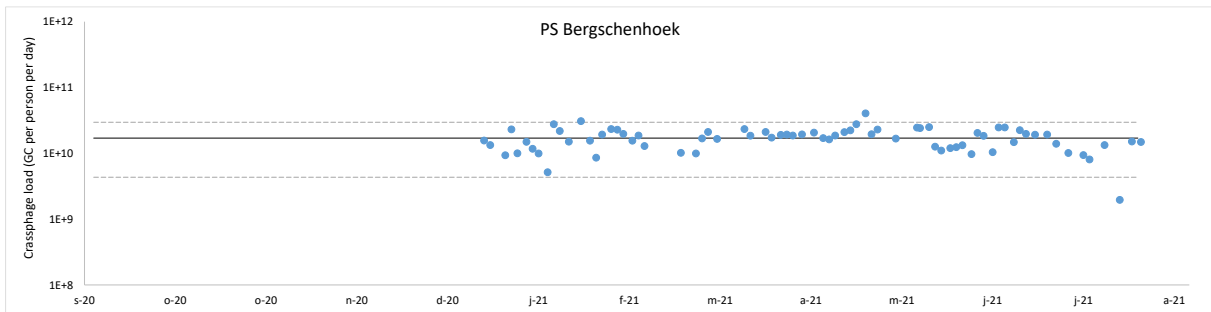
60

61 Figure S2.7. CrAssphage daily load per person in Ps Ommoord catchment. The solid line shows the  
 62 average and the dotted lines are the 2s boundaries



63

64 Figure S2.8. CrAssphage daily load per person in WWTP Rozenburg catchment. The solid line shows  
 65 the average and the dotted lines are the 2s boundaries



66

67 Figure S2.9. CrAssphage daily load per person in PS Bergschenhoek catchment. The solid line shows  
 68 the average and the dotted lines are the 2s boundaries

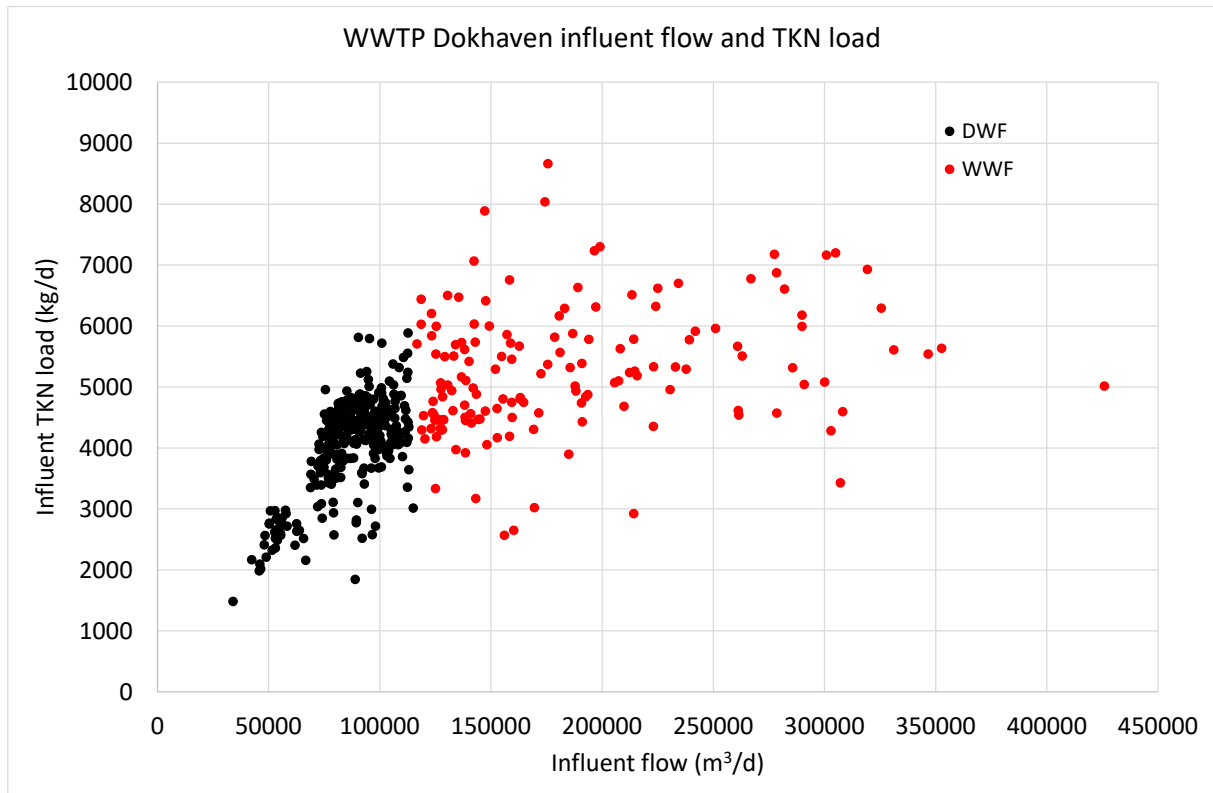
69



70 **S3. Daily loads of standard wastewater parameters versus daily flows**

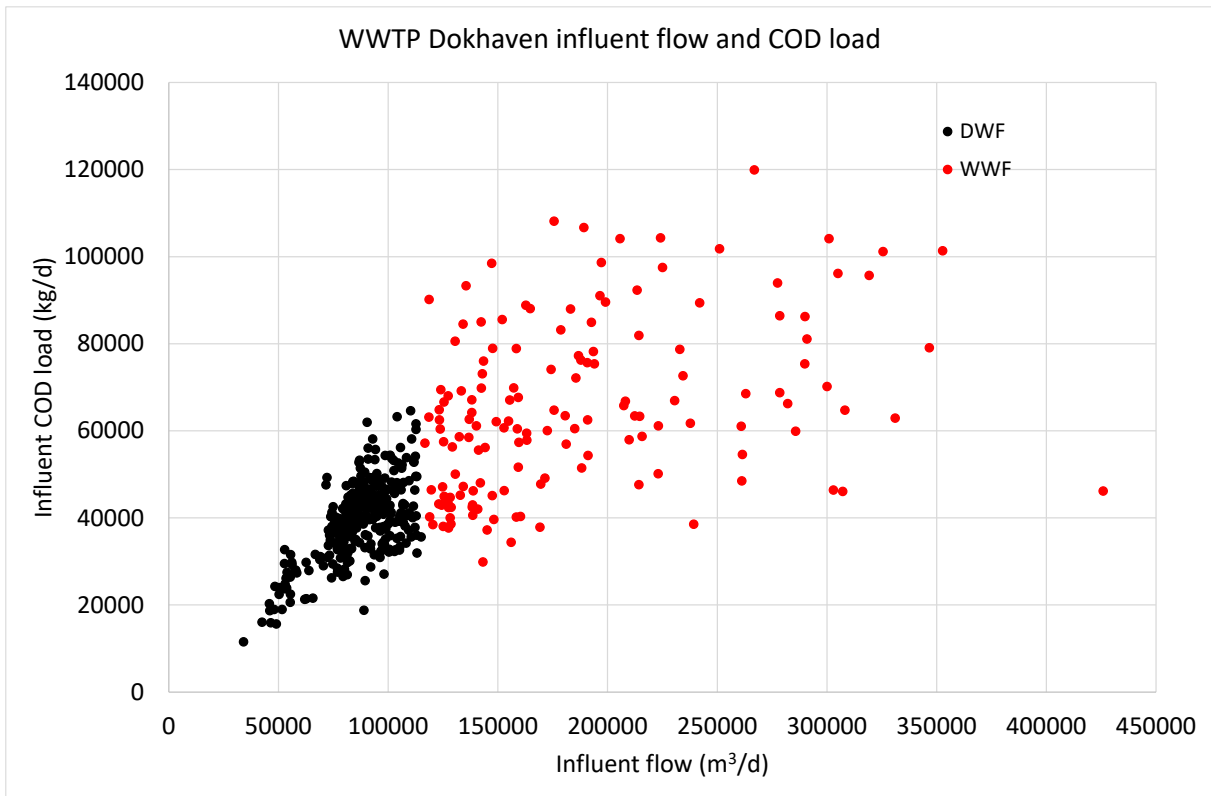
71 The figures in S3 show the relation between daily flow and traditional wastewater parameters for the  
72 influent of wwtp Dokhaven. The load during WWF is higher for all parameters due to in sewer stocks  
73 and, to a minor extent, storm water runoff.

74



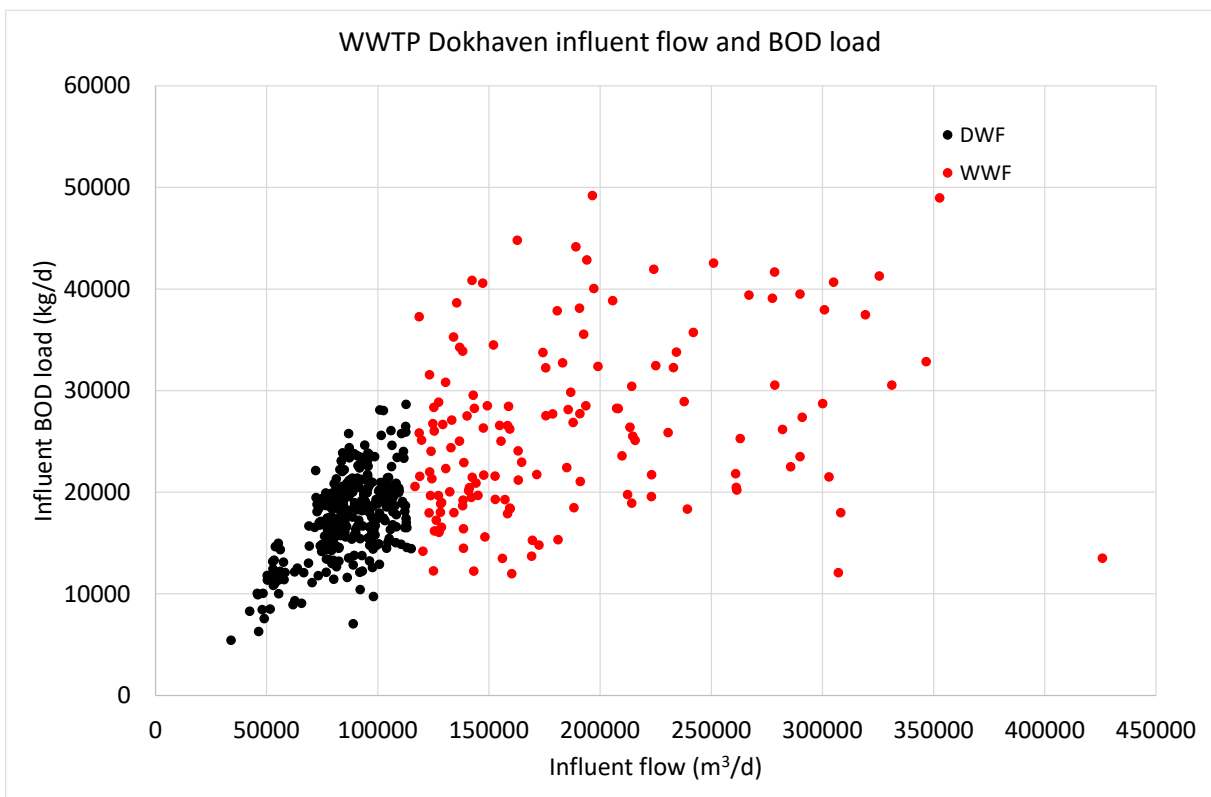
75

76 Figure S3.1. TKN load in influent wwtp Dokhaven. WWF average = 1.3\*DWF average



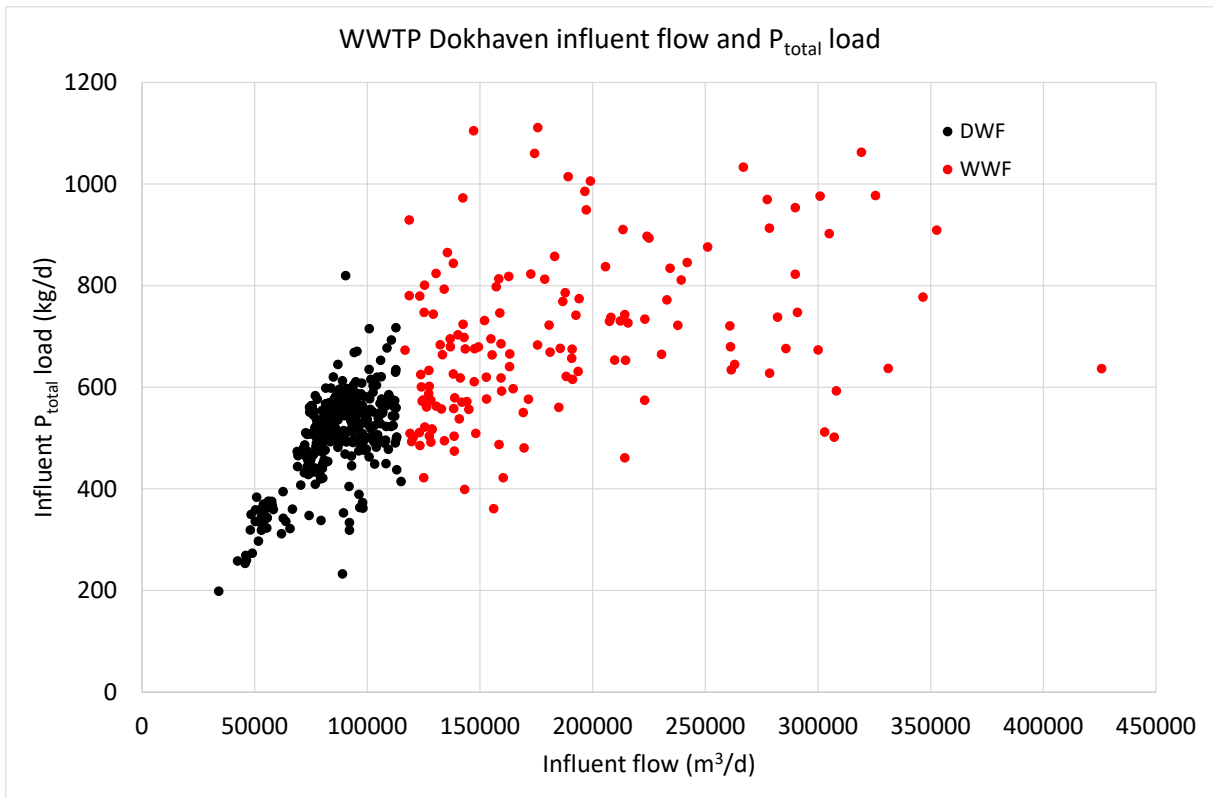
77

78 Figure S3.2. COD load in influent wwtp Dokhaven. WWF average = 1.7\*DWF average



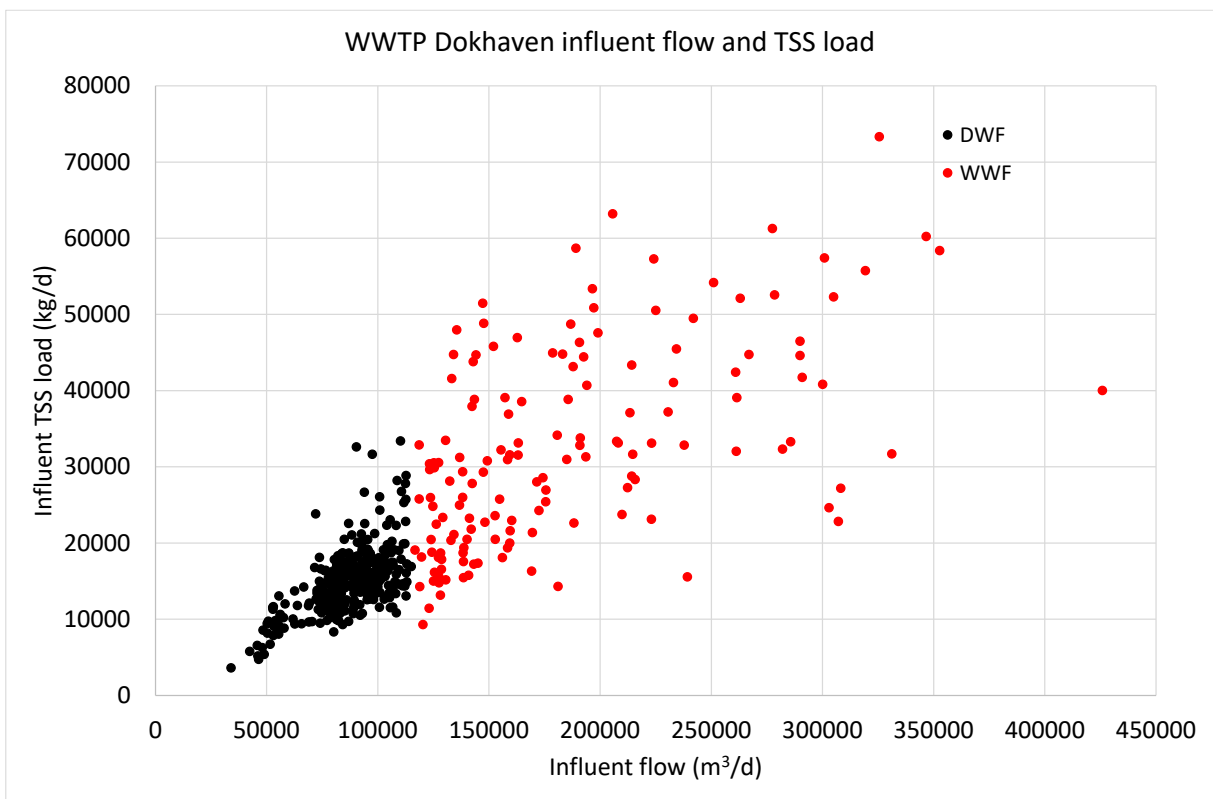
79

80 Figure S3.3. BOD load in influent wwtp Dokhaven. WWF average = 1.5\*DWF average



81

82 Figure S3.4.  $P_{total}$  load in influent wwtp Dokhaven. WWF average = 1.4\*DWF average



83

84 Figure S3.5. TSS load in influent wwtp Dokhaven. WWF average = 2.2\*DWF average

85

