

1 **Impact of the COVID-19 pandemic on the malaria burden in northern Ghana: Analysis**  
2 **of routine surveillance data**

3 *Anna-Katharina Heuschen<sup>1\*</sup>, Alhassan Abdul-Mumin<sup>2</sup>, Martin Nyaaba Adokiya<sup>3</sup>, Guangyu*  
4 *Lu<sup>4</sup>, Albrecht Jahn<sup>1</sup>, Oliver Razum<sup>5</sup>, Volker Winkler<sup>1</sup>, Olaf Müller<sup>1</sup>*

5

6 \*Corresponding author

7

8 1 Institute of Global Health, Medical School, Ruprecht-Karls-University Heidelberg,  
9 Germany

10 2 University for Development Studies, School of Medicine, Department of Pediatrics  
11 and Child Health, Tamale, Ghana

12 3 University for Development Studies, School of Public Health, Department of  
13 Epidemiology, Biostatistics and Disease Control, Tamale, Ghana

14 4 School of Public Health, Medical School, Yangzhou University, China

15 5 Department of Epidemiology and International Public Health, School of Public  
16 Health, Bielefeld University, Germany

17

18 **Abstract**

19 *Introduction:* The COVID-19 pandemic and its collateral damage severely impact  
20 health systems globally and risk to worsen the malaria situation in endemic countries. Malaria  
21 is a leading cause of morbidity and mortality in Ghana. This study aims to analyze routine  
22 surveillance data to assess possible effects on the malaria burden in the first year of the  
23 COVID-19 pandemic in the Northern Region of Ghana.

24            *Methods:* Monthly routine data from the District Health Information Management  
25 System II (DHIMS2) of the Northern Region of Ghana were analyzed. Overall outpatient  
26 department visits and malaria incidence rates from the years 2015 to 2019 were compared to  
27 the corresponding data of the year 2020.

28            *Results:* Compared to the corresponding periods of the years 2015 to 2019, overall  
29 visits and malaria incidence in pediatric and adult outpatient departments in northern Ghana  
30 decreased in March and April 2020, when major movement and social restrictions were  
31 implemented in response to the pandemic. Incidence slightly rebounded afterwards in 2020  
32 but stayed below the average of the previous years. Data from inpatient departments showed  
33 a similar but more pronounced trend when compared to outpatient departments. In pregnant  
34 women, however, malaria incidence in outpatient departments increased after the first  
35 COVID-19 wave.

36            *Discussion:* The findings from this study show that the COVID-19 pandemic affects  
37 the malaria burden in health facilities of Ghana, with declines in in- and outpatient rates.  
38 Pregnant women may experience reduced access to intermittent preventive malaria treatment  
39 and insecticide treated nets, resulting in subsequent higher malaria morbidity. Further data  
40 from other African countries, particularly on community-based studies, are needed to fully  
41 determine the impact of the pandemic on the malaria situation.

42

### 43 **Keywords**

44 COVID-19, pandemic, malaria, sub-Saharan Africa, Ghana, Northern Region, health  
45 information system, surveillance, morbidity, routine data

46

### 47 **Introduction**

48 Malaria remains one of the leading causes of morbidity and mortality in sub-Saharan  
49 Africa (SSA). It is responsible for nearly one quarter of all under five childhood deaths in this  
50 region (1, 2).

51 The global spread of the coronavirus disease 2019 (COVID-19) was declared a Public  
52 Health Emergency of International Concern, which is the highest level of alarm, at the end of  
53 January 2020 (3). Many African governments responded rapidly to this threat by  
54 implementing control measures even before first cases were detected in their countries,  
55 comprising border closures, movement restrictions, social distancing and school closures (4).  
56 By November 2021, there were nearly 6.2 million COVID-19 cases reported from the WHO  
57 African Region, with about 152,000 deaths, mostly from the southern and northern rims of  
58 the continent (5). In the global context, SSA accounts for only about 2.5% and 3% of the  
59 overall reported COVID-19 morbidity and mortality, respectively, while it is home to 17% of  
60 the global population (6-8). This may be explained by factors such as a younger population,  
61 hotter climate, interferences with other infectious diseases, and especially lack of diagnostics  
62 and underreporting (9, 10). Ghana is among the countries with the highest reported COVID-  
63 19 cases (130,920) and deaths (1,209) in western and central SSA, as of November 2021 (8).  
64 COVID-19 vaccinations started in February 2021 but coverage in Ghana is still low with only  
65 2.7% of the population fully vaccinated by November 2021 (11).

66 The socio-economic disruptions associated with the disease and the preventive  
67 measures present huge challenges for health systems and whole societies, especially in low-  
68 and middle income countries (12). In the highly malaria-endemic African countries, the  
69 progress made in malaria control during the last two decades is feared to be reversed by the  
70 side effects of the COVID-19 pandemic (13, 14).

71 This study aims to compare the malaria burden in the Northern Region of Ghana in  
72 the first year of the pandemic to previous years to assess whether a reversal indeed occurred.

73

## 74 **Methods**

### 75 *Study area*

76 Ghana, with its population of about 31 million, lies in western SSA and has a  
77 relatively well functioning health care system (15, 16). Ghana is divided into 16  
78 administrative regions. The Northern Region, with its capital city Tamale, had a population of  
79 1.9 million in 2020. The socio-economic situation of the Northern Region is below the  
80 national average of the country and the region has the highest rate of mortality under the age  
81 of five years (17). The rainy season in northern Ghana, which is usually associated with an  
82 increase in the malaria incidence, lasts from May to October (18).

83 Malaria is highly endemic in Ghana; the country accounts for 2% of the global  
84 malaria morbidity and 3% of the malaria mortality (19, 20). In 2020, malaria was the cause of  
85 34% of all outpatient attendances (21). Treatment expenditures for common diseases like  
86 malaria are covered by a health insurance (22).

87 The first two confirmed COVID-19 cases in Ghana were seen on March 12, 2020; two  
88 days later, all public gatherings were banned. Travel restrictions and border closures were  
89 implemented on March 22, 2020 and the country's major cities were placed under partial  
90 lockdown soon after. Schools were partially reopened on June 21, 2020 and borders were  
91 reopened to international airlines on September 21, 2020 (23). In Ghana, effects of the  
92 COVID-19 pandemic on malaria control interventions concerned the country's stock of  
93 artemisinin-based combination therapies (ACT), the functioning of its insecticide-treated  
94 mosquito net (ITN) routine distribution, and the overall access to primary health care services  
95 and facilities (24).

96

### 97 *Study design and data*

98 This retrospective observational study uses monthly malaria morbidity data on the  
99 overall number of outpatients (interpreted as less severe cases) and inpatients (more severe  
100 cases). Additionally, all outpatient visits (including non-malaria related visits) are analyzed.  
101 Cases were extracted from the district health information management system II (DHIMS2)  
102 on demographic and health parameters of northern Ghana from January 1, 2015, to December  
103 31, 2020. This system was implemented in 2007 with an update in 2012 and has improved the  
104 data quality and completeness since (25).  
105 Malaria diagnosis was based either on the results of rapid diagnostic tests or microscopy.  
106 Mid-year population estimates of the Northern Region of Ghana were also provided through  
107 the DHIMS2.

108

### 109 *Analysis*

110 The data have been processed with Microsoft Excel Version 16.52 and analyzed with  
111 Stata IC Version 16 (Statacorp, College Station, TX, USA). We have calculated and plotted  
112 monthly incidence rates of all outpatient visits and confirmed malaria cases for the year 2020  
113 and as a comparison for the years 2015 to 2019 separately and combined using population  
114 figures of the Northern Region of Ghana. Additionally, we calculated incidence rate ratios  
115 with 95% confidence intervals (95% CI) comparing quarterly incidence rates of 2020 versus  
116 the combined rates of 2015 to 2019. The data allowed analyzing children under five years and  
117 pregnant women separately using the fraction of the under-five population (14% of the  
118 population) and the fraction of women between 15 and 45 years (23% of the population) as  
119 estimates of the respective population denominators (26).

120

### 121 **Results**

	Number	Percentage (%)
outpatient department visits		

It is made available under a [CC-BY 4.0 International license](https://creativecommons.org/licenses/by/4.0/) .

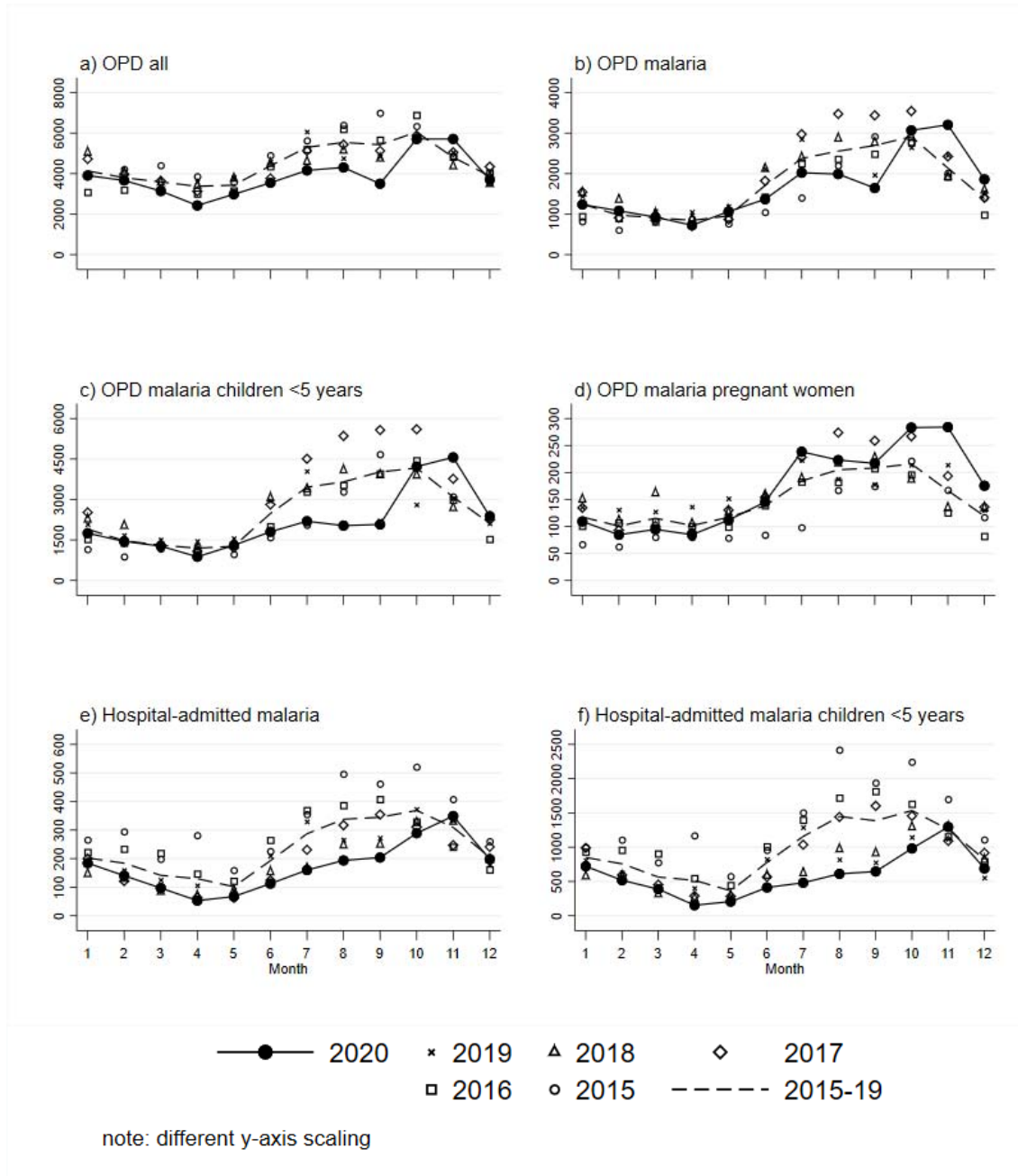
All	5,804,910	100
Malaria confirmed	2,278,296	39
Malaria confirmed among children <5 years	454,779	20
Malaria confirmed among pregnant women	46,693	2
hospital-admitted patients		
Malaria confirmed	295,465	100
Malaria confirmed among children <5 years	165,313	56
mean mid-year population		
Total population	1,842,701	100
Children <5 years*	257,978	14
Women aged 15 to 45*	423,821	23

122 Table 1: Description of the dataset

123

124 Table 1 presents a brief description of the dataset. Altogether 5.8 million outpatient  
125 department visits were reported between 2015 and 2020; 39% of those included a malaria  
126 diagnosis. Of all confirmed malaria cases, 20% were children under the age of five years and  
127 2% were pregnant women. 295,465 patients were hospitalized with diagnosed malaria, 56%  
128 of those were children under the age of five years. The mean population of the years from  
129 2015 to 2020 was 1,842,701 with 14% of children under the age of five years and 23% of  
130 women between the age of 15 and 45 considered as of possible childbearing age.

It is made available under a [CC-BY 4.0 International license](https://creativecommons.org/licenses/by/4.0/).



131

132 Figure 1: Reported monthly incidence rates per 100,000 of the Northern Region, Ghana for  
133 the years 2015 to 2020

134

135 Figure 1 presents the incidence rates of the different outcomes reported in the  
136 Northern Region of Ghana for the years between 2015 and 2020 separately as well as a  
137 combined rate for the period 2015 to 2019. All visits of the outpatient department (OPD) (see  
138 Figure 1a), including also non-malaria patients, have experienced a major decline in

139 March/April 2020, the months where COVID-19 control measures were implemented in the  
140 country, and stayed low during the following months. After a further decrease in September  
141 2020, the numbers increased again in October 2020 to the levels observed in previous years.  
142 This trend is similar but not as pronounced in the general malaria OPD visits (Figure 1b). In  
143 children under the age of five years, the decline in accessing OPD malaria health care is  
144 stronger, especially from June to September 2020 (Figure 1 c). In pregnant women, however,  
145 a different trend with an earlier increase, starting in June and exceeding previous year's  
146 levels, can be observed (Figure 1d). The 2020 numbers of the hospitably admitted malaria  
147 patients stayed below the previous standards from March to October 2020 (Figure 1e); and in  
148 accordance with the OPD figures, this trend is more pronounced in the children under five  
149 years population (Figure 1f).

150

151 Incidence rate ratios (IRR) depicting quarterly measures comparing the rates of 2020  
152 to the combined rate of the years 2015 to 2019 are presented in table 2. General OPD visits  
153 were reduced in the 2<sup>nd</sup> and 3<sup>rd</sup> quarters of 2020 compared to the previous years (IRR 3<sup>rd</sup>  
154 quarter 0.736) with a return to previous standards at the end of the year. The same applies to  
155 the overall malaria cases (IRR 0.742 in the 3<sup>rd</sup> quarter) but with increases in the 4<sup>th</sup> quarter  
156 (IRR 1.265). Ambulatory malaria cases in children under five experienced stronger  
157 reductions compared to previous years with an IRR 0.566 in the 3<sup>rd</sup> quarter of 2020. These  
158 evolutions are not mirrored by the population of pregnant women with malaria infections,  
159 where no major reductions were observed during the first quarters of 2020 compared to  
160 previous years but with an earlier increase (IRR 1.481 in the 4<sup>th</sup> quarter). The situation is  
161 slightly different in malaria infected patients admitted to the hospital. The reductions in the  
162 2<sup>nd</sup> and 3<sup>rd</sup> quarters of 2020 are more pronounced (IRR 0.548 for all ages in the 2<sup>nd</sup> quarter)  
163 and the numbers do not fully recover at the end of the year. Again, as for the outpatient



164 population, this trend is more pronounced in children under five years of age (IRR 0.465 in  
165 the 2<sup>nd</sup> quarter).

166

Outcome	IRR (95% CI) 1 <sup>st</sup> Quarter	IRR (95% CI) 2 <sup>nd</sup> Quarter	IRR (95% CI) 3 <sup>rd</sup> Quarter	IRR (95% CI) 4 <sup>th</sup> Quarter
outpatient department visits				
All	0.930 (0.925-0.934)	0.800 (0.796-0.804)	0.736 (0.732-0.739)	1.026 (1.022-1.030)
Malaria	1.035 (1.026-1.044)	0.899 (0.892-0.907)	0.742 (0.737-0.746)	1.265 (1.258-1.272)
Malaria children <5 years	0.956 (0.937-0.974)	0.806 (0.790-0.823)	0.566 (0.557-0.575)	1.190 (1.176-1.206)
Malaria pregnant women	0.865 (0.815-0.918)	0.957 (0.905-1.011)	1.136 (1.091-1.182)	1.481 (1.424-1.540)
hospital-admitted patients				
Malaria	0.799 (0.780-0.817)	0.548 (0.531-0.565)	0.574 (0.563-0.586)	0.946 (0.930-0.962)
Malaria children <5 years	0.749 (0.726-0.773)	0.465 (0.445-0.486)	0.435 (0.422-0.448)	0.820 (0.800-0.839)

167 Table 2: Quarterly incidence rate ratios (IRR) with 95% confidence intervals (95% CI)  
168 comparing the incidence rates of 2020 with the combined incidence rates of the years 2015 to  
169 2019

170

## 171 Discussion

172 Since the beginning of the COVID-19 pandemic, several modelling studies have predicted  
173 negative collateral effects on the malaria burden in SSA, considering especially disrupted  
174 ITN campaigns and a limited access to antimalarial drugs. The study team of Weiss et al.  
175 created nine scenarios for different reductions of ITN coverage and access to antimalarial  
176 medication as well as regarding effects on malaria morbidity and mortality. As no ITN mass  
177 campaigns were scheduled for 2020 in Ghana, the worst-case scenario would have been a  
178 decline in access to antimalarials by 75% resulting in an increase of malaria morbidity and  
179 mortality by 12.6% and 54.6%, respectively (13). Overall, the predicted public health  
180 relevant effects of the COVID-19 pandemic on malaria include shared clinical disease  
181 manifestations leading to diagnostic challenges, disruptions of the availability of curative  
182 and preventive malaria commodities, significant effects on malaria programs, and in  
183 particular reduced access to malaria health services and health facilities in general (27).

184 In this study, we observed a slight but significant decline in malaria incidence during  
185 the 2<sup>nd</sup> and 3<sup>rd</sup> quarter of 2020 (April to September), and only a rebound to the average levels  
186 of previous years at the end of 2020. This pattern was visible in both, outpatient and inpatient  
187 settings, but more pronounced in the hospitalized population. The same applies to children  
188 and adults, where the reductions were also observed in both groups, but were more marked in  
189 children under five years of age. The marked decline in March/April 2020 can be explained  
190 by the extensive restrictions of movement and gathering and early stay-at-home advices for  
191 COVID-19-like symptoms unless these get severe. Such measures have likely supported the  
192 hesitancy to visit health facilities during the pandemic, which in turn poses a major risk for  
193 developing severe malaria (12, 28). The decline observed in March/April 2020 was even  
194 more remarkable in inpatients. This does not support our initial hypothesis, that in cases of  
195 more severe malaria manifestation, patients were still brought to health facilities and  
196 hospitalized, despite the pandemic. The findings from this analysis support the hypothesis,  
197 that the reported malaria burden in health facilities will shrink due to the effects of the  
198 COVID-19 pandemic in highly malaria-endemic countries (Heuschen et al. 2021). They also  
199 support results of the WHO World Malaria Report (12), and they agree with results of similar  
200 studies from other SSA countries classified as highly endemic for malaria, such as Sierra  
201 Leone, Uganda and the Democratic Republic of the Congo (29-32).

202 The distinct decrease of OPD visits in the health facilities of northern Ghana in  
203 September 2020 may also be explained by unusual heavy floods that started mid-August and  
204 could have further complicated the access to health services. Flooded land is a favorable  
205 habitat for *Anopheles* mosquitos, the malaria vector, what could have led to the observed  
206 increases of malaria incidence in October 2020.

207 Malaria incidence among pregnant women shows a different trend in northern Ghana.  
208 After a decline in reported malaria cases in April 2020, malaria figures have rebounded

209 rapidly in this population and reached even higher levels compared to previous years. The  
210 most likely explanation of such an opposite trend would be the hesitancy of pregnant women  
211 to visit health facilities. This is probably due to the fear of getting infected with COVID-19,  
212 combined with initial disruptions of the provision of intermittent preventive treatment in  
213 pregnancy (IPTp) to women in antenatal care (ANC) services as well as the disruption of  
214 routine distribution of ITNs (33). The disrupted access to and delivery of ANC services is  
215 likely to explain the malaria case trend in April. However, without IPTp and ITNs, more  
216 women were at risk for malaria thereafter, which can explain the subsequent rise in malaria  
217 cases over the following months. Also, many pregnant women probably have sought the  
218 missed ANC after the initial movement restrictions were lifted with subsequent malaria  
219 diagnosis.

220 Ghana had already achieved high levels of ITN coverage, and no ITN mass campaign  
221 was planned for 2020 (12). However, the routine distribution of ITNs, which is usually done  
222 in health facilities during ANC sessions and in primary schools, needed to be adapted to the  
223 COVID-19 measures, which included school closure from March 2020 until January 2021  
224 (34, 35). Also the seasonal malaria chemoprevention intervention for children and the annual  
225 indoor residual spraying of insecticides, which both require physical contact between the  
226 health workers and the community, needed to be modified (36, 37). As another consequence  
227 of the COVID-19 pandemic, the provision of rapid diagnostic tests for malaria is fragile,  
228 which may have led to under-diagnosis of cases (38). Finally, reports of hesitancy to visit  
229 health facilities due to fear of getting infected with COVID-19 are still common (33, 38).  
230 Last but not least, the malaria health care workers capacities were limited due to frequent  
231 reassignments to the control of COVID-19, to stigmatization or absence following  
232 quarantine, or to the development of COVID-19 disease or even death (13, 35, 39).

233           This study has strengths and limitations. A strength of the study is that the data  
234 represent a whole year of follow-up into the pandemic, which provides a more  
235 comprehensive picture of the effects compared to the previous studies with much shorter  
236 study periods. Limitations are that the surveillance system itself may have been affected by  
237 the pandemic, with a bias in the reported numbers. Moreover, it is not clear if the quality of  
238 surveillance data is fully comparable during the five years observed. Finally, much more  
239 people with malaria symptoms may have switched to self-medication during the pandemic,  
240 which may also have an albeit unknown effect on the malaria figures.

241

242           In conclusion, this study shows that the COVID-19 pandemic has been accompanied  
243 by a reduced malaria incidence in northern Ghana's health facilities. Further data from other  
244 African countries and in particular data from community-based studies are needed to fully  
245 judge the impact of the pandemic on the global malaria situation.

246

## 247 **Declarations**

### 248 *Ethics approval and consent to participate*

249           No ethical approval and consent to participate was required as only secondary data  
250 have been used.

251

### 252 *Consent for publication*

253           No consent for publication was required (only secondary data used).

254

### 255 *Availability of data and material*

256           The datasets used and/or analyzed in this study are available from the corresponding  
257 author on reasonable request.

258

259 ***Competing interests***

260 The authors declare that they have no competing interests.

261

262 ***Funding***

263 Anna-Katharina Heuschen acknowledges the support by the Else Kröner-Fresenius-

264 Stiftung within the Heidelberg Graduate School of Global Health.

265

266 ***Authors' contributions***

267 AAM and MNA were responsible for the data collection. AH, VW and OR performed

268 the data analysis. AH wrote the first draft under the supervision of OM, AAM and MNA

269 supported the data interpretation. All authors read, reviewed and approved the final

270 manuscript.

271

272 ***Acknowledgements***

273 We acknowledge financial support by the Else Kröner-Fresenius-Stiftung within the

274 Heidelberg Graduate School of Global Health, by Deutsche Forschungsgemeinschaft within

275 the funding programme Open Access Publishing, by the Baden-Württemberg Ministry of

276 Science, Research and the Arts and by Ruprecht-Karls-Universität Heidelberg.

277

278 ***Bibliography***

279 1. Global Burden of Disease, Viz Hub [Internet]. University of Washington. 2021 [cited  
280 30.04.2021]. Available from: <https://vizhub.healthdata.org/gbd-compare/>.

281 2. Müller O. Malaria in Africa: challenges for control and elimination in the 21st  
282 century; Peter Lang Frankfurt; 2011.

283 3. WHO. Timeline of WHO's response to COVID-19. 2021.

284 4. WHO. Strategic Response to COVID-19 in the WHO African Region. 2021.

285 5. WHO. COVID-19 Situation update for the WHO African Region 14.10.2020. External  
286 Situation Report [Internet]. 2020; 33. Available from:

- 287 [https://apps.who.int/iris/bitstream/handle/10665/336116/SITREP\\_COVID-](https://apps.who.int/iris/bitstream/handle/10665/336116/SITREP_COVID-)  
288 [19\\_WHOAFRO\\_20201014-eng.pdf](https://apps.who.int/iris/bitstream/handle/10665/336116/SITREP_COVID-19_WHOAFRO_20201014-eng.pdf).
- 289 6. Boum Y, Bebell LM, Bisseck A-CZ-K. Africa needs local solutions to face the COVID-19  
290 pandemic. *The Lancet*. 2021;397(10281):1238-40.
- 291 7. WHO. Coronavirus (COVID-19), Africa2021. Available from:  
292 <https://www.afro.who.int/health-topics/coronavirus-covid-19>.
- 293 8. Johns Hopkins University. COVID-19 Global Map 2021 [updated 26.05.2021].  
294 Available from: <https://coronavirus.jhu.edu/map.html>.
- 295 9. Maeda JM, Nkengasong JN. The puzzle of the COVID-19 pandemic in Africa. *Science*.  
296 2021;371(6524):27-8.
- 297 10. Adams J, MacKenzie MJ, Amegah AK, Ezeh A, Gadanya MA, Omigbodun A, et al. The  
298 Conundrum of Low COVID-19 Mortality Burden in sub-Saharan Africa: Myth or Reality?  
299 *Global Health: Science and Practice*. 2021.
- 300 11. Our World in Data. Coronavirus (COVID-19) Vaccinations. In: University of Oxford,  
301 editor. 2021.
- 302 12. WHO. World malaria report 2020: 20 years of global progress and challenges.2020  
303 11.05.2020. Available from: [https://www.who.int/teams/global-malaria-](https://www.who.int/teams/global-malaria-programme/reports/world-malaria-report-2020)  
304 [programme/reports/world-malaria-report-2020](https://www.who.int/teams/global-malaria-programme/reports/world-malaria-report-2020).
- 305 13. Weiss DJ, Bertozzi-Villa A, Rumisha SF, Amratia P, Arambepola R, Battle KE, et al.  
306 Indirect effects of the COVID-19 pandemic on malaria intervention coverage, morbidity, and  
307 mortality in Africa: a geospatial modelling analysis. *Lancet Infect Dis*. 2020.
- 308 14. Sherrard-Smith E, Hogan AB, Hamlet A, Watson OJ, Whittaker C, Winskill P, et al. The  
309 potential public health consequences of COVID-19 on malaria in Africa. *Nat Med*.  
310 2020;26(9):1411-6.
- 311 15. UNDP. Ghana: United Nations Development Programme; 2021 [Available from:  
312 <https://www.gh.undp.org/content/ghana/en/home/countryinfo.html>].
- 313 16. The World Bank. Ghana, Total population 2021 [Available from:  
314 <https://data.worldbank.org/indicator/SP.POP.TOTL?locations=GH>].
- 315 17. UNICEF. Child Protection Baseline Research: Northern Regional Profile2018.  
316 Available from: [https://www.unicef.org/ghana/media/2896/file/CP%20Profile%20-](https://www.unicef.org/ghana/media/2896/file/CP%20Profile%20-%20Northern%20Region.pdf)  
317 [%20Northern%20Region.pdf](https://www.unicef.org/ghana/media/2896/file/CP%20Profile%20-%20Northern%20Region.pdf).
- 318 18. Climate Service Center. Climate Fact Sheet Benin-Ghana-Togo. 2015.
- 319 19. World Health Organization. World malaria report 2020  
320 20 years of global progress & challenges2020. Available from:  
321 <https://www.who.int/publications/i/item/9789240015791>.
- 322 20. United Nations. Ghana: Human Development Indicators 2020 [Available from:  
323 <http://hdr.undp.org/en/countries/profiles/GHA>].
- 324 21. Ghana Health Service. National Malaria Control Programme 2020 [Available from:  
325 <https://www.ghanahealthservice.org/ghs-subcategory.php?cid=4&scid=41>].
- 326 22. Ghana Statistical Service. Ghana Malaria Indicator Survey 20192020. Available from:  
327 <https://dhsprogram.com/pubs/pdf/MIS35/MIS35.pdf>.
- 328 23. Ghana Health Service. COVID-19: Ghana's Outbreak Response Management Update  
329 Accra2020 [Available from: <https://www.ghanahealthservice.org/covid19/>].
- 330 24. RBM Partnership to End Malaria. CRSPC Country Tracker to Mitigate the Effect of  
331 COVID-19 on Malaria: UNOPS; 2020 [updated 03.12.2020. Available from:  
332 [https://endmalaria.org/sites/default/files/CRSPC%20Country%20Tracker%20to%20Mitigate](https://endmalaria.org/sites/default/files/CRSPC%20Country%20Tracker%20to%20Mitigate%20the%20Effect%20of%20COVID-19%20on%20Malaria%20-3%20December%202020.pdf)  
333 [%20the%20Effect%20of%20COVID-19%20on%20Malaria%20-3%20December%202020.pdf](https://endmalaria.org/sites/default/files/CRSPC%20Country%20Tracker%20to%20Mitigate%20the%20Effect%20of%20COVID-19%20on%20Malaria%20-3%20December%202020.pdf).

- 334 25. Adokiya MN, Awoonor-Williams JK, Beiersmann C, Müller O. Evaluation of the  
335 reporting completeness and timeliness of the integrated disease surveillance and response  
336 system in northern Ghana. *Ghana Med J.* 2016;50(1):3-8.
- 337 26. United Nations DoEaSA, Population Division, . *World Population Prospects 2019,*  
338 *Online Edition.* 2019.
- 339 27. Heuschen A-K, Lu G, Razum O, Abdul-Mumin A, Sankoh O, von Seidlein L, et al. Public  
340 health relevant consequences of the COVID-19 pandemic on malaria in sub-Saharan Africa:  
341 A scoping review. *medRxiv.* 2021:2021.06.17.21258914.
- 342 28. Roberts L. Pandemic's fallout on malaria control appears limited so far. *Science.*  
343 2020;369(6506):892.
- 344 29. Buonsenso D, Iodice F, Cinicola B, Raffaelli F, Sowa S, Ricciardi W. Management of  
345 malaria in children under 5-years-old during COVID-19 pandemic in Sierra Leone: a lesson  
346 learned? *medRxiv.* 2020:2020.11.04.20225714.
- 347 30. Bell D, Hansen KS, Kiragga AN, Kambugu A, Kissa J, Mbonye AK. Predicting the Impact  
348 of COVID-19 and the Potential Impact of the Public Health Response on Disease Burden in  
349 Uganda. *Am J Trop Med Hyg.* 2020;103(3):1191-7.
- 350 31. Burt JF, Ouma J, Lubyayi L, Amone A, Aol L, Sekikubo M, et al. Indirect effects of  
351 COVID-19 on maternal, neonatal, child, sexual and reproductive health services in Kampala,  
352 Uganda. *BMJ Global Health.* 2021;6(8):e006102.
- 353 32. Hategeka C, Carter SE, Chenge FM, Katanga EN, Lurton G, Mayaka SM-N, et al.  
354 Impact of the COVID-19 pandemic and response on the utilisation of health services in  
355 public facilities during the first wave in Kinshasa, the Democratic Republic of the Congo. *BMJ*  
356 *Global Health.* 2021;6(7):e005955.
- 357 33. Moyer CA, Sakyi KS, Sacks E, Compton SD, Lori JR, Williams JEO. COVID-19 is  
358 increasing Ghanaian pregnant women's anxiety and reducing healthcare seeking. *Int J*  
359 *Gynaecol Obstet.* 2021;152(3):444-5.
- 360 34. Owusu-Akrofi O. In: *Programme-Ghana NMC,* editor. 2021.
- 361 35. WHO. Interview with Dr Keziah Malm, Programme Manager, National Malaria  
362 Control Programme, Ghana2021. Available from: [https://www.who.int/news-room/feature-](https://www.who.int/news-room/feature-stories/detail/interview-with-dr-keziah-malm-programme-manager-national-malaria-control-programme-ghana)  
363 [stories/detail/interview-with-dr-keziah-malm-programme-manager-national-malaria-](https://www.who.int/news-room/feature-stories/detail/interview-with-dr-keziah-malm-programme-manager-national-malaria-control-programme-ghana)  
364 [control-programme-ghana.](https://www.who.int/news-room/feature-stories/detail/interview-with-dr-keziah-malm-programme-manager-national-malaria-control-programme-ghana)
- 365 36. PMI. Key Malaria Spray Campaigns Continue with Adaptations During COVID-192021.  
366 Available from: [https://www.pmi.gov/key-malaria-spray-campaigns-continue-with-](https://www.pmi.gov/key-malaria-spray-campaigns-continue-with-adaptations-during-covid-19-2/)  
367 [adaptations-during-covid-19-2/.](https://www.pmi.gov/key-malaria-spray-campaigns-continue-with-adaptations-during-covid-19-2/)
- 368 37. USAID. Preventing Malaria in Ghana through Seasonal Malaria  
369 Chemoprevention2021. Available from: [https://www.ghsupplychain.org/news/preventing-](https://www.ghsupplychain.org/news/preventing-malaria-ghana-through-seasonal-malaria-chemoprevention)  
370 [malaria-ghana-through-seasonal-malaria-chemoprevention.](https://www.ghsupplychain.org/news/preventing-malaria-ghana-through-seasonal-malaria-chemoprevention)
- 371 38. RBM Partnership to End Malaria. **Country Tracker to Mitigate the Effect of COVID-19**  
372 **on Malaria** 2021 [Available from:  
373 [https://endmalaria.org/sites/default/files/CRSPC\\_Country\\_Tracker\\_to\\_Mitigate\\_the\\_Effect](https://endmalaria.org/sites/default/files/CRSPC_Country_Tracker_to_Mitigate_the_Effect_of_COVID-19_on_Malaria_11_May_2021.pdf)  
374 [\\_of\\_COVID-19\\_on\\_Malaria\\_11\\_May\\_2021.pdf.](https://endmalaria.org/sites/default/files/CRSPC_Country_Tracker_to_Mitigate_the_Effect_of_COVID-19_on_Malaria_11_May_2021.pdf)
- 375 39. Rogerson SJ, Beeson JG, Laman M, Poespoprodjo JR, William T, Simpson JA, et al.  
376 Identifying and combating the impacts of COVID-19 on malaria. *BMC Med.* 2020;18(1):239.  
377

378