

1 **Title:** Risk factors associated with severe outcomes of COVID-19: A systematic rapid review to inform
2 national guidance on vaccine prioritization in Canada

3 **Authors:** Michelle Gates, PhD¹ (corresponding: michellegates85@gmail.com); Jennifer Pillay, MSc¹;
4 Aireen Wingert, MPH¹; Samantha Guitard, MSc¹; Sholeh Rahman, MSc¹; Bernadette Zakher, MD¹; Allison
5 Gates, PhD¹; Lisa Hartling, PhD¹.

6 **Affiliations:** ¹ Alberta Research Centre for Health Evidence, University of Alberta, Room 4-496 A, 4th
7 Floor Edmonton Clinic Health Academy, 11405-87 Avenue, Edmonton, Alberta, Canada, T6G 1C9

8

9

10

11

12

13

14

15

16

17

18

19

20

21

22

23

24

25 **ABSTRACT**

26 **Background:** To inform vaccine prioritization guidance in Canada, we systematically reviewed evidence
27 on the magnitude of association between risk factors and severe outcomes of COVID-19. The urgent
28 nature of this review necessitated an adapted methodology, which may serve as an exemplar for
29 reviews undertaken under strict timelines.

30 **Methods:** We updated our existing review by searching online databases and websites for cohort
31 studies providing multivariate adjusted associations. After piloting, one author screened studies and
32 extracted data. Two authors estimated the magnitude of association between exposures and outcomes
33 as little-to-no (odds, risk, or hazard ratio <2.0, or >0.50 for reduction), large (2.0-3.9, or 0.50-0.26 for
34 reduction), or very large (≥ 4.0 , or ≤ 0.25 for reduction), and rated the evidence certainty using GRADE.

35 **Results:** Of 11,734 unique records we included 134 reports. There is probably (moderate certainty) at
36 least a large increase in mortality from COVID-19 among people aged 60-69 vs. <60 years (11 studies,
37 $n=517,217$), with ≥ 2 vs. no comorbidities (4 studies, $n=189,608$), and for people with (vs. without): Down
38 syndrome (1 study, $n>8$ million), type 1 and 2 diabetes (1 study, $n>8$ million), end-stage kidney disease
39 (1 study, $n>8$ million), motor neuron disease, multiple sclerosis, myasthenia gravis, or Huntington's
40 disease (as a grouping; 1 study, $n>8$ million). The magnitude of association with mortality is probably
41 very large for Down syndrome and may (low certainty) be very large for age 60-69 years, and diabetes.
42 There is probably little-to-no increase in severe outcomes with several cardiovascular and respiratory
43 conditions, and for adult males vs. females.

44 **Conclusion:** There is strong evidence to support at least a large increase in mortality from COVID-19
45 among older adults aged 60 to 69 years versus <60 years; people having two or more versus no
46 comorbidities; and for people affected by several pre-existing conditions. The methodology employed in
47 this review may provide an important exemplar for future syntheses undertaken under urgent timelines.

48 **Systematic review registration:** PROSPERO #CRD42021230185.

49 **Keywords:** Systematic review, COVID-19, coronavirus, risk factors

50

51 **INTRODUCTION**

52 The novel coronavirus disease 2019 (COVID-19) became a worldwide public health concern in early 2020
53 [1]. About 20% of affected people experience severe disease (e.g., requiring hospitalization) [2], and
54 some may have long-lasting symptoms or medical complications [3]. In late 2020, Health Canada
55 approved two vaccines for the prevention of COVID-19 (Pfizer-BioNTech COVID-19 Vaccine and Moderna
56 COVID-19 Vaccine); this was been followed by the approval of others and continued review of emerging
57 vaccine candidates [4]. As anticipated, vaccine distribution in Canada was initially constrained by
58 logistical challenges and limited supply [5-7], necessitating prioritization of populations for vaccination
59 [6, 7].

60

61 The National Advisory Committee on Immunization (NACI) developed preliminary vaccine prioritization
62 guidance in late 2020 *“for the efficient, effective and equitable allocation of safe, efficacious severe*
63 *acute respiratory syndrome coronavirus 2 (SARS-CoV-2) vaccines in the context of staggered arrival of*
64 *vaccines”* [6, 7]. In addition to reviewing evidence on the burden of illness and vaccine characteristics,
65 NACI used its Ethics, Equity, Feasibility and Acceptability (EEFA) framework [8] and evidence-informed
66 Equity Matrix [9] to achieve the goal of their prioritization guidance. The Equity Matrix considers
67 biological and social risk factors (termed P²ROGRESS And Other Factors, informed by the PROGRESS-Plus
68 model [10]) that may result in inequitable health outcomes across a population. The findings of a rapid
69 review of risk factors for severe outcomes of COVID-19 conducted by our research group [11] helped
70 populate the Equity Matrix, and informed NACI’s guidance. This initial review found increasing age (>60
71 years and particularly >70 years) to be among the strongest risk factors for severe outcomes of COVID-
72 19 [11].

73

74 By early 2021, numerous additional relevant primary studies had been published. To inform subsequent
75 guidance statements [12, 13], we updated our rapid review to determine the magnitude of association
76 between P²ROGRESS And Other Factors and severe outcomes of COVID-19. Though vaccines for COVID-
77 19 are now widely available to Canadians, this review serves an important archival function in informing
78 vaccine prioritization in regions where distribution is less far along. The methodology used in this review
79 may serve as an exemplar for similar high-priority scenarios where syntheses of large volumes of data
80 from primary studies are needed on expedited timelines.

81

82 **METHODS**

83 **Review Approach**

84 Detailed methods are in our pre-defined protocol (PROSPERO #CRD42021230185), and described briefly
85 herein. We followed traditional systematic review methods [14] with modifications to accommodate the
86 expedited timeline needed to inform NACI's guidance. Single experienced reviewers selected studies
87 and extracted data, with piloting to maintain rigour. We restricted the scope to large (>1,000
88 participants) studies with a high relevance to Canada.

89

90 The eligibility criteria were informed by stakeholders at NACI and the Public Health Agency of Canada;
91 these individuals were not involved in review conduct. This review is reported according to the
92 Preferred Reporting Items for Systematic Reviews and Meta-Analyses (PRISMA) statement [15].

93

94 **Eligibility criteria**

95 Table 1 details our eligibility criteria. We included published (or accepted for publication) cohort studies
96 reporting multivariate adjusted associations between P²ROGRESS And Other Factors (including but not

97 limited to age; gender identity or sex; disease/condition or disability; number of comorbidities; social
98 factors; other factors such as health behaviours) and severe outcomes of COVID-19 among: the general
99 population; people with COVID-19; people hospitalized with COVID-19; people with severe COVID-19 (as
100 defined by study authors; typically in an intensive care unit and/or mechanically ventilated); children in
101 any of the aforementioned populations. Outcomes of interest were: hospitalization; in-hospital length of
102 stay; ICU admission; ICU length of stay; mechanical ventilation; mortality (all-cause or case fatality);
103 severe disease (composite outcomes as defined by study authors, most often combining mortality with
104 ICU admission and/or mechanical ventilation); need for rehabilitation; stroke; kidney, liver, or cardiac
105 injury; generic functionality and/or disability (composite scores of validated scales); generic quality of
106 life (composite scores of validated scales). For age, we included data from all relevant comparisons,
107 however were interested specifically in the comparison of age 60-69 years vs. <60 years, as our previous
108 review already showed older age (particularly >70 years) to be among the strongest risk factors for
109 severe outcomes of COVID-19 [11]. Canadian reports of any design with any analysis type were eligible.
110 For social risk factors, we included only Canadian reports because these were considered as most
111 relevant by NACI.

112

113 [Table 1]

114

115 We applied criteria at the selection stage to include only the most informative studies. Studies needed
116 to take place in Organization for Economic Cooperation and Development (OECD) countries and include
117 $\geq 1,000$ participants (i.e., suitable for multivariate adjustment). Adjustment by age and sex was required
118 in all studies, except Canadian reports. Findings for age and/or sex required adjustment for at least one
119 pre-existing condition, and findings for most pre-existing conditions required adjustment for body mass
120 index (BMI). After screening, we loosened our selection criteria for studies among children, requiring a

121 sample size of ≥ 300 participants and adjustment by age and sex (but not BMI), as limited evidence was
122 available for this population.

123

124 When no primary studies were located on a risk factor of high relevance to NACI, we included systematic
125 reviews with broader selection criteria.

126

127 **Literature search and study selection**

128 Full details of the literature search are in Additional file 1. A research librarian searched online databases
129 (Ovid Medline® ALL 1946-, Epistemonikos COVID-19 in L-OVE Platform

130 [<https://app.iloveevidence.com/loves>] for individual predictors of outcomes; 2-3 December 2020) and

131 websites suggested by NACI (6 January - 3 February, 2021). We updated the Medline and website

132 searches in April 2021 for the pediatric population, immune compromise, and autoimmune conditions,

133 to further inform NACI's guidance for risk factors. We exported records to Endnote X9 (Clarivate

134 Analytics, Philadelphia, PA), removed duplicates and pre-prints, then uploaded the records to Covidence

135 systematic review platform (<https://www.covidence.org/>). After piloting (i.e., practice round with all

136 team members), a single experienced reviewer screened each record by title and abstract, then by full

137 text. A second reviewer was consulted if assistance was required to determine whether a study met the

138 selection criteria.

139

140 Following screening, gaps in evidence (i.e., no study meeting our criteria) were apparent for

141 asplenia/splenic dysfunction, cystic fibrosis, sickle cell disease, β -thalassemia, and learning disability

142 (potentially important based on inclusion in priority lists from other jurisdictions [16-19]). To locate

143 evidence for these, we scanned all studies excluded based on sample size ($< 1,000$ participants),

144 preprints, and systematic reviews that we had located during our scoping exercises (September, 2020)

145 using Smart Searches in Endnote. On 18 February 2021, we conducted targeted searches in Ovid
146 Medline® ALL 1946- for studies and reviews on these risk factors.

147

148 **Data extraction**

149 After piloting (i.e., practice round with all team members), a single reviewer extracted data from each
150 study into Excel (v. 2016; Microsoft Corporation, Redmond, WA): study and population characteristics,
151 exposures, covariates, outcomes and their definitions, findings for multivariate associations. We held
152 regular team meetings to troubleshoot and ensure consistency. A second reviewer was consulted to
153 review and confirm ambiguous data presented within the included studies.

154

155 **Quality assessment**

156 Because we attempted to include only good quality studies (i.e., large sample size and with adequate
157 multivariate adjustment), we did not assess their quality using a formal tool. Instead, we recorded
158 potential risk of bias concerns (Additional file 2) during data extraction, and considered these during our
159 assessment of the certainty of evidence. The items (potential concerns) recorded included but were not
160 limited to: (a) lack of adjustment for social factors; (b) the expectation of attenuated magnitude of
161 association when the model was adjusted for laboratory values and/or symptoms; (c) for the
162 hospitalization outcome, potential for testing bias in certain populations (e.g., healthcare providers),
163 where the exposure group may have had less severe disease than those not exposed; (d) use of
164 historical, potentially inaccurate, data for risk factors or covariates.

165

166 **Synthesis and drawing conclusions**

167 Additional file 2 details our approach to synthesis and drawing conclusions. Results from the Canadian
168 studies, none of which met the criteria of having sufficiently adjusted analysis, were not included in the

169 main synthesis and are reported separately. We did not pool findings statistically for any outcome, due
170 to large heterogeneity in comparisons and measures of association, and at least some overlap in
171 populations across studies. Instead, two reviewers reached consensus on a best estimate of the
172 magnitude of association for each outcome-comparison across the relevant studies (based on adjusted
173 odds [aOR], risk, or hazard ratios): little-to-no (<2.0, or >0.5 for reduction), large (2.0-3.9, or 0.5-0.26 for
174 reduction), or very large (≥ 4.0 , or ≤ 0.25 for reduction). Two reviewers assessed the certainty of evidence
175 for each exposure-outcome association, informed by elements of the Grading of Recommendations,
176 Assessment, Development and Evaluation approach [20], and agreed on the final rating. Given our focus
177 on prognostic variables, findings from observational studies for each outcome-comparison started at
178 high certainty [21], and were rated down for concerns related to risk of bias, inconsistency, imprecision,
179 and indirectness [20].

180

181 **RESULTS**

182 **Included studies**

183 Of 11,734 unique records identified, we included 134 reports (Figure 1) [22-155]. Full text exclusions are
184 listed at [<https://doi.org/10.7939/DVN/W1M6OP>]. We included one systematic review of case series for
185 β -thalassemia [142]. No studies or reviews were located with relevant findings for asplenia/splenic
186 dysfunction, cystic fibrosis, sickle cell disease, or learning disability. No study reported on long-term
187 outcomes. Table 2 shows a summary of the characteristics of the studies presenting multivariate
188 adjusted findings that were included in the main synthesis (n=123) [22-144]; full details by study,
189 including 11 Canadian reports [145-155], are in Additional file 3. The studies contributing multivariate
190 associations originated primarily from the United States (n=55), the United Kingdom (n=15), and Mexico
191 (n=12), and included more than 76 million participants (median 5,279; range 34 to 61,414,470).

192

193 [Figure 1]

194 [Table 2]

195

196 **Associations between risk factors and outcomes**

197 Based on stakeholder input, we considered people with confirmed COVID-19 to be the population of

198 highest relevance, thus have focused on these in our presentation of findings. When no data were

199 available from the COVID-19 population for a risk factor-outcome comparison, we relied on findings

200 from the general population. Table 3 summarizes the risk factors showing large or very large

201 multivariate-adjusted associations with severe outcomes. Additional file 2 includes findings for all risk

202 factors and populations investigated in the review. Data supporting the conclusions, including precise

203 associations presented in each included study, are available at

204 [<https://doi.org/10.7939/DVN/W1M6OP>].

205

206 [Table 3]

207

208 The certainty of evidence was moderate for at least a large increase in mortality from COVID-19 for

209 people aged 60-69 years versus <60 years (11 studies, n=517,217) [27, 57, 72, 78, 82, 97, 112, 113, 118,

210 121, 127, 135], people with two or more versus no comorbidities (4 studies, n=189,608) [57, 68, 121,

211 126], and for people with (versus without): Down syndrome (1 study, n>8 million) [41], type 1 and 2

212 diabetes (1 study, n>8 million) [41], end-stage kidney disease (1 study, n>8 million) [41]; motor neuron

213 disease, multiple sclerosis, myasthenia gravis, or Huntington's disease (as a grouping; 1 study, n>8

214 million) [41]. The magnitude of association with mortality is probably (moderate certainty) very large for

215 Down syndrome, and may (low certainty) be very large for age 60-69 years, and diabetes. We located no

216 evidence on the combination of conditions that would place people with two or more comorbidities at
217 increased risk.

218

219 The certainty of evidence was low for a large increase in mortality or hospitalization among: people with
220 cerebral palsy (1 study, n>8 million); major psychiatric disorder (schizophrenia, schizoaffective disorder,
221 or bipolar disorder, with drug use for the condition in the past 6 months; 1 study, n=11,122) [126];
222 obesity class III (BMI ≥ 40 kg/m²) versus normal weight (1 study, n=1,612) [135]; Parkinson's disease (1
223 study, n>8 million) [41]; sickle cell disease or severe immunodeficiency (1 study, n>8 million) [41]; solid
224 organ transplant (2 studies, n=18,038 for mortality [126, 135]); transplant of any type (3 studies,
225 n=24,227 for hospitalization [58, 74, 126]); kidney transplant (1 study, n>8 million) [41]; recent bone
226 marrow or stem cell transplant (1 study, n>8 million) [41]; metastatic cancer among those <70 years (2
227 studies, n=38,377) [67, 135]; current or recent (past year) chemotherapy or radiotherapy (past 6
228 months; 1 study, n>8 million); vasculitis (1 study, n=4,543,249) [42]; pregnancy (any stage; 1 study,
229 n=409,462) [40]; frailty (2 studies, n=404,079) [89, 115]. The magnitude of association with mortality
230 may (low certainty) be very large for recent chemotherapy. There was moderate certainty for a large
231 increase in hospitalization with previous cerebrovascular accident (2 studies, n=12,376) [58, 138].

232

233 Among children, there was evidence of moderate certainty for a large increase in hospitalization among
234 those having two or more versus no chronic conditions (1 study, n=804) [52], and evidence of low
235 certainty for a large increase in mortality and hospitalization for children of Black versus White non-
236 Hispanic race/ethnicity (1 study, n=12,198) [106]. There was low certainty for a large reduction in
237 hospitalization for children 0-19 years versus adults aged 50-59 years (1 study, n=2,199) [126], and a
238 large increase in hospitalization for children with one versus no chronic conditions (1 study, n=790) [52],
239 and specifically for children with versus without immunodeficiency or immunosuppression (2 studies,

240 n=21,875) [55, 94], and hypertension (1 study, n=21,116) [94]. Additionally, there was evidence of low
241 certainty for a large increase in severe outcomes (ICU admission, mechanical ventilation, or ‘severe
242 disease’) among children with versus without: one or more chronic conditions (1 study, n=759 for
243 mechanical ventilation and severe disease [55]; 2 studies, n=1,341 for ICU admission), asthma (1 study,
244 n=21,116) [94], endocrine conditions (1 study, n=5,374) [32], metabolic conditions (1 study, n=5,374
245 [32], and malignancy (1 study, n=5,374) [32].

246

247 There were several risk factors with moderate certainty evidence for little-to-no association with
248 increased severity of COVID-19, for example many pre-existing conditions (notably several
249 cardiovascular and respiratory conditions), and for adult males versus females (Additional file 2).

250

251 Table 4 shows the risk factors identified in Canadian reports and potential associations with severe
252 outcomes of COVID-19. All data collected from these studies are in Additional file 2. This evidence was
253 used primarily to draw conclusions about social factors, and was often descriptive and lacking
254 adjustment for important covariates. These studies showed the potential for a large increase in
255 mortality among people living in long-term care (6 reports, n≈2 million) [145, 146, 148, 151, 153], visible
256 minority groups (mainly South Asian, Chinese, Black, Filipino, Latin American, Arab, Southeast Asian,
257 West Asian, Korean, Japanese; 1 report, n=8,796) [154], and people living in the general population (off-
258 reserve) versus First Nations people living on-reserve (1 report, n=9,715) [147].

259

260 [Table 4]

261

262 **DISCUSSION**

263 This rapid systematic review provides a methodologically rigorous synthesis of a large volume of
264 emerging evidence on factors associated with severe outcomes of COVID-19. We identified strong
265 (moderate certainty) evidence of at least a large increase in mortality from COVID-19 among people
266 aged 60 to 69 versus <60 years (and over 70 years from our previous review [140]), people having two or
267 more versus no comorbidities, and for people affected by (versus unaffected): Down syndrome; type 1
268 and type 2 diabetes; end-stage kidney disease; motor neuron disease, multiple sclerosis, myasthenia
269 gravis, or Huntington’s disease.

270

271 Our earlier review suggested a potentially large increase in severe outcomes among males versus
272 females, and for people with some pre-existing conditions (heart failure, dementia, liver disease) [11].
273 The evidence from the present review no longer supports this increased risk, underscoring the
274 importance of interpreting low certainty evidence cautiously, and of continually reviewing emerging
275 data to support vaccine prioritization guidance. Our update found relatively strong evidence for little-to-
276 no increase in severe outcomes for several pre-existing diseases, notably many cardiovascular and
277 respiratory conditions. In contrast, many jurisdictions have identified people with these conditions as
278 priorities for vaccination [16-19]. The reason for this is not fully clear, because the evidence on which
279 prioritization decisions are made is often not publically available, and such decisions are informed by
280 multiple considerations (e.g., local epidemiology, ethics, risk-benefit analyses, vaccine characteristics
281 and availability [6, 7, 156]) and varying levels of evidence.

282

283 A large reliance on unadjusted data may provide some explanation [157]. The data synthesized within
284 this review have the advantage of accounting for the impact of multiple co-existing conditions, social
285 and demographic factors. For example, in a large study (n=418,794) of the general population in the
286 United Kingdom [114], a large increase in hospitalization among people with heart failure (OR 2.24) and

287 chronic obstructive pulmonary disease (OR 2.67) was observed. Following adjustment for age, sex, social
288 factors, BMI, and other chronic conditions, these associations were substantially attenuated to the
289 range of little-to-no association (aOR 1.09 and 1.51, respectively) [114]. We observed similar
290 relationships in other studies. The thresholds of magnitude used to define ‘large’ and ‘very large’
291 increases in severe outcomes may also impact the conditions prioritized. Finally, there are some rare
292 conditions (e.g., thalassemia, splenic dysfunction) for which to our knowledge, no large and well-
293 adjusted studies have been published. In these cases, governing bodies may need to rely on evidence
294 available for other infectious diseases, or from smaller cohorts suggesting the potential for increased
295 risk [19, 158-161].

296

297 The findings of this review, among other considerations, have informed NACI’s vaccine prioritization
298 guidance. Though access to COVID-19 vaccines is now widespread in Canada, this review continues to
299 serve an important archival function. Our findings, particularly the developments that occurred between
300 our first review and the present one, underscore the importance of continuing to review emerging data
301 to provide up-to-date evidence of the highest possible certainty in times when urgent decision-making is
302 required (e.g., pandemics, emergencies). As an exemplar, at the time of our first review, few large, well-
303 adjusted analyses were available for children, who were not a population of high priority at that time.
304 However, in our latest update in April 2021, we located six new eligible studies that helped NACI to
305 develop evidence-informed guidance [32, 52, 55, 106, 123, 152]. Using the adapted methodology
306 described herein, we were able to provide timely empirical evidence to inform decision-making without
307 compromising aspects of rigour that were important to relevant stakeholders. This review may
308 therefore serve as an exemplar for abbreviated methodologies that may be undertaken to inform
309 decision-making in urgent situations.

310

311 **Limitations**

312 Because we used a rapid approach, there is a possibility of undetected errors in study selection or data
313 extraction. We mitigated this through piloting and engaging experienced reviewers. It was not
314 appropriate to pool the findings due to substantial heterogeneity and at least some overlap in
315 populations across studies; thus, it is possible that the qualitative estimates of measures of association
316 across studies may have been over- or underestimated. Though the findings are most applicable to
317 OECD countries, we often relied on data largely from the United States and other countries without
318 universal healthcare systems. We located no evidence relevant to long-term outcomes that met our
319 selection criteria.

320

321 **Conclusion**

322 There is strong evidence to support at least a large increase in mortality from COVID-19 among older
323 adults aged 60 to 69 years versus <60 years; people having two or more versus no comorbidities; and for
324 people affected by Down syndrome; type 1 and 2 diabetes; end-stage kidney disease; and motor neuron
325 disease, multiple sclerosis, myasthenia gravis, or Huntington’s disease (as a grouping). The methodology
326 employed in this rapid systematic review may provide an important exemplar for future syntheses
327 undertaken under urgent timelines.

328

329 **FIGURE TITLES AND LEGENDS**

330 Figure 1. flow of records through the selection process

331

332 **ADDITIONAL FILES**

333 **Name: Additional file 1**

334 Format: .docx

335 Title: Search strategy

336 Description: Search strategy used to locate records for the systematic review

337

338 **Name: Additional file 2**

339 Format: .docx

340 Title: Approach to synthesis and all results

341 Description: Approach to data synthesis and full results for all populations analyzed

342

343 **Name: Additional file 3**

344 Format: .docx

345 Title: Detailed study characteristics

346 Description: Characteristics of the included studies

347

348 **LIST OF ABBREVIATIONS**

349 aOR adjusted odds ratio

350 BMI body mass index

351 COVID-19 novel coronavirus disease 2019

352 ICU intensive care unit

353 RT-PCR reverse transcription polymerase chain reaction

354 NACI National Advisory Committee on Immunization

355 OECD Organization for Economic Cooperation and Development

356

357 **DECLARATIONS**

358 **Ethics approval and consent to participate**

359 Not applicable.

360

361 **Consent for publication**

362 Not applicable.

363

364 **Availability of data and materials**

365 The data pertaining to the conclusions are available on reasonable request using the following link:

366 <https://doi.org/10.7939/DVN/W1M6OP>.

367

368 **Competing interests**

369 The authors have no competing interests to declare. Michelle Gates and Allison Gates are employees of
370 the Canadian Agency for Drugs and Technologies in Health (CADTH). The current work was unrelated to
371 their employment and CADTH had no role in the funding, design, or oversight of the work.

372

373 **Funding**

374 This study was completed under contract to the Public Health Agency of Canada, contract #4600001536.
375 LH is supported by a Tier 1 Canada Research Chair in knowledge synthesis and translation. The funders
376 had no role in the design of the study, data collection and analysis, preparation of the manuscript, nor
377 decision to submit for publication.

378

379 **Authors' contributions**

380 MG contributed to the conception and design of the work, selection of studies, data extraction, analysis
381 and interpretation of data, and drafted the initial version of the manuscript. JP contributed to the
382 conception and design of the work, analysis and interpretation of data, and revised versions of the

383 manuscript. AW, SG, SR, BZ, and AG contributed to the selection of studies, data extraction, organizing
384 data for analysis, and revised versions of the manuscript. LH contributed to the conception and design of
385 the work, methodological oversight, interpretation of findings, and revised versions of the manuscript.
386 All authors approved of the final version of the manuscript submitted and agree to be accountable for
387 all aspects of the work.

388

389 **Acknowledgements**

390 We thank Kelsey Young, Kelly Farrah, Shainoor Ismail, and Matthew Tunis from the NACI Secretariat for
391 expert input into the review's scope and eligibility criteria, and for reviewing the initial draft of the
392 manuscript; Sharon Bartholomew, Louise McRae, Anne-Marie Robert, Samina Aziz, Alain Demers,
393 Catherine Pelletier, Cynthia Robitaille, Larry Shaver, Helene Gardiner, and Dianne Zakaria from the
394 Public Health Agency of Canada for input into the necessary adjustment variables for analyses of chronic
395 diseases; Elizabeth Dennett and Erica Wright for developing and running literature searches; Andrew
396 Beck for assistance with screening; and Mackinna Hauff for article retrieval and document formatting.

397

398 **REFERENCES**

- 399 1. World Health Organization. Coronavirus Disease 2019 (COVID-19): Situation Report - 51. Geneva,
400 Switzerland: World Health Organization; 2020. Available from: [https://www.who.int/docs/default-](https://www.who.int/docs/default-source/coronaviruse/situation-reports/20200311-sitrep-51-covid-19.pdf)
401 [source/coronaviruse/situation-reports/20200311-sitrep-51-covid-19.pdf](https://www.who.int/docs/default-source/coronaviruse/situation-reports/20200311-sitrep-51-covid-19.pdf)
- 402 2. World Health Organization. What we know about long-term effects of COVID-19: the latest on the
403 COVID-19 global situation & long-term sequelae; update 36. Geneva, Switzerland: World Health
404 Organization; 2020. Available from: [https://www.who.int/docs/default-source/coronaviruse/risk-](https://www.who.int/docs/default-source/coronaviruse/risk-comms-updates/update-36-long-term-symptoms.pdf?sfvrsn=5d3789a6_2)
405 [comms-updates/update-36-long-term-symptoms.pdf?sfvrsn=5d3789a6_2](https://www.who.int/docs/default-source/coronaviruse/risk-comms-updates/update-36-long-term-symptoms.pdf?sfvrsn=5d3789a6_2).

- 406 3. Michelen M, Cheng V, Manoharan L, Elkheir N, Dagens D, Hastie C, et al. Characterising long term
407 Covid-19: a living systematic review. medRxiv. 2021:2020.12.08.20246025.
- 408 4. Government of Canada. Drug and vaccine authorizations for COVID-19: List of applications
409 received. Ottawa, Canada: Government of Canada; 2021. Available from:
410 [https://www.canada.ca/en/health-canada/services/drugs-health-products/covid19-](https://www.canada.ca/en/health-canada/services/drugs-health-products/covid19-industry/drugs-vaccines-treatments/authorization/applications.html)
411 [industry/drugs-vaccines-treatments/authorization/applications.html](https://www.canada.ca/en/health-canada/services/drugs-health-products/covid19-industry/drugs-vaccines-treatments/authorization/applications.html).
- 412 5. Health Canada. What you need to know about the COVID-19 vaccine for Canada 2020. Ottawa,
413 Canada: Health Canada; 2020. Available from: [https://www.canada.ca/en/public-](https://www.canada.ca/en/public-health/services/diseases/2019-novel-coronavirus-infection/awareness-resources/know-vaccine.html)
414 [health/services/diseases/2019-novel-coronavirus-infection/awareness-resources/know-](https://www.canada.ca/en/public-health/services/diseases/2019-novel-coronavirus-infection/awareness-resources/know-vaccine.html)
415 [vaccine.html](https://www.canada.ca/en/public-health/services/diseases/2019-novel-coronavirus-infection/awareness-resources/know-vaccine.html).
- 416 6. National Advisory Committee on Immunization. Preliminary guidance on key populations for early
417 COVID-19 immunization 2020. Ottawa, Canada; National Advisory Committee on Immunization;
418 2020. Available from: [https://www.canada.ca/en/public-health/services/immunization/national-](https://www.canada.ca/en/public-health/services/immunization/national-advisory-committee-on-immunization-naci/guidance-key-populations-early-covid-19-immunization.html)
419 [advisory-committee-on-immunization-naci/guidance-key-populations-early-covid-19-](https://www.canada.ca/en/public-health/services/immunization/national-advisory-committee-on-immunization-naci/guidance-key-populations-early-covid-19-immunization.html)
420 [immunization.html](https://www.canada.ca/en/public-health/services/immunization/national-advisory-committee-on-immunization-naci/guidance-key-populations-early-covid-19-immunization.html).
- 421 7. Ismail SJ, Zhao L, Tunis MC, Deeks SL, Quach C. Key populations for early COVID-19 immunization:
422 preliminary guidance for policy. CAMJ. 2020;192(48):E1620.
- 423 8. Ismail SJ, Hardy K, Tunis MC, Young K, Sicard N, Quach C. A framework for the systematic
424 consideration of ethics, equity, feasibility, and acceptability in vaccine program recommendations.
425 Vaccine. 2020;38(36):5861-76.
- 426 9. Ismail S, Tunis M, Zhao L, Quach C. Navigating inequities: a roadmap out of the pandemic. BMJ
427 2021;6:e004087.
- 428 10. Evans T, Brown H. Road traffic crashes: operationalizing equity in the context of health sector
429 reform. Inj Control Saf Promot. 2003;10(1-2):11-2.

- 430 11. Wingert A, Pillay J, Gates M, Guitard S, Rahman S, Beck A, et al. Risk factors for severity of COVID-
431 19: a rapid review to inform vaccine prioritization in Canada. *BMJ Open*. 2021;11(5):e044684.
- 432 12. National Advisory Committee on Immunization. Guidance on the prioritization of key populations
433 for COVID-19 immunization (February 12, 2021). Ottawa, Canada; National Advisory Committee
434 on Immunization; 2021. Available from: [https://www.canada.ca/en/public-](https://www.canada.ca/en/public-health/services/immunization/national-advisory-committee-on-immunization-naci/guidance-prioritization-key-populations-covid-19-vaccination.html)
435 [health/services/immunization/national-advisory-committee-on-immunization-naci/guidance-](https://www.canada.ca/en/public-health/services/immunization/national-advisory-committee-on-immunization-naci/guidance-prioritization-key-populations-covid-19-vaccination.html)
436 [prioritization-key-populations-covid-19-vaccination.html](https://www.canada.ca/en/public-health/services/immunization/national-advisory-committee-on-immunization-naci/guidance-prioritization-key-populations-covid-19-vaccination.html).
- 437 13. National Advisory Committee on Immunization. Recommendations on the use of COVID-19
438 vaccines (last updated July 22, 2021). Ottawa, Canada; National Advisory Committee on
439 Immunization; 2021. Available from: [https://www.canada.ca/content/dam/phac-](https://www.canada.ca/content/dam/phac-aspc/documents/services/immunization/national-advisory-committee-on-immunization-naci/recommendations-use-covid-19-vaccines/recommendations-use-covid-19-vaccines-en.pdf)
440 [aspc/documents/services/immunization/national-advisory-committee-on-immunization-](https://www.canada.ca/content/dam/phac-aspc/documents/services/immunization/national-advisory-committee-on-immunization-naci/recommendations-use-covid-19-vaccines/recommendations-use-covid-19-vaccines-en.pdf)
441 [naci/recommendations-use-covid-19-vaccines/recommendations-use-covid-19-vaccines-en.pdf](https://www.canada.ca/content/dam/phac-aspc/documents/services/immunization/national-advisory-committee-on-immunization-naci/recommendations-use-covid-19-vaccines/recommendations-use-covid-19-vaccines-en.pdf).
- 442 14. Higgins J, Thomas J, Chandler J, Cumpston M, Li T, Page M, et al. *Cochrane Handbook for*
443 *Systematic Reviews of Interventions*, 2nd Edition. Chichester, UK: John Wiley & Sons; 2019.
- 444 15. Page MJ, McKenzie JE, Bossuyt PM, Boutron I, Hoffmann TC, Mulrow CD, et al. The PRISMA 2020
445 statement: an updated guideline for reporting systematic reviews. *BMJ*. 2021;372:n71.
- 446 16. Centres for Disease Control and Prevention. People at increased risk and other people who need
447 to take extra precautions 2020; 2020. Available from: [https://www.cdc.gov/coronavirus/2019-](https://www.cdc.gov/coronavirus/2019-ncov/need-extra-precautions/index.html)
448 [ncov/need-extra-precautions/index.html](https://www.cdc.gov/coronavirus/2019-ncov/need-extra-precautions/index.html).
- 449 17. Government of the United Kingdom Department of Health and Social Care. Joint Committee on
450 Vaccination and Immunisation: advice on priority groups for COVID-19 vaccination 2021; 2021.
451 Available from: [https://www.gov.uk/government/publications/priority-groups-for-coronavirus-](https://www.gov.uk/government/publications/priority-groups-for-coronavirus-covid-19-vaccination-advice-from-the-jcvi-30-december-2020/joint-committee-on-vaccination-and-immunisation-advice-on-priority-groups-for-covid-19-vaccination-30-december-2020)
452 [covid-19-vaccination-advice-from-the-jcvi-30-december-2020/joint-committee-on-vaccination-](https://www.gov.uk/government/publications/priority-groups-for-coronavirus-covid-19-vaccination-advice-from-the-jcvi-30-december-2020/joint-committee-on-vaccination-and-immunisation-advice-on-priority-groups-for-covid-19-vaccination-30-december-2020)
453 [and-immunisation-advice-on-priority-groups-for-covid-19-vaccination-30-december-2020](https://www.gov.uk/government/publications/priority-groups-for-coronavirus-covid-19-vaccination-advice-from-the-jcvi-30-december-2020/joint-committee-on-vaccination-and-immunisation-advice-on-priority-groups-for-covid-19-vaccination-30-december-2020).

- 454 18. Australian Government Department of Health. Advice for people at risk of coronavirus (COVID-19)
455 2021; 2021. Available from: [https://www.health.gov.au/news/health-alerts/novel-coronavirus-](https://www.health.gov.au/news/health-alerts/novel-coronavirus-2019-ncov-health-alert/advice-for-people-at-risk-of-coronavirus-covid-19)
456 [2019-ncov-health-alert/advice-for-people-at-risk-of-coronavirus-covid-19](https://www.health.gov.au/news/health-alerts/novel-coronavirus-2019-ncov-health-alert/advice-for-people-at-risk-of-coronavirus-covid-19).
- 457 19. Centers for Disease Control and Prevention. Science Brief: Evidence used to update the list of
458 underlying medical conditions that increase a person's risk of severe illness from COVID-19 2021;
459 2021. Available from: [https://www.cdc.gov/coronavirus/2019-ncov/hcp/clinical-care/underlying-](https://www.cdc.gov/coronavirus/2019-ncov/hcp/clinical-care/underlying-evidence-table.html)
460 [evidence-table.html](https://www.cdc.gov/coronavirus/2019-ncov/hcp/clinical-care/underlying-evidence-table.html).
- 461 20. Murad MH, Mustafa RA, Schünemann HJ, Sultan S, Santesso N. Rating the certainty in evidence in
462 the absence of a single estimate of effect. *Evid Based Med*. 2017;22(3):85-7.
- 463 21. Iorio A, Spencer FA, Falavigna M, Alba C, Lang E, Burnand B, et al. Use of GRADE for assessment of
464 evidence about prognosis: rating confidence in estimates of event rates in broad categories of
465 patients. *BMJ*. 2015;350:h870.
- 466 22. Adrish M, Chilimuri S, Mantri N, Sun H, Zahid M, Gongati S, et al. Association of smoking status
467 with outcomes in hospitalised patients with COVID-19. *BMJ Open Resp Res*. 2020;7(1):e000716.
- 468 23. Ahlstrom B, Frithiof R, Hultstrom M, Larsson I-M, Strandberg G, Lipcsey M. The Swedish covid-19
469 intensive care cohort: Risk factors of ICU admission and ICU mortality. *Acta Anaesthesiol Scand*.
470 2021;65(4):525-33.
- 471 24. Alkhouli M, Nanjundappa A, Annie F, Bates MC, Bhatt DL. Sex differences in case fatality rate of
472 COVID-19: Insights from a multinational registry. *Mayo Clin Proc*. 2020;95(8):1613-20.
- 473 25. Altschul DJ, Unda SR, Benton J, de la Garza Ramos R, Cezayirli P, Mehler M, et al. A novel severity
474 score to predict inpatient mortality in COVID-19 patients. *Sci Rep*. 2020;10(1):16726.
- 475 26. Alvarez-Garcia J, Lee S, Gupta A, Cagliostro M, Joshi AA, Rivas-Lasarte M, et al. Prognostic impact
476 of prior heart failure in patients hospitalized with COVID-19. *J Am Coll Cardiol*. 2020;76(20):2334-
477 48.

- 478 27. An C, Lim H, Kim D-W, Chang JH, Choi YJ, Kim SW. Machine learning prediction for mortality of
479 patients diagnosed with COVID-19: a nationwide Korean cohort study. *Sci Rep.* 2020;10(1):18716.
- 480 28. Anantharaman A, Dusendang JR, Schmittiel JA, Harzstark AL. SARS-CoV-2 Clinical outcomes in
481 patients with cancer in a large integrated health care system in Northern California. *Oncol.*
482 2021;26(3):e500-e4.
- 483 29. Anderson MR, Geleris J, Anderson DR, Zucker J, Nobel YR, Freedberg D, et al. Body mass index and
484 risk for intubation or death in SARS-CoV-2 infection: a retrospective cohort study. *Ann Intern Med.*
485 2020;173(10):782-90.
- 486 30. Attaway AA, Zein J, Hatipoglu US. SARS-CoV-2 infection in the COPD population is associated with
487 increased healthcare utilization: An analysis of Cleveland clinic's COVID-19 registry.
488 *EClinicalMedicine.* 2020;26:100515.
- 489 31. Azar KMJ, Shen Z, Romanelli RJ, Lockhart SH, Smits K, Robinson S, et al. Disparities in outcomes
490 among COVID-19 patients in a large health care system in California. *Health Aff.* 2020;39(7):1253-
491 62.
- 492 32. Bailey LC, Razzaghi H, Burrows EK, Bunnell HT, Camacho PEF, Christakis DA, et al. Assessment of
493 135794 pediatric patients tested for severe acute respiratory syndrome coronavirus 2 across the
494 United States. *JAMA Pediatr.* 2021;175(2):176-84.
- 495 33. Barron E, Bakhai C, Kar P, Weaver A, Bradley D, Ismail H, et al. Associations of type 1 and type 2
496 diabetes with COVID-19-related mortality in England: A whole-population study. *Lancet Diabetes*
497 *Endocrinol.* 2020;8(10):813-22.
- 498 34. Bennett KE, Mullooly M, O'Loughlin M, Fitzgerald M, O'Donnell J, O'Connor L, et al. Underlying
499 conditions and risk of hospitalisation, ICU admission and mortality among those with COVID-19 in
500 Ireland: A national surveillance study. *Lancet.* 2021;5(100097).

- 501 35. Berenguer J, Ryan P, Rodriguez-Bano J, Jarrin I, Carratala J, Pachon J, et al. Characteristics and
502 predictors of death among 4035 consecutively hospitalized patients with COVID-19 in Spain. *Clin*
503 *Mircobiol Infect.* 2020;26(11):1525-36.
- 504 36. Bowe B, Cai M, Xie Y, Gibson AK, Maddukuri G, Al-Aly Z. Acute kidney injury in a national cohort of
505 hospitalized US veterans with COVID-19. *Clin J Am Soc Nephrol.* 2021;16(1):14-25.
- 506 37. Bravi F, Flacco ME, Carradori T, Volta CA, Cosenza G, De Togni A, et al. Predictors of severe or
507 lethal COVID-19, including Angiotensin Converting Enzyme inhibitors and Angiotensin II Receptor
508 Blockers, in a sample of infected Italian citizens. *PLoS One.* 2020;15(6):e0235248.
- 509 38. Carter B, Collins JT, Barlow-Pay F, Rickard F, Bruce E, Verduri A, et al. Nosocomial COVID-19
510 infection: examining the risk of mortality. The COPE-Nosocomial Study (COVID in Older PEople). *J*
511 *Hosp Infect.* 2020;106(2):376-84.
- 512 39. Chan L, Chaudhary K, Saha A, Chauhan K, Vaid A, Zhao S, et al. AKI in Hospitalized Patients with
513 COVID-19. *J Am Soc Nephrol.* 2020;106(2):376-384.
- 514 40. Chhiba KD, Patel GB, Vu THT, Chen MM, Guo A, Kudlaty E, et al. Prevalence and characterization of
515 asthma in hospitalized and nonhospitalized patients with COVID-19. *J Allergy Clin Immunol.*
516 2020;146(2):307-14.e4.
- 517 41. Clift AK, Coupland CAC, Keogh RH, Hemingway H, Hippisley-Cox J. COVID-19 mortality risk in Down
518 syndrome: Results from a cohort study Of 8 million adults. *Ann Intern Med.* 2020;M20-4986.
- 519 42. Cordtz R, Lindhardsen J, Soussi BG, Vela J, Uhrenholt L, Westermann R, et al. Incidence and
520 severeness of COVID-19 hospitalisation in patients with inflammatory rheumatic disease: a
521 nationwide cohort study from Denmark. *Rheumatol.* 2020; keaa897.
- 522 43. Cummings MJ, Baldwin MR, Abrams D, Jacobson SD, Meyer BJ, Balough EM, et al. Epidemiology,
523 clinical course, and outcomes of critically ill adults with COVID-19 in New York City: a prospective
524 cohort study. *Lancet.* 2020;395(10239):1763-70.

- 525 44. Czernichow S, Beeker N, Rives-Lange C, Guerot E, Diehl JL, Katsahian S, et al. Obesity doubles
526 mortality in patients hospitalized for SARS-CoV-2 in Paris hospitals, France: a cohort study on 5795
527 patients. *Obesity*. 2020;28(12):2282-9.
- 528 45. D'Silva KM, Jorge A, Cohen A, McCormick N, Zhang Y, Wallace ZS, et al. COVID-19 outcomes in
529 patients with Systemic Autoimmune Rheumatic Diseases (SARDs) compared to the general
530 population: A US multi-center comparative cohort study. *Arthritis Rheumatol*. 2021;73(6):914-20.
- 531 46. de Azambuja E, Brandao M, Wildiers H, Laenen A, Aspeslagh S, Fontaine C, et al. Impact of solid
532 cancer on in-hospital mortality overall and among different subgroups of patients with COVID-19:
533 a nationwide, population-based analysis. *ESMO Open*. 2020;5(5):e000947.
- 534 47. Dennis JM, Mateen BA, Sonabend R, Thomas NJ, Patel KA, Hattersley AT, et al. Type 2 diabetes and
535 COVID-19-related mortality in the critical care setting: a national cohort study in England, March-
536 July 2020. *Diabetes care*. 2021;44(1):50-7.47.
- 537 48. Denova-Gutiérrez E, Lopez-Gatell H, Alomia-Zegarra JL, López-Ridaura R, Zaragoza-Jimenez CA,
538 Dyer-Leal DD, et al. The association between obesity, type 2 diabetes, and hypertension with
539 severe COVID-19 on admission among Mexicans. *Obesity*. 2020;28(10):1826-32.
- 540 49. Docherty AB, Harrison EM, Green CA, Hardwick HE, Pius R, Norman L, et al. Features of 20 133 UK
541 patients in hospital with COVID-19 using the ISARIC WHO Clinical Characterisation Protocol:
542 prospective observational cohort study. *BMJ*. 2020;369:m1985.
- 543 50. Ellington S, Strid P, Tong VT, Woodworth K, Galang R, Zambrano LD, et al. Characteristics of
544 women of reproductive age with laboratory-confirmed SARS-CoV-2 infection by pregnancy status
545 — United States, January 22–June 7, 2020. *Obstet Gynecol Surv*. 2020;75(11):664-6
- 546 51. Esme M, Koca M, Dikmeer A, Balci C, Ata N, Dogu BB, et al. Older adults with coronavirus disease
547 2019; a nationwide study in Turkey. *J Gerontol*. 2021. 76(3):e68-75.

- 548 52. Floyd GC, Dudley JW, Xiao R, Feudtner C, Taquechel K, Miller K, et al. Prevalence of asthma in
549 hospitalized and non-hospitalized children with COVID-19. *J Allergy Clin Immunol Pract*.
550 2021;9(5):2077-9.e2.
- 551 53. Fond G, Pauly V, Leone M, Llorca P-M, Orleans V, Loundou A, et al. Disparities in intensive care
552 unit admission and mortality among patients with schizophrenia and COVID-19: a national cohort
553 study. *Schizophr Bull*. 2020;sba158.
- 554 54. Fresan U, Guevara M, Elia F, Albeniz E, Burgui C, Castilla J, et al. Independent role of morbid
555 obesity as a risk factor for COVID-19 hospitalization: a Spanish population-based cohort study.
556 *Obesity*. 2021;29(1):29-37.54.
- 557 55. Garazzino S, Lo Vecchio A, Pierantoni L, Calo Carducci FI, Marchetti F, Meini A, et al. Epidemiology,
558 clinical features and prognostic factors of pediatric SARS-CoV-2 infection: Results from an Italian
559 multicenter Study. *Front Pediatr*. 2021;9:649358.
- 560 56. Geretti AM, Stockdale AJ, Kelly SH, Cevik M, Collins S, Waters L, et al. Outcomes of COVID-19
561 related hospitalization among people with HIV in the ISARIC WHO Clinical Characterization
562 Protocol (UK): a prospective observational study. *Clin Infect Dis*. 2020;ciaa1605.
- 563 57. Giorgi Rossi P, Marino M, Formisano D, Venturelli F, Vicentini M, Grilli R, et al. Characteristics and
564 outcomes of a cohort of COVID-19 patients in the Province of Reggio Emilia, Italy. *PLoS One*.
565 2020;15(8):e0238281.
- 566 58. Gottlieb M, Sansom S, Frankenberger C, Ward E, Hota B. Clinical course and factors associated
567 with hospitalization and critical illness among COVID-19 patients in Chicago, Illinois. *Acad Emerg
568 Med*. 2020;27(10):963-73.
- 569 59. Göttinger F, Santiago-Garcia B, Noguera-Julian A, Lanasa M, Lancella L, Calo Carducci FI, et al.
570 COVID-19 in children and adolescents in Europe: a multinational, multicentre cohort study. *Lancet
571 Child Adolesc Health*. 2020;4(9):653-61.

- 572 60. Grasselli G, Greco M, Zanella A, Albano G, Antonelli M, Bellani G, et al. Risk factors associated with
573 mortality among patients with COVID-19 in intensive care units in Lombardy, Italy. *JAMA Intern*
574 *Med.* 2020;180(10):1345-55.
- 575 61. Guerrero-Torres L, Caro-Vega Y, Crabtree-Ramirez B, Sierra-Madero JG. Clinical characteristics and
576 mortality of healthcare workers with SARS-CoV-2 infection in Mexico City. *Clin Infect Dis.*
577 2020;ciaa1465.
- 578 62. Gupta S, Hayek SS, Wang W, Chan L, Mathews KS, Melamed ML, et al. Factors associated with
579 death in critically ill patients with coronavirus disease 2019 in the US. *JAMA Intern Med.*
580 2020;180(11):1436-46.
- 581 63. Gupta S, Coca SG, Chan L, Melamed ML, Brenner SK, Hayek SS, et al. AKI treated with renal
582 replacement therapy in critically ill patients with COVID-19. *J Am Soc Nephrol.* 2020;32(1):161-76.
- 583 64. Hajifathalian K, Krisko T, Mehta A, Kumar S, Schwartz R, Fortune B, et al. Gastrointestinal and
584 hepatic manifestations of 2019 novel coronavirus disease in a large cohort of infected patients
585 from New York: clinical implications. *Gastroentero.* 2020;159(3):1137-1140.e2.
- 586 65. Hamer M, Gale CR, Kivimaki M, Batty GD. Overweight, obesity, and risk of hospitalization for
587 COVID-19: A community-based cohort study of adults in the United Kingdom. *Proc Natl Acad Sci*
588 *USA.* 2020;117(35):21011-3.
- 589 66. Hamer M, Kivimaki M, Gale CR, David Batty G. Lifestyle risk factors, inflammatory mechanisms,
590 and COVID-19 hospitalization: A community-based cohort study of 387,109 adults in UK. *Brain*
591 *Behv Immun.* 2020;87:184-7.
- 592 67. Harrison SL, Fazio-Eynullayeva E, Lane DA, Underhill P, Lip GYH. Comorbidities associated with
593 mortality in 31,461 adults with COVID-19 in the United States: A federated electronic medical
594 record analysis. *PLoS Med.* 2020;17(9):e1003321.

- 595 68. Hernández-Vásquez A, Azañedo D, Vargas-Fernández R, Bendezu-Quispe G. Association of
596 comorbidities with pneumonia and death among COVID-19 patients in Mexico: a nationwide
597 cross-sectional study. *J Prev Med Public Health*. 2020;53(4):211-9.
- 598 69. Hirsch JS, Ng JH, Ross DW, Sharma P, Shah HH, Barnett RL, et al. Acute kidney injury in patients
599 hospitalized with COVID-19. *Kidney Int*. 2020;98(1):209-18.
- 600 70. Huh K, Lee R, Ji W, Kang M, Hwang IC, Lee DH, et al. Impact of obesity, fasting plasma glucose
601 level, blood pressure, and renal function on the severity of COVID-19: A matter of sexual
602 dimorphism? *Diabetes Res Clin Pract*. 2020;170:108515.
- 603 71. Iaccarino G, Grassi G, Borghi C, Ferri C, Salvetti M, Volpe M, et al. Age and multimorbidity predict
604 death among COVID-19 patients: results of the SARS-RAS study of the Italian Society of
605 Hypertension. *Hypertension*. 2020;76(2):366-72.
- 606 72. Ioannou GN, Locke E, Green P, Berry K, O'Hare AM, Shah JA, et al. Risk factors for hospitalization,
607 mechanical ventilation, or death among 10131 US veterans With SARS-CoV-2 infection. *JAMA*
608 *Netw Open*. 2020;3(9):e2022310.
- 609 73. Izurieta HS, Graham DJ, Jiao Y, Hu M, Lu Y, Wu Y, et al. natural history of coronavirus disease 2019:
610 risk factors for hospitalizations and deaths among >26 Million US Medicare Beneficiaries. *J Infect*
611 *Dis*. 2021;223(6):945-56.
- 612 74. Izzy S, Tahir Z, Cote DJ, Al Jarrah A, Roberts MB, Turbett S, et al. Characteristics and outcomes of
613 Latinx patients with COVID-19 in comparison with other ethnic and racial groups. *Open Forum*
614 *Infect Dis*. 2020;7(10):ofaa401.
- 615 75. Jakob CEM, Borgmann S, Duygu F, Behrends U, Hower M, Merle U, et al. First results of the "Lean
616 European Open Survey on SARS-CoV-2-Infected Patients (LEOSS)". *Infection*. 2021;49(1):63-73.

- 617 76. Ji W, Huh K, Kang M, Hong J, Bae GH, Lee R, et al. Effect of underlying comorbidities on the
618 infection and severity of COVID-19 in Korea: a nationwide case-control study. *J Korean Med Sci.*
619 2020;35(25):e237.
- 620 77. Jiménez E, Fontán-Vela M, Valencia J, Fernandez-Jimenez I, Álvaro-Alonso EA, Izquierdo-García E,
621 et al. Characteristics, complications and outcomes among 1549 patients hospitalised with COVID-
622 19 in a secondary hospital in Madrid, Spain: a retrospective case series study. *BMJ Open.*
623 2020;10(11):e042398.
- 624 78. Kabarriti R, Brodin NP, Maron MI, Guha C, Kalnicki S, Garg MK, et al. Association of race and
625 ethnicity with comorbidities and survival among patients with COVID-19 at an urban medical
626 center in New York. *JAMA Netw Open.* 2020;3(9):e2019795.
- 627 79. Kaeuffer C, Le Hyaric C, Fabacher T, Mootien J, Dervieux B, Ruch Y, et al. Clinical characteristics
628 and risk factors associated with severe COVID-19: prospective analysis of 1,045 hospitalised cases
629 in North-Eastern France, March 2020. *Euro Surveill.* 2020;25(48):2000895.
- 630 80. Kim L, Garg S, O'Halloran A, Whitaker M, Pham H, Anderson EJ, et al. Risk Factors for intensive
631 care unit admission and in-hospital mortality among hospitalized adults identified through the U.S.
632 Coronavirus Disease 2019 (COVID-19)-Associated Hospitalization Surveillance Network (COVID-
633 NET). *Clin Infect Dis.* 2020;ciaa1012.
- 634 81. Kim T, Roslin M, Wang JJ, Kane J, Hirsch JS, Ji Kim E, et al. Body mass index as a risk factor for
635 clinical outcomes in patients hospitalized with COVID-19 in New York. *Obesity.* 2020;29(2):279-
636 284.
- 637 82. King JT Jr., Yoon JS, Rentsch CT, Tate JP, Park LS, Kidwai-Khan F, et al. Development and validation
638 of a 30-day mortality index based on pre-existing medical administrative data from 13,323 COVID-
639 19 patients: The Veterans Health Administration COVID-19 (VACO) Index. *PLoS One.*
640 2020;15(11):e0241825.

- 641 83. Kjeldsen J, Nielsen J, Ellingsen T, Knudsen T, Nielsen RG, Larsen MD, et al. Outcome of COVID-19 in
642 hospitalized patients with chronic inflammatory diseases. A population based national register
643 study in Denmark. *J Autoimmun.* 2021;120:102632.
- 644 84. Klang E, Kassim G, Soffer S, Freeman R, Levin MA, Reich DL. Morbid obesity as an independent risk
645 factor for covid-19 mortality in hospitalized patients younger than 50. *Obesity.* 2020;28(9):1595-9.
- 646 85. Ko JY, Danielson ML, Town M, Derado G, Greenlund KJ, Daily Kirley P, et al. Risk factors for COVID-
647 19-associated hospitalization: COVID-19-associated hospitalization surveillance network and
648 behavioral risk factor surveillance system. *Clin Infect Dis.* 2020;ciaa1419.
- 649 86. Kolhe NV, Fluck RJ, Selby NM, Taal MW. Acute kidney injury associated with COVID-19: A
650 retrospective cohort study. *PLoS Med.* 2020;17(10):e1003406.
- 651 87. Kragholm K, Andersen MP, Gerds TA, Butt JH, Ostergaard L, Polcwiartek C, et al. Association
652 between male sex and outcomes of Coronavirus Disease 2019 (Covid-19) - a Danish nationwide,
653 register-based study. *Clin Infect Dis.* 2020;ciaa924.
- 654 88. Kummer BR, Klang E, Stein LK, Dhamoon MS, Jette N. History of stroke is independently associated
655 with in-hospital death in patients with COVID-19. *Stroke.* 2020;51(10):3112-4.
- 656 89. Kundi H, Cetin EHO, Canpolat U, Aras S, Celik O, Ata N, et al. The role of frailty on adverse
657 outcomes among older patients with COVID-19. *J Infect.* 2020;81(6):944-51.
- 658 90. Lassale C, Gaye B, Hamer M, Gale CR, Batty GD. Ethnic disparities in hospitalisation for COVID-19
659 in England: The role of socioeconomic factors, mental health, and inflammatory and pro-
660 inflammatory factors in a community-based cohort study. *Brain Behav Immun.* 2020;88:44-9.
- 661 91. Lee S-G, Park GU, Moon YR, Sung K. Clinical characteristics and risk factors for fatality and severity
662 in patients with coronavirus disease in korea: a nationwide population-based retrospective study
663 using the Korean Health Insurance Review and Assessment Service (HIRA) Database. *Int J Environ*
664 *Res Public Health.* 2020;17(22):8559.

- 665 92. Lee SH, Park S-Y, Seon J-Y, Jeon W-H, Nam S-I, Park J-H, et al. Intensive care unit capacity and its
666 associated risk factors during the COVID-19 surge in the Republic of Korea: analysis using
667 nationwide health claims data. *Risk Manag Healthc Policy*. 2020;13:2571-81.
- 668 93. Lee SW, Yang JM, Moon SY, Yoo IK, Ha EK, Kim SY, et al. Association between mental illness and
669 COVID-19 susceptibility and clinical outcomes in South Korea: a nationwide cohort study. *Lancet*
670 *Psych*. 2020;7(12):1025-31.
- 671 94. Leon-Abarca JA. Obesity and immunodeficiencies are the main pre-existing conditions associated
672 with mild to moderate COVID-19 in children. *Pediatr Obes*. 2020;15(12):e12713.
- 673 95. Loffi M, Piccolo R, Regazzoni V, Di Tano G, Moschini L, Robba D, et al. Coronary artery disease in
674 patients hospitalised with Coronavirus disease 2019 (COVID-19) infection. *Open Heart*. 2020;7(2).
- 675 96. Ludvigsson JF, Axelrad J, Halfvarson J, Khalili H, Larsson E, Lochhead P, et al. Inflammatory bowel
676 disease and risk of severe COVID-19: A nationwide population-based cohort study in Sweden.
677 *United European Gastroenterol J*. 2021;9(2):177-92.
- 678 97. Lunski MJ, Burton J, Tawagi K, Maslov D, Simenson V, Barr D, et al. Multivariate mortality analyses
679 in COVID-19: comparing patients with cancer and patients without cancer in Louisiana. *Cancer*.
680 2021;127(2):266-74.
- 681 98. Mallow PJ, Belk KW, Topmiller M, Hooker EA. Outcomes of hospitalized COVID-19 patients by risk
682 factors: results from a United States hospital claims database. *J Health Econ Outcomes Res*.
683 2020;7(2):165-74.
- 684 99. Mancilla-Galindo J, Vera-Zertuche JM, Navarro-Cruz AR, Segura-Badilla O, Reyes-Velazquez G,
685 Tepepa-Lopez FJ, et al. Development and validation of the patient history COVID-19 (PH-Covid19)
686 scoring system: a multivariable prediction model of death in Mexican patients with COVID-19.
687 *Epidemiol Infect*. 2020;148:e286.

- 688 100. Martinez-Portilla RJ, Smith ER, He S, Torres-Torres J, Espino-Y-Sosa S, Solis-Paredes JM, et al.
689 Young pregnant women are also at an increased risk of mortality and severe illness due to
690 coronavirus disease 2019: analysis of the Mexican National Surveillance Program. *Am J Obstet*
691 *Gynecol.* 2021;224(4):404-7.
- 692 101. Martinez-Portilla RJ, Sotiriadis A, Chatzakis C, Torres-Torres J, Espino Y Sosa S, Sandoval-
693 Mandujano K, et al. Pregnant women with SARS-CoV-2 infection are at higher risk of death and
694 pneumonia: propensity score matched analysis of a nationwide prospective cohort (COV19Mx).
695 *Ultrasound Obstet Gynecol.* 2021;57(2):224-31.
- 696 102. Mikami T, Miyashita H, Yamada T, Harrington M, Steinberg D, Dunn A, et al. Risk factors for
697 mortality in patients with COVID-19 in New York City. *J Gen Intern Med.* 2020;36:17-26.
- 698 103. Miller J, Fadel RA, Tang A, Perrotta G, Herc E, Soman S, et al. The impact of sociodemographic
699 factors, comorbidities and physiologic response on 30-day mortality in COVID-19 patients in
700 Metropolitan Detroit. *Clin Infect Dis.* 2020;ciaa1420.
- 701 104. Misra-Hebert AD, Jehi L, Ji X, Nowacki AS, Gordon S, Terpeluk P, et al. Impact of the COVID-19
702 pandemic on healthcare workers' risk of infection and outcomes in a large, integrated health
703 system. *J Gen Intern Med.* 2020;35(11):3293-301.
- 704 105. Molnar MZ, Bhalla A, Azhar A, Tsujita M, Talwar M, Balaraman V, et al. Outcomes of critically ill
705 solid organ transplant patients with COVID-19 in the United States. *Am J Transplant.*
706 2020;20(11):3061-71.
- 707 106. Moreira A, Chorath K, Rajasekaran K, Burmeister F, Ahmed M, Moreira A. Demographic predictors
708 of hospitalization and mortality in US children with COVID-19. *Eur J Pediatr.* 2021;180(5):1659-63.
- 709 107. Murillo-Zamora E, Hernandez-Suarez CM. Survival in adult inpatients with COVID-19. *Public*
710 *Health.* 2021;190:1-3.

- 711 108. Nachtigall I, Lenga P, Jozwiak K, Thurmann P, Meier-Hellmann A, Kuhlen R, et al. Clinical course
712 and factors associated with outcomes among 1904 patients hospitalized with COVID-19 in
713 Germany: an observational study. *Clin Microbiol Infect.* 2020;26(12):1663-9.
- 714 109. Nair V, Jandovitz N, Hirsch JS, Abate M, Satapathy SK, Roth N, et al. An early experience on the
715 effect of solid organ transplant status on hospitalized COVID-19 patients. *Am J Transplant.*
716 2020;21(7):2522-31.
- 717 110. Ng JH, Hirsch JS, Wanchoo R, Sachdeva M, Sakhiya V, Hong S, et al. Outcomes of patients with
718 end-stage kidney disease hospitalized with COVID-19. *Kidney Int.* 2020;98(6):1530-9.
- 719 111. Nijman G, Wientjes M, Ramjith J, Janssen N, Hoogerwerf J, Abbink E, et al. Risk factors for in-
720 hospital mortality in laboratory-confirmed COVID-19 patients in the Netherlands: A competing risk
721 survival analysis. *PLoS One.* 2021;16(3):e0249231.
- 722 112. Parra-Bracamonte GM, Lopez-Villalobos N, Parra-Bracamonte FE. Clinical characteristics and risk
723 factors for mortality of patients with COVID-19 in a large data set from Mexico. *Ann Epidemiol.*
724 2020;52:93-8.e2.
- 725 113. Parra-Bracamonte GM, Parra-Bracamonte FE, Lopez-Villalobos N, Lara-Rivera AL. Chronic kidney
726 disease is a very significant comorbidity for high risk of death in patients with COVID-19 in Mexico.
727 *Nephrol.* 2020. 26(3):248-51.
- 728 114. Patel AP, Paranjpe MD, Kathiresan NP, Rivas MA, Khera AV. Race, socioeconomic deprivation, and
729 hospitalization for COVID-19 in English participants of a national biobank. *Int J Equity Health.*
730 2020;19(1):114.
- 731 115. Petermann-Rocha F, Hanlon P, Gray SR, Welsh P, Gill JMR, Foster H, et al. Comparison of two
732 different frailty measurements and risk of hospitalisation or death from COVID-19: findings from
733 UK Biobank. *BMC Med.* 2020;18(1):355.

- 734 116. Petrilli CM, Jones SA, Yang J, Rajagopalan H, O'Donnell L, Chernyak Y, et al. Factors associated with
735 hospital admission and critical illness among 5279 people with coronavirus disease 2019 in New
736 York City: prospective cohort study. *BMJ*. 2020;369:m1966.
- 737 117. Pinto C, Berselli A, Mangone L, Damato A, Iachetta F, Foracchia M, et al. SARS-CoV-2 positive
738 hospitalized cancer patients during the Italian outbreak: the cohort study in Reggio Emilia. *Biology*.
739 2020;9(8):181.
- 740 118. Poletti P, Tirani M, Cereda D, Trentini F, Guzzetta G, Marziano V, et al. Age-specific SARS-CoV-2
741 infection fatality ratio and associated risk factors, Italy, February to April 2020. *Euro Surveill*.
742 2020;25(31):2001383.
- 743 119. Polverino F, Stern DA, Ruocco G, Balestro E, Bassetti M, Candelli M, et al. Comorbidities,
744 cardiovascular therapies, and COVID-19 mortality: a nationwide, Italian observational study
745 (ItaliCO). *Front Cardiovasc Med*. 2020;7:585866.
- 746 120. Portolés J, Marques M, López-Sánchez P, de Valdenebro M, Muñoz E, Serrano ML, et al. Chronic
747 kidney disease and acute kidney injury in the COVID-19 Spanish outbreak. *Nephrol Dial Transplant*.
748 2020;35(8):1353-61.
- 749 121. Poulson M, Geary A, Annesi C, Allee L, Kenzik K, Sanchez S, et al. National disparities in COVID-19
750 outcomes between Black and White Americans. *J Natl Med Assoc*. 2020; in press.
- 751 122. Prado-Galbarro FJ, Sanchez-Piedra C, Gamino-Arroyo AE, Cruz-Cruz C. Determinants of survival
752 after severe acute respiratory syndrome coronavirus 2 infection in Mexican outpatients and
753 hospitalised patients. *Pub Health*. 2020;189:66-72.
- 754 123. Preston LE, Chevinsky JR, Kompaniyets L, Lavery AM, Kimball A, Boehmer TK, et al. Characteristics
755 and Disease Severity of US Children and Adolescents Diagnosed With COVID-19. *JAMA Netw Open*.
756 2021;4(4):e215298.

- 757 124. Price-Haywood EG, Burton J, Fort D, Seoane L. Hospitalization and mortality among black patients
758 and white patients with Covid-19. *N Engl J Med*. 2020;382:2534-43.
- 759 125. Rapp J, Lieberman-Cribbin W, Tuminello S, Taioli E. Male sex, severe obesity, older age, and
760 chronic kidney disease are associated with COVID-19 severity and mortality in New York City.
761 *Chest*. 2020;159(1):112-5.
- 762 126. Reilev M, Kristensen KB, Pottegard A, Lund LC, Hallas J, Ernst MT, et al. Characteristics and
763 predictors of hospitalization and death in the first 11 122 cases with a positive RT-PCR test for
764 SARS-CoV-2 in Denmark: a nationwide cohort. *Int J Epidemiol*. 2020;49(5):1468-81.
- 765 127. Rentsch CT, Kidwai-Khan F, Tate JP, Park LS, King JT, Jr., Skanderson M, et al. Patterns of COVID-19
766 testing and mortality by race and ethnicity among United States veterans: A nationwide cohort
767 study. *PLoS Med*. 2020;17(9):e1003379.
- 768 128. Rey JR, Caro-Codón J, Rosillo SO, Iniesta AM, Castrejon-Castrejón S, Marco-Clement I, et al. Heart
769 failure in COVID-19 patients: prevalence, incidence and prognostic implications. *Eur J Heart Fail*.
770 2020:101002/ejhf.1990.
- 771 129. Ríos-Silva M, Murillo-Zamora E, Mendoza-Cano O, Trujillo X, Huerta M. COVID-19 mortality among
772 pregnant women in Mexico: A retrospective cohort study. *J Glob Health*. 2020;10(2):020512.
- 773 130. Rodilla E, Saura A, Jiménez I, Mendizábal A, Pineda-Cantero A, Lorenzo-Hernández E, et al.
774 Association of Hypertension with all-cause mortality among hospitalized patients with COVID-19. *J*
775 *Clin Med*. 2020;9(10):3136.
- 776 131. Samuels S, Niu J, Sareli C, Eckardt P. The epidemiology and predictors of outcomes among
777 confirmed COVID-19 cases in a large community healthcare system in south Florida. *J Community*
778 *Health*. 2021;46(4):822-31.

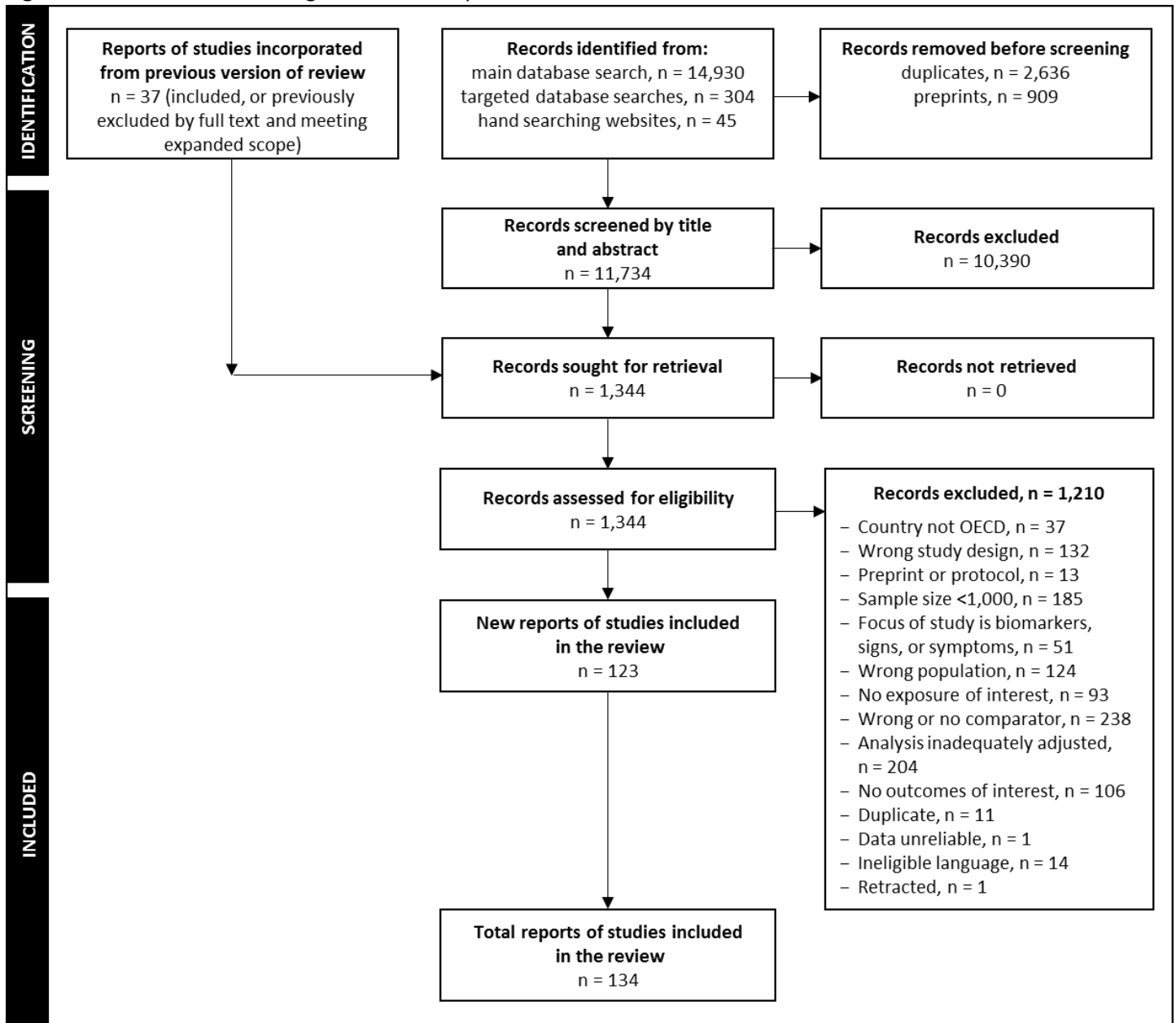
- 779 132. Sapey E, Gallier S, Mainey C, Nightingale P, McNulty D, Crothers H, et al. Ethnicity and risk of death
780 in patients hospitalised for COVID-19 infection in the UK: an observational cohort study in an
781 urban catchment area. *BMJ Open Res*. 2020;7(1):e000644.
- 782 133. Shah ASV, Wood R, Gribben C, Caldwell D, Bishop J, Weir A, et al. Risk of hospital admission with
783 coronavirus disease 2019 in healthcare workers and their households: nationwide linkage cohort
784 study. *BMJ*. 2020;371:m3582.
- 785 134. Shah V, Ko Ko T, Zuckerman M, Vidler J, Sharif S, Mehra V, et al. Poor outcome and prolonged
786 persistence of SARS-CoV-2 RNA in COVID-19 patients with haematological malignancies; King's
787 College Hospital experience. *Br J Haematol*. 2020;190(5):279-82.
- 788 135. Tartof SY, Qian L, Hong V, Wei R, Nadjafi RF, Fischer H, et al. Obesity and mortality among patients
789 diagnosed with COVID-19: results from an integrated health care organization. *Ann Intern Med*.
790 2020;173(10):773-81.
- 791 136. Ungaro RC, Agrawal M, Park S, Hirten R, Colombel J-F, Twyman K, et al. Autoimmune and chronic
792 inflammatory disease patients with COVID-19. *ACR Open Rheumatol*. 2021;3(2):111-5.
- 793 137. Valenzuela RG, Michelen Y, Bracey A, Cruz P, Fombonne B, Fries BC, et al. Outcomes in Hispanics
794 With COVID-19 are similar to those of Caucasian patients in suburban New York. *Acad Emerg Med*.
795 2020;27(12):1260-9.
- 796 138. van Gerwen M, Alsen M, Little C, Barlow J, Genden E, Naymagon L, et al. Risk factors and
797 outcomes of COVID-19 in New York City; a retrospective cohort study. *J Med Virol*.
798 2020;93(2):917-15.
- 799 139. van Gerwen M, Alsen M, Little C, Barlow J, Naymagon L, Tremblay D, et al. Outcomes of patients
800 with hypothyroidism and COVID-19: a retrospective cohort study. *Front Endocrinol*. 2020;11:565.

- 801 140. Wang Z, Zheutlin A, Kao Y-H, Ayers K, Gross S, Kovatch P, et al. Hospitalised COVID-19 patients of
802 the Mount Sinai Health System: a retrospective observational study using the electronic medical
803 records. *BMJ Open*. 2020;10(10):e040441.
- 804 141. Yehia BR, Winegar A, Fogel R, Fakhri M, Ottenbacher A, Jessor C, et al. Association of race with
805 mortality among patients hospitalized with Coronavirus Disease 2019 (COVID-19) at 92 US
806 hospitals. *JAMA Netw Open*. 2020;3(8):e2018039.
- 807 142. Zafari M, Rad MTS, Mohseni F, Nikbakht N. β -Thalassemia Major and coronavirus-19, mortality
808 and morbidity: a systematic review study. *Hemoglobin*. 2021;45(1):1-4.
- 809 143. Zambrano LD, Ellington S, Strid P, Galang RR, Oduyebo T, Tong VT, et al. Update: characteristics of
810 symptomatic women of reproductive age with laboratory-confirmed SARS-CoV-2 infection by
811 pregnancy status - United States, January 22-October 3, 2020. *MMWR Morb Mortal Wkly Rep*.
812 2020;69(44):1641-7.
- 813 144. Zhu Z, Hasegawa K, Ma B, Fujiogi M, Camargo CA, Liang L. Association of obesity and its genetic
814 predisposition with the risk of severe COVID-19: analysis of population-based cohort data.
815 *Metabolism*. 2020;112:154345.
- 816 145. Fisman DN, Bogoch I, Lapointe-Shaw L, McCready J, Tuite AR. Risk factors associated with
817 mortality among residents with Coronavirus Disease 2019 (COVID-19) in long-term care facilities in
818 Ontario, Canada. *JAMA Netw Open*. 2020;3(7):e2015957.
- 819 146. Fisman DN, Greer AL, Hillmer M, Tuite R. Derivation and validation of clinical prediction rules for
820 COVID-19 mortality in Ontario, Canada. *Open Forum Infect Dis*. 2020;7(11):ofaa463.
- 821 147. Indigenous Services Canada. Confirmed cases of COVID-19. Ottawa ON: Indigenous Services
822 Canada; 2021. Available from: <https://www.sac-isc.gc.ca/eng/1598625105013/1598625167707>.
- 823 148. Liu M, Maxwell CJ, Armstrong P, Schwandt M, Moser A, McGregor MJ, et al. COVID-19 in long-
824 term care homes in Ontario and British Columbia. *CMAJ*. 2020;192(47):E1540-E6.

- 825 149. Money D. Canadian surveillance of covid-19 in pregnancy: Epidemiology, maternal and infant
826 outcomes. Vancouver, Canada: University of British Columbia; 2021. Available from:
827 <https://ridprogram.med.ubc.ca/cancovid-preg/>
- 828 150. O'Brien J, Du KY, Peng C. Incidence, clinical features, and outcomes of COVID-19 in Canada: impact
829 of sex and age. *J Ovarian Res.* 2020;13(1):137.
- 830 151. O'Brien K, St-Jean M, Wood P, Willbond S, Phillips O, Currie D, et al. COVID-19 death comorbidities
831 in Canada. Ottawa, Canada: Statistics Canada; 2020. Available from:
832 [https://www150.statcan.gc.ca/n1/en/pub/45-28-0001/2020001/article/00087-](https://www150.statcan.gc.ca/n1/en/pub/45-28-0001/2020001/article/00087-eng.pdf?st=Tj531x2z)
833 [eng.pdf?st=Tj531x2z](https://www150.statcan.gc.ca/n1/en/pub/45-28-0001/2020001/article/00087-eng.pdf?st=Tj531x2z)
- 834 152. Panetta L, Proulx C, Drouin O, Autmizguine J, Luu TM, Quach C, et al. Clinical Characteristics and
835 Disease Severity Among Infants With SARS-CoV-2 Infection in Montreal, Quebec, Canada. *JAMA*
836 *Netw Open.* 2020;3(12):e2030470.
- 837 153. Public Health Agency of Canada COVID-19 Surveillance and Epidemiology Team. Descriptive
838 epidemiology of deceased cases of COVID-19 reported during the initial wave of the epidemic in
839 Canada, January 15 to July 9, 2020. *Canada Communicable Disease Report (CCDR).*
840 2020;46(10):344-8.
- 841 154. Subedi R, Greenberg G, Turcotte M. COVID-19 mortality rates in Canada's ethno-cultural
842 neighbourhoods. Ottawa, Canada: Statistics Canada; 2020. Available from:
843 <https://www150.statcan.gc.ca/n1/pub/45-28-0001/2020001/article/00079-eng.htm>
- 844 155. Wang L, Ma H, Yiu KCY, Calzavara A, Landsman D, Luong L, et al. Heterogeneity in testing,
845 diagnosis and outcome in SARS-CoV-2 infection across outbreak settings in the Greater Toronto
846 Area, Canada: an observational study. *CMAJ Open.* 2020;8(4):E627-E36.
- 847 156. McAlister FA, Bushnik T, Leung AA, Saxinger L. Informing COVID-19 vaccination priorities based on
848 the prevalence of risk factors among adults in Canada. *CMAJ.* 2021;193(17):E617-21.

- 849 157. Jordan RE, Adab P, Cheng KK. COVID-19: risk factors for severe disease and death. *BMJ*.
850 2020;368:m1198.
- 851 158. Arlet J-B, de Luna G, Khimoud D, Odièvre M-H, de Montalembert M, Joseph L, et al. Prognosis of
852 patients with sickle cell disease and COVID-19: a French experience. *Lancet Haematol*.
853 2020;7(9):e632-e4.
- 854 159. de Sanctis V, Canatan D, Corrons JLV, Karimi M, Daar S, Kattamis C, et al. Preliminary data on
855 COVID-19 in patients with hemoglobinopathies: A multicentre ICET-A study. *Mediterr J Hematol*
856 *Infect Dis*. 2020;12(1):e2020046-e.
- 857 160. Lenti MV, Aronico N, Pellegrino I, Boveri E, Giuffrida P, Borrelli de Andreis F, et al. Depletion of
858 circulating IgM memory B cells predicts unfavourable outcome in COVID-19. *Sci Rep*.
859 2020;10(1):20836.
- 860 161. McClenaghan E, Cosgriff R, Brownlee K, Ahern S, Burgel P-R, Byrnes CA, et al. The global impact of
861 SARS-CoV-2 in 181 people with cystic fibrosis. *J Cyst Fibros*. 2020;19(6):868-71.

Figure 1. Flow of records through the selection process



OECD=Organization for Economic Cooperation and Development

Table 1. Eligibility criteria for inclusion of studies in the review ^a

	Inclusion and exclusion criteria
Study design	<p>Include:</p> <ul style="list-style-type: none"> – Prospective and retrospective cohort studies, including registry-based studies (may be published as a letter); government reports; pre-prints that have been accepted for publication – Canadian reports of any design – Systematic reviews, only for risk factors of high relevance to NACI where no primary studies are found <p>Exclude: Pre-prints that have not been accepted by a peer-reviewed journal, commentaries, editorials</p>
Sample size	<p>Primary studies were required to include at least 1,000 participants (≥300 for studies of children). There was no sample size requirement for systematic reviews.</p>
Population	<p>Include: People of any age in the general population; with COVID-19 infection (laboratory-confirmed or epidemiologically linked); hospitalized with COVID-19; with severe COVID-19 (as defined by study authors); children in any of the aforementioned populations.</p> <p>Exclude: Populations with other pandemic-related infections, if data for COVID-19 cannot be isolated. People with COVID-19 that is not laboratory-confirmed or epidemiologically linked. When unclear, we included studies if it appeared that the large majority (ie., ≥90%) would be confirmed cases.</p>
Exposure	<p>Include: Any P²ROGRESS And Other Factors including but not limited to age; gender identity or sex; disease/condition or disability; number of comorbidities; social factors (place/state of residence; race, ethnicity, immigrant/refugee status, Indigenous identity, culture, language; occupation; religion, belief system; education, literacy; socioeconomic status; social capital); other (e.g., health behaviours).</p> <p>Exclude: Exposures that constitute laboratory findings, vital signs, or symptoms occurring after COVID-19 infection; any other exposures not of interest to NACI.</p>
Comparator	<p>Include: (a) no exposure to the P²ROGRESS And Other Factors; (b) the same P²ROGRESS And Other Factors experienced differently or to a different extent (e.g., different age group). When included, systematic reviews did not require a comparator.</p> <p>Exclude: Variations in disease severity within the pre-existing disease/condition or disability category (i.e., only interested in presence/absence of this risk factor); studies without a comparator.</p>
Outcome	<p>Include: Epidemiologic or analytic data from Canadian reports; from all other studies, magnitude of association (based on multivariate analysis adjusting for at minimum age and sex)[*] between the exposure and any of hospitalization; in-hospital length of stay; ICU admission; ICU length of stay; mechanical ventilation; mortality (all-cause or case fatality); severe disease (composite outcomes as defined by study authors); need for rehabilitation; stroke; kidney, liver, or cardiac injury; generic functionality and/or disability (composite scores of validated scales); generic quality of life (composite scores of validated scales).</p> <p>[*]Age and sex needed to be adjusted for at least one pre-existing condition. Pre-existing conditions (except immunocompromised, autoimmune, neurologic, mental health, frailty) needed to be adjusted for body mass index. ^b</p> <p>Exclude: All other outcomes; disease-specific functionality, disability, or quality of life; crude / unadjusted associations; studies where the focus is symptoms, biomarkers, clinical variables collected after disease onset.</p>
Timing	Any length of follow-up; at least 28 days for mortality
Setting	<ul style="list-style-type: none"> – For social risk factors among adults, only Canadian studies – For all other risk factors, Organization for Economic Cooperation and Development countries: https://www.oecd.org/about/document/list-oecd-member-countries.htm – Systematic reviews could include studies from any country
Language	English or French

It is made available under a [CC-BY-NC-ND 4.0 International license](#) .

^a The main scope differences versus the original review were: addition of a sample size requirement; inclusion of Canadian reports of any design; addition of children as an important population; inclusion of Canadian reports only for social factors; requirement of adjustment for more than age and sex for some risk factors; addition of organ injury and long-term outcomes of relevance to NACI.

^b Decisions for adjustment by body mass index were informed by the findings of our previous review and expert input from the Public Health Agency of Canada.

It is made available under a [CC-BY-NC-ND 4.0 International license](https://creativecommons.org/licenses/by-nc-nd/4.0/) .

Table 2. Summary of study characteristics for the studies contributing to the main synthesis, n=123 ^a

Characteristics	Number of studies	Proportion of studies (%)
STUDIES		
Design		
Retrospective cohort	92	74.8
Prospective cohort	29	23.6
Nested case-control	1	0.8
Systematic review ^b	1	0.8
Setting		
United States	55	44.7
United Kingdom	15	12.2
Mexico	12	9.8
Italy	9	7.3
Korea	6	4.9
Spain	6	4.9
Denmark	4	3.3
France	3	2.4
Other ^c	16	13.0
Funding source		
Non-industry	58	47.2
Industry	3	2.4
No funding	28	22.8
Not reported	36	29.3
PARTICIPANTS ^d		
Number of participants, median (range)	5,279 (34 to 61,414,470)	
Mean or median age in years, median (range)	62.0 (5.0 to 78.6)	
Sex/gender, median % male (range)	49.8 (0 to 94.0)	
Population analyzed		
General population	10	8.1
People with COVID-19	59	48.0
Hospitalized with COVID-19	62	50.4
With severe disease (in ICU or mechanically ventilated)	9	7.3
COVID-19 ascertainment		
RT-PCR	94	76.4
Laboratory confirmed (unspecified test)	25	20.3
Antigen test	3	2.4
Nucleic acid test	2	1.6
Rapid antibody test	2	1.6
EXPOSURES		
Pre-existing conditions	95	77.2
Gender identity/sex	70	56.9
Age (60-69 versus <60 years)	41	33.3
Other (health behaviours)	27	22.0
Number of comorbidities	21	17.1
Children	11	8.9
Exposure - occupation	4	3.3
Pregnancy	4	3.3
OUTCOMES		
Hospitalization	36	29.3

It is made available under a [CC-BY-NC-ND 4.0 International license](#) .

Characteristics	Number of studies	Proportion of studies (%)
In-hospital length of stay	4	3.3
ICU admission	27	22.0
ICU length of stay	1	0.8
Mechanical ventilation	22	17.9
Acute kidney injury	8	6.5
Ischemic stroke	1	0.8
Severe disease	28	22.8
Mortality	88	71.6

COVID-19=novel coronavirus disease 2019; ICU=intensive care unit; RT-PCR=reverse transcription polymerase chain reaction

^a Categories do not all add to 100%, as it is possible for studies to report on more than one category (e.g., used more than one COVID-19 ascertainment method, analyzed more than one population).

^b Included for β -thalassemia as no primary studies meeting the selection criteria were located.

^c Includes Belgium (n=1), , Germany (n=2), Ireland (n=1), multi-country (n=3), Netherlands (n=1), Sweden (n=2), Turkey (n=2), UK and Italy (n=1).

^d 24 studies did not report on patient mean or median age, one study in children did not report on patient sex/gender.

It is made available under a [CC-BY-NC-ND 4.0 International license](https://creativecommons.org/licenses/by-nc-nd/4.0/) .

Table 3. Risk factors identified that have large or very large associations with severe outcomes of COVID-19 and the corresponding level of certainty in the association

Risk factor (among people with COVID-19 unless otherwise specified)	Outcome of interest	Magnitude of association ^a (certainty in association) ^b
Age		
60-69 vs. <60 years	Hospitalization	Large (moderate)
	Mechanical ventilation	Large (low)
	Severe disease	Large to very large (low)
	Mortality	Large/very large (moderate/low)
Pre-existing conditions		
2 or more vs. no comorbidities	Hospitalization	Large (moderate)
	ICU admission	Large (low)
	Mechanical ventilation	Large (low)
	Mortality	Large (moderate)
Down syndrome ^c	Hospitalization	Large/very large (moderate/low)
	Mortality	Very large (moderate)
Type 1 diabetes ^c	Mortality	Large/very large (moderate/low)
Type 2 diabetes ^c	Mortality	Large/very large (moderate/low)
End-stage kidney disease ^c	Mortality	Large (moderate)
Motor neuron disease, multiple sclerosis, myasthenia gravis, or Huntington's disease ^{c,d}	Mortality	Large (moderate)
Chemotherapy in the past 12 months (Grade A-C) ^{c,e}	Mortality	Large/very large (low)
Radiotherapy in the past 6 months ^c	Mortality	Large (low)
Among people <70 years, metastatic cancer	Mortality	Large (low)
Parkinson's disease ^c	Mortality	Large (low)
Sickle cell disease or severe immunodeficiency ^c	Mortality	Large (low)
Solid organ transplant	Mortality	Large (low)
Transplant (any, including solid organ)	Hospitalization	Large (low)
Kidney transplant (due to stage 5 kidney disease) ^c	Mortality	Large (low)
Recent bone marrow or stem cell transplant ^c	Mortality	Large (low)
Vasculitis ^c	Hospitalization	Large (low)
Major psychiatric disorder (schizophrenia, schizoaffective disorder, or bipolar disorder) ^f	Mortality	Large (low)
	Hospitalization	Large (low)
Cerebral palsy ^c	Mortality	Large (low)
Diabetes (any type) in females	Mortality	Large (low)
Obesity class III vs. normal weight	Mortality	Large (low)
Previous cerebrovascular accident	Hospitalization	Large (moderate)
Obesity (all classes) vs. normal weight ^c	Hospitalization	Large (low)
Obesity class III vs. lower body mass index	Hospitalization	Large (low)
Obesity hypoventilation syndrome	Mechanical ventilation	Large (low)
Pregnancy (any stage)	Hospitalization	Large (low)
	ICU admission	Large (low)
	Severe disease (pneumonia)	Large (low)
Frailty ^{c,g}	Hospitalization	Large (low)
Chronic kidney disease	Hospitalization	Approaching large (low)
Diabetes (any)	Hospitalization	Approaching large (low)
Children (as defined by individual studies)		

It is made available under a [CC-BY-NC-ND 4.0 International license](https://creativecommons.org/licenses/by-nc-nd/4.0/) .

Risk factor (among people with COVID-19 unless otherwise specified)	Outcome of interest	Magnitude of association^a (certainty in association)^b
Children (0-19 years) vs. adults (50-59 years)	Hospitalization	Large reduction (low)
Age <1 month vs. >1 month	ICU admission	Large (low)
Immunodeficiency or immunosuppression (unspecified reason)	Mortality	Large to very large (low)
	Hospitalization	Large (low)
Hypertension	Hospitalization	Large (low)
2 or more vs. no chronic conditions ^h	Hospitalization	Large (moderate)
1 vs. no chronic conditions ^h	Hospitalization	Large (low)
1 or more vs. no chronic conditions ⁱ	ICU admission	Large (low)
	Mechanical ventilation	Large (low)
	Severe disease	Large (low)
Asthma	ICU admission	Large (low)
Endocrine condition ^j	Severe disease	Large (low)
Metabolic condition ^j	Severe disease	Large (low)
Malignancy ^j	Severe disease	Large (low)
Black race/ethnicity vs. White non-Hispanic	Mortality	Large (low)
	Hospitalization	Large (low)
Risk of exposure - occupation		
Healthcare workers (vs. non-healthcare workers)	Hospitalization	Large reduction (low)
	ICU admission	Large reduction (low)

ICU=intensive care unit; vs.=versus

^a Magnitude of associations are shown as large (OR or RR ≥ 2.00 , or ≤ 0.5 for reduction) or very large (OR or RR ≥ 4.00).

^b Confidence in the magnitude of the associations was determined by considering primarily consistency in findings across studies, directness of the setting and risk factors (e.g., type of healthcare system, uncertainty about risk factor clearly matching review criteria), precision (e.g., confidence intervals indicating possibility of little to no association), and potential risk of bias. Low confidence indicates that there may be an association and moderate means that the evidence indicates that there probably is an association of the magnitude stated.

^c The denominator for these risk factors is the general population. These were included when findings for the risk factor-outcome comparison were not available from studies of populations with COVID-19.

^d These conditions were grouped within a single study; evidence for the individual conditions is either unavailable or of lower certainty.

^e There was evidence of a large to very large increase in mortality with grades B and C chemotherapy from one large study. However, the stages of chemotherapy were not defined, and could not be ascertained from the study's authors. In the absence of adequate information, we have grouped all stages of chemotherapy (A, B, and C) together for analysis.

^f Defined by hospital discharge diagnosis, in combination with drug use (filled a prescription) for the condition in the past 6 months.

^g General population sample that may include community and non-community dwelling people. Measured on scales that include items such as weight loss, exhaustion, physical activity, walking speed, grip strength, overall health, disability, presence of disease, dementia, falls, mental wellbeing.

^h Includes congenital malformations, asthma, epilepsy, complex genetic syndromes, endocrine disorders, cancers, hematologic diseases, rheumatic diseases, autoimmune disease, autism or neurologic development impairment, gastrointestinal diseases, liver disease, renal disease, genitourinary diseases, cystic fibrosis or other chronic lung diseases, metabolic disorders, hydrocephalus, severe obesity, hypertension, otolaryngologic diseases, pregnancy, and 'complex chronic conditions'.

ⁱ Includes congenital malformations, asthma, epilepsy, complex genetic syndromes, endocrine disorders, cancers, hematologic diseases, rheumatic diseases, autism or neurologic development impairment, gastrointestinal diseases, genitourinary diseases, renal disease, cystic fibrosis or other chronic lung diseases, metabolic disorders, hydrocephalus, severe obesity, otolaryngologic diseases.

^j Categorizations according to ICD-10-CM codes and the Pediatric Medical Complexity Algorithm.

It is made available under a [CC-BY-NC-ND 4.0 International license](https://creativecommons.org/licenses/by-nc-nd/4.0/).

Table 4. Risk factors identified in Canadian reports and potential associations with severe outcomes of COVID-19

Risk factor	Reports (participants)	Conclusion
Social factors		
Living in long-term care	6 (≈2 million)	Probably associated with a large increase in mortality; the association may be very large for those in their 60s and 70s.
Being part of a visible minority population ^a	1 (8,796)	May be associated with increased mortality; magnitude uncertain and findings rely on ecological data and did not account for important covariates.
Living on a First Nations reserve	1 (9,715)	Rates of hospitalization and mortality appear lower compared to living off-reserve. The evidence does not account for potentially important covariates such as age.
Being a healthcare worker	2 (23,101)	Among those aged 30-70 years, may be associated with a large reduction in hospitalization, ICU admission, and mortality. Among healthcare workers, males appear to have higher rates of hospitalization, ICU admission, and mortality than females. Analyses did not account for important covariates.
Homelessness	2 (18,224)	Very uncertain about associations with mortality.
Being a homeless shelter worker	1 (1,734)	Very uncertain about associations with mortality.
Age and gender identity/sex		
Age 60-69 vs. <60 years	5 (235,481)	May be associated with a large increase in hospitalization, ICU admission, and mortality. For mortality there may also be a large association when compared to 50-59 years. The magnitude of association appears to account for pre-existing medical conditions and seems similar between sexes, though absolute rates are high among men in all age groups, particularly among those not residing in long-term care or delivering healthcare. Findings for hospitalization and ICU admission may be most applicable to those living outside of long-term care as there has been limited transfer to hospital and ICU from this setting.
Male vs. female	2 (11,259)	Rates of hospitalization and ICU admission appear to be lower among females >30 years; after excluding health care workers, long-term care residents, and school/daycare workers and attendees, the reduction in hospitalization and ICU admission was only observed in those >50 years. Case fatality appears to be lower among females than males in the same age group.
Pre-existing conditions		
One vs. no comorbidities	2 (15,875)	In all age groups, may have little-to-no association with mortality.
Two or more vs. <2 comorbidities	1 (6,350)	Among people aged 60-79 years, may be associated with a large increase in mortality. Study data were not adjusted for important covariates like residing in long-term care. Findings for people <60 years were limited by small sample size.
Compromised immunity	1 (1,734)	May be associated to some extent with an increase in mortality; the magnitude of association is uncertain due to a wide confidence interval. This association was adjusted for age, long-term care residency, smoking, renal disease, diabetes, and chronic obstructive pulmonary disease.
Malignancy	2 (11,259)	May be associated to some extent with an increase in mortality; the magnitude of association is uncertain due to lack of adjustment for important covariates.

It is made available under a [CC-BY-NC-ND 4.0 International license](https://creativecommons.org/licenses/by-nc-nd/4.0/) .

Risk factor	Reports (participants)	Conclusion
Pre-existing chronic conditions	2 (11,259)	Chronic obstructive pulmonary disease, diabetes, and renal disease may be associated with a large increase in mortality; these findings lacked adjustment for sex, BMI, or social factors, which may be important confounders. Other pre-existing conditions that are common among COVID-19 deaths include dementia and Alzheimer’s disease, pneumonia, hypertension, ischemic heart disease, respiratory failure, renal failure, chronic lower respiratory disease, nervous system disorders, and cancer. These findings are from epidemiologic data and not adjusted for important covariates.
Special populations		
Pregnancy	1 (137,901)	Among females of childbearing age with COVID-19, pregnancy may be associated with a large-to-very large increase in hospitalization and ICU admission. The findings were not adjusted for important covariates.
Children and young adults		
Pre-existing disease in young people	1 (9,525)	Among young adults, adolescents, and children, mortality from COVID-19 may be associated with having at least one comorbidity. This finding is not adjusted for important covariates.
Pre-existing disease in infants <1 year old	1 (27)	Among a small sample of infants with COVID-19, few (20%) who were hospitalized had a comorbid condition. The findings were not adjusted for any covariates.
Age in infants <1 year old	1 (27)	There appeared to be little-to-no difference in severe outcomes by age. The findings were not adjusted for any covariates.
Sex/gender in infants <1 year old	1 (27)	Among a small sample of infants with COVID-19, half of those hospitalized were male and half were female. The findings were not adjusted for any covariates.

COVID-19=novel coronavirus disease 2019; BMI=body mass index; ICU=intensive care unit

^a Defined as “Persons, other than Aboriginal peoples, who are non-Caucasian in race or non-white in colour.” Includes mainly South Asian, Chinese, Black, Filipino, Latin American, Arab, Southeast Asian, West Asian, Korean, Japanese.