

SUPPLEMENTARY DOCUMENT

COVID-19 due to the B.1.617.2 (Delta) variant compared to B.1.1.7 (Alpha) variant of SARS-CoV-2: two prospective observational cohort studies

Kerstin Kläser, Erika Molteni, Mark Graham, Liane Canas, Marc F Österdahl, Michela Antonelli, Liyuan Chen, Jie Deng, Benjamin Murray, Eric Kerfoot, Jonathan Wolf, Anna May, Ben Fox, Joan Capdevila, The COVID-19 Genomics UK (COG-UK) consortium, Marc Modat, Prof Alexander Hammers, Prof Tim D. Spector, Claire J. Steves, Carole H. Sudre, Prof Sebastien Ourselin[†], Prof Emma L. Duncan[†]

Supplementary Methods

The COVID Symptom Study (administered through the ZOE COVID Study App) was launched jointly by ZOE Limited and King's College London on March 24, 2020. Data were acquired through a mobile application.¹⁷ Participants can log data for themselves and can proxy-report for other individuals (e.g., spouses, elderly relatives).

At time of registration through the app, all participants provide consent for their data to be used for research. Participants can withdraw from the study at any time, with their data, (including proxy-reported data) subsequently excluded from analysis.

The app was tested both before launch and before version updates. The app usage workflow was described in the earliest publication about the COVID Symptom Study (doi: 10.1126/science.abc0473). The team of app developers monitor the statistics of app usage and users' input daily, to assess for faults (e.g., problems in the app downloads or logging). No major disruptions were detected during this study. Although the questions asked through the app have changed over time, the last change to COVID-19 symptom direct questioning was 4 November 2020 (Supplementary Table S2); thus all symptom questions were asked of all individuals during both time periods reported in the current study.

Conjointly to the app development, software for data extraction, curation and analytics was developed, which guarantees the repeatability of the data curation over time and the consistency on different timestamps, according to stringent predefined criteria (filters). The software, based on Python language, is called ExeTera;³⁶ documentation and associated code can be downloaded here: <https://arxiv.org/abs/2011.00867>

Currently 92% of UK adults own a smartphone, with little difference according to socioeconomic status (<https://www.statista.com/statistics/300384/mobile-phoneusage-in-the-uk-by-socio-economic-group/>).

Supplementary Table S1. Incidence (%) of Alpha and Delta variants of SARS-CoV-2 in United Kingdom, in the weeks starting 30 December 2020 - 5 May 2021 and 26 May - 7 July 2021

(https://assets.publishing.service.gov.uk/government/uploads/system/uploads/attachment_data/file/975754/Variants_of_Concern_Technical_Briefing_8_Data_England.xlsx; GISAID <https://covariants.org>).

Week starting date	Alpha (B.1.1.7)	Delta (B.1.617.2)
30 December 2020	78·1	0
6 January	82·3	0
13 January	87·6	0
20 January	90·8	0
27 January	93·8	0
3 February	95·7	0
10 February	97·4	0
17 February	98·1	0
24 February	98·6	0
3 March	98·8	0
10 March	98·9	0
17 March	>99	0
24 March	98	0
31 March	98	0
7 April	95	2
14 April	92	6
21 April	87	9
28 April	76	24
5 May	71·5	25·8
26 May	19·3	80·0
2 June	9·4	90·2
9 June	5	95

16 June	2	98
23 June	2	98
30 June	<1	>99
7 July	<1	>99

Supplementary Table S2. List of symptom questions asked by the ZOE Symptom Study app after 4 November 2020.

Symptom	COVID Symptom Study app question
Fever	Fever (at least 37.8C or 100F)
Persistent Cough	Persistent cough (coughing a lot for more than an hour or 3 or more coughing episodes in 24 hours)
Fatigue	Unusual fatigue... (no; mild fatigue; severe fatigue/ I struggle to get out of bed)
Dyspnoea	Shortness of breath or trouble breathing (no; yes mild symptoms/ slight shortness of breath during ordinary activity; yes significant symptoms/ breathing is comfortable only at rest; yes, severe symptoms/ breathing is difficult even at rest).
Anosmia/Dysosmia	Loss of smell
Ageusia	Loss of taste
Hoarse Voice	Unusually hoarse voice
Chest Pain	Unusual chest pain or tightness in your chest
Abdominal Pain	Unusual abdominal pain or stomach-ache
Diarrhoea	Diarrhoea
Stools	How many loose stools in the last 24 hours?
Headache Frequency	How often are you experiencing headaches?
Delirium	Confusion, disorientation or drowsiness
Eye Soreness	Do your eyes have any unusual eye-soreness or discomfort (e.g. light sensitivity, excessive tears, or pink/red eye)?
Anorexia	Skipping meals
Headache	Headache
Nausea	Nausea or vomiting
Dizziness	Dizziness or light-headedness

Sore Throat	Sore or painful throat
Myalgias	Unusual strong muscle pains or aches
Red Welts	Raised, red, itchy welts on the skin or sudden swelling of the face or lips
Blisters	Red/purple sores or blisters on your feet, including your toes
Allergy Exacerbation	Increase in your usual allergy symptoms
Rashes	Rash on your arms or torso
'Sensitive Skin'	Strange, unpleasant sensations in your skin like pins & needles or burning
Hair Loss (alopecia)	Unusual hair loss
Low Mood	Feeling down, depressed or hopeless
Brain Fog	Loss of concentration or memory (brain fog)
Dysosmia	Altered smell (things smell different to usual)
Dysgeusia	Altered taste (things taste different to usual)
Rhinorrhoea	Runny nose
Sneezing	Sneezing more than usual
Ear Pain	Earache
Tinnitus	Ringing in your ears
Lymphadenopathy	Swollen neck glands
Palpitations	Unusually fast or irregular heartbeat (palpitations)
Arthralgias	Unusual joint pains or aches
Mouth Ulcers	Mouth or tongue ulcers
Tongue Changes	Changes to tongue surface

Supplementary Table S3. Number of individuals presenting with a given symptom over the course of the disease, ranked according to the order during the Alpha period.

Symptom onset between December 28, 2020 and May 6, 2021 was attributed to infection with the Alpha variant, and symptom onset between May 26, 2021 and July 1, 2021, to infection with the Delta variant.

	Alpha (n=3,581) N (%)	Delta (n= 3,581) N (%)
Fatigue	2,613 (73.0)	2625 (73.3)
Headache	2,387 (66.7)	2,668 (74.5)
Anosmia/Dysosmia	2,190 (61.2)	2,287 (63.9)
Rhinorrhoea	1,935 (54.0)	2,557 (71.4)
Sneezing	1,564 (43.7)	2,111 (59.0)
Sore throat	1,515 (42.3)	2,022 (56.5)
Persistent cough	1,457 (40.7)	1,813 (50.6)
Dizziness	1,233 (34.4)	1,281 (35.8)
Myalgias	1,135 (31.7)	1,010 (28.2)
Chills or shivers (rigors)	1,026 (28.7)	1,260 (35.2)
Anorexia	996 (27.8)	1,015 (28.3)
'Brain fog'	922 (25.8)	1,064 (29.7)
Chest pain	912 (25.5)	778 (21.7)
Dyspnoea	908 (25.4)	774 (21.6)
Eye soreness	901 (25.2)	1041 (29.1)
Fever	883 (24.7)	1548 (43.2)
Hoarse voice	844 (23.6)	1286 (35.9)
'Low mood'	843 (23.5)	709 (19.8)

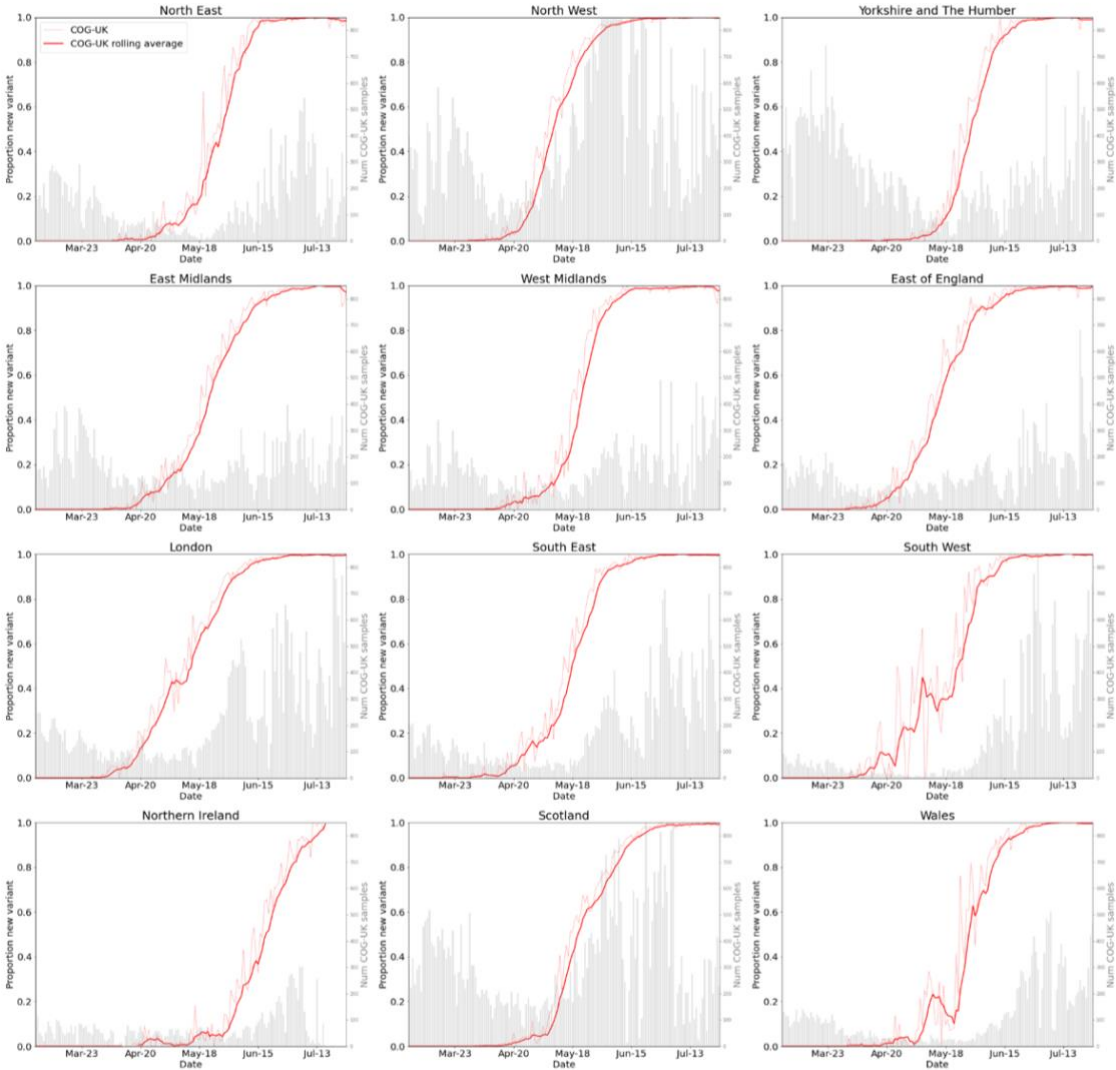
Diarrhoea	759 (21.2)	663 (18.5)
Nausea	719 (20.1)	641 (17.9)
Abdominal pain	570 (15.9)	528 (14.7)
Lymphadenopathy	565 (15.8)	701 (19.6)
Tinnitus	502 (14.0)	559 (15.6)
Delirium	502 (14.0)	543 (15.2)
Earache	482 (13.5)	626 (17.5)
Sensitive skin	427 (11.9)	334 (9.3)
Palpitations	324 (9.1)	318 (8.9)
Rash	167 (4.7)	154 (4.3)
Red welts on face or lips	132 (3.7)	90 (2.5)
Hair loss (alopecia)	44 (1.2)	43 (1.2)
'Blisters on feet'	36 (1.0)	46 (1.3)

Supplementary Table S4. Risk of a given symptom over the first 28 days of illness, and of a symptom lasting for at least 7 days, comparing Delta with Alpha infection. Bold font indicates that the significance survives FDR correction.

	Risk of symptom within first 28 days of illness		When present, risk of symptom lasting at least 7 days (note: all symptoms presented by Day 21 of illness)	
	OR (95%CI)	p-value	OR (95%CI)	p-value
Fatigue	1.27 [1.09 - 1.48]	0.003	0.78 [0.65 - 0.93]	0.005
Headache	1.59 [1.35 - 1.86]	<0.001	0.67 [0.55 - 0.81]	<0.001
Anosmia / Dysosmia	0.98 [0.85 - 1.12]	0.728	1.12 [0.92 - 1.36]	0.246
Rhinorrhoea	1.26 [1.09 - 1.45]	0.002	0.68 [0.53 - 0.87]	0.002
Sore throat	1.73 [1.50 - 2.00]	<0.001	0.78 [0.61 - 1.01]	0.056
Sneezing	0.99 [0.86 - 1.14]	0.915	0.63 [0.45 - 0.90]	0.011
Persistent cough	1.64 [1.43 - 1.88]	<0.001	0.81 [0.65 - 1.02]	0.075
Dizziness	1.08 [0.93 - 1.25]	0.302	0.82 [0.60 - 1.13]	0.233
Chills or shivers (rigors)	1.35 [1.17 - 1.56]	<0.001	0.40 [0.23 - 0.69]	0.001
Myalgias	0.99 [0.85 - 1.14]	0.864	0.67 [0.46 - 0.99]	0.042
Fever	2.82 [2.44 - 3.26]	<0.001	0.78 [0.51 - 1.21]	0.266
Anorexia	1.62 [1.39 - 1.88]	<0.001	1.11 [0.78 - 1.57]	0.566
'Brain fog'	1.01 [0.86 - 1.18]	0.927	0.79 [0.57 - 1.10]	0.162
Eye soreness	1.24 [1.06 - 1.44]	0.006	0.73 [0.49 - 1.09]	0.121
Hoarse voice	1.82 [1.56 - 2.11]	<0.001	0.78 [0.54 - 1.11]	0.166
Chest pain	0.87 [0.74 - 1.03]	0.099	0.61 [0.41 - 0.91]	0.016
Dyspnoea	0.82 [0.69 - 0.96]	0.017	0.73 [0.50 - 1.06]	0.094
'Low mood'	0.94 [0.80 - 1.12]	0.497	0.74 [0.50 - 1.10]	0.138
Diarrhoea	0.94 [0.79 - 1.12]	0.502	0.93 [0.58 - 1.49]	0.772
Nausea	1.15 [0.97 - 1.36]	0.118	0.67 [0.41 - 1.09]	0.102
Abdominal pain	1.06 [0.87 - 1.28]	0.568	0.47 [0.25 - 0.88]	0.018
Lymphadenopathy	1.18 [0.99 - 1.41]	0.067	0.63 [0.37 - 1.06]	0.079
Delirium	1.23 [1.02 - 1.48]	0.027	0.94 [0.58 - 1.53]	0.815
Earache	1.12 [0.93 - 1.36]	0.233	0.84 [0.48 - 1.47]	0.539
Tinnitus	0.90 [0.73 - 1.12]	0.359	0.64 [0.35 - 1.15]	0.136

Sensitive skin	0.98 [0.79 - 1.23]	0.876	0.76 [0.35 - 1.65]	0.490
Palpitations	0.86 [0.67 - 1.10]	0.236	0.88 [0.43 - 1.77]	0.712
Rash	1.13 [0.81 - 1.57]	0.472	1.09 [0.39 - 3.04]	0.863
Red welts on face or lips	0.85 [0.57 - 1.26]	0.416	0.44 [0.09 - 2.14]	0.309
Hair loss	0.45 [0.21 - 0.94]	0.034	0.64 [0.11 - 3.86]	0.630
'Blisters' on feet	1.35 [0.74 - 2.47]	0.321	0.97 [0.09 - 10.16]	0.977

Supplementary Figure 1. Presence of Delta variant, as a proportion of total SARS-COV-2 positive tests sequenced at that time within England (nine regions), Scotland, Wales and Northern Ireland, using genomic surveillance data (COG-UK). Grey bars indicate the number of samples sequenced by COG-UK daily. The solid red line shows the proportion of sequenced samples that were identified as Delta variant vs. the total sequenced samples, over time.



Supplementary Table S5. Spearman correlations of incidence and variant proportion with reinfection (both direct and bootstrapped data).

Comparison of these two distributions of correlations in each region, using the Mann-Whitney U test (using bootstrapped data).

UK Region	Spearman correlation of number of positive tests and numbers of reinfections		Spearman correlation of proportion of Delta variant [as proportion of total circulating SARS-CoV-2) and numbers of reinfections		Comparison p-value
	Direct	Bootstrapped (median [IQR])	Direct	Bootstrapped (median [IQR])	
South East	45.83	45.85 [31.55; 58.47]	65.14	62.08 [51.57; 72.28]	<0.0001
East of England	58.20	58.90 [48.97; 69.78]	50.77	52.86 [40.90; 62.00]	0.002
London	62.24	63.07 [51.42; 72.86]	57.89	59.46 [50.38; 70.17]	0.099
Midlands	85.43	82.76 [78.57; 86.28]	49.93	44.41 [32.90; 57.31]	<0.0001
North East and Yorkshire	52.85	50.68 [38.72; 61.97]	42.85	41.04 [28.35; 53.32]	<0.0001
North West	61.81	64.65 [55.93; 72.67]	68.48	68.71 [60.93; 75.45]	0.008
South West	79.05	80.30 [71.48; 88.94]	47.16	44.34 [30.72; 59.87]	<0.0001
Scotland	68.95	65.77 [53.25; 75.66]	51.26	47.52 [33.25; 60.77]	<0.0001
Wales	59.39	63.09 [54.29; 69.18]	51.66	53.41 [37.61; 64.98]	<0.0001