

1 Investigating SARS-CoV-2 breakthrough infections per variant and vaccine type

2

3 Jozef Dingemans^{1*}, Brian M.J.W. van der Veer^{1*}, Koen M.F. Gorgels², Volker Hackert^{2,3}, Audrey Y.J.
4 Hensels², Casper D.J. den Heijer^{2,3}, Christian J.P.A Hoebe^{1,2,3}, Paul H.M. Savelkoul¹, Lieke B. van
5 Alphen¹.

6 1. Department of Medical Microbiology, Care and Public Health Research Institute (CAPHRI),
7 Faculty of Health, Medicine and Life Sciences, Maastricht University Medical Centre (MUMC+),
8 PO box 5800, 6202 AZ Maastricht, The Netherlands.

9 2. Department of Sexual Health, Infectious Diseases and Environmental Health, South Limburg
10 Public Health Service, PO Box 33, 6400 AA Heerlen, The Netherlands.

11 3. Department of Social Medicine, Care and Public Health Research Institute (CAPHRI), Faculty of
12 Health, Medicine and Life Sciences, Maastricht University, PO box 616, 6200 MD Maastricht, The
13 Netherlands.

14 *These authors contributed equally to this work.

15

16 Abstract

17 Breakthrough SARS-CoV-2 infections have been reported in fully vaccinated individuals, in spite of
18 the high efficacy of the currently available vaccines, proven in trials and real-world studies. Several
19 variants of concern (VOC) have been proffered to be associated with breakthrough infections
20 following immunization. In this study, we investigated 378 breakthrough infections recorded
21 between January and July 2021 and compared the distribution of SARS-CoV-2 genotypes identified in
22 225 fully vaccinated individuals to the frequency of circulating community lineages in the region of
23 South Limburg (The Netherlands) in a week-by-week comparison. Although the proportion of
24 breakthrough infections was relatively low and stable when the Alpha variant was predominant, the
25 rapid emergence of the Delta variant lead to a strong increase in breakthrough infections, with a
26 higher relative proportion of individuals vaccinated with Oxford-AstraZeneca or J&J/Janssen being
27 infected compared to those immunized with mRNA-based vaccines. A significant difference in
28 median age was observed when comparing fully vaccinated individuals with severe symptoms (83
29 years) to asymptomatic cases (46.5 years) or individuals with mild-to-moderate symptoms (42
30 years). There was no association between SARS-CoV-2 genotype or vaccine type and disease
31 symptoms. Interestingly, symptomatic individuals harbored significantly higher SARS-CoV-2 loads
32 than asymptomatic vaccinated individuals and breakthrough infections caused by the Delta variant
33 are associated with increased viral loads compared to those caused by the Alpha variant. Altogether,
34 these results indicate that the emergence of the Delta variant might have lowered the efficiency of
35 particular vaccine types to prevent SARS-CoV-2 infections and that, although rare, the elderly are
36 particularly at risk of becoming severely infected as the consequence of a breakthrough infection.

37 NOTE: This preprint reports new research that has not been certified by peer review and should not be used to guide clinical practice.

38 Introduction

39 Since its discovery in December 2019¹, SARS-CoV-2 has infected more than 250 million people and
40 caused about 5 million deaths². Although SARS-CoV-2 has a limited mutation rate of about 2
41 mutations per month³, which can be attributed to its 3' to 5' exonuclease proofreading activity⁴, its
42 rapid expansion across the globe has led to the emergence of numerous variants^{5,6}. Whereas the
43 majority of variants initially harbored mutations outside the gene encoding the spike protein, a
44 number of variants have emerged with mutations in the spike protein that affect infectivity or
45 immune evasion. For example, the mutation leading to the D614G substitution in the spike protein
46 emerged soon after SARS-CoV-2 spread to Europe at the beginning of the first wave⁷. This mutation
47 greatly affected the fitness of SARS-CoV-2 by stabilizing the open conformation of the spike protein,
48 enhancing viral infectivity and leading to dominance of this variant across the globe⁷⁻⁹. More
49 recently, a number of variants of concern (VOC) have emerged that harbor mutations in the receptor
50 binding domain (RBD) of the spike protein, enhancing the affinity for the human angiotensin-
51 converting enzyme 2 (ACE2) receptor¹⁰ or leading to evasion of the immune system¹¹. In November
52 2020, the B.1.1.7 variant was first reported as it quickly gained dominance in the UK, imposing a
53 great burden on the healthcare system due to increased infectivity and slightly heightened
54 mortality¹²⁻¹⁴. Both the N501Y and V69/H70del mutations in the spike protein of B.1.1.7 have been
55 shown to enhance its infectivity^{10,14,15}, while the Y144del mutation was found to be in the antigenic
56 supersite¹⁶. Although the B.1.1.7 variant has been associated with enhanced infectivity, it has been
57 shown that sera from previously infected and vaccinated individuals as well as monoclonal
58 antibodies can efficiently neutralize this variant *in vitro*¹⁷⁻¹⁹. Nevertheless, two other VOC (B.1.351
59 and P.1) have been identified that exhibit significantly reduced neutralization by monoclonal
60 antibodies or sera from recovered or vaccinated individuals^{6,11,17-23}. The B.1.351 variant that was first
61 reported in South Africa and the P.1 variant that was identified in Manaus, Brazil, share the E484K
62 and K417N mutations in the RBD that are associated with immune evasion as well as the N501Y
63 mutation, which is also present in B.1.1.7 and presumably enhances infectivity. Finally, a fourth VOC
64 (B.1.617.2) has recently been identified in India, harboring the L452R and T478K mutations in RBD of
65 the spike protein, showing moderately reduced neutralization and increased transmissibility
66 compared to B.1.1.7^{20,24-26}.

67 Although many studies have assessed the potential of these variants to evade the immune system *in*
68 *vitro*, only a limited number of studies have looked into the distribution of variants that can cause
69 infections in fully vaccinated individuals. Monitoring these so-called post-vaccination 'breakthrough
70 variants' is imperative since they may signal widespread reduced vaccine efficacy early on. In this
71 study, we have compared the occurrence of variants causing infections in 378 fully vaccinated
72 individuals to the prevalence of variants that were identified by regional surveillance of SARS-CoV-2
73 in the South Limburg region of the Netherlands from January to July 2021.

74

75

76

77

78

79

80

81 **Methods**

82 **Case definition**

83 In this study, cases were defined as patients who were fully vaccinated against SARS-CoV-2 (≥ 14 days
84 post-2nd dose of Pfizer-BioNTech, Moderna or Oxford-AstraZeneca vaccine or ≥ 14 days post 1 dose
85 of Johnson&Johnson vaccine) who had onset of COVID-19 related symptoms and subsequently
86 tested positive by real-time polymerase chain reaction (RT-PCR) or antigen test for SARS-CoV-2.

87 Cases were defined as symptomatic if they reported COVID-19 related symptoms, including common
88 cold symptoms (nasal cold, runny nose, sneezing or sore throat), cough, elevated temperature or
89 fever (temperature $> 38^{\circ}\text{C}$), loss of taste or smell, diarrhea, nausea, fatigue, headache and
90 generalized pain. Cases were defined as asymptomatic if they reported no COVID-19 related
91 symptoms at the time of their positive test and developed no symptoms during the 7 day follow-up.

92 Symptomatic cases were further subdivided in mild-moderate and severe cases. All cases that were
93 hospitalized or had a fatal outcome were classified as severe. All other symptomatic cases were
94 classified as mild-moderate.

95 All post-vaccination breakthrough infections described were investigated by the Public Health
96 Service South Limburg, the Netherlands. Cases or relevant staff members were contacted in order to
97 gain missing data.

98 **Sampling and RT-PCR assay**

99 Trained personnel collected combined nasopharyngeal/oropharyngeal swabs in viral transport
100 medium. Samples were sent either to the Medical Microbiological Laboratory of Maastricht
101 University Medical Centre (MUMC+) (workflow 1) or Synlab Belgium (workflow 2) for laboratory
102 confirmation of SARS-CoV-2 via RT-PCR assay.

103 *Workflow 1: RT-PCR analysis at the MUMC+*

104 Samples were collected and transported in viral transport medium (Mediaproducts, The
105 Netherlands). For RNA extraction, 900 μl of clinical sample was mixed with 900 μl of Chemagic Viral
106 Lysis Buffer (Perkin-Elmer) and RNA was extracted from samples using the Chemagic Viral DNA/RNA
107 300 Kit H96 (Perkin-Elmer) on the Chemagic 360 system (Perkin-Elmer). A multiplex RT-PCR was
108 performed using the N1-gene and E-gene as targets, including the immediate early gene of mouse
109 cytomegalovirus as an internal control (Table S1). cDNA synthesis and PCR amplification were
110 combined using the TaqPath™ 1-Step RT-qPCR Master Mix, CG (Applied Biosystems, US). Thermal
111 cycling was performed using the Quantstudio 5 Real-Time PCR System (Applied Biosystems, US).
112 Oligonucleotides were synthesised and provided by Biologio (Netherlands) (Table S1). Only the CT-
113 value obtained for the N1 target was reported.

114 *Workflow 2: RT-PCR analysis at Synlab Belgium*

115 Alternatively, RT-PCR analysis was performed at Synlab Belgium using the ORF1ab, S-gene, and N-
116 gene as targets. CT-values were reported for all three targets.

117 **Sequencing of SARS-CoV-2-positive samples**

118 Sequencing was performed using the PCR tiling of SARS-CoV-2 virus with Native Barcoding Expansion
119 96 (EXP-NBD196) protocol (Version: PTCN_9103_v109_revH_13Jul2020) of Oxford Nanopore
120 technologies, with minor modifications and using the primers previously published by Oude
121 Munnink et al.²⁷ Briefly, the only modifications were extending the barcode and adaptor ligation

122 steps up to 60 min and loading 48 samples per flow cell. Bioinformatic analysis was performed using
123 an in-house developed pipeline MACOVID (<https://github.com/MUMC-MEDMIC/MACOVID>) that is
124 based on Artic v1.1.3. Pangolin lineages were assigned using the Pangolin COVID-19 Lineage Assigner
125 web application on <https://pangolin.cog-uk.io/>.

126 Consensus sequences with >3000 Ns were considered as low quality and therefore excluded for
127 further analyses. However, consensus sequences <10000 Ns with a complete spike protein sequence
128 were included.

129

130 **Mapping of non-lineage defining mutations on SARS-CoV-2 spike trimer model**

131 The pdb file of the model 7D3F of the structure of the SARS-CoV-2 (Wuhan-Hu-1 strain) spike trimer
132 in closed conformation as determined via cryo-electron microscopy by Xu *et al*²⁸ (doi:
133 10.2210/pdb7DF3/pdb) was visualized using the UCSF Chimera protein viewer²⁹. Non-lineage
134 defining mutations were highlighted in red using the labeling tool in the Chimera protein viewer.

135

136 **Statistical analysis**

137 All statistical analyses were performed using GraphPad Prism 9.0.0 software (GraphPad, La Jolla, CA,
138 USA). A Mann-Whitney test was used to compare CT-values from breakthrough infections with the
139 Alpha variant vs infections caused by the Delta variant. A Kruskal-Wallis test was performed to
140 compare median age, time of positive test post 2nd dose, and CT value between groups (symptoms
141 or vaccine types). Dunn's multiple comparison test was performed *post hoc* in case of a significant
142 difference to identify which groups significantly differed. Fisher's exact test was performed to
143 investigate the relationship between SARS-CoV-2 genotype (Alpha or Delta) and symptoms
144 (asymptomatic or symptomatic), while a Chi square test was performed to investigate the
145 relationship between vaccine type and symptoms.

146 **Medical Ethical Approval**

147 All data were retrieved from regular infectious disease control activities and were deidentified. The
148 Medical Review Ethics Committee of the Maastricht UMC+ confirmed that the Medical Research
149 Involving Human Subjects Act (WMO) does not apply to the above mentioned study and that an
150 official approval of this study by the committee is not required (METC reference number 2021-
151 2838).

152

153

154

155

156

157

158

159

160

161

162 Results

163 Description of the overall study population

164 In total, 378 breakthrough infections were recorded in the South Limburg region of the Netherlands
165 until the end of week 28. This study population had a median age of 45 years, consisted for 63% of
166 women and most individuals (62%) received 2 doses of the Pfizer-BioNTech vaccine (Table 1). The
167 majority of cases were detected via community screening, while 8% of cases were related to care
168 facilities (4% residents + 4% employees) and 14 cases (3.7%) were related to outbreaks (Table 1,
169 Table S2). The majority of people (75%) experienced mild to moderate symptoms and there were 2
170 fatalities amongst the 7 severe cases (Table 1, Table S2).

171

172 **Table 1.** Characteristics of the study population.

	Mean	Median	Range
Age (years)	46	45	18-96
	N	%	
Sex			
Female	239	63.2	
Male	137	36.2	
Unknown	2	0.5	
Vaccine			
Pfizer-BioNTech	234	61.9	
Moderna	9	2.4	
Oxford-AstraZeneca	60	15.9	
J&J/Janssen	72	19.0	
Other	1	0.3	
Unknown	2	0.5	
Setting			
Healthcare professionals	18	4.8	
Care Facility (employees)	15	4.0	
Care Facility (residents)	15	4.0	
Community	297	78.6	
Other	33	8.7	
Outbreak	14	3.7	
Symptoms			
Asymptomatic	82	21.7	
Mild-Moderate	285	75.4	
Severe	7	1.9	
Unknown	4	1.1	
Fatalities	2	0.5	

173

174 Evolution of breakthrough cases in function of time and per vaccine type

175 The first individuals in the region of South Limburg received their 2nd dose of the Pfizer-BioNTech
176 vaccine in week 4 and the number of people who were fully vaccinated steadily increased starting
177 from week 6 (Figure 1A). The majority of people received an mRNA-based vaccine (mostly Pfizer-
178 BioNTech) and only starting from week 9, the first individuals were fully vaccinated with Oxford-
179 AstraZeneca, while the first fully vaccinated individuals who received the J&J/Janssen vaccine started
180 accumulating in week 21.

181 The first breakthrough infections were reported in week 8 and continually occurred starting from
182 week 11, with a frequency ranging between 0.3 to 13.7% relative to the total number of infections
183 (Figure 1A). The number of breakthrough cases steeply increased in week 27, after most COVID-19
184 measures were relaxed in The Netherlands and comprised disproportionately higher numbers of
185 individuals who received Oxford-AstraZeneca or J&J/Janssen compared to the mRNA-based vaccines
186 Pfizer-BioNTech/Moderna (Figure 1B). This was reflected by a considerably lower number of
187 breakthrough cases relative to the number of administered vaccines for Pfizer-BioNTech/Moderna
188 (0.14%) compared to Oxford-AstraZeneca (0.89%) or J&J/Janssen (0.46%) (Table 2).

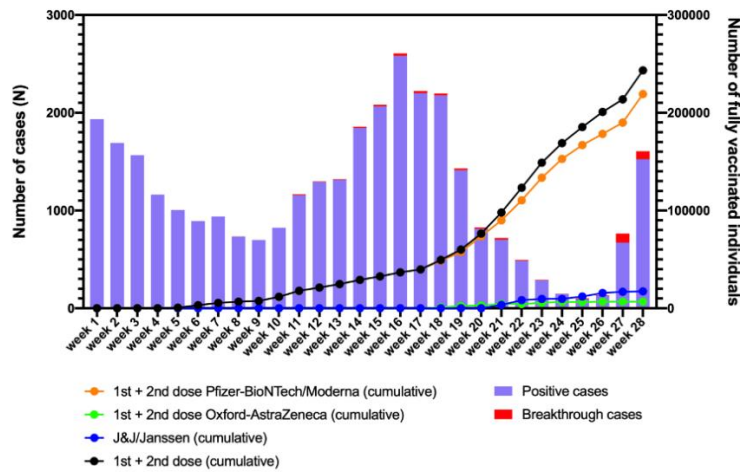
189

190 **The distribution of SARS-CoV-2 variants in fully vaccinated individuals generally coincides with** 191 **their regional prevalence**

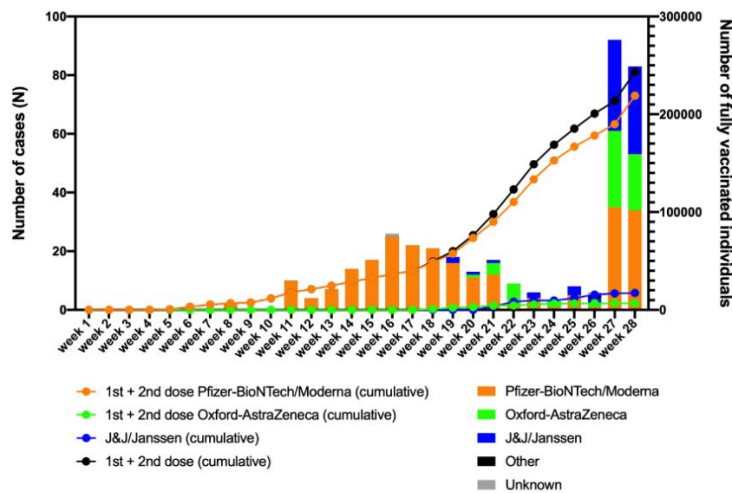
192 From the 378 breakthrough cases that were identified from week 2 until week 28, 225 were
193 successfully genotyped via whole-genome sequencing. The remaining samples had a Ct-value >32
194 (n=19), were unavailable for sequencing (n=83), or did not comply to quality requirements of
195 sequencing (n=51).

196 At the same time, regional surveillance of SARS-CoV-2 variants was performed on a weekly base. The
197 non-VOC genotypes, which mainly consisted of the B.1.177 and B.1.221 lineages that have been
198 prominent in the region since the summer of 2020³⁰, were responsible for more than 50% of SARS-
199 CoV2 infections up to week 7, after which the Alpha variant became dominant (Figure 1B). From this
200 point, the frequency of Alpha infections rose quickly, constituting >90% of SARS-CoV-2 cases in week
201 11. In week 8 the first two breakthrough cases were identified, belonging to the Alpha variant
202 (Figure 1B). Starting from week 11, the great majority of SARS-CoV-2 breakthrough infections were
203 caused by the Alpha variant, with the exception of an occasional Gamma or a non-VOC infection
204 (Figure 1C). The first breakthrough infection caused by the Delta variant was detected in week 25,
205 when this variant was responsible for 50% of cases in the region and became dominant. As COVID-19
206 measures were relaxed in The Netherlands by the end of week 25, the number of breakthrough
207 cases peaked during week 27 and 28, of which the great majority was caused by the Delta variant
208 that was also dominant at that moment as determined via regional surveillance. The proportion of
209 breakthrough infections caused by the Delta variant seems to be slightly higher than its share in
210 genomic surveillance (100% vs 64% in week 26, 95% vs 84% in week 27, and 100% vs 95% in week
211 28).

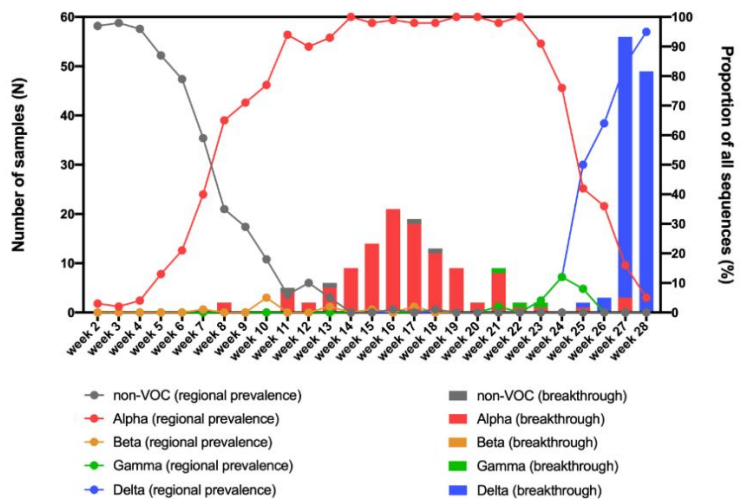
A



B



C



212

213 **Figure 1. A.** Overview of the number of fully vaccinated individuals and breakthrough infections in
 214 function of time in the region of South Limburg. **B.** Breakthrough infections per vaccine in function of
 215 time. **C.** Evolution of the prevalence of Non-VOC and VOC lineages in the community (lines) as well
 216 as the distribution of variants causing breakthrough infections (bars) in function of time in the region
 217 of South Limburg. The numbers represented by bars are plotted on the left y-axis, while the numbers
 218 represented by dots/lines are plotted on the right y-axis.

219 **Table 2.** Overview of breakthrough cases and administered vaccines per vaccine type.

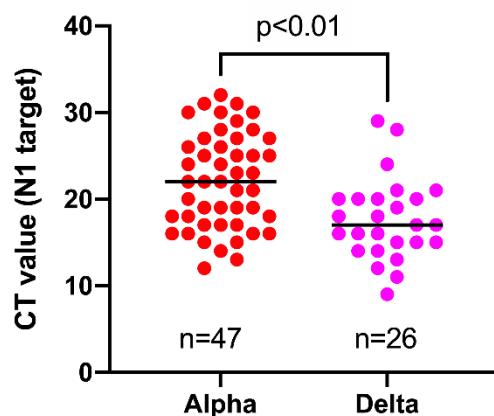
	Pfizer-BioNTech/ Moderna	Oxford- AstraZeneca	J&J/Janssen
N (breakthrough cases)	243	60	72
N (administered vaccines in week 26)	178,267	6,762	15,652
% breakthrough per vaccine^a	0.14%	0.89%	0.46%

220 ^aThe percentage of breakthrough cases per vaccine was calculated by dividing the total number of
221 breakthrough cases recorded until the end of week 28 by the total number of administered vaccines
222 in week 26, to ensure only vaccines received ≥ 14 days were included.

223

224 **Breakthrough cases infected with the Delta variant harbor a higher viral load compared to cases** 225 **infected with the Alpha variant**

226 To investigate whether infections caused by the Delta variant are associated with increased viral
227 loads compared to infections with the Alpha variant in fully vaccinated individuals, we compared the
228 CT values obtained for the N1 target as determined via a single workflow. A significantly lower CT
229 value (median CT-value = 17) was observed for breakthrough infections caused by the Delta variant
230 vs those caused by the Alpha variant (median CT-value = 22) (Figure 2).



231

232 **Figure 2.** Comparison of CT values obtained by the same workflow for samples harboring Alpha
233 versus Delta variant in breakthrough cases.

234

235 **Non-lineage defining mutations in the spike protein are mainly concentrated in the N-terminal** 236 **domain amongst isolates causing breakthrough infections.**

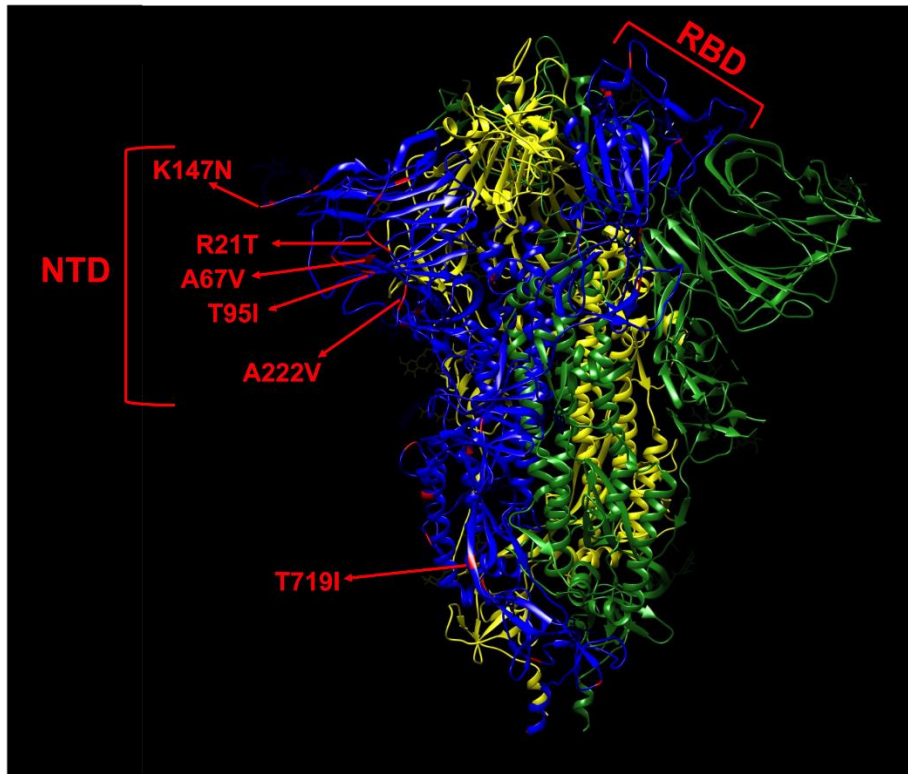
237 Of the 225 isolates that were sequenced, 4 were non-variants of concern (non-VOC), 112 Alpha
238 variant, 3 Gamma, and 106 Delta variant. In total, 46 non-lineage defining mutations were identified
239 in the spike protein of the 225 isolates that were sequenced (Table 2), of which nearly half (19/46)
240 were located in the N-terminal domain, while only a small minority (5/46) was found in the receptor
241 binding domain (RBD) (Table 3 & Figure 3), despite both domains being of comparable size. Nine of
242 the ten most frequent mutations ($>1\%$ frequency) occurred in the N-terminal domain (6/10) or in the
243 C-terminal domain (3/10) and the two most observed mutations R21T (10.7%) and A222V (28.4%)
244 were identified in at least 2 different variant backgrounds.

245 **Table 3.** Non-lineage-defining mutations in the spike protein found in this study.

Mutation	N ^a	Frequency (%)	N (%) in non-VOC	N (%) in Alpha	N (%) in Gamma	N (%) in Delta
L5F	8	3.6%	0 (0%)	8 (7%)	0 (0%)	0 (0%)
S12F	1	0.4%	0 (0%)	1 (1%)	0 (0%)	0 (0%)
L18F	1	0.4%	0 (0%)	1 (1%)	NA ^b	0 (0%)
R21T	24	10.7%	0 (0%)	1 (1%)	0 (0%)	23 (22%)
T22I	1	0.4%	1 (25%)	0 (0%)	0 (0%)	0 (0%)
T29I	2	0.9%	2 (50%)	0 (0%)	0 (0%)	0 (0%)
T29A	1	0.4%	0 (0%)	0 (0%)	0 (0%)	1 (1%)
A67V	7	3.1%	0 (0%)	0 (0%)	0 (0%)	7 (7%)
T95I	11	4.9%	0 (0%)	0 (0%)	0 (0%)	11 (10%)
K97Q	1	0.4%	0 (0%)	0 (0%)	0 (0%)	1 (1%)
I128V	1	0.4%	0 (0%)	1 (1%)	0 (0%)	0 (0%)
K147N	3	1.3%	0 (0%)	3 (3%)	0 (0%)	0 (0%)
K150E	1	0.4%	0 (0%)	1 (1%)	0 (0%)	0 (0%)
M153I	1	0.4%	0 (0%)	1 (1%)	0 (0%)	0 (0%)
S221L	1	0.4%	0 (0%)	0 (0%)	0 (0%)	1 (1%)
A222V	64	28.4%	1 (25%)	0 (0%)	0 (0%)	63 (59%)
T250S	1	0.4%	0 (0%)	0 (0%)	0 (0%)	1 (1%)
T250I	1	0.4%	0 (0%)	0 (0%)	0 (0%)	1 (1%)
P251L	2	0.9%	0 (0%)	0 (0%)	0 (0%)	2 (2%)
A352S	1	0.4%	0 (0%)	1 (1%)	0 (0%)	0 (0%)
N439K	1	0.4%	1 (25%)	0 (0%)	0 (0%)	0 (0%)
K444N	1	0.4%	0 (0%)	1 (1%)	0 (0%)	0 (0%)
P479S	1	0.4%	0 (0%)	0 (0%)	0 (0%)	1 (1%)
A522S	1	0.4%	0 (0%)	0 (0%)	0 (0%)	1 (1%)
E583D	1	0.4%	0 (0%)	1 (1%)	0 (0%)	0 (0%)
S640F	1	0.4%	0 (0%)	1 (1%)	0 (0%)	0 (0%)
A653V	1	0.4%	0 (0%)	1 (1%)	0 (0%)	0 (0%)
A688V	1	0.4%	0 (0%)	1 (1%)	0 (0%)	0 (0%)
T719I	3	1.3%	0 (0%)	0 (0%)	0 (0%)	3 (3%)
K795R	1	0.4%	0 (0%)	1 (1%)	0 (0%)	0 (0%)
P812L	1	0.4%	0 (0%)	1 (1%)	0 (0%)	0 (0%)
D843N	1	0.4%	0 (0%)	1 (1%)	0 (0%)	0 (0%)
D936H	1	0.4%	0 (0%)	0 (0%)	0 (0%)	1 (1%)
V976F	1	0.4%	0 (0%)	0 (0%)	0 (0%)	1 (1%)
A1056V	1	0.4%	0 (0%)	1 (1%)	0 (0%)	0 (0%)
Q1071L	2	0.9%	2 (50%)	0 (0%)	0 (0%)	0 (0%)
G1085R	1	0.4%	0 (0%)	1 (1%)	0 (0%)	0 (0%)
I1115V	1	0.4%	0 (0%)	1 (1%)	0 (0%)	0 (0%)
S1147L	1	0.4%	0 (0%)	1 (1%)	0 (0%)	0 (0%)
T1160I	1	0.4%	0 (0%)	1 (1%)	0 (0%)	0 (0%)
G1219V	3	1.3%	0 (0%)	3 (3%)	0 (0%)	0 (0%)
V1228L	1	0.4%	0 (0%)	1 (1%)	0 (0%)	0 (0%)
I1232L	4	1.8%	0 (0%)	4 (4%)	0 (0%)	0 (0%)
M1237V	1	0.4%	0 (0%)	0 (0%)	0 (0%)	1 (1%)
V1264L	2	0.9%	0 (0%)	1 (1%)	0 (0%)	1 (1%)
L1265I	8	3.5%	0 (0%)	0 (0%)	0 (0%)	8 (8%)

246 ^aN=225, consisting of 4 non-VOC, 112 Alpha, 3 Gamma, and 106 Delta isolates. ^bNot applicable, this

247 mutation is a defining mutation of the Gamma variant.



248

249 **Figure 3.** Mapping of non-lineage defining mutations (red) on one monomer (blue) of the spike
250 protein. The most frequent mutations (>1%) are indicated by red arrows. The L5F, G1219V, I1232L,
251 and L1265I mutations are not shown in this model due to their proximity to the termini as the model
252 only comprises residues 14-1147. The spike is shown in its closed state as a trimer of 3 monomers
253 colored in blue, yellow, and green, respectively. NTD, N-terminal domain. RBD, receptor binding
254 domain.

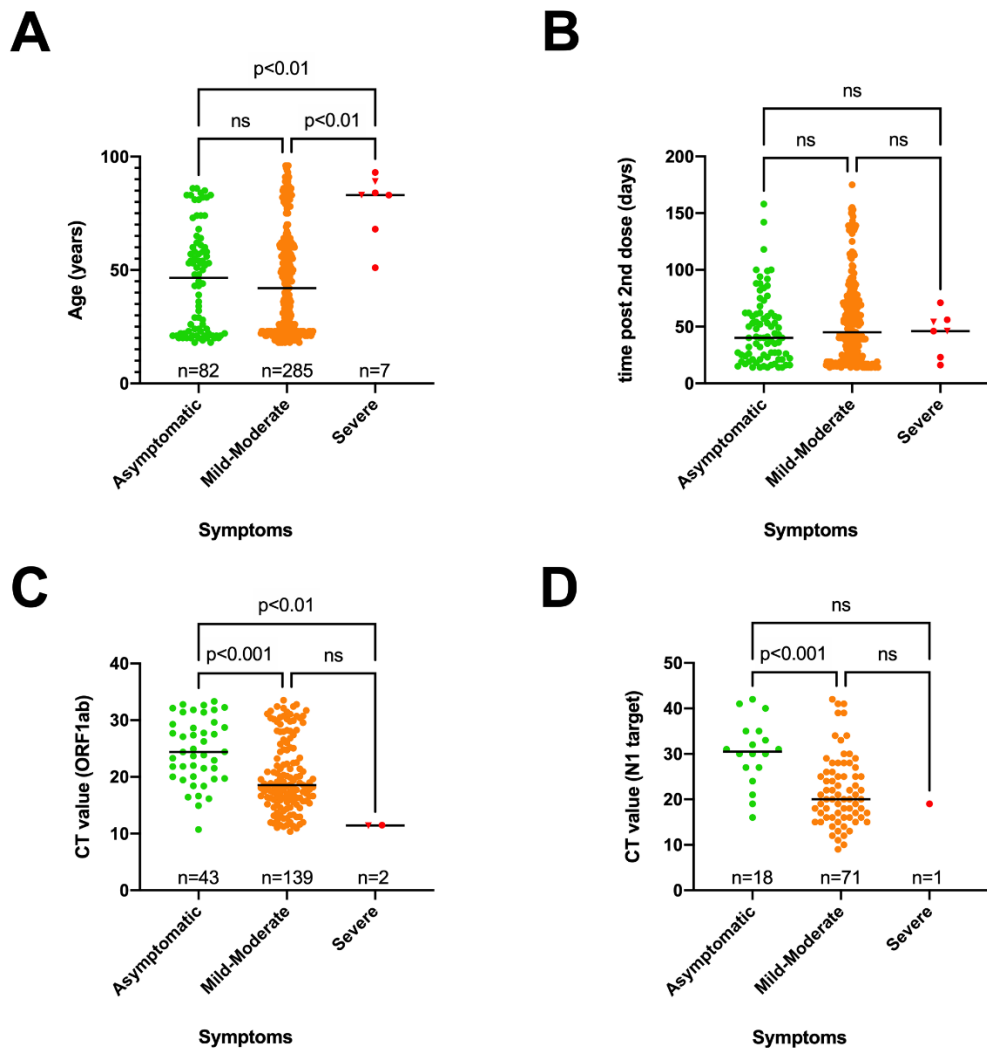
255

256 **People experiencing severe symptoms were significantly older than those who remained** 257 **asymptomatic or experienced mild to moderate symptoms**

258 A significant difference in median age was found between asymptomatic (46.5 years old) and severe
259 symptomatic cases (83 years old) on one hand, and mild-moderate symptomatic (42 years old) and
260 severe COVID-19 cases on the other hand (Figure 4A). Two out of seven severe SARS-CoV-2
261 infections had a fatal outcome. Nevertheless, the great majority of cases (75.4%) belonged to the
262 mild-moderate category. There was no association between SARS-CoV-2 genotype and disease
263 severity (Table S3).

264 When the time of the first positive test after receiving the 2nd dose was plotted against disease
265 severity for each case, no significant difference could be observed (Figure 4B).

266 However, a significant difference in median CT value was observed between the three different
267 groups of symptoms, as lower median CT values were observed in the severe and mild-moderate
268 categories compared to asymptomatic cases (Figure 4C&D).



269

270 **Figure 4. A.** Scatter plots showing the distribution of age vs symptoms (A), time of positive RT-PCR
 271 test after receiving the 2nd dose vs symptoms (B), CT value vs symptoms for the ORF1ab target (C) or
 272 N1 target (D) as determined using two independent workflows. A Kruskal-Wallis test was performed
 273 to compare the median age (A), median time of positive RT-PCR test after receiving the 2nd dose (B)
 274 and the median CT value (C-D) between the 3 categories of symptoms. When a statistically
 275 significant result was obtained, Dunn's multiple comparison test was performed *post hoc* to identify
 276 which groups significantly differed. ns, not significant. A fatal outcome was indicated by a reverse
 277 triangle symbol.

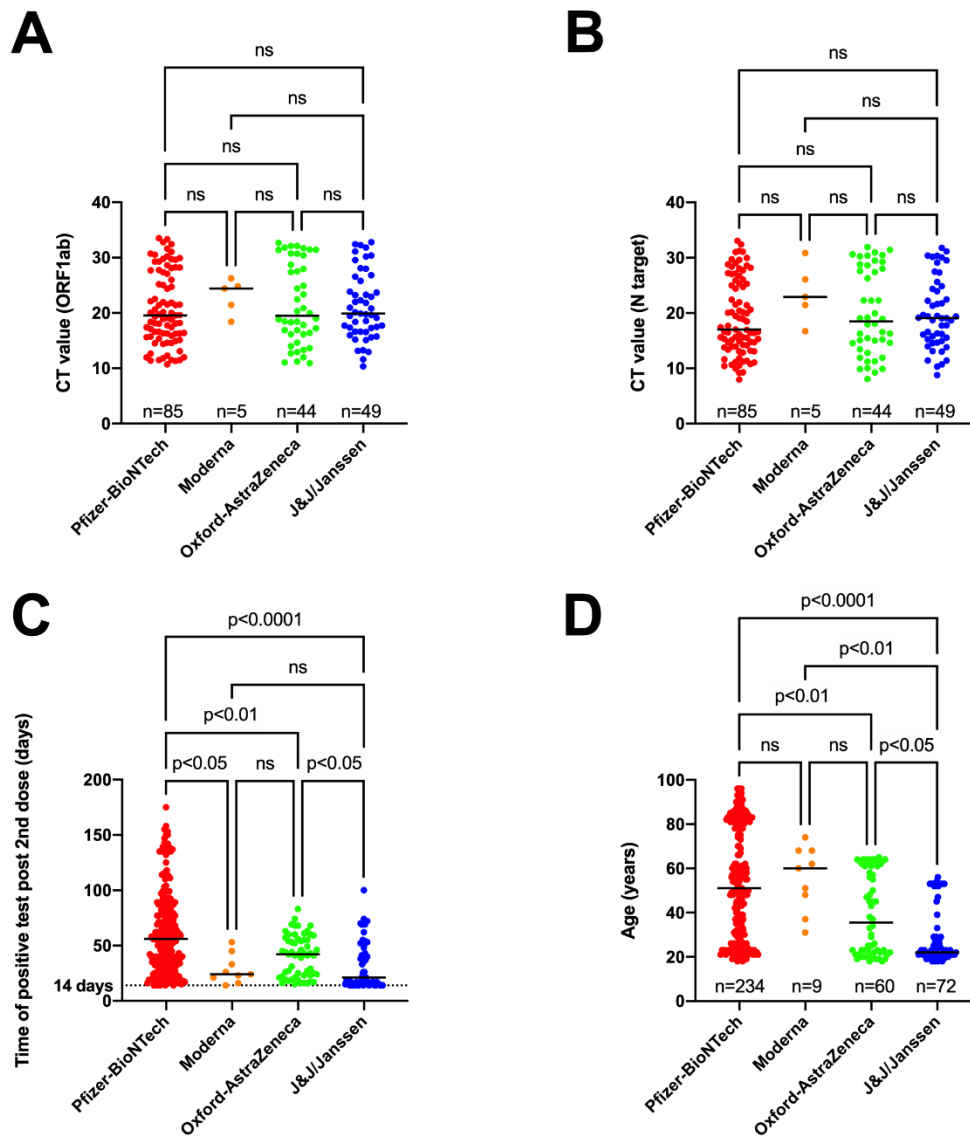
278

279 Relationship between vaccine type and viral load, time of positive test post vaccination and age

280 No significant difference in viral load could be observed when comparing the infections after Pfizer-
 281 BioNTech, Moderna, Oxford-AstraZeneca and J&J/Janssen vaccinations (Figure 5A&B).

282 However, there was a significant difference in median time of the first positive test after receiving
 283 the 2nd dose between the different vaccine types as people who received the Pfizer-BioNTech
 284 vaccine tested positive later after being fully vaccinated compared to the other vaccine types (Figure
 285 5C). In addition, people who received the J&J/Janssen vaccine in our study received a positive result
 286 sooner after being fully vaccinated compared to people receiving the Oxford-AstraZeneca vaccine.

287 Finally, individuals who received the Pfizer-BioNTech vaccine were significantly older (median age 51
 288 years old) than those who received the Oxford-AstraZeneca (median age 35.5 years old) or the
 289 J&J/Janssen vaccine (median age 22 years old) (Figure 5D).
 290 There was no association between vaccine type and disease severity (Table S4).



291
 292 **Figure 5. A.** Relationship between type of vaccine used and CT value obtained for ORF1ab (A), N
 293 target (B), time of positive SARS-CoV-2 test after receiving the 2nd dose (C) or age (D). A Kruskal-
 294 Wallis test was performed to compare median CT value for ORF1ab (A), N target (B), the median
 295 time of positive RT-PCR test after receiving the 2nd dose (C) and the median age (D) between the 4
 296 types of vaccines. When a statistically significant result was obtained, Dunn’s multiple comparison
 297 test was performed *post hoc* to identify which groups significantly differed. ns, not significant.

298
 299
 300
 301

302 Discussion

303 In this study, we studied breakthrough infections per variant and vaccine type in function of time in
304 the South Limburg region of the Netherlands. We determined that prior to emergence of the Delta
305 variant, breakthrough cases occurred at a continuously low frequency and the proportion of SARS-
306 CoV-2 variants causing breakthrough infections corresponded well with the distribution of those
307 variants in the region. However, both the number of positive cases and breakthrough infections
308 steeply increased starting from week 27, most likely as a consequence of relaxation of COVID-19
309 measures and subsequent higher virus transmission rates, in The Netherlands by the end of week 25.
310 Furthermore, the proportion of breakthrough cases versus total cases seemed increased. This rise
311 started from week 25, when the Delta variant became dominant in the region. However, whether
312 this increase in relative proportion of breakthrough infections is related to the rise of the Delta
313 variant is difficult to determine since the number of fully vaccinated individuals also quickly
314 accumulated during that period. Other studies have observed a similar impact of the Delta variant as
315 for example in the Delaware valley, the Delta variant showed three-fold enrichment in vaccine
316 breakthrough cases compared to genomic surveillance data through summer 2021³¹. Furthermore,
317 several studies have found that vaccine effectiveness for multiple vaccine types was significantly
318 reduced against the Delta vs Alpha variant^{24,32-35}. For instance, a large study assessing breakthrough
319 infections in frontline workers conducted by the CDC revealed that vaccine effectiveness dropped
320 from 91% before predominance of the Delta variant to 66% when this variant became
321 predominant³². A second study analyzing breakthrough infections in 780,225 US veterans found that
322 vaccine effectiveness dropped from 87.9% in February when the Delta variant was absent to 48.1%
323 in October when the Delta variant was predominant in the US³⁵.

324 In our study, we also noticed a disproportionate representation of administered vaccine types
325 among breakthrough cases, as the mRNA-based vaccines (0.14%) led to fewer breakthrough
326 infections, compared to the J&J/Janssen (0.46%) or Oxford-AstraZeneca vaccines (0.89%) relative to
327 the number of administered vaccines. Since the number of fully vaccinated people with Oxford-
328 AstraZeneca and J&J/Janssen only significantly started accumulating starting from week 21 and nearly
329 half of the breakthrough cases were recorded between week 25 and week 28, this applies in
330 particular to the Delta variant. A similar observation has been reported by another study in which it
331 was shown that vaccine effectiveness for the J&J/Janssen vaccine dropped from 86% in March to
332 13% in September, while the decline for the Moderna (89% in March to 58% in September) and
333 Pfizer-BioNTech (87% in March to 43% in August) was much more modest³⁵. Furthermore, the
334 Washington DC Health department also found a higher proportion of breakthrough infections
335 among people vaccinated with J&J/Janssen (2.20%) as compared to Pfizer-BioNTech (1.23%) or
336 Moderna (0.86%) relative to the number of complete vaccinations with the respective vaccine types
337 between January and October³⁶. Finally, a third study showed that the Oxford-AstraZeneca vaccine
338 was 60% effective against infection with the Delta variant compared to 79% effectiveness for the
339 Pfizer-BioNTech vaccine, despite both vaccine types being 13% less effective compared to infection
340 with the Alpha variant³⁴.

341 When comparing the distribution of SARS-CoV-2 variants retrieved from fully vaccinated individuals
342 compared to the frequency of variants that were circulating in the entire population in the region of
343 South Limburg, we found that breakthrough infections were caused by SARS-CoV-2 genotypes that
344 were present in similar proportions during genomic regional surveillance. Before the Delta variant
345 emerged, the great majority of breakthrough infections were caused by the Alpha variant with the
346 exception of an occasional Gamma or a non-VOC infection. This is in line with data from the CDC in
347 which 555 SARS-CoV-2 isolates from a total of 10,262 SARS-CoV-2 vaccine breakthrough infections

348 were sequenced and the proportion of VOCs identified in breakthrough infections (64%)
349 corresponded with their prevalence in the national genomic surveillance (70%) during the period
350 between January 1 and April 30, 2021³².

351 When the Delta variant emerged in the South Limburg region in week 23, the number of positive
352 cases was low and this variant quickly became dominant in the following weeks when there was a
353 surge in the number of positive cases, making it difficult to estimate what proportion of
354 breakthrough infections are attributable to the Delta variant as compared to regionally surveillance
355 data. Nevertheless, the proportion of breakthrough infections caused by the Delta variant seems to
356 be slightly higher than its share in genomic surveillance (100% vs 64% in week 26, 95% vs 84% in
357 week 27, and 100% vs 95% in week 28), although still being in line with our observations for the
358 Alpha variant and other VOCs.

359 Marques and colleagues³¹ found a much more pronounced enrichment of the Delta variant (3-fold)
360 in SARS-CoV-2 breakthrough infections compared to its frequency in surveillance data in the
361 Delaware valley. The fact that the time window from emergence to predominance of the Delta
362 variant was wider (2 months vs 1 month) in the Delaware study might explain this discrepancy.

363 When looking at the frequency of non-lineage defining mutations in the 225 isolates causing
364 breakthrough infections in this study, it was found that the great majority of mutations were
365 concentrated in the N-terminal and C-terminal domains of the spike protein. Amongst the 3 most
366 frequent non-lineage defining mutations were the T95I (4.9%), R21T (10.4%), and A222V (28.4%)
367 amino acid substitutions in the NTD, of which the latter two were detected in different variant
368 backgrounds. It is known that mutations in the antigenic supersite of the N-terminal domain (NTD)
369 of the spike protein (residues 14-20, 140-158, and 245-264) can lead to reduced neutralization by a
370 number of monoclonal antibodies¹⁶ For instance, mutation of residues 156-158 have been described
371 in B.1.1.523³⁷, being a variant under monitoring (VUM) and the Delta variant²⁵. Although the A222V
372 and T95I mutations are in close proximity to the antigenic supersite residues, they have no effect on
373 neutralization¹⁶. Nevertheless, the effect of these mutation in the Delta background on
374 neutralization has not been determined yet and the T95I mutations is found in many VUM/VOI,
375 including the B.1.1.318, Kappa, Iota, and Mu variants^{5,38} and as well in an emerging sublineage of the
376 Delta variant³⁹. Furthermore, the A222V mutation has emerged independently in the B.1.177 and
377 two Delta sublineages, including the AY4.2 (“Delta Plus”) lineage that is rapidly increasing in
378 frequency at the moment in the UK³⁹. In addition, all A222V mutations in this study belonged to the
379 AY.9 sublineage of the Delta variant that has also been associated with breakthrough infections in
380 India⁴⁰.

381 The finding that the majority of adaptive mutations are concentrated in the NTD corresponds well
382 with recent data published by Zhang *et al*, showing that different variants tolerate multiple
383 mutations causing structural rearrangements in their NTD that lead to immune evasion, while the
384 overall structure of the RBD is strictly preserved, with mutations only being limited to a number of
385 sites⁴¹.

386

387 Previously, we have shown that infections caused by the Delta variant are associated with higher
388 viral loads compared to the Alpha variant in the total population⁴². Here, we found that this is also
389 the case for a fully vaccinated population as a median difference of 5 CT-values was observed
390 between infections caused by the Delta vs Alpha variant. A similar difference in load between both
391 variants was observed in the study of Blanquart *et al*, in which the CT values of 77 non-Delta (mostly

392 Alpha) breakthrough infections were compared to 866 breakthrough cases infected with the Delta
393 variant⁴³. A large study including 16,000 infected individuals during the Delta-dominant period in
394 Israel found that fully vaccinated individuals harbored lower viral loads than unvaccinated
395 individuals, but that the effect of vaccination on viral loads started declining after 2 months and
396 completely vanished 6 months post vaccination⁴⁴. However, the difference was restored after a
397 booster dose of the Pfizer-BioNTech vaccine. This indicates that viral loads found in vaccinated and
398 unvaccinated individuals might be comparable in a relatively short amount of time post vaccination.

399 When looking at the distribution of disease symptoms in our study population, a significant
400 difference in median age was observed between asymptomatic and severe (46.5 vs 83 years) as well
401 as mild-moderate and severe cases (42 vs 83 years). Similar findings were reported in Belgium⁴⁵ and
402 the USA⁴⁶, where the median age of hospitalized patients was 82 and 80.5 years, respectively.

403 A number of hypotheses could explain the breakthrough infections causing mortality in the oldest
404 age group. First of all, underlying conditions could have increased the vulnerability to SARS-CoV-2
405 infections in these individuals. Secondly, the humoral and cellular immune response triggered by the
406 vaccines might not have been adequate to protect from symptomatic SARS-CoV-2 infection.
407 Recently, it has been shown that there was a significant correlation between increased age and
408 reduced antibody neutralization when sera from individuals vaccinated with the BNT162b2 vaccine
409 of Pfizer were incubated with either wild-type, D614G, B.1.1.7, B.1.351 or B.1.617.2 SARS-CoV-2
410 virus²⁰. Furthermore, a second study reported that a weaker T cell response was observed in older
411 individuals following vaccination⁴⁷. It has been proposed that age-related thymic involution causes
412 immunosenescence due to reduced T cell receptor (TCR) diversity as well as increased chronic
413 inflammation in the elderly⁴⁸. Reduced TCR diversity could interfere with the ability to respond to
414 novel antigens, while increased chronic inflammation could induce a cytokine storm⁴⁸.

415

416 No significant difference in time of positive test after the 2nd dose could be observed between
417 asymptomatic patients, patients with mild-moderate or severe symptoms in our study. However, it
418 has been described that vaccine efficacy can drop over time as much as 22% for Pfizer-BioNTech and
419 7% for Oxford-AstraZeneca when comparing 14 days to 90 days post receiving the 2nd dose³³.

420 Interestingly, we found that symptomatic patients harbored significantly higher viral loads compared
421 to asymptomatic people amongst breakthrough cases. A similar observation has been done by
422 Shamier and colleagues in The Netherlands⁴⁹ and by Blancquaert *et al* in France⁴³.

423

424 In agreement with the study of Shamier *et al*⁴⁹, no significant difference in viral load could be found
425 when comparing the different types of vaccines that had been administered, despite the median CT-
426 value for the few (n=5) infections in Moderna recipients being 5 units higher. A recent study has
427 shown that higher neutralizing antibodies within a week before SARS-CoV-2 infection are associated
428 with lower viral loads⁵⁰. It would be interesting to see if the Moderna vaccine is associated with
429 lower viral loads compared to other vaccine types in a larger study of breakthrough infections, as
430 higher antibody titers have been observed in people receiving 2 doses of Moderna compared to 2
431 doses of Pfizer-BioNTech⁵¹, most likely due to the >3-fold higher spike mRNA content.

432 The significant increase in age and time of the first positive test after receiving the 2nd dose observed
433 for the Pfizer-BioNTech compared to the Oxford-AstraZeneca and J&J/Janssen vaccines can be
434 explained by the fact that during the first 21 weeks mainly Pfizer-BioNTech was used to inject mainly

435 the elderly and healthcare workers, whereas the J&J/Janssen vaccine was administered to young
436 adults who received their second dose right before relaxation of COVID-19 measures when there
437 was a spike in positive cases.

438 Strengths of this study were the ability to monitor and compare breakthrough infections against the
439 regional genomic surveillance over an extensive period, even before the first vaccines were
440 administered as well as the regional follow-up of cases, allowing monitoring of the amount of
441 breakthrough infections at a high resolution. A high proportion (60%) of all breakthrough cases were
442 successfully sequenced further enhancing the resolution. Additionally, analysis were conducted on
443 cases one day after vaccination giving an overall picture of susceptibility directly post vaccination.

444 Limitations were the fact that the number of reported breakthrough infections are an
445 underestimation of the effective number, due to asymptomatic or mild cases or because of severe
446 cases in local hospitals that were not reported to the regional public health service. Furthermore,
447 asymptomatic cases were only followed up for a limited amount of time, possibly leading to the
448 underestimation of symptomatic cases. Thirdly, only samples from cases with sufficiently high viral
449 loads could be sequenced (<CT 32), leading to a limited dataset. Additionally, not all samples were
450 available so some bias could have been introduced if unavailable samples were different than
451 available samples. Lastly, the lack of immunological data, which could help to understand how
452 breakthrough infections occur and why certain individuals experience severe symptoms.

453 In summary, this study has investigated the distribution of breakthrough infections per vaccine type
454 and variant over time in the South Limburg region of The Netherlands. It was found that
455 breakthrough infections were more frequently observed in people who received Oxford-AstraZeneca
456 or J&J/Janssen in comparison with recipients of the mRNA-based vaccines. Furthermore, the
457 predominance of the Delta variant coincided with a rapid increase in breakthrough infections and
458 severe cases were only observed in older individuals. Given that reduced vaccine effectiveness for
459 the Delta variant has been reported by multiple studies, as well as the fact that the Delta variant is
460 associated with increased viral loads in both vaccinated and unvaccinated populations might suggest
461 that a booster shot for certain vaccine types and populations at risk might be helpful in precluding
462 future COVID-19 waves.

463

464 **Data availability**

465 All sequences have been uploaded to GISAID. All GISAID accession ID numbers can be found in Table
466 S2.

467 **Competing interests**

468 None to report.

469 **Acknowledgements**

470 We would like to thank Edou Heddema from Zuyderland MC and Boris Vlaemynck from Synlab
471 Belgium for providing samples and data.

472

473

474

475 **Supplementary material**

476 **Table S1.** Oligonucleotides used in this study.

Target	Primer/Probe	5' mod	Seq 5' – 3'	3' mod	Tm	Notes
SARS-CoV-2 E gene ⁵²	SARS-CoV-2-E_F	FAM	ACAGGTACGTTAATAGTTAATAGCGT	BHQ1	62.6	Sarbecovirus/ SARS-CoV broad
	SARS-CoV-2-E_R		ATATTGCAGCAGTACGCACACA		64.8	
	SARS-CoV-2-E_P		ACACTAGCCATCCTTACTGCGCTTCG		69.3	
SARS-CoV-2 N1 gene ⁵³	SARS-CoV-2-N1_F	ABY*	GACCCAAAATCAGCGAAAT	QSY	61.1	SARS-CoV-2 specific
	SARS-CoV-2-N1_R		TCTGGTTACTGCCAGTTGAATCTG		64.5	
	SARS-CoV-2-N1_P		ACCCCGCATTACGTTTGGTGGACC		70.3	
mCMV-ie	mCMV-ie_F	Cy5	CAACATTGACCACGCACTAGATG	BHQ3	63.6	MUMC RNA internal control
	mCMV-ie_R		TTAAACTCCCCAGGCAATGAA		62.2	
	mCMV-ie_P		TCTTGCCCATGCGGCACG		69.7	

477

478 **Table S2.** Cohort metadata.

479 **Table S3.** Contingency table of genotype vs symptoms

N (Percentage of grand total)	Asymptomatic	Mild-Moderate	p-value*
Alpha	22 (10.19%)	88 (40.74%)	0.28
Delta	15 (6.94%)	91 (42.13%)	

480 *p-value was calculated using Fisher's exact test.

481

482 **Table S4.** Contingency table of vaccine type vs symptoms

N (Percentage of grand total)	Asymptomatic	Mild-Moderate	p-value*
Pfizer-BioNTech	53 (14.25%)	178 (47.85%)	0.96
Moderna	2 (0.54%)	7 (1.88%)	
Oxford-AstraZeneca	12 (3.23%)	48 (12.90%)	
J&J/Janssen	15 (4.03%)	57 (15.32%)	

483 *p-value was calculated using a Chi-square test.

484

485

486

487

488

489

490

491

492

493

494 References

- 495 1 Li, Q. *et al.* Early Transmission Dynamics in Wuhan, China, of Novel Coronavirus-Infected
496 Pneumonia. *N Engl J Med* **382**, 1199-1207, doi:10.1056/NEJMoa2001316 (2020).
- 497 2 WHO. *Coronavirus (COVID-19) Dashboard*, < <https://covid19.who.int/>> (2021).
- 498 3 Duchene, S. *et al.* Temporal signal and the phylodynamic threshold of SARS-CoV-2. *Virus Evol*
499 **6**, veaa061, doi:10.1093/ve/veaa061 (2020).
- 500 4 Minskaia, E. *et al.* Discovery of an RNA virus 3'->5' exoribonuclease that is critically involved
501 in coronavirus RNA synthesis. *Proc Natl Acad Sci U S A* **103**, 5108-5113,
502 doi:10.1073/pnas.0508200103 (2006).
- 503 5 Peacock, T. P., Penrice-Randal, R., Hiscox, J. A. & Barclay, W. S. SARS-CoV-2 one year on:
504 evidence for ongoing viral adaptation. *J Gen Virol* **102**, doi:10.1099/jgv.0.001584 (2021).
- 505 6 Harvey, W. T. *et al.* SARS-CoV-2 variants, spike mutations and immune escape. *Nat Rev*
506 *Microbiol*, doi:10.1038/s41579-021-00573-0 (2021).
- 507 7 Korber, B. *et al.* Tracking Changes in SARS-CoV-2 Spike: Evidence that D614G Increases
508 Infectivity of the COVID-19 Virus. *Cell* **182**, 812-827 e819, doi:10.1016/j.cell.2020.06.043
509 (2020).
- 510 8 Plante, J. A. *et al.* Spike mutation D614G alters SARS-CoV-2 fitness. *Nature* **592**, 116-121,
511 doi:10.1038/s41586-020-2895-3 (2021).
- 512 9 Zhang, L. *et al.* SARS-CoV-2 spike-protein D614G mutation increases virion spike density and
513 infectivity. *Nat Commun* **11**, 6013, doi:10.1038/s41467-020-19808-4 (2020).
- 514 10 Ramanathan, M., Ferguson, I. D., Miao, W. & Khavari, P. A. SARS-CoV-2 B.1.1.7 and B.1.351
515 spike variants bind human ACE2 with increased affinity. *Lancet Infect Dis*,
516 doi:10.1016/S1473-3099(21)00262-0 (2021).
- 517 11 Hoffmann, M. *et al.* SARS-CoV-2 variants B.1.351 and P.1 escape from neutralizing
518 antibodies. *Cell* **184**, 2384-2393 e2312, doi:10.1016/j.cell.2021.03.036 (2021).
- 519 12 Davies, N. G. *et al.* Estimated transmissibility and impact of SARS-CoV-2 lineage B.1.1.7 in
520 England. *Science* **372**, doi:10.1126/science.abg3055 (2021).
- 521 13 Davies, N. G. *et al.* Increased mortality in community-tested cases of SARS-CoV-2 lineage
522 B.1.1.7. *Nature* **593**, 270-274, doi:10.1038/s41586-021-03426-1 (2021).
- 523 14 Frampton, D. *et al.* Genomic characteristics and clinical effect of the emergent SARS-CoV-2
524 B.1.1.7 lineage in London, UK: a whole-genome sequencing and hospital-based cohort study.
525 *Lancet Infect Dis*, doi:10.1016/S1473-3099(21)00170-5 (2021).
- 526 15 Kemp, S. A. *et al.* Recurrent emergence and transmission of a SARS-CoV-2 spike deletion
527 H69/V70. *bioRxiv*, 2020.2012.2014.422555, doi:10.1101/2020.12.14.422555 (2021).
- 528 16 McCallum, M. *et al.* N-terminal domain antigenic mapping reveals a site of vulnerability for
529 SARS-CoV-2. *Cell* **184**, 2332-2347 e2316, doi:10.1016/j.cell.2021.03.028 (2021).
- 530 17 Planas, D. *et al.* Sensitivity of infectious SARS-CoV-2 B.1.1.7 and B.1.351 variants to
531 neutralizing antibodies. *Nat Med* **27**, 917-924, doi:10.1038/s41591-021-01318-5 (2021).
- 532 18 Chen, R. E. *et al.* Resistance of SARS-CoV-2 variants to neutralization by monoclonal and
533 serum-derived polyclonal antibodies. *Nat Med* **27**, 717-726, doi:10.1038/s41591-021-01294-
534 w (2021).
- 535 19 Geers, D. *et al.* SARS-CoV-2 variants of concern partially escape humoral but not T-cell
536 responses in COVID-19 convalescent donors and vaccinees. *Science Immunology* **6**, eabj1750,
537 doi:10.1126/sciimmunol.abj1750 (2021).
- 538 20 Wall, E. C. *et al.* Neutralising antibody activity against SARS-CoV-2 VOCs B.1.617.2 and
539 B.1.351 by BNT162b2 vaccination. *The Lancet*, doi:10.1016/S0140-6736(21)01290-3 (2021).
- 540 21 Wang, Z. *et al.* mRNA vaccine-elicited antibodies to SARS-CoV-2 and circulating variants.
541 *Nature* **592**, 616-622, doi:10.1038/s41586-021-03324-6 (2021).
- 542 22 Weisblum, Y. *et al.* Escape from neutralizing antibodies by SARS-CoV-2 spike protein
543 variants. *Elife* **9**, doi:10.7554/eLife.61312 (2020).

- 544 23 Zhou, D. *et al.* Evidence of escape of SARS-CoV-2 variant B.1.351 from natural and vaccine-
545 induced sera. *Cell* **184**, 2348-2361 e2346, doi:10.1016/j.cell.2021.02.037 (2021).
- 546 24 Lopez Bernal, J. *et al.* Effectiveness of Covid-19 Vaccines against the B.1.617.2 (Delta)
547 Variant. *N Engl J Med* **385**, 585-594, doi:10.1056/NEJMoa2108891 (2021).
- 548 25 Planas, D. *et al.* Reduced sensitivity of SARS-CoV-2 variant Delta to antibody neutralization.
549 *Nature* **596**, 276-280, doi:10.1038/s41586-021-03777-9 (2021).
- 550 26 Liu, C. *et al.* Reduced neutralization of SARS-CoV-2 B.1.617 by vaccine and convalescent
551 serum. *Cell* **184**, 4220-4236 e4213, doi:10.1016/j.cell.2021.06.020 (2021).
- 552 27 Oude Munnink, B. B. *et al.* Rapid SARS-CoV-2 whole-genome sequencing and analysis for
553 informed public health decision-making in the Netherlands. *Nat Med* **26**, 1405-1410,
554 doi:10.1038/s41591-020-0997-y (2020).
- 555 28 Xu, C. *et al.* Conformational dynamics of SARS-CoV-2 trimeric spike glycoprotein in complex
556 with receptor ACE2 revealed by cryo-EM. *Sci Adv* **7**, doi:10.1126/sciadv.abe5575 (2021).
- 557 29 Pettersen, E. F. *et al.* UCSF Chimera--a visualization system for exploratory research and
558 analysis. *J Comput Chem* **25**, 1605-1612, doi:10.1002/jcc.20084 (2004).
- 559 30 Hodcroft, E. B. *et al.* Spread of a SARS-CoV-2 variant through Europe in the summer of 2020.
560 *Nature*, doi:10.1038/s41586-021-03677-y (2021).
- 561 31 Marques, A. D. *et al.* SARS-CoV-2 variants associated with vaccine breakthrough in the
562 Delaware Valley through summer 2021. *medRxiv*, 2021.2010.2018.21264623,
563 doi:10.1101/2021.10.18.21264623 (2021).
- 564 32 Fowlkes, A. *et al.* COVID-19 Vaccine Breakthrough Infections Reported to CDC - United
565 States, January 1-April 30, 2021. *MMWR Morb Mortal Wkly Rep* **70**, 792-793,
566 doi:10.15585/mmwr.mm7021e3 (2021).
- 567 33 Pouwels, K. B. *et al.* Effect of Delta variant on viral burden and vaccine effectiveness against
568 new SARS-CoV-2 infections in the UK. *Nat Med*, doi:10.1038/s41591-021-01548-7 (2021).
- 569 34 Sheikh, A. *et al.* SARS-CoV-2 Delta VOC in Scotland: demographics, risk of hospital admission,
570 and vaccine effectiveness. *Lancet* **397**, 2461-2462, doi:10.1016/S0140-6736(21)01358-1
571 (2021).
- 572 35 Cohn, B. A., Cirillo, P. M., Murphy, C. C., Krigbaum, N. Y. & Wallace, A. W. SARS-CoV-2
573 vaccine protection and deaths among US veterans during 2021. *Science*, eabm0620,
574 doi:10.1126/science.abm0620 (2021).
- 575 36 Washington DC Health Department. *DC COVID-19 vaccination data*,
576 <coronavirus.dc.gov/data/vaccination> (2021).
- 577 37 van der Veer, B. M. J. W., Dingemans, J., van Alphen, L. B., Hoebe, C. J. P. A. & Savelkoul, P.
578 H. M. A novel B.1.1.523 SARS-CoV-2 variant that combines many spike mutations linked to
579 immune evasion with current variants of concern. *bioRxiv*, 2021.2009.2016.460616,
580 doi:10.1101/2021.09.16.460616 (2021).
- 581 38 Uriu, K. *et al.* Ineffective neutralization of the SARS-CoV-2 Mu variant by convalescent and
582 vaccine sera. *bioRxiv*, 2021.2009.2006.459005, doi:10.1101/2021.09.06.459005 (2021).
- 583 39 de Hoffer, A. *et al.* Variant-driven multi-wave pattern of COVID-19 via a Machine Learning
584 analysis of spike protein mutations. *medRxiv*, 2021.2007.2022.21260952,
585 doi:10.1101/2021.07.22.21260952 (2021).
- 586 40 Gupta, N. *et al.* Clinical Characterization and Genomic Analysis of Samples from COVID-19
587 Breakthrough Infections during the Second Wave among the Various States of India. *Viruses*
588 **13**, doi:10.3390/v13091782 (2021).
- 589 41 Zhang, J. *et al.* Membrane fusion and immune evasion by the spike protein of SARS-CoV-2
590 Delta variant. *Science*, eab19463, doi:10.1126/science.ab19463 (2021).
- 591 42 von Wintersdorff, C. *et al.* Infections caused by the Delta variant (B.1.617.2) of SARS-CoV-2
592 are associated with increased viral loads compared to infections with the Alpha variant
593 (B.1.1.7) or non-Variants of Concern. *Research Square*, doi:https://doi.org/10.21203/rs.3.rs-
594 777577/v1 (2021).

- 595 43 Blanquart, F. *et al.* Characterisation of vaccine breakthrough infections of SARS-CoV-2 Delta
596 and Alpha variants and within-host viral load dynamics in the community, France, June to
597 July 2021. *Euro Surveill* **26**, doi:10.2807/1560-7917.ES.2021.26.37.2100824 (2021).
- 598 44 Levine-Tiefenbrun, M. *et al.* Viral loads of Delta-variant SARS-CoV-2 breakthrough infections
599 after vaccination and booster with BNT162b2. *Nat Med*, doi:10.1038/s41591-021-01575-4
600 (2021).
- 601 45 Stouten, V. *et al.* Occurrence and Patient Characteristics of COVID-19 Breakthrough
602 Infections. Report No. D/2021/14.440/61, (Sciensano, Brussels, Belgium, 2021).
- 603 46 Juthani, P. V. *et al.* Hospitalisation among vaccine breakthrough COVID-19 infections. *Lancet*
604 *Infect Dis*, doi:10.1016/S1473-3099(21)00558-2 (2021).
- 605 47 Gallagher, K. M. E. *et al.* SARS -CoV-2 T-cell immunity to variants of concern following
606 vaccination. *bioRxiv*, doi:10.1101/2021.05.03.442455 (2021).
- 607 48 Wang, W., Thomas, R., Oh, J. & Su, D. M. Thymic Aging May Be Associated with COVID-19
608 Pathophysiology in the Elderly. *Cells* **10**, doi:10.3390/cells10030628 (2021).
- 609 49 Shamier, M. C. *et al.* Virological characteristics of SARS-CoV-2 vaccine breakthrough
610 infections in health care workers. *medRxiv*, 2021.2008.2020.21262158,
611 doi:10.1101/2021.08.20.21262158 (2021).
- 612 50 Bergwerk, M. *et al.* Covid-19 Breakthrough Infections in Vaccinated Health Care Workers. *N*
613 *Engl J Med* **385**, 1474-1484, doi:10.1056/NEJMoa2109072 (2021).
- 614 51 Steensels, D., Pierlet, N., Penders, J., Mesotten, D. & Heylen, L. Comparison of SARS-CoV-2
615 Antibody Response Following Vaccination With BNT162b2 and mRNA-1273. *JAMA* **326**,
616 1533-1535, doi:10.1001/jama.2021.15125 (2021).
- 617 52 Corman, V. M. *et al.* Detection of 2019 novel coronavirus (2019-nCoV) by real-time RT-PCR.
618 *Euro Surveill* **25**, doi:10.2807/1560-7917.ES.2020.25.3.2000045 (2020).
- 619 53 Lu, X. *et al.* US CDC Real-Time Reverse Transcription PCR Panel for Detection of Severe Acute
620 Respiratory Syndrome Coronavirus 2. *Emerg Infect Dis* **26**, doi:10.3201/eid2608.201246
621 (2020).
- 622