

Supplementary material to:

A comparison of health care use after severe COVID-19, respiratory syncytial virus, and influenza in children, Larsen et al. 2021

Table of contents

Figure S1: Description of registries from within Beredt C19 used to define study population and outcome variables.....	1
Figure S2: Flowchart of study population.....	2
Table S1: Selected International Classification of Diseases (ICD-10) codes and diagnosis categories..	2
Table S2: Descriptive statistics	2
Table S3: Crude percentages of health care use	3
Table S4: All-cause outpatient care use	3
Table S5: All-cause inpatient care use	3
Table S6: Crude percentages of outpatient and inpatient specialist care use	3

Figure S1: Description of registries from within Beredt C19 used to define study population and outcome variables.

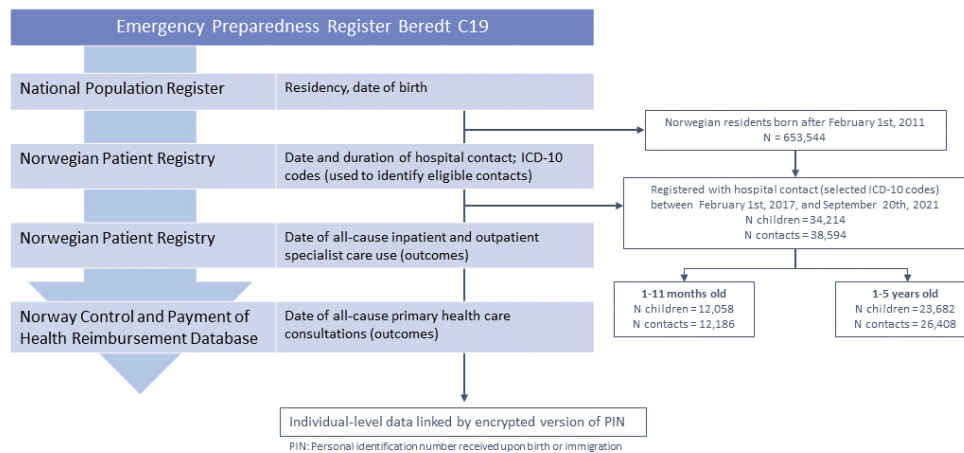


Figure S2: Flowchart of study population.

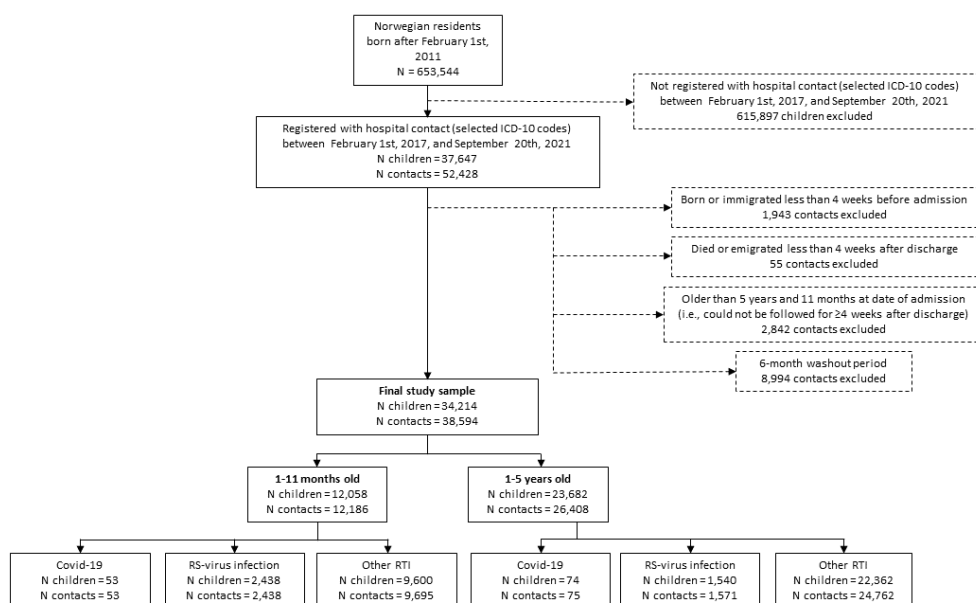


Table S1: Selected International Classification of Diseases (ICD-10) codes and diagnosis categories.

Category	ICD-10 codes
COVID-19	U07.1 U07.2
RSV infection	J12.1 J20.5 J21.0
Other RTI	J00 J02.0 J02.8 J02.9 J03.0 J03.8 J03.9 J04.0 J04.1 J04.2 J05.0 J05.1 J06.0 J06.8 J06.9 J12.0 J12.2 J12.3 J12.8 J12.9 J13 J14 J15.0 J15.1 J15.2 J15.3 J15.4 J15.5 J15.6 J15.7 J15.8 J15.9 J16.0 J16.8 J17.0 J17.1 J17.2 J17.3 J17.8 J18.0 J18.1 J18.2 J18.8 J18.9 J22 J20.0 J20.1 J20.2 J20.3 J20.4 J20.6 J20.7 J20.8 J20.9 J09 J10.0 J10.1 J10.8 J11.0 J11.1 J11.8

Table S2: Descriptive statistics.

	1-12 months			1-5 years		
	COVID-19	RSV	Other RTI	COVID-19	RSV	Other RTI
Children, N			34,214			
Children, N		12,058			23,682	
Children, N	53	2,438	9,600	74	1,540	22,362
Contacts, N	53	2,438	9,695	75	1,571	24,762
Person-weeks, N	1,141	53,346	220,617	1,742	37,824	607,009
Females, N (%)	23 (43.4)	1,072 (44.0)	3,975 (41.0)	33 (44.0)	670 (42.6)	10,313 (41.6)
Age, median [25%-75%]	2 [2-4]	2 [1-5]	3 [2-7]	2.4 [1.55-3.5]	1.6 [1.2-2.3]	2.1 [1.4-3.2]

Note: Age presented as median and interquartile range (IQR) age in months/years at admission. The calculation of age and sex percentages are done using the number unique hospital contacts in the denominator. Due to the 6-month washout period, some children appear in >1 of the age and/or diagnosis groups.

Table S3: Crude percentages of health care use.

Week	1-12 months						1-5 years					
	COVID-19		RSV		Other RTI		COVID-19		RSV		Other RTI	
	P	S	P	S	P	S	P	S	P	S	P	S
Pre	11.76	9.68	12.21	9.26	10.83	10.98	6.00	6.67	12.95	5.64	10.33	5.82
1-4	16.04	10.85	9.44	8.25	10.39	10.3	11.67	12.33	10.26	9.55	10.85	9.45
5-8	8.38	5.24	7.52	4.69	8.65	7.16	6.02	7.23	8.29	7.57	7.74	7.41
9-12	6.96	5.70	7.62	3.45	8.26	6.10	3.21	5.50	7.42	6.76	7.19	6.97

Note: Weekly percentages of children utilizing primary (P) and specialist (S) health care in the 12-week pre-admission period (pre) and 1-4-, 5-8-, and 9-12-week post-discharge period.

Table S4: All-cause outpatient care use

	Week 1-4		Week 5-8		Week 9-12	
	β	95 % CI	β	95 % CI	β	95 % CI
1-12 months						
RSV infection	0.025	-0.023-0.072	-0.008	-0.076-0.06	0.012	-0.062-0.086
Other RTI	0.017	-0.025-0.06	-0.015	-0.073-0.044	0.002	-0.062-0.065
1-5 years						
RSV infection	0	-0.035-0.035	-0.019	-0.061-0.023	-0.018	-0.062-0.026
Other RTI	0.006	-0.028-0.04	-0.021	-0.064-0.022	-0.028	-0.066-0.011

Table S5: All-cause inpatient care use

	Week 1-4		Week 5-8		Week 9-12	
	β	95 % CI	β	95 % CI	β	95 % CI
1-12 months						
RSV infection	0.044	0.012-0.076	0.037	0.004-0.069	0.038	0.001-0.076
Other RTI	0.021	-0.005-0.048	0.019	-0.007-0.044	0.03	-0.002-0.062
1-5 years						
RSV infection	0.002	-0.029-0.033	-0.001	-0.033-0.031	-0.006	-0.035-0.023
Other RTI	0.002	-0.028-0.033	0.001	-0.033-0.035	-0.007	-0.033-0.02

Table S6: Crude percentages of outpatient and inpatient specialist care use

Week	1-12 months						1-5 years					
	COVID-19		RSV		Other RTI		COVID-19		RSV		Other RTI	
	O	I	O	I	O	I	O	I	O	I	O	I
Pre	6.83	4.36	5.51	4.62	6.69	5.50	5.89	1.67	4.67	1.17	4.85	1.34
1-4	9.43	4.25	6.51	2.03	7.85	3.36	9.67	3.33	7.77	2.31	7.48	2.62
5-8	4.19	2.62	3.66	1.16	5.62	2.09	5.62	2.41	5.86	2.03	6.10	1.83
9-12	5.06	3.16	2.66	0.88	4.87	1.62	4.13	1.38	5.44	1.56	5.82	1.59

Note: Weekly percentages of children utilizing outpatient (O) and inpatient (I) specialist health care in the 12-week pre-admission period (pre) and 1-4-, 5-8-, and 9-12-week post-discharge period.