

## Supplemental Material

### Meta-topologies define distinct anatomical classes of brain tumors linked to histology and survival

Julius M. Kernbach<sup>1,2,3\*</sup>, Daniel Delev<sup>1,2,3\*</sup>, Georg Neuloh<sup>2,3</sup>, Hans Clusmann<sup>2,3</sup>,  
Danilo Bzdok<sup>4,5</sup>, Simon B. Eickhoff<sup>6,7</sup>, Victor E. Staartjes<sup>8</sup>, Flavio Vasella<sup>8</sup>,  
Michael Weller<sup>9</sup>, Luca Regli<sup>8</sup>, Carlo Serra<sup>8</sup>, Niklaus Krayenbühl<sup>8,10</sup>, Kevin Akeret<sup>8</sup>

<sup>1</sup> Neurosurgical Artificial Intelligence Laboratory Aachen (NAILA), RWTH Aachen University Hospital, Aachen, Germany

<sup>2</sup> Department of Neurosurgery, Faculty of Medicine, RWTH Aachen University, Aachen, Germany

<sup>3</sup> Center for Integrated Oncology, Universities Aachen, Bonn, Cologne, Düsseldorf (CIO ABCD), Germany.

<sup>4</sup> Department of Biomedical Engineering, McConnell Brain Imaging Centre, Montreal Neurological Institute, Faculty of Medicine, School of Computer Science, McGill University, Montreal, Canada

<sup>5</sup> Mila - Quebec Artificial Intelligence Institute, Montreal, Canada

<sup>6</sup> Institute of Neuroscience and Medicine (INM-7), Research Centre Jülich, Jülich, Germany.

<sup>7</sup> Institute of Systems Neuroscience, Medical Faculty, Heinrich Heine University Düsseldorf, Düsseldorf, Germany.

<sup>8</sup> Department of Neurosurgery, Clinical Neuroscience Center, University Hospital and University of Zurich, Zurich, Switzerland

<sup>9</sup> Department of Neurology, Clinical Neuroscience Center, University Hospital and University of Zurich, Zurich, Switzerland

<sup>10</sup> Division of Pediatric Neurosurgery, University Children's Hospital, Zurich, Switzerland

\* shared

*Running title:* Brain tumor meta-topologies

*Corresponding author:*

Kevin Akeret, MD

Department of Neurosurgery, Clinical Neuroscience Center

University Hospital and University of Zurich

Frauenklinikstrasse 10

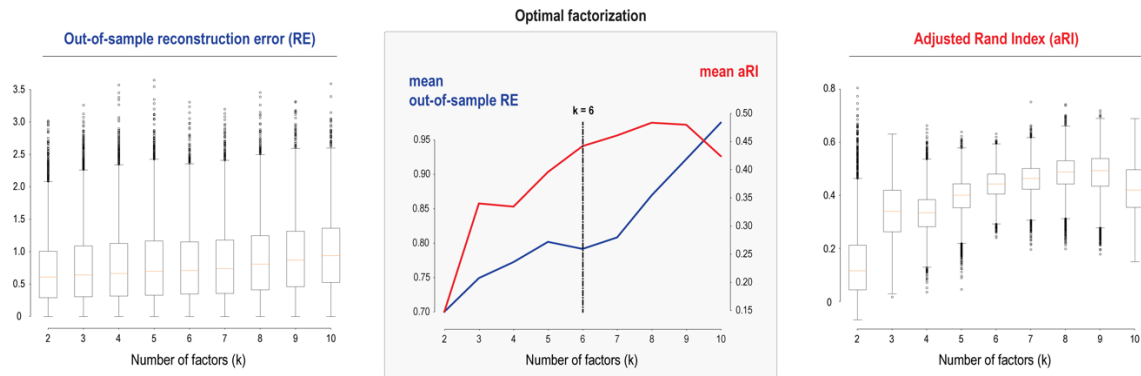
CH-8091 Zurich, Switzerland

Telephone: +41 44 255 11 11

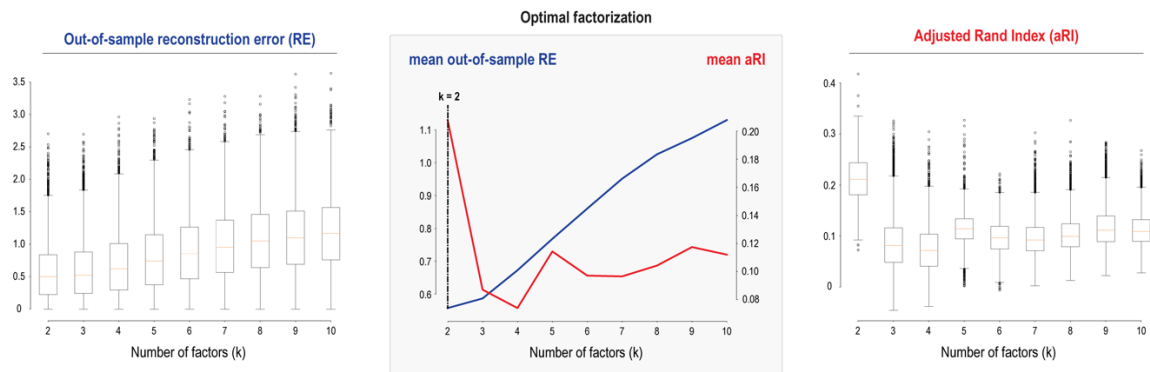
Email: kevin.akeret@usz.ch

ORCID: 0000-0002-5946-4999

## A Primary brain tumors



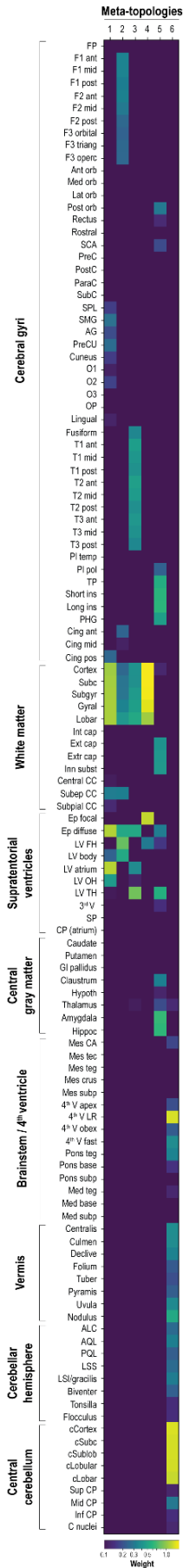
## B Brain metastases



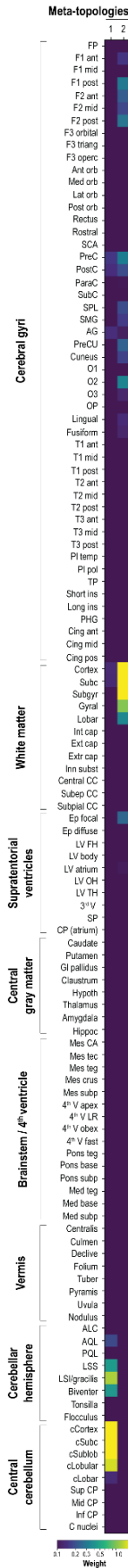
### Supplemental Figure 1. Optimal factorizations in primary and secondary brain tumors

Quantitative evaluation of different non-negative matrix factorization (NNMF) solutions with  $k$  number of factors assessed in 10,000 bootstrapped split-half analyses by the out-of-sample increase in the reconstruction error (RE) and the adjusted Rand Index (aRI). Lower values for the out-of-sample increase in RE indicate better generalizability. Higher values of aRI indicate higher stability. **A** The optimal factorization in primary brain tumors resulted in  $k=6$  meta-topologies. **B** The optimal factorization in brain metastases yielded  $k=2$  meta-topologies.

A Primary brain tumors



B Brain metastases



## Supplemental Figure 2. Detailed anatomy of primary and secondary brain tumor meta-topologies

Supplement to Figure 1 and 2: Meta-topologies in primary brain tumors (A) and brain metastases (B) with their detailed underlying neuroanatomical distribution. *Abbreviations (in vertical descending order)*: FP, frontal pole; F1, superior frontal gyrus; ant, anterior third; mid, middle third; post, posterior third; F2, middle frontal gyrus; F3 inferior frontal gyrus; Ant/Med/Lat/Post orb, anterior/medial/lateral/posterior orbital gyrus; SCA, subcallosal area; PreC, precentral gyrus; PostC, postcentral gyrus; ParaC, paracentral lobule; SubC, subcentral gyrus; SPL, superior parietal lobule; SMG, supramarginal gyrus; AG, angular gyrus; PreCU, precuneus; O1, superior occipital gyrus; O2, middle occipital gyrus; O3, inferior occipital gyrus; OP, occipital pole; T1, superior temporal gyrus; T2, middle temporal gyrus; T3, inferior temporal gyrus; Pl temp, planum temporale; Pl pol, planum polare; TP, temporal pole; ins, insular gyri; PHG, parahippocampal gyrus; Cingulate, cingulate gyrus; SubC, subcortical white matter sector; Subgyr, subgyral white matter sector; Gyral, gyral white matter sector; Lobar, lobar white matter sector; Int cap, internal capsule; Ext cap, external capsule; Extr cap, extreme capsule; Inn subst, innominate substance; CC, corpus callosum; Subep, subependymal; Ep, ependyma; LV, lateral ventricle; FH, frontal horn; OH, occipital horn; 3<sup>rd</sup> V, third ventricle; SP, septum pellucidum; CP, choroid plexus; Gl, globus; Hypoth, hypothalamus; Hippoc, hippocampus; Mes, mesencephalon; CA, cerebral aqueduct (of Sylvius); tec, tectum; teg, tegmentum; subp, subpial; 4<sup>th</sup> V, fourth ventricle; LR, lateral recess; fast, fastigium; ALC, ala lobuli centralis; AQL, anterior quadrangular lobule; PQL, posterior quadrangular lobule; LSS, superior semilunar lobule; LSI, inferior semilunar lobule; cCortex, cerebellar cortex; sSubc, cerebellar subcortical white matter sector; cSublob, cerebellar sublobular white matter sector; cLobular, cerebellar lobular white matter sector; cLobar, cerebellar lobar white matter sector; CP, cerebellar peduncle; C nuclei, cerebellar nuclei.

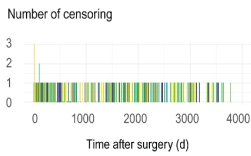
### A Primary brain tumors

#### Meta-topologies

+ Parieto-occipital neopallial (1)  
 + Frontal neopallial (2)  
 + Temporal neopallial (3)  
+ Unisegmental (4)  
 + Allopalial (5)  
 + Infratentorial (6)

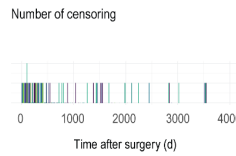
#### Primary brain tumors overall

Time after surgery (d)	0	1000	2000	3000	4000
Number at risk	141	24	11	3	0
	115	34	13	3	0
	69	11	3	1	0
	179	78	42	8	0
	70	20	9	3	0
	72	42	23	8	0



#### Glioblastoma

Time after surgery (d)	0	1000	2000	3000	4000
Number at risk	121	13	3	1	0
	76	8	4	1	0
	59	7	1	0	0
	91	16	6	3	0
	27	1	0	0	0
	5	0	0	0	0



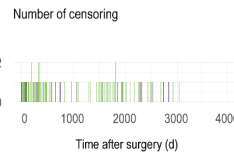
### B Brain metastases

#### Meta-topologies

+ Infratentorial (1)  
 + Supratentorial (2)

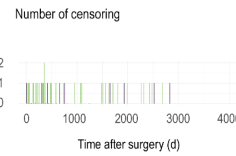
#### Brain metastases overall

Time after surgery (d)	0	1000	2000	3000	4000
Number at risk	76	12	4	0	0
	214	45	13	1	0



#### Lung cancer brain metastases

Time after surgery (d)	0	1000	2000	3000	4000
Number at risk	45	5	2	0	0
	96	20	5	0	0



## Supplemental Figure 3. Risk tables and censoring events for the meta-topology-specific survival analyses

Supplement to the Kaplan-Meier curves shown in Figure 4 providing the risk for an event over time (number at risk) and the number of censoring events over time (number of censoring) stratified by the corresponding meta-topology of highest relevance. **A.** Primary brain tumors overall (left) and glioblastoma (right). *Abbreviations:* d, days. **B.** Brain metastases overall (left) and lung cancer brain metastases (right).

### Supplemental Table 1. Cohort characteristics

The demographic, histopathologic, and clinical characteristics of the study cohort. *Abbreviations:* DT, developmental tumors; EP, ependymoma; gIIG, WHO grade II glioma; gIIIG, WHO grade III glioma; GBM, glioblastoma; GIT, gastrointestinal tract (mouth, tonsil, parotid, esophagus, stomach, gallbladder, pancreas, colorectal cancer); MB, medulloblastoma; Misc., miscellaneous (cancer of unknown primary, adrenal, leukemia, sarcoma, mesothelial, thyroid); PA, pilocytic astrocytoma; UGT, urogenital tract (kidney, bladder; ovary, tube, uterus; testes, prostate).

\*based on immunohistochemistry or PCR

	Primary brain tumors							
	Overall	GBM	gIIIG	gIIG	DT	EP	PA	MB
<b>n</b>	646	379	105	50	19	26	30	15
<b>Sex (male)</b>	402 (62.2)	244 (64.4)	63 (60.0)	31 (62.0)	12 (63.2)	14 (53.8)	21 (70.0)	9 (60.0)
<b>Age (years)</b>	50.1 (21.6)	60.8 (14.2)	46.4 (15.7)	43.1 (16.1)	20.4 (15.7)	24.6 (21.3)	11.7 (10.4)	16.6 (14.3)
<b>Karnofsky Performance Status</b>	80.0 (12.6)	76.9 (13.2)	84.1 (10.0)	86.7 (9.9)	87.6 (8.3)	86.7 (11.4)	82.9 (9.2)	83.0 (6.7)
<b>Modified Rankin Scale</b>	1.7 (1.0)	1.9 (1.0)	1.4 (0.7)	1.2 (0.7)	1.1 (0.6)	1.3 (0.9)	1.5 (0.7)	1.5 (0.5)
<b>Resection (vs. biopsy)</b>	510 (78.9)	285 (75.2)	81 (77.1)	37 (74.0)	19 (100.0)	24 (92.3)	30 (100.0)	14 (93.3)
<b>Chemotherapy</b>	428 (69.1)	269 (73.7)	89 (86.4)	35 (71.4)	0 (0.0)	13 (59.1)	2 (7.1)	14 (93.3)
<b>Radiotherapy</b>	473 (76.2)	311 (85.0)	91 (88.3)	29 (58.0)	2 (10.5)	17 (77.3)	0 (0.0)	15 (100.0)
<b>MIB1</b>	25.0 (20.6)	32.5 (19.2)	18.7 (17.4)	6.7 (4.8)	3.4 (4.4)	25.0 (24.4)	3.8 (3.6)	38.3 (26.5)
<b>1p19q co-deletion</b>	-	2 (9.1)	19 (23.8)	21 (61.8)	-	-	-	-
<b>IDH1 mutation*</b>	-	10 (3.4)	45 (51.1)	32 (72.7)	-	-	-	-
<b>MGMT promoter methylation</b>	-	82 (38.0)	9 (45.0)	4 (57.1)	-	-	-	-
	Metastases							
	Overall	Lung	Skin	GIT	Breast	UGT	Misc.	
<b>n</b>	290	141	44	37	27	24	17	
<b>Gender (m)</b>	149 (51.4)	77 (54.6)	24 (54.5)	24 (64.9)	1 (3.7)	16 (66.7)	7 (41.2)	
<b>Age (years)</b>	60.7 (11.9)	61.4 (9.9)	58.4 (13.6)	65.6 (10.3)	58.4 (12.5)	56.2 (18.3)	60.4 (10.3)	
<b>Karnofsky Performance Status</b>	76.9 (11.6)	77.7 (11.0)	79.8 (11.1)	74.1 (10.4)	77.8 (11.5)	71.2 (15.1)	75.9 (12.3)	
<b>Modified Rankin Scale</b>	2.0 (0.9)	1.9 (0.8)	1.8 (1.0)	2.2 (0.8)	1.9 (0.8)	2.4 (1.0)	1.9 (1.0)	
<b>Resection (vs. biopsy)</b>	277 (95.5)	136 (96.5)	43 (97.7)	36 (97.3)	27 (100.0)	23 (95.8)	12 (70.6)	
<b>Chemotherapy</b>	175 (62.3)	94 (69.1)	34 (77.3)	12 (33.3)	17 (65.4)	10 (41.7)	8 (53.3)	
<b>Radiotherapy</b>	255 (89.2)	128 (92.1)	42 (95.5)	31 (83.8)	25 (92.6)	18 (75.0)	11 (73.3)	

## Supplemental Table 2. Differential meta-topological anatomy in primary brain tumors

Top ten anatomical items that define each meta-topology in primary brain tumors.

Factor	Anatomical item	Weight	Factor	Anatomical item	Weight
1	Lateral ventricle – atrium	1.19	4	Cerebral cortex	1.58
	Ventricle wall – diffuse	1.17		Cerebral subcortical white matter	1.57
	Cerebral gyral white matter	1.11		Cerebral subgyral white matter	1.54
	Cerebral lobar white matter	1.11		Cerebral gyral white matter	1.41
	Cerebral subgyral white matter	1.10		Ventricle wall – focal	1.25
	Cerebral subcortical white matter	1.09		Cerebral lobar white matter	1.07
	Cerebral cortex	1.07		Lateral ventricle – frontal horn	0.30
	Lateral ventricle – occipital horn	0.45		Subcentral gyrus	0.09
	Subependymal corpus callosum	0.32		Short insular gyri	0.06
	Supramarginal gyrus	0.28		Medial orbital gyrus	0.06
2	Lateral ventricle – frontal horn	0.82	5	Amygdala	0.65
	Lateral ventricle – body	0.52		Hippocampus	0.62
	Ventricle wall – diffuse	0.52		Long insular gyri	0.61
	Cerebral lobar white matter	0.43		Short insular gyri	0.60
	Superior frontal gyrus – middle	0.34		Lateral ventricle – temporal horn	0.57
	Superior frontal gyrus – anterior	0.34		Temporal pole	0.56
	Cerebral gyral white matter	0.34		Parahippocampal gyrus	0.47
	Middle frontal gyrus – anterior	0.33		Innominate substance	0.44
	Subependymal corpus callosum	0.32		Extreme capsule	0.43
	Superior frontal gyrus – posterior	0.32		External capsule	0.41
3	Lateral ventricle – temporal horn	0.86	6	Cerebellar cortex	1.37
	Ventricle wall – diffuse	0.53		4th ventricle – lateral recess	1.35
	Cerebral lobar white matter	0.52		Cerebellar sublobular white matter	1.34
	Middle temporal gyrus – anterior	0.47		Cerebellar subcortical white matter	1.34
	Cerebral gyral white matter	0.47		Cerebellar lobular white matter	1.33
	Superior temporal gyrus – anterior	0.46		Cerebellar lobar white matter	1.27
	Middle temporal gyrus – middle	0.45		Vermis – nodulus	0.52
	Cerebral subgyral white matter	0.44		Vermis – centralis	0.38
	Inferior temporal gyrus – anterior	0.42		4th ventricle – fastigium	0.38
	Superior temporal gyrus – middle	0.42		Vermis – culmen	0.38

### Supplemental Table 3. Gyrality of primary brain tumors meta-topologies

The gyral character of each meta-topology, i.e., the number (*n*) and proportion (%) of tumors without gyral involvement (none), those involving one gyrus (unigyral), and tumors involving multiple gyri (multigyral).

	Meta-topology						
	Overall	1	2	3	4	5	6
<b>n</b>	646	141	115	69	179	70	72
<b>Gyrality (%)</b>							
<b>none</b>	119 (18.4)	6 (4.3)	17 (14.8)	3 (4.3)	0 (0.0)	22 (31.4)	71 (98.6)
<b>unigyral</b>	285 (44.1)	70 (49.6)	32 (27.8)	27 (39.1)	147 (82.1)	9 (12.9)	0 (0.0)
<b>multigyral</b>	242 (37.5)	65 (46.1)	66 (57.4)	39 (56.5)	32 (17.9)	39 (55.7)	1 (1.4)



#### Supplemental Table 4. Differential meta-topological anatomy in brain metastases

Top ten anatomical items that define meta-topologies 1 and 2 in brain metastases.

<b>Factor</b>	<b>Anatomical item</b>	<b>Weight</b>
<b>1</b>	Cerebellar cortex	<b>2.18</b>
	Cerebellar subcortical white matter	<b>2.17</b>
	Cerebellar sublobular white matter	<b>1.94</b>
	Cerebellar lobular white matter	<b>1.49</b>
	Inferior semilunar / gracile lobule	<b>1.24</b>
	Superior semilunar lobule	<b>0.47</b>
	Biventer lobule	<b>0.45</b>
	Anterior quadrangular lobule	<b>0.19</b>
	Precentral gyrus	<b>0.16</b>
	Postcentral gyrus	<b>0.15</b>
<b>2</b>	Cerebral subcortical white matter	<b>2.83</b>
	Cerebral cortex	<b>2.83</b>
	Cerebral subgyral white matter	<b>2.30</b>
	Cerebral gyral white matter	<b>1.03</b>
	Cerebral lobar white matter	<b>0.37</b>
	Middle occipital gyrus	<b>0.36</b>
	Precentral gyrus	<b>0.34</b>
	Superior frontal gyrus – posterior	<b>0.32</b>
	Middle frontal gyrus – posterior	<b>0.30</b>
	Ventricle wall – focal	<b>0.26</b>

**Supplemental Table 5. Cohort characteristics in primary brain tumors stratified by dominant meta-topology**

The demographic, histopathologic, and clinical characteristics of the patients with primary brain tumors overall (A) and with glioblastoma (B) stratified by the dominant meta-topology. \*based on immunohistochemistry or PCR

Meta-topology	Overall	1	2	3	4	5	6
<b>Primary brain tumors overall (A)</b>							
<b>n</b>	646	141	115	69	179	70	72
<b>Sex (male)</b>	402 (62.2)	88 (62.4)	64 (55.7)	48 (69.6)	119 (66.5)	39 (55.7)	44 (61.1)
<b>Age (years)</b>	50.1 (21.6)	59.6 (15.7)	54.0 (18.1)	57.7 (18.9)	49.4 (18.5)	50.4 (21.0)	19.1 (18.6)
<b>Karnofsky Performance Status</b>	80.0 (12.6)	78.2 (11.5)	75.8 (14.6)	78.7 (12.5)	84.8 (10.5)	79.5 (12.1)	80.4 (14.0)
<b>Modified Rankin Scale</b>	1.7 (1.0)	1.9 (0.9)	2.0 (1.0)	1.9 (1.0)	1.3 (0.8)	1.7 (0.9)	1.7 (1.0)
<b>Resection (vs. biopsy)</b>	510 (78.9)	99 (70.2)	75 (65.2)	60 (87.0)	171 (95.5)	44 (62.9)	61 (84.7)
<b>Chemotherapy</b>	428 (69.1)	100 (74.6)	71 (64.5)	50 (73.5)	135 (78.0)	40 (60.6)	32 (47.1)
<b>Radiotherapy</b>	473 (76.2)	114 (84.4)	81 (73.6)	56 (82.4)	144 (82.8)	44 (66.7)	34 (50.0)
<b>MIB1</b>	25.0 (20.6)	28.0 (18.0)	24.2 (18.2)	29.6 (21.4)	26.5 (22.1)	16.3 (17.0)	21.4 (24.3)
<b>1p19q co-deletion</b>	43 (31.4)	3 (21.4)	12 (52.2)	0 (0.0)	25 (34.7)	3 (13.6)	0 (0.0)
<b>IDH1 mutation*</b>	88 (19.6)	8 (7.5)	17 (19.5)	1 (2.0)	53 (37.6)	9 (20.5)	0 (0.0)
<b>MGMT promoter methylation</b>	95 (38.6)	28 (37.3)	18 (37.5)	17 (47.2)	24 (38.1)	7 (36.8)	1 (20.0)
<b>Glioblastoma (B)</b>							
<b>n</b>	401	121	76	59	91	27	5
<b>Sex (male)</b>	244 (64.4)	77 (63.6)	45 (59.2)	42 (71.2)	62 (68.1)	14 (51.9)	4 (80.0)
<b>Age (years)</b>	60.8 (14.2)	62.7 (12.3)	60.3 (14.7)	62.4 (13.7)	58.8 (15.4)	62.2 (8.6)	33.4 (25.1)
<b>Karnofsky Performance Status</b>	76.9 (13.2)	77.4 (12.0)	72.0 (14.7)	77.9 (12.8)	81.2 (11.4)	74.8 (12.2)	60.0 (27.1)
<b>Modified Rankin Scale</b>	1.9 (1.0)	2.0 (1.0)	2.2 (1.1)	1.9 (1.0)	1.6 (0.9)	2.1 (0.9)	3.2 (1.3)
<b>Resection (vs. biopsy)</b>	285 (75.2)	85 (70.2)	47 (61.8)	50 (84.7)	87 (95.6)	15 (55.6)	1 (20.0)
<b>Chemotherapy</b>	269 (73.7)	86 (74.1)	47 (64.4)	45 (77.6)	76 (85.4)	13 (52.0)	2 (50.0)
<b>Radiotherapy</b>	311 (85.0)	100 (85.5)	56 (76.7)	51 (87.9)	81 (91.0)	21 (84.0)	2 (50.0)
<b>MIB1</b>	32.5 (19.2)	30.6 (17.9)	30.0 (17.2)	32.8 (20.9)	36.8 (20.6)	31.7 (19.0)	40.6 (26.7)
<b>1p19q co-deletion</b>	2 (9.1)	0 (0.0)	1 (50.0)	0 (0.0)	1 (14.3)	0 (0.0)	0 (-)
<b>IDH1 mutation*</b>	10 (3.4)	3 (3.2)	4 (6.5)	0 (0.0)	3 (4.1)	0 (0.0)	0 (0.0)
<b>MGMT promoter methylation</b>	82 (38.0)	28 (38.4)	14 (34.1)	17 (48.6)	17 (33.3)	6 (42.9)	0 (0.0)

**Supplemental Table 6. Cohort characteristics in brain metastases stratified by dominant meta-topology**

The demographic, histopathologic, and clinical characteristics of the patients with brain metastases overall (A) and lung cancer brain metastases (B) stratified by the dominant meta-topology.

Meta-topology	Metastases overall (A)			Lung cancer metastases (B)		
	Overall	1	2	Overall	1	2
<b>n</b>	290	76	214	141	45	96
<b>Gender (m)</b>	149 (51.4)	41 (53.9)	108 (50.5)	77 (54.6)	26 (57.8)	51 (53.1)
<b>Age (years)</b>	60.7 (11.9)	58.5 (11.9)	61.5 (11.8)	61.4 (9.9)	58.7 (9.7)	62.6 (9.8)
<b>Karnofsky Performance Status</b>	76.9 (11.6)	77.5 (10.5)	76.7 (12.0)	77.7 (11.0)	78.9 (10.3)	77.2 (11.4)
<b>Modified Rankin Scale</b>	2.0 (0.9)	1.9 (0.8)	2.0 (0.9)	1.9 (0.8)	1.8 (0.7)	1.9 (0.9)
<b>Resection (vs. biopsy)</b>	277 (95.5)	72 (94.7)	205 (95.8)	136 (96.5)	43 (95.6)	93 (96.9)
<b>Chemotherapy</b>	175 (62.3)	49 (68.1)	126 (60.3)	94 (69.1)	32 (72.7)	62 (67.4)
<b>Radiotherapy</b>	255 (89.2)	67 (90.5)	188 (88.7)	128 (92.1)	41 (93.2)	87 (91.6)

**Supplemental Table 7. Pairwise comparison of survival curves stratified by meta-topologies in primary brain tumor overall and glioblastoma**

Evidence for a difference between the meta-topology-stratified survival curves in (A) primary brain tumors overall and in (B) glioblastoma according to pairwise comparison with the log-rank test and Bonferoni-Holm correction for multiple testing. \*\*\**very strong evidence* ( $p < 0.001$ ), \*\**strong evidence* ( $p < 0.01$ ), \**evidence* ( $p < 0.05$ ), +*weak evidence* ( $p < 0.1$ ).

Meta-topology	1	2	3	4	5
<b>(A) Primary brain tumors overall</b>					
2	0.041*	NA	NA	NA	NA
3	0.68	0.031*	NA	NA	NA
4	<0.0001***	0.0085**	<0.0001***	NA	NA
5	0.013*	0.51	0.0092**	0.11	NA
6	<0.0001***	<0.0001***	<0.0001***	<0.0001***	<0.0001***
<b>(B) Glioblastoma</b>					
2	0.58	NA	NA	NA	NA
3	0.81	0.76	NA	NA	NA
4	0.026*	0.0076**	0.03*	NA	NA
5	0.4	0.76	0.4	0.0075**	NA
6	0.43	0.75	0.4	0.074+	0.63