

1 Characterization of the humoral
2 immune response to BNT162b2 in
3 elderly residents of long-term care
4 facilities
5 five to seven months after
6 vaccination
7

8 Marla Delbrück^{1*}, Sebastian Hoehl^{1*}, Tuna Toptan¹, Barbara Schenk¹, Katharina Grikscheit¹, Melinda
9 Metzler¹, Eva Herrmann², Sandra Ciesek^{1,3,4}

10 1 Institute of Medical Virology, Goethe University Frankfurt, Germany

11 2 Institute of Biostatistics and Mathematical Modeling, Goethe University Frankfurt

12 3 Fraunhofer Institute for Molecular Biology and Applied Ecology (IME), Branch Translational
13 Medicine and Pharmacology, Frankfurt am Main, Germany

14 4 German Center for Infection Research, DZIF, Braunschweig, Germany.

15 *authors contributed equally
16

17
18 Corresponding author:

19 Sandra Ciesek, M.D.

20 Institute for Medical Virology

21 Paul-Ehrlich-Strasse 40

22 D-60596 Frankfurt am Main

23 Germany

24 sandra.ciesek@kgu.de

25

26

27 Abstract

28 The elderly residing in long-term care facilities (LTCFs) are a group at high risk for COVID-19. Hence,
29 monitoring of the vaccine-based immunity has a pivotal role in identifying strategies to provide
30 optimal protection in this population. We examined the immune response to the mRNA vaccine
31 BNT162b2 against COVID-19 five to seven months after completing a two-dose regimen.

32 We determined significantly lower anti-SARS-CoV-2 antibody titers in 298 SARS-CoV-2 naïve residents
33 who were at least 75 years of age (mean 51.60 BAU/ml) (median age 87 years, range 75 to 101 years)
34 when compared to health care workers (HCWs) aged 18 to 70 years (mean 156.99 BAU/ml, $p <$
35 0.001). Of the SARS-CoV-2 naïve residents, 29 had detectable neutralizing antibodies against the
36 Delta variant (9.5%), and 14 of those (48.3%) only had a borderline titer of 1:10. Of 114 HCWs, 36
37 (31.6%) had detectable neutralizing antibodies. In a group of 14 elderly residents who had had a PCR-
38 confirmed breakthrough infection, the mean antibody titer was significantly higher than in the other
39 two groups (3199.65 BAU/mL) ($p < 0.001$), and 12 (85.7%) had detectable neutralizing antibodies
40 against the Delta variant.

41 Our data demonstrate that 90.5% of elderly residents of LTCFs had no detectable neutralization-
42 competent antibodies against the dominant Delta variant five to seven months after vaccination, and
43 that neutralizing antibody titers were restored following a break-through infection. Our results
44 suggest that both residents and health care workers in LTCFs would benefit from a booster vaccine
45 six months after completing the two-dose schedule or earlier.

46

47

48

49 Introduction

50 Advanced age is a strong risk factor for severe and fatal disease when infected with SARS-CoV-2.¹⁻³ In
51 the elderly, in contrast to children and younger adults, coronavirus disease of 2019 (COVID-19) is
52 rarely asymptomatic⁴, and respiratory failure and organ dysfunction are present in many hospitalized
53 patients.^{5,6} Therefore older adults were designated a high priority to be vaccinated in the roll-out of
54 COVID-19 vaccines.⁷

55 Due to increased exposure to the virus, living in long-term care facilities (LTCFs) further increased
56 COVID-19-related mortality in this group of patients⁸. In Europe, 30 to 60% of all COVID-19-related
57 deaths were attributed to residents of LTCFs during the early pandemic.⁹ Early COVID-19 vaccine
58 studies found a high efficacy in adults^{10,11}, but the elderly, especially with comorbidities and frailty,
59 were commonly underrepresented or excluded.¹²

60 Waning immunity due to immunosenescence can lead to impaired immunity in these high-risk
61 patients.¹³ Vaccine-induced antibodies in the elderly display lower protective capacity, and T-cell
62 response is skewed towards short-lived effectors.¹⁴ In case of COVID-19, the vaccine is usually given
63 to establish novel immunity rather than boosting pre-existing immunity, which is the case in most
64 vaccines applied in the elderly. Although first real-world COVID-19 vaccine efficacy data have been
65 favorable, efficacy against hospitalization and death was lower in those 80 years of age and older
66 when compared to 65 to 79 years of age.¹⁵

67 The emergence of novel variants of concern, most recently the Delta variant, and the concerns about
68 waning immunity against symptomatic and severe COVID-19 raised a discussion on the need for a
69 booster shot. But there is uncertainty regarding the effect of age and frailty on immunity against
70 severe COVID-19 after vaccination.

71 In this study, we sought to determine whether markers of humoral and cellular immunity differ
72 significantly between older adults (≥ 75 years of age), and a control group of health care workers
73 (HCWs) six months after vaccination and analyzed the association of multiple variants, including
74 medication and multimorbidity, on the immune response.

75

76

77

78

79

80 Material and Methods

81 Recruitment of study participants and inclusion criteria

82 This is a non-interventional observational study. The Hessian Ministry for Social Affairs and Integration
83 commissioned this study and approached long-term care providers in Hesse with suitable
84 characteristics to participate in the study. All participants were informed about the aim of the study,
85 and written informed consent was obtained from either the study participants themselves or from
86 the legal guardian in case one had been appointed. Blood samples and data were collected at the LTC
87 facilities. Three groups of study participants were formed.

88 The complete two-dose schedule of BNT162b2 (Comirnaty, BioNTech/Pfizer), applied at the
89 recommended time interval of 21 days, had to be completed five to seven months before blood
90 collection regardless of the study group. Further inclusion criteria for study participants in the main
91 study group (*group 1*) of SARS-CoV-2 naïve residents in LTCFs for the elderly included age of at least
92 75 years at the day of their first vaccination. All participants with a known and confirmed SARS-CoV-2
93 infection in the past or a positive anti-SARS-CoV-2 nucleocapsid antibody test were excluded from
94 the main analysis. In addition, two control groups were also recruited: HCWs in LTCFs for the elderly
95 between the ages of 18 and 70 years were recruited to the first control group (*group 2*). HCWs with a
96 known SARS-CoV-2 infection in the past or a positive anti-SARS-CoV-2 nucleocapsid antibody titer
97 were excluded. The second control group (*group 3*) was comprised of residents of the age of 75 years
98 or older with a subsequent, PCR-confirmed SARS-CoV-2 breakthrough infection no earlier than 14
99 days after the second vaccination.

100 Markers of the humoral immune response

101 Anti-SARS-CoV-2 Nucleocapsid Antibody Assay

102 To determine whether a previous infection with SARS-CoV-2 had occurred, serum samples were
103 tested for the presence of anti-SARS-CoV-2 nucleocapsid antibodies. We used the Abbott ARCHITECT

104 SARS-CoV-2 IgG test (Abbott Laboratories, Abbott Park, Illinois, USA). Detected antibodies may be
105 elicited after infection, but not vaccination with an mRNA vaccine.

106 Anti-SARS-CoV-2 Spike IgG Antibody Assay

107 Serum samples were tested for the presence of anti-SARS-CoV-2 Spike IgG antibodies. For this, we
108 used the AdviseDx SARS-CoV-2 IgG II assay on the Abbott Alinity i® platform (Abbott Laboratories,
109 Abbott Park, Illinois, USA). This assay detects antibodies targeted specifically against the receptor-
110 binding domain of SARS-CoV-2. The results are provided in standardized binding antibody units (BAU)
111 per ml. A result of less than 7.1 BAU/ml was considered negative, and a result of 7.1 to 8.51 BAU/ml
112 was considered positive. Detectable antibodies may be elicited after both infection and vaccination
113 with an mRNA vaccine.

114 Neutralization assay against the Delta variant

115 Serum samples were further analyzed for the presence of antibodies with neutralizing capacity
116 against the Delta variant of SARS-CoV-2 (B.1.617.2) in a biosafety level 3 laboratory. The
117 methodology of the SARS-CoV-2 neutralization assay has been described elsewhere.¹⁶

118 In brief, serum samples were serially diluted (1:2) and incubated with 4000 TCID₅₀/mL of the Delta
119 variant of SARS-CoV-2 (B.1.617.2) for one hour prior to infection of CaCo-2 cells. After 48 hours
120 inoculation infected cells were examined for cytopathic effect (CPE) formation by light microscopy to
121 determine the neutralization titer.

122 **Clinical parameters and patient history**

123 Items were recorded in an interview with each study participant and derived from the patient history
124 form with consent of the patient, or legal guardian if one had been appointed. Study participants
125 from the HCW-group provided information on the items themselves. These items were: (i) date of
126 birth (ii) dates of vaccination with BNT162B2 (iii) current height and weight (iv) known medical
127 diagnoses (v) current medication.

128 **Statistical analysis**

129 Data analysis was performed using RStudio Version 1.4.1717. Mean Anti-SARS-CoV-2 spike IgG
130 antibody titers were tested for normality (Shapiro-Wilk test), and homogeneity of variance between
131 the three study groups respectively (Levene's test) The threshold for statistical significance was $\alpha <$
132 0.05 in two-sided t-tests.

133 **Funding source and ethical approval**

134 The study was commissioned and funded by the Hessian Ministry of Social Issues and Integration.

135 The study protocol has been approved by the ethics board of the University Hospital Frankfurt (No.
136 20-864) and has been registered on the German Clinical Trial Register (DRKS00025813).

137 Results

138 Study population

139 Samples were collected from 22nd July to 16th September 2021 in 16 LTCFs in Hesse, Germany.

140 Group 1: Residents of LTCFs \geq 75 years of age without prior infection or 141 breakthrough infection

142 A total of 298 residents of the LTCFs participated in the study and were included in group 1.
143 212 (71.1%) were female, 86 (28.9%) were male, and none reported non-binary gender. The median
144 age was 86 years (range: 75 to 101 years, IQR: 82 to 90.8 years). The mean Body Mass Index (BMI)
145 was 25.6 kg/m² ranging from 14.9 kg/m² to 42.9 kg/m².

146 Group 2: HCWs aged 18 to 70 years of age

147 114 HCWs were included in group 2. 83 (77.8%) were female, and 31 (27.2%) were male. None
148 reported non-binary gender. The median age was 53 years (range: 24 to 70 years, IQR: 45.3 to 59.8
149 years). The mean BMI was 26.8 kg/m² ranging from 18 to 50 kg/m².

150 Group 3: Residents of LTCFs \geq 75 years of age with breakthrough infection

151 14 residents of the LTCFs were included in group 3. 13 were female (92.9%), one was male (7.14%),
152 none reported non-binary gender. The mean number of days between the second vaccination and
153 the positive PCR test result was 109 days. The earliest breakthrough infection happened 19 days, and
154 the latest 211 days after the second vaccination. The median age was 89 years (range: 82 to 93 years,
155 IQR: 86.3 - 91). The mean BMI was 24.24 kg/m² ranging from 17 to 32 kg/m².

156 **Table 1** provides an overview of the study participants in all three groups.

157 Markers of the humoral immune response

158 Of the study participants in group 1 (residents \geq 75 years of age without known prior infection or
159 breakthrough infection), 6 (0.02%) had detectable SARS-CoV-2 nucleocapsid antibodies and were
160 excluded from the primary analysis. In group 2 (HCWS aged 18 to 70 years without a prior infection

161 or breakthrough infection) no participant had detectable SARS-CoV-2 nucleocapsid antibodies. In
162 group 3, which was comprised of residents with a PCR-confirmed breakthrough infection, only 4 of
163 14 participants (28.6%) had detectable anti-SARS-CoV-2 nucleocapsid antibodies.

164 50 participants (16.78%) in group 1 tested negative for anti-SARS-CoV-2 spike IgG antibodies, 9
165 (3.02%) had a borderline positive result and 239 (80.2%) tested positive. In the first control group of
166 HCWs (group 2), a vast majority of 97.37% (111/114) of participants tested positive. Two participants
167 tested negative, and one tested borderline positive. In the second control group of residents with a
168 breakthrough infection (group 3), all 14 participants tested positive for anti-SARS-CoV-2 spike IgG
169 antibodies (14/14) (**figure 1**).

170 In group 1, the anti-SARS-CoV-2 spike IgG antibody concentration had a mean of 51.60 BAU/ml
171 (range: 0.90 – 710.64 BAU/ml, IQR: 12.09 – 61.47 BAU/ml). This was lower than in group 2, which had
172 a mean of 156.99 BAU/ml (range: 5.61 – 2008.16 BAU/ml, IQR: 57.04 – 176.29 BAU/ml). This
173 difference was statistically significant (CI 95%, $p < 0.001$) (**figures 1-3**). In these groups, a linear
174 decline with age was observed, which was more prominent in group 1 (CI 95%, $p < 0.001$) (**figure 1**).
175 In group 3, the mean antibody concentration of anti-SARS-CoV-2 RBD IgG was highest, with 3199.65
176 BAU/mL (range: 58.73 – 11360.00 BAU/ml, IQR: 857.65 – 4601.88 BAU/ml). This is significantly higher
177 than in group 1 and group 2 (CI 95%, $p < 0.001$, respectively).

178 Neutralizing antibodies against the Delta variant were detected in 29 study participants (9.7%) of
179 group 1, of which 14 (48.3%) had a borderline positive titer of 1:10. In group 2, 36 participants
180 (31.6%) had detectable neutralizing antibodies against the Delta variant, of which 16 were borderline
181 positive (titer of 1:10). In group 3, residents with a breakthrough infection, 12 (85.7%) had
182 detectable neutralizing antibodies against the Delta variant, of which none were borderline (**figure**
183 **4**).

184

185

186 Discussion

187 Here, we report the analysis of markers of the humoral response five to seven months after
188 vaccination with the mRNA vaccine BNT162b2 in a group of residents of LTCFs. The SARS-CoV-2 naïve
189 residents, aged ≥ 75 years of age, had a significantly lower concentration of anti-RBD-antibodies than
190 younger health HCWs (**figures 2 and 3**). A linear decline with age was observed in both the group of
191 residents and HCWs but was more marked in the elderly (**figure 1**).

192 The elderly also had a smaller fraction of individuals with detectable neutralizing antibodies against
193 the Delta variant (9.7%, **figure 4**). Almost half (48.3%) of this minority with detectable neutralization
194 only exhibited a borderline positive titer of 1:10. While the mean anti-SARS-CoV-2 IgG antibody
195 concentration in our control group of younger HCWs was significantly higher, neutralization against
196 the Delta variant was also only detected in a minority of 31.6% of the participants in this group five
197 to seven months after having completed a full series of vaccination.

198 A breakthrough infection vastly increased both the antibody concentration and fraction of individuals
199 with detectable Delta-neutralizing antibodies among the elderly study participants, demonstrating
200 recoverability of the humoral immune response.

201 These data support that a booster vaccine would be beneficial in this high-risk group of patients six
202 months or earlier after completing the two-dose schedule with an mRNA vaccine. This is in
203 coherence with other studies in this age group, even though studies based on pseudovirus
204 neutralization assays provided divergently higher rates of neutralization.¹⁷ A possible explanation
205 might be that for the neutralization assays we employed an authentic Delta variant isolate¹⁶ rather
206 than a pseudovirus. Clinical isolates harbor additional mutations outside the Spike region which can
207 impact the viral fitness or sensitivity to antibodies in cell culture. Markers of the cellular response of
208 the study participants are currently examined and will be published when available. These additional
209 data may influence the interpretation of the study results.

210 Since a majority of HCWs from these facilities, a group at large risk of transmitting infection to
211 vulnerable patients, also did not have detectable neutralizing antibodies against the Delta variant, a
212 booster of the humoral response appears indicated in this group as well.

213 Of the study participants in group 3, all of which had had a PCR-confirmed breakthrough infection,
214 only 28.6% had detectable anti-nucleocapsid IgG response. This highlights that infection with SARS-
215 CoV-2 in this group may occur without mounting an anti-nucleocapsid response, and some of the
216 other participants may also have had an unknown infection that went undetected. Additional
217 limitations of our study include that break-through infections in group 3 occurred at diverse time
218 points before blood samples were taken. In addition to age, immunogenicity and efficacy of vaccines
219 may be influenced and suppressed by several factors, including other medical conditions, and body
220 composition with a very low or high BMI.¹⁸

221 Analyses of these factors in our study cohort will be provided in a subsequent publication.

222

223

224

225 **Tables**

226 **Table 1: Characteristics of the study participants**

	Participants (n = 426)
Role	[% of all participants]
Group 1: <i>Residents ≥ 75 years of age</i>	298 (70%)
Group 2: <i>HCWs aged 18 to 70 years of age</i>	114 (26.8%)
Group 3: <i>Residents with breakthrough infection</i>	14 (3.2%)
Age at day of first vaccination	[median (IQR)]
Group 1	86.0 (82.0 - 90.75)
Group 2	53.0 (45.25 - 59.75)
Group 3	89.0 (86.25 - 91)
Sex	[% in each group]
Group 1	
Female	212 (71.1%)
Male	86 (28.9%)
Group 2	
Female	83 (72.8%)
Male	31 (27.2%)
Group 3	
Female	13 (92.9%)
Male	1 (7.1%)
BMI	[median in kg/m² (IQR)]
Group 1	25.3 (22.4 - 28.6)
Group 2	26.4 (22.5 - 30.2)
Group 3	23.34 (20.47 - 28.64)
Interval between second vaccination and blood draw	6.49 (5.08 - 7.70) [median in months (range)]

227

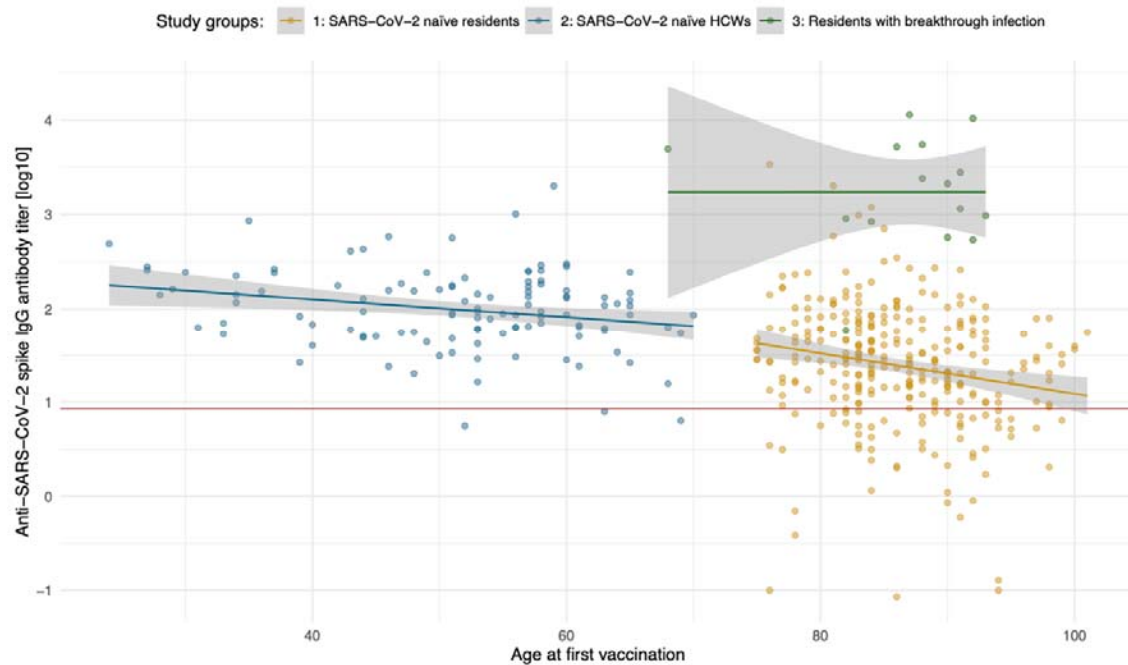
228

229

230 **Figures**

231 **Figure 1:** Anti-SARS-CoV-2 spike IgG titer (logarithmic) by study participants' age.

232 Group 1 (residents of LTCFs ≥ 75 years of age; orange), group 2 (HCWs at LTCFs, 18 to 70 years of
233 age; blue), group 3 (residents of LTCFs after a breakthrough infection, green). Plotted within the
234 scatter is the linear regression (lines in colors of the respective study groups) with the standard error
235 (grey areas, 95% CI). The red line displays the cut-off anti-SARS-CoV-2 spike IgG antibody
236 concentration of 8.52 BAU/ml, which is considered a positive test result (borderline: 7.10 - 8.51
237 BAU/ml).



238

239

240

241

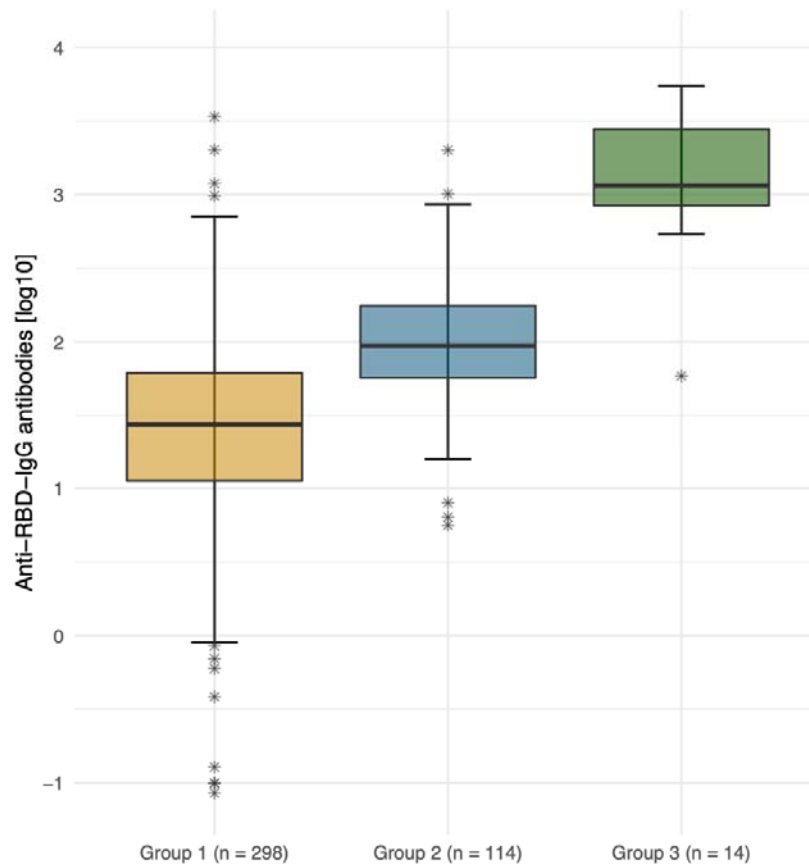
242

243

244

245

246 **Figure 2:** Anti-SARS-CoV-2 spike IgG antibody titers (logarithmic) by group.
247 Logarithmic depiction in boxplots, 95% CI and IQR (25%-75%) of group 1 (residents of LTCFs \geq 75
248 years of age; orange), group 2 (HCWs at LTCFs, 18 to 70 years of age; blue), and group 3 (residents of
249 LTCFs after breakthrough infection, green). Stars represent outliers.



250

251

252

253

254

255

256

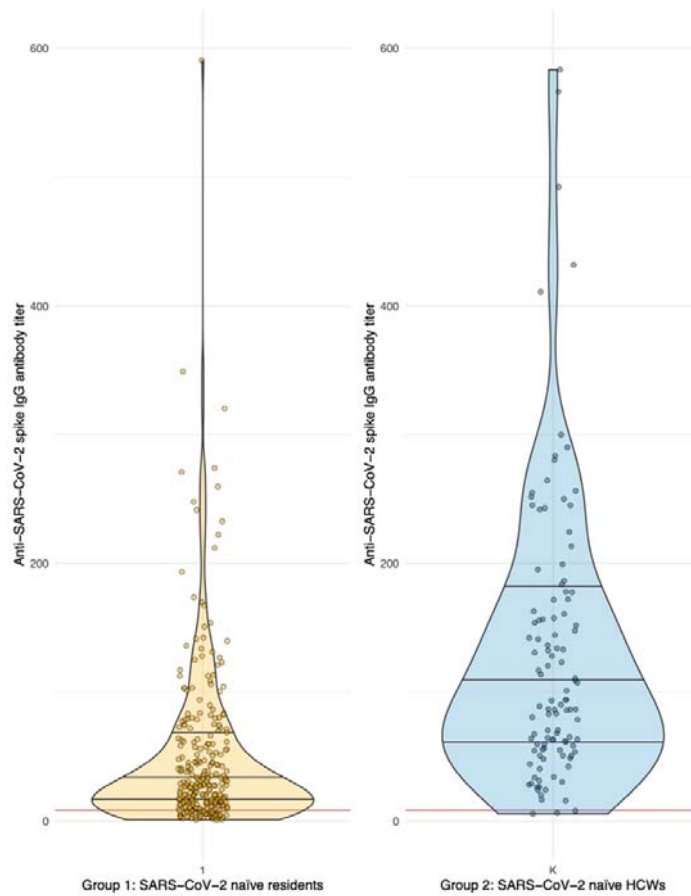
257

258

259

260 **Figure 3:** Anti-SARS-CoV-2 spike IgG antibody titer (non-logarithmic).

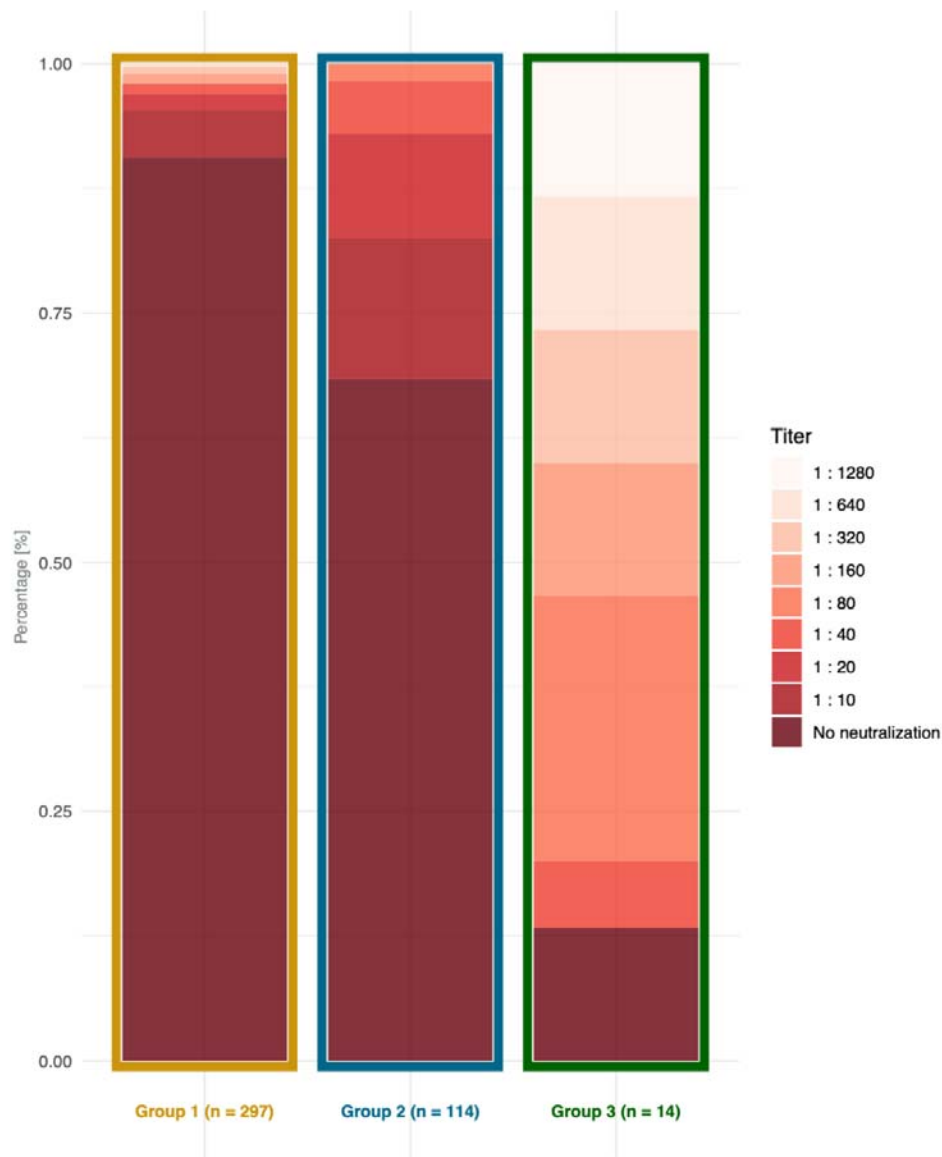
261 Violin plots for visualization of differences in the distribution of anti-SARS-CoV-2 spike IgG antibody
262 titers of groups 1 (residents of LTCFs ≥ 75 years of age; orange) and 2 (HCWs at LTCFs, 18 to 70 years
263 of age; blue). The red line displays the cut-off anti-SARS-CoV-2 spike IgG antibody concentration of
264 8.52 BAU/ml, which is considered a positive test result (borderline: 7.10 - 8.51 BAU/ml).



265

266

267 **Figure 4:** Barplots depicting the fraction of study participants in group 1 (residents of LTCFs ≥ 75
268 years of age), group 2 (HCWs at LTCFs, 18 to 70 years of age), and group 3 (residents of LTCFs after
269 breakthrough infection) who exhibit neutralization titers against the Delta variant five to seven
270 months after receiving the second dose of an mRNA vaccine.



272 Acknowledgments

273 The authors thank the staff of the facilities we visited, for their aid in conducting our investigation,
274 and their tireless work in the pandemic and beyond.

275 We also thank all residents and staff who donated blood for this study.

276

277 Potential conflicts of interest

278 S.C. received honorarium for serving on a clinical advisory board for BioNTech.

279

280

281 Literature

282

283 1. Du, R.-H., Liang, L.-R., Yang, C.-Q., Wang, W., Cao, T.-Z., Li, M., Guo, G.-Y., Du, J., Zheng, C.-L., Zhu,
284 Q., et al. (2020). Predictors of mortality for patients with COVID-19 pneumonia caused by SARS-CoV-
285 2: a prospective cohort study. *Eur Respir J* 55, 2000524.

286 2. Trecarichi, E.M., Mazzitelli, M., Serapide, F., Pelle, M.C., Tassone, B., Arrighi, E., Perri, G., Fusco, P.,
287 Scaglione, V., Davoli, C., et al. (2020). Clinical characteristics and predictors of mortality associated
288 with COVID-19 in elderly patients from a long-term care facility. *Sci Rep-uk* 10, 20834.

289 3. Wang, Y., Lu, X., Li, Y., Chen, H., Chen, T., Su, N., Huang, F., Zhou, J., Zhang, B., Yan, F., et al. (2020).
290 Clinical Course and Outcomes of 344 Intensive Care Patients with COVID-19. *Am J Resp Crit Care* 0,
291 1430–1434.

292 4. Sah, P., Fitzpatrick, M.C., Zimmer, C.F., Abdollahi, E., Juden-Kelly, L., Moghadas, S.M., Singer, B.H.,
293 and Galvani, A.P. (2021). Asymptomatic SARS-CoV-2 infection: A systematic review and meta-
294 analysis. *Proc National Acad Sci* 118, e2109229118.

295 5. Neumann-Podczaska, A., Al-Saad, S.R., Karbowski, L.M., Chojnicki, M., Tobis, S., and Wieczorowska-
296 Tobis, K. (2020). COVID 19 - Clinical Picture in the Elderly Population: A Qualitative Systematic
297 Review. *Aging Dis* 11, 988–1008.

298 6. Liu, K., Chen, Y., Lin, R., and Han, K. (2020). Clinical features of COVID-19 in elderly patients: A
299 comparison with young and middle-aged patients. *J Infection* 80, e14–e18.

300 7. Organization, T.W.H. (2020). WHO SAGE values framework for the allocation and prioritization of
301 COVID-19 vaccination. [https://apps.who.int/iris/bitstream/handle/10665/334299/WHO-2019-nCoV-](https://apps.who.int/iris/bitstream/handle/10665/334299/WHO-2019-nCoV-SAGE_Framework-Allocation_and_prioritization-2020.1-eng.pdf?sequence=1&isAllowed=y)
302 [SAGE_Framework-Allocation_and_prioritization-2020.1-eng.pdf?sequence=1&isAllowed=y](https://apps.who.int/iris/bitstream/handle/10665/334299/WHO-2019-nCoV-SAGE_Framework-Allocation_and_prioritization-2020.1-eng.pdf?sequence=1&isAllowed=y).

303 8. Amore, S., Puppo, E., Melara, J., Terracciano, E., Gentili, S., and Liotta, G. (2021). Impact of COVID-
304 19 on older adults and role of long-term care facilities during early stages of epidemic in Italy. *Sci*
305 *Rep-uk* 11, 12530.

306 9. Team, E.P.H.E., Danis, K., Fonteneau, L., Georges, S., Daniau, C., Bernard-Stoecklin, S., Domegan, L.,
307 O'Donnell, J., Hauge, S.H., Dequeker, S., et al. (2020). High impact of COVID-19 in long-term care
308 facilities, suggestion for monitoring in the EU/EEA, May 2020. *Eurosurveillance* 25, 2000956.

309 10. Polack, F.P., Thomas, S.J., Kitchin, N., Absalon, J., Gurtman, A., Lockhart, S., Perez, J.L., Marc, G.P.,
310 Moreira, E.D., Zerbini, C., et al. (2020). Safety and Efficacy of the BNT162b2 mRNA Covid-19 Vaccine.
311 *New Engl J Med* 383, 2603–2615.

312 11. Baden, L.R., Sahly, H.M.E., Essink, B., Kotloff, K., Frey, S., Novak, R., Diemert, D., Spector, S.A.,
313 Roupael, N., Creech, C.B., et al. (2020). Efficacy and Safety of the mRNA-1273 SARS-CoV-2 Vaccine.
314 *New Engl J Med* 384, 403–416.

315 12. Soiza, R.L., Scicluna, C., and Thomson, E.C. (2020). Efficacy and safety of COVID-19 vaccines in
316 older people. *Age Ageing* 50, 279–283.

- 317 13. Poland, G.A., Ovsyannikova, I.G., and Kennedy, R.B. (2018). Personalized vaccinology: A review.
318 *Vaccine* 36, 5350–5357.
- 319 14. Gustafson, C.E., Kim, C., Weyand, C.M., and Goronzy, J.J. (2020). Influence of immune aging on
320 vaccine responses. *J Allergy Clin Immun* 145, 1309–1321.
- 321 15. Nunes, B., Rodrigues, A.P., Kislaya, I., Cruz, C., Peralta-Santos, A., Lima, J., Leite, P.P., Sequeira, D.,
322 Dias, C.M., and Machado, A. (2021). mRNA vaccine effectiveness against COVID-19-related
323 hospitalisations and deaths in older adults: a cohort study based on data linkage of national health
324 registries in Portugal, February to August 2021. *Eurosurveillance* 26.
- 325 16. Wilhelm, A., Toptan, T., Pallas, C., Wolf, T., Goetsch, U., Gottschalk, R., Vehreschild, M.J.G.T.,
326 Ciesek, S., and Widera, M. (2021). Antibody-Mediated Neutralization of Authentic SARS-CoV-2
327 B.1.617 Variants Harboring L452R and T478K/E484Q. *Viruses* 13, 1693.
- 328 17. Collier, D.A., Ferreira, I.A.T.M., Kotagiri, P., Datir, R.P., Lim, E.Y., Touizer, E., Meng, B., Abdullahi,
329 A., Collaboration, T.C.-N.B.C.-19, Investigators, P., et al. (2021). Age-related immune response
330 heterogeneity to SARS-CoV-2 vaccine BNT162b2. *Nature* 596, 417–422.
- 331 18. Mitsunaga, T., Ohtaki, Y., Seki, Y., Yoshioka, M., Mori, H., Suzuka, M., Mashiko, S., Takeda, S., and
332 Mashiko, K. (2021). The evaluation of factors affecting antibody response after administration of the
333 BNT162b2 vaccine: a prospective study in Japan. *Peerj* 9, e12316.

334