

1 **Title:** Interleukin-33 stimulates stress in the endoplasmic reticulum of the human
2 myometrium via an influx of calcium during initiation of labor

3 Li Chen^{1*}, Zhenzhen Song^{1*}, Xiaowan Cao^{2*}, Mingsong Fan¹, Yan Zhou¹, Guoying
4 Zhang^{1#}

5 ¹Department of Obstetrics, The First Affiliated Hospital of Nanjing Medical
6 University, Nanjing 210036, China

7 ²Department of Obstetrics, The Affiliated Wuxi Maternity and Child Health Care
8 Hospital of Nanjing Medical University, Wuxi 214002, China

9 **Short title:** IL-33 stimulates stress via an influx of calcium

10 *Li Chen, Zhenzhen Song and Xiaowan Cao contributed equally to this article.

11 #Correspondence to: Guoying Zhang

12 Department of Obstetrics

13 The First Affiliated Hospital of Nanjing Medical University

14 Jiangdong North Road 368

15 Nanjing, China 210036

16 Telephone: +86-025-68308882

17 Email address: zhangguoying@jsph.org.cn

18 **Abstract**

19 **Background:** Inflammation is currently recognized as one of the major causes of
20 premature delivery. As a member of the IL-1 β family, interleukin-33 (IL-33) has been
21 shown to be involved in a variety of pregnancy-related diseases. This study aims to
22 investigate the potential function of IL-33 in uterine smooth muscle cells during labor.

23 **Methods:** Samples of myometrium from term pregnant (≥ 37 weeks gestation) women
24 were frozen or cells were isolated and cultured. Immunohistochemistry and western
25 blotting were used to identify the distribution of IL-33. Cultured cells were incubated
26 with LPS to mimic inflammation as well as 4 μ 8C to block endoplasmic reticulum (ER)
27 stress and BAPTA-AM, a calcium chelator.

28 **Results:** Similar with onset of labor, LPS could reduce the expression of nuclear
29 IL-33 in a time-limited manner and induced ER stress. Meanwhile, Knockdown of
30 IL-33 increased LPS-induced calcium concentration, ER stress and phosphorylation
31 of NF- κ B and p38. In addition, siRNA IL-33 further simulates LPS enhanced COX-2
32 expression via NF- κ B and p38 pathways. IL-33 expression was decreased in the
33 nucleus with the onset of labor. LPS induced ER stress and increased expression of
34 the labor-associated gene, COX-2, as well as IL-6 and IL-8 in cultured myometrial
35 cells. IL-33 also increased COX-2 expression. However, after IL-33 was knockdown,
36 the stimulating effect of LPS on calcium was enhanced. 4 μ 8C also inhibited the
37 expression of COX-2 markedly. The expression of calcium channels on the membrane
38 and intracellular free calcium ion were both increased accompanied by
39 phosphorylated NF- κ B and p38.

40 **Conclusions:** These data suggest that IL-33 may be involved in initiation of labor by

41 leading to stress of the ER via an influx of calcium ions in human uterine smooth

42 muscle cells.

43 **Funding:** This study was supported by grants from the National Natural Science

44 Foundation of China (Nos. 81300507).

45

46 **Introduction**

47 Preterm delivery occurs before 37 weeks of gestation and is one of the major
48 causes of perinatal morbidity and mortality^[1]. The main difference between preterm
49 and term labor is when the initiation of labor begins. It is widely accepted that
50 infection, uterine over-distension, decline in progesterone action, breakdown of
51 maternal-fetal tolerance, stress and other unknown reasons are involved in preterm
52 labor^[2]. However, all of these reasons lead to inflammatory events. These are mainly
53 due to the identification of microorganisms and their products, and increased secretion
54 of pro-inflammatory cytokines and chemokines in the decidua and myometrium,
55 which enable leukocytes to infiltrate the uterus leading to its activation^[3,4].

56 As a member of IL-1 family, IL-1 β is one of the well-recognized inflammatory
57 factors that induce the initiation of labor. Interleukin-33 (IL-33) is a member of the
58 IL-1 β family and is expressed in a variety of cells, including innate immune
59 (macrophage and dendritic), Th2, B, epithelial, endothelial and muscle cells. Also, it
60 has been shown to have a key role in various diseases, including inflammatory,
61 autoimmune (including asthma), cardiovascular and allergic diseases^[5,6].

62 Recently, Huang et al. found that after exogenous administration of IL-33, it was
63 able to activate B cell-mediated immune regulation and promote the expression of
64 progesterone-induced blocking factor 1 (PIBF1), which plays an essential role in
65 safeguarding against preterm labor^[7]. Preliminary data showed that IL-33 was mainly
66 located in the nuclei of myometrial cells, and with the onset of labor, IL-33 expression
67 in the nucleus decreased. Studies also showed that mast cells responded to the

68 secretion of IL-33 after exposure to the allergens and this affected airway smooth
69 muscle hyper-responsiveness by promoting the contraction and enhancing calcium
70 influx of airway smooth muscle, leading asthma attacks^[8, 9]. In addition, IL-33 was
71 found to be effective in alleviating the myocardial endoplasmic reticulum (ER) stress
72 response caused by myocardial injury^[10, 11]. These studies suggested a potential role
73 of IL-33 in human parturition and prompted us to investigate the changes in IL-33
74 expression in the nucleus of the myometrium during the third trimester of pregnancy.

75 **Results**

76 **Nuclear expression of IL-33 is reduced during labor**

77 In order to establish the nuclear function of IL-33, we first confirmed the presence
78 of the nuclear protein in human uterine smooth muscle cells. Immunohistochemistry
79 with the anti-IL-33 antibody revealed that IL-33 was expressed in the nuclei of
80 myometrial cells. The term labor (TL) and preterm labor (PTL) groups showed weak
81 staining of IL-33 in the nuclei of myometrium cells. In contrast, strong nuclear
82 staining of IL-33 was observed in the myometrial cells of term nonlabor (TNL) and
83 preterm nonlabor (PNL) groups (Figure 1A).

84 In order to identify the localization of IL-33 changes during labor,
85 immunofluorescence staining was performed on myometrium sections. This also
86 confirmed the nuclear localization of IL-33 in the myometrium cells. It should be
87 noted that the expression of nuclear IL-33 was more intense in the TNL and PNL
88 groups when compared with TL and PTL groups. There were similar levels of staining
89 in the two no labor groups as well as the two labor groups (Figure 1B). Western

90 blotting analysis revealed that there was no difference in the expression of total IL-33
91 among all groups. To confirm the nuclear localization of the IL-33, we separated the
92 cytoplasmic and nuclear fraction of myometrial cells. There was decreased levels of
93 nuclear IL-33 from the TNL to the TL groups, which was consistent with the change
94 seen from PNL to PTL. The results of qPCR suggested that mRNA expression of
95 total IL-33 was not different between the different groups (Figure 1C).

96 **Treatment with LPS resulted in a time-dependent nuclear IL-33 decrease**

97 To examine the function and the mechanisms of nuclear IL-33 during parturition,
98 myometrial cells were incubated with LPS and the kinetic changes of IL-33 we
99 visualized by confocal microscopy. Following treatment with LPS, there was a
100 marked decrease in endonuclear IL-33 levels for approximately 3 hours and then
101 increased to above control values by 12 hours, which was higher than that in the
102 control group (Figure 2A). For the following 12h the levels appeared to decrease
103 again. We next investigated the effect of LPS on the localization of IL-33 in these
104 cells. Western blots confirmed that the expression levels of total IL-33 were reduced
105 within 6 hours, then peaked at 12 hours. The cytoplasmic and nuclear fractions of
106 primary myometrial cells were also isolated at different time points after LPS
107 treatment. Western blot analysis showed that nuclear IL-33 reduced with the
108 stimulation by LPS. However, the levels again peaked in the nucleus at 12 hours, and
109 was higher than seen in control cells (Figure 2B).The above shows that LPS induces a
110 time-dependent reduction of IL-33 in the nucleus.

111 **Silencing of IL-33 enhances LPS-induced calcium ion levels**

112 To investigate whether the presence of IL-33 regulates uterine smooth muscle
113 contraction, knockdown experiments targeting IL-33 were performed before LPS
114 treatment for 6 hours or 12 hours, respectively. After stimulating for 6 hours, the
115 increase in intracellular calcium levels was observed by using a laser confocal
116 microscope to observe intracellular fluorescent probes which was consistent with the
117 calcium channels status (Figure 3A). Apparent enhancement in protein levels of
118 calcium channels proteins, Cav3.1 and Cav3.2, were demonstrated after siRNA-based
119 LPS treatment while siRNA-mediated efficient knockdown of IL-33 was
120 simultaneously observed (Figure 3B).

121 **Inhibition of cytoplasmic calcium attenuates LPS induced ER and COX-2**

122 LPS was able to induce cytoplasmic calcium levels and ER stress in uterine
123 smooth muscle cells, but whether there is a correlation between the two is unknown.
124 In this study, BAPTA-AM was used to evaluate the role of elevated cytoplasmic
125 calcium levels during ER stress. The results showed an attenuation in the expression
126 of LPS-induced COX-2 after 12 hours of preloading cells with BAPTA-AM (Figure
127 4A). After LPS stimulation for 6 and 12 hours respectively, the intracellular ER state
128 was assessed by western blotting analysis. We found that p-IRE1 α and XBP1s in the
129 myocytes of pre-chelating-based stimulation showed a decreasing trend when
130 compared with cells stimulated by LPS directly. Furthermore, on the basis of that no
131 significant difference was detected in LPS treatment when directly compared to
132 controls, there was no apparent alteration in protein levels of GRP78 in
133 pre-chelating-based stimulation (Figure 4B).

134 **IL-33 affects the LPS-induced ER stress response in myometrium cells**

135 Since studies have indicated a crucial role of ER stress during successful
136 pregnancies as well as in the pathogenesis of preeclampsia, we decided to assess
137 whether the ER stress response also played a role in labor. As shown in Figure 5A,
138 protein expression of the ER stress-sensing molecules, p-IRE1 α and XBP1s, were
139 significantly increased in the TL and PTL groups when compared with the TNL and
140 PNL groups. However, there was no significant change in GRP78 protein expression
141 among the groups.

142 In order to verify whether the transcription levels changed, qPCR results were
143 compared those of western blotting analysis and were found to be similar (Figures 5A
144 and 5B). Q-PCR showed that the mRNA expression of GRP78 had no intergroup
145 difference. However, XBP1s mRNA expression was increased in PTL when compared
146 with PNL, but there was no difference between the TNL and TL groups. Overall,
147 these findings support the hypothesis that activation of ER stress is a potential
148 mechanism underlying labor. In order to confirm this, we stimulated primary
149 myometrial cells with LPS and induced the ER stress response without altering
150 GRP78 protein levels. We found that the expression levels of p-IRE1 α and XBP1s
151 reached their peaks at 1 hour and 30 minutes, then decreased to almost the basal levels
152 at 6 hours and 12 hours, respectively (Figure 5C). We next suppressed its expression
153 with IL-33 siRNA in these cells and found that IL-33 knockdown heightened the
154 LPS-induced ER stress response. This is shown in Figure 5D and in contrast to the
155 LPS group, XBP1s and phosphorylated IRE1 α protein levels were increased in the

156 IL-33 siRNA group.

157 **IL-33 siRNA and ER stress response regulate COX-2 expression in myometrium**
158 **cells**

159 In order to study whether IL-33 has a direct impact on expression of COX-2, we
160 introduced IL-33 siRNA into primary myometrial cells and treated them with LPS for
161 12 hours. COX-2 was up-regulated of in the IL-33 siRNA group (Figure 6A). The
162 previous results showed that a milder ER stress response occurred with the onset of
163 labor and could be modulated by cytoplasmic calcium levels. To define the possible
164 effect of the ER stress during the labor, the IRE1 inhibitor, 4 μ 8c, was used to block
165 the LPS-induced ER stress response. Western blots were conducted to examine
166 whether the expression of COX-2 could be inhibited. The result demonstrated that
167 4 μ 8C inhibited the expression of COX-2 markedly (Figure 6B).

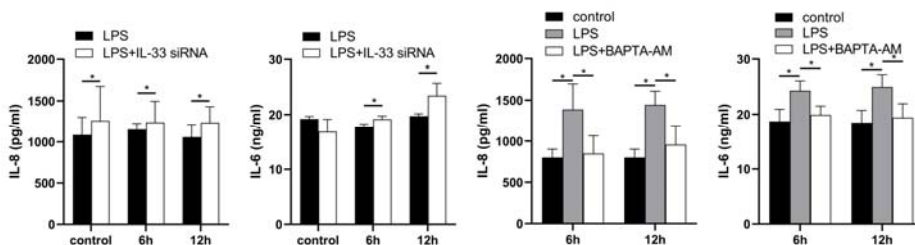
168 **IL-33 affects COX-2 expression via p38/MAPK and NF- κ B signaling pathways**

169 We also found the expression of phosphorylation of p38 and NF- κ B increased
170 significantly when LPS caused an induction of COX-2 expression, and these peaked
171 at 30 minutes (Figure 7A). Based on above observations, we wondered whether IL-33
172 was involved in these signaling pathways, thereby affecting the expression of COX-2.
173 Based on the knockdown experiments targeting IL-33 which showed that when
174 siRNA-based LPS stimulation lasted for 1 hour, the protein levels of NF- κ B
175 phosphorylation were significantly increased compared to that of the group without
176 IL-33 knockout. However, the phosphorylation of p38 was not significantly different
177 within 30 minutes of LPS stimulus but elevated sharply when the stimulus lasted for

178 30 minutes (Figure 7B). In addition, p38/MAPK and NF- κ B signaling pathway
179 inhibitors, SB-202190 and JSH-23 respectively, were added before LPS treatment,
180 and western blotting analysis showed that COX-2 expression was significantly
181 reduced (Figure 7C).

182 **IL-33 siRNA and cytoplasmic calcium influence the expression of IL-8 and IL-6** 183 **secreted by myometrium cells**

184 The expression levels of IL-8 and IL-6 in the supernatants of the LPS treated cells
185 were increased when compared with the controls. In addition, in comparison with the
186 LPS group, more IL-8 and IL-6 were released into the cell supernatants after IL-33
187 siRNA transfection and partial binding of cytoplasmic calcium ions (Figure 8).



188

189 **Discussion**

190 Although the specific mechanism of premature delivery is still unclear,
191 inflammation is currently recognized as one of the major causes of this
192 phenomenon^[12, 13]. The current understanding of this process is that as the
193 myometrium switches from a quiescent to a contractile state, it also undergoes a shift
194 in signaling from anti-inflammatory to pro-inflammatory pathways^[14, 15]. As an
195 inflammatory factor, IL-33 has many similar effects to IL-1 β . IL-33 is composed of a
196 N-terminal nuclear domain and a C-terminal IL-1-like cytokine domain which is
197 mainly localized in the nucleus and binds to histones and chromatin^[16]. It proposed

198 that IL-33 plays a dual role, playing a pro-inflammatory role as an inflammatory
199 cytokine outside the cell and participating in the regulation of transcription as a
200 nuclear factor^[17].

201 Numerous studies have shown that IL-33 had an essential role in
202 pregnancy-related diseases such as recurrent abortion and preeclampsia^[18, 19]. In early
203 pregnancy, IL-33 can increase the proliferation and invasion of the decidua, and
204 decidual macrophage-derived IL-33 is a key factor for placental growth, and its
205 deletion can lead to adverse pregnancy outcomes^[20, 21]. Similarly, IL-33 expression is
206 reduced in the placenta of preeclampsia patients, which affects placental function by
207 reducing the proliferation, migration and invasion of trophoblast cells^[22, 23]. In
208 preliminary experiments, we found that IL-33 was expressed in the nuclei of
209 myometrium cells in the third trimester of pregnancy and the levels decrease
210 following the onset of the labor. This was consistent with a previous study which
211 showed that IL-33, a mucosal alarmin, was being sequestered in the nucleus in order
212 to limit its pro-inflammatory potential. It was released as a warning signal when tissue
213 was damaged following stress or infection such as its release from the nucleus during
214 asthma attack^[9, 24].

215 In order to identify factors that are important in driving PTL progression, we
216 utilized LPS to stimulate primary cultures of uterine smooth muscle cells to mimic
217 inflammation during labor. This resulted in a rapid decrease of IL-33 in the nucleus
218 after LPS treatment which was ameliorated after the stimulus duration was lengthened.
219 It is well known that labor is a physiological process and will not cause a maternal

220 pathological state, so we hypothesized that the recruitment of IL-33 may be to
221 maintain cell homeostasis and enable its normal function. In order to explore the
222 potential effect of nuclear IL-33 during labor, we knocked down IL-33 in primary
223 myometrial cells before LPS stimulation. Initially, we found that after introduction of
224 siRNA IL-33, the intracellular calcium ion levels and the expression of T-type calcium
225 channel proteins (Cav3.1 and Cav3.2) on the membrane increased sharply. This was
226 consistent with other studies which showed that IL-33 can affect calcium elevation
227 autonomously or it can cooperate with other mediators to achieve this effect, although
228 the specific mechanism is still unclear^[25].

229 Myometrial contractions are mainly regulated by intracellular Ca^{2+} levels and
230 calmodulin and the effect of IL-33 on calcium elevation is likely to be a direct effect
231 upon myometrial tissues^[26]. However, we found that reduced IL-33 in the nucleus
232 promoted the release of pro-inflammatory cytokines such as IL-8 and IL-6 in
233 myometrial cells, while the expression of pro-inflammatory cytokines was reduced
234 after Ca^{2+} binding in the cytoplasm. This led us to conclude that IL-33 does play a
235 certain role in the process of parturition. Intracellular calcium was closely linked to
236 the ER stress response. It is well documented that when tissues and cells are
237 irretrievably stimulated or damaged, the ER stress response occurs to maintain cell
238 homeostasis. The ER which is the main intracellular calcium storage chamber, plays a
239 vital impact on maintaining Ca^{2+} homeostasis in various organelles, and homeostasis
240 of the ER is closely related to intracellular Ca^{2+} concentration^[27].

241 Researchers recently found that LPS stimulation of uterine explants could cause

242 an ER stress response in uterine muscle. This led them to hypothesized that
243 dysregulation of ER homeostasis in uterine smooth muscle might be one of the
244 mechanisms of LPS induced inflammatory preterm delivery^[28]. When compared with
245 non-laboring specimens, the levels of GRP78, IRE1 and XBP1s in fetal membranes
246 and myometrium were elevated in both TL and PTL^[29]. Consistently, the expression
247 of the ER stress response in the uterine smooth muscle was increased during labor
248 when compared to non-labor tissues. Here, we found that, although there was no
249 obvious change in GRP78, knock down of IL-33 increased the expression of IRE1 α
250 and XBP1s significantly. As a chaperone protein in the ER, GRP78 binds to three
251 prominent ER stress proteins under steady state conditions. These are PERK,
252 ATF6 related to redox reaction and the Golgi apparatus, respectively. An additional
253 protein, IRE1 α , is also involved and it is related to inflammatory signals and repairing
254 protein mis-folding^[30, 31]. During the adaptive phase of the ER stress response, the
255 IRE1 α -XBP1s pathway is activated.

256 To explore the potential mechanism of how IL-33 is involved in the process of
257 labor, we transfected siRNA IL-33 into primary myometrial cells, and the decrease in
258 nuclear IL-33 prompted the increase of COX-2 expression after LPS stimulation.
259 However, after IL-33 was knocked out, the stimulating effect of LPS on COX-2
260 which could be blocked by calcium chelating agents was more obvious. Furthermore,
261 we explored whether the modest ER stress response seen relates to the process of
262 labor. We found that the expression of COX-2 was sharply decreased by loading the
263 primary cells with an ER stress response blocker which is similar with research results

264 seen with modulation of pain by leukocytes^[32].

265 Based on the above findings, we speculated that IL-33 could influence COX-2
266 expression via two pathways: 1) it directly prevented excessive COX-2 expression in
267 myometrial cells after LPS stimulation and 2) it influenced COX-2 expression by
268 maintaining the severity of ER stress response. The binding of IL-33 to NF- κ B in the
269 nucleus could block NF- κ B signaling and inhibit the transduction of downstream
270 associated inflammatory signals^[33]. Consistent with previous studies^[34],
271 phosphorylation of NF- κ B by LPS treatment was increased after IL-33 knockdown in
272 myometrial cells. Also, we found that a change of the p38/MAPK signaling pathway
273 was consistent with that of the NF- κ B signaling pathway. In addition, selective
274 blocking of NF- κ B and p38/MAPK signaling pathways significantly inhibited the
275 expression of COX-2. Therefore, we hypothesized that NF- κ B and p38/MAPK
276 signaling pathways may be the potential downstream pathways of IL-33 affecting
277 LPS-induced COX-2 production (Figure 9).

278

279 To summarize, we found that the nuclear factor, IL-33, can affect contraction of
280 uterine muscle cells so as to participate in parturition by regulating intracellular
281 calcium ion and thus influencing the ER stress. Our study demonstrates that nuclear
282 IL-33 in the myometrium participates in maintaining a uterine quiescent state at the
283 tissue-to-cellular level during late pregnancy. Further studies on whether IL-33 is
284 involved in the redox reaction of mitochondria as well as regulation of intracellular
285 calcium ions caused by ER stress are necessary.

286 **Materials and Methods**

287 **Ethics**

288 The subjects of the study were cesarean section patients in the Obstetrics
289 Department of the First Affiliated Hospital of Nanjing Medical University. These
290 included only cesarean section patients without obstetric complications, such as
291 breeched pregnancies, mothers with scarred uteruses and giant babies. All patients
292 signed an informed consent form. The study was approved by the Ethics Committee
293 of the First Affiliated Hospital of Nanjing Medical University, China, and complies
294 with the Declaration of Principles of Helsinki.

295 **Specimen collection**

296 Patients were separated into 4 groups: term labor (TL), preterm labor (PTL), term
297 non-labor (TNL) and preterm non-labor (PNL) groups. When undergoing cesarean
298 section, a sample of the uterine smooth muscle ($1.0 \times 1.0 \times 1.0 \text{cm}^3$) was cut from the
299 site of incision at the lower and upper edge of the uterus. The muscle was washed 3
300 times in pre-cooled PBS to remove excess blood, quickly frozen in liquid nitrogen,
301 and stored at -80°C . In some cases, similar sized samples were stored in cold PBS and
302 used for culture of myometrial smooth muscle cells.

303 **Western blotting**

304 Proteins were extracted from human primary myometrium cells and human
305 uterine smooth muscle tissues. Proteins were separated by using 8% or 10% sodium
306 dodecyl sulfate polyacrylamide gel electrophoresis and transferred to polyvinylidene
307 fluoride membranes (IPVH00010, Mreck Millipore). Nonspecific binding sites were

308 blocked by incubation with 5% non-fat milk for 2 hours. Membranes were then
309 incubated with specific antibodies overnight at 4°C and washed 3 times with
310 phosphate-buffered saline with Tween-20 (PBST) and then incubated with infrared
311 dye-labeled secondary antibodies for 2 hours at room temperature.

312 After further washes with PBST, membranes were visualized using a Bio-Rad gel
313 imager and the results were normalized to β -actin or GAPDH protein and expressed in
314 arbitrary units. The antibodies used were: anti-IL-33 antibody (1:1000, ab54385,
315 Abcam); anti-p-IRE1 α antibody (1:1000, ab124945, Abcam) ; anti-XBP1s antibody
316 (1:1000, 83418, Cell Signaling Technology); anti-GRP78 antibody (1:1000,
317 11587-1-AP, Proteintech); anti-COX-2 antibody (1:1000, ab179800, Abcam); anti-p38
318 antibody (1:1000, D13E1, 8690, Cell Signaling Technology); anti-NF- κ B antibody
319 (1:1000, D14E12, 8242, Cell Signaling Technology); anti-phospho-p38 antibody
320 (1:1000, D3F9, 4511, Cell Signaling Technology); anti-phospho-NF- κ B antibody
321 (1:1000, 93H1, 3033, Cell Signaling Technology); anti-Cav 3.1 antibody (1:2000,
322 DF10014, Affinity) and anti-Cav 3.2 antibody (1:500, sc-377510, Santa Cruz
323 Biotechnology).

324 **Immunohistochemistry**

325 The fixed paraffin-embedded sections of human myometrium were rehydrated in
326 a graded series of decreasing alcohol concentrations. Sections were incubated in 3%
327 hydrogen peroxide for 30 minutes to block endogenous peroxidase and 2% normal
328 goat serum for 1 hour to reduce nonspecific binding. Then samples were incubated
329 overnight at 4°C with goat anti-human IL-33 monoclonal antibody (MAB36253, R&D)

330 at a concentration of 0.1 µg/mL and then 1-3 drops of biotinylated secondary
331 antibodies for 2 hours at room temperature. 1-5 drops of DAB chromogen solution
332 were added to cover the entire tissue section and incubated for 10 minutes. The
333 sections were rinsed in deionized H₂O and the slides were drained and the stained
334 tissue was covered with a coverslip of an appropriate size. These were then visualized
335 under a microscope using a bright-field illumination.

336 **Real-time quantitative PCR (qPCR)**

337 Total RNA was isolated using Trizol reagent (SN114, NanJing SunShine
338 Biotechnology). The RNA was reverse transcribed to cDNA using a cDNA first strand
339 synthesis kit (D6110A, Takara Bio), according to the manufacturer's instructions. The
340 upstream and downstream primer sequences used are shown in Supplemental Table 1.
341 Quantitative, real-time PCR was then conducted with SsfastTMEvaGreen Supermix
342 (172-5201AP, BIO-RAD) in a BioRad CFX96 Touch Real-Time PCR. The relative
343 abundance of mRNA in myometrium was normalized to that of β-actin using the
344 comparative cycle threshold method ($2^{-\Delta\Delta CT}$).

345 **Immunofluorescence**

346 Tissue sections and cells were fixed with 4% paraformaldehyde in PBS for 30
347 minutes at room temperature, washed three times with PBS and repaired with 75%
348 glycine for 10 minutes. Then they permeabilized with 0.5% Triton X-100 in PBS for
349 30 minutes, and then washed three times with PBS and blocked with 3% bovine
350 serum albumin (BSA, sh30087.02, HyClone) in PBS for 1 hour. These operations
351 were conducted at room temperature. Primary antibody incubation was performed

352 overnight at 4°C with goat monoclonal anti-IL-33 (1:200, MAB36253, R&D) diluted
353 in 0.2% BSA in PBS. For detection, the tissues were incubated for 2 hours at room
354 temperature with Alexa Flour 594 secondary antibody (1:500, A32758, Life
355 Technologies) which was diluted in 0.2% BSA in PBS. The samples were washed as
356 described above, mounted using Antifade Mounting Medium with DAPI (P0131,
357 Beyotime Biotechnology) and analyzed using a confocal fluorescence microscope
358 (LSM 800, Zeiss).

359 **Human myometrium cell culture**

360 The full-thickness uterus was obtained from women undergoing a scheduled term
361 (≥ 37 weeks of gestation) cesarean section delivery. Patients who lacked signs of
362 infection or known pregnancy complications and were clinically defined as not in
363 labor on the basis of intact membranes, a closed cervix and a quiescent uterus. After
364 delivery of the placenta, samples of myometrium (1cm^3) were excised from the upper
365 incisional margin of the lower uterine segment and immediately washed in ice-cold
366 PBS. Myometrium was carefully minced into small pieces of about 1 mm^3 ,
367 subsequently washed and incubated with gentle agitation for 40 min, at 37 °C, with
368 collagenase IA (C9891, Sigma-Aldrich) and collagenase XI (C7657, Sigma-Aldrich)
369 each at 0.5 mg/mL in DMEM/F-12 media (A4192001, Gibco) supplemented with
370 BSA (sh30087.02, HyClone) at 1 mg/mL. The dispersed cells were separated from
371 non-digested tissue by filtration through a cell strainer ($70\text{ }\mu\text{m}$, 431751, Corning) and
372 collected by centrifugation of the filtrate at 3000 rpm for 5 minutes at room
373 temperature. The cells were suspended in DMEM/F-12 media supplemented with

374 10% FBS (10270-106, Gibco) and 1% penicillin/streptomycin/amphotericin B
375 (15240062, Gibco). Cells were then dispersed in 12.5cm² plastic culture flasks (12631,
376 JETBIOFIL) or on glass coverslips into 12-well plates (7516, JETBIOFIL). Culture
377 medium was changed every 48 hours. Cells were maintained at 37 °C in a humidified
378 atmosphere (5 % CO₂ in air) until they were semi-confluent (usually 9 days after
379 plating) when the cells were detached using 0.25 % trypsin-EDTA (15050065, Gibco).
380 Experiments were performed using cells between passages 1 and 4. Culture media
381 were collected after incubations and protein concentration of multiple secreted
382 cytokines was analyzed by ELISA.

383 **Cell interference**

384 To elucidate the involvement of IL-33 in the regulation of uterine contractions
385 during delivery, knockdown experiments were performed in myometrium cells. After
386 starving the cells for 2 hours in serum-free medium, a Lipofectamine 2000 (11668027,
387 Thermo Fisher Scientific) and siRNA IL-33 (Gene Pharma) mixture was added
388 according to the manufacturer's instructions. After incubation in the incubator for 6
389 hours, the medium was replaced for a further 48 hours and the efficiency of siRNA
390 transfection was measured by western blotting analysis.

391 **Medicine loading**

392 Some cells were incubated with lipopolysaccharides (LPS L8880, Solarbio). 10
393 µg/mL of LPS was added to treat the cells for 5, 10, 15 and 30 minutes as well as 1, 3,
394 6, 9, 12, 18 and 24h respectively whereas the untreated uterine smooth muscle cells
395 were used as a control group.

396 4 μ 8C (80 μ M, HY-19707, Master of Small Molecules) was used to blocked ER
397 stress and BAPTA-AM (25 μ g of MAB120503, Abcam), a membrane-permeable
398 calcium ion chelator was used to block the action of cytoplasmic calcium in the cells.
399 These were added to the cells 1 hour before LPS treatment.

400 **Enzyme-linked immunosorbent assays (ELISA)**

401 Sandwich ELISA were used to determine the cytokine concentrations in culture
402 media following various treatments. ELISA kits for human IL-6 and IL-8 were
403 purchased from MEIMIAN (MM-0049H1 and MM-1558H1, respectively). Culture
404 media were diluted 1:5 for IL-6 and IL-8 determinations using diluent solutions
405 supplied by the manufacturer to ensure the absorbance reading would remain within
406 the range of the standard curve. Absorbance readings were conducted using
407 μ QuantTM software (128C-400, BioTek[®] Instruments) according to the
408 manufacturer's instructions.

409 **Statistical analysis**

410 The data are presented as mean percentages of control \pm SD. The data from
411 western blots are presented as means \pm SEM of the ratios. Statistical analyses were
412 compared using an unpaired two-tailed Student's t test or a one-way analysis of
413 variance and Bonferroni multiple comparisons test with SPSS software (version 25.0
414 for Windows, IBM Inc, Chicago, IL, USA) and the figures were generated using
415 Graphpad Prism.

416 **Data Availability Statement**

417 All data generated or analyzed during this study are included in the manuscript
418 and supporting files.

419 **Ethics Statement**

420 This study was approved by the Ethics Committee of the First Affiliated Hospital
421 of Nanjing Medical University, China, and complies with the Declaration of
422 Principles of Helsinki.

423 **Acknowledgement**

424 The authors thank Hong Zhou for advice and technical assistance in early of this
425 work. This study was supported by grants from the National Natural Science
426 Foundation of China (Nos. 81300507).

427 **Conflict of Interest**

428 The authors declare that the research was conducted in the absence of any
429 commercial or financial relationships that could be construed as a potential conflict of
430 interest.

431 **References**

- 432 [1] Authors N J O. *Gynecology. Practice Bulletin No. 159: Management of Preterm Labor*. 2016;
433 127: e29.
- 434 [2] Romero R, S K Dey, S J J S Fisher. *Preterm labor: One syndrome, many causes*. 2014; 345: 760.
- 435 [3] Goldenberg R L, J F Culhane, J D Iams, R J L Romero. *Epidemiology and causes of preterm*
436 *birth*. 2008; 371: 75-84.
- 437 [4] Lamont R F J F i l. *Advances in the Prevention of Infection-Related Preterm Birth*. 2015; 6.
- 438 [5] Cayrol C, J P J I R Girard. *Interleukin-33 (IL-33): A nuclear cytokine from the IL-1 family*. 2018;
439 281: 154-168.
- 440 [6] Drake L Y, H J I R Kita. *IL-33: biological properties, functions, and roles in airway disease*. 2017;
441 278: 173-184.
- 442 [7] Huang B, A N Faucette, M Pawlitz, B Pei, J W Goyert, J Z Zhou, N G El-Hage, J De Ng, J Lin, F J N
443 M Yao. *Interleukin-33-induced expression of PIBF1 by decidual B cells protects against*
444 *preterm labor*. 2016; 23: 128.
- 445 [8] Bonnelykke K, P Sleiman, K Nielsen, E Kreiner-Moller, J M Mercader, D Belgrave, H T den
446 Dekker, A Husby, A Sevelsted, G Faura-Tellez, L J Mortensen, L Paternoster, R Flaaten, A
447 Molgaard, D E Smart, P F Thomsen, M A Rasmussen, S Bonas-Guarch, C Holst, E A Nohr, R
448 Yadav, M E March, T Blicher, P M Lackie, V W Jaddoe, A Simpson, J W Holloway, L Duijts, A
449 Custovic, D E Davies, D Torrents, R Gupta, M V Hollegaard, D M Hougaard, H Hakonarson, H
450 Bisgaard. *A genome-wide association study identifies CDHR3 as a susceptibility locus for early*
451 *childhood asthma with severe exacerbations*. *Nat Genet* 2014; 46: 51-5. DOI:
452 10.1038/ng.2830
- 453 [9] Kaur D, E Gomez, C Doe, R Berair, L Woodman, R Saunders, F Hollins, F R Rose, Y Amrani, R
454 May, J Kearley, A Humbles, E S Cohen, C E Brightling. *IL-33 drives airway hyper-responsiveness*
455 *through IL-13-mediated mast cell: airway smooth muscle crosstalk*. *Allergy* 2015; 70: 556-67.
456 DOI: 10.1111/all.12593
- 457 [10] Yao Y, R Chen, C Ying, G Zhang, T Rui, A Tao. *Interleukin-33 attenuates doxorubicin-induced*
458 *cardiomyocyte apoptosis through suppression of ASK1/JNK signaling pathway*. *Biochem*
459 *Biophys Res Commun* 2017; 493: 1288-1295. DOI: 10.1016/j.bbrc.2017.09.153
- 460 [11] Theoharides T C, B Zhang, D Kempuraj, M Tagen, M Vasiadi, A Angelidou, K D Alysandratos, D
461 Kalogeromitros, S Asadi, N Stavrianeas, E Peterson, S Leeman, P Conti. *IL-33 augments*
462 *substance P-induced VEGF secretion from human mast cells and is increased in psoriatic skin*.
463 *Proc Natl Acad Sci U S A* 2010; 107: 4448-53. DOI: 10.1073/pnas.1000803107
- 464 [12] Hantoushzadeh S, R Anvari Aliabad, A H Norooznejhad. *Antibiotics, Inflammation, and*
465 *Preterm Labor: A Missed Conclusion*. *J Inflamm Res* 2020; 13: 245-254. DOI:
466 10.2147/JIR.S248382
- 467 [13] Gilman-Sachs A, S Dambaeva, M D Salazar Garcia, Y Hussein, J Kwak-Kim, K Beaman.
468 *Inflammation induced preterm labor and birth*. *J Reprod Immunol* 2018; 129: 53-58. DOI:
469 10.1016/j.jri.2018.06.029
- 470 [14] Hadley E E, S Sheller-Miller, G Saade, C Salomon, S Mesiano, R N Taylor, B D Taylor, R Menon.
471 *Amnion epithelial cell-derived exosomes induce inflammatory changes in uterine cells*. *Am J*
472 *Obstet Gynecol* 2018; 219: 478 e1-478 e21. DOI: 10.1016/j.ajog.2018.08.021

- 473 [15] Shynlova O, L Nadeem, J Zhang, C Dunk.S Lye. Myometrial activation: Novel concepts
474 underlying labor. *Placenta* 2020; 92: 28-36. DOI: 10.1016/j.placenta.2020.02.005
- 475 [16] Martin N T.M U Martin. Interleukin 33 is a guardian of barriers and a local alarmin. *Nat*
476 *Immunol* 2016; 17: 122-31. DOI: 10.1038/ni.3370
- 477 [17] Carriere V, L Roussel, N Ortega, D A Lacorre, L Americh, L Aguilar, G Bouche.J P Girard. IL-33,
478 the IL-1-like cytokine ligand for ST2 receptor, is a chromatin-associated nuclear factor in vivo.
479 *Proc Natl Acad Sci U S A* 2007; 104: 282-7. DOI: 10.1073/pnas.0606854104
- 480 [18] Hu W T, L L Huang, M Q Li, L P Jin, D J Li.X Y Zhu. Decidual stromal cell-derived IL-33
481 contributes to Th2 bias and inhibits decidual NK cell cytotoxicity through NF-kappaB signaling
482 in human early pregnancy. *J Reprod Immunol* 2015; 109: 52-65. DOI:
483 10.1016/j.jri.2015.01.004
- 484 [19] Fock V, M Mairhofer, G R Otti, U Hiden, A Spittler, H Zeisler, C Fiala, M Knofler.J Pollheimer.
485 Macrophage-derived IL-33 is a critical factor for placental growth. *J Immunol* 2013; 191:
486 3734-43. DOI: 10.4049/jimmunol.1300490
- 487 [20] Sheng Y R, W T Hu, C Y Wei, L L Tang, Y K Liu, Y Y Liu, J P Qiu, D J Li.X Y Zhu. IL-33/ST2 axis
488 affects the polarization and efferocytosis of decidual macrophages in early pregnancy. *Am J*
489 *Reprod Immunol* 2018; 79: e12836. DOI: 10.1111/aji.12836
- 490 [21] Hu W T, M Q Li, W Liu, L P Jin, D J Li.X Y Zhu. IL-33 enhances proliferation and invasiveness of
491 decidual stromal cells by up-regulation of CCL2/CCR2 via NF-kappaB and ERK1/2 signaling. *Mol*
492 *Hum Reprod* 2014; 20: 358-72. DOI: 10.1093/molehr/gat094
- 493 [22] Chen H, X Zhou, T L Han, P N Baker, H Qi.H Zhang. Decreased IL-33 Production Contributes to
494 Trophoblast Cell Dysfunction in Pregnancies with Preeclampsia. *Mediators Inflamm* 2018;
495 2018: 9787239. DOI: 10.1155/2018/9787239
- 496 [23] Spaans F, B N Melgert, C Chiang, T Borghuis, P A Klok, P de Vos, H van Goor, W W Bakker.M M
497 Faas. Extracellular ATP decreases trophoblast invasion, spiral artery remodeling and immune
498 cells in the mesometrial triangle in pregnant rats. *Placenta* 2014; 35: 587-95. DOI:
499 10.1016/j.placenta.2014.05.013
- 500 [24] Pelletier L.M Savignac. Involvement of ion channels in allergy. *Curr Opin Immunol* 2018; 52:
501 60-67. DOI: 10.1016/j.coi.2018.04.006
- 502 [25] Gupta R K, K Gupta.P D Dwivedi. Pathophysiology of IL-33 and IL-17 in allergic disorders.
503 *Cytokine Growth Factor Rev* 2017; 38: 22-36. DOI: 10.1016/j.cytogfr.2017.09.005
- 504 [26] Wray S.C Prendergast. The Myometrium: From Excitation to Contractions and Labour. *Adv*
505 *Exp Med Biol* 2019; 1124: 233-263. DOI: 10.1007/978-981-13-5895-1_10
- 506 [27] Almanza A, A Carlesso, C Chintha, S Creedican, D Doultosinos, B Leuzzi, A Luis, N McCarthy, L
507 Montibeller, S More, A Papaioannou, F Puschel, M L Sassano, J Skoko, P Agostinis, J de
508 Bellerocche, L A Eriksson, S Fulda, A M Gorman, S Healy, A Kozlov, C Munoz-Pinedo, M Rehm, E
509 Chevet.A Samali. Endoplasmic reticulum stress signalling - from basic mechanisms to clinical
510 applications. *FEBS J* 2019; 286: 241-278. DOI: 10.1111/febs.14608
- 511 [28] Guzel E, S Arlier, O Guzeloglu-Kayisli, M S Tabak, T Ekiz, N Semerci, K Larsen, F Schatz, C J
512 Lockwood.U A Kayisli. Endoplasmic Reticulum Stress and Homeostasis in Reproductive
513 Physiology and Pathology. *Int J Mol Sci* 2017; 18. DOI: 10.3390/ijms18040792
- 514 [29] Liong S.M Lappas. Endoplasmic reticulum stress is increased after spontaneous labor in
515 human fetal membranes and myometrium where it regulates the expression of prolabor
516 mediators. *Biol Reprod* 2014; 91: 70. DOI: 10.1095/biolreprod.114.120741

- 517 [30] Ron D.P Walter. Signal integration in the endoplasmic reticulum unfolded protein response.
518 *Nat Rev Mol Cell Biol* 2007; 8: 519-29. DOI: 10.1038/nrm2199
- 519 [31] Oakes S A.F R Papa. The role of endoplasmic reticulum stress in human pathology. *Annu Rev*
520 *Pathol* 2015; 10: 173-94. DOI: 10.1146/annurev-pathol-012513-104649
- 521 [32] Chopra S, P Giovanelli, P A Alvarado-Vazquez, S Alonso, M Song, T A Sandoval, C S Chae, C
522 Tan, M M Fonseca, S Gutierrez, L Jimenez, K Subbaramaiah, T Iwawaki, P J Kingsley, L J
523 Marnett, A V Kossenkov, M S Crespo, A J Dannenberg, L H Glimcher, E A Romero-Sandoval.J R
524 Cubillos-Ruiz. IRE1alpha-XBP1 signaling in leukocytes controls prostaglandin biosynthesis and
525 pain. *Science* 2019; 365. DOI: 10.1126/science.aau6499
- 526 [33] Griesenauer B.S Paczesny. The ST2/IL-33 Axis in Immune Cells during Inflammatory Diseases.
527 *Front Immunol* 2017; 8: 475. DOI: 10.3389/fimmu.2017.00475
- 528 [34] Ali S, A Mohs, M Thomas, J Klare, R Ross, M L Schmitz.M U Martin. The dual function cytokine
529 IL-33 interacts with the transcription factor NF-kappaB to dampen NF-kappaB-stimulated
530 gene transcription. *J Immunol* 2011; 187: 1609-16. DOI: 10.4049/jimmunol.1003080
- 531
- 532

533 **Figure legends**

534 **Figure 1.** Nuclear localization of the IL-33 and reduced with the onset of labor. The
535 sections fixed paraffin-embedded of human myometrium were immune-stained with
536 anti-IL-33 antibody. (A) Immunohistochemistry results showed that whether in TNL
537 or PNL tissue, IL-33 mostly located in the nuclear while reduced sharply and emerged
538 in the cytoplasm with the initiation of labor as shown in figure TL and PTL.
539 Quantification of IL-33 expression within the nucleus region showed apparent
540 differences between labor and non-labor tissue (n=4). (B) The sections of human
541 myometrium were visualized by an Alexa Flour 594 secondary antibody labeled with
542 IL-33 (Red), and nuclei were stained with DAPI (Blue). Analysis of nuclei was
543 performed by confocal microscopy, fluorescence signals of IL-33 and nuclei were
544 superimposed. Immunofluorescence staining results reflected the same phenomenon.
545 (C) From Western blots, we also can see that non-labor groups had more nuclear
546 expression and less cytoplasmic expression of IL-33 compared to labor groups while
547 the total IL-33 had no obvious differences between groups. QT-PCR discovered no
548 apparent alteration in the levels of IL-33 mRNA. Each value represents the mean \pm
549 standard deviation (SD) of three independent experiments. ** P < 0.01, *** P < 0.001,
550 bar 50 μ m.

551 **Figure 2.** Dynamic changes of IL-33 position during LPS stimulation. (A)
552 Localization analysis of confocal laser scanning microscopy images of IL-33 with the
553 stimulation of 10 μ g/ml LPS, we could see that IL-33 in the nucleus declined sharply
554 compared with the control group, especially in 3 hours. However, with the longer time

555 of the LPS treatment, the expression of IL-33 commenced to rise again from 6 hours
556 and reached the peak at 12 hours. The lower panel is the percentage of cells of which
557 IL-33 expressed mainly in the nucleus (n=3). (B) After the primary cells were loaded
558 with LPS for different times, cytoplasmic and nuclear proteins were isolated. In the
559 cytoplasmic and nucleus fraction IL-33 were quantified by Western blotting, the
560 experiment was performed as described for Figure 2B. Each experiment was
561 performed at least three times while shown are representative results (n=3). From the
562 blots, we known that whether cytoplasmic or nucleus fraction IL-33 levels presented
563 the same change trend as immunofluorescence. * P < 0.05, ** P < 0.01, bar 50 μ m.

564 **Figure 3.** IL-33 silencing enhanced LPS-induced expression of calcium channels and
565 the intracellular calcium concentration. Primary myometrium cells were transfected
566 with IL-33 or non-targeting (as control) siRNAs and treated with 10 μ g/ml LPS or
567 PBS (as control) for 6 hours. (A) Immunofluorescence staining analysis performed
568 with fluo-3AM (green), nuclei were stained with DAPI (blue) (n=3). (B) Western blot
569 analysis for expression levels of Cav 3.1 and Cav 3.2 in stably transfected and
570 non-transfected myometrium cells with treatment as indicated (n=5). * P < 0.05, ** P
571 < 0.01, bar 50 μ m.

572 **Figure 4.** BAPTA-AM inhibited expression of COX-2 and ER stress response. (A)
573 Study of COX-2 protein expression with LPS treatment in the absence or presence of
574 BAPTA-AM (25 μ g/ml) (n=5). (B) The protein expression of p-IRE1 α , XBP1s and
575 GRP78 were analyzed by Western blot at 6 hours and 12 hours under LPS stimulate
576 and with or without BAPTA-AM (n=5). * P < 0.05, ** P < 0.01.

577 **Figure 5.** IL-33 silencing highlighted LPS-induced endoplasmic reticulum stress
578 response. Based on the discovery that calcium ions affected endoplasmic reticulum
579 stress, Western blot and QT-PCR were we further to explore the expression of
580 endoplasmic reticulum stress in tissues from protein and mRNA level. (A) The protein
581 levels of P-IRE1 α and XBP1s in the TL and PTL groups were higher than those in the
582 TNL and PNL groups while there was no alteration in the level of GRP78
583 protein(n=6). (B) The mRNA level of XBP1s in the PTL groups was higher than that
584 in the PNL groups (n=6). Furthermore, in order to illustrate the protein level changes
585 of endoplasmic reticulum stress during labor, LPS was used to stimulate primary
586 uterine smooth muscle cells for different time course and then Western blot was used
587 to detect the alteration of endoplasmic reticulum stress. (C) It was found that the
588 protein level of pIRE1 α reached its peak at 10 minutes while XBP1s at 15 minutes,
589 while the protein level of GRP78 did not change significantly (n=5). We also detected
590 apparent alteration in endoplasmic reticulum stress protein during cells stimulated
591 based knockdown experiments targeting IL-33. (D) It revealed that the endoplasmic
592 reticulum stress response in the siRNA-based group was more obvious compared with
593 the LPS stimulated directly especially at 30 minutes (n=5). * P < 0.05, ** P < 0.01,
594 *** P < 0.005, ****P < 0.001

595 **Figure 6.** IL-33 siRNA and ER stress response affected COX-2 expression in
596 myometrium cells. (A) In the process of studying whether IL-33 affects COX-2, we
597 found that the COX-2 expression in the siRNA-mediated group was significantly
598 increased compared with the LPS alone group (n=5). (B) Western blot analyses

599 showing protein expression of COX-2 in myometrium cells was decreased following
600 treatment with LPS for 12 hours (n=5). * P < 0.05, ** P < 0.01. Each value represents
601 the mean ± standard deviation (SD) of three independent experiments.

602 **Figure 7.** IL-33 knockdown enhanced LPS-induced NF-κB and p38/MAPK signaling
603 pathways. (A) Relative levels of p-P38, P38, p-NF-κB and NF-κB were assessed by
604 western blot analysis at the indicated time point after LPS (10 μg/ml) stimulation.
605 Phosphorylation levels of P38 and NF-κB increased gradually with LPS stimulation
606 and peaked at 15 minutes and 1 hour, respectively(n=5). (B) Western blot analysis of
607 p-P38, P38, p-NF-κB and NF-κB expression in cells transfected with siRNA targeting
608 IL-33 after treatment with LPS for 30minutes. Compared with the LPS group, the
609 protein expression of phosphorylated P38 and NF-κB were increased in the LPS +
610 siRNA IL-33 group(n=5). (C) The protein level of COX-2 was decreased when
611 SB-202190 and JSH-23 blocked p38/MAPK and NF-KB signaling pathway,
612 respectively(n=5). * P < 0.05, ** P < 0.01, *** P < 0.001.

613 **Figure 8.** IL-33 siRNA and cytoplasmic calcium influence the expression of IL-8 and
614 IL-6. Compared with the LPS group, the expression of IL-8 and IL-6 was increased in
615 the LPS+IL-33 siRNA group and decreased in the LPS+BAPTA-AM group (n=5). * P
616 < 0.05.

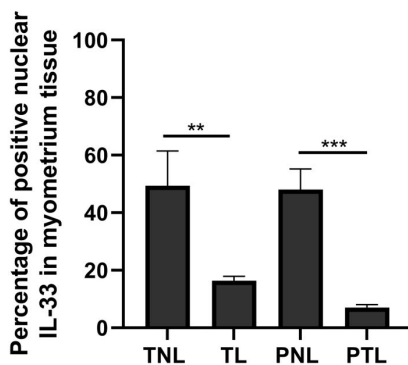
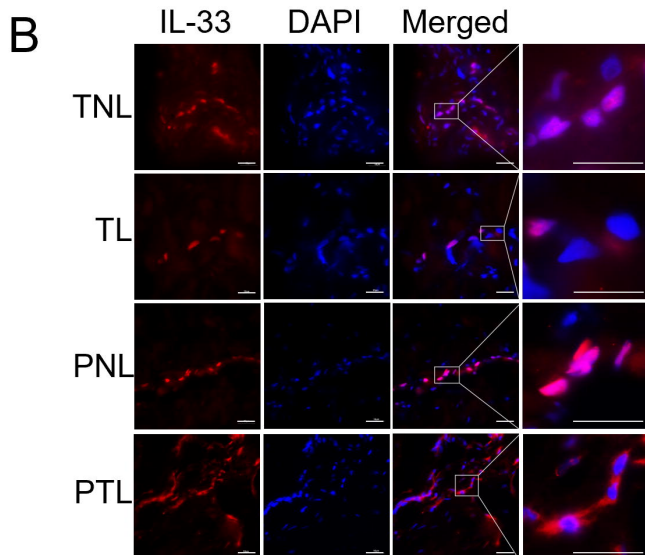
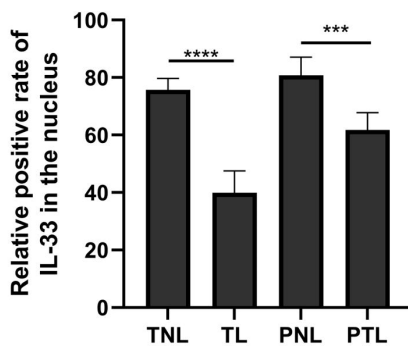
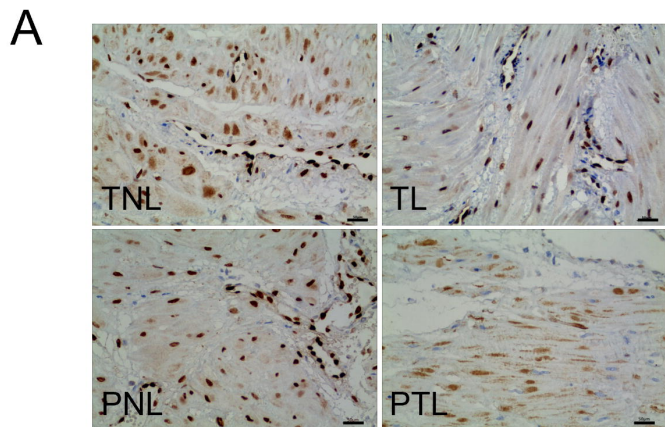
617 **Figure 9.** Model for the role of IL-33 in the myometrium participates in maintaining a
618 uterine quiescent state at the tissue-to-cellular level during late pregnancy.

619 **Table 1** (The following primers are human)

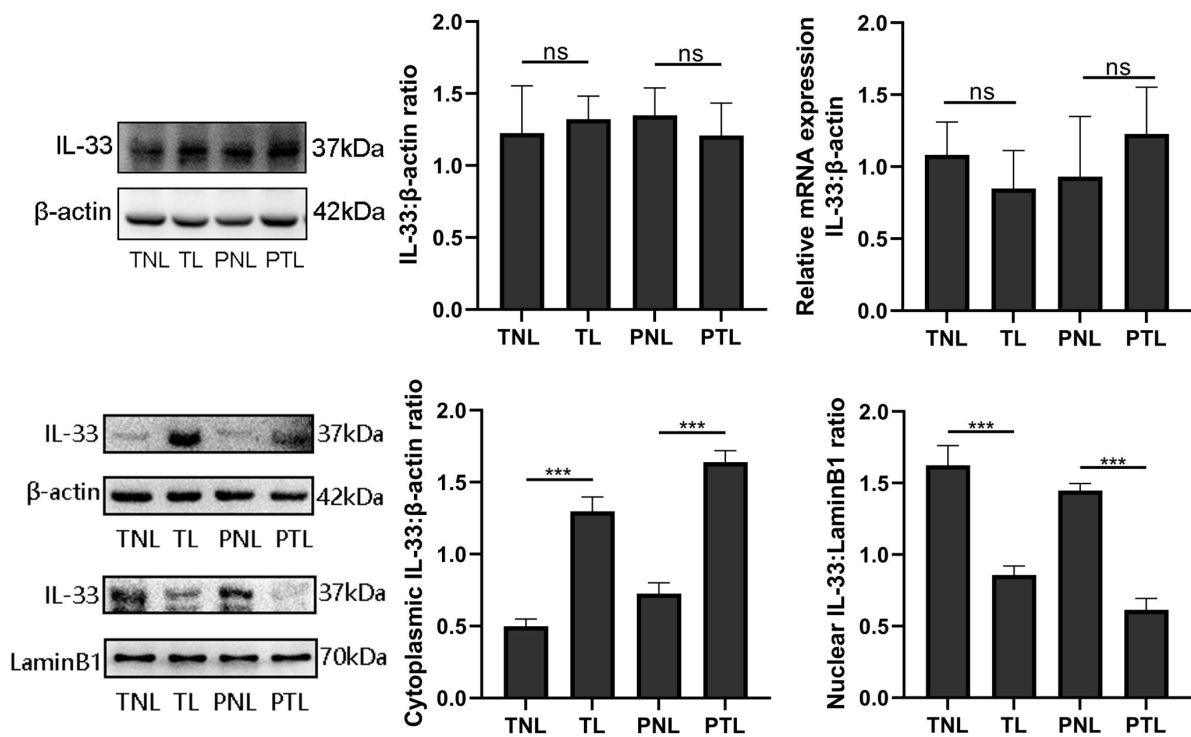
Target genes	forward primer	reverse primer
--------------	----------------	----------------

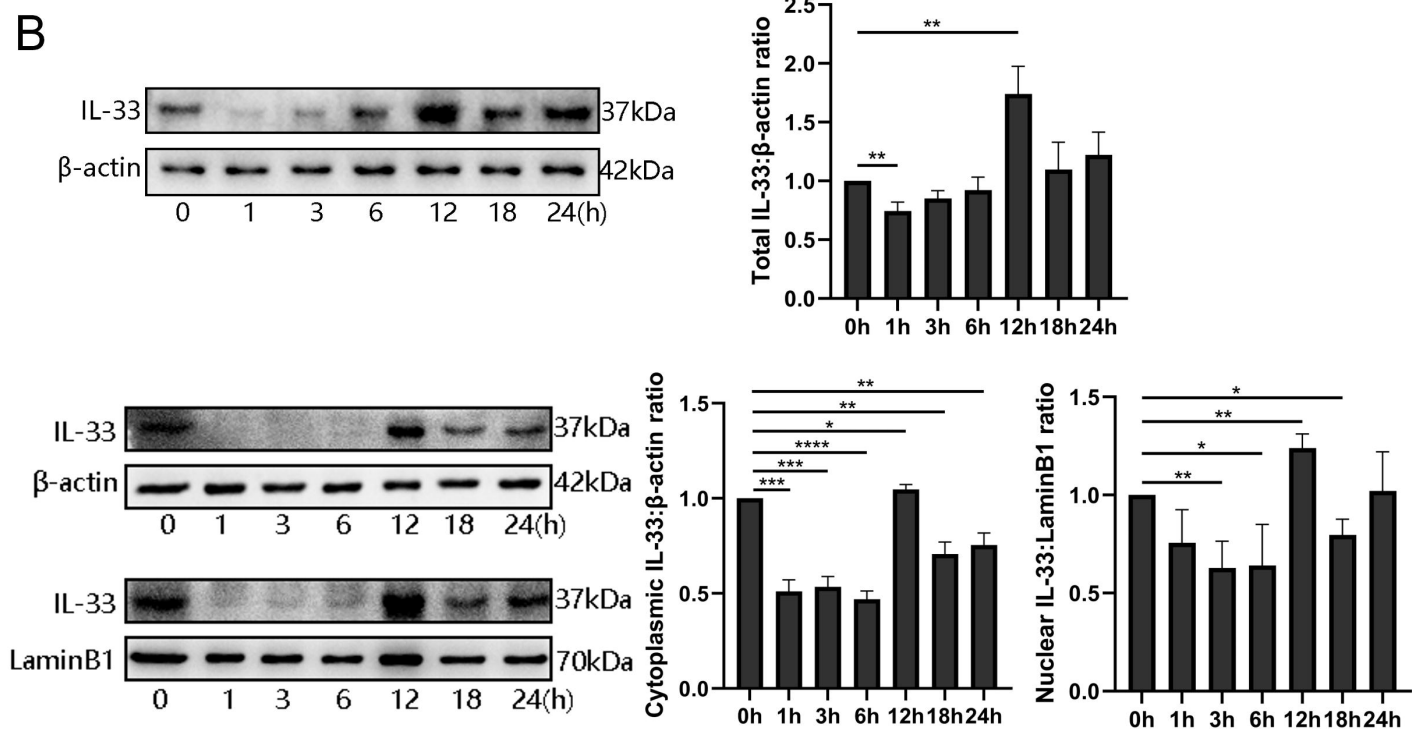
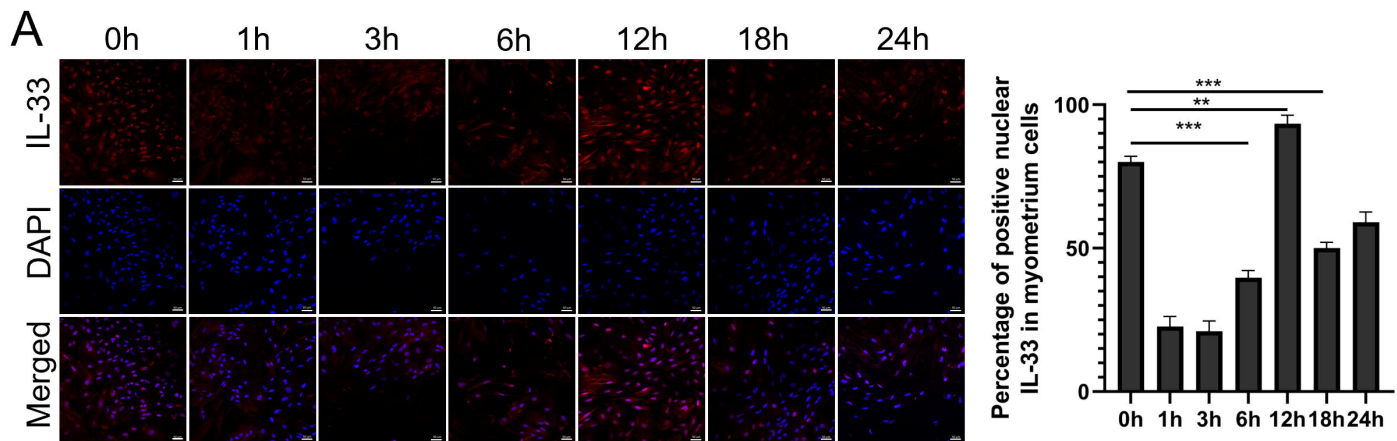
IL-33	TGCCAACAACAAGGAACACTCTG	CACTCCAGGATCAGTCTTGCATTC
XBP1s	CTGAGTCCGCAGCAGGTG	GTCCAGAATGCCCAACAGGA
GRP78	CCCGTCCAGAAAGTGTTG	CAGCACCATACGCTACAG
β -actin	CTCCATCCTGGCCTCGCTGT	GCTGTCACCTTCACCGTCC

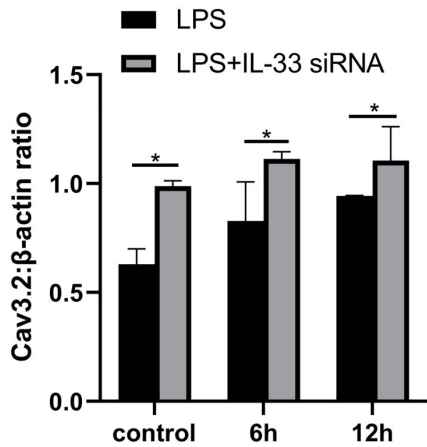
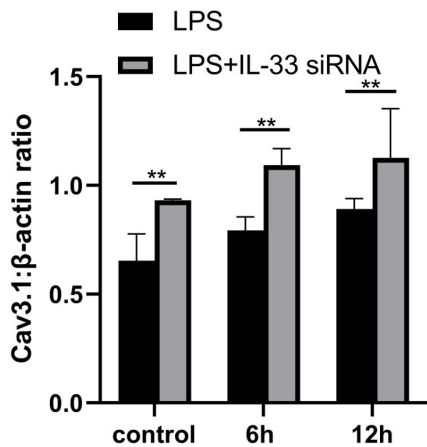
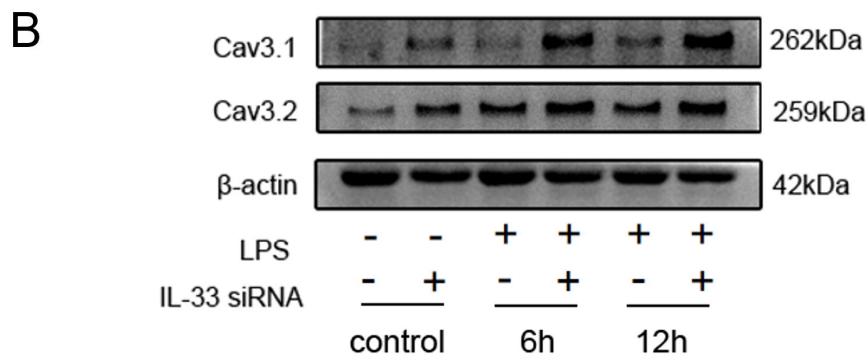
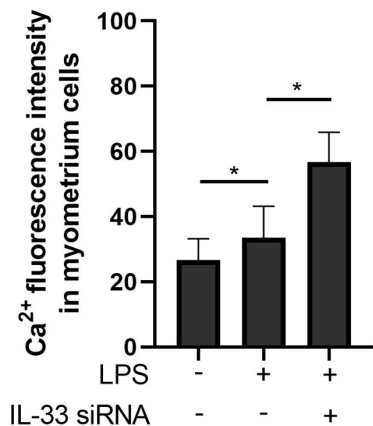
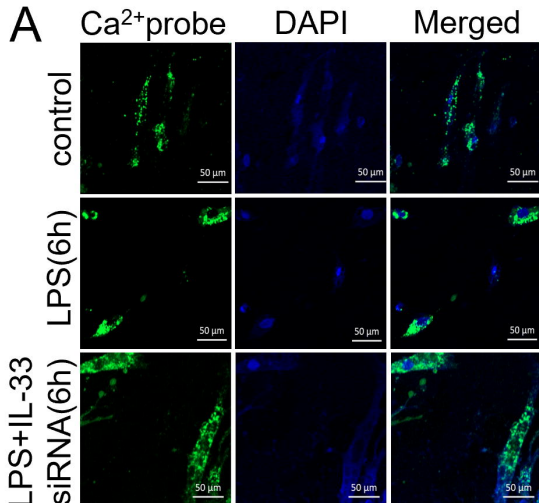
620



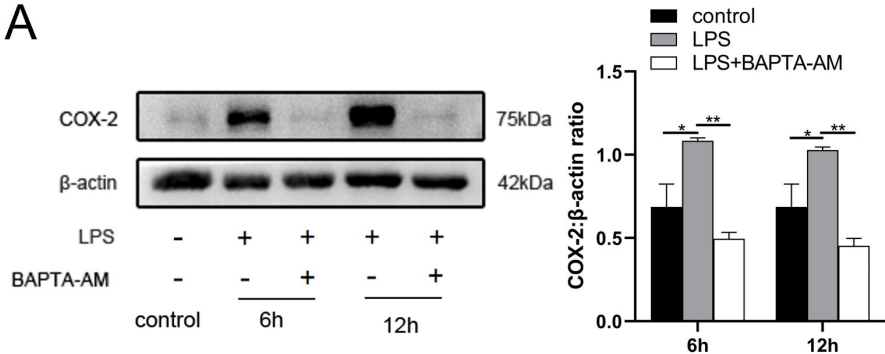
C



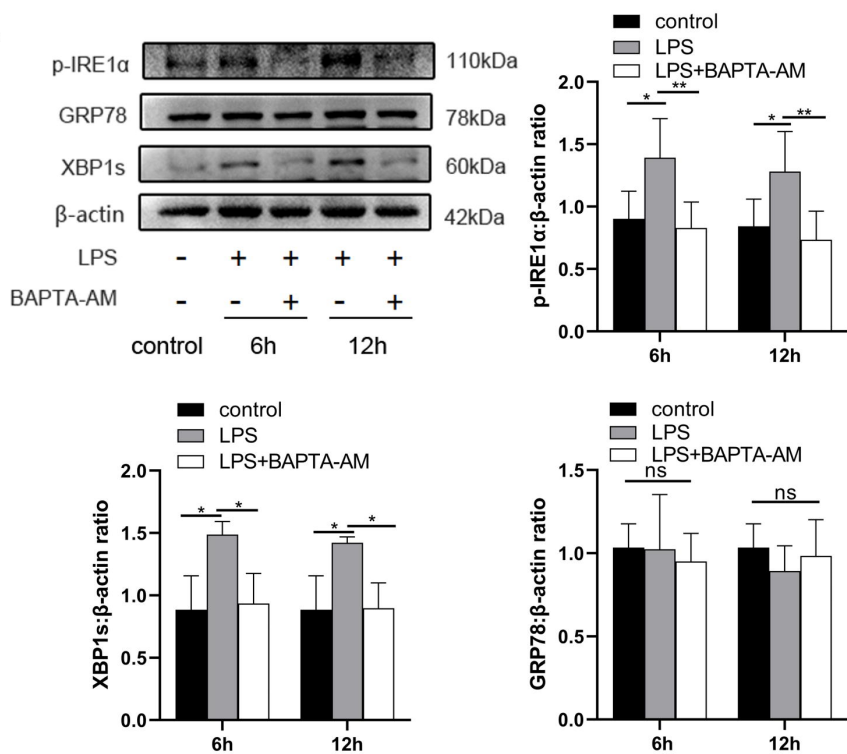


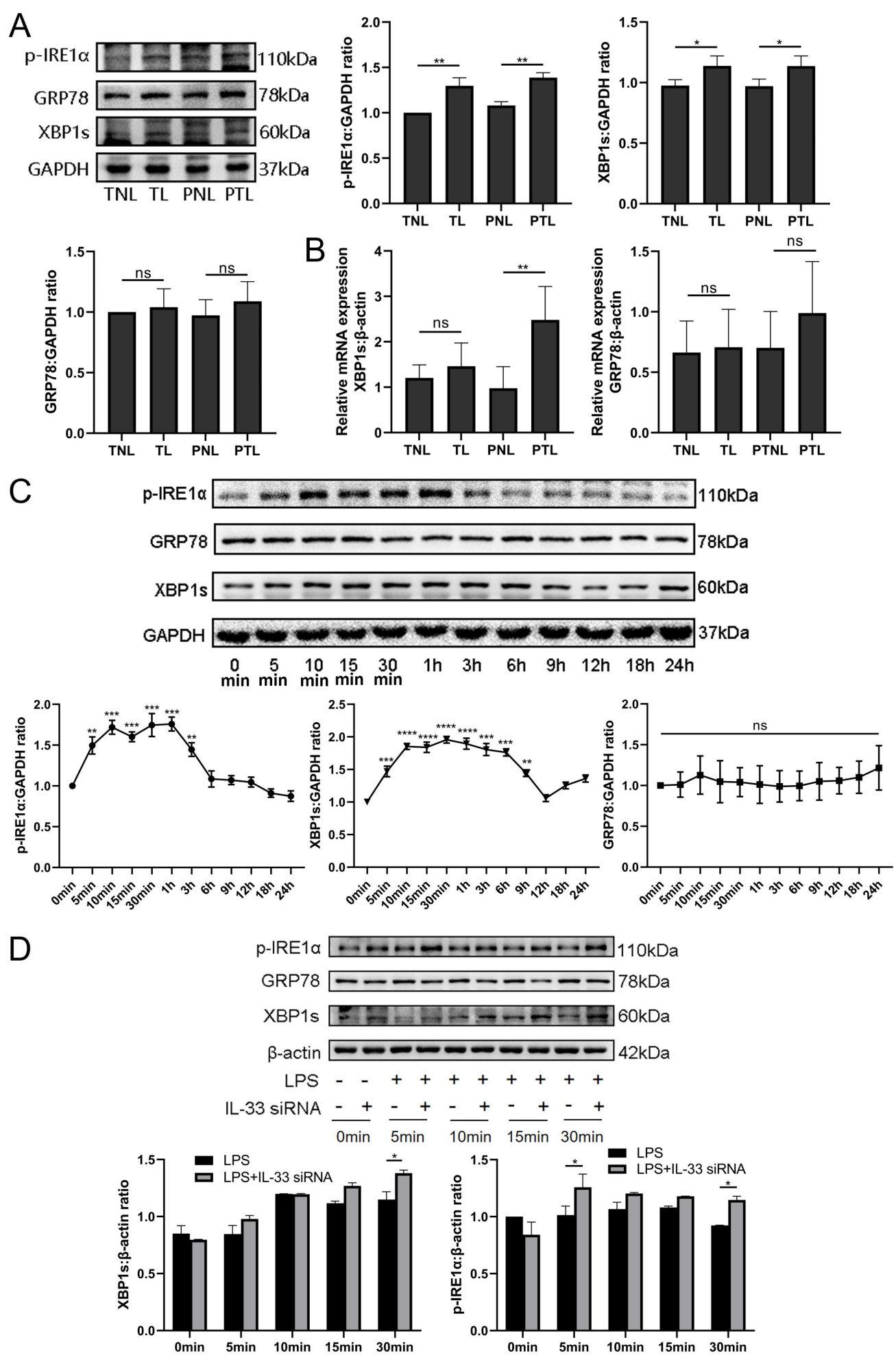


A

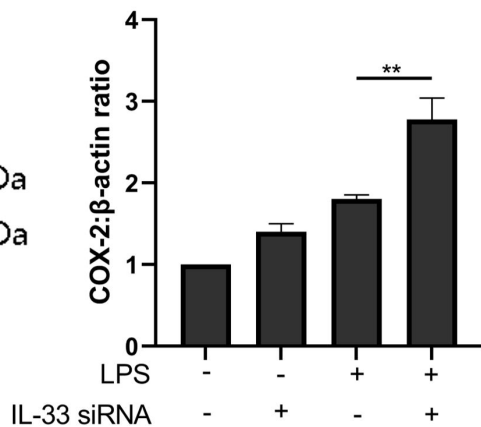
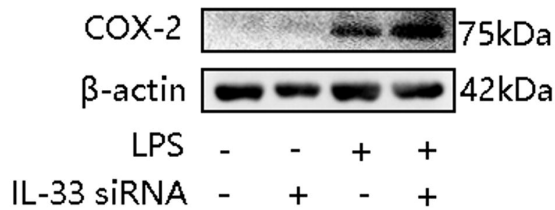


B





A



B

