

1 **Impact of SARS-CoV-2 infection on vaccine-induced immune responses over time.**

2
3 Sebastian Havervall, MD¹, Ulrika Marking, MD¹, Nina Greilert-Norin, RN¹, Max Gordon,
4 MD, PhD¹, Henry Ng, MMSc^{1,2}, Wanda Christ, MMSc³, Mia Phillipson, PhD², Peter Nilsson,
5 PhD⁴, Sophia Hober, PhD⁴, Kim Blom, PhD¹, Jonas Klingström, PhD³, Sara Mangsbo, PhD⁵,
6 Mikael Åberg[†], PhD⁶, and Charlotte Thålin*[†], MD, PhD¹

7
8
9 1. Department of Clinical Sciences, Karolinska Institutet Danderyd Hospital, Stockholm,
10 Sweden

11 2. Department of Medical Cell Biology and SciLifeLab, Uppsala University, Uppsala,
12 Sweden

13 3. Center for Infectious Medicine, Department of Medicine Huddinge, Karolinska Institutet,
14 Stockholm, Sweden

15 4. Department of Protein Science, KTH Royal Institute of Technology, SciLifeLab,
16 Stockholm, Sweden

17 5. Department of Pharmacy and SciLifeLab, Uppsala University, Uppsala, Sweden

18 6. Department of Medical Sciences, Clinical Chemistry and SciLifeLab, Uppsala University,
19 Uppsala, Sweden

20
21 * Corresponding author. Mail: charlotte.thalin@ki.se

22 † These authors contributed equally

32 **Abstract:**

33 People with previous SARS-CoV-2 infection mount potent immune responses to COVID-19
34 vaccination, but long-term effects of prior infection on these immune responses are unknown.
35 We investigated the long-term impact of prior SARS-CoV-2 infection on humoral and cellular
36 immune responses in healthcare workers receiving the mRNA BNT162b2 or the adenovirus
37 vectored ChAdOx1 nCoV-19 vaccine. Vaccination with both vaccine platforms resulted in
38 substantially enhanced T cell immune responses, antibody responses to spike and neutralizing
39 antibodies effective against ten SARS-CoV-2 variants following SARS-CoV-2 infection,
40 compared to in naïve individuals. The enhanced immune responses sustained over seven
41 months following vaccination. These findings imply that prior infection should be taken into
42 consideration when planning booster doses and design of current and future COVID-19
43 vaccine programs.

44

45 **One-Sentence Summary:** SARS-CoV-2 infection prior to vaccination leads to substantial
46 and durable increases in immune memory responses.

47

48

49 Clinical trials and post marketing effectiveness data have shown that currently used COVID-
50 19 vaccines protect strongly against hospitalization and death (1-3). However, real-world
51 efficacy estimates are affected by population demographics, characteristics of circulating
52 SARS-CoV-2 variants, vaccine protocols and time since vaccination. An increased risk of
53 breakthrough infections is now observed, partly explained by immune waning (4-8), and third
54 vaccine doses are therefore being administered. A robust immune response after infection or
55 vaccination is based on the induction of memory B and T cells generating virus specific
56 antibodies and T-cell responses (9-13). Antibody levels have been shown to correlate
57 inversely with risk of SARS-CoV-2 infection (14, 15) and may, with standardized readouts
58 (16), be used as a marker for correlates of protection. Time between prime and boost (17), the
59 number of boosters administered as well as infection prior to vaccination (18) impact the
60 breadth and duration of immune responses. As an increasing number of persons become
61 infected globally, vaccination post SARS-CoV-2 infection will become more frequent. Prior
62 SARS-CoV-2 infection has been reported to positively impact vaccine responses (9, 19-24)
63 but little is known regarding long term effects. To optimize immunization programs, it is
64 therefore of importance to study duration of immune responses including direct comparisons

65 of vaccine platforms and the long-term effect of prior SARS-CoV-2 infection on subsequent
66 vaccine-induced responses in real world evidence studies.

67
68 Using longitudinally collected blood samples from the COMMUNITY (COVID-19
69 Immunity) study (13, 24-26) we herein report binding and pseudo-neutralizing antibody titers
70 and memory T cell responses elicited over seven months following mRNA BNT162b2
71 (Comirnaty, Pfizer BioNTech) and over three months following adenovirus-vectored
72 ChAdOx1 nCoV-19 (Vaxzevria, AstraZeneca) vaccination in 517 healthcare workers (HCW)
73 with and without confirmed SARS-CoV-2 infection prior to vaccination.

74

75 **Results**

76 The COMMUNITY study enrolled 2149 HCW at Danderyd Hospital, Stockholm, Sweden,
77 between April and May 2020. Starting January 2021 all HCW at Danderyd Hospital were
78 offered vaccination with either BNT162b2 or ChAdOx1 nCoV-19, depending on availability.
79 This sub-study included a total of 517 HCW stratified into two groups depending on SARS-
80 CoV-2 infection prior to vaccination. 337 HCW received BNT162b2 with a 3-week dose
81 interval (range 21-28 days), 72 HCW received BNT162b2 with a 6-week dose interval (range
82 39-52 days) and 108 HCW received ChAdOx1 nCoV-19 with a 12-week dose interval (range
83 71-92 days). Figure 1. Demographics, prior SARS-CoV-2 infection and vaccine status of the
84 study population are presented in Table 1.

85

86 *Effect of previous SARS-CoV-2 infection on antibody responses over seven months* 87 *following BNT162b2 vaccination*

88 Almost all (99.8%) participants had detectable levels of spike IgG antibodies after
89 vaccination. Notably, at all sampling time points, spike IgG GMTs were markedly higher in
90 previously SARS-CoV-2 infected vaccinees compared to SARS-CoV-2 naïve vaccinees (all
91 $p < 0.001$). Table 2 and Figure 2A. A 2-fold decrease of spike IgG GMTs between week 6 and
92 12, and a 6.6-fold decrease between week 6 and 29, were observed in SARS-CoV-2 naïve
93 BNT162b2 vaccinees. For vaccinees with SARS-CoV-2 infection prior to vaccination, a 1.5-
94 fold decrease of GMTs was observed between week 6 and 12, and a 3.6-fold decrease was
95 observed between week 6 and 29 post vaccination.

96

97 Spike IgG titers correlated strongly to pseudo-neutralizing antibody titers against both the WT
98 and the Delta variant (Spearman's rank correlation coefficient 0.92, and 0.83, respectively,

99 both $p < 0.0001$). Consistent with spike IgG, substantially higher GMTs of pseudo-neutralizing
100 antibodies were observed in SARS-CoV-2 recovered vaccinees, as compared to SARS-CoV-2
101 naïve vaccinees, at all sampling time points (all $p < 0.001$). Table 2 and Figure 2 B-C. Among
102 SARS-CoV-2 naïve vaccinees, GMTs of pseudo-neutralizing antibodies against the WT and
103 Delta variant decreased by 1.8-fold and 2.6-fold between week 6 and 12, and by 3.3-fold and
104 4.6-fold between week 6 and 29, respectively. For SARS-CoV-2 recovered vaccinees, GMTs
105 of pseudo-neutralizing antibodies against the WT and Delta variant decreased by 2.3-fold and
106 2.1-fold between weeks 6 and 12, and by 5.1-fold and 3.6-fold between weeks 6 and 29,
107 respectively. Table 2 and Figure 2B-C. Notably, pseudo-neutralizing GMTs against the Delta
108 variant reached similar trajectories as pseudo-neutralizing GMTs against the WT, indicating a
109 similar trend in response for the currently circulating Delta variant as for the initially
110 circulating WT. Table 2 and Figure 2B-C.

111

112 ***Effect of BNT162b2 dose interval on antibody levels***

113 It has been reported that a longer interval between BNT162b2 doses can result in higher
114 antibody titers (27). In this cohort, BNT162b2 vaccinees were administered with a 3–4-week
115 dose interval in January to February 2021, and with a prolonged dose interval of 6-8 weeks in
116 April to July 2021, allowing for a comparison in immune responses in these two groups.

117

118 12 weeks post second dose, there were no significant differences in spike IgG GMTs
119 following BNT162b2 with the 3-4 week and the 6–8-week dose interval, regardless of prior
120 SARS-CoV-2 infection (all $p > 0.05$). Table 2. Pseudo-neutralizing antibody GMTs against
121 both the WT and Delta variant were, however, slightly but significantly increased 12 weeks
122 following second dose after the prolonged dose interval ($p = 0.016$ and $p = 0.017$, respectively)
123 in SARS-CoV-2 naïve vaccinees when adjusted for sex and age. A similar trend was seen in
124 SARS-CoV-2 recovered vaccinees, although the differences were not significant (all $p > 0.05$).
125 Table 2.

126

127 ***Effect of previous SARS-CoV-2 infection on antibody responses over three months*** 128 ***following ChAdOx1 nCoV-19 vaccination***

129 We next analysed the effect of previous SARS-CoV-2 infection on immune responses after
130 vaccination with the ChAdOx1 nCoV-19 vaccine. At 12 weeks post vaccination, spike IgG
131 GMTs in SARS-CoV-2 naïve ChAdOx1 nCoV-19 vaccinees were 4.5-fold lower compared to
132 SARS-CoV-2 naïve BNT162b2 vaccinees ($p < 0.001$). As observed after BNT162b2

133 vaccination, spike IgG GMTs were substantially increased in SARS-CoV-2 recovered
134 ChAdOx1 nCoV-19 vaccinees compared to in SARS-CoV-2 naïve vaccinees at all sampling
135 time points (all $p < 0.001$). Table 2 and Figure 2A-C. In SARS-CoV-2 naïve vaccinees, spike
136 IgG GMTs declined 1.9-fold between week 3 and 14 post vaccination, whereas it declined
137 2.3-fold between week 3 and 14 post vaccination in SARS-CoV-2 recovered vaccinees. Table
138 2 and Figure 2 A-C.

139
140 Consistent with results for binding antibodies, substantially higher GMTs of pseudo-
141 neutralizing antibodies were observed in SARS-CoV-2 recovered ChAdOx1 nCoV-19
142 vaccinees compared to in SARS-CoV-2 naïve vaccinees at all sampling time points (all
143 $p < 0.001$). Table 2 and Figure 2 B-C. In SARS-CoV-2 naïve vaccinees, GMTs against the WT
144 and Delta variant decreased by 1.4-fold and 3-fold between week 3 and 14, respectively,
145 whereas they decreased by 1.3-fold and 1.5-fold, respectively, in SARS-CoV-2 recovered
146 vaccinees. Similar to findings following BNT162b2 vaccination, GMTs against the Delta
147 variant reached comparable levels and trajectories as GMTs against the WT. Table 2 and
148 Figure 2 B-C.

149
150 ***Live-microneutralization compared to pseudo-neutralization***
151 As a slightly higher capacity to inhibit binding of the Delta variant compared to the WT was
152 found using the pseudo-neutralizing assay (Figure 2B-C), a live-neutralizing assay was
153 performed in a sub-set of 34 participants (17 SARS-CoV-2 naïve BNT162b2 vaccinees and
154 17 SARS-CoV-2 naïve ChAdOx1 nCoV-19 vaccinees). While results from these two assays
155 correlated with regard to the WT and the Delta variant ($r_s = 0.66$ and 0.63 respectively, both
156 $p < 0.0001$), the live-microneutralization assay resulted in 25.2 % lower titers against the Delta
157 variant compared to the WT.

158
159 ***Neutralization capacity against SARS-CoV-2 variants in vaccinees with and without SARS-
160 CoV-2 infection prior to vaccination***

161 In light of the substantial increases in antibody titers observed in SARS-CoV-2 recovered
162 vaccinees as compared to SARS-CoV-2 naïve vaccinees, we proceeded to determine if it also
163 had an effect on neutralizing capacity against SARS-CoV-2 variants. Pseudo-neutralizing
164 antibody titers were assessed against ten SARS-CoV-2 variants, including all variants of
165 concern (VOC) (B.1.1.7 (Alpha), B.135.1 (Beta), P.1 (Gamma) and B.1.617.2 (Delta)).
166 Notably, pseudo-neutralizing antibody titers against all ten tested SARS-CoV-2 variants were

167 at least 2 respectively 3-fold higher in SARS-CoV-2 recovered as compared to naïve
168 vaccinees following BNT162b2 and ChAdOx1 nCoV-19, respectively (all $p < 0.001$). Figure 3
169 A-C and Table S1.

170

171 ***SARS-CoV-2 specific memory T cell responses***

172 We next proceeded to investigate SARS-CoV-2 directed T cell responses in a subset of
173 SARS-CoV-2 naïve and recovered vaccinees three months post ChAdOx1 nCoV-19 as well
174 as three- and seven-months post BNT162b2. As expected, memory T-cell responses were
175 stronger in SARS-CoV-2 recovered vaccinees compared to SARS-CoV-2 naïve vaccinees.
176 We used a whole blood IGRA assay based on a pool of eight peptides derived from the spike
177 protein (peptides that do not show any evidence of overlap with common cold coronaviruses
178 and thus do not pose a risk of detecting T cell responses inflicted by a previous non-SARS-
179 CoV-related infection (13, 28). IFN- γ GMTs were more than 6-fold higher in SARS-CoV-2
180 recovered BNT162b2 vaccinees during the whole follow-up period of seven months (166.4
181 pg/ml (95% CI 98.5-281.2) and 116.8 pg/ml (95% CI 34.6-394.7) in SARS-CoV-2 recovered
182 vaccinees three- and seven-months post BNT162b2 vs. 26.8 pg/ml (95% CI 45.5-49.6) and
183 18.7 pg/ml (95% CI 9.5-36.6) in SARS-CoV-2 naïve vaccinees; $p < 0.01$). Figure 4 A-B.
184 Similar differences were found three months post ChAdOx1 nCoV-19, with a more than 4-
185 fold increase in IFN- γ geometric mean levels in SARS-CoV-2 recovered vaccinees (38.0
186 pg/ml (95% CI 20.4-70.9) in SARS-CoV-2 recovered vaccinees vs. 8.0 pg/ml (95% CI 3.5-
187 18.5) in SARS-CoV-2 naïve vaccinees; $p < 0.01$). Figure 4 C.

188

189 These findings were corroborated using a commercial T-spot assay, at seven months post
190 BNT162b2 vaccination, with a set of peptide pools that cover the S1, S2, N, and M protein.
191 With this assay we observed more than a 4-fold increased response against the S1 protein in
192 SARS-CoV-2 recovered vaccinees as compared to in SARS-CoV-2 naïve vaccinees (556
193 SFU/million cells in SARS-CoV-2 recovered vs. 135 SFU/million cells in SARS-CoV-2
194 naïve vaccinees; $p < 0.05$). Figure 4 D-G. No significant difference in response against the S2
195 protein was observed between the two groups. Notably, responses against the N and M
196 peptide pools remained enhanced in SARS-CoV-2 recovered vaccinees, implying long lasting
197 infection acquired immune responses against these proteins, but also confirming the
198 serological status prior vaccination.

199

200

201 **Discussion**

202 Using a large cohort with longitudinally collected blood samples, we show that vaccination
203 following SARS-CoV-2 infection resulted in remarkably and sustained enhancement of both
204 humoral and cellular immune responses, with an increased neutralizing potency and breadth
205 against SARS-CoV-2 variants as compared to vaccination in SARS-CoV-2 naïve individuals.
206 Furthermore, we reveal a significant decline in BAU/ml and pseudo-neutralizing antibody
207 titers over the first months following both ChAdOx1 nCoV-19 and BNT162b2 vaccination.
208 Direct comparisons showed substantially lower titers following immunization with ChAdOx1
209 nCoV-19 compared to BNT162b2. These findings are important and can be of support in the
210 decisions on booster doses and design of current and future SARS-CoV-2 vaccine programs.

211
212 We and others have previously shown that COVID-19 recovered vaccinees mount strong
213 immune responses following mRNA (9, 19-23) and adenovirus-vectored vaccines (24). We
214 here extend these findings by showing that both T-cell responses (herein measured both by a
215 traditional ELISpot assay using overlapping peptides spanning whole protein sequences as
216 well as a whole blood IGRA based method using carefully selected SARS-CoV-2 unique S-
217 derived peptides) and antibody titers remain substantially increased over three months
218 following ChAdOx1 nCoV-19 and seven months following BNT162b2 in HCW with mild
219 SARS-CoV-2 infection prior to vaccination. This suggests that the effect of a previous
220 infection followed by vaccination on immune responses is not a temporary phenomenon. The
221 memory compartment continues to evolve after both natural infection and vaccination, but
222 with a lesser increase in breadth following vaccination as compared to infection (18).
223 Importantly, we found that SARS-CoV-2 recovered vaccinees developed higher neutralizing
224 antibody responses against SARS-CoV-2 variants than SARS-CoV-2 naïve vaccinees
225 throughout the study period. These findings suggest that vaccination of immune competent
226 SARS-CoV-2 recovered individuals evokes improved cellular responses and antibody levels
227 than in SARS-CoV-2 naïve vaccinees.

228
229 Our findings of substantial reductions in antibody titers over the first three months following
230 ChAdOx1 nCoV-19 and seven months following BNT162b2 are in line with several reports
231 of waning vaccine efficacy from countries including Israel (4, 5), UK (6, 7) and the US (8).
232 The comparatively lower titers following ChAdOx1 nCoV-19 are also in line with prior data
233 on lower vaccine efficacy of adenovirus-vectored vaccines as compared to mRNA vaccines
234 (2, 29). Specific antibody levels are used as a correlate of protection against infection

235 following several established vaccines (30), and for SARS-CoV-2, binding and pseudo-
236 neutralizing antibody titers correlate inversely with the risk of infection (14, 31). Recently, an
237 80% vaccine efficacy against symptomatic SARS-CoV-2 infection was observed at 264
238 BAU/ml, declining to 60% vaccine efficacy at 54 BAU/ml (32), with similar results in
239 another study (33). Our findings suggest that antibody titers have declined below these
240 thresholds in a portion of study participants within 3-7 months from the second vaccine dose,
241 indicating a need for a third booster in a subpopulation of the vaccinated individuals
242 Importantly, the estimations were derived in eras with a dominance of the Alpha variant, and
243 the estimated titers may provide lower efficacy against infection with the Delta variant (34-
244 36), which seems to have a higher transmissibility (37, 38).

245
246 Optimal dose interval has been proposed to convey better vaccine efficacy via improved
247 memory formation (17). A longer interval may indeed generate an improved memory
248 formation, albeit at the price of a suboptimal protection during the longer interval between
249 first and second dose in SARS-CoV-2 naïve populations. Although no significant differences
250 in binding antibody titers was observed, a slight difference in pseudo-neutralization titers
251 were found between the 3-4 week and 6-8-week dose interval in SARS-CoV-2 naïve
252 participants, possibly indicating improved memory formation in the latter group (39).
253 Continued studies are needed to address potential differences in longevity of the
254 immunological memory induced by different prime boost intervals and combinations of
255 various vaccine platforms, as well as the optimal timing of additional vaccine doses.

256
257 This study is limited by the observational and single-center nature. The study cohort moreover
258 comprised HCW, and a majority of women of general working age. Antibody trajectories may
259 differ in older populations, and in settings without repeated viral encounters with potential
260 boosting of the immune memory.

261
262 In summary, the striking and sustained enhanced cellular immune responses, antibody titers
263 and neutralizing breadth in previously SARS-CoV-2 infected vaccinees as compared to
264 SARS-CoV-2 naïve vaccinees highlights the strong impact of infection prior to vaccination.
265 These findings suggest that prior SARS-CoV-2 infection should be taken into consideration in
266 vaccine policy making, when planning booster doses, and in the design of current and future
267 SARS-CoV-2 vaccine programs.

268

269 References

- 270 1. F. P. Polack *et al.*, Safety and Efficacy of the BNT162b2 mRNA Covid-19 Vaccine.
271 *New England Journal of Medicine* **383**, 2603-2615 (2020).
- 272 2. M. Voysey *et al.*, Safety and efficacy of the ChAdOx1 nCoV-19 vaccine (AZD1222)
273 against SARS-CoV-2: an interim analysis of four randomised controlled trials in
274 Brazil, South Africa, and the UK. *Lancet* **397**, 99-111 (2021).
- 275 3. S. J. Thomas *et al.*, Safety and Efficacy of the BNT162b2 mRNA Covid-19 Vaccine
276 through 6 Months. *N Engl J Med*, (2021).
- 277 4. Y. Goldberg *et al.*, Waning immunity of the BNT162b2 vaccine: A nationwide study
278 from Israel. *medRxiv*, 2021.2008.2024.21262423 (2021).
- 279 5. Y. M. Bar-On *et al.*, Protection of BNT162b2 Vaccine Booster against Covid-19 in
280 Israel. *N Engl J Med* **385**, 1393-1400 (2021).
- 281 6. K. B. Pouwels *et al.*, Impact of Delta on viral burden and vaccine effectiveness against
282 new SARS-CoV-2 infections in the UK. *medRxiv*, 2021.2008.2018.21262237 (2021).
- 283 7. M. Shrotri *et al.*, Spike-antibody waning after second dose of BNT162b2 or
284 ChAdOx1. *Lancet* **398**, 385-387 (2021).
- 285 8. S. Y. Tartof *et al.*, Effectiveness of mRNA BNT162b2 COVID-19 vaccine up to 6
286 months in a large integrated health system in the USA: a retrospective cohort study.
287 *The Lancet*.
- 288 9. R. R. Goel *et al.*, Distinct antibody and memory B cell responses in SARS-CoV-2
289 naïve and recovered individuals following mRNA vaccination. *Sci Immunol* **6**,
290 (2021).
- 291 10. A. Mazzoni *et al.*, First-dose mRNA vaccination is sufficient to reactivate
292 immunological memory to SARS-CoV-2 in subjects who have recovered from
293 COVID-19. *J Clin Invest* **131**, (2021).
- 294 11. M. M. Painter *et al.*, Rapid induction of antigen-specific CD4(+) T cells is associated
295 with coordinated humoral and cellular immunity to SARS-CoV-2 mRNA vaccination.
296 *Immunity* **54**, 2133-2142.e2133 (2021).
- 297 12. V. Oberhardt *et al.*, Rapid and stable mobilization of CD8(+) T cells by SARS-CoV-2
298 mRNA vaccine. *Nature* **597**, 268-273 (2021).
- 299 13. S. Havervall *et al.*, Robust humoral and cellular immune responses and low risk for
300 reinfection at least eight months following asymptomatic to mild COVID-19. *J Intern*
301 *Med*, (2021).
- 302 14. D. S. Khoury *et al.*, Neutralizing antibody levels are highly predictive of immune
303 protection from symptomatic SARS-CoV-2 infection. *Nat Med* **27**, 1205-1211 (2021).
- 304 15. M. Bergwerk *et al.*, Covid-19 Breakthrough Infections in Vaccinated Health Care
305 Workers. *N Engl J Med*, (2021).
- 306 16. P. A. Kristiansen *et al.*, WHO International Standard for anti-SARS-CoV-2
307 immunoglobulin. *Lancet (London, England)* **397**, 1347-1348 (2021).
- 308 17. F. Sallusto, A. Lanzavecchia, K. Araki, R. Ahmed, From vaccines to memory and
309 back. *Immunity* **33**, 451-463 (2010).
- 310 18. A. Cho *et al.*, Anti-SARS-CoV-2 receptor binding domain antibody evolution after
311 mRNA vaccination. *Nature*, (2021).
- 312 19. F. Krammer *et al.*, Antibody Responses in Seropositive Persons after a Single Dose of
313 SARS-CoV-2 mRNA Vaccine. *N Engl J Med* **384**, 1372-1374 (2021).
- 314 20. L. Stamatatos *et al.*, mRNA vaccination boosts cross-variant neutralizing antibodies
315 elicited by SARS-CoV-2 infection. *Science*, (2021).
- 316 21. Z. Wang *et al.*, mRNA vaccine-elicited antibodies to SARS-CoV-2 and circulating
317 variants. *Nature* **592**, 616-622 (2021).

- 318 22. C. Lucas *et al.*, Impact of circulating SARS-CoV-2 variants on mRNA vaccine-
319 induced immunity. *Nature*, (2021).
- 320 23. J. E. Ebinger *et al.*, Antibody responses to the BNT162b2 mRNA vaccine in
321 individuals previously infected with SARS-CoV-2. *Nat Med* **27**, 981-984 (2021).
- 322 24. S. Havervall *et al.*, Antibody responses after a single dose of ChAdOx1 nCoV-19
323 vaccine in healthcare workers previously infected with SARS-CoV-2. *EBioMedicine*
324 **70**, 103523 (2021).
- 325 25. A. S. Rudberg *et al.*, SARS-CoV-2 exposure, symptoms and seroprevalence in
326 healthcare workers in Sweden. *Nat Commun* **11**, 5064 (2020).
- 327 26. S. Havervall *et al.*, Symptoms and Functional Impairment Assessed 8 Months After
328 Mild COVID-19 Among Health Care Workers. *JAMA*, (2021).
- 329 27. H. Parry *et al.*, Extended interval BNT162b2 vaccination enhances peak antibody
330 generation in older people. *medRxiv*, 2021.2005.2015.21257017 (2021).
- 331 28. S. M. Mangsbo *et al.*, An evaluation of a FluoroSpot assay as a diagnostic tool to
332 determine SARS-CoV-2 specific T cell responses. *PLoS One* **16**, e0258041 (2021).
- 333 29. M. M. Patel *et al.*, Change in Antibodies to SARS-CoV-2 Over 60 Days Among
334 Health Care Personnel in Nashville, Tennessee. *JAMA*, (2020).
- 335 30. S. A. Plotkin, Correlates of protection induced by vaccination. *Clinical and vaccine*
336 *immunology : CVI* **17**, 1055-1065 (2010).
- 337 31. K. A. Earle *et al.*, Evidence for antibody as a protective correlate for COVID-19
338 vaccines. *Vaccine* **39**, 4423-4428 (2021).
- 339 32. S. Feng *et al.*, Correlates of protection against symptomatic and asymptomatic SARS-
340 CoV-2 infection. *Nature medicine*, (2021).
- 341 33. P. B. Gilbert *et al.*, Immune Correlates Analysis of the mRNA-1273 COVID-19
342 Vaccine Efficacy Trial. *medRxiv*, 2021.2008.2009.21261290 (2021).
- 343 34. A. Sheikh, J. McMenamin, B. Taylor, C. Robertson, SARS-CoV-2 Delta VOC in
344 Scotland: demographics, risk of hospital admission, and vaccine effectiveness. *Lancet*
345 **397**, 2461-2462 (2021).
- 346 35. J. Lopez Bernal *et al.*, Effectiveness of Covid-19 Vaccines against the B.1.617.2
347 (Delta) Variant. *New England Journal of Medicine*, (2021).
- 348 36. E. C. Wall *et al.*, Neutralising antibody activity against SARS-CoV-2 VOCs B.1.617.2
349 and B.1.351 by BNT162b2 vaccination. *Lancet* **397**, 2331-2333 (2021).
- 350 37. S. W. X. Ong *et al.*, Clinical and virological features of SARS-CoV-2 variants of
351 concern: a retrospective cohort study comparing B.1.1.7 (Alpha), B.1.315 (Beta), and
352 B.1.617.2 (Delta). *Clin Infect Dis*, (2021).
- 353 38. E. Teyssou *et al.*, The Delta SARS-CoV-2 variant has a higher viral load than the Beta
354 and the historical variants in nasopharyngeal samples from newly diagnosed COVID-
355 19 patients. *J Infect* **83**, e1-e3 (2021).
- 356 39. R. P. Payne *et al.*, Immunogenicity of standard and extended dosing intervals of
357 BNT162b2 mRNA vaccine. *Cell*, (2021).
- 358 40. S. Hober *et al.*, Systematic evaluation of SARS-CoV-2 antigens enables a highly
359 specific and sensitive multiplex serological COVID-19 assay. *Clin Transl Immunology*
360 **10**, e1312 (2021).
- 361 41. R. Varnaite *et al.*, Expansion of SARS-CoV-2-Specific Antibody-Secreting Cells and
362 Generation of Neutralizing Antibodies in Hospitalized COVID-19 Patients. *J Immunol*
363 **205**, 2437-2446 (2020).
- 364

365

366 **Funding**

367 Jonas & Christina af Jochnick foundation (CT)
368 Lundblad family foundation (CT)
369 Region Stockholm (CT)
370 Knut and Alice Wallenberg foundation (CT, SM)
371 Jonas Söderquist's scholarship (CT)
372 Science for Life Laboratory (PN)
373 Erling-Persson family foundation (SoH)
374 Center for Innovative Medicine (JK)
375 Swedish Research Council (JK)

376

377 **Author contributions**

378 Conceptualization: SeH, UM, MÅ, CT, SM
379 Methodology: SeH, UM, WC, MG, SM, JK MÅ, CT
380 Investigation: SeH, UM, NGN, HN, WC, KB, JK, PN, SoH, SM, MÅ, CT
381 Visualization: SeH, MG
382 Funding acquisition: CT, PN, SoH, JK, SM
383 Project administration: NGN, SeH, MÅ, CT
384 Supervision: CT, MÅ, SoH, MP, SM
385 Writing – original draft: SH, CT
386 Writing – review & editing: All authors

387

388 **Competing interests:**

389 SoH has participated on AstraZeneca COVID-19 SCG Virtual Advisory Board. Otherwise,
390 the authors declare no competing interests.

391

392 **Data and materials availability:** The anonymized datasets generated during and/or analysed
393 during the current study are available from the corresponding author on reasonable request.

394

395

396 **Tables**
397

	SARS-CoV-2 naïve			SARS-CoV-2 recovered		
	N	Age (IQR)	Female (%)	N	Age (IQR)	Female (%)
BNT162b2 (3-4 weeks d.i.)						
Total	262			75		
6 weeks p.v. (5-8)	69	50 (40-56)	84	27	50 (41-55)	81
12 weeks p.v. (11-14)	175	51 (40-57)	90	52	48 (39-56)	81
29 weeks p.v. (27-30)	246	50 (40-57)	87	68	49 (39-57)	82
BNT162b2 (6-8 weeks d.i.)						
Total	36			36		
12 weeks p.v. (11-14)	36	61 (54-62)	92	36	54 (40-60)	86
ChAdOx1 nCoV-19 (10-12 weeks d.i.)						
Total	61			47		
3 weeks p.v. (2-3)	48	52 (42-57)	90	35	52 (44-58)	86
14 weeks p.v. (13-15)	56	51 (38-56)	89	44	52 (44-57)	86

Table 1. Demographics of study participants. Age is presented as median with IQR; inter-quartile range. Weeks post second vaccine dose refers to point in time where sampling occurred and are presented as median together with the range. d.i.; dose interval, p.v.; post second vaccine dose.

398
399
400
401
402
403
404
405
406
407
408

409

	SARS-CoV-2 naïve		SARS-CoV-2 recovered	
	GMTs	95% CI	GMTs	95% CI
SARS-CoV-2 wild type IgG (BAU/ml)				
BNT162b2 (3-4 weeks d.i.)				
6 weeks p.v. (5-8)	981	(853-1128)	1875	(1222-2878)
12 weeks p.v. (11-14)	470	(430-513)	1278	(911-1793)
29 weeks p.v. (27-30)	148	(135-162)	524	(396-694)
BNT162b2 (6-8 weeks d.i.)				
12 weeks p.v. (11-14)	535	(414-692)	1345	(1043-1735)
ChAdOx1 nCoV-19 (10-12 weeks d.i.)				
3 weeks p.v. (2-3)	195	(137-275)	1350	(954-1910)
14 weeks p.v. (13-15)	105	(86-129)	591	(438-798)
Pseudo-neutralizing Ab (wild type variant) (AU/ml)				
BNT162b2 (3-4 weeks d.i.)				
6 weeks p.v. (5-8)	15.5	(13.5-17.7)	62.2	(33.0-117.2)
12 weeks p.v. (11-14)	8.5	(7.6-9.5)	27.2	(18.2-40.8)
29 weeks p.v. (27-30)	4.7	(4.5-5.0)	12.1	(9.7-15.2)
BNT162b2 (6-8 weeks d.i.)				
12 weeks p.v. (11-14)	10.9	(8.6-13.8)	30.2	(20.7-44.0)
ChAdOx1 nCoV-19 (10-12 weeks d.i.)				
3 weeks p.v. (2-3)	5.7	(5.1-6.3)	16.7	(11.9-23.4)
14 weeks p.v. (13-15)	4.0	(3.6-4.5)	12.7	(9.5-16.9)
Pseudo-neutralizing Ab (Delta variant) (AU/ml)				
BNT162b2 (3-4 weeks d.i.)				
6 weeks p.v. (5-8)	21.9	(18.1-26.5)	62.6	(30.8-127.0)
12 weeks p.v. (11-14)	8.4	(7.1-9.9)	30.1	(20.4-44.5)
29 weeks p.v. (27-30)	4.8	(4.0-5.7)	17.5	(13.7-22.2)
BNT162b2 (6-8 weeks d.i.)				
12 weeks p.v. (11-14)	14.6	(11.5-18.5)	40.1	(29.2-55.2)
ChAdOx1 nCoV-19 (10-12 weeks d.i.)				
3 weeks p.v. (2-3)	8.0	(7.1-9.0)	24.2	(18.4-31.7)
14 weeks p.v. (13-15)	2.7	(1.6-4.3)	16.1	(10.9-23.6)

Table 2. Geometric mean titers (GMTs) of SARS-CoV-2 wild type spike IgG and pseudo-neutralizing antibodies in the different study groups. Weeks post second vaccine dose refers to point in time where sampling occurred and are presented as median together with the range. CI; confidence interval, Ab; antibodies, d.i.; dose interval, p.v.; post second vaccine dose, AU; arbitrary unit, BAU; binding antibody unit.

410

411

412

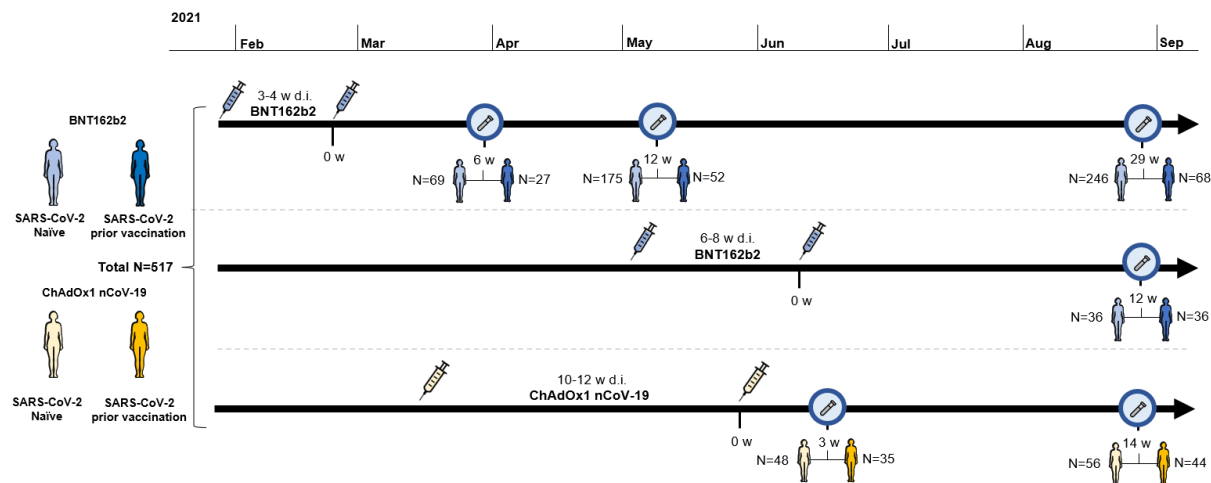
413

414

415

416 **Figures**

417

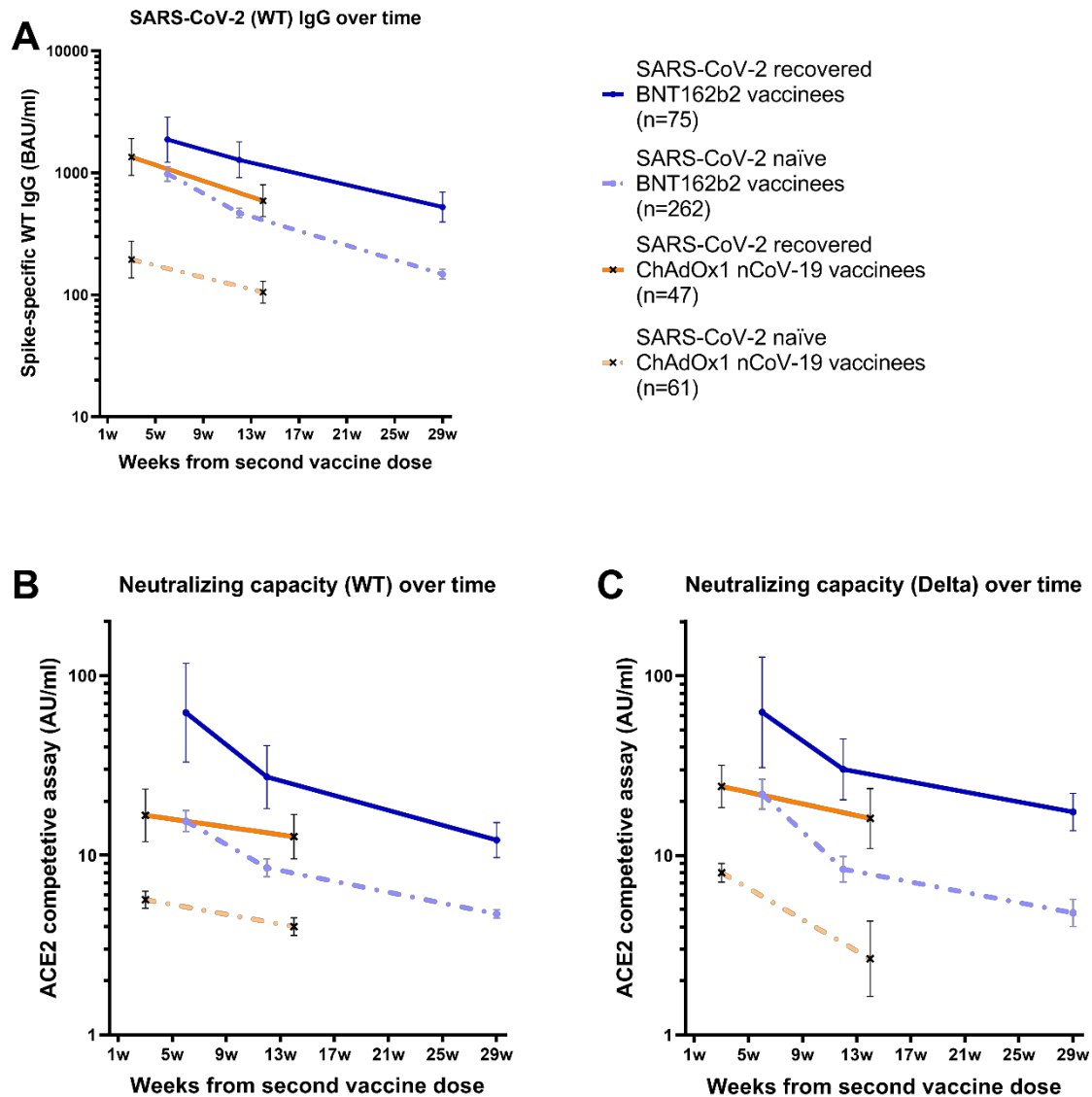


418

419 **Figure 1. Timeline for vaccination and sample collection.** The cohort is divided into
 420 participants receiving BNT162b2 with a 3-4 week and a 6–8 week dose interval and
 421 ChAdOx1 nCoV-19 with a 10-12 week dose interval. Blue characters represent vaccinees that
 422 received BNT162b2 and yellow characters represent vaccinees that received ChAdOx1
 423 nCoV-19. Light colored characters represent SARS-CoV-2 naïve and dark colored characters
 424 represent participants with SARS-CoV-2 infection prior vaccination. Test tubes represent
 425 time for blood sampling and syringes represent time for vaccination. w; weeks. d.i.; dose
 426 interval.

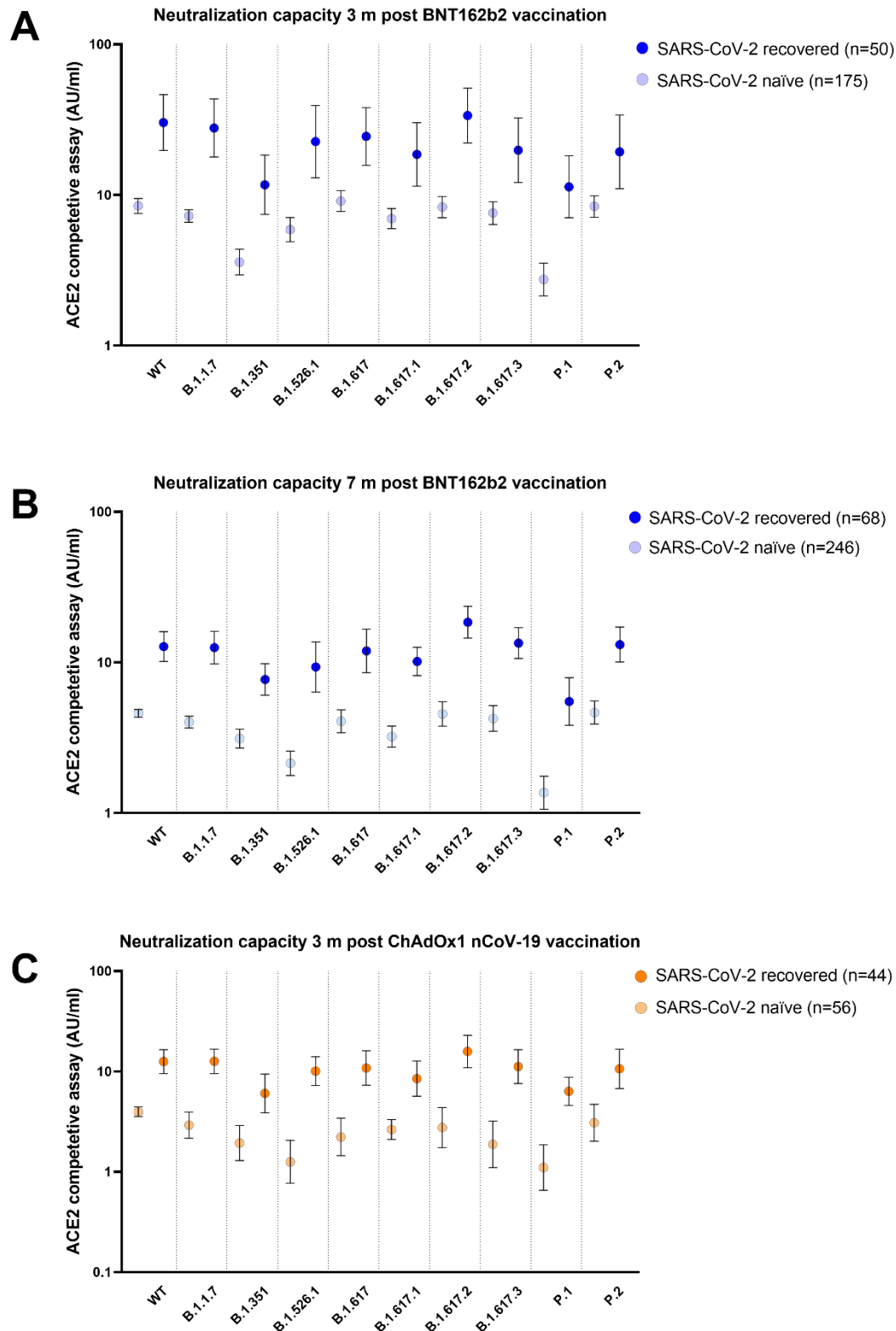
427

428



429

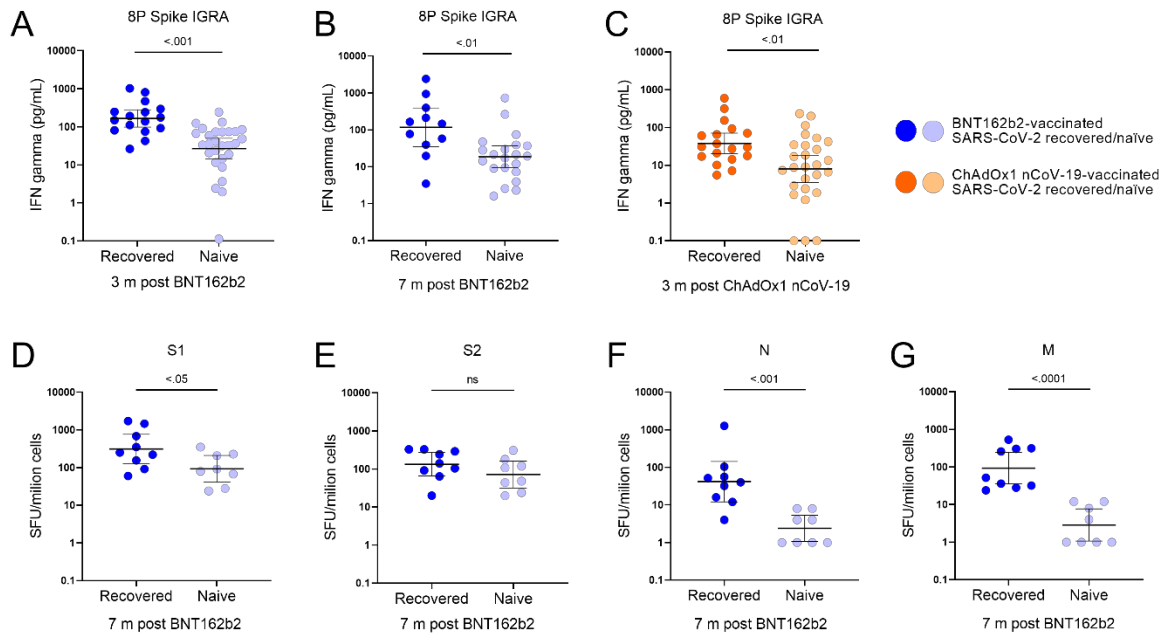
430 **Figure 2. Binding and pseudo-neutralizing antibody titers over time following**
 431 **BNT162b2 and ChAdOx1 nCoV-19 vaccination with and without prior SARS-CoV-2**
 432 **infection.** A) Binding antibody titers against SARS-CoV-2 wild type over 7 months following
 433 the second BNT162b2 dose and 3 months following the second ChAdOx1 nCoV-19 dose in
 434 SARS-CoV-2 recovered and naïve vaccinees, B) pseudo-neutralizing antibodies against the
 435 wild type over 7 months following the second BNT162b2 dose and 3 months following the
 436 second ChAdOx1 nCoV-19 dose in SARS-CoV-2 recovered and naïve vaccinees, and C)
 437 pseudo-neutralizing antibodies against the Delta variant type over 7 months following the
 438 second BNT162b2 dose and 3 months following the second ChAdOx1 nCoV-19 dose in
 439 SARS-CoV-2 recovered and naïve vaccinees. Dots and crosses represent geometric mean
 440 titers and bars represent 95 % CI. Solid lines represent SARS-CoV-2 recovered vaccinees and
 441 dotted lines represent SARS-CoV-2 naïve vaccinees. WT; wild type, BAU; binding antibody
 442 units, AU; arbitrary units.
 443



444

445 **Figure 3. Neutralizing capacity over time.** Neutralizing capacity A) 3 months and B) 7
446 months post BNT162b2 vaccination and C) 3 months post ChAdOx1 nCoV-19 vaccination
447 against ten SARS-CoV-2 variants including the wild type (WT), B.1.1.7 (Alpha), B.1.351
448 (Beta), B.1.526.1 (New York), B.1.617 (India), B.1.617.1 (Kappa), B.1.617.2 (Delta),
449 B.1.617.3 (India), P.1 (Gamma), and P.2 (Zeta) variants. Dots represent geometric mean titers

450 and bars represent 95 % CI. Dark colored dots represent SARS-CoV-2 recovered vaccinees
451 and light-colored dots represent SARS-CoV-2 naïve vaccinees.
452
453



454
455 **Figure 4. Memory T cell responses three and seven months following BNT612b2 and**
456 **ChAdOx1 nCoV-19 vaccination in SARS-CoV-2 recovered and naïve participants. A-C;**
457 **Whole blood IGRA assay using a SARS-CoV-2-specific peptide pool (8 SARS-CoV-2-**
458 **specific peptides covering the SARS-CoV-2 spike protein (13, 28)). D-G: T-cell responses**
459 **against S1, S2, N and M analyzed against T-SPOT® Discovery SARS-CoV-2 kit (Oxford**
460 **Immunotec). Blue dots represent BNT612b2 vaccinees (A-B, D-G), and orange dots represent**
461 **ChAdOx1 nCoV-19 vaccinees (C). Dark-colored dots represent SARS-CoV-2 recovered**
462 **participants, light-colored dots represent SARS-CoV-2 naïve. Lines represent geometric mean**
463 **and error bars represent 95% confidence interval.**
464

465
466
467
468
469
470
471
472
473
474

475 **Supplementary material**

476

477 **Materials and methods**

478 ***Study population***

479 The participants of the COMMUNITY study are followed every four months since inclusion
480 in April 2020, where SARS-CoV-2 spike-specific IgG are analyzed by multiplex antigen bead
481 array (40). Previous SARS-CoV-2 infection was confirmed by seroconversion at any of the
482 follow-up visits before vaccination. Date and type of vaccine was obtained through the
483 Swedish vaccination register (VAL Vaccinera). The study is approved by the Swedish Ethical
484 Review Authority (dnr 2020-01653) and written informed consent was obtained from all
485 study participants.

486

487 ***Binding and pseudo-neutralizing antibodies***

488 Binding antibodies (IgG) and pseudo-neutralizing antibodies against SARS-CoV-2 wild type
489 (WT) and B.1.1.7 (Alpha), B.1.351 (Beta), B.1.526.1 (New York), B.1.617 (India), B.1.617.1
490 (Kappa), B.1.617.2 (Delta), B.1.617.3 (India), P.1 (Gamma), and P.2 (Zeta) variants, were
491 measured in post vaccination samples using the V-PLEX SARS-CoV-2 Panel 13 (Meso Scale
492 Diagnostics, USA) for IgG and ACE2 (quantifying the ability to inhibit the binding between
493 the ACE2 receptor and the spike protein), respectively. Binding antibody titers for WT were
494 calibrated against the WHO standard (16) according to the manufacturer's instructions and
495 presented as Binding Antibody Units (BAU)/ml. Pseudo-neutralizing antibodies are expressed
496 as arbitrary units (AU)/ml.

497

498 ***Microneutralization assay***

499 Microneutralization based on cytopathic effects (CPE) was performed essentially as
500 previously described (41). Briefly, serum was 3-fold serially diluted, mixed with virus,
501 incubated for 1 hour and finally added, in duplicates, to confluent Vero E6 cells in 96-well
502 plates. Original SARS-CoV-2 WT (isolated from a Swedish patient) and the Delta variant
503 (from Statens Serum Institut, Copenhagen, Denmark), were used. After 5 days incubation, the
504 wells were inspected for signs of CPE by optical microscopy. Each well was scored as either
505 neutralizing (if no signs of CPE was observed) or non-neutralizing (if any CPE was
506 observed). The arithmetic mean neutralization titer of the reciprocals of the highest
507 neutralizing dilutions from the two duplicates for each sample was then calculated.

508

509 ***SARS-CoV-2 specific memory T cell response***

510 Whole blood Interferon-Gamma (IFN- γ) Release Assay (IGRA) was performed as previously
511 described (13, 28). A SARS-CoV-2-specific peptide pool was generated using 8 SARS-CoV-
512 2-specific peptides covering the SARS-CoV-2 spike. Peptides were synthesized with a purity
513 of >95% and contained no more than 5-mer length overlap with endemic coronaviruses (13,
514 28). Peripheral blood was collected in lithium heparin tubes and 0.5 ml was added to glucose
515 (2 mg/ml whole blood) and 0.9% NaCl with and without the stimulant. Samples were
516 incubated at 37°C with 5% CO₂ for 20 h. IFN- γ was analyzed in plasma using Mesoscale
517 Discovery V-plex kit (Meso Scale Diagnostics, Maryland, USA). The whole blood IGRA was
518 performed in a subset of 44 BNT162b2 vaccinated 3 months post vaccination (28 SARS-
519 CoV-2 naïve, age 53 [IQR 38-63], 79% female and 16 SARS-CoV-2 recovered, age 47 [IQR
520 39-55], 69% female), 32 BNT162b2 vaccinated 7 months post vaccination (21 SARS-CoV-2
521 naïve, age 53 [IQR 43-60], 95% female and 11 SARS-CoV-2 recovered, age 51 [IQR 39-56],
522 82% female) and 45 ChAdOx1 nCoV-19 vaccinated participants 3 months post vaccination
523 (27 SARS-CoV-2 naïve, age 55 [IQR 46-61], 85% female and 18 recovered, age 52 [IQR 46-
524 60], 83% female).

525
526 Peripheral blood mononuclear cells (PBMCs) were isolated from whole blood using CPT
527 tubes. After quantification and dilution of recovered cells, 250,000 PBMCs were plated into
528 each well of a T-SPOT® Discovery SARS-CoV-2 kit (Oxford Immunotec), according to
529 manufacturer's instructions. The kit contains overlapping peptide pools covering protein
530 sequences of six SARS-CoV-2 antigens, without HLA restriction. Peptide sequences with
531 high homology to endemic coronaviruses were removed, but sequences that may have
532 homology to SARS-CoV-1 were retained. Cells were incubated 20 hours and interferon- γ
533 secreting T cells detected. The T-spot analyses were performed in a sub-set of 17 BNT162b2
534 vaccinees seven months post vaccination (8 SARS-CoV-2 naïve, age 58 [IQR 52-62], 100%
535 female and 9 recovered, age 51 [IQR 35-59], 67% female).

536
537 ***Statistical analyses***

538 Spike IgG and pseudo-neutralizing antibody titers are presented as geometric mean titers
539 (GMTs) with 95% confidence interval (CI). Linear regression was used to compare
540 continuous variables between groups and were adjusted for sex and age. A t test on
541 logarithmized values was used to compare differences between the T cell analyses groups,
542 due to small number of study participants. Multiple samples per subject were analyzed using

543 linear-mixed effects regression with random intercepts per subject using the same adjustments
544 as for linear regression. The correlation coefficient was calculated using Spearman's
545 correlation analysis. Linear regression and mixed effects regressions were performed in R
546 (version 4.1.1) with nlme-package version 3.1.152 and contrast-package 0.22 while the
547 remainder were done in GraphPad Prism (version 9.1.1).
548