

1 ***Heart-brain connections: phenotypic and genetic insights from 40,000 cardiac and***
2 ***brain magnetic resonance images***

3

4 **Running title: Heart-brain connections**

5

6 Bingxin Zhao¹, Tengfei Li^{2,3}, Zirui Fan¹, Yue Yang⁴, Xifeng Wang⁴, Tianyou Luo⁴, Jiarui Tang⁴,
7 Di Xiong⁴, Zhenyi Wu¹, Jie Chen⁴, Yue Shan⁴, Chalmer Tomlinson⁴, Ziliang Zhu⁴, Yun Li^{4,5},
8 Jason L. Stein^{5,6}, and Hongtu Zhu^{3,4,5,7*}

9

10 ¹Department of Statistics, Purdue University, West Lafayette, IN 47907, USA.

11 ²Department of Radiology, University of North Carolina at Chapel Hill, Chapel Hill, NC 27599, USA.

12 ³Biomedical Research Imaging Center, School of Medicine, University of North Carolina at Chapel Hill,
13 Chapel Hill, NC 27599, USA.

14 ⁴Department of Biostatistics, University of North Carolina at Chapel Hill, Chapel Hill, NC 27599, USA.

15 ⁵Department of Genetics, University of North Carolina at Chapel Hill, Chapel Hill, NC 27599, USA.

16 ⁶UNC Neuroscience Center, University of North Carolina at Chapel Hill, Chapel Hill, NC, USA.

17 ⁷Department of Computer Science, University of North Carolina at Chapel Hill, Chapel Hill, NC 27599,
18 USA.

19

20 **Corresponding author:*

21 Hongtu Zhu

22 3105C McGavran-Greenberg Hall, 135 Dauer Drive, Chapel Hill, NC 27599.

23 E-mail address: htzhu@email.unc.edu Phone: (919) 966-7250

24

25

26

27

28

29

30

31

32

1 **Abstract**

2 Cardiovascular health interacts with cognitive and psychological health in complex ways.
3 Yet, little is known about the phenotypic and genetic links of heart-brain systems. Using
4 cardiac and brain magnetic resonance imaging (CMR and brain MRI) data from over
5 40,000 UK Biobank subjects, we developed detailed analyses of the structural and
6 functional connections between the heart and the brain. CMR measures of the
7 cardiovascular system were strongly correlated with brain basic morphometry, structural
8 connectivity, and functional connectivity after controlling for body size and body mass
9 index. The effects of cardiovascular risk factors on the brain were partially mediated by
10 cardiac structures and functions. Using 82 CMR traits, genome-wide association study
11 identified 80 CMR-associated genomic loci ($P < 6.09 \times 10^{-10}$), which were colocalized with
12 a wide spectrum of heart and brain diseases. Genetic correlations were observed
13 between CMR traits and brain-related complex traits and disorders, including
14 schizophrenia, bipolar disorder, anorexia nervosa, stroke, cognitive function, and
15 neuroticism. Our results reveal a strong heart-brain connection and the shared genetic
16 influences at play, advancing a multi-organ perspective on human health and clinical
17 outcomes.

18
19 **Keywords:** Brain MRI; Brain disorders; CMR; Cardiovascular diseases; Heart-brain
20 connections; GWAS; UK Biobank.

21
22
23
24
25
26
27
28
29
30
31

1 A growing amount of evidence suggests close interplays between heart health and brain
2 health (**Fig. 1A**). Cardiovascular diseases may provide a pathophysiological background
3 for several brain diseases, such as stroke¹, dementia², and cognitive impairment³⁻⁵. For
4 example, atrial fibrillation has been linked to increased incidence of dementia⁶ and silent
5 cerebral damage⁷, even in stroke-free cohorts⁸. It is consistently observed that heart
6 failure is associated with cognitive impairment and eventually dementia⁹, likely due to
7 the reduced cerebral perfusion caused by the failing heart¹⁰. Mental disorders and
8 negative psychological factors, on the other hand, contribute substantially to the
9 initiation and progression of cardiovascular diseases^{11,12}. Patients with mental illnesses
10 (such as schizophrenia, bipolar disorder, or depression) show an increased incidence of
11 cardiovascular diseases¹³⁻¹⁶. Acute mental stress may cause a higher incidence of
12 atherosclerosis due to stress-induced vascular inflammation and leucocytes migration¹⁷.
13 In part due to the lack of data, almost all prior studies on heart-brain interactions focused
14 on one (or a few) specific diseases or used small samples. The overall picture of structural
15 and functional links between the heart and the brain remains unclear.

16
17 In heart and brain diseases, magnetic resonance imaging (MRI) traits are well-established
18 endophenotypes. Cardiovascular magnetic resonance imaging (CMR) is used to assess
19 cardiac structure and function, yielding insights into the risk and pathological status of
20 cardiovascular diseases¹⁸⁻²⁰. Brain MRI provides detailed information about brain
21 structure and function²¹. Clinical applications of brain MRI have revealed the associated
22 abnormalities that accompany multiple neurological and neuropsychiatric disorders²²⁻²⁴.
23 Moreover, twin and family studies have shown that CMR and brain MRI traits are
24 moderately to highly heritable²⁵⁻²⁸. For example, the left ventricular mass (LVM) has a
25 heritability greater than 0.8²⁷. The majority of brain structural MRI traits are highly
26 heritable (heritability ranges from 0.6 to 0.8)²⁹ and the heritability of brain functional
27 connectivity is largely between 0.2 and 0.6³⁰. A few recent genome-wide association study
28 (GWAS) have been separately conducted on CMR³¹⁻³⁶ and brain MRI traits³⁷⁻⁴². Although
29 MRI is widely used in clinical research and genetic mapping, few studies have used multi-
30 organ MRI to examine heart-brain connections and identify the heart's and brain's shared
31 genetic signatures.

32

1 In this paper, we investigated heart-brain connections using multi-organ imaging data
2 obtained from over 40,000 subjects in the UK Biobank (UKB) study. By using a newly
3 developed heart segmentation and feature extraction pipeline⁴³, we generated 82 CMR
4 traits from the raw short-axis, long-axis, and aortic cine images. These CMR traits included
5 global measures of 4 cardiac chambers (the left ventricle (LV), right ventricle (RV), left
6 atrium (LA), and right atrium (RA)) and 2 aortic sections (the ascending aorta (AAo) and
7 descending aorta (DAo)), as well as regional phenotypes of the LV myocardial-wall
8 thickness and strain (**Table S1** and **Supplementary Note**). Then we identified the
9 relationships between the 82 CMR traits and a large number of the brain MRI traits
10 discovered from multi-modality images, including T1 structural MRI (sMRI), diffusion
11 brain MRI (dMRI), resting functional MRI (resting fMRI), and task functional MRI (task
12 fMRI). These brain MRI traits provided fine details of basic brain morphometry³⁸ (regional
13 brain volumes and cortical thickness traits), brain structural connectivity⁴⁴ (diffusion
14 tensor imaging (DTI) parameters of white matter tracts), and brain intrinsic and extrinsic
15 functional organizations⁴² (functional activity and connectivity at rest and during a task)
16 (**Table S2**). To evaluate the genetic determinates underlying heart-brain connections, we
17 performed GWAS for the 82 CMR traits to uncover the genetic architecture of heart and
18 aorta. In comparison to existing GWAS of CMR traits³¹⁻³⁶, our study used a much broader
19 group of cardiac and aortic traits, which allowed us to identify the shared genetic
20 components with a wide variety of brain-related complex traits and disorders. For
21 example, Pirruccello, et al.³⁵ mainly focused on 9 measures of the right heart, Aung, et al.
22 ³¹ analyzed 6 LV traits, and Thanaj, et al.³⁶ studied 3 traits of diastolic function. Our study
23 design is summarized in **Fig. S1**. The GWAS results of 82 CMR traits can be explored and
24 are freely available through the heart imaging genetics knowledge portal (Heart-KP)
25 <http://heartkp.org/>.

26

27 **RESULTS**

28 **Phenotypic heart-brain connections**

29 To verify that the 82 CMR traits are well-defined and biologically meaningful, we first
30 examined their reproducibility using the repeat scans obtained from the UKB repeat
31 imaging visit ($n = 2,903$, average time between visits = 2 years). For each trait, we
32 calculated the correlation between two observations from all revisited individuals. The

1 average reproducibility was 0.652 (range = (0.369, 0.970), **Table S1**). A few volumetric
2 traits had very high reproducibility (> 0.9), including the LV end-diastolic volume (LVEDV),
3 LV myocardial mass (LVM), RV end-diastolic volume (RVEDV), RV end-systolic volume
4 (RVESV), AAO maximum area, AAO minimum area, DAo maximum area, and DAo minimum
5 area. The ejection fraction (such as the LV ejection fraction (LVEF)) and distensibility traits
6 (such as the descending aorta distensibility (DAo aorta distensibility)) had the lowest
7 reproducibility among all volumetric traits (mean = 0.573 and 0.537, respectively). In
8 addition, the average reproducibility was 0.758 for the 17 wall thickness traits, 0.530 for
9 the 7 longitudinal peak strains, 0.568 for the 17 circumferential strains, and 0.514 for the
10 17 radial strains. Overall, these results suggest that the extracted CMR traits have
11 moderate to high within subject reliability and can consistently annotate the cardiac and
12 aortic structure and function.

13

14 With the control of a large number of covariates, we examined the associations between
15 the CMR traits and brain MRI traits in UKB individuals of white British ancestry ($n = 31,875$,
16 Methods). Particularly, we adjusted for body size (height and weight) and body mass
17 index in all our analyses. At the Bonferroni significance level ($P < 1.33 \times 10^{-6}$), CMR traits
18 were associated with a wide variety of brain MRI traits, including regional brain volumes,
19 cortical thickness, DTI parameters, and resting and task fMRI traits (**Fig. 2A** and **Fig. S2**).
20 For example, the total brain volume had strong positive associations with volumetric
21 measures of right and left heart as well as aortic sections, with the top ranked traits being
22 the AAO maximum area, RA stroke volume (RASV), DAo minimum area, RVESV, RVEDV,
23 and right atrium maximum volume (RAV max) ($\beta > 0.112$, $P < 1.60 \times 10^{-61}$, **Fig. S3**). These
24 volumetric traits were also widely associated with regional brain volumes, after adjusting
25 for the total brain volume. A large proportion of these associations were positive, and the
26 negative ones were specifically observed in the cerebrospinal fluid (CSF) and ventricle
27 volumes (e.g., the lateral ventricle and third ventricle). The wall thickness traits were
28 positively associated with subcortical structures (e.g., the putamen, caudate, and
29 hippocampus) and negatively associated with the lateral occipital and rostral middle
30 frontal. In addition, cortical thickness measures were associated with multiple CMR traits,
31 and the strongest associations were observed in the left ventricular cardiac output (LVCO)

1 and DAo aorta distensibility (**Fig. S4**). These results uncover that heart structure and
2 function have close relationships with basic brain morphometry.

3

4 CMR traits were also strongly correlated with brain structural and functional connectivity.
5 For example, fractional anisotropy (FA) was a robust measure of brain structural
6 connectivity and white matter microstructure. The average FA was positively associated
7 with the LV ejection fraction (LVEF), DAo aorta distensibility, and AAO aorta distensibility
8 ($\beta > 0.035$, $P < 1.69 \times 10^{-8}$, **Fig. S5**), and had negative correlations with many other CMR
9 traits, including the LVM, LVEDV, left ventricular end-systolic volume (LVESV), global wall
10 thickness, AAO maximum area, and DAo maximum area. For resting fMRI, both mean
11 functional connectivity and mean amplitude (functional activity) were negatively
12 associated with volumetric measures of 4 cardiac chambers, such as the LVCO, RV ejection
13 fraction (RVEF), LA stroke volume (LASV), and RA ejection fraction (RAEF) ($\beta < -0.062$, $P <$
14 4.87×10^{-24} , **Fig. S6**). Positive correlations were mainly located in the AAO aorta
15 distensibility, DAo aorta distensibility, longitudinal strain, and peak circumferential strain.
16 Similar patterns were observed for task fMRI traits (**Fig. S7**).

17

18 Brain functional traits could be more directly related to human behavioral and cognitive
19 differences than brain structural traits⁴⁵. To further discover fine details of CMR-
20 connections with brain functions, we examined pairwise associations between 82 CMR
21 traits and 64,620 high-resolution functional connectivity traits⁴² in resting fMRI.
22 Significant associations ($P < 7.15 \times 10^{-8}$) were observed across the functional connectivity
23 of the whole brain, with enrichment in specific brain functional areas and networks (**Fig.**
24 **2B** and **Fig. S8**). For example, the somatomotor network and its connectivity with the
25 secondary visual network had strong associations with multiple CMR traits. Specifically,
26 positive somatomotor-associations were observed in the LVM, LVESV, RVEDV, RVESV,
27 RAV min, AAO aorta distensibility, DAo aorta distensibility, global peak circumferential
28 strain, and global longitudinal peak strain (**Fig. 2C** and **Figs. S9-S16**), and negative
29 correlations were observed in all the 4 ejection fraction traits (RVEF, LAEF, RAEF, and
30 LVEF), LVCO, and global radial strain (**Fig. 2D** and **Figs. S17-S22**). Furthermore, the
31 auditory network had strong negative associations with volumetric measures of heart,
32 including all the 4 stroke volumes (LVSV, RVSV, LASV, and RASV), LVCO, LVEDV, RVEF, left

1 atrium maximum volume (LAV max), and RAEF (**Figs. S17, S19, S21, and S23-S28**). On the
2 other hand, the AAO aorta distensibility and DAO aorta distensibility were positively
3 correlated with the auditory network (**Figs. S13-S14**). There were also significant
4 correlations with cognitive networks, including the default mode, cingulo-opercular,
5 dorsal attention, and frontoparietal networks. For example, the default mode network
6 was associated with the 4 ejection fraction traits, most of the associations were positive
7 (**Fig. S29**). The default mode network was also negatively associated with other
8 volumetric heart measures (such as the LVESV, LVSV, LVM, LASV, RVEDV, RVESV, RVSV,
9 and RASV), whose associations were enriched in the hippocampal and visual areas of the
10 default model network (**Figs. S30-S31**). For aortic measures, the associations were mainly
11 located in the hippocampal areas of the default model network (**Fig. S32**). In summary,
12 MRI-based endophenotype analysis reveals substantial neuro-cardiac interactions. Our
13 results show the specific pattern of heart-brain connections and highlight important brain
14 areas and networks that might be strongly related to heart health.

15

16 **Mediation analysis with cardiovascular risk factors and biomarkers**

17 Environmental factors and biomarkers may play an important role in the underlying
18 mechanisms of heart-brain interactions. Clear evidence from clinical and epidemiological
19 studies exists that cardiovascular risk factors (such as hypertension, high cholesterol, high
20 fasting glucose, metabolic syndrome, and chronic kidney disease) negatively influence
21 brain health and neurocognitive performance^{1,3,46,47}. However, it remains challenging to
22 understand how these cardiac risk factors cause brain damages. To bridge this gap, we
23 performed mediation analysis by using the 82 CMR traits as intermediate variables⁴⁸.
24 Specifically, we investigated whether cardiovascular risk factors could influence brain
25 structure and function indirectly through heart conditions captured by the 82 CMR traits
26 (Methods). We examined cardiovascular risk factors, including diastolic blood pressure,
27 systolic blood pressure, diabetes mellitus, smoking, drinking, and basal metabolic rate, as
28 well as 34 biomarkers collected in the UKB study.

29

30 Significant CMR-mediation effects were observed for 1,148 pairs between 34
31 cardiovascular risk factors/ biomarkers and 235 brain MRI traits ($P < 2.21 \times 10^{-6}$, **Table S3**).
32 These results suggest that associations between cardiovascular risk factors and brain

1 health were partially mediated by cardiac structure and function. For example, the
2 diastolic blood pressure was widely associated with cortical thickness, regional brain
3 volumes, DTI parameters, and functional connectivity (**Fig. 3A**). On average, 40.3% of
4 diastolic blood pressure's effects on DTI parameters were indirect and mediated through
5 CMR traits (**Fig. 3B**). The other diastolic blood pressure' effects (59.7%) could be direct
6 effects on DTI parameters or indirect effects through non-cardiac mechanisms. The
7 average proportion of mediated effects was 56.2% for cortical thickness, 38.6% for
8 regional brain volumes, 37.5% for resting fMRI traits, and 33.6% for task fMRI traits.
9 Similar mediation patterns were also observed on systolic blood pressure and
10 hypertension (**Fig. S33**). Hypertension has been reported to be associated with cognitive
11 dysfunction⁴⁹ and brain white matter hyperintensities, which might be a consequence of
12 chronic ischaemia caused by cerebral small vessel disease⁵⁰. Mediation effects were also
13 observed on multiple cardiovascular biomarkers, such as low-density lipoprotein (LDL)
14 cholesterol, high-density lipoprotein (HDL) cholesterol, and triglyceride (**Fig. S34**).

15

16 CMR-mediated effects of type 2 diabetes (T2D) on the brain were observed (**Fig. 3C**).
17 Insulin signaling plays a critical role in brain health and patients with diabetes are at higher
18 risk of cognitive impairment and dementia⁵¹. The average proportion of CMR-mediated
19 T2D effects was 16.8% for DTI parameters, 10.3% for cortical thickness, and 13.1% for
20 regional brain volumes. For example, T2D was negatively related to total brain volume (β
21 = -0.025, $P = 9.64 \times 10^{-9}$). After adjusting for the CMR traits, the effect became smaller (β
22 = -0.017, $P = 5.80 \times 10^{-5}$), suggesting that 32% (0.008/0.025) of the T2D effects were
23 mediated through CMR traits. In addition, mediation effects were observed on glycated
24 hemoglobin A (HbA1c) and glucose, which were biomarkers of diabetes. High HbA1c level
25 (hyperglycaemia) is associated with worse brain health and cognitive functions⁵², such as
26 memory loss, poorer processing speed, attention, concentration, and executive
27 functions^{53,54}. As the primary source of energy for the brain, glucose metabolism plays an
28 important role in the physiological and pathological functioning of the brain⁵⁵. About
29 15.5% of HbA1c's effects on DTI parameters and 14.1% of glucose's effects on cortical
30 thickness were CMR-mediated (**Fig. 3D** and **Fig. S35**). Other biomarkers whose effects on
31 brain MRI were mediated by CMR included creatinine, urate, total protein, and gamma-
32 glutamyl transpeptidase (GGT) (**Figs. S36-S37**). Creatinine, total protein, and urate are

1 kidney biomarkers of renal function, which have been consistently associated with white
2 matter brain deficits⁵⁶ and neurodegenerative diseases⁵⁷. GGT is a liver biomarker of
3 potential hepatic or biliary diseases and has been reported to be associated with cognitive
4 decline and increased risk of dementia⁵⁸. In summary, multiple categories of factors and
5 biomarkers strongly influence brain health, and their influences are partly mediated by
6 cardiovascular conditions. Understanding these mediation mechanisms underlying heart-
7 brain connections might assist in preventing and detecting brain diseases.

8

9 **Heritability and the associated genetic loci of 82 CMR traits**

10 We estimated the single-nucleotide polymorphism (SNP) heritability for the 82 CMR traits
11 using UKB individuals of white British ancestry⁵⁹ ($n = 31,875$, Methods). The mean
12 heritability (h^2) was 23.0% for the 82 traits (range = (7.06%, 70.3%), **Fig. 4A**), all of which
13 remained significant adjusting for multiple testing using the Benjamini-Hochberg
14 procedure to control the false discovery rate (FDR) at 0.05 level (**Table S4**). The h^2 of the
15 AAO maximum area, AAO minimum area, DAAO maximum area, and DAAO minimum area
16 was larger than 50%. Among cardiac traits, the global wall thickness, RVESV, RVEDV,
17 LVESV, LVEDV, and LVM had the highest heritability ($h^2 > 37.7\%$). As expected, more
18 reproducible CMR traits show higher heritability (correlation = 0.88, $P < 2.2 \times 10^{-16}$, **Fig.**
19 **S38**). To identify reliable genetic signals for these CMR traits, large-scale samples from a
20 homogeneous cohort are needed, especially for CMR traits with relatively low heritability.

21

22 We next performed GWAS for the 82 CMR traits using this white British cohort ($n = 31,875$,
23 Methods). All Manhattan and QQ plots can be browsed through the server on Heart-KP
24 (<http://67.205.180.40:443/>). The intercepts of linkage disequilibrium (LD) score
25 regression (LDSC)⁶⁰ were all close to one, suggesting no genomic inflation of test statistics
26 due to confounding factors (mean intercept = 1.0002, range = (0.987, 1.019)). At the
27 significance level 6.09×10^{-10} ($5 \times 10^{-8}/82$, that is, the standard GWAS significance
28 threshold, additionally Bonferroni-adjusted for the 82 traits), we identified independent
29 (LD $r^2 < 0.1$) significant associations in 80 genomic regions (cytogenetic bands) for 49 CMR
30 traits, including 35 for left ventricular, 35 for ascending aorta, 14 for descending aorta, 10
31 for right ventricular, and 1 for left atrium (**Fig. 4B** and **Table S5**, Methods). Detailed
32 interpretations of these identified regions can be found in next Section. When relaxing

1 the significance level to 5×10^{-8} , there were 156 significant genomic regions (76 more) for
2 72 CMR traits.

3

4 On average, the 80 (covering 12.3% of genetic variants) and 76 (10.9% variants) CMR-
5 associated genetic regions separately explained 20.5% (that is, 4.7%/23%) and 12.6%
6 (2.9%/23%) of the heritability of CMR traits, indicating that about 66.9% (15.4%/23%) of
7 the heritability remained unexplained by these significant regions (**Fig. S39**). These results
8 illustrate a highly polygenic genetic architecture for CMR traits⁶¹. In addition, the 80 CMR-
9 associated regions explained 14.3% (6.8%/47.6%) of the SNP heritability of DTI
10 parameters, suggesting that the genetic effects on white matter microstructure were
11 enriched in these CMR-associated regions. We next used the previously identified DTI-
12 associated genes as an annotation⁴⁰ to perform partitioned heritability enrichment
13 analysis⁶² for the 82 CMR traits. At FDR 5% level, heritability of 26 CMR traits was
14 significantly (P range = $(6.89 \times 10^{-5}, 1.15 \times 10^{-2})$) enriched in genomic regions influencing
15 DTI parameters (**Fig. S40**). In addition to DTI parameters, other brain MRI traits showed
16 overlapped genetic influences with CMR traits, but with less evidence for enrichment.
17 Specifically, the 80 CMR-associated regions can explain 13.7% (1.7%/12.8%) of the
18 heritability of task fMRI traits, 13.4% (2.8%/20.9%) of cortical thickness, 12.5%
19 (4.6%/36.8%) of regional brain volumes, and 12.2% (1.8%/14.8%) of resting fMRI traits.
20 Overall, these results suggest that the CMR traits had shared heritability with brain MRI
21 traits, especially with DTI parameters measuring white matter microstructure.

22

23 To replicate the identified loci, we performed separate GWAS using hold-out datasets in
24 the UKB study that were independent from our discovery dataset. First, we repeated
25 GWAS on a European dataset with 8,252 subjects (Methods). For the 248 independent
26 ($LD\ r^2 < 0.1$) CMR-variant associations in the 80 genomic regions, 57 (23%, in 25 regions)
27 passed the Bonferroni significance level (2.02×10^{-4} , 0.05/248) in this European validation
28 GWAS, and 184 (74.19%, in 61 regions) were significant at nominal significance level
29 (0.05). All the 184 associations had concordant directions in the two independent GWAS
30 and the correlation of their genetic effects was 0.93 (**Fig. S41** and **Table S6**). These results
31 show a high degree of generalizability of our GWAS findings among European cohorts.
32 We also performed GWAS on two non-European UKB validation datasets: the UKB Asian

1 (UKBA, $n = 500$) and UKB Black (UKBBL, $n = 271$). One association between 8q24.3 and the
2 RVEF passed the Bonferroni significance level ($P = 6.20 \times 10^{-5}$) in UKBA, and 13 more
3 regions passed nominal significance level. For UKBB, 11 regions passed the nominal
4 significance level and none of them survived the Bonferroni significance level, which may
5 partially be due to the small sample size of this non-European GWAS.

6

7 Additionally, we evaluated the ancestry specific effects using Asian GWAS summary
8 statistics of three CMR traits (analogous to the LVEDV, LVESV, and LVEF³⁴), which were
9 generated from 19,000 subjects in the BioBank Japan (BBJ) study⁶³. At the 5×10^{-8}
10 threshold, the BBJ identified independent ($LD r^2 < 0.1$) significant associations in 6 regions
11 (2p14, 11p15.1, 22q11.23, 8q24.13, 10q22.2, and 18q12.1), 4 of which (22q11.23,
12 8q24.13, 10q22.2, and 18q12.1) were among the 156 regions we discovered based on
13 data from UKB white British. Specifically, the 22q11.23 and 8q24.13 regions were
14 significantly associated with the LVSEV in both UKB and BBJ studies (**Figs. 4C-4D**). The
15 10q22.2 and 18q12.1 regions were separately associated with the LVEDV and LVESV in
16 BBJ but not in UKB (**Figs. S42-S43**). Instead, the two regions were significantly associated
17 with the wall thickness traits in UKB ($P < 6.77 \times 10^{-10}$). Additionally, only CMR traits in BBJ
18 were associated with the 11p15.1 and 2q14 regions (**Figs. 2E and S44**), likely representing
19 population specific genetic influences in Asian population.

20

21 Finally, we constructed polygenic risk scores (PRS) via lassosum⁶⁴ to evaluate the out of
22 sample prediction power of the discovery GWAS results. We used 2,000 subjects from our
23 European validation GWAS as validation data and evaluated the performance on the left
24 independent subjects ($n = 5,551$). Among the 82 CMR traits, 73 had significant PRS at FDR
25 5% level (P range = $(7.38 \times 10^{-136}, 3.49 \times 10^{-2})$, **Table S7**). The highest incremental R-
26 squared (after adjusting the effects of age, sex, and ten genetic principal components
27 (PCs)) was observed on the AAO minimum area and AAO maximum area (8.52% and
28 8.36%, respectively). Other traits whose incremental R-squared larger than 1% included
29 the DAO minimum area, DAO maximum area, RVEDV, RVESV, LAV max, and wall thickness
30 traits (R-squared range = (1.01%, 3.32%), $P < 4.33 \times 10^{-15}$). To evaluate the cross-
31 population performance, PRS was also constructed on UKB white British discovery GWAS
32 data using BBJ GWAS summary statistics of the LVEDV, LVESV, and LVEF. We found that

1 the PRS of these three traits were all significant in the UKB (P range = $(1.58 \times 10^{-11}, 8.13 \times$
2 $10^{-7})$, R-squared range= $(3.90 \times 10^{-4}, 1.35 \times 10^{-3})$). The prediction accuracy was lower than
3 that in the above within European prediction analysis (R-squared range= $(7.72 \times 10^{-3}, 9.67$
4 $\times 10^{-3})$), which may be explained by the smaller training GWAS sample size in BBJ⁶⁵ and
5 the differences of genetic effects and LD among European and Asian populations⁶⁶. More
6 efforts are needed to identify causal variants associated with CMR traits in global diverse
7 populations and quantify population-specific heterogeneity of genetic effects.

8

9 **Pleiotropy of genetic variants across body systems**

10 To identify the shared genetic effects between CMR traits and complex traits, we carried
11 out association lookups for independent (LD $r^2 < 0.1$) significant variants (and variants in
12 their LD, $r^2 \geq 0.6$, $P < 6.09 \times 10^{-10}$) detected in our UKB white British GWAS. In the NHGRI-
13 EBI GWAS catalog⁶⁷, our results tagged variants that have been linked to a wide range of
14 traits and diseases, including heart diseases, heart structure and function, blood pressure,
15 lipid traits, blood traits, diabetes, stroke, neurological and neuropsychiatric disorders,
16 psychological traits, cognitive traits, lung function, parental longevity, smoking, drinking,
17 and sleep. To evaluate whether two associated genetic signals were consistent with the
18 shared causal variant, we applied the Bayesian colocalization analysis⁶⁸ for CMR traits and
19 selected complex traits whose GWAS summary statistics were publicly available. Evidence
20 of pairwise colocalization was defined as having a posterior probability of the shared
21 causal variant hypothesis (PPH4) > 0.8 ^{68,69}.

22

23 First, our results replicated 25 genomic regions that have been linked to cardiac and aortic
24 traits in previous GWAS, including 5 regions with left ventricular traits (such as 22q11.23
25 with fractional shortening⁷⁰, ejection fraction⁶³, and left ventricular internal dimension⁶³,
26 **Fig. S45**); 17 regions with heart rate and electrocardiographic traits (such as 1p36.32,
27 5q33.2, 10q25.2, 12q24.21, and 14q24.2 with PR interval⁷¹ and QRS duration⁷²) (**Figs. S46-**
28 **S50**); and 6 regions with aortic measures (such as in 15q21.1 with thoracic aortic
29 aneurysms and dissections⁷³ and in 15q24.1 with aortic root size⁷⁰, **Figs. S51-S52**). In
30 addition, 24 regions had shared associations (LD $r^2 \geq 0.6$) with cardiovascular diseases,
31 including 9 regions with coronary artery disease^{74,75} (such as 17p13.3 and 12q24.12, **Figs.**
32 **S53-S54**); 9 regions with atrial fibrillation^{76,77} (such as 6p21.2, 1p13.1, 2q31.2, 8q24.13,

1 15q26.3, and 22q12.1, **Figs. 5A** and **S55-S59**); 6q22.33, 10q23.33, and 11p15.5 with
2 hypertension^{78,79} (**Figs. S60-S62**); 15q21.1 and 13q12.11 with abdominal aortic
3 aneurysm^{80,81} (**Figs. S51** and **S63**); 14q24.2 with mitral valve prolapse⁸² (**Fig. S50**); and
4 10q26.11 and 1p36.13 with idiopathic dilated cardiomyopathy⁸³ (**Figs. S64-S65**). There
5 was widespread evidence of colocalization on many on many loci (PPH4 > 0.849).
6 Additionally, 41 of the 80 genomic regions were associated with blood pressure traits,
7 such as systolic blood pressure, diastolic blood pressure, pulse pressure⁸⁴, and mean
8 arterial pressure⁸⁵ (**Figs. 5B** and **S66-S85**). CMR traits were in LD ($r^2 \geq 0.6$) with various
9 cardiovascular biomarkers in 32 genomic regions, such as 12q24.12, 6q22.33, 5q31.1, and
10 17q12 with blood metabolite levels⁸⁶ and lipid traits^{87,88} (including HDL, LDL, and
11 triglycerides, **Figs. S54, S60, S71, and S86**); and 3p13, 3p25.1, 5q15, 12q14.1, and 22q13.1
12 with red blood cell count⁸⁹, blood protein levels⁹⁰, red cell distribution width⁹¹, and
13 plateletcrit⁸⁹ (**Figs. S87-S91**).

14

15 We found genetic pleiotropy between CMR traits and multiple brain-related complex
16 traits and disorders. In 6p21.2, 7p21.1, and 12q24.12 regions, CMR traits were in LD ($r^2 \geq$
17 0.6) with stroke⁹² (such as ischemic stroke, large artery stroke, and small-vessel ischemic
18 stroke), intracranial aneurysm⁹³, and Moyamoya disease⁹⁴ (**Figs. 5A-5B** and **S54**). The
19 index variants of 7p21.1 (rs2107595) and 12q24.12 (rs597808) were expression
20 quantitative trait loci (eQTLs) of *TWIST1*, *ALDH2*, and *NAA25* in human brain tissues⁹⁵,
21 suggesting that these CMR-associated variants were known to affect gene expression
22 levels in human brain. When the GWAS significance threshold was relaxed to 5×10^{-8} , the
23 shared associations (LD $r^2 \geq 0.6$) with stroke were found in four more CMR-significant loci
24 (12q13.3, 16q23.1, 4q25, 7p15.1). CMR traits were also in LD ($r^2 \geq 0.6$) with
25 neurodegenerative and neuropsychiatric disorders, such as in 17q21.31 (rs62062271,
26 brain eQTL of multiple genes such as *CRHR1* and *WNT3*) with Parkinson's disease⁹⁶,
27 corticobasal degeneration⁹⁷, multiple system atrophy⁹⁸, Alzheimer's disease⁹⁹ and
28 associated cognitive impairment¹⁰⁰, autism spectrum disorder¹⁰¹, and progressive
29 supranuclear palsy¹⁰² (**Fig. S92**); in 12p12.1 (rs4148674, brain eQTL of *ABCC9*) with
30 hippocampal sclerosis of aging¹⁰³ (**Fig. S78**); in 15q25.2 (rs11635505, brain eQTL of
31 *UBE2Q2L*, *WDR73*, and *GOLGA6L4*) and 17p13.3 (rs2281727, brain eQTL of *SRR*) with
32 schizophrenia¹⁰⁴ (**Figs. 5C** and **S53**); in 17q12 (rs903503, brain eQTL of multiple genes such

1 as *PGAP3* and *MED24*) and 6q22.31 (rs1334489, brain eQTL of *CEP85L*) with bipolar
2 disorder^{105,106} (**Figs. S86 and S93**); and in 3p14.3 (rs2686630, brain eQTL of *ABHD6*) with
3 eating disorder¹⁰⁷ (**Fig. S94**). In addition, CMR traits were in LD ($r^2 \geq 0.6$) with mental
4 health traits, such as in 16q24.3, 17q21.31, 8p23.1 (rs903503, brain eQTL of multiple
5 genes such as *FAM167A* and *DEFB134*), and 11p11.2 (rs11039348, brain eQTL of multiple
6 genes such as *FAM180B* and *SLC39A13*) with neuroticism¹⁰⁸, depressive symptoms¹⁰⁹,
7 subjective well-being¹¹⁰, and risk-taking tendency¹¹¹ (**Figs. 5D, S92 and S95-S96**). For
8 cognitive traits and education, we tagged 17q21.31, 11p11.2, and 11q13.3 with cognitive
9 function¹¹² and educational attainment¹¹³ (**Figs. S92, S96, and S97**); 7q32.1 (rs2307036,
10 brain eQTL of *ATP6V1FNB*) with reading disability¹¹⁴ (**Fig. S98**); and in 12q24.12 (rs597808,
11 brain eQTL of *ALDH2* and *NAA25*) with reaction time¹¹² (**Fig. S54**). We also found shared
12 associations (LD $r^2 \geq 0.6$) in 11q24.3 (rs11222084, brain eQTL of *ADAMTS8*), 12q24.12
13 (rs7310615, brain eQTL of *ALDH2* and *NAA25*), 17p13.3 (rs10852923, brain eQTL of *SRR*
14 and *SMG6*), 17q12 (rs10852923, brain eQTL of *SRR* and *SMG6*), and 17q21.31 with DTI
15 parameters⁴⁰ (**Figs. S99-S103**); in 11q24.3 (rs7936928, brain eQTL of *ADAMTS8*), 3p13,
16 11p11.2 (rs7107356, brain eQTL of multiple genes such as *FAM180B* and *SLC39A13*),
17 17q21.31 (rs118087478, brain eQTL of multiple genes such as *ARL17A* and *ARL17B*) with
18 regional brain volumes³⁸ (**Fig. 5E and Figs. S104-S106**); and in 15q21.1, 8p23.1
19 (rs10093774, brain eQTL of multiple genes such as *RP1L1* and *FAM167A*), 10q23.33
20 (rs10093774, brain eQTL of *HELLS*), 11q13.3 (rs10093774, brain eQTL of *HELLS*), and
21 17q21.31 (rs62062271, brain eQTL of multiple genes such as *ARL17A* and *LRRC37A2*) with
22 fMRI traits⁴² (**Fig. 5F and Figs. S107-S110**). Furthermore, CMR traits were colocalized with
23 these brain-related complex traits in many regions, such as in 15q25.2 with schizophrenia,
24 in 16q24.3 with neuroticism, in 11q24.3 with cerebrospinal fluid volume, and in 15q21.1
25 with functional connectivity (**Figs. 5C-5F**, PPH4 > 0.890). There is substantial evidence to
26 support the interaction between cardiovascular health status and brain health. For
27 example, people with better heart healthy have better cognitive abilities¹¹⁵ and lower risk
28 for brain disorders, such as stroke and Alzheimer's disease¹¹⁶. In addition, mental health
29 disorders may result in biological processes and behaviors that related to cardiovascular
30 risk factors, such as smoking initiation and physical inactivity^{11,117}. Our results reveal that
31 cardiovascular conditions have substantial genetic overlaps with both mental health and
32 cognitive functions, which may partially explain the heart-brain connections. The majority

1 of shared genetic variants were found to be eQTLs in brain tissues. Future studies are
2 needed to explore the potential genomic pathways and mechanisms underlying the
3 shared genetic influences between heart and brain.

4
5 Genetic overlaps with other diseases and complex traits were also observed. For example,
6 RVEDV is in LD ($r^2 \geq 0.6$) with type 1 diabetes¹¹⁸, T2D¹¹⁹, coronary artery disease⁷⁵, and
7 parental longevity¹²⁰ in the 12q24.12 region (**Fig. S54**). CMR traits were in LD ($r^2 \geq 0.6$)
8 with lung function and diseases in 7 regions, such as in 17q12 with asthma¹²¹ (**Fig. S86**);
9 in 17q21.31 with idiopathic pulmonary fibrosis¹²² and interstitial lung disease¹²³ (**Fig. S92**);
10 and in 10q26.11, 3p22.1, 5q31.1, and 15q23 with lung function (FEV1/FVC)¹²⁴ (**Figs. S64,**
11 **S68, S71, and S81**). We also found shared genetic associations (LD $r^2 \geq 0.6$) in 11p11.2,
12 12q24.12, and 17q12 with smoking¹¹¹ (**Figs. S96, S54, and S86**); and in 17p13.3, 11p11.2,
13 and 17q21.31 with alcohol consumption and alcohol use disorder¹²⁵ (**Figs. S53, S96, and**
14 **S92**). All the above results can be found in **Table S8**.

15

16 **Genetic correlations with brain disorders and complex traits**

17 First, we examined the genetic correlations (GC)¹²⁶ among the 82 CMR traits. Strong
18 genetic correlations were observed within and between categories of CMR traits (**Fig.**
19 **S111**). For example, the RVEDV was genetically correlated with other RV traits, including
20 RVSV and RVESV ($GC > 0.85$, $P < 1.01 \times 10^{-137}$), as well as RVEF ($GC = -0.47$, $P = 4.93 \times 10^{-$
21 ¹⁰). The RVEDV was also significantly correlated with CMR traits from other categories,
22 such as AAO maximum area and DAO maximum area ($GC > 0.38$, $P < 1.36 \times 10^{-13}$), LASV
23 and RASV ($GC > 0.37$, $P < 3.02 \times 10^{-7}$), LVEDV, LVESV, and LVM ($GC > 0.594$, $P < 2.74 \times 10^{-$
24 ³⁵), and LVEF ($GC = -0.55$, $P = 5.25 \times 10^{-20}$). In addition, we found a strong relationship
25 between phenotypic and genetic correlations among all CMR traits ($\beta = 0.751$, $P < 2 \times 10^{-$
26 ¹⁶).

27

28 Next, we examined the genetic correlations between 82 CMR traits and 33 complex traits,
29 many of which were colocalized traits in the above section. At the FDR 5% level (82×33
30 tests), the CMR traits were significantly associated with heart diseases, lung function,
31 cardiovascular risk factors, and brain-related complex traits and diseases (**Table S9**). For
32 example, hypertension had strong genetic correlations with aortic traits and LV traits (**Fig.**

1 **6A**). The strongest correlation between LV traits and hypertension was found in wall
2 thickness traits (GC range = (0.237, 0.406), $P < 6.18 \times 10^{-9}$), which were also significantly
3 associated with coronary artery disease, T2D, and stroke. In addition, atrial fibrillation was
4 significantly associated with aortic, LA, and RA traits ($|GC|$ range = (0.175, 0.252), $P < 7.59$
5 $\times 10^{-4}$), suggesting that atrial fibrillation might have a higher genetic similarity with LA/RA
6 traits than LV/RV traits.

7

8 In both schizophrenia and bipolar disorder, multiple LV traits showed significant genetic
9 correlations. Specifically, on LVCO, LVEF, radial strains, and wall thickness, positive genetic
10 correlations were observed with schizophrenia and bipolar disorder (GC range = (0.122,
11 0.236), $P < 9.37 \times 10^{-3}$). Negative genetic correlations with the two brain disorders were
12 observed on peak circumferential strains (GC range = (-0.168, -0.102), $P < 1.26 \times 10^{-3}$).
13 Additionally, anorexia nervosa (eating disorder) was significant associated with LAV min
14 and LAEF ($|GC|$ range = (0.189, 0.220), $P < 8.11 \times 10^{-3}$) and cognitive traits and neuroticism
15 were mainly associated with right heart traits (RA and RV traits). For example, intelligence
16 was genetically correlated with the RAV max, RAV min, and RVEDV (GC range = (0.08,
17 0.12), $P < 7.10 \times 10^{-3}$). Lung functions (FEV and FVC) had genetic correlations with multiple
18 CMR traits, with longitudinal strains showing the strongest correlations (GC range =
19 (0.296, 0.357), $P < 7.29 \times 10^{-6}$). There were more associations with other complex traits
20 analyzed in previous GWAS, such as smoking, PR interval, blood pressure, education, risky
21 behaviors, lipid traits, mean corpuscular hemoglobin, and mean corpuscular volume (**Fig.**
22 **S112A**). We also found very high genetic correlations with previously reported four LV
23 traits³⁴ (GC > 0.865, $P < 6.28 \times 10^{-99}$) (**Fig. S112B**). In summary, genome-wide genetic
24 similarities have been found between CMR traits and a wide range of complex traits and
25 diseases. Discovering such genetic co-variations may improve our understanding of
26 genetic pathways of clinical outcomes from a multi-organ perspective.

27

28 **Biological and gene level analyses.**

29 We performed gene level association test using GWAS summary statistics of the 82 CMR
30 traits with MAGMA¹²⁷. We identified 160 significant genes for 49 CMR traits ($P < 3.24 \times$
31 10^{-8} , Bonferroni-adjusted for 82 traits) (**Table S10**). Next, we mapped significant variants
32 ($P < 6.09 \times 10^{-10}$) to genes by combining evidence of physical position, eQTL (expression

1 quantitative trait loci) association, and 3D chromatin (Hi-C) interaction via FUMA¹²⁸. We
2 found 576 mapped genes, 434 of which were not identified in MAGMA (**Table S11**).
3 Moreover, 90 MAGMA or FUMA-significant genes had a high probability of being loss-of-
4 function (LoF) intolerant¹²⁹ (pLI > 0.98), indicating significant enrichment of intolerant of
5 LoF variation among these CMR-associated genes ($P = 1.58 \times 10^{-4}$).

6
7 Ten genes (*CACNA11*, *REN*, *ATP1A1*, *CACNB2*, *KCNJ8*, *PDE11A*, *AHR*, *ESR1*, *CYP2C9*, and
8 *ABCC9*) were targets for 32 cardiovascular system drugs¹³⁰, such as 15 calcium channel
9 blockers (anatomical therapeutic chemical (ATC) code: C08) to lower blood pressure, 5
10 cardiac glycosides (C01A) to treat heart failure and irregular heartbeats, and 3
11 antiarrhythmics (C01B) to treat heart rhythm disorders (**Table S12**). Three (*CACNA11*,
12 *ESR1*, and *CYP2C9*) of these 10 genes and 4 more CMR-associated genes (*ALDH2*, *HDAC9*,
13 *NPSR1*, and *TRPA1*) were targets for 11 nervous system drugs, including 4 antiepileptic
14 drugs (N03A) used in the treatment of epileptic seizures and 2 drugs for addictive
15 disorders (N07B). Some drug target genes have known biological functions both in the
16 heart and brain. For example, *ALDH2* plays an important role in clearance of toxic
17 aldehydes, which is an important mechanism related to myocardial and cerebral
18 ischemia/reperfusion injury¹³¹. Therefore, *ALDH2* has been proposed to be a protective
19 target for heart and brain diseases/dysfunctions triggered by ischemic injury and related
20 risk factors^{132,133}. Our results may help identify new drug targets or identify drugs that
21 could be repurposed.

22
23 MAGMA gene-set analysis was performed to prioritize the enriched biological pathways,
24 which yielded 36 significantly enriched gene sets at FDR 5% level ($P < 3.0 \times 10^{-6}$, **Table**
25 **S13**). Multiple pathways related to cardiac development and heart disease were detected,
26 including “go cardiac septum morphogenesis” (Gene Ontology [GO]: 0060411), “go
27 cardiac muscle tissue development” (GO: 0048738), “go cardiac muscle tissue
28 regeneration” (GO: 0061026), “go cardiac chamber development” (GO: 0003205), “go
29 cardiac chamber development” (GO: 0003205), “go cardiac muscle contraction” (GO:
30 0060048), “go cardiac ventricle development” (GO: 0003231), “go vasculogenesis
31 involved in coronary vascular morphogenesis” (GO:0060979), “go adult heart
32 development” (GO: 0007512), “go heart development” (GO: 0007507), and “bruneau

1 septation atrial" (M5223). Finally, we performed partitioned heritability analyses⁶² to
2 identify the tissues and cell types¹³⁴ where genetic variation led to differences in CMR
3 traits. At FDR 5% level, the most significant heritability enrichments were found in active
4 gene regulation regions of heart and muscle tissues, supporting the biological validity of
5 the identified GWAS signals for CMR traits (**Fig. S113**).

6

7 **Complex traits and diseases prediction using genetic and multi-organ MRI data**

8 In this section, we examined the prediction performance of CMR traits for 95 complex
9 traits and diseases. We evaluated the prediction performance in a training, validation,
10 and testing design and removed the effects of age (at imaging), age-squared, sex, age-sex
11 interaction, age-squared-sex interaction, imaging site, height, weight, body mass index,
12 and the top 40 genetic PCs (Methods). At FDR 5% level, the CMR traits had significant
13 prediction power on 44 traits and diseases, including diseases of the circulatory system
14 (ICD-10 group code: "I"); endocrine, nutritional and metabolic diseases (ICD-10: "E");
15 endocrine, nutritional and metabolic diseases (ICD-10: "F"); mental health and cognitive
16 traits; cardiovascular diseases (self-reported), biomarkers, and risk factors; and disease
17 family history (prediction correlation range = (0.028, 0.5), P range = (1.60×10^{-2} , $5.05 \times$
18 10^{-234}), **Fig. S114**). For example, CMR traits significantly predicted 14 circulatory system
19 diseases, including atrial fibrillation, essential (primary) hypertension, angina pectoris,
20 atherosclerotic heart disease, old myocardial infarction, chronic ischaemic heart disease,
21 and acute myocardial infarction ($\beta > 0.097$, $P < 4.99 \times 10^{-17}$). They also had high prediction
22 power for cardiovascular risk factors, such as systolic blood pressure ($\beta = 0.367$, $P = 3.96$
23 $\times 10^{-219}$) and diabetes (self-reported) ($\beta = 0.114$, $P = 9.50 \times 10^{-23}$). Moreover, CMR traits
24 can predict brain-related psychological factors and cognitive traits, such as risk-taking (β
25 $= 0.068$, $P = 4.81 \times 10^{-9}$), depression ($\beta = 0.046$, $P = 7.48 \times 10^{-5}$), and fluid intelligence ($\beta =$
26 0.091 , $P = 5.08 \times 10^{-15}$).

27

28 Next, we performed joint prediction with genetic PRS (Methods). In comparison to
29 genetic PRS, CMR traits may be more accurate and provide additional insights when
30 predicting heart diseases (**Fig. 6B**). For example, the correlation between genetic PRS and
31 atrial fibrillation was 0.084 ($P = 1.14 \times 10^{-7}$), suggesting that about 0.7% disease variation
32 can be predicted by genetic profile. The prediction correlation of CMR traits was 0.265 (P

1 = 2.78×10^{-65}), which was comparable to the performance when using both CMR traits
2 and genetic PRS ($\beta = 0.276$, $P = 1.20 \times 10^{-70}$). These results illustrate that CMR traits had
3 much higher prediction accuracy and suggest that most of the genetic prediction power
4 on atrial fibrillation might be mediated through cardiac conditions captured by CMR
5 traits.

6

7 We also found that combining genetic PRS, CMR traits, and brain MRI traits can improve
8 the prediction of multi-system diseases, such as diabetes (**Fig. 6C**). The prediction
9 correlation of diabetes was 0.084 ($P = 1.11 \times 10^{-7}$) for genetic PRS and 0.077 ($P = 1.13 \times$
10 10^{-6}) for CMR traits. Multiple categories of brain MRI traits also had significant prediction
11 power on diabetes, including DTI parameters ($\beta = 0.094$, $P = 3.01 \times 10^{-9}$), regional brain
12 volumes ($\beta = 0.076$, $P = 1.47 \times 10^{-6}$), resting fMRI ($\beta = 0.055$, $P = 4.85 \times 10^{-4}$), and task fMRI
13 ($\beta = 0.045$, $P = 4.46 \times 10^{-3}$). The prediction performance was improved to 0.10 ($P = 3.84 \times$
14 10^{-10}) by using all CMR and brain MRI traits and further moved up to 0.125 ($P = 2.17 \times 10^{-$
15 15) when adding genetic PRS. In summary, imaging traits could make a unique contribution
16 to the prediction of complex traits and diseases. Multi-organ imaging and genetic PRS can
17 be integrated to improve risk prediction and patient care.

18

19 **DISCUSSION**

20 The intertwined connections between heart and brain health are gaining increasing
21 attention. This study quantified the heart-brain associations using CMR and brain MRI
22 data from over 40,000 individuals in one homogeneous study cohort (the UK Biobank).
23 Based on this unique dataset, we identified phenotypic heart-brain connections and
24 discovered patterns of enrichment in specific brain regions and functional networks. We
25 further examined the effects of cardiovascular risk factors on the brain mediated by
26 cardiac conditions. GWAS identified 80 genomic loci for CMR traits, many of which were
27 colocalized with neuropsychiatric and neurological disorders, mental health factors, and
28 brain MRI traits. Integrating traditional genetic PRS with imaging traits can also improve
29 the risk prediction of human diseases. In summary, multiple lines of evidence point to the
30 close phenotypic and genetic relationship between heart health and brain health.

31

1 Using multi-organ imaging data as endophenotypes, we identified genetic variations that
2 can affect both heart and brain functions. Interpreting the genetic pleiotropy and
3 understanding how human organs interact in a directional and even bidirectional manner
4 is challenging¹¹. We have adjusted for height, weight, and body mass index in our analysis
5 to avoid confounding effects of body size. However, unobserved biological interactions
6 and environmental factors may also confound heart-brain connections. Pleiotropy
7 analysis across organ systems is a relatively new concept, so future research using
8 additional data resources (for example, long-term longitudinal data and large-scale
9 genomics data from multiple organs) may better reveal the shared biology between the
10 brain and heart.

11

12 In this study, imaging data were mainly from European ancestry. Comparing UKB GWAS
13 results with those of BBJ, both similarities and differences were found for genetic
14 influences on CMR traits. For example, participants in UKB and BBJ had similar genetic
15 effects on cardiac conditions at 22q11.23 and 8q24.13, but only the BBJ cohort had
16 significant genetic effects at 11p15.1. It can be expected that some of the genetic
17 components that underlie heart-brain connections may also be population-specific. More
18 heart and brain imaging data collected from global populations may enable the
19 development of a better picture of neuro-cardiac interactions.

20

21 This paper specifically focused on heart-brain connections. Because of the large amount
22 of data collected in the UKB study, it is also possible to study the relationships between
23 brain and other human organs and systems. For example, increasing evidence supports
24 the gut-brain axis, which involves complex interactions between the central nervous
25 system and the enteric nervous system¹³⁵. Patients with inflammatory bowel disease
26 (such as Crohn's disease) show altered brain structure and function¹³⁶, impaired cognitive
27 functions¹³⁷, and a higher risk of depression and anxiety¹³⁸. Multi-system analysis using
28 biobank-scale data may provide insights for inter-organ pathophysiological mechanisms
29 and prevention and early detection of brain diseases.

30

31 **METHODS**

32 Methods are available in the *Methods* section.

1 *Note: One supplementary information pdf file, one supplementary figure pdf file, and one*
2 *supplementary table zip file are available.*

3

4 **ACKNOWLEDGEMENTS**

5 This research was partially supported by U.S. NIH grants MH086633 (H.Z.) and MH116527
6 (TF.L.). We thank the individuals represented in the UK Biobank for their participation and
7 the research teams for their work in collecting, processing and disseminating these
8 datasets for analysis. We would like to thank the University of North Carolina at Chapel
9 Hill and Purdue University and their Research Computing groups for providing
10 computational resources and support that have contributed to these research results. We
11 gratefully acknowledge all the studies and databases that made GWAS and eQTL
12 summary-level data publicly available. This research has been conducted using the UK
13 Biobank resource (application number 22783), subject to a data transfer agreement.

14

15 **AUTHOR CONTRIBUTIONS**

16 B.Z., H.Z., J.S., and Y.L. designed the study. B.Z., TF.L., Z.F., Y.Y., X.W. TY. L, J.T., D.X., and
17 Z.W. analyzed the data. TF.L., Y.Y., J.T., X.W., D.X., TY. L, J.C., Y.S., C.T., and Z.Z. processed
18 heart imaging data and undertook quantity controls. B.Z. wrote the manuscript with
19 feedback from all authors.

20

21 **CORRESPONDENCE AND REQUESTS FOR MATERIALS** should be addressed to H.Z.

22

23 **COMPETING FINANCIAL INTERESTS**

24 The authors declare no competing financial interests.

25

26 **REFERENCES**

- 27 1. Gardener, H., Wright, C.B., Rundek, T. & Sacco, R.L. Brain health and shared risk
28 factors for dementia and stroke. *Nature Reviews Neurology* **11**, 651-657 (2015).
- 29 2. Broce, I.J. *et al.* Dissecting the genetic relationship between cardiovascular risk
30 factors and Alzheimer's disease. *Acta neuropathologica* **137**, 209-226 (2019).
- 31 3. Moroni, F. *et al.* Cardiovascular disease and brain health: Focus on white matter
32 hyperintensities. *IJC heart & vasculature* **19**, 63-69 (2018).

- 1 4. Abete, P. *et al.* Cognitive impairment and cardiovascular diseases in the elderly.
2 A heart–brain continuum hypothesis. *Ageing research reviews* **18**, 41-52 (2014).
- 3 5. Kumar, R. *et al.* Reduced regional brain cortical thickness in patients with heart
4 failure. *PloS one* **10**, e0126595 (2015).
- 5 6. Kwok, C., Loke, Y., Hale, R., Potter, J. & Myint, P. Atrial fibrillation and incidence
6 of dementia: a systematic review and meta-analysis. *Neurology* **76**, 914-922
7 (2011).
- 8 7. Kobayashi, A., Iguchi, M., Shimizu, S. & Uchiyama, S. Silent cerebral infarcts and
9 cerebral white matter lesions in patients with nonvalvular atrial fibrillation.
10 *Journal of Stroke and Cerebrovascular Diseases* **21**, 310-317 (2012).
- 11 8. Kim, D. *et al.* Risk of dementia in stroke-free patients diagnosed with atrial
12 fibrillation: data from a population-based cohort. *European heart journal* **40**,
13 2313-2323 (2019).
- 14 9. Vogels, R.L., Scheltens, P., Schroeder-Tanka, J.M. & Weinstein, H.C. Cognitive
15 impairment in heart failure: a systematic review of the literature. *European*
16 *journal of heart failure* **9**, 440-449 (2007).
- 17 10. Meng, L., Hou, W., Chui, J., Han, R. & Gelb, A.W. Cardiac output and cerebral
18 blood flow: the integrated regulation of brain perfusion in adult humans.
19 *Anesthesiology* **123**, 1198-1208 (2015).
- 20 11. Levine, G.N. *et al.* Psychological health, well-being, and the mind-heart-body
21 connection: a scientific statement from the American Heart Association.
22 *Circulation* **143**, e763-e783 (2021).
- 23 12. Glaser, R. & Kiecolt-Glaser, J.K. Stress-induced immune dysfunction: implications
24 for health. *Nature Reviews Immunology* **5**, 243-251 (2005).
- 25 13. Jindal, R., MacKenzie, E.M., Baker, G.B. & Yeragani, V.K. Cardiac risk and
26 schizophrenia. *Journal of Psychiatry and Neuroscience* **30**, 393 (2005).
- 27 14. Nielsen, R.E., Banner, J. & Jensen, S.E. Cardiovascular disease in patients with
28 severe mental illness. *Nature Reviews Cardiology* **18**, 136-145 (2021).
- 29 15. Tawakol, A. *et al.* Relation between resting amygdalar activity and cardiovascular
30 events: a longitudinal and cohort study. *The Lancet* **389**, 834-845 (2017).
- 31 16. Nahrendorf, M. Myeloid cell contributions to cardiovascular health and disease.
32 *Nature medicine* **24**, 711-720 (2018).

- 1 17. Hinterdobler, J. *et al.* Acute mental stress drives vascular inflammation and
2 promotes plaque destabilization in mouse atherosclerosis. *European Heart*
3 *Journal* (2021).
- 4 18. Petersen, S.E. *et al.* UK Biobank's cardiovascular magnetic resonance protocol.
5 *Journal of cardiovascular magnetic resonance* **18**, 1-7 (2015).
- 6 19. Littlejohns, T.J., Sudlow, C., Allen, N.E. & Collins, R. UK Biobank: opportunities for
7 cardiovascular research. *European heart journal* **40**, 1158-1166 (2019).
- 8 20. Raisi-Estabragh, Z., Harvey, N.C., Neubauer, S. & Petersen, S.E. Cardiovascular
9 magnetic resonance imaging in the UK Biobank: a major international health
10 research resource. *European Heart Journal-Cardiovascular Imaging* **22**, 251-258
11 (2021).
- 12 21. Miller, K.L. *et al.* Multimodal population brain imaging in the UK Biobank
13 prospective epidemiological study. *Nature Neuroscience* **19**, 1523-1536 (2016).
- 14 22. Lee, M.H., Smyser, C.D. & Shimony, J.S. Resting-state fMRI: a review of methods
15 and clinical applications. *American Journal of neuroradiology* **34**, 1866-1872
16 (2013).
- 17 23. Thompson, P.M. *et al.* ENIGMA and global neuroscience: A decade of large-scale
18 studies of the brain in health and disease across more than 40 countries.
19 *Translational psychiatry* **10**, 1-28 (2020).
- 20 24. Frisoni, G.B., Fox, N.C., Jack, C.R., Scheltens, P. & Thompson, P.M. The clinical use
21 of structural MRI in Alzheimer disease. *Nature Reviews Neurology* **6**, 67-77
22 (2010).
- 23 25. Adhikari, B.M. *et al.* Heritability estimates on resting state fMRI data using
24 ENIGMA analysis pipeline. (2018).
- 25 26. Colclough, G.L. *et al.* The heritability of multi-modal connectivity in human brain
26 activity. *Elife* **6**, e20178 (2017).
- 27 27. Busjahn, C.A. *et al.* Heritability of left ventricular and papillary muscle heart size:
28 a twin study with cardiac magnetic resonance imaging. *European heart journal*
29 **30**, 1643-1647 (2009).
- 30 28. Chien, K.-L., Hsu, H.-C., Su, T.-C., Chen, M.-F. & Lee, Y.-T. Heritability and major
31 gene effects on left ventricular mass in the Chinese population: a family study.
32 *BMC cardiovascular disorders* **6**, 1-9 (2006).

- 1 29. Jansen, A.G., Mous, S.E., White, T., Posthuma, D. & Polderman, T.J. What twin
2 studies tell us about the heritability of brain development, morphology, and
3 function: a review. *Neuropsychology Review* **25**, 27-46 (2015).
- 4 30. Foo, H. *et al.* Genetic influence on ageing-related changes in resting-state brain
5 functional networks in healthy adults: a systematic review. *Neuroscience &*
6 *Biobehavioral Reviews* (2020).
- 7 31. Aung, N. *et al.* Genome-wide analysis of left ventricular image-derived
8 phenotypes identifies fourteen loci associated with cardiac morphogenesis and
9 heart failure development. *Circulation* **140**, 1318-1330 (2019).
- 10 32. Córdova-Palomera, A. *et al.* Cardiac Imaging of Aortic Valve Area From 34 287 UK
11 Biobank Participants Reveals Novel Genetic Associations and Shared Genetic
12 Comorbidity With Multiple Disease Phenotypes. *Circulation: Genomic and*
13 *Precision Medicine* **13**, e003014 (2020).
- 14 33. Meyer, H.V. *et al.* Genetic and functional insights into the fractal structure of the
15 heart. *Nature* **584**, 589-594 (2020).
- 16 34. Pirruccello, J.P. *et al.* Analysis of cardiac magnetic resonance imaging in 36,000
17 individuals yields genetic insights into dilated cardiomyopathy. *Nature*
18 *communications* **11**, 1-10 (2020).
- 19 35. Pirruccello, J.P. *et al.* Genetic Analysis of Right Heart Structure and Function in
20 40,000 People. *bioRxiv* (2021).
- 21 36. Thanaj, M. *et al.* Genetic and environmental determinants of diastolic heart
22 function. *medRxiv* (2021).
- 23 37. Elliott, L.T. *et al.* Genome-wide association studies of brain imaging phenotypes
24 in UK Biobank. *Nature* **562**, 210-216 (2018).
- 25 38. Zhao, B. *et al.* Genome-wide association analysis of 19,629 individuals identifies
26 variants influencing regional brain volumes and refines their genetic co-
27 architecture with cognitive and mental health traits. *Nature genetics* **51**, 1637-
28 1644 (2019).
- 29 39. Smith, S.M. *et al.* An expanded set of genome-wide association studies of brain
30 imaging phenotypes in UK Biobank. *Nature neuroscience* **24**, 737-745 (2021).
- 31 40. Zhao, B. *et al.* Common genetic variation influencing human white matter
32 microstructure. *Science* **372**(2021).

- 1 41. Grasby, K.L. *et al.* The genetic architecture of the human cerebral cortex. *Science*
2 **367**(2020).
- 3 42. Zhao, B. *et al.* Genetic influences on the intrinsic and extrinsic functional
4 organizations of the cerebral cortex. *medRxiv* (2021).
- 5 43. Bai, W. *et al.* A population-based phenome-wide association study of cardiac and
6 aortic structure and function. *Nature Medicine* **26**, 1654-1662 (2020).
- 7 44. Zhao, B. *et al.* Large-scale GWAS reveals genetic architecture of brain white
8 matter microstructure and genetic overlap with cognitive and mental health
9 traits (n = 17,706). *Molecular Psychiatry* (2019).
- 10 45. Matoba, N. & Stein, J.L. From base pair to brain. *Nature Neuroscience* **24**, 619-
11 621 (2021).
- 12 46. Wolf, P.A. Contributions of the Framingham Heart Study to stroke and dementia
13 epidemiologic research at 60 years. *Archives of neurology* **69**, 567-571 (2012).
- 14 47. Hofman, A. *et al.* The Rotterdam Study: 2016 objectives and design update.
15 *European journal of epidemiology* **30**, 661-708 (2015).
- 16 48. Bi, X. *et al.* Genome-wide mediation analysis of psychiatric and cognitive traits
17 through imaging phenotypes. *Human brain mapping* **38**, 4088-4097 (2017).
- 18 49. Yano, Y. *et al.* Association of cognitive dysfunction with cardiovascular disease
19 events in elderly hypertensive patients. *Journal of hypertension* **32**, 423-431
20 (2014).
- 21 50. Prins, N.D. & Scheltens, P. White matter hyperintensities, cognitive impairment
22 and dementia: an update. *Nature Reviews Neurology* **11**, 157-165 (2015).
- 23 51. Kim, B. & Feldman, E.L. Insulin resistance as a key link for the increased risk of
24 cognitive impairment in the metabolic syndrome. *Experimental & molecular*
25 *medicine* **47**, e149-e149 (2015).
- 26 52. Garfield, V. *et al.* HbA1c and brain health across the entire glycaemic spectrum.
27 *Diabetes, Obesity and Metabolism* **23**, 1140-1149 (2021).
- 28 53. Biessels, G.J., Nobili, F., Teunissen, C.E., Simó, R. & Scheltens, P. Understanding
29 multifactorial brain changes in type 2 diabetes: a biomarker perspective. *The*
30 *Lancet Neurology* **19**, 699-710 (2020).

- 1 54. Ryan, C.M. & Geckle, M. Why is learning and memory dysfunction in Type 2
2 diabetes limited to older adults? *Diabetes/metabolism research and reviews* **16**,
3 308-315 (2000).
- 4 55. Mergenthaler, P., Lindauer, U., Dienel, G.A. & Meisel, A. Sugar for the brain: the
5 role of glucose in physiological and pathological brain function. *Trends in*
6 *neurosciences* **36**, 587-597 (2013).
- 7 56. Rajagopalan, P. *et al.* Mapping creatinine-and cystatin C-related white matter
8 brain deficits in the elderly. *Neurobiology of aging* **34**, 1221-1230 (2013).
- 9 57. Fang, P., Li, X., Luo, J.J., Wang, H. & Yang, X.-f. A double-edged sword: uric acid
10 and neurological disorders. *Brain disorders & therapy* **2**, 109 (2013).
- 11 58. Tang, Z. *et al.* Association between gamma-glutamyl transferase and mild
12 cognitive impairment in Chinese women. *Frontiers in aging neuroscience* **13**, 14
13 (2021).
- 14 59. Yang, J., Lee, S.H., Goddard, M.E. & Visscher, P.M. GCTA: a tool for genome-wide
15 complex trait analysis. *The American Journal of Human Genetics* **88**, 76-82
16 (2011).
- 17 60. Bulik-Sullivan, B.K. *et al.* LD Score regression distinguishes confounding from
18 polygenicity in genome-wide association studies. *Nature genetics* **47**, 291-295
19 (2015).
- 20 61. Timpson, N.J., Greenwood, C.M.T., Soranzo, N., Lawson, D.J. & Richards, J.B.
21 Genetic architecture: the shape of the genetic contribution to human traits and
22 disease. *Nature Reviews Genetics* **19**, 110-124 (2017).
- 23 62. Finucane, H.K. *et al.* Partitioning heritability by functional annotation using
24 genome-wide association summary statistics. *Nature genetics* **47**, 1228-1235
25 (2015).
- 26 63. Kanai, M. *et al.* Genetic analysis of quantitative traits in the Japanese population
27 links cell types to complex human diseases. *Nature genetics* **50**, 390-400 (2018).
- 28 64. Mak, T.S.H., Porsch, R.M., Choi, S.W., Zhou, X. & Sham, P.C. Polygenic scores via
29 penalized regression on summary statistics. *Genetic epidemiology* **41**, 469-480
30 (2017).

- 1 65. Zhao, B. & Zhu, H. Cross-trait prediction accuracy of high-dimensional ridge-type
2 estimators in genome-wide association studies. *arXiv preprint arXiv:1911.10142*
3 (2019).
- 4 66. Wang, Y. *et al.* Theoretical and empirical quantification of the accuracy of
5 polygenic scores in ancestry divergent populations. *Nature communications* **11**,
6 1-9 (2020).
- 7 67. Buniello, A. *et al.* The NHGRI-EBI GWAS Catalog of published genome-wide
8 association studies, targeted arrays and summary statistics 2019. *Nucleic Acids*
9 *Research* **47**, D1005-D1012 (2018).
- 10 68. Giambartolomei, C. *et al.* Bayesian test for colocalisation between pairs of
11 genetic association studies using summary statistics. *PLoS genetics* **10**, e1004383
12 (2014).
- 13 69. Kibinge, N.K., Relton, C.L., Gaunt, T.R. & Richardson, T.G. Characterizing the
14 causal pathway for genetic variants associated with neurological phenotypes
15 using human brain-derived proteome data. *The American Journal of Human*
16 *Genetics* **106**, 885-892 (2020).
- 17 70. Wild, P.S. *et al.* Large-scale genome-wide analysis identifies genetic variants
18 associated with cardiac structure and function. *The Journal of clinical*
19 *investigation* **127**, 1798-1812 (2017).
- 20 71. Pfeufer, A. *et al.* Genome-wide association study of PR interval. *Nature genetics*
21 **42**, 153-159 (2010).
- 22 72. Prins, B.P. *et al.* Exome-chip meta-analysis identifies novel loci associated with
23 cardiac conduction, including ADAMTS6. *Genome biology* **19**, 1-17 (2018).
- 24 73. LeMaire, S.A. *et al.* Genome-wide association study identifies a susceptibility
25 locus for thoracic aortic aneurysms and aortic dissections spanning FBN1 at
26 15q21. 1. *Nature genetics* **43**, 996-1000 (2011).
- 27 74. Nikpay, M. *et al.* A comprehensive 1000 Genomes-based genome-wide
28 association meta-analysis of coronary artery disease. *Nature genetics* **47**, 1121
29 (2015).
- 30 75. Nelson, C.P. *et al.* Association analyses based on false discovery rate implicate
31 new loci for coronary artery disease. *Nature genetics* **49**, 1385-1391 (2017).

- 1 76. Nielsen, J.B. *et al.* Biobank-driven genomic discovery yields new insight into atrial
2 fibrillation biology. *Nature genetics* **50**, 1234-1239 (2018).
- 3 77. Roselli, C. *et al.* Multi-ethnic genome-wide association study for atrial fibrillation.
4 *Nature genetics* **50**, 1225-1233 (2018).
- 5 78. Ehret, G.B. *et al.* Genetic variants in novel pathways influence blood pressure
6 and cardiovascular disease risk. *Nature* **478**, 103-109 (2011).
- 7 79. Takeuchi, F. *et al.* Interethnic analyses of blood pressure loci in populations of
8 East Asian and European descent. *Nature communications* **9**, 1-16 (2018).
- 9 80. Jones, G.T. *et al.* Meta-analysis of genome-wide association studies for
10 abdominal aortic aneurysm identifies four new disease-specific risk loci.
11 *Circulation research* **120**, 341-353 (2017).
- 12 81. van't Hof, F.N. *et al.* Shared genetic risk factors of intracranial, abdominal, and
13 thoracic aneurysms. *Journal of the American Heart Association* **5**, e002603
14 (2016).
- 15 82. Dina, C. *et al.* Genetic association analyses highlight biological pathways
16 underlying mitral valve prolapse. *Nature genetics* **47**, 1206-1211 (2015).
- 17 83. Villard, E. *et al.* A genome-wide association study identifies two loci associated
18 with heart failure due to dilated cardiomyopathy. *European heart journal* **32**,
19 1065-1076 (2011).
- 20 84. Giri, A. *et al.* Trans-ethnic association study of blood pressure determinants in
21 over 750,000 individuals. *Nature genetics* **51**, 51-62 (2019).
- 22 85. Feitosa, M.F. *et al.* Novel genetic associations for blood pressure identified via
23 gene-alcohol interaction in up to 570K individuals across multiple ancestries.
24 *PloS one* **13**, e0198166 (2018).
- 25 86. Shin, S.-Y. *et al.* An atlas of genetic influences on human blood metabolites.
26 *Nature genetics* **46**, 543-550 (2014).
- 27 87. Klarin, D. *et al.* Genetics of blood lipids among~ 300,000 multi-ethnic participants
28 of the Million Veteran Program. *Nature genetics* **50**, 1514-1523 (2018).
- 29 88. Teslovich, T.M. *et al.* Biological, clinical and population relevance of 95 loci for
30 blood lipids. *Nature* **466**, 707-713 (2010).
- 31 89. Astle, W.J. *et al.* The allelic landscape of human blood cell trait variation and links
32 to common complex disease. *Cell* **167**, 1415-1429. e19 (2016).

- 1 90. Emilsson, V. *et al.* Co-regulatory networks of human serum proteins link genetics
2 to disease. *Science* **361**, 769-773 (2018).
- 3 91. Pilling, L.C. *et al.* Red blood cell distribution width: genetic evidence for aging
4 pathways in 116,666 volunteers. *PLoS One* **12**, e0185083 (2017).
- 5 92. Malik, R. *et al.* Multiancestry genome-wide association study of 520,000 subjects
6 identifies 32 loci associated with stroke and stroke subtypes. *Nature genetics* **50**,
7 524-537 (2018).
- 8 93. Foroud, T. *et al.* Genome-wide association study of intracranial aneurysm
9 identifies a new association on chromosome 7. *Stroke* **45**, 3194-3199 (2014).
- 10 94. Duan, L. *et al.* Novel susceptibility loci for moyamoya disease revealed by a
11 genome-wide association study. *Stroke* **49**, 11-18 (2018).
- 12 95. de Klein, N. *et al.* Brain expression quantitative trait locus and network analysis
13 reveals downstream effects and putative drivers for brain-related diseases.
14 *bioRxiv* (2021).
- 15 96. Simon-Sanchez, J. *et al.* Genome-wide association study reveals genetic risk
16 underlying Parkinson's disease. *Nature genetics* **41**, 1308-1312 (2009).
- 17 97. Kouri, N. *et al.* Genome-wide association study of corticobasal degeneration
18 identifies risk variants shared with progressive supranuclear palsy. *Nature*
19 *communications* **6**, 7247 (2015).
- 20 98. Sailer, A. *et al.* A genome-wide association study in multiple system atrophy.
21 *Neurology* **87**, 1591-1598 (2016).
- 22 99. Kamboh, M. *et al.* Genome-wide association study of Alzheimer's disease.
23 *Translational Psychiatry* **2**, e117 (2012).
- 24 100. Mukherjee, S. *et al.* Genetic data and cognitively defined late-onset Alzheimer's
25 disease subgroups. *Molecular psychiatry* **25**, 2942-2951 (2020).
- 26 101. Grove, J. *et al.* Identification of common genetic risk variants for autism
27 spectrum disorder. *Nature genetics* **51**, 431 (2019).
- 28 102. Höglinger, G.U. *et al.* Identification of common variants influencing risk of the
29 tauopathy progressive supranuclear palsy. *Nature genetics* **43**, 699-705 (2011).
- 30 103. Nelson, P.T. *et al.* ABCC9 gene polymorphism is associated with hippocampal
31 sclerosis of aging pathology. *Acta neuropathologica* **127**, 825-843 (2014).

- 1 104. Pardiñas, A.F. *et al.* Common schizophrenia alleles are enriched in mutation-
2 intolerant genes and in regions under strong background selection. *Nature*
3 *Genetics* **50**, 381–389 (2018).
- 4 105. van Hulzen, K.J. *et al.* Genetic overlap between attention-deficit/hyperactivity
5 disorder and bipolar disorder: evidence from genome-wide association study
6 meta-analysis. *Biological psychiatry* **82**, 634-641 (2017).
- 7 106. Hou, L. *et al.* Genome-wide association study of 40,000 individuals identifies two
8 novel loci associated with bipolar disorder. *Human molecular genetics* **25**, 3383-
9 3394 (2016).
- 10 107. Wade, T.D. *et al.* Genetic variants associated with disordered eating.
11 *International Journal of Eating Disorders* **46**, 594-608 (2013).
- 12 108. Nagel, M. *et al.* Meta-analysis of genome-wide association studies for
13 neuroticism in 449,484 individuals identifies novel genetic loci and pathways.
14 *Nature Genetics* **50**, 920 (2018).
- 15 109. Baselmans, B.M. *et al.* Multivariate genome-wide analyses of the well-being
16 spectrum. *Nature genetics* **51**, 445-451 (2019).
- 17 110. Okbay, A. *et al.* Genetic variants associated with subjective well-being,
18 depressive symptoms, and neuroticism identified through genome-wide
19 analyses. *Nature Genetics* **48**, 624–633 (2016).
- 20 111. Linnér, R.K. *et al.* Genome-wide association analyses of risk tolerance and risky
21 behaviors in over 1 million individuals identify hundreds of loci and shared
22 genetic influences. *Nature Genetics* **51**, 245-257 (2019).
- 23 112. Davies, G. *et al.* Study of 300,486 individuals identifies 148 independent genetic
24 loci influencing general cognitive function. *Nature Communications* **9**, 2098
25 (2018).
- 26 113. Lee, J.J. *et al.* Gene discovery and polygenic prediction from a genome-wide
27 association study of educational attainment in 1.1 million individuals. *Nature*
28 *Genetics* **50**, 1112–1121 (2018).
- 29 114. Gialluisi, A. *et al.* Genome-wide screening for DNA variants associated with
30 reading and language traits. *Genes, Brain and Behavior* **13**, 686-701 (2014).

- 1 115. Raisi-Estabragh, Z. *et al.* Associations of cognitive performance with
2 cardiovascular magnetic resonance phenotypes in the UK Biobank. *European*
3 *Heart Journal-Cardiovascular Imaging* (2021).
- 4 116. Gottesman, R.F. *et al.* Associations between midlife vascular risk factors and 25-
5 year incident dementia in the Atherosclerosis Risk in Communities (ARIC) cohort.
6 *JAMA neurology* **74**, 1246-1254 (2017).
- 7 117. Vaccarino, V. *et al.* Brain-heart connections in stress and cardiovascular disease:
8 Implications for the cardiac patient. *Atherosclerosis* (2021).
- 9 118. Barrett, J.C. *et al.* Genome-wide association study and meta-analysis find that
10 over 40 loci affect risk of type 1 diabetes. *Nature genetics* **41**, 703-707 (2009).
- 11 119. Cousminer, D.L. *et al.* First genome-wide association study of latent autoimmune
12 diabetes in adults reveals novel insights linking immune and metabolic diabetes.
13 *Diabetes Care* **41**, 2396-2403 (2018).
- 14 120. Pilling, L.C. *et al.* Human longevity: 25 genetic loci associated in 389,166 UK
15 biobank participants. *Aging (Albany NY)* **9**, 2504 (2017).
- 16 121. Demenais, F. *et al.* Multiancestry association study identifies new asthma risk
17 loci that colocalize with immune-cell enhancer marks. *Nature genetics* **50**, 42-53
18 (2018).
- 19 122. Noth, I. *et al.* Genetic variants associated with idiopathic pulmonary fibrosis
20 susceptibility and mortality: a genome-wide association study. *The Lancet*
21 *respiratory medicine* **1**, 309-317 (2013).
- 22 123. Fingerlin, T.E. *et al.* Genome-wide association study identifies multiple
23 susceptibility loci for pulmonary fibrosis. *Nature genetics* **45**, 613-620 (2013).
- 24 124. Shrine, N. *et al.* New genetic signals for lung function highlight pathways and
25 chronic obstructive pulmonary disease associations across multiple ancestries.
26 *Nature genetics* **51**, 481-493 (2019).
- 27 125. Liu, M. *et al.* Association studies of up to 1.2 million individuals yield new insights
28 into the genetic etiology of tobacco and alcohol use. *Nature genetics* **51**, 237-244
29 (2019).
- 30 126. Bulik-Sullivan, B. *et al.* An atlas of genetic correlations across human diseases
31 and traits. *Nature Genetics* **47**, 1236-1241 (2015).

- 1 127. de Leeuw, C.A., Mooij, J.M., Heskes, T. & Posthuma, D. MAGMA: generalized
2 gene-set analysis of GWAS data. *PLoS Computational Biology* **11**, e1004219
3 (2015).
- 4 128. Watanabe, K., Taskesen, E., Bochoven, A. & Posthuma, D. Functional mapping
5 and annotation of genetic associations with FUMA. *Nature Communications* **8**,
6 1826 (2017).
- 7 129. Lek, M. *et al.* Analysis of protein-coding genetic variation in 60,706 humans.
8 *Nature* **536**, 285 (2016).
- 9 130. Wang, Q. *et al.* A Bayesian framework that integrates multi-omics data and gene
10 networks predicts risk genes from schizophrenia GWAS data. *Nature*
11 *neuroscience* **22**, 691 (2019).
- 12 131. Luo, X.-J., Liu, B., Ma, Q.-L. & Peng, J. Mitochondrial aldehyde dehydrogenase, a
13 potential drug target for protection of heart and brain from
14 ischemia/reperfusion injury. *Current drug targets* **15**, 948-955 (2014).
- 15 132. Pang, J., Wang, J., Zhang, Y., Xu, F. & Chen, Y. Targeting acetaldehyde
16 dehydrogenase 2 (ALDH2) in heart failure—recent insights and perspectives.
17 *Biochimica et Biophysica Acta (BBA)-Molecular Basis of Disease* **1863**, 1933-1941
18 (2017).
- 19 133. Chen, C.-H., Ferreira, J.C.B., Gross, E.R. & Mochly-Rosen, D. Targeting aldehyde
20 dehydrogenase 2: new therapeutic opportunities. *Physiological reviews* **94**, 1-34
21 (2014).
- 22 134. Kundaje, A. *et al.* Integrative analysis of 111 reference human epigenomes.
23 *Nature* **518**, 317 (2015).
- 24 135. Carabotti, M., Scirocco, A., Maselli, M.A. & Severi, C. The gut-brain axis:
25 interactions between enteric microbiota, central and enteric nervous systems.
26 *Annals of gastroenterology: quarterly publication of the Hellenic Society of*
27 *Gastroenterology* **28**, 203 (2015).
- 28 136. Hou, J. *et al.* Alterations in brain white matter microstructural properties in
29 patients with Crohn's disease in remission. *Scientific reports* **10**, 1-9 (2020).
- 30 137. Clarke, G. *et al.* Impaired cognitive function in Crohn's disease: Relationship to
31 disease activity. *Brain, Behavior, & Immunity-Health* **5**, 100093 (2020).

- 1 138. Barberio, B., Zamani, M., Black, C.J., Savarino, E.V. & Ford, A.C. Prevalence of
2 symptoms of anxiety and depression in patients with inflammatory bowel
3 disease: a systematic review and meta-analysis. *The Lancet Gastroenterology &*
4 *Hepatology* (2021).
- 5 139. Avants, B.B. *et al.* A reproducible evaluation of ANTs similarity metric
6 performance in brain image registration. *Neuroimage* **54**, 2033-2044 (2011).
- 7 140. Jahanshad, N. *et al.* Multi-site genetic analysis of diffusion images and voxelwise
8 heritability analysis: A pilot project of the ENIGMA-DTI working group.
9 *Neuroimage* **81**, 455-469 (2013).
- 10 141. Kochunov, P. *et al.* Multi-site study of additive genetic effects on fractional
11 anisotropy of cerebral white matter: comparing meta and megaanalytical
12 approaches for data pooling. *Neuroimage* **95**, 136-150 (2014).
- 13 142. Glasser, M.F. *et al.* A multi-modal parcellation of human cerebral cortex. *Nature*
14 **536**, 171-178 (2016).
- 15 143. Ji, J.L. *et al.* Mapping the human brain's cortical-subcortical functional network
16 organization. *Neuroimage* **185**, 35-57 (2019).
- 17 144. Littlejohns, T.J. *et al.* The UK Biobank imaging enhancement of 100,000
18 participants: rationale, data collection, management and future directions.
19 *Nature communications* **11**, 1-12 (2020).
- 20 145. Jiang, L. *et al.* A resource-efficient tool for mixed model association analysis of
21 large-scale data. *Nature genetics* **51**, 1749 (2019).
- 22 146. Purcell, S. *et al.* PLINK: a tool set for whole-genome association and population-
23 based linkage analyses. *The American Journal of Human Genetics* **81**, 559-575
24 (2007).
- 25 147. Consortium, I.H. Integrating common and rare genetic variation in diverse
26 human populations. *Nature* **467**, 52-58 (2010).
- 27 148. Friedman, J., Hastie, T. & Tibshirani, R. Regularization paths for generalized linear
28 models via coordinate descent. *Journal of statistical software* **33**, 1 (2010).

30 **METHODS**

31 **Heart and brain imaging data.** We extracted imaging traits from the raw brain and cardiac
32 MRI images under the UKB Data-Field 100003. Specifically, following the pipelines

1 developed in Bai, et al.⁴³, we generated 82 CMR traits from the short-axis, long-axis, and
2 aortic cine images. Detailed pipeline implementation and quality controls steps can be
3 found in **Supplementary Note**. The 82 CMR traits can be divided into 6 categories,
4 including 64 left ventricle traits, 4 left atrium traits, 4 right ventricle traits, 4 right atrium
5 traits, 3 ascending aorta traits, and 3 descending aorta traits. Among 64 left ventricle
6 traits, we had well-established volumetric traits such as LVEDV, LVESV, LVSV, LVEF, LVCO,
7 and LVM. In addition, there were global and regional measures for myocardial-wall
8 thickness at end-diastole, peak circumferential strain, radial strain, as well as longitudinal
9 strain. For right ventricle, we had RVEDV, RVESV, RVSV, and RVEF. Four traits were
10 generated for left and right atrium, respectively, including maximum volume (LAV max
11 and RAV max), minimum volume (LAV min and RAV min), stroke volume (LVSV and RASV),
12 and ejection fraction (LAEF and RAEF). For ascending aorta and descending aorta, we had
13 measures for maximum area (AAo max area and DAo max area), minimum area (AAo min
14 area and DAo min area), and distensibility (AAo distensibility and DAo distensibility).

15

16 The procedures for deriving brain MRI traits were described in detail in previous papers
17 from our group, including regional brain volumes from T1-weighted MRI image³⁸, DTI
18 parameters from diffusion MRI image⁴⁰, functional activity and connectivity traits from
19 resting-state and task-based fMRI image⁴². Briefly, we used the advanced normalization
20 tools¹³⁹ (ANTs) to generate 98 regional brain volumes for cortical and subcortical regions,
21 as well as 3 global brain volume measures, including total gray matter volume, total white
22 matter volume, and total brain volume. In addition, using a similar procedure to that of
23 brain volumetric traits, we used ANTs to extract 63 global and regional cortical thickness
24 traits in this study (**Supplementary Note**). Using the ENIGMA-DTI pipeline^{140,141}, we
25 generated 110 tract-averaged parameters for fractional anisotropy, mean diffusivity, axial
26 diffusivity, radial diffusivity, and mode of anisotropy in 21 major white matter tracts and
27 across the whole brain (5×22). For fMRI, we used a parcellation-based approach based
28 on the Glasser360 atlas¹⁴², which divided the cerebral cortex into 360 regions in 12
29 functional networks¹⁴³. We mainly considered the mean amplitude (that is, functional
30 activity) of each network, the mean functional connectivity for each pair of networks, and
31 the mean amplitude and mean functional connectivity of the whole cortex (92 traits for
32 resting and task fMRI, respectively). To further provide details on functional organizations

1 of cerebral cortex, we also considered 64,620 area-level high-resolution resting functional
2 connectivity in phenotypic analysis with CMR traits.

3

4 The UKB study recruited approximately half a million participants aged between 40 and
5 69 years between 2006 and 2010. The UKB study had obtained ethics approval from the
6 North West Multicentre Research Ethics Committee (approval number: 11/NW/0382). In
7 2014, UKB started a project to re-invite 100,000 participants to undergo a multi-modal
8 imaging study, including both brain and cardiac MRI¹⁴⁴. We used the white British
9 individuals in UKB phases 1 to 3 data (released up through 2020, $n = 31,875$ for CMR traits)
10 as main discovery sample in our analysis. The UKB white but non-British subjects in phases
11 1 to 3 data and the white individuals in newly released UKB phase 4 data ($n = 8,252$,
12 removed relatives of the discovery sample) were treated as European validation sample.
13 In addition, we considered two non-European UKB validation datasets, including UKB
14 Asian (UKBA, $n = 500$) and UKB Black (UKBBL, $n = 271$). We also used the UKB first revisit
15 data ($n = 2,903$) to evaluate the reproducibility of CMR traits. The age range of imaging
16 subjects was 45 to 82 (mean age = 64.16, standard error = 7.67) and the proportion of
17 female was 51.6%.

18

19 **Phenotypic and mediation analysis.**

20 We performed pairwise linear regression for each pair of CMR and brain MRI traits. For
21 all pairs, we adjusted for the effects of age (at imaging), age-squared, sex, age-sex
22 interaction, age-squared-sex interaction, imaging site, height, weight, body mass index,
23 the top 40 genetic PCs, and total brain volume (for traits other than total brain volume
24 itself). For each continuous variable, the values greater than five times the median
25 absolute deviation from the median were removed. The number of subjects that had both
26 CMR and brain MRI data (after all quality controls) was 31,875 for regional brain volumes
27 and cortical thickness, 30,212 for DTI parameters, 30,792 for resting fMRI traits, and
28 26,849 for task fMRI traits. For regional cortical thickness, we additionally adjusted for
29 global mean thickness (for traits other than global mean thickness itself). For resting and
30 task fMRI traits, we additionally adjusted for head motion, head position, and volumetric
31 scaling variables. We reported the P values from two-sided t test and adjusted for multiple
32 testing using Bonferroni correction (considering all pairs of CMR and brain MRI traits).

1

2 Mediation analysis was performed for 41 traits, including diastolic blood pressure, systolic
3 blood pressure, high blood pressure, diabetes mellitus, smoking, drinking, basal metabolic
4 rate, and 34 biomarkers. We used the 82 CMR traits as cardiac mediators and performed
5 the analysis separately for all brain MRI traits, including 101 regional brain volumes, 63
6 cortical thickness, 110 DTI parameters, 92 resting fMRI traits, and 92 task fMRI traits. For
7 each brain MRI trait y (such as total brain volume), we fitted two models: $y = x\beta_1 +$
8 $z\eta_1 + w\alpha + \epsilon_1$ (Model 1) and $y = x\beta_2 + z\eta_2 + \epsilon_2$ (Model 2), where x is the trait of
9 interest (such as diastolic blood pressure), z is the set of covariates to be adjusted, w
10 is the set of 82 CMR traits (cardiac mediators), β_1 is the conditional effect of x on y ,
11 β_2 is the marginal effect of x on y , η_1 and η_2 are effects of covariates, α is the
12 effect of w on y , and ϵ_1 and ϵ_2 are random errors. We adjusted the same set of
13 covariates as we used in the above phenotypic analysis. A mediation relationship was built
14 if all the three conditions were satisfied: 1) β_2 was significant after Bonferroni
15 correction, suggesting the significant effects of x on y ; 2) α was significant after
16 Bonferroni correction, suggesting significant relationship between w and y ; 3) $|\beta_1| <$
17 $|\beta_2|$ and the two coefficients had the directions, suggesting the reduced effects of x
18 after adjusting for heart mediators. The proportion of mediated effect was defined by
19 $(|\beta_1| - |\beta_2|) / |\beta_1|$. A mediation relationship suggests a mechanism that the trait x may
20 have implicit influence on the brain MRI trait through the intermediate CMR traits.

21

22 **Genetic analysis on 82 CMR traits.**

23 We used the UKB imputed genotyping data and performed the following quality controls
24 on the subset of subjects with both CMR traits and genetics data⁴²: 1) excluded subjects
25 with more than 10% missing genotypes; 2) excluded variants with minor allele frequency
26 less than 0.01; 3) excluded variants with missing genotype rate larger than 10%; 4)
27 excluded variants that failed the Hardy-Weinberg test at 1×10^{-7} level; and 5) removed
28 variants with imputation INFO score less than 0.8. We estimated the SNP heritability using
29 GCTA⁵⁹ with autosomal SNPs in the white British discovery dataset. The effects of age (at
30 imaging), age-squared, sex, age-sex interaction, age-squared-sex interaction, imaging
31 site, height, weight, body mass index, and the top 40 genetic PCs were adjusted. We
32 performed GWAS using linear mixed effect models implemented in fastGWA¹⁴⁵, with the

1 same set of covariates as in heritability analysis being adjusted. We used Plink¹⁴⁶ (v2.0)
2 for validation GWAS, in which we adjusted for top ten genetic PCs instead of top 40. The
3 significant ($P < 6.09 \times 10^{-10}$, that is, $5 \times 10^{-8}/82$) genomic loci were defined using FUMA¹²⁸
4 (version v1.3.6a). Briefly, to define the LD boundaries, FUMA first identified independent
5 significant variants, which were defined as variants whose P values were smaller than 6.09
6 $\times 10^{-10}$ and were independent of other significant variants ($LD\ r^2 < 0.6$). Next, FUMA
7 constructed LD blocks by tagging all variants ($MAF \geq 0.0005$, including variants from the
8 1000 Genomes reference panel) in LD ($r^2 \geq 0.6$) with at least one independent significant
9 variant. Within these independent significant variants, FUMA defined independent lead
10 variants as those that were independent from each other ($LD\ r^2 < 0.1$). For independent
11 significant variants that were close with each other (<250 kb based on their LD
12 boundaries), FUMA merged their LD blocks into one single genomic locus. Independent
13 significant variants and all variants in LD ($r^2 \geq 0.6$) were searched on the NHGRI-EBI GWAS
14 catalog (version 2019-09-24) to look for previously reported GWAS findings ($P < 9 \times 10^{-6}$)
15 with any traits.

16
17 Using GWAS summary statistics, we performed genetic correlation analysis via LDSC¹²⁶
18 (version 1.0.1). The LD scores were from the 1000 Genomes European data and were
19 provided by LDSC. This analysis was focused on HapMap3¹⁴⁷ variants and the variants in
20 the major histocompatibility complex region were removed. Gene level association was
21 tested for 18,796 protein-coding genes using MAGMA¹²⁷ (version 1.08). Default MAGMA
22 settings were used with zero window size around each gene. FUMA performed functional
23 annotation and mapping analysis, in which genetic variants were annotated and linked to
24 35,808 candidate genes by a combination of positional, eQTL, and 3D chromatin
25 interaction mappings. We selected heart-tissues/cells related options and default values
26 were used for all other options in FUMA. MAGMA gene-set analysis was used to explore
27 the implicated biological pathway using 10,678 pre-constructed gene sets. Heritability
28 enrichment analysis was performed using partitioned LDSC⁶². We tested for tissue type
29 and cell type specific regulatory elements across multiple tissues and cell types in the
30 Roadmap Epigenomics Project¹³⁴. The baseline models were adjusted when estimating
31 and testing the enrichment scores in partitioned LDSC.

32

1 **Prediction models with genetics and multi-organ image data.**

2 We examined the prediction performance of CMR traits on 95 complex traits and
3 diseases, most of which were ICD10 diseases (62 diseases from Chapter 3, 4, 5, 6, and 9
4 in Data-Field 41270), mental health and cognitive traits, family history, self-reported
5 cardiovascular diseases, and cardiovascular risk factors. We focused on the 36,949
6 unrelated white British subjects and randomly divided the data into three independent
7 parts: training ($n = 22,169$), validation ($n = 7,390$), and testing ($n = 7,390$). The effect sizes
8 of CMR traits were estimated by ridge regression via glmnet¹⁴⁸ (R version 3.6.0, $n =$
9 $22,169$). We removed the effects of age (at imaging), age-squared, sex, age-sex
10 interaction, age-squared-sex interaction, imaging site, height, weight, body mass index,
11 and the top 40 genetic PCs. Model tuning parameters were all estimated in the validation
12 data and the prediction performance was examined on the testing data by calculation the
13 correlation between the predicted values and the observed ones. Next, we examined the
14 performance of genetic PRS for selected heart diseases. We used all UKB white British
15 subjects except for the ones in our validation and testing data (and their relatives) as
16 training data. The genetic PRS was developed by lassosum⁶⁴, with using the validation
17 dataset to tune the parameters. Finally, similar to CMR traits, we also used multiple brain
18 MRI traits as predictors in the prediction model for diabetes. The performance was tested
19 and compared on the subjects in the testing dataset that had all these data types.

20

21 **Code availability**

22 We made use of publicly available software and tools. The codes used to generate CMR
23 traits will be shared on Zenodo.

24

25 **Data availability**

26 Our GWAS summary statistics of 82 CMR traits have been shared on Zenodo and at Heart-
27 KP <https://heartkp.org/>. The GWAS summary statistics of brain MRI traits can be freely
28 downloaded at BIG-KP <https://bigkp.org/>. The individual level UK Biobank data used in
29 this study can be obtained from <https://www.ukbiobank.ac.uk/>.

30

31 **Fig. 1 Illustration of potential heart-brain connections.**

1 We illustrated examples of the potential heart-brain connections. For example,
2 cardiovascular disease/dysfunction may result in cognitive impairment and Alzheimer's
3 Disease, while mental health disorders and negative psychological health factors may
4 contribute to higher risk of cardiovascular disease. Multi-system aging and disease
5 processes as well as cardiovascular risk factors may influence both brain and heart in a
6 negative way. There may also exist the shared genetic influences between heart and brain
7 health.

8

9 **Fig. 2 Phenotypic heart-brain associations.**

10 **(A)** The $-\log_{10}(\text{pvalue})$ of phenotypic correlations between 82 CMR traits and 5 groups of
11 brain MRI traits, including 101 regional brain volumes, 63 cortical thickness traits, 110 DTI
12 parameters, 92 resting fMRI traits, and 92 task fMRI traits. The dashed line indicates the
13 Bonferroni-significance level ($P < 1.33 \times 10^{-6}$). Each CMR trait category is labeled with a
14 different color. **(B)** The $-\log_{10}(\text{pvalue})$ of phenotype correlations between 82 CMR traits
15 and 8,531 resting fMRI functional connectivity traits across 12 functional networks. The
16 dashed line indicates the Bonferroni-significance level ($P < 7.15 \times 10^{-8}$). Functional
17 networks are labeled with different colors. **(C)** Significant correlations between resting
18 functional connectivity traits and left ventricular myocardial mass (LVM, left) and right
19 ventricular ejection fraction (RVEF, right). AAO, ascending aorta; DAAo, descending aorta;
20 LA, left atrium; LV, left ventricle; RA, right atrium; RV, right ventricle; Visual1, the primary
21 visual network; and Visual2, the secondary visual network.

22

23 **Fig. 3 Effects of cardiovascular risk factors on brain MRI mediated through CMR traits.**

24 **(A)** We illustrate marginal effects (after adjusting for covariates) of diastolic blood
25 pressure on brain MRI traits and the corresponding conditional effects after further
26 adjusting for CMR traits. The difference between marginal and condition effects indicates
27 the indirect effect mediated through CMR traits. As illustrated in **(B)**, the average
28 proportion of CMR-mediated diastolic blood pressure's effects was 40.3% for DTI
29 parameters, 37.5% for resting fMRI, 33.6% for task fMRI, 56.2% for cortical thickness, and
30 38.6% for regional brain volumes. **(C)** Marginal effects (after adjusting for covariates) of

1 type 2 diabetes (ICD 10 code E11.9) on brain MRI traits and the corresponding conditional
2 effects after further adjusting for CMR traits. **(D)** Marginal effects (after adjusting for
3 covariates) of glycated hemoglobin A (HbA1c) on brain MRI traits and the corresponding
4 conditional effects after further adjusting for CMR traits.

5

6 **Fig. 4 Genetics of CMR traits in the UK Biobank.**

7 **(A)** SNP heritability of 82 CMR traits across the 6 categories. The x axis displays the ID of
8 CMR traits, see Table S1 for full names of these traits. AAo, ascending aorta; DAo,
9 descending aorta; LA, left atrium; LV, left ventricle; RA, right atrium; and RV, right
10 ventricle. The average heritability of each category is labeled. **(B)** Ideogram of 80 genomic
11 regions associated with CMR traits ($P < 6.09 \times 10^{-10}$). **(C)** Left ventricular end-systolic
12 volume (LVESV) was associated with the 22q11.23 region in both UK Biobank and Biobank
13 Japan studies (shared index variant rs5760061). **(D)** Left ventricular end-systolic volume
14 (LVESV) was associated with the 8q24.13 region in both UK Biobank and Biobank Japan
15 studies (shared index variant rs34866937). **(E)** Left ventricular ejection fraction (LVEF) was
16 associated with the 8q24.13 region in the Biobank Japan study (index variant
17 rs11025521), but not in the UK Biobank study.

18

19 **Fig. 5 Selected genetic loci that were associated with both CMR trait and other complex** 20 **traits and diseases.**

21 **(A)** In 6p21.2, we observed colocalization between the global myocardial-wall thickness
22 at end-diastole (WT global, index variant rs4151702) and atrial fibrillation (index variant
23 rs3176326). The posterior probability of Bayesian colocalization analysis for the shared
24 causal variant hypothesis (PPH4) is 0.904. In this region, the WT global was also in LD (r^2
25 ≥ 0.6) with ischemic stroke. **(B)** In 7p21.1, we observed colocalization between the
26 ascending aorta minimum area (DAo min area) and systolic blood pressure (shared index
27 variant rs2107595, PPH4 = 0.960). In this region, the DAo min area was also in LD ($r^2 \geq 0.6$)
28 with stroke, intracranial aneurysm, coronary artery disease, and moyamoya disease. **(C)**
29 In 15q25.2, we observed colocalization between the regional myocardial-wall thickness
30 at end-diastole (WT AHA 7, index variant rs11635505) and schizophrenia (index variant

1 rs12902973, PPH4 = 0.890). In this region, the WT AHA 7 was also in LD ($r^2 \geq 0.6$) with
2 bipolar disorder. **(D)** In 16q24.3, we observed colocalization between the ascending aorta
3 minimum area (AAo min area, index variant rs488327) and neuroticism (index variant
4 rs1673931, PPH4 = 0.991). **(E)** We illustrated the colocalization between the ascending
5 aorta maximum area (AAo max area) and cerebrospinal fluid (CSF) volume (shared index
6 variant rs7936928) in 11q24.3 (PPH4 = 0.902). **(F)** We illustrated the colocalization
7 between the AAo max area and functional connectivity between the default mode and
8 orbito-affective networks (Default <-> Orbito-Affective, shared index variant rs1678983)
9 in 15q21.1 (PPH4 = 0.964).

10

11 **Fig. 6 Genetic correlations and integrative prediction.**

12 **(A)** We illustrated selected genetic correlations between CMR traits (x axis) and complex
13 traits and diseases (y axis). The asterisks highlight significant genetic correlations after at
14 the FDR 5% level. **(B)** Predicting heart diseases using genetic variants and CMR traits.
15 Genetic PRS, polygenic risk scores of genetic variants. **(C)** The accuracy of diabetes
16 prediction analysis using different types of data. Brain volume, region brain volumes; and
17 DTI parameters, diffusion tensor imaging parameters.

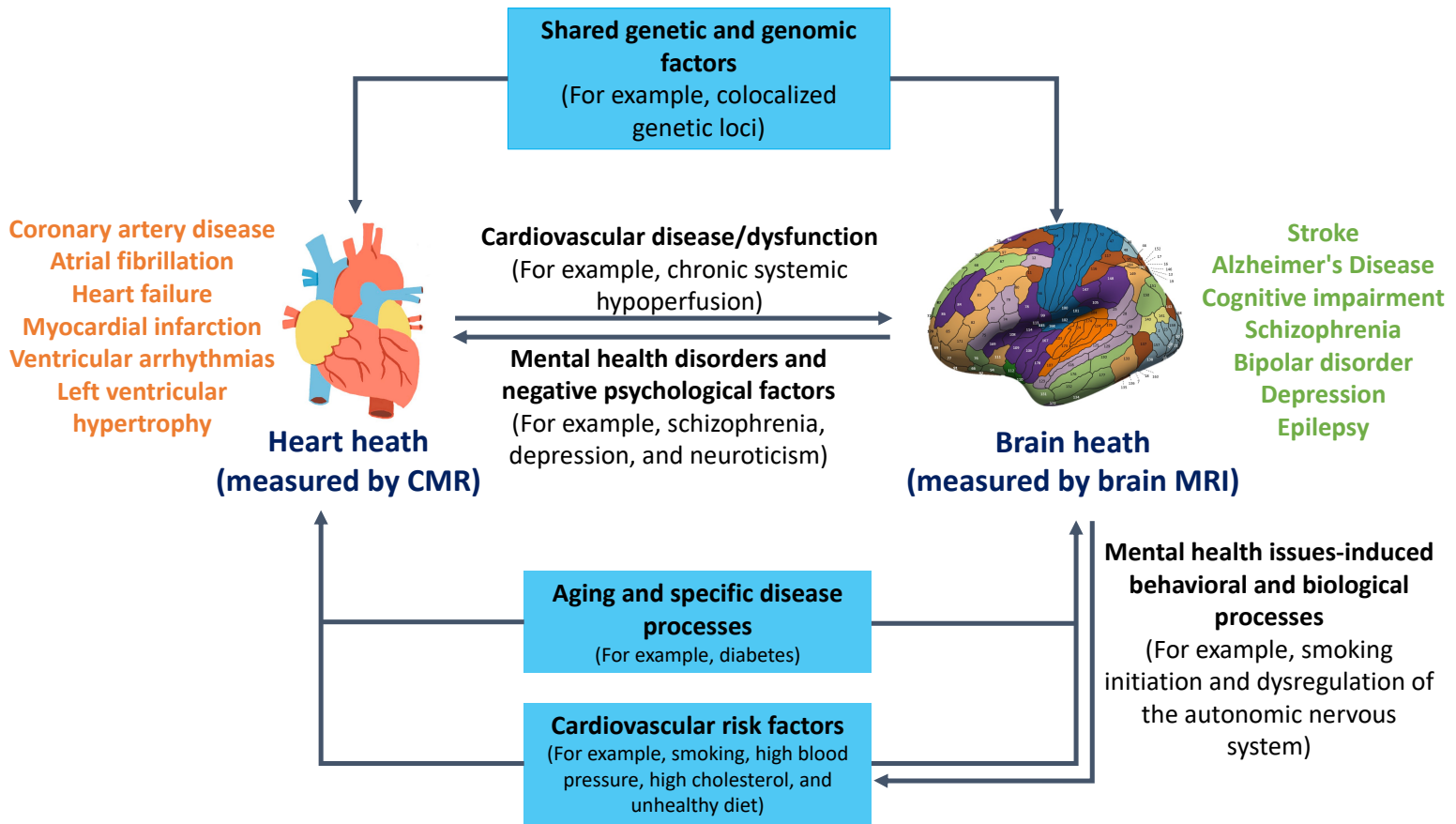


Figure 1

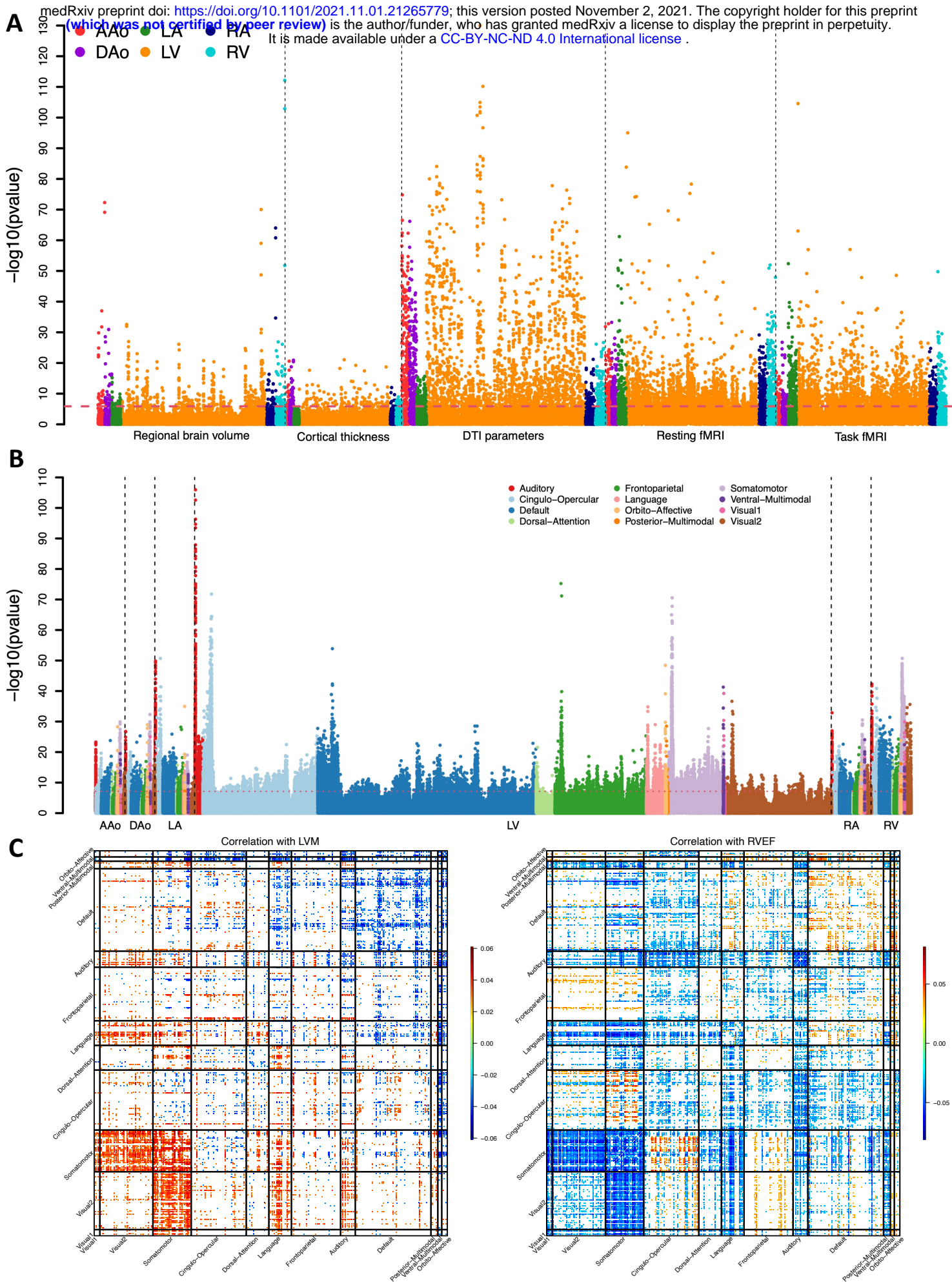


Figure 2

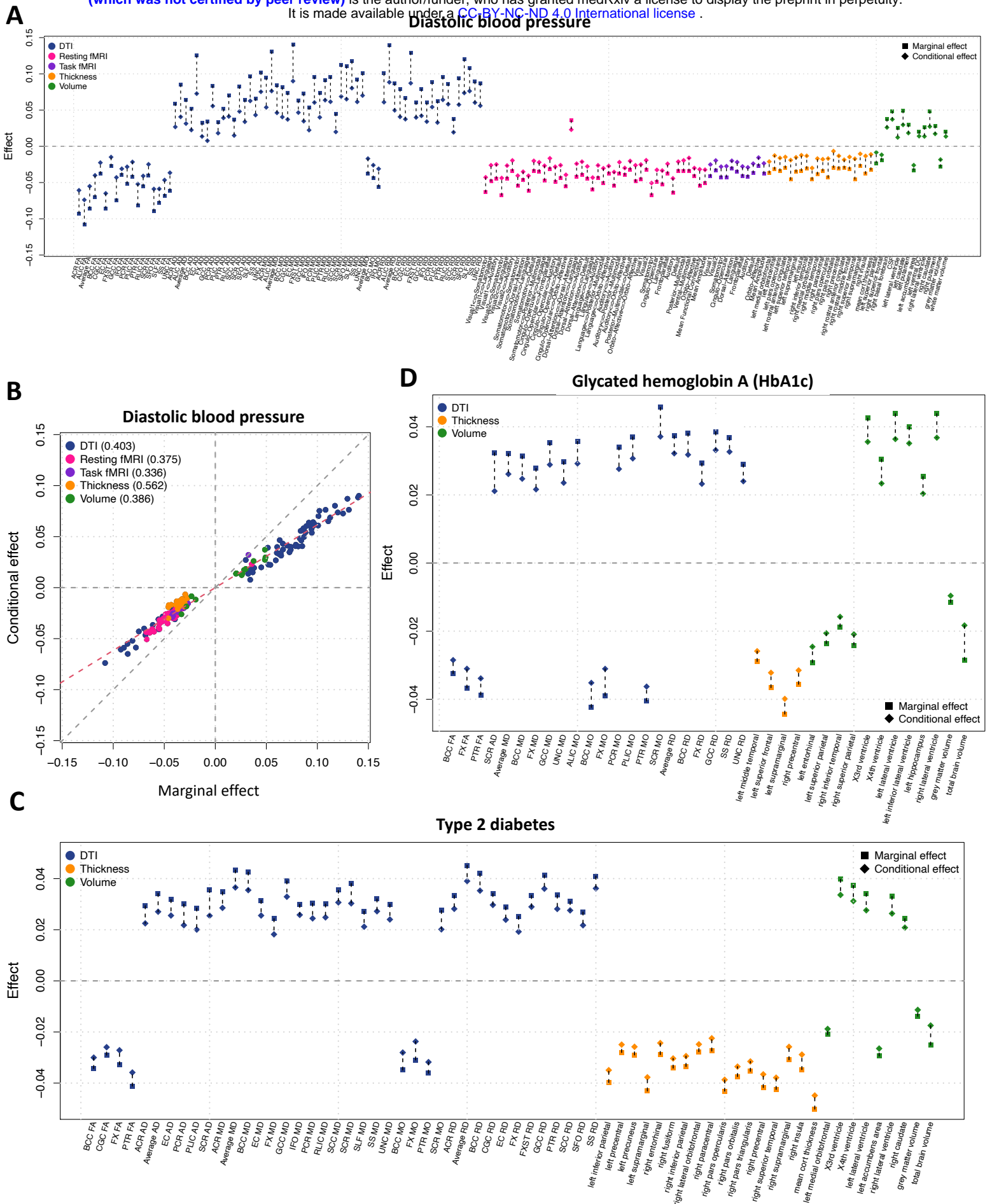


Figure 3

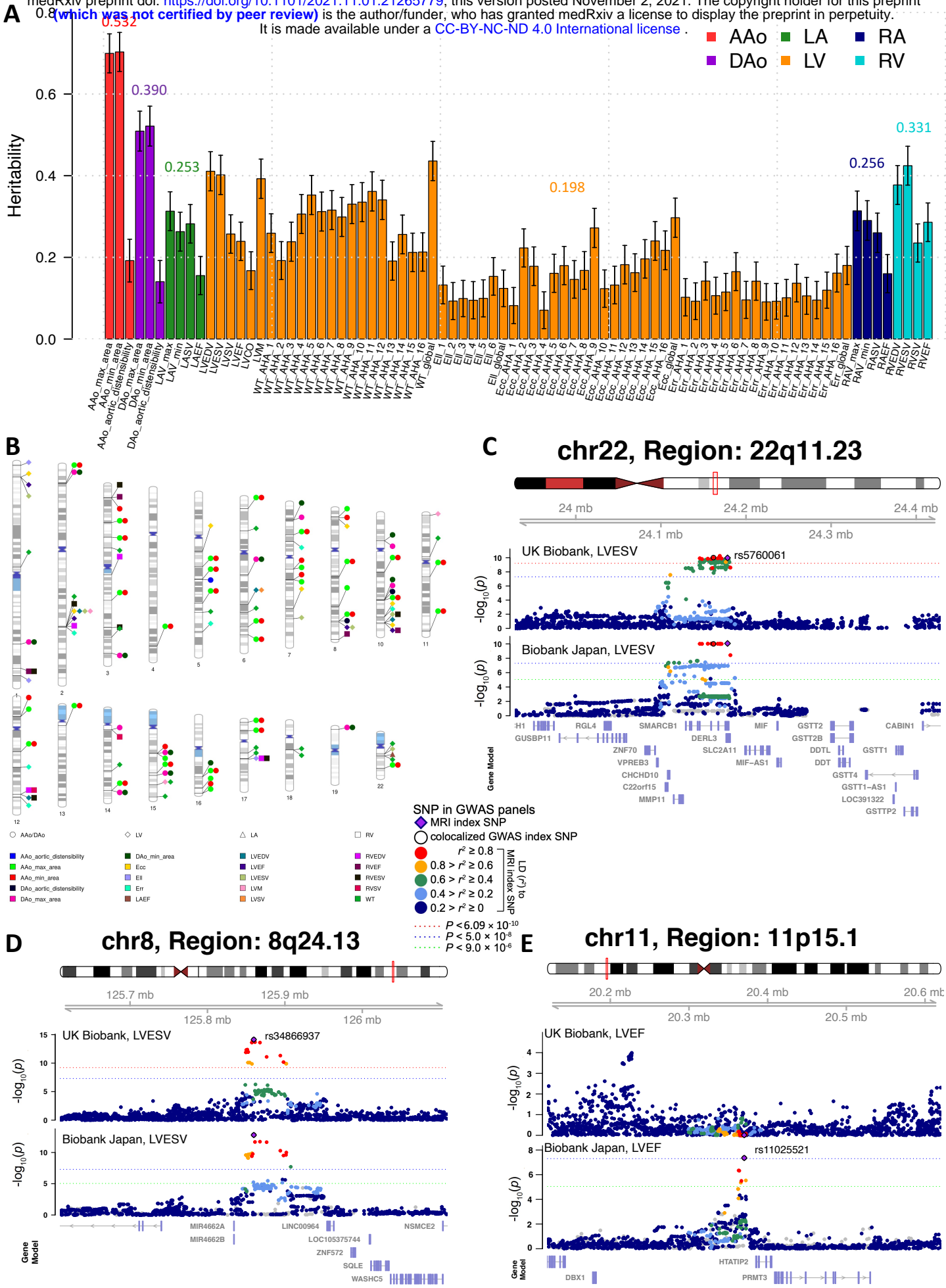
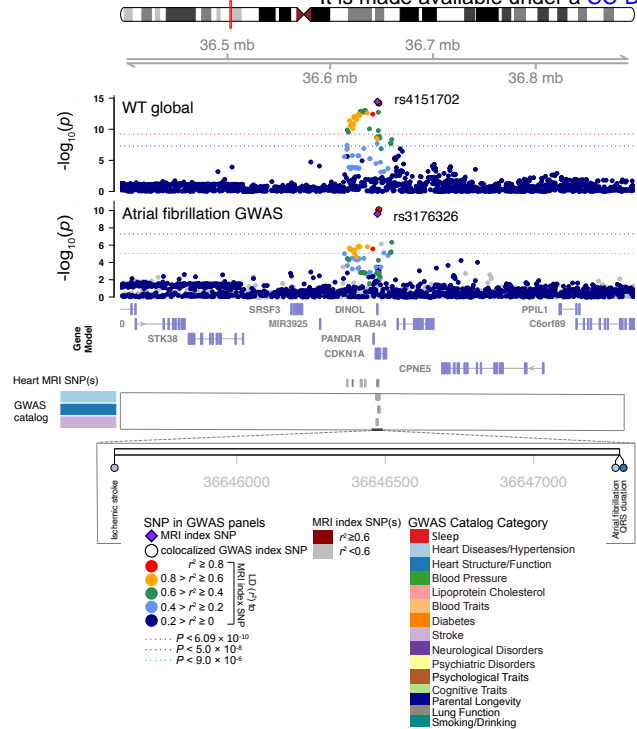
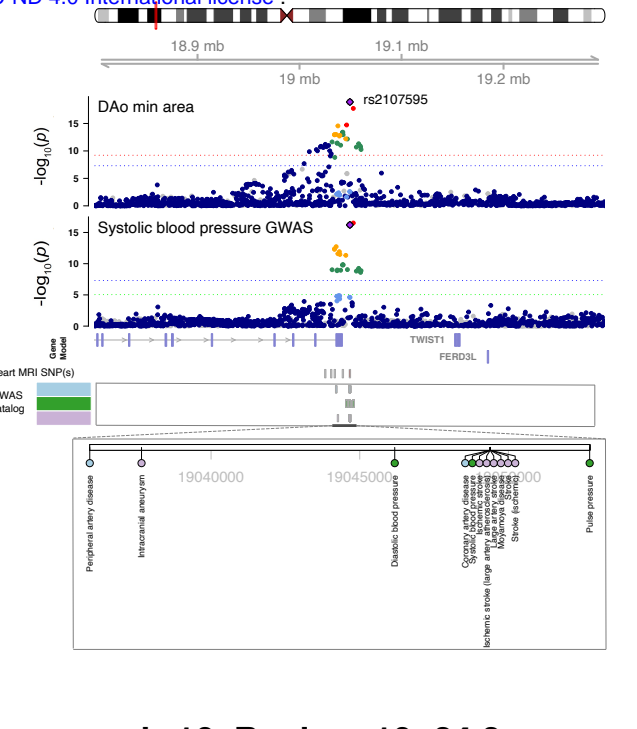


Figure 4

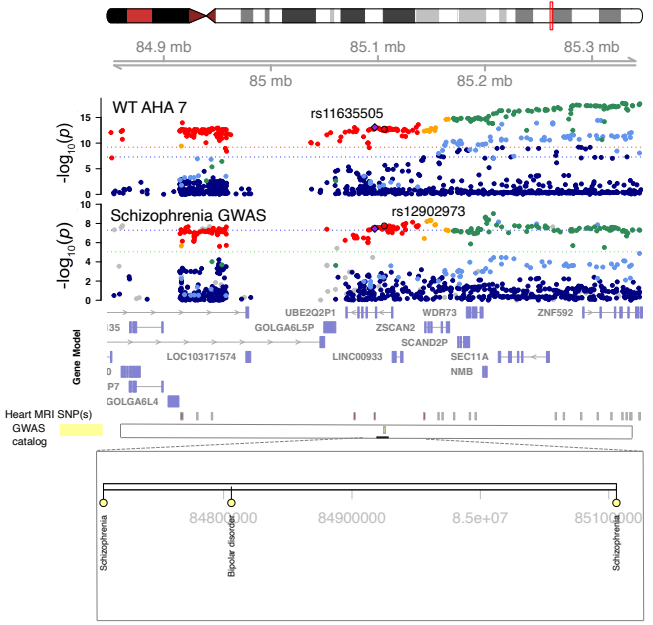
A **chr6, Region: 6p21.3**



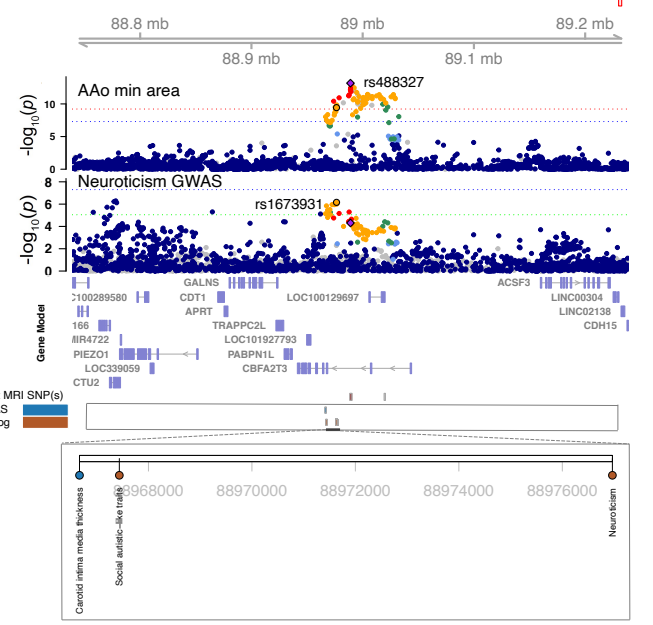
B **chr7, Region: 7p21.1**



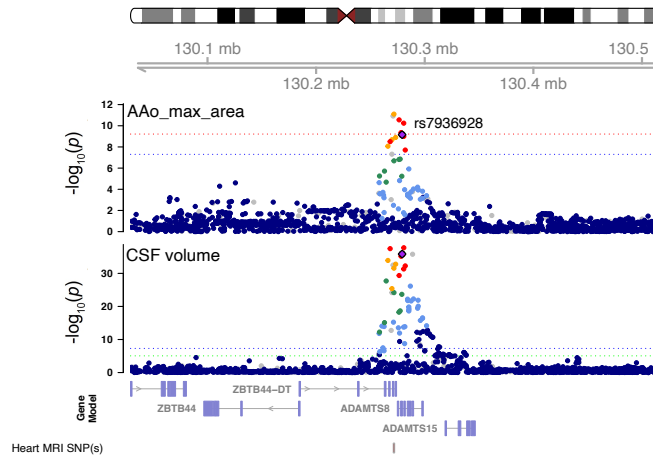
C **chr15, Region: 15q25.2**



D **chr16, Region: 16q24.3**



E **chr11, Region: 11q24.3**



F **chr15, Region: 15q21.1**

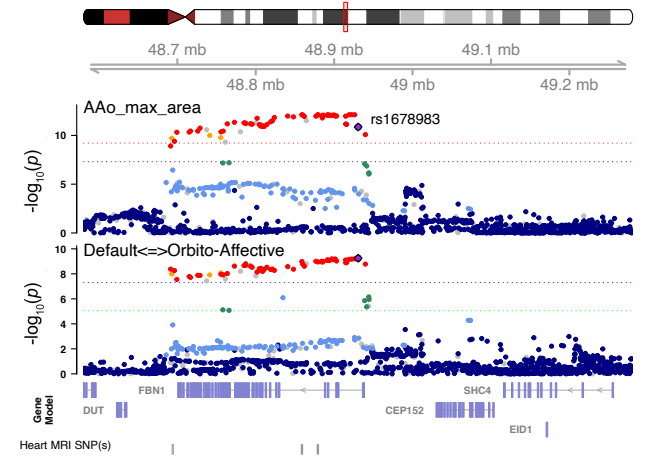


Figure 5

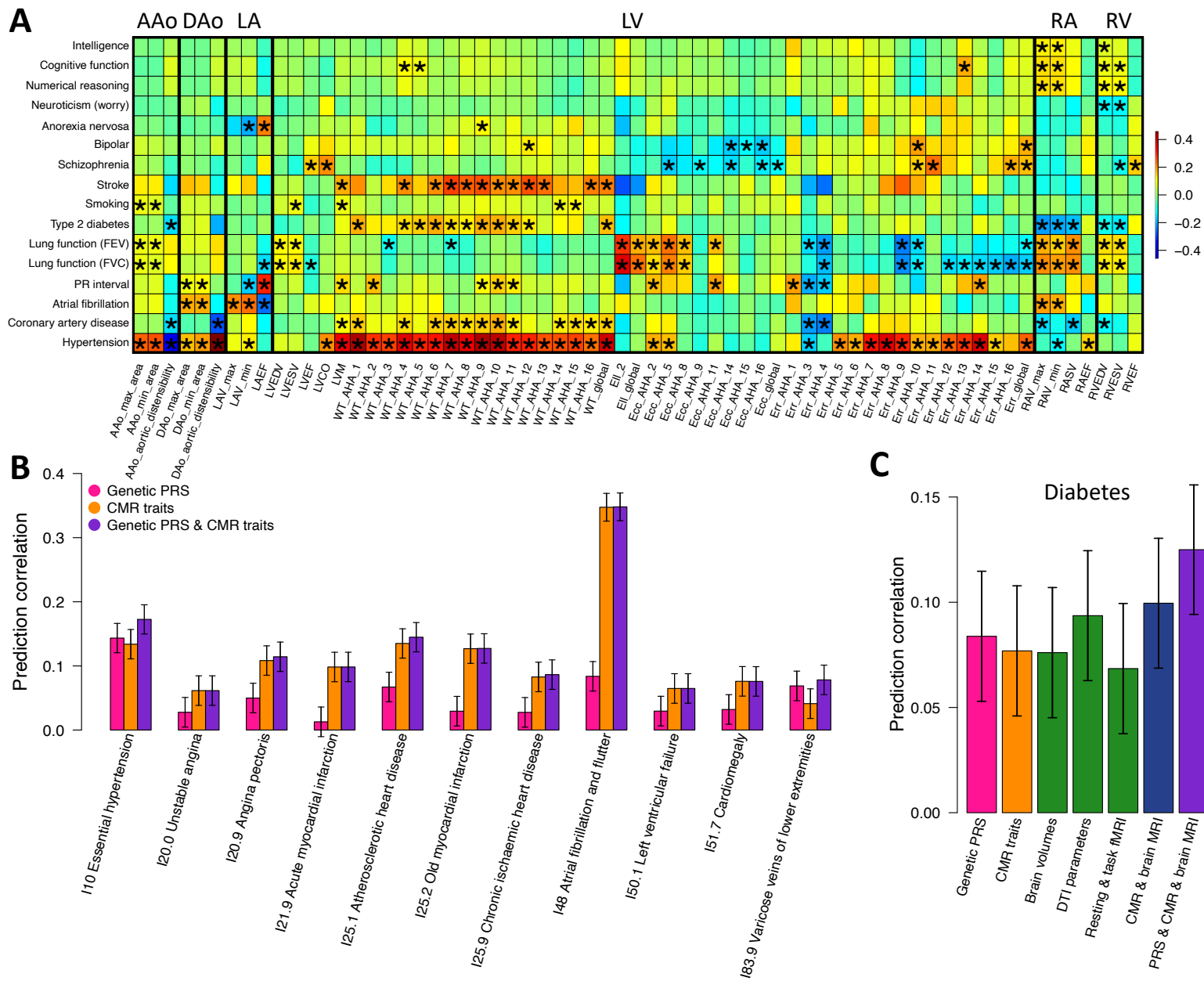


Figure 6