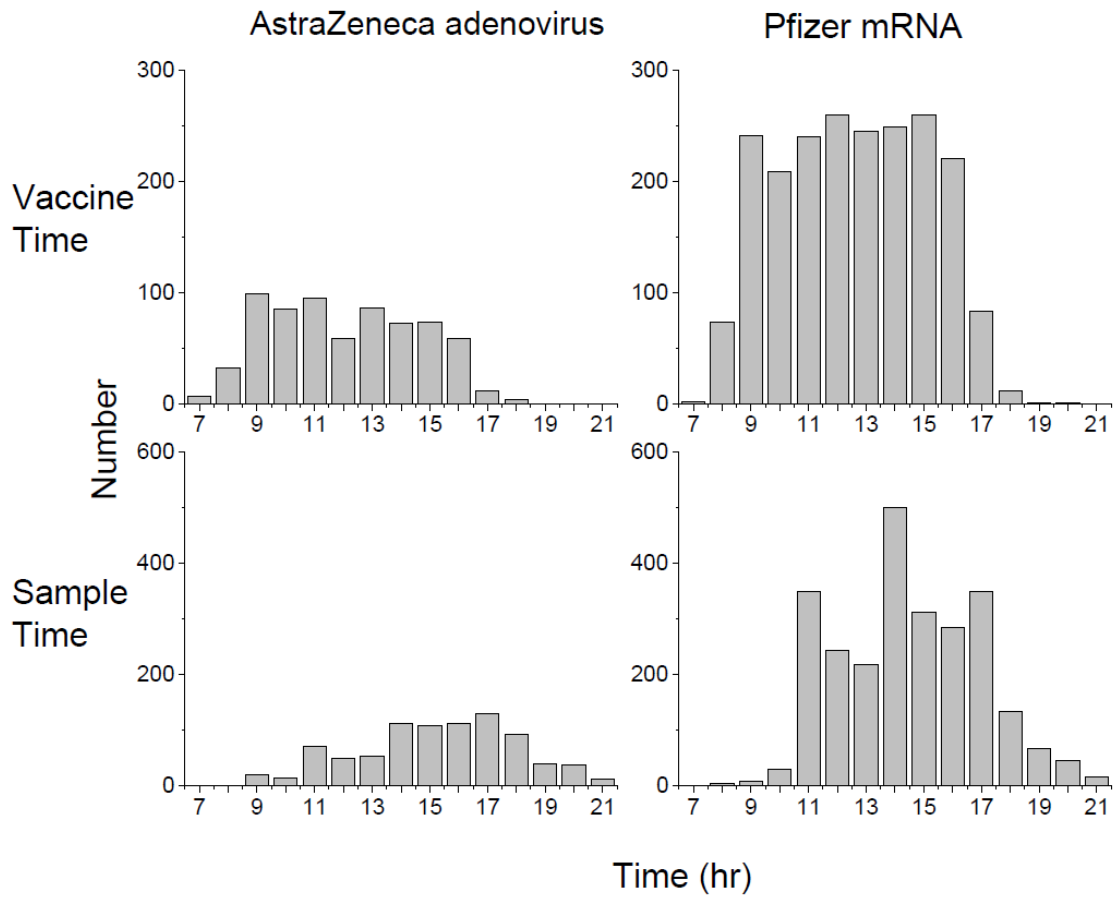
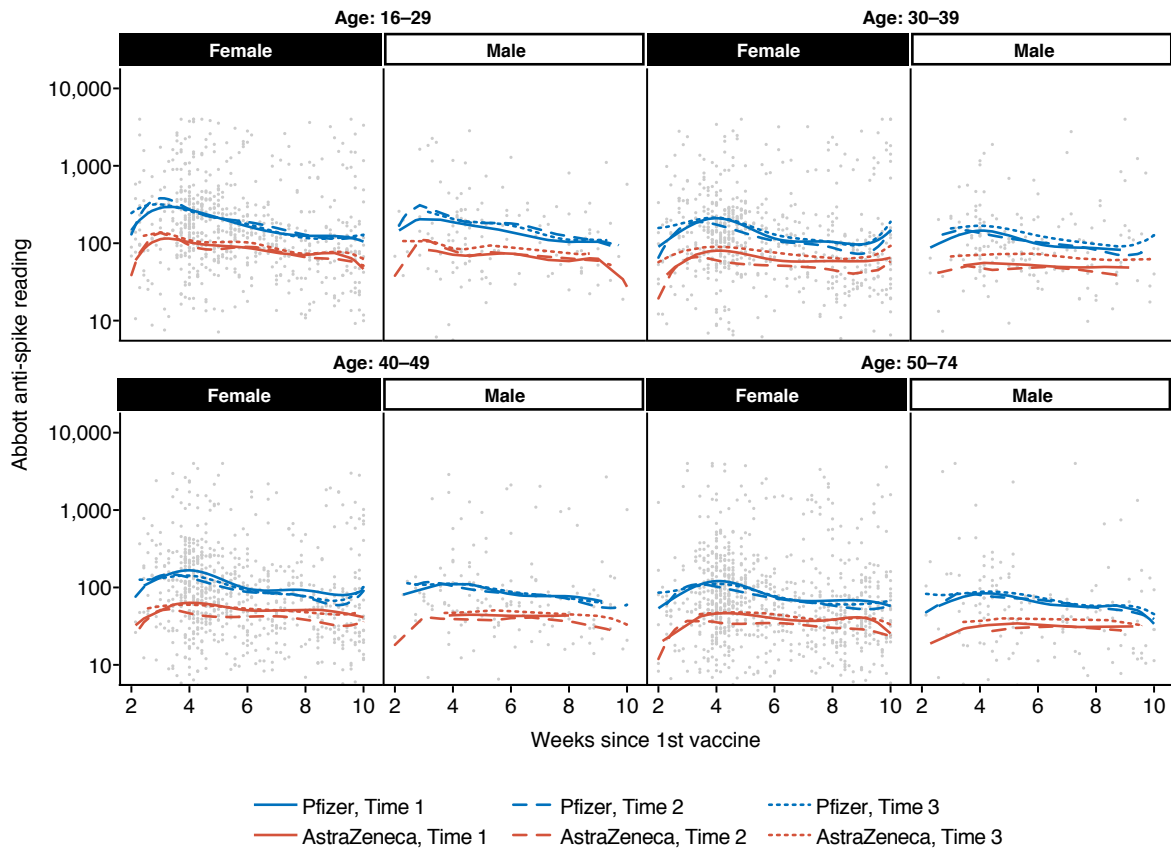


Supplemental Figure 1:



Histograms showing time (hour) of day of vaccinations (N=2784) and of sample collection (N=3425)

Supplemental Figure 2



B-spline fit curves, including time-of-day of vaccination (Time 1, 07:00-10:59; Time 2, 11:00-14:59; Time 3, 15:00-21:59), vaccine type, age group, sex, and days post vaccination to log₁₀ (Anti-Spike antibody response) Data estimates are split by time-of-day of vaccination vaccine type (Pfizer mRNA, blue; AstraZeneca Adenovirus, red), age group, and sex (Female or Male).

Supplemental Table 1: Type III tests of fixed effects from mixed effects model with sample time

Effect	Num DF	F	Probability
<i>Main Effects</i>			
Vaccination_Time (Time 1, Time 2, Time 3) ‡	2	4.40	0.0123
Sample_Time (Time 1, Time 2, Time 3) ‡	2	2.34	0.0969
Vaccine type (AstraZeneca vs. Pfizer)	1	150.68	<0.0001
Age (30-39, 40-49, 50-74 vs.16-29)	3	51.76	<0.0001
Sex (Female vs. Male)	1	6.02	0.0142
Days post-vaccination	6	19.24	<0.0001
<i>Interaction terms</i>			
Days*Vaccination_Time	6	1.28	0.2230
Days*Vaccine type	6	7.26	<0.0001
Days*Age	18	1.73	0.0283
Days*sex	6	1.09	0.3684
Vaccination_Time*Vaccine type	1	1.23	0.2926
Vaccination_Time*Age	3	0.71	0.6387
Vaccination_Time*Sex	1	0.42	0.6604

Details of the linear mixed modeling are: Time of vaccination (Time 1, 07:00-10:59; Time 2, 11:00-14:59; Time 3, 15:00-20:59), vaccine type (Pfizer or AstraZeneca), age groups (from Table 1A), sex, and days post-vaccination were treated as fixed factors. A B-spline transformation of days post-vaccination was used to model the non-linear pattern of anti-Spike antibody responses (log10 transformed) post vaccination.

DF= Degrees of Freedom.† For all F tests the denominator DF was 3357. ‡ For each F test, the fixed effect referent is the last term shown, the F and P values are the Type III tests of overall fixed effects.