

1 **SARS-CoV-2 Spike S1-specific IgG kinetic profiles following mRNA- versus** 2 **vector-based vaccination in the general Dutch population**

3 Lotus L. van den Hoogen^{1*}; Marije K. Verheul^{1*}; Eric R.A. Vos²; Cheyenne C.E. van Hagen²; Michiel
4 van Boven²; Denise Wong²; Alienke J. Wijmenga-Monsuur¹; Gaby Smit¹; Marjan Kuijer¹; Debbie van
5 Rooijen¹; Marjan Bogaard-van Maurik¹; Ilse Zutt¹; Jeffrey van Vliet¹; Fiona R.M. van der Klis¹; Hester
6 E. de Melker²; Robert S. van Binnendijk¹; Gerco den Hartog^{1#}

7

8 Affiliations:

- 9 1. Centre for Immunology of Infectious Diseases and Vaccines, National Institute for Public
10 Health and the Environment (RIVM), Bilthoven, The Netherlands
11 2. Centre for Infectious Diseases, Epidemiology and Surveillance, National Institute for Public
12 Health and the Environment (RIVM), Bilthoven, The Netherlands

13

14

15 * These authors contributed equally.

16 # Corresponding author:

17 Gerco den Hartog

18 gerco.den.hartog@rivm.nl

19 Antonie van Leeuwenhoeklaan 9

20 3721 MA Bilthoven

21 The Netherlands

22

23 Word count: 1,365

24 Inserts: 2 Figures, 1 Table

25 References: 17

26 **Abstract**

27 mRNA- and vector-based vaccines are used at a large scale to prevent COVID-19. We compared
28 Spike S1-specific (S1) IgG antibodies after vaccination with mRNA-based (Comirnaty, Spikevax) or
29 vector-based (Janssen, Vaxzevria) vaccines, using samples from a Dutch nationwide cohort. mRNA
30 vaccines induced faster inclines and higher S1 antibodies compared to vector-based vaccines in
31 adults 18-64 years old (n=2,412). For all vaccines, one dose resulted in boosting of S1 antibodies in
32 adults with a history of SARS-CoV-2 infection. For Comirnaty, two to four months following the
33 second dose (n=196), S1 antibodies in adults aged 18-64 years old (436 BAU/mL, interquartile range:
34 328-891) were less variable and median concentrations higher compared to those in persons ≥80
35 years old (366, 177-743), but differences were not statistically significant ($p>0.100$). Nearly all
36 participants seroconverted following COVID-19 vaccination, including the aging population. These
37 data confirm results from controlled vaccine trials in a general population, including vulnerable
38 groups.

39 Introduction

40 High vaccine effectiveness (VE) data related to the prevention of hospitalization due to COVID-19
41 have been reported up to 20 weeks after vaccination.^{1,2} In the Netherlands, four vaccines have been
42 included in the national vaccination program and are either mRNA-based (Comirnaty and Spikevax)
43 or vector-based (Vaxzevria and Janssen). mRNA-based vaccines use lipid nanoparticles to deliver
44 Spike-encoding mRNA and vector-based vaccines use adenovirus to deliver Spike-encoding DNA to
45 induce expression of the Spike protein by human cells. Multiple reports independently describe the
46 induction of Spike-specific antibodies by the various vaccines. However, most results are from
47 specific groups such as immunocompromised patients or healthcare workers.³⁻⁵ Direct comparisons
48 of mRNA- and vector-based vaccines in the general population are scarce as well as those comparing
49 these four vaccines simultaneously.⁶

50 PIENTER-Corona (PiCo) is an ongoing cohort study in a Dutch nationwide sample at four-monthly
51 intervals.^{7,8} Using this cohort, we selected participants 18 years or older who had received one or
52 two doses of Comirnaty, Spikevax, Vaxzevria or Janssen and compared SARS-CoV-2 Spike S1-specific
53 (S1) antibody concentrations induced by each vaccine type.

54 Results

55 The two most recent PiCo study rounds in February and June 2021 followed the launch of the Dutch
56 national COVID-19 vaccination campaign. Data availability was driven by vaccine roll-out and
57 prioritization of the aging population during the campaign (Sup Fig 1). For those 18-64 years old,
58 data were available up to two months following each dose across all four vaccines (n=2,412), while
59 for Comirnaty, data across all ages were available in SARS-CoV-2-naïve persons up to four months
60 following the second dose (18-91 years old, n=196). S1 antibody concentrations were measured
61 using a previously described assay and expressed in binding antibody units per mL (BAU/mL), as
62 defined by the WHO International Standard (NIBSC 20/136).^{9,10} SARS-CoV-2 infection prior to
63 vaccination was defined by S1 seropositivity in any study round prior to vaccination or reporting a
64 PCR/antigen SARS-CoV-2 positive test prior to vaccination.

65 Among adults aged 18-64, prioritization resulted in the fact that participants were relatively
66 frequently healthcare worker or had comorbidities, and most persons were in the oldest age group
67 (45-64 years old) (Table 1). The median vaccination interval between the two doses was 77 days for
68 Vaxzevria (IQR: 69-77) and 35 days (28-35) and 33 days (28-35) for Comirnaty and Spikevax,
69 respectively.

70 In infection-naïve adults aged 18-64 years, mRNA-based vaccines induced S1 IgG faster and reached
71 higher levels than vector-based vaccines (Figure 1). Subsequent to the rise following the second
72 dose, an initial rapid decay could be seen which stabilized, while for vector-based vaccines the
73 slower rise stabilized without any clear decay. Between fourteen days and two months after
74 completion of the vaccination schedule or positive SARS-CoV-2 test, median IgG levels were 2,799
75 BAU/mL for Spikevax (IQR: 1,714-4,669; seropositivity: 99%, n/N: 72/73), 2,408 for Comirnaty (1,373
76 -3,799; 99%, 151/152), 313 for Vaxzevria (145-703; 100%, 185/186), 64 for Janssen (29-143; 95%,
77 189/199), and 91 (39-230; 87%, 90/104) for unvaccinated, SARS-CoV-2-confirmed participants. All
78 three non-responders for Spikevax, Comirnaty and Vaxzevria had a high risk comorbidity (see
79 footnote Table 1). For Janssen, twenty-eight days after vaccination S1 IgG increased to 77 (37-163;
80 98%, 85/87) with no comorbidity for the two non-responders. Regression results showed that age,
81 sex, and comorbidity significantly contributed to S1 IgG concentrations but this was not consistent
82 between vaccines and doses (Sup Table 1).

83 In adults aged 18-64, S1 IgG concentrations were higher in persons with a history of SARS-CoV-2
84 after one vaccine dose compared to previously naïve persons after a completed schedule
85 irrespective of vaccine type, Figure 2A. For persons with an infection history, no further increases
86 were seen after a second dose if applicable ($p>0.100$).

87 For Comirnaty, IgG levels were more heterogeneous in the oldest age group but did not show a
88 statistically significant difference between infection-naïve adults aged 18-64 years (436, 328-891)
89 and those aged 65-79 (542, 417-836) and ≥ 80 years old (366, 177-743), $p>0.100$, (Figure 2B, Sup
90 Table 2).

91 Discussion

92 In response to the global COVID-19 pandemic, novel vaccine strategies using mRNA- and vector-
93 based induction of the immune system have been developed. In adults aged 18 to 64, we observed
94 the steepest inclines and highest Spike S1 IgG concentrations up to two months following
95 vaccination with mRNA-based vaccines compared to vector-based COVID-19 vaccines. Boosting of
96 Spike S1 IgG responses in persons with a history of infection was seen for all four vaccines, and a
97 second dose did not further increase anti-S1 IgG levels. We used antibody concentration units
98 according to the WHO international standard, enabling direct comparison between studies.

99 Others have shown that IgG to Spike S1 following SARS-CoV-2 infection or mRNA vaccination shows
100 an initial decline with stabilization of IgG antibodies after 4-6 months.¹¹ The rapid induction of high
101 levels of antibodies by mRNA vaccines, compared to vector-based vaccines, followed by an early

102 decay may point to the induction of short-lived plasma blasts by the mRNA vaccines that disappear
103 soon after the immunization, and may not predict the number of sustaining memory cells.

104 During the delta variant period in the Netherlands, overall VE against hospitalization was 91% for
105 Comirnaty, 96% for Spikevax, 88% for Vaxzevria and 82% for Janssen.¹ Antibody data from our study
106 mirrored these trends which supports the notion that antibody binding and neutralization correlate
107 with vaccine efficacy.¹² However, the relative difference in VE estimates is smaller than in antibody
108 levels, indicating that antibody levels alone do not constitute immune protection, as expected.

109 Boosting of S1 IgG after one dose of mRNA or vector vaccine in previously infected persons has been
110 described previously.^{5,13} Here we confirm boosting of infection-induced immune memory regardless
111 of vaccine-type. This boosting seems stronger than observed after revaccination, indicating a more
112 matured underlying memory B cell response induced by viral infection compared to immunization.
113 This observation needs in-dept follow-up in the future when the opposite will occur: boosting of
114 vaccine-induced immunity by infection.

115 We showed highly variable antibody response between individuals which increased in community-
116 dwelling elderly aged 80 years and older after completion of Comirnaty. To date, most of the
117 humoral data in the elderly are from nursing home residents.¹⁴ Müller et al. showed lower antibody
118 profiles in nursing home residents compared to those 20-60 year old shortly following vaccination,
119 which contrast with our findings. Such discrepancies might be caused by the increased age range (up
120 to 91 in our study versus 100 in Müller et al.), presence of more complex comorbidities or the fact
121 that antibody production is delayed in the elderly.

122 The data presented here are a highly relevant confirmation of results from controlled vaccine trials
123 since we show high immunogenicity after vaccination in the general population, including vulnerable
124 groups and different vaccination regimens. Although most persons seroconverted regardless of the
125 vaccine received, mRNA- and vector-based COVID-19 vaccines induced distinct S1-specific IgG kinetic
126 profiles. Further exploration of the translation of antibody quantity to antibody quality and
127 subsequent protection against infection and (severe) disease as well as the involvement of other
128 immune compartments such as T cells is needed.

129 **Methods**

130 *Study population*

131 We used samples from a four-monthly prospective nationwide cohort study in the Netherlands
132 which has been described in detail elsewhere.^{7,8} Participants provided a fingerprick blood sample
133 and completed a questionnaire including sociodemographic factors, comorbidities, COVID-19

134 disease (symptoms, type and date of SARS-CoV-2 test) and COVID-19 vaccination (brand and dates).
135 Participants 18 years or older who had received one or two doses of Comirnaty, Spikevax, Vaxzevria
136 or Janssen were selected. Unvaccinated participants aged 18-64 years old who reported a positive
137 SARS-CoV-2 PCR or antigen test up to two months prior to sampling were selected to compare
138 vaccine responses to those following SARS-CoV-2 infection (n=114; Sup Table 3).

139 *Antibody detection*

140 Serum samples were analyzed for IgG concentrations to SARS-CoV-2 Spike S1 using a previously
141 described bead-based assay.⁹ IgG concentrations were expressed in binding antibody units (BAU/mL)
142 using the NIBSC 20/136 WHO standard.¹⁰

143 *Statistical analyses*

144 Statistical analyses were done in R Studio (version 4.1.0).¹⁵ Mann-Whitney tests were used to
145 compare IgG concentrations by age group with blocking per strata of sex and time since vaccination
146 (dichotomized as more or less than 3 months), and by infection history with blocking per strata of
147 sex (*coin*¹⁶). IgG kinetics were fitted with a Generalized Additive Model, using penalized splines
148 (*mgcv*¹⁷).

149 Funding

150 This work was funded by the Dutch Ministry of Health, Welfare and Sports.

151 Acknowledgements

152 We would like to thank all participants.

153 Conflict of interest

154 The authors declare no competing interests.

155 References

- 156 1. de Gier B, Kooijman M, Kemmeren J, de Keizer N. COVID-19 vaccine effectiveness against
157 hospitalizations and ICU admissions in the Netherlands, April- August 2021. *medRxiv*.
158 2021;doi:<https://doi.org/10.1101/2021.09.15.21263613>
- 159 2. Self WHT, M.W.; Rhoads, J.P.; Gaglani M. Comparative Effectiveness of Moderna, Pfizer-
160 BioNTech, and Janssen (Johnson & Johnson) Vaccines in Preventing COVID-19 Hospitalizations
161 Among Adults Without Immunocompromising Conditions — United States, March–August 2021.
162 *MMWR Morb Mortal Wkly Rep*. 2021;doi:<http://dx.doi.org/10.15585/mmwr.mm7038e1external>
- 163 3. Geers D, Shamier MC, Bogers S, et al. SARS-CoV-2 variants of concern partially escape
164 humoral but not T-cell responses in COVID-19 convalescent donors and vaccinees. *Sci Immunol*. May
165 25 2021;6(59)doi:10.1126/sciimmunol.abj1750
- 166 4. Ollila TA, Lu S, Masel R, et al. Antibody Response to COVID-19 Vaccination in Adults With
167 Hematologic Malignant Disease. *JAMA Oncol*. Aug 11 2021;doi:10.1001/jamaoncol.2021.4381
- 168 5. Eyre DW, Lumley SF, Wei J, et al. Quantitative SARS-CoV-2 anti-spike responses to Pfizer-
169 BioNTech and Oxford-AstraZeneca vaccines by previous infection status. *Clin Microbiol Infect*. Jun 7
170 2021;doi:10.1016/j.cmi.2021.05.041
- 171 6. Wei J, Stoesser N, Matthews PC, et al. Antibody responses to SARS-CoV-2 vaccines in 45,965
172 adults from the general population of the United Kingdom. *Nat Microbiol*. Sep 2021;6(9):1140-1149.
173 doi:10.1038/s41564-021-00947-3
- 174 7. Vos ERA, den Hartog G, Schepp RM, et al. Nationwide seroprevalence of SARS-CoV-2 and
175 identification of risk factors in the general population of the Netherlands during the first epidemic
176 wave. *J Epidemiol Community Health*. Nov 28 2020;doi:10.1136/jech-2020-215678
- 177 8. Vos ERA, van Boven M, den Hartog G, et al. Associations between measures of social
178 distancing and SARS-CoV-2 seropositivity: a nationwide population-based study in the Netherlands.
179 *Clin Infect Dis*. Mar 27 2021;doi:10.1093/cid/ciab264
- 180 9. den Hartog G, Schepp RM, Kuijer M, et al. SARS-CoV-2-Specific Antibody Detection for
181 Seroepidemiology: A Multiplex Analysis Approach Accounting for Accurate Seroprevalence. *J Infect*
182 *Dis*. Oct 1 2020;222(9):1452-1461. doi:10.1093/infdis/jiaa479
- 183 10. World Health Organization. First WHO International Standard for anti-SARS-CoV-2
184 immunoglobulin (human). Accessed 7 June 2021, 2021. [https://www.nibsc.org/documents/ifu/20-](https://www.nibsc.org/documents/ifu/20-136.pdf)
185 [136.pdf](https://www.nibsc.org/documents/ifu/20-136.pdf)
- 186 11. Israel A, Shenhar Y, Green I, et al. Large-scale study of antibody titer decay following
187 BNT162b2 mRNA vaccine or SARS-CoV-2 infection. *medRxiv*. Aug 21
188 2021;doi:10.1101/2021.08.19.21262111
- 189 12. Earle KA, Ambrosino DM, Fiore-Gartland A, et al. Evidence for antibody as a protective
190 correlate for COVID-19 vaccines. *Vaccine*. Jul 22 2021;39(32):4423-4428.
191 doi:10.1016/j.vaccine.2021.05.063

- 192 13. Saadat S, Rikhtegaran Tehrani Z, Logue J, et al. Binding and Neutralization Antibody Titers
193 After a Single Vaccine Dose in Health Care Workers Previously Infected With SARS-CoV-2. *JAMA*. Apr
194 13 2021;325(14):1467-1469. doi:10.1001/jama.2021.3341
- 195 14. Muller L, Andree M, Moskorz W, et al. Age-dependent immune response to the
196 Biontech/Pfizer BNT162b2 COVID-19 vaccination. *Clin Infect Dis*. Apr 27
197 2021;doi:10.1093/cid/ciab381
- 198 15. *R: A language and environment for statistical computing*. R Foundation for Statistical
199 Computing; 2020. <https://www.R-project.org/>
- 200 16. Hothorn THK, van de Wiel MA, Zeileis A. Implementing a class of permutation tests: The coin
201 package. *Journal of Statistical Software*. 2008;28(8):1-23. doi:10.18637/jss.v028.i08
- 202 17. SN W. *Generalized Additive Models: An Introduction with R*. Second ed. Chapman and
203 Hall/CRC; 2017.

204

205 **Table 1: General characteristics of SARS-CoV-2 vaccinated adults aged 18-64 years up to two months following the first or second dose by vaccination**
 206 **brand and number of doses (n=2,412).**

n (%), unless otherwise specified	Comirnaty		Spikevax		Vaxzevria		Janssen
Doses	1	2	1	2	1	2	1
N	974	466	222	124	111	298	217
Sex							
- Male	407 (42%)	154 (33%)	87 (39%)	31 (25%)	47 (42%)	98 (33%)	82 (38%)
- Female	567 (58%)	312 (67%)	135 (61%)	93 (75%)	64 (58%)	200 (67%)	135 (62%)
Age in years							
- 18-29	68 (7%)	47 (10%)	18 (8%)	11 (9%)	3 (3%)	15 (5%)	26 (12%)
- 30-44	332 (34%)	101 (22%)	78 (35%)	49 (40%)	5 (5%)	40 (13%)	49 (23%)
- 45-64	574 (59%)	318 (68%)	126 (57%)	64 (52%)	103 (93%)	243 (82%)	142 (65%)
Healthcare worker							
- No	841 (86%)	297 (64%)	184 (83%)	57 (46%)	97 (87%)	179 (60%)	157 (72%)
- Yes	133 (14%)	169 (36%)	38 (17%)	67 (54%)	14 (13%)	119 (40%)	60 (28%)
Comorbidities							
- Risk group*	236 (24%)	193 (41%)	50 (23%)	39 (31%)	48 (43%)	106 (36%)	32 (15%)
- None/other**	738 (76%)	273 (59%)	172 (77%)	85 (69%)	63 (57%)	192 (64%)	185 (85%)
Infection history							
- No	791 (81%)	408 (88%)	175 (79%)	108 (87%)	101 (91%)	265 (89%)	186 (86%)

- Yes	183 (19%)	58 (12%)	47 (21%)	16 (13%)	10 (9%)	33 (11%)	31 (14%)
Median vaccination interval in days (IQR)		35 (28 – 35)		33 (28 - 35)		77 (69 – 77)	

207 * High risk comorbidities: asthma or other lung disease, cardiovascular disease, diabetes, (history of) cancer, history of transplantation, kidney disease,
208 immune disease, splenectomy, liver disease, rheumatoid arthritis, intestinal disease, neurological disease, or other (open field). Persons with these
209 comorbidities were prioritized during the vaccination campaign in the Netherlands as they were considered high risk for severe COVID-19.

210 **Other comorbidities: hay fever, skin disease or allergies.

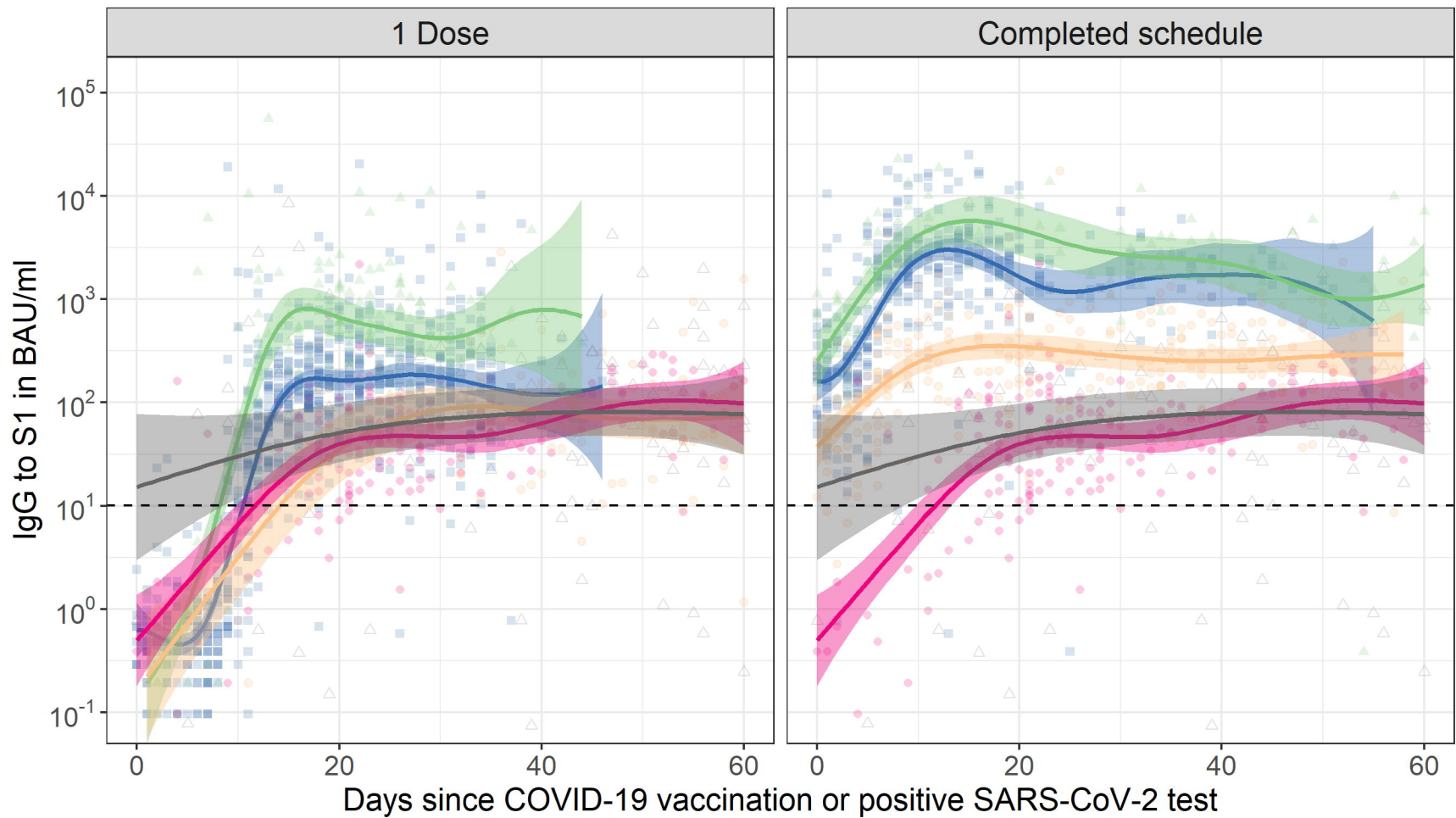
211 IQR: interquartile range.

212 **Figure legends**

213 **Figure 1: Spike S1 immunoglobulin G (IgG) kinetics following COVID-19 vaccination by number of**
214 **doses and vaccine brand in SARS-CoV-2-naive adults aged 18 to 64 years old.** The dashed horizontal
215 line represents the threshold for seropositivity. Data for Janssen is duplicated across the two panels
216 to enable direct comparison with the other vaccine brands after one dose and a completed
217 vaccination schedule. For comparison, IgG concentrations following a positive SARS-CoV-2 PCR or
218 antigen test in unvaccinated participants are shown alongside vaccination responses; data is
219 duplicated in both panels (for details see Supplementary Table 3). Fit and 95% confidence bands are
220 shown from a Generalized Additive Model, using penalized splines, with only time since dose in days
221 as explanatory variable. For results of multivariable models, see Supplementary Table 1. BAU/mL:
222 binding antibody units per mL; IgG: immunoglobulin G.

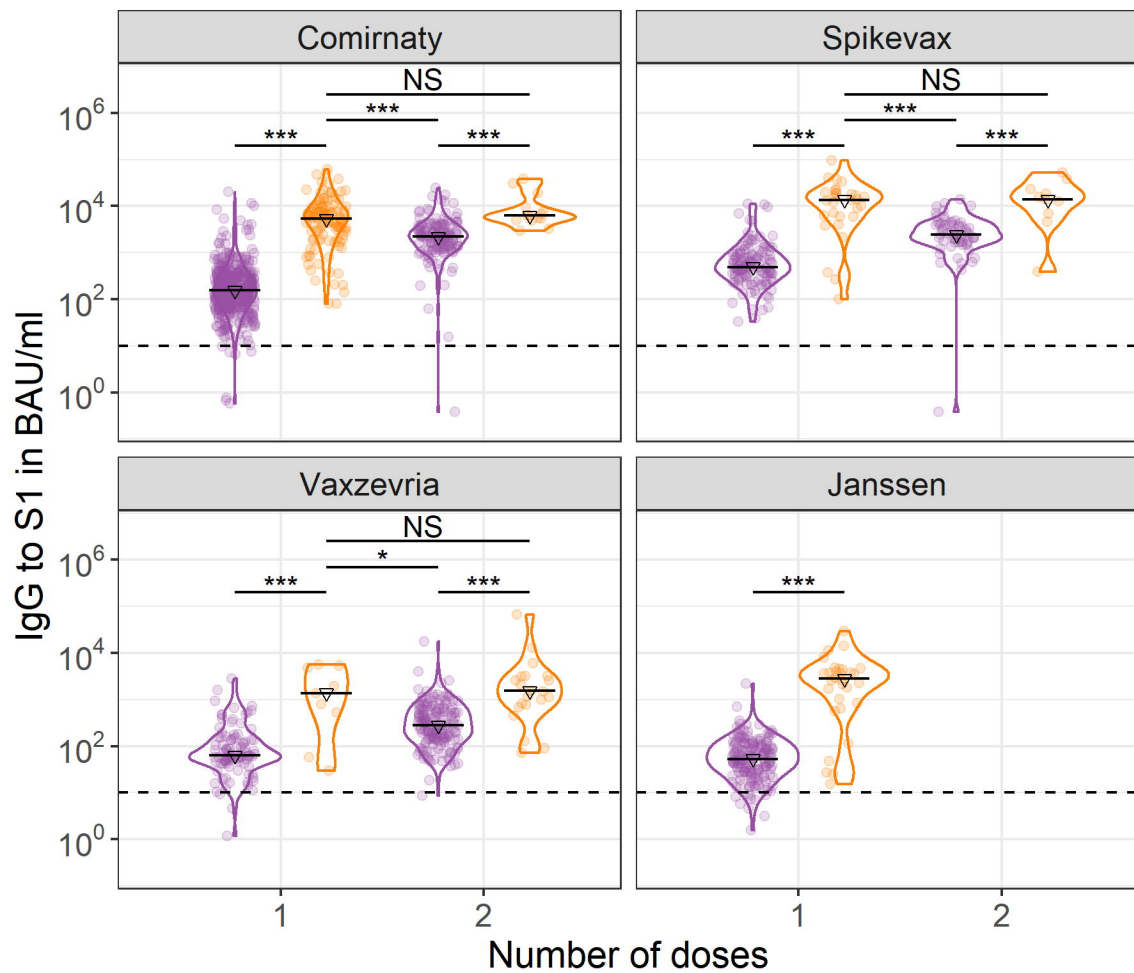
223 **Figure 2: Violin plots of Spike S1 immunoglobulin G (IgG) concentrations by number of COVID-19**
224 **vaccine doses, SARS-CoV-2 infection history and vaccine brand (A) and in SARS-CoV-2-naïve adults**
225 **at two to four months following a completed Comirnaty schedule by age group (B).** Triangles and
226 black horizontal lines represent median concentrations of IgG to Spike S1 in BAU/mL. The dashed
227 horizontal line represents the threshold for seropositivity. In (A) IgG measurements were taken
228 between two weeks and two months after the indicated dose; while in (B) between two and four
229 months after completion of the Comirnaty schedule. Wilcoxon-Mann-Whitney tests were used to
230 test for differences in IgG concentrations by infection history in (A) with blocking for strata of sex,
231 and by age group in (B) with blocking for strata of sex and time since second dose (less versus more
232 than three months). * $p < 0.05$; ** $p < 0.01$; *** $p < 0.001$; NS: not significant ($p > 0.100$); BAU/mL:
233 binding antibody units per mL; IgG: immunoglobulin G.

Comirnaty Spikevax Vaxzevria Janssen SARS-CoV-2-confirmed, unvaccinated



A

Naive Infection history

**B**