

**Supplemental Material for “Temporal and spatial analysis of *Plasmodium falciparum* genomics reveals patterns of connectivity in a low-transmission district in Southern Province, Zambia”**

Kara A. Moser<sup>1</sup>, Ozkan Aydemir<sup>2</sup>, Chris Hennelly<sup>1</sup>, Tamaki Kobayashi<sup>3</sup>, Timothy Shields<sup>3</sup>, Harry Hamapumbu<sup>4</sup>, Michael Musonda<sup>4</sup>, Ben Katowa<sup>4</sup>, Japhet Matoba<sup>4</sup>, Jennifer C. Stevenson<sup>4</sup>, Douglas E. Norris<sup>5</sup>, Philip E. Thuma<sup>4</sup>, Amy Wesolowski<sup>3</sup>, William J. Moss<sup>3</sup>, Jeffrey A. Bailey<sup>2,+</sup>, Jonathan J. Juliano<sup>1,6,7,8,+</sup> on behalf of the Southern and Central African International Center for Excellence in Malaria Research (ICEMR)

<sup>1</sup> Institute for Global Health and Infectious Diseases, University of North Carolina Chapel Hill, NC, USA, 27599

<sup>2</sup> Department of Pathology and Laboratory Medicine, Brown University, RI, USA, 02906

<sup>3</sup> Department of Epidemiology, Johns Hopkins Bloomberg School of Public Health, Baltimore, MD, USA, 21205

<sup>4</sup> Macha Research Trust, Choma District, Zambia

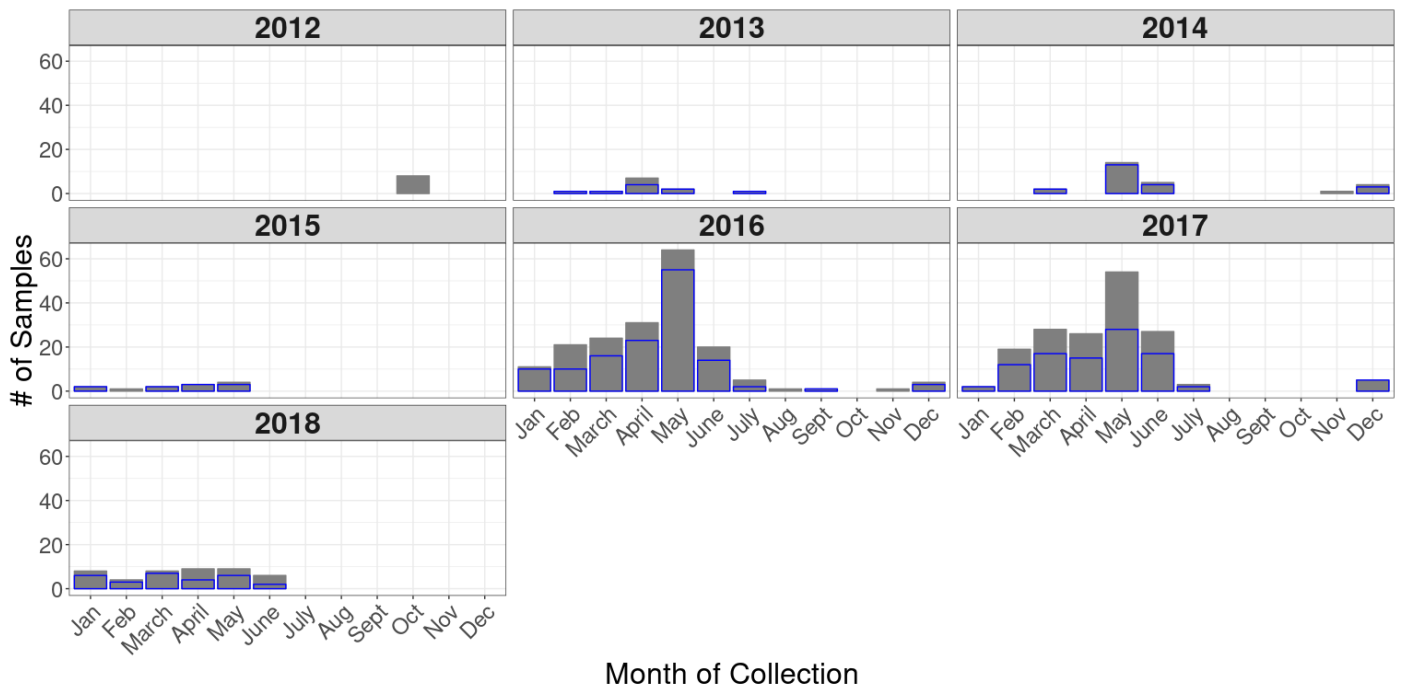
<sup>5</sup> Department of Molecular Microbiology and Immunology, The Johns Hopkins Malaria Research Institute, Johns Hopkins Bloomberg School of Public Health, Baltimore, MD, USA, 21205

<sup>6</sup> Division of Infectious Diseases, School of Medicine, University of North Carolina Chapel Hill, Chapel Hill, NC 27599

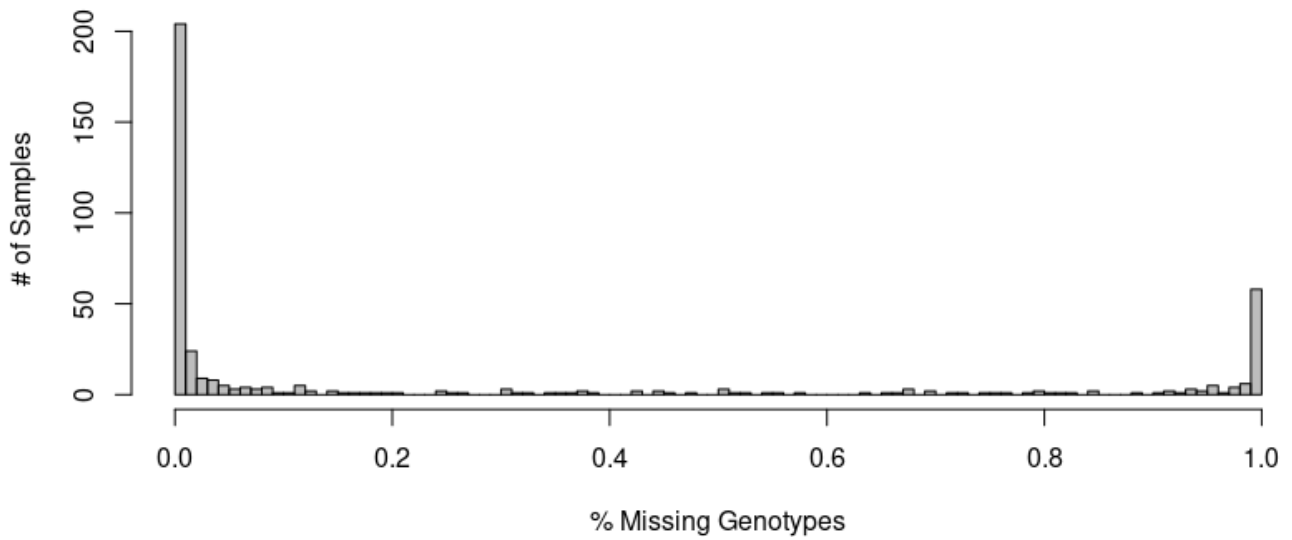
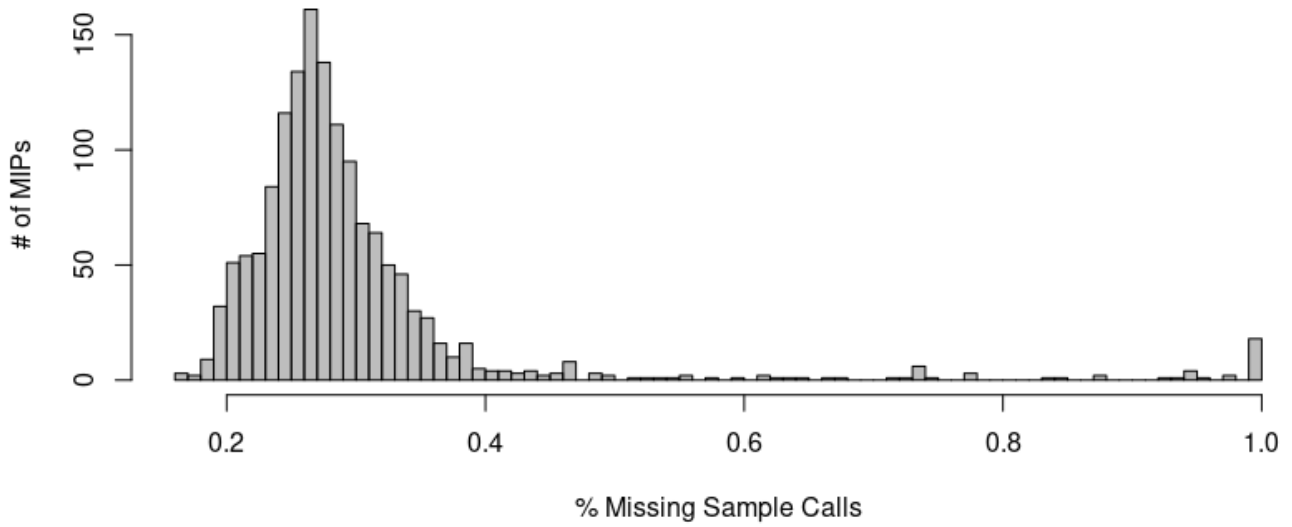
<sup>7</sup> Department of Epidemiology, Gillings School of Global Public Health, University of North Carolina Chapel Hill, Chapel Hill, NC, USA, 27599

<sup>8</sup> Curriculum in Genetics and Molecular Biology, School of Medicine, University of North Carolina Chapel Hill, Chapel Hill, NC 27599

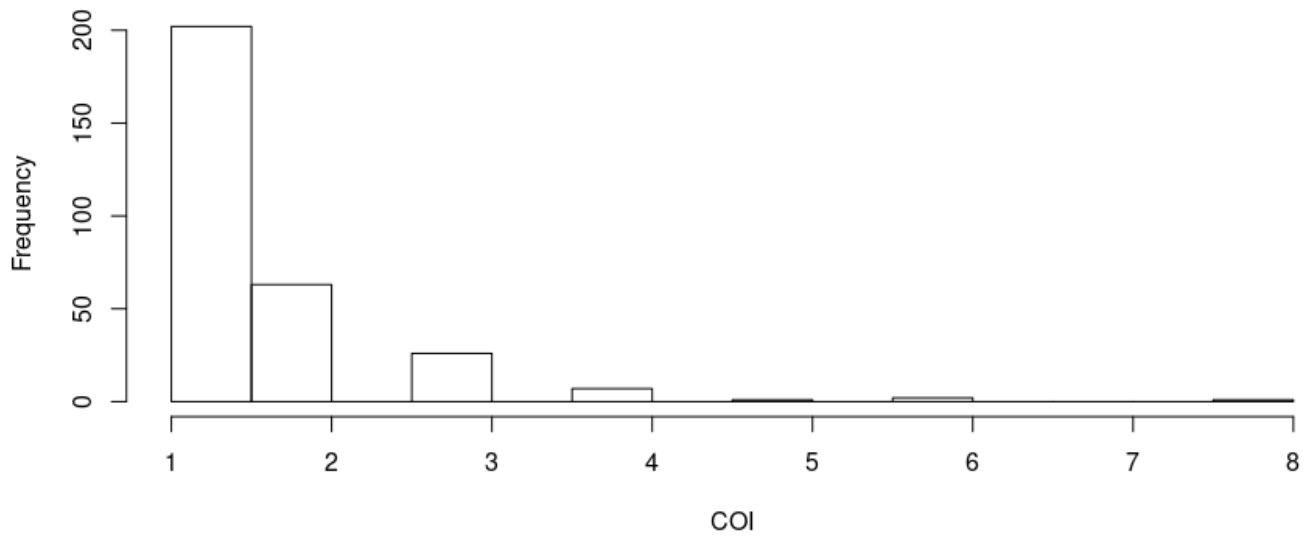
**SUPPLEMENTAL FIGURES**



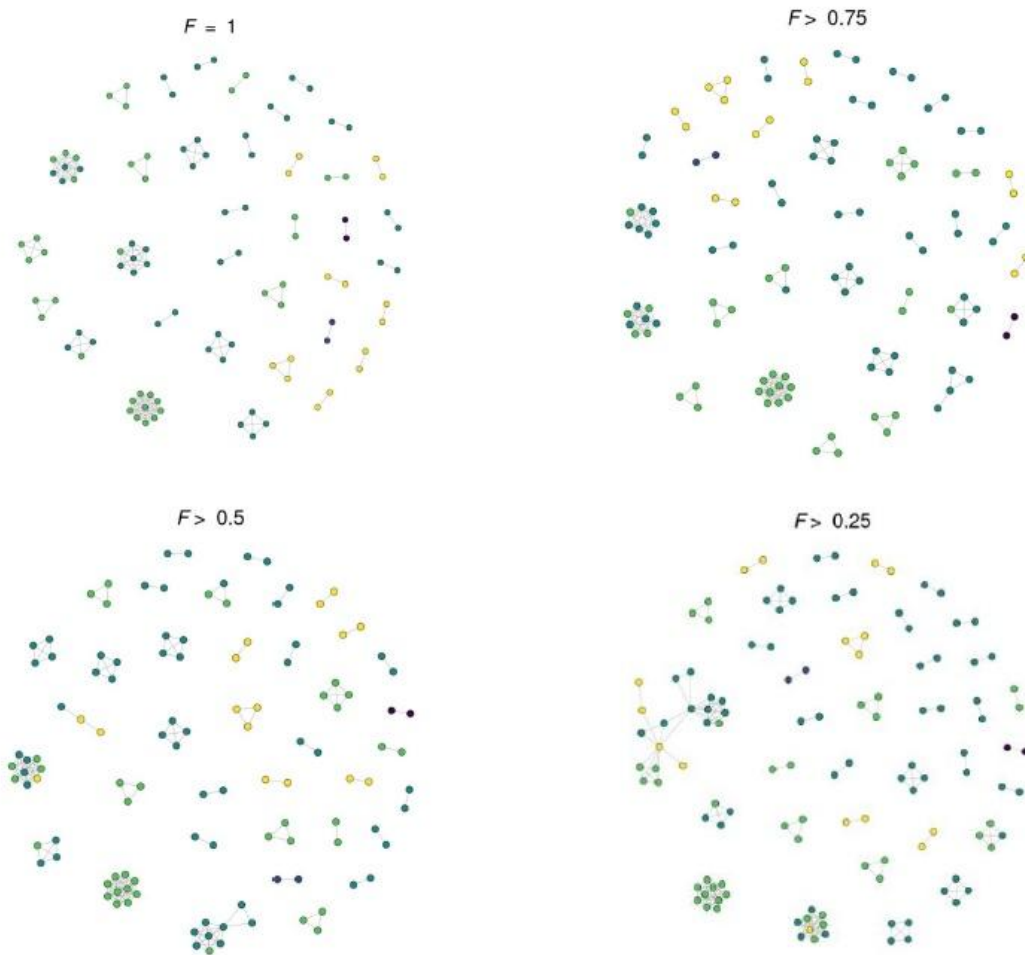
**Figure S1: Retained samples after filtering.** Total number of samples collected (in grey) are tallied by year and month of collection. Number of samples retained for analysis after filtering are shown in blue. No samples from 2012 were used for downstream analyses.



**Figure S2: Missingness by probe and sample.** Distribution of missingness across each individual targeted MIP position (top), and distribution of missingness across samples (bottom).



**Figure S3: Distribution of complexity of infection (COI) estimates from 302 genotyped infections.** The frequency of different COI determined by the RealMcCoil are shown.



**Figure S4: Network analysis of parasite relatedness across season at varying degrees of relatedness.** Networks of monoclonal samples were generated at varying levels of genetic relatedness using the  $F$  statistic. The season in which a sample was collected is designated by the color of the circle. As the level of genetic relatedness decreases, increasingly complex networks begin to form and extend over multiple seasons.