

Supplementary materials

Contents	Page numbers
Supplementary figure legends	1
Supplementary figure 1: The gating strategy of flow cytometry	2
Supplementary figure 2: Comparisons of S2 binding antibody responses between PLWH and healthy individuals	3
Supplementary figure 3: Baseline CD4/CD8 ratios were not significantly associated with the vaccine elicited T cells responses in PLWH	4
Supplementary figure 4: The vaccine induced activation of CD4+ T cells in individuals with elevated viral loads tended to be higher than those in viral load decreased individuals	5

Supplementary figure legends

Supplementary Figure 1 The gating strategy of flow cytometry

Supplementary Figure 2 Comparisons of S2 binding antibody responses between PLWH and healthy individuals

The SARS-CoV-2 S2 specific binding antibodies were detected using an in-house ELISA method. The inactivated COVID-19 vaccine elicited similar levels of S2 binding antibodies in PLWH and HC. Statistical analyses were performed by the method of non-parametric t test. ****, $P < 0.0001$.

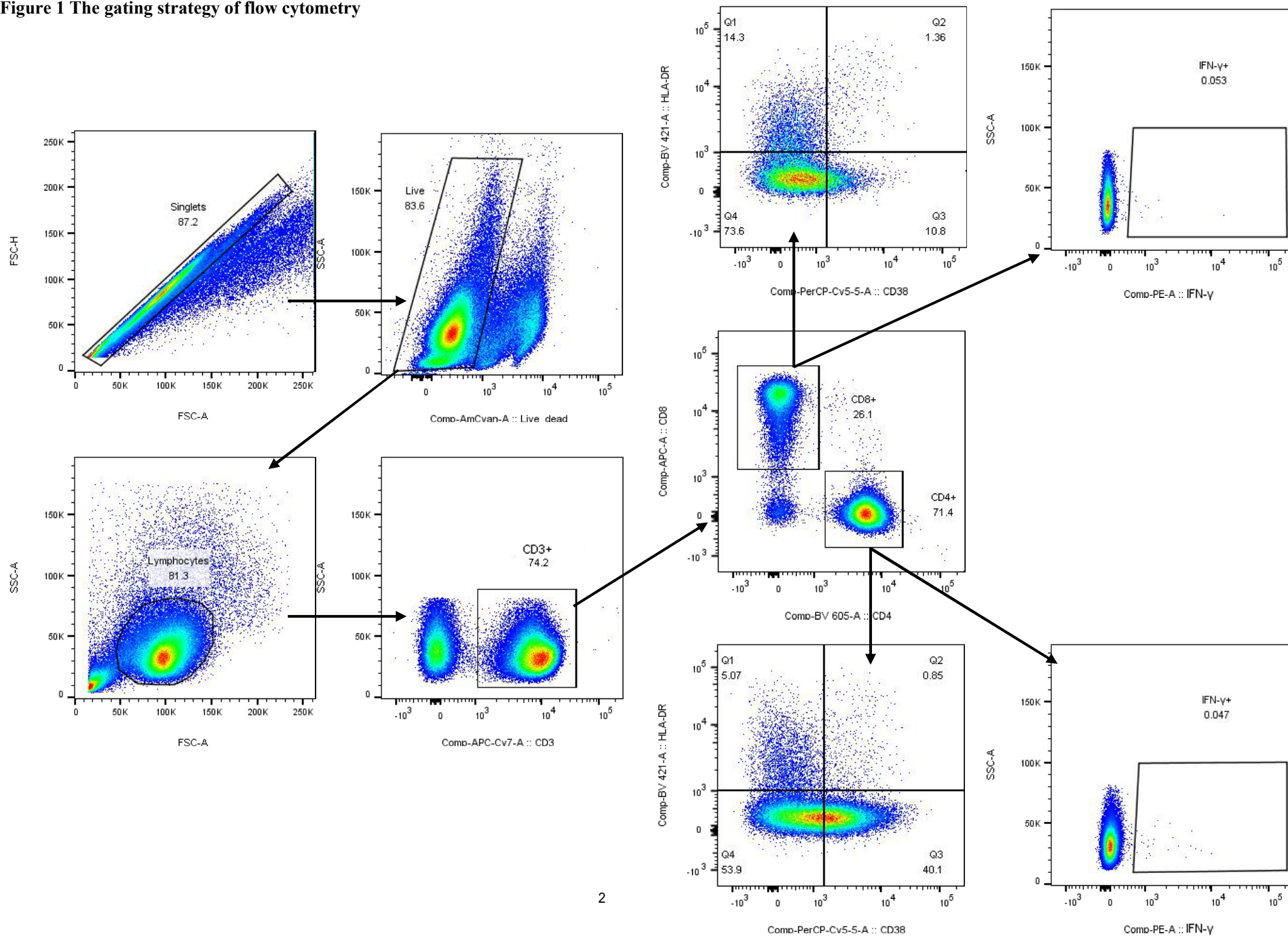
Supplementary Figure 3 Baseline CD4/CD8 ratios were not significantly associated with the vaccine elicited T cells responses in PLWH

HIV-1 infected participants were stratified into 3 subgroups according to their baseline CD4⁺/CD8⁺ T cell ratios (<0.6, 0.6~1.0 and ≥1.0). S protein specific IFN- γ secreting CD4⁺ (A) and CD8⁺ T cells (B) were compared among the three subgroups. Statistical analyses were performed by the method one-way ANOVA.

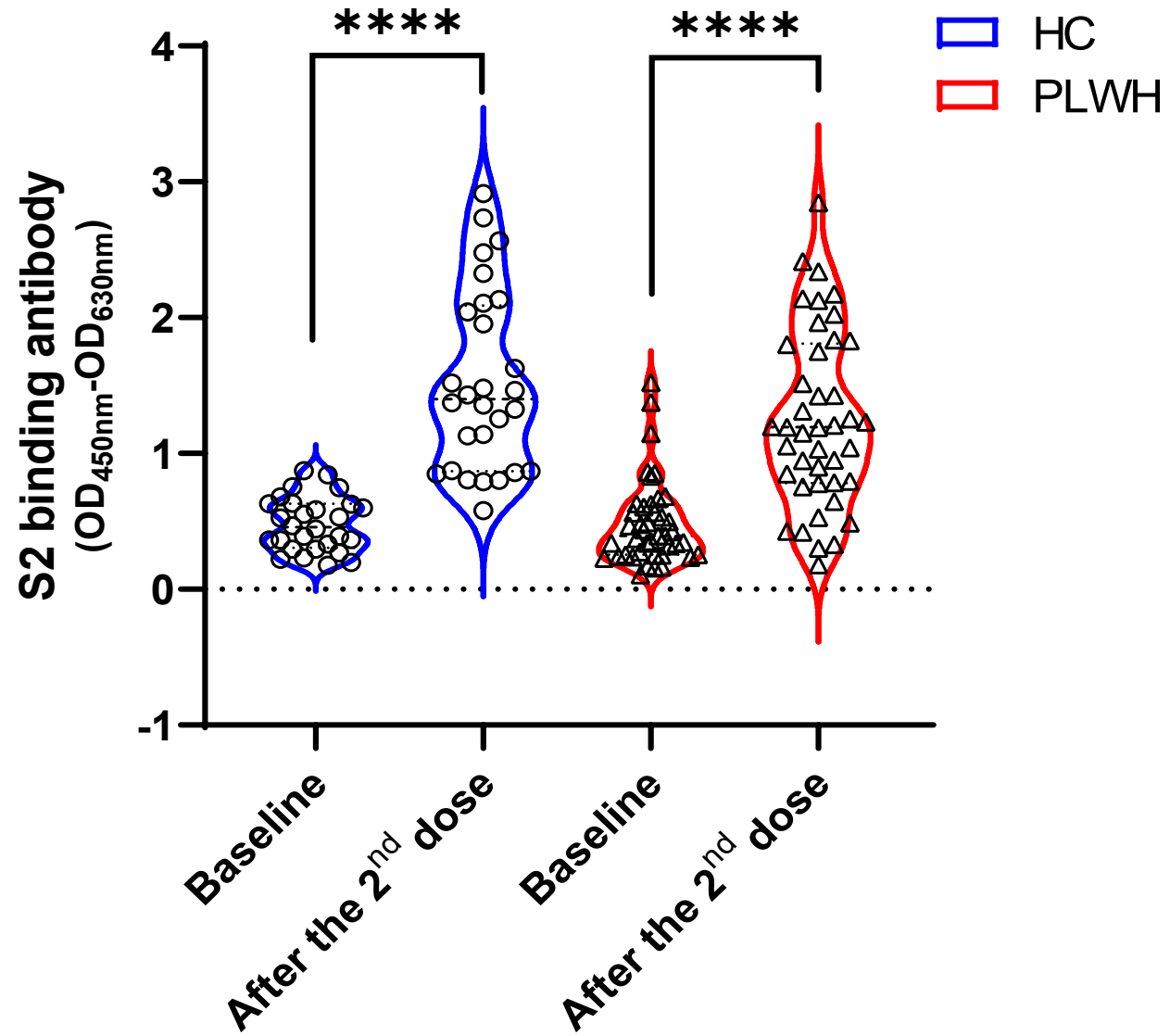
Supplementary Figure 4 The vaccine induced activation of CD4⁺ T cells in individuals with elevated viral loads tended to be higher than those in viral load decreased individuals

Among the PLWH cohort, 14 participants were found with decreased HIV-1 viral loads and 5 participants showed increased HIV-1 viral loads after two doses of vaccination. The activation levels of CD4⁺ T cells were compared between these two subgroups. (A) The fold changes (After the 2nd vaccination/baseline) of CD38⁺HLA-DR⁺CD4⁺ T cell percentages. (B) The fold changes of CD38⁺HLA-DR⁺CD4⁺ T cell percentages. (C) The fold changes of CD38⁺HLA-DR⁺CD4⁺ T cell percentages.

Supplementary Figure 1 The gating strategy of flow cytometry

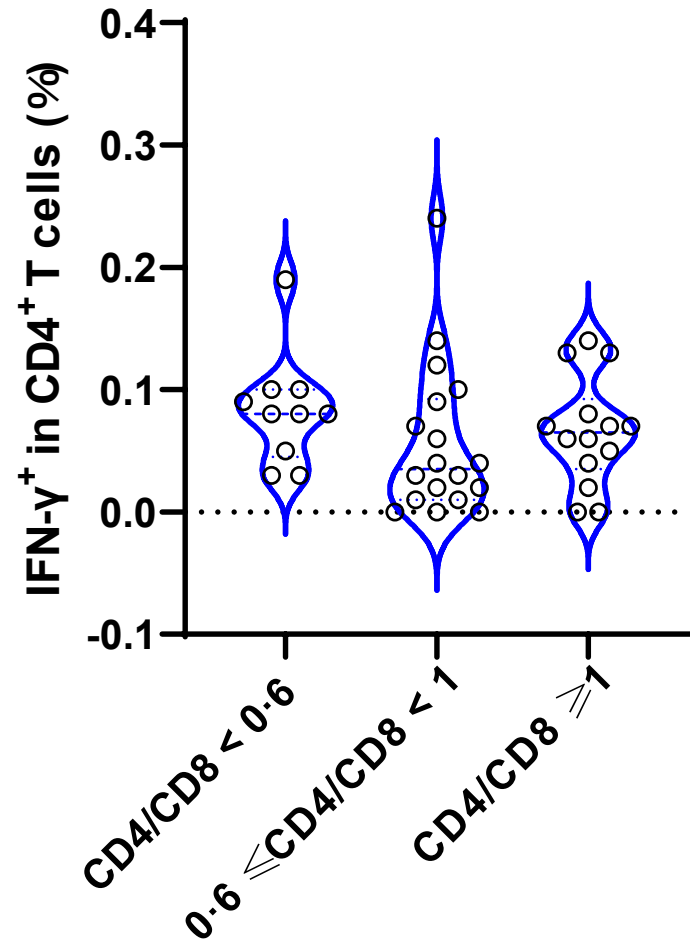


Supplementary Figure 2 Comparisons of S2 binding antibody responses between PLWH and healthy individuals

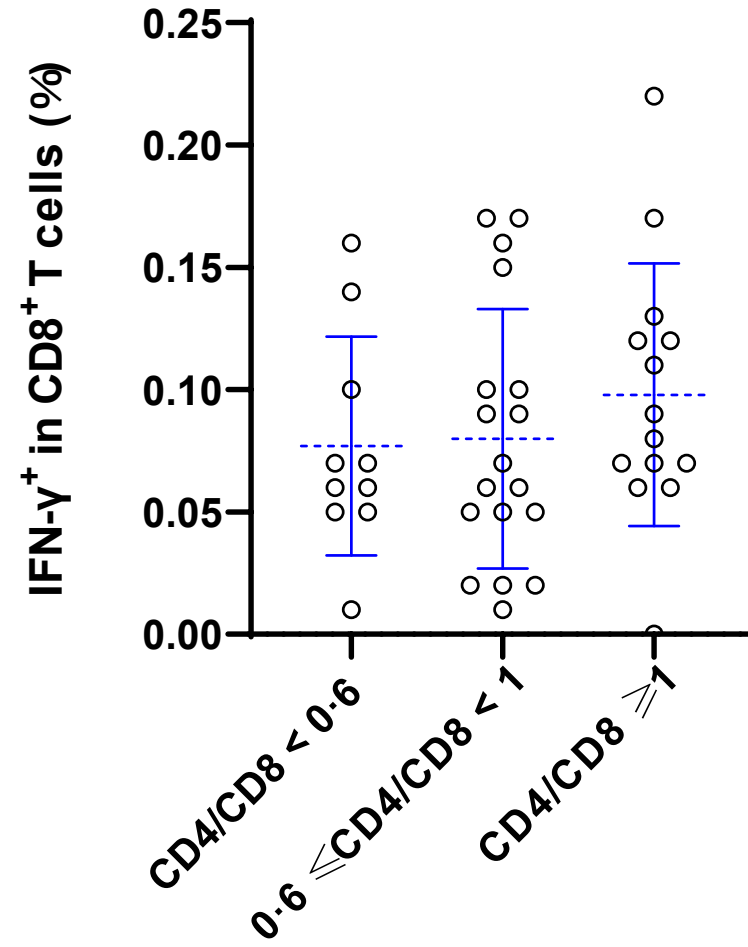


Supplementary Figure 3 Baseline CD4/CD8 ratios were not significantly associated with the vaccine elicited T cells responses in PLWH

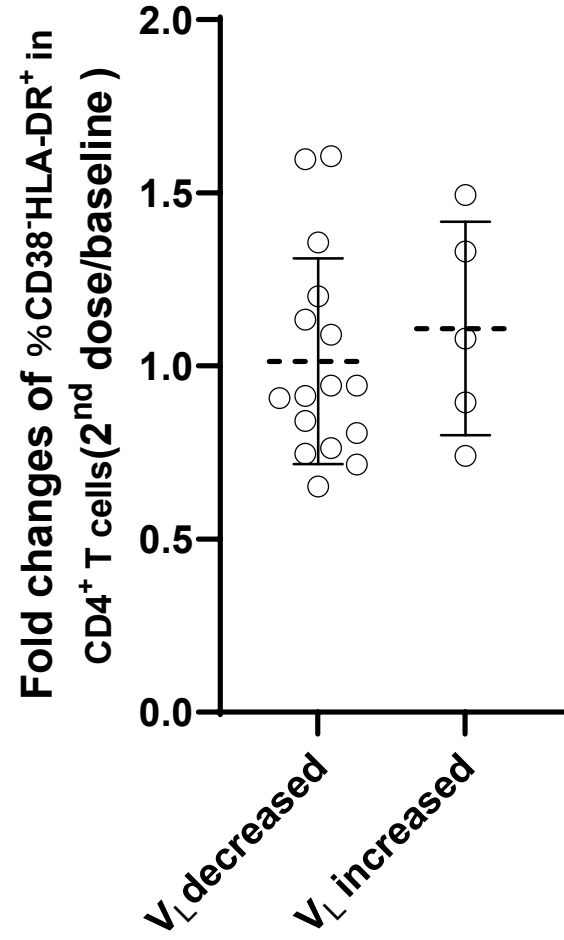
A



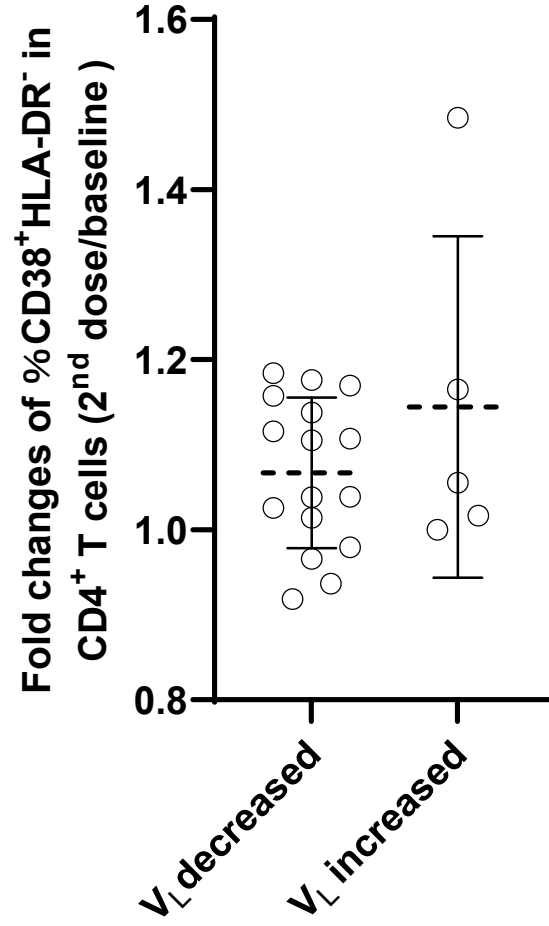
B



A



B



C

