

Genomic epidemiology reveals how restriction measures shaped the SARS-CoV-2 epidemic in Brazil

Marta Giovanetti^{1,2*}, Svetoslav Nanev Slavov^{3,4*}, Vagner Fonseca^{1,5,6,7*}, Eduan Wilkinson^{6,7*}, Houriiyah Tegally^{6,7*}, José Salvatore Leister Patané^{4*}, Vincent Louis Viala⁴, Emmanuel James San^{6,7}, Evandra Strazza Rodrigues³, Elaine Vieira Santos³, Flavia Aburjaile^{2,8}, Joilson Xavier^{1,8}, Hegger Fritsch^{1,8}, Talita Emile Ribeiro Adelino^{1,8}, Felicidade Pereira⁹, Arabela Leal⁹, Felipe Campos de Melo Iani⁸, Glauco de Carvalho Pereira⁸, Cynthia Vazquez¹⁰, Gladys Mercedes Estigarribia Sanabria^{11,12,13}, Elaine Cristina de Oliveira¹⁴, Luiz Demarchi¹⁵, Julio Croda¹⁶, Rafael dos Santos Bezerra³, Loyze Paola Oliveira de Lima⁴, Antonio Jorge Martins⁴, Claudia Renata dos Santos Barros⁴, Elaine Cristina Marqueze⁴, Jardelina de Souza Todao Bernardino⁴, Debora Botequiao Moretti⁴, Ricardo Augusto Brassaloti¹⁷, Raquel de Lello Rocha Campos Cassano¹⁷, Pilar Drummond Sampaio Corrêa Mariani¹⁸, João Paulo Kitajima¹⁹, Bibiana Santos¹⁹, Rodrigo Proto-Siqueira²⁰, Vlademir Vicente Cantarelli²¹, Stephane Tosta^{2,9}, Vanessa Brandão Nardy⁹, Luciana Reboredo de Oliveira da Silva⁹, Marcela Kelly Astete Gómez⁹, Jaqueline Gomes Lima⁹, Adriana Aparecida Ribeiro⁸, Natália Rocha Guimarães⁸, Luiz Takao Watanabe¹⁴, Luana Barbosa Da Silva¹⁴, Raquel da Silva Ferreira¹⁴, Mara Patricia F. da Penha²², María José Ortega¹⁰, Andrea Gómez de la Fuente¹⁰, Shirley Villalba¹⁰, Juan Torales¹⁰, María Liz Gamarra¹⁰, Carolina Aquino¹⁰, Gloria Patricia Martínez Figueredo^{11,12,13}, Wellington Santos Fava¹⁶, Ana Rita C. Motta-Castro¹⁶, James Venturini¹⁶, Sandra Maria do Vale Leone de Oliveira¹⁶, Crhistine Cavalheiro Maymone Gonçalves²³, Maria do Carmo Debur Rossa²⁴, Guilherme Nardi Becker²⁴, Mayra Marinho Presibella²⁴, Nelson Quallio Marques²⁴, Irina Nastassja Riediger²⁴, Sonia Raboni²⁵, Gabriela Mattoso Coelho²⁶, Allan Henrique Depieri Cataneo²⁶, Camila Zanluca²⁶, Claudia N Duarte dos Santos²⁶, Patricia Akemi Assato²⁷, Felipe Allan da Silva da Costa²⁷, Mirele Daiana Poleti²⁸, Jessika Cristina Chagas Lesbon²⁸, Elisangela Chicaroni Mattos²⁸, Cecilia Artico Banho²⁹, Lívia Sacchetto²⁹, Marília Mazzi Moraes²⁹, Rejane Maria Tommasini Grotto^{27,30}, Jayme A. Souza-Neto²⁷, Maurício Lacerda Nogueira²⁹, Heidge Fukumasu²⁸, Luiz Lehmann

Coutinho¹⁷, Rodrigo Tocantins Calado³, Raul Machado Neto⁴, Ana Maria Bispo de Filippis¹, Rivaldo Venancio da Cunha³¹, Carla Freitas⁵, Cassio Roberto Leonel Peterka³², Cássia de Fátima Rangel Fernandes³³, Wildo Navegantes de Araújo³⁴, Rodrigo Fabiano do Carmo Said³⁴, Maria Almiron³⁴, Carlos Frederico Campelo de Albuquerque e Melo³⁴, José Lourenço³⁵, Tulio de Oliveira^{6,7,36,37}, Edward C. Holmes³⁸, Ricardo Haddad⁴, Sandra Coccuzzo Sampaio^{4^}, Maria Carolina Elias^{4^}, Simone Kashima^{3^}, Luiz Carlos Junior de Alcantara^{1,2^}, Dimas Tadeu Covas^{3,4^}.

*These authors jointly contributed to this work

^These authors jointly supervised this work

Corresponding Authors: sandra.coccuzzo@butantan.gov.br, carolina.eliassabbaga@butantan.gov.br, skashima@hemocentro.fmrp.usp.br, luiz.alcantara@ioc.fiocruz.br, dimas.covas@butantan.gov.br

¹ Laboratório de Flavivírus, Fundação Oswaldo Cruz, Rio de Janeiro, Brazil; ² Laboratório de Genética Celular e Molecular, Instituto de Ciências Biológicas, Universidade Federal de Minas Gerais, Belo Horizonte, Minas Gerais, Brazil; ³ University of São Paulo, Ribeirão Preto Medical School, Blood Center of Ribeirão Preto, Ribeirão Preto, SP, Brazil; ⁴ Butantan Institute, São Paulo, Brazil; ⁵ Coordenação Geral de Laboratórios de Saúde Pública/Secretaria de Vigilância em Saúde, Ministério da Saúde (CGLAB/SVS-MS) Brasília, Distrito Federal, Brazil; ⁶ KwaZulu-Natal Research Innovation and Sequencing Platform (KRISP), School of Laboratory Medicine and Medical Sciences, College of Health Sciences, University of KwaZulu-Natal, Durban, South Africa; ⁷ Centre for Epidemic Response and Innovation (CERI), School of Data Science and Computational Thinking, Stellenbosch University; Stellenbosch, South Africa; ⁸ Laboratório Central de Saúde Pública do Estado de Minas Gerais, Fundação Ezequiel Dias, Belo Horizonte, Minas Gerais, Brazil; ⁹ Laboratório Central de Saúde Pública da Bahia–LACEN-BA, Salvador, Bahia, Brazil; ¹⁰ Laboratorio Central de Salud Pública, Asunción, Paraguay; ¹¹ Universidad Nacional del Caaguazú, Instituto Regional de Investigación en Salud; ¹² Laboratorio de Biología Molecular, Hospital Regional de Coronel Oviedo; ¹³ Ministerio de Salud Pública y Bienestar Social; ¹⁴ Laboratório Central de Saúde Pública do Estado de Mato Grosso, Cuiabá, Brazil; ¹⁵ Laboratório Central de Saúde Pública do Estado de Mato Grosso do Sul, Campo Grande, Mato Grosso do Sul, Brazil; ¹⁶ Universidade Federal de Mato Grosso do Sul; ¹⁷ University of São Paulo,

Centro de Genômica Funcional da ESALQ, Piracicaba, SP, Brazil; ¹⁸NGS Soluções Genômicas, Piracicaba, SP, Brazil; ¹⁹Mendelics Análise Genômica; ²⁰Instituto de Biologia Molecular, Laboratório Antonello, Rio Grande do Sul, Brazil; ²¹Universidade Federal de Ciências da Saúde de Porto Alegre (UFCSA), Universidade Feevale, Grupo Exame Laboratórios, Rio Grande do Sul, Brazil; ²²Vigilância em Saúde do Estado de Mato Grosso, Cuiabá, Brazil; ²³Secretaria de Saúde do Estado do Mato Grosso do Sul; ²⁴Laboratório Central do Estado do Paraná (Lacen/PR); ²⁵Hospital de Clínicas da Universidade Federal do Paraná, Curitiba, PR; ²⁶Laboratório de Virologia Molecular - Instituto Carlos Chagas/Fiocruz PR, Curitiba, PR; ²⁷São Paulo State University (UNESP), School of Agricultural Sciences, Department of Bioprocesses and Biotechnology, Botucatu, Brazil; ²⁸Department of Veterinary Medicine, School of Animal Science and Food Engineering, University of Sao Paulo, Pirassununga, São Paulo, Brazil; ²⁹Laboratório de Pesquisas em Virologia, Departamento de Doenças Dermatológicas, Infecciosas e Parasitárias, Faculdade de Medicina de São José do Rio Preto; ³⁰Molecular Biology Laboratory, Applied Biotechnology Laboratory, Clinical Hospital of the Botucatu Medical School, Brazil; ³¹Fundação Oswaldo Cruz, Bio-Manguinhos, Rio de Janeiro, Rio de Janeiro, Brazil; ³²Coordenação Geral das Arboviroses, Secretaria de Vigilância em Saúde/Ministério da Saúde (CGARB/SVS-MS), Brasília, Distrito Federal, Brazil; ³³Departamento de Imunização e Doenças Transmissíveis/Secretaria de Vigilância em Saúde, Ministério da Saúde, Brasília, Distrito Federal, Brazil; ³⁴Organização Pan-Americana da Saúde/Organização Mundial da Saúde, Brasília, Distrito Federal, Brazil; ³⁵Department of Zoology, Peter Medawar Building, University of Oxford, Oxford, UK; ³⁶Centre for the AIDS Programme of Research in South Africa (CAPRISA), Durban, South Africa; ³⁷Department of Global Health, University of Washington, Seattle, WA, USA; ³⁸Sydney Institute for Infectious Diseases, School of Life and Environmental Sciences and School of Medical Sciences, University of Sydney, Sydney, NSW, Australia

Abstract

Brazil has experienced some of the highest numbers of COVID-19 infections and deaths globally and made Latin America a pandemic epicenter from May 2021. Although SARS-CoV-2 established sustained transmission in Brazil early in the pandemic, important gaps remain in our understanding of local virus transmission dynamics. Here, we describe the genomic epidemiology of SARS-CoV-2 using near-full genomes sampled from 27 Brazilian states and an adjacent country - Paraguay. We show that the early stage of the pandemic in Brazil was characterised by the co-circulation of multiple viral lineages, linked to multiple importations predominantly from Europe, and subsequently characterized by large local transmission clusters. As the epidemic progressed, the absence of effective restriction measures led to the local emergence and international spread of Variants of Concern (VOC) and under monitoring (VUM), including the Gamma (P.1) and Zeta (P.2) variants. In addition, we provide a preliminary genomic overview of the epidemic in Paraguay, showing evidence of importation from Brazil. These data reinforce the need for the implementation of widespread genomic surveillance in South America as a toolkit for pandemic monitoring and providing a means to follow the real-time spread of emerging SARS-CoV-2 variants with possible implications for public health and immunization strategies.

Introduction

At the end of 2019, a novel respiratory pathogen designated the Severe Acute Respiratory Syndrome coronavirus 2 (SARS-CoV-2) emerged in the city of Wuhan, China. Since its identification, the virus has spread rapidly on a global scale causing an unprecedented

coronavirus disease 2019 (COVID-19) pandemic (declared on March 11th, 2020) which has overwhelmed many health care systems¹. By the end of September 2021, more than 230 million cases of COVID-19, with more than 4.7 million associated deaths, have been reported globally². Brazil has become the epicentre of the COVID-19 epidemic in the Americas, with a total of 21.2 million cases and a death toll exceeding 591,000 reported cases by the end of September of 2021, making it one of the countries hardest hit by COVID-19 mortality globally³. Critically, however, a lack of genome sequence data from Brazil has limited our ability to fully understand local transmission dynamics, for example, what was the impact of pharmaceutical and nonpharmaceutical interventions on the spread of the virus.

To assess how population restriction measures might have played a role in shaping viral diversity and evolution during the SARS-CoV-2 epidemic in Brazil we performed a phylogenetic and phylogeographic analysis of genomic data from 27 Brazilian states and one neighbouring country - Paraguay. We show that the early spread of SARS-CoV-2 in Brazil resulted from initial founder events associated with international travel (mainly from Europe), which then spread through regional mobility pathways during recession of the first epidemic wave. From this, Brazil emerged as an exporter of SARS-CoV-2 variants to other countries. We further describe the emergence and spread of key viral Variants of Concern (VOCs; for example, Gamma) and under monitoring (VUMs; for example, Zeta) in Brazil, highlighting how their emergence may have contributed to a more severe second wave in the country.

Results

COVID-19 transmission dynamics in Brazil

The first confirmed infection of SARS-CoV-2 in Brazil was recorded on February 26th 2020 in the State of São Paulo (SP), in a traveller returning from Italy (**Fig. 1A**). On March 17th 2020 the first COVID-19-related death, a 61-year old male, was reported in the same state^{4,5}. Four days later, all Brazilian states reported at least one confirmed case of COVID-19 and the Brazilian Ministry of Health (BR-MoH) declared an outbreak of large-scale community transmission of the virus⁶. By April 10th 2020 the virus had already reached remote locations such as the Yanomami indigenous community located in the state of Roraima, in northern Brazil⁶ (**Fig. 1A**).

After the World Health Organization (WHO) declared the outbreak of SARS-CoV-2 as a public health emergency of international concern on January 30th 2020 the Brazilian government introduced restriction measures to mitigate viral spread (**Fig. 1A**)⁷. The primary measure involved social isolation, followed by the closure of schools, universities, and non-essential businesses⁸. Additional measures included the mandatory use of personal protective masks⁹, the cancellation of events expected to attract large numbers of people and tourists, and only services considered as essential such as markets and pharmacies remained open^{8,10}. However, while the epidemic was growing, restriction measures were progressively eased to mitigate negative impacts on the economy. Notably, even during periods of restriction, travel between Brazilian states largely remained possible, sustaining SARS-CoV-2 transmission throughout the country¹¹. The latter was likely linked to the emergence of a new and more contagious viral lineages documented as a VOC - Gamma (lineage P.1) - and a VUM - Zeta (lineage P.2), which may also have contributed to a more severe second wave (**Fig. 1B**)^{11,13,14,15}.

Since March 2021 the COVID-19 death toll in Brazil has been steadily rising. It reached a daily total of 4,250 on April 2021, the highest number of daily fatalities from COVID-19

worldwide (**Fig. 1B**). Signs of collapse of the health system were reported in numerous cities among different regions of the country. The situation worsened considerably following the emergence of multiple VOCs and VUMs in parallel with a slow progress of the vaccination campaign¹⁶. Vaccination in Brazil began on January 17th 2021 when the Instituto Butantan imported the first 6 million doses of CoronaVac (a whole virus inactivated vaccine) in a collaboration with Sinovac Biotech (**Fig. 1 A**)^{17,18}. As of August 15th, 2021 approximately 54% of the Brazilian population have been vaccinated with the first dose of any of the vaccines currently available (CoronaVac, AstraZeneca, Pfizer and Janssen), and only 22% had been fully vaccinated (i.e. a single dose of Janssen or both doses of the other vaccines)¹⁹.

By analyzing the total number of COVID-19 notified cases by the end of September 2021, we observed that the Brazilian region with the highest population density (Southeast) concentrated most of the cases registered in the country, with São Paulo being the state with the largest number of cases (n=4,369,410) in that period (1C). However, when we consider the incidence rate (number of reported cases/population) by state, we found that the Midwest, the least populated region in Brazil, registered the highest incidence rate, with 13,604.23 cases/100K inhabitants¹.

SARS-CoV-2 genomic data

A total of 3866 near-full genomes sequences from SARS-CoV-2 RT-qPCR positive samples were obtained as part of this study. SARS-CoV-2 sequencing spanned February 2020 to June 2021, sampled from 8 of the 27 Brazilian states (São Paulo=3309; Rio Grande do Sul=48; Paraná=55; Minas Gerais=80; Mato Grosso do Sul=36; Mato Grosso=51; Bahia=224) and one neighbouring country, Paraguay (n=63). Almost half of the sequences were from the Southeast

of Brazil, consistent with it being responsible for most reported cases in the country (**Fig. 1B**)⁶. The sequenced samples were collected from 2,023 females and 1,843 males (**Table S1 and S2**) with a median age of 41.72 years (range: 1 to 90 years of age). All tested samples contained sufficient viral genetic material ($\geq 2\text{ng}/\mu\text{L}$) for library preparation. For positive samples, PCR cycle threshold (Ct) values were on average 19.93 (range: 10.75 to 30). Sequences had a median genome coverage of 95% (range: 80 to 99.99) and average genome coverage was typically higher for samples with lower Ct values (**Fig. S1**). Epidemiological information and sequencing statistics of the generated sequences from Brazil and Paraguay are detailed in **Tables S1 and S2**, respectively. Sequences were assigned to 39 different PANGO-lineages based on the proposed dynamic nomenclature for SARS-CoV-2 lineages (**Fig. S1, Table S1 and S2**) and have been submitted to GISAID following the WHO guidelines (**Tables S1 and S2**) (version 3.1.7, August 2021).

Phylogenetic inference and lineage diversity

The rapid spread of SARS-CoV-2 together with the reported circulation of several VOCs and VUMs in Brazil prompted the intensification of genomic surveillance by the National Network for Pandemic Alert of SARS-CoV-2 by the end of December 2020. As of June 30th 2021 some 17,135 SARS-CoV-2 Brazilian genomes had been deposited in the GISAID database from all 27 Brazilian states (**Fig. 2A**). The states with the highest number of sequenced genomes were São Paulo (n=9,600) and Rio de Janeiro (n=2,031). Although genomic surveillance started as soon as the first confirmed infections were detected in Brazil, by the end of June 2021 there was still a paucity of genomic data from some states such as Roraima (n=29), Acre (n=29), Rondônia (n=37), Tocantins (n=27), Piauí (n=19) and the Federal District (n=33) (**Fig. 2A**). Half

of all Brazilian genomes were deposited in early 2021, suggesting intensified surveillance in the second wave following the detection of Gamma (and other VOCs (e.g. Alpha/B.1.1.7) and VUMs (e.g. Zeta) throughout the country (**Fig. 2B**).

To obtain a better understanding of the dynamics of SARS-CoV-2 spread in Brazil we coupled epidemiological data with phylodynamic analysis for a data set comprising 25,288 available representative genomes from around the world, including the new genomes obtained in this study (n=3,866) sampled from December 26th 2019 to June 28th 2021 (**Fig. 2C, Fig. S2**). A date-stamped phylogeny of these data indicated that most of the Brazilian sequences were interspersed with those introduced from several countries (**Fig. 2C, 2D**). This pattern further indicated that the co-circulation of multiple SARS-CoV-2 lineages over time was linked to multiple importations followed by large local transmissions concomitant with a high number of infections (**Fig. 2C, 2D**).

Using an ancestral location state reconstruction on the dated phylogeny we were able to infer the number of viral imports and exports between Brazil and the rest of the world, and between individual Brazilian regions (hereafter referred as the North, Northeast, Midwest, Southeast and South regions) (**Fig. 2D-F**). The bulk of imported introductions (estimated to be 114 independent ones) were largely from Europe (**Fig. 2D**), occurring before the implementation of restriction measures (April 2020) when the epidemic was rapidly progressing (**Fig. 2D, E**). However, at least 33 introduction events are inferred to have occurred during enforcement of preventive measures up to August 2020 (**Fig. 2D, E**), and hence before those measures were

loosened. Finally, although Brazil was a major virus importer, there were approximately 10 times more inferred exportation events out of Brazil than viral introductions into Brazil (**Fig. 2E**).

Our estimates of viral movement within Brazil further suggested that the Southeast region was the largest contributor of viral exchanges to other regions, comprising approximately 40% of viral movements from one geographical region to another, followed by the North region that contributed to approximately 25% of all viral movements. Although these estimates are in line with epidemiological data, this observation is also likely to be influenced by these two regions having the greatest number of sequences available for analysis.

Spatiotemporal spreading of Brazilian VOC (Gamma) and VUM (Zeta)

We next focused on the two Brazilian variants that evolved from the B.1.1.28 lineage and grew into large transmission clusters during the second wave of the epidemic from January 2021 - the VOC (Gamma/P.1) and VUM (Zeta/P.2). To assess the detailed evolution of these lineages over time we performed a spatiotemporal phylogeographic analysis using a molecular clock model.

The Gamma VOC was first sampled in Brazil in early January 2021^{12,20}. It displayed an unusual number of lineage-defining mutations in the S protein, including three designated that may impact transmission, immune escape, and virulence - N501Y, E484K and K417T²¹⁻²³. In line with previous estimates^{12,20}, our phylogeographic analysis suggested that the Gamma variant emerged around November 21st 2020 (95% highest posterior density, 12-29 November 2020) in Manaus (Amazonas state) in Northern Brazil and spread extensively among Brazilian regions (**Fig. 3A, C**). Our data reveals multiple introductions of this lineage from the Amazonas state to

Brazil's southeastern, northeastern and midwestern states (**Fig. 3C**). By mid-January 2021, the southeastern and northern regions had also facilitated the introduction of this variant into the neighbouring southern region (**Fig 3A, C**).

Zeta (P.2) is defined by the presence of the S:E484K mutation in the receptor binding domain (RBD) and other lineage-defining mutations outside the S protein^{15,24}. Although it was first described in samples from October 2020 in the state of Rio de Janeiro, our phylogeographic reconstruction suggests that the variant originated in the Paraná state, in South Brazil late August 29th, 2020 (95% highest posterior density, 19 August 2020 to 03 September 2020) (**Fig. 4B**). Since then, Zeta has spread multiple times to much of the southeastern, northeastern, midwestern and northern Brazilian regions (**Fig. 4D**). Together, our results further suggest that the transmission dynamics roughly followed population density patterns, moving most often between the most populous localities (**Fig. A, B**).

By estimating the pattern of migration flows we also examined the potential role of Brazil as an exporter of the Gamma and Zeta variants to the rest of the world (**Fig. 3**). While the North region seeded approximately 47% of all Gamma infections into other regions, consistent with it being where this lineage originated, there is strong evidence both from phylogeographic analysis (**Fig. 3A**) and ancestral state reconstruction (**Fig. 3C**) that there was considerable subsequent transfer of Gamma between all different regions. Zeta had a different dispersal pattern to Gamma, with 73% of all Zeta movements originating in the Southeast and South regions, consistent with our phylogeographic reconstruction that this is the geographic source of this lineage (**Fig. 3**).

Our analysis further revealed that Brazil has contributed to the international spread of both variants with at least 316 and 32 exportation events from Brazil to the rest of the world detected for Gamma and Zeta variants, respectively (**Fig. 3E**). Consistent with importations, most exports were to South America (65%) and Europe (14%), followed by Asia (11%), North America (5%), Africa (2.5%) and Oceania (2.5%) with an increase in the number of exportation events between January 2021 and March 2021 coinciding with the second wave of infections in Brazil and some relaxation of international travel restrictions (**Fig. 3E**). Together, our results suggest that virus migration generally followed patterns of national and international human mobility, illustrating how the easing of restriction measures facilitated the spread of those emerging variants throughout the country and their introduction beyond national borders²⁵.

Cross-border SARS-CoV-2 transmission to Paraguay

To explore the burden of the Brazilian SARS-CoV-2 pandemic on other South American countries, we provide a preliminary overview of the SARS-CoV-2 epidemic in Paraguay. The first COVID-19 confirmed case reached Paraguay on March 7th, 2020 in a 32-year-old man from San Lorenzo, Central Department. Thirteen days later the first death and the first case of community transmission were also confirmed. COVID-19 cases in Paraguay rose sharply in March, resulting in 100% occupancy of intensive care beds, prompting the government to declare a strict quarantine to mitigate the spread of the virus^{26,27}. At the end of June 2021 a total number of 460,000 confirmed cases and 16,123 coronavirus-related deaths had been reported in Paraguay²⁶.

The COVID-19 epidemic in Paraguay can generally be characterized by three phases: phase I starting from March 10th, 2020 characterized by restriction measures; phase II since May

4, 2020, also called “Intelligent/Smart Quarantine” with a gradual return to work and social activities; and phase III implemented since October 5th, 2020, known as the "COVID way of living", characterized by the relaxation of the restrictions measures and the reopening of national borders and resumption of international flights²⁷.

Since the beginning of the epidemic there has been a paucity of whole genomes sequences from Paraguay, with only n=165 whole genome sequences available on GISAID by the end of July 2021, about 0.0003% of known cases. This seriously impacts the ability to characterize the molecular epidemiology SARS-CoV-2 at a regional level. In collaboration with the National Public Health Laboratory of Asunción in Paraguay we obtained a total of 63 near complete genome sequences sampled between July 2020 and June 2021, representing ~ 40% of the currently available genomes from this country. As expected, we observed the co-circulation of multiple SARS-CoV-2 lineages (**Fig. 4B**), linked to multiple importations and subsequently characterized by large transmission clusters. Our phylogenetic analysis revealed that most of the SARS-CoV-2 variants currently circulating in Paraguay, including VOCs, were derived from Brazil (**Fig. 4**). This reinforces how crucial the implementation of nonpharmaceutical measures is in containing and preventing the spread of viral strains into neighbouring countries.

As of July 31th,2021 a total of 78% of available genomic sequences from Paraguay were linked to infections caused by Brazilian variants, with the Gamma VOC the most prevalent lineage in the country. As genome sequencing is not widespread, it is difficult to determine how widely these variants have spread to Paraguay and other Latin American countries. However, the abundant COVID-19 cases in Brazil, a country that shares borders with ten countries, suggests that this risk is likely to be high.

Discussion

Genomic sequencing remains the principal tool to track the spread and evolution of SARS-CoV-2, enabling public health authorities to tailor their control strategies. In addition, genomic data can reveal key properties of emerging viruses, including precise epidemiological behaviour that patient data alone cannot capture. However, the utility of genomic data is marred by sparse sampling and geographic inequities²⁸. Brazil is an important case study, but SARS-CoV-2 sequences from Brazil are only available from a very small fraction of the number of confirmed cases into the country, inhibiting their utility in a public health setting and limiting effective control strategies.

To help overcome these limitations we report genomic data obtained by sequencing 3,866 SARS-CoV-2 infection cases confirmed by RT-qPCR from patients residing in 8 of the 27 Brazilian federal states and one neighbouring country - Paraguay. These were analysed together with $n=13,328$ and $n=102$ available (up to 30, June 20th, 2021) publicly available complete genomes sequences from both countries, respectively. By combining epidemiological and genomic data, we show how the interplay between the implementation of restriction measures and sustained SARS-CoV-2 transmission have shaped the Brazilian epidemic over 20 months, including the dramatic resurgences in case numbers linked with the emergence of VOCs and VUMs. In particular, we show that multiple independent importations of SARS-CoV-2, predominantly from Europe, had occurred in Brazil during the early phase of the epidemic (up to April 2020). We further detected multiple ($n=33$) international introductions which likely occurred during enforcement of preventive measures, highlighting their inefficacy. We also

revealed that during 2020 Brazil transitioned from a viral importer to a viral exporter, resulting in 10 times more inferred exportation events from Brazil than viral introductions into Brazil (**Fig. 2E**). This was likely linked to the identification of Brazilian VOC and VUM, the spread of which (both within Brazil and to other countries) likely followed patterns of population density and mobility¹².

We also provide the first preliminary overview of the SARS-CoV-2 epidemic in Paraguay, revealing a high virus connectivity with Brazil. This spread was likely facilitated by airplane and road networks that form major transport trails linking Brazil to other parts of South America. The rapid unhampered spread of such VOCs and VUMs into South American countries, such as Paraguay, indicates that the land-border controls to curb the international spread of the virus have been largely ineffective and highlights the inherent challenges in screening cross-border travellers to contain the spread of the virus emerge within this region. Our data further suggest that national and international travel restrictions lifted at certain points during the Brazilian epidemic were likely responsible for both virus introduction from international localities and within-country transmission, with infected travelers acting as carriers.

Our study highlights the utility of SARS-CoV-2 genome sequencing for COVID-19 outbreak investigation and the need for more comprehensive country-wide studies of the epidemiology and spread of emerging viral strains. Since the vaccination campaign represents the beginning of a “new normal”, pharmaceutical and nonpharmaceutical intervention must be sufficiently strong to prevent the continuous evolution of SARS-CoV-2 that might negate the impact of vaccination²⁹. The current co-circulation of VUMs and VOCs in Brazil, together with

the slow vaccine rollout, has important implications for public health in this high populous and regionally important country³⁰. Such epidemiological conditions create the perfect environment for the continued evolution of SARS-CoV-2, potentially enabling the emergence of novel variants of altered phenotype.

Materials and Methods

Ethics statement

This research was approved by the Ethics Review Committee of the Pan American Health Organization (PAHOERC.0344.01), the Federal University of Minas Gerais (CEP/CAAE: 32912820.6.1001.5149), the University of São Paulo (CEP/FZEA: 4.780.992) and the Blood Center of Ribeirão Preto (CEP/HCRP-FMRP: 50367721.7.1001.5440). The availability of these samples for research purposes during outbreaks of national concern is allowed under the terms of the 510/2016 Resolution of the National Ethical Committee for Research – Brazilian Ministry of Health (CONEP - Comissão Nacional de Ética em Pesquisa, Ministério da Saúde) that authorize, without the necessity of an informed consent, the use of clinical samples collected in the Brazilian Central Public Health Laboratories to accelerate knowledge building and contribute to surveillance and outbreak response. The samples processed in this study were obtained

anonymously from material exceeding the routine diagnosis in Brazilian public health laboratories that belong to the public network within BrMoH.

Genomic surveillance network

As a part of the National Network for Pandemic Alert of SARS-CoV-2, we performed genomic monitoring to rapidly understand the spread of SARS-CoV-2 at the national and cross border levels. This was performed in collaboration with the Central Laboratory of Public Health (LACEN) from the states of Bahia (BA), Mato Grosso (MT), Mato Grosso do Sul (MS), Minas Gerais (MG), as well as Blood Center of Ribeirão Preto, the Fiocruz Paraná (PR), the Butantan Institute from the state of São Paulo (SP) state, the University of São Paulo and the Central Laboratory of Health of Paraguay.

Sample collection and molecular diagnostic assays

Convenience clinical samples from patients with suspected SARS-CoV-2 infection from patients residing in 8 of the 27 Brazilian federal states and from Asunción, Paraguay, and collected between July 2020 and June 2021 were provided for diagnostic and genome sequencing purposes. Viral RNA was extracted from nasopharyngeal swabs using an automated protocol and tested for SARS-CoV-2 by multiplex real-time PCR assays: (i) the Allplex 2019-nCoV Assay (Seegene) targeting the envelope (E), the RNA dependent RNA polymerase (RdRp) and the nucleocapsid (N) genes; (ii) the Charité: SARS-CoV2 (E/RP) assay (Bio-Manguinhos/Fiocruz) targeting the E gene, and (iii) the GeneFinder COVID-19 Plus RealAmp Kit (Osang Healthcare, South Korea) supplied by the BrMoH, Butantan Institute and the Pan-American Health Organization (OPAS).

cDNA synthesis and whole genome sequencing

Samples were selected for sequencing based on the Ct value (≤ 30) and availability of epidemiological metadata, such as date of sample collection, sex, age and municipality of residence. The preparation of SARS-CoV-2 genomic libraries was performed using both the Illumina COVIDSeq test following the manufacturer's instructions and nanopore sequencing using the ARTIC Network primal scheme (ref). The normalized libraries were loaded onto a 300-cycle MiSeq Reagent Kit v2 and run on the Illumina MiSeq instrument (Illumina, San Diego, CA, USA).

Due to regional characteristics and the accessibility of resources of the different Brazilian and Paraguayan laboratories, we also applied field SARS-CoV-2 sequencing using the Oxford Nanopore MinION technology. In this case the SuperScript IV Reverse Transcriptase kit (Invitrogen) was initially used for cDNA synthesis following the manufacturer's instructions. The cDNA generated was subjected to multiplex PCR sequencing using the Q5 High Fidelity Hot-Start DNA Polymerase (New England Biolabs) and a set of specific primers designed by the ARTIC Network for sequencing the complete SARS-CoV-2 genome (version 3)³¹. PCR conditions have been previously reported in ³¹. All experiments were performed in a biosafety level-2 cabinet. Amplicons were purified using 1x AMPure XP Beads (Beckman Coulter) and quantified on a Qubit 3.0 fluorimeter (ThermoFisher Scientific) using Qubit™ dsDNA HS Assay Kit (ThermoFisher Scientific). DNA library preparation was performed using the Ligation Sequencing Kit LSK109(Oxford Nanopore Technologies) and the Native Barcoding Kit (NBD104 and NBD114, Oxford Nanopore Technologies). Sequencing libraries were loaded into

a R9.4 flow cell (Oxford Nanopore Technologies). In each sequencing run, we used negative controls to prevent and check for possible contamination with less than 2% mean coverage.

Generation of consensus sequences from Illumina and nanopore

The genome assembly pipeline for Illumina reads involved: (i) read trimming and filtering using Trimmomatic (Bolger et al. 2014); (ii) minimap2 (Li 2018) for read mapping against the reference strain (Wuhan-hu-1 genome reference - NCBI accession NC_045512.2); (iii) samtools (Danecek et al. 2021) for sorting and indexing; (iv) Pilon (Walker et al. 2014) for improving the indel detection; (v) bwa mem (Li 2013) for remapping against Pilon's generated consensus; (vi) samtools mpileup to generate alignment quality values; (vii) seqtk (Li, 2018) to generate a quasi-final genome version; (viii) bwa mem for a 3rd round of remapping reads against the quasi-final genome; and (ix) samtools depth to assess position depths given the *.bam file from the previous step (nucleotide positions with read depth < 5 are denoted as "N").

Oxford Nanopore sequencing raw files were basecalled using Guppy v3.4.5 and barcode demultiplexing was performed using qcat. Consensus sequences were generated by *de novo* assembling using Genome Detective³² that uses DIAMOND to identify and classify candidate viral reads in broad taxonomic units, using the viral subset of the Swissprot UniRef protein database. Candidate reads were next assigned to candidate reference sequences using NCBI blastn and aligned using AGA (Annotated Genome Aligner) and MAFFT. Final contigs and consensus sequences are then available as FASTA files.

Data quality control and global data set collection

To ensure the quality of the genome sequences generated in this study and to guarantee the highest possible phylogenetic accuracy, only genomes >29,000bp and <1% of ambiguities were considered (n=3866). Multiple sequence alignment was then performed with MAFFT³³ and a preliminary phylogenetic tree was inferred using the maximum likelihood in IQ-TREE2, employing the GTR+I nucleotide substitution model. Prior to further phylogenetic analysis our data set was also assessed for both sequences with low data quality (e.g. with assembling issues, sequencing and alignment errors, data annotation errors and sample contamination) and for molecular clock signal (i.e. temporal structure) using TempEst v1.5.3³⁴. We appended our 3,866 genome sequences newly generated under this project with an extensive reference data set of SARS-CoV-2 sequences sampled globally collected since the start of the outbreak, including n=13,328 near-complete genomes from Brazil and n=102 from Paraguay (sampled up to June 30, 2021). A unique set of external references (n=7,992) were obtained by including all the non-Brazilian and non-Paraguayan sequences from the global and South American NextStrain builds (date of access; June 30, 2021). These global references were further supplemented by the inclusion of a random sample of P.1 and P.2 lineages from around the world. This approach was taken to ensure we capture sufficient global sequence diversity while at the same time enriching our data set with South American sequences with whom Brazil and Paraguay share borders.

Phylogenetic analysis

Sequences were aligned using MAFFT³³ and submitted to IQ-TREE2 for maximum likelihood (ML) phylogenetic analysis³⁵ employing the general time reversible (GTR) model of nucleotide substitution and a proportion of invariable sites (+I) as selected by the ModelFinder application.

Branch support was assessed using the approximate likelihood-ratio test based on the bootstrap and the Shimodaira–Hasegawa-like procedure (SH-aLRT) with 1,000 replicates.

The raw ML tree topology was then used to estimate the number of viral transmission events between various Brazilian regions and the rest of the world. TreeTime³⁶ was used to transform this ML tree topology into a dated tree using a constant mean rate of 8.0×10^{-4} nucleotide substitutions per site per year, after the exclusion of outlier sequences. A migration model was fitted to the resulting time-scaled phylogenetic tree in TreeTime, mapping country and regional locations to tips and internal nodes³⁶. Using the resulting annotated tree topology we were able to count the number of transitions (i.e. virus importations and exportations) within different Brazilian regions and between Brazil and the rest of the world. Importantly, this analysis was not dependent on a monophyletic clustering of SARS-CoV-2 in Brazil. To provide a measure of confidence in the time and source of viral transitions, we performed the discrete ancestral state reconstruction on 10 bootstrap replicate trees.

Lineage classification

We used the dynamic lineage classification as specified in the Phylogenetic Assignment of Named Global Outbreak LINEages (version 3.1.7) (PANGOLIN) protocol³⁷. This was aimed at identifying the most epidemiologically important lineages of SARS-CoV-2 circulating within South America (Brazil and Paraguay). Both VOCs and VUMs were designated based on the World Health Organization framework as of July, 2021.

Phylogeographic reconstruction

VOCs and VUMs that emerged in Brazil and Paraguay (i.e. P.1 and P.2) were identified as monophyletic groups on the time-resolved phylogenetic trees (Fig.2 and Fig. S3). Genome sequences from these lineages were then extracted to infer continuous phylogeography histories using the Markov chain Monte Carlo (MCMC) method in BEAST v1.10.4 (Ref). Due to the huge size of the largest clusters we down-sampled them to <600 taxa per clade to infer phylogeographies within a manageable time frame. Accordingly, we retained the ten earliest sequences from each unique sampling location within Brazil and a random prior over the remaining samples from each location (n=531 for P.1 and n=428 for P.2). Briefly, sequences from the subsampled cluster were aligned using MAFFT and preliminary ML trees were inferred in IQ-TREE2 as described above. Prior to phylogeographic analysis, each lineage was also assessed for molecular clock signal using the root-to-tip regression method available in TempEst v1.5.3³⁴ following the removal of potential outliers that may violate the molecular clock assumption. For SARS-CoV-2, we accept temporal structure when the correlation coefficient is > 0.2. Linear regression of root-to-tip genetic distances against sampling dates indicated that the SARS-CoV-2 sequences from P.1 and P.2 evolved in a relatively clock-like manner ($r^2= 0.5$; coefficient correlation= 0.45 for P.1 and $r^2= 0.5$; coefficient correlation= 0.40 For P.2) (**Fig. S3**), making this approach suitable.

We then modelled the phylogenetic diffusion and spread of these lineages on the Brazilian continent by analysing localized transmission (between Brazilian regions) using a flexible relaxed random walk (RRW) diffusion model³⁸ that accommodates branch-specific variation in rates of dispersal with a Cauchy distribution. For each sequence, latitude and longitude

coordinates were attributed. MCMC analyses were set up in BEAST v1.10.4, running in duplicate for 100 million interactions and sampling every 10,000 steps in the chain. Convergence for each run was assessed in Tracer v1.7.1 (ESS for all relevant model parameters >200). Maximum clade credibility trees for each run were summarized using TreeAnnotator after discarding the initial 10% as burn-in. We used the R package “seraphim”³⁹ to extract and map spatiotemporal information embedded in the posterior trees. Note that a transmission link on the phylogeographic map can denote one or more transmission events depending on the phylogeographic inference.

SARS-CoV-2 time series from Brazil

Data from weekly notified and laboratory confirmed cases of infection by SARS-CoV-2 in Brazil, were supplied by the Brazilian Ministry of Health, as made available by the COVIDA network at <https://github.com/wcota/covid19br>. For convenience, the geographical locations were aggregated by Brazilian macro regions: North, Northeast, Southeast, South, and Midwest.

References

1. Coronavirus Disease (COVID-19) Situation Reports.
<https://www.who.int/emergencies/diseases/novel-coronavirus-2019/situation-reports>.
2. COVID-19 Map. *Johns Hopkins Coronavirus Resource Center*
<https://coronavirus.jhu.edu/map.html>.
3. COVID-19 Situation Reports - PAHO/WHO | Pan American Health Organization.
<https://www.paho.org/en/covid-19-situation-reports>.
4. Evolution and epidemic spread of SARS-CoV-2 in Brazil.
<https://www.science.org/doi/10.1126/science.abd2161>.

5. Full article: The ongoing COVID-19 epidemic in Minas Gerais, Brazil: insights from epidemiological data and SARS-CoV-2 whole genome sequencing.
<https://www.tandfonline.com/doi/full/10.1080/22221751.2020.1803146>.
6. Coronavírus Brasil. <https://covid.saude.gov.br/>.
7. Cota, W. Monitoring the number of COVID-19 cases in Brazil. *Wesley Cota - Physics and Complex Networks* <https://covid19br.wcota.me/en/>.
8. COVID-19 outbreak in Brazil: adherence to national preventive measures and impact on people's lives, an online survey | BMC Public Health | Full Text.
<https://bmcpublikealth.biomedcentral.com/articles/10.1186/s12889-021-10222-z>.
9. Pinto Neto, O. *et al.* Mathematical model of COVID-19 intervention scenarios for São Paulo—Brazil. *Nat Commun* **12**, 418 (2021).
10. Monteiro de Oliveira, M., Fuller, T. L., Brasil, P., Gabaglia, C. R. & Nielsen-Saines, K. Controlling the COVID-19 pandemic in Brazil: a challenge of continental proportions. *Nat Med* **26**, 1505–1506 (2020).
11. Routes for COVID-19 importation in Brazil | Journal of Travel Medicine | Oxford Academic.
<https://academic.oup.com/jtm/article/27/3/taaa042/5809508>.
12. Genomics and epidemiology of the P.1 SARS-CoV-2 lineage in Manaus, Brazil.
<https://www.science.org/doi/10.1126/science.abh2644>.
13. COVID-19 in Amazonas, Brazil, was driven by the persistence of endemic lineages and P.1 emergence | Nature Medicine. <https://www.nature.com/articles/s41591-021-01378-7>.
14. Full article: Emergence of the novel SARS-CoV-2 lineage VUI-NP13L and massive spread of P.2 in South Brazil.
<https://www.tandfonline.com/doi/full/10.1080/22221751.2021.1949948>.

15. Voloch, C. M. *et al.* Genomic characterization of a novel SARS-CoV-2 lineage from Rio de Janeiro, Brazil. *J Virol* JVI.00119-21 (2021) doi:10.1128/JVI.00119-21.
16. de Oliveira Andrade, R. Covid-19 is causing the collapse of Brazil's national health service. *BMJ* **370**, m3032 (2020).
17. Vacinação contra a Covid-19 no Brasil - #PÁTRIAVACINADA.
<https://www.gov.br/saude/pt-br/vacinacao>.
18. Vacinas contra a COVID-19 - OPAS/OMS | Organização Pan-Americana da Saúde.
<https://www.paho.org/pt/vacinas-contracovid-19>.
19. Brazil – COVID19 Vaccine Tracker. <https://covid19.trackvaccines.org/country/brazil/>.
20. Naveca, F. G. *et al.* COVID-19 in Amazonas, Brazil, was driven by the persistence of endemic lineages and P.1 emergence. *Nat Med* **27**, 1230–1238 (2021).
21. Weisblum, Y. *et al.* Escape from neutralizing antibodies by SARS-CoV-2 spike protein variants. *eLife* **9**, e61312 (2020).
22. Nonaka, C. K. V. *et al.* Genomic Evidence of SARS-CoV-2 Reinfection Involving E484K Spike Mutation, Brazil - Volume 27, Number 5—May 2021 - Emerging Infectious Diseases journal - CDC. doi:10.3201/eid2705.210191.
23. CDC. Coronavirus Disease 2019 (COVID-19). *Centers for Disease Control and Prevention* <https://www.cdc.gov/coronavirus/2019-ncov/science/science-briefs/scientific-brief-emerging-variants.html> (2020).
24. Sant'Anna, F. H. *et al.* Emergence of the novel SARS-CoV-2 lineage VUI-NP13L and massive spread of P.2 in South Brazil. *Emerging Microbes & Infections* **10**, 1431–1440 (2021).

25. The effect of human mobility and control measures on the COVID-19 epidemic in China - PubMed. <https://pubmed.ncbi.nlm.nih.gov/32213647/>.
26. PAHO Paraguay COVID-19 Response. <https://paho-covid19-response-who.hub.arcgis.com/pages/paho-paraguay-covid-19-response>.
27. Paraguay: WHO Coronavirus Disease (COVID-19) Dashboard With Vaccination Data. <https://covid19.who.int>.
28. Shu, Y. & McCauley, J. GISAID: Global initiative on sharing all influenza data – from vision to reality. *Euro Surveill* **22**, 30494 (2017).
29. Resende, P. C. *et al.* The ongoing evolution of variants of concern and interest of SARS-CoV-2 in Brazil revealed by convergent indels in the amino (N)-terminal domain of the spike protein. *Virus Evolution* **7**, (2021).
30. Estimating the early impact of vaccination against COVID-19 on deaths among elderly people in Brazil: Analyses of routinely-collected data on vaccine coverage and mortality - PubMed. <https://pubmed.ncbi.nlm.nih.gov/34308302/>.
31. Quick, J. nCoV-2019 sequencing protocol. (2020) doi:10.17504/protocols.io.bbmuik6w.
32. Genome Detective: an automated system for virus identification from high-throughput sequencing data - PubMed. <https://pubmed.ncbi.nlm.nih.gov/30124794/>.
33. MAFFT Multiple Sequence Alignment Software Version 7: Improvements in Performance and Usability | Molecular Biology and Evolution | Oxford Academic. <https://academic.oup.com/mbe/article/30/4/772/1073398>.
34. Rambaut, A., Lam, T. T., Max Carvalho, L. & Pybus, O. G. Exploring the temporal structure of heterochronous sequences using TempEst (formerly Path-O-Gen). *Virus Evol* **2**, vew007 (2016).

35. IQ-TREE 2: New Models and Efficient Methods for Phylogenetic Inference in the Genomic Era | *Molecular Biology and Evolution* | Oxford Academic.
<https://academic.oup.com/mbe/article/37/5/1530/5721363>.
36. Sagulenko, P., Puller, V. & Neher, R. A. TreeTime: Maximum-likelihood phylodynamic analysis. *Virus Evol* **4**, vex042 (2018).
37. A dynamic nomenclature proposal for SARS-CoV-2 lineages to assist genomic epidemiology | *Nature Microbiology*. <https://www.nature.com/articles/s41564-020-0770-5>.
38. Lemey, P., Rambaut, A., Welch, J. J. & Suchard, M. A. Phylogeography takes a relaxed random walk in continuous space and time. *Mol Biol Evol* **27**, 1877–1885 (2010).
39. Dellicour, S., Rose, R., Faria, N. R., Lemey, P. & Pybus, O. G. SERAPHIM: studying environmental rasters and phylogenetically informed movements. *Bioinformatics* **32**, 3204–3206 (2016).

Acknowledgments: We thank all those who have kindly deposited and shared genome data on GISAID (Table S3). The authors acknowledge the technical support of Luciana de Araujo Pimenta, Luiz Aurelio de Campos Crispin, Gabriela Mauric Frossard Ribeiro, Glaucia Maria Rodrigues Borges, Mariane Evaristo e Josiane Serrano Borges from the National Network for Pandemic Alert of SARS-CoV-2 and the contribution of all employees of General Coordination of Public Health Laboratories and professionals of Public Health Laboratories of Brazil and Network for Pandemic Alert of Emerging SARS-CoV-2 Variants for their contribution towards the sequencing effort and for their commitment and work during the fight of the COVID-19 pandemic.

Funding: This study was financed by São Paulo Research Foundation (FAPESP) (Grants Number: 2020/10127-1 and 2020/05367-3, 2013/08135-2), the Central Public Health Laboratories, Blood Center of Ribeirão Preto and supported by the Brazilian Ministry of Health and the Pan American Health Organization PAHO/WHO (APO21-00010098). This work was supported in part through National Institutes of Health USA grant U01 AI151698 for the United World Arbovirus Research Network (UWARN), the CRP- ICGEB RESEARCH GRANT 2020 Project CRP/BRA20-03, Contract CRP/20/03, the Oswaldo Cruz Foundation VPGDI-027-FIO-20-2-2-30, the Brazilian Ministry of Health (SCON2021-00180), the CNPq (426559/2018-5) and the Faperj E-26/202.930/2016. MG and LCJA are supported by Fundação de Amparo à Pesquisa do Estado do Rio de Janeiro (FAPERJ) (E-26/202.248/2018(238504); E26/202.665/2019(247400)). JX is supported by Coordenação de Aperfeiçoamento de Pessoal de Nível Superior (CAPES) - Finance Code 001. JL is supported by a lectureship by the Department of Zoology of the University of Oxford. VF is supported by Coordenação de Aperfeiçoamento de Pessoal de Nível Superior (CAPES) (88882.349290/2019-01) and a Flagship grant from the South African Medical Research Council (MRC-RFA-UFSP-01-2013/UKZN HIVEPI). ECH is funded by an ARC Australian Laureate Fellowship (FL170100022). MLN is supported by FAPESP (Grant 20/04836-0) and partially supported by a NIH grant to CreateNeo (U01AI151807).

Author contributions:

Molecular screening and produced SARS-CoV-2 genomic data: MG, SNS, VLV, ESR, EVS, FA, JX, HF, TERA, LPOL, AJM, CRSB, ECM, JSTB, DBM, RAB, RLRCC, PDSCM, JPK, BS, RPS, VVC, ST, VBN, LROS, MKAG, JQL, AAR, NRG, LTW, LBS, RSF, MPFP, MJO, SGF,

SV, CA, GPMG, WSF, ARMC, JV, SMVLO, CCMG, MCDR, GNB, MPG, NQM, INR, SR, GMC, AHDC, CZ, CDS, PAA, FASC, MDP, JCCL, ECM, CAB, LS, MMM, RMTG, JASN, MLN, HF, LLC, RTC, RMN; Collected samples and curated metadata: CF, CRLP, CFRF, WN, RFCS, MA, CCAM, RH, SCS, MCE, SK, LCJA, DTC, JASN, HF, LLC, FP, AL, FCMI, GCP, CV, GMES, ECO, LD, JC; Analysed the data: MG, VF, EW, HT, JSPL, EJS, RB, JL; Helped with study design and data interpretation: MG, VF, EW, HT, EH, JL, TdO, SCS, MCE, SK, LCJA, DTC; Wrote the initial manuscript, which was reviewed by all authors: MG, SNS, SCS, MCE, SK, LCJA, DTC.

Competing interests: The authors declare no competing interests.

Data and materials availability: All sequences that were generated and used in the present study are listed in table S1-S3 (accessible on the GitHub repository) along with their GISAID sequence IDs, dates of sampling, the originating and submitting laboratories and main authors. All input files (e.g. alignments or XML files), all resulting output files and scripts used in the study are shared publicly on GitHub ([https://github.com/genomicsurveillance/Genomic epidemiology reveals how restriction measures shaped the SARS-CoV-2 epidemic in Brazil](https://github.com/genomicsurveillance/Genomic_epidemiology_reveals_how_restriction_measures_shaped_the_SARS-CoV-2_epidemic_in_Brazil)).

ADDITIONAL INFORMATION

Figure S1. Sequencing statistics and lineage assignment of the SARS-CoV-2 genomes generated in this study. (A) Genome coverage plotted against RT-qPCR cycle threshold value. Colours represent genomes obtained from Brazil (green) and Paraguay (orange) respectively. (B)

Number of genomes obtained in this study from Brazil and Paraguay. Colours represent different lineages.

Figure S2. Fully annotated Brazilian SARS-CoV-2 time tree. Time resolved maximum likelihood tree containing 17,135 high quality Brazilian SARS-CoV-2 near-full-genome sequences (n=3,866 generated in this study) analysed against a backdrop of global reference sequences. Variants of interest (VUM) and concern (VOC) are highlighted on the phylogeny.

Figure S3. Temporal Signal. (A) Root-to-tip regression plots for Brazilian lineages of concern and of interest (P.1 – Gamma and P.2- Zeta).

Figure S4. Sensitivity of the viral introduction analysis to geographic sampling biases. A, B) Sensitivity analysis showing how the proportion of international imports and exports into and from Brazil, from external locations did not varied in the time and source of viral transitions, by performing the discrete ancestral state reconstruction on 10 bootstrap replicate trees. **C-K)** Sensitivity analysis showing how the number of viral exchanges within Brazilian regions by counting the state changes from the root to the tips, did not varied in the time and source of viral transitions, by performing the discrete ancestral state reconstruction on 10 bootstrap replicate trees.

Figure S5. Sensitivity of the Gamma viral introduction analysis to geographic sampling biases. A, B) Sensitivity analysis showing how the proportion of international imports and exports of gamma variant into and from Brazil, from external locations did not varied in the time

and source of viral transitions, by performing the discrete ancestral state reconstruction on 10 bootstrap replicate trees. **C-K)** Sensitivity analysis showing how the number of exchanges of the gamma variant between Brazilian regions, did not varied in the time and source of viral transitions, by performing the discrete ancestral state reconstruction on 10 bootstrap replicate trees.

Figure S6. Sensitivity of the Zeta viral introduction analysis to geographic sampling biases.

A, B Sensitivity analysis showing how the proportion of international imports and exports of zeta variant into and from Brazil, from external locations did not varied in the time and source of viral transitions, by performing the discrete ancestral state reconstruction on 10 bootstrap replicate trees. **C-K)** Sensitivity analysis showing how the number of exchanges of the Zeta variant between Brazilian regions.

Supplementary Table 1. Information on the n=3803 SARS-CoV-2 Brazilian samples sequenced as part of this study.

Supplementary Table 2. Information on the n=63 SARS-CoV-2 from Paraguay samples sequenced as part of this study.

Supplementary Table 3. GISAID acknowledgment table.

FIGURE LEGENDS

Fig. 1. Key events following the first confirmed infection of SARS-CoV-2 in Brazil. (A) Timeline of SARS-CoV-2 key events in Brazil. (B) Epidemic curve showing the progression of

reported daily viral infection numbers in Brazil from the beginning of the epidemic (grey) and deaths (red) in the same period, with restriction phases indicated along the bottom. (C) Map of cumulative SARS-CoV-2 cases per 100,000 inhabitants in Brazil up to June 2021.

Fig. 2. Phylogenetic analysis and SARS-CoV-2 lineage dynamics in Brazil. (A) Map of Brazil with the number of sequences in GISAID as of 30th June 2021. (B) Temporal sampling of sequences in Brazilian states (ordered by total number of sequences) through time with VOCs highlighted and annotated according to their PANGO lineage assignment. (C) Time resolved maximum likelihood phylogeny containing high quality Brazilian near-full-genome sequences (n=3866) obtained from this study, analysed against a backdrop of global reference sequences (n=25,288). Variants under monitoring (VUM) and concern (VOC) are highlighted on the phylogeny. (D) Sources of viral introductions into Brazil characterized as external introductions from the rest of the world. (E) Sources of viral exchanges (imports and exports) in and outside Brazil. (F) Number of viral exchanges within Brazilian regions by counting the state changes from the root to the tips of the phylogeny in panel C.

Fig. 3. Spatiotemporal spread of VOC and VUM in Brazil. (A) Phylogeographic reconstruction of the spread of the Gamma VOC across Brazil using sequences showing strict continuous transmission across geographical regions; (B) Phylogeographic reconstruction of the spread of the Zeta VUM across Brazil using sequences showing strict continuous transmission across geographical regions; (C) Number of exchanges of the Gamma variant between Brazilian regions; (D) Number of exchanges of the Zeta variant between Brazilian regions; (E) Sources of viral export of the VOC and VUM from Brazil to the rest of the world.

Fig. 4. SARS-CoV-2 epidemic in Paraguay. (A) Progressive distribution of the top 20 PANGO lineages in Paraguay over time; (B) Time resolved maximum likelihood tree containing (n=63) high quality SARS-CoV-2 near-whole-genome sequences from Paraguay obtained in this study analysed against a backdrop of global reference sequences. VUM and VOCs are highlighted on the phylogeny. Genome sequences from Paraguay obtained in this study are highlighted with red border.

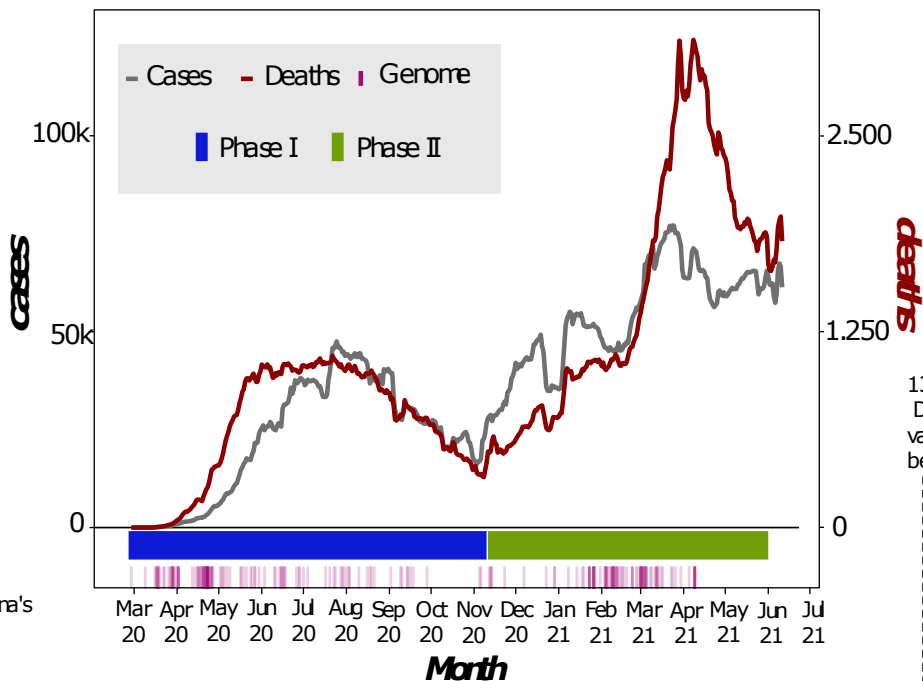
26 Feb
1st confirmed case
in South America,
61 yo male returning
traveller from Italy

10 April
The virus had reached
remote locations;
a Yanomami teen died
of it in Roraima

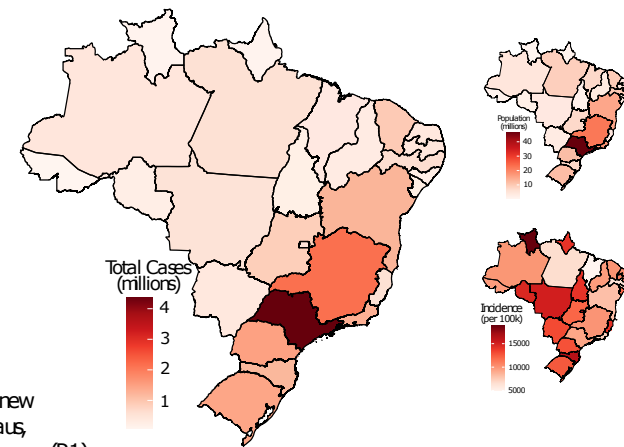
20 April
Several cities started
to ease social isolation
guidelines in favor
of contact trading.

30 April
Brazil overtook China's
official number of
confirmed cases,
surpassing 87,000

B



C



13 January:
Discovery of a new
variant in Manaus,
being called Gamma (P.1)

17 January:
Anvisa has authorized the
emergency use of CoronaVac
and the AstraZeneca vaccines

14 May
Delta (B.1.617.2) Variant is identified
in São Paulo

31 December:
Alpha (B.1.1.7) Variant is identified
in São Paulo

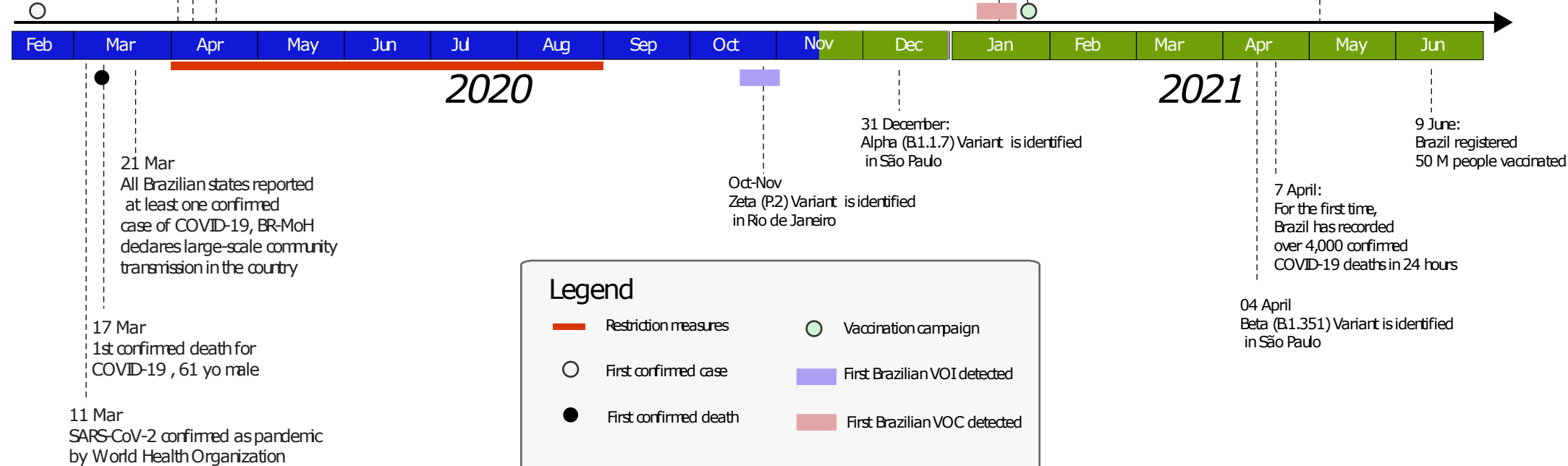
Oct-Nov
Zeta (P.2) Variant is identified
in Rio de Janeiro

7 April:
For the first time,
Brazil has recorded
over 4,000 confirmed
COVID-19 deaths in 24 hours

9 June:
Brazil registered
50 M people vaccinated

04 April
Beta (B.1.351) Variant is identified
in São Paulo

A



21 Mar
All Brazilian states reported
at least one confirmed
case of COVID-19, BR-MoH
declares large-scale community
transmission in the country

17 Mar
1st confirmed death for
COVID-19, 61 yo male

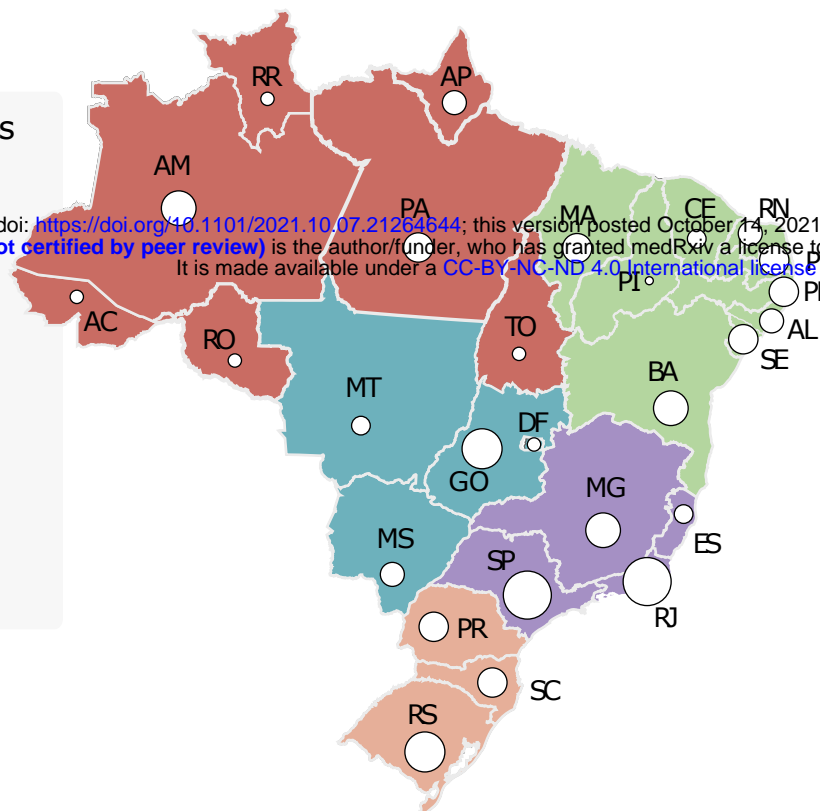
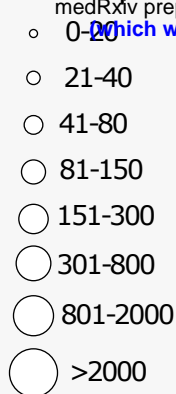
11 Mar
SARS-CoV-2 confirmed as pandemic
by World Health Organization

Legend

- █ Restriction measures
- Vaccination campaign
- First confirmed case
- █ First Brazilian VOI detected
- First confirmed death
- █ First Brazilian VOC detected

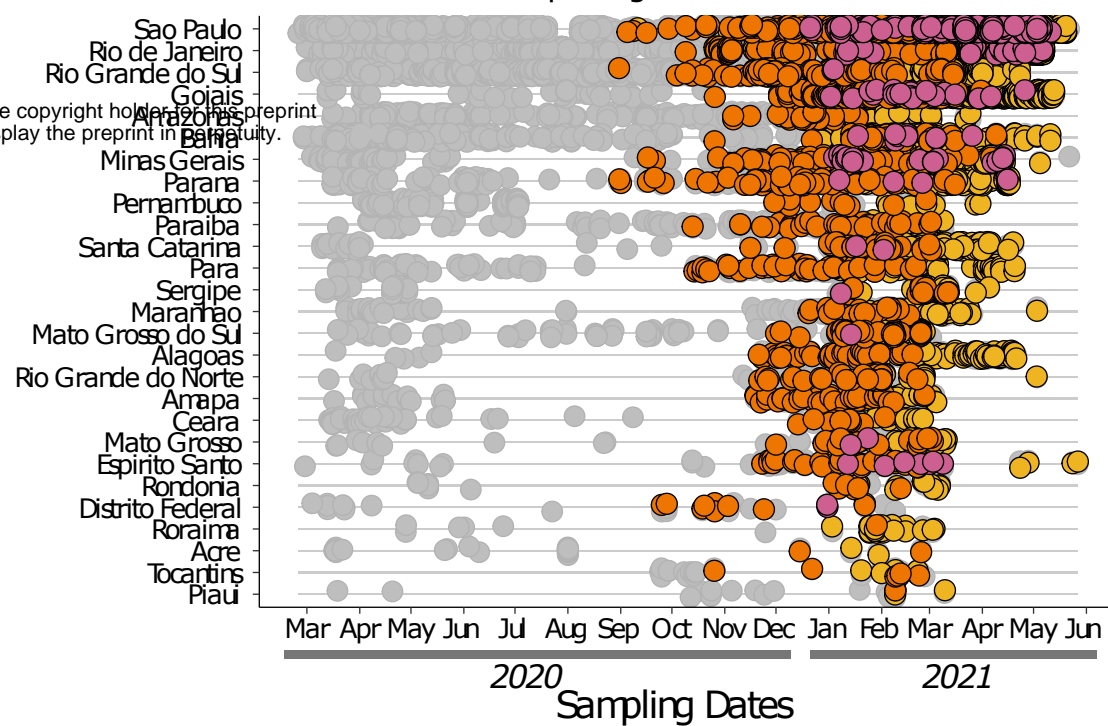
A

SARS-CoV-2 genomes from the Brazilian epidemic

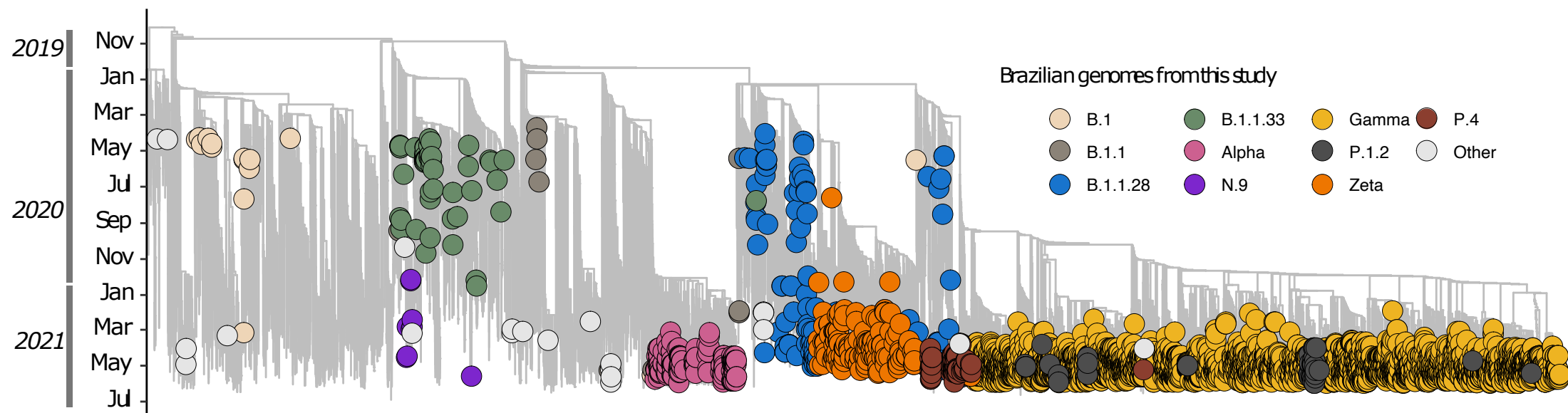


B

VOCs - VOIs Alpha Gamma Zeta Other Lineages
Brazilian states with sequencing data

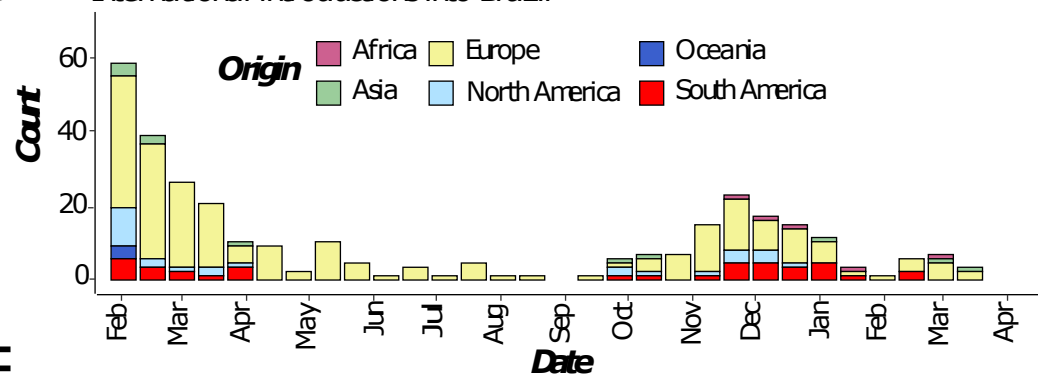


C



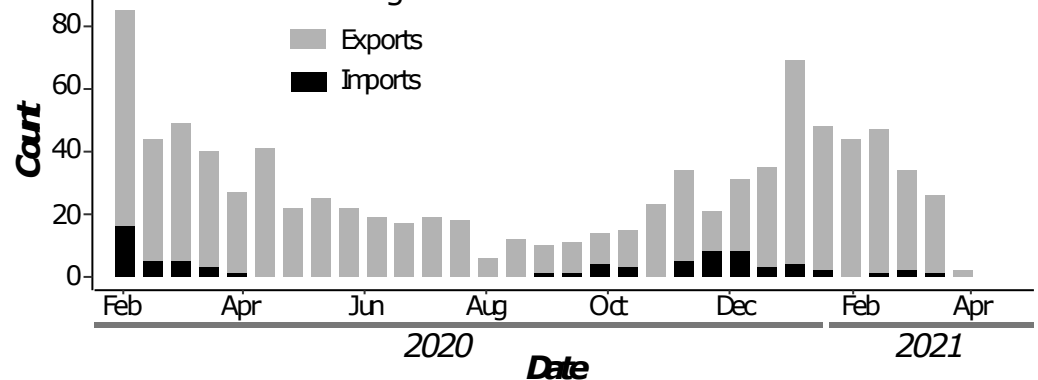
D

International introductions into Brazil



E

Source of viral exchanges



F

