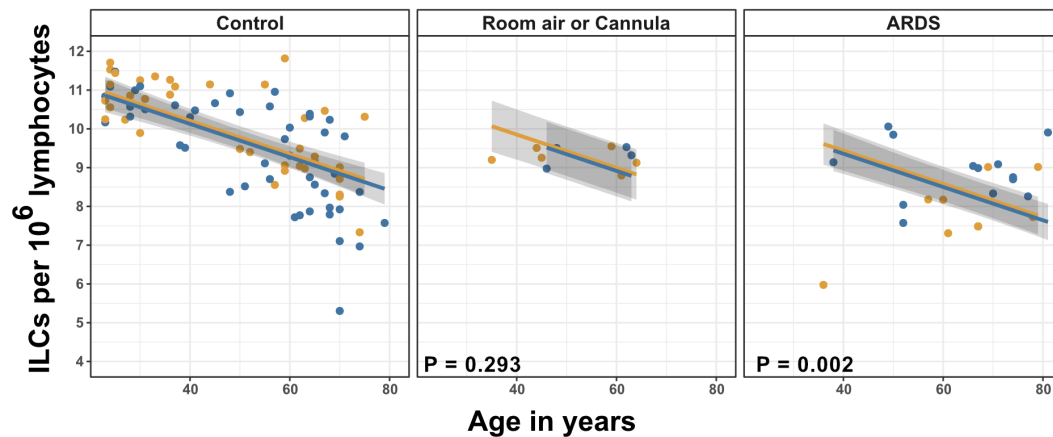


**Fig. S1. Innate lymphoid cell precursors (ILCPs) decrease with age and are depleted in patients hospitalized with COVID-19**

(A) Representative gating for ILCP identification in PBMCs. Cells were first gated on lymphoid cells, singlets, live/dead, and CD45<sup>+</sup>. Lineage (Lin) markers included antibodies against: CD3, CD4, TCRαβ, TCRγδ, CD19, CD20, CD22, CD34, FcεRIα, CD11c, CD303, CD123, CD1a, and CD14.

(B) Effect of age (X-axis) on log<sub>2</sub> ILCP abundance per million total lymphocytes (Y-axis). Each dot represents an individual blood donor, with yellow for female and blue for male. Shading represents the 95%CI. P-values are from the regression analysis for comparisons to the control group.

(C) Lymphoid cell abundance by group, shown as estimated marginal means with 95%CI, generated from the multiple linear regressions in (B), and averaged across age and sex. P-values represent pairwise comparisons on the estimated marginal means, adjusted for multiple comparisons with the Tukey method.

**A****B**

**Group differences in ILC<sup>a</sup> abundance adjusted for age and sex**

Group	Fold difference (log <sub>2</sub> ) [±95%CI]
On room air or nasal cannula	-0.353 [-1.016, 0.309]
ARDS	-0.769** [-1.250, -0.288]

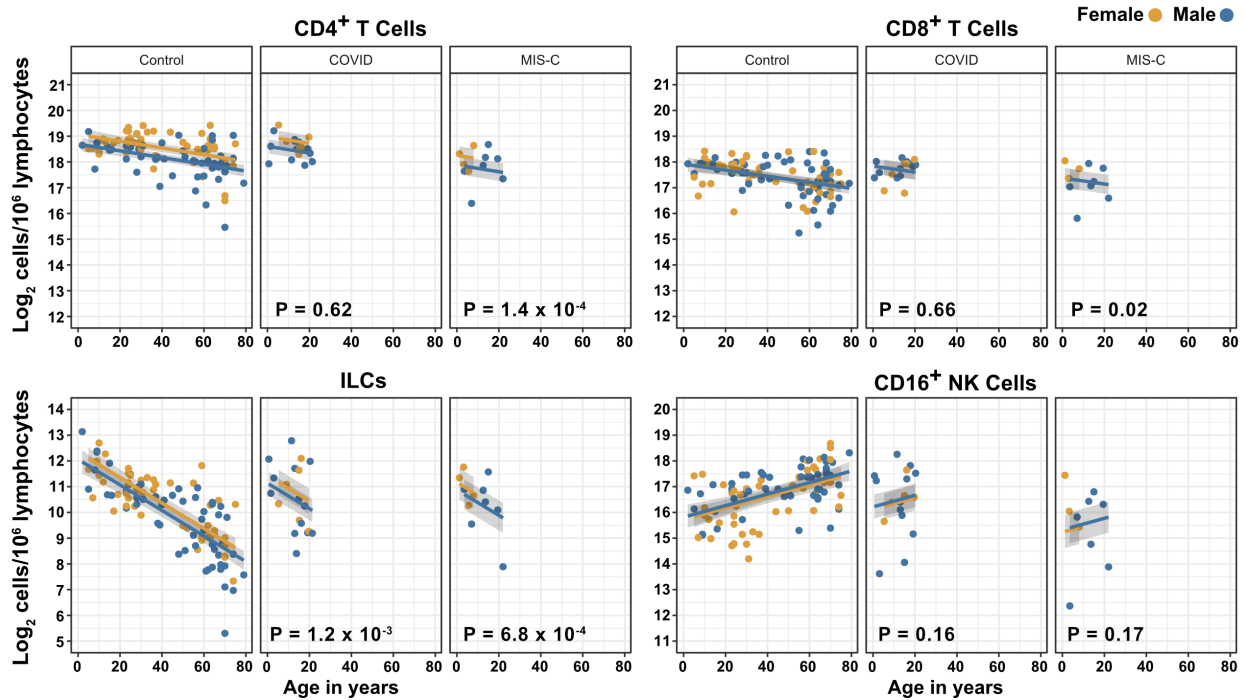
\* p < 0.05, \*\* p < 0.01, \*\*\* p < 0.001

<sup>a</sup>per 10<sup>6</sup> lymphocytes

**Fig. S2. Association of blood ILC depletion with COVID-19 severity in an independent cohort of adults.**

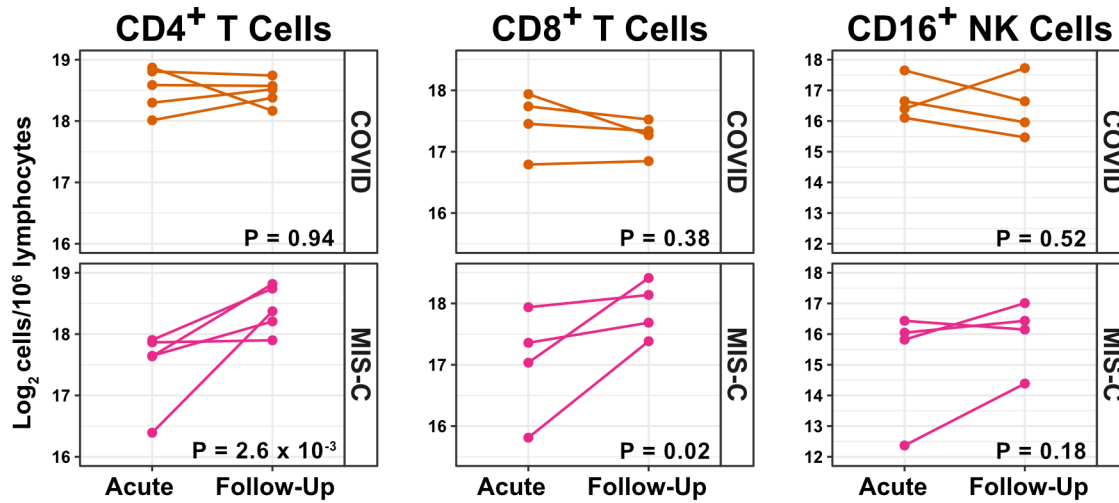
(A) Effect of age (X-axis) on log<sub>2</sub> ILC abundance per million total lymphocytes (Y-axis) in adult controls from this paper and patients with COVID-19 from Kuri-Cervantes et al., 2020. Patients were stratified into two groups by disease severity. The first group included patients maintained on room air or treated with O<sub>2</sub> by nasal cannula. The second group included those with ARDS. Each dot represents an individual blood donor, with yellow for female and blue for male. Shading represents the 95%CI. P-values are from the regression analysis for comparisons to the control group.

(C) Table of regression coefficients for log<sub>2</sub> fold difference in ILC abundance for patients with COVID-19, in comparison to the adult healthy control cohort, adjusted for effects of age and sex.



**Fig. S3. Effects of pediatric COVID-19 and MIS-C on blood lymphoid cell subsets in comparison to full combined adult and pediatric control group**

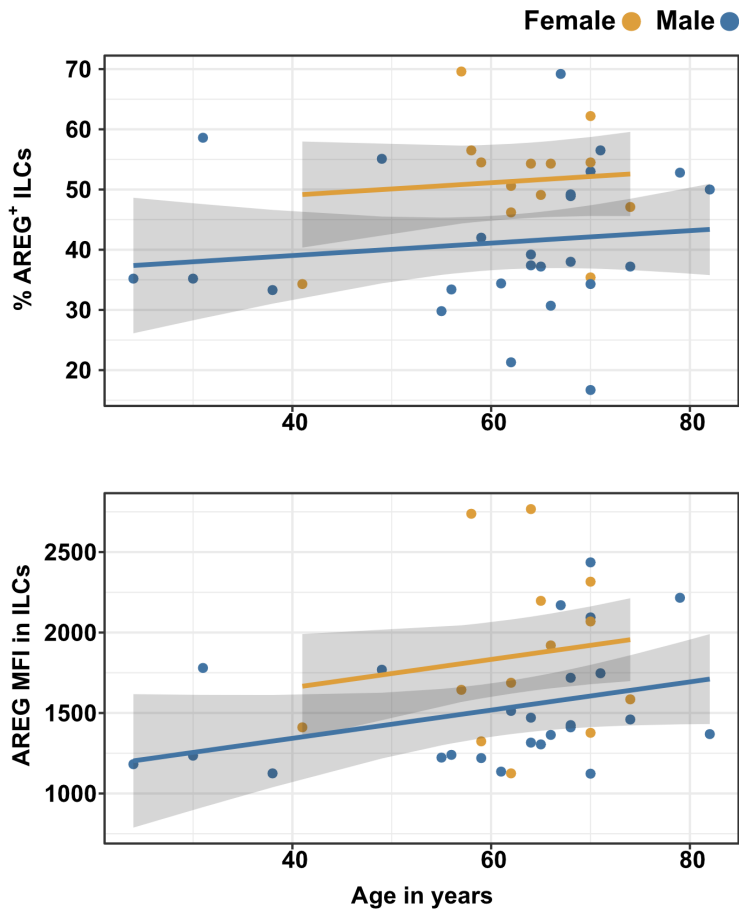
Effect of age (X-axis) on log<sub>2</sub> abundance per million total lymphocytes of the indicated lymphoid cell populations (Y-axis). Each dot represents an individual blood donor, with yellow for female and blue for male. Shading represents the 95%CI. P-values are from the regression analysis for comparisons to the control group.



**Fig. S4. T cells increase during follow-up from MIS-C**

Log<sub>2</sub> ILC abundance per million lymphocytes in longitudinal pairs of samples collected during acute presentation and during follow-up, from individual children with COVID-19 or MIS-C. P-values are for change in ILC abundance at follow-up, as determined with a linear mixed model, adjusting for age, sex, and group, and with patient as a random effect. Differences in sample size among cell types was due to limited sample availability.

**A**



**Fig. S5. Males have lower percent AREG<sup>+</sup> ILCs, and lower AREG MFI in ILCs, than do females, and there is no effect of age on these parameters**

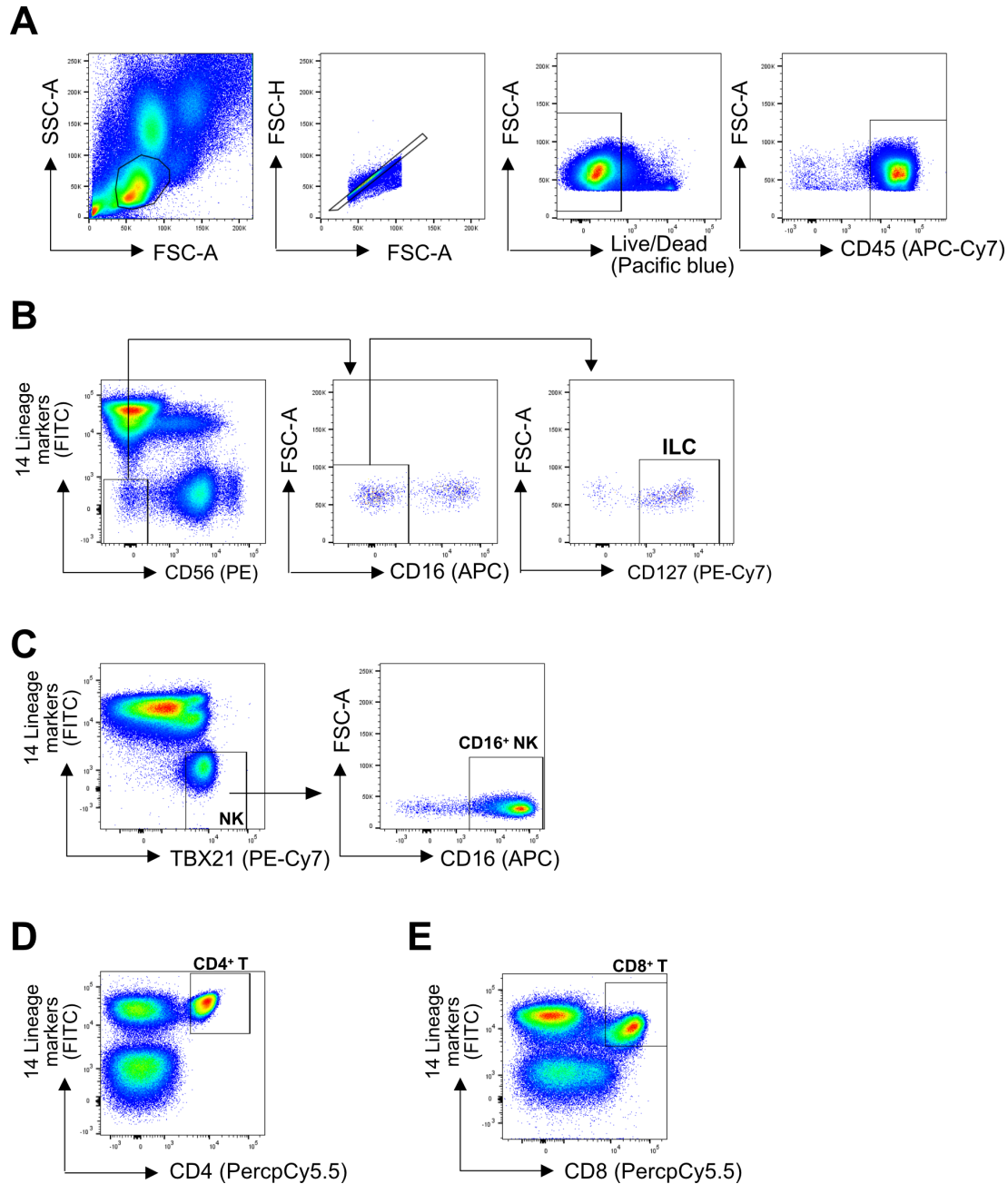
(A) Effect of age (X-axis) on % AREG<sup>+</sup> ILCs or MFI in ILCs (Y-axis as indicated). Each dot represents an individual blood donor, with yellow for female and blue for male. Shading represents the 95%CI.

(B) Table of results for regression analyses plotted in (A)

**B**

Difference [±95%CI]		
	% AREG <sup>+</sup>	MFI in ILCs
Age	0.103	8.764
	[-0.190, 0.397]	[-2.033, 19.561]
Male	-10.030*	-314.816*
	[-18.037, -2.023]	[-609.660, -19.973]
R <sup>2</sup>	0.174	0.189

\* p < 0.05, \*\* p < 0.01, \*\*\* p < 0.001



**Fig. S6. Representative gating strategy**

(A) All cell subsets were first gated on lymphoid cells, singlets, live/dead, and CD45<sup>+</sup>. Lineage (Lin) markers included antibodies against: CD3, CD4, TCRαβ, TCRγδ, CD19, CD20, CD22, CD34, FcεRIα, CD11c, CD303, CD123, CD1a, and CD14.

(B) ILCs were identified as Lin<sup>-</sup>CD56<sup>+</sup>CD16<sup>-</sup>CD127<sup>+</sup>

(C) CD16<sup>+</sup> NK cells were identified as Lin<sup>-</sup>TBX21<sup>+</sup>CD16<sup>+</sup>

(E) CD4<sup>+</sup> T cells were identified as Lin<sup>+</sup>CD4<sup>+</sup> (D), and CD8<sup>+</sup> T cells were identified as Lin<sup>+</sup>CD8<sup>+</sup>

**Table S1: Race and Ethnicity of Adult Cohorts**

Characteristic	Healthy Control N=86	Hospitalized N=40	Outpatient N=51
Race or ethnic group – number (%)			
White	25 (29.1)	17 (42.5)	46 (90.2)
Black or African American	0 (0)	6 (15)	2 (3.9)
Asian	1 (1.2)	1 (2.5)	1 (2)
Unknown or not reported	60 (69.8)	16 (40)	2 (3.9)
Hispanic or latinx	1 (1.2)	11 (27.5)	3 (5.9)

Percentages may not equal 100 because of rounding

**Table S2: Demographic and Clinical Characteristics of Pediatric Blood Donor Groups**

<b>Characteristic</b>	<b>Control N=17</b>	<b>COVID-19 N=19</b>	<b>COVID follow-up N=14</b>	<b>MIS-C N=11</b>	<b>MISC-C follow-up N=7</b>
Mean age (range) - years	10.6 (2-19)	13 (0.7-21.4)	13.8 (1-22)	10.1 (1.2-22)	6.3 (2.2-13.1)
Sex – number (%)					
Male	8 (47.1)	13 (68.4)	7 (50)	7 (63.6)	5 (71.4)
Female	9 (52.9)	6 (31.6)	7 (50)	4 (36.4)	2 (28.6)
Hospital admission for COVID-19 – number (%)		11 (57.9)	4 (28.6)	0	0
Hospital admission for MIS-C – number (%)				11 (100)	7 (100)
Intubation with mechanical ventilation or ECMO – number (%)		1 (5.3)	0	1 (9.1)	1 (14.3)
Deaths – number (%)		0	0	0	0
Mean time hospitalized (range) – days		8 (2-17)		7.5 (1-16)	
Max lab value – mean (range)					
CRP – mg/L		119 (0.2-385)		161 (9-300)	



**Table S3: Change in Lymphocyte Abundance Due to Age, Sex, and COVID-19 Severity in Adult cohorts**

Fold difference (log2) [ $\pm$ 95%CI]

<b>Lymphocytes<sup>a</sup></b>	
Age	-0.008*** [-0.012, -0.004]
Male	-0.267*** [-0.400, -0.135]
Hospitalized	-0.411*** [-0.572, -0.250]
Outpatient	0.129 [-0.030, 0.289]
R <sup>2</sup>	0.416

\* p < 0.05, \*\* p < 0.01, \*\*\* p < 0.001

<sup>a</sup>per 10<sup>6</sup> PBMCs

**Table S4: Change in Cell Abundance Due to Age, Sex, and COVID-19 Severity**

Fold difference (log2) [ $\pm$ 95%CI]				
	CD4 <sup>+</sup> T <sup>a</sup>	ILC <sup>a</sup>	CD8 <sup>+</sup> T <sup>a</sup>	CD16 <sup>+</sup> NK <sup>a</sup>
Age	-0.020*** [-0.029, -0.010]	-0.051*** [-0.063, -0.040]	-0.017*** [-0.025, -0.008]	0.014* [0.002, 0.026]
Male	-0.678*** [-0.980, -0.375]	-0.609** [-0.983, -0.235]	-0.411** [-0.688, -0.134]	-0.049 [-0.435, 0.336]
Hospitalized	-0.241 [-0.608, 0.126]	-1.280*** [-1.734, -0.826]	-0.034 [-0.369, 0.301]	-1.466*** [-1.932, -0.999]
Outpatient	0.461* [0.099, 0.824]	0.009 [-0.441, 0.458]	0.224 [-0.110, 0.558]	-0.276 [-0.741, 0.189]
R <sup>2</sup>	0.364	0.552	0.224	0.194

\* p < 0.05, \*\* p < 0.01, \*\*\* p < 0.001

<sup>a</sup>per 10<sup>6</sup> PBMCs

**Table S5: Odds of Hospitalization in Pediatric Cohort<sup>a</sup>**

<b>Cell count<sup>b</sup></b>	<b>Odds Ratio<sup>c</sup></b>	<b>95% Confidence Interval</b>	<b>P-Value</b>
<b>CD4<sup>+</sup> T</b>	1.75	0.0593 – 43.3	0.724
<b>ILC</b>	0.712	0.26– 1.73	0.463
<b>CD8<sup>+</sup> T</b>	0.217	0.00509 – 5.9	0.366
<b>CD16<sup>+</sup> NK</b>	0.386	0.0554 – 1.23	0.194

<sup>a</sup>Adjusted for age and sex

<sup>b</sup>per 10<sup>6</sup> lymphocytes

<sup>c</sup>per 2-fold increase in cell population abundance

**Table S6: Change in Pediatric Cohort Cell Abundance due to Group; Adjusted for Effects of Age and Sex with Combined Pediatric and Adult Control Data**

Fold difference (log2) [ $\pm$ 95%CI]

	<b>CD4<sup>+</sup> T<sup>a</sup></b>	<b>ILC<sup>a</sup></b>	<b>CD8<sup>+</sup> T<sup>a</sup></b>	<b>CD16<sup>+</sup> NK<sup>a</sup></b>
COVID	-0.085	-0.924**	-0.078	0.400
	[-0.421, 0.251]	[-1.474, -0.373]	[-0.424, 0.269]	[-0.161, 0.961]
MIS-C	-0.814***	-1.183***	-0.538*	-0.493
	[-1.224, -0.404]	[-1.856, -0.511]	[-0.969, -0.106]	[-1.190, 0.205]
R <sup>2</sup>	0.292	0.541	0.165	0.261

\* p < 0.05, \*\* p < 0.01, \*\*\* p < 0.001

<sup>a</sup>per 10<sup>6</sup> lymphocytes

**Table S7: Gene ontology analysis results**

ID	Description	GeneRatio	BgRatio	pvalue	p.adjust	qvalue	geneID	Count
GO:0032616	interleukin-13 production	7/294	17/9263	4.47E-07	0.00112026	0.00100638	IL17RA/NLRP3/IL18/TNFSF4/ARG2/GATA3/RARA	7
GO:0042092	type 2 immune response	8/294	25/9263	6.33E-07	0.00112026	0.00100638	NLRP3/CD81/IL18/BCL3/TNFSF4/ARG2/GATA3/RARA	8
GO:0002711	positive regulation of T cell mediated immunity	9/294	36/9263	1.28E-06	0.00122325	0.0010989	NLRP3/CD81/IL18/HLA-B/IL23R/HSPD1/TNFSF4/HLA-A/GATA3	9
GO:0045064	T-helper 2 cell differentiation	6/294	13/9263	1.38E-06	0.00122325	0.0010989	NLRP3/IL18/BCL3/TNFSF4/GATA3/RARA	6
GO:0002830	positive regulation of type 2 immune response	6/294	14/9263	2.35E-06	0.00123526	0.00110969	NLRP3/CD81/IL18/TNFSF4/GATA3/RARA	6
GO:0002828	regulation of type 2 immune response	7/294	21/9263	2.40E-06	0.00123526	0.00110969	NLRP3/CD81/IL18/TNFSF4/ARG2/GATA3/RARA	7
GO:0002709	regulation of T cell mediated immunity	10/294	49/9263	2.44E-06	0.00123526	0.00110969	NLRP3/CD81/IL18/HLA-B/IL23R/HSPD1/TNFSF4/HLA-A/GATA3/WAS	10
GO:0032656	regulation of interleukin-13 production	6/294	15/9263	3.82E-06	0.00169036	0.00151854	IL17RA/NLRP3/TNFSF4/ARG2/GATA3/RARA	6
GO:0002708	positive regulation of lymphocyte mediated immunity	12/294	79/9263	6.38E-06	0.00212609	0.00190997	NLRP3/CD81/IL18/HLA-B/CD28/LAMP1/IL23R/HSPD1/TNFSF4/HLA-A/GATA3/EXOSC6	12
GO:0002706	regulation of lymphocyte mediated immunity	14/294	107/9263	6.60E-06	0.00212609	0.00190997	NLRP3/CD81/IL18/HLA-B/CD28/LAMP1/IL23R/HSPD1/TNFSF4/HLA-A/ARRB2/GATA3/EXOSC6/WAS	14
GO:0046631	alpha-beta T cell activation	14/294	107/9263	6.60E-06	0.00212609	0.00190997	RASAL3/FOXP1/NLRP3/CD81/IL18/RC3H1/CD28/BCL3/IL23R/TCF7/TNFSF4/ARG2/GATA3/RARA	14
GO:0035710	CD4-positive, alpha-beta T cell activation	11/294	69/9263	9.66E-06	0.00274122	0.00246257	FOXP1/NLRP3/CD81/IL18/RC3H1/BCL3/IL23R/TNFSF4/ARG2/GATA3/RARA	11

GO:0051251	positive regulation of lymphocyte activation	20/294	209/9263	1.02E-05	0.00274122	0.00246257	CD6/RASAL3/NLRP3/GRAP2/CD81/IL18/CD28/FLT3LG/CD5/LAMP1/IL23R/HSPD1/TNFSF4/RAC1/CDC42/ADAM8/CSK/GATA3/RARA/EXOSC6	20
GO:0050870	positive regulation of T cell activation	17/294	159/9263	1.11E-05	0.00274122	0.00246257	CD6/RASAL3/NLRP3/GRAP2/CD81/IL18/CD28/CD5/IL23R/HSPD1/TNFSF4/RAC1/CDC42/ADAM8/CSK/GATA3/RARA	17
GO:0032736	positive regulation of interleukin-13 production	5/294	23316	1.23E-05	0.00274122	0.00246257	IL17RA/NLRP3/TNFSF4/GATA3/RARA	5
GO:0042093	T-helper cell differentiation	9/294	47/9263	1.36E-05	0.00274122	0.00246257	FOXP1/NLRP3/IL18/RC3H1/BCL3/IL23R/TNFSF4/GATA3/RARA	9
GO:2000514	regulation of CD4-positive, alpha-beta T cell activation	9/294	47/9263	1.36E-05	0.00274122	0.00246257	NLRP3/CD81/IL18/RC3H1/IL23R/TNFSF4/ARG2/GATA3/RARA	9
GO:0050863	regulation of T cell activation	21/294	232/9263	1.44E-05	0.00274122	0.00246257	CD6/RASAL3/CASP3/NLRP3/GRAP2/CD81/IL18/RC3H1/CD28/CD5/IL23R/HSPD1/LAT/TNFSF4/RAC1/ARG2/CDC42/ADAM8/CSK/GATA3/RARA	21
GO:0046634	regulation of alpha-beta T cell activation	11/294	72/9263	1.47E-05	0.00274122	0.00246257	RASAL3/NLRP3/CD81/IL18/RC3H1/CD28/IL23R/TNFSF4/ARG2/GATA3/RARA	11
GO:0046649	lymphocyte activation	34/294	498/9263	1.83E-05	0.00302412	0.00271671	CD6/RASAL3/FOXP1/CASP3/NLRP3/GRAP2/CD81/IL18/RC3H1/IRF2BP2/CD28/FLT3LG/CD5/HDAC9/LAMP1/BCL3/PLCG2/IL23R/AKAP17A/TCF7/HSPD1/LAT/TNFSF4/RAC1/ARG2/ZBTB7A/CDC42/ADAM8/CSK/GATA3/RARA/EXOSC6/STK11/WAS	34
GO:0002824	positive regulation of	11/294	74/9263	1.92E-05	0.00302412	0.00271671	NLRP3/CD81/IL18/HLA-	11

	adaptive immune response based on somatic recombination of immune receptors built from immunoglobulin superfamily domains						B/CD28/IL23R/HS PD1/TNFSF4/HLA - A/GATA3/EXOSC 6	
GO:0002294	CD4-positive, alpha-beta T cell differentiation involved in immune response	9/294	49/9263	1.94E-05	0.00302412	0.00271671	FOXP1/NLRP3/IL18/RC3H1/BCL3/IL23R/TNFSF4/GATA3/RARA	9
GO:002822	regulation of adaptive immune response based on somatic recombination of immune receptors built from immunoglobulin superfamily domains	13/294	103/9263	2.10E-05	0.00302412	0.00271671	NLRP3/CD81/IL18/RC3H1/HLA-B/CD28/IL23R/HS PD1/TNFSF4/HLA - A/GATA3/EXOSC 6/WAS	13
GO:0022407	regulation of cell-cell adhesion	23/294	276/9263	2.16E-05	0.00302412	0.00271671	CD6/RASAL3/CASP3/NLRP3/GRAP2/CD81/IL18/RC3H1/CD28/CD5/TNR/IL23R/ADAM19/HSPD1/TNFSF4/RAC1/ARG2/CD42/ADAM8/CSK/GATA3/RGCC/RARA	23
GO:0022409	positive regulation of cell-cell adhesion	18/294	185/9263	2.27E-05	0.00302412	0.00271671	CD6/RASAL3/NLRP3/GRAP2/CD81/IL18/CD28/CD5/IL23R/ADAM19/HSPD1/TNFSF4/RAC1/CDC42/ADAM8/CSK/GATA3/RARA	18
GO:002287	alpha-beta T cell activation involved in immune response	9/294	50/9263	2.31E-05	0.00302412	0.00271671	FOXP1/NLRP3/IL18/RC3H1/BCL3/IL23R/TNFSF4/GATA3/RARA	9
GO:002293	alpha-beta T cell differentiation	9/294	50/9263	2.31E-05	0.00302412	0.00271671	FOXP1/NLRP3/IL18/RC3H1/BCL3/IL	9

	n involved in immune response						L23R/TNFSF4/GATA3/RARA	
GO:0002285	lymphocyte activation involved in immune response	15/294	136/9263	2.54E-05	0.00321286	0.00288626	FOXP1/NLRP3/CD81/IL18/RC3H1/CD28/LAMP1/BCL3/PLCG2/IL23R/HSPD1/TNFSF4/GATA3/RARA/EXOSC6	15
GO:1903039	positive regulation of leukocyte cell-cell adhesion	17/294	171/9263	2.90E-05	0.00354228	0.0031822	CD6/RASAL3/NLRP3/GRAP2/CD81/IL18/CD28/CD5/IL23R/HSPD1/TNFSF4/RAC1/CDC42/ADAM8/CSK/GATA3/RARA	17
GO:1903037	regulation of leukocyte cell-cell adhesion	20/294	225/9263	3.01E-05	0.00354723	0.00318665	CD6/RASAL3/CASP3/NLRP3/GRAP2/CD81/IL18/RC3H1/CD28/CD5/IL23R/HSPD1/TNFSF4/RAC1/ARG2/CDC42/ADAM8/CSK/GATA3/RARA	20
GO:0042110	T cell activation	26/294	344/9263	3.46E-05	0.00384309	0.00345243	CD6/RASAL3/FOXP1/CASP3/NLRP3/GRAP2/CD81/IL18/RC3H1/CD28/CD5/BCL3/IL23R/TCF7/HSPD1/LAT/TNFSF4/RAC1/ARG2/CDC42/ADAM8/CSK/GATA3/RARA/STK11/WAS	26
GO:0045785	positive regulation of cell adhesion	22/294	265/9263	3.47E-05	0.00384309	0.00345243	CD6/RASAL3/NLRP3/GRAP2/CD81/IL18/DOCK5/CD28/CD5/SPOCK2/IL23R/ADAM19/HSPD1/RSU1/TNFSF4/RAC1/CDC42/ADAM8/CSK/GATA3/RARA/ITGB1BP1	22
GO:0002821	positive regulation of adaptive immune response	11/294	79/9263	3.61E-05	0.00387396	0.00348017	NLRP3/CD81/IL18/HLA-B/CD28/IL23R/HSPD1/TNFSF4/HLA-A/GATA3/EXOSC6	11
GO:0046640	regulation of alpha-beta T cell proliferation	6/294	22/9263	4.72E-05	0.00482039	0.00433039	RASAL3/CD81/IL18/CD28/TNFSF4/ARG2	6
GO:0051249	regulation of lymphocyte activation	24/294	310/9263	4.76E-05	0.00482039	0.00433039	CD6/RASAL3/CASP3/NLRP3/GRAP2/CD81/IL18/RC3H1/CD28/FLT3LG/CD5/LAMP1/IL	24



							23R/HSPD1/LAT/TNFSF4/RAC1/ARG2/CDC42/ADAM8/CSK/GATA3/RARA/EXOSC6	
GO:0002696	positive regulation of leukocyte activation	20/294	235/9263	5.59E-05	0.00549879	0.00493983	CD6/RASAL3/NLRP3/GRAP2/CD81/IL18/CD28/FLT3LG/CD5/LAMP1/IL23R/HSPD1/TNFSF4/RAC1/CDC42/ADAM8/CSK/GATA3/RARA/EXOSC6	20
GO:0002292	T cell differentiation involved in immune response	9/294	56/9263	5.90E-05	0.00564657	0.00507259	FOXP1/NLRP3/IL18/RC3H1/BCL3/IL23R/TNFSF4/GATA3/RARA	9
GO:0043367	CD4-positive, alpha-beta T cell differentiation	9/294	57/9263	6.81E-05	0.00634978	0.00570432	FOXP1/NLRP3/IL18/RC3H1/BCL3/IL23R/TNFSF4/GATA3/RARA	9
GO:0050865	regulation of cell activation	27/294	381/9263	7.46E-05	0.00677255	0.00608411	CD6/RASAL3/CASP3/NLRP3/GRAP2/CD81/IL18/RC3H1/CD28/FLT3LG/CD5/LAMP1/LMO4/IL23R/HSPD1/TSPAN32/LAT/TNFSF4/RAC1/ARG2/CDC42/ADAM8/CSK/GATA3/RARA/EXOSC6/TCEC	27
GO:0001817	regulation of cytokine production	31/294	468/9263	7.76E-05	0.00686707	0.00616902	PCBP2/HSF1/CD6/FOXP1/HSPA1B/IL17RA/NLRP3/CD81/IL18/IRAK3/DDX3X/LTB/CD28/HDAC9/HSPA1A/BCL3/TXK/PLCG2/IFNGR1/IL23R/HSPD1/TMSB4X/TNFSF4/RAC1/ARG2/ADAM8/CSK/ARRB2/GATA3/RGCC/RARA	31
GO:0050867	positive regulation of cell activation	20/294	241/9263	7.96E-05	0.00687411	0.00617535	CD6/RASAL3/NLRP3/GRAP2/CD81/IL18/CD28/FLT3LG/CD5/LAMP1/IL23R/HSPD1/TNFSF4/RAC1/CDC42/ADAM8/CSK/GATA3/RARA/EXOSC6	20
GO:0031295	T cell costimulation	8/294	46/9263	8.54E-05	0.00701177	0.00629902	GRAP2/CD81/CD28/CD5/TNFSF4/	8

							RAC1/CDC42/CSK	
GO:0030155	regulation of cell adhesion	29/294	427/9263	8.60E-05	0.00701177	0.00629902	CD6/RASAL3/CASP3/CD164/NLRP3/GRAP2/CD81/IL18/RC3H1/DOCK5/CD28/CD5/SPOCK2/TNR/IL23R/ADAM19/HSPD1/RSU1/TNFSF4/RAC1/ARG2/CDC42/ADAM8/CSK/ARHGDI/GATA3/RGCC/RARA/ITGB1BP1	29
GO:0002705	positive regulation of leukocyte mediated immunity	12/294	102/9263	8.78E-05	0.00701177	0.00629902	NLRP3/CD81/IL18/HLA-B/CD28/LAMP1/IL23R/HSPD1/TNFSF4/HLA-A/GATA3/EXOSC6	12
GO:0002819	regulation of adaptive immune response	13/294	118/9263	8.91E-05	0.00701177	0.00629902	NLRP3/CD81/IL18/RC3H1/HLA-B/CD28/IL23R/HSPD1/TNFSF4/HLA-A/GATA3/EXOSC6/WAS	13
GO:00031294	lymphocyte costimulation	8/294	47/9263	0.00010016	0.00771021	0.00692646	GRAP2/CD81/CD28/CD5/TNFSF4/RAC1/CDC42/CSK	8
GO:00046633	alpha-beta T cell proliferation	6/294	25/9263	0.00010332	0.00778396	0.00699271	RASAL3/CD81/IL18/CD28/TNFSF4/ARG2	6
GO:0007159	leukocyte cell-cell adhesion	20/294	247/9263	0.00011181	0.0082481	0.00740967	CD6/RASAL3/CASP3/NLRP3/GRAP2/CD81/IL18/RC3H1/CD28/CD5/IL23R/HSPD1/TNFSF4/RAC1/ARG2/CDC42/ADAM8/CSK/GATA3/RARA	20
GO:00045622	regulation of T-helper cell differentiation	6/294	26/9263	0.00013077	0.00922661	0.00828871	NLRP3/IL18/RC3H1/IL23R/TNFSF4/RARA	6
GO:0002286	T cell activation involved in immune response	10/294	76/9263	0.00013302	0.00922661	0.00828871	FOXP1/NLRP3/CD81/IL18/RC3H1/BCL3/IL23R/TNFSF4/GATA3/RARA	10
GO:00043370	regulation of CD4-positive, alpha-beta T cell differentiation	7/294	37/9263	0.00013713	0.00922661	0.00828871	NLRP3/IL18/RC3H1/IL23R/TNFSF4/GATA3/RARA	7
GO:0002726	positive regulation of	5/294	17/9263	0.00014071	0.00922661	0.00828871	NLRP3/CD81/IL18/TNFSF4/GATA3	5

	T cell cytokine production							
GO:0045624	positive regulation of T-helper cell differentiation	5/294	17/9263	0.00014071	0.00922661	0.00828871	NLRP3/IL18/IL23R/TNFSF4/RARA	5
GO:0046641	positive regulation of alpha-beta T cell proliferation	5/294	17/9263	0.00014071	0.00922661	0.00828871	RASAL3/CD81/IL18/CD28/TNFSF4	5
GO:0097190	apoptotic signaling pathway	29/294	440/9263	0.00014545	0.00936448	0.00841257	YWHAZ/TRADD/BCL2L12/CASP3/HSPA1B/GNAI2/XPA/HINT1/DDX3X/MPV17L/MAL/TNFSF12/CD28/RRM2B/CD5/CHCHD10/LAMP1/HSPA1A/SLC9A3R1/BCL3/TMC8/YWHAB/SKIL/ARRB2/JUN/PPP3CC/STK11/CDKN2D/IFI6	29
GO:0002456	T cell mediated immunity	10/294	77/9263	0.00014866	0.00939995	0.00844443	NLRP3/CD81/IL18/HLA-B/IL23R/HSPD1/TNFSF4/HLA-A/GATA3/WAS	10
GO:0046635	positive regulation of alpha-beta T cell activation	8/294	50/9263	0.00015745	0.00978149	0.00878719	RASAL3/NLRP3/CD81/IL18/CD28/IL23R/TNFSF4/RARA	8
GO:0032754	positive regulation of interleukin-5 production	4/294	10/9263	0.00017948	0.01077211	0.00967711	IL17RA/NLRP3/GATA3/RARA	4
GO:0045628	regulation of T-helper 2 cell differentiation	4/294	10/9263	0.00017948	0.01077211	0.00967711	NLRP3/IL18/TNFSF4/RARA	4
GO:0032753	positive regulation of interleukin-4 production	5/294	18/9263	0.0001898	0.01120117	0.01006255	NLRP3/CD28/TNFSF4/GATA3/RARA	5
GO:0002694	regulation of leukocyte activation	25/294	361/9263	0.00019874	0.01153673	0.01036401	CD6/RASAL3/CASP3/NLRP3/GRAP2/CD81/IL18/RC3H1/CD28/FLT3LG/CD5/LAMP1/IL23R/HSPD1/TSPAN32/LAT/TNFSF4/RAC1/ARG2/CD42/ADAM8/CSK/GATA3/RARA/EXOSC6	25
GO:0046632	alpha-beta T cell	10/294	80/9263	0.00020518	0.01161193	0.01043156	FOXP1/NLRP3/IL18/RC3H1/BCL3/I	10

	differentiation						L23R/TCF7/TNFSF4/GATA3/RARA	
GO:0002250	adaptive immune response	22/294	299/9263	0.0002066	0.01161193	0.01043156	CD6/NLRP3/CD81/IL18/RC3H1/LIME1/HLA-B/TAP2/CD28/BCL3/TXK/IL23R/HS PD1/LAT/TNFSF4/ARG2/CSK/HLA-A/GATA3/EXOSC6/TEC/WAS	22
GO:0001818	negative regulation of cytokine production	16/294	182/9263	0.00021414	0.01184782	0.01064347	PCBP2/HSF1/NLRP3/IRAK3/HDAC9/BCL3/IL23R/TMSB4X/TNFSF4/RAC1/ARG2/CSK/ARRB2/GATA3/RGCC/RARA	16
GO:2000516	positive regulation of CD4-positive, alpha-beta T cell activation	6/294	29/9263	0.00024901	0.01348373	0.01211309	NLRP3/CD81/IL18/IL23R/TNFSF4/RARA	6
GO:00098609	cell-cell adhesion	27/294	410/9263	0.00025132	0.01348373	0.01211309	CD6/RASAL3/CASP3/CD164/NLRP3/GRAP2/CD81/IL18/RC3H1/CD28/CD5/TNR/IL23R/ADAM19/HSPD1/TSPAN32/PCDH9/TNFSF4/RAC1/ARG2/CDC42/ADAM8/CSK/GATA3/RGCC/RARA/BLCO1S4	27
GO:1903311	regulation of mRNA metabolic process	20/294	266/9263	0.00030239	0.01598128	0.01435676	YWHAZ/HSF1/NU P98/HNRNPA0/RC3H1/YBX1/ELAVL1/HSPA1A/SFSWAP/SNRNP70/RBM17/SF3B4/ANP32A/U2AF2/CPSF7/YWHAB/KHSRP/ZBTB7A/PTBP1/EXOSC6	20
GO:0007264	small GTPase mediated signal transduction	24/294	350/9263	0.00030894	0.01608776	0.01445242	TNK2/RASAL3/GRAP2/SH3BP1/MAPKAP1/ABCA1/DOCK5/CFL1/SPRY1/STMN3/PSD4/DNMT1/GDI1/RAB11B/RAB2A/LAT/PLEKHG3/RAC1/TAGAP/CDC42/ARHGEF18/ARHGDI/JUN/WAS	24
GO:00045197	establishment or maintenance of epithelial	5/294	20/9263	0.00032597	0.01659748	0.01491032	ANK1/SH3BP1/SLC9A3R1/MARK2/CDC42	5

	cell apical/basal polarity							
GO:0002703	regulation of leukocyte mediated immunity	14/294	152/9263	0.00032811	0.01659748	0.01491032	NLRP3/CD81/IL18/HLA-B/CD28/LAMP1/IL23R/HSPD1/TNFSF4/HLA-A/ARRB2/GATA3/EXOSC6/WAS	14
GO:0051645	Golgi localization	4/294	12/9263	0.00040227	0.01966457	0.01766564	YWHAZ/SLC9A3R1/CDC42/STK11	4
GO:0002724	regulation of T cell cytokine production	5/294	21/9263	0.00041682	0.01966457	0.01766564	NLRP3/CD81/IL18/TNFSF4/GATA3	5
GO:0032673	regulation of interleukin-4 production	5/294	21/9263	0.00041682	0.01966457	0.01766564	NLRP3/CD28/TNFSF4/GATA3/RARA	5
GO:0035088	establishment or maintenance of apical/basal cell polarity	5/294	21/9263	0.00041682	0.01966457	0.01766564	ANK1/SH3BP1/SLC9A3R1/MARK2/CDC42	5
GO:0061245	establishment or maintenance of bipolar cell polarity	5/294	21/9263	0.00041682	0.01966457	0.01766564	ANK1/SH3BP1/SLC9A3R1/MARK2/CDC42	5
GO:0032655	regulation of interleukin-12 production	7/294	44/9263	0.00042206	0.01966457	0.01766564	FOXP1/IRAK3/LTB/IL23R/HSPD1/TNFSF4/ARRB2	7
GO:0032615	interleukin-12 production	7/294	45/9263	0.00048644	0.02237001	0.02009606	FOXP1/IRAK3/LTB/IL23R/HSPD1/TNFSF4/ARRB2	7
GO:1902532	negative regulation of intracellular signal transduction	23/294	340/9263	0.00049896	0.02265149	0.02034894	BCL2L12/RASAL3/GNAI2/SESN1/NLRP3/IRAK3/DDX3X/SH3BP1/MAKPAP1/RRM2B/CRTC3/SPRY1/TAK3/HSPA1A/STMN3/SLC9A3R1/TMSB4X/CSK/ARRB2/STK11/ITGB1BP1/CDKN2D/CALM3	23
GO:0008285	negative regulation of cell population proliferation	25/294	384/9263	0.00050608	0.02268384	0.020378	HSF1/MXD4/CASP3/HSPA1B/CD164/RC3H1/SPRY1/HSPA1A/SLC9A3R1/KLF13/TSPAN32/HPGDS/ARG2/CSK/DACH1/JUN/GATA3/SKI/RGC C/RARA/SF1/STK11/ITGB1BP1/CDKN2D/PTGDR2	25

GO:0050778	positive regulation of immune response	29/294	475/9263	0.00052503	0.02323912	0.02087683	FOXP1/NLRP3/GRAP2/CD81/IL18/R3H1/LIME1/HLA-B/KRT1/CD28/LAMP1/TXK/PLCG2/IL23R/HSPD1/LAT/TNFSF4/RAC1/CDC42/ADAM8/CSK/HLA-A/GATA3/RGCC/RARA/EXOSC6/TEC/STK11/WAS	29
GO:0007265	Ras protein signal transduction	20/294	278/9263	0.00053512	0.02339329	0.02101533	RASAL3/GRAP2/MAPKAP1/ABCA1/CFL1/SPRY1/STMN3/PSD4/DNMT1/GDI1/RAB11B/RAB2A/LAT/PLEKHG3/RAC1/CDC42/ARHGEF18/ARHGDI/JUN/WAS	20
GO:0032634	interleukin-5 production	4/294	13/9263	0.00056661	0.02417319	0.02171595	IL17RA/NLRP3/GATA3/RARA	4
GO:0032674	regulation of interleukin-5 production	4/294	13/9263	0.00056661	0.02417319	0.02171595	IL17RA/NLRP3/GATA3/RARA	4
GO:0010631	epithelial cell migration	14/294	161/9263	0.00058925	0.02454725	0.02205199	EMC10/PFN1/FOX1/SH3BP1/TNFSF12/DOCK5/HDAC9/TMSB4X/JUN/GATA3/RGCC/ITGB1BP1/GIPC1/CORO1B	14
GO:0090132	epithelium migration	14/294	161/9263	0.00058925	0.02454725	0.02205199	EMC10/PFN1/FOX1/SH3BP1/TNFSF12/DOCK5/HDAC9/TMSB4X/JUN/GATA3/RGCC/ITGB1BP1/GIPC1/CORO1B	14
GO:1901028	regulation of mitochondrial outer membrane permeabilization involved in apoptotic signaling pathway	6/294	34/9263	0.00061697	0.02540324	0.02282097	YWHAZ/MPV17L/CHCHD10/HSPA1A/YWHAB/PPP3CC	6
GO:0090130	tissue migration	14/294	162/9263	0.00062695	0.0255177	0.02292379	EMC10/PFN1/FOX1/SH3BP1/TNFSF12/DOCK5/HDAC9/TMSB4X/JUN/GATA3/RGCC/ITGB1BP1/GIPC1/CORO1B	14
GO:0035148	tube formation	9/294	76/9263	0.00063713	0.02563715	0.0230311	PFN1/CASP3/CF1/LMO4/SEMA4C/GATA3/SKI/RARA/ITGB1BP1	9

GO:0043372	positive regulation of CD4-positive, alpha-beta T cell differentiation	5/294	23/9263	0.00065427	0.02603114	0.02338504	NLRP3/IL18/IL23R/TNFSF4/RARA	5
GO:0002449	lymphocyte mediated immunity	15/294	182/9263	0.00066703	0.02624382	0.0235761	NLRP3/CD81/IL18/HLA-B/CD28/LAMP1/BCL3/IL23R/HSPD1/TNFSF4/HLA-A/ARRB2/GATA3/EXOSC6/WAS	15
GO:0008637	apoptotic mitochondrial changes	10/294	93/9263	0.0007006	0.02726177	0.02449058	YWHAZ/MPV17L/CHCHD10/HSPA1A/HSPD1/YWHAB/ARRB2/JUN/PPP3CC/IFI6	10
GO:0035743	CD4-positive, alpha-beta T cell cytokine production	4/294	14/9263	0.00077356	0.02945354	0.02645955	NLRP3/CD81/IL18/GATA3	4
GO:0071526	semaphorin-plexin signaling pathway	4/294	14/9263	0.00077356	0.02945354	0.02645955	SH3BP1/RAC1/ARRHGDI/SEMA4C	4
GO:0001667	ameboidal-type cell migration	16/294	205/9263	0.00080684	0.03039383	0.02730426	EMC10/PFN1/FOX1/SH3BP1/TNFSF12/DOCK5/CFL1/HDAC9/TMSB4X/JUN/SEMA4C/GATA3/RGCC/ITGB1BP1/GIPC1/CORO1B	16
GO:0030010	establishment of cell polarity	9/294	79/9263	0.00084717	0.03157699	0.02836715	SH3BP1/CFL1/SPRY1/SLC9A3R1/MARK2/CDC42/GATA3/STK11/FAM89B	9
GO:0032496	response to lipopolysaccharide	17/294	228/9263	0.00093407	0.03413906	0.03066878	JUNB/HSF1/CD6/FOXP1/CASP3/NFKBIB/NLRP3/HNRNPA0/IL18/IRAK3/ABCA1/PLCG2/IL23R/TNFSF4/JUN/PLSCR3/RARA	17
GO:0046637	regulation of alpha-beta T cell differentiation	7/294	50/9263	0.00093519	0.03413906	0.03066878	NLRP3/IL18/RC3H1/IL23R/TNFSF4/GATA3/RARA	7
GO:2001233	regulation of apoptotic signaling pathway	20/294	291/9263	0.00094953	0.03430913	0.03082156	YWHAZ/TRADD/BCL2L12/HSPA1B/GNAI2/DDX3X/MPV17L/MAL/TNFSF12/RRM2B/CHCHD10/HSPA1A/SLC9A3R1/TMC8/YWHAB/SKIL/A	20

							RRB2/PPP3CC/C DKN2D/IFI6	
GO:00 43542	endothelial cell migration	11/294	114/926 3	0.0009 6189	0.034404 49	0.03090 723	EMC10/FOXP1/S H3BP1/TNFSF12/ HDAC9/TMSB4X/ GATA3/RGCC/IT GB1BP1/GIPC1/C ORO1B	11
GO:00 32233	positive regulation of actin filament bundle assembly	6/294	37/9263	0.0009 8464	0.034520 97	0.03101 187	PFN1/SORBS3/R AC1/CDC42/RGC C/ITGB1BP1	6
GO:00 32720	negative regulation of tumor necrosis factor production	6/294	37/9263	0.0009 8464	0.034520 97	0.03101 187	HSF1/IRAK3/BCL 3/ARG2/ARRB2/R ARA	6
GO:00 51492	regulation of stress fiber assembly	7/294	51/9263	0.0010 5506	0.036627 13	0.03290 393	PFN1/SORBS3/R AC1/CDC42/RGC C/ITGB1BP1/WA S	7
GO:00 01838	embryonic epithelial tube formation	8/294	66/9263	0.0010 8608	0.037337 8	0.03354 236	PFN1/CASP3/CF L1/LMO4/SEMA4 C/GATA3/SKI/RA RA	8
GO:00 42692	muscle cell differentiatio n	13/294	153/926 3	0.0011 388	0.038480 69	0.03456 908	CASP3/MORF4L2 /CD81/FLT3LG/H DAC9/DNMT1/G6 PD/PTBP1/CDC4 2/ARRB2/SEMA4 C/SKI/RARA	13
GO:00 02697	regulation of immune effector process	19/294	274/926 3	0.0011 4105	0.038480 69	0.03456 908	PCBP2/NLRP3/C D81/IL18/RC3H1/I RAK3/HLA- B/CD28/LAMP1/IL 23R/HSPD1/TSP AN32/TNFSF4/HL A- A/ARRB2/GATA3/ RARA/EXOSC6/ WAS	19
GO:00 32633	interleukin-4 production	5/294	26/9263	0.0011 8306	0.039197 58	0.03521 309	NLRP3/CD28/TN FSF4/GATA3/RA RA	5
GO:00 01819	positive regulation of cytokine production	21/294	318/926 3	0.0011 8445	0.039197 58	0.03521 309	CD6/HSPA1B/IL1 7RA/NLRP3/CD8 1/IL18/DDX3X/LT B/CD28/HSPA1A/ BCL3/TXK/PLCG 2/IFNGR1/IL23R/ HSPD1/TNFSF4/ ADAM8/GATA3/R GCC/RARA	21
GO:00 72175	epithelial tube formation	8/294	67/9263	0.0012 0007	0.039346 86	0.03534 72	PFN1/CASP3/CF L1/LMO4/SEMA4 C/GATA3/SKI/RA RA	8



GO:19 03556	negative regulation of tumor necrosis factor superfamily cytokine production	6/294	39/9263	0.0013 1033	0.042218 06	0.03792 654	HSF1/IRAK3/BCL3/ARG2/ARRB2/RARA	6
GO:00 16331	morphogenesis of embryonic epithelium	8/294	68/9263	0.0013 2341	0.042218 06	0.03792 654	PFN1/CASP3/CFIL1/LMO4/SEMA4C/GATA3/SKI/RARA	8
GO:00 32649	regulation of interferon-gamma production	8/294	68/9263	0.0013 2341	0.042218 06	0.03792 654	IL18/BCL3/TXK/IL23R/HSPD1/TNFSF4/GATA3/RARA	8
GO:00 02237	response to molecule of bacterial origin	17/294	236/9263	0.0013 6499	0.043155 73	0.03876 889	JUNB/HSF1/CD6/FOXP1/CASP3/NFKBIB/NLRP3/HNRNPA0/IL18/IRAK3/ABCA1/PLCG2/IL23R/TNFSF4/JUN/PLSCR3/RARA	17
GO:00 51347	positive regulation of transferase activity	25/294	412/9263	0.0013 8916	0.043531 04	0.03910 605	GADD45A/GADD45G/CD81/IL18/UBE2S/DDX3X/MAPKAP1/TAOK3/DGKZ/JTB/MARK2/RPS2/LMO4/PFKFB2/IL23R/LAT/TMSB4X/AXIN1/SELRINC5/ADAM8/CSK/RGCC/STK11/ITGB1BP1/CALM3	25
GO:00 02369	T cell cytokine production	5/294	27/9263	0.0014 1474	0.043561 7	0.03913 359	NLRP3/CD81/IL18/TNFSF4/GATA3	5
GO:00 33120	positive regulation of RNA splicing	5/294	27/9263	0.0014 1474	0.043561 7	0.03913 359	NUP98/HSPA1A/SNRNP70/SF3B4/U2AF2	5
GO:00 30098	lymphocyte differentiation	18/294	258/9263	0.0014 296	0.043639 67	0.03920 364	FOXP1/NLRP3/IL18/RC3H1/IRF2BP2/CD28/FLT3LG/HDAC9/BCL3/PLCG2/IL23R/TCF7/TNFSF4/ZBTB7A/ADAM8/GATA3/RARA/STK11	18
GO:00 42129	regulation of T cell proliferation	10/294	103/9263	0.0015 4901	0.046823 46	0.04206 379	CD6/RASAL3/CASP3/CD81/IL18/RC3H1/CD28/IL23R/TNFSF4/ARG2	10
GO:00 10634	positive regulation of epithelial cell migration	9/294	86/9263	0.0015 6034	0.046823 46	0.04206 379	EMC10/PFN1/FOXP1/DOCK5/HDAC9/TMSB4X/JUN/GATA3/ITGB1BP1	9
GO:00 02699	positive regulation of immune	13/294	159/9263	0.0016 179	0.048142 73	0.04324 895	NLRP3/CD81/IL18/HLA-B/CD28/LAMP1/IL23R/HSPD1/TNF	13

	effector process						SF4/HLA-A/GATA3/RARA/EXOSC6	
GO:0110020	regulation of actomyosin structure organization	7/294	55/9263	0.00166	0.04898389	0.04400461	PFN1/SORBS3/RAC1/CDC42/RGCC/ITGB1BP1/WAS	7
GO:0007163	establishment or maintenance of cell polarity	11/294	122/9263	0.00167725	0.04908393	0.04409448	ANK1/SH3BP1/MAPKAP1/CFL1/SPRY1/SLC9A3R1/MARK2/CDC42/GATA3/STK11/FAM89B	11
GO:0032816	positive regulation of natural killer cell activation	4/294	17/9263	0.00170588	0.04951251	0.04447949	IL18/FLT3LG/LAMP1/IL23R	4

<b>Table S8: Antibodies Used in Flow Cytometry</b>		
<b>Targeting antigen</b>	<b>Company</b>	<b>Catalog/Clone</b>
Anti-Human BDCA1	Biolegend	Cat# 354208 Clone: 201A (FITC) (1:200 dilution)
Anti-Human CD117	Biolegend	Cat# 313206 Clone: 104D2 (APC) (1:200 dilution)
Anti-Human CD11c	Biolegend	Cat# 301604 Clone: 3.9 (FITC) (1:200 dilution)
Anti-Human CD123	Biolegend	Cat# 306014 Clone: 6H6 (FITC) (1:200 dilution)
Anti-Human CD127	Biolegend	Cat# 351320 Clone: A019D5 (PE/Cyanine7) (1:200 dilution)
Anti-Human CD14	Biolegend	Cat# 325604 Clone: HCD14 (FITC) (1:200 dilution)
Anti-Human CD16	Biolegend	Cat# 980104 Clone: 3G8 (APC) (1:400 dilution)
Anti-Human CD19	Biolegend	Cat# 302206 Clone: HIB19 (FITC) (1:200 dilution)
Anti-Human CD1a	Biolegend	Cat# 300104 Clone: HI149 (FITC) (1:200 dilution)
Anti-Human CD20	Biolegend	Cat# 302304 Clone: 2H7a (FITC) (1:200 dilution)
Anti-Human CD22	Biolegend	Cat# 363508 Clone: S-HCL-1 (FITC) (1:200 dilution)
Anti-Human CD3	Biolegend	Cat# 317306 Clone: OKT3 (FITC) (1:200 dilution)
Anti-Human CD34	Biolegend	Cat# 343504 Clone: 581 (FITC) (1:200 dilution)
Anti-Human CD4	Biolegend	Cat# 317428 Clone: OKT4 (PerCP/Cyanine5.5) (1:200 dilution)
Anti-Human CD4	Biolegend	Cat# 317408 Clone: OKT4 (FITC) (1:200 dilution)
Anti-Human CD45	BD	Cat# 506178 Clone: 2D1 (APC/H7) (1:200 dilution)
Anti-Human CD56	Biolegend	Cat# 318306 Clone: HCD56 (PE) (1:200 dilution)
Anti-Human CD8	Biolegend	Cat# 300924 Clone: HIT8a (PerCP/Cyanine 5.5) (1:200 dilution)
Anti-Human CRTH2	Biolegend	Cat# 350116 Clone: BM16 (PerCP/Cyanine5.5) (1:200 dilution)
Anti-Human FcεR1α	Biolegend	Cat# 334608 Clone: AER-37 (FITC) (1:200 dilution)
Anti-Human TBX21	ebioscience	Cat# 25-5825-82 Clone: ebio4B10 (PE/Cyanine7) (1:200 dilution)
Anti-Human TCRα/β	Biolegend	Cat# 306706 Clone: IP26 (FITC) (1:200 dilution)
Anti-Human TCRγ/δ	Biolegend	Cat# 331208 Clone: B1 (FITC) (1:200 dilution)
Anti-Human TCF7	Cell Signaling	Cat# 37636s Clone: C63D9 (APC) (1:200 dilution)
Anti-Human IL-13	Biolegend	Cat# 501908 Clone: JES10-5A2 (APC) (1:200 dilution)
Anti-Human AREG	ebioscience	Cat# 17-5370-42 Clone: AREG559
mouse IgG1, k isotype control	Biolegend	Cat# 400112 Clone: MOPC-21 (PE) (1:200 dilution)
mouse IgG1, k isotype control	Biolegend	Cat# 400120 Clone: MOPC-21 (APC) (1:200 dilution)
Rabbit IgG, isotype control	Cell Signaling	Cat# 3452S (Alexa Fluor 647) (1:200 dilution)
Rat IgG1, k isotype control	Biolegend	Cat# 400412 Clone: RTK2071 (APC) (1:200 dilution)

<b>Table S9: Primers for bulk RNA-Seq</b>
<b>Barcoded primers for reverse transcription and final library amplification in bulk RNA-Seq</b>
Reverse transcription primers for 5 ILC sorted from blood (raw reads deposited in GSM5134071)
donor 1 ILCs: GCCGGTAATACGACTCACTATAGGGAGTTCTACAGTCCGACGATCNNNNNNGTTCATTTTTTTTTTTTTTTTTTTTTT
donor 2 ILCs: GCCGGTAATACGACTCACTATAGGGAGTTCTACAGTCCGACGATCNNNNNACCATGTTTTTTTTTTTTTTTTTTTTT
donor 3 ILCs: GCCGGTAATACGACTCACTATAGGGAGTTCTACAGTCCGACGATCNNNNNACTCGATTTTTTTTTTTTTTTTTTTTTT
donor 4 ILCs: GCCGGTAATACGACTCACTATAGGGAGTTCTACAGTCCGACGATCNNNNNACGTACTTTTTTTTTTTTTTTTTTTTTT
donor 5 ILCs: GCCGGTAATACGACTCACTATAGGGAGTTCTACAGTCCGACGATCNNNNNCTGTGATTTTTTTTTTTTTTTTTTTTTT
Reverse transcription primers for 4 ILC samples sorted from blood (raw reads deposited in GSM5134072)
donor1 ILCs: GCCGGTAATACGACTCACTATAGGGAGTTCTACAGTCCGACGATCNNNNNTCACCATTTTTTTTTTTTTTTTTTTTTT
donor2 ILCs: GCCGGTAATACGACTCACTATAGGGAGTTCTACAGTCCGACGATCNNNNNTCTGTCTTTTTTTTTTTTTTTTTTTTTT
donor3 ILCs: GCCGGTAATACGACTCACTATAGGGAGTTCTACAGTCCGACGATCNNNNNNGTTGAGTTTTTTTTTTTTTTTTTTTTT
donor4 ILCs: GCCGGTAATACGACTCACTATAGGGAGTTCTACAGTCCGACGATCNNNNNACAGACTTTTTTTTTTTTTTTTTTTTTT
Final library amplification primers for all libraries:
RP1: AAT GAT ACG GCG ACC ACC GAG ATC TAC ACG TTC AGA GTT CTA CAG TCC GA
RPI1: CAA GCA GAA GAC GGC ATA CGA GAT CGT GAT GTG ACT GGA GTT CCT TGG CAC CCG AGA ATT CCA