

1 Spatial patterns of dental disease in patients with low salivary flow

2 Diana M. Proctor^{1,2}, Christof Seiler^{3,6}, Adam R. Burns¹, Samuel Walker⁴, Tina Jung⁴, Jonathan
3 Weng⁴, Shanne Sastiel⁴, Yoga Rajendran⁴, Yvonne Kapila⁴, Meredith E. Millman⁴, Gary C. Armitage⁴,
4 Peter M. Loomer⁵, Susan P. Holmes⁶, Mark I. Ryder⁴, David A. Relman^{1,7,8*}

5
6 **Affiliations**

7 ¹Division of Infectious Disease & Geographic Medicine, Department of Medicine, Stanford University
8 School of Medicine, Stanford, CA 94305 USA

9 ²National Human Genome Research Institute, National Institutes of Health, Bethesda, MD 20892 USA

10 ³Department of Data Science and Knowledge Engineering, Mathematics Centre Maastricht, Maastricht
11 University, The Netherlands

12 ⁴Division of Periodontology, University of California, San Francisco School of Dentistry, San
13 Francisco, CA 94143 USA

14 ⁵School of Dentistry, University of Texas Health Science Center at San Antonio, San Antonio, TX
15 78229 USA

16 ⁶Department of Statistics, Stanford University, Stanford, CA 94305 USA

17 ⁷Infectious Diseases Section, Veterans Affairs Palo Alto Health Care System, Palo Alto, CA 94304
18 USA

19 ⁸Department of Microbiology & Immunology, Stanford University School of Medicine, Stanford, CA
20 94305 USA

21 *Corresponding author: David A. Relman: relman@stanford.edu; Address: Encina E209, 616 Jane
22 Stanford Way, Stanford, California 94305-6165; Phone: 650-736-6822; Fax: 650-852-3291

24 Abstract word count: 295

25 Total word count: 5064

26 Tables/Figures: 5

27 References: 31

28 Keywords: supragingival microbiota, subgingival microbiota, dental caries, Sjögren's Syndrome,
29 hyposalivation, microbial dispersal, xerostomia

30

31 **Abstract**

32 Low salivary flow, or hyposalivation, is associated with an increased incidence of dental caries
33 and a shift in their location from biting surfaces towards coronal and root surfaces. However, the
34 relationship between salivary flow and periodontal disease is less clear. To identify clinical indicators
35 of low salivary flow -- including the spatial pattern of dental and periodontal disease, features of the
36 supra- and subgingival microbiota, and symptoms of dry mouth -- we enrolled individuals into two
37 cohorts. The low flow cohort (N = 32) consisted of individuals with a presumptive diagnosis of the
38 autoimmune disorder Sjögren's Syndrome (SS) while the control cohort (N = 119) consisted of healthy
39 controls. We constructed a series of tooth-specific linear models to quantify the extent to which patient
40 cohort, age, and unstimulated whole salivary flow rate (UWS-FR), independent of each other, are
41 associated with dental and periodontal disease at each tooth. While age and a diagnosis of SS
42 correlated with the site-specific increment of disease so too did UWS-FR. Not only were lower UWS-
43 FRs associated with a greater number of decayed, missing, or filled surfaces at 21 teeth, but they were
44 also associated with increased recession, as measured by clinical attachment loss (CAL), at 10 teeth
45 (adjusted $p < 0.05$). In addition, we examined microbiota community structure at different tooth sites
46 using data from 427 subgingival and supragingival samples of 6 individuals and found that microbial
47 dispersal is reduced in patients with low salivary flow, but only at supragingival and not at subgingival
48 sites. Finally, we found that complaints by subjects of a negative impact on overall quality of life were
49 associated with a UWS-FR less than 0.1 mL/min. Overall, our results suggest that novel predictors of
50 hyposalivation can be identified by integrating clinical, microbial, and patient history data.

51

52 **Introduction**

53 On average, the unstimulated whole salivary flow rate (UWS-FR) of healthy adults ranges
54 between 0.3 and 0.4 mL/min (Becks and Wainwright 1943). Clinically, hyposalivation, or low salivary
55 flow, is defined as an UWS-FR < 0.1 mL/min. Medication is the most common cause of
56 hyposalivation and Sjögren's Syndrome (SS), a prevalent chronic autoimmune disorder, is a second
57 major cause (von Bultzingslowen et al. 2007). In contrast to patients who experience low salivary flow
58 due to irradiation of cancers involving the head and neck, these two patient populations experience an
59 insidious onset of hyposalivation with delayed diagnoses. Most Sjogren's patients are diagnosed 6.5 or
60 more years after the onset of xerostomia and nine years after tooth loss has occurred (Baudet-Pommel
61 et al. 1994; Mignogna et al. 2005; Shiboski et al. 2012).

62 Delays in diagnosing hyposalivation may be due to several reasons. First, the salivary flow rate
63 threshold of 0.1 ml/min is imperfectly correlated with clinical phenotypes. Individuals with flow rates
64 < 0.1 mL/min may not experience signs or symptoms of low salivary flow, while individuals with flow
65 rates as high as 0.3 ml/min may complain of dry mouth (Ben-Aryeh et al. 1985; Dawes 2004). Second,
66 hyposalivation may antedate xerostomia, and patients often suffer from reduced salivary flow for years
67 before it is perceived (Mathews et al. 2008; von Bultzingslowen et al. 2007). Finally, even when
68 patients do report xerostomia to physicians, UWS-FR is not measured in the primary care setting.
69 Collectively these factors lead to diagnostic delays, preventable tooth loss, and an increased burden of
70 caries in medicated patients and in patients with SS (Baudet-Pommel et al. 1994).

71 Individuals with hyposalivation not only experience more caries, but they also experience a
72 shift in the spatial pattern of dental disease. In the elderly, the risk of root surface caries in the lower
73 jaw increases with the number of prescribed medications with xerostomic effects (Kitamura et al.

74 1986). Likewise, surgical removal of the salivary glands in rodents leads to an increase in root surface
75 caries affecting mandibular surfaces (Bowen et al. 1988). Compared with healthy individuals, patients
76 with SS are at an increased risk of developing not only root surface, but also coronal caries (Ravald
77 and List 1998). Irradiation of salivary glands in the course of cancer therapy leads to caries on the
78 incisal edges of anterior teeth, cusp tips of posterior teeth, and lingual surfaces (Dreizen et al. 1977).
79 Shifts in the site-specific occurrence of disease in 3 distinct patient populations suggests salivary flow
80 normally functions to protect mandibular root and coronal sites from caries. Moreover, these
81 population level data imply that salivary flow normally plays a role – either directly or indirectly -- in
82 maintaining a beneficial microbiota at these sites since the metabolic activity of the microbial consortia
83 at the tooth surface must change in order for cavitation to occur. When it occurs chronically, the loss of
84 salivary flow leads to a persistent shift in the spatial patterning of the oral microbiota (Proctor et al.
85 2018) .

86 Uncertainties surrounding the flow rate threshold predictive of increased disease risk highlight
87 the need for new diagnostic indicators, which may be used to predict low flow, before caries occur.
88 Towards that end, we sought to identify features of xerostomia and the microbiome that correlate with
89 flow rate and which may predict hyposalivation, since such features would permit early intervention.
90 Our results suggest that chronic low salivary flow is associated with an increase in DMFS and CAL at
91 a wider array of tooth sites than previously appreciated. In addition, we identify features of the
92 microbiota, including reduced rates of microbial dispersal, and symptoms of dry mouth that may serve
93 as indicators of hyposalivation. These observations are significant since they indicate new avenues for
94 diagnosing hyposalivation, a condition for which UWS-FR is imperfectly sensitive and specific.

95

96

97 **Results**

98 **Clinical and demographic features of the patient population**

99 The complete set of inclusion and exclusion criteria for each cohort is provided as
100 supplementary data (**Supplementary Methods**). Data were collected from 151 participants in 2
101 cohorts: the low flow cohort (N = 32) consisted of individuals with a presumptive diagnosis of SS
102 while the control cohort (N = 119) consisted of healthy controls. Gender identity, race, and ethnicity
103 did not significantly differ between the two groups (Chi-square tests, $p > 0.1$) (**Table S1**). The majority
104 of subjects in both cohorts were White or Asian and did not identify as Hispanic or Latino. The
105 proportion of females in the low flow group did not significantly differ from that of the controls (Chi-
106 square test, $p = 0.2$), though substantially more females than males were enrolled in both cohorts.
107 Roughly 93% of the low flow cohort identified as female, consistent with the known sex bias in the
108 occurrence of SS. Likewise, SS tends to be diagnosed in middle to late life, and the average age of
109 individuals in the low flow cohort (mean, 60.8 years) was higher than the average age of controls
110 (mean, 32.6 years). Despite a mean difference of 28 years, there was considerable overlap between the
111 two groups (**Figure 1a**; 95% confidence intervals (CIs) surrounding the unpaired mean difference,
112 23.8-32 years). Indeed, the controls appeared to segregate into 2 groups, the largest group consisting of
113 subjects under the age of 40 and the second group reflecting our push to enroll controls similar in age
114 to the SS patients. Despite our best efforts, just 20% of the controls sampled in this study were over the
115 age of 40.

116 As expected, based on inclusion and exclusion criteria, UWS-FRs varied significantly between
117 the two groups (**Figure 1b**). The mean UWS-FR of patients in the control cohort (0.470 mL/min) was

118 on average 0.335 mL/min higher than the mean rate of the low flow cohort (0.129 mL/min) (95% CI,
119 0.253--0.410 mL/min). Given that we excluded individuals with active disease, all measures of disease
120 reflect a past history of dental disease.

121 Further, the incidence of past dental disease was higher in the low flow cohort compared to the
122 controls. The mean difference in decayed missing filled surfaces (DMFS) between cohorts differed
123 significantly from 0 (**Figure 1c**) (95% CI, 30.4-52.4) with a mean DMFS of 27.5 in controls and mean
124 DMFS of 68.9 in the low flow cohort. Similarly, mean clinical attachment loss (CAL) was
125 significantly higher in the low flow cohort (2.25) compared to the controls (0.891) with a mean
126 difference of 1.38 (**Figure 1d**) (95% CI, 1.01-1.74). The gingival margin cemento-enamel junction
127 (GM-CEJ) was also higher in the low flow cohort (mean, 5.23) compared to controls (mean, 2.93) with
128 a substantial mean difference of 2.3 (**Figure 1e**) (95% CI, 1.68-2.88). Despite higher measures of
129 DMFS, CAL, GM-CEJ in the low flow cohort, bleeding on probing (BOP) and probing depth (PD) did
130 not significantly differ between the two groups suggesting differences in GM-CEJ and CAL reflected
131 past or chronic periodontal disease rather than active disease (**Figures 1f, 1g**).

132

133 **Age and cohort exert independent effects on the spatial pattern of dental disease**

134 Given that age is known to be correlated with the prevalence of dental disease (Algarni et al.
135 2018; Kassebaum et al. 2017) we sought to evaluate the relationship between salivary flow and site-
136 specific prevalence of dental disease while controlling for age. We used regression coefficients to
137 quantify the extent to which the site-specific increment of disease (DMFS, CAL, GM-CEJ, BOP, PD)
138 varied depending on a one-unit change in each of several standardized predictors (age, UWS-FR,
139 cohort, and the interaction between cohort and UWS-FR) while holding the other 3 predictors constant.

140 A site specific DMFS increment was directly correlated with age across virtually all teeth
141 (adjusted $p < 0.05$) excluding 3 anterior teeth (teeth 6, 24, 27). The site-specific effects of age can be
142 discerned by comparing the regression coefficients for each tooth to each other. At tooth 8, DMFS
143 increased by 0.076 Ordered Quantile (ORQ) transformed surfaces for each year of life while at tooth
144 15 DMFS increased by 0.289 QRQ surfaces, a rate approximately 3.8 times higher (**Figure 2a**).
145 Indeed, DMFS coefficients for age were about 3-20 times higher at posterior compared to anterior
146 sites, consistent with a higher rate of attack for posterior compared to anterior teeth (**Figure 2a**).
147 Similarly, age was a significant and direct predictor of CAL (**Figure 2b**), and GM-CEJ (**Figure 2c**) for
148 all tooth sites (adjusted $p < 0.05$). While coefficients for periodontal measures tended to be higher at
149 posterior versus anterior teeth, in both jaws, coefficients did not clearly segregate into anterior and
150 posterior groups, as they did for DMFS. In contrast to CAL and GM-CEJ, BOP and PD were
151 correlated with age at a limited number of tooth sites. BOP (**Figure 2d**) was correlated with age at 4
152 mandibular sites (teeth 19, 23, 24, 30) and 1 maxillary site (tooth 2) while PD (**Figure 2e**) was
153 significantly correlated with age at 3 maxillary sites (teeth 2, 5, 15) and 1 mandibular site (tooth 24).

154 Next, we sought to examine the independent contribution of cohort, or having a presumptive
155 diagnosis of SS, on the site-specific increment of dental disease. Across all disease metrics, the
156 regression coefficients for cohort were smaller than those for age, suggesting that cohort has a smaller
157 effect size than age, though it still explains variation in the occurrence of dental disease. With a
158 categorical variable as the predictor, the regression coefficients represent the difference in the average
159 disease increment between the control and low flow cohorts. In the low flow cohort, 16 teeth had
160 significant coefficients that could be distinguished from zero (**Figure 2f**). Negative coefficients were
161 observed at several anterior teeth in the maxilla (teeth 6, 8, 11) and mandible (teeth 22, 23, 24, 25). In
162 addition, while both groups tended to have more caries at posterior sites, low flow subjects had

163 between 0.09 and 0.23 more QRQ DMFS per tooth at maxillary teeth 3, 5, 6, and 14, and mandibular
164 teeth 18, 19, 30, and 31, as compared to the reference group.

165 After adjusting for multiple testing, CAL differed significantly at 21 sites between patient
166 cohorts (**Figure 2g**). Compared to controls, recession was on average 0.48 QRQ mm (range, 0.41-0.56
167 QRQ mm) greater in the low flow cohort at anterior maxillary teeth (teeth 6, 7, 8, 9, 10, 11) compared
168 to controls, again holding all other predictors constant. Similarly, CAL was greater by an average of
169 0.53 QRQ mm at anterior mandibular (teeth 22, 23, 24, 25, 26, 27) sites, 0.34 mm at posterior
170 maxillary (teeth 3, 4, 5, 12, 13, 14) and 0.39 QRQ mm at posterior mandibular (teeth 20, 21, 30) sites.
171 In contrast to CAL, GM-CEJ tended to be greater in the low flow cohort compared to controls at a
172 more limited number of teeth (**Figure 2h**), including just 9 teeth in the mandible (teeth 19, 21, 22, 23,
173 24, 25, 26, 27, 30) and 3 in the maxilla (teeth 7, 10, 12). BOP was not significantly correlated with
174 cohort at any site (**Figure 2i**) while patients with low flow had higher PD at predominantly maxillary
175 sites (teeth 3, 4, 6, 8) though one mandibular site (tooth 24) also reached significance (**Figure 2j**).

176 Since we enrolled individuals with a presumptive diagnosis of Sjogren's Syndrome in our low
177 flow cohort, effects related to cohort could be attributable to a reduction in salivary flow as well as
178 changes in salivary composition or immune function. To assess the explicit effect of flow rate on
179 dental disease, we also included UWS-FR in our models, allowing us to see its contribution
180 independent of either age or cohort. Compared to age and cohort, coefficient sizes for UWS-FR were
181 universally smaller across all disease metrics, indicating an overall smaller effect of flow rate on
182 disease outcomes. Despite a relative difference in the magnitude of effect sizes, UWS-FR was
183 significantly correlated with DMFS, CAL, and GM-CEJ at a variety of different tooth sites. In
184 particular, 21 tooth sites (**Figure 2k**), including anterior maxillary (teeth 7, 8, 9, 10, 11), posterior
185 maxillary (teeth 2, 3, 5, 12, 13), anterior mandibular (teeth 22, 23, 24, 25, 26, 27), and posterior

186 mandibular (teeth 19, 21, 29, 30) sites. Whether in the maxilla or mandible, anterior sites tended to
187 have negative correlation coefficients indicating that as UWS-FR increased the number of DMFS
188 decreased at these sites. In contrast to the wide variety of sites exhibiting a correlation between DMFS
189 and UWS-FR, CAL was correlated with UWS-FR at a smaller number of sites (**Figure 2l**) including 3
190 sites in the upper right jaw (teeth 2, 5, 6) and 7 sites in the lower jaw (teeth 20, 21, 22, 23, 27, 27, 31).
191 Even fewer sites exhibited a correlation between GM-CEJ and UWS-FR (**Figure 2m**), including 2
192 molars (teeth 2, 19) and 1 incisor (tooth 26). BOP was correlated with UWS-FR at just on tooth site
193 (tooth 9; **Figure 2n**) while PD was not correlated with UWS-FR at any site (**Figure 2o**). Taken
194 together, these data suggest that in patients with a presumptive diagnosis of Sjogren Syndrome there is
195 a detectable increase in the site-specific increment of caries and periodontal disease that is attributable
196 to salivary flow rate.

197 Next, we explored the interaction between cohort and UWS-FR. In particular, we were
198 interested in knowing whether the direction or magnitude of the effect of UWS-FR differed between
199 the reference cohort (i.e, controls) and the low flow cohort. Out of 25 significant coefficients for the
200 interaction between cohort and UWSFR as a predictor of DMFS, 22 were negative. The mandibular
201 molars were the exception (tooth 18, 19, 30) with coefficients that ranged between 0.10-0.17 (**Figure**
202 **2p**). Consistent with this finding, we observed in a less sophisticated model that as UWS-FR decreased
203 in the low flow cohort the DMFS increment increased at a greater rate than the DMFS increment
204 increased with reductions in UWS-FR in the control cohort (**Supplementary Figure 1**). Several
205 coefficients for the interaction between cohort and CAL were also significant in the maxilla (teeth 4, 5,
206 6, 10, 11, 12, 13, 15) and mandible (teeth 19, 20, 28, 31) (**Figure 2q**) with similar patterns of disease
207 observed when considering GM-CEJ (**Figure 2r**). The interaction between cohort and UWS-FR was
208 not significantly correlated with BOP (**Figure 2s**) or PD (**Figure 2t**) at any site.

209

210 **Impact of age and low salivary flow on the microbiota**

211 To examine whether the differences in past dental disease were associated with shifts in the
212 oral microbiota we next analyzed the relationship of age, cohort, and UWS-FR to structure of the
213 subgingival microbiota from each of 3 control and 3 low flow patients. Subgingival microbiota
214 analysis from the first molars, canines, and central incisors was integrated with previously-published
215 data from the supragingival microbiota at these same teeth in these same 6 patients (Proctor et al.
216 2018).

217 Differences in structure of the supragingival and subgingival communities, based on Bray
218 Curtis dissimilarity, explained segregation of samples along axis 1, which accounted for 17.6% of the
219 variation (**Figure 3**). UWS-FR explained differences among subgingival and supragingival
220 communities along axis 2, which accounted for 12.8% of the variation in the data (**Figure 3a**). On the
221 other hand, age co-segregated with UWS-FR at subgingival but not at supragingival sites (**Figure 3b**).
222 Supragingival sites scored as 1 or 2 DMFS clustered together in the low flow cohort segregating from
223 supragingival sites with 0 DMFS (**Figure 3c**). At subgingival sites, samples from younger control
224 subjects tended towards positive scores along axis 2 while samples from the older low flow subjects
225 tended towards neutral to negative scores along axis 2. At supragingival sites, the one older control
226 subject's (55.2 years)

227 supragingival samples clustered with the two young control subject's communities (23 and 28 years).
228 Similar results were obtained when using different distance metrics (**Supplementary Figure 2**).
229 Examining axis 1 scores as a function of tooth class revealed that subgingival communities, unlike
230 supragingival communities, do not differ by tooth class in either the low flow or control cohorts

231 **(Supplementary Figure 3).**

232 Constrained correspondence analysis revealed that age, GM-CEJ, PD and CAL were correlated
233 with each other and explained the segregation of low flow samples with positive scores along axis 1,
234 consistent with the site-specific regression models (**Figure 2**). Subgingival and supragingival sites
235 from subject 3-303 had higher CAL and lower DMFS values than sites from subject 3-301. At the
236 same time, subgingival and supragingival sites from subject 3-301 were enriched in *Streptococcus* and
237 *Veillonella* species (ASV12, ASV4, ASV7, and ASV8) and distinct from sites that were enriched in
238 *Prevotella denticola* (ASV11) along axis 2. Samples from control subjects with higher UWS-FR had
239 negative scores on axis 1 along with samples from one low flow subject, 3-302 who had the highest
240 DMFS scores among these subjects (**Supplementary Figure 4**). Taken together, these pilot data
241 suggest that the composition of the microbiota is correlated with age, cohort, and flow rate, potentially
242 reflecting correlations between the incidence of disease at different sites related to these predictors.

243 **Low salivary flow is associated with an increase in rates of microbial migration**

244 In our prior work, we observed that communities inhabiting exposed tooth surfaces of different
245 tooth classes could be differentiated from one another in controls, but not low flow subjects. Here, we
246 report that subgingival communities do not differ based on tooth class in either cohort, in these 6
247 individuals. Based on these observations, we hypothesized that reductions in salivary flow result in a
248 net increase in microbial dispersal, defined here as an increase in the movement or retention of
249 microbes between sites, at supragingival sites. To test this hypothesis, we used two models of
250 microbial dispersal, investigating whether rates of microbial migration differ among tooth habitats
251 (subgingival, supragingival) within an individual as well as between individuals based on cohort (i.e.,
252 in 3 low flow patients vs. 3 controls).

253 Regardless of cohort, migration rates were higher at supragingival compared to subgingival
254 sites (**Figure 4, Table S2**). In addition, migration rates were higher in patients with low salivary flow
255 compared to controls, suggesting that salivary flow moderates the rate of migration in the healthy
256 human

257 oral cavity. Further, we observed a significant interaction between participant cohort and the gingival
258 habitat, with a substantial difference in migration between the two cohorts at supragingival sites with a
259 less pronounced difference at subgingival sites. These findings were robust to the method used to infer
260 migration (**Supplementary Figure 5; Supplementary Results**) and suggest an increased rate of
261 migration across the supragingival area of the mouth in the low flow cohort.

262

263 **Subjective predictors of low salivary flow**

264 Next, we investigated the extent to which complaints of dry mouth are predictive of low
265 salivary flow using a previously developed Visual Analog Scale (VAS) (Pai et al. 2001) containing six
266 questions on quality of life and feelings of dry mouth, which we adapted by the addition of a question
267 concerning the extent to which patients experienced dryness of the hard palate. Members of the low
268 flow cohort complained of impaired ability to swallow due to dry mouth, impaired overall quality of
269 life, impaired ability to speak, as well as feelings of dryness impacting the throat, tongue, lips and hard
270 palate ($p < .01$, **Supplementary Figure 6**).

271 Individuals rated their responses to questions, on the VAS, based on the perceived severity of
272 their symptoms. A principal component analysis of these ratings was performed to identify questions
273 whose responses could segregate patients based on the severity of their complaints of dry mouth

274 **(Figure 5a)**. The first axis explained 86% of the variation in the data and principally segregated
275 patients into the low and “not low” cohorts with low flow subjects sharing positive scores along axis 1.
276 The 12 control subjects who grouped with the low flow screening cohort also tended to have a lower
277 UWS-FR than the 61 control subjects who clustered together, though the difference in means was not
278 significant. A conditional inference tree was used to identify the symptomatic complaints that were
279 most effective at separating patients into low flow and not low flow cohorts **(Figure 5b)**. While these
280 results should be validated on a larger dataset, 84.6% of subjects (11/13) in this study who indicated
281 that low salivary flow negatively impacted their overall quality of life (VAS \geq 56) had flow rates of
282 less than 0.1 ml/min. On the other hand, most subjects who rated a negligible impact of low flow on
283 their quality of life as well as an absence of dryness on their lips had flow rates exceeding 0.1 ml/min.
284 The AUC of our model exceeded 84% with 10-fold cross validation. These same significant predictors
285 were also identified using the random forest algorithm as the most discriminative of patients in the low
286 flow versus the control cohort **(Supplementary Figure 7)**.

287

288 **Discussion**

289 Hyposalivation is associated with reduced quality of life, including reduced oral health quality
290 of life, even in patients whose dental health is well managed subsequent to diagnosis. Given that
291 patients with hyposalivation are typically not diagnosed until they have lost a first tooth to disease, a
292 critical need in this patient population is the development of methods to identify low salivary flow
293 before the onset of dental caries, so that interventions can be implemented to prevent deterioration of
294 oral health quality of life. Our goal was to identify microbial and symptomatic predictors of salivary
295 flow, analyzing multi-faceted data on the same patient population.

296 Aging is associated with spatial patterns in the incidence of dental disease, impacting surfaces

297 above and below the gumline (Algarni et al. 2018; Kassebaum et al. 2017). Gingival recession
298 increases as a function of age, exposing root surfaces which become vulnerable to caries. UWS-FR has
299 been shown to decrease as a function of age in individuals taking medications as well as in the
300 otherwise healthy elderly (Fure and Zickert 1990). Prior work suggests that the function of the
301 submandibular glands decreases with age, with reductions in UWS and SWS secretions averaging
302 between 22% to 39%, respectively (Baum 1981; Pedersen et al. 1985). Reductions in salivary flow
303 may explain the increase in the incidence of root surface caries subsequent to the sixth decade of life
304 (Sumney et al. 1973). Our data support the hypothesis that aging and the effects of chronic low
305 salivary flow exert cumulative effects on the shifting spatial pattern of dental disease in patients with
306 hyposalivation.

307 Dental diseases can be considered ecological catastrophes that leave longstanding impressions
308 on the oral ecosystem (Marsh 2006). Since restoration of dental caries fails to eliminate cariogenic
309 bacteria from smooth surface margins, restored surfaces may serve as reservoirs for reinfection of sites
310 adjacent to or distant from the restoration (Featherstone 2000). Current evidence indicates patients with
311 low salivary flow have a microbiota enriched in cariogenic bacteria (Almstah et al. 2003; Almstahl et
312 al. 2001; Eliasson et al. 2006; Proctor et al. 2018). Here, we report that patients with hyposalivation
313 experience a higher number of decayed, missing and filled surfaces, and thus harbor more reservoirs
314 for cariogenic bacteria, and that they also experience an increase in detectable rates of microbial
315 migration.

316 We hypothesize that the increased rate of migration at supragingival surfaces may underlie the
317 increased risk of dental caries patients with hyposalivation experience post-restoration and despite
318 fastidious compliance with dental care regimens (Segal et al. 2009). Consistent with *in vitro* studies of
319 shear force (Fernandez et al. 2017), we propose that our preliminary data suggest shear associated with

320 salivary flow may control the diversity and composition of the supragingival biofilm *in vivo* by
321 limiting dispersal. Under normal circumstances, microbes which detach from supragingival surfaces
322 are marshalled out of the oral cavity through the combined effects of abrasion from the tongue,
323 salivary flow, and deglutition. We propose that following detachment, where there is chronic
324 suppression of flow rates, microbial species are able to successfully attach and grow as part of the
325 tooth-associated supragingival biofilm at sites distal to their origin. Thus, salivary flow may hinder the
326 process of attachment and growth at supragingival sites. In contrast to supragingival sites, our
327 preliminary data suggest that salivary flow does not exert top-down control over the rate of dispersal
328 between subgingival sites.

329 Dispersal between subgingival sites may be controlled more by the rate of exudation of
330 gingival crevicular fluid from the gingival sulcus to the gingival margin than by the rate of salivary
331 flow. Moreover, desquamation of the epithelium may also limit dispersal into the subgingival crevice.
332 Alternatively, out of 12 teeth that we sampled only 4 teeth (tooth 8 and 9 or 24 and 25) had sites
333 immediately adjacent to each other. As a result, if dispersal between subgingival sites occurs at a
334 greater frequency between adjacent teeth than between distal teeth our power to detect differences in
335 rates of migration between subgingival sites in controls vs. low flow subjects may have been limited,
336 particularly when considering our overall small sample size. Future studies that survey a larger number
337 of teeth at sites above and below the gumline are needed to validate these observations.

338 Diagnostics that identify patients who may be suffering from occult low salivary flow should
339 mitigate risk of recurrent dental disease in these patients. We identified two symptomatic complaints as
340 the most discriminative, identifying salivary flow rates < 0.1 mL/min with ~85% accuracy. These
341 symptomatic complaints – the extent to which dry mouth negatively impacted overall quality of life,
342 and the extent to which dryness was felt on the tongue – were as effective at distinguishing different

343 microbial communities as UWS-FR, suggesting that, in our cohort, flow rate and xerostomic
344 complaints are highly correlated. Our findings are consistent with prior work suggesting that functional
345 impairment is the most discriminative xerostomic complaint for separating patients based on salivary
346 hypofunction (Sreebny and Valdin 1988). Age related xerostomic complaints are known to markedly
347 increase in the 6th decade of life with women more frequently reporting symptoms of dryness
348 compared to men (Niklander et al. 2017). In response to anticholinergic suppression of salivary flow,
349 older adults experience more prolonged functional impairment, as measured by both flow rate and
350 symptomatic complaints of xerostomia, with a longer duration of difficulties speaking and swallowing
351 due to dryness, as well as longer periods of dryness reported on the lips. Future large-scale prospective
352 studies should endeavor to examine the relative onset of xerostomic complaints and hyposalivation
353 over the decades of human life.

354 Our study was limited by a design that enrolled only patients having low salivary flow due to a
355 presumptive diagnosis of SS, rather than including patients who experienced low salivary flow due to a
356 wide variety of conditions. This study design resulted in an observational study with a relatively small
357 sample size and an uneven distribution of ages with a younger control cohort and an older low flow
358 cohort. While these challenges can be addressed statistically an ideal design would include age
359 matching between participant cohorts. Despite these limitations our work provides a framework,
360 including a script for reproducibility, that can be used by others to integrate the analysis of microbiome
361 data with clinical data and patient histories.

362

363 **Methods**

364

365 **Human Subjects**

366 Subjects were enrolled into a larger study of hyposalivation. Written, informed consent was
367 obtained from all participants prior to dental examination or sample collection in compliance with
368 human subjects protocols approved by the University of California, San Francisco (UCSF) Human
369 Research Protection Program and Institutional Review Board (Protocol 11-06273), and the Stanford
370 University Administrative Panels on Human Subjects in Medical Research (Protocol 21586). Subjects
371 were recruited into 2 cohorts: (1) 152 healthy adults were recruited into a “control cohort”; and (2) 32
372 individuals who experienced low salivary flow due to the autoimmune disorder, SS, were recruited into
373 a “low-flow cohort”. A complete description of clinical data measurements and sample processing
374 workflows are included in **Supplementary Methods**.

375 **Statistical analysis of clinical and demographic data**

376 The `dabestr` package in R (Ho et al. 2019) was used to assess between-group differences in
377 clinical and demographic features. A bootstrap confidence interval was constructed surrounding
378 estimates of the mean difference between the groups. Bootstrap resampling was used to compute
379 assumption-free confidence intervals. Bias correction and acceleration were used in cases of skewness.
380 Between-group differences in ethnicity, race and gender were evaluated using chi-square tests.

381 **Evaluation of hyposalivation effects on spatial distribution of oral disease**

382 A series of site-specific generalized linear models were evaluated to determine the spatial
383 distribution of oral disease (DMFS, CAL, PD, GM-CEJ, and BOP) with respect to the following
384 predictors: age, cohort, UWS-FR, and cohort:UWS-FR (interaction between cohort and UWS-FR).
385 Response variables were transformed using the Ordered Quantile (ORQ) normalization transformation
386 with the `orderNorm` function within the package `bestNormalize`. This model was applied to

387 each tooth (excluding third molars) using the whole tooth average measurement of each clinical
388 variable. The confidence intervals of each model were plotted to assess the extent to which each
389 predictor explains the spatial patterning of dental disease. P-values, assessing whether coefficients
390 could be distinguished from 0, were adjusted by controlling the false discovery rate (FDR) at 5% using
391 the Benjamini-Hochberg (BH) (Benjamini and Hochberg 1995).

392 **Analysis of oral microbial communities**

393 Supragingival samples from 3 low flow and 3 control patients previously described (SRA
394 SUB10454805) were analyzed with newly generated subgingival data from the same patients, yielding
395 a total of 427 samples. A complete description of statistical approaches to the analysis of the
396 microbiome is included in **Supplementary Methods**.

397 **Analysis of an adapted visual analog scale (VAS)**

398 Subjects were asked to use a visual analog scale to rate on a scale of 0 to 100 the extent to
399 which they felt dry mouth negatively impacted their ability to swallow, their overall quality of life, and
400 their ability to speak. In addition, subjects were asked to rate on a scale of 0 to 100 the overall dryness
401 of their throat, tongue, lips, and hard palate. The specific questionnaire is provided as Supplementary
402 Data. A total of 106 individuals responded to the survey, including 73 controls and 24 low flow
403 individuals. Responses from all individuals were analyzed by principal components analysis using the
404 `prcomp` function in base R. A classification tree was generated using the `rpart` function in the
405 `rpart` package.

406 **Data availability**

407 The data supporting the results of this study are available in the NIH Short Read Archive, under

408 SRA accession number SRP126946 (<http://www.ncbi.nlm.nih.gov/sra/22016164-22016299>). The code
409 and data that were used to generate these findings can also be found at
410 <https://github.com/dmap02/spatial-pattern-dental-disease>. All other data supporting the findings of this
411 study are available within the article and its Supplementary Information files, or are available from the
412 authors upon request.

413 **Acknowledgements**

414 We thank colleagues at Stanford and at UCSF who provided technical support for this project,
415 including Swetha Kanukula, Lakshmi Karayil, Muneet Shoker, Divya Vadlamudi, Saba Dolatshahi,
416 Anchita Venkatesh, Nicole Davis, and Felix Chen. This work was supported by the National Institutes
417 of Health (R01DE023113 to D.A.R.), the Chan Zuckerberg Biohub Microbiome Initiative (D.A.R.),
418 and by the Thomas C. and Joan M. Merigan Endowment at Stanford University (D.A.R.). Survey data
419 were collected and managed using REDCap electronic data capture tools hosted at Stanford
420 University.

421 **Author contributions**

422 DMP, PMP, GCA, MIR, DAR, SPH: Conceived of study/developed IRB protocols. DMP:
423 Wrote the first draft of the manuscript. MEM: performed literature review. DMP, CS, ARB, SW, TJ,
424 JW, SS, MM: performed data analysis. YR, MIR, DAR, SPH: assisted with the interpretation of data.
425 CS and SPH guided statistical analysis. All authors reviewed and approved of the manuscript.

426

427

428 **References**

429

430 Algarni AA, Ungar PS, Lippert F, Martinez-Mier EA, Eckert GJ, Gonzalez-Cabezas C, Hara AT.
431 2018. Trend-analysis of dental hard-tissue conditions as function of tooth age. *J Dent.* 74:107-
432 112.

433 Almstah IA, Wikstrom M, Stenberg I, Jakobsson A, Fagerberg-Mohlin B. 2003. Oral microbiota
434 associated with hyposalivation of different origins. *Oral Microbiol Immunol.* 18(1):1-8.

435 Almstahl A, Wikstrom M, Kroneld U. 2001. Microflora in oral ecosystems in primary Sjögren's
436 syndrome. *J Rheumatol.* 28(5):1007-1013.

437 Baudet-Pommel M, Albuissou E, Kemeny JL, Falvard F, Ristori JM, Fraysse MP, Sauvezie B. 1994.
438 Early dental loss in sjogren's syndrome. Histologic correlates. European community study
439 group on diagnostic criteria for sjogren's syndrome. *Oral Surg Oral Med Oral Pathol.*
440 78(2):181-186.

441 Baum BJ. 1981. Clinical science: Evaluation of stimulated parotid saliva flow rate in different age
442 groups. *J Dent Res.* 60(7):1292-1296.

443 Becks H, Wainwright WW. 1943. Human saliva: XIII. Rate of flow of resting saliva of healthy
444 individuals. *Journal of dental research.* 22(5):391-396.

445 Ben-Aryeh H, Miron D, Berdicevsky I, Szargel R, Gutman D. 1985. Xerostomia in the elderly:
446 prevalence, diagnosis, complications and treatment. *Gerodontology.* 4(2):77-82.

447 Benjamini Y, Hochberg Y. 1995. Controlling the false discovery rate: A practical and powerful
448 approach to multiple testing. *Journal of the Royal Statistical Society: Series B*
449 (Methodological). 57(1):289-300.

450 Bowen WH, Madison KM, Pearson SK. 1988. Influence of desalivation in rats on incidence of caries
451 in intact cagemates. *J Dent Res.* 67(10):1316-1318.

452 Dawes C. 2004. How much saliva is enough for avoidance of xerostomia? *Caries Res.* 38(3):236-240.

453 Dreizen S, Brown LR, Daly TE, Drane JB. 1977. Prevention of xerostomia-related dental caries in
454 irradiated cancer patients. *J Dent Res.* 56(2):99-104.

455 Eliasson L, Carlen A, Almstahl A, Wikstrom M, Lingstrom P. 2006. Dental plaque pH and micro-
456 organisms during hyposalivation. *J Dent Res.* 85(4):334-338.

457 Featherstone JD. 2000. The science and practice of caries prevention. *J Am Dent Assoc.* 131(7):887-
458 899.

459 Fernandez CE, Aspiras MB, Dodds MW, Gonzalez-Cabezas C, Rickard AH. 2017. The effect of
460 inoculum source and fluid shear force on the development of in vitro oral multispecies
461 biofilms. *J Appl Microbiol.* 122(3):796-808.

462 Fure S, Zickert I. 1990. Salivary conditions and cariogenic microorganisms in 55, 65, and 75-year-old
463 swedish individuals. *Scand J Dent Res.* 98(3):197-210.

464 Ho J, Tumkaya T, Aryal S, Choi H, Claridge-Chang A. 2019. Moving beyond p values: Data analysis
465 with estimation graphics. *Nat Methods.* 16(7):565-566.

466 Kassebaum NJ, Smith AGC, Bernabe E, Fleming TD, Reynolds AE, Vos T, Murray CJL, Marcenes
467 W, Collaborators GBDOH. 2017. Global, regional, and national prevalence, incidence, and
468 disability-adjusted life years for oral conditions for 195 countries, 1990-2015: A systematic
469 analysis for the global burden of diseases, injuries, and risk factors. *J Dent Res.* 96(4):380-387.

470 Kitamura M, Kiyak HA, Mulligan K. 1986. Predictors of root caries in the elderly. *Community Dent*
471 *Oral Epidemiol.* 14(1):34-38.

472 Marsh PD. 2006. Dental diseases -- are these examples of ecological catastrophes? *Int J Dent Hyg.* 4
473 Suppl 1:3-10; discussion 50-12.

474 Mathews SA, Kurien BT, Scofield RH. 2008. Oral manifestations of sjogren's syndrome. *J Dent Res.*
475 87(4):308-318.

476 Mignogna MD, Fedele S, Lo Russo L, Lo Muzio L, Wolff A. 2005. Sjogren's syndrome: The
477 diagnostic potential of early oral manifestations preceding hyposalivation/xerostomia. *J Oral*
478 *Pathol Med.* 34(1):1-6.

479 Niklander S, Veas L, Barrera C, Fuentes F, Chiappini G, Marshall M. 2017. Risk factors,
480 hyposalivation and impact of xerostomia on oral health-related quality of life. *Braz Oral Res.*
481 31:e14.

482 Pai S, Ghezzi EM, Ship JA. 2001. Development of a visual analogue scale questionnaire for subjective
483 assessment of salivary dysfunction. *Oral Surg Oral Med Oral Pathol Oral Radiol Endod.*
484 91(3):311-316.

485 Pedersen W, Schubert M, Izutsu K, Mersai T, Truelove E. 1985. Age-dependent decreases in human
486 submandibular gland flow rates as measured under resting and post-stimulation conditions. *J*
487 *Dent Res.* 64(5):822-825.

488 Proctor DM, Fukuyama JA, Loomer PM, Armitage GC, Lee SA, Davis NM, Ryder MI, Holmes SP,
489 Relman DA. 2018. A spatial gradient of bacterial diversity in the human oral cavity shaped by
490 salivary flow. *Nat Commun.* 9(1):681.

491 Ravald N, List T. 1998. Caries and periodontal conditions in patients with primary sjogren's syndrome.
492 *Swed Dent J.* 22(3):97-103.

493 Segal B, Bowman SJ, Fox PC, Vivino FB, Murukutla N, Brodscholl J, Ogale S, McLean L. 2009.
494 Primary Sjögren's syndrome: Health experiences and predictors of health quality among
495 patients in the united states. *Health Qual Life Outcomes*. 7:46.

496 Shiboski SC, Shiboski CH, Criswell L, Baer A, Challacombe S, Lanfranchi H, Schiodt M, Umehara H,
497 Vivino F, Zhao Y et al. 2012. American college of rheumatology classification criteria for
498 Sjögren's syndrome: A data-driven, expert consensus approach in the Sjögren's international
499 collaborative clinical alliance cohort. *Arthritis Care Res (Hoboken)*. 64(4):475-487.

500 Sreebny LM, Valdini A. 1988. Xerostomia. Part i: Relationship to other oral symptoms and salivary
501 gland hypofunction. *Oral Surg Oral Med Oral Pathol*. 66(4):451-458.

502 Sumney DL, Jordan HV, Englander HR. 1973. The prevalence of root surface caries in selected
503 populations. *J Periodontol*. 44(8):500-504.

504 von Bultzingslowen I, Sollecito TP, Fox PC, Daniels T, Jonsson R, Lockhart PB, Wray D, Brennan
505 MT, Carrozzo M, Gandera B et al. 2007. Salivary dysfunction associated with systemic
506 diseases: Systematic review and clinical management recommendations. *Oral Surg Oral Med*
507 *Oral Pathol Oral Radiol Endod*. 103 Suppl:S57 e51-15.

508

509

510 **Figure Legends**

511

512 **Figure 1.** Gardner-Altman estimation plots reveal significant demographic and clinical differences
513 between low flow and control cohorts. Data for control and low flow cohort patient Swarm plots of a)
514 age, b) UWS-FR, c) DMFS, d) CAL, e) GM-CEJ, f) BOP, and g) PD are plotted on the left-aligned
515 axis. The right-aligned axis displays the point estimate of the unpaired mean difference between
516 groups, surrounded by their 95% confidence intervals (95% CI).

517

518 **Figure 2.** Spatial modeling reveals independent effects of age and patient cohort on the spatial pattern
519 of dental disease. Coefficients with 95% confidence intervals are plotted as a function of universal
520 tooth number for a series of per-tooth linear models where DMFS (a, f, k, p), CAL (b, g, l, q), GM-CEJ
521 (c, h, m, r), BOP (d, i, n, s), and PD (e, j, o, t) were regressed against age, patient cohort, UWS-FR and
522 the interaction between UWS-FR and cohort. Intercepts were calculated, but not visualized for each
523 model. Colors map to different tooth classes. Triangles denote estimates with adjusted p-values < 0.05,
524 while squares denote estimates with adjusted p-values > 0.05. P-values were adjusted by controlling
525 the false discovery rate (FDR) at 5% using the Benjamini-Hochberg (BH).

526

527 **Figure 3.** Subgingival and supragingival communities from 3 control and 3 low flow subjects
528 segregate by UWS-FR while age imperfectly separates supragingival communities. Principal
529 coordinates analysis on Bray Curtis dissimilarity was performed on the combined subgingival and
530 supragingival dataset. The PCoA is displayed as a facet wrap with subgingival and supragingival
531 samples in left and right panels, respectively. a) Communities segregated by UWS-FR along the
532 second coordinate which explained 12.8% of the variance. b) Samples clustered by age for

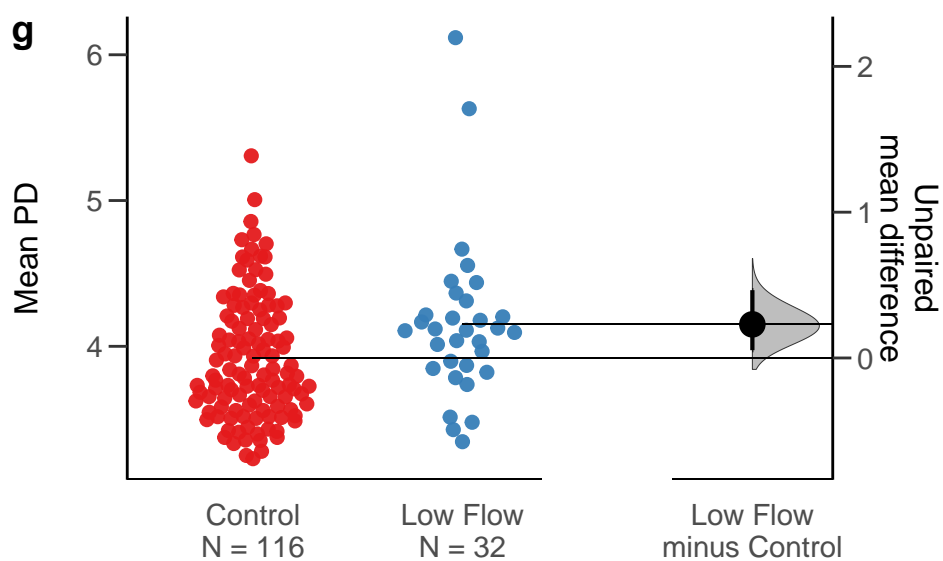
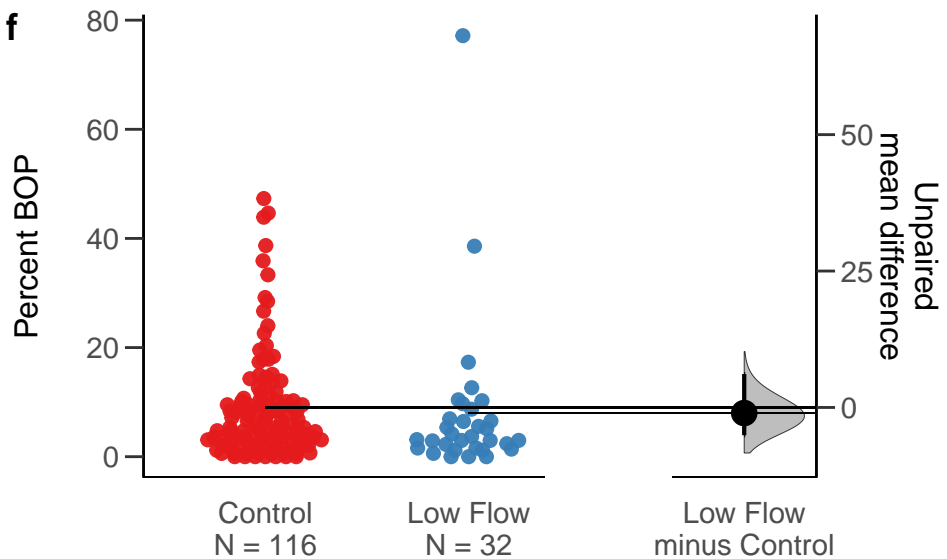
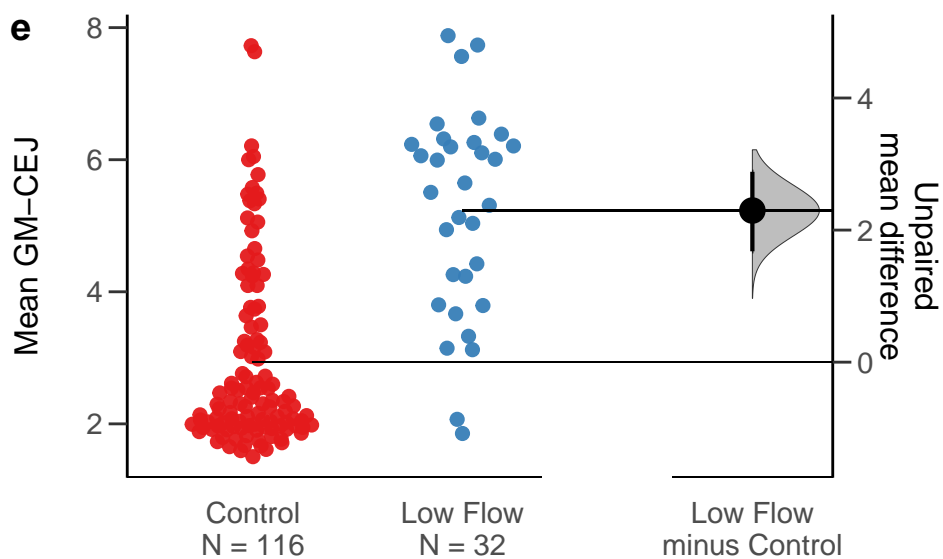
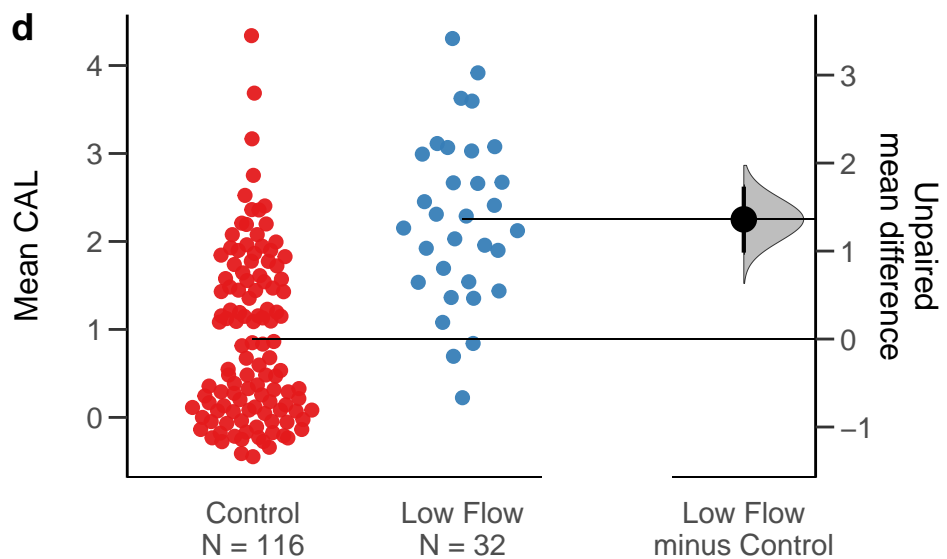
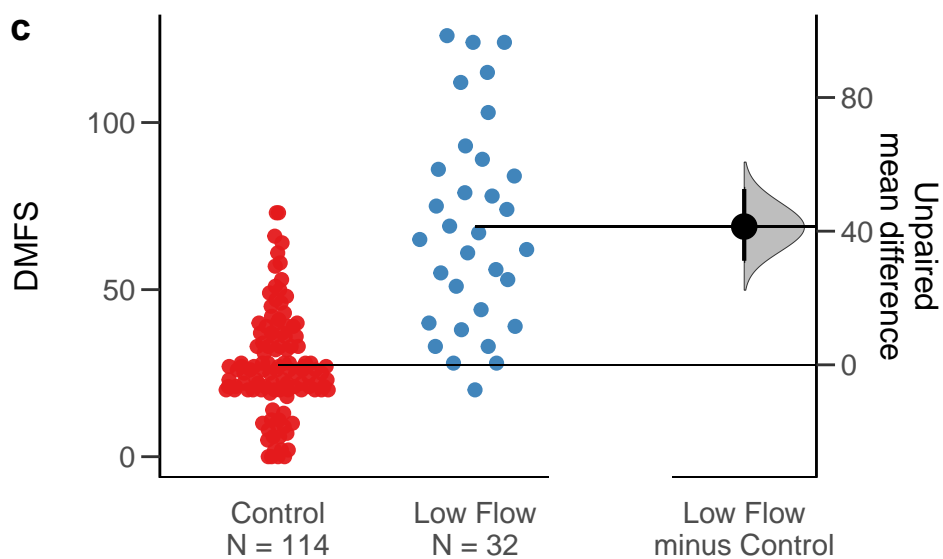
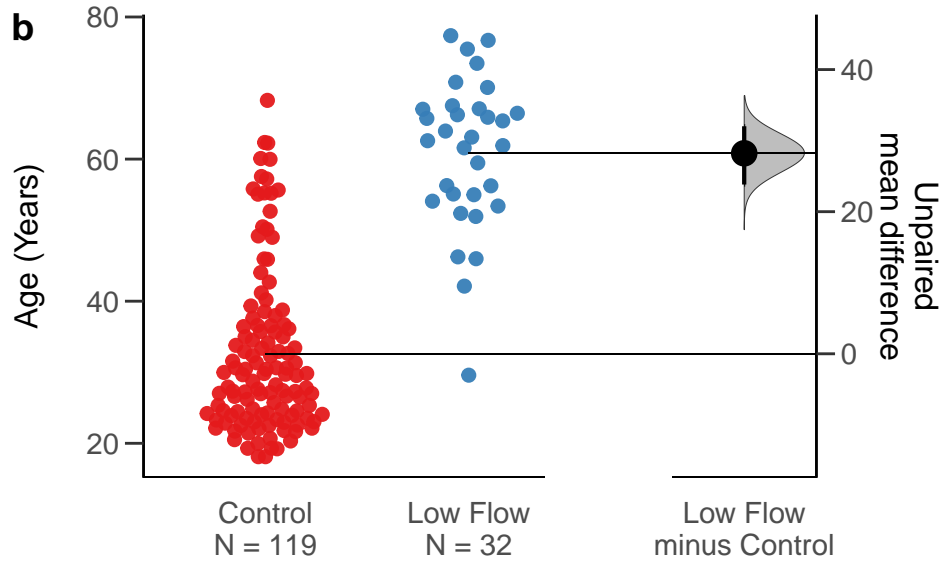
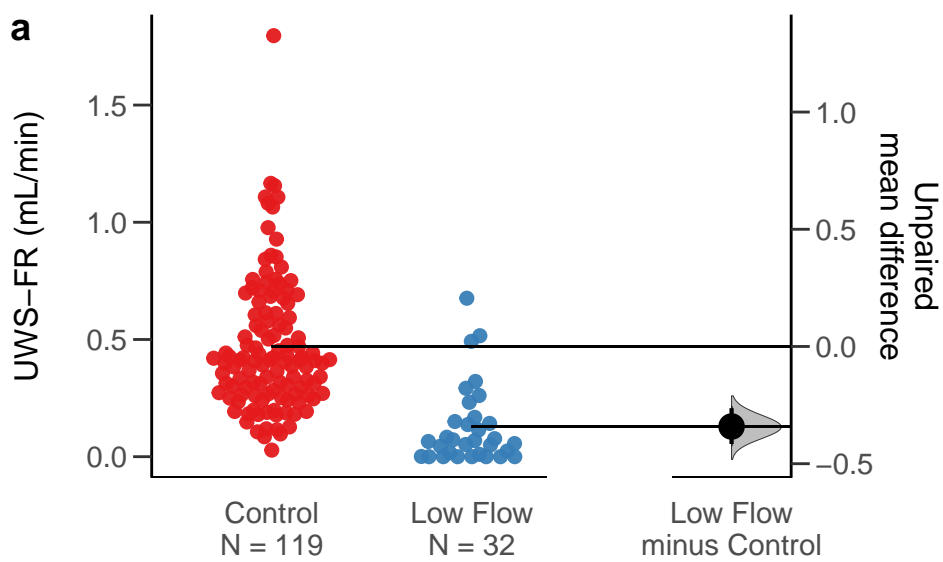
533 subgingival, but not supragingival sites. c) Supragingival communities from sites within low flow
534 subjects with 1 or 2 DMFS segregated from sites with 0 DMFS.

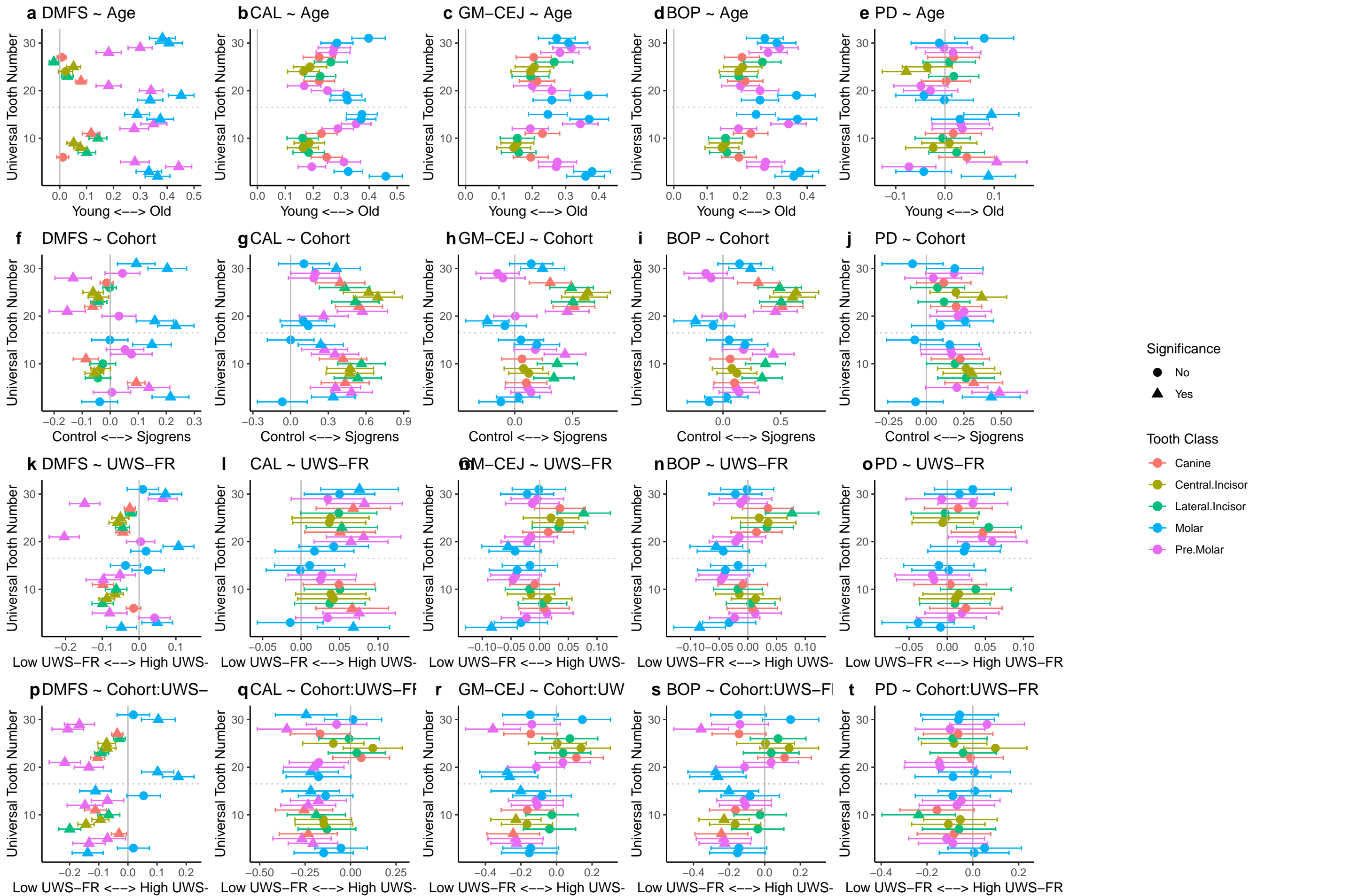
535

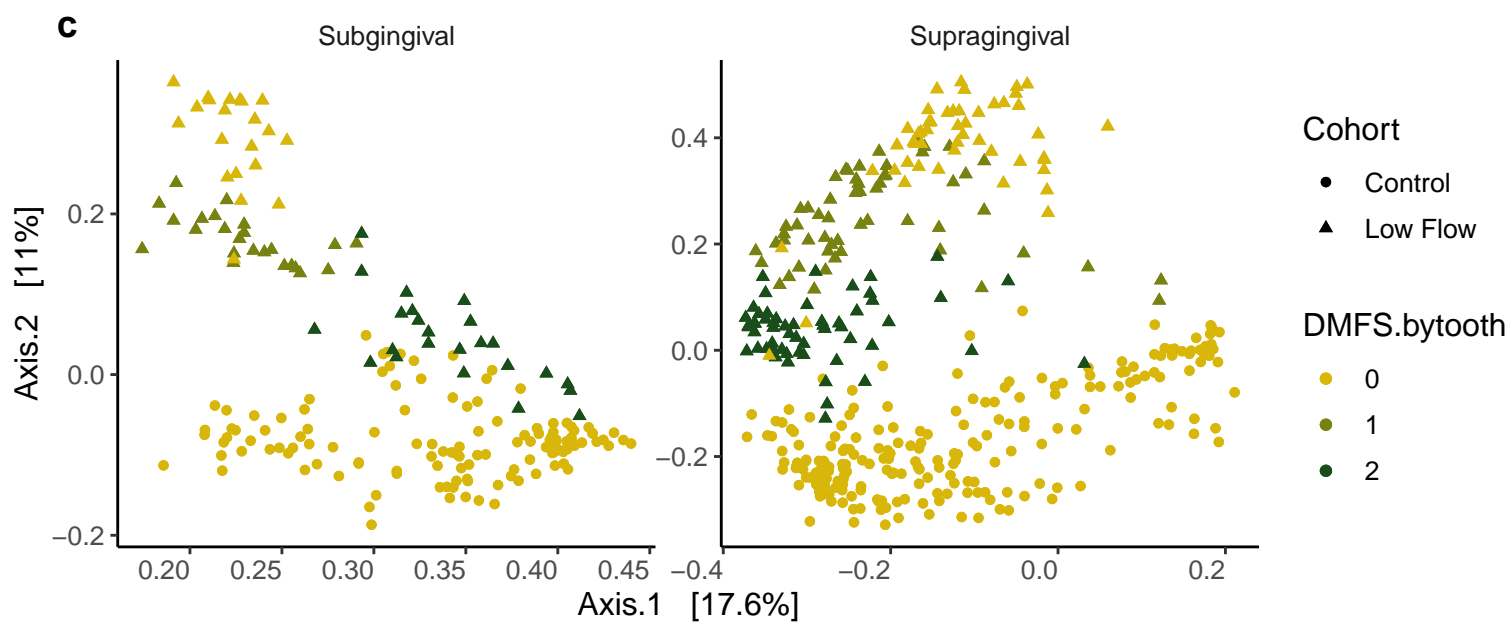
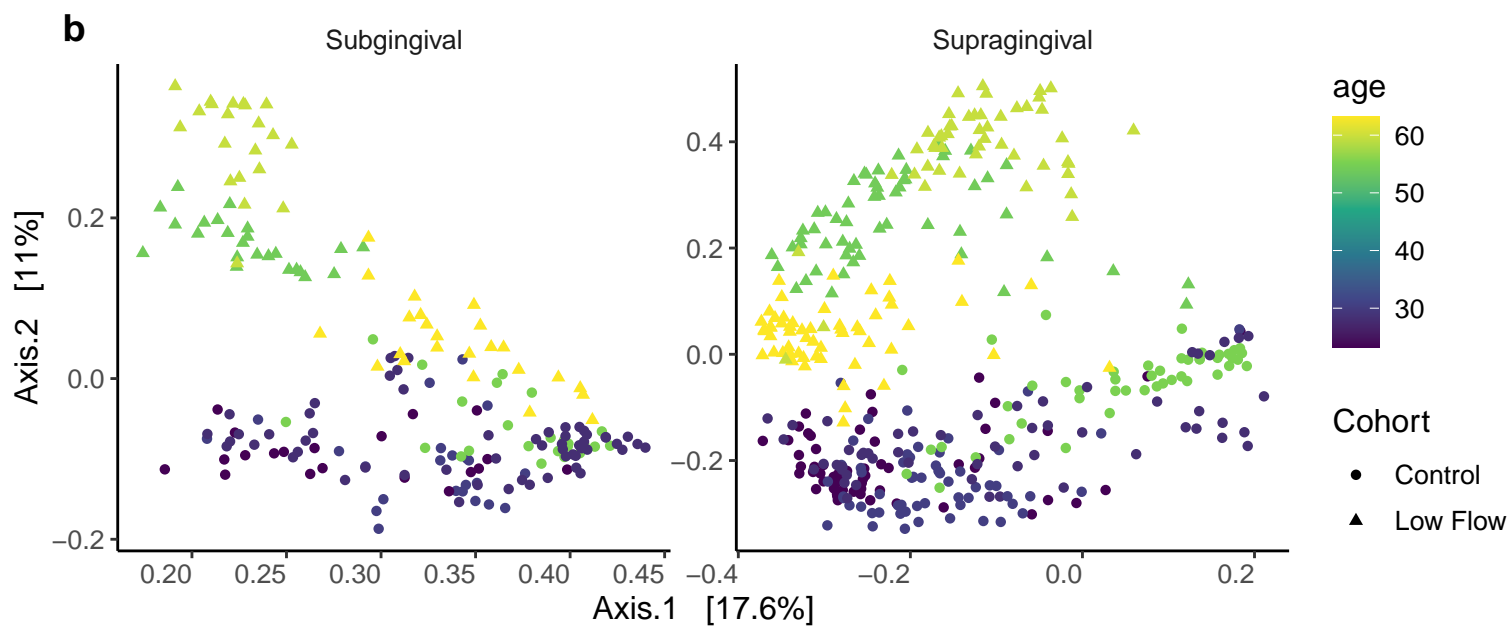
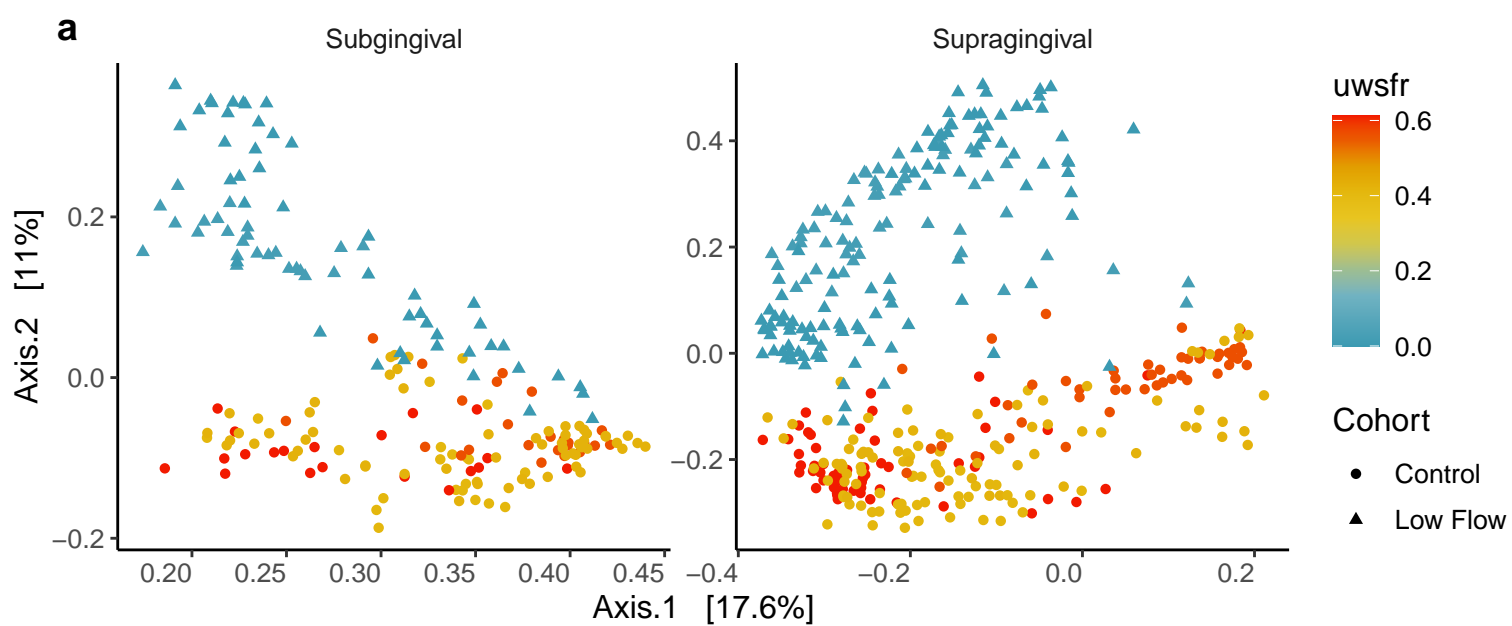
536 **Figure 4.** Estimated migration rates by habitat within each individual. Rates were inferred using the
537 Sloan Community Neutral Model. Each hollow point represents the estimated migration rate for each
538 of the defined metacommunities for each individual, while the solid point represents their average with
539 standard error bars. Colors correspond to patient cohort.

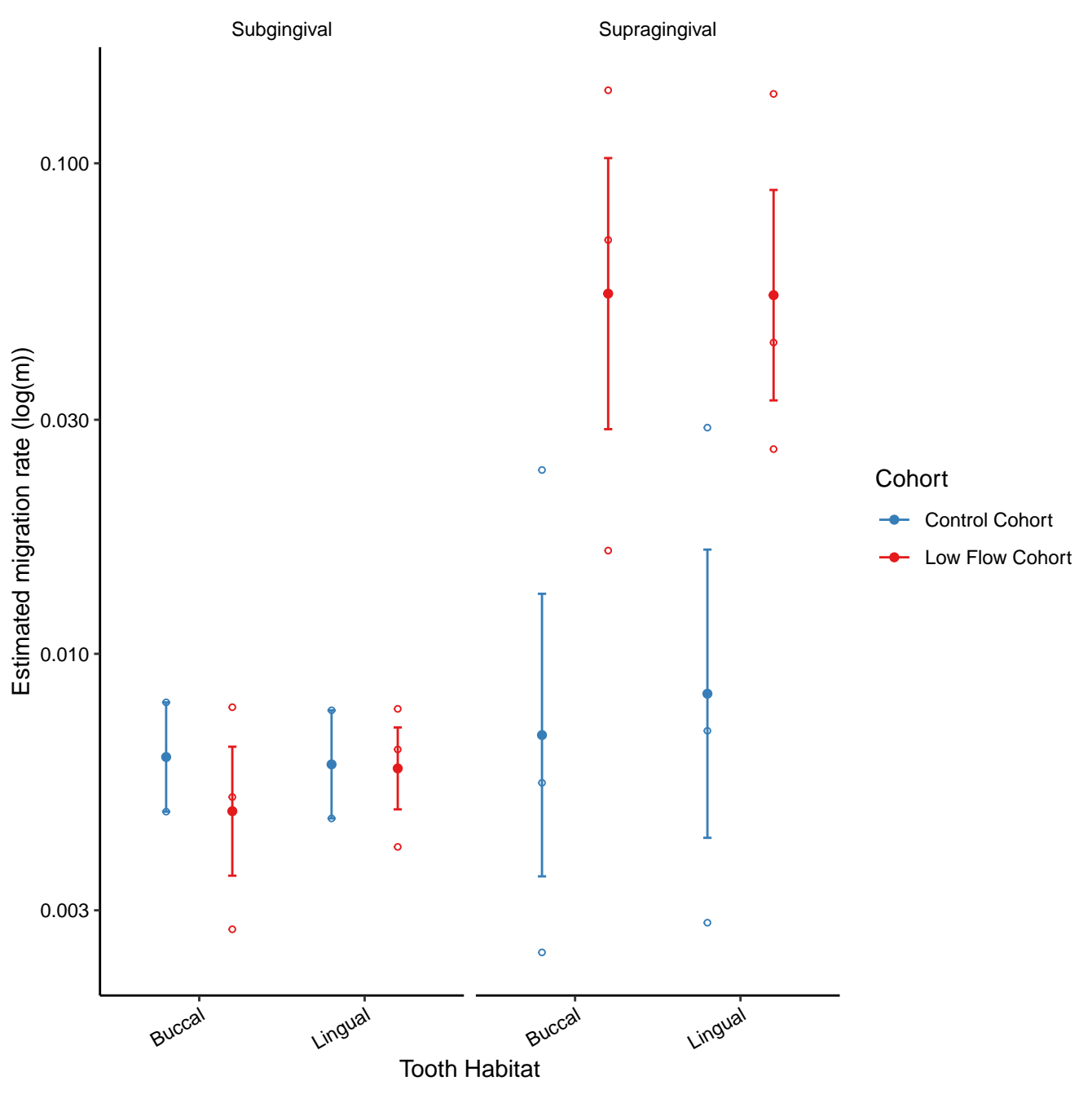
540

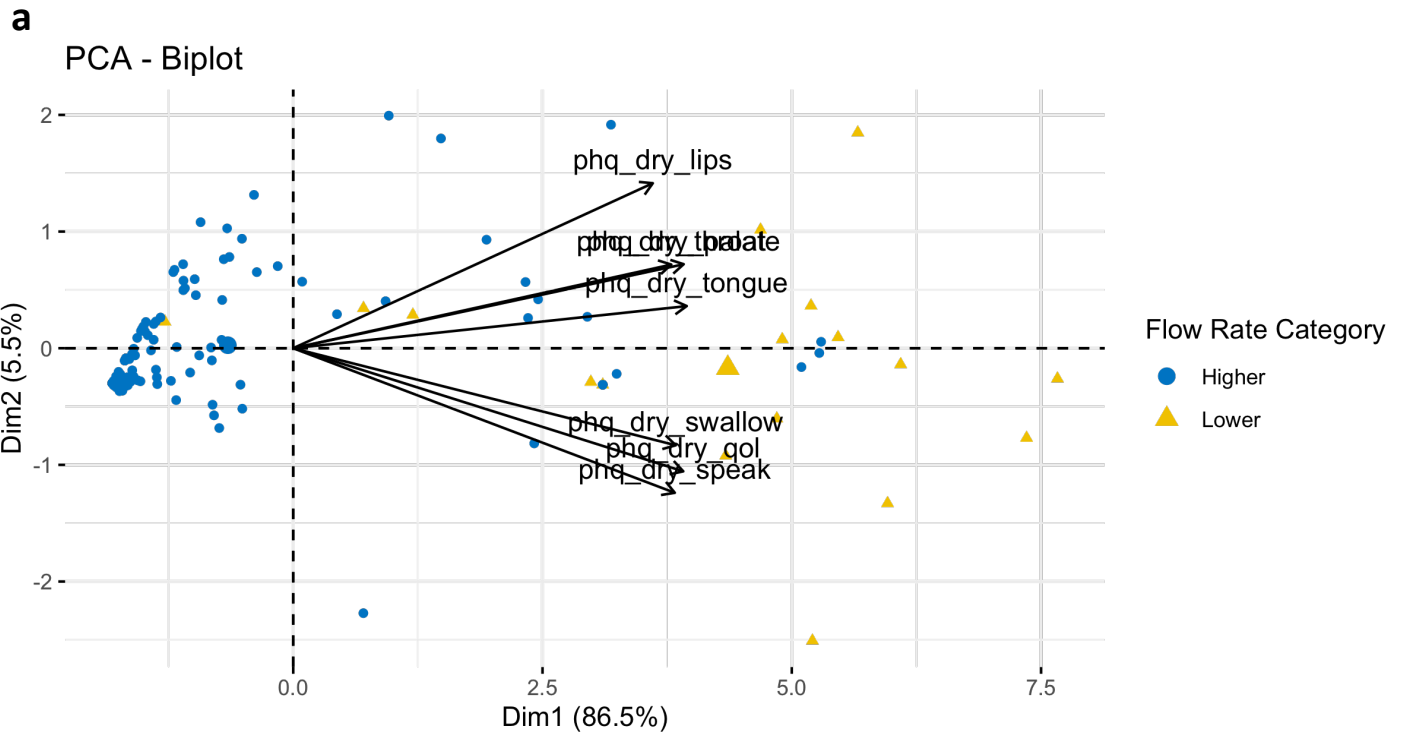
541 **Figure 5.** Symptoms of dry mouth predict low salivary flow. a) Principal component analysis of
542 subject responses to visual analog scale revealed two groups of questions – questions that segregate
543 subjects who complain of impacts to quality of life (dry_speak, dry_qol, dry_swallow) and questions
544 that indicate feelings of dry mouth (dry_tongue, dry_throat, dry_palate, dry_lips). b) Conditional
545 inference tree was used to identify the variables most predictive of separating patients into groups
546 based on low (UWS-FR < 0.1ml/min) and not low (UWS-FR > 0.1 ml/min) subgroups.











b

