

"Epidemiological profile of patients with stage 5 chronic kidney disease on dialysis with Covid 19 infection in a Public Hospital-Perú".

Running title: Chronic kidney disease on dialysis and covid 19 infection

Yanissa.Venegas-Justiniano¹; César.Loza-Munarriz²; Abdías.Hurtado-Aréstegui
1

¹ Nephrology Unit. National Hospital Arzobispo Loayza. Lima-Perú

² Nephrology Unit. National Hospital Cayetano Heredia. Lima-Perú

Corresponding autor: Yanissa.Venegas-Justiniano

Email: joanna.venegas.j@upch.pe

Indication of authors' contribution: Yanissa Venegas, design,study development, data collection, analysis and writing of the article. Cesar Loza stadistic analysis, interpretation,critical review and approval of the final versión. Abdías Hurtado critical review and approval of the final versión.

ABSTRACT

Introduction: Chronic kidney disease (CKD) in Covid 19 is relevant, however, there are few descriptions and fewer in Peru. Our goal was to describe the epidemiological profile and the factors related to mortality and survival of patients with stage 5 (CKD) on chronic dialysis hospitalized for Covid-19 in a public hospital.

Methods: Retrospective case series. Patients with stage 5 CKD, older than 18 years, hospitalized for Covid-19 infection were included. The primary data source was medical records. The clinical and epidemiological profile of the study sample and the factors related to mortality and survival are described.

Results: 105 medical records of patients with CKD 5 were evaluated. 57 (54,29%) were male, with a mean age of $58,59 \pm 14,3$ years. 84 (80%) patients survived and 21 (20%) died. The main cause of admission to hospitalization was respiratory failure in (80) 76,2%. The hospital stay was $11,76 \pm 7,8$ days. In the bivariate analysis: the increase in leukocytes, D dimer, ferritin, CRP, LDH and the decrease in lymphocytes, pH, bicarbonate and $\text{PaO}_2/\text{FiO}_2$ were related to mortality. In the multivariate analysis, only $\text{CRP} > 10$ mg/dl [HR: 10.72 (95% CI 1,4-81,58)] and a $\text{PaO}_2/\text{FiO}_2 \leq 150$ mmHg [HR: 44,40 (95% CI 5,86-336,06)] they were factors related to poor survival.

Conclusions: CRP levels > 10 mg/dl and $\text{PaO}_2/\text{FiO}_2 \leq 150$ mmHg are the main factors related to mortality and poor survival in patients with stage 5 CKD hospitalized for Covid-19.

Keywords: Renal Insufficiency, renal dialysis, Coronavirus infections, Covid- 19, survival. (MeSH)

INTRODUCTION

The World Health Organization (WHO) declared a pandemic to the infection for coronavirus 19 (COVID-19) in March 2020, initially this was identified in a group of patients with respiratory compromise in December 2019 in Wuhan. The infection spread quickly in Asia, Europe and the rest of the continents, in Peru, the first case was identified in March 6 of 2020 and to date numerous cases and a high mortality rate have been reported, putting it in the fifth most affected country in Latin America¹⁻⁷.

According to reports, the infection is more frequent in the elderly population, men, comorbidities like diabetes mellitus and other immunosuppression conditions. The clinic presentation is known by sustained fever, lymphopenia, hyperferritinemia, pulmonary involvement in more than 50% of cases and other findings in relation to increased interleukins⁸⁻¹².

Chronic kidney disease (CKD) characterized by the progressive loss of renal function, it has a progressive increase in frequency and the need of replacement therapy in any of its modalities is increasingly demanding². The population with CKD both in pre-dialysis and renal replacement therapy, as well as in renal transplant recipients have multiple comorbidities associated with higher mortality during COVID-19 infection. It is known that the immune response of the chronic renal patient is diminished with less possibility of presenting cytokine storm, which explains why some series show a low percentage of severe manifestations. However, it should be considered that the chronic state of these patients, associated comorbidities, nutritional level and hospital admissions make them more prone to severe respiratory infections¹²⁻¹⁵.

Up to now, existing studies show different findings, some of them include that hemodialysis patients with COVID-19 experiment a minor illness with mild pneumonia, associated with a reduced immune response and decreased cytokine storm^{15,16}. On the contrary, other series report a mortality of 28% in patients on hemodialysis, with hospital admission and severe clinical manifestations¹⁷. The most important finding is the fact that factors such as advanced age, diabetes, cardiovascular disease, pulmonary disease, and a less efficient immune system with the need for dialysis treatment in overcrowded environments, together with years of dialysis, lead to an increase in the prevalence and mortality rate¹⁸⁻²¹.

In Latin America and Peru, little has been described about the burden of Covid 19 infection in hospitalized patients with stage 5 chronic kidney disease on dialysis; characteristics, behavior, evolution and complications, these data are important to optimize care strategies and clinical outcomes.

The main objective of the study is to describe the epidemiological and clinical characteristics and factors related to mortality and survival of patients with stage 5 in chronic kidney disease on dialysis with Covid 19 infection in a public hospital in Lima-Peru.

METHODS

The present study is a retrospective case series, conducted at the National Hospital Arzobispo Loayza (HNAL). Lima-Peru, between April and December 2020. The study population was selected by non-probabilistic sampling; hospitalized patients with stage 5 CKD on renal replacement therapy (RRT) and Covid-19 infection were evaluated.

Inclusion criteria were hospitalized patients older than 18 years, patients with stage 5 CKD in a chronic hemodialysis or chronic peritoneal dialysis program, renal transplant patients with functioning kidney; clinical diagnosis of Covid-19 infection by their treating physician and/or diagnosis of Covid-19 in the discharge summary. Exclusion criteria were patients with a diagnosis of Acute Kidney Injury (AKI), episode of AKI superadded to CKD and incomplete data in the clinical history records, database, or laboratory record. All were new cases of Covid 19.

During the study period, 107 patients with a diagnosis of stage 5 CKD and COVID 19 infection were registered; 105 met the inclusion criteria. The primary source of data was the medical records of each patient, and the data were recorded retrospectively, assigning sequential numbering, evaluated only by the investigator.

The independent variables considered for the study were: Age, sex, BMI, hypertensive and non-hypertensive etiology of CKD, symptomatologic profile on admission, smoking history, cause of hospitalization, comorbidities (Charlson Score), inflammatory parameters (CRP, ferritin, D-dimer, DHL, lymphocyte and leukocyte counts), blood gas values (pH, bicarbonate, pO₂ and PaO₂/FiO₂), urea, creatinine, type of vascular access, hospital stay, renal replacement therapy (RRT) modality: chronic hemodialysis (HDC) or

chronic peritoneal dialysis (CPD) and associated complications to COVID-19. Dependent variables were high vital status and survival time.

Ethical Aspects

The Institutional Ethics and Research Committee of the Cayetano Heredia Peruvian University approved the study under the number 039-01-21 and since it is a retrospective study, it is exempt from informed consent.

Statistical analysis

Descriptive statistics: Descriptive statistics were used to describe numerical variables with means \pm SD for variables with normal distribution and with medians and interquartile range (IQR) for variables without normal distribution. Categorical variables were described in proportions (%). We report the crude mortality rate and frequency tables that include clinical and demographic characteristics, laboratory alterations and variables related to hospitalization, treatments, and complications of patients with stage 5 CKD on dialysis and Covid 19 infection. A survival analysis is realized presenting the curve and the general survival table of the study sample.

Inferential Statistics: Bivariate analysis was performed to compare clinical and demographic characteristics and laboratory data between survivors and deceased. Variables with a $p \leq 0.2$ were selected to be evaluated in the multivariable model. To compare categorical variables or proportions, the “Chi2 exact” test was used. To compare two means of independent samples with normal distribution, the "ttest" (Student's t-test) was used and to compare two means of independent samples without normal distribution, the "Wilcoxon rank sum" test was used. To compare more than two means for data with normal distribution, ANOVA and/or One-way was used.

The tables and the overall survival curve of patients with stage 5 CKD on dialysis and Covid-19 infection in the study period were obtained. Survival by groups was also described. The survival curves were compared with the Log Rank test. To evaluate the variables that were independently related to the overall survival of CKD stage 5 patients and Covid 19 infection, a multivariate analysis was performed with Cox regression using the Hazard Ratio (HR). The data were analyzed with State vs. 17 software. For the analysis, $p \leq 0.05$ was considered statistically significant.

RESULTS

In the study period were evaluated 105 patients with a diagnosis of stage 5 CKD and Covid-19 infection, the average age was 58.59 ± 14.3 years, 57 (54.29%) patients were male, respiratory failure 80 (76.2%) was the main cause of hospitalization; the most frequent etiology of CKD was arterial hypertension in 57 (54.28%) patients and diabetic nephropathy in 26 (24.76%); the hospital stay was reported as 11.76 ± 7.8 days (**Table 1**).

The admission modality was as new in 40 (38.1%) and readmission in 65 (61.9%); pulmonary congestion 46 (43.81%), hyperkalemia 40 (38.1%), metabolic acidosis 12 (11.43%) and uremic encephalopathy 5 (4.76%) were the most frequent indications for dialysis; mostly received hemodialysis in 104 (99.04%) and only 1 (0.96%) peritoneal dialysis; the initial vascular access was a temporary central venous catheter 51 (48.57%), tunelled catheter 34 (32.38%) and 20 (19.05%) arteriovenous fistula; when evaluating the oxygen requirement 46 (43.81%) needed a oxygen mask and 39 (37.14%) a binasal cannula, an average BMI of 24.3 ± 3.87 was reported.

In the bivariate analysis, the increase in leukocytes, D-dimer, ferritin, CRP, LDH, as well as the decrease in pH, bicarbonate, lymphocytes and $\text{PaO}_2/\text{FiO}_2$, were related to higher mortality (**Table 2 and 3**).

An exploratory analysis was performed by recategorizing the variables related to inflammation and the oxygen status of the patients evaluated, establishing new critical cut-off points. Increased leukocytes >11000 [HR: 3.8 (1.2-15.12); $p=0.012$], lymphocytes <1000 [HR: 5.21 (1.21-22.45); $p=0.027$], D-dimer > 1.5 [HR: 2.87 (1.11-7.42); $p=0.029$], ferritin >1000 [HR: 3.05 (1.22-7.06); $p=0.001$], CRP >10 [HR: 27.73 (3.71-30.83), $p=0.001$], LDHL >400 [HR: 23.32 (3.12-174.07); $p=0.002$], bicarbonate ≤ 20 [HR: 7.58 (2.53-22.69); $p=0.001$], and $\text{PaO}_2/\text{FiO}_2 < 150$ [HR: 38.01(8.83-163.49); $p=0.001$], were associated with increased mortality (**Table 4**).

Overall survival of patients at 10 and 20 days was 86.9% and 65.3%.

In multivariate analysis only CRP >10 [HR: 10.72 (95%CI 1.4-81.58), $p=0.02$] and $\text{PaO}_2/\text{FiO}_2 \leq 150$ [HR: 44.40 (95%CI 5.86-336.06), $p=0.000$] were associated with lower survival (**Table 5, Figure 1 and 2**).

DISCUSSION

It is known that the prevalence of CKD has increased in recent years in relation to the aging of the population and due to the increased prevalence of diabetes mellitus and hypertension. According to 2015 data from the Ministry of Health of Perú, kidney disease (chronic and acute) ranks seventh among the main specific causes of general mortality, with 3.3% of the total, with diabetes mellitus and arterial hypertension being the etiologies responsible for approximately 70% of the cases of Kidney Disease at the national level. Among the causes of mortality in RRT patients, the most significant were those of infectious and cardiovascular origin ²². In the context of the current Covid-19 pandemic, the population of patients with stage 5 CKD in RRT also became a vulnerable population, presenting mild, moderate, and severe infection, with the need for hospitalization, requiring admission to the Intensive Care Unit (ICU) with an increase in mortality ^{4,22}.

In the present study most of the patients were male 54.29% and among the comorbidities: arterial hypertension and diabetes mellitus were the most representative with 97.14% and 23.8% of the cases respectively, similar characteristics to the general population and the population of patients with CKD infected by the Covid-19 virus ^{9,10,13}. The main cause of admission to hospitalization was respiratory failure 76.2%, requiring oxygen support in more than 80.95% of patients in the modality of reservoir mask and binasal cannula, data similar to other series ^{15,22-25}. Furthermore, Cai et al ²⁵ report that between 6 - 15.5% of patients with CKD are admitted to the ICU, which differs from the present study since no patient was admitted to the ICU ^{15, 22-25}. In relation to BMI, there is a direct association between obesity and greater risk of Covid 19 infection. In the present series, the percentage of overweight was 30.48% and obesity 7.1%, lower than that reported and with no relation to mortality, this is explained because in our population on chronic dialysis obesity is less prevalent than in the general population ^{15, 18, 26-28}.

The main causes of CKD were arterial hypertension and diabetes mellitus, as described in national and international reports, and the indication for dialysis support was pulmonary congestion, hyperkalemia and metabolic acidosis ^{15,22-27}, in this context, given that the symptomatic patient needed hospitalization, the time lapse between case identification, diagnosis and hospitalization was a few days, during which time the patient

could receive irregular hemodialysis in outsourced centers until access to in-center dialysis, leading to manifestations of sub-dialysis and the need for emergency dialysis.

Mortality in CKD secondary to pulmonary infections in general is 51.9% and this varies according to increasing age ^{18,24,27-30}, there is evidence of reports such as that of Yang et al ¹⁹ on mortality in CKD infected by COVID19 which ranges between 6% and 22.7%; also in Perú a study reports up to 46% mortality ³¹; in our research a mortality of 20% was obtained, which correlates with the aforementioned.

The baseline Charlson index, which relates long-term mortality to the patient's comorbidity, was evaluated; at the beginning of hospitalization, it was 3.85 ± 1.18 with a 10-year survival of 53.62%, taking into account that the survival rates found 20 and 30 days after hospitalization for Covid 19 infection were 65.3% and 56% respectively, it can be seen that the probability of survival decreases with hospitalization, as also reported by Savino et al ^{28,30-32}.

There is evidence that the factors related to greater mortality are age, male sex, comorbidities such as arterial hypertension, diabetes mellitus and obesity, inflammatory markers, and respiratory compromise ²⁵⁻³², in the present investigation as well as in a Spanish study, no relationship was found with age, sex and comorbidities ³³.

The severity of Covid-19 infection has not been evaluated, but it is implicitly considered that a patient hospitalized with Covid-19 is generally considered a severe infection, therefore, our study sample is made up of patients with stage 5 CKD with multiple comorbidities in addition to severe Covid-19 infection, conditions that make them a vulnerable population with high mortality.

Regarding laboratory markers, there are reports of the relationship between increased leukocytes, CRP, LDH, ferritin, D-dimer and decreased lymphocytes with mortality, data that relate the exaggerated inflammatory response in patients with Covid-19 with increased mortality, such findings are congruent with our findings ³⁰⁻³³, in relation to the gasometrical characteristics it is described that $\text{SatO}_2 < 90\%$ persistent despite increased oxygen support, $\text{pO}_2 < 68$ mmHg and decreased pO_2/FiO_2 are related to higher mortality in the context of the severity of respiratory compromise ³⁴, in this series it was found that most patients needed oxygen support and showed a significantly decreased $\text{PaO}_2/\text{FiO}_2$.

In our study the increase in inflammatory markers and indicators of oxygen status, over their values conventionally established as normal were related to mortality only in the bivariate analysis; but when categorizing these variables by establishing higher cut-off points they showed a strong relationship with a lower survival, but the variables with the greatest impact that were related to a reduction in survival were CRP values >10 mg/dl [HR: 10.72 (1.4 - 81.58) $p = 0.02$] and $\text{PaO}_2/\text{FiO}_2$ values <150 mmHg [HR: 44.70 (5.86 - 336.06) $p = 0.000$], the latter also described by Wang et al ³⁴. The final results reflect that the important component related to Covid-19 mortality in hospitalized patients with CKD on chronic dialysis is the inflammatory and oxygen component.

The main limitations of the study lie in the type of design; it is a retrospective case series whose primary source of data is the hospital medical records, which implicitly may entail a series of errors in the validity and reliability of the data recorded. The biochemical and blood gas variables were processed by the hospital laboratory; they could also have a great intrinsic variability of the values since the variability of the observers and of the equipment used to process the blood samples is unknown.

CONCLUSION

CRP levels >10 mg/dl and $\text{PaO}_2/\text{FiO}_2 \leq 150$ mmHg are the main factors related to mortality and lower survival in patients with stage 5 CKD hospitalized for Covid-19.

DISCLOSURE

All the authors declared no competing interests.

FUNDING

Self-financing

REFERENCES

1. Roper T, Kumar N, Lewis-Morris T, Moxham V, Kassimatis T, Game D et al Delivering Dialysis During the COVID-19 Outbreak: Strategies and Outcomes. *Kidney International Reports*. 2020; 5(7): 1090–1094
2. Sarnak M, Jaber B. Mortality caused by sepsis in patients with end-stage renal disease compared with the general population. *Kidney International*. 2020; 58(4):1758–1764.
3. Verma A, Patel A, Tio M, Weikar S. Caring for Dialysis Patients in a Time of COVID-19. *Kidney Med*. 2020; 2(6):787-792
4. Ajaimy M, Melamed M. COVID-19 in Patients with Kidney Disease. *CJASN*. 2020; 15 (8) 1087-1089
5. Alberici F, Delbarba E, Manenti C, Econimo L, Valerio F, Pola A. Management of Patients on Dialysis and With Kidney Transplantation During the SARS-CoV-2 (COVID-19) Pandemic in Brescia, Italy. *Kidney Int Rep*.2020; 5(5): 580–585
6. Huang C, Wang Y, Li X, Ren L, Zhao J, Hu Y. Clinical features of patients infected with 2019 novel coronavirus in Wuhan, China. *Lancet*. 2020; 395:497–506.
7. Robinson B, Guedes M, Alghonaim M, Cases A, Dasgupta I, Gan L, et al. Worldwide Early Impact of COVID-19 on Dialysis Patients and Staff and Lessons Learned: A DOPPS Roundtable Discussion. *Kidney Med*. 2021;3(4):619-634
8. Hamid Rabb. Kidney diseases in the time of COVID-19: major challenges to patient care. *J Clin Invest*. 2020; 130(6):2749–2751
9. Hsu C, Weiner D. COVID-19 in dialysis patients: outlasting and outsmarting a pandemic. *Kidney International*.2020;98(6):1402–1404
10. UK renal registry. UK Renal Registry (2020) Weekly COVID-19 Surveillance Report For Renal Centres in the UK; London – up to 22 April 2020. Bristol, UK: The Renal Association; 2020. [Access in 2021 Jul 30]. Available from: https://ukkidney.org/sites/renal.org/files/ALL_REGIONS_CENTRES_covid_report_01072020.
11. American Society of Nephrology. Nephrologists Transforming Dialysis Safety (NTDS), coronavirus disease 2019. 2020. [Access in 2021 Jul 29]. Available at: <https://www.asn.org/ntds/>.

12. Mokrzycki MH, Coco M. Management of hemodialysis patients with suspected or confirmed COVID-19 infection: perspective of two nephrologists in the United States. *Kidney360*. 2020; 1(4):273-278.
13. Alberici F, Delbarba E, Manenti C, Econimo L, Valerio F, Pola A et al. A report from the Brescia Renal COVID Task Force on the clinical characteristics and short-term outcome of hemodialysis patients with SARS-CoV-2 infection. *Kidney Int*. 2020; 98(1):20-26.
14. Fisher M, Yunes M, Mokrzycki MH, Golestaneh L, Alahiri E, Coco M. Chronic hemodialysis patients hospitalized with COVID-19: short-term outcomes in the Bronx, New York. *Kidney360*. 2020; 1:755-762.
15. Ozturk S, Turgutalp K, Arici M, Odabas A, Altiparmak M, Aydin Z et al. Mortality analysis of COVID-19 infection in chronic kidney disease, haemodialysis and renal transplant patients compared with patients without kidney disease: a nationwide analysis from Turkey. *Nephrol Dial Transplant*. 2020; 35(12): 2083–2095.
16. Yiqiong Ma, Bo Diao, Xifeng Lv, Wei Liang, Jili Zhu, Lei Liu, et al. 2019 novel coronavirus disease in hemodialysis (HD) patients: Report from one HD center in Wuhan, China. *medRxiv*. 2020. <https://doi.org/10.1101/2020.02.24.20027201>
17. Rombolà G, Brunini F. COVID-19 and dialysis: why we should be worried. *J Nephrol*. 2020; 22:1-3.
18. Corbett R, Blakey S, Nitsch D, Loucaidou M, McLean A, Duncan N, et al. Epidemiology of COVID-19 in an urban dialysis center. *J Am Soc Nephrol*. 2020; 31(8):1815-1823.
19. Yang D, Xiao Y, Chen J, Chen Y, Luo P, Liu Q et al. COVID-19 and chronic renal disease: clinical characteristics and prognosis. *An International Journal of Medicine*. 2020;113(11): 799–805
20. Wu J, Li J, Zhu G, Zhang Y, Bi Z, Yu Y et al. Clinical Features of Maintenance Hemodialysis Patients with 2019 Novel Coronavirus-Infected Pneumonia in Wuhan, China. *Clin J Am Soc Nephrol*. 2020; 15(8): 1139–1145.
21. Pio-Abreu A, Mazza do Nascimento M, Vieira M, Miranda de Menezes D, Lugon J, Sesso R. High mortality of CKD patients

- on hemodialysis with Covid-19 in Brazil. *Journal of Nephrology* .2020;33:875-877
22. Analysis of the Situation of Chronic Kidney Disease in Peru. General Office of Epidemiology. Peru department of health. 2015: 1-96.
 23. DorjeeI K, Kim H, BonomoI E, Rinchen D. Prevalence and predictors of death and severe disease in patients hospitalized due to COVID-19: A comprehensive systematic review and meta-analysis of 77 studies and 38,000 patients. *PLoS ONE* 2020; 15(12):2-27.
 24. Mirjalili H, Dastgheib S, Shaker S, Bahrami R, Mazaheri M, Mohamad S et al. Proportion and mortality of Iranian diabetes mellitus, chronic kidney disease, hypertension and cardiovascular disease patients with COVID-19: a meta-analysis. *J Diabetes Metab Disord.*2021; 20(1): 905–917
 25. Ruyi Cai, Jinshi Zhang, Yifan Zhu, Lin Liu, Yueming Liu, Qiang He. Mortality in chronic kidney disease patients with COVID-19: a systematic review and meta-analysis. *Int Urol Nephrol.* 2020; 53(8): 1623–1629.
 26. Pakhchanian H, Raiker R, Mukherjee A, Khan A, Singh S, Chatterjee A. Outcomes of COVID-19 in CKD Patients A Multicenter Electronic Medical Record Cohort Study. *Clin J Am Soc Nephrol* 2021 May 8;16(5):785-786.
 27. Brandon M and Lippi G. Chronic kidney disease is associated with severe coronavirus disease 2019 (COVID-19) infection. *Int Urol Nephrol* 2020 Jun;52(6):1193-1194.
 28. Sosa R , Garcia P , Cipriano E , Hernández A , Hernández E , Chavez P. Coronavirus Disease 2019 in Patients With End-Stage Kidney Disease on Hemodialysis in Guatemala. *Kidney Int Rep* .2021; 6:1110–1117.
 29. Hilbrands L, Duivenvoorden R, Vart P, Franssen C, Hemmelder M, Jager K et al. COVID-19-related mortality in kidney transplant and dialysis patients: results of the ERACODA collaboration. *Nephrol Dial Transplant.* 2020; 35(11): 1973–1983.
 30. Jager K, Kramer A, Chesnaye N, Couchoud C, Sánchez-Álvarez E, Garneata L et al. Results from the ERA-EDTA Registry indicate a high mortality due to COVID-19 in dialysis patients and kidney transplant recipients across Europe. *Kidney International.* 2020; 98 (6):1540-1548.

31. Vences M, Pareja-Ramos J, Otero P, Veramendi-Espinoza L, Vega-Villafana M, Mogollón-Lavi J et al. Factores asociados a mortalidad en pacientes hospitalizados con COVID-19: cohorte prospectiva en un hospital de referencia nacional de Perú. *Medwave*. 2021;21:e823.
32. Savino I M, Casula A, Santhakumaran S, Pitcher D, Wong E, Magadi W et al. Sociodemographic features and mortality of individuals on haemodialysis treatment who test positive for SARS-CoV-2: A UK Renal Registry data analysis. *PLoS ONE*. 2020 15(10):1-8
33. Goicoechea M, Sánchez Cámara L, Macías N, Muñoz de Morales A, González A, Bascuñana A et al. COVID-19: clinical course and outcomes of 36 hemodialysis patients in Spain. *Kidney international*. 2020;98(1):27-34.
34. Wang D; Hu B; Hu Ch; Zhu F; Liu X; Zhang J. Clinical Characteristics of 138 Hospitalized Patients With 2019 Novel Coronavirus-Infected Pneumonia in Wuhan, China. *JAMA*. 2020;323(11):1061-1069.

TABLES AND FIGURES

Table 1: General characteristic of the CKD5 dialysis and Covid 19 patients admitted to hospitalization.(n=105)

Characteristic	N°	%
Male	57	54.29
Age	58.59±14.3	
CKD etiology		
Nephroangiosclerosis	57	54.28
Diabetic nephropathy	26	24.77
Unknown	16	15.25
Obstructive uropathy	3	2.85
Others	3	2.85
Cause of hospitalization		
Respiratory Insufficiency	80	76.2
Acid-base disorder/electrolytes	11	10.47
Severe anemia	5	4.76
Sensory disorder	4	3.81
Other	5	4.76
Comorbidities		
Arterial hypertension	102	97.14
Diabetes mellitus	25	23.8
Obesity	8	7.61
Obstructive uropathy	6	5.71
Hypothyroidism	4	3.81
Others	6	5.71
Income Symptom		
Dyspnoea	70	66.67
General discomfort	13	12.38
Fever	12	11.42
Other	14	11.42
BMI		
Underweight	1	0.95
Normal	64	60.96
Overweight	32	30.98
Obese	8	7.61
Death	21	20
Hospital stay duration(days)	11.76±7.8	
Charlson Index		
2	26	25.49
3	9	8.82
4	37	36.27
5	22	21.57
6	8	7.84

BMI: body mass index; CKD5: chronic kidney disease stage 5

Table 2: General characteristic of the CKD5 dialysis and Covid 19 patients admitted to hospitalization by discharge condition.

Variable	Alive		Deceased		<i>p</i>
	n	%	n	%	
N°	84	80	21	20	
Age	57.65±14.47		63.5±13.24		0.19
Sex					
Female	39	82.98	8	17.02	0.65
Male	45	77.59	13	22.41	
Modality of admission					
New	31	77.5	9	22.5	0.64
Follower	53	81.54	12	18.46	
Smoker					
No	43	76.79	13	23.21	0.354
Yes	3	60	2	40	0.258
Former smoker	38	86.37	6	13.63	0.154
CKD etiology					
HTA	44	78.58	12	21.42	0.66
no HTA	40	81.64	9	18.36	
BMI	24.57±2.9		24.29±3.65		0.7
Hospital stay (days)	13±7.63		9±6.74		0.01

Table 3: Laboratory characteristic of the CKD5 dialysis and Covid 19 patients admitted to hospitalization by discharge condition.

Variable	Alive	Deceased	p
Creatinine mg/dL	7.22±1.07	7.38±1.37	0.57
Urea mg/dL	159.63±28.25	174±38.73	0.06
Leukocytes cell count x uL	11058.71±3798.79	19731.43±3767.19	<0.001
Lymphocytes cell count x uL	1075.32±651.38	582±504.53	<0.001
Platelets cell count x uL	296123.81±150833.54	323476.19±152799.42	0.26
INR	1.34±0.77	1.15±0.19	0.63
D-dimer mg/L	2.64±4.65	5.96±12.13	0,01
Ferritina mg/dL	976.57±470.87	1489.33±545.65	<0.001
CRP mg/dL	9.41±5.06	23.58±10.13	<0.001
LDH U/L	377.43±59.37	538.19±71.17	<0.001
pH	7.33±0.08	7.25±0.06	<0.001
HCO₃ mmol/L	20.88±3.34	17.3±2.77	<0.001
Potassium mmol/L	5.0±1.07	4.79±1.11	0.45
ALT U/L	65.61±58.74	53.67±24.55	0.93
AST U/L	68.92±58.37	59.86±27.71	0.85
PaO₂/FiO₂ mm/Hg	195.62±34.06	105.67±25.56	<0.001

LDH: Lactate deshydrogenase; CRP: C-protein reactive ALT: alanine aminotransferase; AST: aspartate aminotrasnferase; pO₂/FiO₂ Arterial Oxygen Pressure / Inspired Oxygen Fraction

Table 4: Laboratory characteristic of the CKD5 dialysis and Covid 19 patients, re-categorized with new critical cut-off point.

Variable	Alive		Deceased		HR (CI 95%)	p
	n	%	n	%		
Lymphocyte						
>1000	32	94.12	2	5.88	5.21 (1.21-22.45)	0.027
≤1000	52	73.24	19	26.76		
Leukocytes						
≤11000	48	96.0	2	4.0	3.8 (1.2-15.12)	0.012
>11000	34	61.82	21	38.18		
D-dimer						
≤1.5	49	89.09	6	10.91	2.87(1.11-7.42)	0.029
>1.5	35	70	15	30		
Ferritin						
≤1000	57	89.06	7	10.94	3.05(1.22-7.06)	0.016
>1000	27	65.85	14	34.15		
CRP						
≤10	58	98.31	1	1.69	27.73(3.71-30.83)	0.001
>10	26	56.52	20	43.48		
LDH						
≤400	52	98.11	1	1.89	23.32(3.12-174.07)	0.002
>400	32	61.54	20	38.46		
Bicarbonate						
>20	56	93.33	4	6.67	7.58(2.53-22.69)	0.001
≤20	28	62.22	17	37.78		
PaO₂/FiO₂						
>150	79	97.53	2	2.47	38.01(8.83-163.49)	0.0001
≤150	5	20.83	19	79.17		

LDH: Lactate deshydrogenase; CRP: C-protein reactive; pO₂/FiO₂ Arterial Oxygen Pressure / Inspired Oxygen Fraction

Table 05: Factors related to survival in CKD5 dialysis and Covid 19 patients

Factors	HR	ES	Z	p	IC 95%
CRP>10 mg/dl	10.72	11.10	2.29	0.02	1.4-81.58
PaO ₂ /FiO ₂ ≤150 mmHg	44.70	45.85	3.67	0.000	5.86-336.06

*Cox regression

Figure 1: Survival in CKD5 dialysis and Covid 19 patients by level of PaO₂/FiO₂

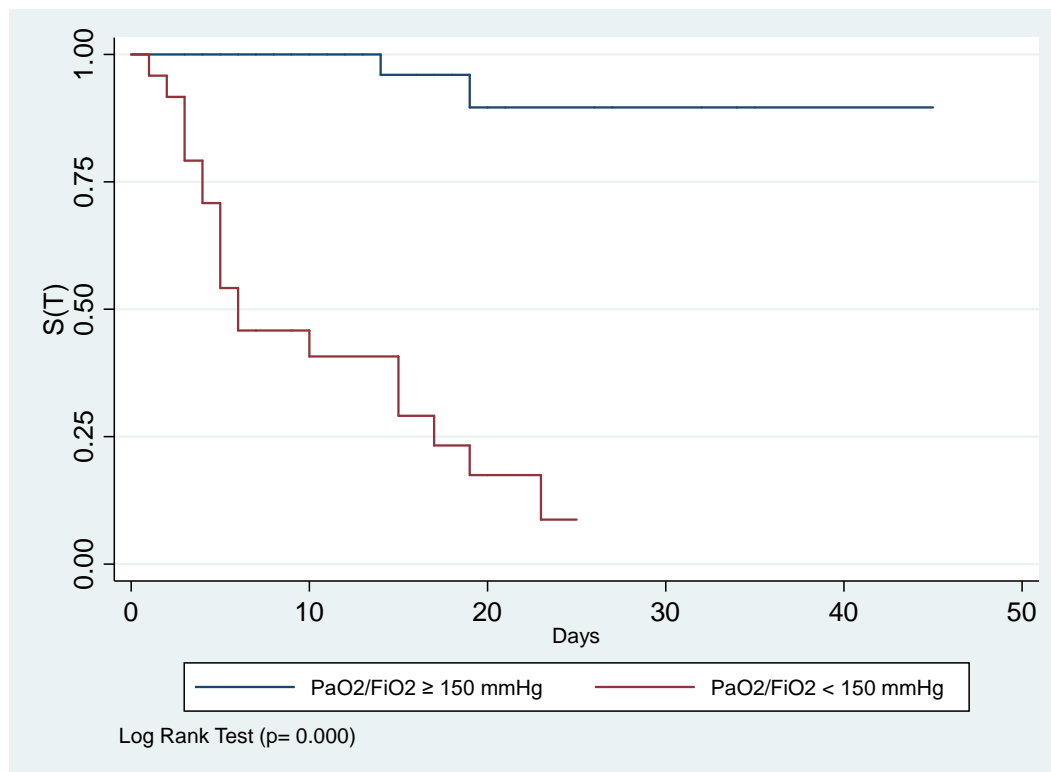


Figure 2: Survival in CKD5 dialysis and Covid 19 patients by level of CRP

