

# The impact of SARS-CoV-2 vaccination on Alpha & Delta variant transmission: Supplementary material

## Supplementary methods

### Contact definition

Contacts were defined as follows in line with national guidelines:<sup>1</sup> a person who has been close to someone who has tested PCR-positive for COVID-19 anytime from 2 days before the person was symptomatic up to 10 days from onset of symptoms. The nature of the contact could include:

- Living in the same household OR
- Face to face contact (within 1 metre for any length of time) or skin to skin contact or someone the case coughed on OR
- Within 1 metre for 1 minute or longer OR
- Within 1-2 metres for more than 15 minutes OR
- Sexual contacts OR
- Travel in the same vehicle or a plane

Contacts named by more than one index patient in a 10-day period were excluded given ambiguity about the infection source if the contact tested positive.

### Vaccination status

Index cases and contacts were included where their vaccination status, obtained from National Immunisation Management Service, was known. Matching was performed using NHS numbers, which are unique to each person in the UK. As all vaccination records included an NHS number, absence of a matched record was classified as unvaccinated, accepting a small amount of misclassification from individuals vaccinated in other countries or in trials. Only individuals vaccinated with Pfizer-BioNTech BNT162b2 and AstraZeneca ChAdOx1 were included, as numbers receiving other vaccines were too few to analyse.

### Classification of variants

Contacts of index cases tested between 01-January-2021 and 31-July-2021 were included as follows. Index cases with S-gene target failure (SGTF), used as a proxy for the Alpha (B.1.1.7) variant, were included up to 06-June-2021. During this period 5-95% of sequenced infections were due to Alpha.<sup>2</sup> However following 06-June-2021, the Alpha variant accounted for  $\leq 2\%$  of cases/week<sup>2</sup> (Figure S1), such that there was ambiguity about whether S gene target failure (SGTF) was due to Alpha or stochastic failure to amplify the S gene target at low viral loads with other lineages (predominantly Delta), which occurred in 1% of samples when Delta dominated at the end of July-2021. From the week beginning 10-May-

2021 national spread of Delta meant that >98% of sequenced cases were either due to the Alpha or Delta variants,<sup>2</sup> such that we used detection of S gene on or after 10-May-2021 as a proxy for the Delta variant. Index cases without SGTF prior to 10-May-2021 were excluded, as it was not possible to distinguish which cases had the Delta variant.

#### Statistical methods details

We used natural cubic splines to account for non-linear effects of continuous variables following truncation at the 2.5<sup>th</sup> and 97.5<sup>th</sup> centiles, allowing up to 5 default-placed knots (9 for calendar time to allow greater flexibility) and choosing the best fitting models using the Bayesian information criterion (BIC). Time since second vaccination for cases and contacts was log2 transformed (on the basis of model fit), truncating time separately for each vaccine. Interactions between all model main effects were included with this improved model fit based on the BIC.

All analyses were performed in R, version 4.0.

#### Supplementary results

A total of 12,657 contacts were excluded with incomplete data (8.3%): 11 missing index case Ct values, 7,721 missing a contact event type, 163 index case sex, 29 contact age, 5 contact sex, 173 contact's local area, and 4,555 with tests performed prior to availability of vaccination data for their local area (predominantly in January 2021).

## Supplementary Tables

Model factors	Description	Notes	
Main exposures	Index patient vaccination status	Pre-specified interaction with index patient SARS-CoV-2 variant included	
	Index patient SARS-CoV-2 variant	Alpha; Delta	
Covariates	Contact event type		
	Index patient factors	Age	
		Sex	
		Symptom status	
	Contact factors	Age	
		Sex	
		Vaccination status	Pre-specified interaction with index patient SARS-CoV-2 variant included
	Local area deprivation	Index of multiple deprivation (IMD) score for the local area (lower tier local authority, LTLA) containing the contact's home address	
	Local area SARS-CoV-2 Incidence	Rolling 7-day average SARS-CoV-2 incidence in the contact's LTLA on the day on the contact's PCR test	
	Local area second vaccine uptake	The percentage of those eligible having received two vaccines in the contact's LTLA on the day of the contact's PCR test	
Calendar time			

**Table S1. Model covariates.**

Index case vaccination status	n	Age, median	Age, IQR	Female, n	Female, %	Symptomatic, n	Symptomatic, %	Alpha variant, n	Alpha variant, %
Unvaccinated	41,728	41	29 - 52	22,309	53.5%	38,970	93.4%	38,051	91.2%
Partial ChAdOx1	9,723	44	39 - 51	5,212	53.6%	9,022	92.8%	3,468	35.7%
Partial BNT162b2	22,886	28	22 - 36	11,324	49.5%	21,450	93.7%	3,641	15.9%
Fully ChAdOx1	16,680	48	36 - 56	8,562	51.3%	15,679	94.0%	75	0.4%
Fully BNT162b2	4,699	46	32 - 59	2,949	62.8%	4,159	88.5%	145	3.1%

**Table S2. Index case demographics, symptom status, and infecting variant by index case vaccine status.**

Contact vaccination status	n	Age, median	Age, IQR	Female, n	Female, %	Alpha variant, n	Alpha variant, %
Unvaccinated	70,370	28	16 - 47	36,436	51.8	52,009	73.9
Partial ChAdOx1	10,325	47	41 - 54	5,814	56.3	3,406	33
Partial BNT162b2	18,017	30	24 - 37	10,372	57.6	3,492	19.4
Fully ChAdOx1	27,343	53	45 - 59	15,758	57.6	138	0.5
Fully BNT162b2	13,109	52	37 - 60	8,897	67.9	310	2.4

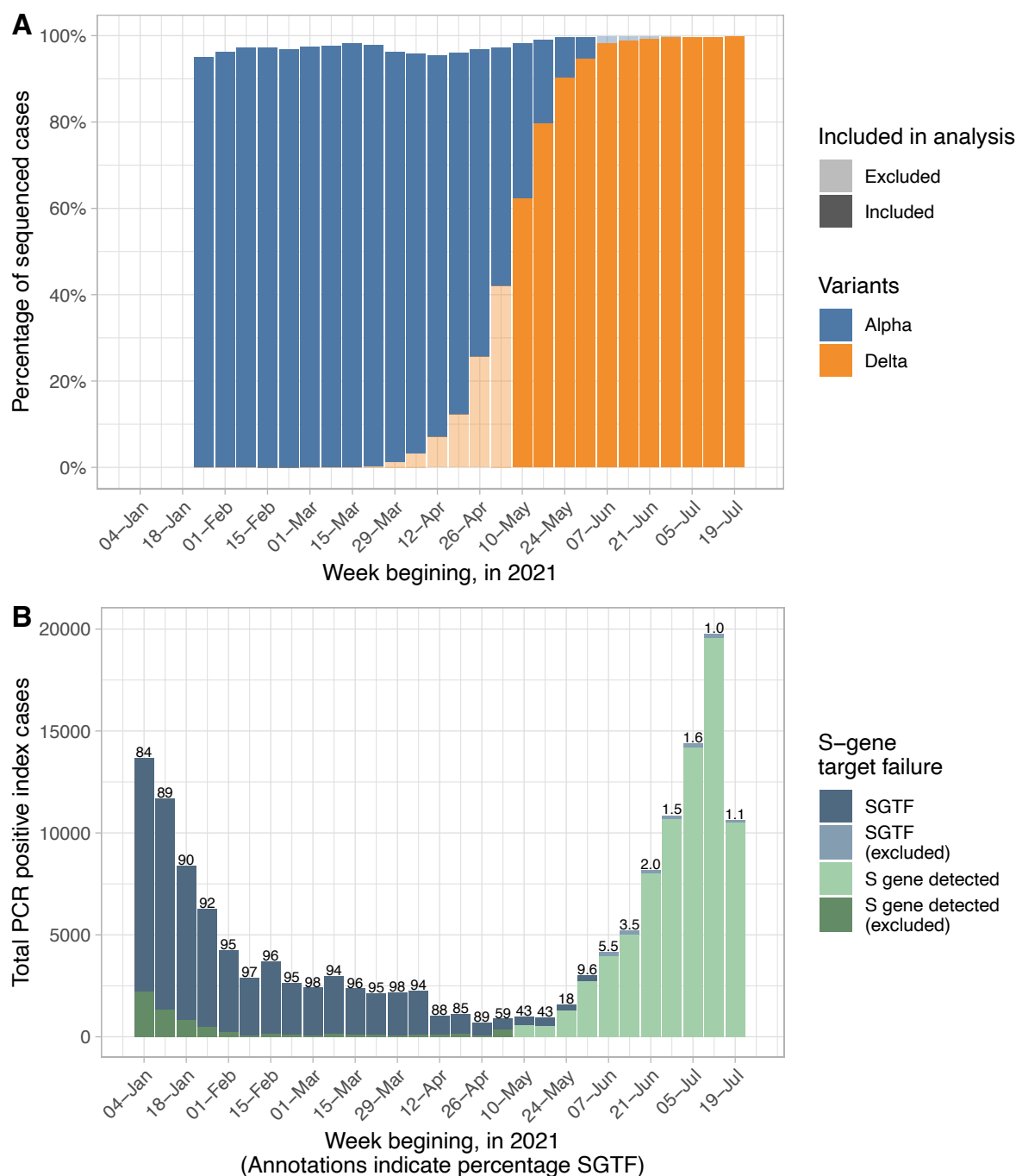
**Table S3. Contact demographics, and associated index case variant by contact vaccine status.**

Characteristic	n	Infected	% infected	aOR	95% CI	p-value
Variant						
Alpha	59,355	30,310	51	—	—	
Delta	79,809	21,488	27	1.30	1.10, 1.54	0.002
Index case vaccination status						
Unvaccinated	55,977	27,666	49	—	—	
Partial ChAdOx1	14,398	5,256	37	0.82	0.76, 0.88	<0.001
Partial BNT162b2	36,085	9,623	27	0.74	0.70, 0.80	<0.001
Full ChAdOx1	25,422	7,559	30	0.37	0.22, 0.63	<0.001
Full BNT162b2	7,282	1,694	23	0.18	0.12, 0.29	<0.001
Index case vaccination status * Variant						
Partial ChAdOx1 * Delta	9,950	3,229	32	1.20	1.07, 1.34	0.002
Partial BNT162b2 * Delta	31,339	7,530	24	1.17	1.06, 1.30	0.003
Full ChAdOx1 * Delta	25,293	7,539	30	1.71	1.01, 2.90	0.045
Full BNT162b2 * Delta	7,052	1,663	24	1.93	1.25, 2.99	0.003
Index case, per doubling of weeks since two weeks after second ChAdOx1 dose				1.13	1.09, 1.17	<0.001
Index case, per doubling of weeks since two weeks after second BNT162b2 dose			37	1.20	1.10, 1.31	<0.001
Index case age	See Figure 2A					
Index case sex						
F	73,883	26,938	36	See Figure 2C		
M	65,281	24,860	38			
Index case symptoms						
Symptomatic	129,341	49,757	38	—	—	
Asymptomatic	9,823	2,041	21	0.28	0.26, 0.30	<0.001
Variant * Index case symptoms						
Delta * Asymptomatic	4,886	790	16	1.64	1.47, 1.83	<0.001
Event type						
Household or accommodation	97,387	45,274	46	See Figures 2A, 2B		
Household Visitor	14,066	2,594	18			
Events / Activities	14,270	2,064	14			
Work or Education	13,441	1,866	14			
Contact vaccination status						
Unvaccinated	70,370	34,137	49	—	—	
Partial ChAdOx1	10,325	3,401	33	0.89	0.82, 0.97	0.010
Partial BNT162b2	18,017	5,809	32	0.69	0.64, 0.75	<0.001
Full ChAdOx1	27,343	6,163	23	0.29	0.17, 0.49	<0.001
Full BNT162b2	13,109	2,288	17	0.06	0.04, 0.10	<0.001
Contact vaccination status * Variant						
Partial ChAdOx1 * Delta	6,919	1,827	26	0.60	0.54, 0.67	<0.001
Partial BNT162b2 * Delta	14,525	4,235	29	0.83	0.76, 0.92	<0.001
Full ChAdOx1 * Delta	27,205	6,144	23	0.97	0.57, 1.65	0.91
Full BNT162b2 * Delta	12,799	2,260	18	1.64	1.07, 2.51	0.024

Characteristic	n	Infected	% infected	aOR	95% CI	p-value
Contact, per doubling of weeks since two weeks after second ChAdOx1 dose				1.16	1.11, 1.21	<0.001
Contact, per doubling of weeks since two weeks after second BNT162b2 dose				1.37	1.27, 1.48	<0.001
Contact age	See Figure 2B					
Contact sex						
F	77,277	27,790	36	See Figures 2C and S2		
M	61,887	24,008	39			
Index of multiple deprivation, per 1000 change, higher indicates more deprived				1.02	1.02, 1.02	<0.001
Local SARS-CoV-2 incidence	See Figure S3					
Study day	See Figure S4					
Event type * Contact sex	See Figure S2					
Index case sex * Contact age	See Figure 2C					
Index case sex * Contact sex	See Figure 2C					
Event type * Index case age	See Figure 2A					
Event type * Contact age	See Figure 2B					
Index case age * Contact age	See Figure 2D					

**Table S4. Multivariable logistic regression analysis of associations of PCR-positive results in contacts.** aOR, adjusted odds ratio; CI, confidence interval; \* indicates an interaction term. Non-linear relationships and associated interactions are shown in Figures 2 and S2-S4 as indicated.

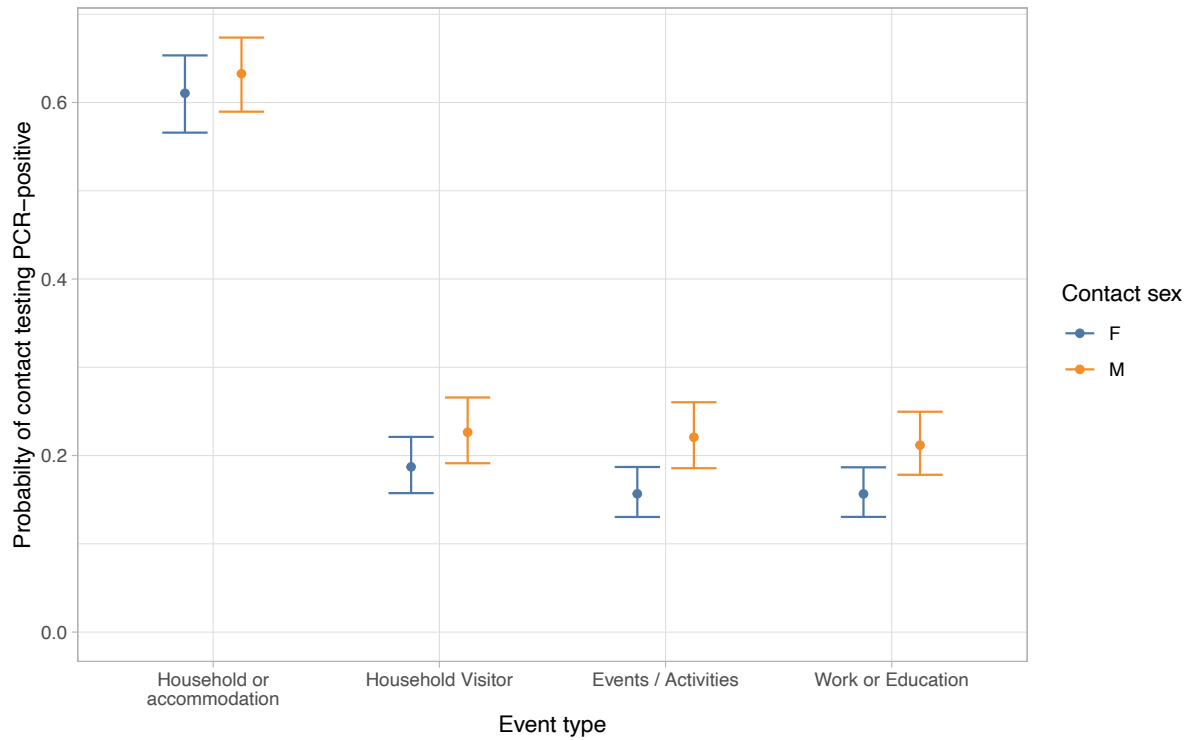
## Supplementary Figures



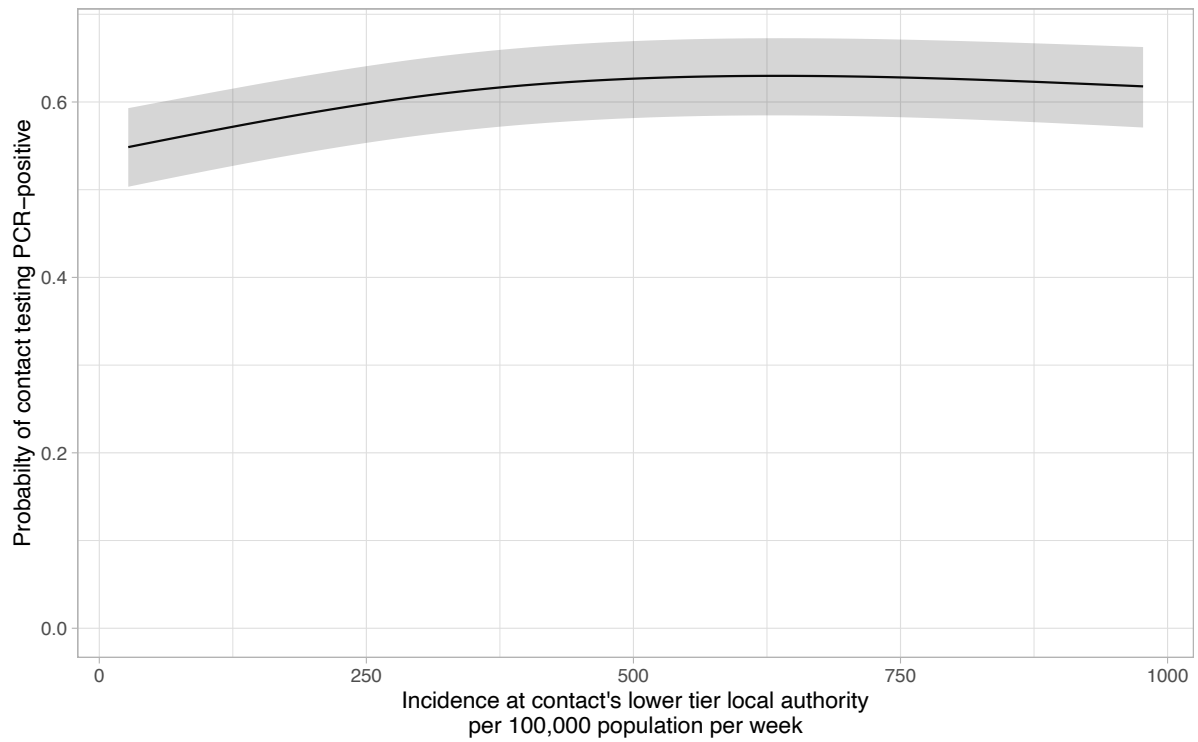
**Figure S1. National incidence of Alpha and Delta variants as determined by whole genome sequencing (panel A) and index case incidence according to S-gene target failure (SGTF, panel B).** In panel A, weeks for which index cases with presumed Alpha and Delta infections (see Methods) were included in the analysis are shown in the denser shading (sequencing not used to determine variant as not available for all index cases). Based on results of national sequencing data available at

<https://www.gov.uk/government/publications/investigation-of-novel-sars-cov-2-variant-variant-of-concern-20201201>. SGTF was seen in 1% of infections in the final two weeks of the study when Delta accounted for nearly all infections. Hence by only classifying index cases Alpha variant on the basis of SGTF in weeks where Alpha prevalence by sequencing exceeded  $\geq 5\%$  we ensured misclassification was minimised. In panel B the percentage of index cases with SGTF is provided above each bar.

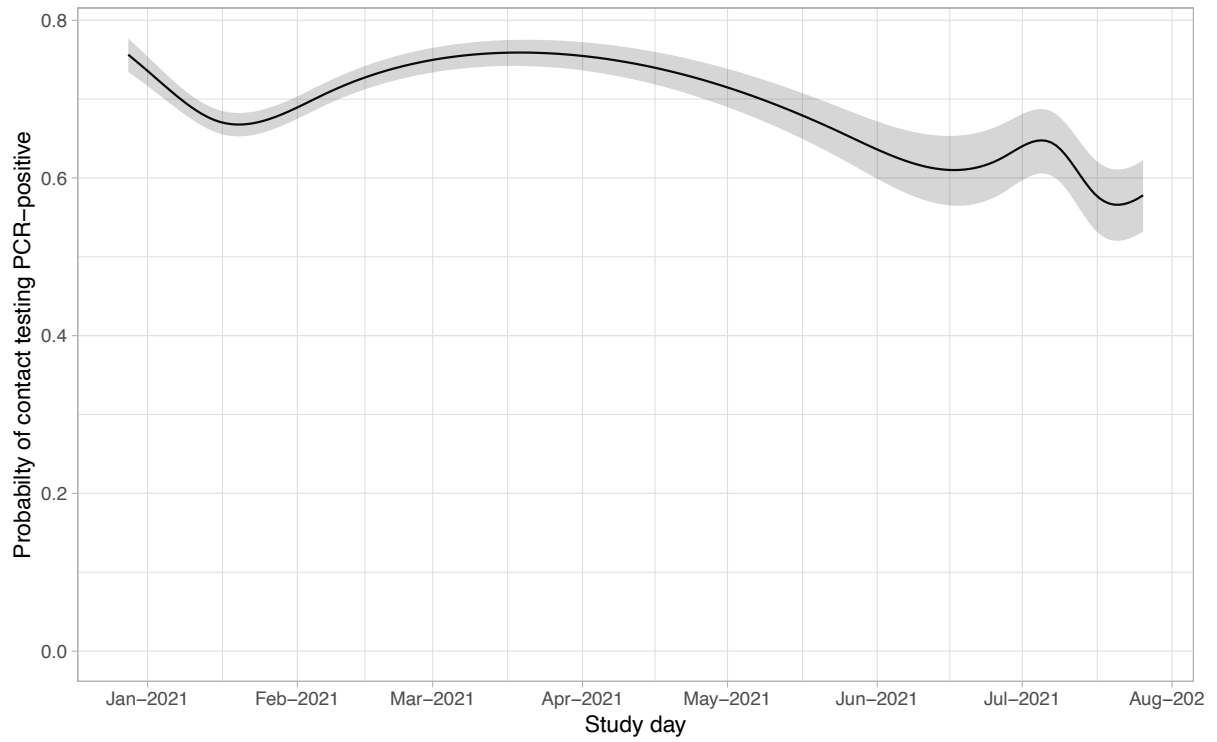




**Figure S2. Relationship between contact sex and contact event type and probability of a positive PCR test in a contact.** All other continuous covariates are set to median values and categorical covariates to reference categories, including variant, which is set to Alpha, and index symptom status, set to symptomatic. The error bars indicate 95% confidence intervals.



**Figure S3. Relationship between local SARS-CoV-2 incidence and probability of a positive PCR test in a contact.** All other continuous covariates are set to median values and categorical covariates to reference categories. The shaded area indicates the 95% confidence interval.



**Figure S4. Relationship between study day and probability of a positive PCR test in a contact.** All other continuous covariates are set to median values and categorical covariates to reference categories. The shaded area indicates the 95% confidence interval.

## References

1 Public Health England. Guidance for contacts of people with confirmed coronavirus (COVID-19) infection who do not live with the person.

<https://www.gov.uk/government/publications/guidance-for-contacts-of-people-with-possible-or-confirmed-coronavirus-covid-19-infection-who-do-not-live-with-the-person/guidance-for-contacts-of-people-with-possible-or-confirmed-coronavirus-covid-19-infection-who-do-not-live-with-the-person> (accessed Jan 20, 2021).

2 Public Health England. SARS-CoV-2 variants of concern and variants under investigation in England: Technical briefing 21. 2021; published online Aug 20.

[https://assets.publishing.service.gov.uk/government/uploads/system/uploads/attachment\\_data/file/1012644/Technical\\_Briefing\\_21.pdf](https://assets.publishing.service.gov.uk/government/uploads/system/uploads/attachment_data/file/1012644/Technical_Briefing_21.pdf) (accessed Sept 2, 2021).