

# 1 **Epidemiological and Clinical Features, Treatment Status, and Economic**

## 2 **Burden of Traumatic Spinal Cord Injury in China**

3 Hengxing Zhou<sup>1,2,#</sup>, Yongfu Lou<sup>2,#</sup>, Lingxiao Chen<sup>1,3,#</sup>, Yi Kang<sup>2,#</sup>, Lu Liu<sup>4</sup>, Zhiwei Cai<sup>5</sup>, David B  
4 Anderson<sup>3</sup>, Wei Wang<sup>2</sup>, Chi Zhang<sup>1</sup>, Jinghua Wang<sup>6</sup>, Guangzhi Ning<sup>2</sup>, Yanzheng Gao<sup>7</sup>, Baorong He<sup>4</sup>,  
5 Wenyuan Ding<sup>8</sup>, Yisheng Wang<sup>9</sup>, Wei Mei<sup>10</sup>, Yueming Song<sup>11</sup>, Yue Zhou<sup>12</sup>, Maosheng Xia<sup>13</sup>, Huan  
6 Wang<sup>14</sup>, Jie Zhao<sup>15</sup>, Guoyong Yin<sup>16</sup>, Tao Zhang<sup>17</sup>, Feng Jing<sup>18</sup>, Rusen Zhu<sup>19</sup>, Bin Meng<sup>20</sup>, Li Duan<sup>21</sup>,  
7 Zhongliang Deng<sup>22</sup>, Zhongmin Zhang<sup>23</sup>, Desheng Wu<sup>24</sup>, Yajun Liu<sup>25</sup>, Zhengdong Cai<sup>26</sup>, Lin Huang<sup>27</sup>,  
8 Zhanhai Yin<sup>28</sup>, Kainan Li<sup>29</sup>, Shibao Lu<sup>30</sup>, Xu Cao<sup>31</sup>, Shiqing Feng<sup>1,2,\*</sup>

9 1. Department of Orthopaedics, Qilu Hospital, Shandong University Centre for Orthopaedics,  
10 Cheeloo College of Medicine, Shandong University, Shandong, China.

11 2. Department of Orthopaedics, Tianjin Medical University General Hospital, Tianjin Medical  
12 University, International Science and Technology Cooperation Base of Spinal Cord Injury, Tianjin  
13 Key Laboratory of Spine and Spinal Cord, Tianjin, China.

14 3. Institute of Bone and Joint Research, Kolling Institute, Sydney Medical School, Faculty of  
15 Medicine and Health, University of Sydney, Sydney, New South Wales, Australia.

16 4. Department of Spine Surgery, Honghui Hospital, Xi'an Jiaotong University, Xi'an, China.

17 5. Department of Burns and Plastic Surgery, The Fourth Medical Center of PLA General Hospital,  
18 Beijing, People's Republic of China.

19 6. Laboratory of Epidemiology, Tianjin Neurological Institute, Department of Neurology, Tianjin  
20 Medical University General Hospital & Tianjin Neurological Institute, Key Laboratory of  
21 Post-Neuroinjury Neuro-repair and Regeneration in Central Nervous System, Ministry of Education  
22 and Tianjin City, Tianjin, China.

23 7. Department of Orthopedics, Henan Provincial People's Hospital, Zhengzhou, China.

24 8. Department of Spinal Surgery, The Third Hospital of Hebei Medical University, Shijiazhuang,  
25 China.

26 9. Department of Orthopedics, The First Affiliated Hospital of Zhengzhou University, Zhengzhou,  
27 China.

28 10. Department of Spine Surgery, Zhengzhou Orthopaedics Hospital, Zhengzhou, China.

29 11. Department of Orthopedic Surgery and Orthopedic Research Institute, West China Hospital,  
30 Sichuan University, Chengdu, China.

31 12. Department of Orthopaedics, Xinqiao Hospital, Army Medical University, Chongqing, China.

**NOTE: This preprint reports new research that has not been certified by peer review and should not be used to guide clinical practice.**

- 32 13. Department of Orthopaedics, The First Affiliated Hospital of China Medical University,  
33 Shenyang, China.
- 34 14. Department of Spinal Surgery, Shengjing Hospital of China Medical University, Shenyang,  
35 China.
- 36 15. Shanghai Key Laboratory of Orthopedic Implants, Department of Orthopedic Surgery, Shanghai  
37 Ninth People's Hospital, Shanghai Jiao Tong University School of Medicine, Shanghai, China.
- 38 16. Department of Orthopaedics, The First Affiliated Hospital of Nanjing Medical University,  
39 Nanjing, China.
- 40 17. Department of Spinal Surgery, Shanghai Jiao Tong University Affiliated Sixth People's Hospital,  
41 Shanghai, China.
- 42 18. Department of Spinal Surgery, Tianjin Hospital, Tianjin, China.
- 43 19. Department of Spine Surgery, Tianjin Union Medical Center, 190 Jieyuan Road, Hongqiao  
44 District, Tianjin, China.
- 45 20. Department of Orthopaedic Surgery, The First Affiliated Hospital of Soochow University,  
46 Suzhou, China.
- 47 21. Department of Orthopedics, Shenzhen Intelligent Orthopaedics and Biomedical Innovation  
48 Platform, Guangdong Artificial Intelligence Biomedical Innovation Platform, Shenzhen Second  
49 People's Hospital, The First Affiliated Hospital of Shenzhen University Health Science Center,  
50 Shenzhen, China.
- 51 22. Department of Orthopedics, The Second Affiliated Hospital of Chongqing Medical University,  
52 Chongqing, China.
- 53 23. Department of Orthopaedics, The Third Affiliated Hospital of Southern Medical University,  
54 Guangzhou, Guangdong Province, China.
- 55 24. Department of Spine Surgery, Shanghai East Hospital Affiliated, Tongji University School of  
56 Medicine, Shanghai, China.
- 57 25. Department of Spine Surgery, Beijing Jishuitan Hospital, The 4th Clinical Hospital of Peking  
58 University Health Science Center, Beijing, China.
- 59 26. Department of Orthopedics, Shanghai General Hospital, Shanghai Jiao Tong University School  
60 of Medicine, Shanghai, China.
- 61 27. Department of Orthopedics, Sun Yat-Sen Memorial Hospital, Sun Yat-Sen University,  
62 Guangzhou, China.
- 63 28. Department of Orthopaedics, The First Affiliated Hospital, Xi'an Jiaotong University, Xi'an,  
64 China.

65 29. Department of Orthopaedic Surgery, Affiliated Hospital of Chengdu University, Chengdu,  
66 China.

67 30. Beijing Xuanwu Hospital, Capital Medical University, Beijing, China; National Geriatric  
68 Diseases Research Center, Beijing, China.

69 31. Department of Orthopedic Surgery, Johns Hopkins University School of Medicine, Baltimore,  
70 MD, USA.

71 **\*Corresponding to:**

72 Professor. Shiqing Feng, PhD, Department of orthopaedics, Tianjin Medical University General  
73 Hospital, Tianjin Medical University, International Science and Technology Cooperation Base of  
74 Spinal Cord Injury, Tianjin Key Laboratory of Spine and Spinal Cord, Tianjin, 300052, P.R. China;  
75 Department of orthopaedics, Qilu Hospital, Shandong University Centre for orthopaedics, Cheeloo  
76 College of Medicine, Shandong University, Jinan, Shandong, 250012, P.R. China. Tel/fax:  
77 +8602288366139. Email: [sqfeng@tmu.edu.cn](mailto:sqfeng@tmu.edu.cn)

78 <sup>#</sup>These authors contributed equally to this work.

79 **Abstract**

80 **Background** China has the largest population of traumatic spinal cord injury  
81 (TSCI), but has not yet performed a national-level study on its epidemiological and  
82 clinical features, treatment status, and economic burden.

83 **Methods** A total of 14 754 patients were recruited between January 2013 and  
84 December 2018 from 37 hospitals in 11 provinces and municipalities, which  
85 represented all geographical divisions of China. The percentage of TSCI in  
86 hospitalized patients and the percentage of TSCI in hospitalized patients through the  
87 orthopaedic departments were calculated. The treatment status, total and daily costs  
88 were collected.

89 **Results** The percentage of TSCI in hospitalized patients and the percentage of TSCI  
90 in hospitalized patients through the orthopaedic departments did not change  
91 significantly overall (APC= -0.5%, 95% CI: -3.0 to 2.1 and -1.6%, -4.9 to 1.8,  
92 respectively). A total of 10 918 (74.0%) patients received surgery after TSCI.  
93 However, only 3.0% of patients underwent surgery received surgery less than 24  
94 hours after injury. A total of 2 084 (14.1%) patients were treated with  
95 methylprednisolone sodium succinate/methylprednisolone (MPSS/MP) at a high  
96 dose ( $\geq 500$  mg) and 641 (4.3%) patients receiving it within 8 hours. The total costs  
97 for acute TSCI decreased (-4.8%, -6.2 to -3.4), while the daily costs did not change  
98 significantly (0.5%, -1.2 to 2.2).

99 **Conclusions** This study revealed epidemiological and clinical features, treatment  
100 status, and economic burden of TSCI that occurred in China from 2013 to 2018.

- 101 **Funding** National Key Research and Development Project of Stem Cell and  
102 Transformation Research (2019YFA0112100).

## 103 **Introduction**

104 Traumatic spinal cord injury (TSCI) is a significant life event which can lead to  
105 permanent disability or even death (*Ahuja et al., 2017; National Spinal Cord Injury*  
106 *Statistical Center, 2016*). TSCI can be treated with surgery, glucocorticoids or other  
107 non-surgery treatments; followed by a period of rehabilitation (*Robert R Hansebout,*  
108 *2021*). These treatments bring a heavy financial burden to patients and their families,  
109 with direct costs ranging from US\$ 1.1 to 4.7 million per patient over their lifetime  
110 (*National Spinal Cord Injury Statistical Center, 2016*). Over the past three decades,  
111 there has been an increased understanding of the burden of TSCI globally,  
112 attributable to epidemiological studies, such as the Global Burden of Disease (GBD)  
113 Study (*GBD 2016 Traumatic Brain Injury and Spinal Cord Injury Collaborators,*  
114 *2019*). The GBD studies concluded that the number of people with TSCI would  
115 increase globally (*Institute for Health Metrics and Evaluation, 2021*). The GBD  
116 study did report limitations with the accuracy of data in some regions however, and  
117 did not collect data on the severity of TSCI, limiting calculations on disease burden  
118 (*Badhiwala et al., 2019*). Authors of the GBD study recommended more researches  
119 be conducted into developing countries and the collection of more comprehensive  
120 TSCI data (*Badhiwala et al., 2019*). Currently, the high-quality research in  
121 developing countries is still limited, especially in China which is one developing  
122 country of significance, given it possesses the largest population of any country and  
123 therefore has capacity to significantly influence global rates of TSCI (*Institute for*

124 *Health Metrics and Evaluation, 2021*). One major limitation of the current data  
125 available from China is that most of them are from regional areas (*Yuan et al.,*  
126 *2018*).

127

128 The purpose of this study was to identify the epidemiological and clinical features,  
129 treatment status, and economic burden of TSCI in China from 2013 to 2018.

## 130 **Methods**

131 We followed STrengthening the Reporting of OBServational studies in  
132 Epidemiology (STROBE) statement (*von Elm et al., 2007*).

133

### 134 **Study population**

135 We established the Chinese multicentre TSCI registry project (CMTSCIRP,  
136 ChiCTR1800019691) which was a national, hospital-based retrospective study. Any  
137 patients who sustained a TSCI between January 2013 and December 2018 in China  
138 and attended a large general hospital or orthopaedic speciality centre were included.

139 The sites included 37 hospitals from the seven geographical regions (Central China,  
140 Northern China, Eastern China, Southern China, Northwest China, Southwest China,  
141 and Northeast China) and four municipalities (Beijing, Shanghai, Tianjin, and  
142 Chongqing) of China. For each region or municipality, we selected between three  
143 and four hospitals that were either large general hospitals or orthopaedic speciality  
144 centres (Figure supplement 1). The study was approved by Medical Research Ethics  
145 Committee of Tianjin Medical University General Hospital [IRB2018-154-01] and  
146 all participating centres.

147

148 Spinal cord injury (SCI) is defined as damage to the spinal cord that temporarily or  
149 permanently causes its functional changes, and TSCI occurs when an external  
150 physical impact (such as falls, motor vehicle injuries, or sports-related injuries)  
151 acutely damages the spinal cord (*Ahuja et al., 2017*).



152

153 With the help of the librarian, we used the following strategy to retrieve TSCI cases.

154 We identified TSCI mainly using medical terms in Chinese ("Spinal fractures",

155 "Cervical fractures", "Thoracic fractures", "Lumbar fractures", "Sacral fractures",

156 "Spinal cord injury", "Cervical spine fracture with spinal cord injury", "Thoracic

157 spine fracture with spinal cord injury", "Lumbar spine fracture with spinal cord

158 injury", "Cervical spinal cord injury", "Thoracic spinal cord injury", "Lumbar spinal

159 cord injury", "Cauda equina injury", "Nerve injury", "Quadriplegia", "Paraplegia",

160 "Incomplete quadriplegia", and "Incomplete paraplegia"), as it was difficult to unify

161 case codes due to diversities in codes used by different hospitals. And the Tenth

162 Revision of the International Classification of Diseases (ICD-10) codes involved in

163 TSCI from the International Spinal Cord Injury Community Survey (InSCI) Group

164 was also used to complement and refine the medical terms [S12 (Fracture of the

165 neck), S12.0 (Fracture of first cervical vertebra), S12.2 (Fracture of other specified

166 cervical vertebra), S13.0 (Traumatic rupture of cervical intervertebral disk), S13.2

167 (Dislocation of other and unspecified parts of neck), S13.4 (Sprain and strain of

168 cervical spine), S14 (Injury of nerves and spinal cord at neck level), S14.0

169 (Concussion and edema of cervical spinal cord), S14.1 (Other and unspecified

170 injuries of cervical spinal cord), S17 (Crushing injury of neck), S19 (Other and

171 unspecified injuries of neck), S22 (Fracture of ribs, sternum and thoracic spine),

172 S22.0 (Fracture of thoracic vertebra), S23.1 (Dislocation of thoracic vertebra), S24

173 (Injury of nerves and spinal cord at thorax level), S24.0 (Concussion and edema of

174 thoracic spinal cord), S24.1 (Other and unspecified injuries of thoracic spinal cord),  
175 S28 (Crushing injury of thorax and traumatic amputation of part of thorax), S29  
176 (Other and unspecified injuries of thorax), S32 (Fracture of lumbar spine and pelvis),  
177 S32.0 (Fracture of lumbar vertebra), S33.1 (Dislocation of lumbar vertebra), S34.0  
178 (Concussion and edema of lumbar spinal cord), S34.1 (Other injury of lumbar spinal  
179 cord), S34.3 (Injury of cauda equina), S38 (Crushing injury and traumatic  
180 amputation of part of abdomen, lower back and pelvis), S39 (Other and unspecified  
181 injuries of abdomen, lower back and pelvis), T02.0 (Fractures involving head with  
182 neck), T02.1 (Fractures involving thorax with lower back and pelvis), T04.1  
183 (Crushing injuries involving thorax with abdomen, lower back and pelvis), T04.2  
184 (Crushing injuries involving multiple regions of upper limbs), T06.0 (Injuries of  
185 brain and cranial nerves with injuries of nerves and spinal cord at neck level), T06.1  
186 (Injuries of nerves and spinal cord involving other multiple body regions), T09.3  
187 (Injury of spinal cord, level unspecified), T09.4 (Injury of unspecified nerve, spinal  
188 nerve root and plexus of trunk), T91.1 (Sequelae of fracture of spine), T91.3  
189 (Sequelae of injury of spinal cord), G82 (Paraplegia and tetraplegia), G82.0 (Flaccid  
190 paraplegia), G82.1 (Spastic paraplegia), G82.2 (Paraplegia, unspecified), G82.3  
191 (Flaccid tetraplegia), G82.4 (Spastic tetraplegia), G82.5 (Tetraplegia, unspecified),  
192 G83.4 (Cauda equina syndrome)] (*Gross-Hemmi et al., 2017*). All cases were  
193 checked by trained investigators. Non-traumatic spinal cord injury (such as tumor or  
194 degenerative compression) was excluded.

195

## 196 **Outcomes**

197 Considering the accessibility of data, the percentage of TSCI in hospitalized patients  
198 of 23 hospitals were calculated from: the number of TSCI patients/the number of  
199 hospital admissions. We also calculated the percentage of TSCI in hospitalized  
200 patients through the orthopaedic departments from the same 23 hospitals as: the  
201 number of TSCI patients/the number of orthopaedic departments admissions.

202

203 According to the definition for early surgery (<24 h) mentioned in previous studies  
204 (*Robert R Hansebout, 2021; Badhiwala et al., 2021*) and the interquartile  
205 distribution of data in this study, surgery timing was divided to two sections: 1.  
206 "<24 h"; 2. "<4.0 d", "4.0-11.9 d" followed by ">11.9 d". Off-label use of  
207 methylprednisolone sodium succinate/methylprednisolone (MPSS/MP) for TSCI  
208 remains contentious (*Roberts et al., 2017*), therefore, we defined 500mg of  
209 MPSS/MP as a threshold in this study, based on the user guide (*DXY Drugs*  
210 *Information, 2021*). The use of MPSS/MP was divided into continuous and  
211 intermittent use. Intermittent use referred to that two or more prescriptions, with at  
212 least one day interval between arbitrary two prescriptions, were made for MPSS /  
213 MP use during hospitalization. The length of accumulated time was the sum of all  
214 days to use MPSS/MP. Although the use of MPSS/MP after SCI continues to be  
215 controversial, AOSpine organization suggested a high-dose of MPSS/MP within 8  
216 hours of acute SCI as a treatment option in 2017 (*Fehlings et al., 2017*). The starting  
217 time to use off-label MPSS/MP ( $\geq 500$  mg) was divided into " $\leq 8$  h", and ">8 h".

218 There rarely has been studies on whether normal dose of MPSS/MP and the starting  
219 time affect the treatment for SCI. Therefore, based on the interquartile distribution  
220 of data from patients of continuously using MPSS/MP with a normal dose (<500  
221 mg), the starting time of MPSS/MP use was divided into " $\leq 1.6$  d", "1.6-9.0 d", and  
222 " $\geq 9.0$  d". And the length of accumulated use time was divided into " $\leq 2$  d", "3-5d",  
223 and " $\geq 6$  d". In addition, we removed participants (1 case excluded in the high-dose  
224 group and 7 cases excluded in the normal dose group) who lacked starting time from  
225 injury to medication.

226

227 The total and daily costs were the costs during the patient's hospitalization for acute  
228 TSCI and were identified from the patient's medical record. And acute TSCI was  
229 defined as hospital admission within 14 days after spinal cord injury. The total and  
230 daily costs were converted to 2013 Chinese Yuan (CNY), discounting at an annual  
231 rate of 5%, as recommended by China guidelines for pharmacoeconomic  
232 evaluations (2020) (*Gordon, 2020*). In addition, referring to the exchange rate of  
233 CNY to USD (USA dollar, USD=100) in 2013 as CNY 619.32, the costs were  
234 showed by CNY and USD (*National Bureau of Statistics, 2021*). Non-acute TSCI  
235 patients were not included in the financial burden of this study, as acute and  
236 non-acute TSCI patients were treated differently during hospitalization, which  
237 would bias the estimate (*Robert R Hansebout, 2021*).

238

239 **Covariates**

240 Age groups in this study were divided into "15 years~", "25 years~", "35 years~",  
241 "45 years~", "55 years~" and " $\geq 65$  years". Occupations covered "Farmers",  
242 "Workers", "Retired", "Office clerks", "Students", "Self-employed", "Civil servants",  
243 "Drivers", "Teachers" and "Others" ("Unemployed" or "Freelances") based on  
244 medical records. The etiological groups consisted of "Low falls" ( $< 1$  m), "High  
245 falls" ( $\geq 1$  m), "Traffic accidents", "Struck by falling objects", "Sport related  
246 injuries", "Injuries caused by others", "Work related injuries", "Sharp injuries",  
247 "Massage related injuries" and "Others" ("Electric shock injuries", "Gunshot  
248 wounds", "Crush injuries", "Iatrogenic injuries", etc.). Level of injury comprised  
249 "Cervical", "Thoracic", "Lumbosacral", "Multi-site" and "Cauda equina", and  
250 "Multi-site" referred to at least two different segments of injury (*Selvarajah et al.*,  
251 *2014*). Severity was divided into four types: "Complete quadriplegia", "Complete  
252 paraplegia", "Incomplete quadriplegia" and "Incomplete paraplegia" based on  
253 degree and extent of neurological damage. The American Spinal Injury Association  
254 (ASIA) Impairment Scale (AIS), which superseded the original Frankel Scale, has  
255 been widely accepted among clinicians and researchers for classification of the  
256 location, severity and extent of spinal cord injury, introducing several changes  
257 aiming at a more consistent and objective description on the basis of the scores of a  
258 standardized examination of myotomes and dermatomes (*Kirshblum et al.*, *2011*).  
259 Neurological function of TSCI patients admitted was evaluated using the AIS, with  
260 a division into complete (AIS grade A) and 4 incomplete (AIS grade B-E) injury  
261 grades, and the grades and key description were shown in Table supplement 1

262 (*Roberts et al., 2017*). In groups with less than 1% of the total number of patients,  
263 they were categorized as "Others" to increase the reproducibility of the results  
264 (*Harrell Jr, 2015*).

265

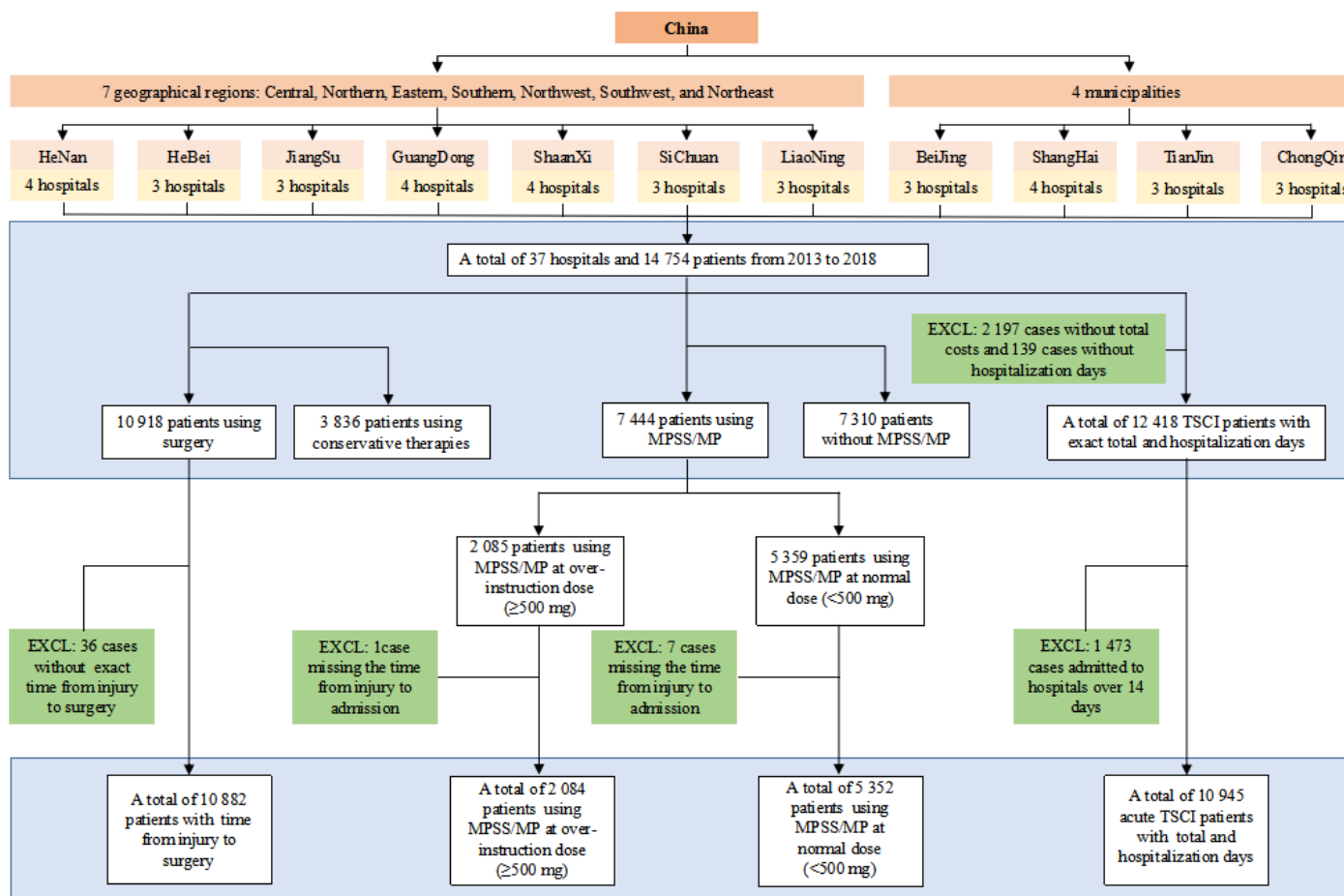
## 266 **Statistical Analysis**

267 Continuous variables were presented as a mean (standard deviation, SD) and  
268 categorical variables as numbers (percentages). Annual percentage change (APC) is  
269 usually used to estimate the event change rate during specific calendar years.  
270 Joinpoint regression analysis fits a series of joined linear models of the natural  
271 logarithm of annual incidence using calendar year as an independent variable, which  
272 is often useful to calculate the APC and corresponding 95% confidence interval  
273 (95% CI) (*Salomaa et al., 1992*). Trends in the percentage of TSCI in hospitalized  
274 patients, the percentage of TSCI in hospitalized patients through the orthopaedic  
275 departments, and costs were assessed by APC, using the following regression model:  
276  $\text{Log}(rt) = a + bt$ , where Log denoted the natural logarithm and t was the calendar  
277 year (*Salomaa et al., 1992*). The trend (b) was estimated using ordinary regression  
278 and  $100 \times b$  represented the estimated APC (*Salomaa et al., 1992*).

279

280 As exploratory analyses, we calculated trends of the percentages for each included  
281 hospital; we also performed two subgroup analyses based on hospital type ("General  
282 hospitals" versus "Orthopaedic hospitals") and economic level ("Above the PCDI

283 [Per Capita Disposable Income]" versus "Below the PCDI") (*National Bureau of*  
284 *Statistics, 2021*); considering the number of TSCI patients per year admitted by  
285 different hospitals varied a lot, we explored the relationship between the number of  
286 TSCI per year and the trend of percentages. "Economic level" was divided to  
287 "Above the PCDI" (the sum of final consumption expenditure and savings that  
288 residents can use, that is, the income that residents can use for free disposal) and  
289 "Below the PCDI" according to whether the residents' PCDI in the municipalities or  
290 non-municipality cities the hospitals located was higher than the national PCDI. The  
291 national PCDI in 2013 (CNY 18 311) was taken as the reference level. All residents'  
292 PCDI's come from the National Bureau of Statistics of China (*National Bureau of*  
293 *Statistics, 2021*). We hypothesized that the hospitals' TSCI number might influence  
294 APC (*Joynt et al., 2011*). Thus, we performed an additional analysis to explore the  
295 relationship between the hospitals' TSCI number and APC. The Joinpoint  
296 Regression Program, Version 4.8.0.1-April 2020 (Statistical Methodology and  
297 Applications Branch, Surveillance Research Program, National Cancer Institute),  
298 was used in the calculation of APC (*National Cancer Institute, 2020*). Statistical  
299 significance was defined as two-tailed  $P < 0.05$ . Statistical description of  
300 demographic and clinical features, treatment status, and economic burden of TSCI  
301 patients was performed using IBM SPSS Statistics Grad Pack 27.0 (IBM SPSS,  
302 Chicago, IL, USA). Linear regression and figures drawing were performed using  
303 GraphPad Prism version 9.0.2 for Windows (GraphPad Software, San Diego,  
304 California USA, [www.graphpad.com](http://www.graphpad.com)).



05 **Figure supplement 1. Flow chart of case identification**

06 In the end, a total of 14 754 patients from 37 hospitals in China were included in this study from 2013 to 2018. And the final number of cases included in the "surgery timing", the use of  
 07 MPSS/MP, and the costs of acute TSCI during hospitalization were shown in the above figure. TSCI=traumatic spinal cord injury. EXCL=excluded. MPSS/MP=methylprednisolone  
 08 sodium succinate/methylprednisolone.



309 **Table supplement 1. American Spinal Injury Association (ASIA) Impairment Scale (AIS) grade**

AIS grade	Category	Description
A	Complete	No motor or sensory function is preserved in the sacral segments S4–S5
B	Incomplete	Sensory function preserved but not motor function is preserved below the neurological level and includes the sacral segments S4–S5
C	Incomplete	Motor function is preserved below the neurological level, and more than half of key muscles below the neurological level have a muscle grade less than 3
D	Incomplete	Motor function is preserved below the neurological level, and at least half of key muscles below the neurological level have a muscle grade of 3 or more
E	Normal	Motor and sensory function are normal, but still may have abnormal reflexes or other neurologic phenomena <sup>a</sup> .

310 <sup>a</sup> AIS grade E referred to the International standards for neurological classification of spinal cord injury [revised  
311 2011] and an article from *J Spinal Cord Med* [Roberts TT, Leonard GR, Cepela DJ. Classifications In Brief:  
312 American Spinal Injury Association (ASIA) Impairment Scale. *Clin Orthop Relat Res* 2017;**475**:1499-504.

## 313 **Results**

### 314 **Epidemiological and Clinical Features**

315 A total of 14 754 TSCI cases were included in this study, with men accounting for  
316 75.3% (n=11 115). The average age was 50.0 years overall, 49.2 years in men and  
317 52.2 years in women. Considering TSCI by occupations, TSCI patients were more  
318 likely to be farmers (5 568, 37.7% of 14 754). The top three etiological causes of  
319 TSCI, accounting for 83.9% of all causes were: low falls (4 452, 30.2% of 14  
320 754), high falls (4 398, 29.8% of 14 754), and traffic accidents (3 524, 23.9% of  
321 14 754). TSCI occurred most commonly in the cervical segment (8 944, 60.6% of  
322 14 754) and presented most often as incomplete quadriplegia (6 483, 43.9% of 14  
323 754). Almost half of all patients (7 168, 48.6% of 14 754) were classified as AIS  
324 grade D on admission, followed by AIS grade A (3 671, 24.9% of 14 754) and  
325 AIS grade C (2 512, 17.0% of 14 754). (Table 1)

326

327 From 2013 to 2018, the percentage of TSCI in hospitalized patients and the  
328 percentage of TSCI in hospitalized patients through the orthopaedic departments  
329 did not change significantly overall (APC= -0.5%, 95% CI: -3.0 to 2.1 and APC=  
330 -1.6%, 95% CI: -4.9 to 1.8), but the trends varied among individual hospitals  
331 (Figure 1 and Figure supplement 2). The percentage of TSCI in hospitalized  
332 patients and the percentage of TSCI in hospitalized patients through the  
333 orthopaedic departments from general hospitals decreased (APC= -4.2%, 95% CI:

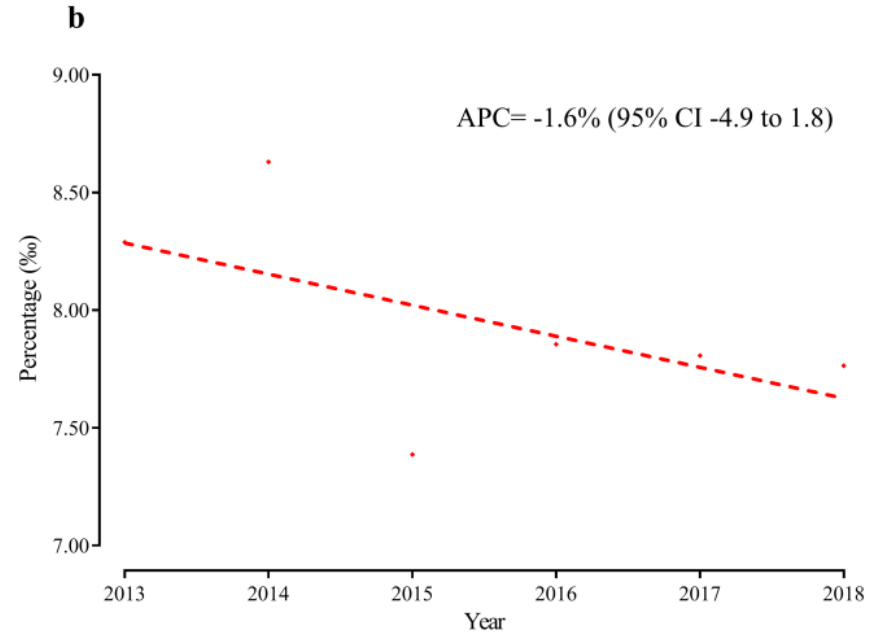
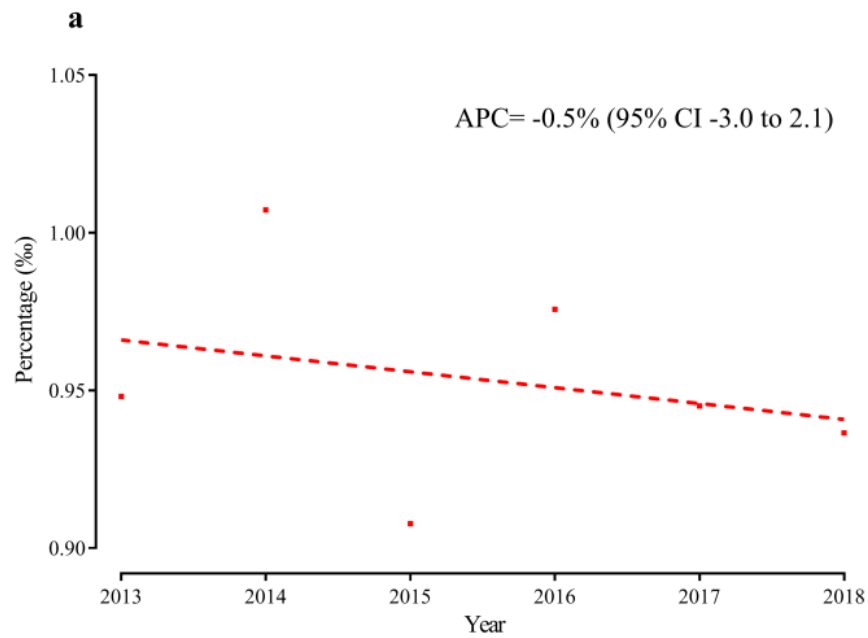
334 -7.2 to -1.0; APC= -5.1%, 95% CI: -8.4 to -1.7) (Table supplement 2). However,  
335 the percentage of TSCI in both hospitalized patients (APC= 8.4%, 95% CI: 3.5 to  
336 13.6) and hospitalized patients through the orthopaedic departments (APC= 7.5%,  
337 95% CI: 2.5 to 12.8) increased when the number of TSCI patients admitted to the  
338 hospital per year was greater than 140 (Figure supplement 3).

339 **Table 1: The epidemiological and clinical features among TSCI patients from 2013 to 2018**

Category	Men	Women	Total
All cases, n (%)	11 115 (75.3)	3 639 (24.7)	14 754 (100.0)
Age, years, mean (SD)	49.2 (14.3)	52.2 (15.3)	50.0 (14.6)
Age groups, n (%)			
15 years~	592 (5.3)	176 (4.8)	768 (5.2)
25 years~	1 284 (11.6)	323 (8.9)	1 607 (10.9)
35 years~	2 017 (18.1)	549 (15.1)	2 566 (17.4)
45 years~	3 139 (28.2)	960 (26.4)	4 099 (27.8)
55 years~	2 510 (22.6)	814 (22.4)	3 324 (22.5)
≥ 65 years	1 573 (14.2)	817 (22.5)	2 390 (16.2)
Occupations, n (%)			
Farmers	4 244 (38.2)	1 324 (36.4)	5 568 (37.7)
Workers	1 504 (13.5)	271 (7.4)	1 775 (12.0)
Retired	656 (5.9)	426 (11.7)	1 082 (7.3)
Office clerks	530 (4.8)	203 (5.6)	733 (5.0)
Students	210 (1.9)	116 (3.2)	326 (2.2)
Self-employed	226 (2.0)	73 (2.0)	299 (2.0)
Civil servants	147 (1.3)	70 (1.9)	217 (1.5)
Drivers	128 (1.2)	28 (0.8)	156 (1.1)
Others <sup>a</sup>	2 845 (25.6)	931 (25.6)	3 776 (25.6)
Missing	625 (5.6)	197 (5.4)	822 (5.6)
Etiological groups, n (%)			
Low falls	3 109 (28.0)	1 343 (36.9)	4 452 (30.2)
High falls	3 500 (31.5)	898 (24.7)	4 398 (29.8)
Traffic accidents	2 650 (23.8)	874 (24.0)	3 524 (23.9)
Struck by falling objects	763 (6.9)	118 (3.2)	881 (6.0)
Sport related injuries	105 (0.9)	61 (1.7)	166 (1.1)
Others <sup>b</sup>	641 (5.8)	243 (6.7)	884 (6.0)
Missing	347 (3.1)	102 (2.8)	449 (3.0)
Level of injury, n (%)			
Cervical	7 109 (64.0)	1 835 (50.4)	8 944 (60.6)
Thoracic	1 695 (15.2)	678 (18.6)	2 373 (16.1)
Lumbosacral	1 981 (17.8)	976 (26.8)	2 957 (20.0)
Multi-site	125 (1.1)	58 (1.6)	188 (1.2)
Cauda equina	21 (0.2)	8 (0.2)	29 (0.2)
Missing	184 (1.7)	84 (2.3)	268 (1.8)
Severity, n (%)			
Complete quadriplegia	1 502 (13.5)	298 (8.2)	1 800 (12.2)
Complete paraplegia	2 248 (20.2)	671 (18.4)	2 919 (19.8)
Incomplete quadriplegia	5 047 (45.4)	1 436 (39.5)	6 483 (43.9)
Incomplete paraplegia	2 131 (19.2)	1 144 (31.4)	3 275 (22.2)
Missing	187 (1.7)	90 (2.5)	277 (1.9)

AIS grade <sup>c</sup> , n (%)			
A	2 933 (26.4)	738 (20.3)	3 671 (24.9)
B	803 (7.2)	206 (5.7)	1 009 (6.8)
C	1 987 (17.9)	525 (14.4)	2 512 (17.0)
D	5 131 (46.2)	2 037 (56.0)	7 168 (48.6)
E	151 (1.4)	97 (2.7)	248 (1.7)
Missing	110 (1.0)	36 (1.0)	146 (1.0)

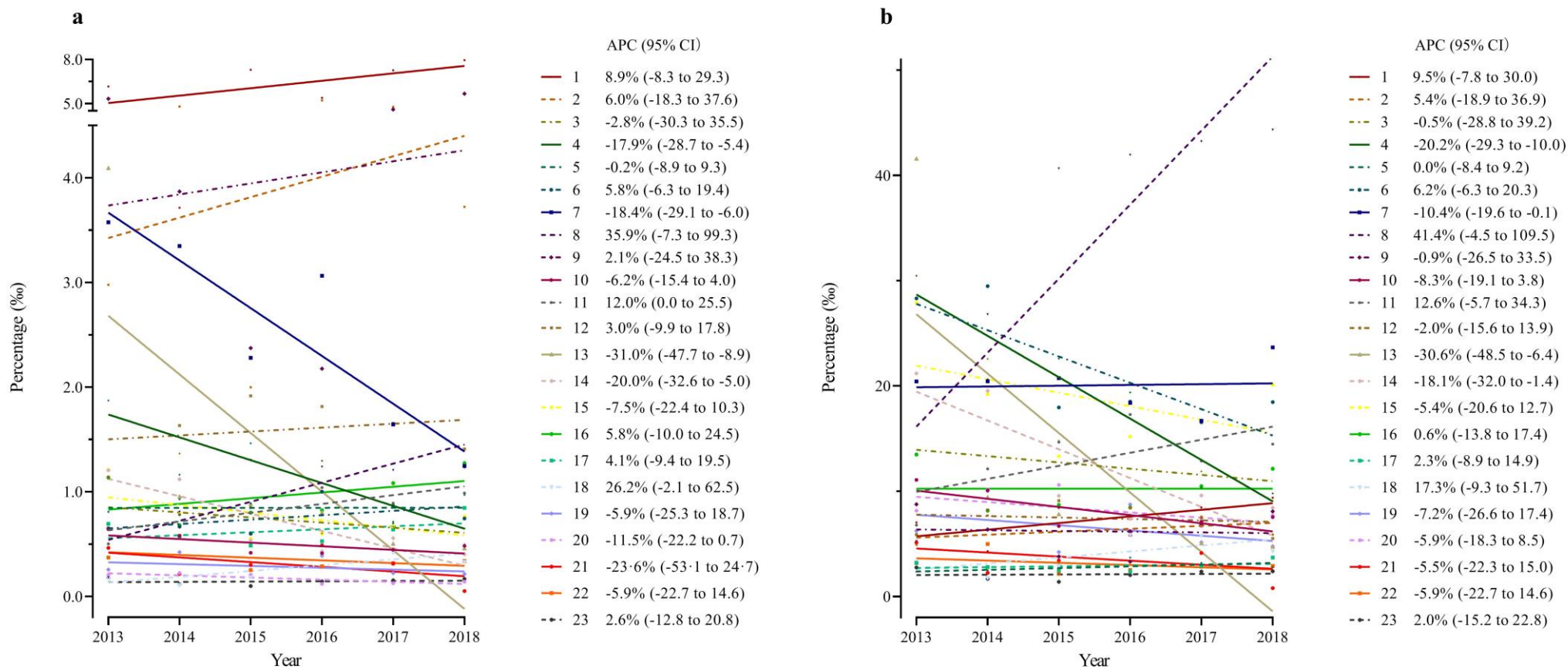
340 <sup>a</sup> "Others" included "Teachers", "Unemployed" and "Freelances". <sup>b</sup> "Others" included "Injuries  
341 caused by others", "Work related injuries", "Sharp injuries", "Massage related injuries", "Electric  
342 shock injuries", "Gunshot wounds", "Crush injuries", and "Iatrogenic injuries". <sup>c</sup> AIS grade A  
343 represents complete impairment with no motor or sensory function below the level of injury;  
344 grades B–D represent progressively less severe impairment; AIS grade E represents normal  
345 motor and sensory examinations, but still may have abnormal reflexes or other neurologic  
346 phenomena. TSCI=traumatic spinal cord injury. AIS=American Spinal Injury Association (ASIA)  
347 Impairment Scale. SD=standard deviation.



348

349 **Figure 1: Trends in the percentage among TSCI patients from 2013 to 2018**

350 (a) Trends in the percentage of TSCI in hospitalized patients from 23 hospitals, P= 0.61. (b) Trends in the percentage of TSCI in hospitalized patients through the  
 351 orthopaedic departments from 23 hospitals, P= 0.25. TSCI=traumatic spinal cord injury. APC=annual percentage change. 95% CI=95% confidence interval.



52 **Figure supplement 2. Trends in the percentage among TSCI patients of 23 hospitals from 2013 to 2018**

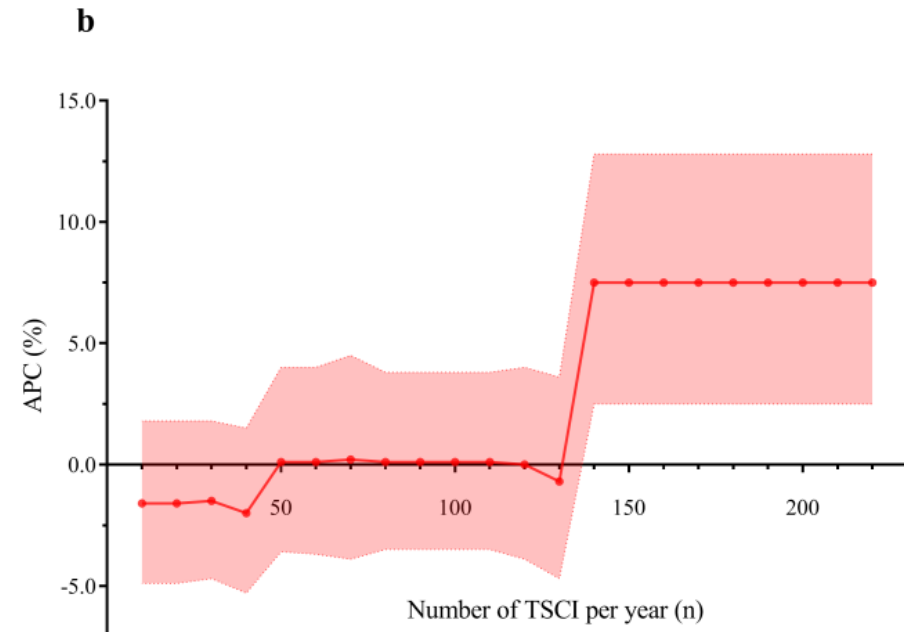
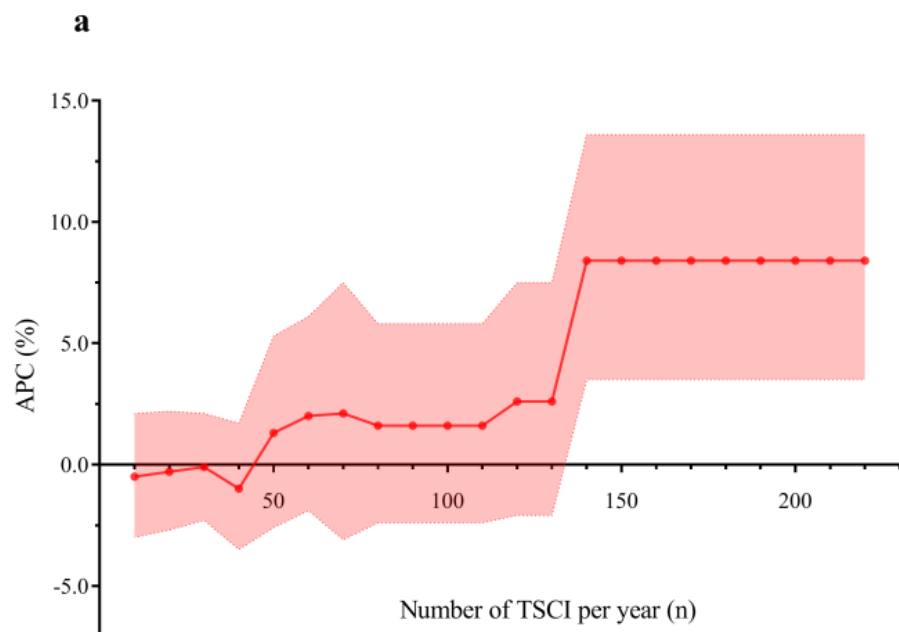
53 (a) Trends in the percentage of TSCI in hospitalized patients of each hospital from 23 hospitals. (b) Trends in the percentage of TSCI in hospitalized patients through the orthopaedic departments  
 54 of each hospital from 23 hospitals. TSCI=traumatic spinal cord injury. APC=annual percentage change. 95% CI=95% confidence interval.

355 **Table supplement 2. Trends in the percentage of different subgroups among TSCI patients from 2013 to 2018**

Category	2013	2014	2015	2016	2017	2018	APC (95% CI)
<b>TSCI patients/Hospitalized patients</b>							
Hospital type							
General hospital	0.000677437	0.000731737	0.000650481	0.000650376	0.000584477	0.000574924	-4.2 (-7.2, -1.0)
Orthopaedic hospital	0.004146887	0.004100949	0.003582044	0.004432452	0.004789523	0.004711542	3.8 (-2.2, 10.3)
Economic level							
Above the PCDI	0.000764280	0.000854571	0.000837578	0.000813096	0.000837774	0.000864237	1.5 (-1.1, 4.2)
Below the PCDI	0.001961198	0.001901074	0.001352715	0.002064160	0.001701302	0.001434080	-4.1 (-14.5, 7.6)
<b>TSCI patients/Orthopaedic patients</b>							
Hospital type							
General hospital	0.009496961	0.010165120	0.008524518	0.008521055	0.007753479	0.007722081	-5.1 (-8.4, -1.7)
Orthopaedic hospital	0.006207775	0.006087330	0.005567732	0.006757954	0.007892531	0.007828871	6.3 (-0.1, 13.1)
Economic level							
Above the PCDI	0.007594290	0.008133067	0.007529879	0.007149736	0.007625364	0.007885594	-0.2 (-3.3, 3.1)
Below the PCDI	0.010551825	0.010410185	0.006861413	0.010631962	0.008536560	0.007279922	-5.6 (-16.5, 6.8)

356 TSCI=traumatic spinal cord injury. APC=annual percentage change. 95% CI=95% confidence interval. PCDI=per capita disposable income.





357 **Figure supplement 3. The trends of APC in the percentage among TSCI patients from 23 hospitals**

358 (a)The trend of APC in the percentage among TSCI patients in hospitalized patients of different number of TSCI per year. (b) The trend of APC in the percentage  
 359 among TSCI patients in hospitalized patients through the orthopaedic departments of different number of TSCI per year. The value of the horizontal axis  
 360 represented the annual TSCI patients admitted. The APC corresponding to the points referred to the comprehensive calculation of APC from 2013 to 2018 of all  
 361 eligible hospitals whose annual TSCI patients were more than the corresponding number of horizontal axis in 23 hospitals. Shaded regions represent 95%  
 362 confidence interval. APC=annual percentage change. TSCI=traumatic spinal cord injury.

## 363 **Treatment Status**

### 364 **Surgery**

365 10 918 (74.0% of 14 754) patients received surgery after TSCI. The highest  
366 surgery rate was found in patients aged 15-24 years (591, 77.0% of 768). For  
367 etiological groups, patients with high falls were more likely to receive surgery (3  
368 571, 81.2% of 4 398). Considering the injury level, the highest surgery rate was  
369 found in patients with cauda equina (27, 93.1% of 29). Patients with complete  
370 paraplegia (2 343, 80.3% of 2 919) and AIS grade B (825, 81.8% of 1 009), had  
371 the highest surgery rate considering injury severity and AIS grade, respectively.  
372 Among the 10 882 patients who had exact surgery timing, a few (324, 3.0% of 10  
373 882) patients underwent surgery in less than 24 hours. In addition, about a quarter  
374 (2 698, 24.8% of 10 882) of patients underwent surgery less than 4.0 days,  
375 followed by about a half (5 462, 49.9% of 10 882) within 4.0-11.9 days, and a  
376 quarter (2 758, 25.3% of 10 882) more than 11.9 days after injury. (Table 2)

377

### 378 **Glucocorticoids**

379 2 084 (14.1% of 14 754) patients were treated with MPSS/MP at a high dose  
380 ( $\geq 500$  mg), of which 641 patients (30.8% of 2 084) received it within 8 hours,  
381 followed by 1 443 (69.2% of 2 084) at least 8 hours after TSCI. There were more  
382 than one third (5 352, 36.3% of 14 754) patients receiving a normal dose of  
383 MPSS/MP ( $< 500$  mg), of which most patients (5 012, 93.6% of 5 352) received it  
384 continuously and few (340, 6.4% of 5 352) intermittently (Figure 2 and Table

385 supplement 3).

386

387 **Neurotrophic Drugs, Dehydrants and Cathartics**

388 About two thirds (9 590, 65.0% of 14 754) of the patients were treated with  
389 neurotrophic drugs, and the top three categories were GM-1 ganglioside (4 979,  
390 51.9%), mouse nerve growth factor (2 785, 29.0%) and mecobalamin (2 580,  
391 26.9%). Among cases with dehydrants (8 898, 60.3% of 14 754) , mannitol (7 558,  
392 84.9%) was the most commonly used. Glycerin or glycerine enema (1 434, 95.1%)  
393 accounted for the highest proportion of cases with cathartics (1 508, 10.2% of 14  
394 754). (Table supplement 4)

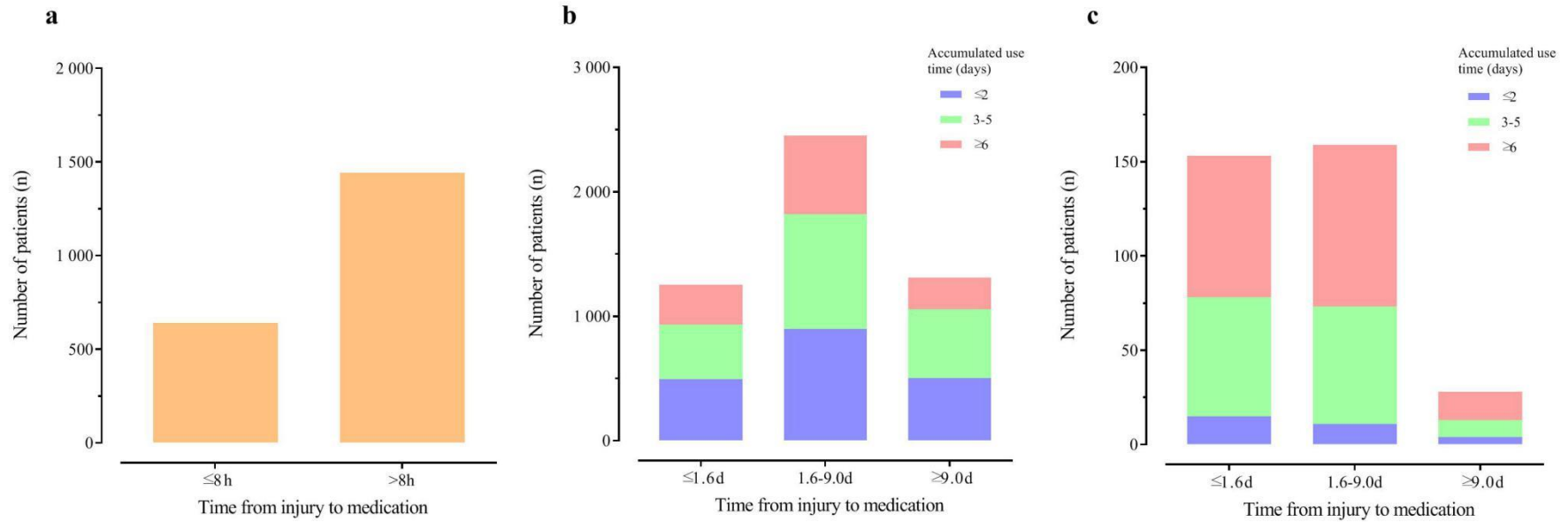
395 **Table 2: The treatment methods and surgery timing among TSCI patients**

Category	Treatment methods		Surgery timing <sup>a</sup>			
	Surgery	Conservative therapies	Section 1	Section 2		
			<24 h	<4.0 d	4.0-11.9 d	>11.9 d
Gender, n (%)						
Men	8 287 (74.6)	2 828 (25.4)	243 (2.9)	2 038 (24.7)	4 196 (50.8)	2 032 (24.6)
Women	2 631 (72.3)	1 008 (27.7)	81 (3.1)	660 (25.2)	1 230 (47.0)	726 (27.8)
Total	10 918 (74.0)	3 836 (26.0)	324 (3.0)	2 698 (24.8)	5 426 (49.9)	2 758 (25.3)
Age groups, n (%)						
15 years~	591 (77.0)	177 (23.0)	26 (4.4)	177 (30.0)	301 (51.0)	112 (19.0)
25 years~	1 214 (75.5)	393 (24.5)	53 (4.4)	375 (30.9)	579 (47.8)	258 (21.3)
35 years~	1 958 (76.3)	608 (23.7)	57 (2.9)	504 (25.9)	981 (50.4)	463 (23.8)
45 years~	3 098 (75.6)	1 001 (24.4)	94 (3.0)	765 (24.8)	1 570 (50.8)	754 (24.4)
55 years~	2 474 (74.4)	850 (25.6)	67 (2.7)	570 (23.1)	1 225 (49.7)	670 (27.2)
≥ 65 years	1 583 (66.2)	807 (33.8)	27 (1.7)	307 (19.5)	770 (48.8)	501 (31.7)
Occupations, n (%)						
Farmers	4 212 (75.6)	1 356 (24.4)	141 (3.4)	1 138 (27.1)	2 083 (49.6)	979 (23.3)
Workers	1 343 (75.7)	432 (24.3)	49 (3.7)	383 (28.6)	672 (50.1)	286 (21.3)
Retired	736 (68.0)	346 (32.0)	10 (1.4)	133 (18.2)	356 (48.6)	243 (33.2)
Office clerks	509 (69.4)	224 (30.6)	26 (5.1)	157 (31.0)	242 (47.8)	107 (21.1)
Students	249 (76.4)	77 (23.6)	13 (5.2)	76 (30.5)	119 (47.8)	54 (21.7)
Self-employed	213 (71.2)	86 (28.8)	8 (3.8)	61 (28.6)	104 (48.8)	48 (22.5)
Civil servants	144 (66.4)	73 (33.6)	2 (1.4)	37 (25.9)	71 (49.7)	35 (24.5)

Drivers	113 (72.4)	43 (27.6)	3 (2.7)	33 (29.2)	56 (49.6)	24 (21.2)
Others <sup>b</sup>	2 749 (72.8)	1 027 (27.2)	62 (2.3)	508 (18.6)	1 372 (50.1)	858 (31.3)
Missing	650 (79.1)	172 (20.9)	10 (1.5)	172 (26.6)	351 (54.3)	124 (19.2)
Etiological groups, n (%)						
Low falls	3 221 (72.3)	1 231 (27.7)	65 (2.0)	641 (20.0)	1 657 (51.7)	909 (28.3)
High falls	3 571 (81.2)	827 (18.8)	139 (3.9)	1 095 (30.7)	1762 (49.4)	707 (19.8)
Traffic accidents	2 489 (70.6)	1 035 (29.4)	65 (2.6)	564 (22.7)	1 221 (49.2)	696 (28.1)
Struck by falling objects	681 (77.3)	200 (22.7)	39 (5.7)	194 (28.6)	320 (47.1)	165 (24.3)
Sport related injuries	103 (62.0)	63 (38.0)	1 (1.0)	20 (19.4)	43 (41.7)	40 (38.8)
Others <sup>c</sup>	552 (62.4)	332 (37.6)	13 (2.4)	92 (16.7)	262 (47.5)	197 (35.8)
Missing	301 (67.0)	148 (33.0)	2 (0.7)	92 (31.0)	161 (54.2)	44 (14.8)
Level of injury, n (%)						
Cervical	6 339 (70.9)	2 605 (29.1)	124 (2.0)	1 203 (19.0)	3 351 (53.0)	1 769 (28.0)
Thoracic	1 905 (80.3)	468 (19.7)	73 (3.9)	547 (28.9)	844 (44.5)	505 (26.6)
Lumbosacral	2 374 (80.3)	583 (19.7)	117 (4.9)	874 (36.9)	1 074 (45.4)	419 (17.7)
Multi-site	161 (88.0)	22 (12.0)	7 (4.4)	48 (30.0)	77 (48.1)	35 (21.9)
Cauda equina	27 (93.1)	2 (6.9)	0 (0.0)	3 (11.1)	18 (66.7)	6 (22.2)
Missing	112 (41.8)	156 (58.2)	3 (2.8)	23 (21.1)	62 (56.9)	24 (22.0)
Severity, n (%)						
Complete quadriplegia	1 274 (70.8)	526 (29.2)	66 (5.2)	395 (31.1)	638 (50.2)	239 (18.8)
Complete paraplegia	2 343 (80.3)	576 (19.7)	130 (5.6)	799 (34.2)	1 023 (43.8)	512 (21.9)
Incomplete quadriplegia	4 590 (70.8)	1 893 (29.2)	46 (1.0)	688 (15.0)	2 486 (54.3)	1 404 (30.7)
Incomplete paraplegia	2 562 (78.2)	713 (21.8)	81 (3.2)	795 (31.1)	1 206 (47.2)	553 (21.7)
Missing	149 (53.8)	128 (46.2)	1 (0.7)	21 (14.6)	73 (50.7)	50 (34.7)
AIS grade <sup>d</sup> , n (%)						
A	2 824 (76.9)	847 (23.1)	157 (5.6)	1 009 (35.8)	1 259 (44.7)	549 (19.5)

B	825 (81.8)	184 (18.2)	48 (5.8)	246 (30.0)	421 (51.3)	154 (18.8)
C	1 937 (77.1)	575 (22.9)	52 (2.7)	397 (20.6)	1 057 (54.8)	476 (24.7)
D	5 117 (71.4)	2 051 (28.6)	62 (1.2)	1 012 (19.8)	2 571 (50.4)	1 521 (29.8)
E	162 (65.3)	86 (34.7)	5 (3.1)	26 (16.1)	96 (59.6)	39 (24.2)
Missing	53 (36.3)	93 (63.7)	0 (0.0)	8 (16.3)	22 (44.9)	19 (38.8)

396 <sup>a</sup> "Surgery timing" represented the time from injury to surgery (h=hours, d=days). <sup>b</sup> "Others" included "Teachers", "Unemployed" and "Freelances". <sup>c</sup> "Others"  
397 included "Injuries caused by others", "Work related injuries", "Sharp injuries", "Massage related injuries", "Electric shock injuries", "Gunshot wounds", "Crush  
398 injuries", and "Iatrogenic injuries". <sup>d</sup> AIS grade A represents complete impairment with no motor or sensory function below the level of injury; grades B–D  
399 represent progressively less severe impairment; AIS grade E represents normal motor and sensory examinations, but still may have abnormal reflexes or other  
400 neurologic phenomena. TSCI=traumatic spinal cord injury. AIS=American Spinal Injury Association (ASIA) Impairment Scale.



401

402 **Figure 2: The use of MPSS/MP among TSCI patients during hospitalization**

403 (a) Use of MPSS/MP at over-instruction dose ( $\geq 500$  mg). (b) Continuous use of MPSS/MP with normal instruction dose ( $< 500$  mg). (c) Intermittent use of

404 MPSS/MP with normal instruction dose ( $< 500$  mg). MPSS/MP=methylprednisolone sodium succinate/methylprednisolone. TSCI=traumatic spinal cord injury.

**Table supplement 3. The use of MPSS/MP among TSCI patients during hospitalization**

Category <sup>a</sup>	accumulated time ≤2 d	3 d ≤accumulated time ≤5 d	accumulated time ≥6 d	No accumulated time <sup>b</sup>	Total
Use of MPSS/MP at over-instruction dose (≥500 mg)					
≤8 h	--	--	--	641	641
>8 h	--	--	--	1 443	1 443
Total	--	--	--	2 084	2 084
Use of MPSS/MP with normal instruction dose (<500 mg)					
Total					5 352
Continuous use of MPSS/MP with normal instruction dose					
≤1.6 d	495	439	320	--	1 254
1.6-9.0 d	897	923	629	--	2 449
≥9.0 d	505	553	251	--	1 309
Total	1 897	1 915	1 200	--	5 012
Intermittent use of MPSS/MP with normal instruction dose					
≤1.6 d	15	63	75	--	153
1.6-9.0 d	11	62	86	--	159
≥9.0 d	4	9	15	--	28
Total	30	134	176	--	340

<sup>a</sup>The rows represented the start time of using MPSS/MP (h=hours, d=days), the columns represented the accumulated time of medication (d=days), and the figures represented the number of TSCI patients. <sup>b</sup> There is no accumulated time about use of MPSS/MP at over-instruction dose (≥500 mg). TSCI=traumatic spinal cord injury. MPSS/MP=methylprednisolone sodium succinate/methylprednisolone.



416 **Table supplement 4. The use of neurotrophic drugs, dehydrants and cathartics among TSCI patients**  
417 **during hospitalization**

Category	Number of patients, n (%) <sup>a</sup>
Neurotrophic drugs	9 590 (65.0)
GM-1 ganglioside	4 979 (51.9)
Mouse nerve growth factor	2 785 (29.0)
Mecobalamin	2 580 (26.9)
Neurotropin	1 927 (20.1)
Cattle encephalon glycoside and igitin	550 (5.7)
Cobamamide	263 (2.7)
Others <sup>b</sup>	71 (0.7)
Dehydrants	8 898 (60.3)
Mannitol	7 558 (84.9)
Glycerin fructose	1 516 (17.0)
Sodium aescinate	366 (4.1)
Cathartics	1 508 (10.2)
Glycerin or glycerine enemas	1 434 (95.1)
Lactulose oral solution	128 (8.5)
Maren soft capsule	25 (1.7)

418 <sup>a</sup>The overall use rate of neurotrophic drugs, dehydrants and cathartics was calculated by the proportion among  
419 TSCI patients. The utilization rate of each drug was calculated by the proportion among patients who used  
420 neurotrophic drugs, dehydrants or cathartics. <sup>b</sup>"others" included "Muscular amino acids and nucleosides" and/or  
421 "Deproteinized calf blood extractive". TSCI=traumatic spinal cord injury.

## 422 **Economic Burden and length of hospital stay**

423 The mean total costs among the 10 945 acute TSCI cases were CNY ¥ 71.0k (USD \$ 11.5k),  
424 with daily costs of ¥ 4.4k (\$ 0.7k). Both total and daily costs decreased gradually with age.  
425 Total costs were highest in students (¥ 79.6k, \$ 12.9k) but daily costs were highest in workers  
426 (¥ 4.4k, \$ 0.7k) considering occupations categories. Total costs were highest in patients struck  
427 by falling objects (¥ 95.9k, \$ 15.5k) while daily costs was highest in high falls (¥ 4.9k, \$ 0.8k)  
428 considering etiological groups. Total and daily costs were highest in cauda equina (¥ 94.1k,  
429 \$ 15.2k; ¥ 5.1k, \$ 0.8k) considering injury level. Both total and daily costs increased with the  
430 increasing of AIS grade (E to A). The average length of hospital stay was 19.9 (SD= 26.2)  
431 days. (Tables 3 and Table supplement 5)

432

433 Between 2013 and 2018, the total costs for acute TSCI decreased (APC= -4.8%, 95% CI: -6.2  
434 to -3.4). The daily costs did not change significantly (APC= 0.5%, 95% CI: -1.2 to 2.2), the  
435 same for both men (APC= 0.3%, 95% CI: -1.8 to 2.4) and women (APC= 1.7%, 95% CI: -1.6  
436 to 5.2). The daily costs of each age group did not change significantly, except for patients  
437 aged  $\geq 65$  years with a increase (APC= 2.9%, 95% CI: 0.1 to 5.9). In addition, the average  
438 length of hospital stay decreased (APC= -4.5, 95% CI: -8.1 to -0.6). (Table supplement 5 and  
439 Table supplement 6)

440

441 **Table 3: The costs among acute TSCI patients during hospitalization**

Category	Number of patients, n	Total costs	Daily costs
		(CNY/USD, thousand)	(CNY/USD, thousand)
		Mean (SD)	Mean (SD)
<b>Gender</b>			
Men	8 304	¥ 73.6 (72.3), \$ 11.9 (11.7)	¥ 4.4 (3.4), \$ 0.7 (0.6)
Women	2 641	¥ 62.6 (65.1), \$ 10.1 (10.5)	¥ 4.2 (3.5), \$ 0.7 (0.6)
Total	10 945	¥ 71.0 (70.8), \$ 11.5 (11.4)	¥ 4.4 (3.4), \$ 0.7 (0.6)
<b>Age groups</b>			
15 years~	602	¥ 83.5 (100.9), \$ 13.5 (16.3)	¥ 4.6 (3.5), \$ 0.7 (0.6)
25 years~	1 223	¥ 78.5 (70.9), \$ 12.7 (11.4)	¥ 4.5 (3.5), \$ 0.7 (0.6)
35 years~	1 928	¥ 75.6 (79.7), \$ 12.2 (12.9)	¥ 4.5 (3.4), \$ 0.7 (0.5)
45 years~	3 073	¥ 73.1 (65.2), \$ 11.8 (10.5)	¥ 4.4 (3.5), \$ 0.7 (0.6)
55 years~	2 439	¥ 65.9 (58.5), \$ 10.6 (9.4)	¥ 4.2 (3.5), \$ 0.7 (0.6)
≥ 65 years	1 680	¥ 59.0 (70.7), \$ 9.5 (11.4)	¥ 4.1 (3.2), \$ 0.7 (0.6)
<b>Occupations</b>			
Farmers	4 215	¥ 64.7 (54.6), \$ 10.4 (8.8)	¥ 4.3 (3.3), \$ 0.7 (0.5)
Workers	1 387	¥ 79.0 (75.7), \$ 12.7 (12.2)	¥ 4.4 (4.0), \$ 0.7 (0.6)
Retired	769	¥ 55.5 (52.5), \$ 9.0 (8.5)	¥ 4.0 (3.1), \$ 0.6 (0.5)
Office clerks	541	¥ 70.6 (72.7), \$ 11.4 (11.7)	¥ 4.4 (4.1), \$ 0.7 (0.7)
Students	282	¥ 79.6 (124.4), \$ 12.9 (20.1)	¥ 4.2 (3.8), \$ 0.7 (0.6)
Self-employed	229	¥ 61.3 (52.3), \$ 10.7 (9.1)	¥ 3.8 (2.9), \$ 0.6 (0.5)
Civil servants	179	¥ 63.1 (60.2), \$ 9.9 (8.4)	¥ 3.9 (3.9), \$ 0.6 (0.6)
Drivers	134	¥ 74.5 (97.0), \$ 12.0 (15.7)	¥ 3.8 (2.7), \$ 0.6 (0.4)
Others <sup>a</sup>	2 759	¥ 79.0 (85.3), \$ 12.8 (13.8)	¥ 4.5 (3.2), \$ 0.7 (0.5)
Missing	450	¥ 83.9 (60.7), \$ 13.5 (9.8)	¥ 5.6 (3.4), \$ 0.9 (0.5)
<b>Etiological groups</b>			
Low falls	3 260	¥ 54.7 (49.2), \$ 8.8 (8.0)	¥ 3.9 (3.3), \$ 0.6 (0.5)
High falls	3 459	¥ 81.2 (73.6), \$ 13.1 (11.9)	¥ 4.9 (3.5), \$ 0.8 (0.6)
Traffic accidents	2 705	¥ 73.8 (74.5), \$ 11.9 (12.0)	¥ 4.3 (3.3), \$ 0.7 (0.5)
Struck by falling objects	657	¥ 95.9 (110.8), \$ 15.5 (17.9)	¥ 4.8 (4.0), \$ 0.8 (0.6)
Sport related injuries	117	¥ 42.4 (42.0), \$ 6.8 (6.8)	¥ 4.0 (4.2), \$ 0.7 (0.7)
Others <sup>b</sup>	573	¥ 64.4 (68.5), \$ 10.4 (11.1)	¥ 3.6 (2.9), \$ 0.6 (0.5)
Missing	174	¥ 74.2 (51.3), \$ 12.0 (8.3)	¥ 5.3 (3.3), \$ 0.9 (0.5)
<b>Level of injury</b>			
Cervical	6 594	¥ 65.9 (68.4), \$ 10.6 (11.1)	¥ 4.2 (3.3), \$ 0.7 (0.5)
Thoracic	1 783	¥ 94.1 (90.5), \$ 15.2 (14.6)	¥ 5.0 (3.8), \$ 0.8 (0.6)
Lumbosacral	2 242	¥ 68.2 (56.9), \$ 11.0 (9.2)	¥ 4.4 (3.7), \$ 0.7 (0.6)
Multi-site	132	¥ 72.4 (43.2), \$ 11.7 (7.0)	¥ 5.0 (2.7), \$ 0.8 (0.4)
Cauda equina	37	¥ 94.1 (39.6), \$ 15.2 (6.4)	¥ 5.1 (1.7), \$ 0.8 (0.3)
Missing	157	¥ 52.5 (59.1), \$ 8.5 (9.5)	¥ 3.5 (2.7), \$ 0.6 (0.4)
<b>Severity</b>			
Complete quadriplegia	1 417	¥ 92.5 (102.0), \$ 14.9 (16.5)	¥ 4.8 (3.3), \$ 0.8 (0.5)

Complete paraplegia	2 248	¥ 93.0 (89.2), \$ 15.0 (14.4)	¥ 5.1 (4.2), \$ 0.8 (0.7)
Incomplete quadriplegia	4 702	¥ 58.6 (50.7), \$ 9.5 (8.2)	¥ 4.0 (3.2), \$ 0.6 (0.5)
Incomplete paraplegia	2 467	¥ 62.7 (53.9), \$ 10.1 (8.7)	¥ 4.2 (3.0), \$ 0.7 (0.5)
Missing	111	¥ 57.1 (51.2), \$ 9.2 (8.3)	¥ 3.7 (2.9), \$ 0.6 (0.5)
AIS grade <sup>d</sup>			
A	2 958	¥ 96.4 (101.5), \$ 15.6 (16.4)	¥ 5.1 (4.0), \$ 0.8 (0.6)
B	731	¥ 92.5 (71.7), \$ 14.9 (11.6)	¥ 5.1 (3.8), \$ 0.8 (0.6)
C	1 831	¥ 75.9 (56.2), \$ 12.3 (9.1)	¥ 4.5 (3.0), \$ 0.7 (0.5)
D	5 208	¥ 52.4 (43.5), \$ 8.5 (7.0)	¥ 3.8 (3.1), \$ 0.6 (0.5)
E	171	¥ 49.5 (53.6), \$ 8.0 (8.7)	¥ 3.3 (3.0), \$ 0.5 (0.5)
Missing	46	¥ 70.4 (76.7), \$ 11.4 (12.4)	¥ 4.1 (2.3), \$ 0.7 (0.4)

442 <sup>a</sup> "Others" included "Teachers", "Unemployed" and "Freelances". <sup>b</sup> "Others" included "Injuries caused by others",  
 443 "Work related injuries", "Sharp injuries", "Massage related injuries", "Electric shock injuries", "Gunshot  
 444 wounds", "Crush injuries", and "Iatrogenic injuries". <sup>c</sup> AIS grade A represents complete impairment with no  
 445 motor or sensory function below the level of injury; grades B–D represent progressively less severe impairment;  
 446 AIS grade E represents normal motor and sensory examinations, but still may have abnormal reflexes or other  
 447 neurologic phenomena. TSCI=traumatic spinal cord injury. AIS=American Spinal Injury Association (ASIA)  
 448 Impairment Scale. CNY=Chinese Yuan. USD=USA dollar. SD=standard deviation.

49 **Table supplement 5. Trends in the length of hospital stay among acute TSCI patients from 2013 to 2018<sup>a</sup>**

Category	Overall	2013	2014	2015	2016	2017	2018	APC (95% CI)
Gender, Mean (SD)								
Men	20.4 (27.1)	21.9 (20.7)	23.1 (40.1)	20.1 (23.7)	21.2 (25.8)	19.6 (28.6)	17.7 (17.9)	-4.2 (-7.5, -0.8)
Women	18.5 (23.2)	19.4 (16.8)	20.1 (19.5)	20.4 (26.4)	19.9 (25.4)	18.1 (30.3)	14.6 (15.0)	-4.9 (-10.7, 1.3)
Total	19.9 (26.2)	21.3 (19.8)	22.4 (36.5)	20.1 (24.3)	20.9 (25.7)	19.3 (29.0)	16.8 (17.2)	-4.5 (-8.1, -0.6)
Age groups, Mean (SD)								
15 years~	22.4 (31.6)	20.9 (14.9)	25.0 (26.2)	20.5 (24.0)	23.2 (22.8)	26.5 (64.6)	19.0 (16.2)	-0.5 (-9.5, 9.3)
25 years~	21.5 (25.3)	25.8 (29.4)	25.2 (29.8)	21.9 (30.2)	20.2 (19.1)	19.6 (22.2)	18.8 (21.6)	-6.7 (-8.8, -4.5)
35 years~	21.1 (35.1)	21.8 (22.2)	24.0 (62.8)	21.6 (28.7)	21.0 (27.6)	18.7 (21.8)	19.4 (23.7)	-3.8 (-7.4, -0.1)
45 years~	20.9 (25.9)	20.6 (14.7)	22.5 (23.9)	22.1 (27.4)	21.8 (29.0)	20.8 (32.4)	18.0 (18.5)	-2.6 (-7.1, 2.2)
55 years~	18.6 (19.9)	20.7 (19.2)	21.7 (27.6)	16.8 (14.5)	20.6 (22.5)	16.7 (20.0)	16.2 (12.5)	-5.0 (-11.1, 1.5)
≥ 65 years	16.9 (20.3)	19.3 (19.1)	16.9 (14.6)	18.1 (17.6)	19.5 (26.6)	18.2 (27.1)	12.5 (9.5)	-5.2 (-14.0, 4.5)

50 <sup>a</sup>Length of hospital stay was measured in days.

51 **Table supplement 6. Trends in the costs among acute TSCI patients from 2013 to 2018**

Category	2013	2014	2015	2016	2017	2018	APC (95% CI)
<b>Total costs (CNY ¥, thousand), Mean (SD)</b>							
Gender							
Men	85.0 (79.8)	81.2 (85.1)	72.7 (62.2)	72.3 (64.3)	68.4 (75.4)	68.0 (67.3)	-4.6 (-6.5, -2.6)
Women	67.8 (58.4)	72.9 (108.0)	67.6 (69.3)	62.0 (54.1)	57.9 (47.1)	54.2 (46.3)	-5.3 (-8.4, -2.1)
Total	80.6 (75.3)	79.4 (90.8)	71.5 (63.8)	69.8 (62.2)	65.8 (69.7)	64.4 (62.8)	-4.8 (-6.2, -3.4)
Age groups							
15 years~	84.1 (58.9)	104.8 (201.5)	80.4 (70.1)	75.6 (51.9)	80.0 (96.2)	78.3 (59.8)	-3.5 (-10.2, 3.8)
25 years~	96.3 (100.6)	95.5 (93.9)	71.2 (66.4)	75.8 (61.4)	73.5 (56.8)	68.8 (46.1)	-6.6 (-11.8, -1.2)
35 years~	83.5 (90.1)	81.1 (98.9)	72.8 (53.8)	75.4 (70.7)	69.3 (51.4)	72.3 (97.6)	-3.3 (-5.8, -0.6)
45 years~	86.1 (68.6)	75.3 (61.9)	78.3 (68.8)	69.9 (69.1)	67.7 (61.4)	68.9 (61.4)	-4.3 (-7.2, -1.4)
55 years~	73.3 (65.7)	76.0 (74.8)	64.3 (56.2)	68.3 (53.7)	57.0 (46.4)	61.2 (52.8)	-4.8 (-8.9, -0.4)
≥ 65 years	61.6 (57.1)	63.6 (64.7)	63.7 (68.4)	59.0 (50.6)	62.4 (110.9)	50.3 (44.3)	-3.2 (-7.8, 1.6)
<b>Daily costs (CNY ¥, thousand), Mean (SD)</b>							
Gender							
Men	4.5 (3.4)	4.3 (3.4)	4.4 (3.1)	4.2 (2.8)	4.5 (3.9)	4.5 (3.6)	0.3 (-1.8, 2.4)
Women	3.9 (3.6)	4.4 (3.9)	4.2 (3.5)	4.0 (3.3)	4.3 (3.3)	4.5 (3.5)	1.7 (-1.6, 5.2)
Total	4.4 (3.5)	4.3 (3.5)	4.3 (3.2)	4.2 (2.9)	4.4 (3.8)	4.5 (3.6)	0.5 (-1.2, 2.2)
Age groups							
15 years~	4.4 (3.0)	5.1 (5.6)	4.3 (2.6)	4.3 (3.2)	4.6 (3.0)	4.8 (3.0)	0.4 (-4.6, 5.6)
25 years~	4.6 (3.6)	4.6 (3.4)	4.4 (3.8)	4.3 (2.8)	4.7 (4.7)	4.5 (2.7)	-0.2 (-2.6, 2.2)
35 years~	4.6 (4.2)	4.5 (3.8)	4.4 (2.9)	4.5 (3.2)	4.7 (3.2)	4.3 (2.8)	-0.5 (-2.7, 1.7)
45 years~	4.6 (3.2)	4.3 (3.4)	4.6 (3.7)	4.1 (2.6)	4.5 (4.5)	4.5 (3.0)	-0.3 (-3.5, 3.1)
55 years~	4.2 (2.9)	4.2 (3.1)	4.1 (2.7)	4.1 (3.2)	4.2 (3.3)	4.5 (4.9)	1.0 (-1.1, 3.2)
≥ 65 years	3.8 (3.9)	3.9 (2.9)	4.0 (3.1)	3.8 (2.5)	4.2 (3.1)	4.5 (3.5)	2.9 (0.1, 5.9)

52 TSCI=traumatic spinal cord injury. APC=annual percentage change. 95% CI=95% confidence interval. CNY=Chinese Yuan. SD=standard deviatio

## 453 **Discussion**

454 To our knowledge, this is the first national-level study of the epidemiological and clinical  
455 features, treatment status and economic burden of TSCI in China. The study was a  
456 retrospective multicentre hospital-based study of TSCI from 2013 to 2018. We found that the  
457 percentage of TSCI in hospitalized patients and the percentage of TSCI in hospitalized  
458 patients through the orthopaedic departments did not change significantly overall, but the  
459 percentage of TSCI in both hospitalized patients and hospitalized patients through the  
460 orthopaedic departments increased when the number of TSCI per year was greater than 140.  
461 We described the treatment status with regard to: surgery, MPSS/MP, neurotrophic drugs,  
462 dehydrants and cathartics in detail. The total costs for acute TSCI decreased, while the daily  
463 costs did not change significantly.

464

465 The epidemiological features, such as gender (male: 75.3%) and average age (50.0 years)  
466 were consistent with other previous area studies of TSCI in China (*Yuan et al., 2018*). Our  
467 results showed that TSCI patients were more likely to be farmers (37.7%), which was  
468 different from the epidemiological studies in Turkey and Mexico (*Güzelküçük et al., 2015; Zá  
469 rate-Kalfópulos et al., 2016*). The higher number of farmers suffering TSCI in China  
470 compared with other countries might reflect the type of work farmers in China are  
471 undertaking, including high-risk construction, which increases the risk of falls from elevated  
472 heights, which made up 29.8% of all TSCI (*National Bureau of Statistics, 2021*).

473

474 From 2013 to 2018, the percentage of TSCI in hospitalized patients and the percentage of  
475 TSCI in hospitalized patients through the orthopaedic departments did not change  
476 significantly overall. This finding was similar with the trend of age-standardized incidence  
477 rates of spinal cord injury in China reported in the GBD study (*GBD 2016 Traumatic Brain  
478 Injury and Spinal Cord Injury Collaborators, 2019*). The percentage of TSCI in both  
479 hospitalized patients and hospitalized patients through the orthopaedic departments increased  
480 when the number of TSCI per year was greater than 140, which might reflect a changing trend  
481 in China of TSCI patients being treated in hospitals with more TSCI expertise. Transferring  
482 patients who suffer a TSCI into hospitals with speciality in TSCI is likely to improve the  
483 quality of the patients care, and might also help reduce the burden on the large non-specialist  
484 hospitals. In China, the over-burdening of the large non-specialist hospitals has prevented  
485 optimal care from being provided for TSCI, such as early treatment (*National Health  
486 Commission of the People's Republic of China, 2019*).

487

488 One of the recommended early treatment for TSCI is surgery (*Robert R Hansebout, 2021*),  
489 and a recent pooled analysis including 1 548 patients showed that surgery decompression  
490 within 24 hours of acute spinal cord injury was associated with improved sensorimotor  
491 recovery (*Badhiwala et al., 2021*). In our study, about 3.0% of 10 882 patients underwent  
492 surgery received surgery less than 24 hours after injury. Irrespective of the preference of  
493 clinicians on the use of early surgery, most hospitals do not have capacity to complete early



494 surgery of TSCI because they lacked experienced surgeons, imaging and laboratory  
495 equipment, and preanesthetic assessments (*Thompson et al., 2018*).

496

497 Another key area of managing TSCI is pharmacological interventions. Current  
498 pharmacological treatment principally relies on the off-label use of MPSS/MP, which remains  
499 contentious (*Robert R Hansebout, 2021*). Based upon the available evidence, the American  
500 Association of Neurological Surgeons and the Congress of Neurological Surgeons  
501 (AANS/CNS) stated that "administration of methylprednisolone (MP) for the treatment of  
502 acute spinal cord injury is not recommended" in 2013, and concluded that "there is  
503 insufficient evidence to make a recommendation" of using MP for treatment of patients with  
504 thoracic and lumbar fractures and spinal cord injury in 2019 (*Hurlbert et al., 2013; Arnold et*  
505 *al., 2019*). AOSpine organization on the other hand suggested a high-dose of MPSS/MP  
506 within 8 hours of acute SCI as a treatment option in their 2017 guideline (*Fehlings et al.,*  
507 *2017*). A retrospective population-based cohort study showed that 61.5% (rang from 40.7 to  
508 75.7) patients in South Korea between 2007 and 2017 received high-dose MPSS/MP within 8  
509 hours of acute spinal cord injury (*Choi et al., 2020*). In our study, we used 500mg of  
510 MPSS/MP as a threshold, based on the user guide, and found that 2 084 (14.1% of 14 754)  
511 TSCI patients were treated with a MPSS/MP of  $\geq 500$  mg, with only 641 (4.3% of 14 754)  
512 patients receiving it within 8 hours. The low rates of MPSS/MP use might reflect the  
513 conflicting recommendations in guidelines, the ongoing controversy in clinical management,  
514 limited resources in Chinese hospitals or a lack of awareness of best practice among the health

515 professionals treating TSCI patients (*Robert R Hansebout, 2021; Arnold et al., 2019*). Future  
516 high-quality randomized controlled trials or comprehensive observational studies based on  
517 large-scale electronic medical records are therefore needed, to explore the benefit of  
518 glucocorticoids treatment and help inform clinical care (*Liu et al., 2019*).

519

520 In addition to the low rates of early surgery and glucocorticoids use identified in this study,  
521 there was also found to be common use of treatments not part of recommended usual care in  
522 treating TSCI, such as neurotrophic drugs, dehydrants, and cathartics. Moreover, the  
523 AANS/CNS stated that "administration of GM-1 ganglioside (Sygen) for the treatment of  
524 acute SCI was not recommended" in 2013 and "there is insufficient evidence to make a  
525 recommendation" to use GM-1 ganglioside for patients with thoracic and lumbar fractures and  
526 spinal cord injury in 2019 (*Hurlbert et al., 2013; Arnold et al., 2019*). In this study, 9 590  
527 (65.0%) patients used neurotrophic drugs, of which 4 979 (51.9%) patients used GM-1  
528 ganglioside. The high rates of neurotrophic drugs in China might reflect the insufficient  
529 high-quality evidence to recommend for or against it.

530

531 Considering the costs related to acute TSCI, we found that the total costs on average were  
532 CNY ¥ 71.0k (USD \$ 11.5k), which was 3.9 times that of disposable income per capita of  
533 2013 (¥ 18.3k) (from the National Bureau of Statistics of the People's Republic of China) in  
534 China (*National Bureau of Statistics, 2021*). These costs are not only a large burden for  
535 patients and their families but also for the health providers. China has the largest number of

536 spinal cord injuries (3 739 610) and the second highest number of new cases (98 226) in 2016  
537 worldwide based on the 2016 GBD study (*GBD 2016 Traumatic Brain Injury and Spinal*  
538 *Cord Injury Collaborators, 2019*). The total costs decreased but the daily costs did not change  
539 significantly during the same period, which was consistent with the reduction in the average  
540 length of hospital stay. On the one hand, the cause of hospital stay reduction might be due to  
541 most hospitals improving the diagnosis and treatment or/and simplifying the process in and  
542 out of the hospital in China (*National Health Commission of the People's Republic of China,*  
543 *2019*). On the other hand, it might be a reflection of patients leaving the hospital earlier to  
544 save money, rather than due to improved care leading to early discharge. The early discharge  
545 from hospital might also lead to deep wound infection, wound dehiscence, and deep venous  
546 thrombosis (*Otero et al., 2016*).

547

548 Although this study was the largest known study of TSCI cases in China, it still possessed  
549 some limitations. First, it was not a population-based design, which meant that we could not  
550 calculate the incidence and prevalence rates of TSCI from the whole population. Another  
551 limitation in this study was the representative of sample. Although many hospitals were  
552 chosen across China, we did not use strict sampling rule so that our study is not a national  
553 representative one. Third, we only described the use of MPSS/MP in the part of  
554 glucocorticoids usage, without hydrocortisone and dexamethasone, due to the uncertainty  
555 whether other glucocorticoids were used in the treatment of TSCI itself.

556

## 557 **Conclusion**

558 This study revealed the epidemiological and clinical features of TSCI that occurred in China  
559 from 2013 to 2018. We found that the percentage of TSCI in hospitalized patients and the  
560 percentage of TSCI in hospitalized patients through the orthopaedic departments did not  
561 change significantly, but both these percentages increased when the number of TSCI per year  
562 was greater than 140. We described the treatment status about surgery, MPSS/MP,  
563 neurotrophic drugs, dehydrants and cathartics. The total costs for TSCI decreased, but the  
564 daily costs did not change significantly. Further studies should focus on assessing the efficacy  
565 and safety of current treatment strategies.

566

## 567 **Acknowledgments**

568 We thank Ping Yu from Library of Tianjin Medical University for developing the search  
569 strategies for TSCI. We thank Jiaxiao Shi, Xuanhao Fu, Wenxiang Li, Shibo Zhu, Linlin Shi,  
570 Weixiao Liu, Shenghui Shang, Shiyang Yuan, Guowang Li, Chao Sun, Huiquan Duan, Siyue  
571 Jia, Chaoyu Wang, Ziqian Xiang, Chao Li, Yigang Lv and Hao Yu for data collection. We  
572 thank Wei Li from Zhengzhou Orthopaedics Hospital, Yi Zhang from The First Affiliated  
573 Hospital of Zhengzhou University, Dantong Sun from The Eighth People's Hospital of  
574 Shenyang, Zanjing Zhai from Shanghai Ninth People's Hospital, Shanghai Jiao Tong  
575 University School of Medicine, Bo Wu from Shenyang Orthopaedics Hospital, Xueming  
576 Chen from Beijing Luhe Hospital, Affiliated to Capital Medical University, Xianze Sun from

577 The Third Hospital of Shijiazhuang, Zaixian Long from Xiushan People's Hospital, Si Yin  
578 from The First Affiliated Hospital of Xi'an Jiaotong University, Shenglin Zhang from Jinhu  
579 County People's Hospital. Zihua Wang from People's Hospital of Wuzhi County. Wei Ma  
580 and Xing Dai from Hanyin county people's hospital, Jidong Li from Hospital of Jingxing  
581 County, Dazhi Yang from Shenzhen People's Hospital, The Second Clinical Medical College  
582 of Jinan University, Jiancheng Zeng from West China Hospital, Sichuan University, and  
583 Deguo Teng from The Second People's Hospital of Shifang for data management.

#### 584 **Declaration of interests**

585 We declare no conflicts of interests.

#### 586 **Contributors**

587 SQF and HXZ designed the study and obtained funding. HXZ, YFL, LXC, YK and JHW did  
588 data analysis and the preparation of the manuscript. LL, ZWC and CZ did figures design. All  
589 authors read and approved the final version.

#### 590 **Funding**

591 National Key Research and Development Project of Stem Cell and Transformation Research  
592 (2019YFA0112100). This funding organization has no role in design and conduct of the study;  
593 collection, management, analysis, and interpretation of the data; preparation, review, or  
594 approval of the manuscript; and decision to submit the manuscript for publication.

#### 595 **Data sharing**

596 The data are available from the corresponding author on reasonable request.

## 597 **References**

- 598 Ahuja CS, Wilson JR, Nori S, Kotter M, Druschel C, Curt A, Fehlings MG. 2017. Traumatic spinal cord injury. *Nature reviews.*
- 599 *Disease primers* **3**:17018. doi: 10.1038/nrdp.2017.18, PMID: 28447605
- 600 Arnold PM, Anderson PA, Chi JH, Dailey AT, Dhall SS, Eichholz KM, Harrop JS, Hoh DJ, Qureshi S, Rabb CH, Raksin PB, Kaiser
- 601 MG, O'Toole JE. 2019. Congress of Neurological Surgeons Systematic Review and Evidence-Based Guidelines on the
- 602 Evaluation and Treatment of Patients With Thoracolumbar Spine Trauma: Pharmacological Treatment. *Neurosurgery*
- 603 **84**:E36-36E38. doi: 10.1093/neuros/nyy371, PMID: 30202962
- 604 Badhiwala JH, Wilson JR, Fehlings MG. 2019. Global burden of traumatic brain and spinal cord injury. *The Lancet. Neurology*
- 605 **18**:24-25. doi: 10.1016/S1474-4422(18)30444-7, PMID: 30497967
- 606 Badhiwala JH, Wilson JR, Witiw CD, Harrop JS, Vaccaro AR, Aarabi B, Grossman RG, Geisler FH, Fehlings MG. 2021. The
- 607 influence of timing of surgical decompression for acute spinal cord injury: a pooled analysis of individual patient
- 608 data. *The Lancet. Neurology* **20**:117-126. doi: 10.1016/S1474-4422(20)30406-3, PMID: 33357514
- 609 Choi SH, Sung CH, Heo DR, Jeong SY, Kang CN. 2020. Incidence of acute spinal cord injury and associated complications of
- 610 methylprednisolone therapy: a national population-based study in South Korea. *Spinal cord* **58**:232-237. doi:
- 611 10.1038/s41393-019-0357-2, PMID: 31527724
- 612 DXY Drugs Information. 2021. Medication Instructions for Methylprednisolone Sodium Succinate for Injection. *Available at:*
- 613 <http://drugs.dxy.cn/drug/93535.htm>. Accessed March 23,2021 .
- 614 Fehlings MG, Wilson JR, Tetreault LA, Aarabi B, Anderson P, Arnold PM, Brodke DS, Burns AS, Chiba K, Dettori JR, Furlan JC,
- 615 Hawryluk G, Holly LT, Howley S, Jeji T, Kalsi-Ryan S, Kotter M, Kurpad S, Kwon BK, Marino RJ, Martin AR, Massicotte E,
- 616 Merli G, Middleton JW, Nakashima H, Nagoshi N, Palmieri K, Skelly AC, Singh A, Tsai EC, Vaccaro A, Yee A, Harrop JS.
- 617 2017. A Clinical Practice Guideline for the Management of Patients With Acute Spinal Cord Injury: Recommendations

- 618 on the Use of Methylprednisolone Sodium Succinate. *Global spine journal* **7**:203S-211S. doi:  
619 10.1177/2192568217703085, PMID: 29164025
- 620 GBD 2016 Traumatic Brain Injury and Spinal Cord Injury Collaborators. 2019. Global, regional, and national burden of  
621 traumatic brain injury and spinal cord injury, 1990-2016: a systematic analysis for the Global Burden of Disease  
622 Study 2016. *The Lancet. Neurology* **18**:56-87. doi: 10.1016/S1474-4422(18)30415-0, PMID: 30497965
- 623 Gordon LG. 2020. China guidelines for pharmacoeconomic evaluations (2020). China Market Press. Beijing. 117-119.
- 624 Gross-Hemmi MH, Post MW, Ehrmann C, Fekete C, Hasnan N, Middleton JW, Reinhardt JD, Strøm V, Stucki G, International  
625 Spinal Cord Injury Community Survey (InSCI) Group. 2017. Study Protocol of the International Spinal Cord Injury  
626 (InSCI) Community Survey. *American journal of physical medicine & rehabilitation* **96**:S23-23S34. doi:  
627 10.1097/PHM.0000000000000647, PMID: 28059876
- 628 Güzelkütük Ü, Kesikburun S, Demir Y, Aras B, Özyörük E, Y İmaz B, Tan AK. 2015. Demographic and clinical characteristics of  
629 patients with traumatic cervical spinal cord injury: a Turkish hospital-based study. *Spinal cord* **53**:441-445. doi:  
630 10.1038/sc.2014.211, PMID: 25487242
- 631 Harrell Jr FE. 2015. Regression modeling strategies: with applications to linear models, logistic and ordinal regression, and  
632 survival analysis. Springer.
- 633 Hurlbert RJ, Hadley MN, Walters BC, Aarabi B, Dhall SS, Gelb DE, Rozzelle CJ, Ryken TC, Theodore N. 2013. Pharmacological  
634 therapy for acute spinal cord injury. *Neurosurgery* **72 Suppl 2**:93-105. doi: 10.1227/NEU.0b013e31827765c6, PMID:  
635 23417182
- 636 Institute for Health Metrics and Evaluation. 2021. Global Health Data Exchange. Available at:  
637 <http://ghdx.healthdata.org/gbd-results-tool>. Accessed March 23,2021 .

- 638 Joynt KE, Orav EJ, Jha AK. 2011. The association between hospital volume and processes, outcomes, and costs of care for  
639 congestive heart failure. *Annals of internal medicine* **154**:94-102. doi: 10.7326/0003-4819-154-2-201101180-00008,  
640 PMID: 21242366
- 641 Kirshblum SC, Burns SP, Biering-Sorensen F, Donovan W, Graves DE, Jha A, Johansen M, Jones L, Krassioukov A, Mulcahey  
642 MJ, Schmidt-Read M, Waring W. 2011. International standards for neurological classification of spinal cord injury  
643 (revised 2011). *The journal of spinal cord medicine* **34**:535-546. doi: 10.1179/204577211X13207446293695, PMID:  
644 22330108
- 645 Liu Z, Yang Y, He L, Pang M, Luo C, Liu B, Rong L. 2019. High-dose methylprednisolone for acute traumatic spinal cord injury:  
646 A meta-analysis. *Neurology* **93**:e841-841e850. doi: 10.1212/WNL.0000000000007998, PMID: 31358617
- 647 National Bureau of Statistics. 2021. Available at: <https://data.stats.gov.cn>. Accessed March 23,2021 .
- 648 National Bureau of Statistics. 2021. National Migrant Workers Monitoring Survey Report in 2013. Available at:  
649 [http://www.stats.gov.cn/tjsj/zxfb/201405/t20140512\\_551585.html](http://www.stats.gov.cn/tjsj/zxfb/201405/t20140512_551585.html). Accessed March 24, 2021. .
- 650 National Cancer Institute. 2020. Joinpoint Regression Program. Available at: <https://surveillance.cancer.gov/joinpoint/>  
651 Accessed April 2020 .
- 652 National Health Commission of the People's Republic of China. 2019. National Report on the Services, Quality and Safety in  
653 medical care system (2018). Science and Technical Literature Press. Beijing.
- 654 National Spinal Cord Injury Statistical Center. 2016. Spinal Cord Injury (SCI) Facts and Figures at a Glance. *The journal of*  
655 *spinal cord medicine* **39**:370-371. doi: 10.1080/10790268.2016.1177348, PMID: 27193177
- 656 Otero JE, Gholson JJ, Pugely AJ, Gao Y, Bedard NA, Callaghan JJ. 2016. Length of Hospitalization After Joint Arthroplasty:  
657 Does Early Discharge Affect Complications and Readmission Rates. *The Journal of arthroplasty* **31**:2714-2725. doi:  
658 10.1016/j.arth.2016.07.026, PMID: 27600301



- 659 Robert R Hansebout EK. 2021. Acute traumatic spinal cord injury. *Janet LW, ed. UpToDate. Waltham, MA: UpToDate Inc.*
- 660 <https://www.uptodate.com> (Accessed on March 23, 2021.) .
- 661 Roberts TT, Leonard GR, Cepela DJ. 2017. Classifications In Brief: American Spinal Injury Association (ASIA) Impairment Scale.
- 662 *Clinical orthopaedics and related research* **475**:1499-1504. doi: 10.1007/s11999-016-5133-4, PMID: 27815685
- 663 Salomaa V, Arstila M, Kaarsalo E, Ketonen M, Kuulasmaa K, Lehto S, Miettinen H, Mustaniemi H, Niemelä M, Palomäki P.
- 664 1992. Trends in the incidence of and mortality from coronary heart disease in Finland, 1983-1988. *American journal*
- 665 *of epidemiology* **136**:1303-1315. doi: 10.1093/oxfordjournals.aje.a116442, PMID: 1488958
- 666 Selvarajah S, Hammond ER, Haider AH, Abularrage CJ, Becker D, Dhiman N, Hyder O, Gupta D, Black JH 3rd, Schneider EB.
- 667 2014. The burden of acute traumatic spinal cord injury among adults in the united states: an update. *Journal of*
- 668 *neurotrauma* **31**:228-238. doi: 10.1089/neu.2013.3098, PMID: 24138672
- 669 Thompson C, Feldman DE, Mac-Thiong JM. 2018. Surgical management of patients following traumatic spinal cord injury:
- 670 Identifying barriers to early surgery in a specialized spinal cord injury center. *The journal of spinal cord medicine*
- 671 **41**:142-148. doi: 10.1080/10790268.2016.1165448, PMID: 27077578
- 672 von Elm E, Altman DG, Egger M, Pocock SJ, Gøtzsche PC, Vandenbroucke JP, STROBE Initiative. 2007. The Strengthening the
- 673 Reporting of Observational Studies in Epidemiology (STROBE) statement: guidelines for reporting observational
- 674 studies. *Annals of internal medicine* **147**:573-577. doi: 10.7326/0003-4819-147-8-200710160-00010, PMID:
- 675 17938396
- 676 Yuan S, Shi Z, Cao F, Li J, Feng S. 2018. Epidemiological Features of Spinal Cord Injury in China: A Systematic Review.
- 677 *Frontiers in neurology* **9**:683. doi: 10.3389/fneur.2018.00683, PMID: 30186222

- 678 Zárte-Kalfópulos B, Jiménez-González A, Reyes-Sánchez A, Robles-Ortiz R, Cabrera-Aldana EE, Rosales-Olivarez LM. 2016.
- 679 Demographic and clinical characteristics of patients with spinal cord injury: a single hospital-based study. *Spinal cord*
- 680 54:1016-1019. doi: 10.1038/sc.2016.41, PMID: 27067655

681 **Supplementary Information:**

682 **Epidemiological and Clinical Features, Treatment Status, and Economic Burden of**

683 **Traumatic Spinal Cord Injury in China**

684 \*Corresponding Author: Shiqing Feng, International Science and Technology Cooperation  
685 Base of Spinal Cord Injury, Department of orthopaedics, Tianjin Medical University General  
686 Hospital, Tianjin Medical University, Tianjin Key Laboratory of Spine and Spinal Cord,  
687 Tianjin, 300052, P.R. China; Department of orthopaedics, Qilu Hospital, Shandong  
688 University Centre for orthopaedics, Cheeloo College of Medicine, Shandong University, Jinan,  
689 Shandong, 250012, P.R. China. Tel/fax: +8602288366139. sqfeng@tmu.edu.cn.

---

**Section**

---

**Supplemental methods**

---

Figure supplement 1. Flow chart of case identification

---

Table supplement 1. American Spinal Injury Association (ASIA) Impairment Scale (AIS) grade

---

**Supplemental results**

---

Figure supplement 2. Trends in the percentage among TSCI patients of 23 hospitals from 2013 to 2018

---

Table supplement 2. Trends in the percentage of different subgroups among TSCI patients from 2013 to 2018

---

Figure supplement 3. The trends of APC in the percentage among TSCI patients from 23 hospitals

---

Table supplement 3. The use of MPSS/MP among TSCI patients during hospitalization

---

Table supplement 4. The use of neurotrophic drugs, dehydrants and cathartics among TSCI patients during hospitalization

---

Table supplement 5. Trends in the length of hospital stay among acute TSCI patients from 2013 to 2018

---

Table supplement 6. Trends in the costs among acute TSCI patients from 2013 to 2018

---

690

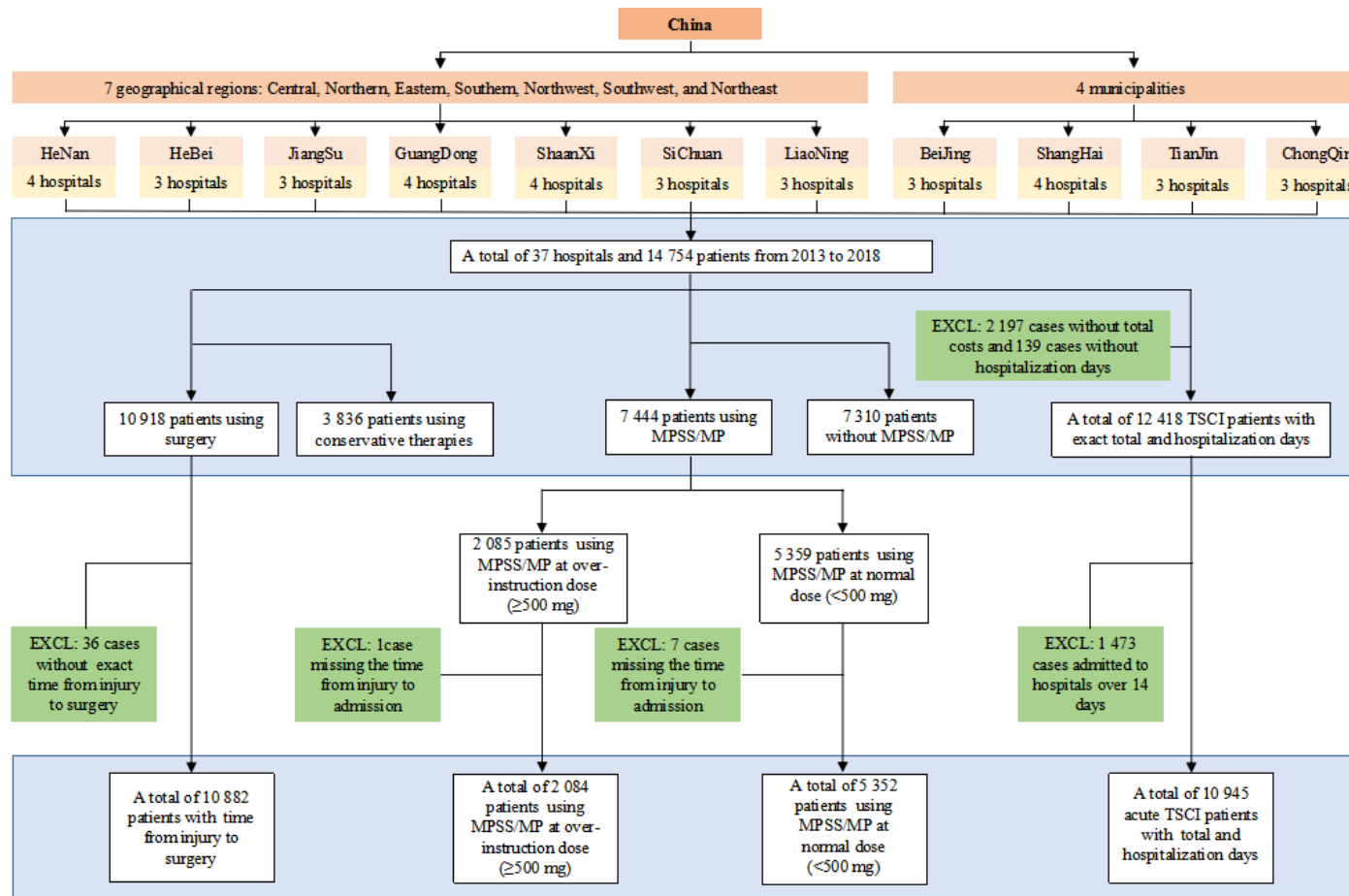


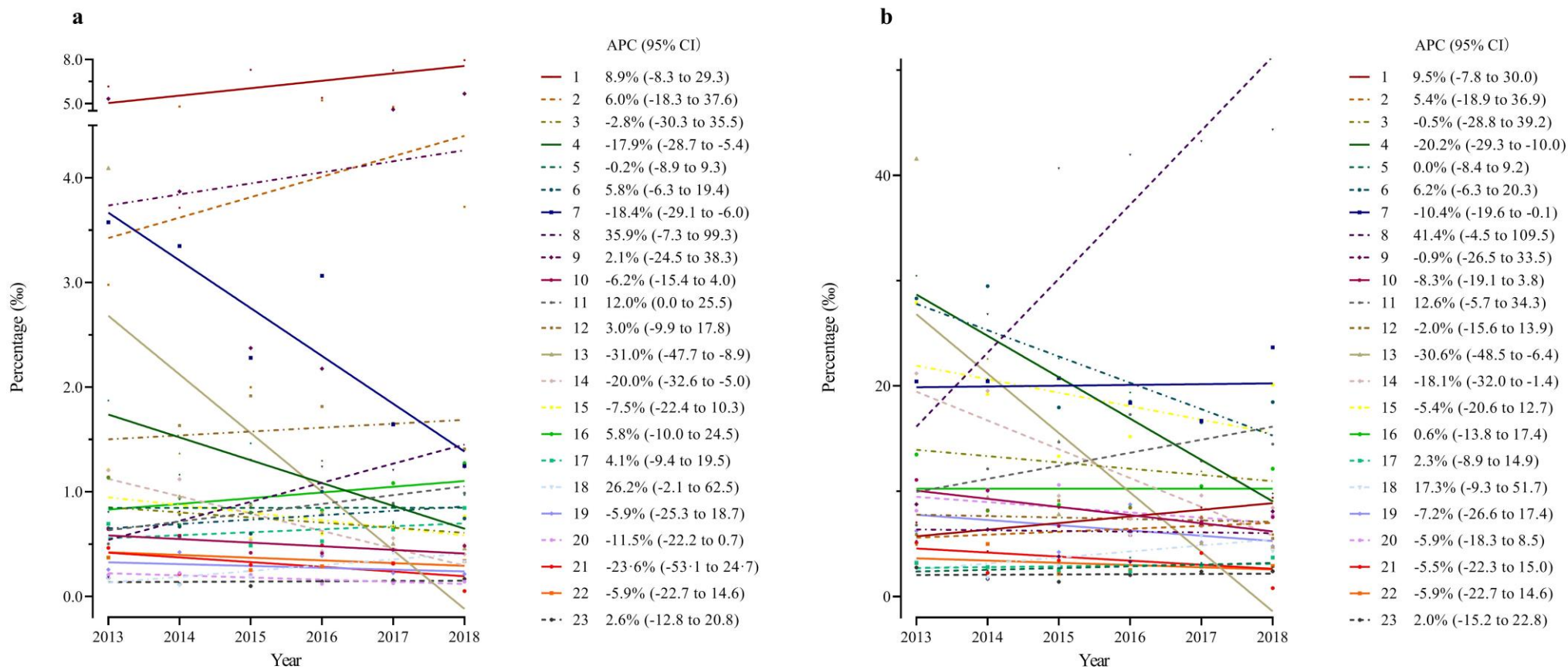
Figure supplement 1. Flow chart of case identification

In the end, a total of 14,754 patients from 37 hospitals in China were included in this study from 2013 to 2018. And the final number of cases included in the "surgery timing", the use of MPSS/MP, and the costs of acute TSCI during hospitalization were shown in the above figure. TSCI=traumatic spinal cord injury. EXCL=excluded. MPSS/MP=methylprednisolone sodium succinate/methylprednisolone.

695 **Table supplement 1. American Spinal Injury Association (ASIA) Impairment Scale (AIS) grade**

AIS grade	Category	Description
A	Complete	No motor or sensory function is preserved in the sacral segments S4–S5
B	Incomplete	Sensory function preserved but not motor function is preserved below the neurological level and includes the sacral segments S4–S5
C	Incomplete	Motor function is preserved below the neurological level, and more than half of key muscles below the neurological level have a muscle grade less than 3
D	Incomplete	Motor function is preserved below the neurological level, and at least half of key muscles below the neurological level have a muscle grade of 3 or more
E	Normal	Motor and sensory function are normal, but still may have abnormal reflexes or other neurologic phenomena <sup>a</sup> .

696 <sup>a</sup> AIS grade E referred to the International standards for neurological classification of spinal cord injury [revised  
697 2011] and an article from *J Spinal Cord Med* [Roberts TT, Leonard GR, Cepela DJ. Classifications In Brief:  
698 American Spinal Injury Association (ASIA) Impairment Scale. *Clin Orthop Relat Res* 2017;**475**:1499-504.



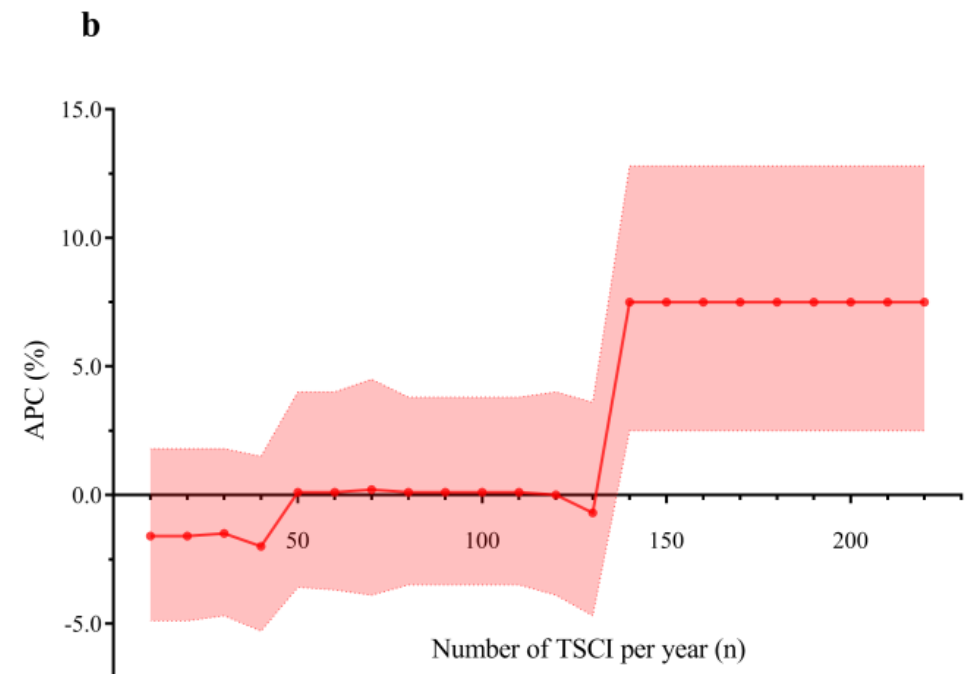
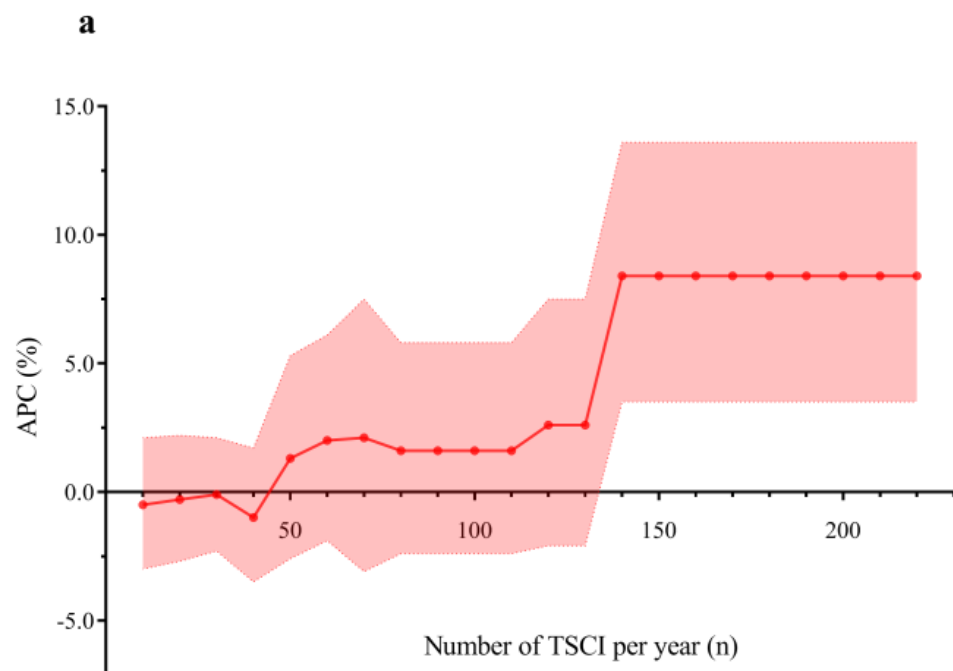
99 **Figure supplement 2. Trends in the percentage among TSCI patients of 23 hospitals from 2013 to 2018**

00 (a) Trends in the percentage of TSCI in hospitalized patients of each hospital from 23 hospitals. (b) Trends in the percentage of TSCI in hospitalized patients through the orthopaedic departments  
 01 of each hospital from 23 hospitals. TSCI=traumatic spinal cord injury. APC=annual percentage change. 95% CI=95% confidence interval.

02 **Table supplement 2. Trends in the percentage of different subgroups among TSCI patients from 2013 to 2018**

Category	2013	2014	2015	2016	2017	2018	APC (95% CI)
<b>TSCI patients/Hospitalized patients</b>							
Hospital type							
General hospital	0.000677437	0.000731737	0.000650481	0.000650376	0.000584477	0.000574924	-4.2 (-7.2, -1.0)
Orthopaedic hospital	0.004146887	0.004100949	0.003582044	0.004432452	0.004789523	0.004711542	3.8 (-2.2, 10.3)
Economic level							
Above the PCDI	0.000764280	0.000854571	0.000837578	0.000813096	0.000837774	0.000864237	1.5 (-1.1, 4.2)
Below the PCDI	0.001961198	0.001901074	0.001352715	0.002064160	0.001701302	0.001434080	-4.1 (-14.5, 7.6)
<b>TSCI patients/Orthopaedic patients</b>							
Hospital type							
General hospital	0.009496961	0.010165120	0.008524518	0.008521055	0.007753479	0.007722081	-5.1 (-8.4, -1.7)
Orthopaedic hospital	0.006207775	0.006087330	0.005567732	0.006757954	0.007892531	0.007828871	6.3 (-0.1, 13.1)
Economic level							
Above the PCDI	0.007594290	0.008133067	0.007529879	0.007149736	0.007625364	0.007885594	-0.2 (-3.3, 3.1)
Below the PCDI	0.010551825	0.010410185	0.006861413	0.010631962	0.008536560	0.007279922	-5.6 (-16.5, 6.8)

03 TSCI=traumatic spinal cord injury. APC=annual percentage change. 95% CI=95% confidence interval. PCDI=per capita disposable income.



**Figure supplement 3. The trends of APC in the percentage among TSCI patients from 23 hospitals**

(a) The trend of APC in the percentage among TSCI patients in hospitalized patients of different number of TSCI per year. (b) The trend of APC in the percentage among TSCI patients in hospitalized patients through the orthopaedic departments of different number of TSCI per year. The value of the horizontal axis represented the annual TSCI patients admitted. The APC corresponding to the points referred to the comprehensive calculation of APC from 2013 to 2018 of all eligible hospitals whose annual TSCI patients were more than the corresponding number of horizontal axis in 23 hospitals. Shaded regions represent 95% confidence interval. APC=annual percentage change. TSCI=traumatic spinal cord injury.



**Table supplement 3. The use of MPSS/MP among TSCI patients during hospitalization**

Category <sup>a</sup>	accumulated time≤2 d	3 d ≤accumulated time≤5 d	accumulated time≥6 d	No accumulated time <sup>b</sup>	Total
Use of MPSS/MP at over-instruction dose (≥500 mg)					
≤8 h	--	--	--	641	641
>8 h	--	--	--	1 443	1 443
Total	--	--	--	2 084	2 084
Use of MPSS/MP with normal instruction dose (<500 mg)					
Total					5 352
Continuous use of MPSS/MP with normal instruction dose					
≤1.6 d	495	439	320	--	1 254
1.6-9.0 d	897	923	629	--	2 449
≥9.0 d	505	553	251	--	1 309
Total	1 897	1 915	1 200	--	5 012
Intermittent use of MPSS/MP with normal instruction dose					
≤1.6 d	15	63	75	--	153
1.6-9.0 d	11	62	86	--	159
≥9.0 d	4	9	15	--	28
Total	30	134	176	--	340

<sup>a</sup>The rows represented the start time of using MPSS/MP (h=hours, d=days), the columns represented the accumulated time of medication (d=days), and the figures represented the number of TSCI patients. <sup>b</sup> There is no accumulated time about use of MPSS/MP at over-instruction dose (≥500 mg). TSCI=traumatic spinal cord injury. MPSS/MP=methylprednisolone sodium succinate/methylprednisolone.

722 **Table supplement 4. The use of neurotrophic drugs, dehydrants and cathartics among TSCI patients**

723 **during hospitalization**

Category	Number of patients, n (%) <sup>a</sup>
Neurotrophic drugs	9 590 (65.0)
GM-1 ganglioside	4 979 (51.9)
Mouse nerve growth factor	2 785 (29.0)
Mecobalamin	2 580 (26.9)
Neurotropin	1 927 (20.1)
Cattle encephalon glycoside and igitin	550 (5.7)
Cobamamide	263 (2.7)
Others <sup>b</sup>	71 (0.7)
Dehydrants	8 898 (60.3)
Mannitol	7 558 (84.9)
Glycerin fructose	1 516 (17.0)
Sodium aescinate	366 (4.1)
Cathartics	1 508 (10.2)
Glycerin or glycerine enemas	1 434 (95.1)
Lactulose oral solution	128 (8.5)
Maren soft capsule	25 (1.7)

724 <sup>a</sup>The overall use rate of neurotrophic drugs, dehydrants and cathartics was calculated by the proportion among  
725 TSCI patients. The utilization rate of each drug was calculated by the proportion among patients who used  
726 neurotrophic drugs, dehydrants or cathartics. <sup>b</sup>"others" included "Muscular amino acids and nucleosides" and/or  
727 "Deproteinized calf blood extractive". TSCI=traumatic spinal cord injury.

28 **Table supplement 5. Trends in the length of hospital stay among acute TSCI patients from 2013 to 2018<sup>a</sup>**

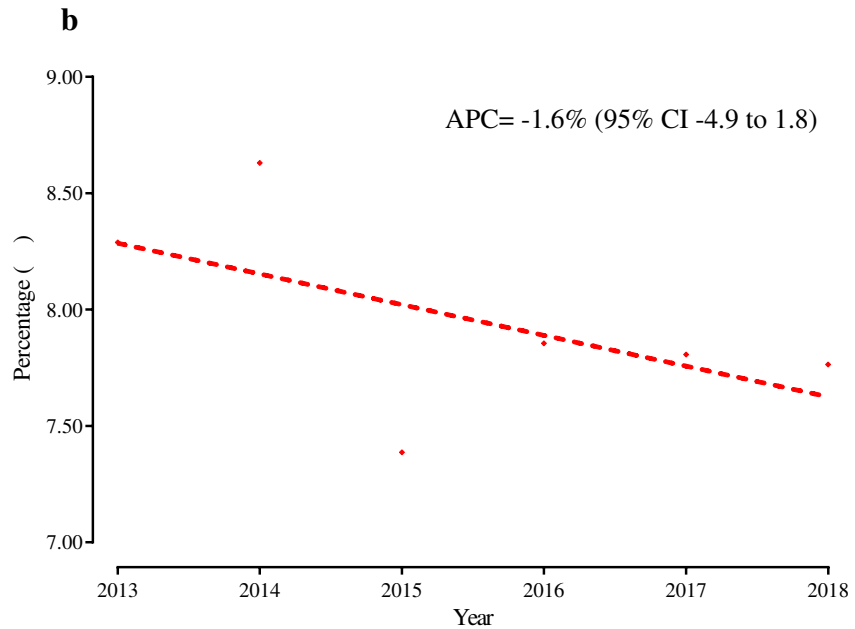
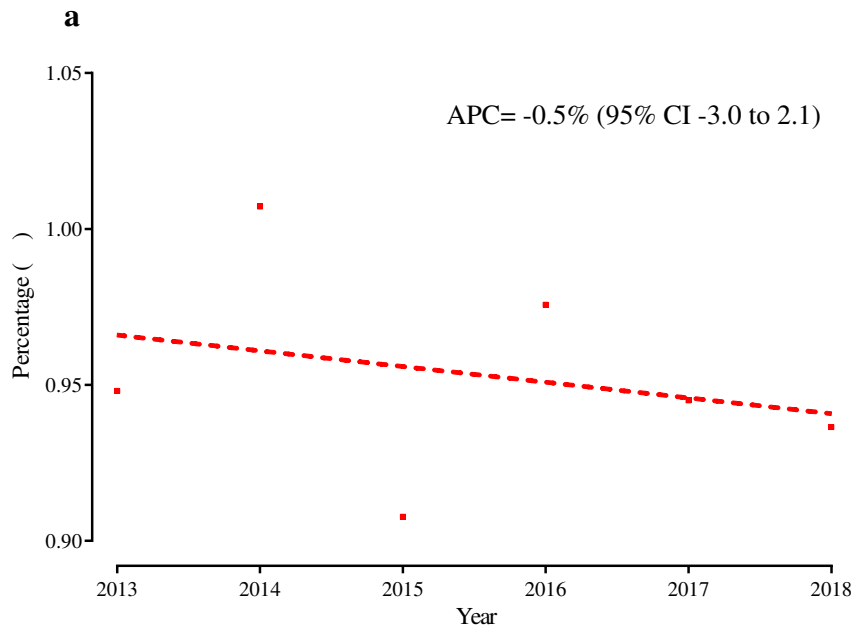
Category	Overall	2013	2014	2015	2016	2017	2018	APC (95% CI)
Gender, Mean (SD)								
Men	20.4 (27.1)	21.9 (20.7)	23.1 (40.1)	20.1 (23.7)	21.2 (25.8)	19.6 (28.6)	17.7 (17.9)	-4.2 (-7.5, -0.8)
Women	18.5 (23.2)	19.4 (16.8)	20.1 (19.5)	20.4 (26.4)	19.9 (25.4)	18.1 (30.3)	14.6 (15.0)	-4.9 (-10.7, 1.3)
Total	19.9 (26.2)	21.3 (19.8)	22.4 (36.5)	20.1 (24.3)	20.9 (25.7)	19.3 (29.0)	16.8 (17.2)	-4.5 (-8.1, -0.6)
Age groups, Mean (SD)								
15 years~	22.4 (31.6)	20.9 (14.9)	25.0 (26.2)	20.5 (24.0)	23.2 (22.8)	26.5 (64.6)	19.0 (16.2)	-0.5 (-9.5, 9.3)
25 years~	21.5 (25.3)	25.8 (29.4)	25.2 (29.8)	21.9 (30.2)	20.2 (19.1)	19.6 (22.2)	18.8 (21.6)	-6.7 (-8.8, -4.5)
35 years~	21.1 (35.1)	21.8 (22.2)	24.0 (62.8)	21.6 (28.7)	21.0 (27.6)	18.7 (21.8)	19.4 (23.7)	-3.8 (-7.4, -0.1)
45 years~	20.9 (25.9)	20.6 (14.7)	22.5 (23.9)	22.1 (27.4)	21.8 (29.0)	20.8 (32.4)	18.0 (18.5)	-2.6 (-7.1, 2.2)
55 years~	18.6 (19.9)	20.7 (19.2)	21.7 (27.6)	16.8 (14.5)	20.6 (22.5)	16.7 (20.0)	16.2 (12.5)	-5.0 (-11.1, 1.5)
≥ 65 years	16.9 (20.3)	19.3 (19.1)	16.9 (14.6)	18.1 (17.6)	19.5 (26.6)	18.2 (27.1)	12.5 (9.5)	-5.2 (-14.0, 4.5)

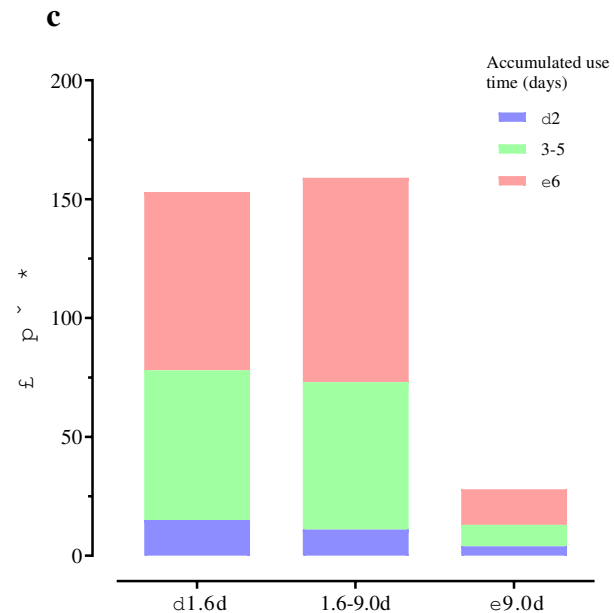
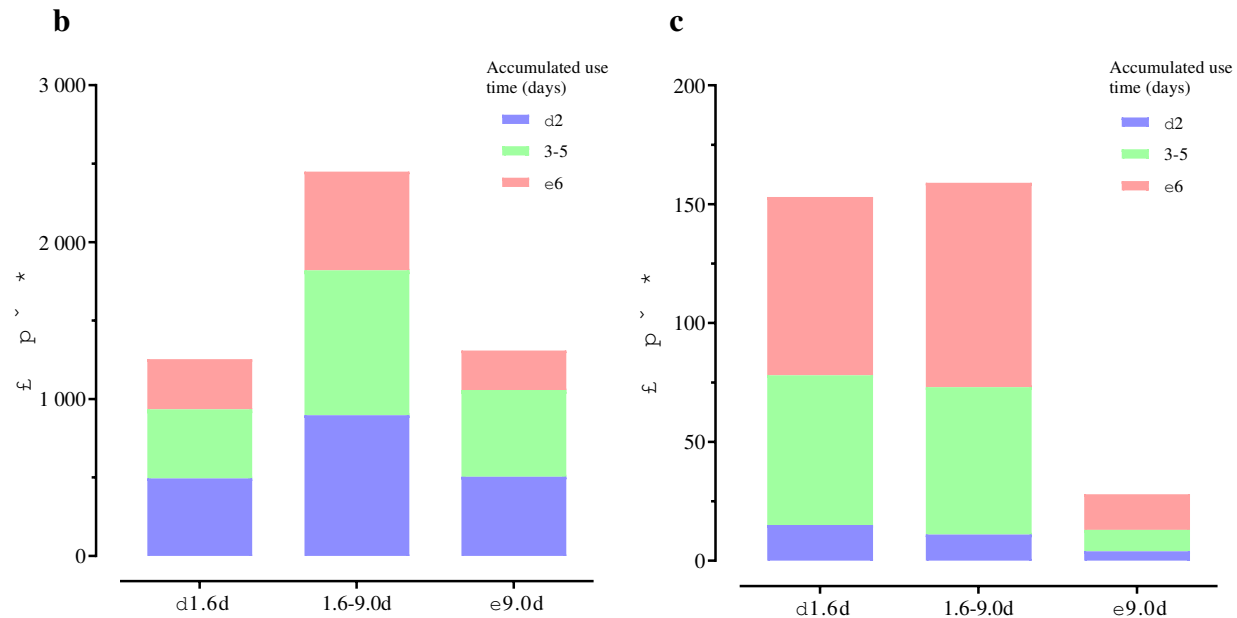
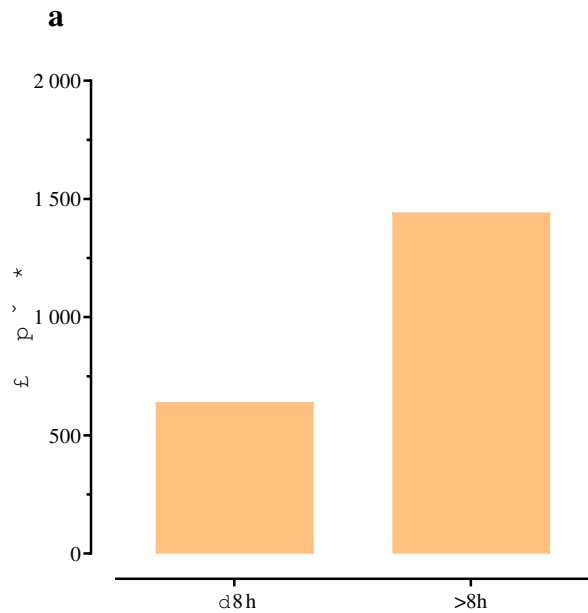
29 <sup>a</sup>Length of hospital stay was measured in days.

30 **Table supplement 6. Trends in the costs among acute TSCI patients from 2013 to 2018**

Category	2013	2014	2015	2016	2017	2018	APC (95% CI)
<b>Total costs (CNY ¥ , thousand), Mean (SD)</b>							
Gender							
Men	85.0 (79.8)	81.2 (85.1)	72.7 (62.2)	72.3 (64.3)	68.4 (75.4)	68.0 (67.3)	-4.6 (-6.5, -2.6)
Women	67.8 (58.4)	72.9 (108.0)	67.6 (69.3)	62.0 (54.1)	57.9 (47.1)	54.2 (46.3)	-5.3 (-8.4, -2.1)
Total	80.6 (75.3)	79.4 (90.8)	71.5 (63.8)	69.8 (62.2)	65.8 (69.7)	64.4 (62.8)	-4.8 (-6.2, -3.4)
Age groups							
15 years~	84.1 (58.9)	104.8 (201.5)	80.4 (70.1)	75.6 (51.9)	80.0 (96.2)	78.3 (59.8)	-3.5 (-10.2, 3.8)
25 years~	96.3 (100.6)	95.5 (93.9)	71.2 (66.4)	75.8 (61.4)	73.5 (56.8)	68.8 (46.1)	-6.6 (-11.8, -1.2)
35 years~	83.5 (90.1)	81.1 (98.9)	72.8 (53.8)	75.4 (70.7)	69.3 (51.4)	72.3 (97.6)	-3.3 (-5.8, -0.6)
45 years~	86.1 (68.6)	75.3 (61.9)	78.3 (68.8)	69.9 (69.1)	67.7 (61.4)	68.9 (61.4)	-4.3 (-7.2, -1.4)
55 years~	73.3 (65.7)	76.0 (74.8)	64.3 (56.2)	68.3 (53.7)	57.0 (46.4)	61.2 (52.8)	-4.8 (-8.9, -0.4)
≥ 65 years	61.6 (57.1)	63.6 (64.7)	63.7 (68.4)	59.0 (50.6)	62.4 (110.9)	50.3 (44.3)	-3.2 (-7.8, 1.6)
<b>Daily costs (CNY ¥ , thousand), Mean (SD)</b>							
Gender							
Men	4.5 (3.4)	4.3 (3.4)	4.4 (3.1)	4.2 (2.8)	4.5 (3.9)	4.5 (3.6)	0.3 (-1.8, 2.4)
Women	3.9 (3.6)	4.4 (3.9)	4.2 (3.5)	4.0 (3.3)	4.3 (3.3)	4.5 (3.5)	1.7 (-1.6, 5.2)
Total	4.4 (3.5)	4.3 (3.5)	4.3 (3.2)	4.2 (2.9)	4.4 (3.8)	4.5 (3.6)	0.5 (-1.2, 2.2)
Age groups							
15 years~	4.4 (3.0)	5.1 (5.6)	4.3 (2.6)	4.3 (3.2)	4.6 (3.0)	4.8 (3.0)	0.4 (-4.6, 5.6)
25 years~	4.6 (3.6)	4.6 (3.4)	4.4 (3.8)	4.3 (2.8)	4.7 (4.7)	4.5 (2.7)	-0.2 (-2.6, 2.2)
35 years~	4.6 (4.2)	4.5 (3.8)	4.4 (2.9)	4.5 (3.2)	4.7 (3.2)	4.3 (2.8)	-0.5 (-2.7, 1.7)
45 years~	4.6 (3.2)	4.3 (3.4)	4.6 (3.7)	4.1 (2.6)	4.5 (4.5)	4.5 (3.0)	-0.3 (-3.5, 3.1)
55 years~	4.2 (2.9)	4.2 (3.1)	4.1 (2.7)	4.1 (3.2)	4.2 (3.3)	4.5 (4.9)	1.0 (-1.1, 3.2)
≥ 65 years	3.8 (3.9)	3.9 (2.9)	4.0 (3.1)	3.8 (2.5)	4.2 (3.1)	4.5 (3.5)	2.9 (0.1, 5.9)

31 TSCI=traumatic spinal cord injury. APC=annual percentage change. 95% CI=95% confidence interval. CNY=Chinese Yuan. SD=standard deviation.





China

7 geographical regions: Central, Northern, Eastern, Southern, Northwest, Southwest, and Northeast

4 municipalities

HeNan 4 hospitals, HeBei 3 hospitals, JiangSu 3 hospitals, GuangDong 4 hospitals, ShanXi 4 hospitals, SiChuan 3 hospitals, LiaoNing 3 hospitals, BeiJing 3 hospitals, ShangHai 4 hospitals, TianJin 3 hospitals, ChongQin 3 hospitals

A total of 37 hospitals and 14 754 patients from 2013 to 2018

10 918 patients using surgery

3 836 patients using conservative therapies

7 444 patients using MPSS/MP

7 310 patients without MPSS/MP

EXCL: 2 197 cases without total costs and 139 cases without hospitalization days

A total of 12 418 TSCI patients with exact total and hospitalization days

EXCL: 36 cases without exact time from injury to surgery

EXCL: 1 case missing the time from injury to admission

EXCL: 7 cases missing the time from injury to admission

EXCL: 1 473 cases admitted to hospitals over 14 days

A total of 10 882 patients with time from injury to surgery

A total of 2 084 patients using MPSS/MP at over-instruction dose ( $\geq 500$  mg)

A total of 5 352 patients using MPSS/MP at normal dose ( $< 500$  mg)

A total of 10 945 acute TSCI patients with total and hospitalization days

