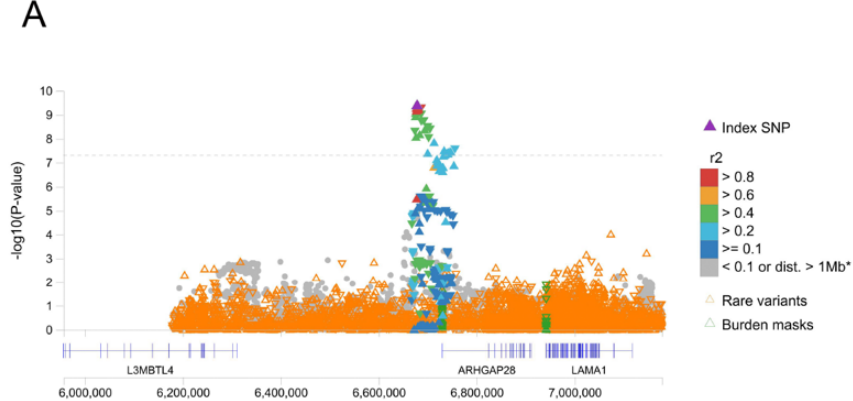


SUPPLEMENTAL FILE 2.

Praveen et al.

Supplementary Figure 2: Regional plots for novel common (MAF $\geq 1\%$) loci identified in hearing loss meta-analysis and forest plots corresponding to the index variant at each novel locus. (Panels A through R, pages 1-9.)

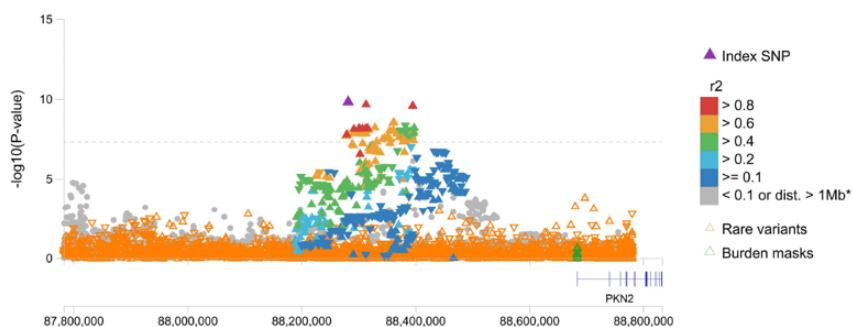
A



Association with 18:6678716:T:A

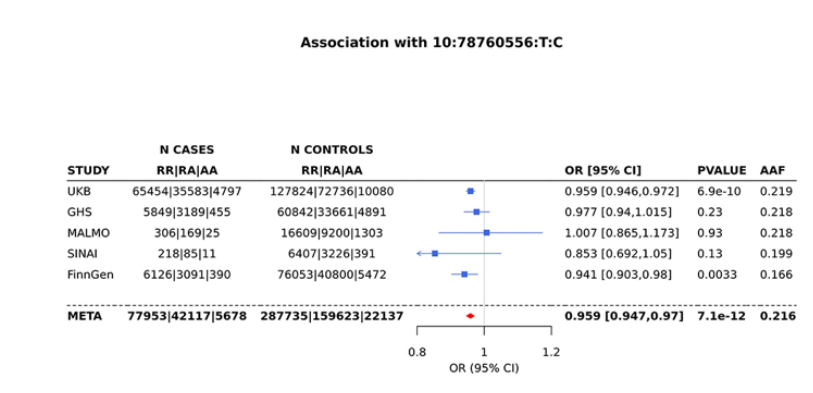
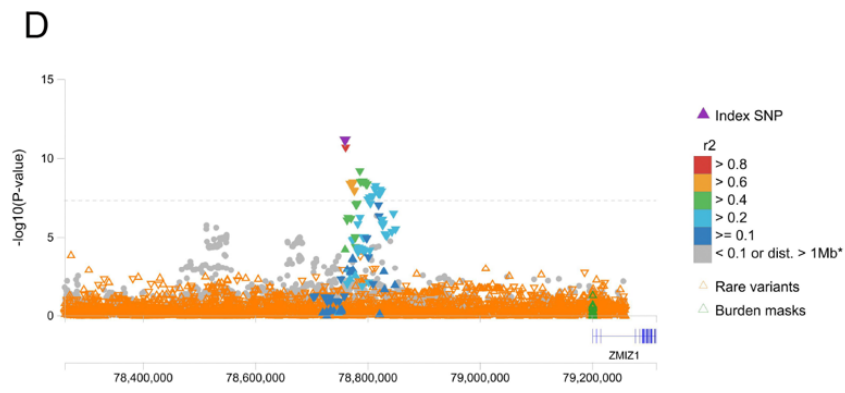
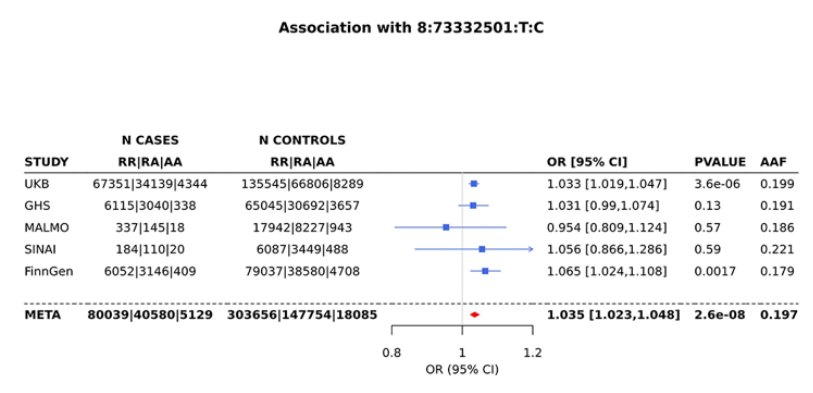
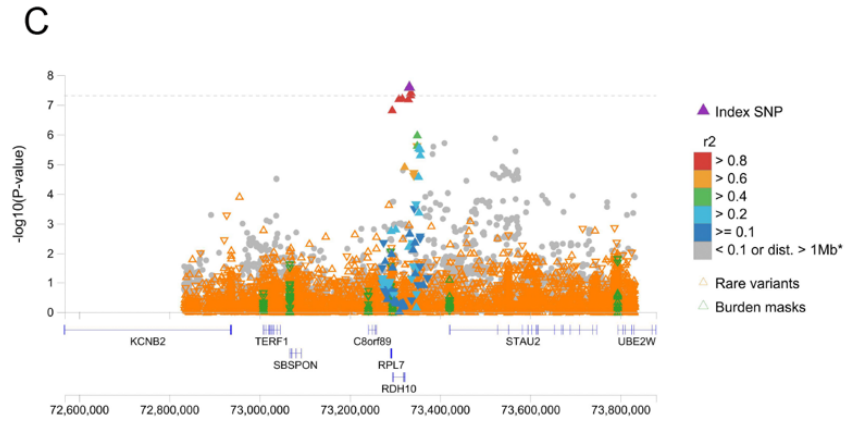
STUDY	N CASES RR RA AA	N CONTROLS RR RA AA	OR [95% CI]	PVALUE	AAF
UKB	27707 52818 25309	56254 105268 49118	1.025 [1.014,1.036]	6.6e-06	0.485
GHS	2313 4796 2384	24697 49910 24787	1.019 [0.986,1.052]	0.26	0.49
MALMO	102 259 139	6266 13459 7387	1.082 [0.949,1.233]	0.24	0.512
SINAI	72 155 87	2589 4998 2437	1.162 [0.98,1.378]	0.083	0.484
FinnGen	2340 4803 2464	32356 61113 28856	1.086 [1.054,1.12]	1.1e-07	0.565
META	32534 62831 30383	122162 234748 112585	1.031 [1.021,1.042]	4.3e-10	0.49

B

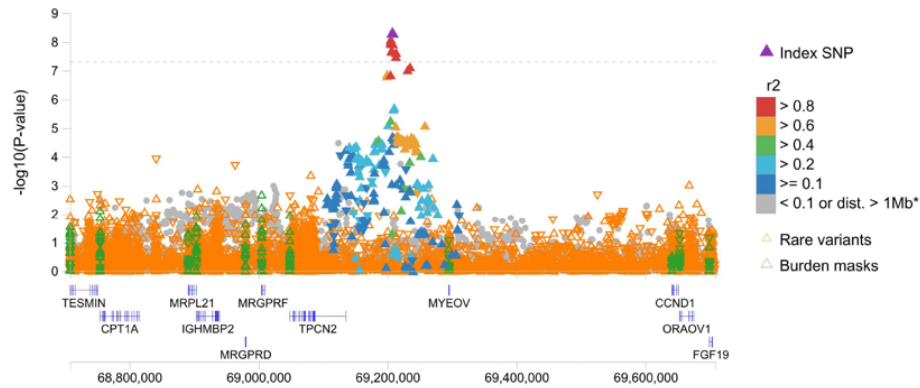


Association with 1:88282464:G:A

STUDY	N CASES RR RA AA	N CONTROLS RR RA AA	OR [95% CI]	PVALUE	AAF
UKB	8159 42859 54816	17370 86039 107231	1.036 [1.024,1.049]	6.1e-09	0.716
GHS	706 3759 5028	7909 39801 51684	1.04 [1.004,1.077]	0.031	0.717
MALMO	48 217 235	2597 11506 13009	0.986 [0.859,1.133]	0.85	0.684
SINAI	17 107 190	577 3560 5887	1.049 [0.851,1.294]	0.65	0.738
FinnGen	794 3936 4877	10524 50713 61088	1.028 [0.996,1.062]	0.084	0.656
META	9724 50878 65146	38977 191619 238899	1.036 [1.024,1.047]	1.6e-10	0.714



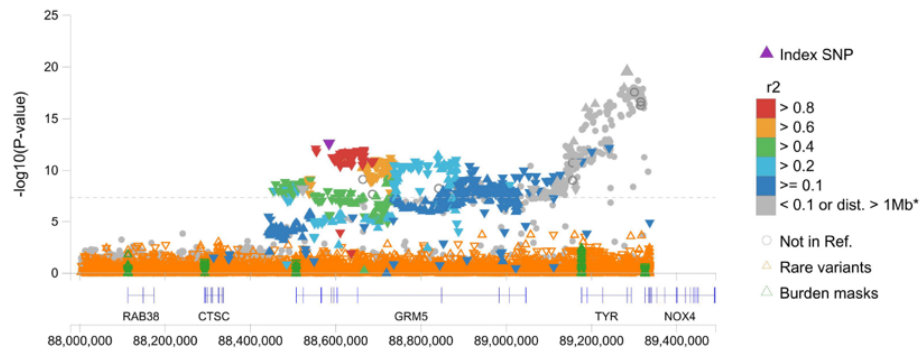
E



Association with 11:69208057:T:C

STUDY	N CASES		N CONTROLS		OR [95% CI]	PVALUE	AAF
	RR	RA AA	RR	RA AA			
UKB	15357	49729 40748	31512	99753 79375	1.031 [1.02,1.043]	7.1e-08	0.616
GHS	1285	4431 3777	14133	46571 38690	1.041 [1.008,1.076]	0.015	0.622
MALMO	74	257 169	4061	12819 10232	0.925 [0.813,1.053]	0.24	0.611
SINAI	35	143 136	1246	4417 4361	0.978 [0.822,1.164]	0.81	0.648
FinnGen	1375	4519 3713	17939	57811 46575	1.02 [0.988,1.053]	0.23	0.658
META	18126	59079 48543	68891	221371 179233	1.03 [1.02,1.041]	5.4e-09	0.618

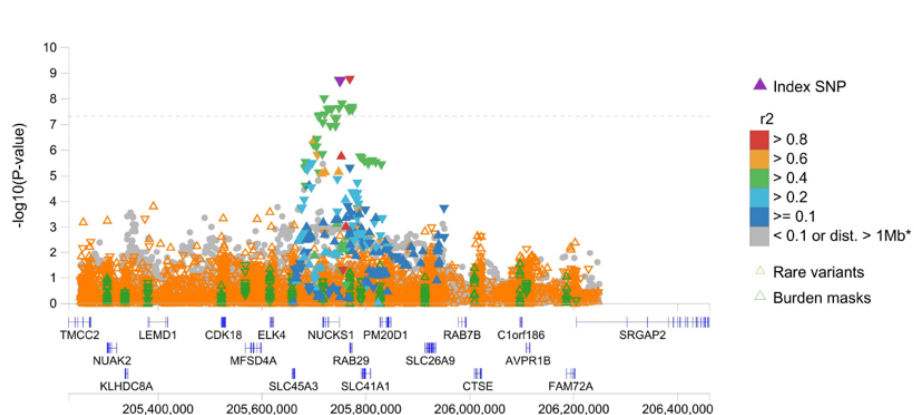
F



Association with 11:88585758:A:G

STUDY	N CASES		N CONTROLS		OR [95% CI]	PVALUE	AAF
	RR	RA AA	RR	RA AA			
UKB	72997	29769 3068	143206	60935 6499	0.954 [0.94,0.968]	1.2e-10	0.174
GHS	6796	2451 246	69389	27358 2647	0.934 [0.894,0.975]	0.0019	0.163
FinnGen	6792	2571 243	85262	33728 3335	0.957 [0.912,1.004]	0.073	0.113
META	86585	34791 3557	297857	122021 12481	0.952 [0.94,0.965]	2.7e-13	0.17

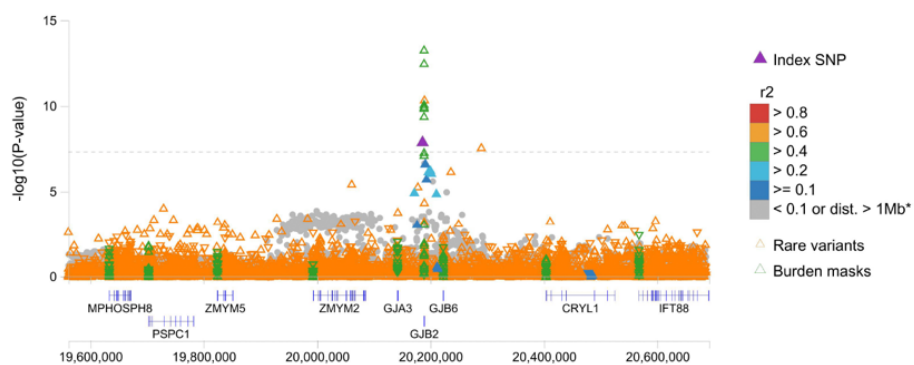
G



Association with 1:205751355:G:A

STUDY	N CASES		N CONTROLS		OR [95% CI]	PVALUE	AAF
	RR RA AA		RR RA AA				
UKB	22164 52368 31302		42556 104212 63872		0.969 [0.959,0.98]	2.1e-08	0.548
GHS	1893 4664 2936		19127 48859 31408		0.965 [0.934,0.996]	0.026	0.558
MALMO	89 240 171		5396 13374 8342		1.12 [0.985,1.273]	0.083	0.548
SINAI	62 147 105		1739 4965 3320		0.983 [0.825,1.171]	0.85	0.566
FinnGen	2086 4781 2739		25957 60784 35585		0.979 [0.949,1.009]	0.17	0.582
META	26294 62200 37253		94775 232194 142527		0.971 [0.961,0.98]	2e-09	0.549

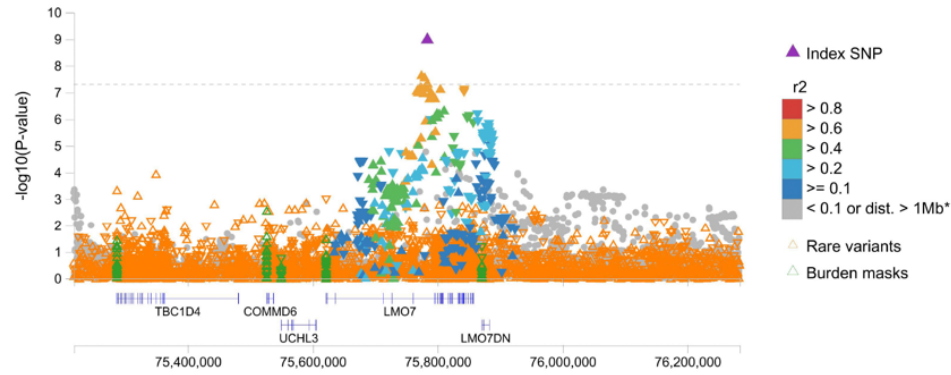
H



Association with 13:20186225:A:T

STUDY	N CASES		N CONTROLS		OR [95% CI]	PVALUE	AAF
	RR RA AA		RR RA AA				
UKB	101833 3957 44		203340 7230 70		1.105 [1.059,1.152]	3.1e-06	0.018
GHS	9083 402 8		95319 4042 33		1.066 [0.952,1.193]	0.27	0.022
MALMO	483 16 1		26212 893 7		1.093 [0.657,1.819]	0.73	0.017
SINAI	305 9 0		9724 299 1		0.991 [0.48,2.045]	0.98	0.019
FinnGen	9244 359 3		118685 3613 27		1.279 [1.127,1.451]	0.00014	0.015
META	120948 4743 56		453280 16077 138		1.114 [1.073,1.156]	1.4e-08	0.018

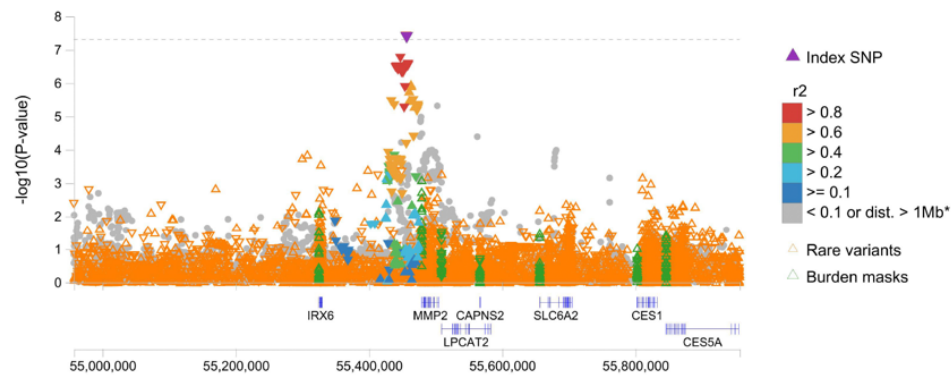
I



Association with 13:75783745:C:G

STUDY	N CASES		N CONTROLS		OR [95% CI]	PVALUE	AAF
	RR RA AA		RR RA AA				
UKB	34162 51780 19892		69302 102980 38358		1.029 [1.018,1.04]	3.3e-07	0.429
GHS	3165 4608 1720		33472 48578 17344		1.023 [0.99,1.056]	0.17	0.418
MALMO	163 235 102		8593 13357 5162		1.006 [0.884,1.143]	0.93	0.435
SINAI	120 149 45		3910 4580 1534		1.044 [0.881,1.238]	0.62	0.379
FinnGen	2956 4746 1904		39424 60042 22860		1.054 [1.023,1.087]	0.00069	0.432
META	40566 61518 23663		154701 229537 85258		1.031 [1.021,1.041]	1.1e-09	0.428

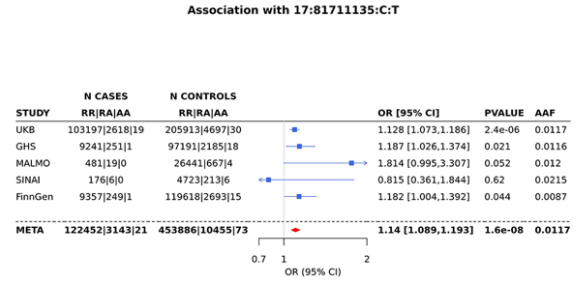
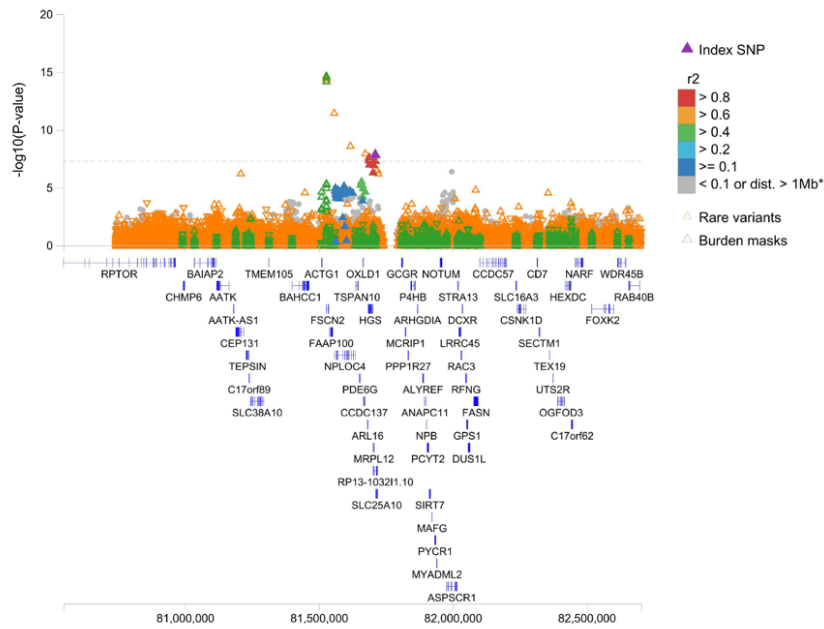
J



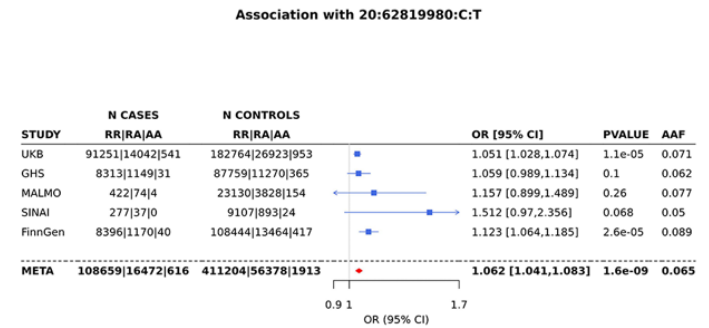
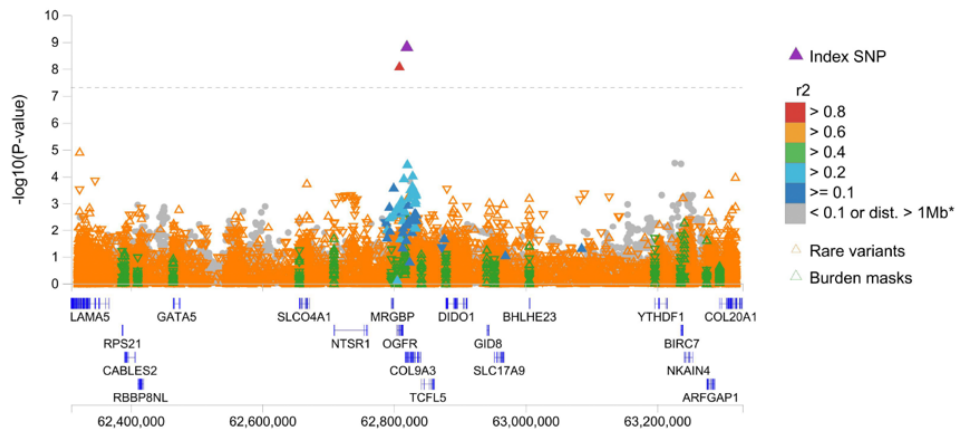
Association with 16:55456852:T:A

STUDY	N CASES		N CONTROLS		OR [95% CI]	PVALUE	AAF
	RR RA AA		RR RA AA				
UKB	67703 33964 4167		133069 68867 8704		0.968 [0.955,0.981]	1.8e-06	0.203
GHS	6009 3097 387		62233 32802 4359		0.973 [0.936,1.012]	0.17	0.207
MALMO	319 163 18		17452 8622 1038		1.013 [0.862,1.19]	0.88	0.196
SINAI	202 101 11		6337 3256 431		0.942 [0.769,1.154]	0.57	0.203
FinnGen	6248 2999 359		77963 39388 4974		0.95 [0.913,0.988]	0.011	0.176
META	80481 40324 4942		297054 152935 19506		0.967 [0.955,0.978]	3.9e-08	0.203

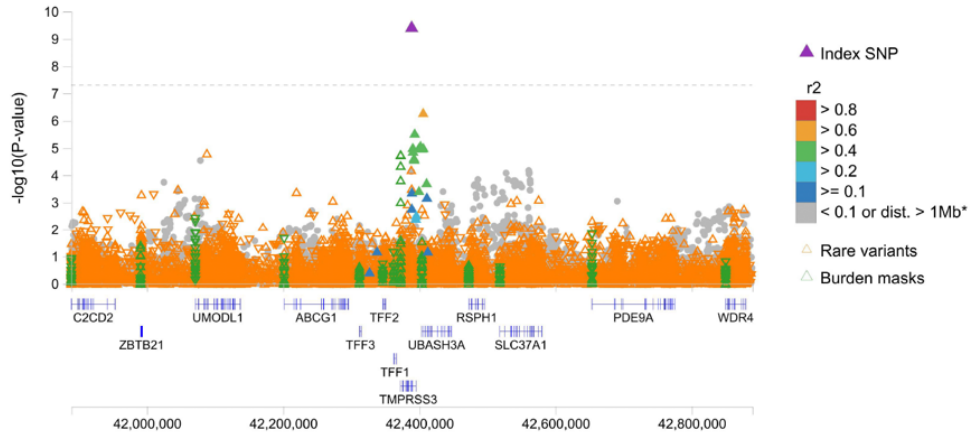
K



L



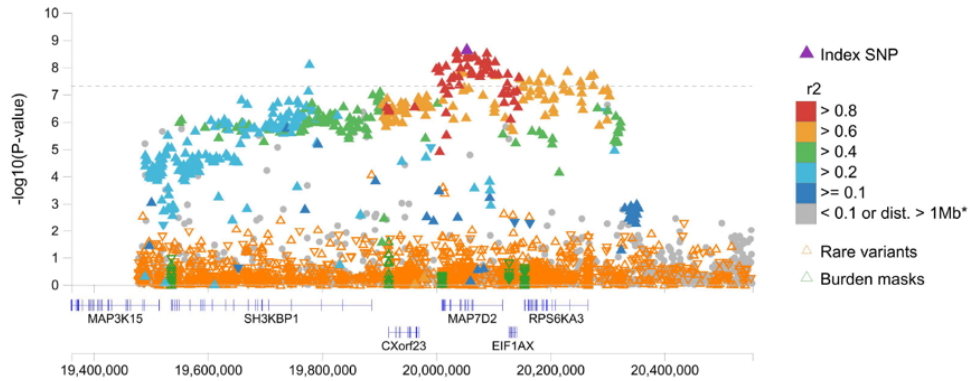
M



Association with 21:42388983:C:T

STUDY	N CASES		N CONTROLS		OR [95% CI]	PVALUE	AAF
	RR RA AA		RR RA AA				
UKB	94152 11343 339		188449 21605 586		1.058 [1.033,1.083]	3.1e-06	0.055
GHS	8330 1127 36		88399 10685 310		1.104 [1.033,1.179]	0.0034	0.057
MALMO	439 60 1		23966 3064 82		1.02 [0.782,1.332]	0.88	0.06
SINAI	289 24 1		9278 731 15		1.115 [0.72,1.728]	0.63	0.038
FinnGen	8491 1082 34		109834 12156 336		1.152 [1.07,1.239]	0.00016	0.044
META	111701 13636 411		419926 48241 1329		1.07 [1.048,1.093]	4.1e-10	0.055

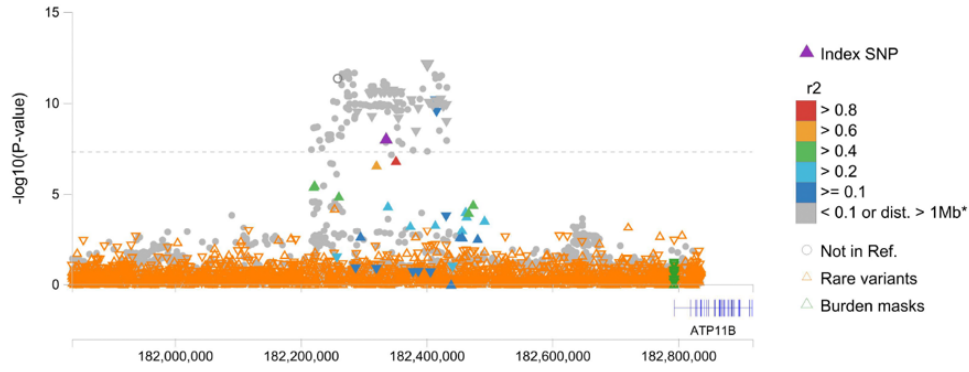
N



Association with 23:20054286:C:T

STUDY	N CASES		N CONTROLS		OR [95% CI]	PVALUE	AAF
	RR RA AA		RR RA AA				
UKB	76576 15170 13890		149076 40051 21281		1.034 [1.022,1.045]	5.3e-09	0.199
GHS	6746 1584 1163		69052 20344 9998		1.022 [0.989,1.057]	0.2	0.198
MALMO	340 101 59		18629 5557 2926		1.04 [0.911,1.187]	0.56	0.204
SINAI	211 70 33		6902 2062 1060		1.009 [0.836,1.217]	0.93	0.198
META	83873 16925 15145		243659 68014 35265		1.033 [1.022,1.044]	2.4e-09	0.201

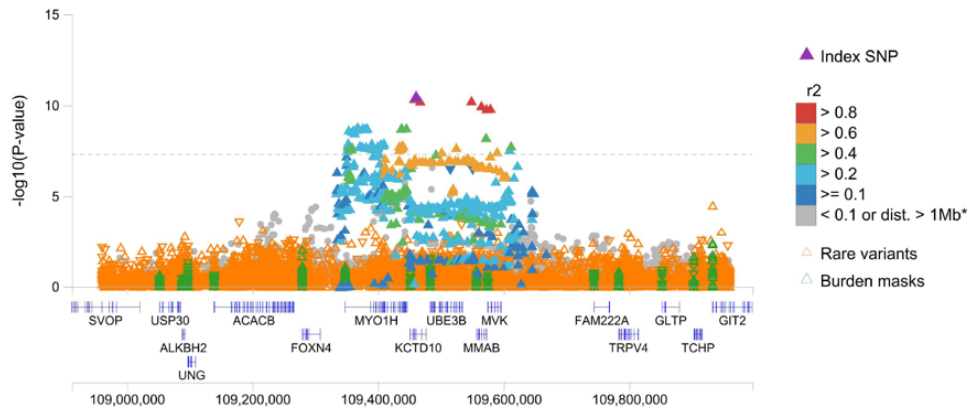
O



Association with 3:182336158:A:G

STUDY	N CASES		N CONTROLS		OR [95% CI]	PVALUE	AAF
	RR	RA AA	RR	RA AA			
UKB	73588	29411 2835	148654	56467 5519	1.045 [1.03,1.061]	5e-09	0.162
GHS	6811	2441 241	71154	25869 2371	0.98 [0.938,1.025]	0.38	0.154
MALMO	166	72 7	9985	3307 278	1.376 [1.073,1.765]	0.012	0.146
SINAI	250	59 5	8007	1888 129	1.078 [0.808,1.437]	0.61	0.115
FinnGen	6790	2573 243	87617	31820 2889	1.043 [0.997,1.092]	0.068	0.131
META	87605	34556 3331	325417	119351 11186	1.04 [1.026,1.054]	1.1e-08	0.157

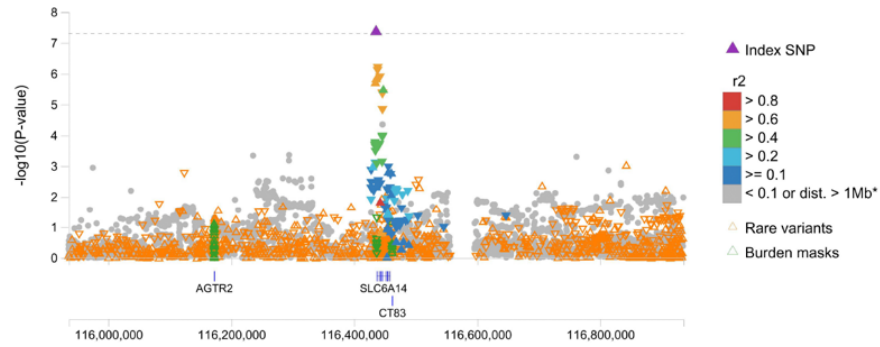
P



Association with 12:109460927:A:G

STUDY	N CASES		N CONTROLS		OR [95% CI]	PVALUE	AAF
	RR	RA AA	RR	RA AA			
UKB	32469	52272 21093	66442	103544 40654	1.034 [1.023,1.045]	1.9e-09	0.441
GHS	2653	4798 2042	28712	49392 21290	1.036 [1.003,1.069]	0.031	0.462
MALMO	162	244 94	8351	13404 5357	0.944 [0.831,1.072]	0.37	0.443
SINAI	74	162 78	2841	4861 2322	1.105 [0.938,1.302]	0.23	0.473
FinnGen	2891	4758 1957	37775	60404 24147	1.029 [0.998,1.061]	0.069	0.409
META	38249	62234 25264	144121	231605 93770	1.033 [1.023,1.044]	4.1e-11	0.447

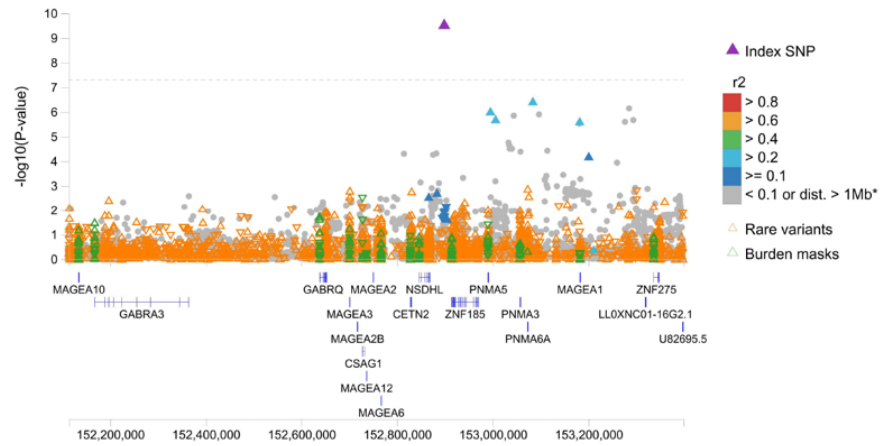
Q



Association with 23:116435671:G:A

STUDY	N CASES RR RA AA	N CONTROLS RR RA AA	OR [95% CI]	PVALUE	AAF
UKB	27000 21427 57209	47233 58896 104279	1.024 [1.015,1.034]	5.3e-07	0.638
GHS	2337 2252 4904	22577 28829 47988	1.033 [1.006,1.061]	0.018	0.629
MALMO	92 157 251	4628 9573 12911	1.014 [0.892,1.153]	0.83	0.644
SINAI	50 84 180	1280 2928 5816	0.939 [0.785,1.124]	0.49	0.702
META	29479 23920 62544	75718 100226 170994	1.025 [1.016,1.034]	4.4e-08	0.639

R



Association with 23:152898837:T:C

STUDY	N CASES RR RA AA	N CONTROLS RR RA AA	OR [95% CI]	PVALUE	AAF
UKB	100567 3127 1942	200300 7689 2419	1.086 [1.057,1.114]	8e-10	0.031
GHS	8982 347 164	94138 3988 1268	1.067 [0.991,1.149]	0.087	0.034
MALMO	477 16 7	25840 1005 267	1.035 [0.744,1.44]	0.84	0.029
SINAI	295 11 8	9360 462 202	0.885 [0.633,1.235]	0.47	0.046
META	110321 3501 2121	329638 13144 4156	1.082 [1.056,1.109]	3.1e-10	0.032