

Supplemental information

Single EV analysis (sEVA) of mutated proteins allows detection of stage 1 pancreatic cancer

Scott Ferguson¹, Katherine S. Yang¹, Piotr Zelga ², Andrew S. Liss ², Jonathan Carlson¹, Carlos Fernandez del Castillo^{1,2}, Ralph Weissleder^{1,3,*}

¹ Center for Systems Biology, Massachusetts General Hospital, 185 Cambridge St, CPZN 5206, Boston, MA 02114,

² Department of Surgery, Massachusetts General Hospital, 32 Fruit St, Boston, MA 02114,

³ Department of Systems Biology, Harvard Medical School, 200 Longwood Ave, Boston, MA 02115

*R. Weissleder, MD, PhD
Center for Systems Biology
Massachusetts General Hospital
185 Cambridge St, CPZN 5206
Boston, MA, 02114
617-726-8226
rweissleder@mgh.harvard.edu

Fig. S1: Labeling and purification steps in sEVA. Prior to concentrating and purifying EV, a number of steps were necessary to pre-purify samples. First, culture media was spun at 500g for 5 minutes to remove cells and large cellular debris and the supernatant was then spun at 2000g for 10 minutes for removal of apoptotic blebs and other micron-sized cellular material. The supernatant was then ultracentrifuged using the Beckman Coulter Optima-L-90K ultracentrifuge with the SW 32 Ti rotor, spinning at 24200 rpm for 70 minutes. **1)** EV obtained from plasma or cell culture media are purified and concentrated using a qEV singlesize exclusion column (IZON) since ultracentrifugation can co-pellet non-vesicle material. Following 1 ml void volume, 650µl was collected and used for subsequent labeling. **2)** The entirety of EV were labeled with the amine reactive AF488-PEG-TFP dye to define all EV. Unreacted AF488 was removed by Zeba columns. **3)** AF488-PEG-TFP labeled EV were co-labeled with fluorescent antibodies. Following labeling, unbound antibodies were removed with a second IZON column. **4)** Labeled EV were pipetted onto hydrophobic glass slides and cover slipped. **5)** EV were imaged and multicolor images were then analyzed as detailed in **Fig S2**.

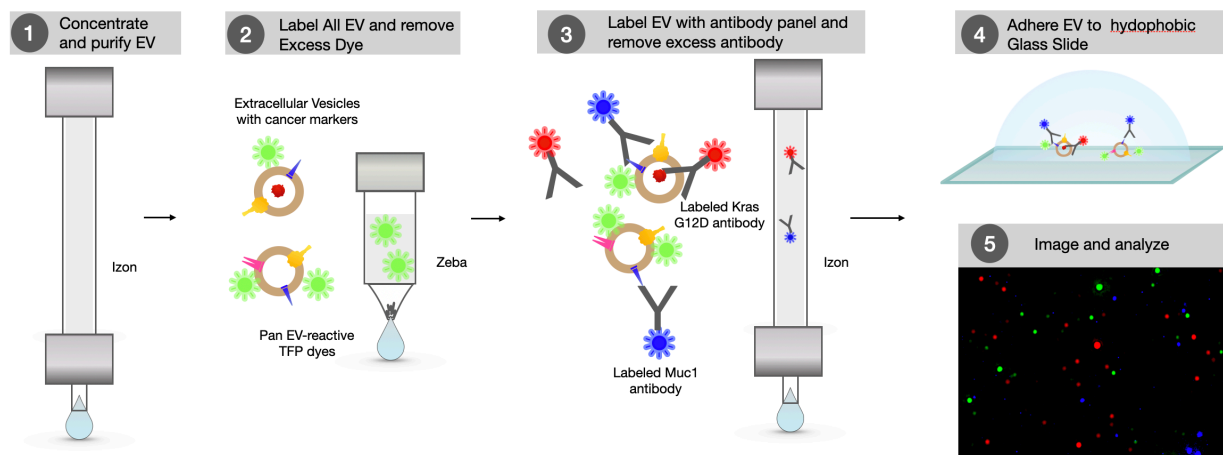


Fig. S2: Flowchart of image analysis. The pipeline shows the image acquisition and analysis parameters to obtain analyzable and reproducible data. Note that following confirmation of high-quality images, all data points were obtained by automated analysis and not by “visual inspection”. Marker signal intensity was measured only on regions demarcated by TFP-labeling to avoid non-specific signals not localized to EV. These measurements were analyzed in GraphPad Prism v8 to determine optimal threshold values between control samples and positive samples by maximizing the likelihood ratio of the receiver operator characteristic curve. Logic statements within Microsoft Excel were used to determine percent positive EVs for each sample, as well as co-positive EVs.

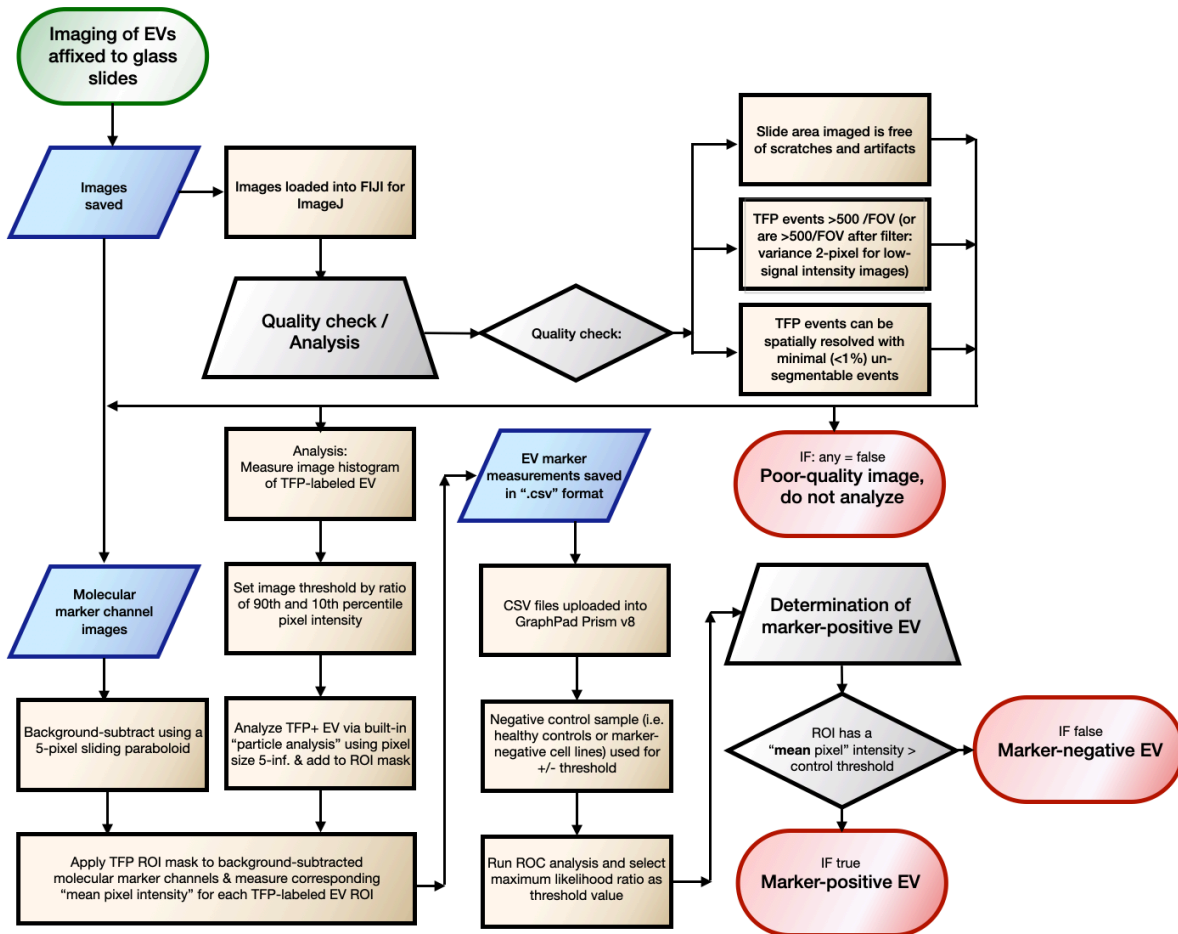
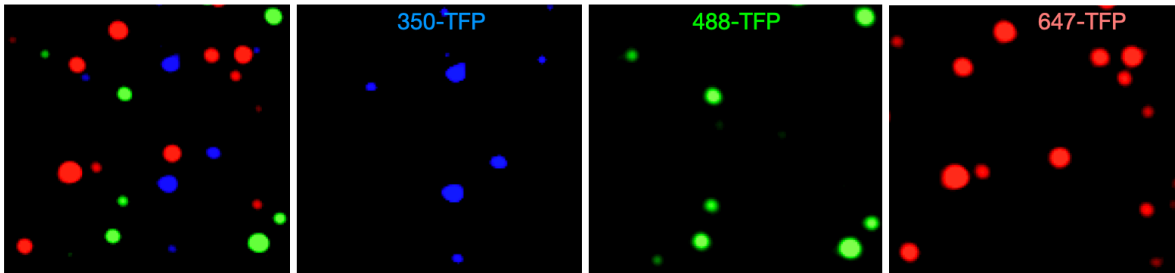


Fig. S3: Analysis of potential spectral crosstalk. A) Detection of EVs labeled with different TFP-fluorophores. EV derived from PANC1 cells were labeled with different fluorochrome (AF350, AF488, AF647) tagged TFP and then imaged by microscopy either as purified or mixed populations. **B) Cross-section analysis of mixed TFP population.** Note the high signal-to-noise ratio of individually labeled vesicles and specificity of each label as evidenced by the absence of signal overlap between the discretely labeled EV.

A



B

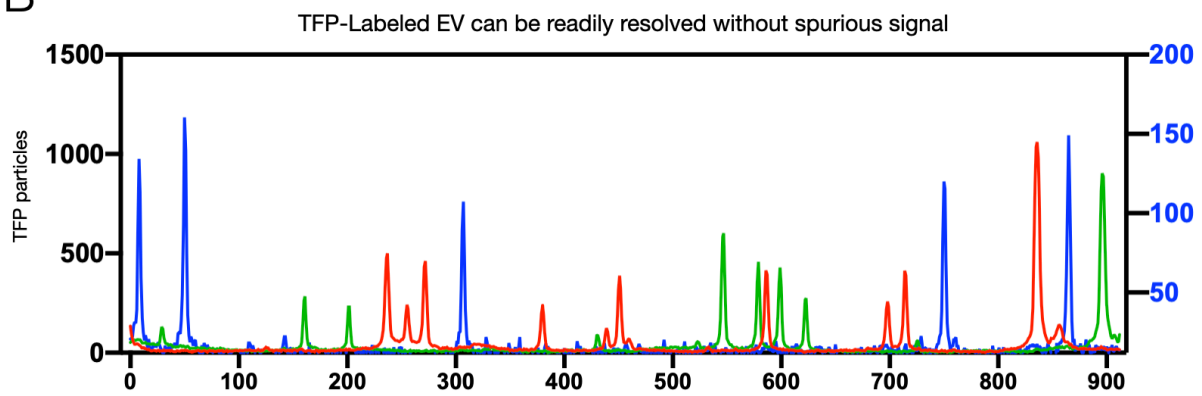


Fig. S4 Model Equations: Equations 1 - 5 describe tEV distribution and elimination in mass units where: $vasc_{kon}$ is the first order rate constant describing association of tEV to the vascular walls, $vasc_{koff}$ is the first order rate constant describing dissociation of tEV from the vascular walls back into circulation, $Renal_{EXC}$ and $Fecal_{EXC}$ are the first order rate constants of tEV eliminated into urine and feces, respectively, RES_{uptake} is the first order rate constant of hepatic uptake, and Hep_{Eli} is the first order rate constant of tEV eliminated in the liver ($days^{-1}$).

Equation 6 describes the tumor growth dynamics and production of tEV. k_{Tgr} is the first order growth rate of the tumor ($days^{-1}$) and $Tumor_{Max}$ is the maximum tumor volume (mm^3). Under the case where a tumor is present, tEV input from equation 6 is modeled in equation 1 by the first order tumor-EV shed rate: $k_{tEVSHED}$ ($days^{-1}$).

Eq. 1, Tumor EVs in circulation:

$$\frac{dtEV}{dt} = - (vasc_{kon} \times tEV) - (Renal_{EXC} \times tEV) - (Fecal_{EXC} \times tEV) - (RES_{uptake} \times tEV) + (vasc_{koff} \times VASC) + (TUMOR \times k_{tEVSHED})$$

Eq. 2, Tumor EVs bound to vasculature:

$$\frac{dVASC}{dt} = (vasc_{kon} \times tEV) - (vasc_{koff} \times VASC)$$

Eq. 3, Tumor EVs cleared by the liver:

$$\frac{dLIVER}{dt} = (tEV \times RES_{uptake}) - (LIVER \times Hep_{Eli})$$

Eq. 4, Tumor EVs cleared renally:

$$\frac{dURINE}{dt} = (tEV \times Renal_{EXC})$$

Eq. 5, Tumor EVs cleared fecally:

$$\frac{dFECES}{dt} = (tEV \times Fecal_{EXC})$$

Eq. 6. Tumor volume:

$$\frac{dTUMOR}{dt} = k_{Tgr} \times \log\left(\frac{Tumor_{Max}}{TUMOR}\right) \times TUMOR$$