

Effectiveness of rectal artesunate as pre-referral treatment for severe malaria in children <5 years of age

Manuel W. Hetzel^{1,2,*}, Jean Okitawutshu^{1,3}, Antoinette Tshetu³, Elizabeth Omoluabi⁴, Phyllis Awor⁵, Aita Signorell^{1,2}, Nina C. Brunner^{1,2}, Jean-Claude Kalenga³, Babatunde Akano⁴, Kazeem Ayodeji⁴, Charles Okon⁴, Ocheche Yusuf⁴, Proscovia Athieno⁵, Joseph Kimera⁵, Gloria Tumukunde⁵, Irene Angiro⁵, Giulia Delvento^{1,2}, Tristan Lee^{1,2}, Mark Lambiris^{1,2}, Marek Kwiatkowski^{1,2}, Nadja Cereghetti^{1,2}, Theodoor Visser⁶, Harriet G. Napier⁶, Justin M. Cohen⁶, Valentina Buj^{1,7}, Christian Burri^{1,2,#}, Christian Lengeler^{1,2,#}

¹) Swiss Tropical and Public Health Institute, Basel, Switzerland

²) University of Basel, Basel, Switzerland

³) Kinshasa School of Public Health, Kinshasa, Democratic Republic of the Congo

⁴) Akena Associates, Abuja, Nigeria

⁵) Makerere University School of Public Health, Kampala, Uganda

⁶) Clinton Health Access Initiative, Boston, MA, USA

⁷) UNICEF, New York, NY, USA

*Corresponding author: manuel.hetzel@swisstph.ch

#Equal contribution

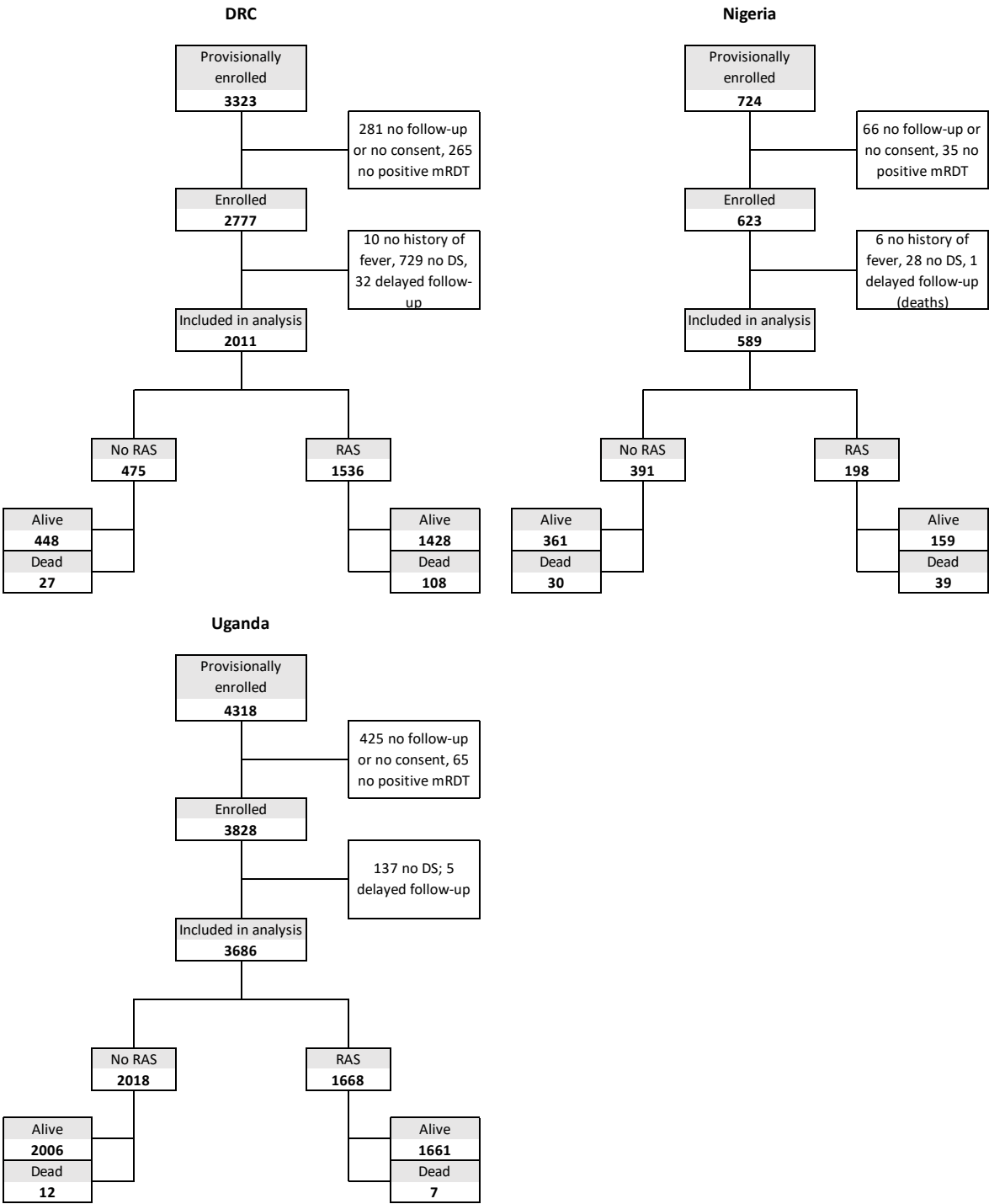
Supplementary material

Supplementary Table S1: Study setting

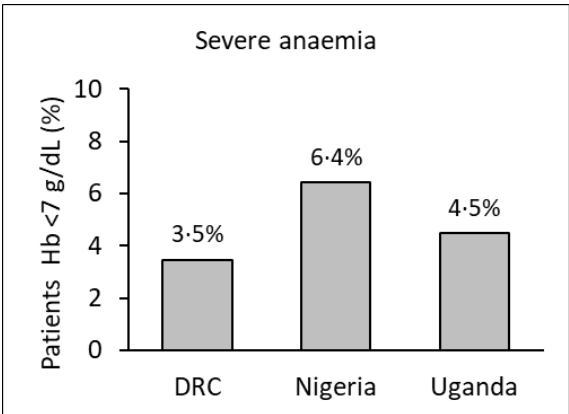
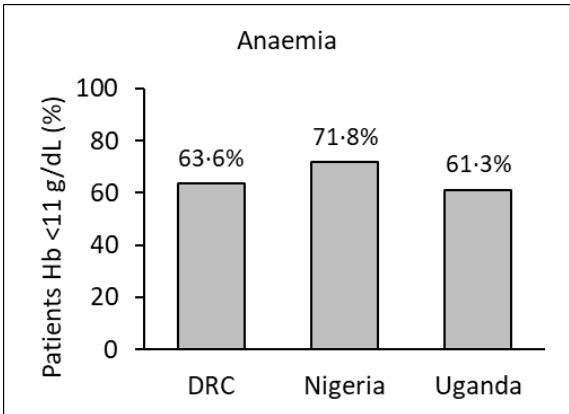
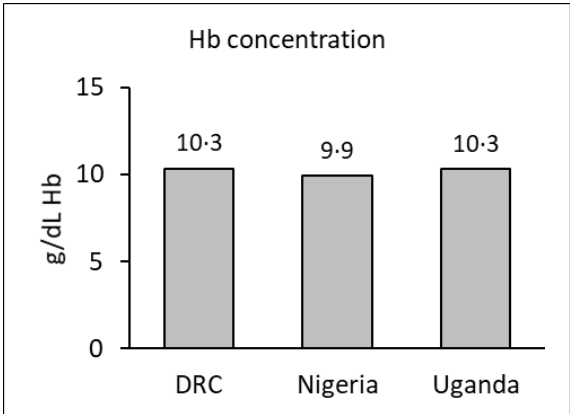
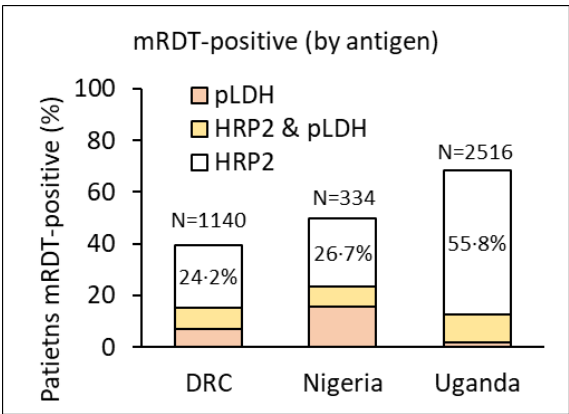
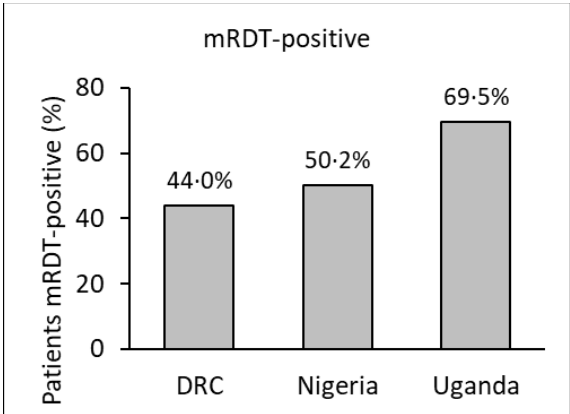
| | DRC | Nigeria | Uganda |
|---|---|--|---|
| Population (children <5 years) | | | |
| | Health Zone | Local Government Area | District |
| | Ipamu: 284'484 (52'523) | Fufore: 280'660 (49'982) | Kole: 298'394 (59'184) |
| | Kenge: 382'232 (70'567) | Mayo-Belwa: 204'746 (33'101) | Kwania: 232'402 (48'582) |
| | Kingandu: 119'251 (22'016) | Song: 261'543 (47'347) | Oyam: 465'190 (92'752) |
| | Total: 785'968 (145'107) | Total: 746'949 (130'430) | Total: 995'986 (200'518) |
| Source | https://www.worldpop.org | | |
| Public health care providers* | | | |
| Community Health Workers | Site de Soins Communautaire (Community Care Site) (N = 42) | Community-Oriented Resource Person (CORP) (N = 500) | Village Health Team (VHT) members (N = 5,100) |
| Primary Health Care | Poste de Santé (Health Post) Centre de Santé (Health Centre) (N = 152) | Health Post** Primary Health Centre (PHC) (N = 77) | Health Centre II (HC II) (N = 30) |
| Referral Facilities | Centre de Santé de Référence (Referral Health Centre) and Hôpital Général de Référence (General Referral Hospital) (N = 19) | Cottage Hospital (N = 3) | Health Centre III (HC III), Health Centre IV (HC IV) and Hospital (N = 20) |
| General danger signs as per national iCCM guidelines | | | |
| | <ul style="list-style-type: none"> - Unusually sleepy or unconscious - Not able to drink or feed anything - Vomiting everything - Convulsions | <ul style="list-style-type: none"> - Unusually sleepy or unconscious - Not able to drink or feed anything - Vomiting everything - Convulsions - Not responding to ACT - Yellowness of the eyes | <ul style="list-style-type: none"> - Very sleepy or unconscious - Not able to breastfeed or drink - Vomits everything - Convulsions |

*Number of providers at the beginning of the study period. **Health posts were upgraded to Primary Health Centres during the study period.

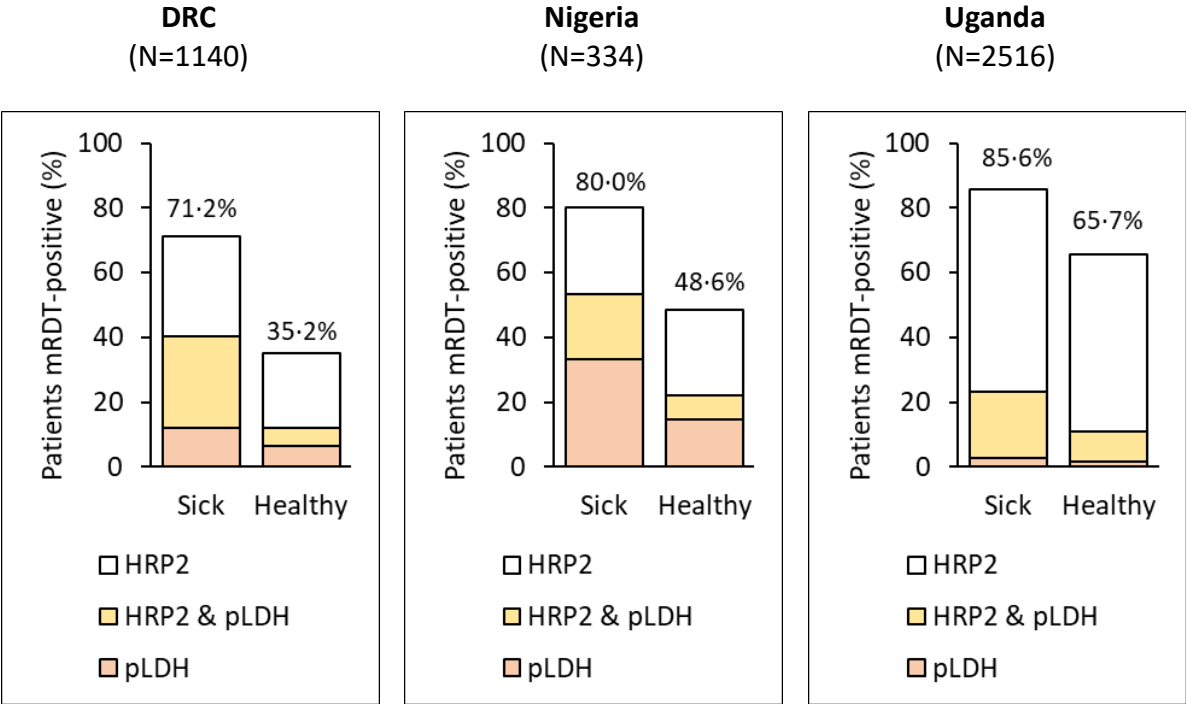
Supplementary Figure S1: Inclusion flow-charts



Supplementary Figure S2: **Complementary day 28 health outcome indicators, by country**



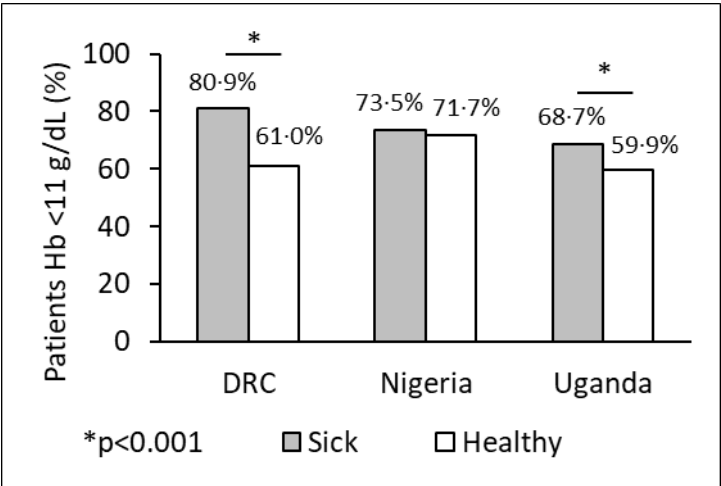
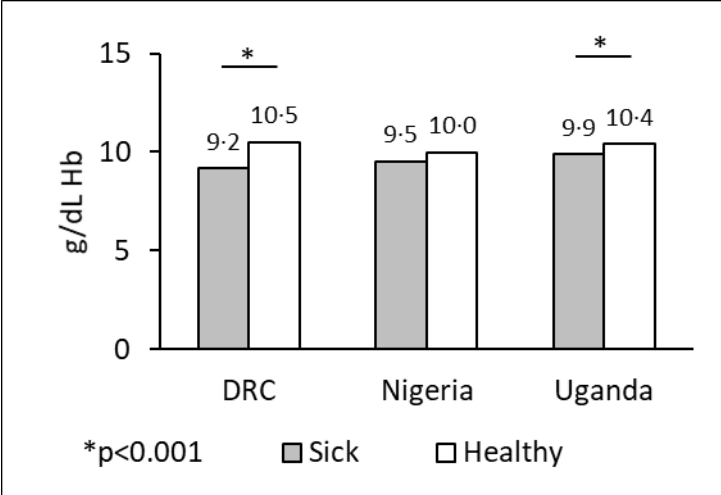
Supplementary Figure S3: Results of HRP2/pLDH Combo tests at day 28 follow-up, by detected antigen (HRP2 and/or pLDH), in a sub-sample of study patients



Proportion HRP2 only out of all with positive mRDT

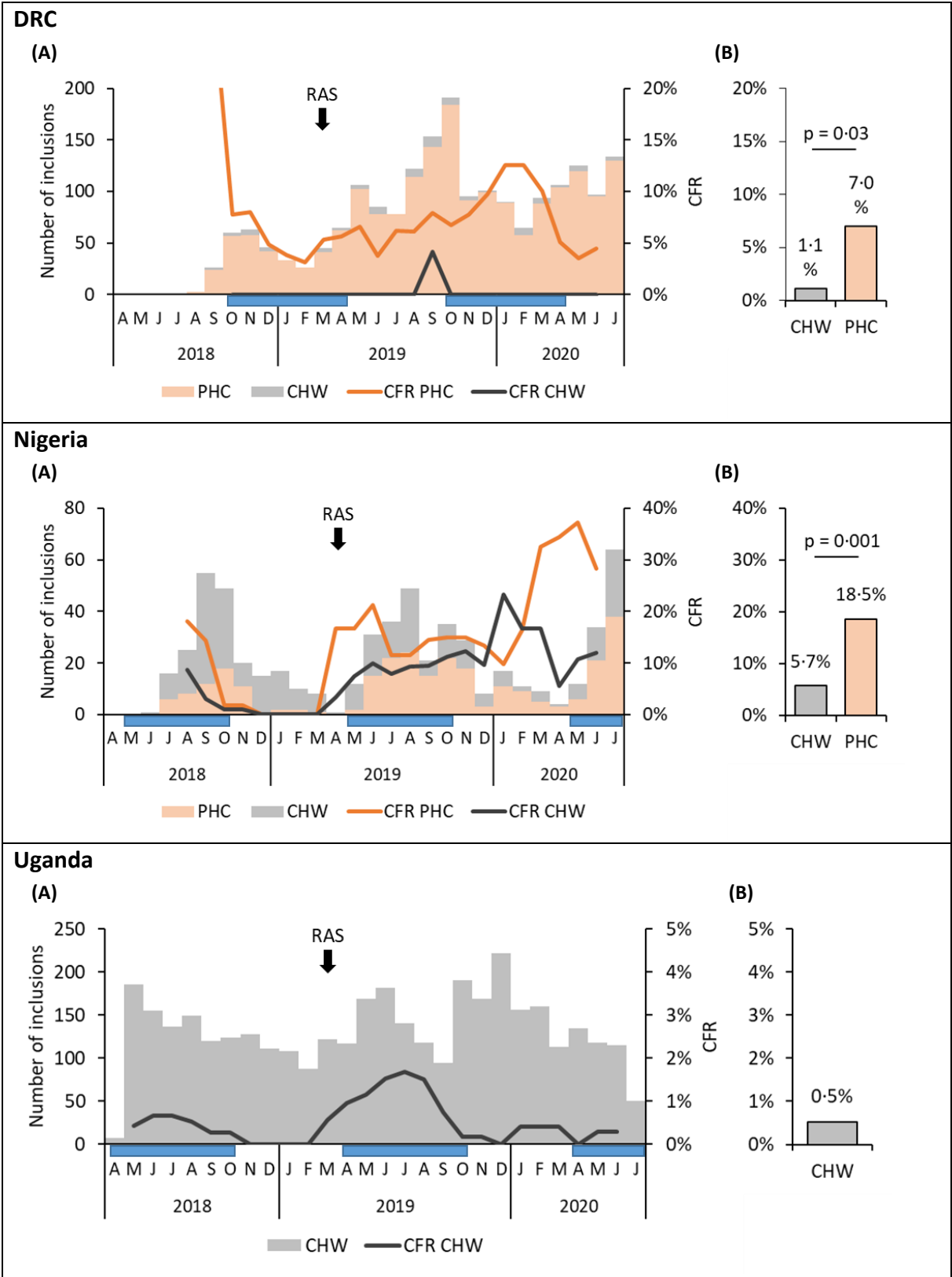
DRC: healthy 66.2% vs. sick 43.4%, p < 0.001
 Nigeria: healthy 54.8% vs. sick 33.3%, p = 0.15
 Uganda: healthy 83.4% vs. sick 73.0%, p < 0.001

Supplementary Figure S4: Mean haemoglobin (Hb) concentration and percent of children with anaemia (Hb <11 g/dL) among children sick or healthy at follow-up



Reference for definitions of anaemia and severe anaemia: WHO. Haemoglobin concentrations for the diagnosis of anaemia and assessment of severity. Vitamin and Mineral Nutrition Information System. Geneva, World Health Organization, 2011 (WHO/NMH/NHD/MNM/11.1).

Supplementary Figure S5: (A) Time trend in monthly inclusions and case fatality ratio (CFR) expressed as 3-month moving average, by type of enrolling provider, and (B) overall CFR by enrolling provider



CHW = community health worker, PHC = primary health centre. Horizontal blue bars denote the rainy season.