

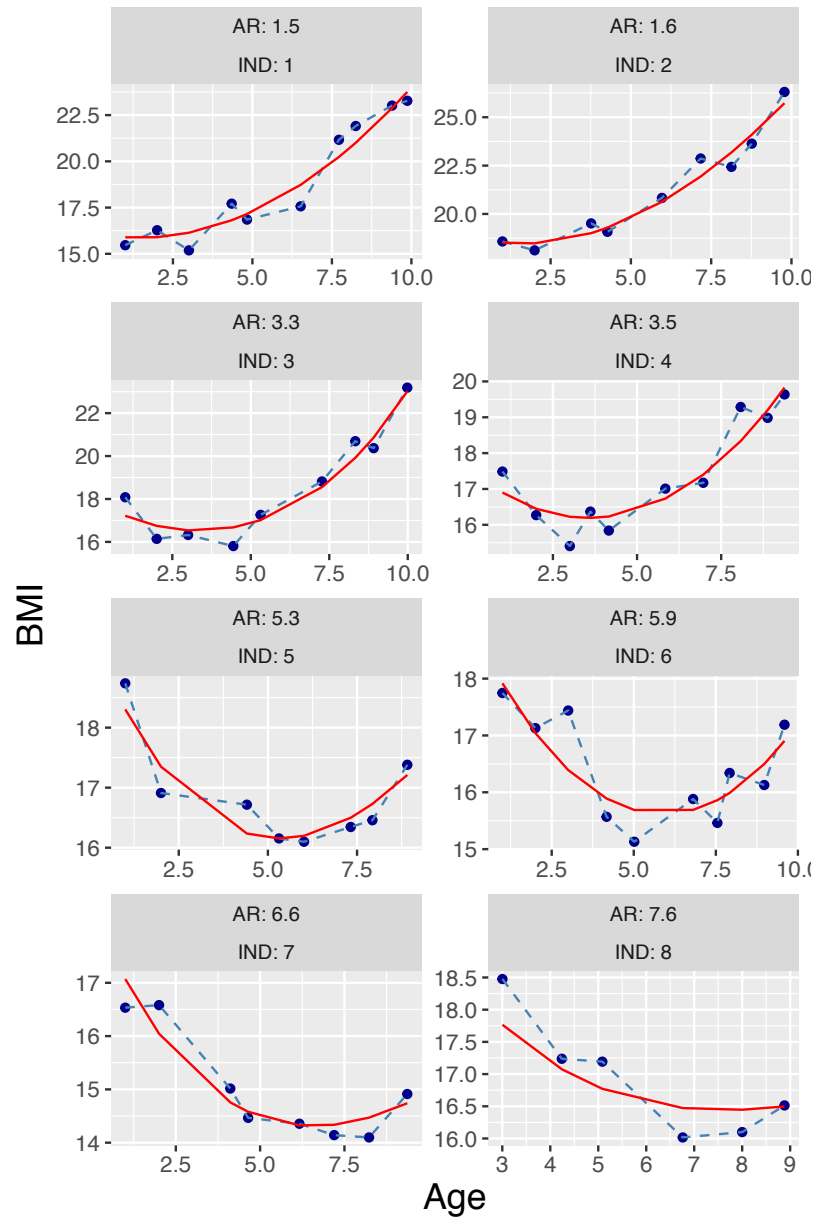
**S1 Fig.**

**Global ancestry proportions of Chilean children.** AFR: African; AYM: Aymara; CHL: Chilean; EUR: European; MPU: Mapuche.

474

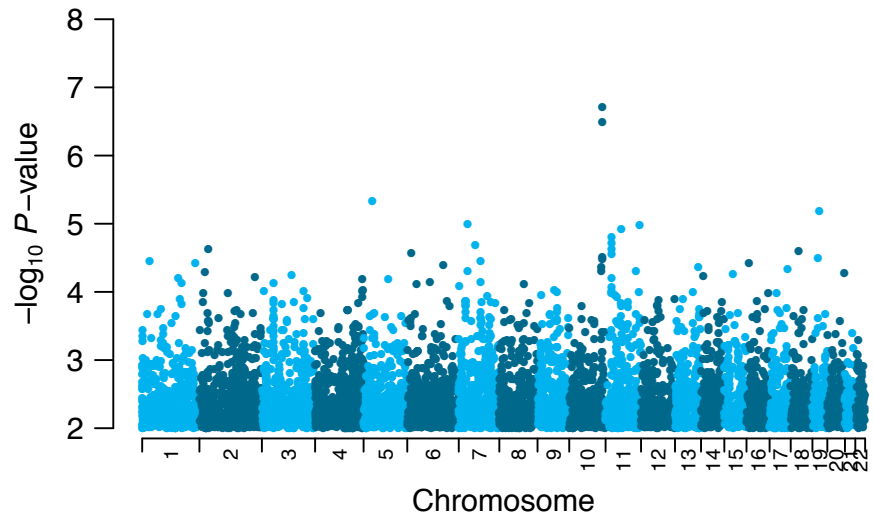
475

476

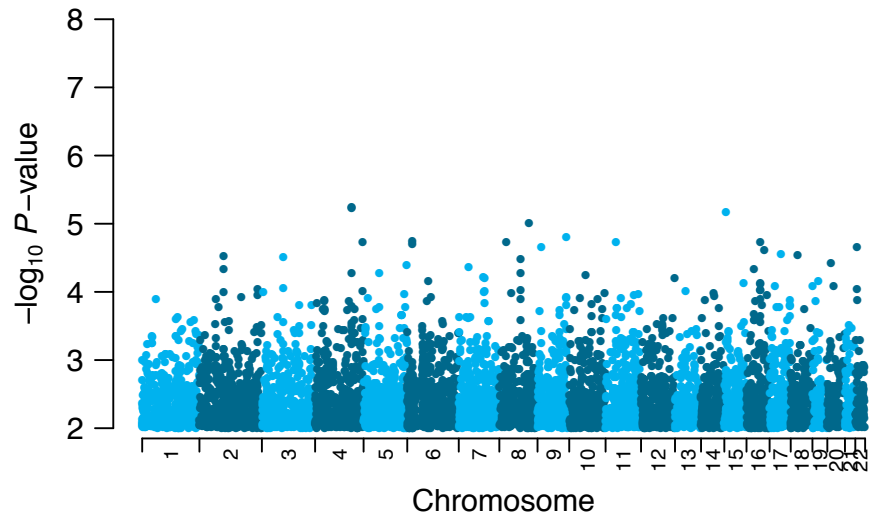


**S2 Fig.**  
**Individual estimations of Age-AR and BMI-AR.** Shown are examples of BMI trajectories for individuals with Age-AR estimations between 1.5 and 7.6 years old. Individual (IND) codes do not represent the original codes due to ethical reasons. Age-AR: Age at adiposity rebound.

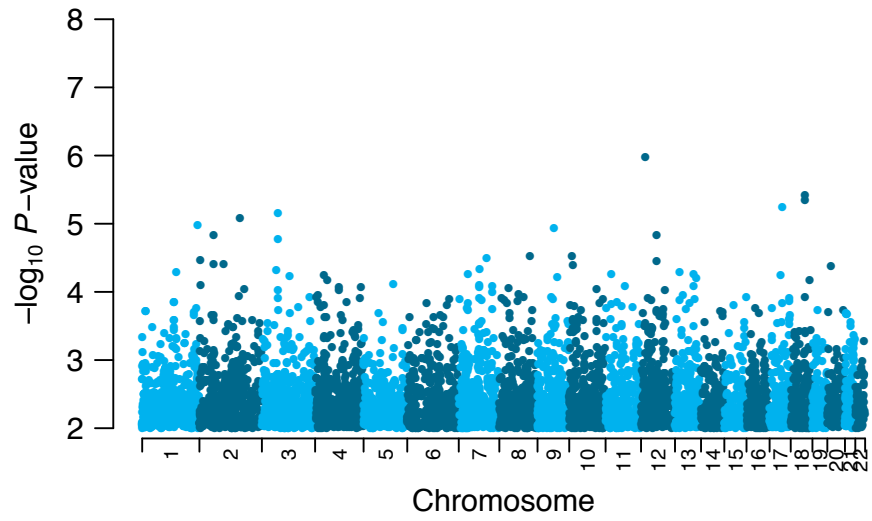
477  
 478  
 479  
 480  
 481



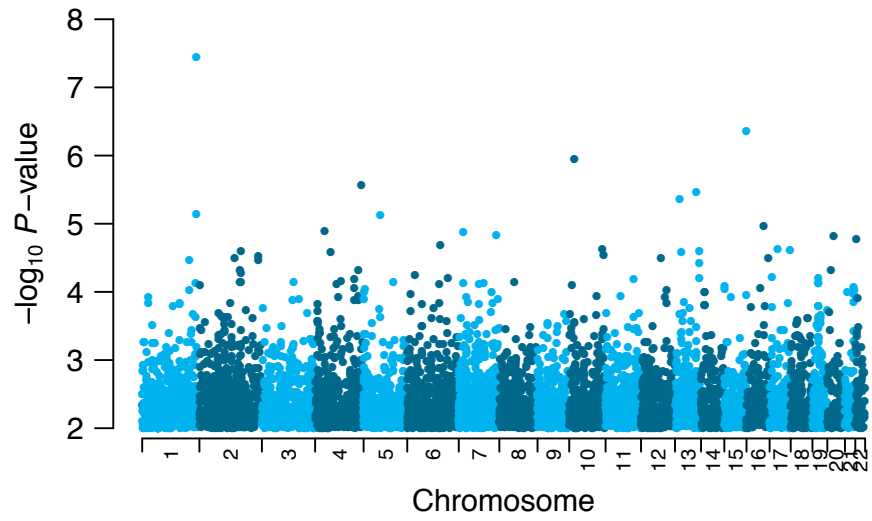
GWAS of BMI in children aged 0.5-1.5 years old.



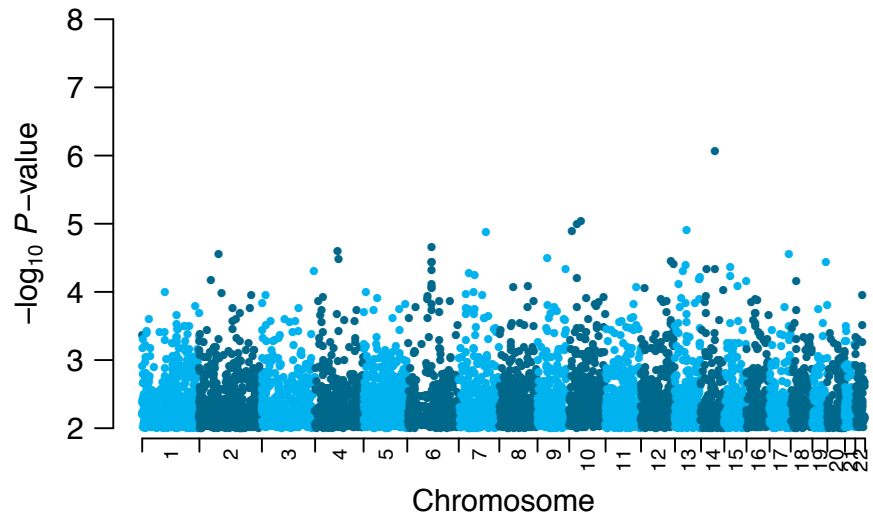
GWAS of BMI in children aged 2.5-3.5 years old.



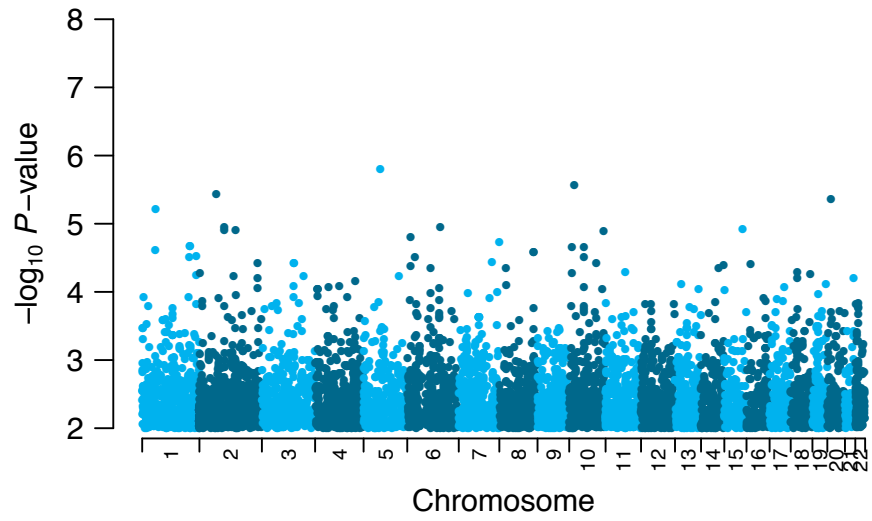
GWAS of BMI in children aged 3.5-4.5 years old.



GWAS of BMI in children aged 4.5-5.5 years old.

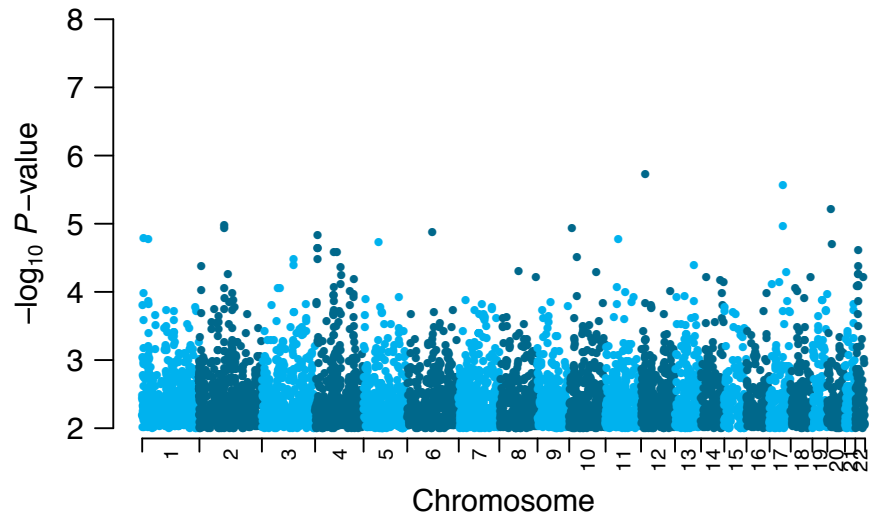


GWAS of BMI in children aged 5.5-6.5 years old.

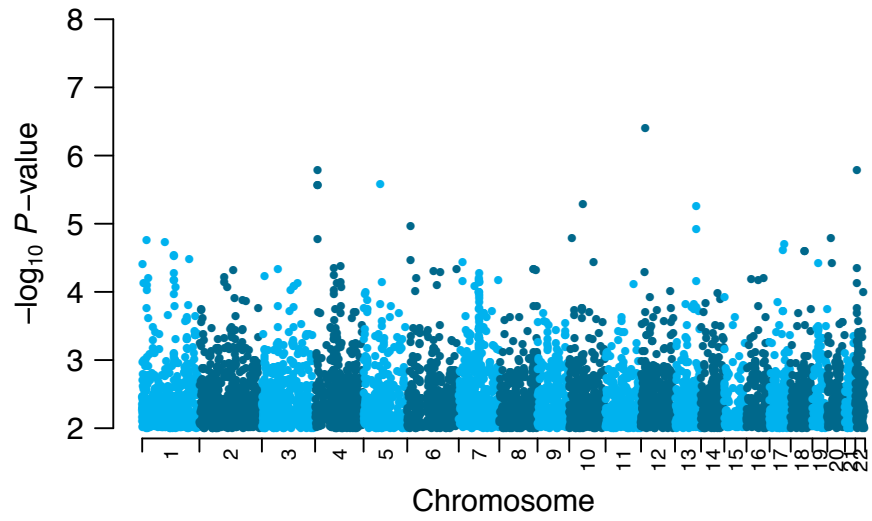


GWAS of BMI in children aged 6.5-7.5 years old.

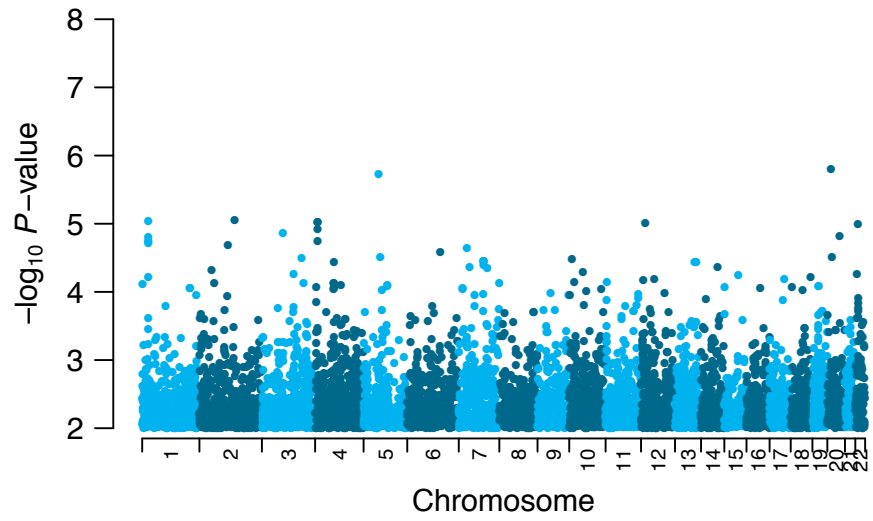




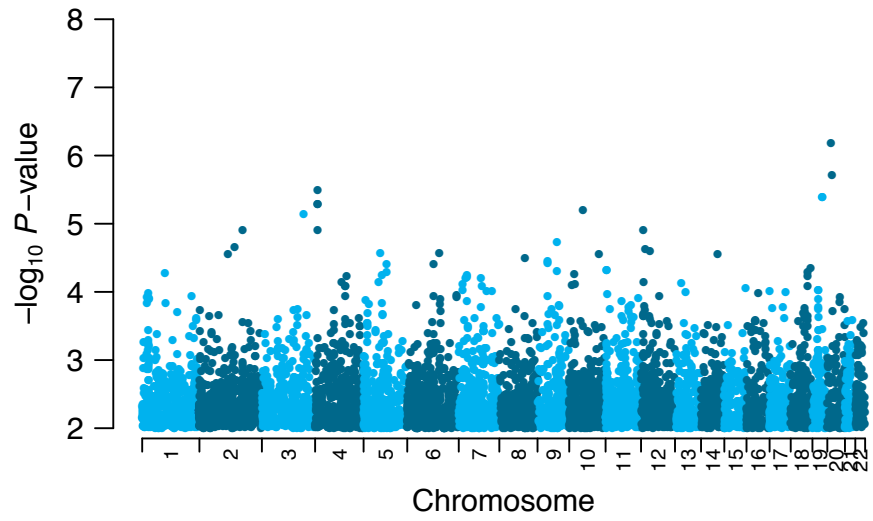
GWAS of BMI in children aged 7.5-8.5 years old.



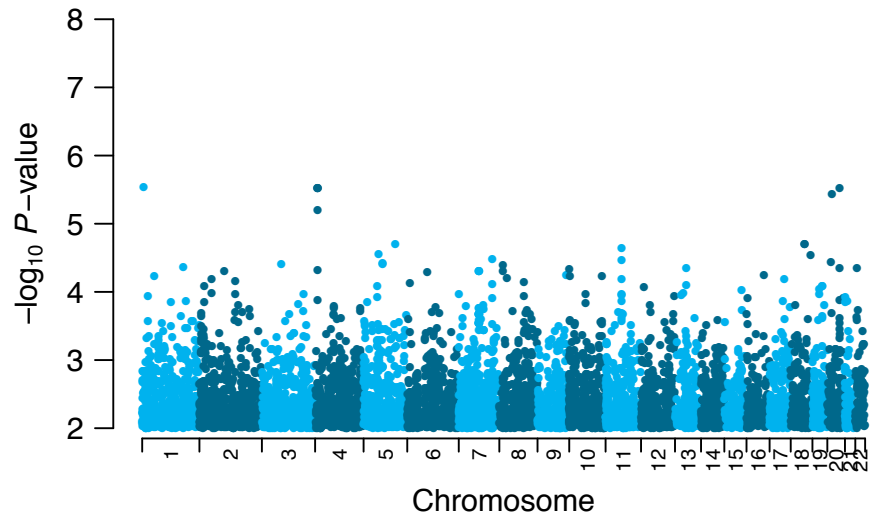
GWAS of BMI in children aged 8.5-9.5 years old.



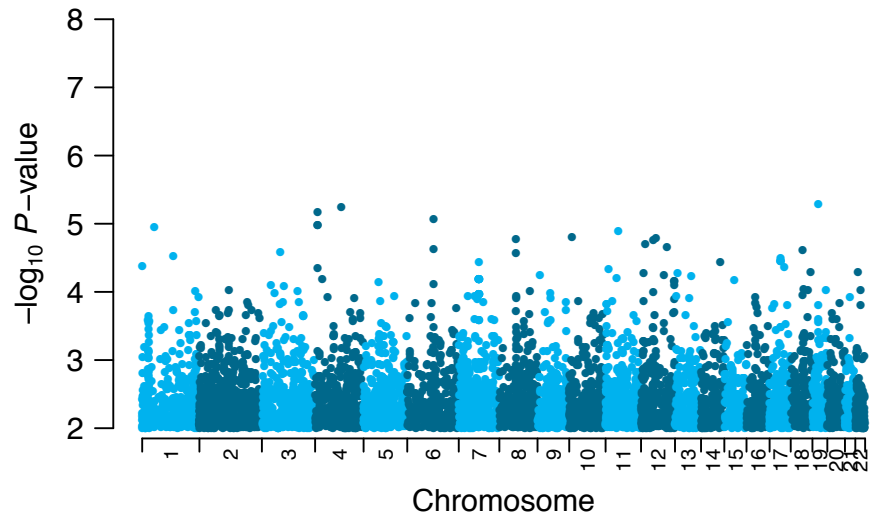
GWAS of BMI in children aged 9.5-10.5 years old.



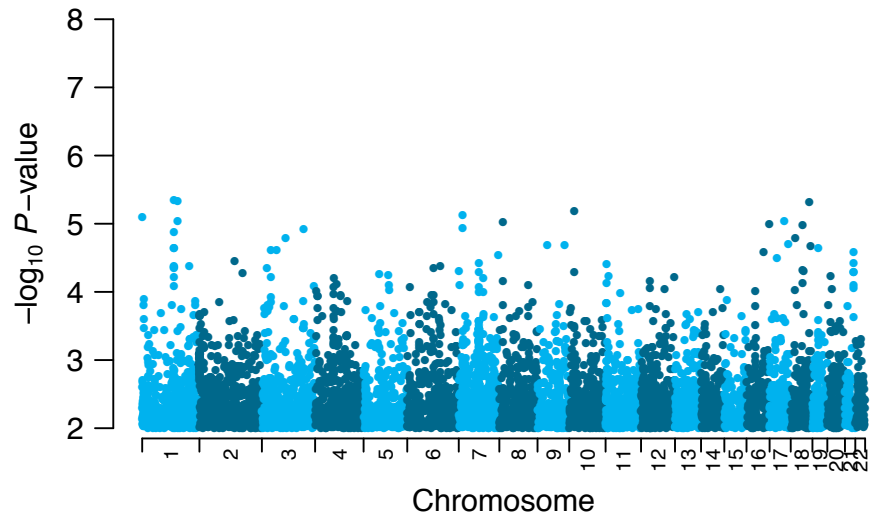
GWAS of BMI in children aged 10.5-11.5 years old.



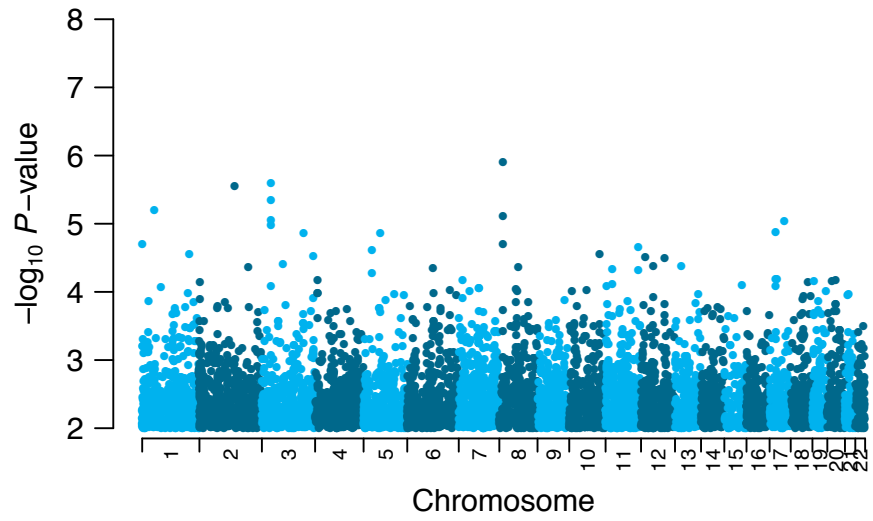
GWAS of BMI in children aged 11.5-12.5 years old.



GWAS of BMI in children aged 12.5-13.5 years old.

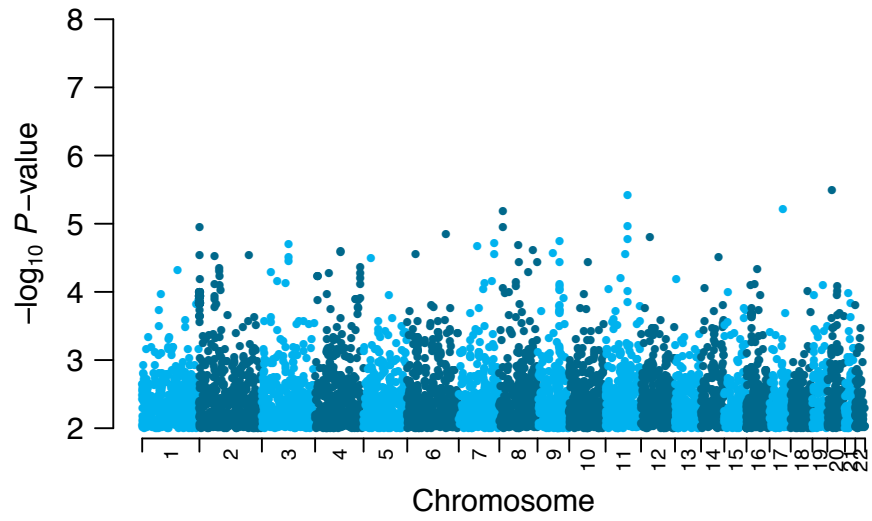


GWAS of BMI in children aged 13.5-14.5 years old.

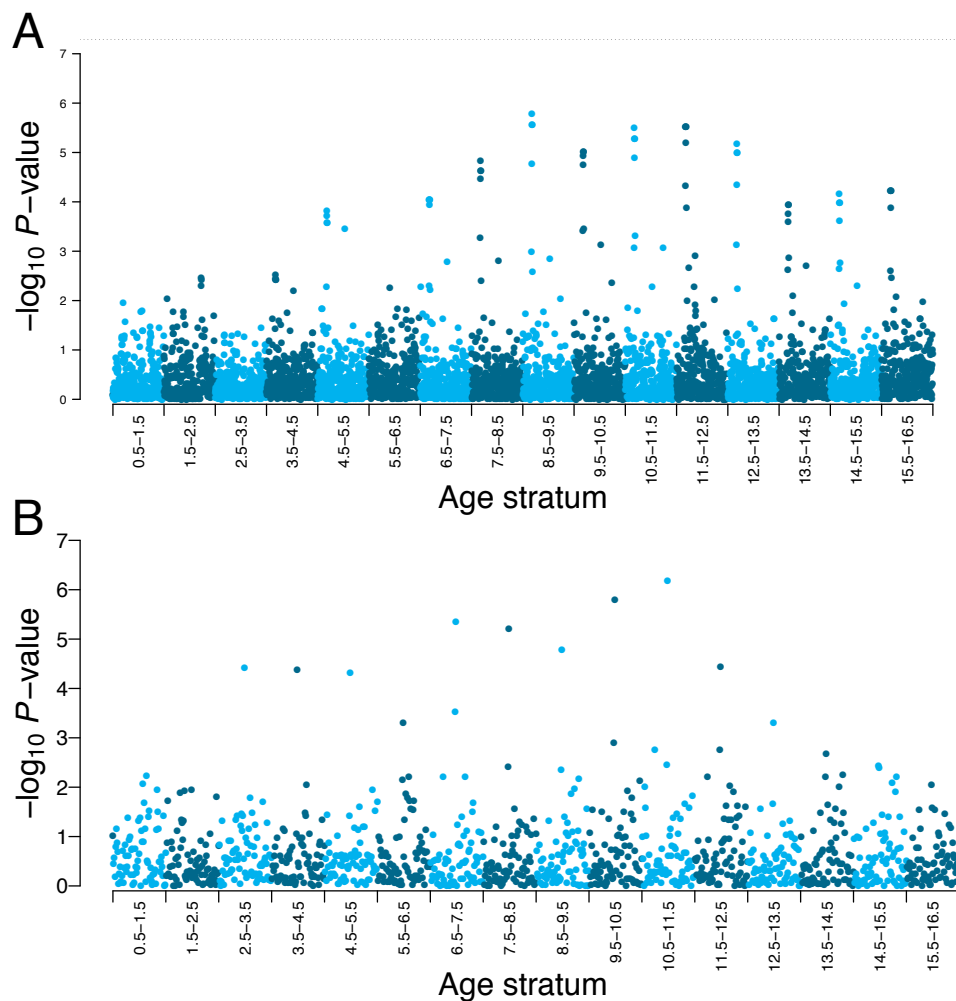


GWAS of BMI in children aged 14.5-15.5 years old.





GWAS of BMI in children aged 15.5-16.5 years old.

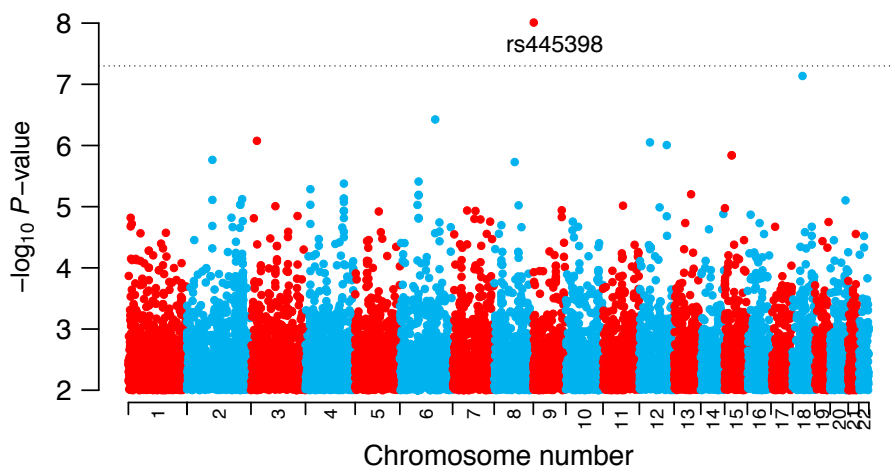


**Trajectories of association peaks from chromosomes 4 and 20 along age strata.** A: Chromosome 4. The strongest association corresponds to the *rs12501266* variant of gene *SORCS2*. Shown is the region with physical coordinates 4:7440183-7310183. B: Chromosome 20. The strongest association corresponds to the *rs474169* variants of gene *SNAP25-AS1*. The region shown has physical coordinates 20:10016800-10181800.

**S19 Fig. Longitudinal GWAS of BMI.** Manhattan plot showing genome-wide association  $P$ -values represented as  $-\log_{10} P\text{-value}$ .

S20 Fig.

537

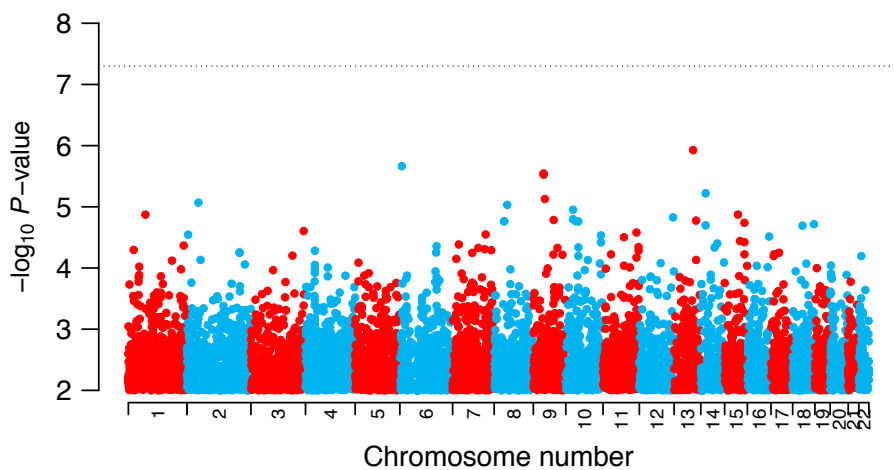


**GWAS of Age-AR.** Manhattan plot showing genome-wide association  $P$ -values represented as  $-\log_{10} P$ -value. Variants achieving the genome wide threshold of  $P < 5 \times 10^{-8}$  are labeled.

538  
539  
540  
541

S21 Fig.

542



**GWAS of BMI-AR.** Manhattan plot showing genome-wide association  $P$ -values represented as  $-\log_{10} P$ -value.

543  
544  
545

S1 Table.

546

Age stratum	Sample size	BMI Mapuche	BMI European	P-value	Lambda
0.5-1.5	718	17.96	17.64	0.5888	-1.0
1.5-2.5	684	17.32	16.68	0.2778	-1.3
2.5-3.5	504	17.25	16.17	0.1405	-1.6
3.5-4.5	642	17.28	16.23	0.1366	-2.0
4.5-5.5	788	17.33	16.08	0.0628	-2.0
5.5-6.5	483	18.44	15.69	0.0058	-1.8
6.5-7.5	803	18.72	16.20	0.0063	-1.7
7.5-8.5	829	19.76	16.61	0.0019	-1.4
8.5-9.5	828	20.52	17.44	0.0119	-1.0
9.5-10.5	841	21.67	17.98	0.0037	-0.6
10.5-11.5	795	22.88	18.47	0.0013	-0.5
11.5-12.5	667	24.19	18.57	0.0004	-0.7
12.5-13.5	748	24.64	19.86	0.0030	-0.7
13.5-14.5	782	26.16	19.86	0.0002	-1.1
14.5-15.5	780	26.46	20.61	0.0006	-1.1
15.5-16.5	587	26.88	21.00	0.0022	-1.1

**BMI**

547

**estimation by age stratum in Mapuche and European individuals.** Shown are the age stratum; number of individuals; estimated BMI among Mapuche; estimated BMI among Europeans; association  $P$ -values between BMI and Mapuche global ancestry;  $\lambda$  used in Box-Cox transformations for each age stratum.

548

549

550

551

S2 Table.

552

SNP ID-Allele	Location	Consequence	Gene	$\beta$ -GT	$P$ -GT
<i>rs35266519-T</i>	17:38062390	missense	<i>GSDMB</i>	0.26	2.9E-07
<i>rs74008771-G</i>	15:37046787	intron	<i>C15orf41</i>	0.31	3.2E-07
<i>rs4655426-T</i>	1:215893063	intron	<i>USH2A</i>	-0.04	9.8E-07
<i>rs78375444-G</i>	13:35905127	intron	<i>NBEA</i>	0.20	1.1E-06
<i>rs78982354-G</i>	14:39702615	upstream	<i>MIA2</i>	0.28	2.1E-06
<i>rs79316274-C</i>	13:57529593	intergenic	-	0.12	2.4E-06
<i>rs75032037-T</i>	13:57426033	intergenic	-	0.11	2.8E-06
<i>rs11545026-T</i>	15:57842525	3' UTR	<i>CGNL1</i>	0.11	3.6E-06
<i>rs1058511-A</i>	19:55859439	3' UTR	<i>SUV420H2</i>	-0.03	5.4E-06
<i>rs6914843-G</i>	6:30894837	downstream	<i>VAR2</i>	0.40	5.4E-06

553

554

555

556

557

**Strongest associations in the GWAS for longitudinal BMI.** Shown is the SNP rs ID with the associated allele, physical position in the chromosome, consequence type, gene, effect size of the genotype ( $\beta_{GT}$ ) with the corresponding association  $P$ -value ( $P_{GT}$ ), and the frequency of the associated allele.

S3 Table.

558

SNP ID-Allele	Location	Consequence	Gene	$\beta$ -GTxSex	P-GTxSex	Frequency
<i>rs2183606-G</i>	13:92804506	intron	<i>GPC5</i>	-4.90	1.2E-06	0.453
<i>rs6926791-A</i>	6:5169584	intron	<i>LYRM4</i>	4.78	2.2E-06	0.040
<i>rs10812580-A</i>	9:27383756	intron	<i>MOB3B</i>	4.72	2.9E-06	0.259
<i>rs13283804-G</i>	9:27391922	intron	<i>MOB3B</i>	4.71	3.0E-06	0.284
<i>rs76077232-C</i>	14:34930273	intron	<i>SPTSSA</i>	4.56	6.0E-06	0.013
<i>rs141739085-C</i>	9:32332364	downstream	<i>SLC25A5P8</i>	4.52	7.4E-06	0.137
<i>rs1464005-A</i>	2:34238100	intron/NCT	<i>AC009499.1</i>	-4.49	8.5E-06	0.346
<i>rs73230790-A</i>	8:31052352	intergenic	-	-4.47	9.3E-06	0.220

**Strongest associations for BMI-AR GWAS.** Shown is the SNP rs ID with the associated allele, physical position in the chromosome, consequence type, gene, effect size of the interaction between genotype and sex ( $\beta_{GTxSex}$ ) with the corresponding association  $P$ -value ( $P_{GTxSex}$ ), and the frequency of the associated allele.

559

560

561

562

563