

Single-Dose SARS-CoV-2 Vaccination With BNT162b2 and AZD1222 Induce Disparate Th1 Responses and IgA Production

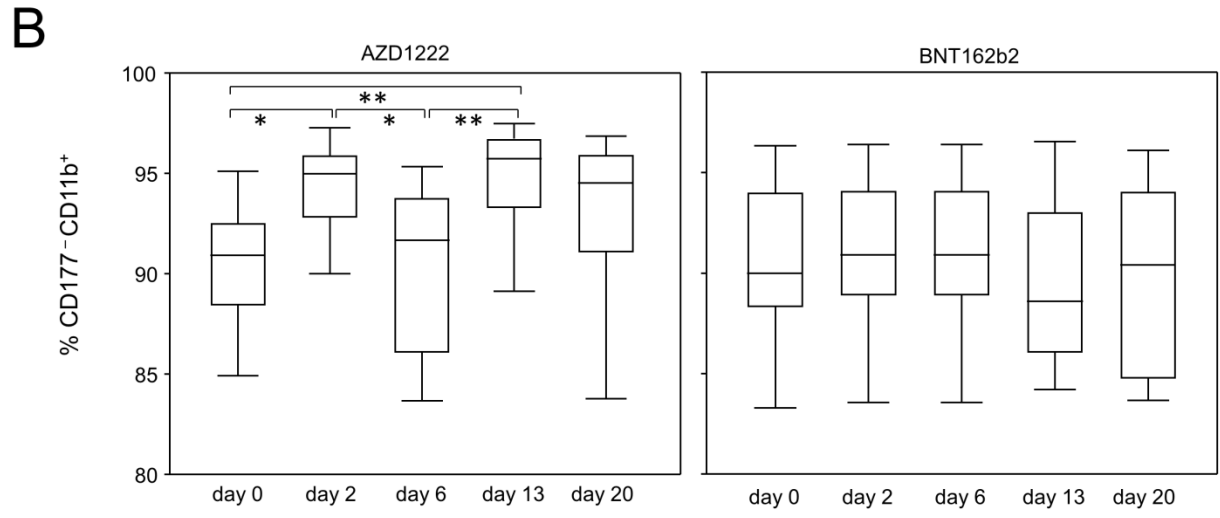
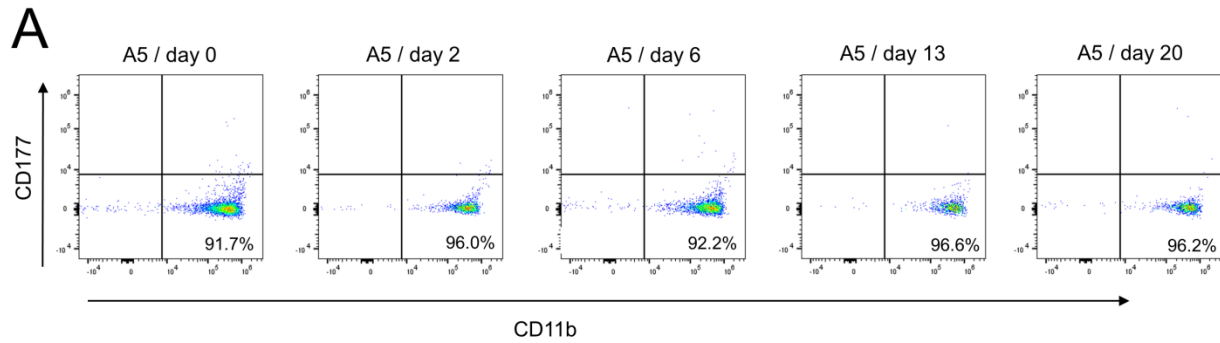
Supplementary Information

Michael Müller, Johann Volzke, Behnam Subin, Silke Müller, Martina Sombetzki, Emil C.
Reisinger, Brigitte Müller-Hilke

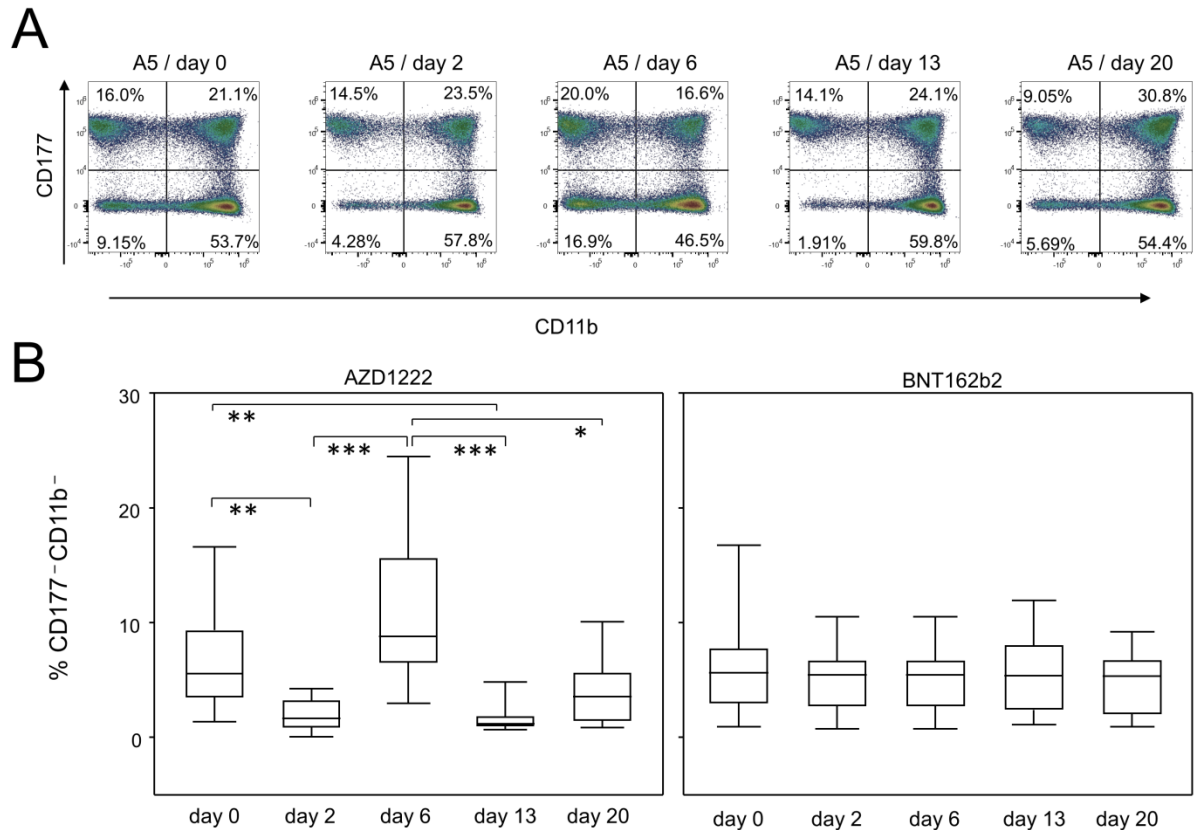
Contents

Supplementary Figures 1-7

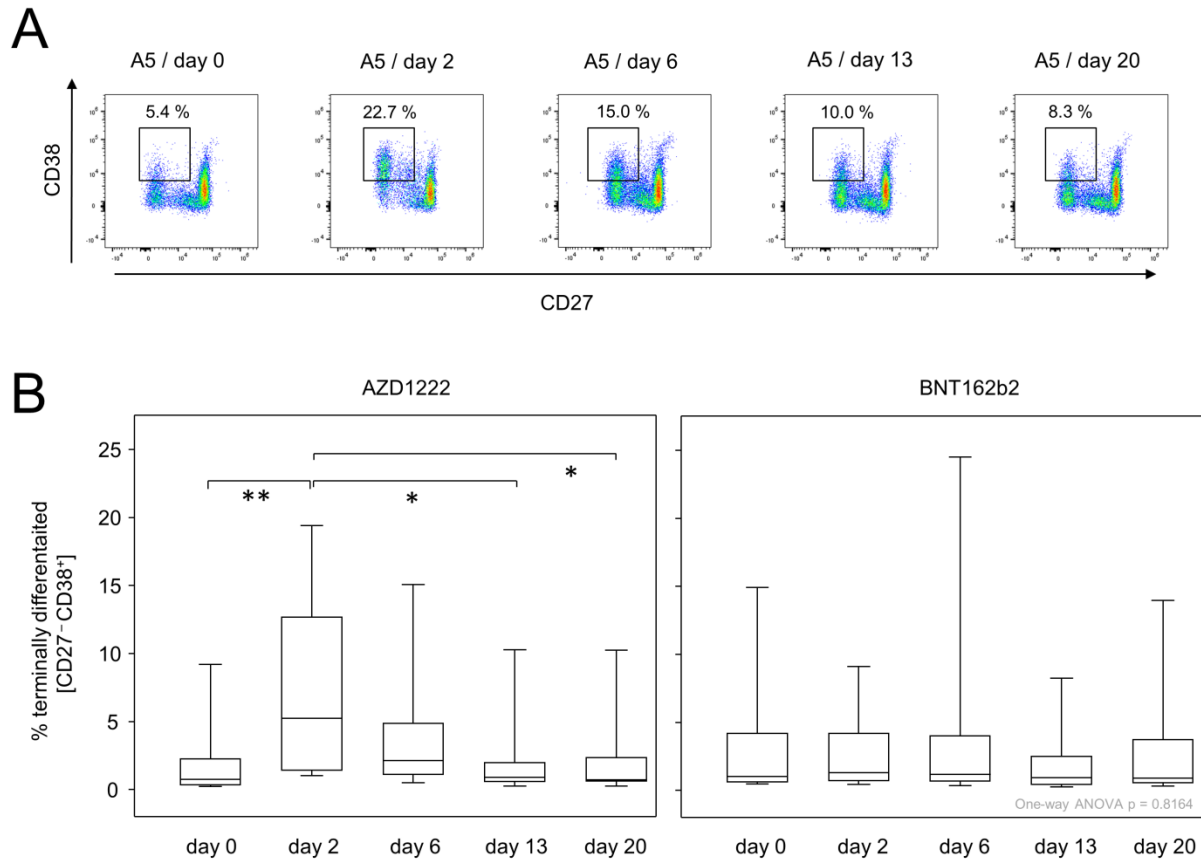
Supplementary Tables 1-3



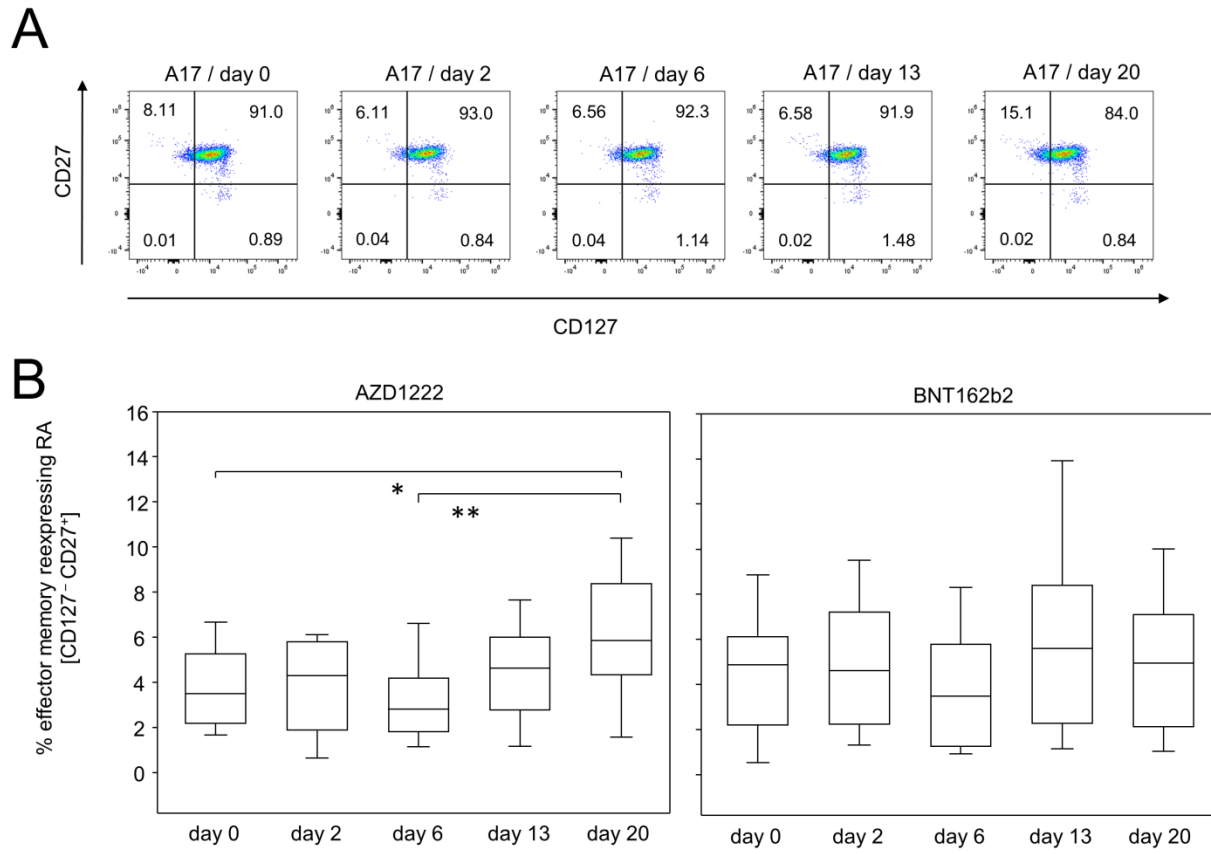
Supplementary Fig. 1 Vaccination with AZD1222, unlike BNT162b2, led to an intermittent increase in CD14⁺CD16⁻CD11b⁺CD177⁻ granulocytes. A Pseudocolor plots for the expression of CD11b and CD177 on SSC^{hi}CD14⁺CD16⁻ granulocytes are representative for the AZD1222 vaccination group. **B** Proportions of CD177⁻CD11b⁺ granulocytes after vaccination with AZD1222 (n = 18, left panel) or BNT162b2 (n = 18, right panel). p-values resulting from Kruskal-Wallis and Dunn's multiple comparisons tests were 0.0004 for AZD1222 and 0.6760 for BNT162b2 analyses, respectively. *p < 0.05, **p < 0.01



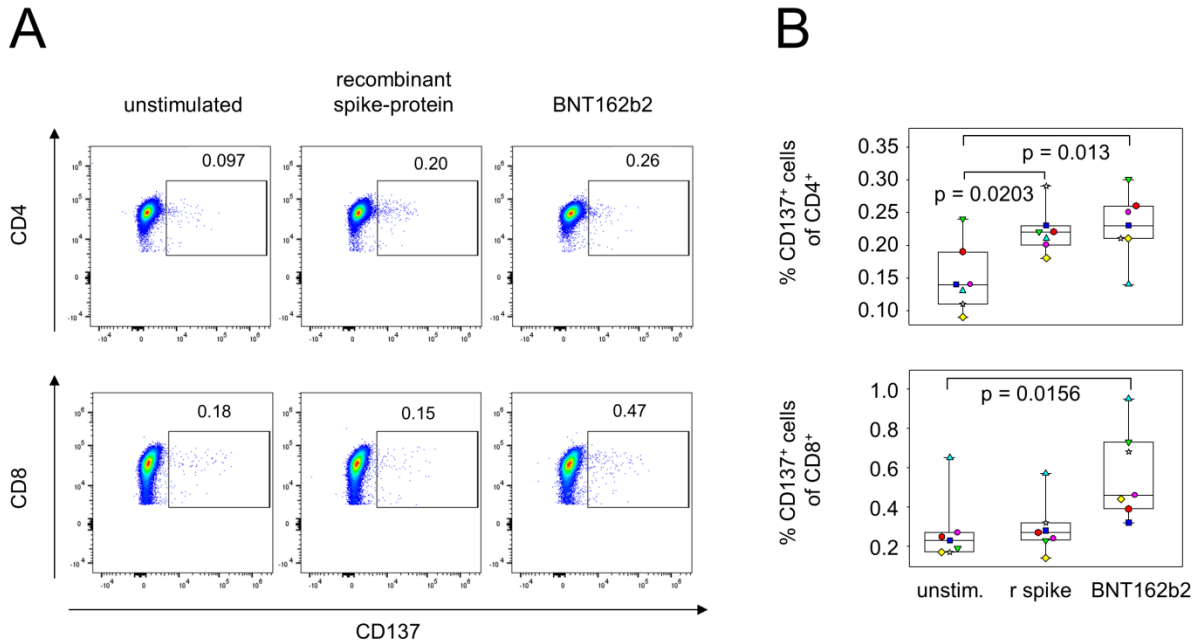
Supplementary Fig. 2 CD14⁺CD16⁺CD11b⁻CD177⁻ granulocytes were decreased after vaccination with AZD1222 only. A Pseudocolor plots for the expression of CD11b and CD177 on SSC^{hi}CD14⁺CD16⁺ granulocytes are representative for the AZD1222 vaccination group. **B** Proportions of CD177⁻CD11b⁻ granulocytes after vaccination with AZD1222 (n = 18, left panel) or BNT162b2 (n = 18, right panel). FACS analyses were gated on CD14⁺CD16⁺ granulocytes. p-values resulting from Kruskal-Wallis and Dunn's multiple comparisons tests were < 0.0001 for AZD1222 and 0.9152 for BNT162b2 analyses, respectively. *p < 0.05, **p < 0.01, ***p < 0.001



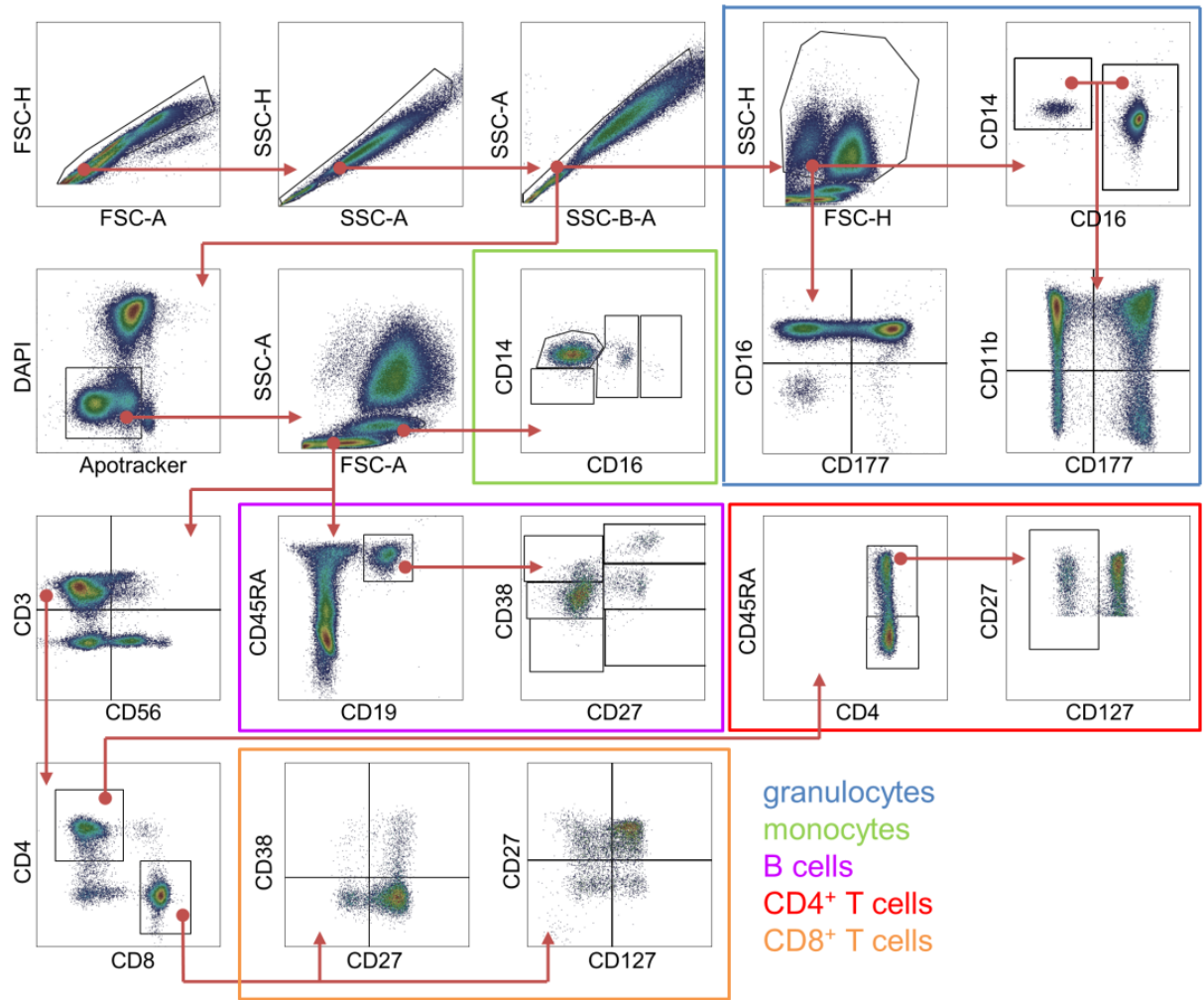
Supplementary Fig. 3 AZD1222 vaccination induced the transient increase of CD27⁻CD38⁺ terminally differentiated CD8⁺ T cells. **A** Pseudocolor plots for the expression of CD27 and CD38 on CD8⁺ T cells are representative for the AZD1222 vaccination group. **B** Proportions of CD8⁺CD27⁻CD38⁺ T cells after vaccination with AZD1222 (n = 18, left panel) or BNT162b2 (n = 18, right panel). All FACS analyses were on CD8⁺ T cells. p-values resulting from Kruskal-Wallis and Dunn's multiple comparisons tests were 0.0009 for AZD1222 and 0.7905 for BNT162b2 analyses, respectively. *p < 0.05, **p < 0.01



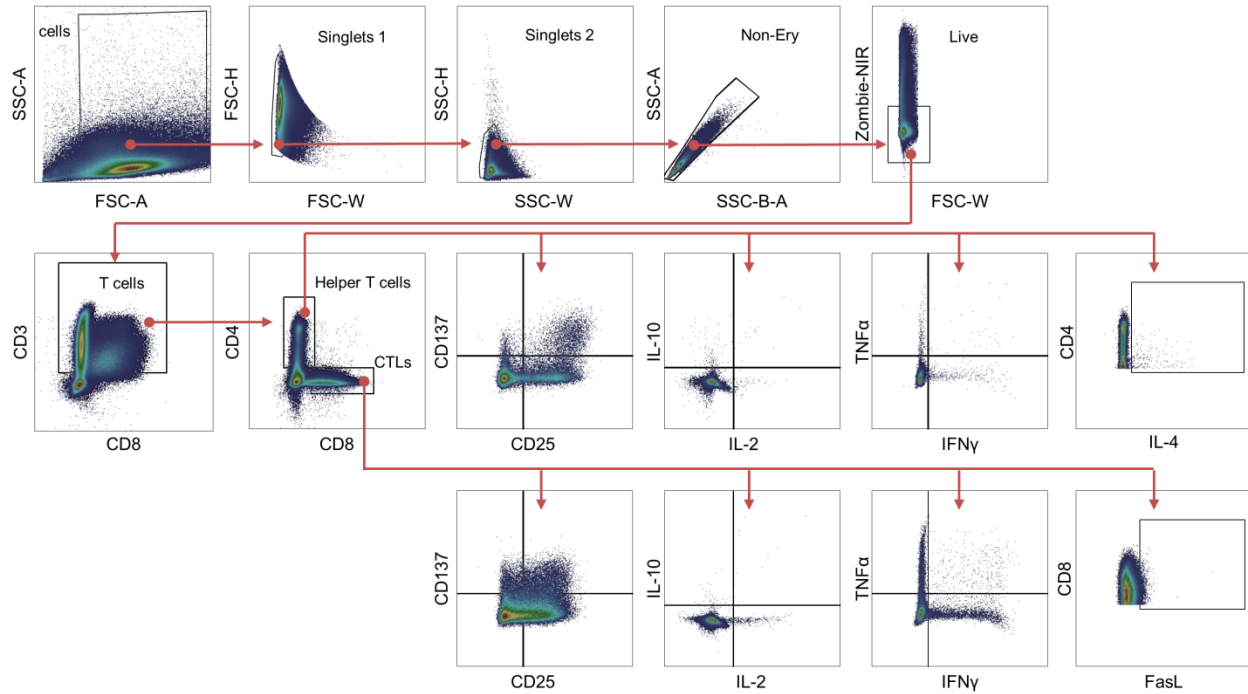
Supplementary Fig. 4 CD4⁺ effector memory T cells re-expressing RA were increased towards the end of the observation period after AZD1222 vaccination. A Pseudocolor plots for the expression of CD127 and CD27 on CD4⁺ T cells are representative for the AZD1222 vaccination group. **B** Proportions of CD4⁺CD127⁺CD27⁺ T cells after vaccination with AZD1222 (n = 18, left panel) or BNT162b2 (n = 18, right panel). All FACS analyses were on CD4⁺ T cells. p-values resulting from one-way ANOVA and Tukey-Kramer multiple comparisons tests were 0.0063 for AZD1222 and 0.4955 for BNT162b2 analyses, respectively. *p < 0.05, **p < 0.01



Supplementary Fig. 5 Establishment of a protocol for the re-stimulation of SARS-CoV-2 spike protein specific immune cells. PBMCs were isolated from fully vaccinated ($n = 6$) and COVID-19 convalescent ($n = 1$) blood donors and were in vitro re-stimulated with either recombinant spike protein (r spike) or the spike protein encoding mRNA (BNT162b2). **A** Representative pseudocolor plots showing the expression of CD137 on CD4⁺ (upper panel) or CD8⁺ T cells (lower panel) exemplifies activation. **B** Quantitative data for different stimulation regimen show that recombinant spike protein induced the enrichment of activated CD4⁺ T cells, whereas spike protein encoding mRNA was able to increase the proportions of both activated CD4⁺ and CD8⁺ T cells.



Supplementary Fig. 6 Gating scheme for the 24-colour immune-phenotyping of peripheral whole blood cells. Arrows indicate the hierarchical gating steps.



Supplementary Fig. 7 Gating scheme for the intracellular cytokine staining assay, here exemplified for PMA/Ionomycin stimulated PBMC. Expression of the activation markers CD25, CD137 as well as the cytokines IL-2, IL-10, IFN γ and TNF α were analyzed on CD4⁺ and CD8⁺ cells, respectively. IL-4 production was analyzed only on CD4⁺ cells while FasL expression was examined for CD8⁺ cells only. Arrows indicate the hierarchical gating steps.

Supplementary Table 1 Immune status during early AZD1222 vaccination response

	Day 0 (n=18)	Day 2 (n=15)	Day 6 (n=17)	Day 13 (n=16)	Day 20 (n=16)	p-value
	cells/ μ L [median]	cells / μ L [median]	cells / μ L [median]	cells / μ L [median]	cells / μ L [median]	(Kruskal-Wallis)
	(IQR)	(IQR)	(IQR)	(IQR)	(IQR)	
granulocytes	2394 (1842-3093)	632 (479-1101)	2004 (1618-2232)	2086 (1427-2862)	2107 (1355-2850)	< 0.0001
monocytes	369 (253-448)	269 (226-311)	278 (252-412)	252 (189-349)	297 (174-372)	0.3110
lymphocytes	1846 (1788-2658)	1014 (698-1262)	1803 (1560-2689)	1925 (1585-2687)	1827 (1439-2338)	0.0009
B cells	216 (140-287)	79 (57-160)	162 (126-261)	246 (187-409)	151 (122-278)	0.0019
T cells	1102 (873-1524)	560 (416-695)	1114 (969-1419)	1178 (893-1416)	1005 (750-1230)	0.0004
CD4+ T cells	684 (521-1092)	333 (262-466)	734 (596-936)	799 (584-954)	637 (494-822)	0.0026
CD8+ T cells	325 (248-358)	149 (89-185)	299 (252-337)	291 (214-351)	252 (209-313)	< 0.0001

Supplementary Table 2 Immune status during early BNT162b2 vaccination response

	Day 0 (n=18)	Day 2 (n=17)	Day 6 (n=18)	Day 13 (n=16)	Day 20 (n=17)	p-value
	cells/ μ L [median]	cells / μ L [median]	cells / μ L [median]	cells / μ L [median]	cells / μ L [median]	(Kruskal-Wallis [#])
	(IQR)	(IQR)	(IQR)	(IQR)	(IQR)	(one-way ANOVA*)
granulocytes	1330 (1132-2100)	1240 (1043-1683)	1571 (1239-2246)	1173 (831-1836)	1646 (1098-2221)	0.3834 [#]
monocytes	345 (215-420)	329 (251-391)	303 (253-371)	331 (257-389)	307 (216-407)	0.9404*
lymphocytes	1829 (1332-2076)	1816 (1335-2023)	1756 (1603-2097)	1746 (1441-2674)	1704 (1492-2401)	0.7708*
B cells	158 (125-260)	147 (132-210)	233 (136-388)	178 (120-292)	229 (125-307)	0.0885*
T cells	945 (726-1194)	799 (705-1104)	946 (641-1053)	986 (648-1219)	1046 (761-1409)	0.4438 [#]
CD4+ T cells	558 (490-617)	511 (409-578)	543 (370-606)	589 (386-754)	623 (513-849)	0.3272 [#]
CD8+ T cells	249 (183-381)	236 (167-345)	241 (197-361)	256 (196-424)	302 (230-457)	0.6468 [#]

Supplementary Table 3 Responders to vaccines

vaccine	IgM [% responders]		IgG [% responders]		IgA [% responders]	
	AZD1222	BNT162b2	AZD1222	BNT162b2	AZD1222	BNT162b2
day 0	0	0	5.3	0	0	0
day 2	0	0	0	0	0	0
day 6	0	0	11.1	0	0	5.6
day 13	52.9	26.7	47.1	86.7	11.8	100
day 20	52.9	47.1	82.4	100	23.5	100
Fisher's exact test [p value]		0.033		0.55		0.040