

Supplementary Materials

S1	Disease model structure -----	2
	Figure 1 - TB disease natural history model-----	3
S2	Open TB vs Clinical TB -----	3
S3	Symptomatic Minimal -----	4
	Figure 2 – Progression rates from minimal disease -----	5
S4	Data inclusion and exclusion -----	6
S4.1	Data types-----	6
S4.2	Timings-----	6
S4.3	Included data-----	6
	Table 1- Included data -----	6
S4.4	Excluded data -----	17
	Table 2 – Excluded data-----	17
S5	Fitting process -----	21
	Figure 3 – Trace plots -----	22
	Figure 4 – Correlation plots-----	23
S5.1	Weighting -----	23
S5.2	Recovery from Minimal -----	24
	Figure 5 – Recovery from minimal -----	24
S5.3	Duration of disease-----	25
S5.4	True Minimals-----	25
	Table 3 – True minimal -----	25
	Figure 6 – Meta analysis on true minimal-----	25
S6	Disease pathways -----	26
	Figure 7 – Trajectories, TB death -----	26
	Figure 8 – Trajectories, TB recovery -----	26
	Figure 9 – Trajectories, subclinical-----	27
	Figure 10 – Trajectories, clinical-----	27
	Figure 11 – Trajectories, minimal -----	28
	Figure 12 – Trajectories, undulating 1-----	28
	Figure 13 – Trajectories, undulating 2-----	29
S7	Duration of symptoms -----	29
S8	Additional results -----	32
	Figure 14 – Duration from subclinical disease-----	33
	Figure 15 – Duration from clinical disease -----	34
	Figure 16 – Duration from minimal disease -----	35
	Figure 17 – Duration from clinical/subclinical even split -----	36
	Figure 18 – Duration from clinical/subclinical 70/30 split -----	37
	Figure 19 – Duration from clinical/subclinical 30/70 split -----	38
S9	Sensitivity Analyses -----	38
S9.1	Fitting-----	38
S9.1.1	Bootstrap studies -----	38
	Table 4 – Sensitivities, bootstrapped -----	39
S9.1.2	Change recovery-----	40
	Table 5 – Sensitivities, recovery from minimal -----	40
S9.1.3	Change duration of infectiousness-----	40

Table 6 – Sensitivities, duration of infectiousness -----	40
S9.1.4 Change proportion of minimal “true minimal” -----	40
Table 7 – Sensitivities, proportion of true minimal -----	40
S9.1.5 Change assumption on persistent symptoms -----	41
Table 8 – Sensitivities, unreported symptoms -----	41
S9.2 Cohort model-----	41
S9.2.1 Parameter values-----	41
Table 9 – Sensitivities, parameter choice in analysis -----	41
S9.2.2 Treatment -----	42
Table 10 – Sensitivities, effect of treatment -----	42
S9.2.3 Trajectories-----	42
Table 11 – Sensitivities, undulation definition, months-----	42
Table 12 – Sensitivities, undulation definition, state changes -----	43
References -----	44

S1 Disease model structure

Our model structure focuses on the spectrum of disease, with infection and progression from infection already assumed to have happened. We split the progression into three states, as shown in figure 1; minimal, subclinical, and clinical disease.

Minimal disease is the earliest stage of disease from infection, being non-infectious, but with pathological changes to the lung visible on, originally, chest x-ray but also other forms of chest imaging such as computed tomography (CT). Along with being the first stage of disease after infection, minimal is the final stage before recovery, with regression back to minimal possible within the spectrum framework, and then natural recovery from disease possible.

In the forward progression, the stage after minimal is subclinical. This is an infectious disease state, but without sufficient symptoms to present for screening. In other words, this is an infectious but asymptomatic state. Within the spectrum, there is progression to clinical disease (i.e. development of symptoms) and regression to minimal disease (i.e. becoming non-infectious) from subclinical disease.

Clinical disease, symptomatic and infectious, is the final disease state. This state can only be reached by passing through minimal and subclinical first. As with the other two states, there are two transition possibilities out of clinical disease, regression to subclinical disease (i.e. resolution of symptoms but remaining infectious), and death from TB.

In the model structure, there is possibility to both progress and regress, but in visualising the model, such as figure 1, arrows that point right indicate the disease progressing to a more severe state, and arrows that point left indicate the disease regressing to a less severe state.

Disease State	Minimal	Subclinical	Clinical
Clinical description	Radiological changes attributable to TB but sputum negative (non-infectious)	Sputum positive TB disease that does not pass a symptom screen (infectious)	Symptomatic and sputum positive TB disease (infectious)
Systematic review tests	Chest x-ray or fluoroscopy positive Smear or culture negative	Smear or culture positive Symptom negative	Smear or culture positive Symptom positive
Systematic review notation	cxr.pos micro.neg symp.pos/neg/unk	cxr.pos micro.pos symp.neg	cxr.pos micro.pos symp.pos

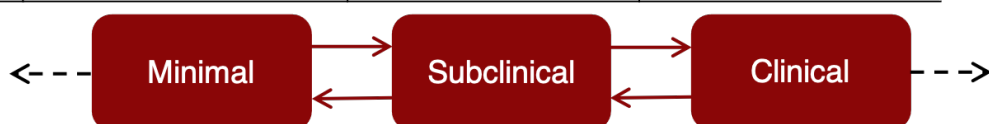


Figure 1 - TB disease natural history model

States and transitions in red are considered in the model fitting, with dashed parameters holding a fixed value and solid transitions being estimated from the data. Each state is defined by a clinical description and the tests that would have been used in clinical settings at the time our data was recorded with the notation used for data collection in table S4 described in the final row. The black dashed lines out from minimal and clinical are recovery and TB mortality respectively.

S2 Open TB vs Clinical TB

In a systematic review, Tiemersma et al describe how study results were interpreted as having people with either smear negative or smear positive disease:¹

in studies where patients were described as having “open” tuberculosis or “bacillary tuberculosis” before 1930 (when culture became available) we assumed that these patients were smear-positive.

This definition is maintained in the work of Ragonnet et al.²

As we were not attempting to stratify bacteriological status any further by smear status, we instead interpreted bacillary tuberculosis as simply bacteriologically positive. The definition of “open” tuberculosis was less clear cut, with different studies choosing different explanations.

Szucs, in 1926, defines open and closed tuberculosis based solely on the symptom status of the individual:³

Among others, we classify tuberculous patients as open and closed cases, based on the presence or absence of expectoration.

However, they point out that absence of symptoms does not indicate a negative bacteriological status, in essence diagnosing their patients with subclinical disease using more modern terminology.

We succeeded in demonstrating the presence of tubercle bacilli in the spray of two of our recently admitted patients in the absence of any expectoration.

Another study in 1947 provides a different definition for open and closed. Tattersall compares his work with that of Lindhardt in Denmark, stating that:^{4,5}

These results accord closely with Lindhardt's finding in Denmark during the same period, which enhances the value of comparison of the present series of sputum +ve cases with the results of the Danish survivals of open cases.

This suggests that rather than open being equivalent to clinical and closed being equivalent to subclinical, open is actually all bacteriologically positive disease (i.e. subclinical and clinical).

Finally, Bland, in 1946 states that Illinois state defines that all cases that were bacteriologically positive must be defined as open TB, using the same definition as Tattersall.⁶ However he also considers the possibility of infection from closed TB.

All cases in which a positive sputum has been shown must by Illinois law be considered open for a period of at least three months and thereafter until three successive specimens of sputum, collected at intervals of one week, contain no tubercle bacilli... Although a so-called "closed" case is not as grave a source of infection as a frankly open one, it is more insidious.

Our definition of clinical aligns closely with the National Tuberculosis Association's definition of "active" TB, as described in their diagnostic standards from 1940.⁷ By this point there was less focus on open and closed definitions and more consideration of symptoms and bacteriology together:

Symptoms unchanged, worse or less severe, but not completely abated. Lesions not completely healed or progressive according X-ray examination. Sputum almost always contains tubercle bacilli.

Overall, the definitions of "open" tuberculosis and the final definition of "active" tuberculosis do not differ significantly, and again are not dissimilar to our definition of clinical disease. Therefore, where Ragonnet et al have provided a TB mortality rate for smear positive TB, we are instead using this number as the TB mortality rate from clinical TB disease.²

S3 Symptomatic Minimal

Minimal disease was classified as when an individual had radiological changes attributable to TB but negative bacteriology, regardless of symptoms. Although progressing from a potentially symptomatic bacteriologically negative state to an asymptomatic bacteriologically positive seems unlikely, a number of sources suggested that there was no need to consider an alternative progression for symptomatic minimal.

Firstly, there is insufficient data to show an obvious split in progression between symptomatic and asymptomatic bacteriologically negative individuals (see figure 2), the

diagnostic standards from the 1940s placed significantly less weight on symptoms if they were not accompanied by a positive sputum, and the prevalence survey in Cambodia in 2002 found that symptoms in culture negative individuals were not associated with future bacteriological positivity.^{7,8} We also know that TB symptoms are highly non-specific, and so there is no guarantee that symptoms occurring whilst an individual has minimal disease are actually caused by TB and not by something else.

Therefore, we have considered all bacteriologically negative individuals to be minimal, regardless of symptom status.

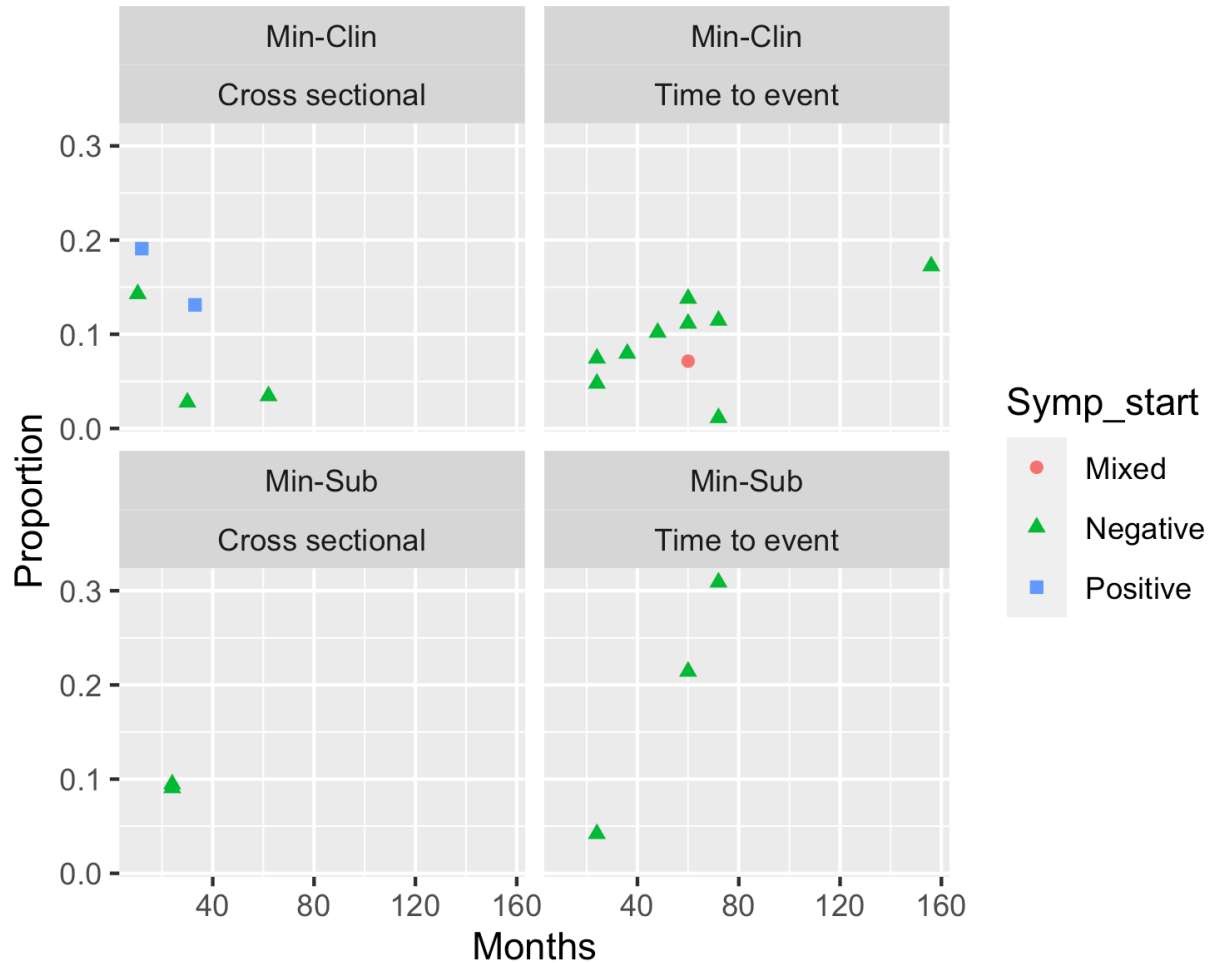


Figure 2 – Progression rates from minimal disease
The different progression rates for minimal disease, based on symptoms, transition, and record type

S4 Data inclusion and exclusion

S4.1 Data types

As explained in the main text, there were two study types included. In table 1 we report the data types for each line of data, in column “Follow-up method”. There were 39 data points reported as time to event, and 18 reported as cross sectional.

S4.2 Timings

For cross-sectional data, if an average follow-up time was given, that is the time used. Otherwise, if a minimum and maximum follow-up time was given, the times have been summed and halved to give the follow-up time used. For time-to-event data, the maximum follow-up time given was used. The times in table 1, column “Months of follow-up” reflect these choices.

S4.3 Included data

All data that was included in the final data fit is in table 1.

Table 1- Included data

A table on all the studies included, the model transitions they parameterise, and, where applicable, notes on why a certain decision has been taken. The number of repeats column reports the number of data points that a study provides within a single transition. This is then used to calculate the effective number of people transitioned and the effective cohort size (divides the true numbers which are then rounded to the nearest integer) to appropriately weight each data point so that each study is considered as one.

First Author	Ref	Study Continent	Year	Start states	End states	Number transitioned	Cohort size	Months of follow-up	Follow-up method	Model transition	Number of repeats	Effective number transitioned	Effective cohort size	Notes
Downes	9	North America	1935	cxr.pos micro.pops sympt.pops	cxr.pos micro.neg sympt.neg	27	342	12.0	time to event	Clin-Min	5	5	68	
Downes	9	North America	1935	cxr.pos micro.pops sympt.pops	cxr.pos micro.neg sympt.neg	104	342	24.0	time to event	Clin-Min	5	21	68	

Downes	9	North America	1935	cxr.pos micro.pos sympt.pos	cxr.pos micro.neg sympt.neg	140	342	36.0	time to event	Clin-Min	5	28	68	
Downes	9	North America	1935	cxr.pos micro.pos sympt.pos	cxr.pos micro.neg sympt.neg	158	342	48.0	time to event	Clin-Min	5	32	68	
Downes	9	North America	1935	cxr.pos micro.pos sympt.pos	cxr.pos micro.neg sympt.neg	171	342	60.0	time to event	Clin-Min	5	34	68	
Beeuwkes	10	North America	1938	cxr.pos micro.neg sympt.neg	cxr.unk micro.pos sympt.pos	16	122	33.0	cross sectional	Min-Clin	1	16	122	merged 2 groups exhibiting same start and end
Beeuwkes	10	North America	1938	cxr.pos micro.pos sympt.pos	cxr.unk micro.neg sympt.unk	10	28	33.0	cross sectional	Clin-Min	1	10	28	
Puffer	11	North America	1943	cxr.pos micro.neg sympt.neg	cxr.pos micro.pos sympt.pos	19	528	62.0	cross sectional	Min-Clin	1	19	528	merged 2 groups exhibiting same start and end

Puffer	11	North America	1943	cxr.pos micro.pos sympt.pos	cxr.pos micro.neg sympt.neg	92	384	62.0	cross sectional	Clin-Min	1	92	384	
Orrego Puelma	12	South America	1945	cxr.pos micro.neg sympt.unk	cxr.pos micro.pos sympt.unk	18	67	24.0	cross sectional	Min-Inf	1	18	67	
Bobrowitz	13, 14	North America	1945	cxr.pos micro.neg sympt.unk	cxr.pos micro.pos sympt.unk	26	191	60.0	cross sectional	Min-Inf	1	26	191	
Lincoln	16, 17	North America	1947	cxr.pos micro.mix sympt.unk	cxr.pos micro.neg sympt.unk	45	134	24.0	time to event	Clin-Min	6	8	22	majority tested were micro pos and all reported as active based on NTA definitions
Lincoln	16, 17	North America	1947	cxr.pos micro.mix sympt.unk	cxr.pos micro.neg sympt.unk	71	134	36.0	time to event	Clin-Min	6	12	22	majority tested were micro pos and all reported

Lincoln	16, 17	North America	19 47	cxr.pos micro.m x sympt.un k	cxr.pos micro.neg sympt.un k	80	134	48.0	time to event	Clin- Min	6	13	22	majorit y tested were micro pos and all reporte d as active baseed on NTA definiti ons
Lincoln	16, 17	North America	19 47	cxr.pos micro.m x sympt.un k	cxr.pos micro.neg sympt.un k	83	134	60.0	time to event	Clin- Min	6	14	22	majorit y tested were micro pos and all reporte d as active baseed on NTA definiti ons
Lincoln	16, 17	North America	19 47	cxr.pos micro.m x	cxr.pos micro.neg sympt.un k	86	134	72.0	time to event	Clin- Min	6	14	22	majorit y tested were micro

				sympt.un k										pos and all reporte d as active baseed on NTA definiti ons
Lincoln	16, 17	North Americ a	19 47	cxr.pos micro.mi x sympt.un k	cxr.pos micro.neg sympt.un k	87	134	84.0	time to event	Clin- Min	6	15	22	majorit y tested were micro pos and all reporte d as active baseed on NTA definiti ons
Childress	15	North Americ a	19 47	cxr.pos micro.ne g sympt.ne g	cxr.pos micro.pos sympt.po s	5	35	10.4	cross sectio nal	Min- Clin	1	5	35	
Lincoln	16, 17	North Americ a	19 47	cxr.pos micro.ne g sympt.un k	cxr.pos micro.rel apse sympt.un k	15	314	24.0	time to event	Min- Clin	5	3	63	majorit y tested were micro pos and all reporte d as active

														based on NTA definitions
Lincoln	16, 17	North America	19 47	cxr.pos micro.netg sympt.unknown	cxr.pos micro.relapse sympt.unknown	25	314	36.0	time to event	Min-Clin	5	5	63	
Lincoln	16, 17	North America	19 47	cxr.pos micro.netg sympt.unknown	cxr.pos micro.relapse sympt.unknown	32	314	48.0	time to event	Min-Clin	5	6	63	
Lincoln	16, 17	North America	19 47	cxr.pos micro.netg sympt.unknown	cxr.pos micro.relapse sympt.unknown	35	314	60.0	time to event	Min-Clin	5	7	63	
Lincoln	16, 17	North America	19 47	cxr.pos micro.netg sympt.unknown	cxr.pos micro.relapse sympt.unknown	36	314	72.0	time to event	Min-Clin	5	7	63	
Alling	16, 19	North America	19 48	cxr.pos micro.netg sympt.unknown	cxr.pos micro.relapse sympt.unknown	8	58	60.0	time to event	Min-Clin	2	4	29	
Alling	16, 19	North America	19 48	cxr.pos micro.netg sympt.unknown	cxr.pos micro.relapse sympt.unknown	10	58	156.0	time to event	Min-Clin	2	5	29	

Marshall	18	Europe	19 48	cxr.pos micro.pos sympt.pos	cxr.pos micro.neg sympt.un k	1	52	6.0	cross sectio nal	Clin- Min	1	1	52	
Borgen	20, 21	Europe	19 49	cxr.pos micro.neg sympt.pos	cxr.pos micro.pos sympt.pos	4	144	30.0	cross sectio nal	Min- Clin	1	4	144	merged 2 groups exhibiti ng same start and end
Manser	22	Europe	19 51	cxr.pos micro.pos sympt.un k	cxr.pos micro.neg sympt.un k	15	40	6.0	cross sectio nal	Clin- Min	1	15	40	
Breu	23	Europe	19 52	cxr.pos micro.neg sympt.un k	cxr.pos micro.pos sympt.un k	48	904	25.5	cross sectio nal	Min- Inf	1	48	904	
Sikand	24	Asia	19 58	cxr.pos micro.neg sympt.un k	cxr.pos micro.pos sympt.un k	38	319	12.0	time to event	Min- Inf	1	38	319	
Tubercul osis Society of Scotland	25, 26	Europe	19 59	cxr.pos micro.neg sympt.neg	cxr.pos micro.pos sympt.un k	9	95	24.0	cross sectio nal	Min- Sub	1	9	95	assume lack of sysmpt om persists

Frimodt-Moller	27	Asia	1961	cxr.pos micro.negative symptom	cxr.pos micro.pos symptom	11	86	12.0	time to event	Min-Inf	3	4	29
Frimodt-Moller	27	Asia	1961	cxr.pos micro.negative symptom	cxr.pos micro.pos symptom	18	86	24.0	time to event	Min-Inf	3	6	29
Frimodt-Moller	27	Asia	1961	cxr.pos micro.negative symptom	cxr.pos micro.pos symptom	25	86	36.0	time to event	Min-Inf	3	8	29
Pamra	37	Asia	1968	cxr.pos micro.negative symptom	cxr.pos micro.pos symptom	2	178	72.0	time to event	Min-Clin	1	2	178
Pamra	37	Asia	1968	cxr.pos micro.negative symptom	cxr.pos micro.pos symptom	55	178	72.0	time to event	Min-Sub	1	55	178
National Tuberculosis Institute	28-36	Asia	1968	cxr.pos micro.negative symptom	cxr.pos micro.pos symptom	23	329	18.0	cross sectional	Min-Inf	2	12	165
National Tuberculosis Institute	28-36	Asia	1968	cxr.pos micro.negative	cxr.pos micro.pos	36	271	60.0	cross sectional	Min-Inf	2	18	136

				sympt.un k	sympt.un k											
National Tubercul osis Insitute	28- 36	Asia	19 68	cxr.pos micro.po s sympt.un k	cxr.pos micro.neg sympt.un k	86	269	18.0	cross sectio nal	Inf- Min	2	43	135			
National Tubercul osis Insitute	28- 36	Asia	19 68	cxr.pos micro.po s sympt.un k	cxr.pos micro.neg sympt.un k	70	178	36.0	cross sectio nal	Inf- Min	2	35	89			
Gothi	30	Asia	19 72	cxr.pos micro.ne g sympt.un k	cxr.pos micro.pos sympt.un k	11	53	3.0	time to event	Min- Inf	2	6	27			
Gothi	30	Asia	19 72	cxr.pos micro.ne g sympt.un k	cxr.pos micro.pos sympt.un k	15	53	6.0	time to event	Min- Inf	2	8	27			
Aneja	38	Asia	19 77	cxr.pos micro.ne g sympt.po s	cxr.pos micro.pos sympt.un k	21	110	12.0	cross sectio nal	Min- Clin	1	21	110	assume sympto ms persist		
Hong Kong Chest Service	39- 42	Asia	19 81	cxr.pos micro.ne g sympt.mi xed	cxr.pos micro.pos sympt.un k	40	176	3.0	time to event	Min- Inf	8	5	22			

Hong Kong Chest Service	39-42	Asia	1981	cxr.pos micro.net sympt.mixed	cxr.pos micro.pos sympt.un k	49	176	6.0	time to event	Min- Inf	8	6	22
Hong Kong Chest Service	39-42	Asia	1981	cxr.pos micro.net sympt.mixed	cxr.pos micro.pos sympt.un k	61	176	12.0	time to event	Min- Inf	8	8	22
Hong Kong Chest Service	39-42	Asia	1981	cxr.pos micro.net sympt.mixed	cxr.pos micro.pos sympt.un k	67	176	18.0	time to event	Min- Inf	8	8	22
Hong Kong Chest Service	39-42	Asia	1981	cxr.pos micro.net sympt.mixed	cxr.pos micro.pos sympt.un k	69	176	24.0	time to event	Min- Inf	8	9	22
Hong Kong Chest Service	39-42	Asia	1981	cxr.pos micro.net sympt.mixed	cxr.pos micro.pos sympt.un k	70	176	30.0	time to event	Min- Inf	8	9	22
Hong Kong Chest Service	39-42	Asia	1981	cxr.pos micro.net sympt.mixed	cxr.pos micro.pos sympt.un k	71	176	36.0	time to event	Min- Inf	8	9	22
Hong Kong Chest Service	39-42	Asia	1981	cxr.pos micro.net	cxr.pos micro.pos	71	176	60.0	time to event	Min- Inf	8	9	22

Cowie	43	Africa	1984	sympt.mixed cxr.pos micro.netg sympt.un k	sympt.un k cxr.pos micro.pos sympt.un k	88	152	58.0	time to event	Min- Inf	1	88	152	
Norregard	45	Europe	1985	cxr.pos micro.netg sympt.mixed	cxr.pos micro.pos sympt.netg	6	28	60.0	time to event	Min- Sub	1	6	28	
Norregard	45	Europe	1985	cxr.pos micro.netg sympt.mixed	cxr.pos micro.pos sympt.poss	2	28	60.0	time to event	Min- Clin	1	2	28	
Anastastu	44	Europe	1985	cxr.pos micro.netg sympt.netg	cxr.pos micro.pos sympt.un k	6	143	24.0	time to event	Min- Sub	1	6	143	assume lack of symptom persists
Okada	8	Asia	2004	cxr.pos micro.netg sympt.netg	cxr.pos micro.pos sympt.un k	28	309	24.0	cross sectional	Min- Sub	1	28	309	split group by symptoms dependent on proportion found in prevalence

Okada	8	Asia	2004	cxr.pos micro.neg sympt.neg	cxr.pos micro.pos sympt.pos	23	309	24.0	time to event	Min-Clin	1	23	309	nce survey added in 39% (18) of those picked up at 2 year follow-up using known subclinical proportion at prevalence surveys
-------	---	------	------	-----------------------------------	-----------------------------------	----	-----	------	---------------	----------	---	----	-----	--

S4.4 Excluded data

As can be seen in table 2, some of the data that was originally extracted for the wider review was not eligible for this work. In total 20 cohorts were excluded, from from 10 different studies. Most (NA) rows of data that were excluded, had an initial state with x-ray negative, and one study was observing a cohort who, although already x-ray positive, were not expected to progress to infectious TB disease. Others were excluded for too much uncertainty within the start and end states, or changes only within states, such as change in x-ray severity, but no change in bacteriological or symptom status. These reasonings are laid out in table 2

Table 2 - Excluded data

A table on all the studies excluded and reasons why they have not been included

Author	Ref	Year	Continent	Start state	End state	Number transitioned	Cohort size	Follow up time	Notes on exclusion
Beeuwkes	10	1938	North America	cxr.neg micro.neg sympt.neg	cxr.unk micro.pos sympt.pos	1	784	33	initial state x-ray negative

Beeuwkes	10	1938	North America	cxr.neg micro.neg sympt.neg	cxr.unk micro.neg sympt.pos	3	784	33	initial state x-ray negative
National Tuberculosis Insitute	28-36	1968	Asia	cxr.neg micro.neg sympt.unk	cxr.pos micro.pos sympt.unk	44	31490	18	initial state x-ray negative
National Tuberculosis Insitute	28-36	1968	Asia	cxr.neg micro.neg sympt.unk	cxr.pos micro.pos sympt.unk	99	17936	60	initial state x-ray negative
Borgen	20,21	1949	Europe	cxr.neg micro.unk sympt.unk	cxr.pos micro.pos sympt.pos	4	6684	30	initial state x-ray negative
Madsen	46	1940	Europe	cxr.neg micro.unk sympt.neg	cxr.pos micro.mix sympt.unk	4	2071	12	initial state x-ray negative
Madsen	46	1940	Europe	cxr.neg micro.unk sympt.neg	cxr.pos micro.mix sympt.unk	7	2071	24	initial state x-ray negative
Madsen	46	1940	Europe	cxr.neg micro.unk sympt.neg	cxr.pos micro.mix sympt.unk	10	2071	36	initial state x-ray negative
Madsen	46	1940	Europe	cxr.neg micro.unk sympt.neg	cxr.pos micro.mix sympt.unk	11	2071	48	initial state x-ray negative
Madsen	46	1940	Europe	cxr.neg micro.unk sympt.neg	cxr.pos micro.mix sympt.unk	16	2071	60	initial state x-ray negative
Madsen	46	1940	Europe	cxr.neg micro.unk sympt.neg	cxr.pos micro.mix sympt.unk	17	2071	72	initial state x-ray negative
Okada	8	2004	Asia	cxr.neg	cxr.pos	32	21580	24	initial state x-ray negative

Okada	8	2004	Asia	micro.neg sympt.neg cxr.pos	micro.pos sympt.unk cxr.neg	26	309	24	ends outside disease
International Union Against Tuberculosis Committee on Prophylaxis	47	1982	Europe	micro.neg sympt.neg cxr.pos	micro.neg sympt.unk cxr.pos	97	6990	60	cohort not expected to progress - effectively initial state x-ray negative
Sikand	24	1958	Asia	micro.unk sympt.unk cxr.neg	micro.pos sympt.unk cxr.pos	89	11268	43	initial state x-ray negative
Sikand	24	1958	Asia	micro.unk sympt.unk cxr.neg	micro.neg sympt.unk cxr.pos	251	11268	43	initial state x-ray negative
Groth-Petersen	48,49	1952	Europe	micro.unk sympt.unk cxr.neg	micro.mix sympt.unk cxr.pos	59	45953	24	initial state x-ray negative
Groth-Petersen	48,49	1952	Europe	micro.unk sympt.unk cxr.neg	micro.mix sympt.unk cxr.pos	108	45953	48	initial state x-ray negative
Groth-Petersen	48,49	1952	Europe	micro.unk sympt.unk cxr.neg	micro.mix sympt.unk cxr.pos	64	116639	24	initial state x-ray negative
Groth-Petersen	48,49	1952	Europe	micro.unk sympt.unk cxr.neg	micro.mix sympt.unk cxr.pos	147	116639	48	initial state x-ray negative
Groth-Petersen	48,49	1952	Europe	micro.unk sympt.unk cxr.neg	micro.mix sympt.unk cxr.pos	73	103373	48	initial state x-ray negative
Groth-Petersen	48,49	1952	Europe	micro.unk cxr.neg	micro.mix cxr.pos	35	69607	48	initial state x-ray negative

Groth-Petersen	48,49	1952	Europe	sympt.unk cxr.pos micro.unk	sympt.unk cxr.pos micro.mix	46	2877	48	too much uncertainty
Groth-Petersen	48,49	1952	Europe	sympt.unk cxr.pos micro.unk	sympt.unk cxr.pos micro.mix	64	9693	48	too much uncertainty
Groth-Petersen	48,49	1952	Europe	sympt.unk cxr.pos micro.unk	sympt.unk cxr.pos micro.mix	43	11366	48	too much uncertainty
Groth-Petersen	48,49	1952	Europe	sympt.unk cxr.pos micro.unk	sympt.unk cxr.pos micro.mix	45	12400	48	too much uncertainty
Styblo	50	1965	Europe	sympt.unk cxr.neg micro.neg	sympt.unk cxr.unk micro.pos	241	73000	30	initial state x-ray negative
Rubinshteyn	51	1940	Russia	sympt.neg	sympt.unk	NA	NA	NA	initial state x-ray negative

S5 Fitting process

The equations to define the model system are:

$$\begin{aligned}\frac{dM}{dt} &= -m_s * M + s_m * S - r * M \\ \frac{dS}{dt} &= m_s * M - s_m * S - s_c * S + c_s * C \\ \frac{dC}{dt} &= s_c * S - c_s * C - d * C\end{aligned}$$

where:

- M , S , and C are the states for minimal, subclinical, and clinical respectively
- m_s , s_m , s_c , and c_s are transitions between the states, where the first letter is the start state and the second letter is the end state
- r is recovery from minimal disease
- d is death from clinical disease (there is no other death included in the model)

As the data described how a cohort changed over time, and described only one outcome, the fitting process used a model system for each of the transitions and data types, totalling 16 different versions of the model system. Full code will be available on GitHub.

We used uniform priors for the four estimated parameters, all with a range of 0 to 12, where 12 would be equivalent to changing state once a month. During the fitting process, potential parameters are trialled within this range. Figure 3 shows the different parameter values that were accepted over the 10,000 iterations of the model fit.

These accepted parameters in turn, inform figure 4, which shows the correlation between two parameters. It also shows the overall distribution of the accepted parameters. We see a strong positive correlation between the parameters that control transition between minimal and subclinical; as one transition increases, the other also has to increase to prevent there being excess people in one state and too few in another. We also see this with the parameters that control transition between subclinical and clinical.

The rest of the pairings have slightly weaker, negative correlations. This is clearest with the subclinical to minimal and subclinical to clinical pairing, as if one increases, the other has to decrease to make sure that there are still sufficient individuals in subclinical to fit the data.

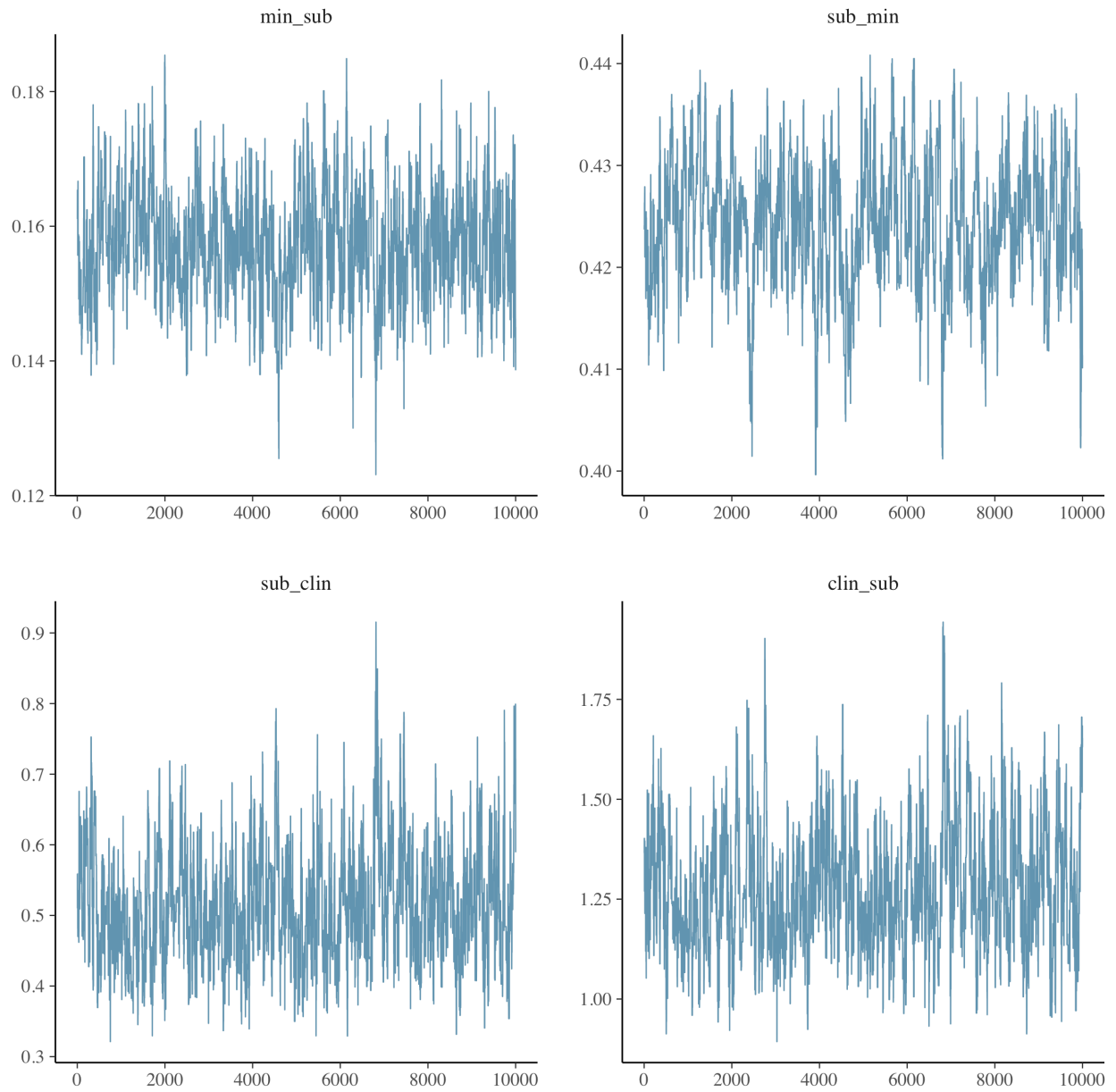


Figure 3 - Trace plots
The traces of the accepted parameter range from the fitting process

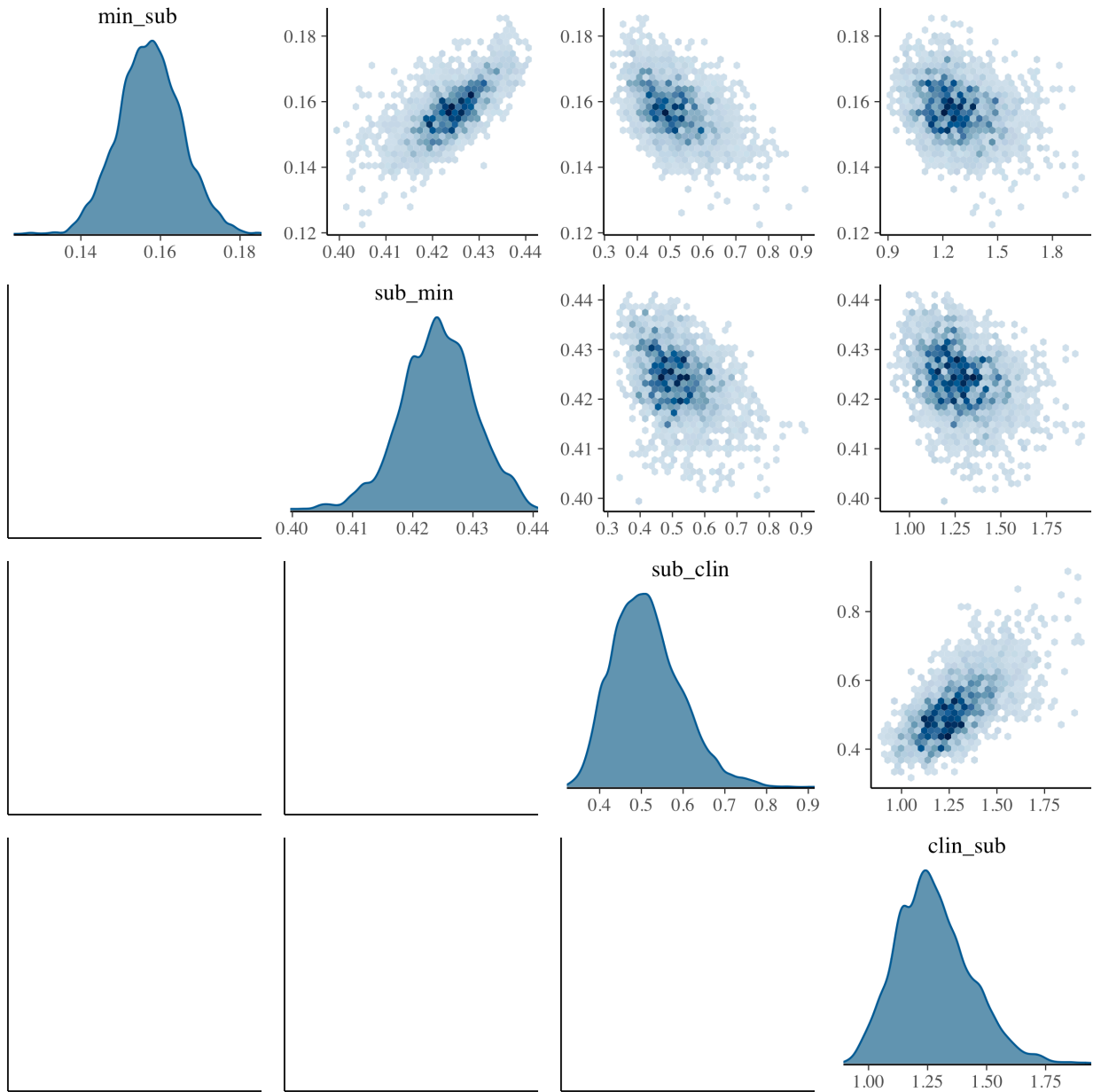


Figure 4 – Correlation plots

The distributions of and correlations between the accepted parameters from the fitting process

S5.1 Weighting

When calculating the likelihood, larger studies were weighted by the original cohort size to reflect the increased confidence that such studies provide. Thus larger cohorts have a heavier weighting and constrain the model more.

In order to prevent a single study with multiple observations being over-represented in the fit of a transition, we down-weighted both the sample size and the number of people transitioning by the number of repeated observations. This maintains the observed proportion to transition whilst reducing confidence and thus importance given to each

individual data point within the study. This is shown in table 1, with the number of repeats and the re-calculated effective cohort size and number transitioning. This ensures that the proportion remains the same, but less weight is given to each individual data point.

S5.2 Recovery from Minimal

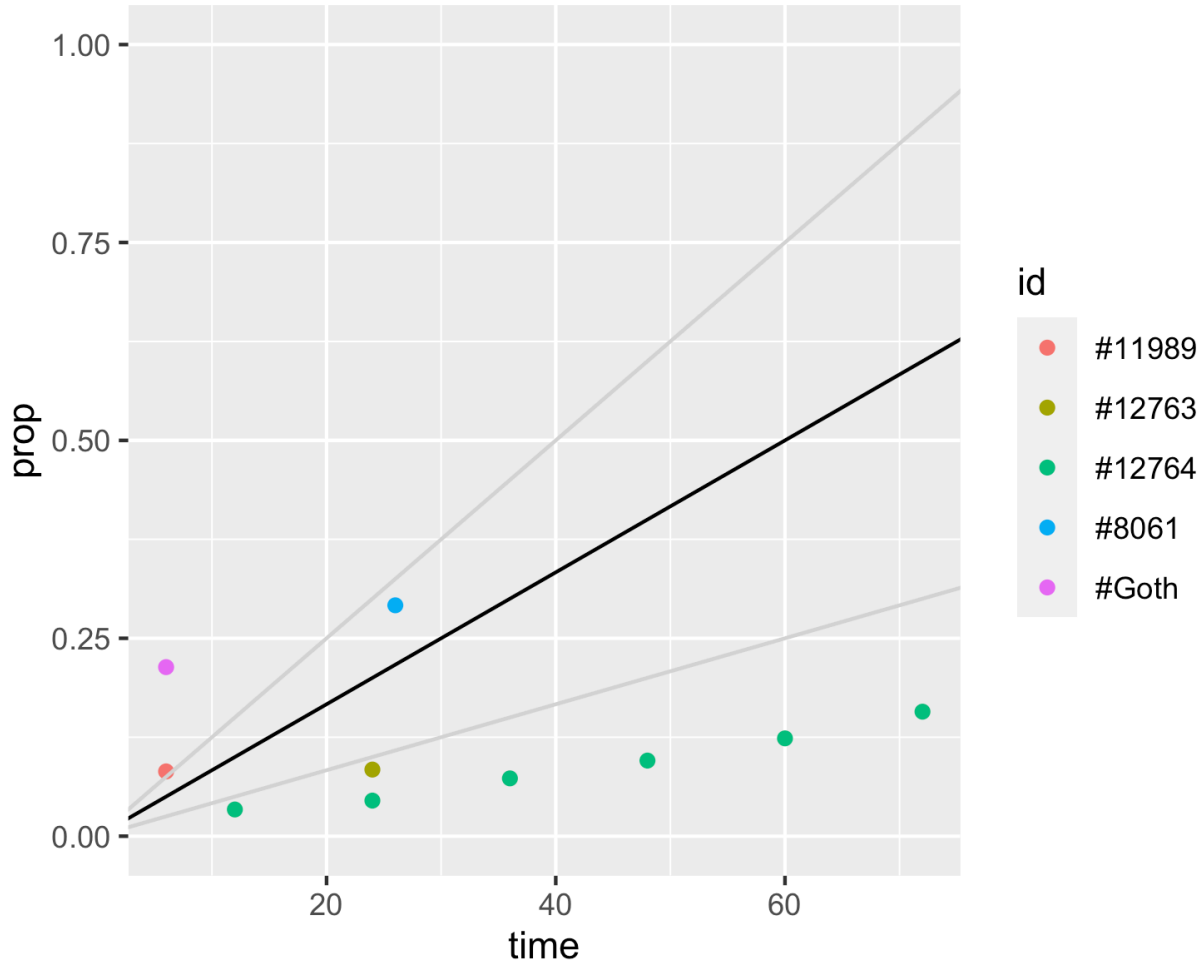


Figure 5 – Recovery from minimal
The 5 studies that informed the rate of recovery from minimal

The data informing the rate of recovery from minimal come from papers found during the systematic review, although not all the studies have been included in the rest of the analysis as they did not provide the data required within the three disease states. Recovery is defined as a change from a positive x-ray to a negative x-ray. There are 5 studies that were included, one of which was a time-to-event study, the remainder are cross sectional. Figure 5 shows these points alongside three lines of fit - the best line at 0.1/yr, and two sensitivity lines at 0.05 and 0.15/yr, all three of which have been recorded in table 5. As the data are not entirely consistent, we have included a third sensitivity analysis where we excluded recovery entirely.

S5.3 Duration of disease

Tiemersma et al estimated the mean duration of disease from a study conducted in Bangalore in the 1960s by the National Tuberculosis Institute.^{1,28} The main result was that the mean duration of infectious disease was approximately 3 years, and given the distribution, the median duration of disease is approximately 2 years.

S5.4 True Minimals

Determining who truly has TB when the only test is an x-ray is difficult, however, using tuberculin skin test (TST) as a proxy for determining whether a positive x-ray is a result of TB infection progressing to disease, we can estimate the proportion of people classed as minimal that are actually minimal. These papers were not selected systematically but span a range of time and location. Table 3 shows each of the studies, the number of people who were found to be x-ray positive in the study, and then the number of those who were also TST negative.

Table 3 – True minimal

The different studies that contributed towards the decision to reduce the proportion of people with positive x-rays that were considered to be truly minimal

Author	xray_pos	tst_neg
Groth-Petersen, 1959	37494	6097
Roelsgaard, 1964	2857	772
Roelsgaard, 1961	559	169
Scheel, 1937	255	54
National Tuberculosis Institute, 1974	3761	1848

Applying a meta analysis to this, we find that the fixed effects result is 20% of x-ray positives are not caused by TB, and the random effects suggests 28%, as can be seen in figure 6. Therefore throughout this paper we have assumed that 25% of all x-ray positives are non-TB, and thus reduced every cohort that starts in minimal accordingly.

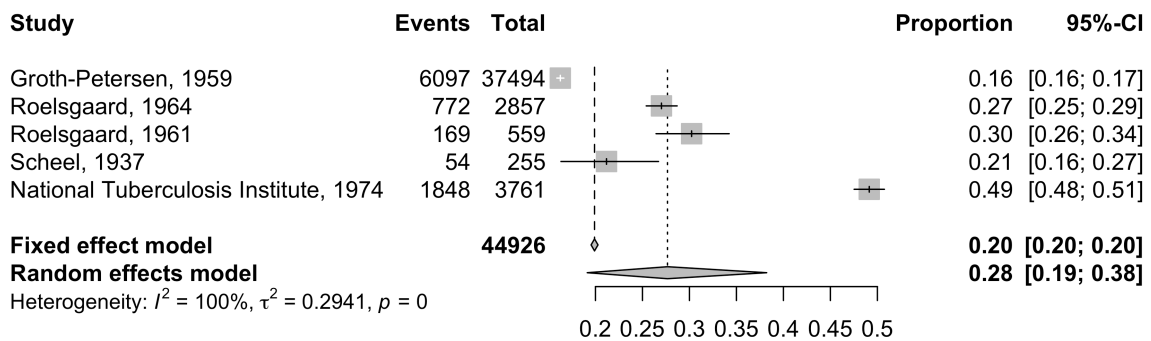


Figure 6 – Meta analysis on true minimal

The results of a meta-analysis on the proportion of those with positive x-rays who also test tst negative, as a proxy for the proportion of positive x-rays that are not caused by TB

To check this assumption, we have tested this with 0% and 40% of x-ray positives being non-TB, as can be seen in table 7.

S6 Disease pathways

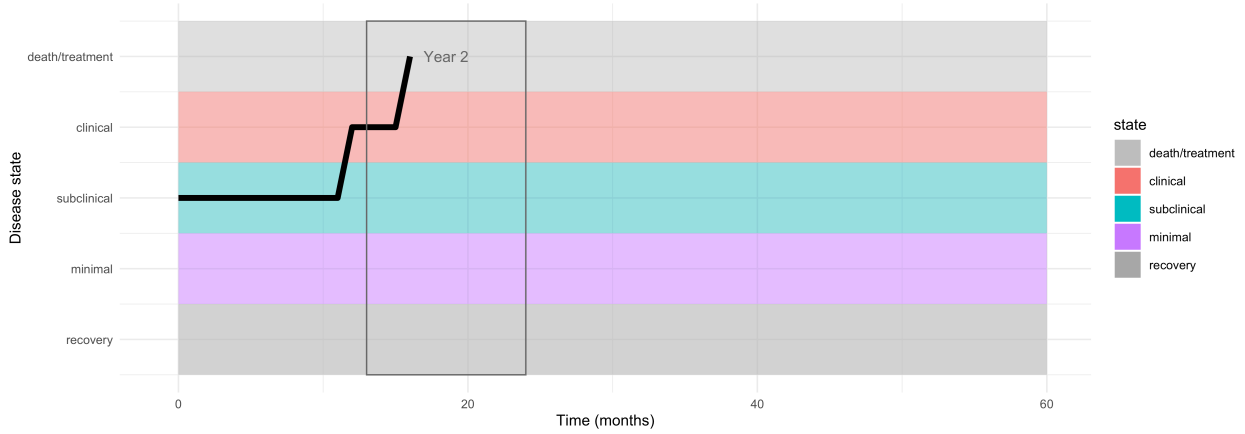


Figure 7 – Trajectories, TB death

An example trajectory where the individual dies from TB. In this case, the death happens in year 2

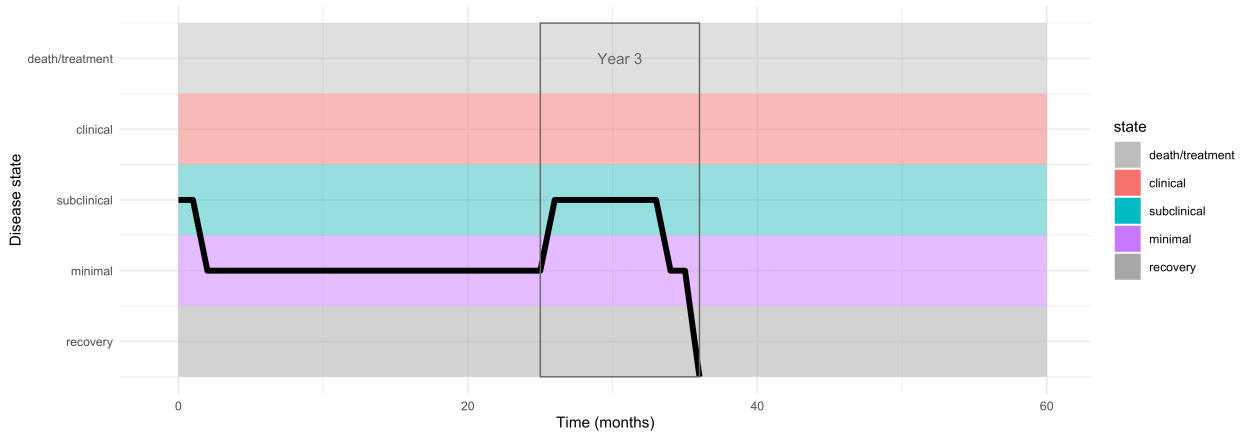


Figure 8 – Trajectories, TB recovery

An example trajectory where the individual recovers from TB. In this case, the individual spent the first 2 years having regressed to minimal, then progresses to subclinical in the third year before regressing quickly to recovery

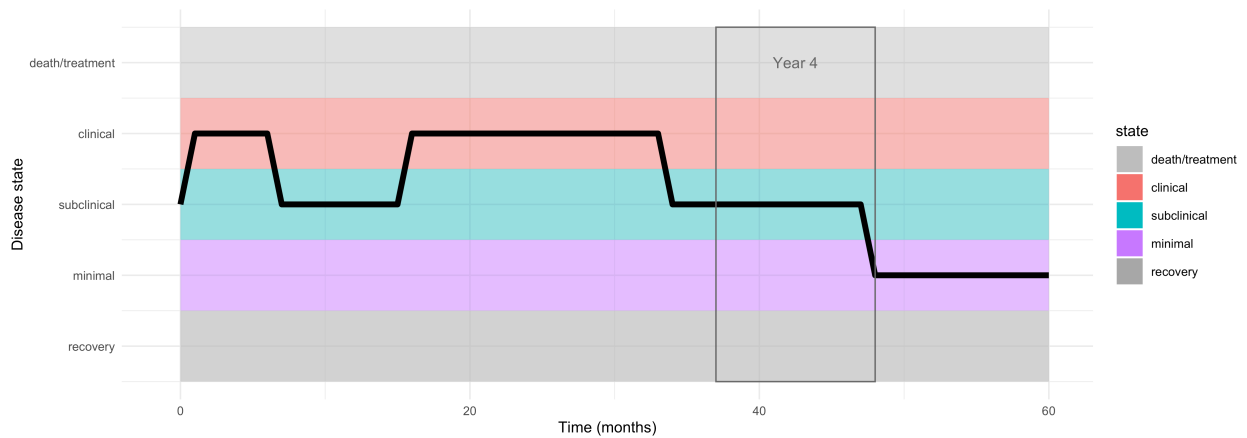


Figure 9 – Trajectories, subclinical

An example trajectory of subclinical in the 4th year. The previous years have time in both clinical and subclinical and year 5 is entirely in minimal, however, as the majority of time (≥ 9 months) in year 4 and there are fewer than three state changes, the 4th year is defined as subclinical

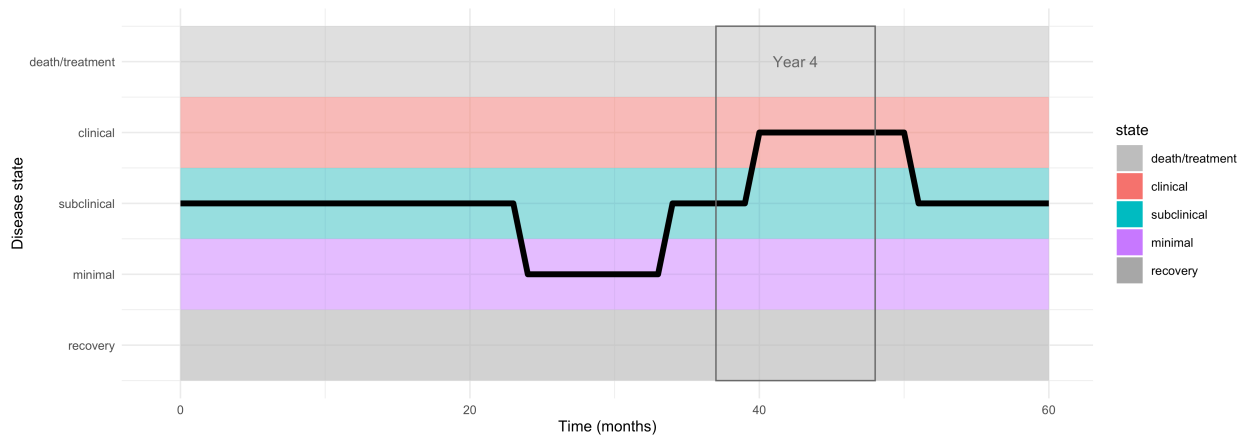


Figure 10 – Trajectories, clinical

An example trajectory of clinical in the 4th year. The previous years have time in both minimal and subclinical and year 5 is mainly subclinical. As the majority of time (≥ 9 months) in year 4 is clinical and there are fewer than three state changes, the 4th year is defined as clinical

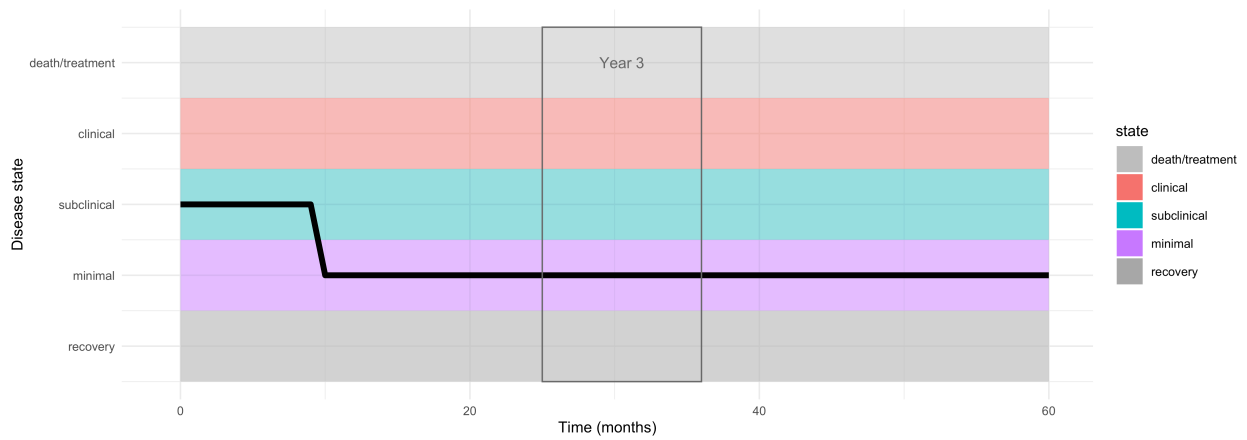


Figure 11 – Trajectories, minimal

An example trajectory of minimal in the 3rd year. Other than the first year, with time in subclinical, the remaining years are also all minimal

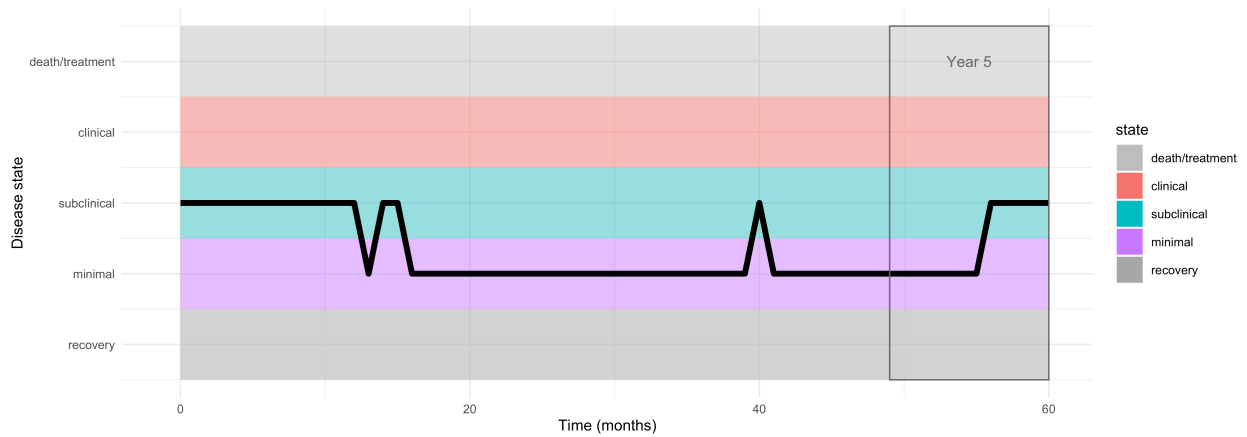


Figure 12 – Trajectories, undulating 1

An example trajectory of undulating disease in the 5th year. There are 2 disease states in the 5th year, with neither lasting for 9 months. The majority of the remainder of this trajectory is in minimal

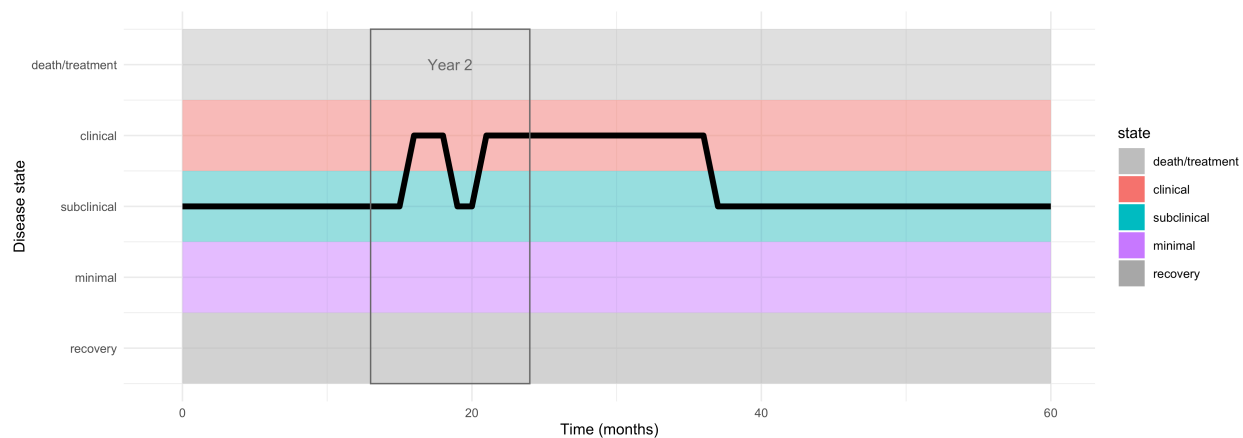
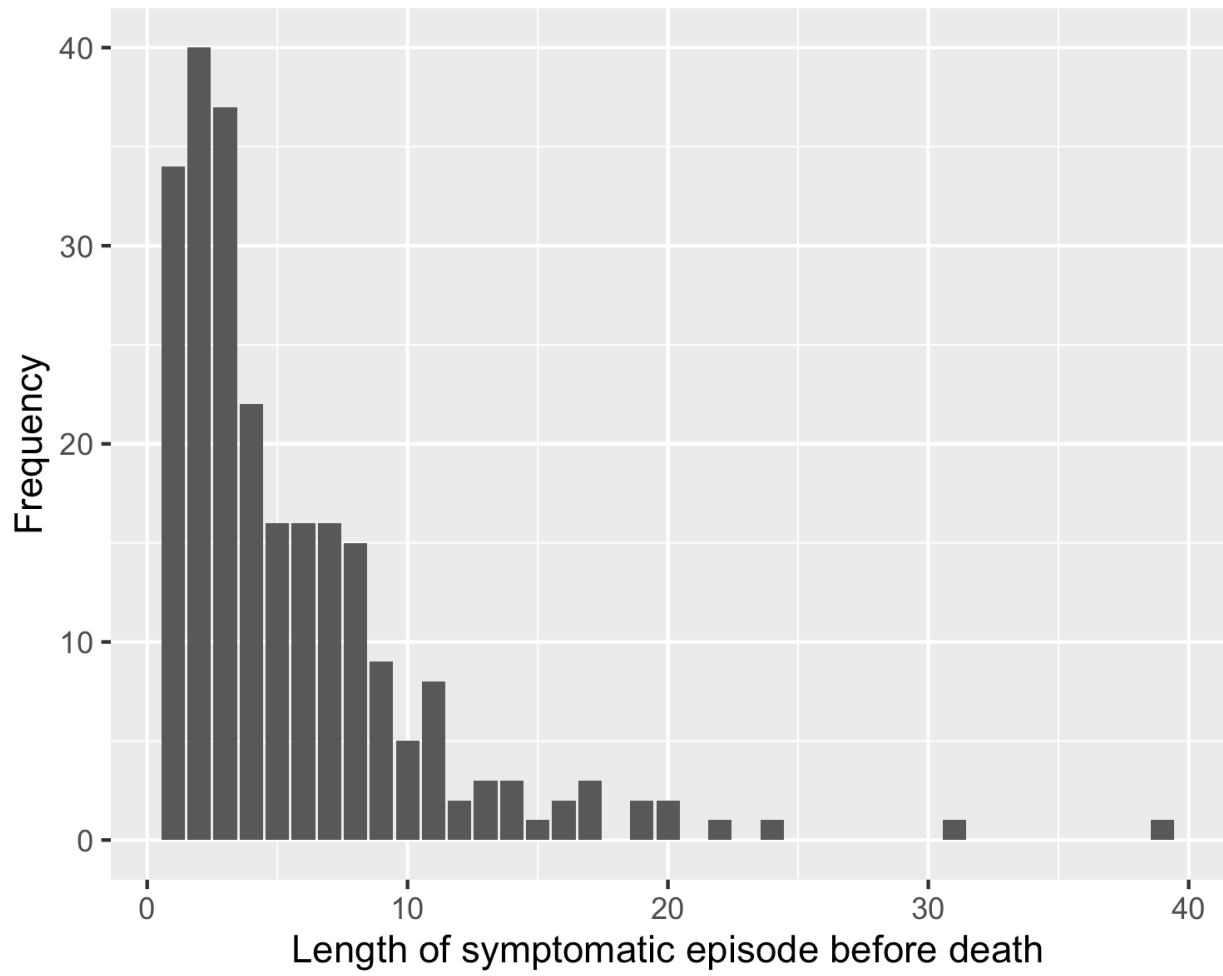


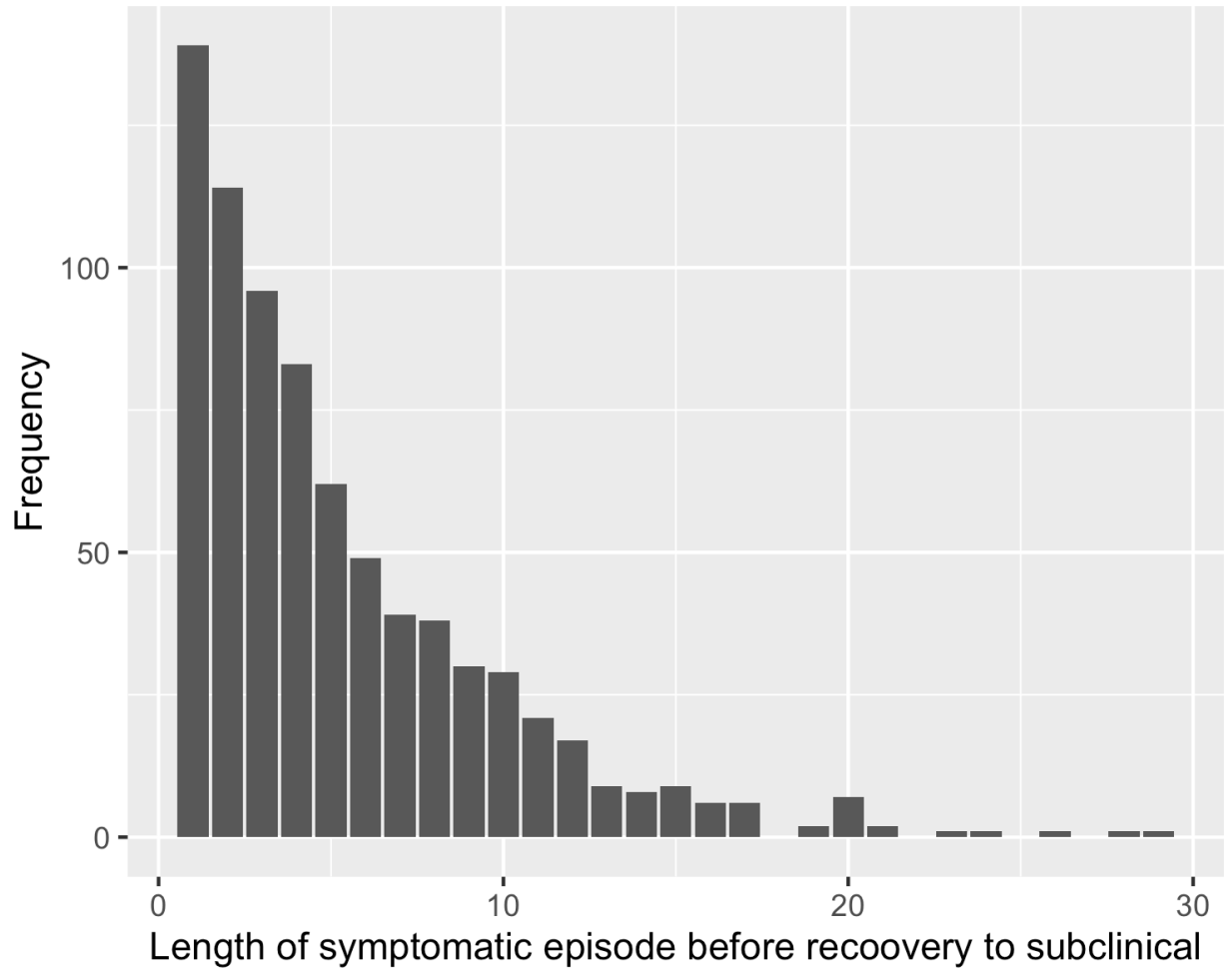
Figure 13 – Trajectories, undulating 2

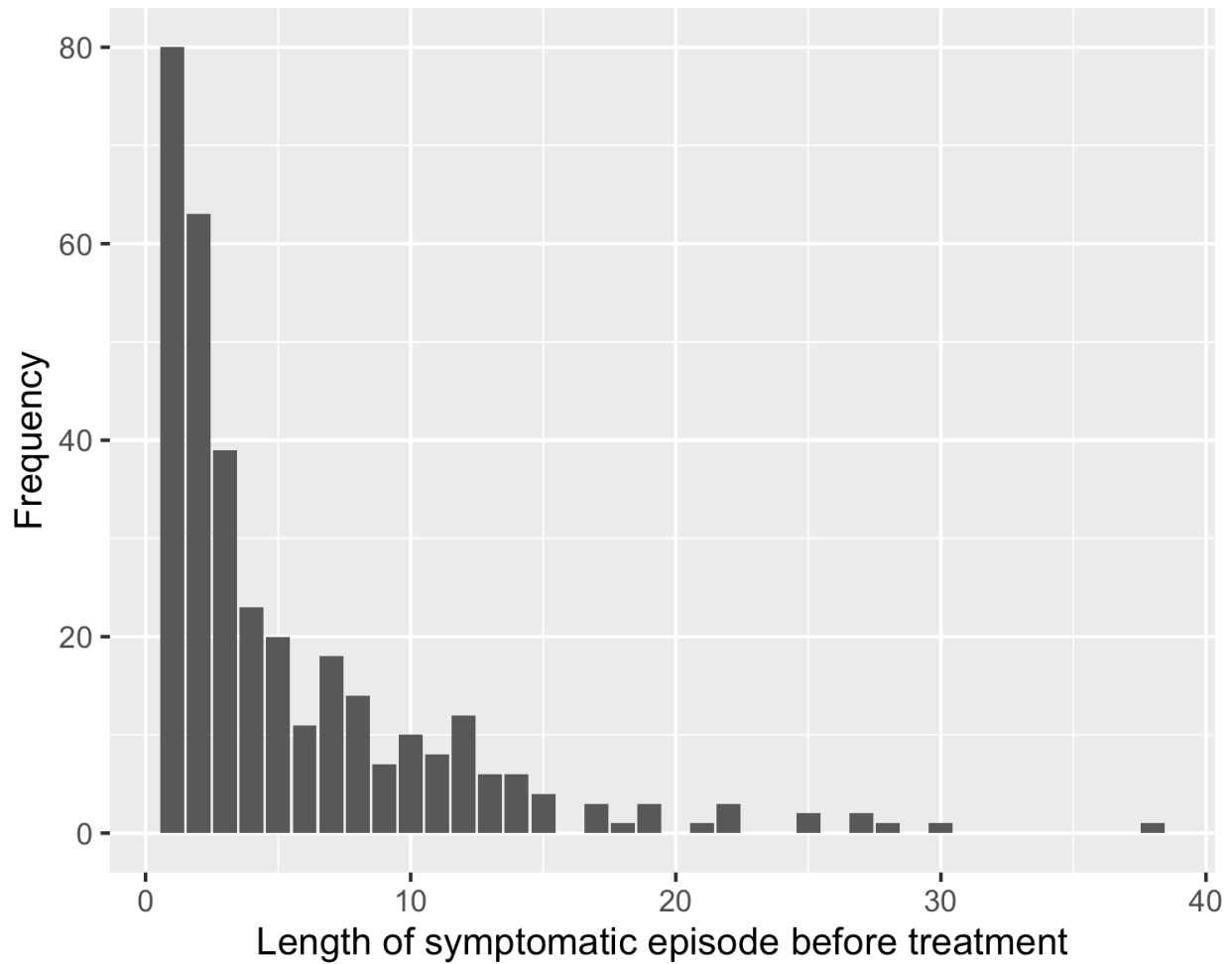
An example trajectory of undulating disease in the second year, with three state changes and neither state lasting for a total of 9 months.

S7 Duration of symptoms

Duration of symptoms can be split into three categories; duration before death, duration before regression to subclinical, and when applicable, duration before treatment. These three have not shown a significant difference in our analysis, but of note is the highly skewed distribution that we observe. Of those who become clinical, the minimum time spent clinical is one month (as that is the time step in the model), but a small proportion of individuals have persistent symptoms for a long time







S8 Additional results

Here we consider the median duration of disease and the proportion of people in each state at a given time. We can see that including treatment decreases the duration of disease and decreases the proportion clinical. When including minimal disease in the duration, we see that duration increases significantly, showing the importance of considering all those who are at risk of progressing to infectious disease. In the following figures, the top row is the number of people in all disease states (minimal, subclinical and clinical) over time, and the bottom row is the number of people in infectious disease states (subclinical and clinical).

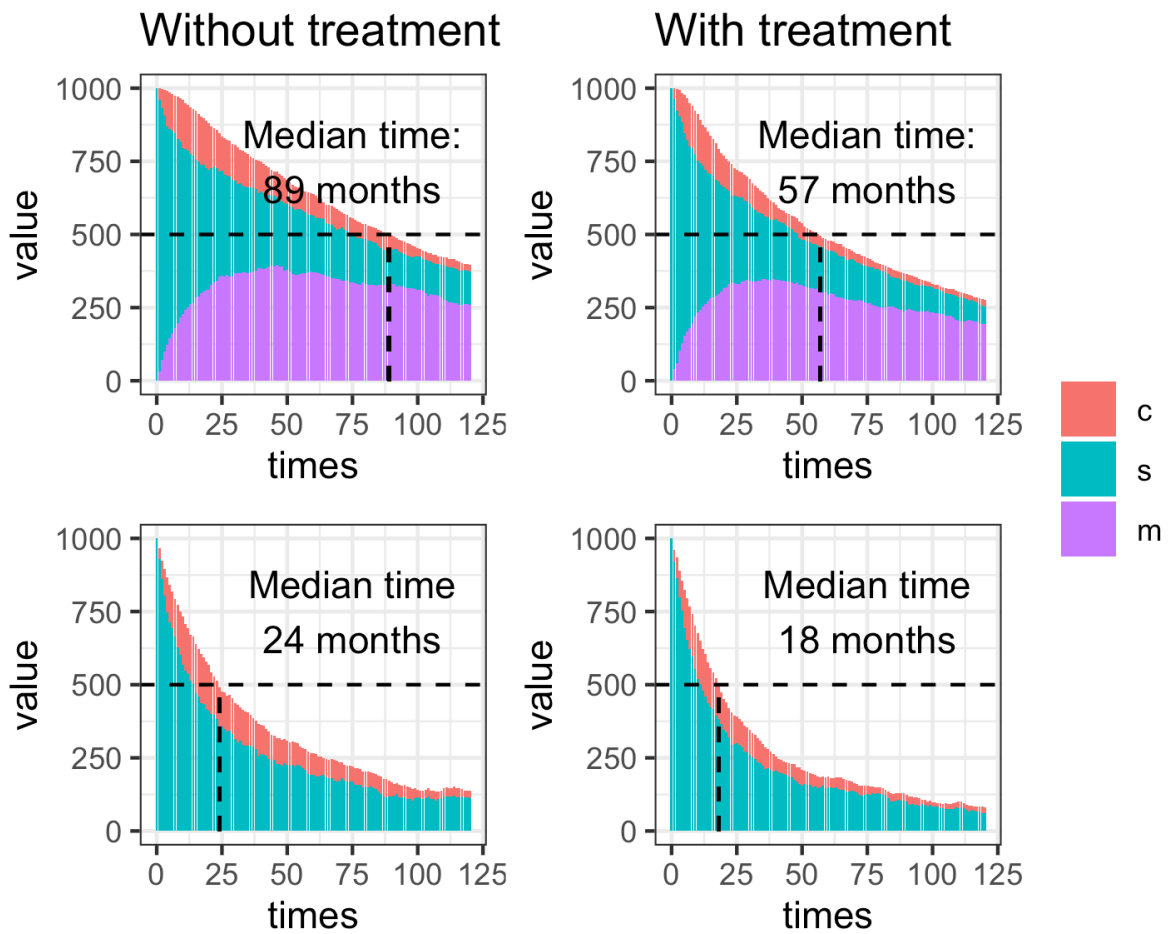


Figure 14 - Duration from subclinical disease

Median duration of infectious and all disease with and without treatment, starting with a cohort of subclinical individuals

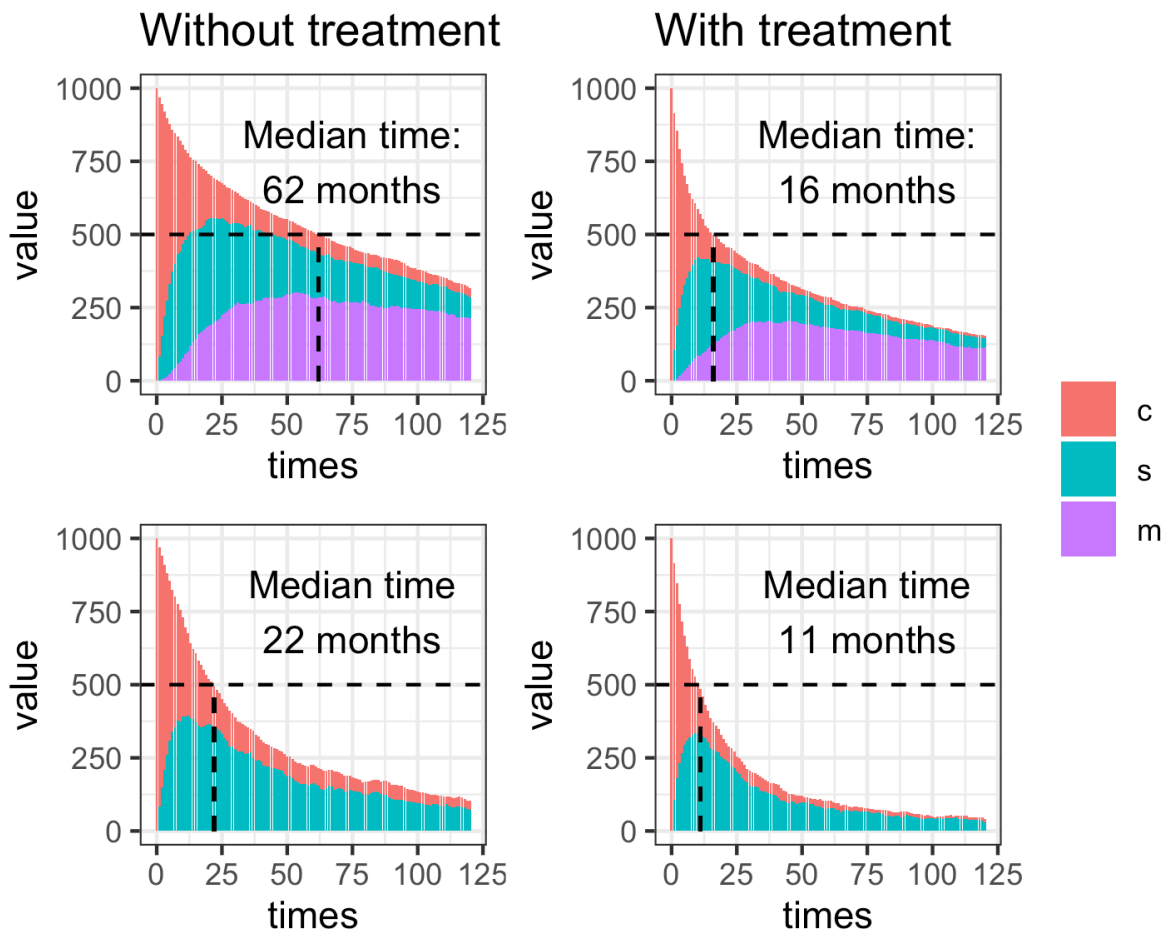


Figure 15 – Duration from clinical disease

Median duration of infectious and all disease with and without treatment, starting with a cohort of clinical individuals

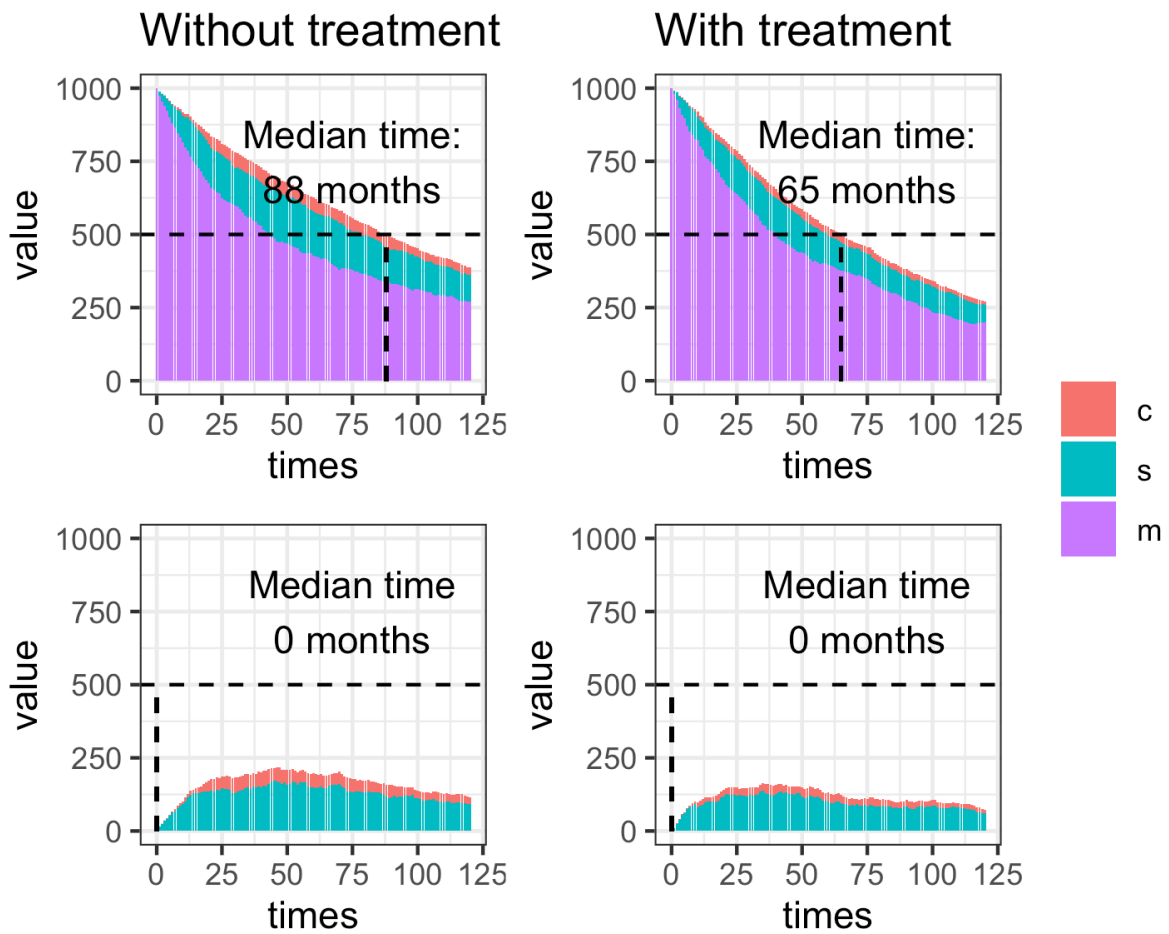


Figure 16 – Duration from minimal disease

Median duration of infectious and all disease with and without treatment, starting with a cohort of minimal individuals

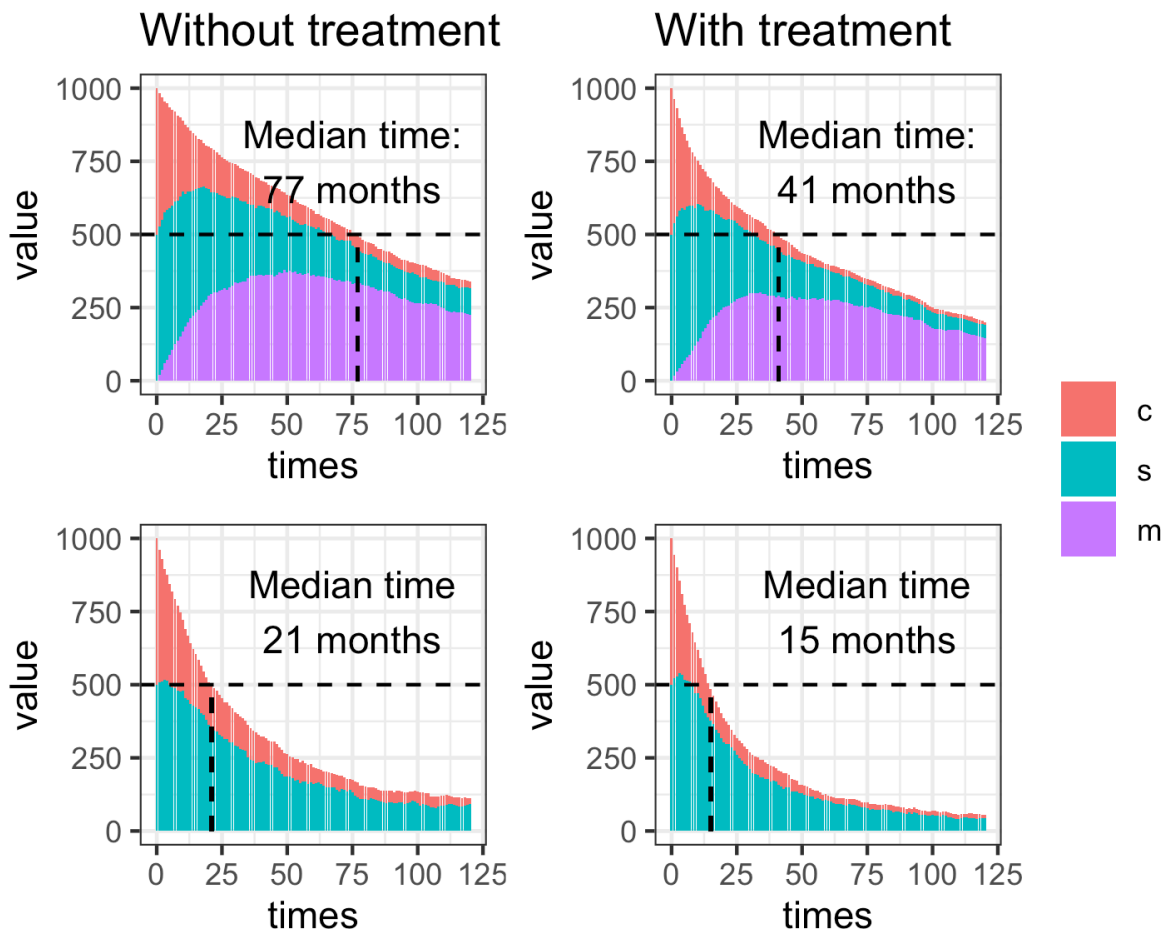


Figure 17 – Duration from clinical/subclinical even split
 Median duration of infectious and all disease with and without treatment, starting with a cohort of half clinical and half subclinical individuals

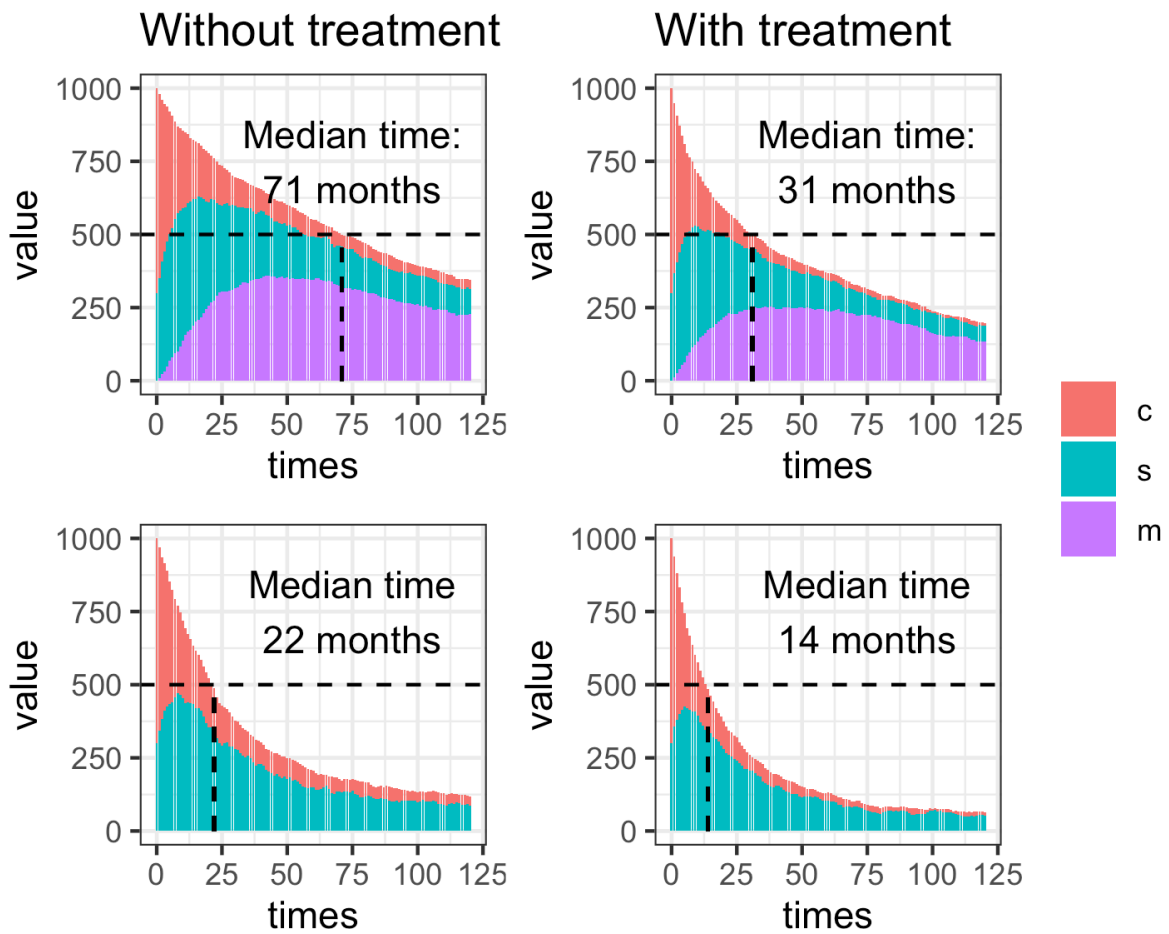


Figure 18 – Duration from clinical/subclinical 70/30 split

Median duration of infectious and all disease with and without treatment, starting with a cohort of 70% clinical and 30% subclinical individuals

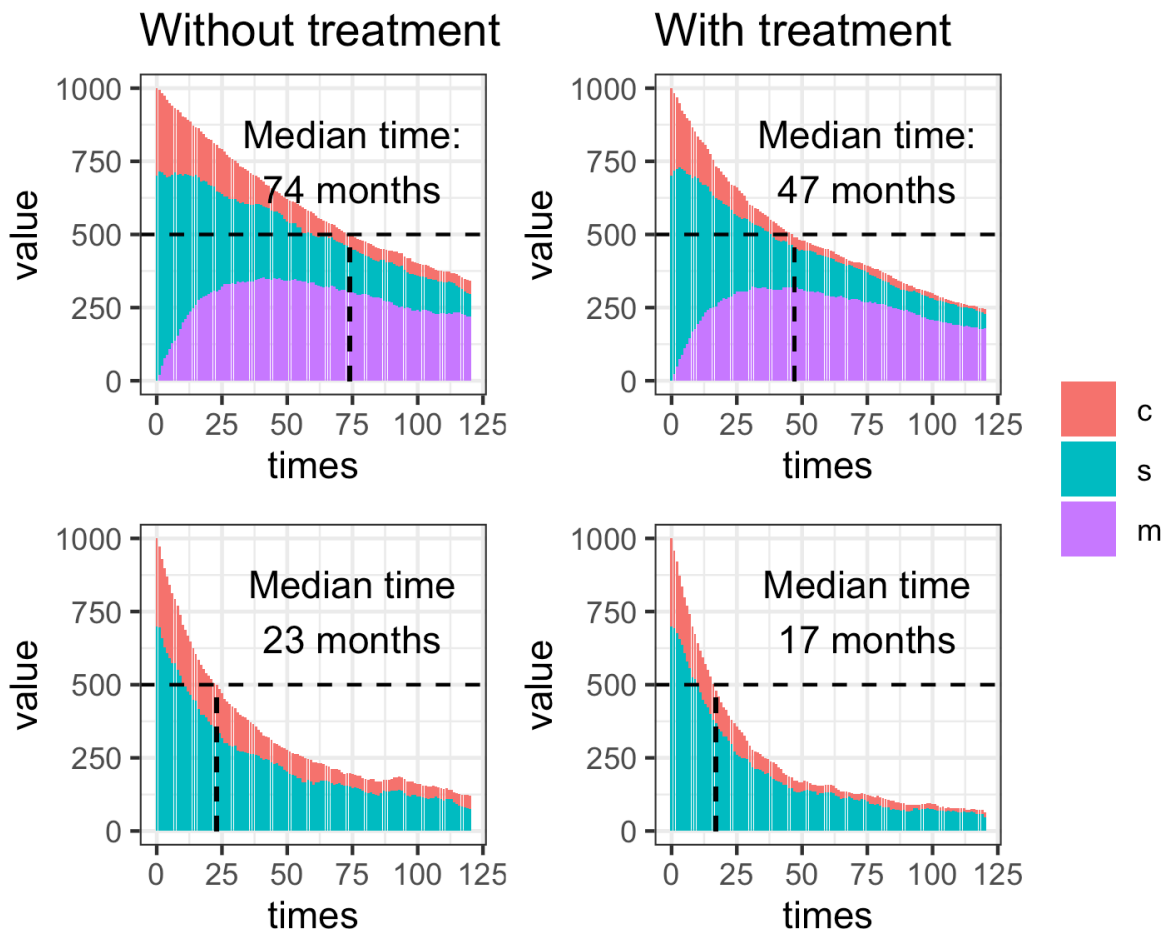


Figure 19 – Duration from clinical/subclinical 30/70 split

Median duration of infectious and all disease with and without treatment, starting with a cohort of 30% clinical and 70% subclinical individuals

S9 Sensitivity Analyses

We have run sensitivity analyses on different areas of the main analysis. For the purposes of comparison, we have included the median parameter estimates, and key outputs; median duration of disease, percentage of people clinical, undulating, subclinical, and minimal after 5 years, and the number of people who have died from TB over 10 years.

S9.1 Fitting

S9.1.1 Bootstrap studies

We ran the fit process removing the data from one study at a time. Table 4 shows the key outputs, showing that no one study is driving the fit, with similar results when each study is removed.

Table 4 – Sensitivities, bootstrapped*A summary of the differences in fit when removing one study at a time*

study	min-sub	sub-min	sub-clin	clin-sub	duration	clinical5	undulating5	subclinical5	minimal5	dead10	treated5	recovered5
Main	0.16	0.42	0.50	1.26	23	3.45	9.66	13.52	30.36	38.75	0	12.68
39-42	0.09	0.39	1.44	2.52	24	2.08	13.69	6.95	29.42	44.72	0	12.14
25,26	0.09	0.39	1.66	2.85	23	1.78	15.41	5.93	28.67	45.68	0	12.31
12	0.09	0.39	1.62	2.81	23	1.84	14.54	6.48	28.18	45.77	0	12.38
10	0.09	0.39	1.16	2.23	24	2.50	12.35	8.85	31.09	42.28	0	11.91
28-36	0.09	0.38	2.21	3.46	24	1.20	17.38	4.59	27.00	47.88	0	11.78
38	0.10	0.39	0.79	1.75	23	2.60	9.92	10.48	31.41	39.43	0	13.64
30	0.09	0.39	1.33	2.38	23	2.18	13.03	8.12	29.81	43.61	0	12.18
15	0.10	0.39	1.13	2.13	23	2.50	11.91	8.40	29.95	42.62	0	12.99
13,14	0.09	0.39	1.50	2.61	23	2.03	13.96	7.14	28.71	44.81	0	12.54
20,21	0.09	0.39	1.43	2.54	23	2.10	14.01	7.32	29.05	43.94	0	12.63
45	0.10	0.39	1.27	2.28	24	2.47	12.75	8.26	29.86	43.61	0	12.24
43	0.09	0.39	1.33	2.39	23	2.54	12.68	8.33	29.69	43.43	0	12.59
11	0.09	0.39	1.32	2.85	23	1.49	12.82	8.74	31.77	39.81	0	13.54
18	0.09	0.39	1.44	2.58	23	1.98	12.98	7.46	30.16	43.88	0	12.46
44	0.10	0.39	1.09	2.06	22	2.64	11.68	8.88	29.69	42.88	0	12.93
9	0.09	0.39	1.50	2.64	23	2.31	13.67	6.99	29.43	44.12	0	12.30
37	0.09	0.38	4.03	6.21	23	0.39	19.76	2.10	26.97	48.80	0	11.87
8	0.09	0.38	2.20	3.49	24	1.36	16.68	4.55	28.81	45.93	0	11.76
24	0.10	0.39	1.25	2.27	24	2.59	11.91	8.66	29.66	43.53	0	12.28
23	0.12	0.40	0.82	1.68	23	3.19	10.87	10.36	29.59	41.73	0	13.15
22	0.10	0.39	0.92	1.67	23	3.30	10.85	9.35	29.26	42.90	0	12.33
16,17	0.09	0.38	2.92	4.21	23	0.92	18.30	3.10	26.80	49.40	0	11.40
16,19	0.10	0.39	1.39	2.50	23	2.29	12.80	7.33	29.68	43.67	0	13.42

27 0.09 0.39 1.32 2.38 24 2.38 12.60 8.19 29.38 44.24 0 12.33

S9.1.2 Change recovery

We ran the fit, with all available data, but changing the fixed value of recovery per year from minimal. As highlighted in section 1.5.2, Figure 5, we have tested both 0.05 and 0.15, 0.05 above and below the fixed value of 0.1 used in the main analysis. Table

Table 5 – Sensitivities, recovery from minimal

A summary of the differences in fit when varying the rate of recovery from minimal

recovery	min-sub	sub-min	sub-clin	clin-sub	duration	clinical5	undulating5	subclinical5	minimal5	dead10	treated5	recovered5
Main	0.16	0.42	0.50	1.26	23	3.45	9.66	13.52	30.36	38.75	0	12.68
0.05	0.08	0.38	1.69	2.60	23	1.73	16.06	5.18	32.55	48.01	0	6.70
0.15	0.11	0.39	1.31	2.58	23	1.99	12.96	8.69	25.16	41.58	0	18.09
0	0.08	0.38	1.19	1.69	23	3.74	11.38	7.58	38.36	49.26	0	0.00

S9.1.3 Change duration of infectiousness

The duration of infectiousness holds a fixed value of 2 years in the main analysis. In table 6 we change this fixed value to 18 months and 3 years.

Table 6 – Sensitivities, duration of infectiousness

A summary of the differences in fit when testing different durations of infectiousness

duration	min-sub	sub-min	sub-clin	clin-sub	duration	clinical5	undulating5	subclinical5	minimal5	dead10	treated5	recovered5
Main	0.16	0.42	0.50	1.26	23	3.45	9.66	13.52	30.36	38.75	0	12.68
18 months	0.11	0.63	1.20	1.33	17	3.61	7.94	4.45	31.60	46.00	0	13.82
3 years	0.09	0.23	1.18	4.45	34	0.57	15.85	18.39	27.03	37.14	0	10.80

S9.1.4 Change proportion of minimal “true minimal”

Table 7 – Sensitivities, proportion of true minimal

A summary of the differences in fit when changing the proportion of people that have x-ray changes due to TB disease

prop_min	min-sub	sub-min	sub-clin	clin-sub	duration	clinical5	undulating5	subclinical5	minimal5	dead10	treated5	recovered5
----------	---------	---------	----------	----------	----------	-----------	-------------	--------------	----------	--------	----------	------------

Main	0.16	0.42	0.50	1.26	23	3.45	9.66	13.52	30.36	38.75	0	12.68
100%	0.07	0.38	1.44	2.53	24	2.13	13.26	6.90	35.98	43.62	0	6.91
60%	0.07	0.38	1.48	2.59	24	2.18	12.57	7.07	26.21	42.16	0	17.74

S9.1.5 Change assumption on persistent symptoms

The studies where there was only information about the symptom state at the start, in the main analysis, we have assumed this symptom state persists. These data were from minimal to either subclinical or clinical, and so for this sensitivity, we have changed them all to minimal to infectious. The results are in table 8.

Table 8 – Sensitivities, unreported symptoms

A summary of the difference in fit, and the subsequent analyses, when removing the assumption that symptoms persist

symptoms assumption	min-sub	sub-min	sub-clin	clin-sub	duration	clinical5	undulating5	subclinical5	minimal5	dead10	treated5	recovered5
Main	0.16	0.42	0.50	1.26	23	3.45	9.66	13.52	30.36	38.75	0	12.68
no	0.10	0.39	0.77	1.70	23	3.00	10.06	11.15	31.74	38.38	0	13.08

S9.2 Cohort model

S9.2.1 Parameter values

The method of parameter choice for the simulation was one of three. In the main analysis, each step of the model, for each individual, the relevant parameters were chosen randomly from the posterior distribution. For the other two alternatives, we randomly sampled the parameters at the start of the simulation for each individual and fixed them for the whole run, and the other used the median parameters for each person. Table 9 shows that there is very little difference between either method overall.

Table 9 – Sensitivities, parameter choice in analysis

A summary of the differences in analysis when testing different method of parameter choice for the cohort model

method	min-sub	sub-min	sub-clin	clin-sub	duration	clinical5	undulating5	subclinical5	minimal5	dead10	treated5	recovered5
Main	0.16	0.42	0.5	1.26	23	3.45	9.66	13.52	30.36	38.75	0	12.68
fixed	0.16	0.42	0.5	1.26	23	2.93	9.70	13.62	30.30	38.47	0	12.76
median	0.16	0.42	0.5	1.26	23	3.30	9.68	14.31	29.97	38.26	0	13.11

S9.2.2 Treatment

Treatment was added to the model to simulate a case detection rate for a care pathway initiated by self reported symptoms. When considered in the main analysis, the case detection rate was implemented at 70%. In table 10 we compare the difference between case detection rates at 50%, 70%, and 90%.

Table 10 – Sensitivities, effect of treatment

A summary of the differences in analysis when testing different passive case detection rates

treatment	min-sub	sub-min	sub-clin	clin-sub	duration	clinical5	undulating5	subclinical5	minimal5	dead10	treated5	recovered5
Main	0.16	0.42	0.5	1.26	23	3.45	9.66	13.52	30.36	38.75	0.00	12.68
0.5	0.16	0.42	0.5	1.26	17	1.28	6.32	9.28	25.39	25.97	24.66	11.34
0.7	0.16	0.42	0.5	1.26	15	0.88	5.65	8.17	23.95	22.60	31.11	10.74
0.9	0.16	0.42	0.5	1.26	13	0.65	5.00	7.73	22.24	20.64	36.10	10.24

S9.2.3 Trajectories

The trajectories are based on two variables, the proportion of time in a single state, and the number of state changes both over the previous 12 months. The main analysis defines undulating as less than nine months in a single state or 3 or more changes in state. In table 11 we compare the definition of undulation as less than 8 months or less than 10 months, whilst keeping the number of state changes fixed at 3 or more. In table 12 we compare the definition of undulation with less than 9 months fixed, and the state changes as either 2 or more, or 4 or more.

Table 11 – Sensitivities, undulation definition, months

A summary of the differences in analysis when varying the threshold for undulating trajectories

states	min-sub	sub-min	sub-clin	clin-sub	duration	clinical5	undulating5	subclinical5	minimal5	dead10	treated5	recovered5
Main	0.16	0.42	0.5	1.26	23	3.45	9.66	13.52	30.36	38.75	0	12.68
7	0.16	0.42	0.5	1.26	23	5.01	3.09	16.26	32.13	38.52	0	13.68
8	0.16	0.42	0.5	1.26	23	4.10	6.68	15.39	30.71	38.08	0	13.13
10	0.16	0.42	0.5	1.26	24	2.50	13.40	11.69	29.74	37.47	0	13.07
11	0.16	0.42	0.5	1.26	22	1.92	15.81	9.76	28.08	38.46	0	13.63

Table 12 – Sensitivities, undulation definition, state changes

A summary of the differences in analysis when varying the threshold for undulating trajectories

changes	min-sub	sub-min	sub-clin	clin-sub	duration	clinical5	undulating5	subclinical5	minimal5	dead10	treated5	recovered5
Main	0.16	0.42	0.5	1.26	23	3.45	9.66	13.52	30.36	38.75	0	12.68
2	0.16	0.42	0.5	1.26	23	2.80	12.56	11.58	29.62	38.19	0	13.39
4	0.16	0.42	0.5	1.26	24	2.82	10.14	13.58	30.96	37.77	0	12.54

References

- 1 Tiemersma EW, Werf MJ van der, Borgdorff MW, Williams BG, Nagelkerke NJD. Natural history of tuberculosis: Duration and fatality of untreated pulmonary tuberculosis in HIV negative patients: A systematic review. *PLoS ONE* 2011; **6**: e17601.
- 2 Ragonnet R, Flegg JA, Brilleman SL, Tiemersma EW, Melsew YA, McBryde ES *et al*. Revisiting the natural history of pulmonary tuberculosis: A bayesian estimation of natural recovery and mortality rates. *Clin Infect Dis* 2020. doi:[10.1093/cid/ciaa602](https://doi.org/10.1093/cid/ciaa602).
- 3 Szucs E. Sputum examination in so-called closed tuberculosis. *JAMA* 1926; **86**: 946.
- 4 Tattersall WH. The survival of sputum-positive consumptives: A study of 1,192 cases in a county borough between 1914 and 1940. *Tubercle* 1947; **28**: 85–96.
- 5 Lindhardt M. *The statistics of pulmonary tuberculosis in denmark, 1925-1934; a statistical investigation on the occurrence of pulmonary tuberculosis in the period 1925-1934, worked out on the basis of the danish national health service file of notified cases and of deaths*. EMunksgaard: Copenhagen, 1939.
- 6 Blahd M, Leslie EI, Rosenthal SR. Infectiousness of the ‘closed case’ in tuberculosis. *Am J Public Health Nations Health* 1946; **36**: 723–726.
- 7 Association NT. *Diagnostic standards and classification of tuberculosis*. 1940 ed. New York, N.Y., 1940<http://hdl.handle.net/2027/coo.31924089435949>.
- 8 Okada K, Onozaki I, Yamada N, Yoshiyama T, Miura T, Saint S *et al*. Epidemiological impact of mass tuberculosis screening: A 2 year follow-up after a national prevalence survey. 2012; **NA**.
- 9 Downes J. The study of mortality among individuals with active pulmonary tuberculosis. 1938; **16**: 304–317.
- 10 Beeuwkes H, Hahn RG, Putnam P. A survey of persons exposed to tuberculosis in the household. *Am Rev Tuberc* 1942; **45**: 165–193.
- 11 Puffer RR, Stewart HC, Gass RS. Tuberculosis according to age, sex, family history, and contact. *Am Rev Tuberc* 1945; **51**: 295–311.
- 12 Puelma HO, Grebe G. Analysis of one hundred cases of minimal pulmonary tuberculosis. *Dis Chest* 1945; **11**: 375–379.
- 13 BOBROWITZ ID., HURST A., MARTIN M. Minimal tuberculosis; the prognosis and clinical significance of a sanatorium treated group. *American review of tuberculosis* 1947; **56**: 110–125.
- 14 BOBROWITZ ID., HURST A. Minimal tuberculosis; problems in roentgenologic interpretation. *Radiology* 1949; **52**: 519–32.

- 15 Childress WG. Clinical evaluation, treatment, and follow-up of newly acquired tuberculous lesions. *New York State Journal of Medicine* 1947; **47**: 2560–4.
- 16 Bosworth E.B., Alling D.W. The after-history of pulmonary tuberculosis. I. Methods of evaluation. *American Review of Tuberculosis* 1954; **69**: 37–49.
- 17 Lincoln NS, Bosworth EB, Alling DW. The after-history of pulmonary tuberculosis. III. Minimal tuberculosis. *Am Rev Tuberc* 1954; **70**: 15–31.
- 18 Streptomycin treatment of pulmonary tuberculosis: A medical research council investigation. *BMJ* 1948; **2**: 769–782.
- 19 Alling D.W., Bosworth E.B., Lincoln N.S. The after-history of pulmonary tuberculosis. V. Moderately advanced tuberculosis. *American Review of Tuberculosis* 1955; **71**: 519–528.
- 20 Borgen L., Meyer SN., Refsum E. Mass photofluorography, tuberculin testing, and BCG vaccination in the district of aker (norway) 1947-49. *Acta tuberculosea Scandinavica* 1951; **25**: 327–55.
- 21 Refsum E. Mass investigation by photofluorography; an illustration of the value of the method in combating tuberculosis. *Acta tuberculosea Scandinavica* 1952; **27**: 288–302.
- 22 Manser H. [Tuberculosis in aged and its course during sanatorium treatment]. *Schweizerische Zeitschrift fur Tuberkulose Revue suisse de la tuberculose Rivista svizzera della tubercolosi* 1953; **10**: 65–82.
- 23 K. B. [Public health x-ray diagnosis of closed pulmonary tuberculosis later proved contagious]. *Beitrage zur Klinik der Tuberkulose und spezifischen Tuberkulose-Forschung* 1954; **111**: 437–44.
- 24 Sikand BK, Narain R, Mathur GP. Incidence of TB as judged by re-surveys. A study of delhi police. *Indian Journal of Tuberculosis* 1959; **6**: 73–83.
- 25 Tuberculosis Society of Scotland. A controlled trial of chemotherapy in pulmonary tuberculosis of doubtful activity. Report from the research committee of the tuberculosis society of scotland. *Tubercle* 1958; **39**: 129–137.
- 26 Society ST. A controlled trial of chemotherapy in pulmonary tuberculosis of doubtful activity. *Tubercle* 1963; **44**: 39–46.
- 27 Frimodt-Moller J. Results of treatment of non-bacillary tuberculosis in a domiciliary treatment programme, preliminary report. Proceedings of the 20th tuberculosis and chest diseases workers' conference. 1965, p 133.
- 28 National Tuberculosis Institute B. Tuberculosis in a rural population of south india: A five-year epidemiological study. *Bull World Health Organ* 1974; **51**: 473–88.
- 29 Chakraborty AK, Singh H, Srikantan K, Rangaswamy KR, Krishnamurthy MS, Stephen JA. Tuberculosis in a rural population of south india: Report on five surveys. *Indian Journal of Tuberculosis* 1982; **29**: 153–167.

- 30 Gothi GD, Chakraborty AK, Krishnamurthy VV, Banerjee GC. Prevalence and incidence of sputum negative active pulmonary tuberculosis and fate of pulmonary radiological abnormalities found in rural population. *Indian Journal of Tuberculosis* 1978; **25**: 122–131.
- 31 Krishnamurthy VV, Nair SS, Gothi GD. A comparison of new cases (incidence cases) who had come from different epidemiological groups in the population. *Indian Journal of Tuberculosis* 1978; **25**: 144–146.
- 32 Gothi GD, Chakraborty AK, Jayalakshmi MJ. Incidence of sputum positive tuberculosis in different epidemiological groups during five year follow up of a rural population in south india. *Indian Journal of Tuberculosis* 1978; **25**: 83–91.
- 33 Krishnamurthy VV, Nair SS, Gothi GD, Chakraborty AK. Incidence of tuberculosis among newly infected population and in relation to the duration of infected status. *Indian Journal of Tuberculosis* 1976; **23**.
- 34 Gothi GD, Nair SS, Chakraborty AK, Ganapathy KT. Five year incidence of tuberculosis and crude mortality in relation to non-specific tuberculin sensitivity. *Indian Journal of Tuberculosis* 1976; **23**.
- 35 Chakraborty AK, Gothi GD. Relapses among naturally cured cases of pulmonary tuberculosis. *Indian Journal of Tuberculosis* 1976; **23**: 8–13.
- 36 Gothi GD, Chakraborty AK, Banerjee GC. Interpretation of photofluorograms of active pulmonary tuberculosis patients found in epidemiological survey and their five year fate. *Indian Journal of Tuberculosis* 1974; **11**: 90–97.
- 37 Pamra SP, Mathur GP. Effects of chemoprophylaxis on minimal pulmonary tuberculosis lesions of doubtful activity. *Bull World Health Organ* 1971; **45**: 593–602.
- 38 Aneja KS, Gothi GD, Samuel GER. Controlled study of the effect of specific treatment on bacteriological status of 'suspect cases'. *Indian J Tuberc* 1979; **26**: 50–57.
- 39 Hong Kong Chest Service/Tuberculosis Research Centre MMRC. A controlled trial of 2-month, 3-month, and 12-month regimens of chemotherapy for sputum smear-negative pulmonary tuberculosis: The results at 30 months. *Am Rev Respir Dis* 1981; **124**: 138–142.
- 40 Hong Kong Chest Service/Tuberculosis Research Centre MMRC. A controlled trial of 2-month, 3-month, and 12-month regimens of chemotherapy for sputum-smear-negative pulmonary tuberculosis. *Am Rev Respir Dis* 1984; **130**: 23–28.
- 41 Hong Kong Chest Service/Tuberculosis Research Centre MMRC. Sputum smear negative pulmonary tuberculosis controlled trial of 3-month and 2-month regimen of chemotherapy: First report. *The Lancet* 1979; **313**: 1361–1363.
- 42 Hong Kong Chest Service/Tuberculosis Research Centre MMRC. A study of the characteristics and course of sputum smear-negative pulmonary tuberculosis. *Tubercle* 1981; **62**: 155–167.

- 43 Cowie RL. Diagnosis of sputum smear- and sputum culture-negative pulmonary tuberculosis. *SAMJ* 1985; **68**: 878.
- 44 Anastasatu C, Berceea O, Corlan E. Controlled clinical trial on smear negative, x-ray positive new cases, with the view to establishing if and how to treat them. *Bull Int Union Tub* 1985; **60**: 108–109.
- 45 Norregaard J. Abacillary pulmonary tuberculosis. *Tubercle* 1990; **71**: 35–38.
- 46 Madsen T. Studies on the epidemiology of tuberculosis in denmark. *Acta Tuberculosea Scand (suppl)* 1942; **Supp 6**: 1–176.
- 47 Efficacy of various durations of isoniazid preventive therapy for tuberculosis: Five years of follow-up in the IUAT trial. *Bulletin of the World Health Organization* 1982; **60**: 555–564.
- 48 GROTH-PETERSEN E., KNUDSEN J., WILBEK E. Epidemiological basis of tuberculosis eradication in an advanced country. *Bulletin of the World Health Organization* 1959; **21**: 5–49.
- 49 Groth-Petersen E, Østergaard F. Mass chemoprophylaxis of tuberculosis. The acceptability and untoward side effects of isoniazid in a control study in greenland. *Am Rev Respir Dis* 1960; **81**: 643–652.
- 50 Styblo K, Dajkova D, Kubik A, Langerova M, Radkovsky J. Epidemiological and clinical study of tuberculosis in the district of kolin, czechoslovakia. ; : 56.
- 51 Rubinshteyn GR, Kochnova IE. Pulmonary tuberculosis: Inital stage and development in adults. *Acta Med,URSS* 1940; **3**: 250–265.