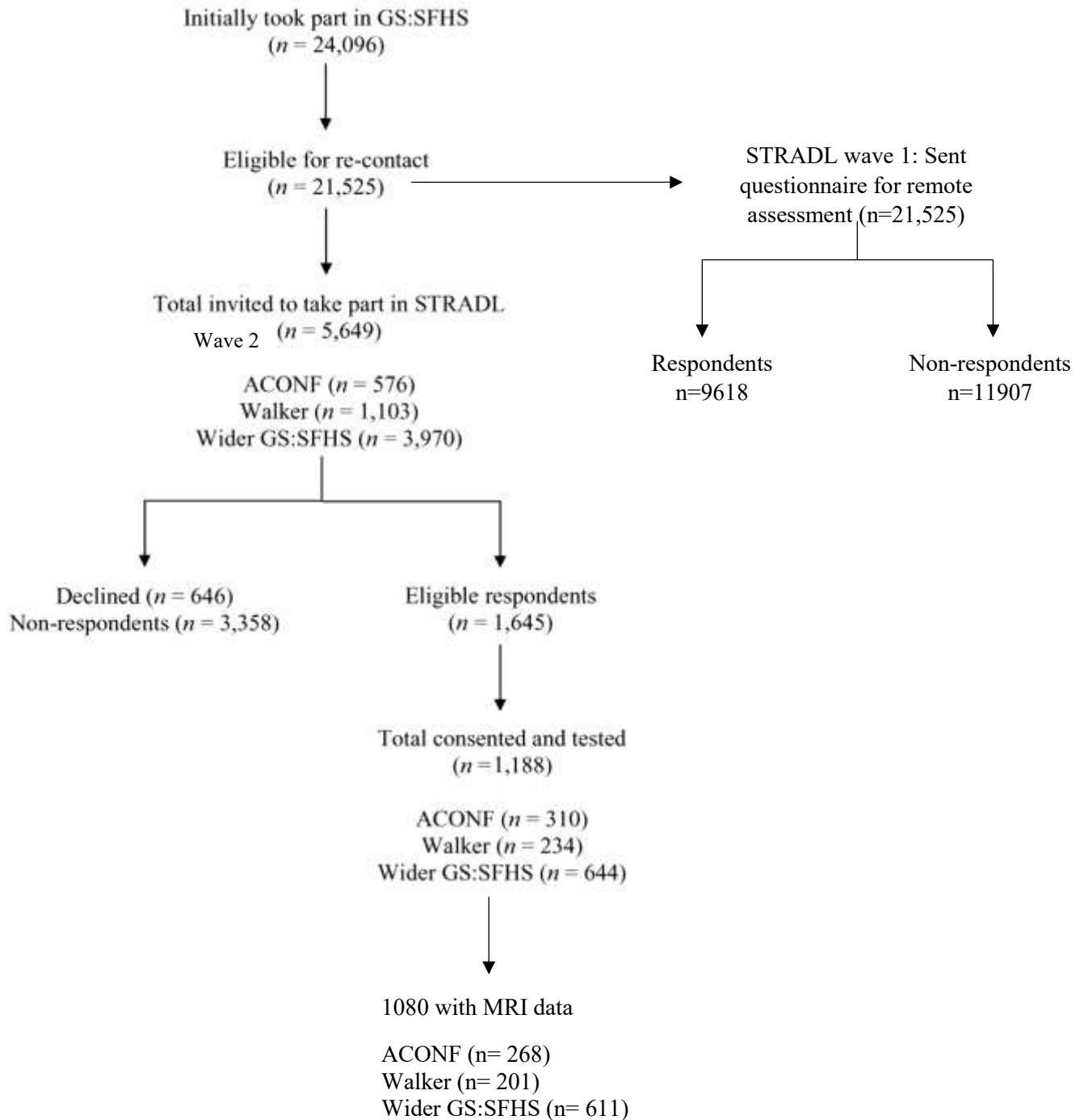


Supplementary materials

Supplementary figure 1: Recruitment flow chart of STRADL (A), the Dutch Famine Birth Cohort (B), LBC 1936 (C) and the Simpson's cohort (D).

A. STRADL

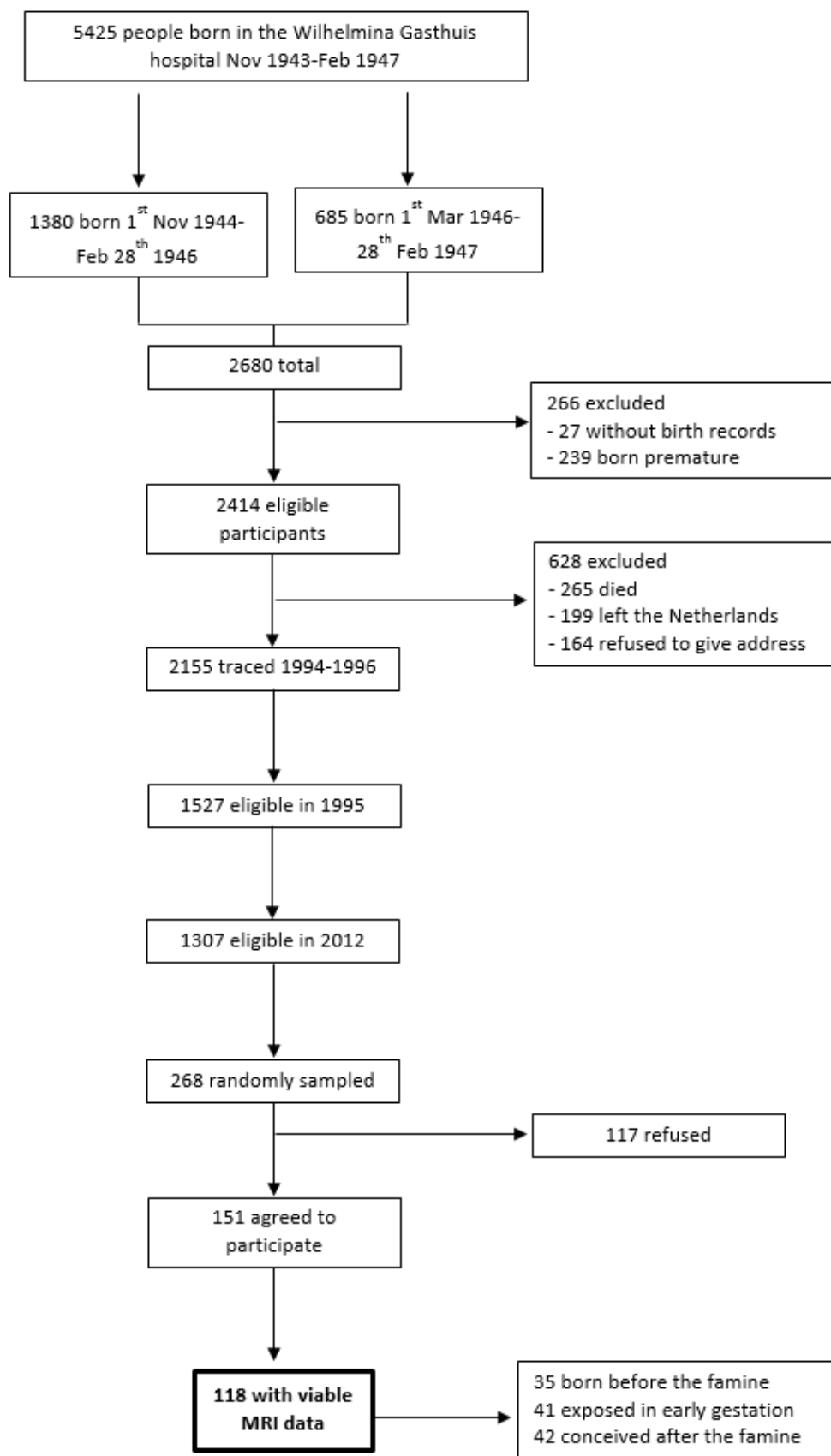


GS:SFHS= Generation Scotland: Scottish Fam

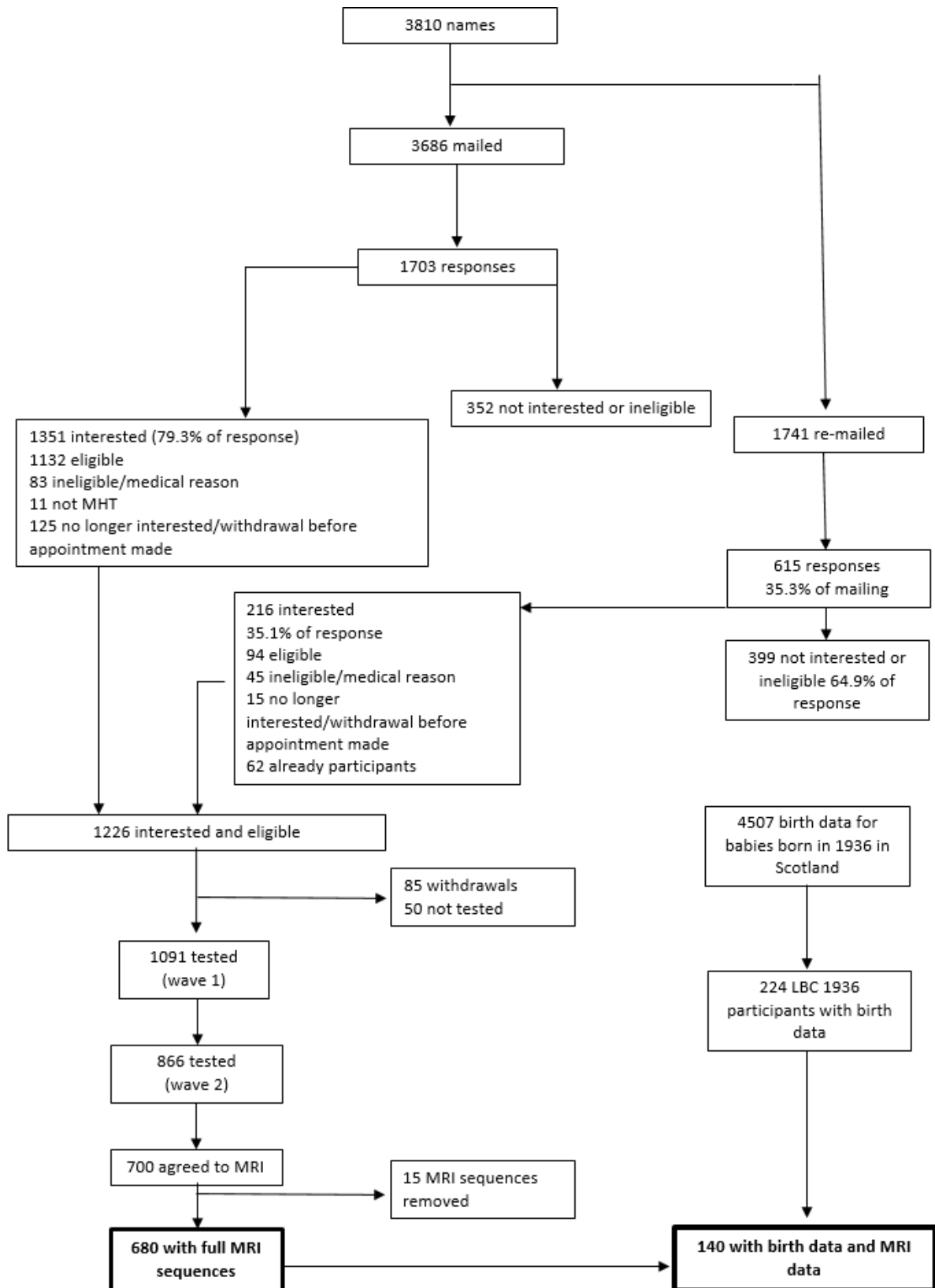
ACONF= Aberdeen Children of the 1950's cohort.

Adapted from: Habota T, Sandu AL, Waiter GD et al. Cohort profile for the STRatifying Resilience and Depression Longitudinally (STRADL) study: A depression-focused investigation of Generation Scotland, using detailed clinical, cognitive, and neuroimaging assessments [version 1]. Wellcome Open Res 2019, 4:185 (doi: 10.12688/wellcomeopenres.15538.1)

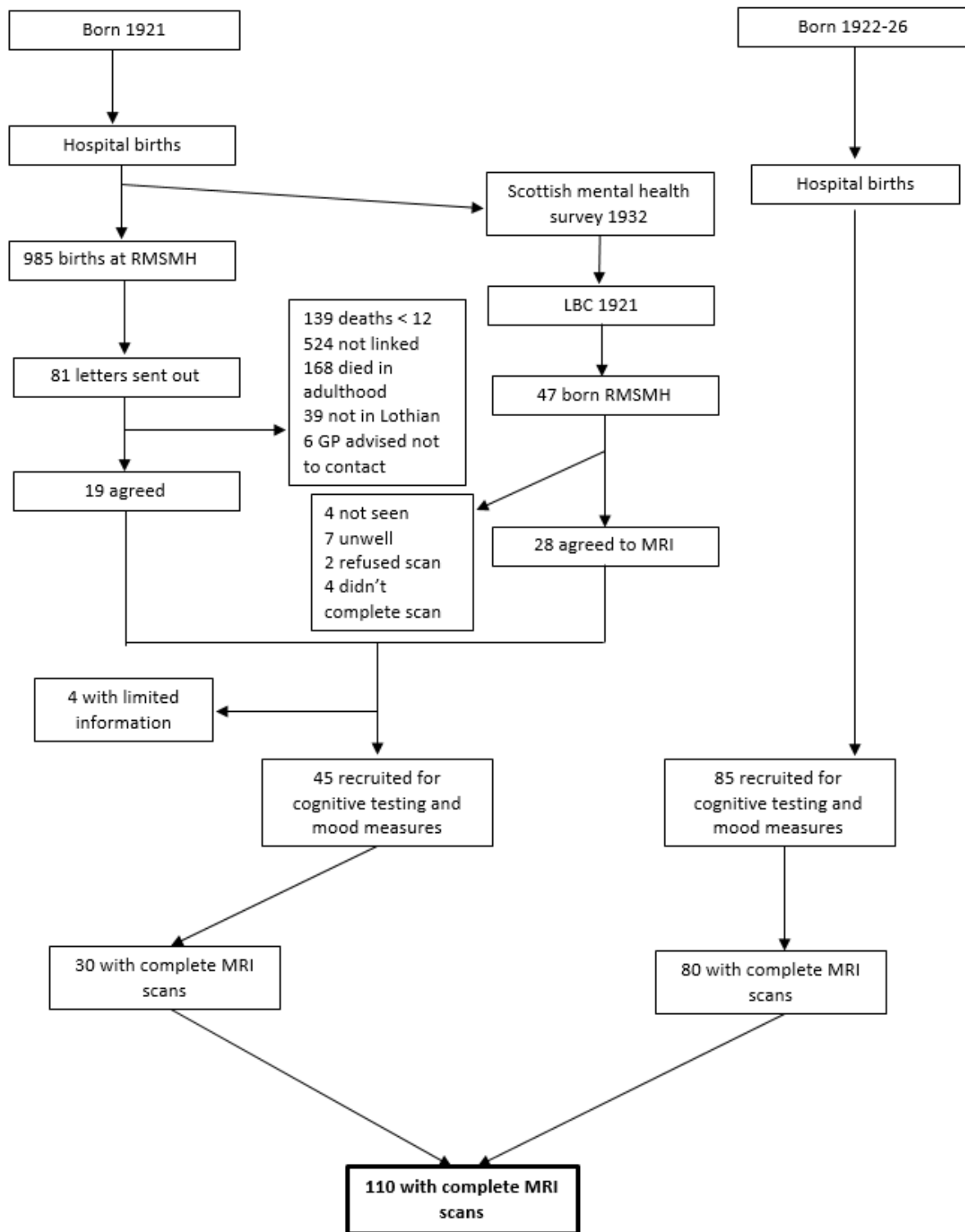
B. The Dutch Famine Birth Cohort



C. The Lothian Birth Cohort 1936



D. The Simpson's Birth Cohort Study



RMSM= Royal Maternity and Simpson Memorial hospital

Supplementary table 1: Details of early life factors available in all cohorts

Early life factor	STRADL	Dutch Famine Birth Cohort	LBC 1936	Simpson's cohort	Descriptive statistics
Birth weight	Available for: 1) all ACONF participants 2) 154 Walker participants. Taken from: 1) the ACONF database which had birth records taken from the Aberdeen Maternity and Neonatal database at the Aberdeen Maternity Hospital. Recorded in pounds and ounces and converted to grams. 2) the Walker database which had birth records in Dundee. Recorded in grams.	Available for: all participants Taken from: birth records at the Wilhelmina Gasthuis Hospital in Amsterdam. Recorded in grams	Available for: 140 participants Taken from: birth records from the Simpson Memorial Hospital, Bellshill Hospital Lanarkshire and Aberdeen Maternity Hospital. Recorded in pounds and ounces and converted to grams.	Available for: all participants Taken from: birth records from the Royal Maternity and Simpson Hospital, the Elsie Memorial Hospital and the Lyin-in Institution. Recorded in pounds and ounces and converted to grams	Mean (SD) STRADL: 2.4% participants with birth weight <5lbs; 3309.3 (SD 529.4) Dutch Famine Birth Cohort: 3417.5g (SD 503.4) LBC 1936: 3351.5g (SD 482.1) Simpson's cohort: 3333.6g (SD 457.2); ANOVA: F(3, 365)= 0.99, p=0.37
Ponderal index	Not collected	Available for: all participants Calculated from: birth weight and length as birth weight/birth length ³	Available for: 79 participants Calculated from: birth weight and length birth weight/birth length ³	Available for: all participants Calculated from: birth weight and length birth weight/birth length ³	Mean (SD) Dutch Famine cohort: 26.16 (SD 2.30) LBC 1936: 27.33 (SD 5.29) Simpson's cohort: 25.55 (SD 4.10) ANOVA: F(2, 297)= 4.72, p=0.01
Childhood IQ	Available for: all ACONF participants Calculated by: adjusting the raw scores from the Schonell and Adams Essential Intelligence Test (age 9 IQ), for age in days at testing and placed on an IQ type scale (mean=100, SD=15).	Not available	Available for: all participants Calculated by: adjusting the raw scores from the Moray House Test number 12 (MHT) (age 11 IQ), for age in days at testing and placed on an IQ type scale (mean=100, SD=15).	Available for: 47 participants Calculated by: adjusting the raw scores from the Moray House Test number 12 (MHT) (age 11 IQ), for age in days at testing and placed on an IQ type scale (mean=100, SD=15).	Mean (SD) STRADL: 102.0 (8.9) LBC 1936: 100.80 (SD 15.3) Simpson's cohort: 101.7 (14.5) ANOVA: (F(2)= 1.35, p= 0.26
Education	Available for: all participants Measured: divided into compulsory, more than compulsory and post secondary and dichotomised at compulsory.	Available for: all participants Measured: a 10 point scale (1= Primary education not completed, 10=University completed) and dichotomised at lower secondary school	Available for: all participants Measured: using years of education and dichotomised at 11 years.	Available for: all participants Measured: using years of education and dichotomised at 11 years.	% of participants with low education (\leq 11 years) STRADL 24%; Dutch Famine 62.7% LBC 1936 71.7% Simpson's cohort 80.9% Chi square: $\chi^2(3)= 8.0, p=0.05$
Childhood SES	Available for: all participants Obtained from: self-reports by each participant at the time of the interview in adulthood and classified as manual and non-manual	Available for: all participants Obtained from: birth records We classified childhood SES as manual and non-manual at the time of the child's birth	Available for: all participants Obtained from: self-reports by each participant at the time of the interview in adulthood and checked using the General Register Office's Census, 1951. Classification of Occupations We classified childhood	Available for: all participants Obtained from: self-reports by each participant at the time of the interview in adulthood and classified as manual and non-manual at age 11	% of participants with low childhood SES (manual parental occupation) STRADL: 67.2% Dutch famine birth cohort: 66.7% LBC 1936: 74.2% Simpson's cohort: 69.1%

			SES as manual and non-manual at age 11		Chi square: $\chi^2(3)=5.7, p=0.13$
--	--	--	--	--	--

Supplementary Table 2: Sequence parameters for MRI scanning in all cohorts

Sequence name	Acquisition method	Field of view (mm)	Matrix	Slices	Thickness (mm)	Voxel (mm)	TR/TE/TI (ms)
STRADL (Aberdeen)							
T2-weighted	3D TSE	250	512 x 512	320	0.5	0.5 x 0.5 x 0.5	2500/314
SWI	FFE	230	768 x 768	130	1	0.3 x 0.3 x 1.0	31/7.2,14.4,20.6,26.8
FLAIR	3D IR FSE	240	256 x 256	160	1	0.94 x 0.94 x 1.0	8000/349/2400
T1-weighted volume	3D IR TFE	240	256	160	1	1.0 x 1.0 x 1.0	8.3/3.8/1031
STRADL (Dundee)							
T2-weighted	3D TSE	256	256 x 256	320	0.5	0.5 x 0.5 x 0.5	3200/ 408
SWI	FFE	230	320 X 160	144	1.0	0.4 x 0.4 x 1.0	28/20
FLAIR	3D IR FSE	256	256 X 256	160	1.0	1.0 x 1.0 x 1.0	5000/386/1800
T1-weighted volume	3D IR TFE	256	256 x256	208	1.0	1.0 x 1.0 x 1.0	1740/ 2.62/ 900
Dutch Famine Birth cohort							
T2-weighted	2D TSE	230 x 230	512 x 512	28	4	0.45 x 0.45	3000/80
SWI-weighted	3D SWI	220 x 220	448 x 448	220	1.2	0.49 x 0.49 x 0.6	19.8/25.7
FLAIR	3D	250 x 250	240 x 240	321	1.1	1.1 x 1.1 x 1.12	4800/365
T1-weighted volume	3D TFE	256 x 256	256 x 256	180	1.0	1.1 x 1.1 x 1.2	6.8/3.1
LBC 1936							
T2-weighted	FSE	256 x 256	256 x 256	80	2	1 x 1 x 2	1 1320/105
T2*-weighted	Gradient echo	256 x 256	256 x 192*	80	2	1 x 1 x 2	940/15
FLAIR	FSE	256 x 256	256 x 192*	40	4	1 x 1 x 4	9002/147/2200
T-1 mapping	FSPGR	256 x 256	128 x 128*	72	2	1 x 1 x 2	6/2
T1-weighted volume	3D IR-Prep FSPGR	256 x 256	192 x 192*	160	1.3	1 x 1 x 1.3	10/4/500
Simpson's cohort							
T2-weighted	FSE	240 x 240	256 x 256	-	5	-	6300/102

T2*-weighted	Gradient echo	-	-	-	-	-	-
FLAIR	FSE	240 x 240	256 x 192	-	5	-	9000/140/2200
T-1 mapping	FSPGR	240 x 240	256 x 224	-	5	-	450/8
T1-weighted volume	3D IR-Prep FSPGR	240 x 240	256 x 256	-	1.7	-	400

* Zero filled to 256 x 256; TR: repetition time; TE: echo time; FLAIR: Fluid-attenuated inversion recovery; SWI: susceptibility weighted imaging; IR-Prep: inversion recovery prepared; FSPGR: fast spoiled gradient echo; FSE: fast spin echo. – is used where data were not available

Comparison of participants with and without MRI.

Those who declined MRI were older (STRADL $U= 54087.5$, $p=0.01$; Dutch Famine Birth cohort ($U= 1353.5$, $p=0.001$); Simpson's cohort ($U=530.5$, $p<0.001$) and more likely to be diagnosed hypertensive (Simpson's cohort $\chi^2(1)= 4.4$, $p=0.036$) and diabetic (STRADL only $\chi^2(1)= 14.4$, $p<0.001$). In STRADL and the LBC1936 they were also more likely to have lower childhood IQ (STRADL $U= 1947.5$, $p=0.03$; LBC1936 $U= 110284.0$, $p=0.01$) and lower adult and childhood social class (STRADL only; manual vs non-manual adult occupation: $\chi^2(1)=9.2$, $p<0.01$), manual vs non-manual Father's occupation $\chi^2(1)= 4.5$, $p=0.04$).

Comparison of participants and non-participants.

Participants in this wave of the Dutch Famine Birth cohort were randomly sampled from 1307 eligible cohort members. Participants in this study had a higher birth weight than eligible non-participants (3438g vs 3346g). In STRADL those who participated in the face to face assessment in this study were older (median age 62) with higher levels of education (40% with university education) compared to the previous wave of STRADL and the GS:SFHS population. In the previous wave of STRADL respondents to the remote assessment were predominantly female (62%) and were older (mean 50.48 SD 13.41) and from less socioeconomically deprived areas compared with non-respondents in the Scottish Index of Multiple Deprivation (SIMD) 2009 (4123 vs 3733)¹⁵. Participants in this this wave of the LBC1936 were less likely to be hypertensive, have high cholesterol and smoke at wave 1 than those who declined to participate and less likely to have low education and childhood IQ.

Supplementary Table 3: Key characteristics of STRADL face-to-face assessment broken down by MRI status, STRADL remote follow up, wider GS:SFHS baseline assessment and the wider Scottish population.

	STRADL						
	Scottish Population ^{60,61}	GS:SFHS total (N=21525) ⁶²	Wave 1 Remote assessment		This study Face-to face assessment (n= 1,188)		
			Non-respondents (N=11907)	Respondents (N= 9618)	All (n= 1,188)	With MRI (n=1076)	Without MRI (n=109)
Gender (n, % female)	51.5	41	57	62§	59	40.5	50.5
Mean age (SD)	-	-	-	-	59.3 (10.1)	59.3 (10.2)	62.1(8.7)*
Median age Male	-	47	43	54	62	62	62
Median age Female	-	48	45	52	61	61	61
Hypertension, %	66	27.2	-	-	27.7	27.7	33.6
Diabetes, %	5	6.9	-	-	7.9	6.4	16.0**
Current smokers %	21	35	-	-	40.3	45.3	44.6
Annual income >£30,000 (%)		60	57	63	-	-	-
SIMD		3910 (1842)	3733 (1875)	4123 (1777)	-	-	-
Adult SES, manual	-	-	-	-	31.9	32.2	46.4**
Employment in those aged up to 75 years (%)							
Unemployed	5	1.7	5	4	3	-	-
Retired	12.9	15.1	13	18	32	-	-
Employed	69	62.8	71	71	65	-	-
Education (%)							
Degree	26	33	28	37	40	-	-
No qualifications	27	5	9	7	25	-	-
Childhood IQ, mean (SD)	-	-	-	-	102.0 (8.9)	102.5 (8.8)	97.4 (12)*
Low education, n (%)	-	-	-	-	24.0	24.0	29.7

Manual childhood SES, %	-	-	-	-	67.2	67.2	77.1*
Birth weight, g, mean (SD)	-	-	-	-	3309.3 (529.4)	3309.3 (529.4)	3309.3 (436.5)

§ $t(21457) = -31.25, p < 0.001, \text{cohen's } d = 0.21^{15}$; * those with MRI vs those without MRI $p < 0.05$; ** those with MRI vs those without MRI $p < 0.01$

Abbreviations: SIMD the Scottish Index of Multiple Deprivation 2009; numbers represent mean rank (SD); GS:SFHS Generation Scotland Scottish Family Health Study; SES socioeconomic status; - Is used where data are not available.

Supplementary Table 4: Key characteristics of the Dutch Famine Birth cohort in the current study broken down by MRI status, previous waves and the wider Dutch population.

	Dutch population ^{63,64,65,66}	Original cohort (n=2414) ⁶⁷	1994-1996 (Aged 50) ⁶⁷	2002-2004 (Aged 58) ⁶⁸	This study 2012-2013 (Aged 68)		
			(n=741)	(n=721)	All (n=151)	With MRI (n=118)	Without MRI (n=33)
Age, mean (SD)					67.5 (0.9)	67.5** (0.9)	68.0** (0.8)
Females, %	50.5	48.6	52	53	55.6	55.9	54.5
Adult SES, manual, %	-				41.1	37.3	54.5
Birth weight (g), mean (SD)	-	3346 (478)	3347	3363 (465)	3438.3* (488.0)	3417.5 (503.4)	3512.4 (427.5)
Ponderal index, mean (SD)	-	26.4 (2.4)	26.3 (2.3)	26.3 (2.3)	26.2 (2.3)	26.2 (2.3)	26.7 (2.6)
Hypertension, %	20.1	-			54.7	62 (53)	20 (60.6)
Aged 50-59	33.7	-					
Systolic BP, mean (SD)		-	126 (16)	137 (18)	151 (18)	152 (17)	148 (23)
Diabetes, %		-			19.2)	20.3	15.2
Hypercholesterolemia, %		-			47.3	47.9	45.0
Smoking, current, %	19.0	-	34.0	23.0	11.3	11.0	12.1
SES (ISEI)	46	-	48 (13)	47 (40-59)	51 (16-77)	51 (16-77)	43 (25-76)
Low education, %	-	-	66		60.3	62	52
Low childhood SES, n (%)		76.0	70.0	74.0	67.5	66.7	70.4

* Participants in this study vs eligible non-participants $p < 0.05$; Abbreviations: SES socioeconomic status; ISEI A standard international socio-economic index of occupational status (higher number represents higher socioeconomic status).

Supplementary Table 5: Key characteristics of wave 1, wave 2 and those who refused wave 2 of the LBC1936 compared to the wider Scottish population. Characteristics of participants in wave 2 are further broken down by MRI status.

	Scottish population ^{61,69}	Wave 1		This study (Wave 2)		
		Wave 1 all (n=1091)	Refused wave 2 (n=225)	All (n=866)	With MRI (n=685)	Without MRI (n=186)
Median age	-	69.5 (0.8)	69.6 (0.8)	72.7 (0.7)	72.7 (0.7)	72.8 (0.7)
Gender (n, % female)	51.5	49.8	55.6	48.3	52.8	47.8
Adult SES¥	-	2.4 (0.91)	2.6 (0.86)	2.4 (0.9)	2.4 (0.9)	2.4 (0.9)
Adult SES, manual, n (%)	-	21.7	25.5	20.7	79.6	20.4
Current smokers, n (%)	31.0	11.5	21.8**	8.4	8.2	9.1
Hypertension, n (%)	41.0	433 (39.7)	103 (45.8)*	49.1	49.1	48.9
Diabetes, n (%)	3.8.0	91 (8.3)	16 (7.1)	11.0	10.3	13.4
Hypercholesterolemia, n (%)	-	386 (35.4)	93 (41.3)*	33.9	41.9	38.2
Childhood IQ, mean (SD)	-	100.0 (14.9)	97.4 (13.4)**	100.7 (15.3)	100.8 (15.3)	100.1 (0.6)∞
Education (%)						
Degree	20.0	158 (14.5)	25 (11.1)	15.4	16.2	12.4
No qualifications	33.0	193 (17.7)	40 (17.8)	17.7	17.1	19.9
Low education n (%)	-	812 (74.4)	184 (81.8)**	72.5	71.6	75.8
Father's SES¥	-	2.91 (0.94)	2.87 (0.94)	2.92 (0.9)	2.9 (0.9)	2.9 (1.1)
Manual childhood SES, n (%)	-	700 (72.9)	121 (53.8)	73.5	74	71.7
Birth weight (g), mean (SD)	-	3299.3 (490.5)	3223.1 (476.8)	3323.2 (493.7)	3348.9 (482.9)	3215.1 (531)
Ponderal index, mean (SD)	-	26.9 (5.0)	25.8 (4.1)	27.3 (5.2)	27.4 (5.3)	27.2 (4.8)

* Those who refused wave 2 vs participants of wave 2 p<0.05; **Those who refused wave 2 vs participants of wave 2 p<0.01; ∞those with MRI vs those without MRI p<0.05; Abbreviations: SES socioeconomic status ; ¥ Father's SES and adult SES are based on five categories from professional (1) to unskilled labour (5) (higher number indicates lower SES; - is used when data were not available.

Supplementary Table 6: Key characteristics of the Simpson’s cohort broken down by MRI status, characteristics of the LBC1921 and the wider Scottish population.

	Scottish Population ^{61,69}	LBC1921 ¹⁷	Simpson’s		
			Wave 1	All (n=130)	With MRI (n=110)
Mean age	-	-	78.4 (30.8)	78.2(1.4)	79.5** (1.1)
Gender (% female)	51.5	54.0	69.2	70.0	65.0
Adult SES*, mean (SD)	-	2.24 (0.88)	2.6 (0.7)	2.5 (0.8)	2.9 (0.5)
Adult SES, manual, %	-	-	62.3	58.2	85.0
Current smokers (%)	31	-	9.2	7.3	20.0
Hypertension (%)	41	-	48.5	44.5	70.0**
Diabetes (%)	3.8	-	5.4	6.4	0.0
Childhood IQ	-	101.6 (14.2)	100.1 (14.8)	101.7 (14.50)	15.4
MHT raw score, mean (SD)	34.5 (15.5)	-	42.9 (14.0)	44.5 (13.7)	38.8 (14.6)
Low education (%)	-	-	82.3	80.9	90
Father's SES*, mean (SD)	-	2.73 (0.93)	3.2 (0.8)	3.2 (0.9)	3.25 (0.8)
Father's SES, manual (%)	-	-	70.0	69.1	75.0
Birth weight, (g) mean (SD)	-	-	3331.5 (461.7)	3333.6 (457.2)	3319.65 (497.9)
Ponderal index mean (SD)	-	-	25.7 (4.1)	25.8 (4.2)	25.4 (3.3)

*those with MRI vs those without $p < 0.01$; Abbreviations: SES socioeconomic status; Father’s SES is based on five categories from professional (1) to unskilled labour; (higher number indicates lower SES); - is used when data were not available.

Supplementary Table 7: Multiple regression analysis of early life factors and cSVD in STRADL, the Dutch Famine Birth Cohort, the LBC 1936 and the Simpson's cohort.

	STRADL		Dutch Famine		LBC		Simpson's		Meta-analysis	
	OR (95% CI) ^a	p	OR (95% CI) ^b	p	OR (95% CI) ^b	p	OR (95% CI) ^b	p	OR (95% CI)	p
Moderate/severe cSVD										
Birth weight	0.94 (0.86-1.04)	0.22	0.95 (0.86-1.05)	0.29	1.001 (0.92-1.10)	0.98	0.94 (0.85-1.04)	0.21	0.96 (0.92-1.01)	0.08
Low education	1.41 (0.41-4.78)	0.59	0.72 (0.27-1.95)	0.52	1.23 (0.31-4.85)	0.77	1.08 (0.34-3.40)	0.90	1.02 (0.57-1.82)	0.95
Manual Father's occupation	1.62 (0.34-7.72)	0.54	0.67 (0.23-1.91)	0.45	0.55 (0.19-1.58)	0.26	0.40 (0.16-1.01)	0.05	0.59 (0.34-1.02)	0.06
Moderate/severe WMH										
Birth weight	0.93 (0.83-1.04)	0.21	1.02 (0.93-1.12)	0.68	0.99 (0.90-1.08)	0.79	0.90 (0.81-0.999)	0.048	0.96 (0.91-1.02)	0.20
Low education	1.12 (0.22-5.82)	0.89	0.53 (0.21-1.37)	0.19	0.81 (0.29-2.84)	0.74	0.88 (0.28-2.7)	0.82	0.74 (0.42-1.28)	0.28
Manual Father's occupation	na	na	1.29 (0.47-3.58)	0.63	1.03 (0.33-3.21)	0.96	0.85 (0.33-2.22)	0.75	1.03 (0.57-1.86)	0.92
Presence of 1+ lacune										
Birth weight	0.91 (0.83-1.01)	0.07	0.94 (0.85-1.03)	0.17	0.99 (0.86-1.14)	0.89	0.95 (0.86-1.05)	0.31	0.94 (0.89-0.99)	0.02
Low education	0.64 (0.13-3.04)	0.57	1.45 (0.53-3.95)	0.47	0.86 (0.09-8.13)	0.89	1.11 (0.34-3.59)	0.86	1.11 (0.57-2.15)	0.76
Manual Father's occupation	0.84 (0.21-3.32)	0.80	0.86 (0.30-2.41)	0.86	0.34 (0.07-1.58)	0.17	0.42 (0.17-1.05)	0.07	0.58 (0.32-1.04)	0.07
Presence of 1+ CMB										
Birth weight	0.97 (0.87-1.08)	0.55	0.92 (0.81-1.05)	0.20	1.06 (0.95-1.18)	0.33	1.08 (0.93-1.26)	0.32	1.00 (0.93-1.08)	0.94
Low education	0.69 (0.14-3.30)	0.64	1.05 (0.30-3.74)	0.94	1.06 (0.21-5.45)	0.94	4.07 (0.43-38.82)	0.22	1.12 (0.51-2.47)	0.77
Manual Father's occupation	1.38 (0.28-6.72)	0.69	0.39 (0.11-1.44)	0.16	0.42 (0.13-1.42)	0.17	0.44 (0.12-1.65)	0.22	0.51 (0.26-0.98)	0.04
Presence of 1+ infarct										
Birth weight	0.91 (0.81-1.02)	0.09	0.98 (0.89-1.09)	0.72	0.94 (0.85-1.04)	0.26	0.93 (0.80-1.08)	0.35	0.94 (0.89-1.00)	0.03
Low education	0.43 (0.05-3.53)	0.43	1.86 (0.62-5.63)	0.27	2.91 (0.35-24.49)	0.33	0.92 (0.17-4.84)	0.92	1.40 (0.64-3.07)	0.40
Manual Father's occupation	0.54 (0.13-2.30)	0.40	1.74 (0.54-5.66)	0.36	0.49 (0.16-1.54)	0.22	0.37 (0.10-1.40)	0.37	0.66 (0.33-1.33)	0.25
Moderate/severe atrophy										
Birth weight	0.89 (0.78-1.01)	0.07	1.01 (0.92-1.12)	0.80	0.97 (0.90-1.05)	0.47	1.01 (0.91-1.12)	0.87	0.97 (0.93-1.02)	0.31
Low education	0.71 (0.08-6.25)	0.75	1.46 (0.52-4.12)	0.48	1.35 (0.44-4.12)	0.60	0.51 (0.17-1.48)	0.22	0.99 (0.54-1.80)	0.97
Manual Father's occupation	1.15 (0.12-10.61)	0.90	0.94 (0.32-2.75)	0.91	0.82 (0.31-2.16)	0.82	0.67 (0.26-1.73)	0.41	0.76 (0.48-1.21)	0.25
Moderate/severe EPVS										
Birth weight	0.92 (0.86-0.98)	0.01	0.95 (0.87-1.04)	0.29	0.97 (0.90-1.05)	0.47	0.98 (0.89-1.08)	0.68	0.95 (0.91-0.99)	0.007

Low education	0.97 (0.42-2.27)	0.94	0.63 (0.24-1.64)	0.34	2.40 (0.68-8.43)	0.17	1.36 (0.45-4.14)	0.59	1.07 (0.65-1.77)	0.80
Manual Father's occupation	0.70 (0.31-1.60)	0.40	0.99 (0.35-2.80)	0.99	0.53 (0.20-1.39)	0.53	0.54 (0.20-1.51)	0.24	0.66 (0.41-1.06)	0.09

cSVD= cerebral small vessel disease; WMH= white matter hyperintensities; CMB= cerebral microbleed; EPVS= enlarged perivascular spaces

NA: due to the low cSVD burden in STRADL participants it was not possible to conduct all analyses.

^a Analyses adjusted for variables in the table; ^b adjusted for variables in the table and age and sex

Additional results of associations between early life factors and SVD.

Ponderal index and SVD.

Ponderal index was not associated with SVD in the meta-analysis but point estimates were in the expected direction (higher ponderal index associated with fewer lesions) for total SVD burden, WMH burden, lacunes, infarcts and PVS.

Increasing ponderal index was not associated with WMH volume or brain volume in the Dutch Famine Birth Cohort, the LBC1936 or Simpson's cohort (Supplementary Table 4).

Results of associations between early life factors and SVD in individual cohorts.

Ponderal index

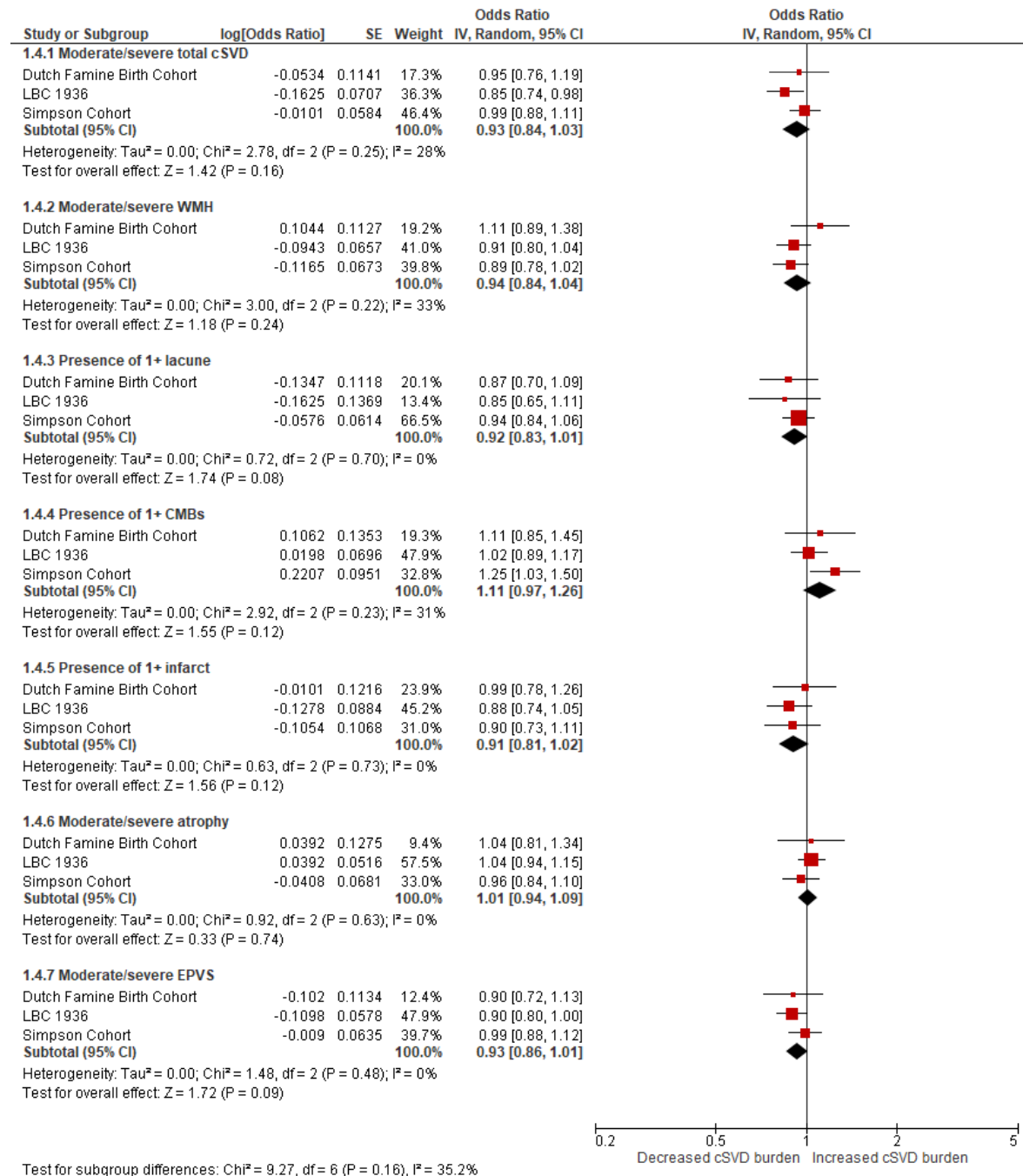
In the LBC1936, increasing ponderal index was associated with decreased risk of total SVD (per kg/m³ OR=0.85 95%CI=0.74-0.98, Supplementary Fig. 2) independent of age, sex, hypertension, smoking behaviour and adult SES.

Increasing ponderal index was associated with increased risk of cerebral micro-bleeds in the Simpson's cohort but not the expected direction (per kg/m³ OR=1.25 95%CI=1.03-1.50, Supplementary Fig. 2).

Childhood SES

In individual cohorts, low childhood SES was associated with lower total SVD burden (Simpson's cohort only OR=0.36, 95%CI=0.14-0.93) and decreased risk of infarcts (STRADL OR=0.52, 95%CI=0.28-0.94) none of which were in the expected direction (Figure 1D).

Supplementary Fig. 2: Forest plot showing associations between features of SVD and ponderal index in the Dutch Famine Birth cohort, LBC 1936 and Simpson's cohort . All analyses are adjusted for age, sex, hypertension, smoking behaviour, adult SES and gestational age. cSVD = total SVD burden



Supplementary Table 8: Associations between early life factors and whole brain volume as a percentage of the ICV and WMH volume in STRADL, the LBC1936 and Simpson’s cohort. All analysis are adjusted for age, sex, hypertension, smoking behaviour, adult SES

	STRADL		Dutch Famine Birth cohort		LBC1936		Simpson’s		Meta-analysis	
	B (95% CI)	p	B (95% CI)	p	B (95% CI)	p	B (95% CI)	p	B (95% CI)	p
Whole brain volume normalised for ICV										
Ponderal index*	-	-	-	-	0.09 (-0.001-0.001)	0.41	-0.14 (-0.09-0.02)	0.29	-0.04 (-0.18-0.11)	0.39
Birth weight (per 100g)*	0.11 (-0.001-0.004)	0.16	-	-	0.04 (-0.13-0.21)	0.62	-0.20 (-0.39-0.01)	0.40	-0.06 (-0.22-0.10)	0.45
Childhood IQ	-0.06 (-0.002-0.001)	0.34	-	-	0.04 (-0.04-0.12)	0.30	-0.09 (-0.55-0.41)**	0.73	0.04 (-0.04-0.12)	0.31
WMH volume normalised for ICV										
Ponderal index*	-	-	0.10 (-0.14-0.59)	0.27	-0.17 (-0.38-0.06)	0.11	-0.11 (-0.30-0.09)	0.19	-0.05 (-0.18-0.09)	0.48
Birth weight (per 100g)*	-	-	0.07 (-0.13-0.27)	0.38	-0.08 (-0.25-0.09)	0.40	-0.08 (-0.27-0.11)	0.43	-0.03 (-0.14-0.07)	0.54
Childhood IQ	-0.03 (-0.07-0.05)	0.44	-	-	-0.07 (-0.15-0.01)	0.12	0.14 (-0.35-0.57)**	0.30	-0.06 (-0.14-0.01)	0.11

* This analysis is also adjusted for gestational age; ** due to sample size this analysis is only adjusted for age and sex; - data were not available

Supplementary Table 9: Multiple regression analysis of Childhood IQ, education, childhood SES and cSVD in STRADL and the LBC 1936

NOTE: It was not possible to include the Simpson's cohort in this analysis due to the small number of participants with childhood IQ scores. Childhood IQ was not available in the Dutch Famine Birth cohort therefore this cohort was not included in this analysis.

All analyses are adjusted for each early life factor in the table and age, sex, hypertension, smoking behaviour and adult SES.

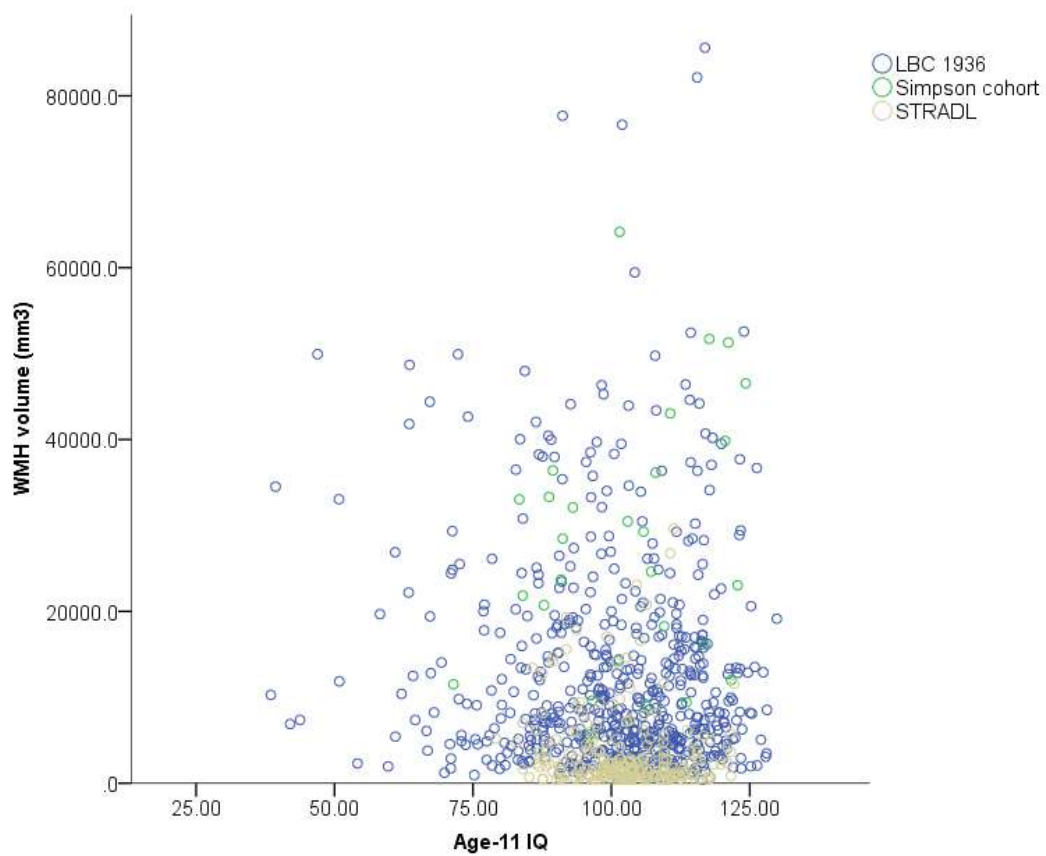
	STRADL		LBC 1936		Meta-analysis	
	OR	p	OR	p	OR	p
	(95% CI)		(95% CI)		(95% CI)	
Moderate/severe cSVD						
Childhood IQ	0.97 (0.93-1.004)	0.06	0.99 (0.97-1.00)	0.07	0.98 (0.97-0.997)	0.02
Low education	0.87 (0.42-1.80)	0.71	0.99 (0.56-1.75)	0.97	0.94 (0.60-1.48)	0.80
Manual Father's occupation	1.11 (0.54-2.28)	0.78	1.32 (0.75-2.32)	0.34	1.24 (0.79-1.93)	0.35
Moderate/severe WMH**						
Childhood IQ*	0.98 (0.94-1.02)	0.34	0.99 (0.98-1.01)	0.29	0.99 (0.98-1.00)	0.20
Low education	1.19 (0.46-3.06)	0.72	0.79 (0.47-1.33)	0.37	0.87 (0.55-1.37)	0.54
Manual Father's occupation	1.28 (0.51-3.21)	0.60	1.25 (0.75-2.08)	0.39	1.26 (0.80-1.96)	0.32
Presence of 1+ lacune						
Childhood IQ*	1.02 (0.95-1.09)	0.66	0.97 (0.95-1.00)	0.04	0.98 (0.95-1.02)	0.29
Low education	0.34 (0.10-1.16)	0.08	1.10 (0.38-3.18)	0.86	0.64 (0.20-2.01)	0.44
Manual Father's occupation	2.74 (0.79-9.50)	0.11	0.30 (0.13-0.71)	0.01	0.87 (0.10-7.48)	0.90
Presence of 1+ CMB						
Childhood IQ*	0.95 (0.90-0.995)	0.03	0.995 (0.98-1.01)	0.59	0.98 (0.93-1.02)	0.32
Low education	1.06 (0.42-2.67)	0.91	1.35 (0.67-2.71)	0.41	1.24 (0.71-2.18)	0.45
Manual Father's occupation	0.78 (0.33-1.87)	0.58	1.20 (0.62-2.31)	0.58	1.02 (0.61-1.73)	0.93
Presence of 1+ infarct						
Childhood IQ*	0.98 (0.89-1.08)	0.68	0.98 (0.97-1.00)	0.03	0.98 (0.97-0.997)	0.02
Low education	1.14 (0.20-6.50)	0.88	1.07 (0.56-2.05)	0.84	0.95 (0.60-1.48)	0.80
Manual Father's occupation	0.67 (0.13-3.45)	0.63	0.77 (0.43-1.38)	0.38	1.24 (0.79-1.93)	0.35
Moderate/severe atrophy						
Childhood IQ*	1.04 (0.98-1.10)	0.24	0.98 (0.99-1.01)	0.67	1.01 (0.96-1.05)	0.79
Low education	0.60 (0.19-1.87)	0.37	0.89 (0.57-1.35)	0.58	0.82 (0.55-1.23)	0.34

Manual Father's occupation	2.12 (0.67-6.68)	0.20	0.88 (0.59-1.31)	0.51	1.13 (0.48-2.64)	0.78
Moderate/severe EPVS						
Childhood IQ*	0.98 (0.94-1.02)	0.37	1.01 (0.99-1.02)	0.48	1.00 (0.98-1.02)	0.85
Low education	1.29 (0.58-2.90)	0.53	0.91 (0.59-1.38)	0.65	0.99 (0.67-1.44)	0.94
Manual Father's occupation	0.82 (0.38-1.78)	0.62	1.04 (0.69-1.55)	0.86	0.99 (0.69-1.42)	0.94

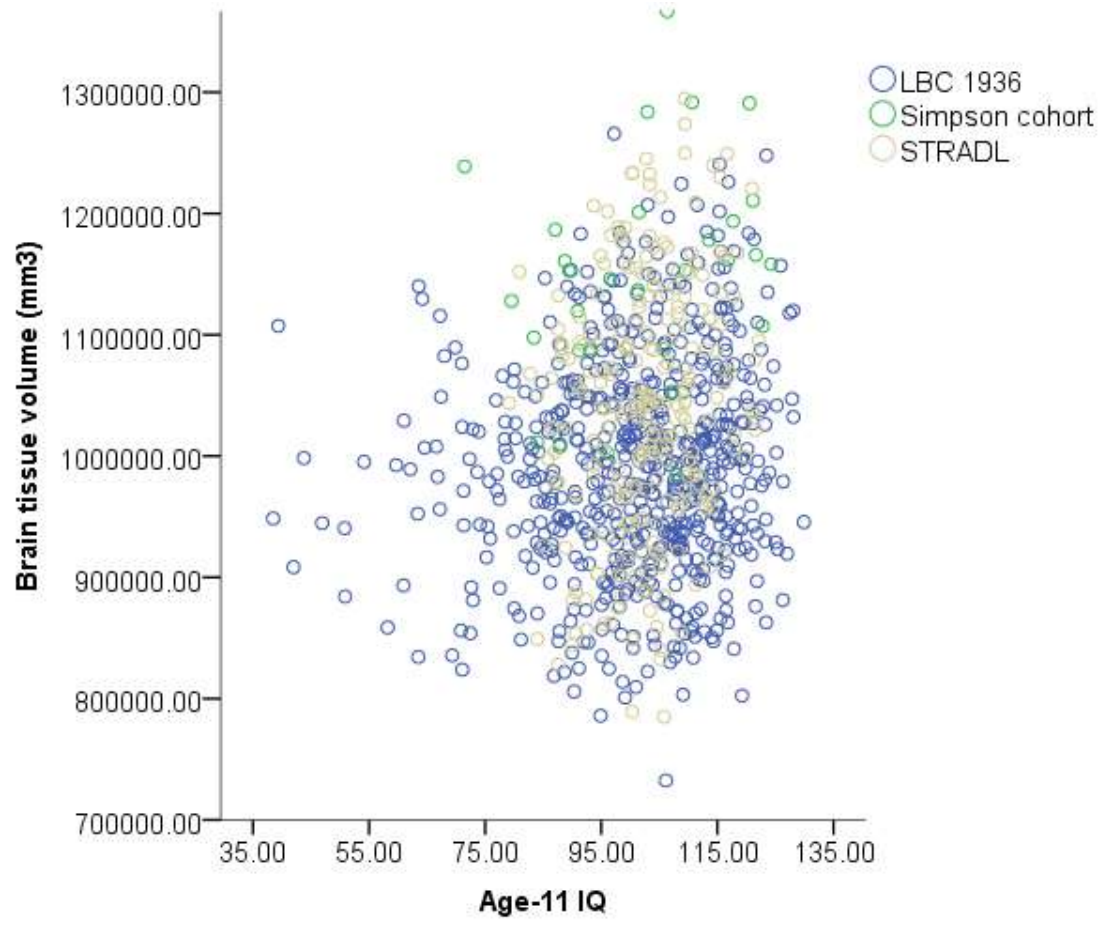
* OR is given per 1 point increase in IQ; moderate/severe WMH= Fazekas deep WMH score ≥ 2 or periventricular WMH score

Supplementary Fig. 3: Scatterplots of association between age 11 IQ and a) WMH volume b) whole brain volume in STRADL, the LBC 1936 and Simpson's cohort.

a)

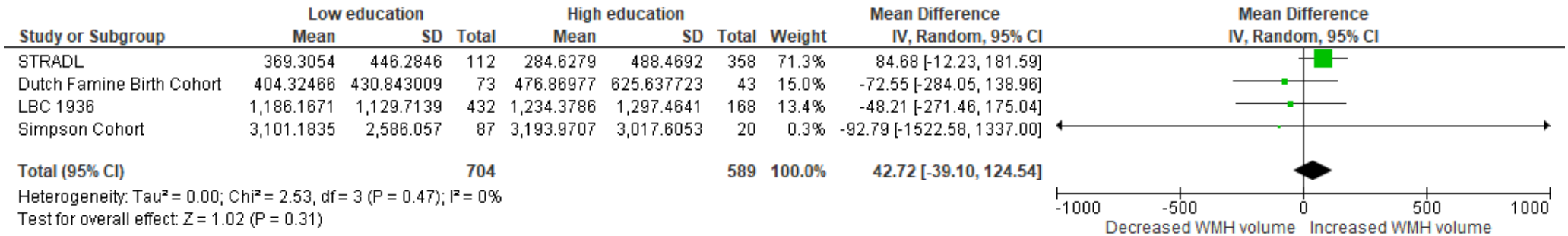


b)



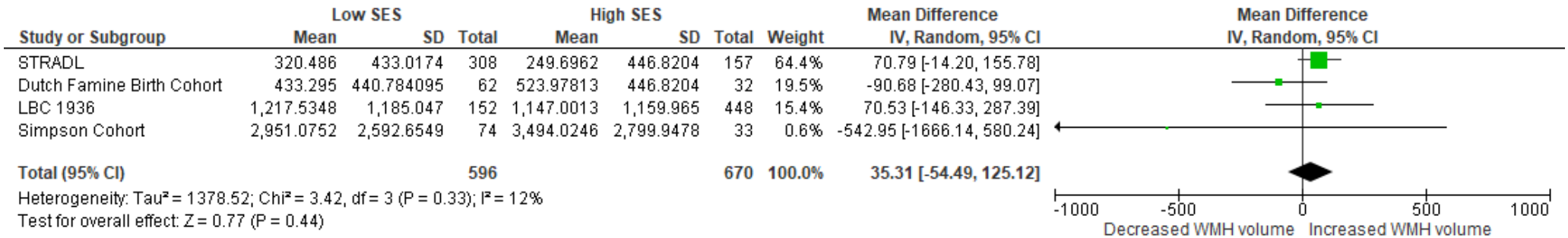
Supplementary Fig. 4: Forest plots showing mean white matter hyperintensity (WMH) volume for those with a) low vs high levels of education b) low vs high childhood SES, random effects model for the mean difference.

a)



Negative mean difference= low education (<11 years) decreases WMH volume; positive difference= low education increases WMH volume.

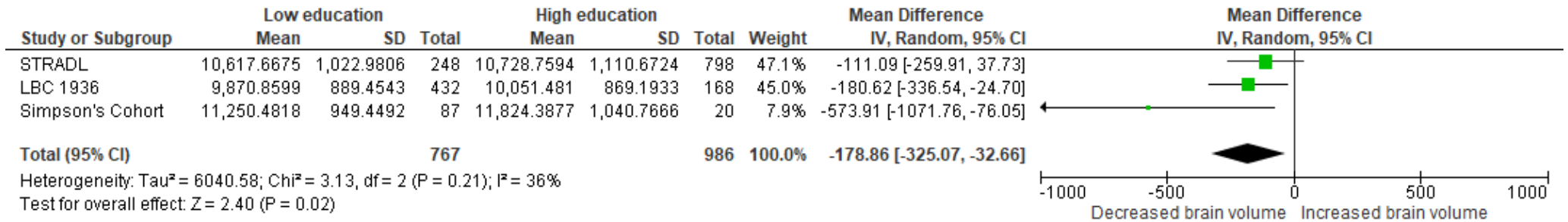
b)



Negative mean difference= low SES (manual paternal occupation) decreases WMH volume; positive difference= low SES increases WMH volume.

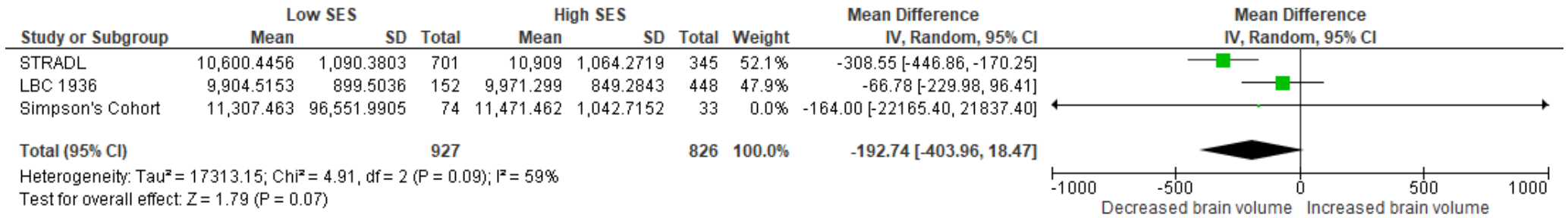
Supplementary Fig. 5: Forest plots showing total brain volume for those with a) low vs high levels of education b) low vs high childhood SES, random effects model for the mean difference.

a)



Negative mean difference= low education (<11 years) decreases brain volume; positive difference= low education increases brain volume

b)



Negative mean difference= low SES (manual paternal occupation) decreases brain volume; positive difference= low SES increases brain volume.

Supplementary Table 10: Associations between early life factors and whole brain volume as a percentage of the ICV and WMH volume in STRADL, the LBC 1936 and Simpson's cohort. All analysis are adjusted for age, sex, hypertension, smoking behaviour, adult SES.

	STRADL		Dutch Famine Birth cohort		LBC 1936		Simpson's		Meta-analysis	
	B (95% CI)	p	B (95% CI)	p	B (95% CI)	p	B (95% CI)	p	B (95% CI)	p
Whole brain volume as a % of ICV										
Low vs high education level	0·01 (-0·01-0·02)	0·76	-	-	0·03 (-0·05-0·11)	0·46	-0·14 (-0·06-0·33)	0·22	0·01(-0·04-0·06)	0·75
Low vs high childhood SES	-0·01 (-0·02-0·01)	0·81	-	-	0·04 (-0·04-0·12)	0·14	-0·09 (-0·29-0·11)	0·40	0·01(-0·05-0·07)	0·74
WMH volume										
Low vs high education level	0·06 (0·00-0·001)	0·21	0·08 (-0·12-0·28)	0·38	0·004 (-0·07-0·08)	0·90	-0·01 (-0·21-0·19)	0·97	0·02 (-0·03-0·08)	0·33
Low vs high childhood SES	-0·02 (-0·001-0·001)	0·61	0·16 (-0·10-0·50)	0·28	0·01 (-0·07-0·09)	0·85	-0·17 (-0·36-0·03)	0·08	-0·01 (-0·06-0·51)	0·87

Supplementary tables 8a-d: Univariate logistic regressions for associations between early life factors and markers of SVD.

a) STRADL

	Total SVD	WMH	EPVS	Lacunes	CMBs	Infarcts	Atrophy
OR (95%CI)							
Age	1.12 (1.09- 1.14)	1.11 (1.08- 1.15)	1.09 (1.08- 1.11)	1.11 (1.08- 1.15)	1.08 (1.05- 1.11)	1.04 (1.01- 1.07)	1.06 (1.03- 1.09)
Sex	0.84 (0.61- 1.17)	1.28 (0.86- 1.93)	0.73 (0.57- 0.93)	0.81 (0.52- 1.27)	0.68 (0.47- 1.01)	0.62 (0.37- 1.05)	0.26 (0.15- 0.44)
Hypertension	2.54 (1.82- 3.53)	2.05 (1.38- 3.06)	2.51 (1.90- 3.33)	1.43 (0.90- 2.28)	2.66 (1.80- 3.93)	1.43 (0.82- 2.47)	1.69 (1.03- 2.79)
Ever smoker	1.23 (0.88- 1.72)	1.41 (0.94- 2.11)	1.01 (0.78- 1.30)	0.76 (0.47- 1.22)	1.27 (0.85- 1.92)	1.44 (0.82- 2.52)	1.98 (1.17- 3.33)
Manual adult SES	1.16 (0.83- 1.62)	1.27 (0.85- 1.91)	0.75 (0.57- 0.97)	1.44 (0.92- 2.27)	1.02 (0.68- 1.54)	1.20 (0.69- 2.09)	0.80 (0.47- 1.39)
Birth weight	0.94 (0.85- 1.03)	0.91 (0.81- 1.03)	0.93 (0.87- 0.99)	0.91 (0.83- 1.01)	0.97 (0.87- 1.08)	0.92 (0.82- 1.02)	0.88 (0.78- 1.01)
Childhood IQ	0.98 (0.95- 1.01)	0.98 (0.94- 1.01)	0.98 (0.95- 1.02)	0.99 (0.94- 1.04)	0.98 (0.94- 1.03)	0.98 (0.91- 1.06)	1.01 (0.97- 1.06)
Education	1.58 (1.11- 2.24)	1.36 (0.89- 2.10)	1.17 (0.88- 1.55)	1.34 (0.82- 2.19)	1.68 (1.11- 2.54)	1.07 (0.59- 1.95)	0.88 (0.49- 1.59)
Manual childhood SES	0.87 (0.62- 1.21)	1.16 (0.76- 1.77)	0.95 (0.74- 1.23)	0.97 (0.61- 1.54)	0.78 (0.53- 1.17)	0.72 (0.43- 1.23)	1.06 (0.63- 1.78)

b) Dutch Famine Birth cohort

	Total SVD	WMH	EPVS	Lacunes	CMBs	Infarcts	Atrophy
OR (95% CI)							
Age	0.96 (0.60- 1.62)	1.38 (0.87- 2.21)	1.31 (0.81- 2.12)	0.71 (0.42- 1.20)	0.69 (0.36- 1.32)	1.04 (0.61- 1.80)	1.15 (0.69- 1.91)

Sex	2.79 (1.07-7.23)	1.83 (0.77-4.34)	1.92 (0.78-4.73)	1.34 (0.55-3.27)	0.99 (0.34-2.87)	0.60 (0.23-1.51)	0.83 (0.33-2.07)
Hypertension	0.79 (0.33-1.88)	0.85 (0.37-1.95)	1.05 (0.45-2.47)	0.70 (0.29-1.69)	0.87 (0.30-2.50)	0.77 (0.30-1.98)	1.08 (0.43-2.74)
Ever smoker	0.63 (0.26-1.50)	0.54 (0.24-1.26)	1.52 (0.62-3.74)	1.27 (0.51-3.15)	0.81 (0.28-2.35)	0.91 (0.35-2.33)	2.73 (0.94-7.98)
Manual adult SES	0.90 (0.36-2.25)	0.65 (0.27-1.58)	1.55 (0.65-3.72)	1.07 (0.44-2.61)	0.75 (0.24-2.34)	2.4 (0.94-6.15)	1.38 (0.55-3.48)
Birth weight	0.95 (0.87-1.03)	1.01 (0.93-1.09)	0.94 (0.87-1.03)	0.95 (0.87-1.04)	0.94 (0.85-1.05)	0.98 (0.91-1.09)	1.02 (0.93-1.12)
Low education	0.89 (0.37-2.15)	0.71 (0.31-1.65)	0.65 (0.27-1.54)	1.16 (0.47-2.88)	1.38 (0.48-4.29)	1.34 (0.50-3.61)	1.14 (0.44-2.97)
Manual childhood SES	0.65 (0.30-2.10)	1.27 (0.48-3.32)	1.11 (0.42-2.96)	1.00 (0.38-2.66)	0.46 (0.13-1.55)	1.65 (0.54-5.05)	1.00 (0.36-2.79)

c) LBC1936

	Total SVD	WMH	EPVS	Lacunes	CMBs	Infarcts	Atrophy
OR (95% CI)							
Age	1.38 (1.05-1.80)	1.28 (0.99-1.63)	1.07 (0.87-1.32)	1.31 (0.80-2.13)	1.50 (1.08-2.09)	0.90 (0.73-1.10)	1.45 (1.08-1.95)
Sex	1.54 (1.05-2.26)	1.56 (1.09-2.23)	0.88 (0.65-1.19)	0.93 (0.46-1.88)	0.83 (0.51-1.33)	0.75 (0.49-1.15)	0.45 (0.33-0.61)
Hypertension	1.70 (1.15-2.51)	2.15 (1.49-3.12)	1.53 (1.13-2.09)	2.90 (1.33-6.33)	1.07 (0.67-1.71)	2.24 (1.44-3.48)	1.17 (0.87-1.58)
Ever smoker	0.89 (0.60-1.30)	1.02 (0.71-1.46)	0.94 (0.69-1.27)	1.60 (0.77-3.31)	0.57 (0.35-0.91)	1.27 (0.83-1.94)	1.28 (0.95-1.73)
Manual adult SES	1.63 (1.04-2.53)	1.37 (0.89-2.1)	1.43 (0.98-2.01)	1.17 (0.49-2.78)	1.29 (0.74-2.25)	1.77 (1.09-2.87)	1.49 (1.02-2.17)

Birth weight	0.99 (0.91-1.07)	0.97 (0.99-1.05)	0.98 (0.92-1.05)	1.01 (0.88-1.16)	1.06 (0.96-1.18)	0.95 (0.87-1.04)	0.98 (0.91-1.05)
Childhood IQ	0.99 (0.97-0.99)	0.99 (0.98-1.00)	1.00 (0.99-1.01)	0.99 (0.96-1.01)	0.99 (0.98-1.01)	0.98 (0.97-0.99)	0.99 (0.98-1.00)
Low education	1.43 (0.87-2.34)	1.16 (0.78-1.75)	1.04 (0.74-1.46)	1.06 (0.48-2.32)	1.64 (0.92-2.92)	1.43 (0.87-2.34)	0.96 (0.69-1.33)
Manual childhood SES	1.58 (0.96-2.63)	1.37 (0.86-2.16)	0.99 (0.69-1.42)	0.56 (0.26-1.21)	1.32 (0.73-2.36)	0.93 (0.56-1.55)	0.84 (0.59-1.21)

d) Simpson's cohort

	Total SVD	WMH	EPVS	Lacunes	CMBs	Infarcts	Atrophy
OR 95% CI							
Age	1.03 (0.77-1.38)	1.08 (0.79-1.46)	1.00 (0.74-1.36)	1.11 (0.81-1.52)	1.19 (0.77-1.85)	1.00 (0.64-1.56)	1.18 (0.86-1.63)
Sex	0.80 (0.31-2.08)	0.65 (0.26-1.63)	0.98 (0.38-2.53)	0.98 (0.38-2.55)	0.39 (0.11-1.40)	1.04 (0.26-4.25)	0.39 (0.16-0.97)
Hypertension	1.61 (0.68-3.80)	1.48 (0.62-3.53)	0.83 (0.35-1.97)	1.45 (0.60-3.46)	2.21 (0.60-8.11)	4.72 (0.96-23.19)	2.47 (1.00-6.1)
Ever smoker	0.91 (0.39-2.15)	1.58 (0.65-3.86)	1.15 (0.48-2.76)	1.62 (0.66-4.0)	1.59 (0.44-5.85)	1.91 (0.47-7.74)	2.25 (0.88-5.74)
Manual adult SES	1.41 (0.59-3.33)	2.57 (1.06-6.25)	0.58 (0.24-1.40)	0.97 (0.40-2.35)	1.67 (0.47-5.89)	1.73 (0.47-6.3)	2.88 (1.16-7.14)
Birth weight	0.95 (0.86-1.04)	0.91 (0.83-1.01)	0.98 (0.89-1.08)	0.96 (0.87-1.05)	1.09 (0.95-1.26)	0.94 (0.82-1.09)	1.02 (0.93-1.13)
Childhood IQ	0.96 (0.87-1.05)	1.01 (0.96-1.07)	1.01 (0.96-1.07)	0.99 (0.93-1.05)	-	1.00 (0.91-1.11)	1.07 (0.98-1.17)
Low education	0.94 (0.32-2.80)	0.77 (0.26-2.24)	1.30 (0.45-3.76)	0.99 (0.32-3.02)	2.64 (0.32-22.06)	0.85 (0.17-4.29)	0.41 (0.15-1.14)

Manual childhood SES	0.42 (0.17- 1.04)	0.86 (0.34- 2.18)	0.56 (0.20- 1.55)	0.43 (0.17- 1.07)	0.47 (0.13- 1.67)	0.40 (0.11- 1.45)	0.64 (0.26- 1.61)
----------------------------	-------------------------	-------------------------	-------------------------	-------------------------	-------------------------	-------------------------	-------------------------