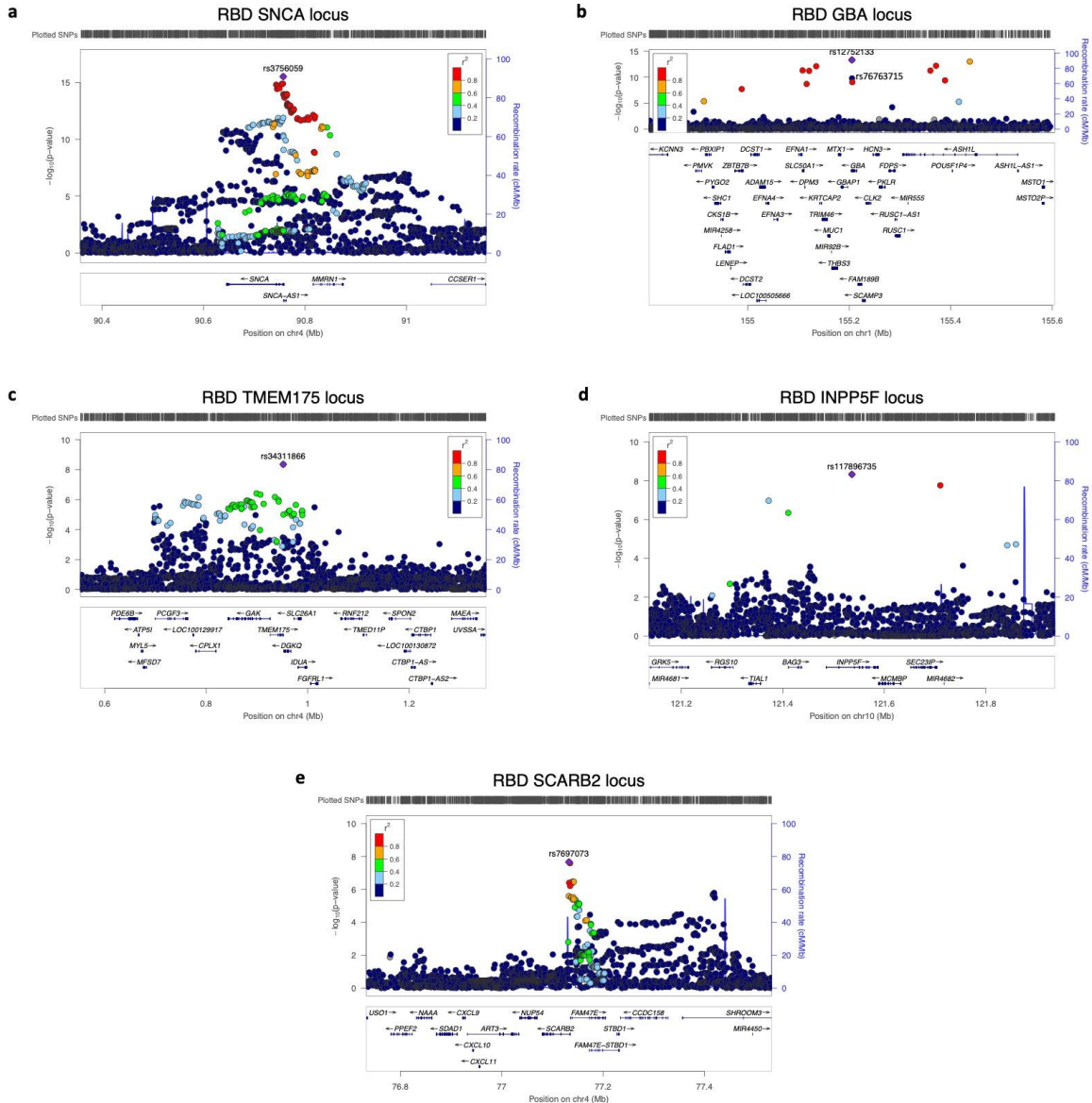
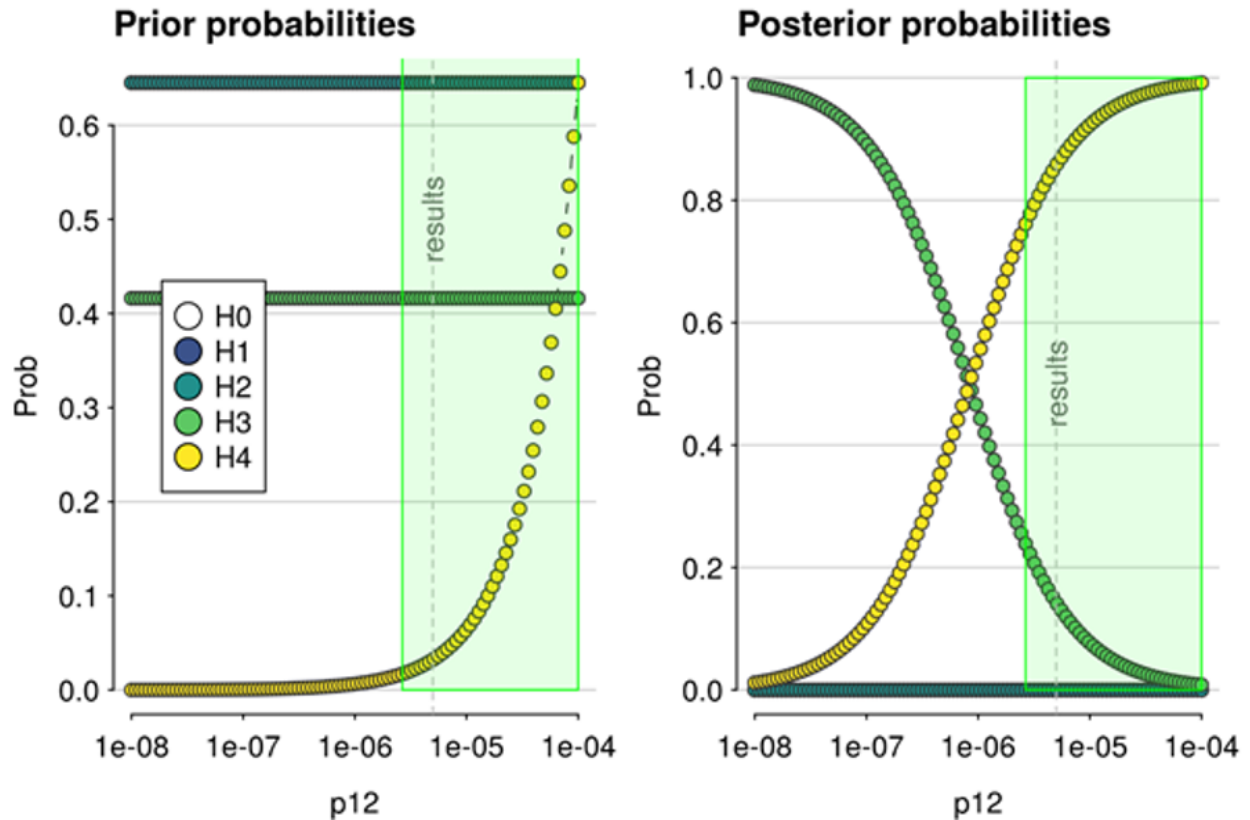


Genome-wide association study of REM sleep behavior disorder identifies novel loci with distinct polygenic and brain expression effects

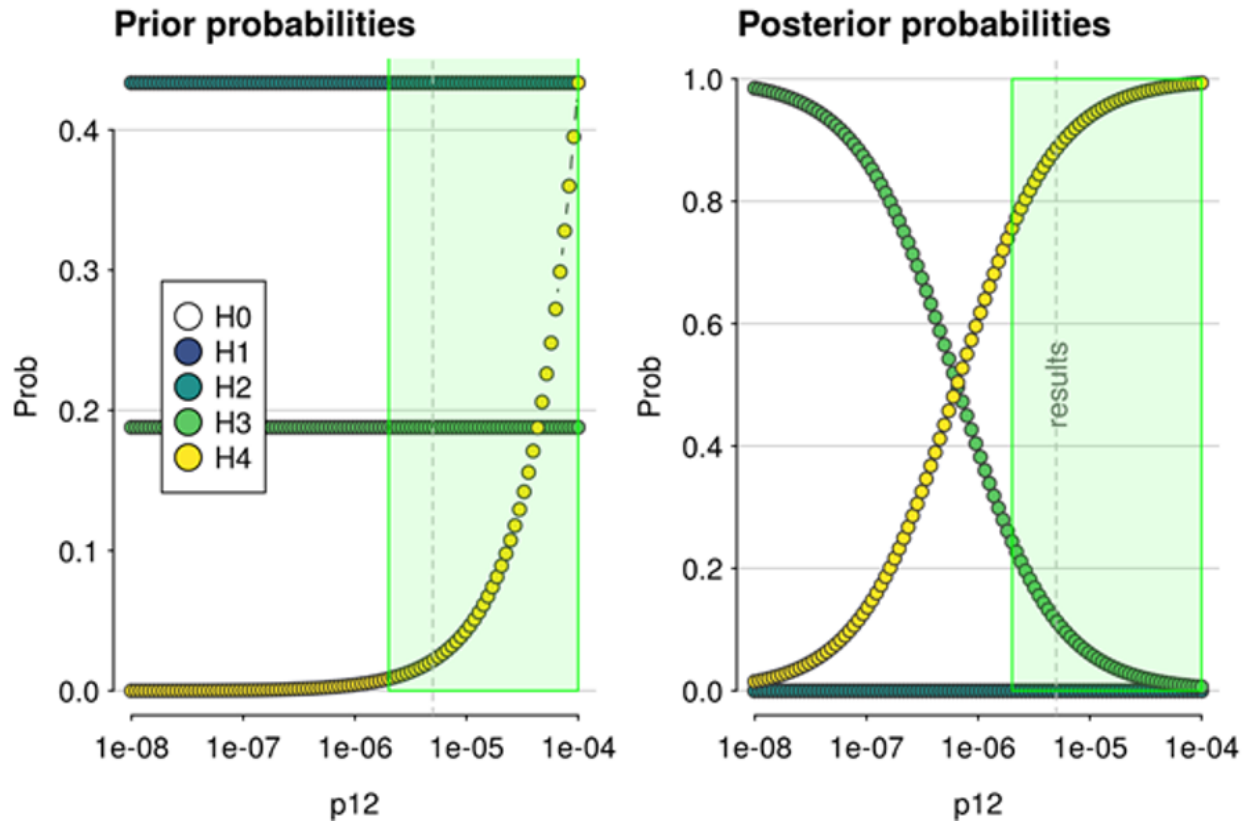
SUPPLEMENTARY FIGURES



Supplementary Figure 1. LocusZoom regional Manhattan plots for GWAS nominated RBD risk loci. Plots were generated using LocusZoom (<http://locuszoom.org/>). The x-axis indicates the genomic region defined by the top hit +/- 400kb, while the y axis represents the log-adjusted p values.

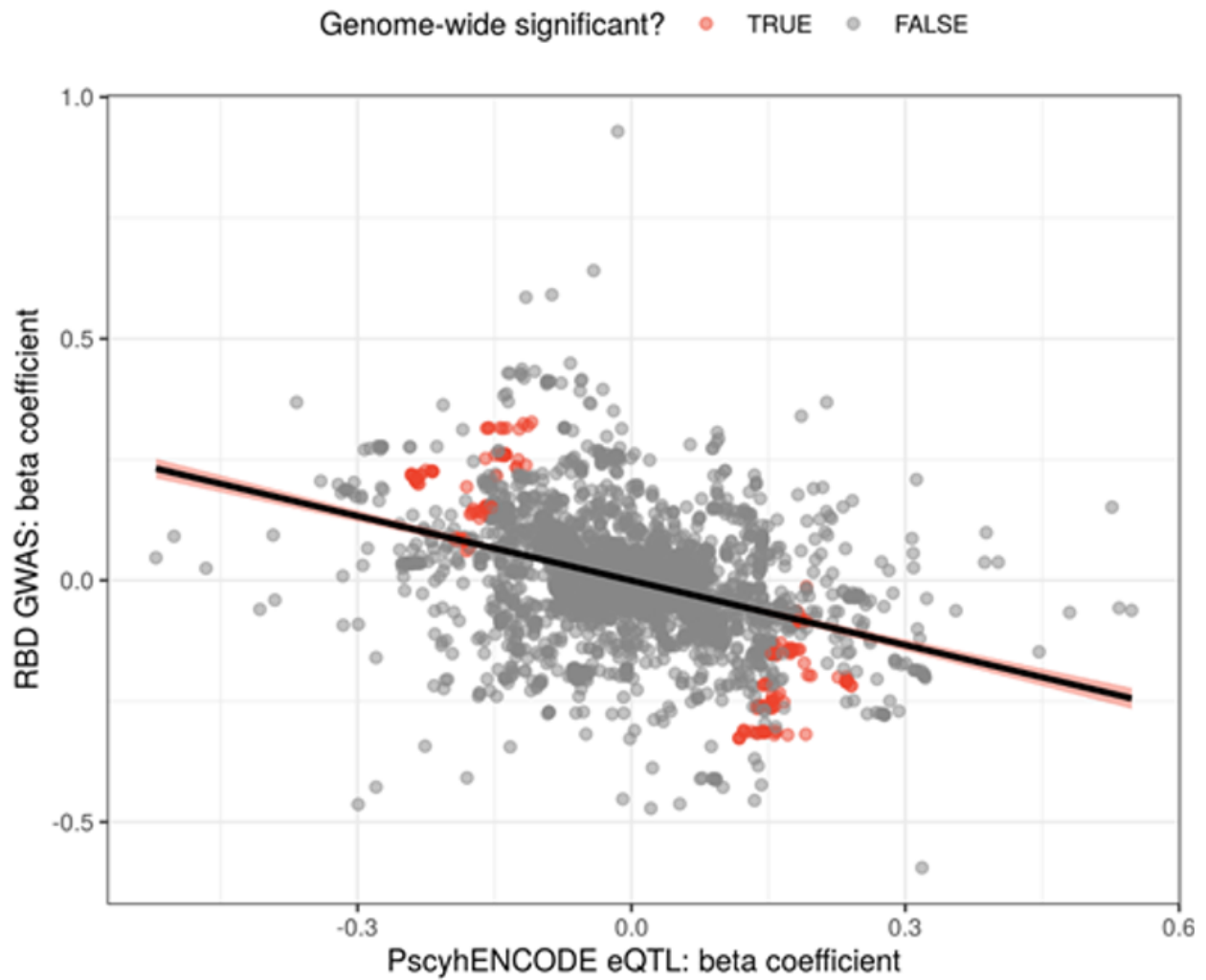


Supplementary Figure 2. Sensitivity analysis of *MMRN1* colocalization. Sensitivity analysis of colocalization between eQTLGen-derived eQTLs regulating *MMRN1* expression and RBD GWAS signals. Plot of prior (left) and posterior (right) probabilities for H0-H4 across varying p_{12} priors. Dashed vertical line indicates the value of p_{12} used in the initial analysis ($p_{12} = 5 \times 10^{-6}$). The green region in these plots show the region for which $PPH4 \geq 0.75$ would still be supported.



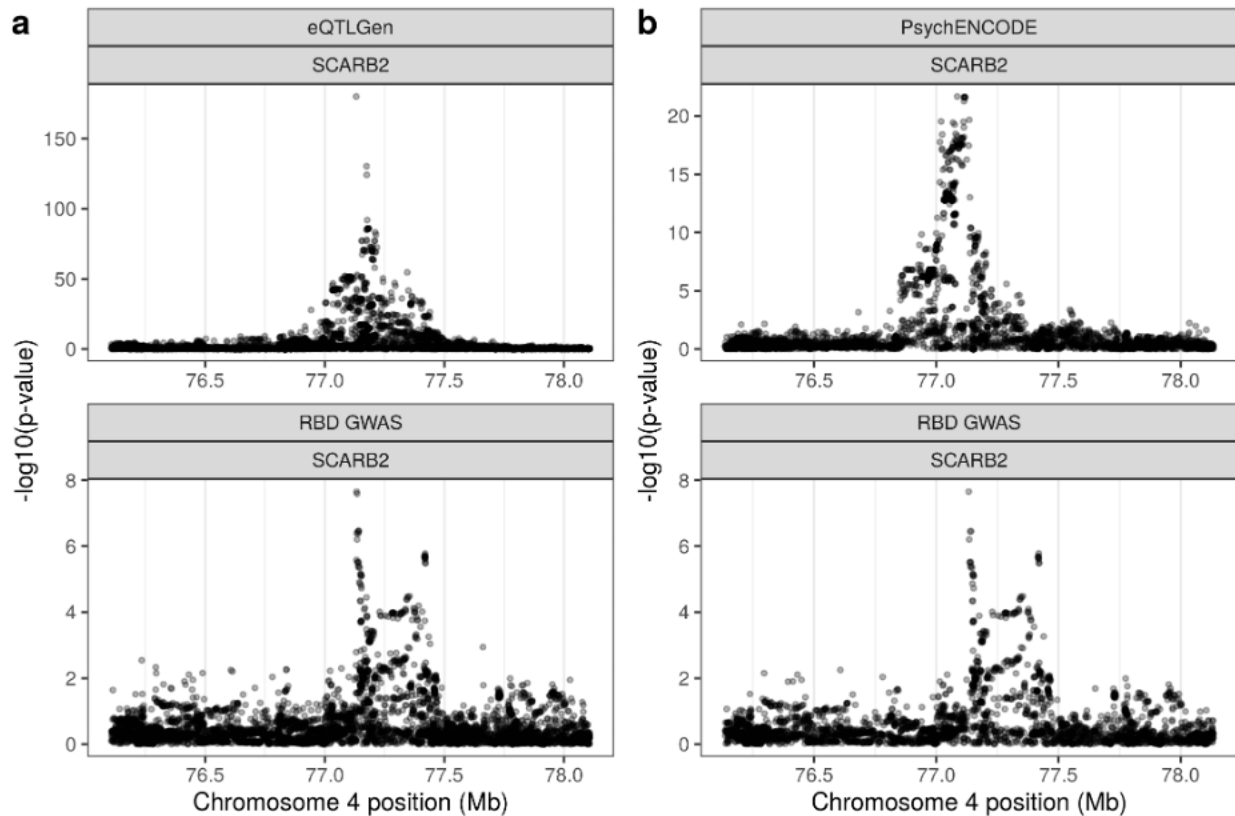
Supplementary Figure 3. Sensitivity analysis of *SNCA-AS1* colocalization.

Sensitivity analysis of colocalization between PscyhENCODE-derived eQTLs regulating *SNCA-AS1* expression and RBD GWAS signals. Plot of prior (left) and posterior (right) probabilities for H0-H4 across varying p_{12} priors. Dashed vertical line indicates the value of p_{12} used in the initial analysis ($p_{12} = 5 \times 10^{-6}$). The green region in these plots show the region for which $PPH4 \geq 0.75$ would still be supported.

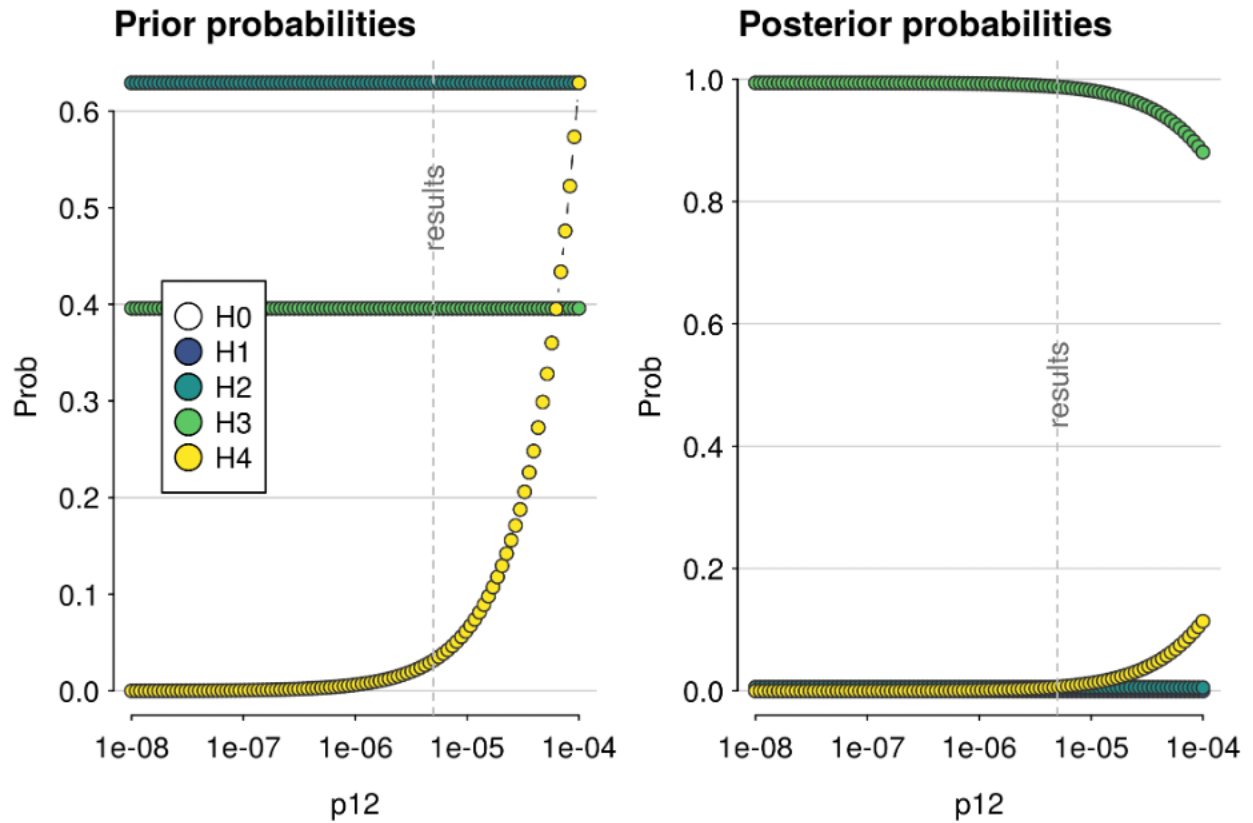


Supplementary Figure 4. Association of RBD risk with *SNCA-AS1* expression.

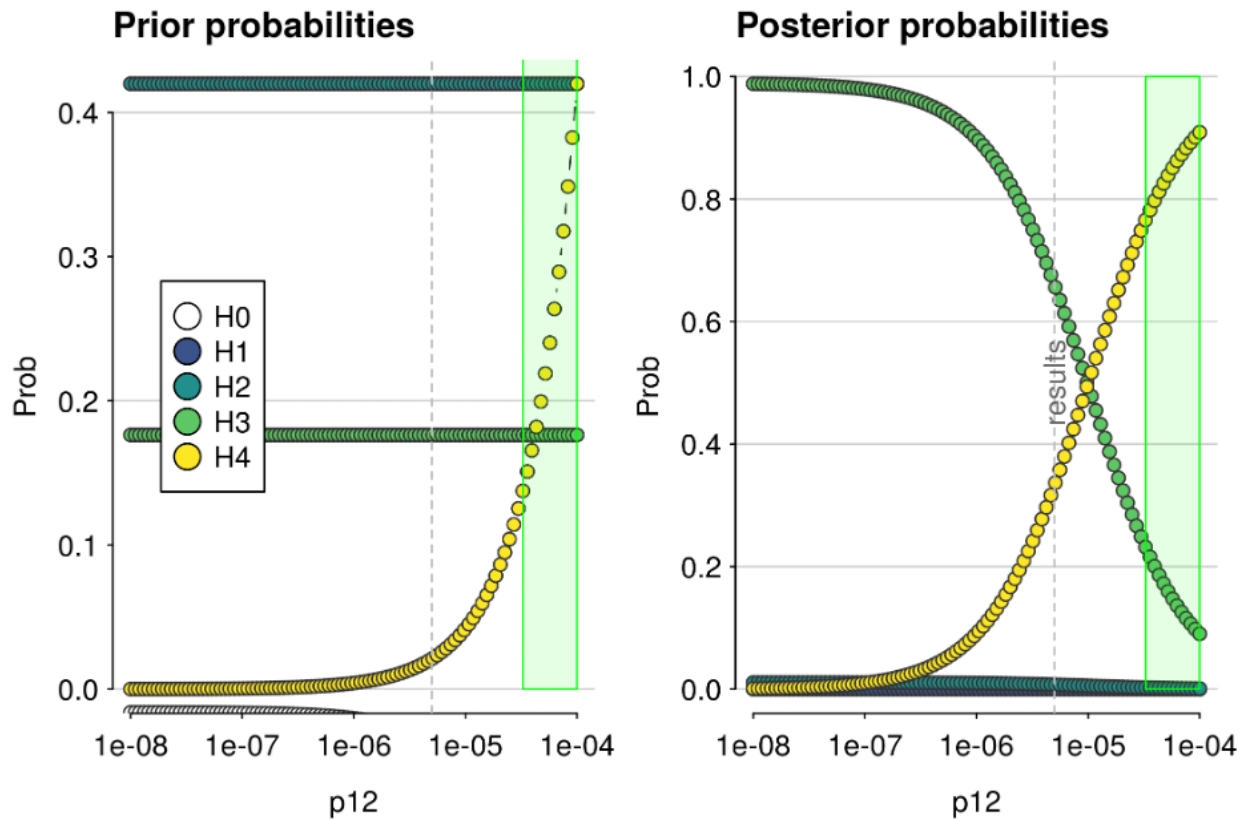
Scatterplot of beta coefficients for SNPs shared between the RBD GWAS and PsychENCODE eQTLs regulating *SNCA-AS1* expression. SNPs passing genome-wide significance ($p = 5 \times 10^{-8}$) in the RBD GWAS and/or PsychENCODE are indicated in red. The black line represents a linear model fitted for the beta coefficients from either dataset, with the 99% confidence interval indicated with a red fill.



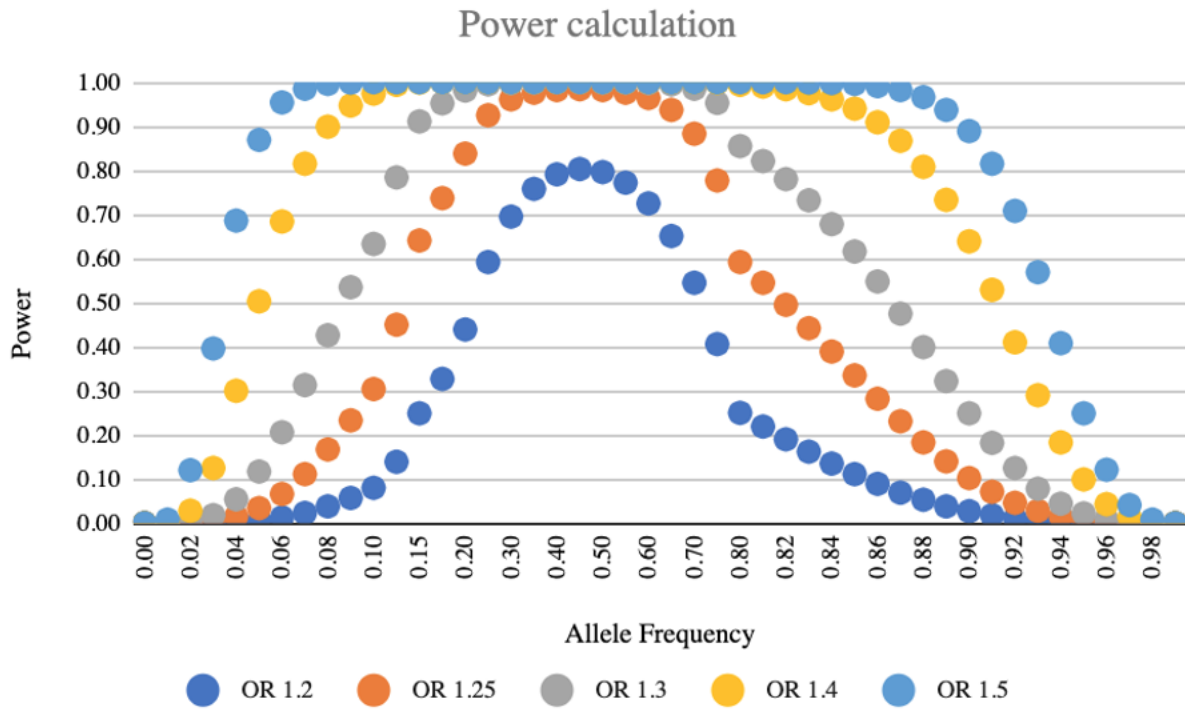
Supplementary Figure 5. Regional association plot for eQTL and RBD GWAS colocalization in the region surrounding *SCARB2*. Regional association plots for eQTL (upper pane) and RBD GWAS association signals (lower pane) in the region surrounding *SCARB2*, using eQTLs derived from (a) the eQTLGen meta-analysis of 31,684 blood samples from 37 cohorts (PPH3 = 0.99; PPH4 = 0.01) or (b) PsychENCODE's analysis of adult brain tissue from 1387 individuals (PPH3 = 0.66; PPH4 = 0.33). The x-axis denotes chromosomal position in hg19, and the y-axis indicates association p-values on a $-\log_{10}$ scale.



Supplementary Figure 6. Sensitivity analysis of *SCARB2* colocalization using eQTLGen-derived eQTLs. Sensitivity analysis of colocalization between eQTLGen-derived eQTLs regulating *SCARB2* expression and RBD GWAS signals. Plot of prior (left) and posterior (right) probabilities for H0-H4 across varying p_{12} priors. Dashed vertical line indicates the value of p_{12} used in the initial analysis ($p_{12} = 5 \times 10^{-6}$). The green region in these plots show the region for which $PPH4 \geq 0.75$ would still be supported.



Supplementary Figure 7. Sensitivity analysis of *SCARB2* colocalization using PsychENCODE-derived eQTLs. Sensitivity analysis of colocalization between PsychENCODE-derived eQTLs regulating *SCARB2* expression and RBD GWAS signals. Plot of prior (left) and posterior (right) probabilities for H0-H4 across varying p_{12} priors. Dashed vertical line indicates the value of p_{12} used in the initial analysis ($p_{12} = 5 \times 10^{-6}$). The green region in these plots show the region for which $PPH4 \geq 0.75$ would still be supported.



Supplementary Figure 8. Power calculations by effect size and allele frequency. The figure shows the power of our cohort to detect associations at GWAS significance level ($p < 5E-8$) according to the Genetic Association Study (GAS) Power Calculator.