

1 **COVID-19 mRNA Vaccination in Lactation: Assessment of adverse events and**
2 **vaccine related antibodies in mother-infant dyads**

3
4 Yarden Golan, Ph.D.¹, Mary Prah, M.D.^{2,3}, Arianna G. Cassidy, M.D.⁴, Caryl Gay Ph.D.
5 ⁵, Alan H.B. Wu, Ph.D.⁶, Unurzul Jigmeddagva, M.D.⁷, Christine Y. Lin⁴, Veronica J.
6 Gonzalez, M.D.⁴, Emilia Basilio, M.D, M.P.H⁴, Lakshmi Warriar⁸, Sirirak Buarpung,
7 D.V.M., Ph.D.⁴, Lin Li, M.D., Ph.D.⁴, Amy P. Murtha, M.D.⁴, Ifeyinwa V. Asiodu, Ph.D,
8 R.N.⁵, Nadav Ahituv, Ph.D.¹, Valerie J. Flaherman, M.D., M.P.H.², Stephanie L. Gaw,
9 M.D., Ph.D.^{4,7}

10

11 **Author Affiliations**

12 ¹ Department of Bioengineering and Therapeutic Sciences, University of California, San
13 Francisco, and Institute for Human Genetics, University of California, San Francisco,
14 California, United States of America.

15 ² Department of Pediatrics, University of California, San Francisco, California, United
16 States of America.

17 ³Division of Pediatric Infectious Diseases and Global Health, University of California,
18 San Francisco, California, United States of America.

19 ⁴ Division of Maternal-Fetal Medicine, Department of Obstetrics, Gynecology, and
20 Reproductive Sciences, University of California San Francisco, California, United States
21 of America.

22 ⁵ Department of Family Health Care Nursing, University of California, San Francisco,
23 California, United States of America.

24 ⁶ Department of Laboratory Medicine, University of California, San Francisco, California,
25 United States of America.

26 ⁷ Center for Reproductive Sciences, Department of Obstetrics, Gynecology, and
27 Reproductive Sciences, University of California San Francisco, California, United States
28 of America.

29 ⁸ Department of Medicine, University of California, San Francisco, California, United
30 States of America.

31 Corresponding author: Stephanie L. Gaw- Division of Maternal-Fetal Medicine,
32 Department of Obstetrics, Gynecology, and Reproductive Sciences, University of
33 California San Francisco, 513 Parnassus Ave, HSE16, Box 0556, San Francisco, CA
34 94143. Phone: 415.476.0535. Email: Stephanie.Gaw@ucsf.edu

35

36 **Conflict of interest:**

37 The authors have declared that no conflict of interest exists.

38 **Abstract:**

39 **Background:** Data regarding adverse events observed in the lactating mother-infant
40 dyad and their immune response to COVID-19 mRNA vaccination during lactation are
41 needed to inform vaccination guidelines.

42 **Methods:** From a prospective cohort of 50 lactating individuals who received mRNA-
43 based vaccines for COVID-19 (mRNA-1273 and BNT162b2), blood and milk samples
44 were collected prior to first vaccination dose, immediately prior to 2nd dose, and 4-10
45 weeks after 2nd dose. Symptoms in mother and infant were assessed by detailed
46 questionnaires. Anti-SARS-CoV-2 antibody levels in blood and milk were measured by
47 Pylon 3D automated immunoassay and ELISA. In addition, vaccine-related PEGylated
48 proteins in milk were measured by ELISA. Blood samples were collected from a subset
49 of infants whose mothers received the vaccine during lactation (4-15 weeks after
50 mothers' 2nd dose).

51 **Results:** No severe maternal or infant adverse events were reported in this cohort. Two
52 mothers and two infants were diagnosed with COVID-19 during the study period.
53 PEGylated proteins, were not found at significant levels in milk after vaccination. After
54 vaccination, levels of anti-SARS-CoV-2 IgG and IgM significantly increased in maternal
55 plasma and there was significant transfer of anti-SARS-CoV-2-Receptor Binding
56 Domain (anti-RBD) IgA and IgG antibodies to milk. Milk IgA levels after the 2nd dose
57 were negatively associated with infant age. Anti-SARS-CoV-2 IgG antibodies were not
58 detected in the plasma of infants whose mothers were vaccinated during lactation.

59 **Conclusions:** COVID-19 mRNA vaccines generate robust immune responses in
60 plasma and milk of lactating individuals without severe adverse events reported.

61

62

63 **Keywords:**

64 COVID-19, SARS-CoV-2, vaccine, lactation, immunity, antibodies, breastfeeding,
65 human milk, mRNA vaccine, passive immunity, side effects

66

67 **Introduction:**

68 An important benefit of human milk is the presence of IgA and IgG antibodies that
69 provide passive immunity to the infant (1,2). Anti-SARS-CoV-2 antibodies are present in
70 milk from lactating women who were infected with SARS-CoV-2 (3,4) or who received
71 COVID-19 mRNA vaccines (5–8). Specifically, high titers of anti-SARS-CoV-2 IgG were
72 reported after vaccination (6). The function of these antibodies in protection of infants
73 against COVID-19 is not fully understood. Recently, work has demonstrated that murine
74 pups can transfer IgG antibodies from ingested milk to their bloodstream, via enteric Fc
75 receptors (9); however, this phenomenon has not been demonstrated in humans. To
76 better understand the function and distribution of human milk antibodies and infant
77 immunization after maternal vaccination, we examined anti-SARS-CoV-2 antibody
78 levels in infant blood and stool. In addition, information is lacking on the potential
79 adverse effects of COVID-19 vaccination on lactating mothers and their infants, who
80 were excluded from initial clinical trials of mRNA vaccination (10). Many breastfeeding
81 individuals have concerns regarding the potential effects on their infant due to the lack
82 of data, leading to delayed vaccination or early cessation of breastfeeding (11).

83 In this study, we examined blood and milk samples from lactating mothers who received
84 a COVID-19 mRNA vaccine and their infants for the presence of anti- SARS-CoV2
85 antibodies, presence of PEGylated protein vaccine products, and self-reported vaccine-
86 related symptoms in order to address the gap of knowledge regarding vaccination
87 efficacy and safety in this population.

88

89 **Methods:**

90 *Study approval and study population.* The institutional review board of the University of
91 California San Francisco approved the study. Written, informed consent was obtained
92 from all study volunteers in the COVID-19 Vaccine in Pregnancy and Lactation
93 (COVIPAL) cohort study from December 2020 to June 2021. Eligible participants were
94 actively lactating, planning to receive any COVID-19 vaccine, and willing to donate
95 blood and/or milk samples.

96 *Clinical data collection.* Clinical data on vaccine side effects were collected through an
97 online questionnaire that was sent to participants 21 days or more after each vaccine
98 administration. Questionnaires were distributed using REDCap.

99 *Sample collection.* Maternal blood and milk samples were collected at three time points:
100 1) up to 1 day before the 1st dose (pre-vaccine); 2) on the day of and prior to
101 administration of the 2nd dose (after 1st dose); and between 4-10 weeks after the 2nd
102 dose (after 2nd dose). In some cases, additional milk samples were collected up to 31
103 days before the 1st dose, 24 hours after each dose, and weekly for up to 4 weeks after
104 the 2nd dose. Infant blood was collected by heel stick by trained study staff at 5-15
105 weeks after 2nd maternal vaccination.

106 *Milk processing.* Fresh human milk samples were self-collected by participants into
107 sterile containers at several time points before, during, and after vaccination. Milk
108 samples were either collected immediately by the study staff or frozen by mothers in
109 their home freezer as soon as possible after pumping. Samples were kept on ice during
110 transport from home to the lab for processing. Milk was aliquoted and stored in -80°C
111 until analyzed.

112 *Measurement of SARS-CoV-2 specific IgM and IgG in plasma samples.* Whole blood
113 was collected into tubes containing EDTA. Plasma was isolated from whole blood by
114 centrifugation and immediately cryopreserved at -80°C until analysis. Anti-SARS-CoV-2
115 plasma IgM and IgG antibodies were measured using the Pylon 3D automated
116 immunoassay system(12) (ET Healthcare, Palo Alto, CA). In brief, quartz glass probes
117 pre-coated with either affinity-purified goat anti-human IgM (IgM capture) or Protein G
118 (IgG capture) were dipped into diluted plasma samples, washed, and then dipped into
119 the assay reagent containing both biotinylated, recombinant spike protein receptor
120 binding domain (RBD) and nucleocapsid protein (NP). After washing, the probes were
121 incubated with Cy5-streptavidin (Cy5-SA) polysaccharide conjugate reagent, allowing
122 for cyclic amplification of the fluorescence signal. The background-corrected signal of
123 SARS-CoV-2 specific antibodies was reported as relative fluorescent units (RFU). IgM
124 and IgG measurements greater than 50 RFU were considered positive RFUs.

125 *Measurement of IgA and IgG by ELISA assay in milk.* After thawing, milk fat was
126 separated by cold centrifugation (10,000g for 10 min, 4°C). Milk supernatant samples
127 were diluted 1:2 in sample diluent buffer and were plated in duplicate on a 96-well plate
128 containing S1 spike protein RBD (Ray-Biotech, GA, USA, IEQ-CoVS1RBD-IgG-1 and
129 IEQ-CoVS1RBD-IgA-1). For monomeric IgA assays, samples were also plated in
130 duplicate on a second 96-well plate coated with human albumin to account for non-
131 specific binding. OD values for albumin were subtracted from the OD values for RBD.
132 Each plate contained seven wells of serial dilutions (1:3) of a positive control from an
133 inactivated serum sample which contains SARS-COV-2 S1 RBD protein human IgA
134 antibody (provided with the kit) and one blank negative control. The mean absorbance
135 of each sample was captured on an ELISA plate reader at 450 nm. Background values
136 (blank negative control) were subtracted from the albumin and RBD plates. Standard
137 controls were used to create a standard curve and determine the level of anti-RBD IgA
138 and IgG in unit/ml.

139 *Measurement of Polyethylene Glycol (PEGylated) proteins in human milk by ELISA.*
140 Milk supernatant was diluted 1:8 with the provided sample buffer and analyzed by
141 PEGylated protein ELISA kit (Enzo, Farmingdale, NY, USA). Seven wells of each plate
142 were loaded with serial dilutions (1:2) of mRNA-1273 or BNT162b2 to generate the
143 standard curve for each vaccine (**Figure S1**). In addition, vaccines were inoculated into
144 human milk samples at three different concentrations (33µl/ml, 3.3µl/ml and 0.33µl/ml)
145 and were analyzed separately to ensure the ability of the kit to detect the vaccine
146 PEGylated components in milk samples (**Figure S1**). Prism 9 (v 9.1.2) was used to
147 interpolate PEGylated proteins concentration in the samples based on OD values, using
148 a sigmoidal, four parameters logistic curve. Standard curve for mRNA-1273 or
149 BNT162b2 were used to analyse participant milk samples based on the vaccine

150 received. Of note, the assay measures all types of PEGylated proteins (if present in the
151 sample), and not only the vaccine PEGylated proteins.

152 *Statistics:* All data analyses were conducted using Stata statistical software (v14,
153 College Station, TX). Descriptive statistics included frequencies for categorical
154 variables, and means, standard deviations, medians, and ranges for continuous
155 variables. Group differences in categorical variables were analyzed using Fisher's exact
156 test, and group differences in continuous variables were analyzed using Mann-Whiney
157 U tests. McNemar tests were used to evaluate differences in symptom frequencies after
158 each vaccine dose. Spearman correlations was used to assess the magnitude of
159 associations between continuous variables. Non-parametric tests were used to
160 accommodate non-normal distributions and small group sizes.

161

162

163 **Results:**

164 ***Participant characteristics.*** During the study period, 50 participants answered all
165 study questionnaires, provided blood and/or milk samples, had an infant up to 18
166 months old and were included in this analysis. Two infants were diagnosed with COVID-
167 19 during this study (**Table S1**, infant of participants 1 and 2). One mother reported that
168 her infant had mild symptoms 1 week after the 2nd dose; this infant's vaccinated mother
169 had a negative test at the time of the infant's positive PCR test. A second infant had
170 positive plasma anti-SARS-CoV-2 IgG and IgA, despite the mother receiving the
171 vaccine postpartum and reported no known prior COVID-19 infection. The mother's
172 plasma was subsequently found to be positive to antibodies against SARS-CoV-2
173 nucleocapsid protein, indicating a likely natural asymptomatic SARS-CoV-2 infection
174 (further details in **Table S1**). Two mothers were positive for COVID-19 and are
175 presented in **Table S1** (participants 2 and 3); they were excluded from further analysis
176 of symptomatology. Cohort characteristics are presented in **Table 1**. Twenty-seven
177 female participants (mean age 35.7 years (\pm 3.9)) received the BNT162b2 vaccine
178 (Pfizer, 56%), and 21 received the mRNA-1237 (Moderna, 44%). The mean infant age
179 at mother's 1st dose was 5 months (\pm 3.9). All mothers continued to feed their infants
180 with milk at the time of the 2nd vaccination, and all except one continued up to the time
181 of follow up sample collection (4-10 weeks after 2nd dose). There were no significant
182 differences in maternal or infant characteristics by vaccine manufacturer.

183

184 ***Post vaccination symptoms.*** Self-reported symptoms after each vaccine dose are
185 presented in **Table 2**. Fever, chills, headache, joint pain, muscle aches or body aches,
186 and fatigue or tiredness were reported by significantly more participants after the 2nd
187 dose than after the 1st dose (**Table 2**). All 21 participants (100%) who received the
188 mRNA-1237 vaccine reported injection site symptoms, while only 21 (78%) of 27 BNT-
189 162b2 recipients reported injection site symptoms ($p=0.02$) (**Table 2**). Two mothers

190 reported slightly less milk production in the first 24-72 hours after vaccine doses (**Table**
191 **2**). With respect to infant symptoms, 12% of mothers reported at least one symptom
192 after the 1st maternal vaccine dose (primarily gastrointestinal symptoms and sleep
193 changes), and none reported an infant symptom after the 2nd dose (**Table 3**). In
194 summary, no severe adverse events (death, life threatening, hospitalization, disability)
195 for mothers or nursing infants were reported in this cohort after vaccination, and
196 reported symptoms resolved up to 72 hours after vaccination.

197 **PEG detection in human milk.** Polyethylene glycol (PEG) is present in the lipid
198 nanoparticles of the mRNA-based vaccines, and was reported to cause allergic reaction
199 after vaccination in rare cases (13,14). To address concerns about vaccine components
200 passing to milk after vaccination, we performed ELISA assays to measure PEG-ylated
201 proteins levels in milk after vaccination from 13 participants. PEG-ylated proteins were
202 measured in milk samples collected before the vaccine, and at various time points post-
203 vaccination (from 24 hours after 1st dose to 2 weeks after 2nd dose). Pre-vaccine PEG-
204 ylated proteins concentration did not significantly differ from PEG-ylated proteins levels
205 at any post-vaccine time point in either paired or unpaired comparisons (**Figure 1**).

206 **Anti-SARS-CoV-2 antibody levels in blood and milk samples after vaccination.** We
207 analyzed blood and milk samples from lactating individuals for anti-SARS-CoV-2
208 antibodies to measure immune response after vaccination. Maternal blood anti-SARS-
209 CoV-2 IgM and IgG antibodies increased significantly after the 1st dose (**Figure 2**). Anti-
210 SARS-CoV-2 IgM levels were not significantly higher 4-10 weeks after the 2nd dose
211 compared to samples collected after dose 1 (on the day of the 2nd dose) (**Figure 2A**
212 **and 2B**). In contrast, anti-SARS-CoV-2 IgG levels increased significantly after the 2nd
213 dose (P value <0.0001) when compared to samples collected immediately prior to the
214 2nd dose (**Figure 2C and 2D**). There was no significant difference in blood antibody
215 levels between participants who received the mRNA-1237 compared to the BNT-162b2
216 vaccine after dose 2 (determined by unpaired Mann-Whitney test).

217 We found significantly higher levels of IgA antibodies specific to SARS-CoV-2 RBD
218 protein in human milk samples collected after the 1st dose of both BNT-162b2 and
219 mRNA-1237 vaccines (**Figure 3A and 3B**). There was no significant increase in milk
220 anti-RBD IgA after the 2nd vaccination as compared to after dose 1 (**Figure 3A and**
221 **3B**). Twelve individuals (25%, BNT-162b2 n=7; mRNA-1237 n=5) did not have
222 detectable levels of anti-RBD IgA after either the 1st or 2nd dose (infants age at 1st
223 dose range 1-11 months). Milk anti-RBD IgG levels increased after the 1st dose of
224 vaccine and increased further after the 2nd dose (**Figure 3C and 3D**). There were no
225 significant differences in milk anti-RBD IgG levels between women who received BNT-
226 162b2 (**Figure 3C**) and mRNA-1237 (**Figure 3D**). These findings suggest that mRNA
227 vaccine results in a robust immune response leading to increased anti SARS-CoV-2
228 antibody levels in blood, but also in milk during lactation.

229 **Correlations between antibody levels, participant characteristics, and symptoms.**
230 In order to better understand the differences in antibody responses between individuals
231 in our cohort, we performed multiple correlation tests to determine whether IgG and IgA
232 antibodies levels correlated with timing of sample collection after vaccination (range 4-

233 10 weeks after 2nd dose), infant age at time of vaccination, or maternal BMI (**Table S2**).
234 Milk IgA (but not IgG) levels declined significantly as the infant age at time of
235 vaccination increased (**Figure 4A and 4B**). There was no significant correlation
236 between IgG and IgA levels and either the length of time after 2nd dose or maternal BMI
237 (**Table S2 and S3**). The levels of IgG and IgA antibodies induced in milk were
238 significantly correlated after 1st dose (**Figure 4C**), but not after the 2nd dose (**Figure**
239 **4D**). There was no correlation between the anti SARS-CoV-2 IgG levels in blood and
240 milk after 1st dose (**Figure 4E**), but there was a positive correlation between levels at 4-
241 10 weeks after 2nd dose (**Figure 4F**).

242 ***Plasma levels of anti-SARS-CoV-2 IgG are not detectable in infants after maternal***
243 ***vaccination during lactation.*** Although maternal IgG antibodies have been shown in
244 multiple studies to transfer to the infant *in utero*, there are little data to suggest that milk-
245 derived antibodies are similarly transferred to the infant blood circulation during
246 breastfeeding. To investigate whether passive immunity is conferred to the infant's
247 blood after maternal vaccination during lactation, we analyzed infant blood samples
248 from mothers who were vaccinated after delivery (n=8). Blood samples were collected
249 from these 8 infants (4 male, 4 female) at 68 days to 1 year of age (**Table S4**). Plasma
250 was tested for the presence of anti-SARS-CoV-2 IgG and IgM and anti-RBD IgA. We
251 evaluated infant blood samples collected at time frame of 4-10 weeks after 2nd dose as
252 this time point corresponded to high anti-SARS-CoV-2 IgG levels in mothers' blood and
253 milk (**Figure 2 and 3**). No antibodies were detected in the blood of nursing infants born
254 to mothers who were vaccinated postpartum (**Figure 5**), despite high IgG levels in
255 maternal blood and milk. Infants born to mothers who received both doses of vaccine
256 during pregnancy had detectable plasma anti-SARS-CoV-2 IgG levels at birth (15) and
257 at follow-up (data not showed). None of the follow-up infant blood samples had
258 detectable levels of anti-RBD IgA antibodies. These results demonstrate that
259 vaccination during lactation induces anti-SARS-CoV-2 antibodies in human milk, but do
260 not provides additional transfer of anti-SARS-CoV-2 antibodies to the infant blood, in
261 contrast to vaccination during pregnancy.

262 Lastly, we also investigated whether ingested antibodies could survive passage through
263 the infant gastrointestinal tract by testing infant stool for anti-SARS-CoV-2 antibodies
264 after vaccination (**Figure S2**) in one mother-infant dyad. We found that IgG (but not IgA)
265 was detected in infant stool samples and were correlated with maternal milk anti-SARS-
266 CoV-2 IgG levels.

267

268 **Conclusion:**

269 Our study provides a detailed report on patient symptoms and antibody responses of
270 the COVID-19 mRNA vaccines in lactating mothers. We found that the rates of reported
271 symptoms were similar to the CDC report from the V-Safe registry(16) but higher than
272 described in the clinical trials, although we do not have a non-lactating comparison
273 group. Importantly, there were no significant side effects noted in the infants of mothers
274 vaccinated during breastfeeding. Comparing the mRNA vaccines made by current
275 manufacturers, we found that lactating individuals may experience more vaccine-related
276 side effects after mRNA-1273 compared to BNT-162b2 vaccine; however, no
277 differences in immune response were observed between those vaccines.

278 It has recently been shown in a few studies that vaccine mRNA is not present in
279 milk samples after vaccination(17,18), or is only detected in very low levels in some
280 cases(19), providing reassurance that risks of exposure to the breastfed infant are
281 minimal. This study adds to the evidence that vaccine components are minimally
282 transferred to human milk. We found no significant increase in milk PEG-ylated protein
283 concentrations at various time points after vaccine administration in a subset of samples
284 analyzed in our cohort. We did observe one sample with higher ratio of PEG-ylated
285 proteins 24 hours post vaccination (**Figure 1**, patient 030). This sample had PEG-ylated
286 protein levels equivalent to 2.8µl/ml vaccine. However, we cannot confirm that the
287 increased PEG in this single sample was from the COVID-19 vaccine, as PEG exposure
288 may also be from other sources, such laxatives or ibuprofen. There was no increase in
289 protein PEG-ylation ratio after 2nd dose in the same individual, and no unusual
290 symptoms were reported in either the mother or her infant. Larger studies are needed to
291 increase our understanding of transfer of PEG into human milk, and potential effects
292 after ingestion by the infant. Although expert consensus states there is minimal or no
293 potential risk for the infant from maternal COVID-19 vaccination(20,21), the minor
294 symptoms that were reported (sleep changes and gastrointestinal symptoms) could be
295 further investigated in future studies to determine if they are related to vaccination. Our
296 findings also suggest that administration of maternal mRNA-based vaccine during
297 lactation did not lead to a detectable immune response in the infant blood, which further
298 suggests that the vaccine or its downstream products (e.g. spike protein) is not
299 transferred to the infant via milk and cannot trigger infant immune responses via that
300 route.

301 We also demonstrate that COVID-19 mRNA vaccination induces significant
302 increases in anti-SARS-CoV-2 IgM and IgG levels in lactating mothers' blood.
303 Consistent with previous studies that showed IgM levels plateaued 28 days after
304 COVID-19 infection (22), our results also demonstrated that dose 2 did not induce
305 significantly higher levels of IgM than was observed after dose 1. In contrast,
306 maternal blood IgG levels increased by 6-fold after the 2nd dose (compare to the levels
307 after the 1st dose), highlighting the importance of the 2nd dose to boost the antibody
308 response (23).

309 Due to the lack of data about vaccination during pregnancy, many pregnant
310 individuals were initially denied access to, declined, or were recommended to delay
311 vaccination until after pregnancy. As such, many mothers have waited until after

312 delivery to receive the vaccine. Although mothers vaccinated during lactation
313 transferred antibodies to their infant through milk, which is an important component of
314 mucosal immunity for the baby, there was no passive transfer of antibodies to the infant
315 bloodstream, as occurs if the mother is vaccinated during pregnancy. Correlates of
316 infant immune protection to COVID-19 are not yet well understood, however passive *in*
317 *utero* transfer of IgG to the infant is important in the prevention of a number of infections
318 including pertussis and influenza (24–26). Passively-transferred milk-derived IgA and
319 IgG likely provide partial mucosal immune protection in infants, as breastfeeding is
320 associated with lower risk of infections associated with mucosal defense, especially
321 against respiratory infections (27–29).

322 Two nursing infants in our cohort were infected with COVID-19 during the study
323 (one a week post maternal 2nd dose, and the second one between 1st and 2nd
324 maternal vaccine), indicating that milk antibodies cannot fully protect against SARS-
325 CoV-2 infection, especially at the time before full immune response is achieved in the
326 vaccinated mother, typically 2-3 weeks after the booster dose (**Figure 2D**). Further
327 studies are needed to determine the degree of protection conferred by IgA and IgG anti-
328 SARS-CoV-2 antibodies that are present in milk. Interestingly, we demonstrated for the
329 first time that anti-SARS-CoV-2 RBD IgG antibodies are detectable in stool samples
330 collected 4 and 8 weeks post maternal vaccine (**Figure S2**), which suggests that milk-
331 derived antibodies can persist in the infant gastrointestinal tract and provide protection
332 against viral infection via the digestive system (30). Further studies evaluating the
333 additive benefit of both transplacentally-derived maternal IgG, as well as milk-derived
334 IgA and IgG are needed to determine protection against COVID-19 in early infancy. Our
335 findings underscore the importance of determining the optimal timing of vaccine
336 administration to confer maximal protection against COVID-19 in infancy.

337 Twenty-five percent of women in our cohort had no detectable levels of anti-RBD
338 IgA in their milk after vaccination. Similar findings were reported in other studies (5,6),
339 suggesting that production and transfer efficiency vary between individuals. Our
340 analysis showed a negative correlation between infant age and milk anti-RBD IgA
341 levels, which might explain some of the variation in milk IgA levels observed between
342 different individuals. Ten out of the 12 participants who had no detectable anti-RBD IgA,
343 had infants older than 5.5 months at the time of sample collection. The relationship
344 between infant age, breastfeeding exclusivity, milk IgA antibodies, and optimal timing of
345 vaccination during lactation remains to be studied in detail.

346 Strengths of our study include the prospective design and comprehensive
347 symptom reporting by the vaccinated participants. We also report on longitudinal follow-
348 up of infant immune responses, which has not been previously described. Furthermore,
349 we included both BNT162b2 and mRNA-1273 vaccines and compared responses
350 between the two vaccine manufacturers. Limitations include the small sample size, and
351 that not all samples were able to be collected from all infant participants.

352 In summary, our study reports that no severe adverse events were noted in
353 lactating individuals or their breastfeeding infants after COVID-19 mRNA vaccination.
354 We demonstrated that human milk confers passive immunity to the infants, primarily
355 through mucosal immunity in the gastrointestinal tract provided by IgA and IgG in milk.

356 These results are important evidence to aid in counseling lactating individuals on the
357 safety and efficacy of the COVID-19 mRNA vaccines, and the potential benefits to both
358 the mother and infant.

359 **Author contribution:**

360 YG designed the study, conducted experiments, acquired data, analyzed data, and was
361 lead author of the manuscript. MP designed the study, conducted experiments, acquired
362 data, analyzed data, assisted with editing and writing the manuscript. AC recruited
363 participants, acquired data, and assisted with editing and writing the manuscript. CG
364 analyzed data, conducted statistical analysis assisted with editing the manuscript.
365 AHBW providing reagents and acquired data. UJ collected samples and conducted
366 experiments. CYL recruited participants and collected samples. VJG, LW, SB, LL
367 collected and process samples. EB collected and processed samples and assisted with
368 editing the manuscript. IVA assisted with study and questionnaires design and editing
369 and writing the manuscript. NA supervised the study and assisted in writing the
370 manuscript. APM provided funding and assisted with editing the manuscript. SLG and
371 VJF designed and supervised the study and assisted in writing the manuscript.

372

373

374

375

376 **References:**

- 377 1. Labayo HKM, Pajuelo MJ, Tohma K, Ford-Siltz LA, Gilman RH, Cabrera L, Mayta
378 H, Sanchez GJ, Cornejo AT, Bern C, et al. Norovirus-specific immunoglobulin A in
379 breast milk for protection against norovirus-associated diarrhea among infants.
380 *EClinicalMedicine* (2020) **27**:100561. doi:10.1016/j.eclinm.2020.100561
- 381 2. Sadeharju K, Knip M, Virtanen SM, Savilahti E, Tauriainen S, Koskela P,
382 Åkerblom HK, Hyöty H, Åkerblom HK, Eskola V, et al. Maternal antibodies in
383 breast milk protect the child from enterovirus infections. *Pediatrics* (2007)
384 **119**:941–946. doi:10.1542/peds.2006-0780
- 385 3. Fox A, Marino J, Amanat F, Krammer F, Hahn-Holbrook J, Zolla-Pazner S, Powell
386 RL. Robust and Specific Secretory IgA Against SARS-CoV-2 Detected in Human
387 Milk. (2020) doi:10.1016/j.isci.2020.101735
- 388 4. Demers-Mathieu V, Dung M, Mathijssen GB, Sela DA, Seppo A, Järvinen KM,
389 Medo E. Difference in levels of SARS-CoV-2 S1 and S2 subunits- and
390 nucleocapsid protein-reactive SIgM/IgM, IgG and SIgA/IgA antibodies in human
391 milk. *J Perinatol* (2020)1–10. doi:10.1038/s41372-020-00805-w
- 392 5. Perl SH, Uzan-Yulzari A, Klainer H, Asiskovich L, Youngster M, Rinott E,
393 Youngster I. SARS-CoV-2–Specific Antibodies in Breast Milk After COVID-19
394 Vaccination of Breastfeeding Women. *JAMA* (2021)2013–2014.
395 doi:10.1001/jama.2021.5782
- 396 6. Fox A, Norris C, Amanat F, Zolla-Pazner S, Powell RL. The vaccine-elicited
397 immunoglobulin profile in milk after COVID-19 mRNA-based vaccination is IgG-
398 dominant and lacks secretory antibodies. *medRxiv* (2021)2021.03.22.21253831.
399 doi:10.1101/2021.03.22.21253831
- 400 7. KELLY JC, CARTER EB, RAGHURAMAN N, NOLAN LS, GONG Q, LEWIS AN,
401 GOOD M. Anti-SARS-CoV-2 antibodies induced in breast milk after Pfizer-
402 BioNTech/BNT162b2 vaccination. *Am J Obstet Gynecol* (2021) **0**:
403 doi:10.1016/j.ajog.2021.03.031
- 404 8. Gray KJ, Bordt EA, Atyeo C, Deriso E, Akinwunmi B, Young N, Medina Baez A,
405 Shook LL, Cvrk D, James K, et al. COVID-19 vaccine response in pregnant and
406 lactating women: a cohort study. *Am J Obstet Gynecol* (2021) **0**:
407 doi:10.1016/j.ajog.2021.03.023
- 408 9. Zheng W, Zhao W, Wu M, Song X, Caro F, Sun X, Gazzaniga F, Stefanetti G, Oh
409 S, Mekalanos JJ, et al. Microbiota-targeted maternal antibodies protect neonates
410 from enteric infection. *Nature* (2020) **577**:543–548. doi:10.1038/s41586-019-
411 1898-4

- 412 10. Krause PR, Gruber MF. Emergency Use Authorization of Covid Vaccines —
413 Safety and Efficacy Follow-up Considerations. *N Engl J Med* (2020) **383**:e107.
414 doi:10.1056/nejmp2031373
- 415 11. Hall S. COVID vaccines and breastfeeding: what the data say. *Nature* (2021)
416 **594**:492–494. doi:10.1038/D41586-021-01680-X
- 417 12. Lynch KL, Whitman JD, Lacanienta NP, Beckerdite EW, Kastner SA, Shy BR,
418 Goldgof GM, Levine AG, Bapat SP, Stramer SL, et al. Magnitude and Kinetics of
419 Anti-Severe Acute Respiratory Syndrome Coronavirus 2 Antibody Responses and
420 Their Relationship to Disease Severity. *Clin Infect Dis* (2021) **72**:301–308.
421 doi:10.1093/cid/ciaa979
- 422 13. Sellaturay P, Nasser S, Ewan P. Polyethylene Glycol–Induced Systemic Allergic
423 Reactions (Anaphylaxis). *J Allergy Clin Immunol Pract* (2021) **9**:670–675.
424 doi:10.1016/J.JAIP.2020.09.029
- 425 14. Garvey LH, Nasser S. Anaphylaxis to the first COVID-19 vaccine: is polyethylene
426 glycol (PEG) the culprit? *BJA Br J Anaesth* (2021) **126**:e106.
427 doi:10.1016/J.BJA.2020.12.020
- 428 15. Beharier O, Plitman Mayo R, Raz T, Nahum Sacks K, Schreiber L, Suissa-Cohen
429 Y, Chen R, Gomez-Tolub R, Hadar E, Gabbay-Benziv R, et al. Efficient maternal
430 to neonatal transfer of antibodies against SARS-CoV-2 and BNT162b2 mRNA
431 COVID-19 vaccine. *J Clin Invest* (2021) doi:10.1172/JCI150319
- 432 16. Shimabukuro TT, Kim SY, Myers TR, Moro PL, Oduyebo T, Panagiotakopoulos L,
433 Marquez PL, Olson CK, Liu R, Chang KT, et al. Preliminary Findings of mRNA
434 Covid-19 Vaccine Safety in Pregnant Persons. *N Engl J Med* (2021)
435 doi:10.1056/nejmoa2104983
- 436 17. Mattar CN, Koh W, Seow Y, Hoon S, Venkatesh A, Dashraath P, Min Lim L, Ong
437 J, Lee R, Johana N, et al. Title page Addressing anti-syncytin antibody levels, and
438 fertility and breastfeeding concerns, following BNT162B2 COVID-19 mRNA
439 vaccination. *medRxiv* (2021)2021.05.23.21257686.
440 doi:10.1101/2021.05.23.21257686
- 441 18. Golan Y, Prah M, Cassidy A, Lin CY, Ahituv N, Flaherman VJ, Gaw SL.
442 Evaluation of Messenger RNA From COVID-19 BTN162b2 and mRNA-1273
443 Vaccines in Human Milk. *JAMA Pediatr* (2021)
444 doi:10.1001/jamapediatrics.2021.1929
- 445 19. Ming LowMRCPC J, Gu Y, Shu Feng Ng M, AminMBBS Z, Ye LeeMMed L,
446 Peng Mei Ng Y, Shunmuganathan O, Niu Y, Gupta R, Anantharajah Tambyah P,
447 et al. BNT162b2 vaccination induces SARS-CoV-2 specific antibody secretion into
448 human milk with minimal transfer of vaccine mRNA. *medRxiv*

- 449 (2021)2021.04.27.21256151. doi:10.1101/2021.04.27.21256151
- 450 20. STAFFORD IA, PARCHEM JG, SIBAI BM. The COVID-19 vaccine in pregnancy:
451 risks benefits and recommendations. *Am J Obstet Gynecol* (2021)
452 doi:10.1016/j.ajog.2021.01.022
- 453 21. Craig AM, Hughes BL, Swamy GK. Coronavirus disease 2019 vaccines in
454 pregnancy. *Am J Obstet Gynecol MFM* (2021) **3**:100295.
455 doi:10.1016/j.ajogmf.2020.100295
- 456 22. Liu X, Wang J, Xu X, Liao G, Chen Y, Hu CH. Patterns of IgG and IgM antibody
457 response in COVID-19 patients. *Emerg Microbes Infect* (2020) **9**:1269–1274.
458 doi:10.1080/22221751.2020.1773324
- 459 23. Polack FP, Thomas SJ, Kitchin N, Absalon J, Gurtman A, Lockhart S, Perez JL,
460 Pérez Marc G, Moreira ED, Zerbini C, et al. Safety and Efficacy of the BNT162b2
461 mRNA Covid-19 Vaccine. *N Engl J Med* (2020) **383**:2603–2615.
462 doi:10.1056/NEJMoa2034577
- 463 24. Dabrera G, Amirthalingam G, Andrews N, Campbell H, Ribeiro S, Kara E, Fry NK,
464 Ramsay M. A case-control study to estimate the effectiveness of maternal
465 pertussis vaccination in protecting newborn infants in England and Wales, 2012-
466 2013. *Clin Infect Dis* (2015) **60**:333–337. doi:10.1093/cid/ciu821
- 467 25. Amirthalingam G, Andrews N, Campbell H, Ribeiro S, Kara E, Donegan K, Fry
468 NK, Miller E, Ramsay M. Effectiveness of maternal pertussis vaccination in
469 England: An observational study. *Lancet* (2014) **384**:1521–1528.
470 doi:10.1016/S0140-6736(14)60686-3
- 471 26. Puck JM, Glezen WP, Frank AL, Six HR. Protection of infants from infection with
472 influenza A virus by transplacentally acquired antibody. *J Infect Dis* (1980)
473 **142**:844–849. doi:10.1093/infdis/142.6.844
- 474 27. Wright AL, Holberg CJ, Martinez FD, Morgan WJ, Taussig LM. Breast feeding and
475 lower respiratory tract illness in the first year of life. Group Health Medical
476 Associates. *BMJ* (1989) **299**:946–949. doi:10.1136/bmj.299.6705.946
- 477 28. Tarrant M, Kwok M, Lam T, Epidemiology GL-, 2010 undefined. Breast-feeding
478 and childhood hospitalizations for infections. *JSTOR*
- 479 29. Oddy WH, Sly PD, De Klerk NH, Landau LI, Kendall GE, Holt PG, Stanley FJ.
480 Breast feeding and respiratory morbidity in infancy: A birth cohort study. *Arch Dis*
481 *Child* (2003) **88**:224–228. doi:10.1136/adc.88.3.224
- 482 30. Ma C, Cong Y, Zhang H. COVID-19 and the Digestive System. *Am J*
483 *Gastroenterol* (2020) **115**:1003–1006. doi:10.14309/ajg.0000000000000691

484

485

486 **Funding:**

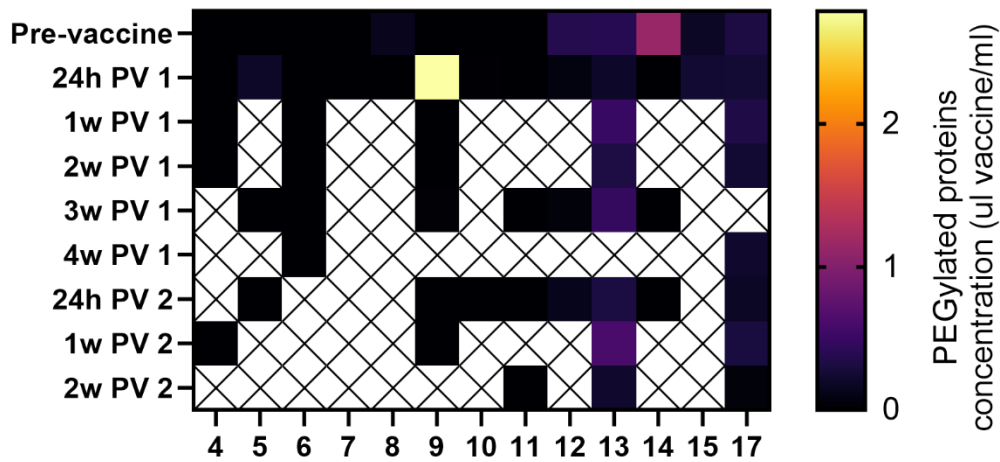
487 These studies were supported by the Marino Family Foundation (to M.P), the National
488 Institutes of Health (NIAID K23AI127886 to M.P. and NIAID K08AI141728 to S.L.G.),
489 the Krzyzewski Family (to A.P.M. and S.L.G), the Weizmann Institute of Science -
490 National Postdoctoral Award Program for Advancing Women in Science (to Y.G.), the
491 International Society for Research In Human Milk and Lactation (ISRHML) Trainee
492 Bridge Fund (to Y.G.), and of the Human Frontier Science Program (to Y.G.).

493

494

495

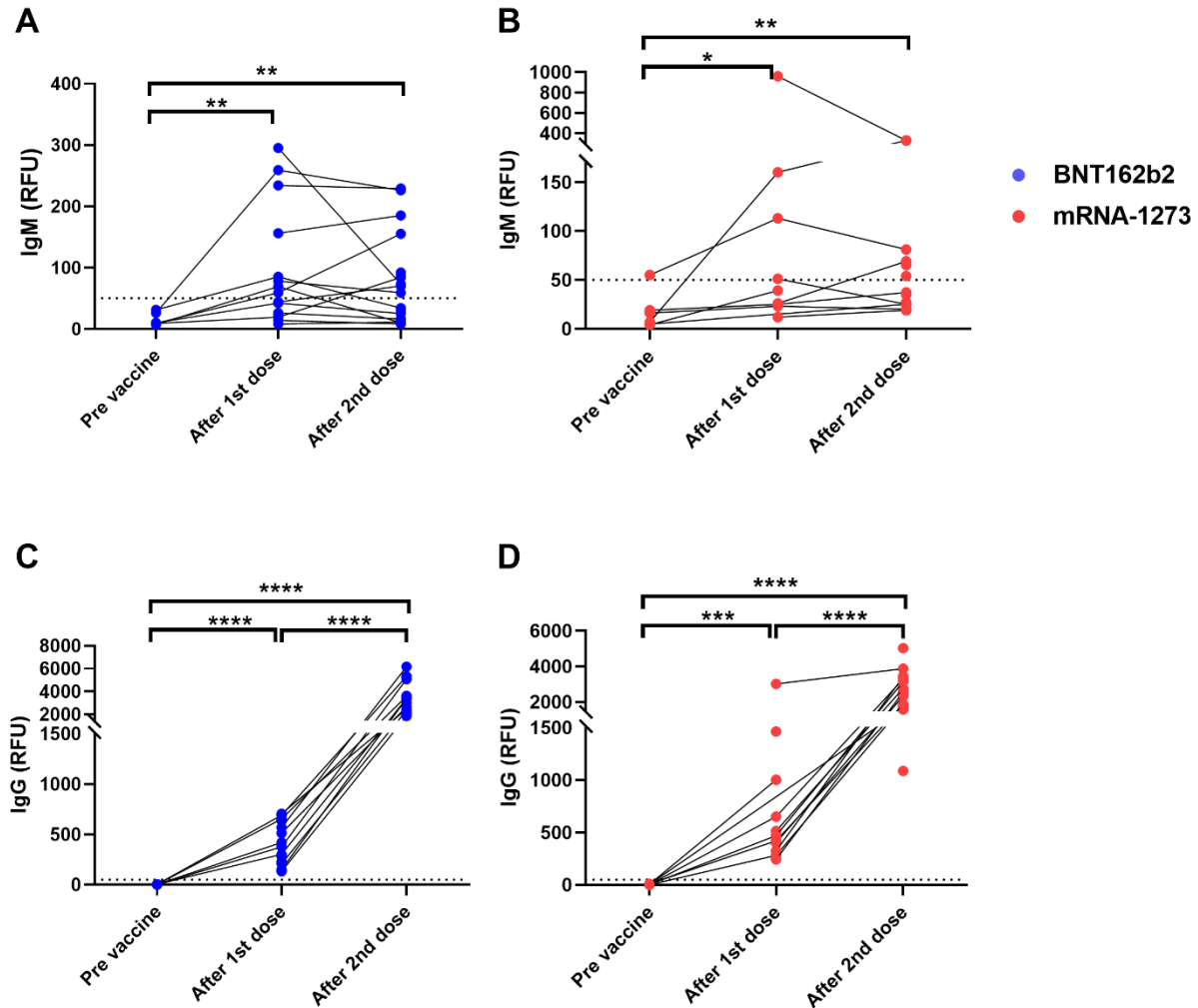
496 **Figures:**



497

498 **Figure 1: Detection of vaccine PEG in human milk samples.** PEGylated protein
499 concentration in each sample were interpolated based on vaccine standard curves
500 (Figure S1). No significant differences were observed between samples collected at any
501 of the post vaccine (PV) time points and the pre-vaccine samples (paired and unpaired
502 two-tailed t-tests). Y axes represent time of sample collection, as hours (h) or weeks (w)
503 Post vaccine 1 (PV 1), or Post vaccine 2 (PV 2).

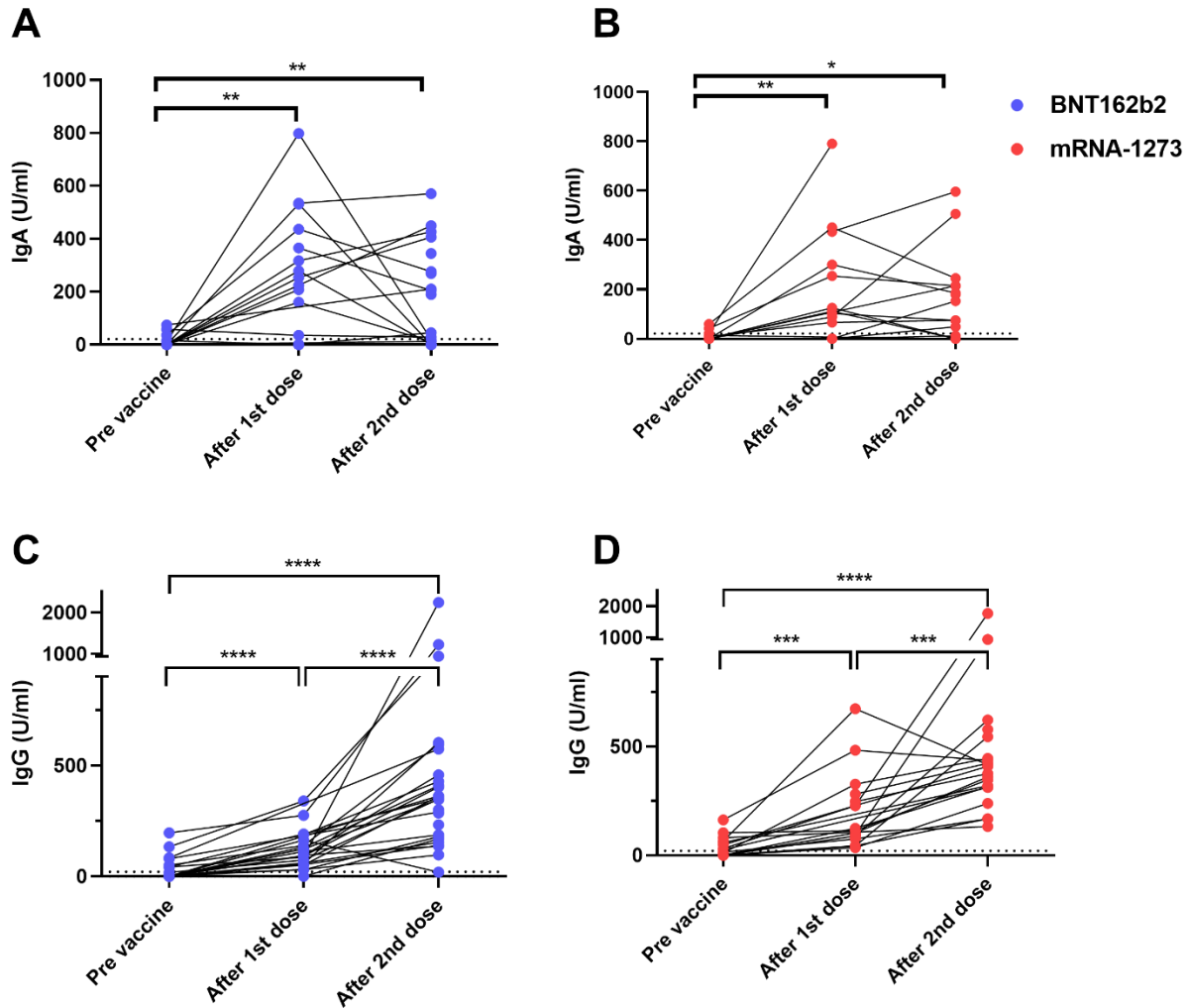
Plasma anti-SARS-CoV2 antibodies



504

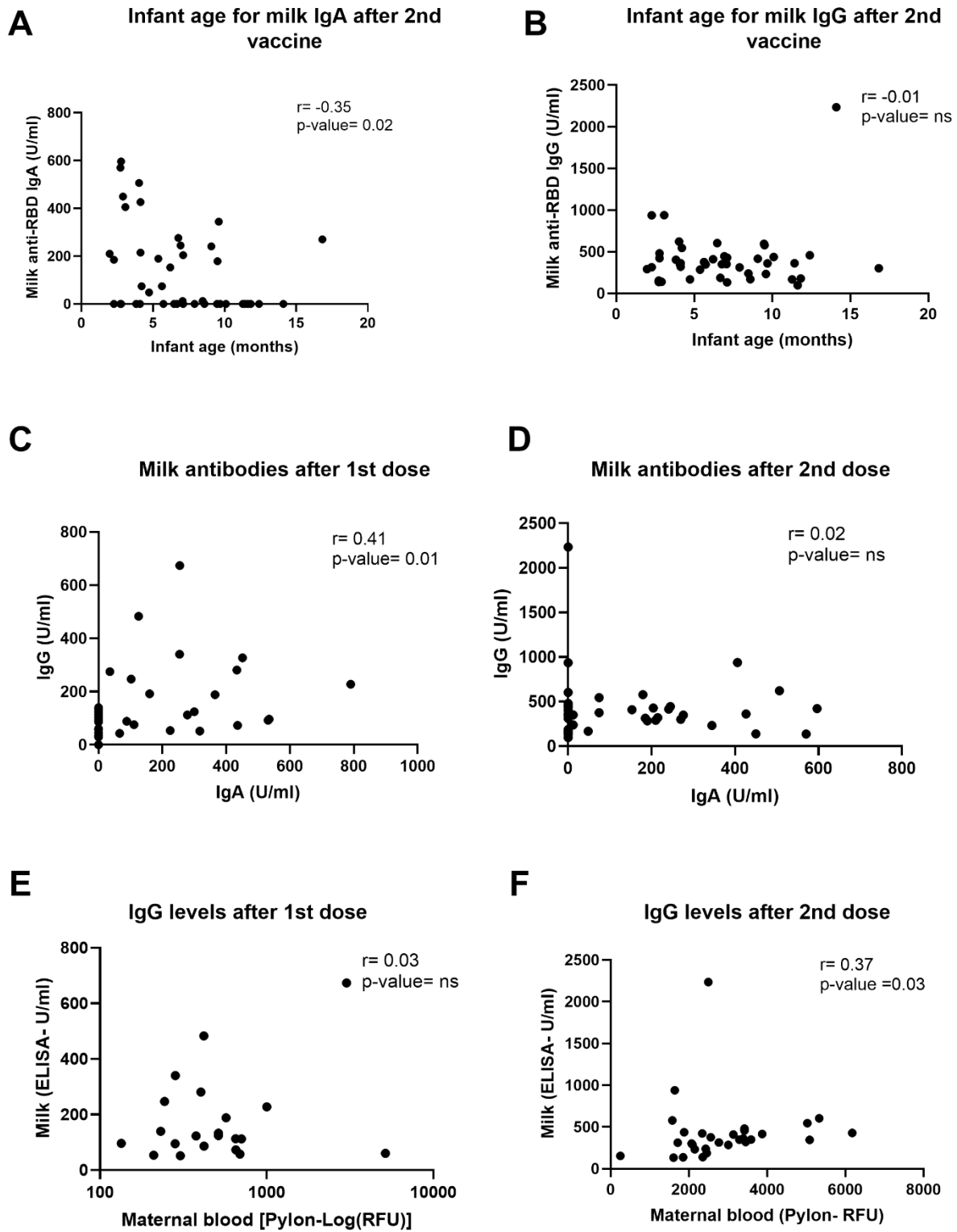
505 **Figure 2: Elevated levels of plasma anti-SARS-CoV2 antibodies in COVID-19**
506 **mRNA vaccinated lactating individuals.** Anti-SARS-CoV2 IgM levels in plasma of
507 lactating individuals receiving BNT-162b2 (n=19) (A) and mRNA-1273 (n=13) (B)
508 COVID-19 vaccines (RFU- relative fluorescent units, dashed line represents positive
509 cut-off >50 RFU). Anti-SARS-CoV2 IgG levels in plasma of lactating individuals
510 receiving BNT-162b2 (C) and mRNA-1273 (D) COVID-19 vaccines. After 1st dose
511 samples were collected on the day of the second vaccine, and after 2nd dose samples
512 were collect 4-10 weeks post 2nd dose. Asterisks represent p-values: *= p-value <0.05,
513 **= p-value <0.01, ***= <0.001, ****= <0.0001 as determined by unpaired Mann-Whitney
514 test.

Milk anti-RBD antibodies (ELISA)



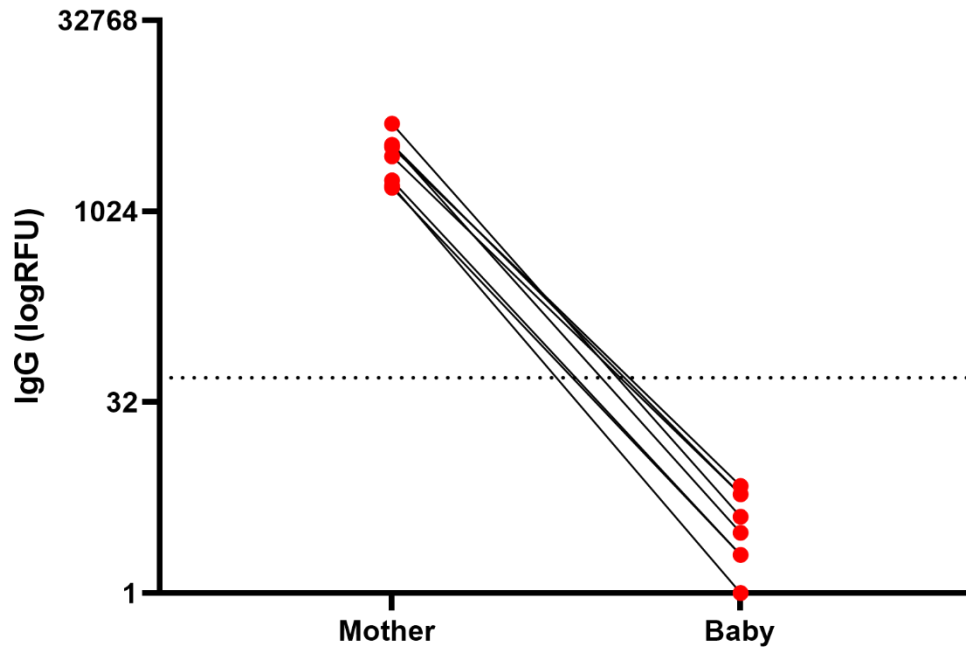
515
516 **Figure 3: Elevated levels of milk anti-SARS-CoV2 IgA antibodies in COVID-19**
517 **mRNA vaccinated lactating individuals.** Milk samples from individuals receiving BNT-
518 162b2 (n=27) (A) and mRNA-1273 (n=21) (B) COVID-19 vaccines were analyzed for
519 anti-SARS-CoV2 IgA antibodies using ELISA at various time points as indicated on the
520 X axis. After 1st dose samples were collected on the day of the second vaccine, and
521 after 2nd dose samples were collect 4-10 weeks post 2nd dose. Milk anti-SARS-CoV2
522 IgG levels were measured using ELISA in milk samples from individuals receiving BNT-
523 162b2 (n=27) (C) or mRNA-1273 (n=21) (D). Asterisks represent p-values: * = p-value
524 < 0.05, ** = p-value < 0.01, *** = < 0.001 as determined by unpaired Mann-Whitney test.
525 Dashed line represents positive cut-off >21 U/ml.

526



527

528 **Figure 4: Correlations between milk antibodies, blood antibodies and infant age.** Two-
529 tailed Spearman correlation was used to correlate milk IgA (A) and IgG (B) levels (Y axis) and
530 infant age (X axis) 4-10 weeks after the 2nd dose administration (n=30). In addition, two-tailed
531 Spearman correlation was used to correlate milk IgG (Y axis) and milk IgA levels (X axis) on the
532 day of 2nd dose administration(C), 21-28 days after 1st dose (n=35) and and 4-10 weeks after
533 2nd dose (D). We also tested correlation between milk (Y axis) and maternal plasma (X axis)
534 IgG levels at day of 2nd dose (E) and 4-10 weeks after the 2nd dose administration (F) (n=30).
535 Semi-partial correlations were used to assess relationships between variables while controlling
536 for the effects of other relevant variables.



537

538 **Figure 5: Infants anti-SARS-CoV2 IgG levels after maternal vaccination during**
539 **lactation.** IgG levels were measured in blood samples of infants and mothers 61 days
540 to 1 year postpartum, 61-129 days after 1st maternal vaccine administration. Maternal
541 and infant samples were collected in the same week (except in one case in which the
542 maternal sample was collected 18 days prior to the infant sample). (RFU- relative
543 fluorescent units, dashed line represents positive cut-off >50 RFU). Sample
544 characteristics and individual antibodies levels are present in **Table S4**.

545

546 Tables:

547 **Table 1. Sample characteristics overall and by vaccine manufacturer**

Sample Characteristics	Full Cohort (n=48, 100%)	BNT162b2 (n=27, 56%)	mRNA-1237 (n=21, 44%)
<i>Maternal characteristics</i>			
Maternal age, years			
Median (min, max)	35 (27, 46)	35 (30, 45)	35 (27, 46)
Race/ethnicity, % (n)			
Asian	31% (15)	30% (8)	33% (7)
Black or African American	2% (1)	4% (1)	0% (0)
White/Caucasian	59% (28)	55% (15)	62% (13)
Other (Arab)	2% (1)	0% (0)	5% (1)
More than 1 race/ethnicity (White+Latina/Asian/Middle Eastern)	6% (3)	11% (3)	0% (0)
Highest level of education completed			
Some college	2% (1)	0% (0)	5% (1)
College graduate	17% (8)	19% (5)	14% (3)
Advanced degree	81% (39)	81% (22)	81% (17)
Work in health care?			
Yes, providing direct patient care	58% (28)	52% (14)	67% (14)
Yes, but not in direct patient care	19% (9)	15% (4)	24% (5)
No	23% (11)	33% (9)	9% (2)
Pre-Pregnancy Body Mass Index			
Median (min, max)	23.4 (19.1, 37.5)	23.4 (19.1, 35.9)	22.8 (19.6, 37.5)
Number of children			
1	40% (19)	41% (11)	38% (8)
2	46% (22)	41% (11)	52% (11)
3	12% (6)	15% (4)	10% (2)
4	2% (1)	3% (1)	0% (0)
Duration of most recent pregnancy, weeks			
Median (min, max)	39.0 (33.9, 41.1)	39.1 (33.9, 41.0)	39.0 (37.4, 41.1)
<i>Infant characteristics</i>			
Infant age at maternal 1st dose, months			
Median (min, max)	4.7 (0.1, 17.2)	4.8 (0.2, 15.2)	4.6 (0.1, 17.2)
Sex, % (n)			
Male	60% (29)	67% (18)	52% (11)
Female	40% (19)	33% (9)	48% (10)

Exclusively breastfeeding (and no solids)			
Yes	23% (11)	22% (6)	24% (5)
No	77% (37)	78% (21)	76% (16)
<i>Days after vaccine that symptoms were assessed</i>			
Dose 1			
Mean (SD)	78.7 (31.8)	78.3 (35.4)	79.2 (27.4)
Median (min, max)	81 (18, 154]	78 (18, 154)	86 (26, 117)
Dose 2			
Mean (SD)	59.6 (25.1)	62.6 (28.3)	55.8 (20.2)
Median (min, max)	58.5 (28, 133)	57 (29, 133)	60 (28, 89)

548 Note: None of the characteristics above differed significantly by vaccine manufacturer.

549 Abbreviations: Standard deviation (SD), minimum (min), maximum (max)

Table 2: Symptoms after each vaccine dose

Symptoms	Full Cohort:			After 1st dose			After 2nd dose		
	1st dose	2nd dose	P-value ^a	BNT162b2	mRNA-1237	p-value ^b	BNT162b2	mRNA-1237	p-value ^b
	n=48			n=27	n=21		n=27	n=21	
Injection site symptoms, % (n)									
Any injection site symptoms	88% (42)	88% (42)	>0.99	78% (21)	100% (21)	0.02	78% (21)	100% (21)	.02
Pain	88% (42)	85% (41)	0.71	78% (21)	100% (21)	0.02	78% (21)	95% (20)	0.12
Redness	4% (2)	10% (5)	0.08	0% (0)	10% (2)	0.19	4% (1)	19% (4)	0.15
Swelling	17% (8)	17% (8)	>0.99	7% (2)	29% (6)	0.12	11% (3)	24% (5)	0.27
Itching	4% (2)	4% (2)	>0.99	4% (1)	5% (1)	>.99	4% (1)	5% (1)	>.99
Rash around injection site	2% (1)	4% (2)	0.32	0% (0)	5% (1)	0.44	0% (0)	10% (2)	0.19
Generalized symptoms, % (n)									
Any general symptoms	48% (23)	92% (44)	<0.001	44% (12)	52% (11)	0.77	85% (23)	100% (21)	0.12
Fever	12% (6)	62% (30)	<0.001	19% (5)	5% (1)	0.21	52% (14)	76% (16)	0.13
Chills	8% (4)	48% (23)	<0.001	11% (3)	5% (1)	0.62	37% (10)	62% (13)	0.14
Headache	21% (10)	67% (32)	<0.001	11% (3)	33% (7)	0.08	56% (15)	81% (17)	0.07
Joint pain	8% (4)	31% (15)	0.002	7% (2)	10% (2)	>0.99	30% (8)	33% (7)	>0.99
Muscle/body aches	21% (10)	69% (33)	<0.001	30% (8)	10% (2)	0.15	59% (16)	81% (17)	0.13

Fatigue or tiredness	44% (21)	81% (39)	<0.001	41% (11)	48% (10)	0.77	67% (18)	100% (21)	0.003
Nausea	4% (2)	12% (6)	0.10	4% (1)	5% (1)	>0.99	7% (2)	19% (4)	0.38
Vomiting	0% (0)	0% (0)	---	0% (0)	0% (0)	---	0% (0)	0% (0)	----
Diarrhea	4% (2)	4% (2)	>0.99	4% (1)	5% (1)	>0.99	0% (0)	10% (2)	0.19
Abdominal pain	2% (1)	0% (0)	0.32	0% (0)	5% (1)	0.44	0% (0)	0% (0)	----
Rash not near injection site	0% (0)	0% (0)	---	0% (0)	0% (0)	---	0% (0)	0% (0)	----
Lump/swelling in breast (same side as injection)	0% (0)	2% (1)	0.32	0% (0)	0% (0)	---	4% (1)	0% (0)	>0.99
Lump/swelling in breast (opposite side as injection)	0% (0)	0% (0)	---	0% (0)	0% (0)	---	0% (0)	0% (0)	----
Mastitis	2% (1)	0% (0)	0.32	0% (0)	5% (1)	0.44	0% (0)	0% (0)	----
Decrease in milk supply	2% (1)	2% (1)	>0.99	0% (0)	5% (1)	0.44	0% (0)	5% (1)	0.44

551 ^a McNemar's test; ^b Fisher's Exact test

552

553 **Table 3. Infant symptoms reported after maternal vaccination (write-in only)**

INFANT SYMPTOMS	% (n)	Vaccine
After 1st vaccine dose		
None / no changes / blank	88% (42)	
<i>“My baby seemed a little tired.”</i>	2% (1)	BNT162b2
<i>“He started pooping a lot! And it was more sour smelling diarrhea like poops. I don't know if there is any correlation”</i>	2% (1)	BNT162b2
<i>“It could have been a fluke, but both my infant and I slept through the night for the first time the night after I received the 1st dose of the vaccine.”</i>	2% (1)	BNT162b2
<i>“He had some diaper rash, but likely unrelated”</i>	2% (1)	BNT162b2
<i>“Rash on the face / worsening of baby acne”</i>	2% (1)	mRNA-1237
<i>“Disrupted sleep, waking at night when he usually doesn't. More fussy than normal.”</i>	2% (1)	mRNA-1237
After 2nd vaccine dose		
None / no changes / blank	100% (48)	

554

555