

1 **Title**

2 Morphological alternations of intracerebral arterial during middle age: a community
3 cohort study

4 **Authors**

5 Boyu Zhang^{1,2}, Zidong Yang^{1,2}, Jing Li³, Bei Wang^{1,2}, Huazheng Shi⁵, He Wang^{1,2,4*},
6 Yuehua Li^{3*}

7 ¹Institute of Science and Technology for Brain-Inspired Intelligence, Fudan University,
8 Shanghai, China

9 ²Key Laboratory of Computational Neuroscience and Brain-Inspired Intelligence
10 (Fudan University), Ministry of Education, China

11 ³Department of Radiology, Shanghai Jiao Tong University Affiliated Sixth People's
12 Hospital, Shanghai Jiao Tong University School of Medicine, Shanghai, China

13 ⁴Human Phenome Institute, Fudan University, Shanghai, China

14 ⁵Shanghai Universal Medical Imaging Diagnostic Center, Shanghai, China

15 **Correspondence to:**

16 Prof He Wang,

17 Institute of Science and Technology for Brain-Inspired Intelligence, Fudan University,
18 Shanghai 200433, China

19 Email: hewang@fudan.edu.cn

20 Prof Yuehua Li,

21 Department of Radiology, Shanghai Jiao Tong University Affiliated Sixth People's
22 Hospital, Shanghai Jiao Tong University School of Medicine, Shanghai 200233, China

23 Email: liyuehua77@sjtu.edu.cn

24

25 **Morphological alternations of intracerebral arterial during middle age: a**
26 **community cohort study**

27 **Abstract**

28 **Background**

29 Ample evidence has suggested that vascular modifications are associated with aging.
30 To expand previous understanding of age-related vascular changes, we examined the
31 association between aging and cerebrovascular morphologies.

32 **Methods**

33 1176 participants aged 35 to 75 years recruited from Shanghai, China were included in
34 this study. Cerebrovascular morphological features comprising arterial branch density,
35 radius, and tortuosity were quantified using three-dimensional magnetic resonance
36 angiography. Linear regression was used to examine the association between age and
37 vasculature features.

38 **Results**

39 Age was found to be a significant predictor for cerebrovascular morphological
40 alterations after adjusting for vascular risk factors. However, after dividing subjects into
41 subgroups based on their age, aging was found to be significantly correlated with all
42 three morphometric features only in the 45-54 subgroup after adjusting for the other
43 vascular risk factors. Smoking gives rise to a more rapid age-related changes in vascular
44 morphologies, while alcohol consumption could decelerate those age-related alterations.

45 **Conclusions**

46 Rapid alternations in all three morphological features assessed have been noticed to be
47 associated with aging in the 45-54 subgroup, suggesting the potential importance of the
48 5th decade for early preservation method of vascular aging.

49 **Funding**

50 National Natural Science Foundation of China.

51

52 **Introduction**

53 The power-hungry nature of the human brain requires a consistent supply of oxygen
54 and nutrients, which is dependent on the structural and functional integrity of the

55 intracranial vasculature, to maintain its normal functioning (Zhang and Raichle 2010).
56 Indeed, the cerebral vasculature has been implicated in many dementing diseases, such
57 as vascular dementia and Alzheimer’s disease (AD) (Leeuwis et al. 2017, Alber et al.
58 2019). Several previous studies have suggested a synergistic relationship between
59 cerebrovascular dysfunctions and the neurological symptoms (Silvestrini et al. 2006,
60 Kalaria 2002). For instance, reduced cerebral blood flow (CBF) has been implicated in
61 cognitive decline (Swan et al. 1998, Leeuwis et al. 2017). Exposure to cerebrovascular
62 risk (CVR) could cause cerebral vascular system impairments. In particular, elevated
63 blood pressure is associated with the remodeling of both small and large arteries, which
64 paves the way for the impairment of the brain functions (Laurent and Boutouyrie 2015).
65 Among the common CVR factors, aging has been recognized to pose a significant risk
66 for the development of cardiovascular diseases, and its effect on the cerebral vascular
67 system deserves more attention (D’Agostino et al. 2008).
68 Association between advanced age and a general reduction in CBF in normal subjects
69 has been reported earlier (Melamed et al. 1980). During the past few years, clinical
70 studies have revealed that major vascular modifications, including generalized
71 endothelial dysfunction and central arterial stiffness, in the cerebral arteriolar system
72 also transpire with aging (Xu et al. 2017, Donato, Machin and Lesniewski 2018). With
73 the advancements in time-of-flight magnetic resonance angiography (TOF MRA), age-
74 related intracranial arterial morphological alterations, including reduced vessel branch
75 number and increased mean tortuosity have been reported (Chen et al. 2019, Bullitt et
76 al. 2010). Such alterations have recently been implicated in cerebral small vessel
77 disease (CSVD), a brain disease that is believed to be associated with a wide range of
78 cognitive disorders including nearly a half of dementias, making those promising
79 markers for brain damage and cognitive decline (Banerjee et al. 2016, Zhang et al.
80 2021).
81 Moreover, extensive research has focused on midlife since exposure to CVR factors
82 during midlife was reported to influence cognitive outcomes later on significantly
83 (Walker et al. 2019, Kloppenborg et al. 2008, Swan et al. 1998). Namely, midlife
84 exposure to CVRs, including obesity, hypertension, and smoking, has been reported to

85 markedly accelerate the deterioration of the executive functions and was believed to be
86 a better predictor than exposure in later life (Tolppanen et al. 2012, Debette et al. 2011).
87 Furthermore, a subtle decline in cognitive functions including cognitive reaction time
88 and episodic memory, has been identified in middle-aged healthy subjects (younger
89 than 50 years old), adding to the importance of midlife for the prevention of the
90 pathological aspects of aging (Zimprich and Mascherek 2010, Ferreira et al. 2015).
91 Findings as such have raised the question as to whether the observed declines in
92 cognitive or executive abilities were mediated by the structural or functional alterations
93 associated with aging or the exposure to other CVR factors in the cerebral vasculature
94 during midlife. However, for the elucidation of mechanisms underlying those
95 neurological disorders and the preservation of brain functions, a better and more
96 comprehensive understanding of the structural modifications of the intracranial
97 vasculature with aging is required. Nevertheless, previous studies investigating the
98 effect of aging or general CVR factors on the intracranial vessel morphologies usually
99 suffered from a relatively smaller sample size with a restricted age range, minimizing
100 their power to detect earlier changes (Bullitt et al. 2010, Chen et al. 2019).
101 Therefore, in this study, we set out to address two questions. First, how does the
102 characteristics of cerebral vasculature precipitated by MRA alter with aging. Thanks to
103 improved MRA resolution and automatic vascular quantification, in vivo studies
104 investigating the age-related morphological changes of the cerebral vasculature are
105 possible. Second, whether aging affects the cerebral vascular structures differently in
106 different age groups, especially in the middle-aged group (45-54 years), given changes
107 in the cerebrovascular system during this period seemed to have marked predicting
108 power for the cognitive outcomes in later life. In the current study, a large natural
109 population in China aged from 35 to 75 was recruited. A more detailed division of
110 subjects into subgroups based on age has been made to study the effect of aging as well
111 as the conventional CVR factors on vascular morphologies in different age groups.

112

113 **Results**

114 The participant characteristics are presented in Table 1. Figure 1 summarizes the
115 recruitment in the current study. A total of 1240 participants were included; of these,
116 33 participants with poor image quality that is not adequate for vessel segmentation and
117 31 participants with incomplete cerebrovascular risk information were excluded.
118 Therefore, 1176 participants were included in the subsequent analysis.

119 *Association between cerebrovascular morphology and aging*

120 We first investigated the effect of age on the morphometric features of the cerebral
121 vasculature in general. Age was found to be significantly associated with decreased
122 vessel density ($\beta=-5.7\times 10^{-4}$, 95% CI -0.001 to -4.3×10^{-4} , $p<0.001$), increased vessel
123 radius, ($\beta=0.002$, 95% CI 0.002 to 0.002, $p<0.001$), and increased vessel tortuosity,
124 ($\beta=8.5\times 10^{-4}$, 95% CI 6.7×10^{-4} to 0.001, $p<0.001$) after adjusting for CVR factors, as
125 shown in Table 2. The participants were further divided into four groups based on their
126 age to further examine whether the observed effect of aging differed in different age
127 groups (Figure 2a-c). Surprisingly, vessel density was only found to be negatively
128 associated with aging in participants aged 45-54, ($\beta=-0.002$, 95% CI -0.002 to -0.001,
129 $p<0.001$), and 65-75, ($\beta=-0.001$, 95% CI -0.002 to -7.6×10^{-5} , $p=0.036$), and only the
130 association found in people aged 45-54 remained significant after adjusting for CVR
131 factors, ($\beta=-0.001$, 95% CI -0.002 to -0.001, $p=0.001$), suggesting the effects of CVR
132 factors are not negligible for people in the 65-75 age group, whereas the effect of aging
133 dominates the changes of vascular features in the 45-54 age group. Similarly, increased
134 vessel radius was only found to be associated with aging in participants aged 45-54,
135 ($\beta=0.005$, 95% CI 0.002 to 0.008, $p<0.001$), and 65-75, ($\beta=0.003$, 95% CI 2.9×10^{-4} to
136 0.006, $p=0.03$), and, after adjusting for CVR factors, vessel radius was found to be
137 significantly associated with advanced age only in participants aged 45-54, ($\beta=0.005$,
138 95% CI 0.003 to 0.008, $p<0.001$). Increased vessel tortuosity was found to be
139 significantly associated with age in subjects aged 35-44 ($\beta=0.001$, 95% CI 0.001 to
140 0.003, $p=0.03$), and 45-54, ($\beta=0.002$, 95% CI 0.001 to 0.003, $p=0.003$). The
141 associations remained significant after adjusting for CVR factors for participants aged
142 35-44, ($\beta=0.002$, 95% CI 3.4×10^{-4} to 0.003, $p=0.01$), and for participants aged 45-54,
143 ($\beta=0.001$, 95% CI 4.4×10^{-4} to 0.003, $p=0.006$).

144 To better delineate the underlying mechanisms for dilated arteries, we further assessed
145 the proportion of the smaller vessels visualized by MRA. As shown in Table 3, a general
146 decrease in the proportion of the smaller vessels with advancing age was identified, ($\beta=$
147 -3.7×10^{-4} , 95% CI: -6.1×10^{-4} , -1.3×10^{-4} , $p=0.03$). The decrease in mean vessel radius
148 reported before, however, was found not to be due to the decreased proportion of the
149 smaller vessels, since the association between aging and vessel radius was not much
150 affected after adjusting for the proportion of the smaller vessels, ($\beta= 2.7\times 10^{-4}$, 95% CI:
151 6.6×10^{-5} , 4.8×10^{-4} , $p=0.01$), hence suggesting compensatory vasodilatation might be
152 the cause here.

153 *Association between cerebrovascular morphologies and CVR factors*

154 The relationships between cerebrovascular morphologies and CVR factors were further
155 examined. Vessel radius and mean tortuosity were found not to be associated with any
156 of the individual risk factors listed in Table 4. A decrease in vessel density was found
157 in participants with diabetes after adjusting for age and other risk factors ($\beta=-0.005$,
158 95% CI -0.01 to -0.001 , $p<0.046$). Interestingly, the interaction between age and
159 smoking was found to significantly impact vessel density ($\beta= -6.7\times 10^{-4}$, 95% CI: $-$
160 8.8×10^{-4} , 4.6×10^{-4} , $p=0.002$) and vessel radius ($\beta= 0.002$, 95% CI: 9.6×10^{-4} , 0.002 ,
161 $p=0.01$). However, the effect of the interaction between age and alcohol use seems to
162 counteract the effect of aging alone on vascular density and vessel radius. While
163 decreased vascular density and increased vessel radius were found in older adults in
164 general, the interaction of age and alcohol consumption seems to result in a higher
165 vascular density ($\beta= 5.8\times 10^{-4}$, 95% CI: 8.6×10^{-4} , 3.1×10^{-4} , $p=0.03$) and a lower vessel
166 radius ($\beta= -0.002$, 95% CI: -0.003 , -8.6×10^{-4} , $p=0.04$). In general, smoking was found
167 to facilitate the deterioration of the vascular structures, while alcohol use seemed to
168 decelerate the changes (Figure 2d-i). No significant interaction between age and other
169 CVR factors was found.

170 *Association between cerebrovascular morphologies and CVR score*

171 A cumulative CVR score of 0 to 6 was assigned accordingly, with a higher score indicating exposure
172 to fewer CVR factors. The associations between CVR score and vascular morphologies have been
173 reported in Table 5. Overall, a significant association was identified between CVR score and vessel

174 radius after adjusting for age and sex ($\beta = -0.004$ 95% CI: $-0.008, -2.0 \times 10^{-4}$, $p=0.039$). However,
175 when participants were subdivided into age groups, CVR score was only found to be correlated with
176 an increase in vascular density adjusted for age and sex ($\beta = 0.002$, 95% CI: $1.0 \times 10^{-4}, 0.004$, $p=0.041$)
177 in the 55-64 group, and a decrease in vessel radius after adjusting for age and sex ($\beta = -0.010$, 95%
178 CI: $-0.010, -1.6 \times 10^{-4}$, $p=0.048$) in participants aged 35-44.

179

180 **Discussion**

181 In this cross-sectional study, the effect of aging and other conventionally defined CVR
182 factors on the intracerebral arterial morphologies acquired by 3D TOF MRA were
183 investigated. As per previous studies, advanced age was found in our research to be
184 associated with increased vessel radius, increased vessel tortuosity and decreased
185 branch density (Bullitt et al. 2010, Chen et al. 2019). Thanks to the relatively large
186 sample size of this study, assessments of the age- or CVR-related morphological
187 alternations of the cerebral arteries through adulthood were carried out in four
188 subgroups. Indeed, our study might be the first to report the changes in arterial
189 morphologies in relation to aging in different age groups.

190 In subgroups, a significant age-related increase in tortuosity was first identified in the
191 35-44 age subgroup, appearing earlier than the age-related increase in mean arterial
192 radius and decrease in branch density, both of which were first evident in the 45-54 age
193 subgroup. In fact, aging was found to significantly influence all three vascular
194 morphologies only in subjects aged 45-54, and such associations remained significant
195 after adjusting for the vascular risk factors. On the contrary, although significant
196 associations of aging with branch density and mean vascular radius were identified in
197 the 65-75 subgroup initially, those ceased to be significant after adjusting for the
198 vascular risk factors. Our results combined have at least two implications. First,
199 tortuosity may be a more sensitive metrics for vascular aging since it appears to be
200 changing rapidly with aging, even in the youngest subjects. Second, while aging
201 dominates the changes of the morphological features reported above in the 45-54
202 subgroup, common vascular risk factors may have played a more crucial part in the 65-
203 75 subgroup. However, since a full history of chronic conditions from the patients was

204 unavailable, and the vascular risk factors were dichotomously coded (1 for the exposure
205 of risk and 0 for the absence), the investigation of the effect of the chronic conditions
206 duration on vessel structures was not feasible. Further studies may benefit from having
207 such information. For example, it is possible that the effects of the common vascular
208 risks, gradually re-shaping the cerebral vascular system, accrue through a lifetime until
209 significant changes can be observed.

210 Overall, the observed age-related morphological alternations may reflect impaired
211 vascular functions. First, since tortuosity increases the total vessel length, leading to
212 increased flow resistance or, in advanced cases, occlusion of blood flow, it may
213 underpin the previously reported age-related reduction in cerebral perfusion (Han 2012,
214 Melamed et al. 1980). Indeed, tortuosity has been considered to increase the risk of
215 stroke (Alazzaz et al. 2000, Diedrich et al. 2011). Moreover, a recent study found that
216 the tortuosity index of the intracranial vessels can be used to differentiate healthy
217 individuals from subjects with mild cognitive impairment or AD, suggesting that
218 tortuosity may also reflect some pathological changes in the brain (Barbara-Morales et
219 al. 2020). Second, due to the failure of the current MRA to detect under-perfused vessels,
220 the age-related reduction in the branch density may also be the result of impaired
221 cerebral perfusion. Nevertheless, as suggested previously (Bullitt et al. 2010), such
222 reduction in branch density with age may also result from a physical loss of smaller
223 vessels. In view of the restrictions posed by the current imaging method, it is not
224 plausible to attribute the observed reduction in branch density to either one of the causes.
225 Nonetheless, the fact that lower branch density was identified in the older population
226 suggests decrements in vascular functions in the aging population. Third, our results
227 also showed that advanced age was significantly associated with an increase in the mean
228 vessel radius, in agreement with the results from previous MRA studies (Bullitt et al.
229 2010, Chen et al. 2019). Such results may arise from the rarefaction of smaller
230 branches, resulting in a relative increase in the proportion of larger branches,
231 compensatory vasodilation, or both. Our results, however, suggest that compensatory
232 vessel dilation may be a more viable explanation, since aging was still significantly
233 associated with increased vessel density after adjusting for the proportion of smaller

234 vessels. As mentioned before, tortuous vessels increase the flow resistance, resulting in
235 a more prominent drop in the affected sections of vessels and eventually leading to
236 decreased cerebral flow in the downstream vessels. Although very tempting, age-related
237 compensatory vasodilation, which, as indicated by our results, appears later than age-
238 related alternation in the mean vessel tortuosity, may work to counteract the pressure
239 drop brought about by increased tortuosity, and thus maintaining a constant blood flow
240 in the downstream parts. It is even possible that early intervention methods that either
241 prevent or slow further increase of tortuosity may be effective for the preservation of
242 normal vascular functions. Taken together, our results may imply an age-related
243 disturbance of the cerebral hemostasis, which may underlie age-related brain
244 pathologies and would have important implications for early clinical prevention or
245 intervention methods targeting the middle-aged population.

246 In the current study, vascular risk factors were less related to cerebrovascular
247 morphologies after adjusting for age. Whereas having less vascular risks (indicated by
248 a higher CVR score) might mitigate the aging-related morphological alterations, as we
249 found that vascular score was positively correlated with vascular density at the age of
250 55-75. Our results combined emphasized that the common vascular risk factors may
251 play a more prominent role in aged groups. The research in young adults has shown
252 similar findings that lower modifiable cardiovascular score (more cardiovascular risk
253 factors) is associated with lower cerebral vascular density, raising the potential that
254 some individuals may be starting to diverge to different risk trajectories for brain
255 vascular health in early adulthood(Williamson et al. 2018). These results further
256 underline the importance of managing CVR to protect the health of cerebrovascular
257 system. Since reducing vascular risk factors and sustained lifestyle intervention can
258 reduce cardiovascular burden (Spring et al. 2014, Shah et al. 2016), and improve
259 cerebral blood flow (Espeland et al. 2018).

260 Interaction of aging and risk factors on vascular morphology was presented. Greater
261 effects of aging on cerebrovascular morphologies in smokers were observed in this
262 study. A previous report has indicated that cigarette smoking could induce vascular
263 smooth muscle cell senescence (Centner, Bhide and Salazar 2020). The accumulation

264 of senescent VSMCs with aging may be the underlying cause for our observation. The
265 interaction of aging with alcohol consumption also significantly affects the vascular
266 morphologies was the. Although the relationship between aging and vascular
267 morphology was steeper in non-drinking participants, vascular density was lower in
268 drinking participants for almost the entire age range. The possible explanation is that
269 few participants are drinkers in our study, leading to the minimal power of our results.
270 Future studies with more participants would help verify these interactions.

271 This study suffered from several limitations: 1) only one MRI modality, TOF MRA,
272 was available in the study, which makes further investigation of the potential causes of
273 the discussed vascular alterations implausible. For example, to extract the general trend
274 of the age-related cerebral perfusion changes in different age subgroups, arterial spin-
275 labeling would be necessary. 2) Risk factors were coded in our analysis as only having
276 dichotomous values indicating whether the subject had the chronic condition at the time
277 when their data was collected, and their medical history was not available. However, as
278 implied by our results, the effect of those risk factors may accumulate throughout time
279 until the consequence is noticeable. Future studies would benefit from having access to
280 the medical history and more detailed information of the subjects' chronic conditions
281 such as the duration. 3) The cerebral vessel structural information obtained from TOF
282 MRA was averaged for each individual, and thus might be unable to identify subtle
283 correlations between aging and local vessels. Existing studies have also primarily
284 focused on the cerebral vasculature in terms of whole-brain averaging or local
285 averaging (Williamson et al. 2018, Mouches et al. 2021), since it is laborious to
286 distinguish vessels by anatomical structure on images manually. More intelligent
287 techniques, such as machine learning-based approaches, are needed to automate the
288 distinction between different cerebral vessels.

289 In the current study, we present an analysis of the 3D TOF MRA images of 1176
290 subjects recruited from 2 communities in Shanghai. Significant differences in the
291 cerebrovascular morphologies were identified between older subjects and younger
292 subjects even after adjusting for vascular risk factors. In subgroups based on age, age
293 was a significant predictor for the alternations of all three vessel morphologies extracted

294 by MRA only in the 45-54 subgroup. In the 65-75 subgroup, although significant
295 associations of aging with branch density and vessel radius were initially identified, the
296 significance has ceased to exist after adjusting for vascular risk factors. Furthermore,
297 the age-related increase in tortuosity was the only significant age-related change
298 identified in the youngest subgroup. These results provide two key insights. First,
299 morphometric changes visualizable by MRA may underlie different physiological
300 processes. Second, early intervention methods that either prevent or slow further
301 increases of tortuosity may be effective for preserving normal vascular functions.

302

303 **Materials and Methods**

304 *Participants*

305 Participants in the present study also completed the survey of unruptured cerebral
306 aneurysms in Chinese adults (Li et al. 2013). This cross-sectional study initially
307 enrolled 4813 participants (aged 35 to 75 years) who completed the survey between
308 June 2007 and June 2011 from two different Shanghai communities in China. Ten years
309 later (2017 to 2021), participants were invited to call back and reported on their health
310 status. As shown in Figure 1, 3198 participants at the first survey who were free of
311 cardiac disease, stroke, arteriostenosis or a history of cancer were first selected for the
312 call back. Participants with identified intracranial aneurysms were not included to
313 prevent potential influence of cerebral aneurysms on vascular morphology. Among the
314 3198 subjects, 1751 participants that either withdrew or refused to respond to the call
315 back and 207 participants who had severe cardiovascular disease (CVD) events,
316 including myocardial infarction, unstable angina, heart failure, coronary heart disease
317 or stroke over the 10 years were excluded. 1240 participants were included in final the
318 analysis. In these participants, although some have suffered chronic conditions, such as
319 hypertension and diabetes, these conditions were well managed, and no severe CVD
320 events were reported during the past ten years. The study was approved by the
321 institutional review board of the Sixth People's Hospital, Shanghai, China. All
322 participants were voluntarily enrolled and provided written informed consent before
323 data collection.

324 ***Assessment of Risk Factors***

325 Initially, all participants were asked to complete a standard questionnaire to provide
326 demographic characteristics, personal and family medical history, and lifestyle risk
327 factors. Information about smoking, alcohol consumption, hypertension, diabetes,
328 hyperlipidemia, stroke, coronary heart disease, myocardial infarction, and arrhythmia
329 was obtained. In addition, participants completed physical examinations including
330 measurement of height, weight, and blood pressure. Venous blood samples were
331 collected by certified nurses between 7 AM and 8 AM after overnight fasting. The
332 presence of hypertension was defined as systolic blood pressure ≥ 140 mm Hg or
333 diastolic blood pressure ≥ 90 mm Hg, a previous diagnosis of hypertension, or use of
334 anti-hypertensive medications. Smokers were defined as smoked >100 cigarettes in a
335 lifetime, and drinker was defined as consuming >30 g of alcohol per week for 1 or
336 more year. The presence of diabetes was defined by a fasting level of plasma glucose
337 ≥ 7.0 mmol/L, a previous diagnosis of diabetes, or treatment with antidiabetic drugs.
338 Hyperlipidemia was defined by total plasma cholesterol (TC) ≥ 5.2 mmol/L,
339 triglycerides (TG) ≥ 1.7 mmol/L, a previous diagnosis of hyperlipidemia, or use of
340 lipid-lowering drugs. During the call back, a new questionnaire was administered by
341 trained staff to obtain information on medical history within the past 10 years. Due to
342 the limitations of the call back, accurate assessments of the vascular risk factors were
343 not possible. Hence the vascular risk information from baseline was used in the
344 subsequent analysis.

345 ***MRI Scanning and Processing***

346 All MRI examinations were performed on one 3.0T MRI system (Philips Healthcare,
347 Amsterdam, The Netherlands). 3D-TOF MRA was completed using 3-dimensional T1-
348 weighted fast-field sequences with the following settings: repetition time/echo time,
349 35/7; flip angle, 20 degrees; field of view, 250 \times 190 \times 108 mm³; 4 slabs (180 slices);
350 slice thickness, 0.8 mm; matrix, 732 \times 1024; acquisition time, 8 minutes and 56 seconds.
351 Any adverse events during the MRI examination, including panic attack,
352 claustrophobia, dizziness, or falling, were queried and monitored by the investigators.

353 Cerebral vessel segmentation and morphologies extraction were completed on TOF
354 MRA with the following steps: 1) vascular structures were enhanced using the Jerman
355 Enhancement Filter (Jerman et al. 2016); 2) the level-set based method was used to
356 obtain vessel segmentation; 3) segmentation results were firstly checked by B.Y.Z and
357 B.W. Segmentations with too few vascular branches, nonvascular tissue remnants, or
358 incorrect vascular branch adhesions were re-segmented by adjusting the algorithm
359 parameters. Then all segmentation results were visually checked twice by two
360 radiologist J.L and Y.H.L who have over 3 years' experience with neuroimaging
361 interpretation. The segmented vessels that were still showing too few branches,
362 remnants of nonvascular tissue, or severe vascular branch adhesions were defined as
363 poor vascular segmentation and excluded from the analysis; 4) vessel centerlines were
364 extracted using the Skeleton 3D toolbox(Kollmannsberger et al. 2017); 5)
365 cerebrovascular morphologic measurements, including vessel density, radius and
366 tortuosity were calculated. To avoid the influence of extracerebral vessels, the brain
367 extraction tool of FSL (<https://fsl.fmrib.ox.ac.uk/fsl/fslwiki/>) was used to segment the
368 brain regions on MRA images. Only vessels involved in the brain region were included
369 in the subsequent analysis. The vessel density was defined as the ratio of intracranial
370 artery branch numbers to the brain volume. The vessel tortuosity represents the
371 averaged tortuosity for each segment and was calculated as the ratio of the shortest path
372 and the actual length of a given vessel segment. The vessel radius was determined in
373 each centerline points and then averaged over each individual participant. The smaller
374 vessels were defined as vessels with a mean radius less than a certain threshold (global
375 thresholding based on the radius distribution of the whole intracranial arteries) (Zhang
376 et al. 2021). All data processing processes were accomplished on the Matlab2019a
377 (MathWorks, Natick, Massachusetts, USA).

378 *Statistical Analysis*

379 Bivariable and multivariable analyses were completed to investigate association
380 between cerebrovascular morphologies (cerebral vessel density, radius and tortuosity)
381 and vascular risk makers (age, body mass index, smoking, alcohol consumption,
382 diabetes, hypertension and hyperlipidemia). Linear regression models were used with

383 the risk makers as the determinant and cerebrovascular morphologies as outcome
384 variables. The differential influence of aging on cerebrovascular morphologies by other
385 risk makers was tested using interaction terms in the multivariable model. Participants
386 were divided into different age groups according to their age: middle-youth (35-54
387 years), middle-aged (55-75 years), 35 to 44 years, 45 to 54 years, 55 to 64 years and 65
388 to 75 years.

389 The individuals' combined CVR score from 6 risk factors was also analyzed, as existing
390 evidence indicated combined risk factor score was correlated with the brain health in
391 young adults (Williamson et al. 2018). The score was cumulative based on each of the
392 following factors: body mass index ≤ 24 ; no smoking; not a drinker; no hyperlipidemia;
393 no hypertension; no diabetes, with a higher number indicating less exposure to
394 cerebrovascular risks. The relationships between the CVR score and MRA findings
395 were studied using the linear regression model. In addition, linear analysis was
396 completed to investigate the correlations between aging and cerebrovascular
397 morphologies in different age subgroups.

398 All statistical analysis was completed using Matlab2019a (MathWorks, Natick,
399 Massachusetts, USA). Shapiro-Wilk test was performed to confirm the normality of
400 continuous variables. Results of normally distributed continuous variables are
401 presented as mean and standard deviation (SD) or as median and interquartile range
402 (IQR). For categorical variables, frequencies, and proportions are presented. The two-
403 sample t-test was used to evaluate group differences. All tests were 2-sided and a
404 probability value <0.05 was considered significant.

405

406 **Funding:** This work was supported by the National Natural Science Foundation of
407 China (No. 81971583, No. 81871329), National Key R&D Program of China (No.
408 2018YFC1312900), New developing and Frontier Technologies of Shanghai Shen
409 Kang Hospital Development Center (No. SHDC12018117), Shanghai Municipal
410 Education Commission-Gaofeng Clinical Medicine Grant (No. 2016427), Shanghai
411 Municipal Science and Technology Major Project (No.2018SHZDZX01,
412 No.2017SHZDZX01) and ZJLab.

413

414 **Competing interests statement**

415 There are no competing interests.

416

417 **Reference**

- 418 Alazzaz, A., J. Thornton, V. A. Aletich, G. M. Debrun, J. I. Ausman & F. Charbel (2000) Intracranial
419 Percutaneous Transluminal Angioplasty for Arteriosclerotic Stenosis. *Archives of Neurology*, 57,
420 1625-1630.
- 421 Alber, J., S. Alladi, H.-J. Bae, D. A. Barton, L. A. Beckett, J. M. Bell, S. E. Berman, G. J. Biessels, S. E.
422 Black, I. Bos, G. L. Bowman, E. Brai, A. M. Brickman, B. L. Callahan, R. A. Corriveau, S.
423 Fossati, R. F. Gottesman, D. R. Gustafson, V. Hachinski, K. M. Hayden, A. M. Helman, T. M.
424 Hughes, J. D. Isaacs, A. L. Jefferson, S. C. Johnson, A. Kapasi, S. Kern, J. C. Kwon, J. Kukolja,
425 A. Lee, S. N. Lockhart, A. Murray, K. E. Osborn, M. C. Power, B. R. Price, H. F. M. Rhodius-
426 Meester, J. A. Rondeau, A. C. Rosen, D. L. Rosene, J. A. Schneider, H. Scholtzova, C. E.
427 Shaaban, N. C. B. S. Silva, H. M. Snyder, W. Swardfager, A. M. Troen, S. J. van Veluw, P.
428 Vemuri, A. Wallin, C. Wellington, D. M. Wilcock, S. X. Xie & A. H. Hainsworth (2019) White
429 matter hyperintensities in vascular contributions to cognitive impairment and dementia (VCID):
430 Knowledge gaps and opportunities. *Alzheimer's & dementia (New York, N. Y.)*, 5, 107-117.
- 431 Banerjee, G., D. Wilson, H. R. Jäger & D. J. Werring (2016) Novel imaging techniques in cerebral small
432 vessel diseases and vascular cognitive impairment. *Biochim Biophys Acta*, 1862, 926-38.
- 433 Barbara-Morales, E., J. Perez-Gonzalez, K. C. Rojas-Saavedra & V. Medina-Banuelos (2020) Evaluation
434 of Brain Tortuosity Measurement for the Automatic Multimodal Classification of Subjects with
435 Alzheimer's Disease. *Computational Intelligence and Neuroscience*, 2020.
- 436 Bullitt, E., D. Zeng, B. Mortamet, A. Ghosh, S. R. Aylward, W. Lin, B. L. Marks & K. Smith (2010) The
437 effects of healthy aging on intracerebral blood vessels visualized by magnetic resonance
438 angiography. *Neurobiology of Aging*, 31, 290-300.
- 439 Centner, A. M., P. G. Bhide & G. Salazar (2020) Nicotine in Senescence and Atherosclerosis. *Cells*, 9.
- 440 Chen, L., J. Sun, D. S. Hippe, N. Balu, Q. Yuan, I. Yuan, X. Zhao, R. Li, L. He, T. S. Hatsukami, J.-N.
441 Hwang & C. Yuan (2019) Quantitative assessment of the intracranial vasculature in an older
442 adult population using iCafe. *Neurobiology of Aging*, 79, 59-65.
- 443 D'Agostino, R. B., R. S. Vasan, M. J. Pencina, P. A. Wolf, M. Cobain, J. M. Massaro & W. B. Kannel
444 (2008) General Cardiovascular Risk Profile for Use in Primary Care. *Circulation*, 117, 743-753.
- 445 Debette, S., S. Seshadri, A. Beiser, R. Au, J. J. Himali, C. Palumbo, P. A. Wolf & C. DeCarli (2011)
446 Midlife vascular risk factor exposure accelerates structural brain aging and cognitive decline.
447 *Neurology*, 77, 461-468.
- 448 Diedrich, K. T., J. A. Roberts, R. H. Schmidt, C. K. Kang, Z. H. Cho & D. L. Parker (2011) Validation
449 of an arterial tortuosity measure with application to hypertension collection of clinical
450 hypertensive patients. *BMC Bioinformatics*, 12 Suppl 10, S15.
- 451 Donato, A. J., D. R. Machin & L. A. Lesniewski (2018) Mechanisms of Dysfunction in the Aging
452 Vasculature and Role in Age-Related Disease. *Circulation Research*, 123, 825-848.
- 453 Espeland, M. A., J. A. Luchsinger, R. H. Neiberg, O. Carmichael, P. J. Laurienti, X. Pi-Sunyer, R. R.
454 Wing, D. Cook, E. Horton, R. Casanova, K. Erickson, R. N. Bryan & M. Action Hlth Diabet

- 455 Brain (2018) Long Term Effect of Intensive Lifestyle Intervention on Cerebral Blood Flow.
456 *Journal of the American Geriatrics Society*, 66, 120-126.
- 457 Ferreira, D., R. Correia, A. Nieto, A. Machado, Y. Molina & J. Barroso (2015) Cognitive decline before
458 the age of 50 can be detected with sensitive cognitive measures. *Psicothema*, 27, 216-22.
- 459 Han, H.-C. (2012) Twisted blood vessels: symptoms, etiology and biomechanical mechanisms. *Journal*
460 *of vascular research*, 49, 185-197.
- 461 Jerman, T., F. Pernus, B. Likar & Z. Spiclin (2016) Enhancement of Vascular Structures in 3D and 2D
462 Angiographic Images. *Ieee Transactions on Medical Imaging*, 35, 2107-2118.
- 463 Kalaria, R. N. (2002) Small Vessel Disease and Alzheimer's Dementia: Pathological Considerations.
464 *Cerebrovascular Diseases*, 13(suppl 2), 48-52.
- 465 Kloppenborg, R. P., E. van den Berg, L. J. Kappelle & G. J. Biessels (2008) Diabetes and other vascular
466 risk factors for dementia: which factor matters most? A systematic review. *Eur J Pharmacol*,
467 585, 97-108.
- 468 Kollmannsberger, P., M. Kerschnitzki, F. Repp, W. Wagermaier, R. Weinkamer & P. Fratzl (2017) The
469 small world of osteocytes: connectomics of the lacuno-canalicular network in bone. *New*
470 *Journal of Physics*, 19.
- 471 Laurent, S. & P. Boutouyrie (2015) The Structural Factor of Hypertension Large and Small Artery
472 Alterations. *Circulation Research*, 116, 1007-1021.
- 473 Leeuwis, A. E., M. R. Benedictus, J. P. A. Kuijper, M. A. A. Binnewijzend, A. M. Hooghiemstra, S. C. J.
474 Verfaillie, T. Koene, P. Scheltens, F. Barkhof, N. D. Prins & W. M. van der Flier (2017) Lower
475 cerebral blood flow is associated with impairment in multiple cognitive domains in Alzheimer's
476 disease. *Alzheimers & Dementia*, 13, 531-540.
- 477 Li, M.-H., S.-W. Chen, Y.-D. Li, Y.-C. Chen, Y.-S. Cheng, D.-J. Hu, H.-Q. Tan, Q. Wu, W. Wang, Z.-K.
478 Sun, X.-E. Wei, J.-Y. Zhang, R.-H. Qiao, W.-H. Zong, Y. Zhang, W. Lou, Z.-Y. Chen, Y. Zhu,
479 D.-R. Peng, S.-X. Ding, X.-F. Xu, X.-H. Hou & W.-P. Jia (2013) Prevalence of Unruptured
480 Cerebral Aneurysms in Chinese Adults Aged 35 to 75 Years. *Annals of Internal Medicine*, 159,
481 514-+.
- 482 Melamed, E., S. Lavy, S. Bentin, G. Cooper & Y. Rinot (1980) REDUCTION IN REGIONAL
483 CEREBRAL BLOOD-FLOW DURING NORMAL AGING IN MAN. *Stroke*, 11, 31-35.
- 484 Mouches, P., S. Langner, M. Domin, M. D. Hill & N. D. Forkert (2021) Influence of cardiovascular risk-
485 factors on morphological changes of cerebral arteries in healthy adults across the life span.
486 *Scientific Reports*, 11.
- 487 Shah, R. V., V. L. Murthy, L. A. Colangelo, J. Reis, B. A. Venkatesh, R. Sharma, S. A. Abbasi, D. C. Goff,
488 J. J. Carr, J. S. Rana, J. G. Terry, C. Bouchard, M. A. Sarzynski, A. Eisman, T. Neilan, S. Das,
489 M. Jerosch-Herold, C. E. Lewis, M. Carnethon, G. D. Lewis & J. A. C. Lima (2016) Association
490 of Fitness in Young Adulthood With Survival and Cardiovascular Risk The Coronary Artery
491 Risk Development in Young Adults (CARDIA) Study. *Jama Internal Medicine*, 176, 87-95.
- 492 Silvestrini, M., P. Pasqualetti, R. Baruffaldi, M. Bartolini, Y. Handouk, M. Matteis, F. Moffa, L.
493 Provinciali & F. Vernieri (2006) Cerebrovascular Reactivity and Cognitive Decline in Patients
494 With Alzheimer Disease. *Stroke*, 37, 1010-1015.
- 495 Spring, B., A. C. Moller, L. A. Colangelo, J. Siddique, M. Roehrig, M. L. Daviglus, J. F. Polak, J. P. Reis,
496 S. Sidney & K. Liu (2014) Healthy Lifestyle Change and Subclinical Atherosclerosis in Young
497 Adults Coronary Artery Risk Development in Young Adults (CARDIA) Study. *Circulation*, 130,
498 10-+.

- 499 Swan, G. E., C. DeCarli, B. L. Miller, T. Reed, P. A. Wolf, L. M. Jack & D. Carmelli (1998) Association
500 of midlife blood pressure to late-life cognitive decline and brain morphology. *Neurology*, 51,
501 986-993.
- 502 Tolppanen, A. M., A. Solomon, H. Soininen & M. Kivipelto (2012) Midlife vascular risk factors and
503 Alzheimer's disease: evidence from epidemiological studies. *J Alzheimers Dis*, 32, 531-40.
- 504 Walker, K. A., A. R. Sharrett, A. Wu, A. L. C. Schneider, M. Albert, P. L. Lutsey, K. Bandeen-Roche, J.
505 Coresh, A. L. Gross, B. G. Windham, D. S. Knopman, M. C. Power, A. M. Rawlings, T. H.
506 Mosley & R. F. Gottesman (2019) Association of Midlife to Late-Life Blood Pressure Patterns
507 With Incident Dementia. *Jama-Journal of the American Medical Association*, 322, 535-545.
- 508 Williamson, W., A. J. Lewandowski, N. D. Forkert, L. Griffanti, T. W. Okell, J. Betts, H. Boardman, T.
509 Siepmann, D. McKean, O. Huckstep, J. M. Francis, S. Neubauer, R. Phellan, M. Jenkinson, A.
510 Doherty, H. Dawes, E. Frangou, C. Malamateniou, C. Foster & P. Leeson (2018) Association of
511 Cardiovascular Risk Factors With MRI Indices of Cerebrovascular Structure and Function and
512 White Matter Hyperintensities in Young Adults. *Jama-Journal of the American Medical*
513 *Association*, 320, 665-673.
- 514 Xu, X., B. Wang, C. Ren, J. Hu, D. A. Greenberg, T. Chen, L. Xie & K. Jin (2017) Age-related Impairment
515 of Vascular Structure and Functions. *Aging and Disease*, 8, 590-610.
- 516 Zhang, B., Y. Wang, B. Wang, Y.-H. Chu, Y. Jiang, M. Cui, H. Wang & X. Chen (2021) MRI-Based
517 Investigation of Association Between Cerebrovascular Structural Alteration and White Matter
518 Hyperintensity Induced by High Blood Pressure. *Journal of Magnetic Resonance Imaging*.
- 519 Zhang, D. & M. E. Raichle (2010) Disease and the brain's dark energy. *Nature Reviews Neurology*, 6, 15-
520 28.
- 521 Zimprich, D. & A. Mascherek (2010) Five views of a secret: does cognition change during middle
522 adulthood? *European Journal of Ageing*, 7, 135-146.
- 523
524

525

Table 1. Characteristics of the Study Participants

Age Range	35-44 y	45-54 y	55-64 y	65-75 y	Overall
Demographic					
Participants, No.	201	421	342	212	1176
Age, mean (SD), years	40.4 (3.3)	51.1 (2.7)	59.3 (2.8)	70.3 (3.2)	55.1 (9.9)
Female, No. (%)	121 (0.60)	279 (0.66)	189 (0.55)	113 (0.53)	702 (0.60)
Body mass index, mean (SD)	23.3 (3.0)	23.5 (3.0)	23.8 (2.9)	23.2 (2.6)	23.5 (2.9)
Smoking, No. (%)	30 (0.15)	87 (0.21)	70 (0.20)	39 (0.18)	226 (0.19)
Alcohol consumption, No. (%)	16 (0.08)	42 (0.10)	55 (0.16)	24 (0.11)	137 (0.12)
Diabetes diagnosis, No. (%)	1 (0)	29 (0.07)	34 (0.10)	30 (0.14)	94 (0.08)
Hypertension, No. (%)	22 (0.11)	78 (0.19)	117 (0.34)	84 (0.40)	301 (0.26)
Hyperlipidemia, No. (%)	7 (0.03)	14 (0.03)	30.0 (0.09)	15.0 (0.07)	66 (0.06)
Cerebrovascular morphology					
Vessel density, mean (SD)	0.09 (0.02)	0.08 (0.02)	0.07 (0.02)	0.07 (0.02)	0.08 (0.02)
Vessel radius, mean (SD), mm	0.78 (0.07)	0.80 (0.08)	0.82 (0.07)	0.83 (0.07)	0.81 (0.07)
Vessel tortuosity, mean (SD)	1.19 (0.03)	1.20 (0.03)	1.20 (0.03)	1.21 (0.03)	1.2 (0.03)

526

527

528

Table 2. Association between age and cerebrovascular morphologies.

529

In the multivariable adjusted models, sex and cerebrovascular risk factors were adjusted,

530

including body mass index, smoking status, alcohol consumption, diabetes status, hypertension

531

status and hyperlipidemia status. Middle-youth represented participants aged from 35 to 54

532

years. Middle-aged represented participants aged from 55 to 75 years.

	Bivariable		Multivariable adjusted	
	Estimation. β (95%)	p value	Estimation. β (95%)	p value
Vessel density				
Middle-youth	-8.1×10^{-4} (-0.001 to -4.9×10^{-4})	$p < 0.001$	-8.0×10^{-4} (-0.001 to -4.8×10^{-4})	$p < 0.001$
Middle-aged	-4.3×10^{-4} (-0.001 to -1.2×10^{-4})	0.008	-4.0×10^{-4} (-0.001 to -7.5×10^{-5})	0.02
35-44 years	-8.8×10^{-4} (-0.002 to 1.4×10^{-4})	0.09	-9.2×10^{-4} (-0.002 to 1.1×10^{-4})	0.08
45-54 years	-0.002 (-0.002 to -0.001)	$p < 0.001$	-0.001 (-0.002 to -0.001)	0.001
55-64 years	-3.1×10^{-4} (-0.001 to 0.001)	0.48	-2.6×10^{-4} (-0.001 to 0.001)	0.56
65-75 years	-0.001 (-0.002 to -7.6×10^{-5})	0.036	-8.8×10^{-4} (-0.002 to 1.7×10^{-4})	0.10
Overall	-5.9×10^{-4} (-0.001 to -4.5×10^{-4})	$p < 0.001$	-5.7×10^{-4} (-0.001 to -4.3×10^{-4})	$p < 0.001$
Vessel radius				
Middle-youth	0.003 (0.002 to 0.003)	$p < 0.001$	0.003 (0.002 to 0.004)	$p < 0.001$
Middle-aged	0.002 (0.001 to 0.003)	$p < 0.001$	0.002 (0.001 to 0.003)	0.001
35-44 years	0.001 (-0.002 to 0.004)	0.45	0.001 (-0.001 to 0.004)	0.33
45-54 years	0.005 (0.002 to 0.008)	$p < 0.001$	0.005 (0.003 to 0.008)	$p < 0.001$
55-64 years	0.003 (-5.3×10^{-5} to 0.006)	0.06	0.003 (-2.3×10^{-4} to 0.005)	0.07
65-75 years	0.003 (2.9×10^{-4} to 0.006)	0.03	0.002 (-0.001 to 0.005)	0.13
Overall	0.002 (0.002 to 0.002)	$p < 0.001$	0.002 (0.002 to 0.002)	$p < 0.001$
Vessel tortuosity				
Middle-youth	0.001 (0.001 to 0.002)	$p < 0.001$	0.001 (0.001 to 0.002)	$p < 0.001$
Middle-aged	7.8×10^{-4} (3.6×10^{-4} to 0.001)	$p < 0.001$	7.7×10^{-4} (3.5×10^{-4} to 0.001)	$p < 0.001$
35-44 years	0.001 (1.6×10^{-4} to 0.003)	0.03	0.002 (3.4×10^{-4} to 0.003)	0.01
45-54 years	0.002 (0.001 to 0.003)	0.003	0.001 (4.4×10^{-4} to 0.003)	0.006
55-64 years	2.6×10^{-4} (-0.001 to 0.001)	0.65	3.2×10^{-4} (-0.001 to 0.001)	0.58
65-75 years	7.2×10^{-4} (-0.001 to 0.002)	0.31	7.5×10^{-4} (-0.001 to 0.002)	0.32
Overall	8.4×10^{-4} (0.001 to 0.001)	$p < 0.001$	8.5×10^{-4} (0.001 to 0.001)	$p < 0.001$

533

534

535

Table 3. Association between age and smaller vessels.

536 In the multivariable adjusted models, sex and cerebrovascular risk factors were adjusted, including
537 body mass index, smoking status, alcohol consumption, diabetes status, hypertension status and
538 hyperlipidemia status.

	Estimation, β (95%CI)	p value
Proportion of smaller vessels (PSV)		
Bivariable	-4.0×10^{-4} (-6.3×10^{-4} to -1.7×10^{-4})	0.001
Multivariable adjusted	-3.7×10^{-4} (-6.1×10^{-4} to -1.3×10^{-4})	0.003
Vessel Radius adjusted for PSV	2.7×10^{-4} (6.6×10^{-5} to 4.8×10^{-4})	0.01

539

540

541 **Table 4. Association between cerebrovascular morphologies and cerebrovascular risk**
 542 **factors**
 543 Only significant interaction terms were presented. Middle-youth represented participants aged
 544 from 35 to 54 years. Middle-aged represented participants aged from 55 to 75 years.

	Bivariable		Multivariable	
	Estimation, β (95%CI)	p value	Estimation, β (95%CI)	p value
Vessel density				
Age	-5.9×10^{-4} (-7.2×10^{-4} to -4.5×10^{-4})	$p < 0.001$	-5.7×10^{-4} (-7.1×10^{-4} to -4.3×10^{-4})	$p < 0.001$
Body mass index	-2.4×10^{-6} (-4.8×10^{-4} to 4.7×10^{-4})	0.99	1.4×10^{-5} (-4.6×10^{-4} to 4.9×10^{-4})	0.95
Smoking	-0.002 (-0.006 to 0.001)	0.25	-2.7×10^{-4} (-0.004 to 0.004)	0.89
Alcohol consumption	-0.004 (-0.009 to -1.5×10^{-4})	0.043	-0.003 (-0.008 to 0.001)	0.16
Diabetes diagnosis	-0.008 (-0.01 to -0.003)	0.001	-0.005 (-0.01 to -9.1×10^{-5})	0.046
Hypertension	-0.003 (-0.006 to 3.4×10^{-4})	0.08	5.8×10^{-4} (-0.003 to 0.004)	0.72
Hyperlipidemia	0.003 (-0.003 to 0.009)	0.31	0.005 (-5.4×10^{-4} to 0.01)	0.07
Age*Smoking	--	--	-6.7×10^{-4} (-8.8×10^{-4} to -4.6×10^{-4})	0.002
Age*Alcohol consumption	--	--	5.8×10^{-4} (8.6×10^{-4} to 3.1×10^{-4})	0.03
Vessel radius				
Age	0.002 (0.002 to 0.002)	$p < 0.001$	0.002 (0.002 to 0.002)	$p < 0.001$
Body mass index	3.6×10^{-4} (-0.001 to 0.002)	0.63	4.2×10^{-4} (-0.001 to 0.002)	0.56
Smoking	0.01 (8.0×10^{-4} to 0.02)	0.035	0.01 (-0.001 to 0.02)	0.08
Alcohol consumption	0.009 (-0.004 to 0.02)	0.19	-7.7×10^{-4} (-0.02 to 0.01)	0.92
Diabetes diagnosis	0.02 (0.008 to 0.04)	0.003	0.01 (-0.004 to 0.03)	0.14
Hypertension	0.009 (-3.5×10^{-4} to 0.02)	0.06	-0.002 (-0.01 to 0.008)	0.68
Hyperlipidemia	-0.007 (-0.03 to 0.01)	0.42	-0.02 (-0.03 to 0.003)	0.10
Age*Smoking	--	--	0.002 (9.6×10^{-4} to 0.002)	0.01
Age*Alcohol consumption	--	--	-0.002 (-0.003 to -8.6×10^{-4})	0.036
Vessel tortuosity				
Age	8.4×10^{-4} (6.7×10^{-4} to 0.001)	$p < 0.001$	8.5×10^{-4} (6.7×10^{-4} to 0.001)	$p < 0.001$
Body mass index	2.7×10^{-4} (-3.5×10^{-4} to 8.8×10^{-4})	0.39	3.0×10^{-4} (-3.1×10^{-4} to 9.1×10^{-4})	0.33
Smoking	9.3×10^{-4} (-0.004 to 0.005)	0.69	0.002 (-0.003 to 0.007)	0.52
Alcohol consumption	-2.8×10^{-4} (-0.006 to 0.005)	0.92	-0.003 (-0.009 to 0.004)	0.40
Diabetes diagnosis	0.005 (-0.002 to 0.01)	0.17	-6.2×10^{-4} (-0.007 to 0.006)	0.85
Hypertension	0.005 (5.8×10^{-4} to 0.009)	0.03	-1.5×10^{-4} (-0.004 to 0.004)	0.95
Hyperlipidemia	0.002 (-0.005 to 0.01)	0.57	-4.0×10^{-4} (-0.008 to 0.007)	0.92

545

546

547 **Table 5. Association between cerebrovascular score and cerebrovascular morphologies.**

548 Middle-youth represented participants aged from 35 to 54 years. Middle-aged represented

549 participants aged from 55 to 75 years.

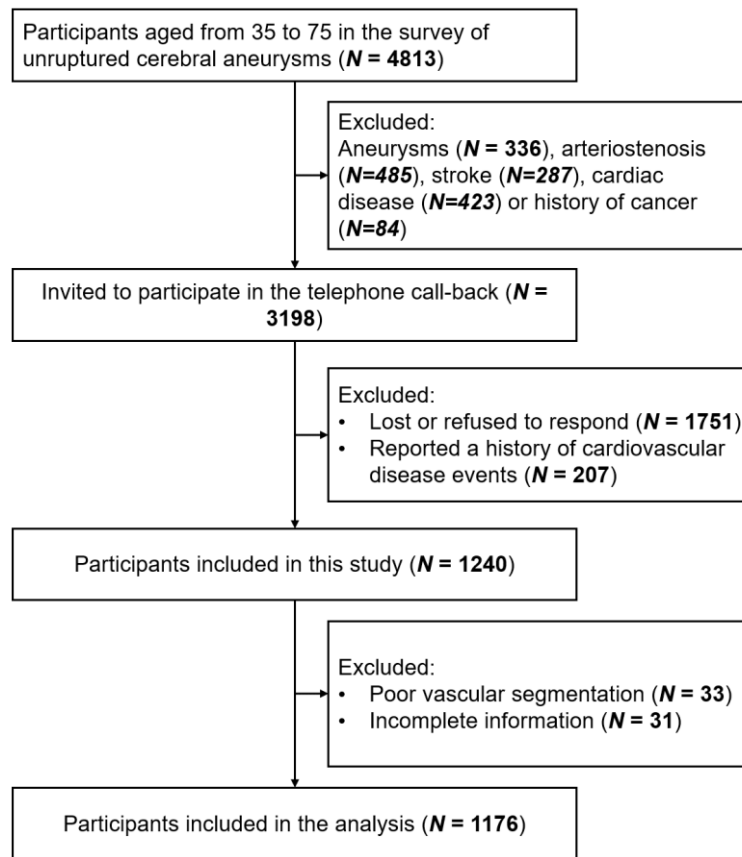
	Estimation. β (95%)	p value	Adjusted for age and sex	
			Estimation. β (95%)	p value
Vessel density				
Middle-youth	-1.9×10^{-4} (-0.002 to 0.002)	0.83	-6.3×10^{-4} (-0.002 to 0.001)	0.50
Middle-aged	0.002 (0.001 to 0.004)	0.007	0.002 (0.001 to 0.004)	0.01
35-44 years	0.001 (-0.002 to 0.005)	0.45	0.001 (-0.002 to 0.005)	0.44
45-54 years	-0.001 (-0.004 to 0.001)	0.18	-0.001 (-0.003 to 0.001)	0.28
55-64 years	0.002 (2.8×10^{-4} to 0.004)	0.03	0.002 (1.0×10^{-4} to 0.004)	0.041
65-75 years	0.003 (-4.7×10^{-4} to 0.006)	0.10	0.002 (-0.001 to 0.005)	0.17
Overall	0.002 (0.001 to 0.003)	0.005	8.8×10^{-4} (-3.8×10^{-4} to 0.002)	0.17
Vessel radius				
Middle-youth	-0.004 (-0.010 to 0.001)	0.14	-0.003 (-0.009 to 0.002)	0.22
Middle-aged	-0.004 (-0.010 to 0.001)	0.10	-0.004 (-0.010 to 0.001)	0.09
35-44 years	-0.009 (-0.02 to 5.4×10^{-5})	0.053	-0.010 (-0.02 to -1.6×10^{-4})	0.048
45-54 years	-2.5×10^{-4} (-0.007 to 0.007)	0.94	-0.001 (-0.008 to 0.005)	0.69
55-64 years	-0.003 (-0.010 to 0.004)	0.40	-0.003 (-0.009 to 0.004)	0.45
65-75 years	-0.008 (-0.02 to 2.8×10^{-4})	0.06	-0.007 (-0.02 to 0.001)	0.09
Overall	-0.007 (-0.01 to -0.003)	0.001	-0.004 (-0.008 to -2.0×10^{-4})	0.039
Vessel tortuosity				
Middle-youth	-4.4×10^{-4} (-0.003 to 0.002)	0.71	5.1×10^{-4} (-0.002 to 0.003)	0.66
Middle-aged	-0.001 (-0.003 to 0.001)	0.38	-9.6×10^{-4} (-0.003 to 0.001)	0.42
35-44 years	-0.003 (-0.008 to 0.001)	0.12	-0.004 (-0.008 to 3.4×10^{-4})	0.07
45-54 years	0.002 (-0.001 to 0.005)	0.16	0.002 (-3.6×10^{-4} to 0.005)	0.09
55-64 years	-6.2×10^{-4} (-0.003 to 0.002)	0.65	-5.2×10^{-4} (-0.003 to 0.002)	0.71
65-75 years	-0.002 (-0.007 to 0.002)	0.29	-0.002 (-0.006 to 0.002)	0.36
Overall	-0.002 (-0.003 to -1.4×10^{-5})	0.048	-2.6×10^{-4} (-0.002 to 0.001)	0.76

550

551

552

Figure 1. Flow chart of recruitment in the current study

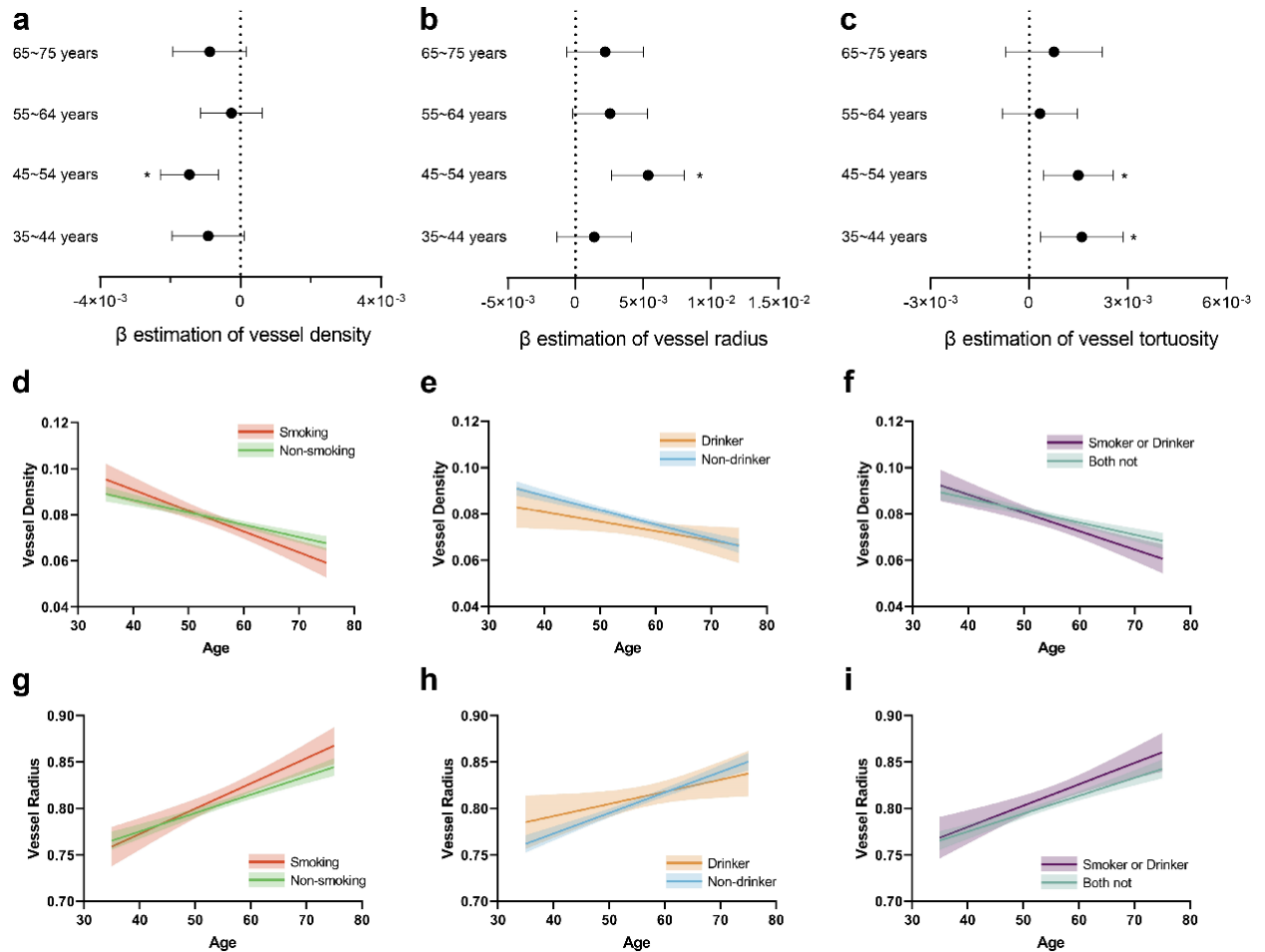


553

554

555 **Figure 2. Association of cerebrovascular morphology with age and cerebrovascular risk**
 556 **factors.**

557 (a)~(c) Regression results between age and cerebrovascular morphologies, including vessel
 558 density, vessel radius and vessel tortuosity, in different age groups. (d)~(f) Association between
 559 vessel density and age in different groups (smoking and non-smoking, drinker and non-drinker,
 560 smoker or drinker and both not). Shaded area represents the 95% confidence interval. (g)~(i)
 561 Association between vessel radius and age in different groups.



562