

**Robust induction of B cell and T cell responses by a third dose of
inactivated SARS-CoV-2 vaccine**

Yihao Liu^{1#}, Qin Zeng^{2#}, Caiguanxi Deng^{3#}, Mengyuan Li^{2#}, Liubing Li^{4#}, Dayue Liu^{5#}, Jie Mei¹, Ruohui Mo¹, Qian Zhou¹, Min Liu⁴, Sui Peng¹, Ji Wang^{3*}, Hui Zhang^{2,3*}, Haipeng Xiao^{6*}

¹Clinical Trials Unit, The First Affiliated Hospital of Sun Yat-sen University, Guangzhou 510080, People's Republic of China

²Department of Rheumatology and Clinical Immunology, The First Affiliated Hospital of Sun Yat-sen University, Guangzhou, Guangdong, 510080, People's Republic of China

³Institute of Precision Medicine, The First Affiliated Hospital of Sun Yat-sen University, Guangzhou, Guangdong, 510080, People's Republic of China

⁴Department of Laboratory Medicine, The First Affiliated Hospital of Sun Yat-sen University, Guangzhou, Guangdong, 510080, People's Republic of China

⁵Department of Medical Affairs, The First Affiliated Hospital of Sun Yat-sen University, Guangzhou, Guangdong, 510080, People's Republic of China

⁶Department of Endocrinology, The First Affiliated Hospital of Sun Yat-sen University, Guangzhou 510080, People's Republic of China

These authors contributed equally to this work.

*Correspondence to: Haipeng Xiao (xiaohp@mail.sysu.edu.cn), Hui Zhang (zhangh656@mail.sysu.edu.cn), Ji Wang (wangj683@mail.sysu.edu.cn)

S. Table 1. Demographics and vaccination-related adverse events

		Morning group	Afternoon group	Total
Participants, N		25	25	50
Age, mean (SD)		26.88 (4.86)	27.88 (6.93)	27.38 (5.94)
Gender, male (%)		9 (36.0)	11 (44.0)	26 (41.3)
Adverse events,	N (%)	5 (20.0%)	1 (4.0%)	6 (12.0%)
Injection site	Induration, N (%)	1 (4.0%)	0 (0.0%)	1 (2.0%)
symptoms	Swollen, N (%)	1 (4.0%)	0 (0.0%)	1 (2.0%)
Systematic symptoms	Fever, N (%)	2 (8.0%)	0 (0.0%)	2 (4.0%)
	Fatigue, N (%)	2 (8.0%)	1 (4.0%)	3 (6.0%)
Respiratory symptoms	Runny nose, N (%)	1 (4.0%)	0 (0.0%)	1 (2.0%)
	Cough, N (%)	1 (4.0%)	0 (0.0%)	1 (2.0%)
	Sore throat, N (%)	1 (4.0%)	0 (0.0%)	1 (2.0%)

S. Table 2. **Demographics of the COVID-19 convalescent patients**

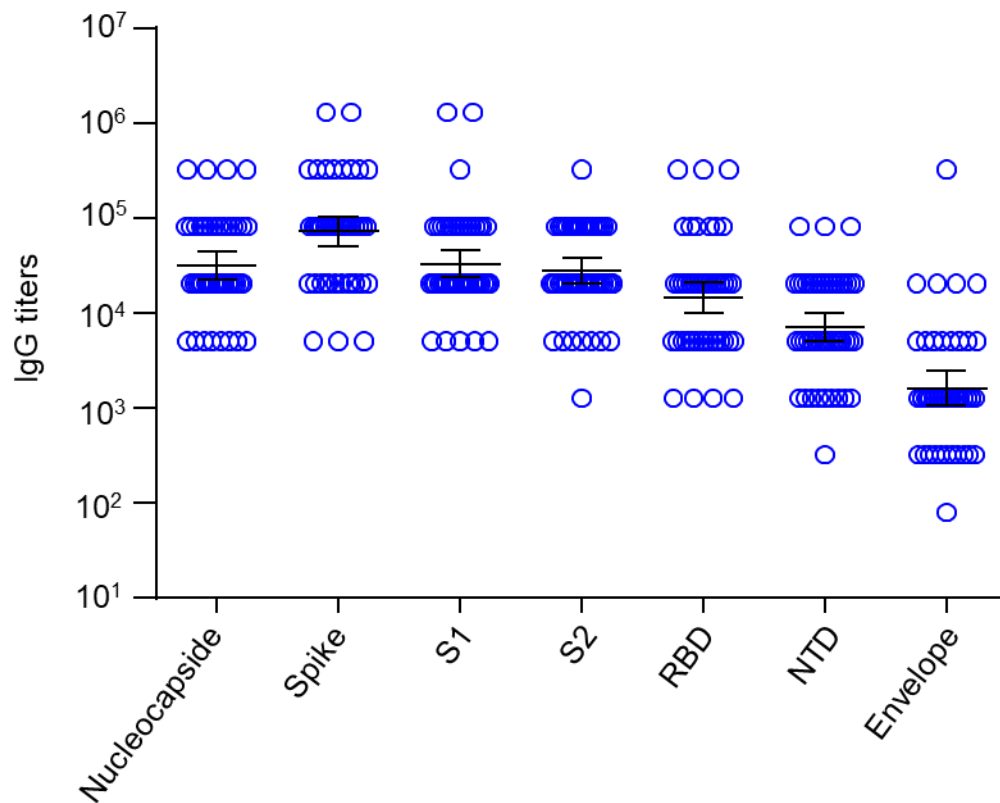
Patient ID	Age range	Gender	Days post-diagnosis	NAbs* (AU/ml)
#1	21-25	F	407	28.67
#2	36-40	F	406	582.92
#3	31-35	F	411	14.79
#4	36-40	M	409	74.09
#5	46-50	F	403	23.55

*NAbs: neutralizing antibodies

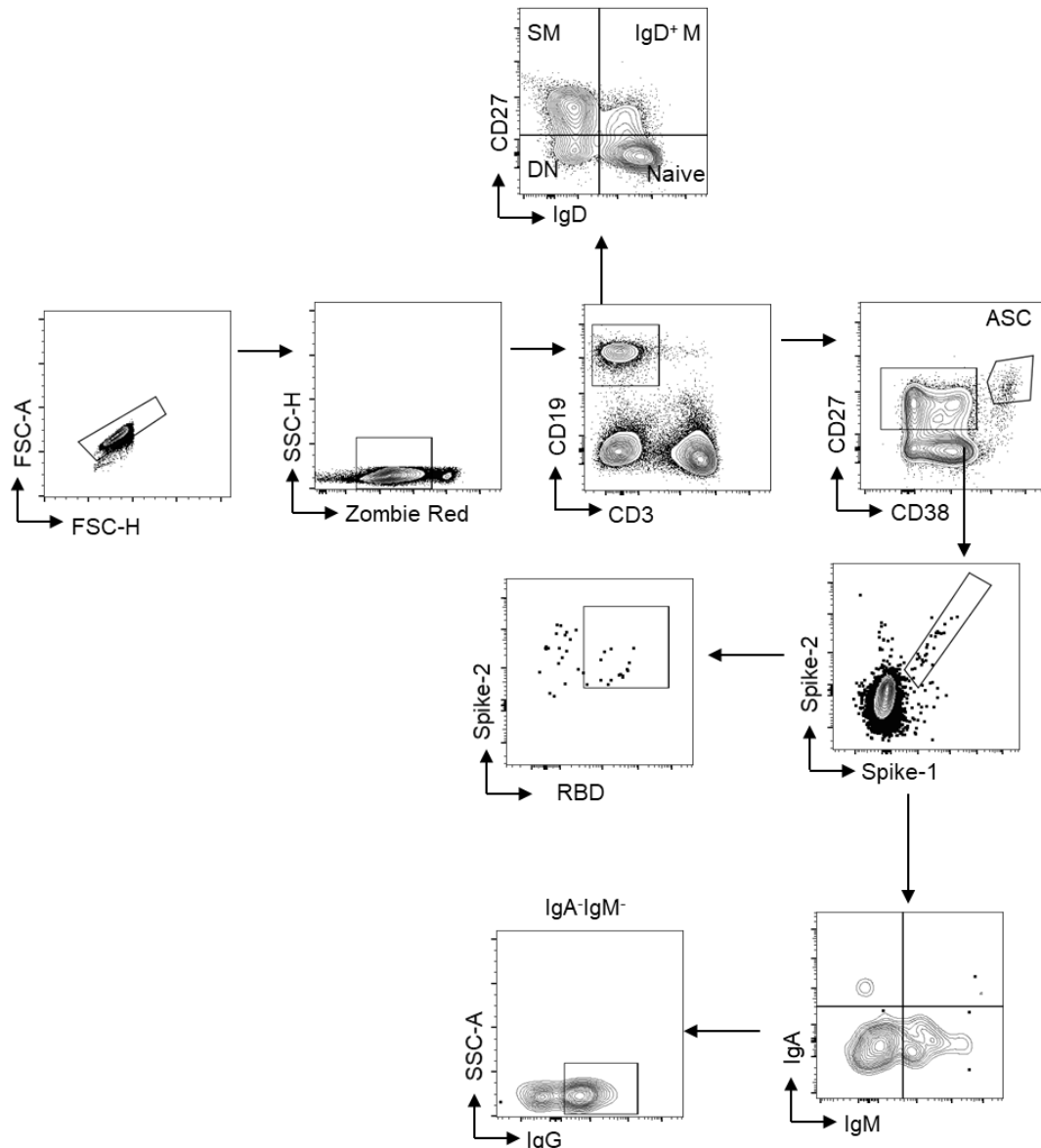
S. Table 3. **Antibodies used in this study.**

Marker	Fluorophore	Vendor	Cat#	Clone
CD4	BV510	Biologend	357420	A161A1
CD8	Percp	Biologend	344708	SK1
CD45RA	BV650	Biologend	304136	HI100
CD3	Pacific Blue™	Biologend	300330	HIT3a
CD137	PE	Biologend	309804	4B4-1
OX40	BV605	Biologend	350028	ACT35
CD69	Super Bright 436	Invitrogen	62-0699-42	FN50
CCR7	APC/cy7	Biologend	353212	G043H7
CD19	PE/cy7	Biologend	302216	HIB19
PD-1	PE/cy7	Biologend	367414	NAT105
CXCR5	BV711	Biologend	356934	J252D4
CD27	AF700	Biologend	356416	M-T271
IgD	FITC	Biologend	348206	IA6-2
CD38	BV650	Biologend	356620	HB-7
IgM	BV605	Biologend	314524	MHM-88
IgG	AF647	Biologend	302216	HIB19
IgA	PE	Biologend	333504	HM47
Zombie	Zombie Red	Biologend	423110	—
Streptavidin	BV421	Biologend	405226	—
Streptavidin	BV510	Biologend	405233	—
Streptavidin	BV785	Biologend	405249	—

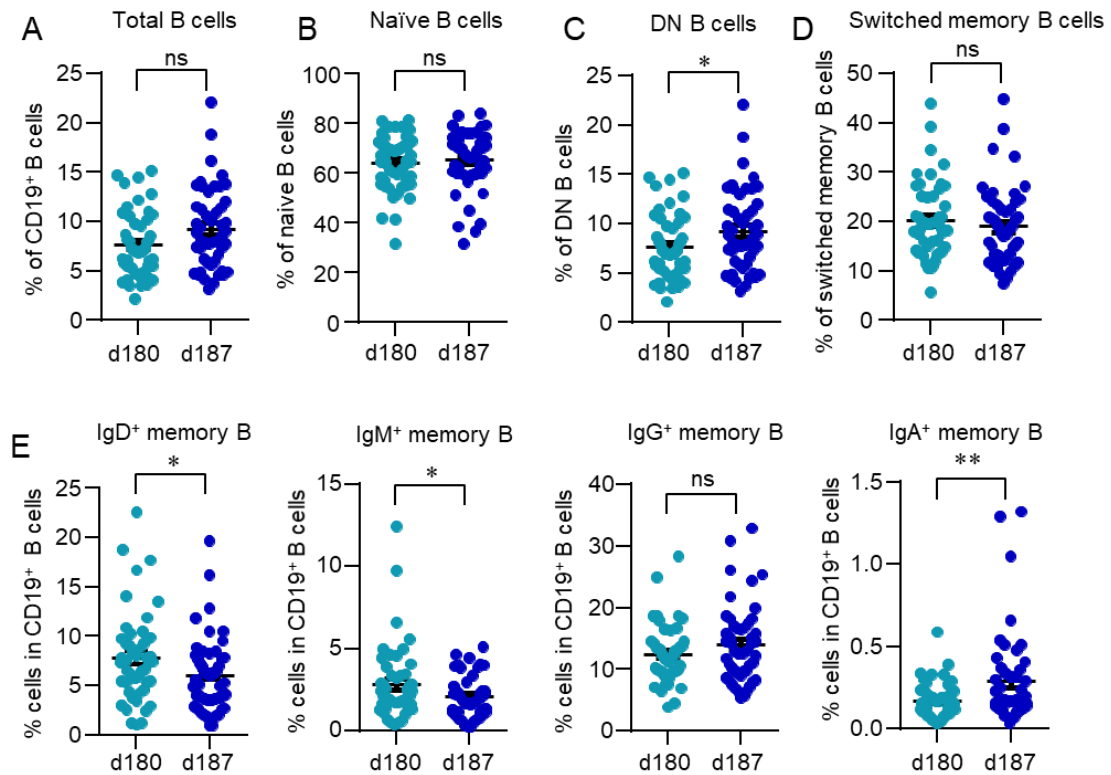
Supplementary Figures and legends



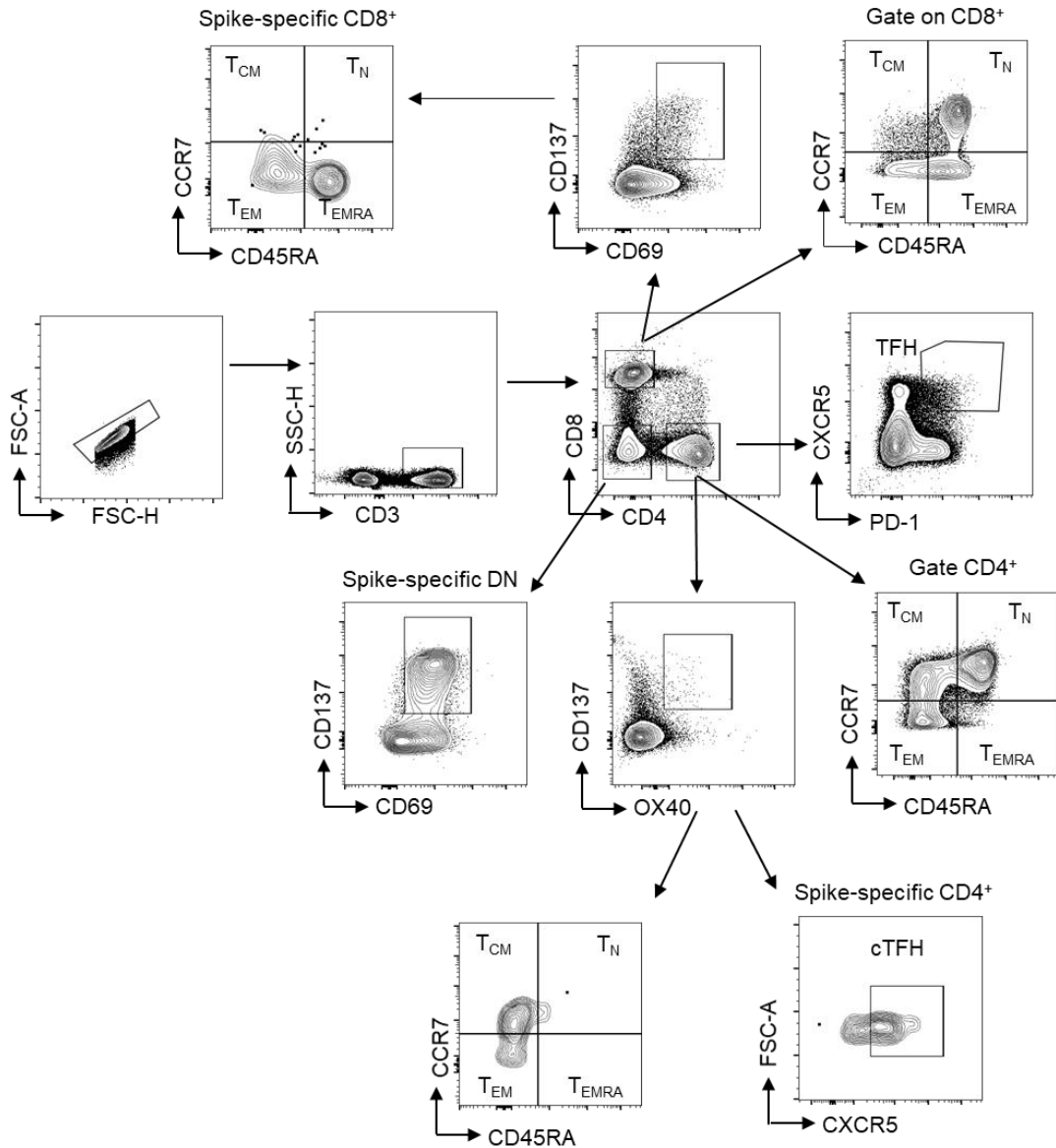
Supplementary Fig. 1. **Antibody spectrum induced by inactivated vaccine BBIBP-CorV.** Study was carried out as in Fig.1. Antibodies against SARS-CoV-2 nucleocapsid, spike, spike S1, spike S2, receptor-binding domain (RBD), spike N terminal domain (NTD) and envelope in the serum samples from day 194 were measured by ELISA (n=50).



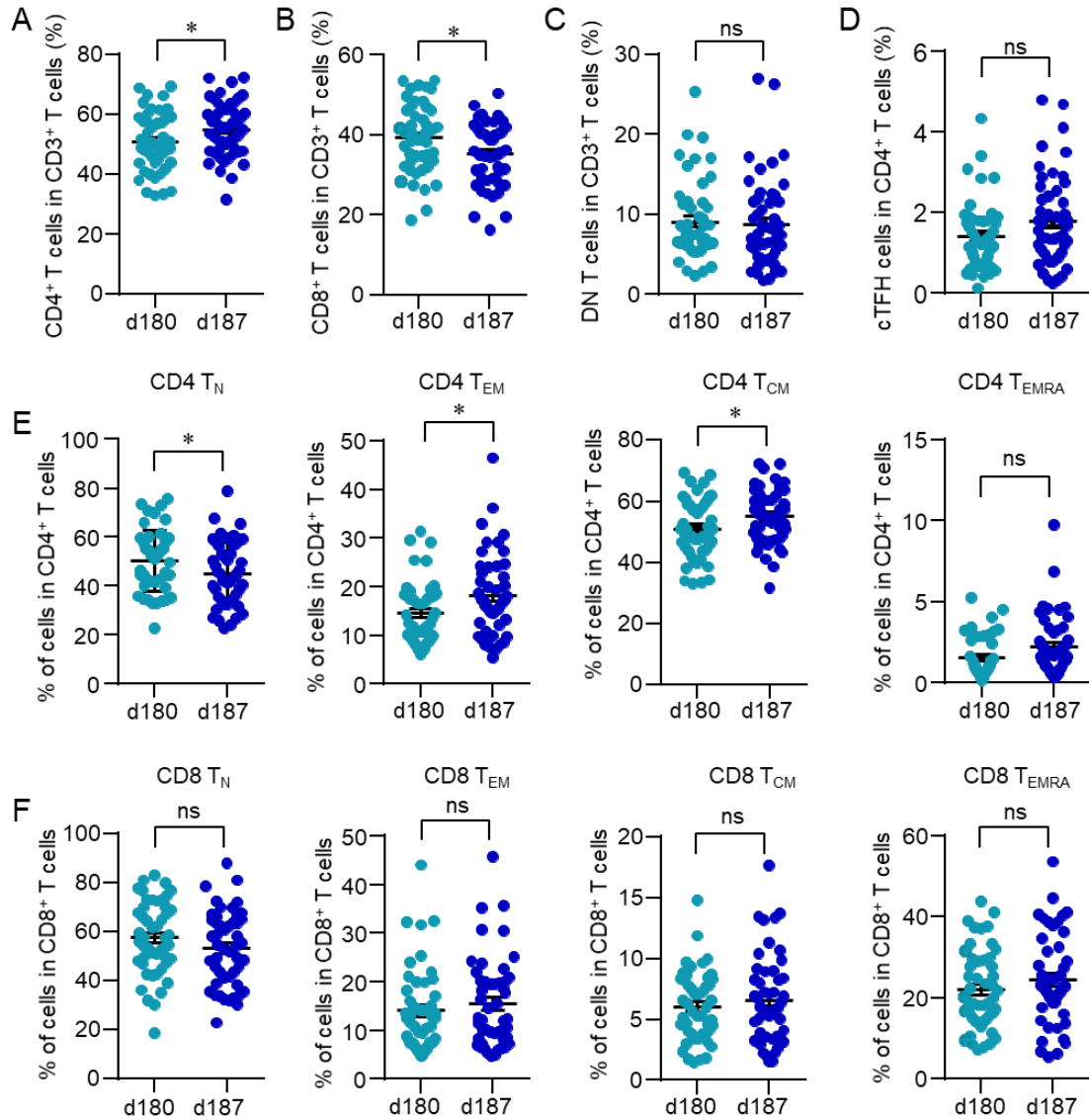
S. Fig. 2. **Gating strategy for B cell analysis.** PBMCs were collected on day (d) 180 before the third dose and d187 after the third dose vaccination. Cells were stained with antibodies against CD3, CD19, CD27, IgD, IgM, IgG, IgA and CD38. Dead cells were first gated out by gating on Zombie Red⁻ population. Cells were then gated on CD19⁺ B cells for further analysis: naïve B cells: IgD⁺CD27⁻, IgD⁺ memory B cells: IgD⁺CD27⁺, switched memory B cells: IgD⁻CD27⁺, double-negative (DN) B cells: IgD⁻CD27⁻, antibody-secreting cells (ASC): CD38⁺CD27⁺.



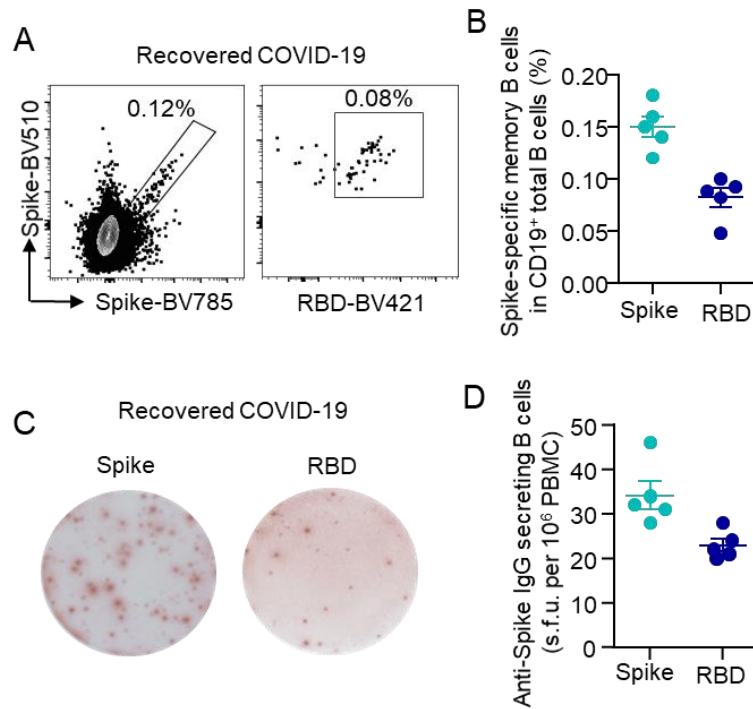
S. Fig. 3. **B cell response to a third dose of inactivated SARS-CoV-2 vaccine.** Blood samples were collected on day (d) 180 and d187. Data were acquired by flow cytometry. The gating strategy is shown in S. Fig. 2. B cell subsets were summarized and shown as dot plots. Data are expressed mean \pm SEM. *p<0.05, **p<0.01. Comparisons were done by Student's t test. ns: not significant.



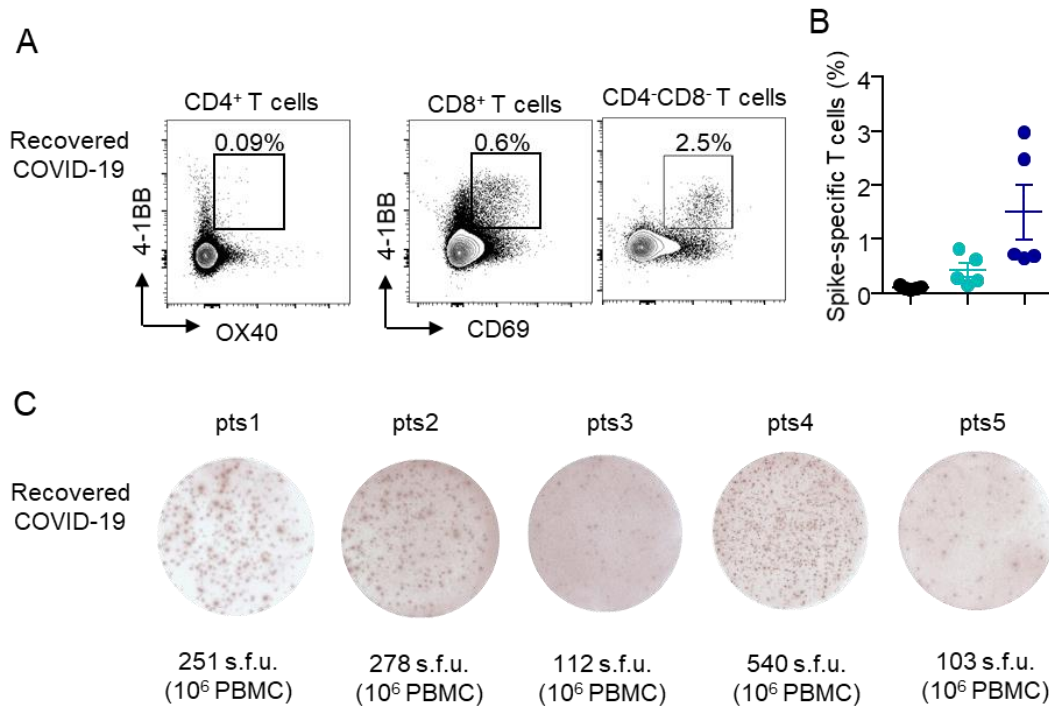
S. Fig. 4. **Gating strategy for T cell analysis.** PBMCs were collected on day (d) 180 before the third dose and d187 after the third dose vaccination. Cells were stained with antibodies against CD3, CD4, CD8, IgD, IgM, IgG, IgA and CD38. T cell phenotyping: TFH cells: CD4⁺CXCR5⁺PD-1⁺, Spike-specific CD4⁺ T cells: OX40⁺4-1BB⁺, Spike-specific CD8⁺ T cells: CD69⁺4-1BB⁺, naïve T cells (T_N): CD45RA⁺CCR7⁺, effector memory T cells (T_{EM}): CD45RA⁻CCR7⁻, central memory T cells (T_{CM}): CD45RA⁻CCR7⁺, terminally differentiated T cells (T_{EMRA}): CD45RA⁺CCR7⁻.



S. Fig. 5. **T cell response to a third dose of inactivated SARS-CoV-2 vaccine.** Blood samples were collected on day (d) 180 and d187. Data were acquired by flow cytometry. The gating strategy is shown in S. Fig. 4. T cell subsets were summarized and shown as dot plots. Data are expressed mean \pm SEM. * $p < 0.05$, Comparisons were done by Student's t test. ns: not significant.



S. Fig. 6. **SARS-CoV-2-specific memory B cells in COVID-19 convalescent patients.** PBMCs were isolated from patients who have recovered from COVID-19 over 13 months. (A, B) Spike- and receptor-binding domain (RBD)-specific memory B cells were measured by flow cytometry. Representative FACS plots showing spike- and RBD-specific memory B cells. Data were summarized from 5 independent samples. (C, D) SARS-CoV-2-specific memory B cells were further detected by ELISpot. Images of ELISpot wells were shown. Spot-forming units (s.f.u) were summarized and adjusted to 10⁶ PBMCs.



S. Fig. 7. **SARS-CoV-2-specific T cells in COVID-19 convalescent patients.**

PBMCs were isolated as in S. Fig. (A, B) PBMCs were stimulated with spike peptide pool (2 μ g/ml) for 12 h. Specific-specific CD4⁺ T cells (OX40⁺4-1BB⁺), CD8⁺ T cells (CD69⁺4-1BB⁺) and CD3⁺CD4⁻CD8⁻ T cells (CD69⁺4-1BB⁺) were measured by flow cytometry. Data were summarized from 5 independent samples. (C) SARS-CoV-2-specific T cells were further detected by IFN- γ ELISpot. Images of ELISpot wells of each samples were shown. Spot-forming units (s.f.u) were summarized and adjusted to 10⁶ PBMCs.