

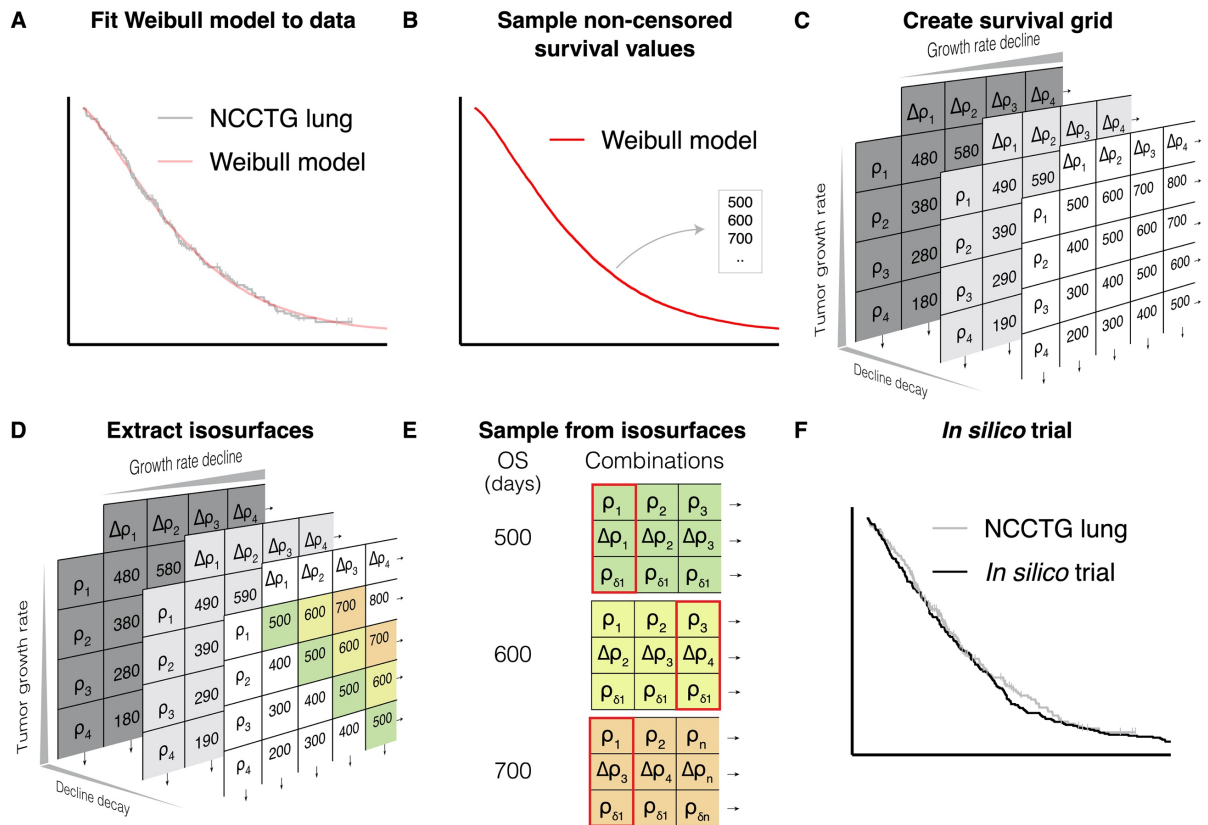
## SUPPLEMENTARY INFORMATION

### TABLES

*Supplementary table 1: R packages*

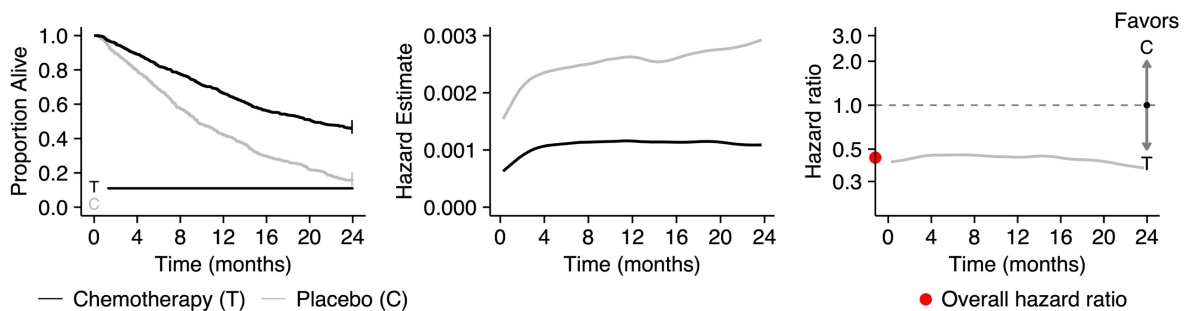
<b>R Package</b>	<b>Version</b>	<b>Functionality</b>
Tidyverse collection of packages (incl. readxl, furrr)		Data wrangling
survival	3.2-7	Creation of Kaplan Meier survival curve
survminer	0.4.8	Visualization of Kaplan Meier survival curve
flexsurv	1.1.1	Fit a Weibull model to survival datasets
IPDfromKM	0.1.10	Extract individual patient data from Kaplan Meier survival curves
oce	1.3-0	Extract isosurfaces: trilinear interpolation in a 3D array
bshazard	1.1	Non-parametric estimation of the hazard function from a survival object
patchwork	1.1.1	Compose panel plots

**FIGURES**



**Supplementary figure 1: Implementation of the fitting procedure.**

(A) We fitted a Weibull distribution to a survival dataset (i.e., the NCCTG lung cancer dataset), and (B) sampled survival values (n=228) from the Weibull distribution to obtain non-censored survival data. (C) Next, a 3D grid with survival values was generated using a grid search on three tumor-related parameters: the tumor growth rate, the growth rate decline, and the decline decay. (D) Parameter combinations leading to similar survival values (i.e., isosurfaces) are extracted from the grid using the marching cubes algorithm. (E) We sampled parameter combinations from isosurfaces that corresponded with the sampled survival values from the Weibull model and (F) simulated survival of patients with this selection of parameter combinations.



**Supplementary figure 2: A mechanism-based *in silico* chemotherapy trial can adhere to the proportional hazard assumption.**

A 1:1 randomized *in silico* chemotherapy trial (n = 800 per arm) with a continuous and constant treatment effect – reduction of tumor growth to 70% of its initial growth – adheres to the proportional hazard assumption, as is indicated by a constant hazard ratio over time.