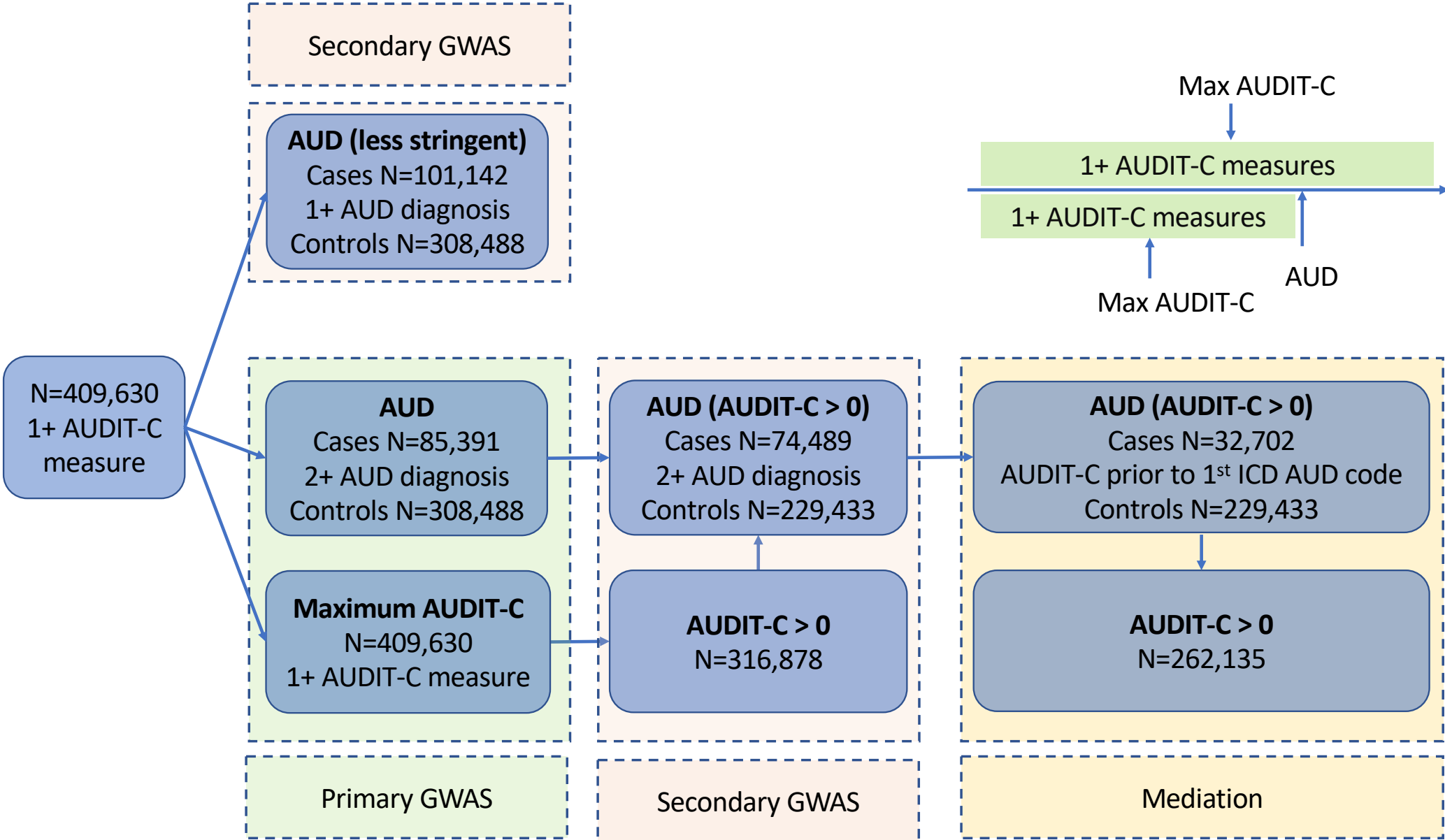
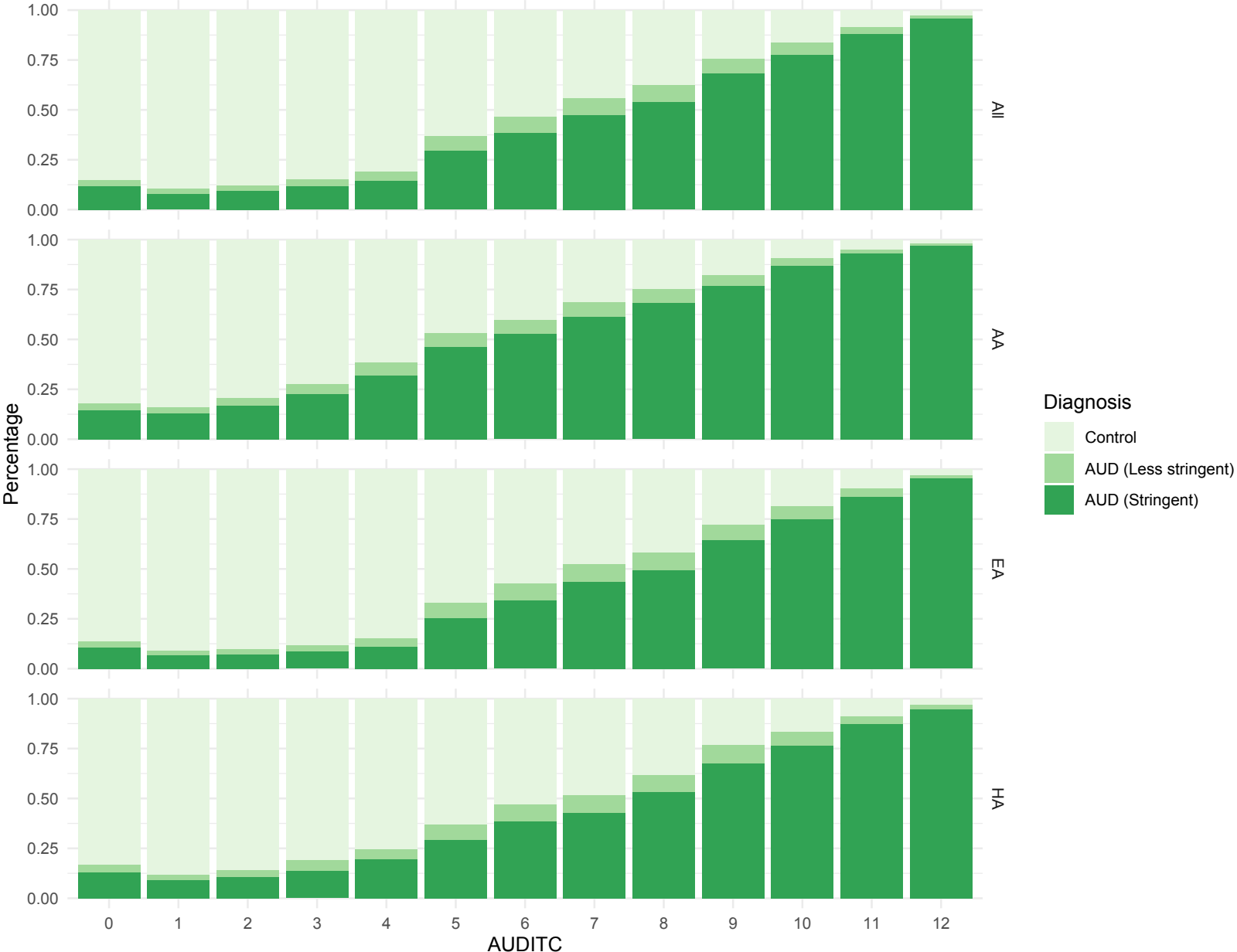


Supplemental Figure 1: Analytic methods

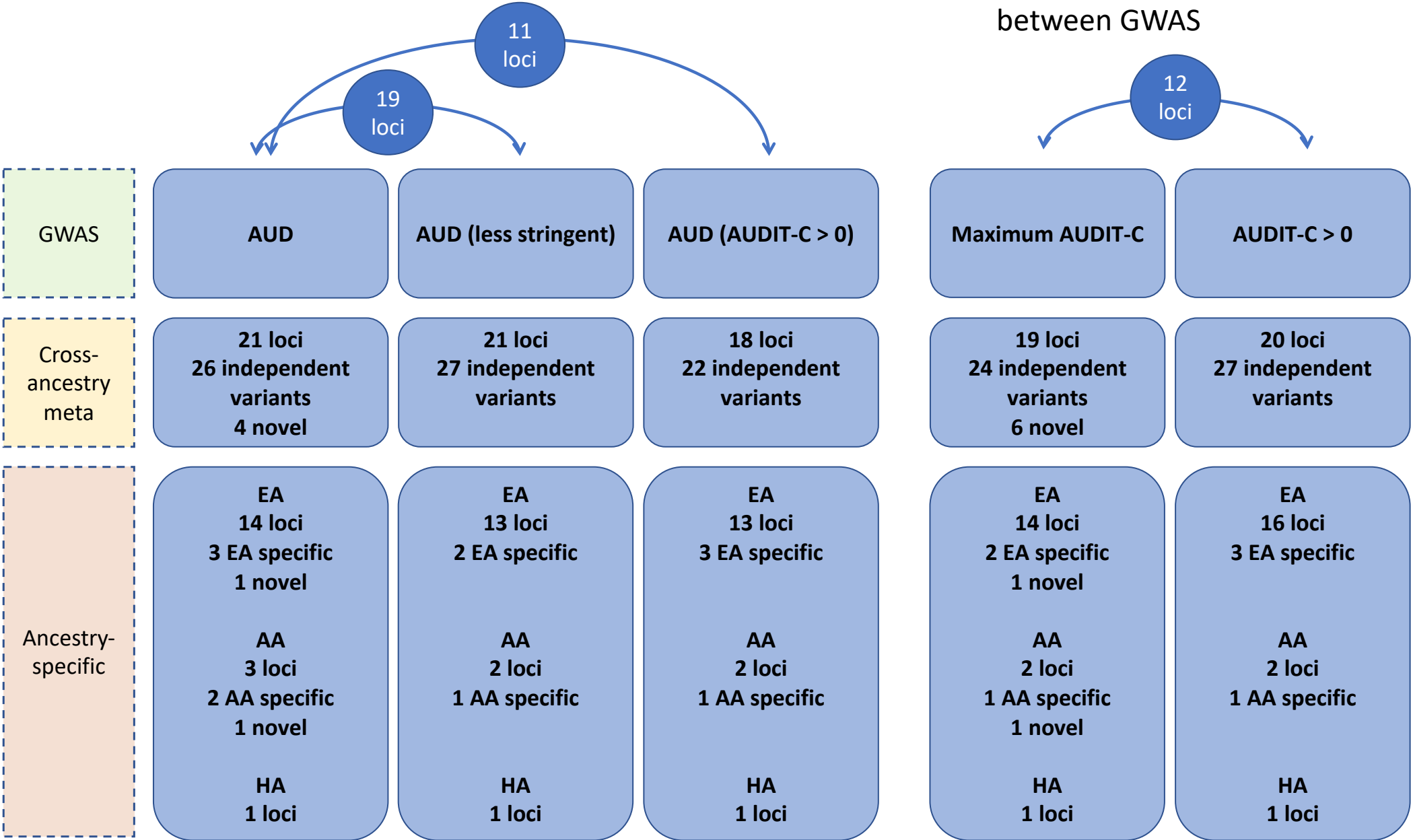


Supplemental Figure 2: AUDIT-C scores

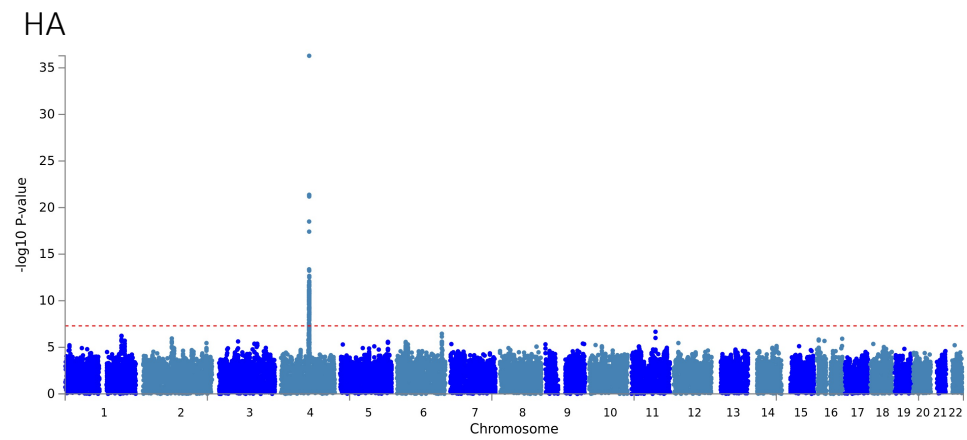
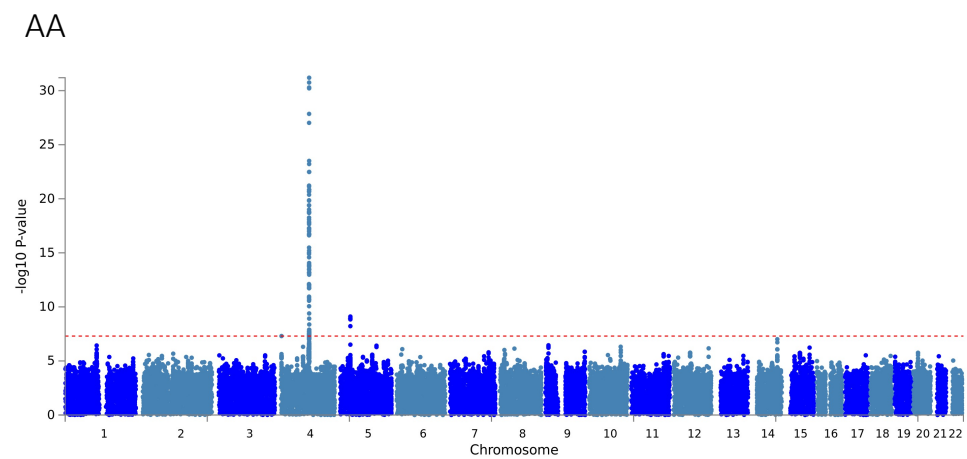
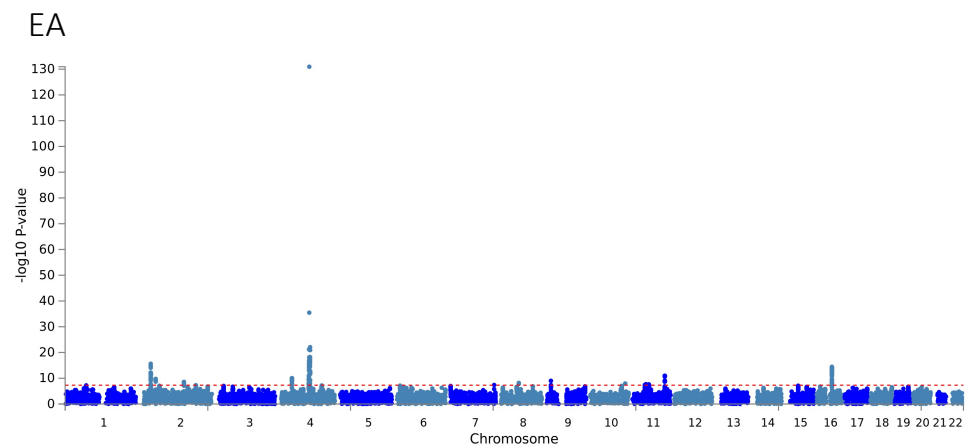


Supplemental Figure 3: Summary of GWAS results

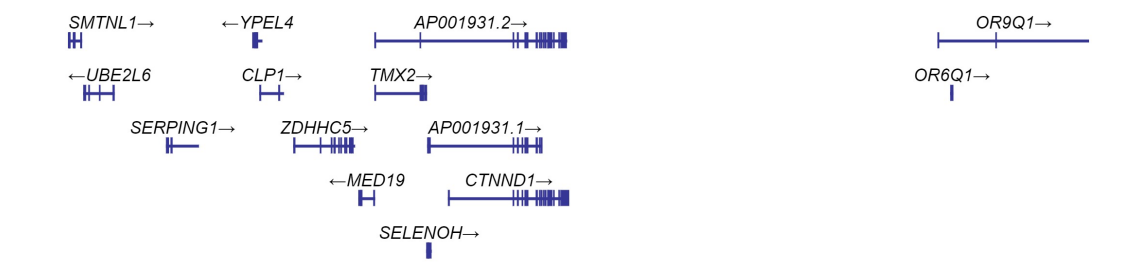
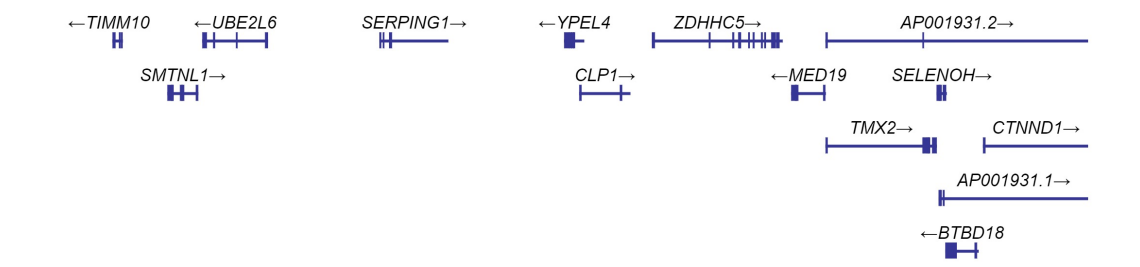
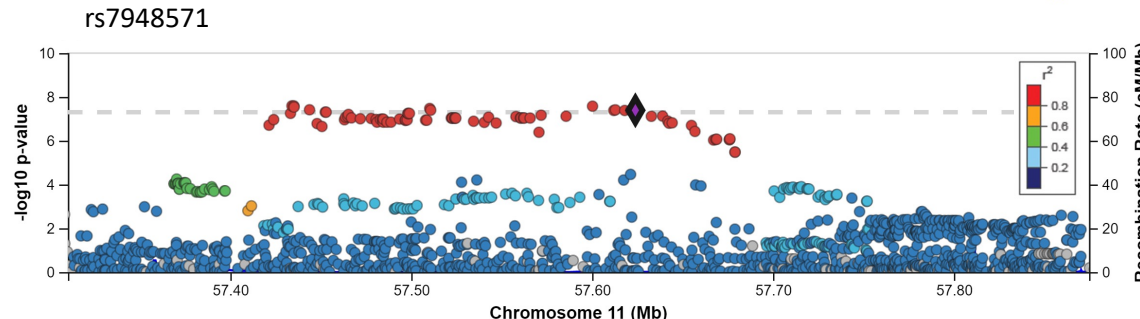
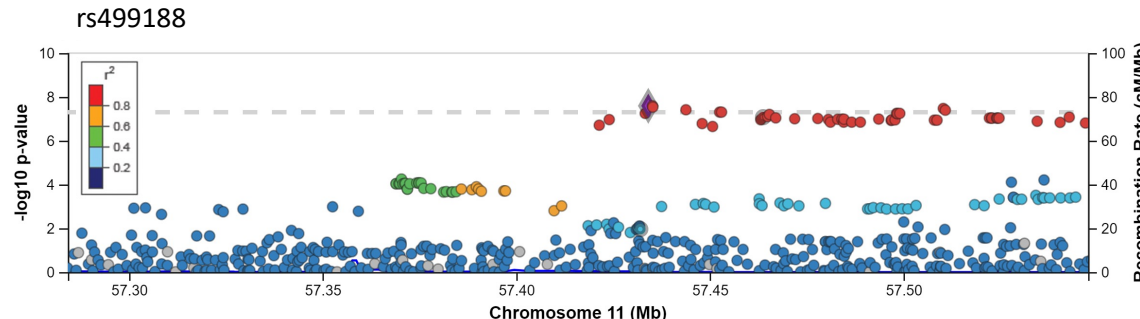
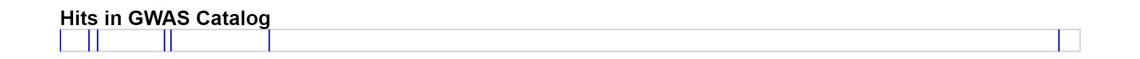
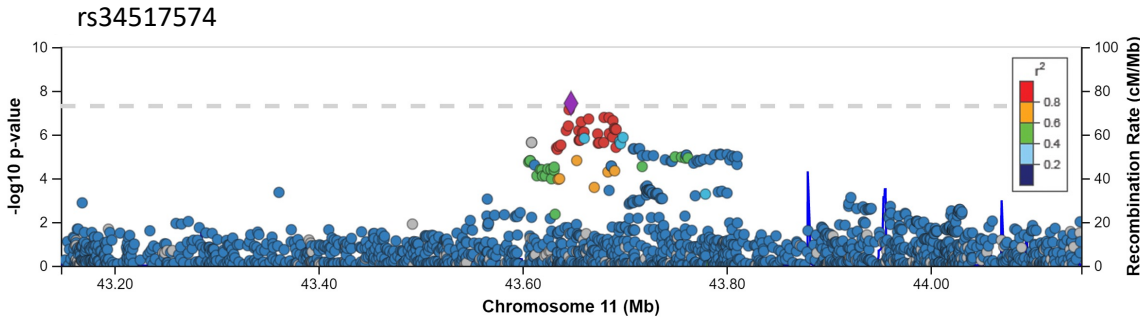
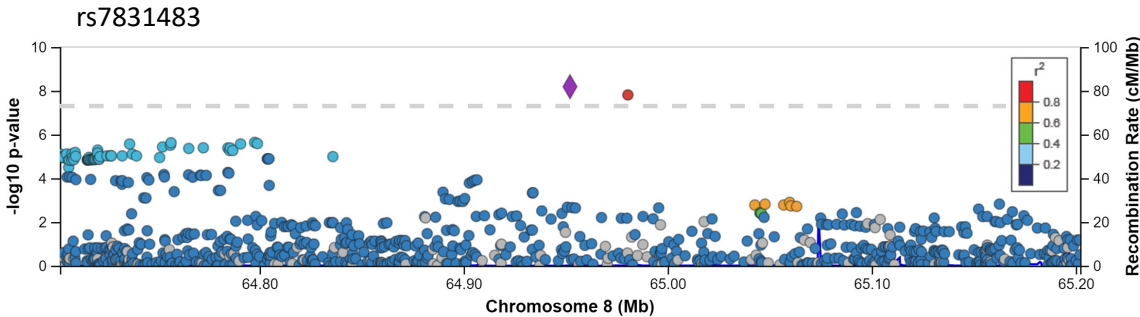
Numbers in circles at top represent number of GWS loci overlapping between GWAS



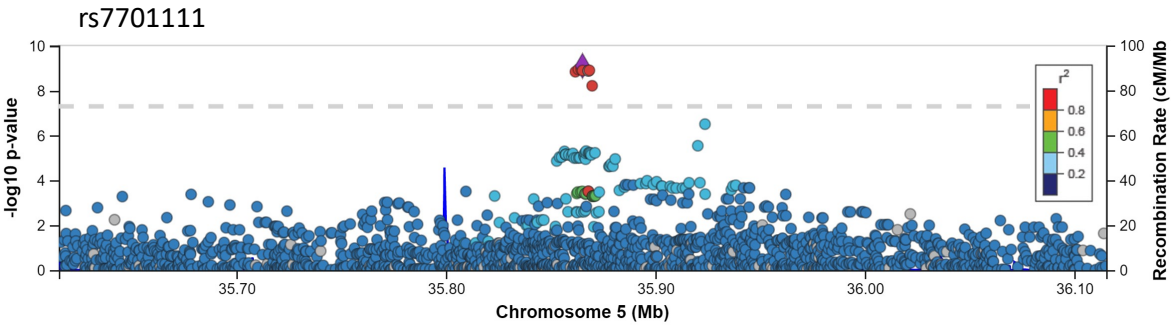
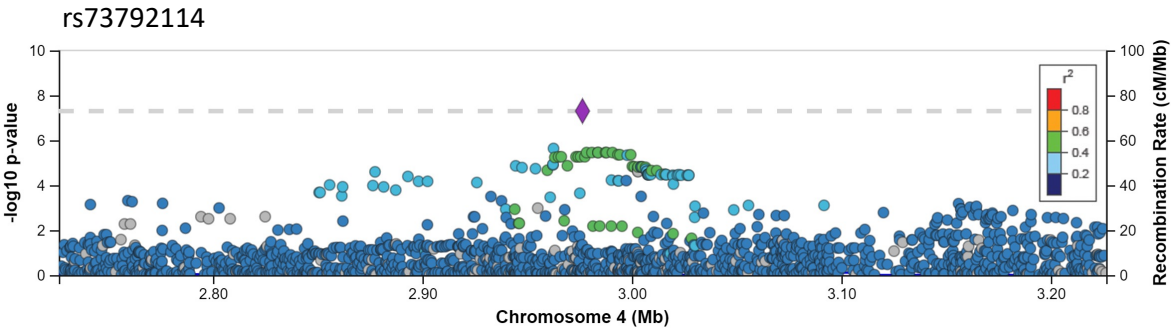
Supplemental Figure 4: Manhattan plots for AUD by ancestry



Supplemental Figure 5: Locus zoom plots for ancestry-specific variants associated with AUD in EAs



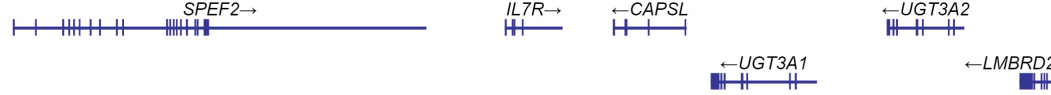
Supplemental Figure 6: Locus zoom plots for ancestry-specific variants associated with AUD in AAs



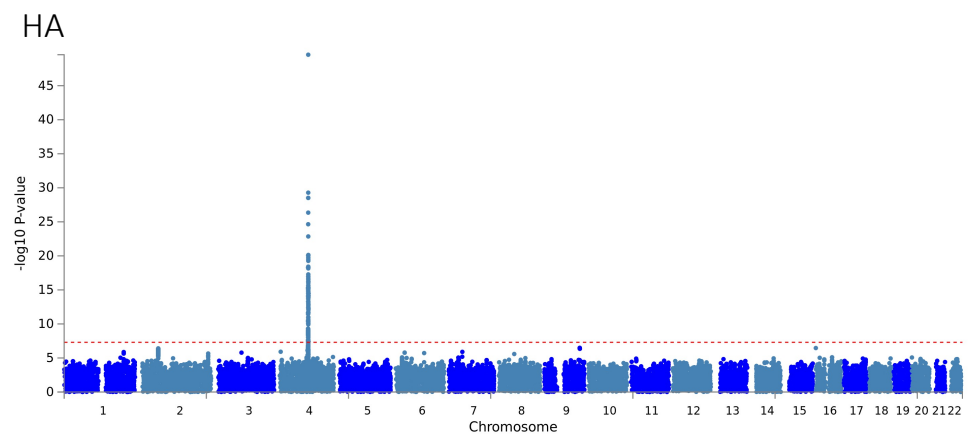
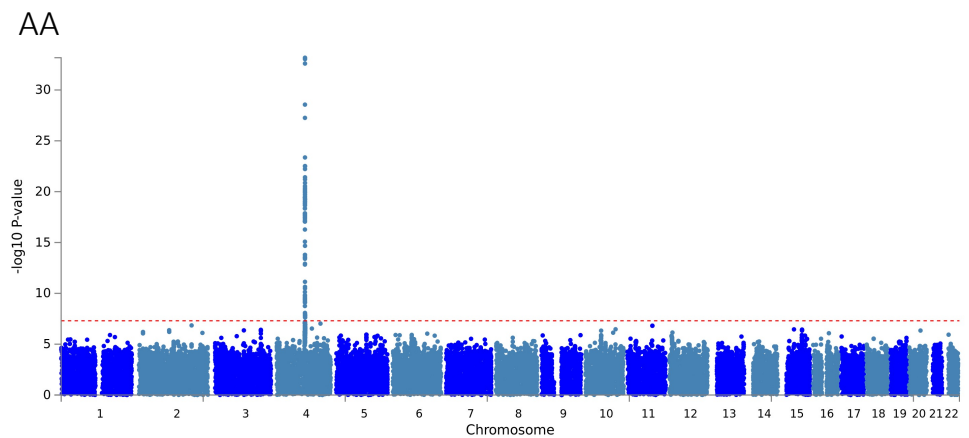
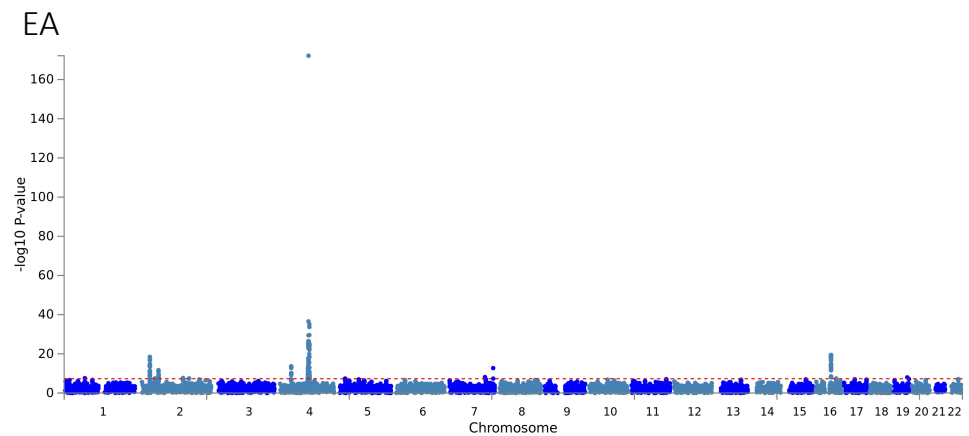
Hits in GWAS Catalog



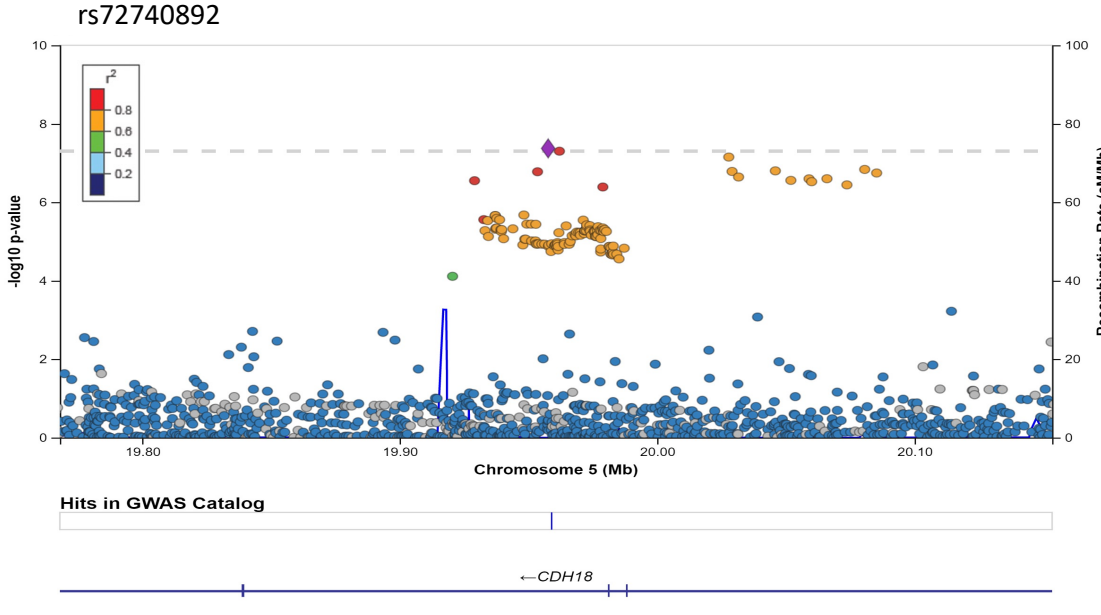
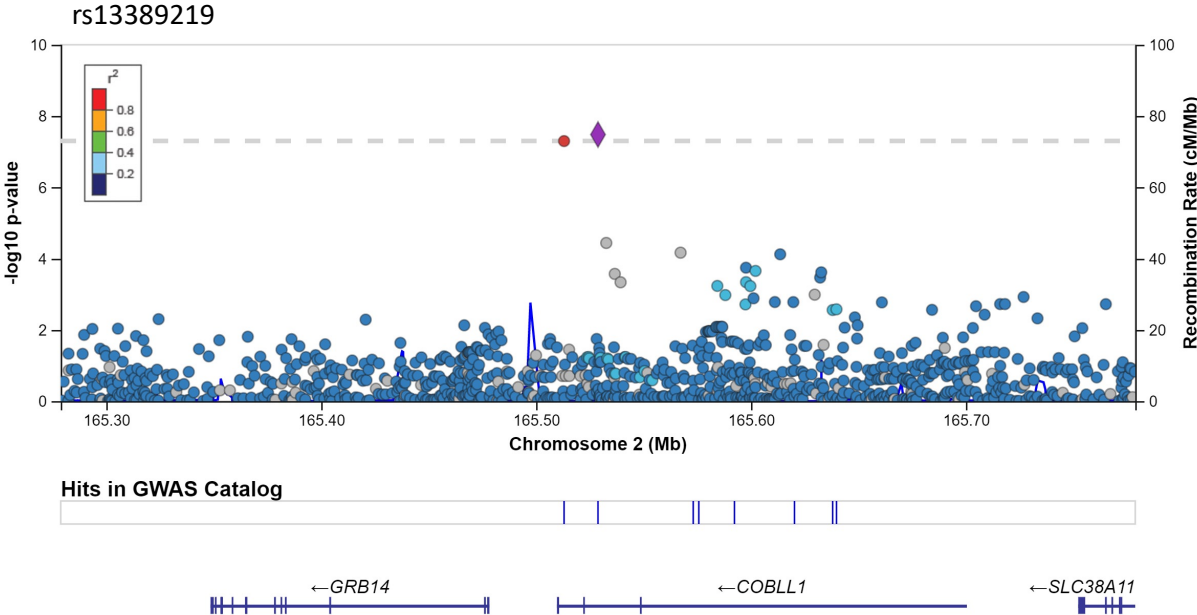
Hits in GWAS Catalog



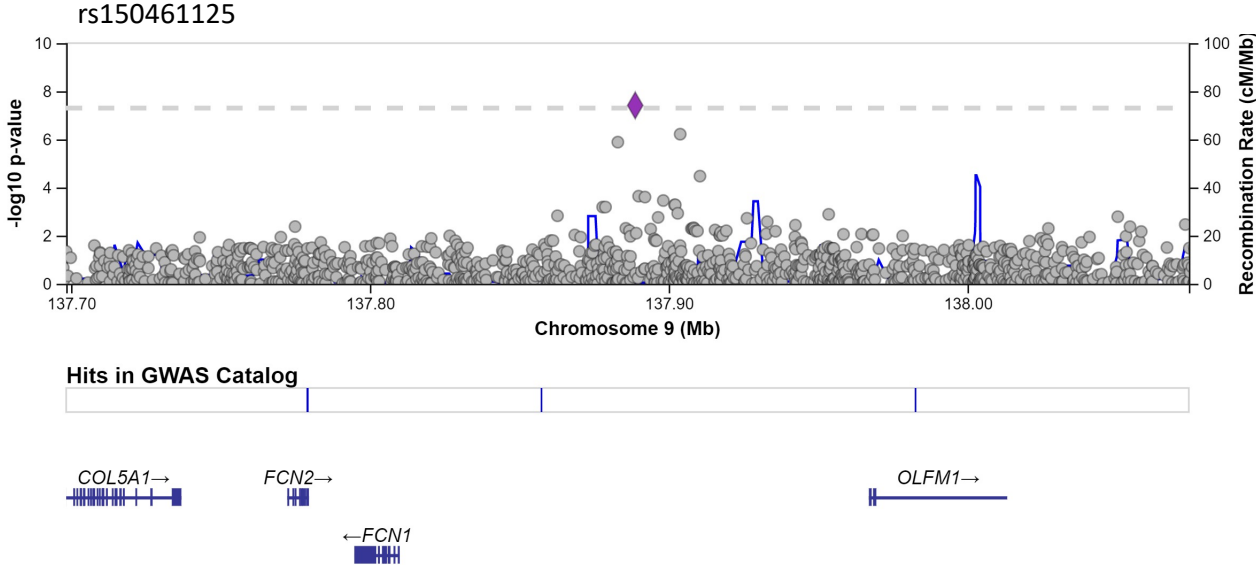
Supplemental Figure 7: Manhattan plots for AUDIT-C by ancestry



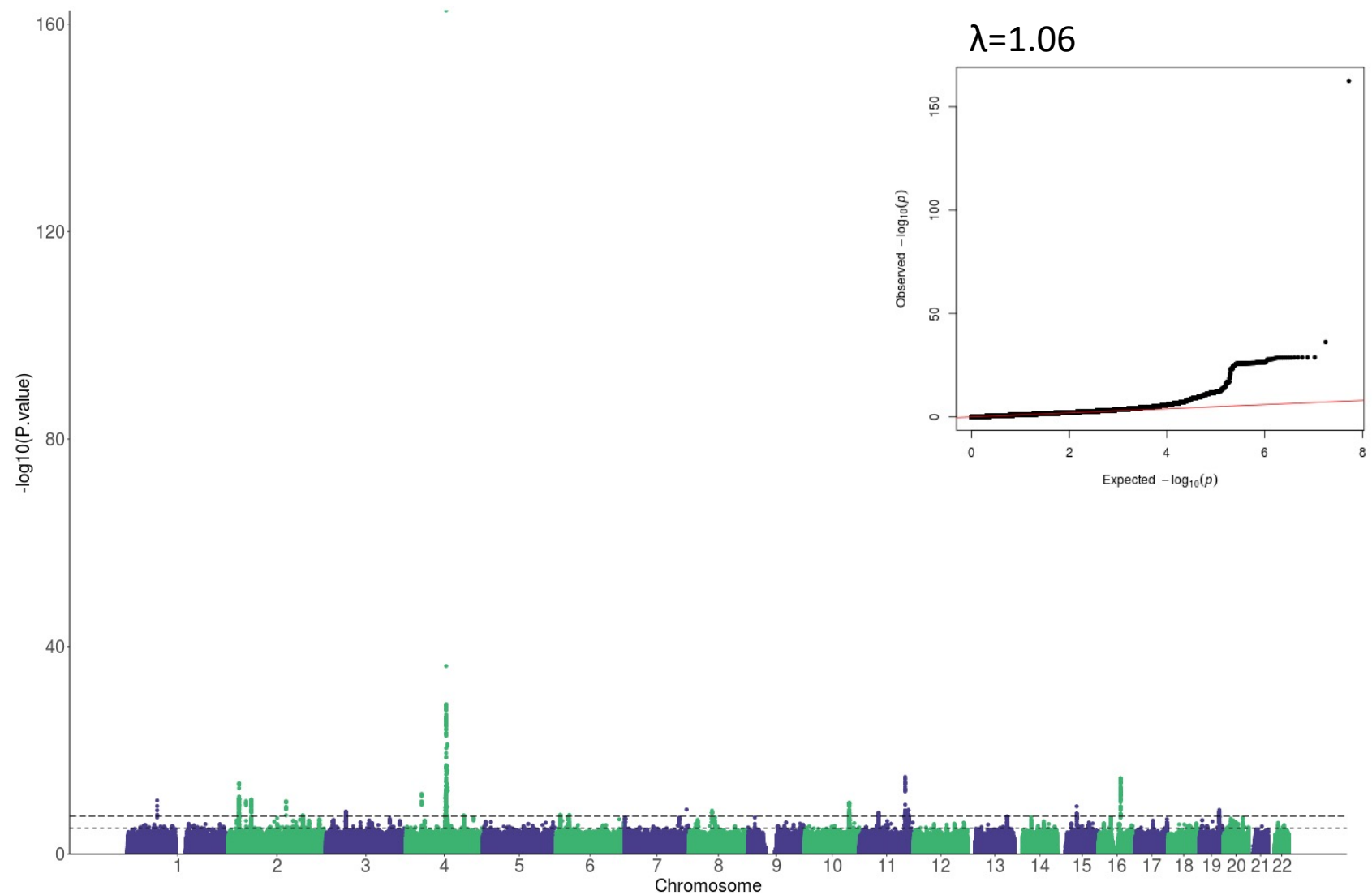
Supplemental Figure 8: Locus zoom plots for ancestry-specific variants associated with AUDIT-C in EAs



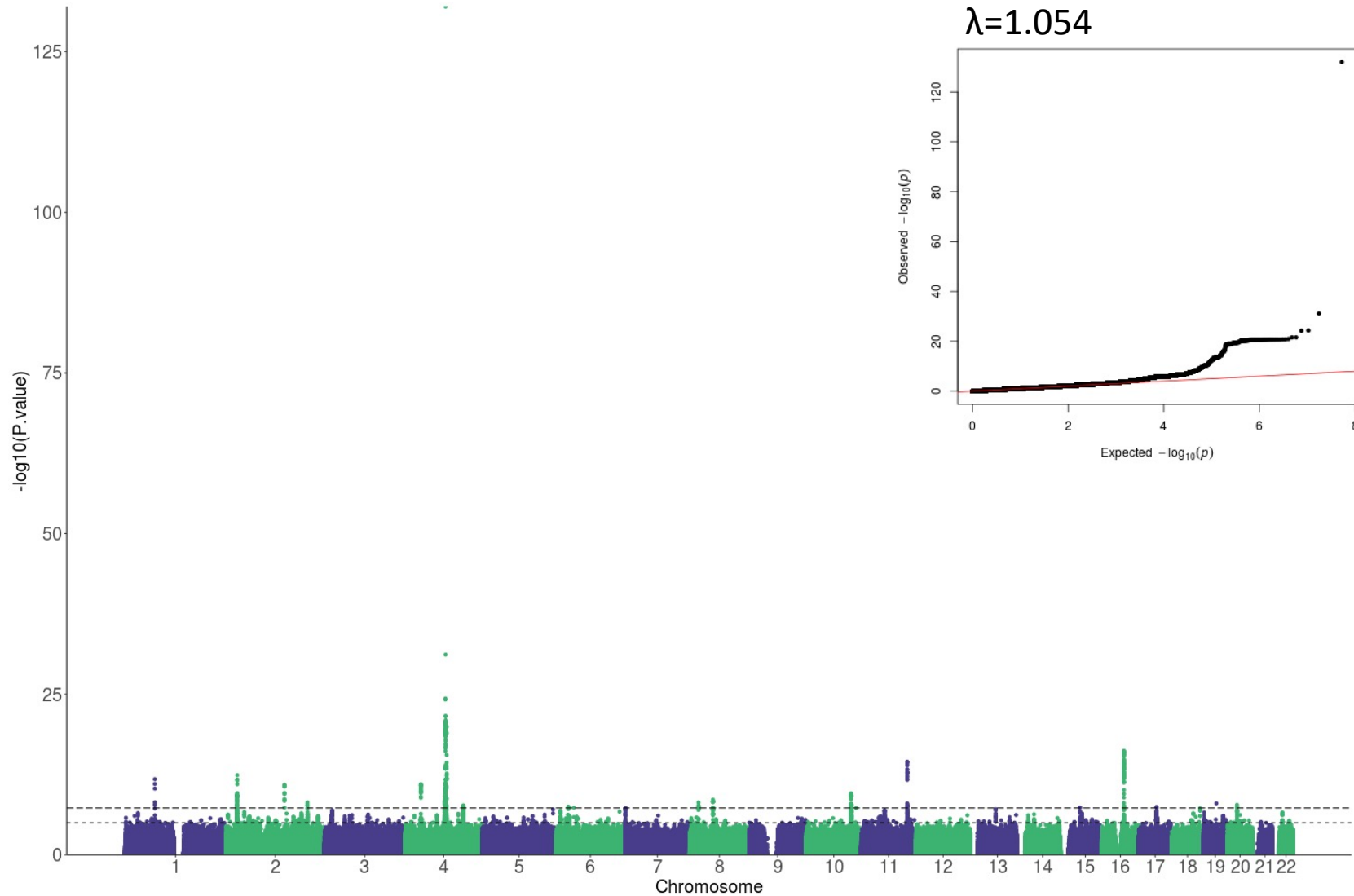
Supplemental Figure 9: Locus zoom plots for ancestry-specific variants associated with AUDIT-C in AAs



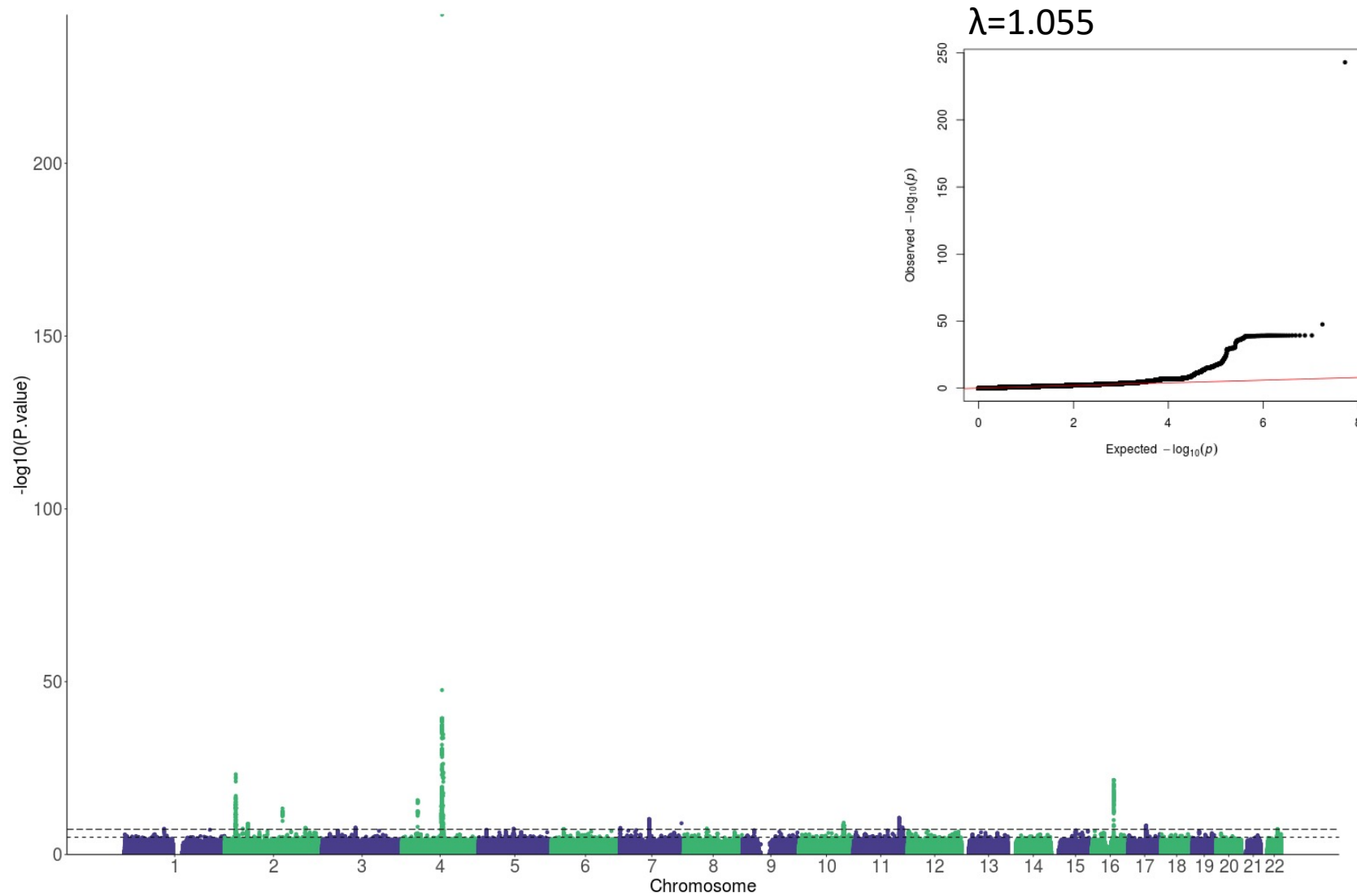
Supplemental Figure 10: Manhattan plot for AUD (Less Stringent)



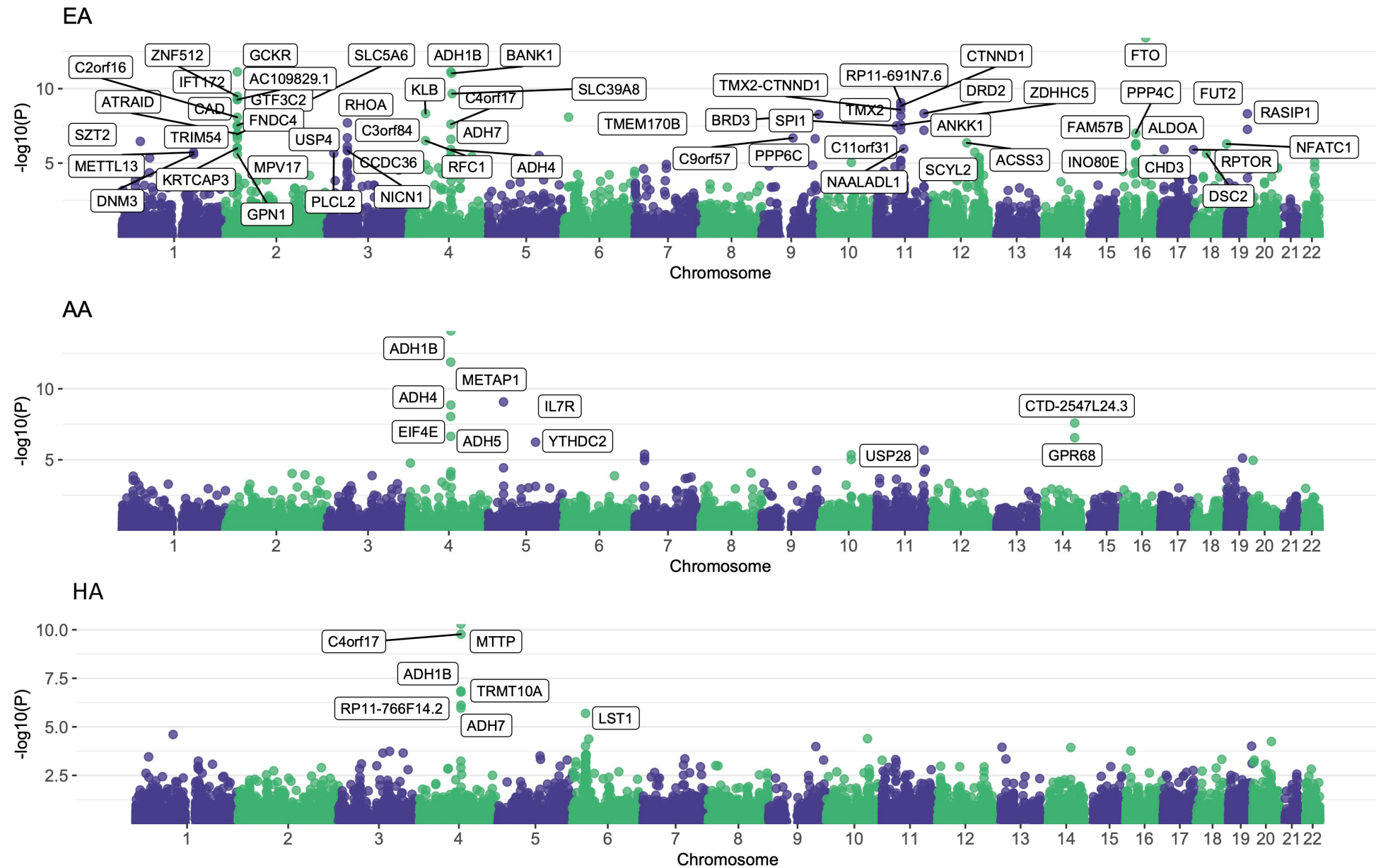
Supplemental Figure 11: Manhattan plot for AUD (Stringent, AUDIT-C>0)



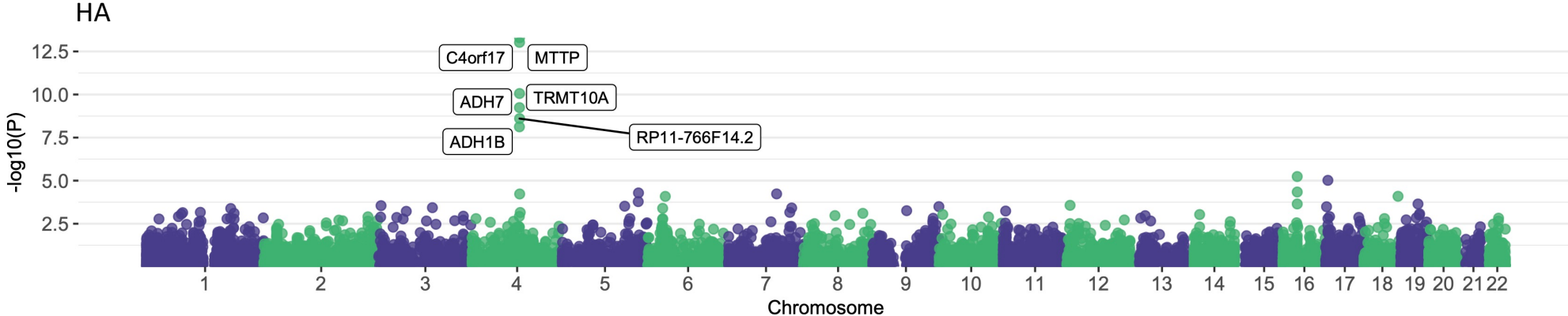
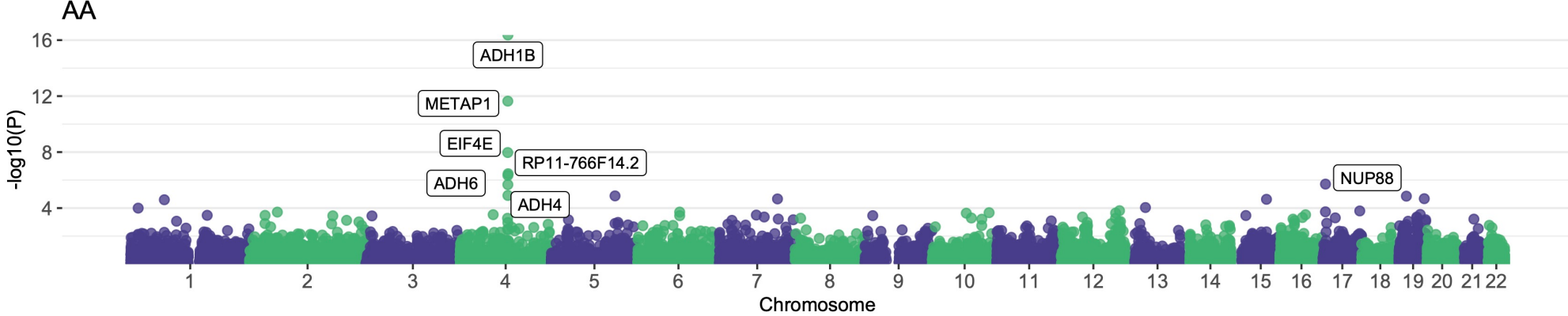
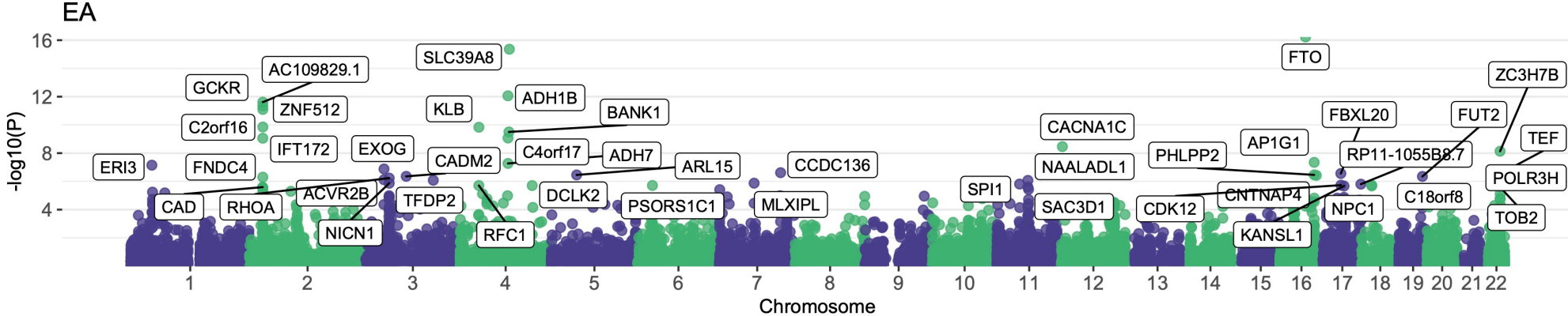
Supplemental Figure 12: Manhattan plot for AUDIT-C>0



Supplemental Figure 13: Gene-based association analyses for AUD



Supplemental Figure 14: Gene-based association analyses for AUDIT-C



Supplemental Figure 15: Genetic correlation between phenotypes

