

Data Supplement

eTable 1. PRISMA Checklist reporting necessary items.

Section/topic	#	Checklist item	Reported on page #
TITLE			
Title	1	Identify the report as a systematic review, meta-analysis, or both.	1
ABSTRACT			
Structured summary	2	Provide a structured summary including, as applicable: background; objectives; data sources; study eligibility criteria, participants, and interventions; study appraisal and synthesis methods; results; limitations; conclusions and implications of key findings; systematic review registration number.	2
INTRODUCTION			
Rationale	3	Describe the rationale for the review in the context of what is already known.	3
Objectives	4	Provide an explicit statement of questions being addressed with reference to participants, interventions, comparisons, outcomes, and study design (PICOS).	3
METHODS			
Protocol and registration	5	Indicate if a review protocol exists, if and where it can be accessed (e.g., Web address), and, if available, provide registration information including registration number.	-
Eligibility criteria	6	Specify study characteristics (e.g., PICOS, length of follow-up) and report characteristics (e.g., years considered, language, publication status) used as criteria for eligibility, giving rationale.	5
Information sources	7	Describe all information sources (e.g., databases with dates of coverage, contact with study authors to identify additional studies) in the search and date last searched.	4
Search	8	Present full electronic search strategy for at least one database, including any limits used, such that it could be repeated.	4
Study selection	9	State the process for selecting studies (i.e., screening, eligibility, included in systematic review, and, if applicable, included in the meta-analysis).	5
Data collection process	10	Describe method of data extraction from reports (e.g., piloted forms, independently, in duplicate) and any processes for obtaining and confirming data from investigators.	5
Data items	11	List and define all variables for which data were sought (e.g., PICOS, funding sources) and any assumptions and simplifications made.	5
Risk of bias in individual studies	12	Describe methods used for assessing risk of bias of individual studies (including specification of whether this was done at the study or outcome level), and how this information is to be used in any data synthesis.	5
Summary measures	13	State the principal summary measures (e.g., risk ratio, difference in means).	6
Synthesis of results	14	Describe the methods of handling data and combining results of studies, if done, including measures of consistency (e.g., I^2) for each meta-analysis.	6 – 7

Section/topic	#	Checklist item	Reported on page #
Risk of bias across studies	15	Specify any assessment of risk of bias that may affect the cumulative evidence (e.g., publication bias, selective reporting within studies).	6
Additional analyses	16	Describe methods of additional analyses (e.g., sensitivity or subgroup analyses, meta-regression), if done, indicating which were pre-specified.	Data Supplement
RESULTS			
Study selection	17	Give numbers of studies screened, assessed for eligibility, and included in the review, with reasons for exclusions at each stage, ideally with a flow diagram.	6 -7
Study characteristics	18	For each study, present characteristics for which data were extracted (e.g., study size, PICOS, follow-up period) and provide the citations.	6 -7
Risk of bias within studies	19	Present data on risk of bias of each study and, if available, any outcome level assessment (see item 12).	Data Supplement
Results of individual studies	20	For all outcomes considered (benefits or harms), present, for each study: (a) simple summary data for each intervention group (b) effect estimates and confidence intervals, ideally with a forest plot.	6 – 10
Synthesis of results	21	Present results of each meta-analysis done, including confidence intervals and measures of consistency.	6 – 10
Risk of bias across studies	22	Present results of any assessment of risk of bias across studies (see Item 15).	Data Supplement
Additional analysis	23	Give results of additional analyses, if done (e.g., sensitivity or subgroup analyses, meta-regression [see Item 16]).	Data Supplement
DISCUSSION			
Summary of evidence	24	Summarize the main findings including the strength of evidence for each main outcome; consider their relevance to key groups (e.g., healthcare providers, users, and policy makers).	11 – 13
Limitations	25	Discuss limitations at study and outcome level (e.g., risk of bias), and at review-level (e.g., incomplete retrieval of identified research, reporting bias).	13 - 14
Conclusions	26	Provide a general interpretation of the results in the context of other evidence, and implications for future research.	14
FUNDING			
Funding	27	Describe sources of funding for the systematic review and other support (e.g., supply of data); role of funders for the systematic review.	14

From: Moher D, Liberati A, Tetzlaff J, Altman DG, The PRISMA Group (2009). Preferred Reporting Items for Systematic Reviews and Meta-Analyses: The PRISMA Statement. PLoS Med 6(7): e1000097. doi:10.1371/journal.pmed1000097

For more information, visit: www.prisma-statement.org.

eTable 2. Number of articles yielded by our search hits on PubMed/Medline.

No.	Search terms	Records
1.	(transcatheter aortic valve replacement) AND (transfemoral)	1476
2.	(transcatheter aortic valve replacement) AND (transaortic)	298
3.	((clinical outcomes) OR (mortality)) AND (transcatheter aortic)	6548
4.	(tavr) AND (access site)	134
5.	(transcatheter aortic valve) AND ((subclavian) OR (transaxillary))	285
6.	(transaortic transcatheter*) AND (cardiovascular outcomes)	210
7.	(((transapical) OR (transfemoral)) OR (subclavian)) AND (transcatheter aortic*) NOT (surgical)	313

eTable 3. Number of articles yielded by our search hits on Cochrane library.

No.	Search terms	Records
1.	"transcatheter aortic valve" AND "mortality" NOT "surgical"	236
2.	"transcatheter aortic valve" AND "transfemoral" OR "transaortic"	269
3.	"transapical" AND "access site" OR "tavr"	465
4.	"transcatheter aortic" AND "cardiovascular outcomes"	03
5.	"transcatheter aortic valve implantation" AND "versus" NOT "surgical"	101
6.	"transcatheter aortic valve implantation" AND "subclavian" OR "transcaval" OR "transaxillary"	58

eTable 4. Quality appraisal of studies included in this network meta-analysis using MINORS criteria.

	Clearly stated aim	Inclusion of consecutive patients	Prospective collection of data	Endpoints appropriate to the aim of the study.	Unbiased assessment of study endpoint	Follow-up period appropriate to the aim of the study	Loss to follow-up < 5%	Prospective calculation of the study size	An adequate control group	Contemporary groups	Baseline equivalence of groups	Adequate statistical analyses	Total score
Study author (year)													
Petronio et al (2010)	2	2	2	2	0	2	2	2	2	2	2	2	22
Taramasso et al (2011)	2	2	2	2	0	2	2	2	2	2	2	2	22
Eltchaninof et al (2011)	2	0	2	2	0	2	2	2	2	2	0	2	18
Moynagh et al (2011)	2	2	2	2	0	2	2	1	2	2	2	2	21
Petronio et al (2012)	2	2	2	2	0	2	2	2	2	2	2	2	22
Saia et al (2012)	2	0	2	2	0	2	2	2	2	2	0	2	18
Gillard et al (2012)	2	2	2	2	0	2	2	2	2	2	2	2	22
Muensterer et al (2013)	2	0	2	2	0	2	2	2	2	2	2	2	20
Lardizabal et al (2013)	2	2	2	2	0	2	2	2	0	2	2	2	20
Adamo et al (2014)	2	0	2	2	0	2	2	2	2	2	2	2	20
Blackman et al (2014)	2	2	2	2	0	2	0	2	2	2	2	2	20
Frohlich et al (2015)	2	0	2	2	0	2	1	2	2	2	2	2	19
Koifman et al (2016)	2	1	2	2	0	2	0	2	2	2	2	2	19
Kirker et al (2016)	2	0	2	2	0	2	2	2	2	2	2	2	20
Arai et al (2016)	2	1	2	2	0	2	0	2	2	2	0	2	17
Gleason et al (2017)	2	0	2	2	0	2	0	2	2	2	2	2	18
Paone et al (2018)	2	0	2	2	0	2	0	2	2	2	2	2	18
Watanabe et al (2018)	2	0	2	2	0	2	0	2	2	2	2	2	19
Van Wely et al (2018)	2	0	2	2	0	2	0	1	2	2	2	2	17

Dalmuji et al (2018)	2	1	2	2	0	2	0	2	0	2	2	2	17
Chollet et al (2018)	2	2	2	2	0	2	0	2	2	2	2	2	20
Folliguet et al (2019)	2	2	2	2	0	2	0	2	2	2	0	2	19
Amer et al (2019)	2	1	2	2	0	2	0	2	0	2	2	2	17
Allen et al (2020)	2	2	2	2	0	2	2	2	0	2	2	2	20
Long et al (2020)	2	2	2	2	0	2	2	2	0	2	2	2	20
Lu et al (2020)	2	2	2	2	0	2	0	2	2	2	2	2	20
Kirker et al (2020)	2	0	2	2	0	2	0	2	0	2	2	2	16
Jones et al (2021)	2	1	2	2	0	2	0	2	2	2	0	2	17
Marie et al (2021)	2	1	2	2	0	2	0	2	2	2	2	2	19

The items are score 0 (not reported), 1 (reported but inadequate), or 2 (reported and adequate); ideal score being 24.

eTable 5. Consistency Evaluation of Network Meta-analysis Model and Separate Direct and Indirect Evidence (SIDE) Using Back-Calculation Method.

Comparison	k	prop	NMA	Direct	Indirect	ROR	z	p-value*
30-Day All-cause Mortality								
TAx/SC: Transaortic	3	0.24	0.601	0.412	0.676	0.610	-1.051	0.293
TAx/SC: Transapical	7	0.55	0.596	0.537	0.676	0.793	-0.70	0.459
TAx/SC: Transcarotid	3	0.46	0.948	1.216	0.768	1.583	1.310	0.190
TAx/SC: Transcaval	1	0.17	0.670	1.410	0.576	2.449	0.504	0.614
TAx/SC: Transfemoral	13	0.77	1.125	1.036	1.490	0.695	-1.085	0.277
Transaortic: Transapical	5	0.63	0.991	0.959	1.047	0.917	-0.257	0.797
Transaortic: Transcarotid	2	0.21	1.576	2.671	1.373	1.946	1.309	0.190
Transaortic: Transcaval	0	0	1.115	.	1.115	.	.	.
Transaortic: Transfemoral	4	0.71	1.870	1.703	2.340	0.728	-0.925	0.355
Transapical: Transcarotid	3	0.13	1.591	1.475	1.609	0.916	-0.169	0.866
Transapical: Transcaval	0	0	1.125	.	1.125	.	.	.
Transapical: Transfemoral	12	0.92	1.888	1.918	1.559	1.230	0.577	0.564
Transcarotid: Transcaval	1	0.19	0.707	0.360	0.829	0.434	-0.486	0.627
Transcarotid: Transfemoral	9	0.63	1.186	1.500	0.795	1.887	1.989	0.467
Transcaval: Transfemoral	1	0.82	1.678	1.878	0.992	1.893	0.369	0.712
1-Year All-cause Mortality								
TAx/SC: Transaortic	2	0.66	0.814	1.038	0.507	2.048	1.816	0.069
TAx/SC: Transapical	3	0.74	0.804	0.825	0.747	1.104	0.319	0.749
TAx/SC: Transcarotid	0	0	1.267	.	1.267	.	.	.
TAx/SC: Transfemoral	8	1.00	1.167	1.154	433.478	0.003	-2.450	0.014
Transaortic: Transapical	2	0.69	0.989	1.185	0.662	1.790	1.452	0.146
Transaortic: Transcarotid	1	0.17	1.557	10.761	1.055	10.197	2.757	0.005
Transaortic: Transfemoral	2	0.78	1.434	1.227	2.482	0.494	-1.660	0.096
Transapical: Transcarotid	1	0.13	1.575	4.024	1.371	2.936	1.237	0.217
Transapical: Transfemoral	3	0.88	1.451	1.587	0.770	2.060	1.977	0.048
Transcarotid: Transfemoral	2	0.87	0.921	1.170	0.180	6.509	2.302	0.021
Conversion to Open Cardiac Surgery								
TAx/SC: Transaortic	1	0.40	1.067	0.771	1.327	0.518	-0.275	0.783
TAx/SC: Transapical	1	0.41	2.350	0.867	4.688	0.185	-0.806	0.419
TAx/SC: Transcarotid	2	0.83	1.784	1.971	1.089	1.809	0.439	0.660
TAx/SC: Transfemoral	2	0.35	2.085	1.415	2.561	0.553	-0.439	0.660
Transaortic: Transapical	2	1.00	2.203	2.203
Transaortic: Transcarotid	1	0.79	1.672	1.074	8.466	0.127	-0.942	0.346
Transaortic: Transfemoral	0	0	1.955	.	1.955	.	.	.
Transapical: Transcarotid	1	0.72	0.759	0.956	0.417	2.294	0.385	0.699
Transapical: Transfemoral	0	0	0.887	.	0.887	.	.	.
Transcarotid: Transfemoral	3	0.82	1.169	1.299	0.718	1.809	0.439	0.661
30-Day New Pacemaker								
TAx/SC: Transaortic	1	0.33	2.153	3.255	1.759	1.851	1.255	0.290
TAx/SC: Transapical	4	0.58	2.644	3.745	1.641	2.283	2.324	0.020

TAx/SC: Transcarotid	2	0.33	1.297	1.125	1.393	0.807	-0.634	0.526
TAx/SC: Transcaval	1	0.22	0.289	1.390	0.185	7.535	2.687	0.007
TAx/SC: Transfemoral	9	0.79	1.285	1.181	1.776	0.665	-1.372	0.170
Transaortic: Transapical	3	0.52	1.228	1.264	1.190	1.062	0.126	0.899
Transaortic: Transcarotid	0	0	0.602	.	0.602	.	.	.
Transaortic: Transcaval	0	0	0.134	.	0.134	.	.	.
Transaortic: Transfemoral	3	0.92	0.597	0.634	0.309	2.055	0.969	0.332
Transapical: Transcarotid	0	0	0.491	.	0.491	.	.	.
Transapical: Transcaval	0	0	0.109	.	0.109	.	.	.
Transapical: Transfemoral	8	0.93	0.486	0.509	0.267	1.902	1.098	0.272
Transcarotid: Transcaval	1	0.18	0.223	0.121	0.256	0.473	-0.907	0.364
Transcarotid: Transfemoral	8	0.81	0.991	0.961	1.136	0.846	-0.494	0.621
Transcaval: Transfemoral	1	0.75	0.449	6.431	1.444	4.454	2.153	0.031
30-Day Major Vascular Complication								
TAx/SC: Transaortic	3	0.35	1.123	0.774	1.368	0.566	-0.931	0.352
TAx/SC: Transapical	5	0.48	2.449	2.260	2.633	0.858	-0.311	0.755
TAx/SC: Transcarotid	3	0.43	1.587	1.334	1.811	0.737	-0.685	0.493
TAx/SC: Transcaval	1	0.21	0.294	0.470	0.260	1.810	0.265	0.790
TAx/SC: Transfemoral	11	0.81	0.763	0.831	0.524	1.586	1.099	0.271
Transaortic: Transapical	3	0.54	2.181	1.622	3.072	0.528	-1.097	0.272
Transaortic: Transcarotid	1	0.17	1.413	1.676	1.363	1.229	0.254	0.799
Transaortic: Transcaval	0	0	0.261	.	0.261	.	.	.
Transaortic: Transfemoral	3	0.71	0.679	0.897	0.344	2.610	1.719	0.085
Transapical: Transcarotid	1	0.13	0.648	2.103	0.546	3.855	1.678	0.093
Transapical: Transcaval	0	0	0.120	.	0.120	.	.	.
Transapical: Transfemoral	5	0.84	0.311	0.245	1.099	0.223	-2.781	0.005
Transcarotid: Transcaval	1	0.31	0.185	0.600	0.108	5.539	0.872	0.383
Transcarotid: Transfemoral	7	0.69	0.481	0.474	0.495	0.958	-0.102	0.918
Transcaval: Transfemoral	1	0.75	2.598	3.831	0.825	4.643	0.745	0.456
30-Day Stroke								
TAx/SC: Transaortic	2	0.18	2.019	0.896	2.416	0.371	-0.882	0.378
TAx/SC: Transapical	3	0.15	1.684	0.827	1.909	0.433	-0.825	0.409
TAx/SC: Transcarotid	3	0.85	1.694	1.781	1.262	1.411	0.687	0.492
TAx/SC: Transcaval	1	1.00	2.317	2.371
TAx/SC: Transfemoral	7	0.58	1.446	1.301	1.873	0.778	-0.512	0.608
Transaortic: Transapical	3	0.53	0.834	0.912	0.754	1.209	0.221	0.825
Transaortic: Transcarotid	2	0.33	0.839	1.410	0.651	2.165	0.844	0.398
Transaortic: Transcaval	0	0	1.147	.	1.147	.	.	.
Transaortic: Transfemoral	2	0.54	0.716	0.527	1.025	0.514	0.844	0.398
Transapical: Transcarotid	3	0.26	1.006	1.614	0.850	1.899	0.786	0.431
Transapical: Transcaval	0	0	1.376	.	1.376	.	.	.
Transapical: Transfemoral	5	0.75	0.859	0.805	1.044	0.771	-0.373	0.709
Transcarotid: Transcaval	0	0	1.368	.	1.368	.	.	.
Transcarotid: Transfemoral	6	0.45	0.853	1.250	0.628	1.991	1.395	0.163
Transcaval: Transfemoral	0	0	0.624	.	0.624	.	.	.

30-Day MI								
TAx/SC: Transaortic	1	0.46	1.318	1.369	1.275	1.074	0.026	0.979
TAx/SC: Transapical	1	0.34	0.713	1.960	0.423	4.632	0.632	0.527
TAx/SC: Transcarotid	0	0	1.889	.	1.889	.	.	.
TAx/SC: Transcaval	1	1.00	1.034	1.034
TAx/SC: Transfemoral	5	0.99	1.543	1.544	1.415	1.091	0.151	0.988
Transaortic: Transapical	1	0.65	0.541	0.344	1.262	0.272	-0.499	0.617
Transaortic: Transcarotid	0	0	1.434	.	1.434	.	.	.
Transaortic: Transcaval	0	0	0.785	.	0.785	.	.	.
Transaortic: Transfemoral	1	0.43	1.171	3831	0.482	7.954	0.786	0.431
Transapical: Transcarotid	1	0.40	2.649	2.040	3.420	0.596	-0.186	0.852
Transapical: Transcaval	0	0	1.449	.	1.449	.	.	.
Transapical: Transfemoral	2	0.72	2.163	2.170	2.146	1.011	0.004	0.996
Transcarotid: Transcaval	0	0	0.547	.	0.547	.	.	.
Transcarotid: Transfemoral	2	0.93	0.816	0.923	0.158	5.840	0.398	0.690
Transcaval: Transfemoral	0	0	1.492	.	1.492	.	.	.
30-Day Major Bleeding								
TAx/SC: Transaortic	0	0	1.824	.	1.824	.	.	.
TAx/SC: Transapical	0	0	1.189	.	1.189	.	.	.
TAx/SC: Transcarotid	1	0.14	1.329	0.522	1.543	0.338	-1.001	0.317
TAx/SC: Transcaval	1	1.00	0.470	0.470
TAx/SC: Transfemoral	2	0.98	1.172	1.203	0.407	2.955	1.001	0.317
Transaortic: Transapical	1	0.61	0.652	0.440	1.103	0.366	-1.433	0.152
Transaortic: Transcarotid	0	0	0.729	.	0.729	.	.	.
Transaortic: Transcaval	0	0	0.258	.	0.258	.	.	.
Transaortic: Transfemoral	1	0.52	0.643	1.045	0.382	2.736	1.433	0.152
Transapical: Transcarotid	1	0.04	1.118	2.040	1.088	1.876	0.312	0.755
Transapical: Transcaval	0	0	0.395	.	0.395	.	.	.
Transapical: Transfemoral	2	0.87	0.986	0.869	2.339	0.372	-1.416	0.156
Transcarotid: Transcaval	0	0	0.354	.	0.354	.	.	.
Transcarotid: Transfemoral	3	0.88	0.882	0.789	2.044	0.386	-0.889	0.374
Transcaval: Transfemoral	0	0	2.494	.	2.494	.	.	.
30-Day MACCE								
TAx/SC: Transaortic	0	0	0.693	.	0.693	.	.	.
TAx/SC: Transapical	2	0.69	0.503	0.695	0.248	2.803	0.927	0.354
TAx/SC: Transfemoral	4	1.00	0.668	0.673	0.118	5.706	0.297	0.766
Transaortic: Transapical	1	1.00	0.726	0.726
Transaortic: Transfemoral	0	0	0.964	.	0.964	.	.	.
Transapical: Transfemoral	2	0.99	1.328	1.413	0.010	142.392	1.3829	0.166

k: Number of studies providing direct evidence; **Prop**: direct evidence proportion; **NMA**: Estimated treatment effect (RR) in the network meta-analysis; **Direct**: Estimated treatment effect (RR) derived from direct evidence; **Indirect**: Estimated treatment effect (RR) derived from indirect evidence; **ROR**: Ratio of ratios (direct vs indirect); **z**: z-value of test for disagreement (direct vs indirect); **P-value**: p-value of test for disagreement/inconsistency (direct vs indirect); **TAX/SC**: Transaxillary/Subclavian.

*p<0.05 indicates a significant disagreement (inconsistency) between direct and indirect estimate.

eTable-6. Assessment of heterogeneity (Q) and inconsistency among models comparing primary and secondary outcomes.

Outcomes	I ²	τ ²	Q within design (p-value)*	Q between design (p-value)*	Total Q (p-value)*
30-Day All-cause mortality	0	0	13.57 (0.808)	15.60 (0.210)	29.17 (0.560)
≥ 1-year All-cause mortality	55.9	0.04	2.47 (0.871)	29.28 (0.0003)	31.76 (0.004)
Conversion to cardiac surgery	0	0	1.48 (0.686)	1.35 (0.716)	2.84 (0.829)
30-Day New Pacemaker	52.5	0.08	21.39 (0.06)	29.12 (0.002)	50.51 (0.001)
30-Day Vascular Complication	0	0	9.44 (0.738)	12.06 (0.522)	21.51 (0.715)
30-Day Stroke	0	0	1.45 (0.993)	5.01 (0.957)	6.46 (0.998)
30-Day MI	0	0	0.03 (0.986)	1.90 (0.863)	1.92 (0.963)
30-Day Major Bleeding	0	0	0.09 (0.765)	0.36 (0.835)	0.45 (0.929)
30-Day MACCE	2.2	0.012	1.18 (0.757)	2.91 (0.080)	4.09 (0.393)

*p-value <0.10 suggests a significant heterogeneity is present. Total Q represents heterogeneity within and between designs.

eTable-7. Pairwise comparisons in the network meta-analyses for the entire cohort.

1. All-cause Mortality at 30-Days

Tax/SC	0.41 (0.18 – 0.92)	0.54 (0.36 – 0.81)	1.22 (0.73 – 2.02)	1.41 (0.06 – 33.65)	1.04 (0.76 – 1.42)
0.60 (0.41 – 0.89)	Transaortic	0.96 (0.64 – 1.43)	2.67 (1.10 – 6.48)	.	1.70 (1.18 – 2.45)
0.60 (0.44 – 0.81)	0.99 (0.72 – 1.36)	Transapical	1.47 (0.57 – 3.80)	.	1.92 (1.58 – 2.33)
0.95 (0.67 – 1.33)	1.58 (1.05 – 2.36)	1.59 (1.13 – 2.24)	Transcarotid	0.36 (0.02 – 7.41)	1.50 (1.03 – 2.19)
0.67 (0.18 – 2.48)	1.11 (0.30 – 4.20)	1.13 (0.31 – 4.14)	0.71 (0.19 – 2.65)	Transcaval	1.88 (0.45 – 7.79)
1.12 (0.85 – 1.48)	1.87 (1.38 – 2.54)	1.89 (1.57 – 2.28)	1.19 (0.88 – 1.60)	1.68 (0.46 – 6.10)	Transfemoral

2. All-cause Mortality at ≥ 1-Year

Tax/SC	1.04 (0.66 – 1.63)	0.82 (0.61 – 1.12)	.	1.15 (0.94 – 1.42)
0.81 (0.56 – 1.17)	Transaortic	1.18 (0.76 – 1.84)	10.76 (2.39 – 48.51)	1.23 (0.83 – 1.82)
0.80 (0.62 – 1.05)	0.99 (0.69 – 1.42)	Transapical	4.02 (0.81 – 19.90)	1.59 (1.23 – 2.04)
1.27 (0.72 – 2.23)	1.56 (0.84 – 2.88)	1.57 (0.89 – 2.80)	Transcarotid	1.17 (0.66 – 2.07)
1.17 (0.95 – 1.43)	1.43 (1.02 – 2.03)	1.45 (1.15 – 1.84)	0.92 (0.54 – 1.57)	Transfemoral

3. Conversion to open cardiac surgery

Tax/SC	0.77 (0.04 – 15.35)	0.87 (0.04 – 20.28)	1.97 (0.67 – 5.84)	1.42 (0.17 – 12.03)
1.07 (0.16 – 7.11)	Transaortic	2.20 (0.56 – 8.63)	1.07 (0.15 – 7.84)	.
2.35 (0.31 – 17.66)	2.20 (0.56 – 8.63)	Transapical	0.96 (0.10 – 8.84)	.
1.78 (0.66 – 4.80)	1.67 (0.29 – 9.74)	0.76 (0.11 – 5.03)	Transcarotid	1.30 (0.43 – 3.97)
2.09 (0.59 – 7.35)	1.95 (0.26 – 14.53)	0.89 (0.11 – 7.39)	1.17 (0.42 – 3.22)	Transfemoral

4. Major Vascular Complication at 30-Days

Tax/SC	0.77 (0.29 – 2.04)	2.26 (1.13 – 4.53)	1.33 (0.69 – 2.58)	0.47 (0.01–23.13)	0.83 (0.58 – 1.19)
1.12 (0.63 – 1.99)	Transaortic	1.62 (0.75 – 3.53)	1.68 (0.40 – 7.10)	.	0.90 (0.52 – 1.62)
2.45 (1.52 – 3.96)	2.18 (1.23 – 3.85)	Transapical	2.10 (0.48 – 9.17)	.	0.25 (0.16 – 0.37)
1.59 (1.03 – 2.45)	1.41 (0.77 – 2.59)	0.65 (0.38 – 1.10)	Transcarotid	0.60 (0.02 – 14.55)	0.47 (0.30 – 0.75)
0.29 (0.05 – 1.72)	0.26 (0.04 – 1.62)	0.12 (0.02 – 0.72)	0.18 (0.03 – 1.10)	Transcaval	3.83 (0.50 – 29.21)
0.76 (0.55 – 1.05)	0.68 (0.41 – 1.12)	0.31 (0.21 – 0.46)	0.48 (0.33 – 0.70)	2.60 (0.45 – 15.04)	Transfemoral

5. New Pacemaker at 30-Days

Tax/SC	3.25 (1.48 – 7.15)	3.75 (2.38 – 5.89)	1.12 (0.66 – 1.93)	1.39 (0.38 – 5.10)	1.18 (0.91 – 1.54)
2.15 (1.37 – 3.38)	Transaortic	1.26 (0.66 – 2.42)	.	.	0.63 (0.42 – 0.97)
2.64 (1.87 – 3.73)	1.34 (0.82–2.19)	Transapical	.	.	0.46 (0.38 – 0.69)
1.30 (0.95 – 1.77)	0.61 (0.37–1.01)	0.49 (0.33 – 0.72)	Transcarotid	0.12 (0.03 – 0.52)	0.91 (0.72 – 1.28)
0.29 (0.16 – 0.53)	0.13 (0.06–0.28)	0.11 (0.06 – 0.21)	0.22 (0.12 – 0.42)	Transcaval	6.43 (3.27 – 12.64)
1.29 (1.01 – 1.63)	0.58 (0.39–0.88)	0.49 (0.36 – 0.65)	0.99 (0.77 – 1.28)	4.45 (2.48 – 8.00)	Transfemoral

6. Stroke at 30-Days

Tax/SC	0.90 (0.12 – 6.59)	0.83 (0.13–5.17)	1.78 (1.23 – 2.59)	2.32 (0.29 – 18.49)	1.30 (0.70 – 2.42)
2.02 (0.86 – 4.72)	Transaortic	0.19 (0.29 – 2.89)	1.41 (0.32 – 6.13)	.	0.53 (0.18 – 1.50)
1.68 (0.83 – 3.42)	0.83 (0.36 – 1.93)	Transapical	1.61 (0.41 – 6.36)	.	0.80 (0.41 – 1.59)
1.69 (1.20 – 2.40)	0.84 (0.36 – 1.95)	1.01 (0.50 – 2.03)	Transcarotid	.	1.25 (0.61 – 2.57)
2.32 (0.29 – 18.49)	1.15 (0.36 – 1.93)	1.38 (0.15 – 12.35)	1.37 (0.17 – 11.23)	Transcaval	.
1.45 (0.90 – 2.32)	0.72 (0.33 – 1.55)	0.86 (0.48 – 1.55)	0.85 (0.53 – 1.38)	0.62 (0.07 – 5.25)	Transfemoral

7. Myocardial Infarction at 30-Days

Tax/SC	1.37 (0.03 – 67.22)	1.96 (0.04 – 93.06)	.	1.03 (0.26 – 4.17)	1.54 (0.48 – 4.97)
1.32 (0.09 – 18.40)	Transaortic	0.34 (0.02 – 7.00)	.	.	3.83 (0.08 – 190.43)
0.71 (0.07 – 6.79)	0.54 (0.05 – 6.16)	Transapical	2.04 (0.04 – 96.93)	.	2.17 (0.19 – 25.20)
1.89 (0.16 – 22.36)	1.43 (0.06 – 35.90)	2.65 (0.18 – 40.02)	Transcarotid	.	0.92 (0.09 – 9.12)
1.03 (0.26 – 4.17)	0.78 (0.04 – 15.49)	1.45 (0.10 – 20.51)	0.55 (0.03 – 9.34)	Transcaval	.
1.54 (0.48 – 4.93)	1.17 (0.09 – 15.09)	2.16 (0.27 – 17.27)	0.82 (0.09 – 7.44)	1.49 (0.24 – 9.17)	Transfemoral

8. Major Bleeding at 30-Days

TAx/SC	.	.	0.52 (0.07 – 3.75)	0.47 (0.01 – 22.82)	1.20 (0.87 – 1.67)
1.82 (0.85 – 3.90)	Transaortic	0.44 (0.19 – 1.04)	.	.	1.04 (0.40 – 2.72)
1.19 (0.68 – 2.08)	0.65 (0.19 – 1.04)	Transapical	2.04 (0.04 – 96.93)	.	0.87 (0.53 – 1.42)
1.33 (0.64 – 2.76)	0.73 (0.03 – 22.45)	1.12 (0.50 – 2.52)	Transcarotid	.	0.79 (0.39 – 1.62)
0.47 (0.01 – 22.82)	0.26 (0.00 – 71.37)	0.40 (0.01 – 19.98)	0.35 (0.01 – 18.38)	Transcaval	.
1.17 (0.85 – 1.62)	0.64 (0.05 – 28.27)	0.99 (0.62 – 1.56)	0.88 (0.45 – 1.73)	2.49 (0.05 – 122.77)	Transfemoral

9. MACCE at 30-Days

TAx/SC	.	0.69 (0.21 – 2.35)	0.67 (0.32 – 1.43)
0.69 (0.20 – 2.37)	Transaortic	0.73 (0.36 – 1.46)	.
0.50 (0.18 – 1.38)	0.73 (0.36 – 1.46)	Transapical	1.41 (0.65 – 65.09)
0.67 (0.32 – 1.41)	0.96 (0.34 – 2.74)	1.33 (0.61 – 2.89)	Transfemoral

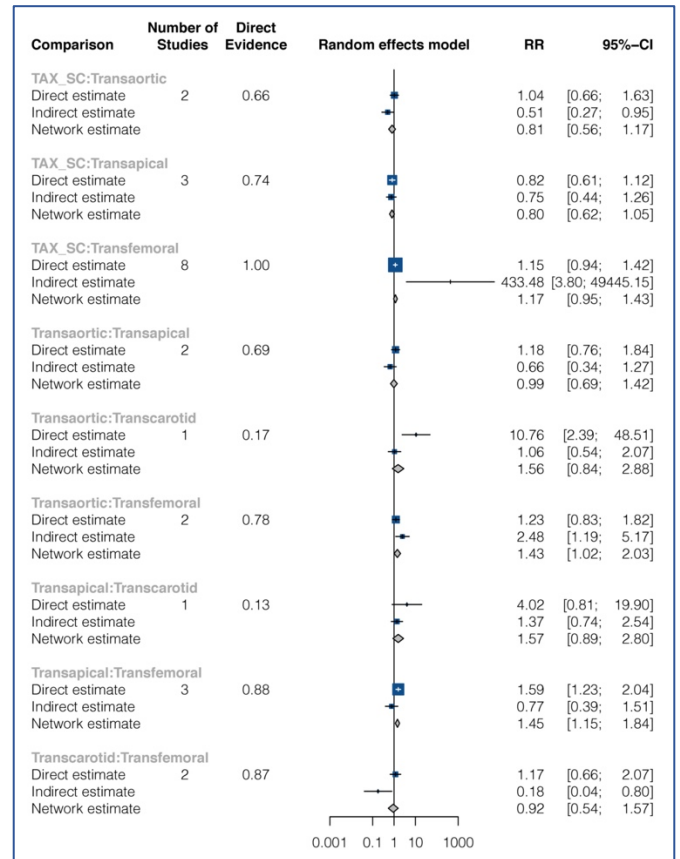
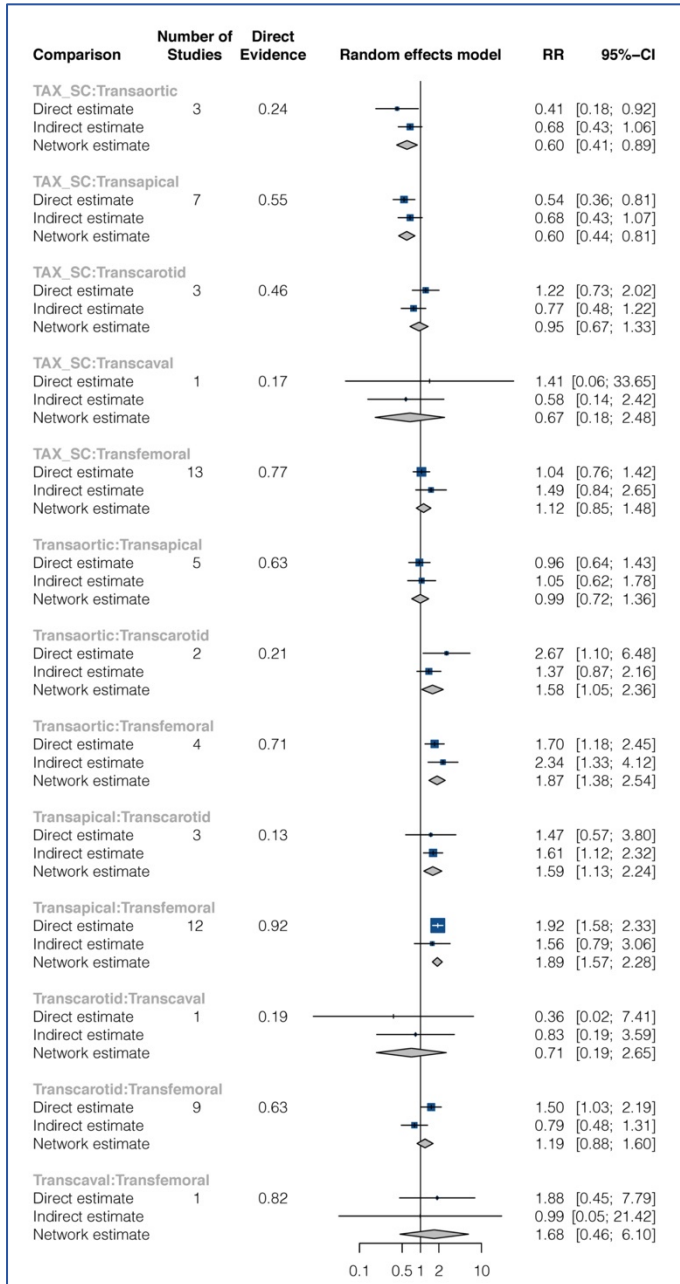
eTable 8. Baseline Characteristics of Studies and Patients in Different Comparison Groups.

Characteristics	Transfemoral	Transaxillary/Subclavian	Transaortic	Transapical	Transcarotid	Transcaval
No. of studies (patients)	28 (24,363)	17 (2,767)	7 (825)	15 (2,724)	13 (1,933)	2 (77)
Age, years (mean \pm SD)	81.9 \pm 7.1	80.5 \pm 6.9	82.9 \pm 16.1	81.6 \pm 8.1	79.7 \pm 8.4	80.1 \pm 6.8
Males (%)	49.5	58.4	48.2	51.4	58.0	43.1
Diabetes Mellitus (%)	30.0	29.2	27.6	28.4	38.7	38.3
Prior MI (%)	23.2	25.5	17.6	25.8	31.5	27.3
Prior PCI (%)	28.1	32.3	26.3	33.7	43.5	13.6
Prior PVD (%)	22.1	52.4	48.6	54.2	66.8	56.1
NYHA > III or IV (%)	71.1	68.0	78.6	73.3	56.3	94.0
STS Risk	8.7 \pm 5.4	12.0 \pm 13.1	7.8 \pm 3.8	11.7 \pm 6.3	7.6 \pm 4.8	8.5 \pm 3.5

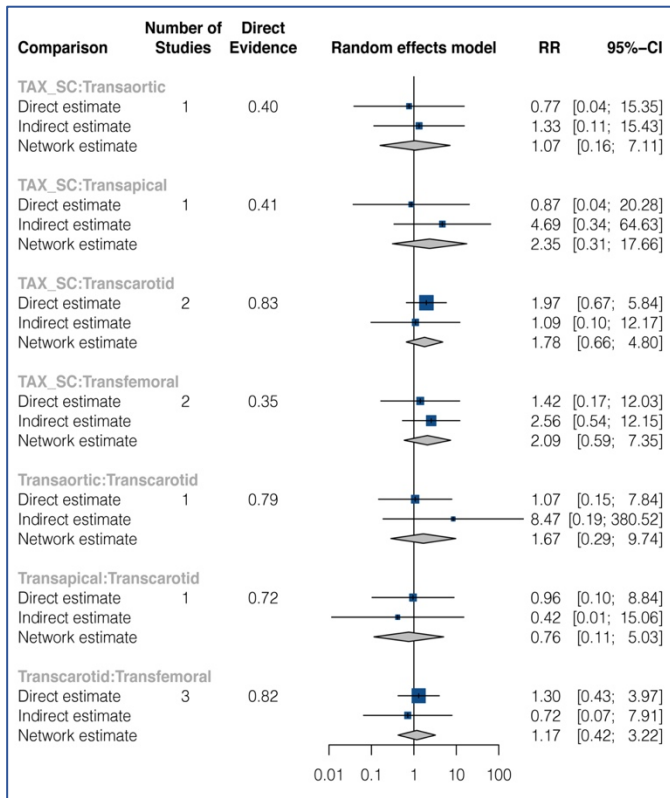
Figure-1. Graphical representation of the inconsistency among primary and secondary outcomes.

a. All-cause Mortality At 30-Days

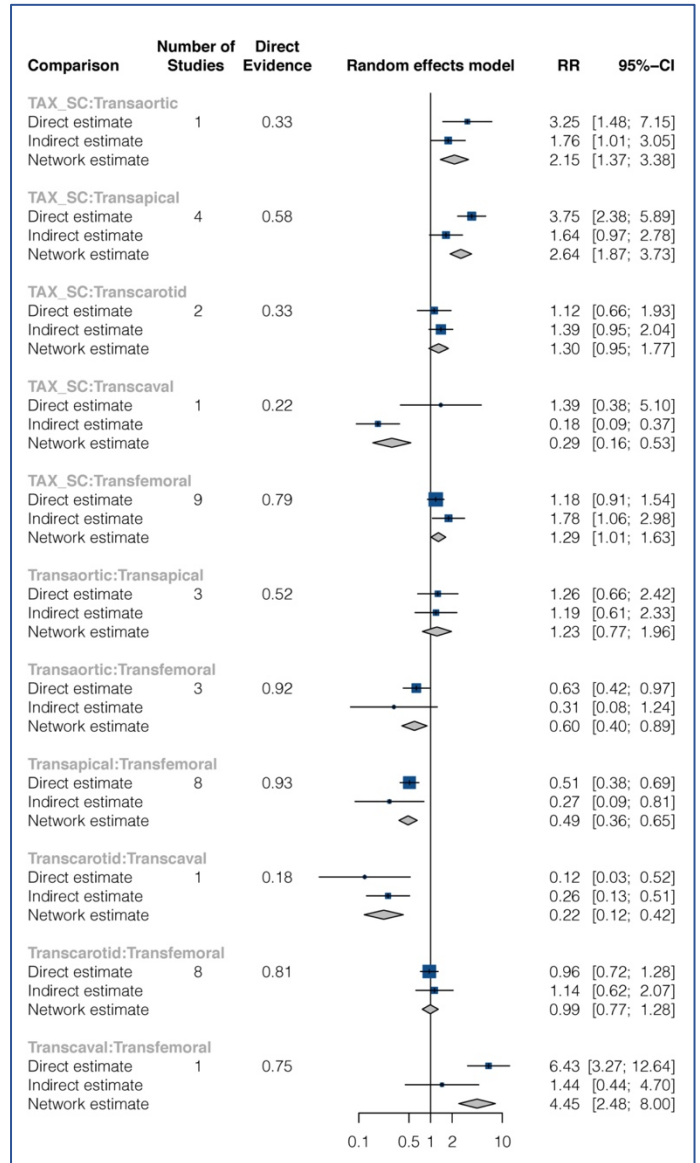
b. All-cause Mortality at ≥ 1 -Year



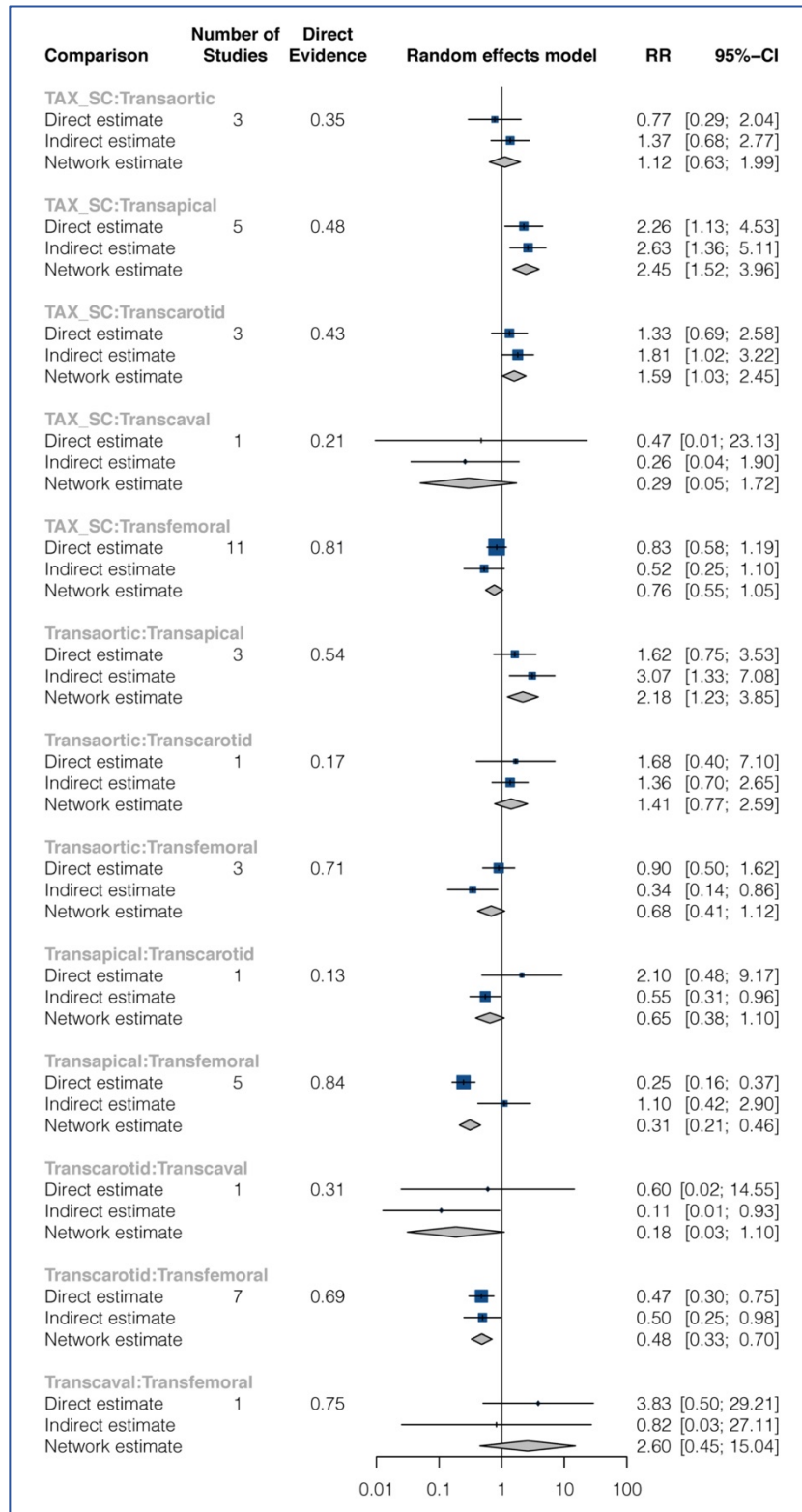
c. Conversion to open cardiac surgery



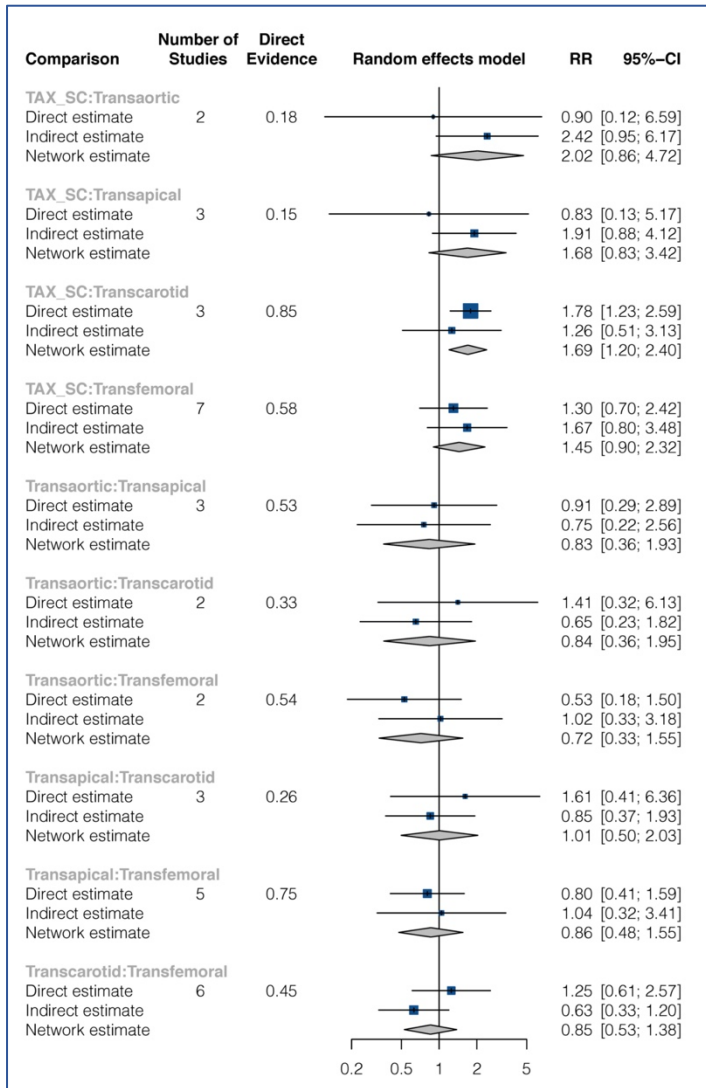
d. New pacemaker insertion at 30-days



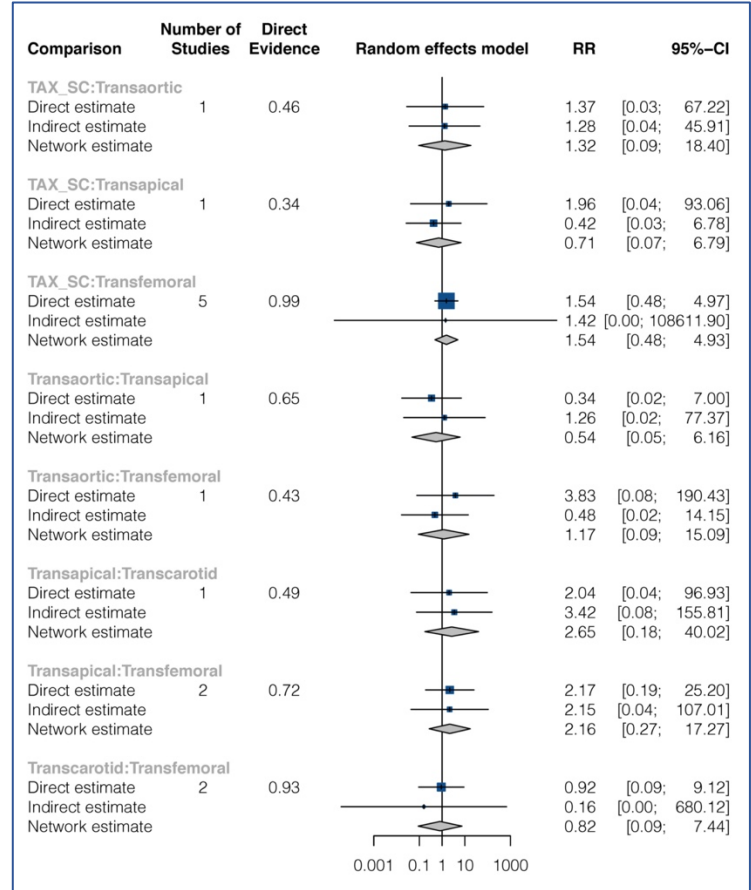
e. Major vascular complication at 30-days.



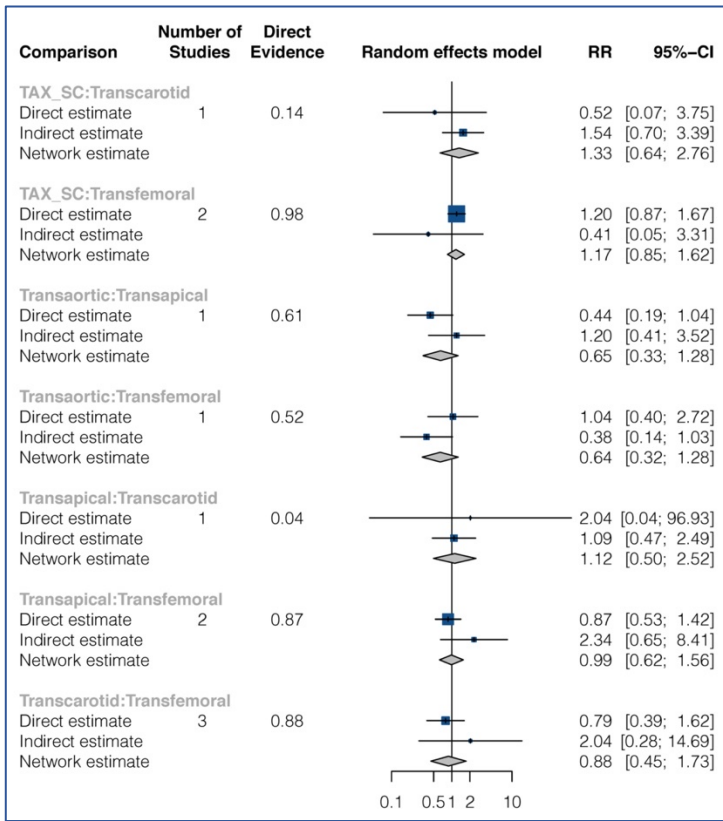
f. Stroke At 30-Days



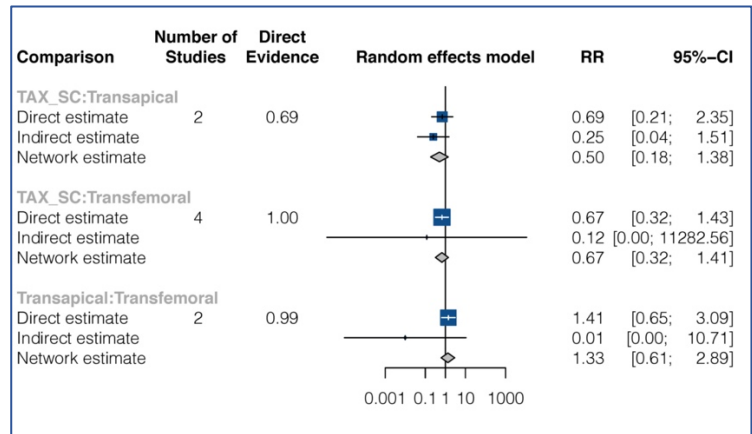
g. MI At 30-Days



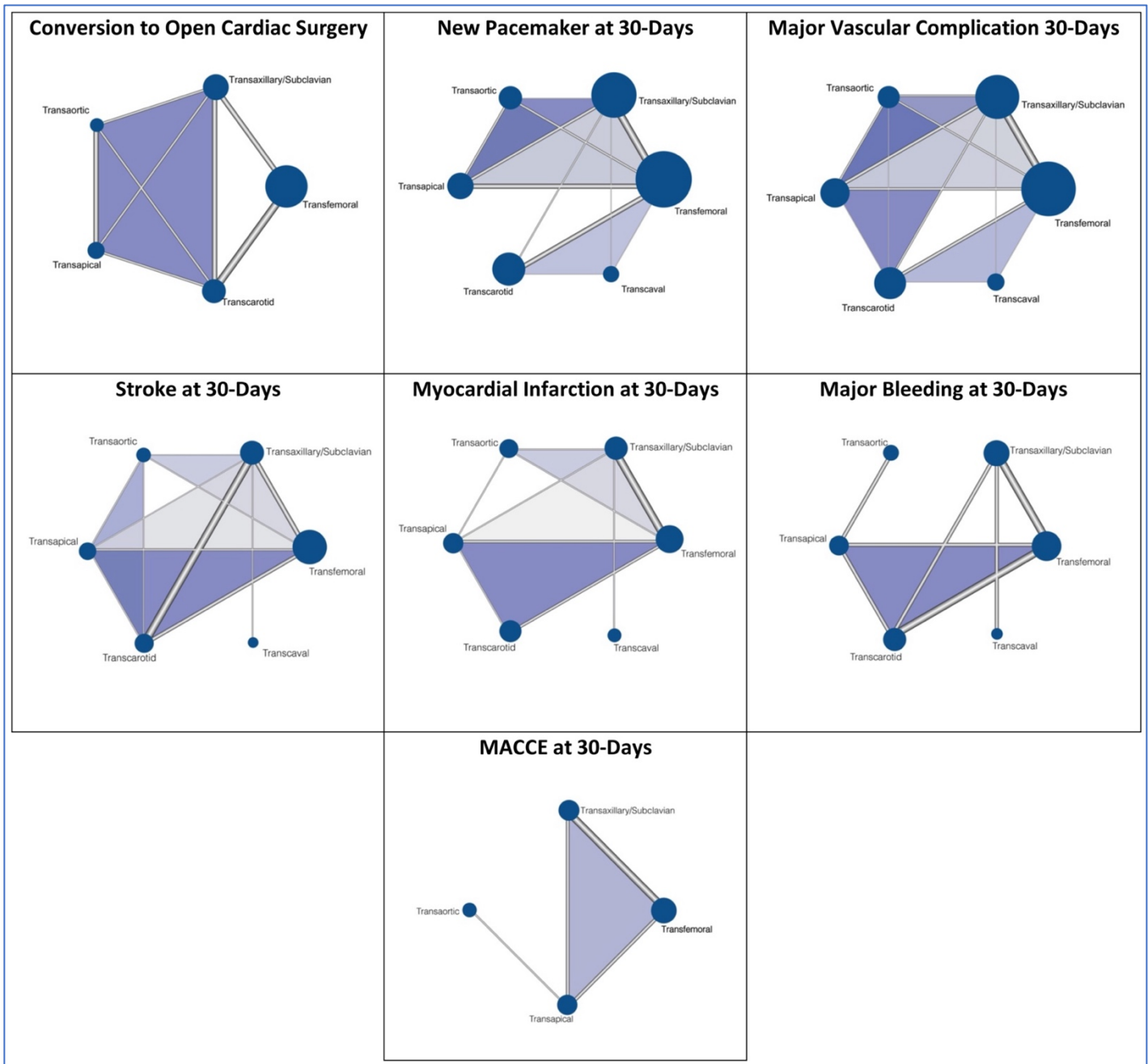
h. Major Bleeding At 30-Days



i. MACCE At 30-Days



eFigure-2. Network graphs for the secondary outcomes.



Each node (solid circle) represents an individual access site used in TAVR. The size of the node corresponds to the total number of patients included in each of the groups. The thickness of the edges (gray lines) connecting different nodes corresponds to the number of studies directly comparing a particular treatment pair.

eFigure-3. Rankograms for the secondary outcomes.

