

Reserved space. Do not place any text in this section. Include the mandatory author checklist or your manuscript will be returned. Use *continuous* line numbering in your manuscript.

Article Summary Line: The BNT162b2 vaccine was found to be less effective in protecting against Covid-19 infection after six months, and vaccination with a third dose is indicated.

Running Title: BNT162b2 vaccine effectiveness after six months

Keywords: COVID-19, serologic tests, vaccines, epidemiology, public health, infections, immune response

Title: Effectiveness of the mRNA BNT162b2 vaccine six months after vaccination: findings from a large Israeli HMO

Authors: Jennifer Kertes, Sharon Baruch Gez, Yaki Saciuk, Lia Supino-Rosin, Naama Shamir Stein, Miri Mizrahi-Reuveni, Anat Ekka Zohar

Affiliations:

Maccabi HealthCare Services, Israel (J. Kertes, S. Baruch Gez, Y. Saciuk, L. Supino-Rosin, N.

Abstract—149 words

Israel is currently experiencing a new wave of CoVid-19 infection, six months after implementing a national vaccination campaign. We carried out three discrete analyses using data from a large Israeli HMO to determine whether IgG levels of those fully vaccinated drop over time, the relationship between IgG titer and subsequent PCR-confirmed infection, and compare PCR-confirmed infection rates by period of vaccination. We found that mean IgG antibody levels steadily decreased over the six-month period in the total tested population, and in all age groups. An inverse relationship was found between IgG titer and subsequent CoVid-19 infection (PCR-positive). Those participants vaccinated in the first two months of

NOTE: This preprint reports new research that has not been certified by peer review and should not be used to guide clinical practice. the campaign were more likely to become infected than those subsequently vaccinated. The 60+

Reserved space. Do not place any text in this section. Include the mandatory author checklist or your manuscript will be returned. Use *continuous* line numbering in your manuscript.

vaccinated had lower initial IgG levels, and were at greater risk of infection. The findings support the decision to add a booster vaccine for those aged 60 and over. 23
24

Text (word count: 3,223) 25

INTRODUCTION: 26

The first case of Covid-19 was identified in Israel at the end of February 2019.(1) As in other countries, Israel has experienced a number of infection waves. The third and largest wave to-date, largely attributed to the entry of the Alpha variant to Israel, commenced in September 2020. At its' peak, over 8,000 new cases were being identified daily.(2) Israel was among the first countries to introduce a national vaccination campaign, using the mRNA BNT162b2 vaccine (Pfizer-BioNTech©). The BNT162b2 vaccine received emergency approval for use by the FDA after demonstrating 95% efficacy over an average two-month follow-up period.(3,4) The vaccine was initially approved for any person aged 16 and over, with a recommended 21-day interval, two-dose administration. The vaccine campaign commenced on the 20th December 2020 (concurrent with a two-month nationwide lockdown), first targeting all healthcare workers and the 60+ population, and quickly extending to all the population aged 16+. Initially those members with a prior infection were not eligible for vaccination, but within three months, policy was changed to offer a single dose to all those with prior infection. By April 2021, over 50% of those aged 16 and over, and 88% of the 50+ age group country-wide had been fully vaccinated.(2) Incidence rates dropped to 140/day by April 2021.(2) Initial population-based studies in Israel comparing the vaccinated and unvaccinated, reported vaccine effectiveness rates of 95%.(5,6) 27
28
29
30
31
32
33
34
35
36
37
38
39
40
41

One of the biggest questions regarding the vaccine is the length of protection provided. In publishing its third phase results, Pfizer-BioNTech reported a 91% efficacy rate over a six month follow-up period, with an estimated 6% drop in efficacy every two months.(7) Israeli population-based observational studies are no longer a feasible method of evaluating long-term effectiveness of the vaccine, given that the majority of the population have now been fully vaccinated. Infection rates in Israel are on the rise again, with Israel currently experiencing it's fourth wave of infection. The majority (97%) of those infected in this 42
43
44
45
46
47

Reserved space. Do not place any text in this section. Include the mandatory author checklist or your manuscript will be returned. Use *continuous* line numbering in your manuscript.

current wave are infected with the Delta variant (B.1.617.2) (unpublished data provided by Israel Ministry of Health Laboratories). Initial serological studies of the Delta variant suggest that the BNT162b2 vaccine provides protection against Delta-variant infection, but at lower rates than for the Alpha variant (88% vs 93.7% respectively).(8) Given the rise in infection rates, the dilemma arose whether this rise was attributable to reduced effectiveness of the vaccine against the Delta variant or a waning of protection provided by the vaccine over time.

The objective of this study was to determine if the BNT162b2 vaccine had become less effective in preventing infection, and if so, in which population groups and to what degree. In order to meet this objective, we carried out three discrete analyses to answer the following questions: a) do antibody levels (IgG) of those fully vaccinated drop over time and if so, for who and how quickly, b) what is the relationship between antibody level (IgG) and subsequent PCR-confirmed infection, and c) is there a difference in PCR-confirmed infection incidence rates between those vaccinated in the initial months of the vaccination campaign to those vaccinated later?

METHODS:

We conducted a series of retrospective cohort analyses to meet the study objectives. All data were extracted from the Maccabi HealthCare Services database. Maccabi is the second largest HMO in Israel, providing healthcare coverage for over 2.5 million citizens (a quarter of Israel's population). The database includes demographic data (date of birth, gender, socioeconomic status based on census and national survey classifications applied to home address), laboratory data (all PCR and IgG test results) and health status data (chronic illness registries, such as heart disease, HTN, CKD, diabetes and immunosuppressive disorder, based on hospital and community-based diagnoses and procedures, relevant laboratory and test results). The study was approved by the Maccabi Helsinki Committee (#0178-20-MHS), with informed consent waived, as all data extracted from the database were anonymized and aggregated.

Testing Procedures: PCR testing is carried out free of charge for any HMO member presenting with symptoms or reporting exposure to a confirmed case. Testing is carried out using real-time polymerase chain reaction tests (PCR) using Allplex™ 2019-nCoV Assay, Seegene Inc. Serology testing was carried

Reserved space. Do not place any text in this section. Include the mandatory author checklist or your manuscript will be returned. Use *continuous* line numbering in your manuscript.

out among specific target populations (such as employees (19%) and residents and employees of geriatric 74
medical and retirement home facilities owned by the HMO (4%)) at discrete points in time, but the 75
majority of testing was carried out in the general HMO population (77%) for whom testing is freely 76
available upon request. IgG antibody testing was carried out using SARS-CoV-2 specific anti-spike 77
antibodies with follow-up chemo-luminescence immunoassay (Quant II IgG anti-Spike CoV2-SARS by 78
Abbott (Illinois, USA)) and reported as AU/ml (Arbitrary units). Antibody levels are reported 79
numerically, except for outliers (below 21 and above 40,000 AU/ml) which are coded. Coded results were 80
converted to numeric results ('below 21' as 21 and 'above 40,000' as 40,001). 81

IgG antibody levels of the vaccinated population over time: All HMO members that had received both 82
vaccine doses and had a subsequent IgG test for SARS-CoV-2 antibodies at least seven days after the 83
second vaccination were included in this component of the study. The study period extended from 11th 84
January 2021 (when those first vaccinated reached day seven post- second dose) to 7th July 2021. IgG 85
antibody results were mapped over the 180-day period, by demographic and health characteristics (age 86
group, gender, socio-economic status and presence of selected chronic illnesses). 87

Relationship between IgG antibody levels and subsequent SARS-CoV-2 Infection: All HMO members 88
that had a PCR test (irrespective of vaccination status) between 1st June 2021 and 14th July 2021 (peak of 89
fourth wave of infection to date) with an IgG serology test between seven and 120 days prior to the PCR 90
test were included in this component of the study. Last test result was included for those with more than 91
one test. Last PCR test date was utilized if all results were negative and first positive PCR test date was 92
utilized for those more than one result. The proportion of participants with subsequent positive PCR 93
results by antibody level status was calculated. 94

Comparison of infection rates by vaccination period: All HMO members who, as of the 9.6.2021, were 95
at least seven days post- second vaccination dose with no prior positive PCR result were included in this 96
component of the study. Members having received three doses or with an appointment to receive the third 97
dose (N=320) in the follow-up period were excluded from analysis. (At this time, a recommendation to 98
offer a booster vaccination for those with immune-suppressive disorder had been authorized). The study 99

Reserved space. Do not place any text in this section. Include the mandatory author checklist or your manuscript will be returned. Use *continuous* line numbering in your manuscript.

population was categorized by vaccination completion: Jan-Feb 2021 and Mar-May 2021. For both 100
groups, the proportion that were tested PCR-positive between 9.6.2021-18.7.2021 (yes/no) was 101
calculated. 102

Statistical Analyses: Mann Whitney and Kruskal Wallis tests were carried out to compare antibody 103
levels over time between different population groups. Linear regression was used to identify those factors 104
associated with serology level. Ln of serology levels evidenced a normal distribution and was selected as 105
the outcome variable. Other variables entered into a hierarchical model were a) days from vaccination, b) 106
age, gender and socio-economic status, and c) selected chronic illnesses. 107

Chi square analyses were used to test the association between serology levels (categorized) with PCR 108
outcome. Serology status was categorized into below or equal to 300 AU/ml, or above 300 AU/ml. 109

Kaplan-Meier survival curves were calculated to compare time from serologic test to positive PCR result 110
for the serology categories using log-rank tests. Event was defined as positive PCR result. Time to event 111
was the number of days from serology test to PCR test, with censoring for those that died or left the 112
HMO, or had a follow up of less than 120 days. Logistic regression analysis was used to compare PCR- 113
positive outcome between vaccination periods, while controlling for age group, socio-economic status 114
and presence of chronic illness (heart disease, HTN, diabetes, CKD, and immunosuppressive disorder). 115

Statistical analyses were carried out using SPSS, version 25 (BMI©) and R (version 3.6.2) 116

RESULTS: 117

IgG antibody levels of the vaccinated population over time (N=8,395): 118

The description of the study population is provided in Table 1. Of all HMO members who received both 119
vaccine doses, those subsequently tested for IgG antibodies were more likely to be male, younger (in the 120
18-44 age group), in a higher socio-economic bracket and less likely to have a chronic illness than those 121
not IgG tested. 122

Serology levels in the study population were found to decrease over time from a mean of 14,008 for 123
those tested within a month of being vaccinated to a mean of 1,411 for those tested in the sixth month 124
after vaccination (Table 4). A decrease over time was observed in all sub-population groups, when 125

Reserved space. Do not place any text in this section. Include the mandatory author checklist or your manuscript will be returned. Use *continuous* line numbering in your manuscript.

results were stratified by age group, gender, socio-economic status and selected chronic illnesses (Table 126
2). The largest mean differences between sub-populations were observed in their initial serology levels 127
(within the first month). Serology levels of participants aged 60 and over were almost half those of 128
participants under the age of 60 in the first month, attenuating to a less than 10% difference six months 129
later (Figure 1). Large differences in initial serology levels were also observed for participants with 130
chronic illness, in particular participants with immunosuppressive disorder, CKD or heart disease. Initial 131
(first-month) serology levels increased by socio-economic level. 132
Of all those that were vaccinated with both doses, 2.8% also had a positive PCR result. Comparable 133
declines in serology means by month were observed in this group, as in others. However, the mean 134
serology level for those tested in the first 7-30 days was much higher than for the total study population 135
(22,630 AU/ml, $p < .001$). 136

When demographic and health variables were entered into a linear regression model (Appendix, Table 137
A1), all factors remained independently associated with serology levels, with the highest co-efficient 138
observed for participants with immunosuppressive disorder. No multi-collinearity was observed between 139
the factors in the regression model. 140

Relationship between IgG antibody levels and subsequent SARS-CoV-2 Infection (N=5,141): 141

Demographic and health characteristics of HMO members with a serology result who had subsequently 142
tested for PCR were similar to those that had no PCR test result (Table 2) with the exception of socio- 143
economic status and diabetes status. PCR testers were more likely to be in the lower socio-economic 144
bracket and have diabetes than non-PCR testers. 145

Of all those who had both tests (N=5,141), 57% had a serology test result of 150 AU/ml and lower, 6% 146
had a result between 150-299 AU/ml, 10% had a test result between 300-799 AU/ml and 27% had a result 147
greater than 800 AU/ml. The proportion of participants with a positive PCR result were 1.2% for those 148
with serology levels lower 150 AU/ml and lower, 1.3% for those with serology levels between 150-299, 149
0.2% of those with a result of 300-799 AU/ml and for those with a result of 800+ AU/ml ($p = .004$). Mean 150

Reserved space. Do not place any text in this section. Include the mandatory author checklist or your manuscript will be returned. Use *continuous* line numbering in your manuscript.

serology levels for the 42 study participants with a positive PCR result was 175 (SD: 490) compared to a mean serology level of 2057 (SD: 6030) for those with a negative result ($p < .001$).

Of all the study participants for this component of the study, 365 (7%) had a prior infection (37% of whom received one vaccine dose). Those with a prior infection were less likely to have a serology level of 300 AU/ml and below than those without a prior infection (40.3% vs 65.2% respectively, $p < .001$). However, irrespective of prior infection (yes/no), the proportion of those with a new PCR positive result was 0.8%. Kaplan-Meier survival curves (over time by serology status (± 300 AU/ml)) are presented in Figure 2. The curves indicate that participants with lower serology level (≤ 300 AU/ml) had lower survival rates than participants with higher serology status (± 300 AU/ml) (log-rank test $p = .003$).

Comparison of infection rates by vaccination period (N=1,423,098):

At the time of the study, 86% of those eligible for vaccination (aged 16+) had received both doses in the HMO (90% of those aged 60+). Comparison of demographic and health variables between those vaccinated in the first two months, compared to those vaccinated later are presented in Table 3. Those vaccinating in the first two months were more likely to be older, in a higher socio-economic bracket and with higher rates of chronic illness. 1,518 (0.19%) of those vaccinated in Jan-Feb 2021 were subsequently found to be PCR positive, compared to 644 (0.11%) of those vaccinated in Mar-May 2021 ($p < .001$). Univariate analyses (Appendix, Table A2) also revealed that age, gender, socio-economic status and presence of chronic illnesses (health disease, diabetes, HTN and CKD) were all associated with having a positive PCR result.

Factors associated with subsequent infection (positive PCR result) in a logistic regression model (Table 5) were socio-economic status, age group, vaccination period, gender and heart disease. When controlling for all other factors, members vaccinated first were 1.6 times more likely to get infected with CoVid-19 than those vaccinated later.

DISCUSSION:

In this study, we established that IgG serology levels for SARS-CoV-2 virus decreased progressively over time for both the total vaccinated population and in each sub-population when stratified by

Reserved space. Do not place any text in this section. Include the mandatory author checklist or your manuscript will be returned. Use *continuous* line numbering in your manuscript.

demographic and health variables. We also established a clear association between serology levels and 177
subsequent risk of infection, wherein participants with a serology level of 300 AU/ml or lower were more 178
likely to get infected with CoVid-19 than those with a serology level above 300 AU/ml. Finally, we 179
established that those vaccinated at the beginning of the national vaccination campaign were more likely 180
to get infected (during the current wave of infection) than those vaccinated later. These findings suggest 181
that effectiveness of the vaccine does drop over time and that the current wave of infection can be 182
attributed, at least in part, to the vaccine's reduced effectiveness over time. 183

IgG antibody levels of the vaccinated population over time: 184

Initial serological studies focused on patients found PCR positive for CoVid-19, and reported a decrease 185
over time of antibody presence from time of infection.(9-11) Fewer studies have looked specifically at 186
serological response of the vaccinated population. Most of the studies based on vaccinated populations 187
found near 100% seroconversion rates, but had short follow-up periods.(12,13) Serological levels were 188
much higher amongst the vaccinated population than those convalescing after infection(12) and those 189
under the age of 50.(13) In a case-control study of PCR positive cases divided by prior vaccination status 190
(yes/no), Lopez-Bernal et al. (2021)(8) found that those vaccinated (two dose) with the BNT162b2 191
vaccine with the Alpha variant achieved 93.7% vaccine effectiveness, compared to an 88% vaccine 192
effectiveness rate for those infected with the Delta variant. 193

We did not find studies published describing serological status over longer follow-up periods for a 194
vaccinated population. Mean levels of IgG antibody decreased progressively over time for all sub- 195
populations in this study. The difference between the groups was mostly evident in initial (first month) 196
starting means, with the elderly and those suffering from chronic illness having lower levels, but 197
attenuating to more comparable levels between groups six months after vaccination. In a large British 198
household study, IgG response was measured over the first three months(14) found higher sero- 199
conversion rates for younger age groups (20-40), females, those receiving both doses, vaccination with 200
BNT162b2 vaccine (compared to Astra-Zeneca vaccine) and those with evidence of a prior infection. 201

Reserved space. Do not place any text in this section. Include the mandatory author checklist or your manuscript will be returned. Use *continuous* line numbering in your manuscript.

Low responders were older and had higher prevalence of chronic illness/disease, such as patients on 202
immune-suppressants or suffering from diabetes. These same population groups, were found in this study 203
to start with lower serology levels and have lower mean serology levels six-months post- vaccination. 204

Relationship between IgG antibody levels and subsequent SARS-CoV-2 Infection: 205

One of the many unknowns regarding CoVid-19 is to what extent IgG antibody presence is indicative of 206
protection against the virus. The manufacturer's recommended cut-off indicating a positive serological 207
response (<50 AU/ml) is much lower than the mean serology levels found in the sixth month post- 208
vaccination in the present study. Are higher levels indicative of higher protection? Other mechanisms of 209
protection, such as anti-viral T and B cell memory have been suggested as offering protection, even in the 210
absence of seroconversion.(15) Khoury et al (2021)(16), in a meta-analysis, found a strong relationship 211
between mean neutralization levels and reported protection. They further estimated that protection was 212
likely to fall over 250 days, although with still largely preserved protection from severe infection. In the 213
second component of our study, we found a strong association between serological level and PCR 214
outcome where increasing serology level was associated with decreasing infection rates. Using a cut-off 215
of 300 AU/ml, we found higher rates of infection for those with low serology levels. 216

Comparison of infection rates by vaccination period: 217

Little data is available to compare vaccine effectiveness over time, with observational follow-up studies 218
becoming less appropriate, given the potential bias between those electing to vaccinate and those that do 219
not. Pfizer-BionTech published its most recent efficacy study, wherein symptomatic infection rates were 220
compared between vaccinated and unvaccinated groups over a period of six months.(7) Vaccine efficacy 221
for infection dropped from 96% within the first two months post- second dose to 84% vaccine efficacy 222
four to six months post- second dose. Consistent with Pfizer's findings, we found higher rates of CoVid- 223
19 infection among those vaccinated in the initial months of the vaccine campaign compared to those 224
vaccinated later. Even after controlling for age (those vaccinated first were more likely to be older), 225
incidence rates were higher in the first-vaccinated group. Were the majority of the current wave of 226
infection be attributable to the Delta virus, we would expect consistent incidence rates, irrespective of 227
228

Reserved space. Do not place any text in this section. Include the mandatory author checklist or your manuscript will be returned. Use *continuous* line numbering in your manuscript.

when the individual was vaccinated. We suggest that the difference found here between time periods 229
indicates a reduction in vaccine effectiveness over time. We cannot rule out, however, some contribution 230
of the Delta variant to reduced effectiveness. 231

The study findings here are subject to a number of limitations. Firstly, serology test findings were not 232
based on repeated tests in the same population, but a description of the results over time of a non- 233
randomly selected population. Those presenting for serology and PCR testing were not a randomly 234
selected group. Mean serology levels were calculated for each sub-population, despite the potential for 235
outlier measures to skew results, to allow statistical comparison between sub-population groups. Numbers 236
were small for some stratified data, particularly for the 120-149 period, and should be interpreted with 237
caution. Study findings were not adjusted for serology test accuracy. Conclusions are made on the 238
assumption that the majority of those infected in the third component of the study (by time of 239
vaccination) were infected with the Delta variant, given its' prevalence in Israel. 240

Given these limitations, the different elements of the study were based on large numbers of a vaccinated 241
population with six months of follow-up time to measure CoVid-19 infection. We established that 242
serology levels for all groups have decreased over time, that there is a strong relationship between 243
serology levels and subsequent infection, and that those vaccinated early in the vaccination campaign had 244
higher infection rates. These factors taken together suggest that the BNT162b2 vaccine, as indicated by 245
the manufacturer, offers lower protection against infection over time, independent of variant type. These 246
results, combined with other studies carried out in Israel and elsewhere, contributed to the decision to 247
offer a third dose of the BNT162b2 vaccine to the population aged 60 and over. Follow-up of infection 248
and morbidity rates in this group will allow us to confirm the wisdom of providing a booster dose. 249

Acknowledgments none 250

Disclaimers The opinions expressed by authors contributing to this journal do not necessarily reflect the 251
opinions of the Centers for Disease Control and Prevention or the institutions with which the authors are 252
affiliated.” Additional disclaimers are discouraged. 253

Reserved space. Do not place any text in this section. Include the mandatory author checklist or your manuscript will be returned. Use *continuous* line numbering in your manuscript.

Author Bio Jennifer Kertes MPH, is a senior researcher in the Division of data & digital health, Maccabi Healthcare Services and has been involved in the design and implementation (data extraction, analysis and interpretation and summary) of innumerable epidemiological and public health studies for the HMO for over twenty years. Her primary research interests include public health and health promotion studies (especially regarding smoking) and pharma-therapeutic studies.

References:

1. Rosen B, Waitzberg R, Israeli A. Israel's rapid rollout of vaccinations for COVID-19. *Isr J Health Policy Res.* 2021;10(1):1-14.
2. Leshem E, Wilder-Smith A. COVID-19 vaccine impact in Israel and a way out of the pandemic. *Lancet.* 2021;397(10287):1783-1785.
3. Vaccines and Related Biological Products Advisory Committee Meeting, Dec 10th 2020. FDA Briefing Document - Pfizer BioNTech COVID-19 vaccine. 2021.
<https://www.fda.gov/media/144245/download>
4. Polack FP, Thomas SJ, Kitchin N, Absalon J, Gurtman A, Lockhart S, et al. Safety and efficacy of the BNT162b2 mRNA Covid-19 vaccine. *N Engl J Med.* 2020;382(27):2603-2615.
5. Haas EJ, Angulo FJ, McLaughlin JM, Anis E, Singer SR, Khan F, et al. Impact and effectiveness of mRNA BNT162b2 vaccine against SARS-CoV-2 infections and COVID-19 cases, hospitalisations, and death following a nationwide vaccination campaign in Israel: an observational study using national surveillance data. *Lancet.* 2021;397(10287):1819-1829.
6. Dagan N, Barda N, Kepten E, Miron E, Perchik S, Katz MA, et al. BNT162b2 mRNA COVID-19 vaccine in a nationwide mass vaccination setting. *N Engl J Med.* 2020;384(15):1412-1423.
7. Thomas SJ, Moreira ED, Kitchin N, Absalon J, Gurtman A, Lockhart S, et al. Six month safety and efficacy of the BNT162b2 mRNA COVID-19 vaccine. *medRxiv [Preprint] [Cited July 28, 2021].*
Available from <https://doi.org/10.1101/2021.07.28.21261159>

Reserved space. Do not place any text in this section. Include the mandatory author checklist or your manuscript will be returned. Use *continuous* line numbering in your manuscript.

8. Lopez Bernal J, Andrews N, Gower C, Gallagher E, Simmons R, Thelwall S, et al. Effectiveness of Covid-19 vaccines against the B.1.617.2 (Delta) Variant. *N Engl J Med.* Aug 12;385(7):585-594. Epub 2021 Jul 21.
9. Zhao J, Yuan Q, Wang H, Liu W, Liao X, Su Y, et al. Antibody responses to SARS-CoV-2 in patients of novel coronavirus disease 2019. *Clin Infect Dis.* 2020;71(16):2027-2034.
10. Zhou W, Xu X, Chang Z, Wang H, Zhong X, Tong X, et al. The dynamic changes of serum IgM and IgG against SARS-CoV-2 in patients with COVID-19. *J Med Virol.* 2021;93(2):924-933.
11. Harvey RA, Rassen JA, Kabelac CA, Turenne W, Leonard S, Klesh R, et al. Association of SARS-CoV-2 seropositive antibody test with risk of future infection. *JAMA Intern Med.* 2021;181(5):672-679.
12. Jalkanen P., Kolehmainen P, Häkkinen HK, Huttunen M, Tähtinen PA, Lundberg R, et al. COVID-19 mRNA vaccine induced antibody responses against three SARS-CoV-2 variants. *Nat Commun.* 2021;12(1):3991.
13. Grupel D, Gazit S, Schreiber L, Nadler V, Wolf T, Lazar R, et al. Kinetics of SARS-CoV-2 anti-S IgG after BNT162b2 vaccination. *Vaccine.* Aug 11;S0264-410X(21)01045-8. Epub PMID: 34393018
14. Wei J, Stoesser N, Matthews PC, Ayoubkhani D, Studley R, Bell I, et al. Antibody responses to SARS-CoV-2 vaccines in 45,965 adults from the general population of the United Kingdom. *Nat Microbiol.* July 2021:1-10. Epub. PMID: 34290390
15. Cox RJ, Brokstad KA. Not just antibodies: B cells and Tcells mediate immunity to COVID-19. *Nat Rev Immunol.* 2020;20(10):581-582.
16. Khoury DS, Cromer D, Reynaldi A, Schlub TE, Wheatley AK, Juno JA et al. Neutralizing antibody levels are highly predictive of immune protection from symptomatic SARS-CoV-2 infection. *Nat Med.* 2021;27(7):1205-1211.

Address for correspondence: Jennifer Kertes, Division of data & digital health, Maccabi Healthcare Services, rehov HaMered 27, Tel Aviv-Jaffa, 16825 Israel, email: dortal_j@mac.org.il

Reserved space. Do not place any text in this section. Include the mandatory author checklist or your manuscript will be returned. Use *continuous* line numbering in your manuscript.

Table 1: Demographic and Health Characteristics of vaccinated population by serology test status, Jan-Jun 2021, Maccabi HealthCare Services, Israel

Characteristic	Category	No. (%) Not Tested N=1,423,257	No. (%) Tested N=8,395
Gender	Males	683,946 (48.1)	2,774 (33.0)
	Females	739,311 (51.9)	5,621 (67.0)
Age Group	< 18	39,123 (2.7)	92 (1.1)
	18-44	644,038 (45.3)	2,199 (26.2)
	45-59	384,100 (27.0)	3,016 (35.9)
	60-74	255,377 (17.9)	2,515 (30.0)
	75+	100,619 (7.1)	573 (6.8)
Socioeconomic bracket	Low	481,470 (33.8)	3,202 (38.1)
	Middle	232,824 (16.4)	1,281 (15.3)
	High	708,963 (49.8)	3,912 (46.6)
Heart Disease	No	1,346,990 (94.6)	7,790 (92.8)
	Yes	76,267 (5.4)	605 (7.2)
Diabetes	No	1,297,140 (91.1)	7,342 (87.5)
	Yes	126,117 (8.9)	1,053 (12.5)
Hypertension	No	1,145,327 (80.5)	5,960 (71.0)
	Yes	277,930 (19.5)	2,435 (29.0)
CKD	No	1,353,406 (95.1)	7,715 (91.9)
	Yes	69,851 (4.9)	680 (8.1)
Immunosuppressive Disorder	No	1,396,529 (98.1)	7,411 (88.3)
	Yes	26,728 (1.9)	984 (11.7)

Table 2: Demographic and Health Characteristics of vaccinated population by PCR test status, June-July 2021, Maccabi HealthCare Services, Israel

Characteristic	Category	No. (%) Not Tested N=79,404	No. (%) Tested N=5,141
Gender	Males	33,871 (42.7)	2,128 (41.4)
	Females	45,533 (57.3)	3,013 (58.6)
Age Group	< 18	21,563 (27.2)	937 (18.2)
	18-44	37,470 (47.2)	2,338 (45.5)
	45-59	13,553 (17.1)	1,090 (21.2)
	60-74	5,672 (7.1)	657 (12.8)
	75+	1,146 (1.4)	119 (2.3)
Socioeconomic bracket	Low	10,744 (13.5)	1,339 (26.0)
	Middle	36,358 (45.8)	1,234 (24.0)
	High	32,302 (40.7)	2,568 (50.0)
Heart Disease	No	78,105 (98.4)	5,021 (97.7)
	Yes	1,299 (1.6)	120 (2.3)
Diabetes	No	76,320 (96.1)	4,903 (95.4)
	Yes	3,084 (3.9)	238 (4.6)
Hypertension	No	73,063 (92.0)	4,524 (88.0)
	Yes	6,341 (8.0)	617 (12.0)
CKD	No	78,058 (98.3)	5,012 (97.5)
	Yes	1,346 (1.7)	129 (2.5)
Immunosuppressive Disorder	No	78,193 (98.5)	5,010 (97.5)
	Yes	1,211 (1.5)	131 (2.5)

Reserved space. Do not place any text in this section. Include the mandatory author checklist or your manuscript will be returned. Use *continuous* line numbering in your manuscript.

Table 3: Demographic and Health Characteristics of vaccinated population by vaccination

313

period, Jan-May 2021, Maccabi HealthCare Services, Israel

314

Characteristic	Category	Jan-Feb N=821,231	Mar-May N=601,867
Gender	Males	394,546 (48.0)	285,089 (47.6)
	Females	426,685 (52.0)	313,482 (52.4)
Age Group	< 18	21,232 (2.6)	62,793 (10.4)
	18-44	211,351 (25.7)	414,514 (68.9)
	45-59	289,813 (35.3)	86,013 (14.3)
	60-74	219,437 (26.7)	28,620 (4.8)
	75+	79,398 (9.7)	9,927 (1.6)
Socioeconomic bracket	Low	102,689 (12.5)	125,924 (20.9)
	Middle	398,474 (48.5)	307,724 (51.1)
	High	320,068 (39.0)	168,219 (27.9)
Heart Disease	No	755,979 (92.1)	592,608 (98.5)
	Yes	65,252 (7.9)	9,259 (1.5)
Diabetes	No	717,950 (87.4)	581,893 (96.7)
	Yes	103,281 (12.6)	19,974 (3.3)
Hypertension	No	593,368 (72.3)	556,545 (92.5)
	Yes	227,863 (27.7)	45,322 (7.5)
CKD	No	762,717 (92.9)	592,447 (98.4)
	Yes	58,514 (7.1)	9,420 (1.6)
Immunosuppressive Disorder	No	808,061 (98.4)	598,499 (99.4)
	Yes	13,170 (1.6)	3,368 (0.6)

315

Table 4: Mean antibody level by demographic and health variables and time from vaccination (days), Jan-June 2021, Maccabi HealthCare Services, Israel

316

317

318

Characteristic	Measure	Days from vaccination to serology test						p value
		7-29	30-59	60-89	90-119	120-150	150+	
Total population	N	2,457	1,845	946	827	500	1,820	
	Mean	14,008	8,175	4,365	2,706	1,773	1,411	<.001
	(SD)	(12,146)	(7,742)	(5,022)	(3,957)	(1,934)	(1,751)	
	Median	11,322	6,080	2,974	1,683	1,217	1,217	
Gender								
	Males	N	1,075	676	354	269	105	295
Females	Mean	12,278	6,837	3,799	2,633	1,695	1,309	<.001
	N	1,382	1,169	592	558	395	1,525	
Age group	Mean	15,354	8,949	4,703	2,740	1,794	1,431	
	< 60	N	1,453	1,111	564	444	366	1,369
60+	Mean	17,169	9,526	5,044	3,099	1,959	1,439	<.001
	N	1,004	734	382	383	134	451	
Socioeconomic Status	Mean	9,433	6,130	3,362	2,249	1,266	1,327	
	Low	N	553	278	143	113	59	135
Middle	Mean	15,994	10,048	4,481	4,056	2,443	1,625	<.001
	N	1,088	827	414	392	259	932	
High	Mean	13,989	8,473	4,739	2,523	1,695	1,468	<.001
	N	816	740	389	322	182	753	
Heart disease	Mean	12,687	7,139	3,924	2,454	1,667	1,301	<.001
	N	206	165	79	75	25	55	
Diabetes	Mean	7,341	4,307	2,520	2,455	690	1,575	<.001
	N	377	245	121	123	57	130	
HTN	Mean	8,624	6,647	2,742	2,189	843	1,401	<.001
	N	803	572	274	290	133	363	
CKD	Mean	9,930	6,624	3,032	2,118	1,341	1,409	<.001
	N	248	163	81	88	45	55	
Immunosuppressive Disorder	Mean	6,756	4,331	2,614	2,339	887	1,910	<.001
	N	307	280	156	126	57	58	
Disorder	Mean	6,824	4,371	2,336	1,500	1,033	1,813	<.001
	N							

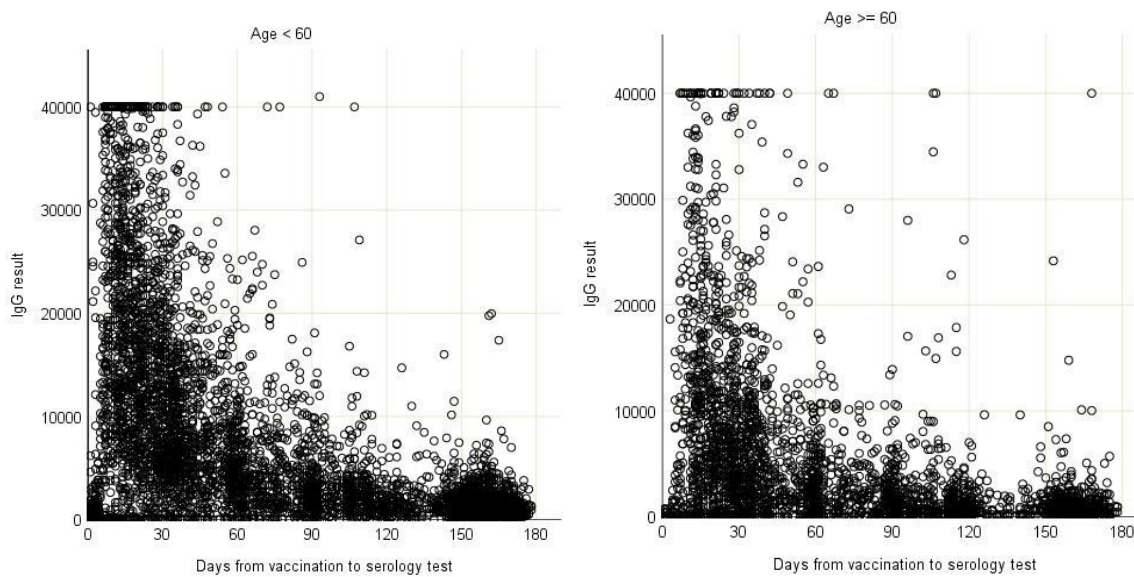
319

Reserved space. Do not place any text in this section. Include the mandatory author checklist or your manuscript will be returned. Use *continuous* line numbering in your manuscript.

Table 5: Factors associated with Covid-19 infection (logistic regression model), Jan-May 2021, Maccabi HealthCare Services, Israel

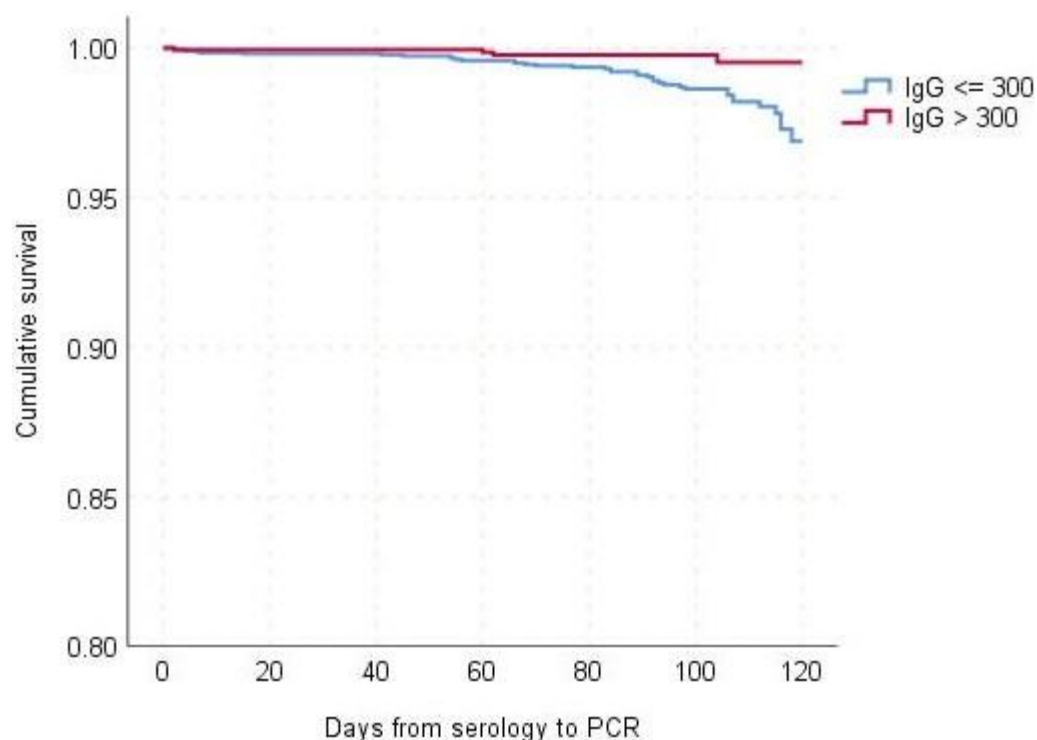
Variable	Category	N	OR	95% CI
Vaccination period	Jan-Feb	821,231	1.61	1.45-1.79
	Mar-May	601,867	-	-
Gender	Males	681,382	0.11	1.01-1.20
	Females	741,716	-	-
Age Group	< 18	84,025	-	-
	18-44	625,865	1.92	1.51-2.49
	45-59	375,826	1.88	1.46-2.45
	60-74	248,057	1.54	1.17-2.04
Socioeconomic	Low	228,613	-	-
	Moderate	706,198	2.85	2.34-3.50
	High	488,287	4.40	3.61-5.41
Heart Disease	No	1,348,587	-	-
	Yes	74,511	1.35	1.11-1.79
Diabetes	No	1,299,843	-	-
	Yes	123,255	1.03	0.87-1.12
Hypertension	No	1,149,913	-	-
	Yes	273,185	0.98	0.86-1.22
CKD	No	1,355,164	-	-
	Yes	67,934	0.82	0.63-1.05
Immunosuppressive Disorder	No	1,406,596	-	-
	Yes	16,502	0.90	0.58-1.63

Figure 1: Serology levels of vaccinated population over time by age group, Jan-June 2021, Maccabi HealthCare Services, Israel



Reserved space. Do not place any text in this section. Include the mandatory author checklist or your manuscript will be returned. Use *continuous* line numbering in your manuscript.

Figure 2: Kaplan-Meier cumulative survival for PCR positive outcome, June-July 2021, Maccabi HealthCare Services, Israel



Appendix

Table A1: Factors associated with ln of serology titers (linear regression model)

Factor	β	p value
Days from vaccination	-.016	<.0001
Gender (males)	-.347	<.0001
Age (years)	-.022	<.0001
Socio-economic status (middle)	-.078	.033
Socio-economic status (high)	-.184	<.0001
Heart Disease	-.242	<.0001
Diabetes	-.108	.007
HTN	-.105	.001
CKD	-.318	<.0001
Immunosuppressive disorder	-.888	<.0001

$R^2 = .498$. Dependent variable: ln of serology titer. Independent variables entered in hierarchical model: days from vaccination; gender, age and socio-economic status; chronic illnesses.

Reserved space. Do not place any text in this section. Include the mandatory author checklist or your manuscript will be returned. Use *continuous* line numbering in your manuscript.

Table A2: Factors associated with a positive PCR result (univariate analysis)

Factor	N	No. positive (%)	p value*
Gender			<.01
Male	681,382	1,096 (0.16)	
Female	741,716	1,066 (0.14)	
Age Group			<.01
<18	84,025	67 (0.08)	
18-44	625,865	916 (0.15)	
45-59	375,826	697 (0.19)	
60-74	248,057	387 (0.16)	
75+	89,325	95 (0.11)	
Socioeconomic			<.01
Low	228,613	106 (0.05)	
Middle	706,198	976 (0.14)	
High	488,287	106 (0.05)	
Heart Disease			.03
No	1,348,587	2,026 (0.15)	
Yes	74,511	136 (0.18)	
Diabetes			.47
No	1,299,843	1,982 (0.15)	
Yes	123,255	177 (0.14)	
Hypertension			.22
No	1,149,913	1,770 (0.15)	
Yes	273,185	392 (0.14)	
CKD			.01
No	1,355,164	2,083 (0.15)	
Yes	67,934	79 (0.12)	
Immunosuppressive Disorder			.76
No	1,406,560	2,139 (0.15)	
Yes	16,538	23 (0.14)	

* Chi square/Fisher exact test statistic