

**Decoupling sleep and brain size in childhood:
An investigation of genetic covariation in the ABCD study**

Leanna M. Hernandez, Ph.D.¹
Minsoo Kim, B.S.^{1,2,9}
Cristian Hernandez, B.S.¹
Wesley Thompson, Ph.D.³
Chun Chieh Fan M.D., Ph.D.⁴
Adriana Galván, Ph.D.⁵
Mirella Dapretto, Ph.D.^{1,6}
Susan Y. Bookheimer, Ph.D.^{1,7}
Andrew Fuligni, Ph.D.^{1,5}
Michael Gandal, M.D., Ph.D.^{1,2,8,9}

¹Department of Psychiatry and Biobehavioral Sciences, Semel Institute, David Geffen School of Medicine, University of California Los Angeles, 695 Charles E. Young Drive South, Los Angeles, CA 90095, USA.

²Program in Neurobehavioral Genetics, Semel Institute, David Geffen School of Medicine, University of California, Los Angeles, Los Angeles, CA 90095, USA.

³Department of Family Medicine and Public Health, University of California, San Diego, San Diego, CA 92093, USA.

⁴Center for Human Development, University of California, San Diego, San Diego, CA 92093, USA.

⁵Department of Psychology, University of California, Los Angeles, Los Angeles, CA 90095, USA.

⁶Ahmanson-Lovelace Brain Mapping Center, University of California, Los Angeles, Los Angeles, CA 90095, USA.

⁷Staglin IMHRO Center for Cognitive Neuroscience, University of California, Los Angeles, Los Angeles, CA 90024, USA.

⁸Department of Neurology, Center for Autism Research and Treatment, Semel Institute, David Geffen School of Medicine, University of California, Los Angeles, 695 Charles E. Young Drive South, Los Angeles, CA 90095, USA.

⁹Department of Human Genetics, David Geffen School of Medicine, University of California, Los Angeles, Los Angeles, CA 90095, USA.

Author Disclosures: All authors report no biomedical financial interests or potential conflicts of interests.

Corresponding authors: Michael Gandal, MD, Ph.D, Neuroscience Research Building, 635 Charles E Young Dr S, Los Angeles, CA 90095, University of California, Los Angeles, MGandal@mednet.ucla.edu; Leanna Hernandez, PhD, Neuroscience Research Building, 635 Charles E Young Dr S, Los Angeles, CA 90095, University of California, Los Angeles, leannahernandez@ucla.edu;

Abstract

Background: Childhood sleep problems are common and among the most frequent and impairing comorbidities of childhood psychiatric disorders. However, little is known about the genetic architecture of childhood sleep and potential etiological links between sleep, brain morphology, and pediatric-onset psychiatric symptoms.

Methods: Using data from the Adolescent Brain and Cognitive Development Study ($N_{\text{Phenotype}}=4,428$ for discovery/replication, $N_{\text{Genetics}}=4,728$, age: 9-10), we assessed phenotypic relationships, heritability, and genetic correlation between childhood sleep disturbances (SDs: insomnia, arousal, breathing, somnolence, hyperhidrosis, sleep-wake transitions), brain size (surface area [SA], cortical thickness, volume), and dimensional psychopathology.

Results: SDs showed widespread positive associations with multiple domains of childhood psychopathology; however, only insomnia showed replicable associations with smaller brain SA. Among the SDs assessed, only insomnia showed significant SNP-based heritability ($h^2_{\text{SNP}}=0.15$, $p<0.05$), and showed substantial genetic correlations with externalizing symptoms and attention-deficit hyperactivity disorder (ADHD; r_G 's >0.80 , p 's <0.05), suggesting significant pleiotropy across these complex childhood traits. We find no evidence of genetic correlation between childhood insomnia and brain size. Polygenic risk scores (PRS) calculated from genome-wide association studies (GWAS) of adult insomnia and adult brain size did not predict childhood insomnia; instead, PRS trained using ADHD GWAS predicted decreased SA at baseline, as well as insomnia and externalizing symptoms longitudinally.

Conclusions: These findings demonstrate a distinct genetic architecture underlying childhood insomnia and brain size and indicate that childhood insomnia should be considered along the dimensional axis of externalizing traits. Uncovering shared and unique genetic risk across childhood traits may inform our understanding of the developmental origins of comorbid psychiatric disorders.

Introduction

Sleep is a fundamental biological process that is critical for optimal physical and cognitive development.¹⁻⁵ The structure of sleep and circadian rhythms undergo substantial shifts across the lifespan, especially during critical adolescent periods when many psychiatric symptoms emerge. Sleep disturbance is nearly universally observed in childhood and adult psychiatric disorders and often among the most impairing comorbidities.⁶ In adults, genome wide association studies (GWAS) have shown that sleep-related behaviors are heritable and polygenic, with more than 200 associated genetic loci, and show significant genetic correlations with adult psychiatric disorders including depression and schizophrenia.⁷⁻¹⁰ Genetic variants associated with adult sleep disorders are enriched for genes expressed in the brain and have implicated pathways involved in locomotor behavior, neurodevelopment, and synaptic transmission, among others,⁷⁻¹⁰ suggesting a neurogenetic basis for individual differences in sleep behavior. Yet, while the heritable polygenic contributions to adult sleep disturbance have been established, much less is known about the origins of sleep-related traits in childhood, a developmental period during which sleep disruptions are extremely common, affecting an estimated 20-30% of the general pediatric population.¹¹⁻¹³ Identifying a genetic basis for childhood sleep disturbance – and potential shared genetic etiology with neurodevelopmental, psychiatric disorders – would provide a critical foundation for understanding fundamental aspects of developmental biology and for fostering potential clinical interventions for the millions of children who experience sleep disturbances.

Childhood and adolescence are characterized by age-related decreases in brain volume, surface area, and cortical thickness,^{14,15} coinciding with normative shifts in the timing of homeostatic and circadian rhythms,¹⁶ and the emergence of life-long chronic psychiatric disorders.¹⁷ Thus, biological interactions between sleep, brain structure, and mental health may be particularly important during childhood, when dynamic changes occur in all three domains. Indeed, recent neuroimaging research suggests that childhood psychiatric symptoms (attention-deficit/hyperactivity disorder [ADHD],¹⁸ depression¹⁹) predict future sleep disturbances and moderate the association between smaller brain size and sleep problems. However, few large-scale genetics studies have been conducted to identify a heritable basis for sleep disturbance in childhood or to elucidate potential genetic relationships between sleep disturbance and childhood mental health,¹⁸⁻²⁰ leaving unanswered how polygenic risk for sleep, brain, and psychiatric traits interact over the course of development. By contrast, there has been robust and well-powered genomics research in adults indicating significant genetic pleiotropy between adult insomnia, sleep duration, neuropsychiatric disorders (e.g., depression, anxiety, ADHD, and schizophrenia^{7,8,10}), and brain surface area,²¹ indicating that genetic risk for these traits in

adulthood is in-part shared. Parallel analyses of the shared genetic architecture between childhood sleep psychiatric symptoms, and brain structure have not been performed and may provide novel insights into the developmental origins of comorbid psychiatric/brain traits.

To address these questions, we perform a comprehensive examination of the phenotypic and genetic relationship between sleep, mental health, and brain structure in youth who participated in baseline and follow-up assessments of the Adolescent Brain and Cognitive Development (ABCD) study.²² Using parent-report data of children's sleep behavior (i.e., Sleep Disturbance Scale for Children²³) and behavioral/psychiatric symptoms (i.e., Child Behavior Checklist²⁴), we determine the extent to which individual variability across 6 dimensions of sleep disturbance (i.e., insomnia, arousal, breathing, somnolence, hyperhidrosis, sleep-wake transitions) predict individual variability in 20 subscales of psychiatric symptomatology, and magnetic resonance imaging (MRI) measures of brain volume, surface area, and cortical thickness at 9-10-years of age. To estimate the contribution of common genetic factors, we calculate the heritability of – and genetic correlations between – childhood sleep, psychiatric symptoms, and global brain size. Finally, we examine the extent to which polygenic risk scores (PRS) for sleep, brain, and psychiatric traits predict brain and behavioral phenotypes in children at 9-10-years of age and psychiatric symptoms 1-year later.

Methods and Materials

Subjects

Participants were youth who completed the baseline and 1-year follow-up assessment of the ABCD study,²² an ongoing multi-site longitudinal investigation of brain development in the United States. Subjects were recruited from schools within geographical areas that approximate the sociodemographic diversity of the national population.²⁵ The current analysis was completed using de-identified structural neuroimaging, genetic, demographic and behavioral data obtained from the ABCD 2.0.1 National Data Archive (NDA) data release (NDAR DOI: 10.15154/1504041).

Sleep Disturbance Scale for Children (SDSC)

The SDSC²³ was used to generate dimensional indices of sleep problems. The SDSC is a parent-report questionnaire designed to identify the presence of sleep disturbances over the past 6 months in children with/without clinically significant sleep disorders. Individual item-level scores on the SDSC are grouped into 6 sleep-disorder subscales: Disorders of Initiating and Maintaining Sleep (DIMS), Sleep Breathing Disorders (SBD), Disorders of Arousal (DA), Sleep-Wake Transition Disorders (SWTD), Disorders of Excessive Somnolence (DOES), and Sleep

Hyperhidrosis (SHY). The DIMS subscale encompasses a single question relating to sleep duration, as well as several questions indexing sleep quality (e.g., insomnia-related symptoms); we focused our analysis on DIMS questions indexing insomnia-related symptoms (Supplementary Materials). For all SDSC sleep measures, higher scores are indicative of more severe sleep problems.

Child Behavior Checklist (CBCL)

The CBCL²⁴ is a widely used parent-report questionnaire indexing child behavior across a number of psychiatric domains. Here, we assess the relationship between sleep and t-scores on 14 CBCL subscales, as well as 6 DSM-oriented subscales.

NIH Toolbox Cognition Battery

Cognitive function was assessed using the NIH Toolbox® Cognition Battery,²⁶ which was administered to children on an iPad. Summary scores indexing Cognitive Function Composite Score, Fluid Cognition Composite Score, and Crystallized Cognition Composite Scores were obtained for each child.

Structural Magnetic Resonance Imaging (sMRI)

Structural MRI (sMRI) data were collected by individual sites affiliated with the ABCD consortium on either a Siemens Prisma, Phillips, or GE 750 3T scanner (see Supplementary Materials for scan parameters).²⁷ Morphometric measurements of cortical thickness (CT), surface area (SA), and subcortical volume (VOL) were calculated in FreeSurfer using the Desikan parcellation atlas.²⁸ As recommended in the ABCD NDA 2.0.1 Release Notes for Imaging Instruments, exclusionary criteria included subjects with MRI findings that were considered for clinical referral (N=402), subjects with poor quality T1 images (as described above; N=11), and subjects for whom the FreeSurfer parcellation performed poorly (N=391).

Phenotypic Associations

To demonstrate the robustness of the reported phenotypic associations, the sample was split into discovery and replication cohorts. One child per twin/triplet was included to ensure the statistical independence of the data in each of the cohorts; siblings were randomly assigned. The final sample for phenotypic association analyses consisted of 8,856 subjects, which were split into discovery (N=4,428) and replication (N=4,428) cohorts using the ISLR package in R (demographics provided in Supplementary Table 1). Results were deemed to be significant and

to replicate if they survived FDR correction ($q < 0.05$) in the discovery cohort and demonstrated a $p < 0.05$ in the replication cohort.

Statistical analyses were performed in R v4.0.2. Linear mixed-effects models were run using the lme4 package to test the relationship between SDSC subscales and sMRI indices. Dependent variables included CT and SA (34 regions per hemisphere), as well as 39 measures of subcortical VOL. Independent variables were sleep-related phenotypes (i.e., insomnia, SBD, DA, SWTD, DOES, and SHY). Age, socioeconomic status (SES; computed as the average of parental education and family income), sex, and parent-reported ethnicity were specified as fixed effects; family ID (to control for sibling relatedness) and MRI scanner were modeled as random effects. Analyses were performed with/without controlling for global sMRI measures, by including either whole brain VOL, mean SA, or mean CT as covariates. The relationship between CBCL and SDSC subscales were assessed using a series of log-linked gamma general linear models (GLM) and identical covariates.

Genotyping

DNA was extracted from saliva samples and genotype data for 733,293 single nucleotide polymorphisms (SNPs) was generated using the Affymetrix NIDA Smokescreen Array. Sample preparation and genotyping was performed at the Rutgers University Cell and DNA Repository (RUCDR; see Supplementary Materials). The ABCD DAIC applied quality control (QC) filters based on call signals and call rates and removed individuals who had a missing rate of greater than 20%, or for whom there may have been sample contamination. The NDA download thus consisted of genotype data for 10,627 subjects across 517,724 unique SNP markers.

SNP-Based Heritability and Genetic Correlations

Ancestry was determined by merging ABCD data with data from the 1000 Genomes Project²⁹ followed by principal component analysis of the merged dataset and application of a k-nearest neighbors classification algorithm to the first four ancestry principal components. Subsequent analyses were restricted to subjects of European ancestry to control for population stratification. PLINK v1.90³⁰ was used to prune SNPs for linkage disequilibrium (LD), minor allele frequency $< 1\%$, missingness per individual $> 10\%$, missingness per marker $> 10\%$, and Hardy-Weinberg equilibrium ($p < 10^{-6}$). The genetic relationship matrix (GRM) was computed from autosomal chromosomes using GCTA v1.93.³¹ One subject from each pair of individuals with an estimated relatedness greater than 0.05 was removed from further analyses, leaving 4,728

unrelated European subjects and 157,123 genotyped SNPs that passed QC. Ancestry principal components (PCs) for the European cohort were calculated in PLINK v1.90.

Heritability was estimated using GCTA's restricted maximum likelihood (REML). Due to non-normality, SDSC subscales were binarized; subjects scoring in the top 25% of for each sleep subscale were defined as experiencing sleep problems (i.e., cases) and the remainder served as a control group. A rank-based inverse normal transformation was applied to continuous phenotypes (i.e., cognition and neuroimaging variables) to correct for deviations from normality. For heritability estimates of behavioral and cognitive measures, age, SES, sex, 10 ancestry PCs, and genotyping batch were included as covariates. Heritability estimates for neuroimaging phenotypes indexing brain size used identical covariates in addition to MRI scanner. Bivariate genetic correlations were calculated in GCTA³² with identical covariates.

Polygenic Risk Score Profiling

To assess the effects of subject-level genetic liability, polygenic risk scores (PRS) were computed for European subjects using PRS-CS³³ with summary statistics from GWAS of insomnia,⁷ ADHD,³⁴ and brain surface area.²¹ Genotype data was imputed using the Michigan Imputation Server³⁵ using the TOPMed reference panel with Eagle v2.3 phased output and mixed ancestry for QC. Individuals with >10% missing genotypes, and SNPs with >10% missingness rate, minor allele frequency <5%, or out of Hardy-Weinberg equilibrium ($p < 10^{-6}$) and SNPs in the major histocompatibility complex were removed, leaving 4,534,127 genetic variants. A relatedness cutoff of 0.05 was applied, leaving 3,386 subjects at baseline and 1,669 at follow-up. PRS were generated using the European LD reference and a global shrinkage parameter of 1e-2. The extent to which youth's PRS predicted the binary insomnia phenotype was assessed using logistic regression controlling for age, SES, sex, and 10 ancestry PCs. Predictions of baseline and follow-up CBCL subscales were assessed using log-linked gamma GLM using identical covariates. Linear mixed-effects models were used to assess the relationship between PRS and brain structure, using an additional covariate of MRI scanner. All regressions using follow-up data were controlled for sleep or psychiatric symptoms at the first timepoint.

Results

Widespread Associations between Child Sleep Disturbance and Psychiatric Symptoms

Phenotypic associations between sleep and psychiatric symptoms were tested in large multi-ethnic discovery and replication cohorts (N's=4,428). Regression analyses revealed robust and replicable positive associations; greater frequency of any sleep disturbance predicted higher

levels of psychiatric symptomatology across all 20 CBCL subscales (β 's=0.01-0.04, discovery $q<0.05$, replication $p<0.05$; Figure 1; Supplementary Table 2-7), demonstrating broad associations between childhood SDs and behavioral/emotional problems in children. In addition, a small, but significant negative relationship was observed between insomnia and fluid cognition ($\beta=-0.003$, discovery $q<0.05$, replication $p<0.05$; Figure 1; Supplementary Table 2).

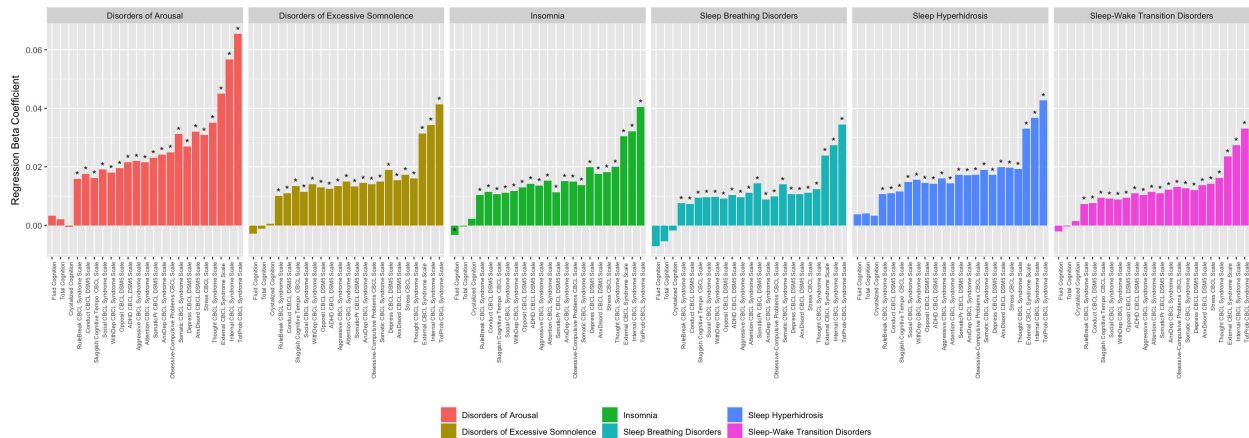


Figure 1. Broad phenotypic associations between childhood sleep and psychiatric symptoms. Sleep disturbances show replicable associations (discovery [N=4,428], replication [N=4,428]) with Child Behavior Checklist (CBCL) subscales of behavioral/emotional problems and NIH Toolbox fluid cognition. Variables showing a significant association with sleep subscales in the discovery cohort after FDR correction ($q<0.05$) and demonstrating a nominally significant association in the replication cohort ($p<0.05$) are denoted by an asterisk (*). Data shown reflects associations in the discovery cohort. For statistical associations in the replication cohort, see Supplementary Materials.

Childhood Insomnia is Uniquely Associated with Decreased Brain SA, VOL

We next examined the relationship between childhood SDs and global measures of brain structure (mean CT, mean SA, and whole brain VOL) at baseline. More frequent insomnia showed replicable associations with lower SA and smaller VOL (discovery $q<0.05$, replication $p<0.05$; Figure 2A; Supplementary Table 8). No other SD showed replicable associations with global brain structure, nor were any measures associated with cortical thickness. As such, childhood insomnia was uniquely associated with global measures of childhood brain structure.

To test for regional associations between SDSC sleep domains and brain structure, linear mixed-effects models were run with regional-measures of CT, SA, and VOL as dependent variables and each sleep-related phenotype as an independent variable. Greater frequency of insomnia symptoms was related to reduced SA in frontal, temporal and parietal regions, as well as smaller VOL of cerebral white matter (Figure 2B; Supplementary Tables 9-10). Regional findings were no longer significant when controlling for global measures, indicating that the association between insomnia and whole-brain SA and VOL is an important contributor to the

observed region-level effects (Supplementary Tables 11-12). No other SDSC subscales demonstrated replicable effects (Supplementary Tables 13-29).

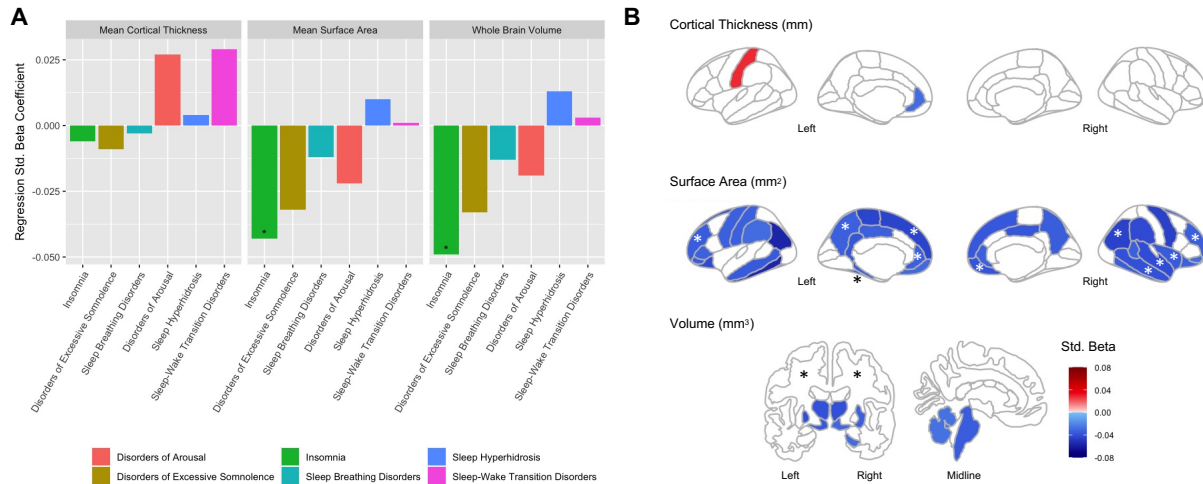


Figure 2. More frequent insomnia symptoms is associated with smaller brain size in 9–10-year-old youth.

A) Associations between sleep disturbances and global measures of mean cortical thickness, mean surface area, and whole brain volume. Variables showing a significant association with sleep subscales in the discovery cohort (N=4,428) after FDR correction ($q < 0.05$) and demonstrating a nominally significant association in the replication cohort (N=4,428; $p < 0.05$) are denoted by an asterisk (*). **B)** Brain regions demonstrating a significant association with insomnia in the discovery cohort ($q < 0.05$) are shown in color; regions also demonstrating a significant association in the replication cohort ($p < 0.05$) are denoted by an asterisk (*). In both panels, plotted data reflects associations in the discovery cohort. For statistical associations in the replication cohort, see Supplementary Materials.

Childhood Insomnia Exhibits Significant SNP-based Heritability

We next sought to determine the contribution of common genetic variation to childhood sleep, psychiatric symptoms, and brain structure. Among childhood sleep-related phenotypes, significant SNP-based heritability was observed for insomnia only ($h^2_{\text{SNP}} = 0.15$, $p < 0.05$; Figure 3A, Supplementary Table 30). Significant SNP-based heritability was also observed for CBCL subscales indexing ADHD, attention problems, somatic problems, externalizing, oppositional defiant disorder, and total problems ($h^2_{\text{SNP}} = 0.15-0.22$, p 's < 0.05), NIH Toolbox measures of fluid, crystallized, and fluid cognition ($h^2_{\text{SNP}} = 0.29-0.36$, p 's < 0.001), and neuroimaging measures of whole brain volume, mean surface area, and mean cortical thickness ($h^2_{\text{SNP}} = 0.27-0.37$, p 's < 0.01).

Genetic Overlap between Childhood Insomnia, ADHD, and Externalizing Behaviors

Given the observed heritability of childhood insomnia, and strong genetic association between adult insomnia and brain structure²¹ we next investigated potential shared genetic influences on psychiatric symptoms and brain structure in childhood. Pairwise genetic correlations were performed between traits that demonstrated significant SNP-heritability. Significant positive genetic correlations were observed between insomnia and CBCL total problems, externalizing,

and ADHD (r_G 's>0.84; p 's<0.05; Figure 3B; Supplementary Table 30). For neuroimaging traits, significant positive correlations were observed between whole-brain VOL and mean SA, crystalized, and total cognition, and between mean SA and crystalized cognition (r_G 's>0.53, p 's<0.05; Supplementary Table 31). Notably, however, we did not detect significant genetic correlations between childhood insomnia and brain CT, SA, or VOL. These results indicate a shared genetic basis among childhood insomnia, ADHD, and externalizing behaviors that does not contribute to decreased brain size.

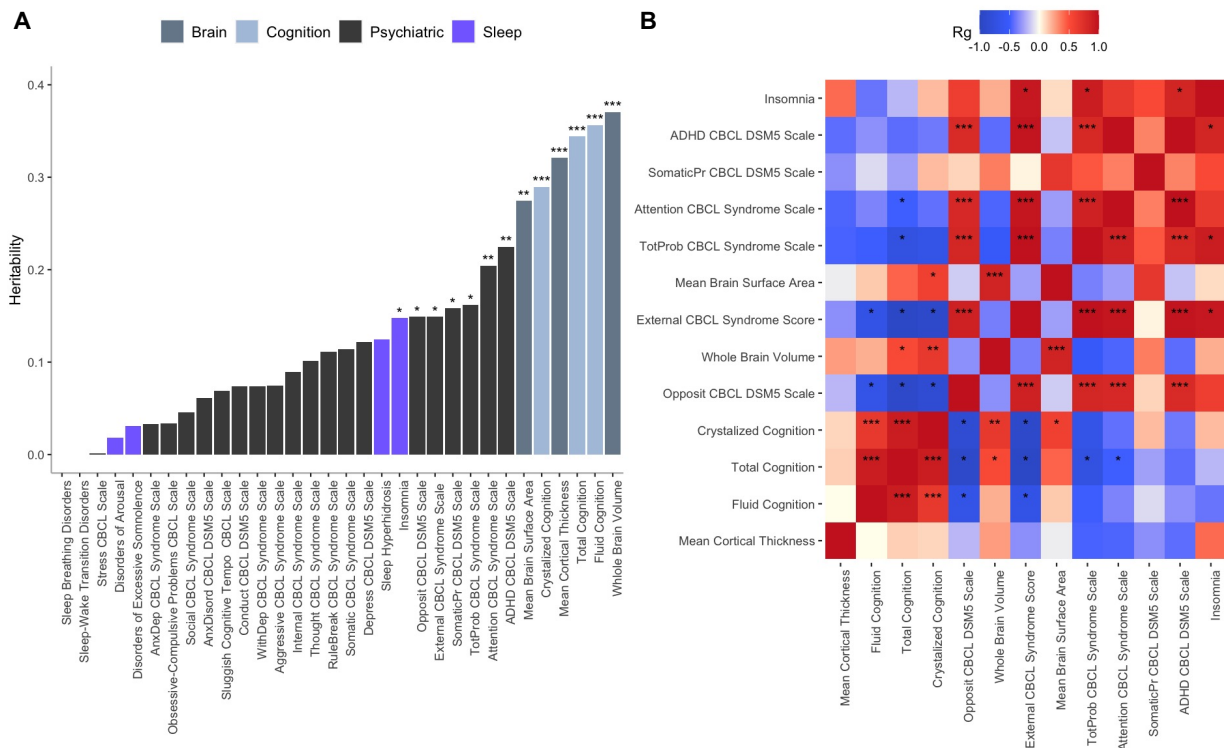


Figure 3. Genetic analyses indicate that childhood insomnia is heritable and demonstrates significant genetic correlation with ADHD and externalizing symptoms. **A)** SNP-based heritability of childhood sleep-related behaviors, psychiatric symptoms, and brain size (N=4,728 [European ancestry]). Among sleep-related traits, only insomnia demonstrates significant SNP-based heritability ($h^2_{SNP}=0.15$, $p<0.05$). **B)** Genetic correlations between pairs of traits that displayed significant SNP-heritability. Childhood insomnia shows significant genetic pleiotropy with attention deficit hyperactivity disorder (ADHD), externalizing, and total problems subscales of the Child Behavior Checklist (CBCL; r_G 's>0.84, p 's<0.05; N=4,728 [European ancestry]). * $p<0.05$, ** $p<0.01$, *** $p<0.001$.

Distinct Genetic Contributions to Childhood versus Adult Insomnia

The previous data identify a heritable basis for childhood insomnia, exhibiting genetic and phenotypic overlap with ADHD/externalizing symptoms. To replicate and extend these associations, we calculated polygenic risk scores (PRS) using the largest available GWAS summary statistics of insomnia (in adults) and ADHD. Surprisingly, PRS trained using weights

derived from *adult* insomnia GWAS did not predict the frequency of *childhood* insomnia symptoms at 9-10-years of age ($\beta_{Std.}=0.006$, $p=N.S.$; Figure 4A), frequency of insomnia symptoms at follow-up 1-year later ($\beta_{Std.}=0.005$, $p=N.S.$), or the binary insomnia phenotype at either timepoint (Baseline $\beta_{Std.}=0.07$, Follow-up $\beta_{Std.}=0.04$, p 's= $N.S.$; Figure 4B). The insomnia PRS did, however, predict baseline ADHD symptoms ($\beta_{Std.}=0.006$, $p<0.01$; Figure 4B), indicating that the GWAS was adequately powered to detect phenotypic associations. Mirroring our observed genetic correlations, we found that higher ADHD PRS was associated with the binary insomnia phenotype at both baseline ($\beta_{Std.}=0.11$, $p<0.05$) and 1-year follow-up timepoints ($\beta_{Std.}=0.15$, $p<0.05$; Figure 4B). As a positive control, ADHD PRS also significantly predicted baseline and follow-up externalizing (Baseline $\beta_{Std.}=0.02$, Follow-up $\beta_{Std.}=0.01$, p 's <0.05) and ADHD symptoms (Baseline $\beta_{Std.}=0.01$, Follow-up $\beta_{Std.}=0.01$, p 's <0.01 ; Figure 4B). Together, these results demonstrate that the common genetic variants contributing to the heritability of insomnia symptoms in adults are largely distinct from those in children.

Insomnia-Brain Structure Associations are Mediated by ADHD PRS

Finally, we sought to better understand the observed, replicated phenotypic associations between insomnia and decreased brain VOL/SA. Here, we generated PRS to predict the genetic component of brain SA, using the largest available GWAS from ENIGMA.²¹ As a positive control, SA PRS very strongly predicted brain SA in the ABCD cohort ($\beta_{Std.}=0.23$, $p<0.001$; Figure 4B). In contrast, SA PRS was not associated with childhood insomnia symptoms ($\beta_{Std.}=0.08$, $p=N.S.$), affirming our null genetic correlation results. Previous work has identified a negative genetic association between ADHD and intracranial volume.³⁶ To determine whether genetic overlap with ADHD could account for our observed insomnia-brain structure associations, we performed a series of follow-up analyses in brain regions where we found replicable phenotypic associations (i.e., regions shown in Figure 2B). Notably, ADHD PRS significantly predicted lower SA in three regions — left superior frontal gyrus ($\beta_{Std.}=-0.04$, $p<0.05$), left rostral middle frontal gyrus ($\beta_{Std.}=-0.04$, $p<0.05$), and right insula ($\beta_{Std.}=-0.03$, $p<0.05$). Additionally, we found that the association between insomnia and brain SA disappeared when conditioning on ADHD. Together, these findings support a dissociable pleiotropic model in which genetic risk for ADHD contributes separately to both smaller brain SA and symptoms of insomnia in childhood, such that insomnia symptoms are not directly mediated by brain structure (Figure 4C). In support of this model, we further observed that ADHD PRS continues to predict the binary insomnia phenotype at baseline and follow-up timepoints even when controlling for brain structure (i.e., mean cortical SA; Baseline

$\beta_{Std.}=0.11$, Follow-up $\beta_{Std.}=0.15$, p 's< 0.05) and its potential genetic drivers (i.e., SA PRS; Baseline $\beta_{Std.}=0.11$, $\beta_{Std.}=0.15$, p 's<0.05). Altogether, these findings greatly refine our understanding of the genetic architecture of childhood sleep disturbance, as well as its relationship to adult sleep disturbance, childhood brain structure, and developmental psychopathology.

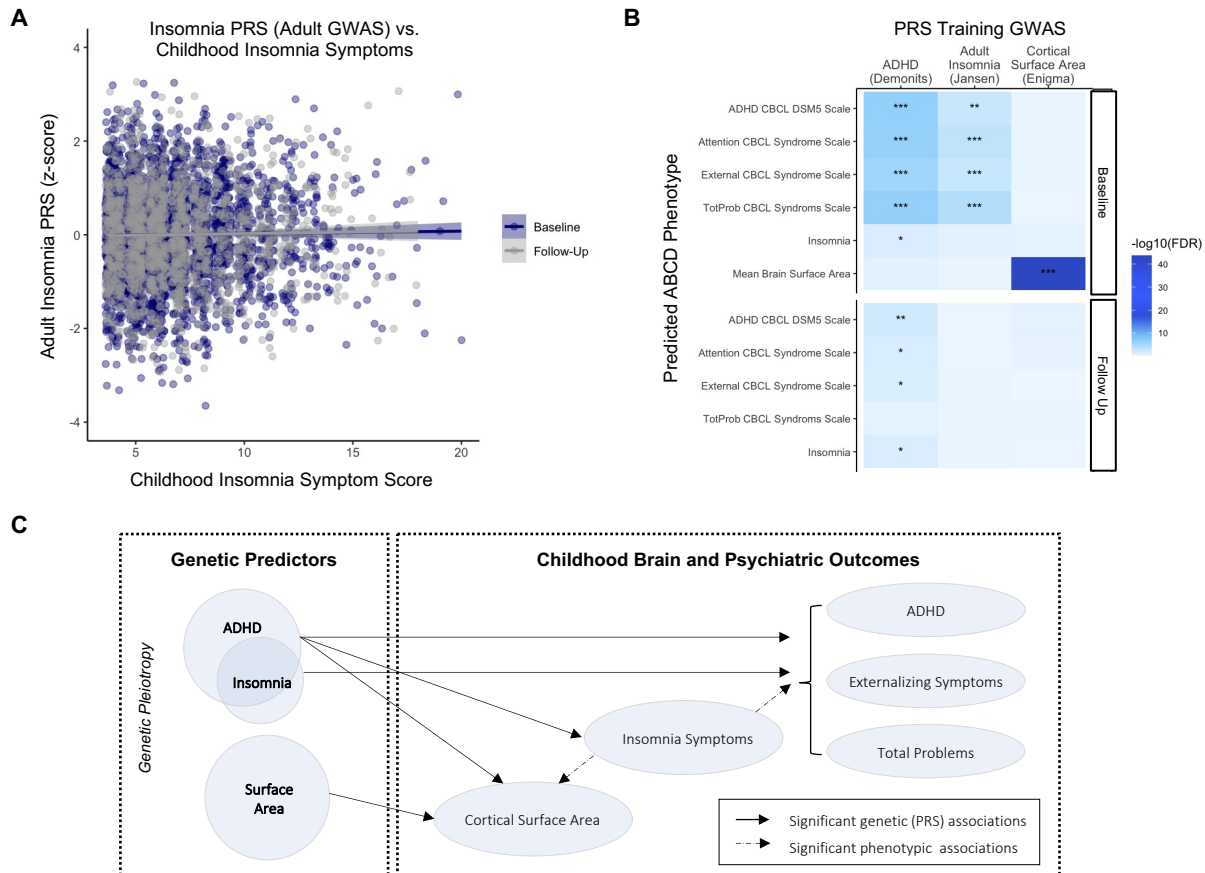


Figure 4. Polygenic risk for ADHD – but not insomnia – contributes to smaller brain size, insomnia, and externalizing behaviors in childhood. **A)** Polygenic risk scores (PRS) trained using weights from GWAS of insomnia (Jansen et al., 2019) in adulthood do not predict insomnia symptoms in 9-10-year-old children (baseline) or at follow-up 1-year later (p 's=N.S.). **B)** PRS trained using GWAS of ADHD (Demontis et al., 2019) predict not only externalizing-related behaviors at baseline and follow-up, but also predict insomnia at both time points. **C)** Proposed model of associations between genetic risk, sleep, and mental health outcomes. The pleiotropic effects of shared genetic risk between ADHD and insomnia drive observations of smaller brain surface area, more frequent insomnia symptoms, and childhood externalizing symptoms. * p <0.05, ** p <0.01, *** p <0.001.

Discussion

Leveraging longitudinal data from a population-based, demographically diverse sample of youth, the current study examined phenotypic relationships, heritability, and genetic correlations between childhood sleep disturbances, brain size, and dimensional measures of psychopathology. Among the six domains of childhood sleep disturbances examined (i.e.,

insomnia, arousal, breathing, somnolence, hyperhidrosis, sleep-wake transitions), only childhood insomnia showed replicable associations with brain size and was heritable (h^2_{SNP} 0.15). We demonstrate positive genetic correlations between insomnia and ADHD/externalizing behaviors, indicating shared genetic etiology (i.e., pleiotropy) across these complex childhood traits. At the phenotypic level, the frequency with which youth experienced insomnia symptoms was broadly associated with greater parent-reported psychiatric symptomatology across 20 subscales of mental health and was negatively associated with structural neuroimaging measures of whole-brain volume, mean cortical surface area, and regional surface area in frontal, parietal and temporal cortices. Notably, despite these phenotypic associations, we did not observe genetic correlations between childhood insomnia and brain size, suggesting distinct genetic mechanisms. Further, PRS trained using weights from adult GWAS of brain size did not predict childhood insomnia symptoms. Rather, insomnia could be predicted by PRS for ADHD, even when controlling for brain structure. Together, our results show that childhood insomnia is not mediated by reduced brain size, which rather appears to reflect the pleiotropic effects of shared ADHD genetic risk. These findings highlight a model of shared polygenic mechanisms underlying sleep quality and externalizing traits in childhood and suggest that childhood insomnia should be classified along the dimensional axis of ADHD/externalizing disorders.

One mechanism through which sleep may affect trajectories of brain development is through alterations of normative developmental processes, including synaptic pruning. Age-related decreases in cortical thickness, surface area, and volume occur throughout childhood and adolescence,^{14,15} which are thought to be driven by ongoing synaptic pruning³⁷ and consequent changes to brain area and gyrification.³⁸ In mice, chronic sleep deprivation has been associated with upregulation of astrocytic phagocytosis and microglial activation, resulting in enhanced synaptic degradation.³⁹ Thus, long-term disturbances in sleep may promote prolonged microglial activation, making the brain more susceptible to other genetic and environmental insults.³⁹ Indeed, we found that poorer sleep – across multiple dimensions of sleep behavior – is consistently associated with higher levels of parent-endorsed psychiatric symptoms. Our multi-trait sleep analysis extends the finding of recent population-representative pediatric sleep studies, which have either narrowly focused on sleep duration (i.e., hours of sleep per night)^{19,20} or on a limited number of psychiatric traits,¹⁸ and suggest that behavioral interventions aimed at improving the full range of sleep issues experienced by youth may improve mental health across the clinical spectrum.

Neural regulation of sleep and wakefulness is governed by reciprocal communication between the brain stem, subcortical regions, and cortex.⁴⁰ In line with previous research findings

of reduced grey matter volume in sleep disturbed children⁴¹ and adults⁴², we find that childhood insomnia is associated with reduced surface area in the frontal cortex (among other cortical regions), a brain area encompassing the basal forebrain, which animal studies have shown contain GABAergic neural populations critical for wakefulness.^{43,44} Recent work has further demonstrated the relationship between brain size and sleep is mediated by psychiatric symptoms.^{18,19} Here, we refine this model through the addition of genetics, which provides a causal directional anchor. We find that it is ADHD/externalizing psychiatric symptoms and their genetic risk (in particular) that mediate the relationship between brain size and sleep.

The SNP-based heritability of childhood insomnia was moderate ($h^2_{\text{SNP}}=0.15$) in the current pediatric sample, similar to estimates previously reported in adults ($h^2_{\text{SNP}}=0.07-0.17$).^{7,45} We also observed similar estimates of heritability for childhood cognition ($h^2_{\text{SNP}}=0.29-0.36$) and brain size (cortical thickness, cortical surface area, brain volume; $h^2_{\text{SNP}}=0.27-0.37$) as those documented in large-scale genomics studies of adult educational attainment ($h^2_{\text{SNP}}=0.22$)⁴⁶ and brain structure ($h^2_{\text{SNP}}\sim 0.26-0.34$).^{21,47} In adults, common genetic variants affecting sleep, brain size, and mental health show high genetic correlations, suggestive of substantial pleiotropy.^{7,21,45} To test whether the heritable polygenic contributions to childhood sleep quality also affect childhood brain size, we generated bivariate genetic correlations between sleep-brain-psychiatric traits in our 9-10-year-old sample. Surprisingly, and in contrast to the adult literature, genetic correlations between childhood insomnia and brain size (cortical thickness, surface area, volume) did not support the existence of genetic pleiotropy.

To further validate these null results, we used SNP-weights derived from large-scale GWAS of adult insomnia and cortical surface area to generate individual-level PRS's in the ABCD sample. Mirroring our null genetic correlations, PRS for brain surface area did not predict childhood insomnia. Instead PRS for ADHD was a significant predictor of *both* insomnia (at both 9-10-years of age and at the 1-year follow-up) and surface area in the frontal cortex and insula, which is consistent with recent studies showing genetic associations between ADHD, narcolepsy,⁴⁸ and sleep disturbances more broadly.⁴⁹ Our findings of positive genetic correlations between childhood sleep disturbance and ADHD are also in agreement with previous research documenting behavioral comorbidity^{50,51} and overlapping affected neural systems.¹⁸ We hypothesize that the genetic relationship between ADHD and childhood insomnia induces a phenotypic correlation between childhood insomnia and brain size; that is to say, as ADHD was pleiotropically associated with reduced brain surface area *and* insomnia symptoms, we hypothesize that this genetic relationship induces a phenotypic correlation between insomnia and brain size. Altogether, these data indicate that despite similar heritability estimates, childhood and

adult insomnia show distinct genetic correlations with other brain and behavioral traits and suggest that different genetic mechanisms may underlie the relationship between childhood sleep/neurodevelopmental vs. adult sleep/adult-onset psychiatric disorders. Ultimately, however, multiple waves of longitudinal data will be required to fully elucidate the temporal relationship between sleep, brain size, and cognitive/psychiatric symptoms throughout the lifespan.

In sum, using publicly available data from a socio-demographically diverse sample of youth, we sought to elucidate the phenotypic and genetic associations between sleep, mental health, and brain structure. Overall, these data indicate that childhood insomnia is genetically rooted in polygenic risk for ADHD and that the link between genetic risk for sleep disturbance, sleep behavior, and psychiatric symptoms may change across the lifespan, underscoring the importance of further elucidating the relationship between sleep-related genes, brain, and behavior in developmental populations. As sleep is crucial for optimal cognition and mental health, a better understanding of the genetic and neural underpinnings of sleep disturbances in children is essential to further our understanding the relationship between sleep and brain development, informing public policy surrounding guidelines for optimal sleep during childhood, and designing effective interventions aimed at improving cognitive and psychiatric outcomes in youth who experience sleep difficulties.

References

1. Besedovsky, L., Lange, T. & Haack, M. The sleep-immune crosstalk in health and disease. *Physiol. Rev.* **99**, 1325–1380 (2019).
2. Freeman, D. *et al.* The effects of improving sleep on mental health (OASIS): a randomised controlled trial with mediation analysis. *The Lancet Psychiatry* **4**, 749–758 (2017).
3. Dewald, J. F., Meijer, A. M., Oort, F. J., Kerkhof, G. A. & Bögels, S. M. The influence of sleep quality, sleep duration and sleepiness on school performance in children and adolescents: A meta-analytic review. *Sleep Medicine Reviews* vol. 14 179–189 (2010).
4. Meijer, A. M. Chronic sleep reduction, functioning at school and school achievement in preadolescents. *J. Sleep Res.* **17**, 395–405 (2008).
5. Wolfson, A. R. & Carskadon, M. A. *CLINICAL REVIEW Understanding adolescents' sleep patterns and school performance: a critical appraisal.* *Sleep Medicine Reviews* vol. 7 (2003).
6. Esbensen, A. J. & Schwichtenberg, A. J. Sleep in Neurodevelopmental Disorders. *Int. Rev. Res. Dev. Disabil.* **51**, 153–191 (2016).
7. Jansen, P. R. *et al.* Genome-wide analysis of insomnia in 1,331,010 individuals identifies new risk loci and functional pathways. *Nat. Genet.* **51**, 394–403 (2019).
8. Lane, J. M. *et al.* Genome-wide association analyses of sleep disturbance traits identify new loci and highlight shared genetics with neuropsychiatric and metabolic traits. *Nat. Genet.* **49**, 274–281 (2017).
9. Jones, S. E. *et al.* Genetic studies of accelerometer-based sleep measures yield new insights into human sleep behaviour. *Nat. Commun.* **10**, 1–12 (2019).
10. Dashti, H. S. *et al.* Genome-wide association study identifies genetic loci for self-reported habitual sleep duration supported by accelerometer-derived estimates. *Nat. Commun.* **10**, 1–12 (2019).
11. Calhoun, S. L., Fernandez-Mendoza, J., Vgontzas, A. N., Liao, D. & Bixler, E. O. Prevalence of insomnia symptoms in a general population sample of young children and preadolescents: Gender effects. *Sleep Med.* **15**, 91–95 (2014).
12. Owens, J. A., Spirito, A., McGuinn, M. & Nobile, C. Sleep habits and sleep disturbance in elementary school-aged children. *J. Dev. Behav. Pediatr.* **21**, 27–36 (2000).
13. Fricke-Oerckermann, L. *et al.* Prevalence and course of sleep problems in childhood. *Sleep* **30**, 1371–1377 (2007).
14. Tamnes, C. K. *et al.* Development of the Cerebral Cortex across Adolescence: A

- Multisample Study of Inter-Related Longitudinal Changes in Cortical Volume, Surface Area, and Thickness. *J. Neurosci.* **37**, 3402–3412 (2017).
15. Mills, K. L. *et al.* Structural brain development between childhood and adulthood: Convergence across four longitudinal samples. *Neuroimage* **141**, 273–281 (2016).
 16. Galván, A. The Need for Sleep in the Adolescent Brain. *Trends in Cognitive Sciences* vol. 24 79–89 (2020).
 17. Paus, T., Keshavan, M. & Giedd, J. N. Why do many psychiatric disorders emerge during adolescence? *Nat. Rev. Neurosci.* **9**, 947–957 (2008).
 18. Shen, C. *et al.* Archival Report What Is the Link Between Attention-Deficit/ Hyperactivity Disorder and Sleep Disturbance? A Multimodal Examination of Longitudinal Relationships and Brain Structure Using Large-Scale Population-Based Cohorts. (2020) doi:10.1016/j.biopsych.2020.03.010.
 19. Cheng, W. *et al.* Sleep duration, brain structure, and psychiatric and cognitive problems in children. *Mol. Psychiatry* 1–12 (2020) doi:10.1038/s41380-020-0663-2.
 20. Goldstone, A. *et al.* Sleep Disturbance Predicts Depression Symptoms in Early Adolescence: Initial Findings From the Adolescent Brain Cognitive Development Study. *J. Adolesc. Heal.* (2020) doi:10.1016/j.jadohealth.2019.12.005.
 21. Grasby, K. L. *et al.* The genetic architecture of the human cerebral cortex. *Science (80-.)*. **367**, (2020).
 22. Jernigan, T. L. & Brown, S. A. Introduction. *Dev. Cogn. Neurosci.* **32**, 1–3 (2018).
 23. BRUNI, O. *et al.* The Sleep Disturbance Scale for Children (SDSC) Construct ion and validation of an instrument to evaluate sleep disturbances in childhood and adolescence. *J. Sleep Res.* **5**, 251–261 (1996).
 24. Achenbach, T. & Rescorla, L. *Manual for the ASEBA school-age forms & profiles: an integrated system of mult-informant assessment.* (Burlington: University of Vermont, Research Center for Children, Youth & Families, 2001).
 25. Garavan, H. *et al.* Recruiting the ABCD sample: Design considerations and procedures. *Dev. Cogn. Neurosci.* **32**, 16–22 (2018).
 26. Weintraub, S. *et al.* Cognition assessment using the NIH Toolbox. *Neurology* **80**, (2013).
 27. Casey, B. J. *et al.* The Adolescent Brain Cognitive Development (ABCD) study: Imaging acquisition across 21 sites. *Dev. Cogn. Neurosci.* **32**, 43–54 (2018).
 28. Desikan, R. S. *et al.* An automated labeling system for subdividing the human cerebral cortex on MRI scans into gyral based regions of interest. *Neuroimage* **31**, 968–980 (2006).

29. Auton, A. *et al.* A global reference for human genetic variation. *Nature* vol. 526 68–74 (2015).
30. Purcell, S. *et al.* PLINK: A tool set for whole-genome association and population-based linkage analyses. *Am. J. Hum. Genet.* **81**, 559–575 (2007).
31. Yang, J., Lee, S. H., Goddard, M. E. & Visscher, P. M. GCTA: A tool for genome-wide complex trait analysis. *Am. J. Hum. Genet.* **88**, 76–82 (2011).
32. Lee, S. H. *et al.* Estimation of pleiotropy between complex diseases using single-nucleotide polymorphism-derived genomic relationships and restricted maximum likelihood. *Bioinforma. Appl.* **28**, 2540–2542 (2012).
33. Ge, T., Chen, C. Y., Ni, Y., Feng, Y. C. A. & Smoller, J. W. Polygenic prediction via Bayesian regression and continuous shrinkage priors. *Nat. Commun.* **10**, (2019).
34. Demontis, D. *et al.* Discovery of the first genome-wide significant risk loci for attention deficit/hyperactivity disorder. *Nat. Genet.* **51**, 63–75 (2019).
35. Das, S. *et al.* Next-generation genotype imputation service and methods. *Nat. Genet.* **48**, 1284–1287 (2016).
36. Klein, M. *et al.* Genetic markers of ADHD-related variations in intracranial volume. *Am. J. Psychiatry* **176**, 228–238 (2019).
37. Huttenlocher, P. R. & Dabholkar, A. S. Regional differences in synaptogenesis in human cerebral cortex. *J. Comp. Neurol.* **387**, 167–178 (1997).
38. Raznahan, A. *et al.* How does your cortex grow? *J. Neurosci.* **31**, 7174–7177 (2011).
39. Bellesi, M. *et al.* Sleep Loss Promotes Astrocytic Phagocytosis and Microglial Activation in Mouse Cerebral Cortex. *J. Neurosci.* **37**, 5263–5273 (2017).
40. Eban-Rothschild, A., Appelbaum, L. & De Lecea, L. Neuronal Mechanisms for Sleep/Wake Regulation and Modulatory Drive. *Neuropsychopharmacology* vol. 43 937–952 (2018).
41. Kocevskaja, D. *et al.* The developmental course of sleep disturbances across childhood relates to brain morphology at age 7: The generation r study. *Sleep* **40**, (2017).
42. Altena, E., Vrenken, H., Van Der Werf, Y. D., van den Heuvel, O. A. & Van Someren, E. J. W. Reduced Orbitofrontal and Parietal Gray Matter in Chronic Insomnia: A Voxel-Based Morphometric Study. *Biol. Psychiatry* **67**, 182–185 (2010).
43. Anaclet, C. *et al.* Basal forebrain control of wakefulness and cortical rhythms. *Nat. Commun.* **6**, 1–14 (2015).
44. Xu, M. *et al.* Basal forebrain circuit for sleep-wake control. *Nat. Neurosci.* **18**, 1641–1647 (2015).

45. Lane, J. M. *et al.* Biological and clinical insights from genetics of insomnia symptoms. *Nature Genetics* vol. 51 387–393 (2019).
46. Rietveld, C. A. *et al.* GWAS of 126,559 individuals identifies genetic variants associated with educational attainment. *Science (80-.)*. **340**, 1467–1471 (2013).
47. Zhao, B. *et al.* Heritability of Regional Brain Volumes in Large-Scale Neuroimaging and Genetic Studies. *Cereb. Cortex* **29**, 2904–2914 (2019).
48. Takahashi, N. *et al.* Polygenic risk score analysis revealed shared genetic background in attention deficit hyperactivity disorder and narcolepsy. *Transl. Psychiatry* **10**, 1–9 (2020).
49. Ohi, K. *et al.* Polygenic risk scores for major psychiatric and neurodevelopmental disorders contribute to sleep disturbance in childhood: Adolescent Brain Cognitive Development (ABCD) Study. *Transl. Psychiatry* **11**, 187 (2021).
50. Carpena, M. X. *et al.* The Role of Sleep Duration and Sleep Problems During Childhood in the Development of ADHD in Adolescence: Findings From a Population-Based Birth Cohort. *J. Atten. Disord.* **24**, 590–600 (2020).
51. Lunsford-Avery, J. R., Krystal, A. D. & Kollins, S. H. Sleep disturbances in adolescents with ADHD: A systematic review and framework for future research. *Clinical Psychology Review* vol. 50 159–174 (2016).