

## Supplementary Material

**Supplementary Table 1: A.** Primers and **B.** probes for RT-PCR testing performed at the BCCDC Public Health Laboratory and VGH

A. Primer Name	Sequence (5' → 3')	Target	Design
<b>BCCDC RdRP</b>			
BCCDC RdRP Fwd	TGCCGATAAGTATGTCCGCA	RNA-dependent RNA polymerase, SARS-CoV-2 specific	Tracy Lee, BCCDC
BCCDC RdRP Rev	CAGCATCGTCAGAGAGTATCATCATT		
<b>E-gene</b>			
E-gene_Fwd	ACAGGTACGTTAATAGTTAATAGCGT	Envelope protein, all SARS related viruses	Tracy Lee, BCCDC
E-gene_Rev	ATATTGCAGCAGTACGCACACA		
<b>RNAseP</b>			
RNAseP F	AGATTTGGACCTGCGAGCG	Human ribonuclease P	Tracy Lee, BCCDC
RNAseP R	GAGCGGCTGTCTCAACAAGT		

B. Probe Names	Sequence (5' → 3')
<b>RdRP gene</b>	
BCCDC RdRP probe	<b>FAM</b> /TTGACACAGACTTTGTGAATG/ <b>MGBNFQ</b>
<b>E-gene</b>	
E-gene _probe	<b>Cy5</b> /ACACTAGCC/ <b>TAO</b> /ATCCTTACTGCGCTTCG/ <b>IAbRQSp</b>
<b>RNAseP</b>	
RNAseP probe	<b>NED</b> /TCTGACCTGAAGGCTC/ <b>MGBNFQ</b>

Mixed bases: **Y** = C or T, **K** = G or T, **R** = A or G

**Supplementary Table 2: A. Primers, B. probes, and C. reaction conditions for Variant of Concern PCR testing**

<b>A. Primers</b>			
<b>Primer name</b>	<b>target</b>	<b>Sequence 5'-3'</b>	<b>Design</b>
N501Y_E484K-F1	E484K	AGAGAGATATTTCAACTGAAATCTATCAGG	Tracy Lee, BCCDC
N501Y-R3	E484K & N501Y	CCACAAACAGTTGCTGGTGC	Tracy Lee, BCCDC
N501Y-F2	N501Y	AATTGTTACTTTCTTTACAATCATATGG	Tracy Lee, BCCDC
WT_N501Y_block	N501Y	CCAAC+C+CA+C+T+A+A/3InvdT/	Tracy Lee, BCCDC
E_Sarbeco_F1	E-gene	ACAGGTACGTTAATAGTTAATAGCGT	Corman et al.
E_Sarbeco_R2	E gene	ATATTGCAGCAGTACGCACACA	Corman et al.

<b>B. Probes</b>			
<b>Target</b>	<b>Probe Dye</b>	<b>Sequence 5'-3'</b>	<b>Design</b>
E484K_MGB-P1 VIC	VIC-MGB	CTTGTAATGGTGTTAAAGGT	Tracy Lee
N501Y-P_FAM MGB	FAM-MGB	CCAACCCACTTATGG	Tracy Lee
E_Sarbeco_probe	CY5-TAO	ACACTAGCCATCCTTACTGCGCTTCG	Corman et al.

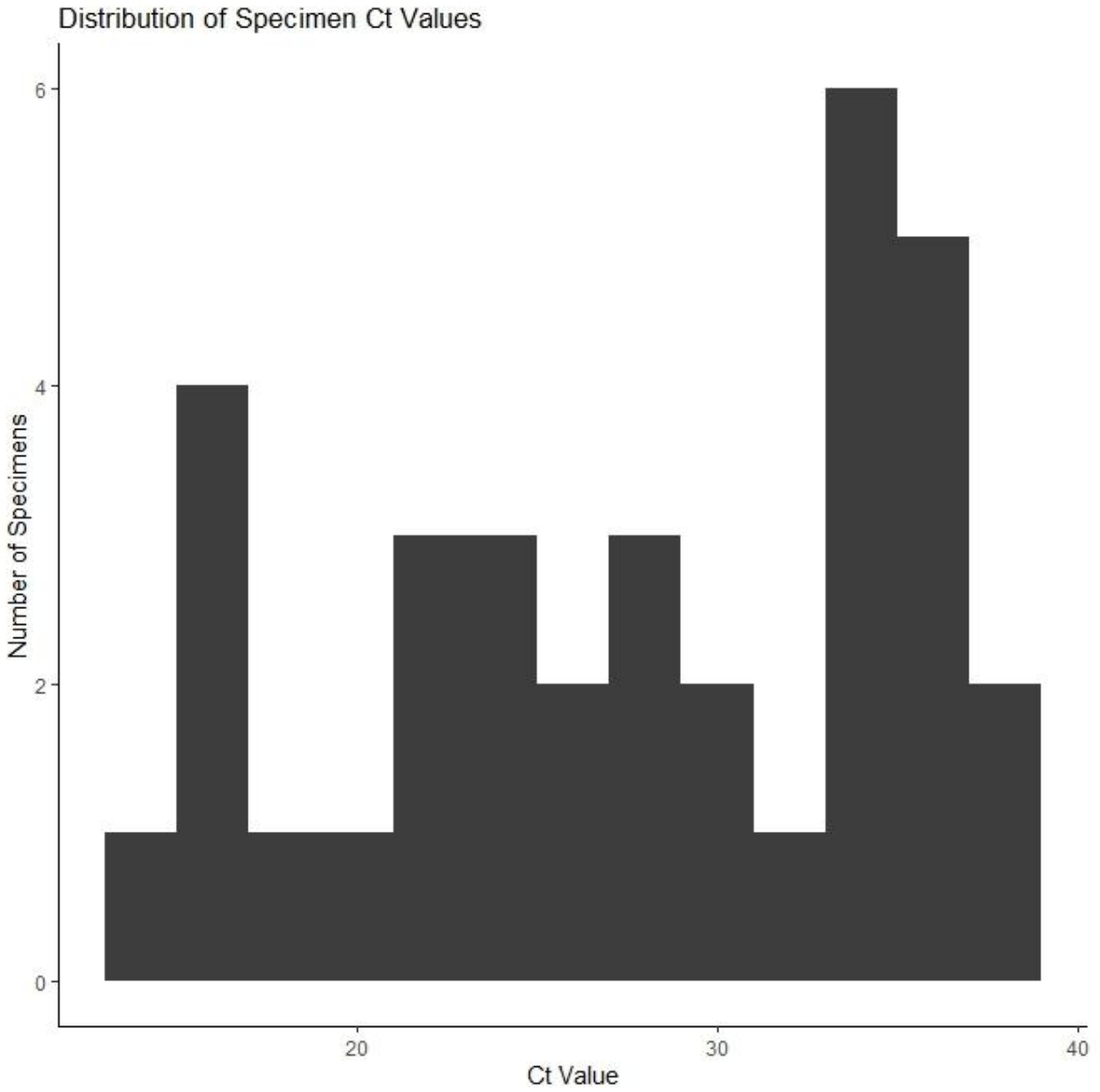
**C. Thermocycling program**

<b>Step</b>	<b>Cycles</b>	<b>Temperature</b>	<b>Time</b>
RT	1	50°C	5 minutes
Enzyme Activation	1	95°C	20 seconds
Amplification	40	95°C	3 seconds
		60°C	30 seconds

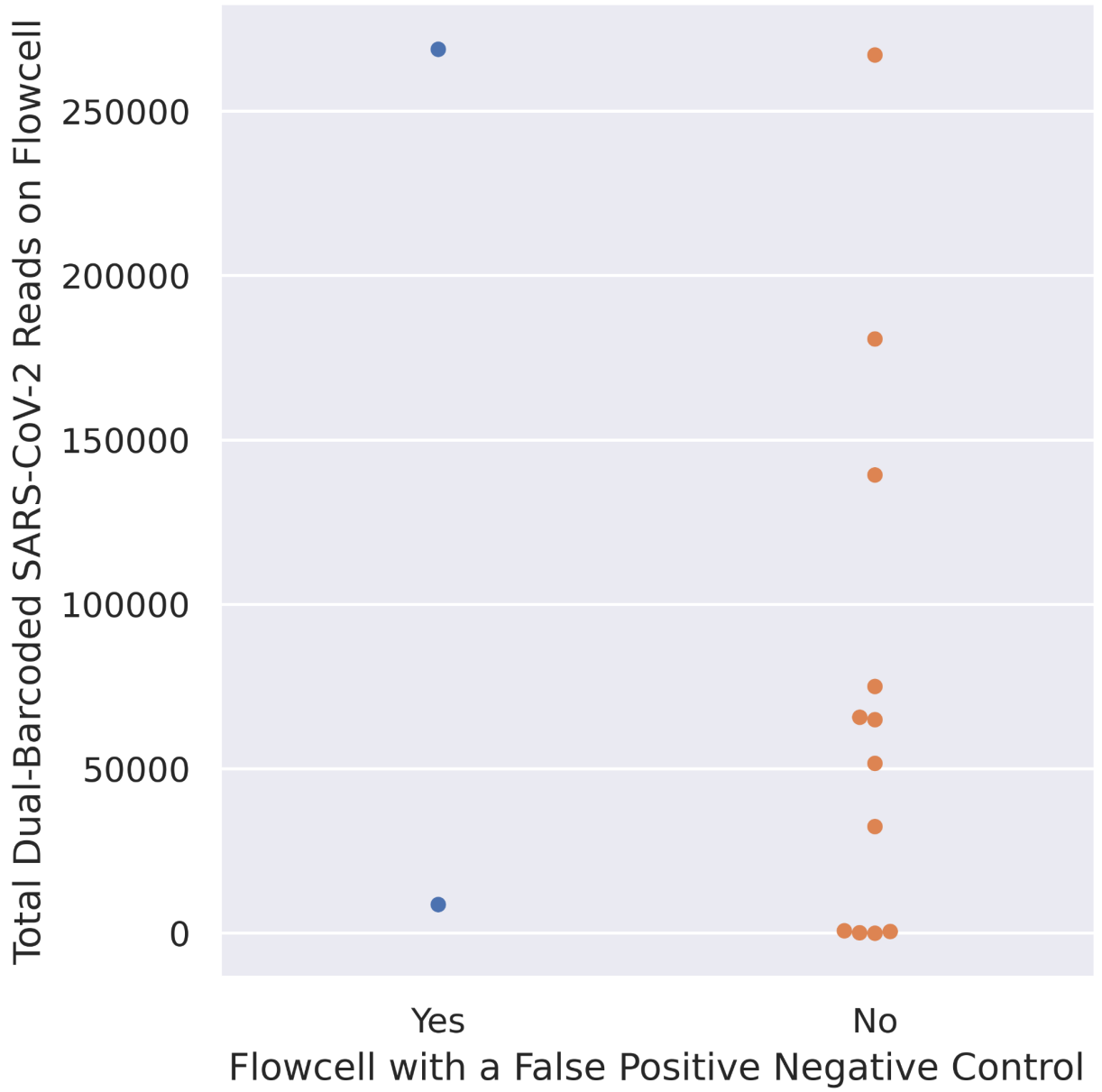
**Supplementary Table 3:** Detection of potential pathogens in study samples.

<b>Study ID</b>	<b>Bacterial Reads</b>	<b>Co-infection (% total bacterial/viral reads)</b>
P1	9,553	<i>Moraxella Catarrhalis</i> (7.4%)
P2	64,987	<i>Haemophilus influenzae</i> (2.8%)
P4	24,479	<i>Haemophilus parainfluenzae</i> (16.8%), <i>Neisseria meningitidis</i> (9.6%)
P7	3,896	<i>Haemophilus influenzae</i> (14.7%), <i>Haemophilus parainfluenzae</i> (6.9%)
P8	171,862	<i>Haemophilus parainfluenzae</i> (1.6%)
P9	3,132,744	<i>Haemophilus parainfluenzae</i> (1.1%)
P13	619,910	<i>Haemophilus parainfluenzae</i> (4.5%), <i>Streptococcus pneumoniae</i> (2.7%)
P14	481,963	<i>Moraxella catarrhalis</i> (31.6%)
P17	307,454	<i>Haemophilus parainfluenzae</i> (3.5%)
P22	2,121	<i>Neisseria meningitidis</i> (4.6%), <i>Klebsiella pneumoniae</i> (1.1%)
P27	2,862	<i>Klebsiella pneumoniae</i> (69.3%)
P36	829	<i>Staphylococcus aureus</i> (9.5%)
P38	7,376	<i>Staphylococcus aureus</i> (10.1%)
N1	1,192	<i>Staphylococcus aureus</i> (54.4%)
N5	55,465	<i>Streptococcus pneumoniae</i> (59.5%)

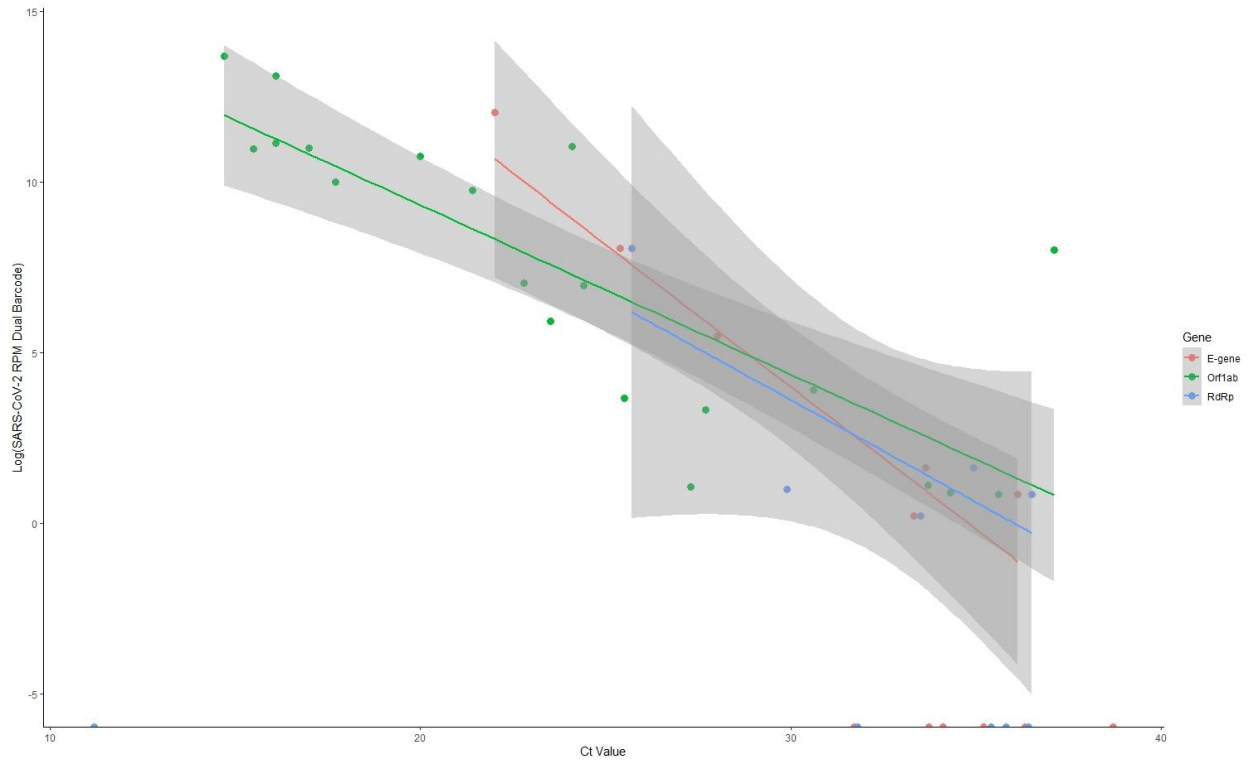
Only pathogens with greater than 1% relative abundance in samples with at least 1000 bacterial reads were included.



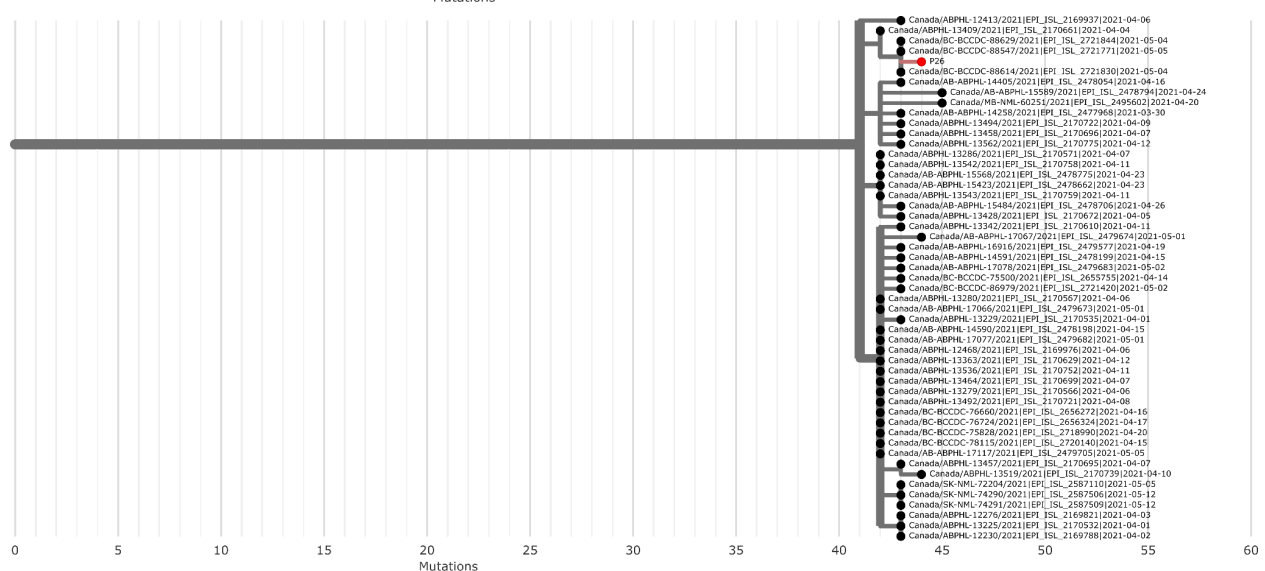
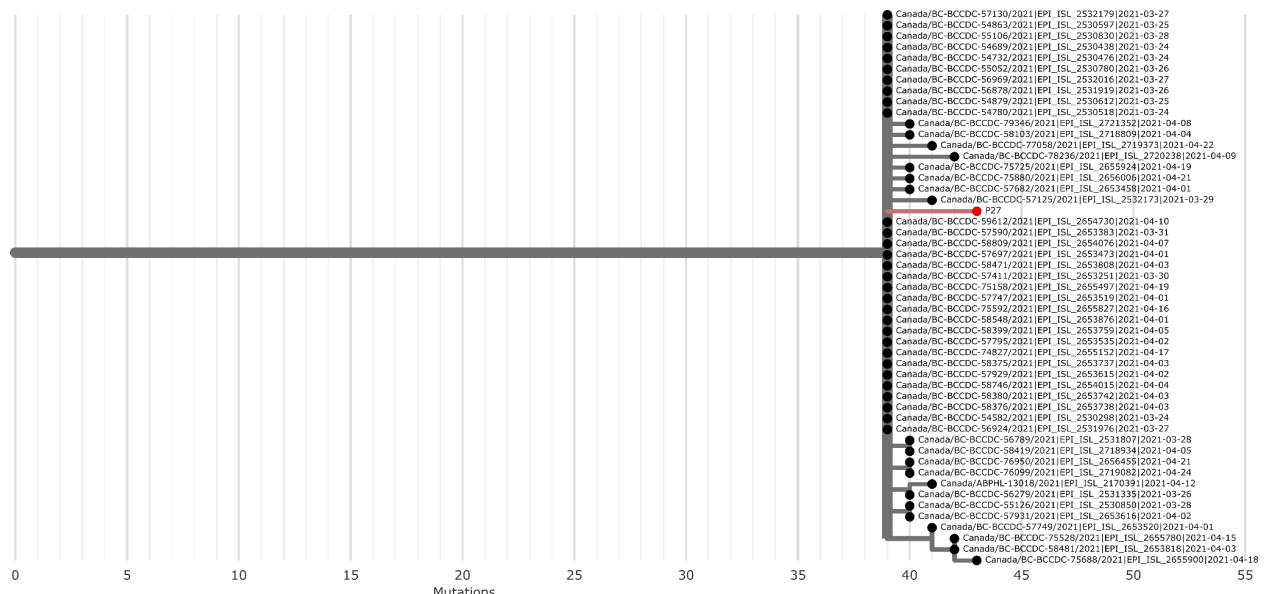
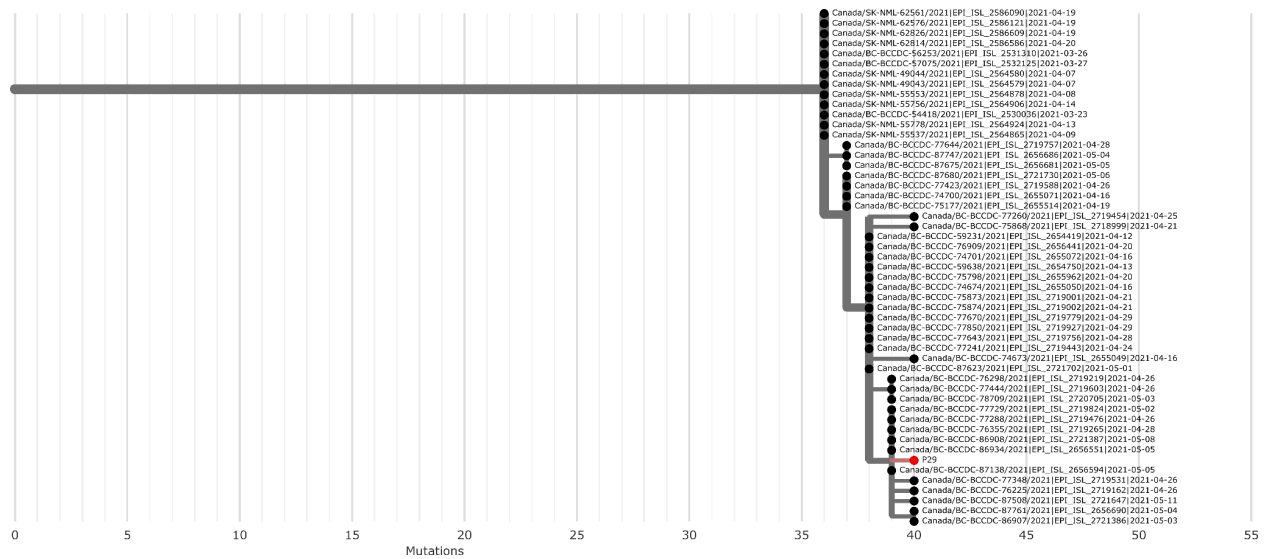
**Supplementary Figure 1:** Distribution of SARS-CoV-2 RT-qPCR positive study samples across  $C_t$  values

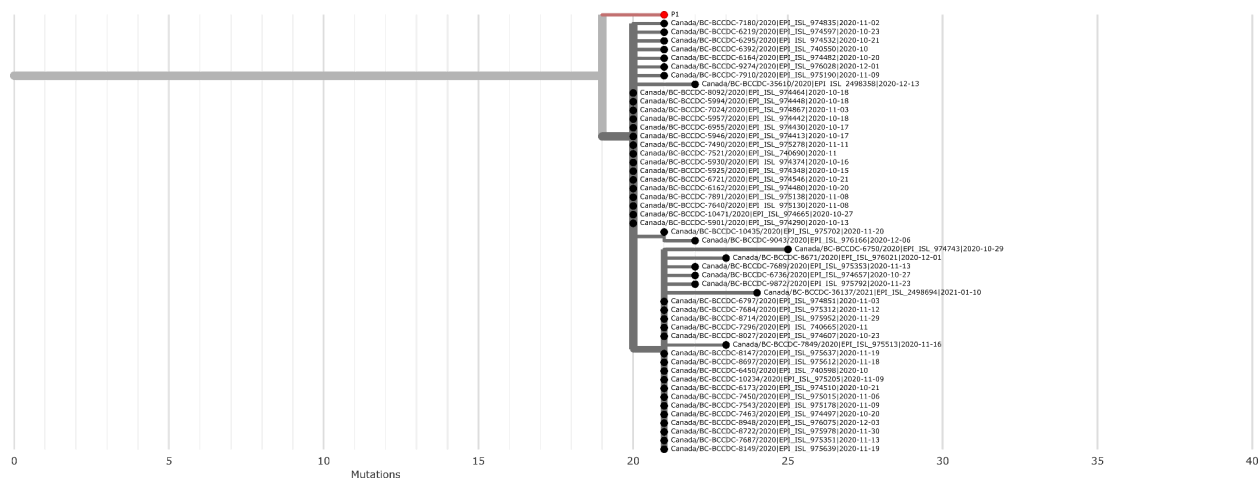
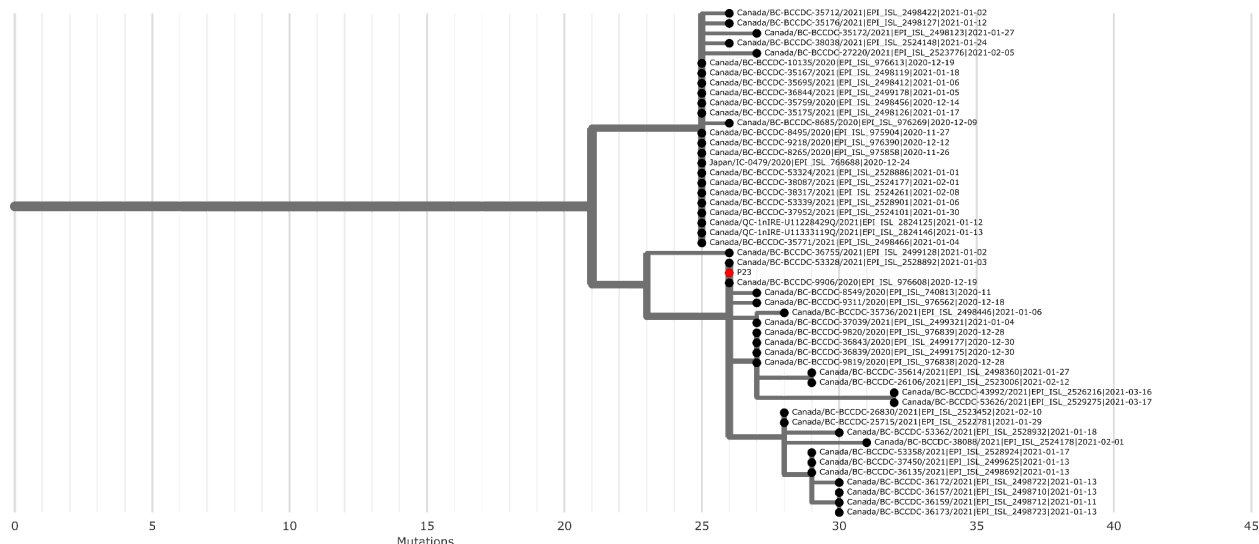
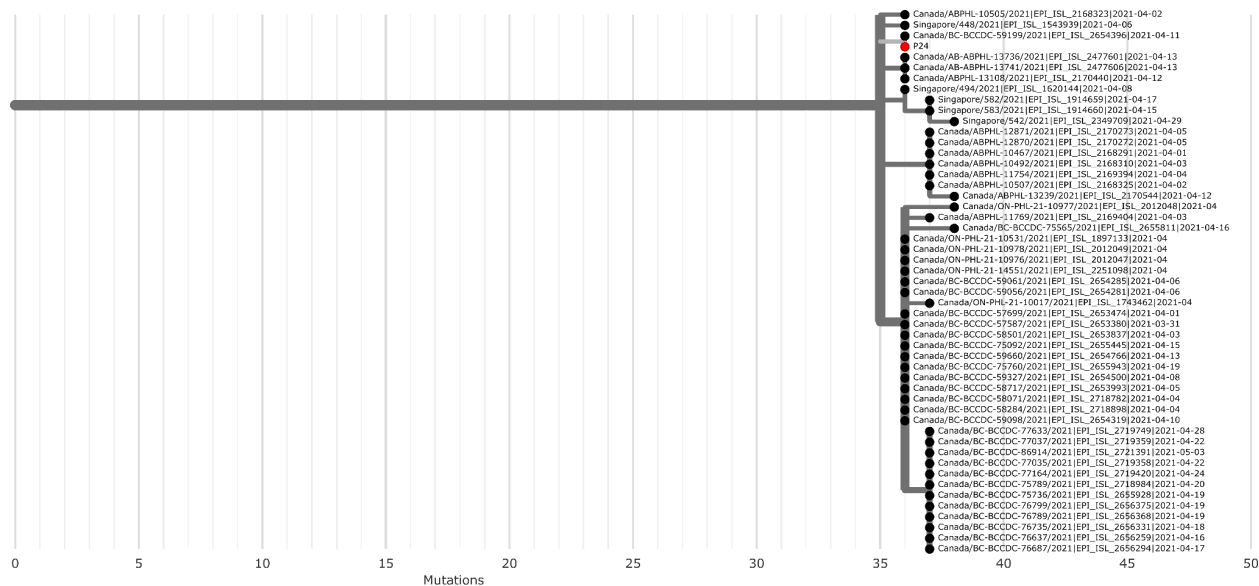


**Supplementary Figure 2:** Comparison of the total number of SARS-CoV-2 reads across all samples on a flowcell, stratified by flowcells with and without a false-positive negative control.

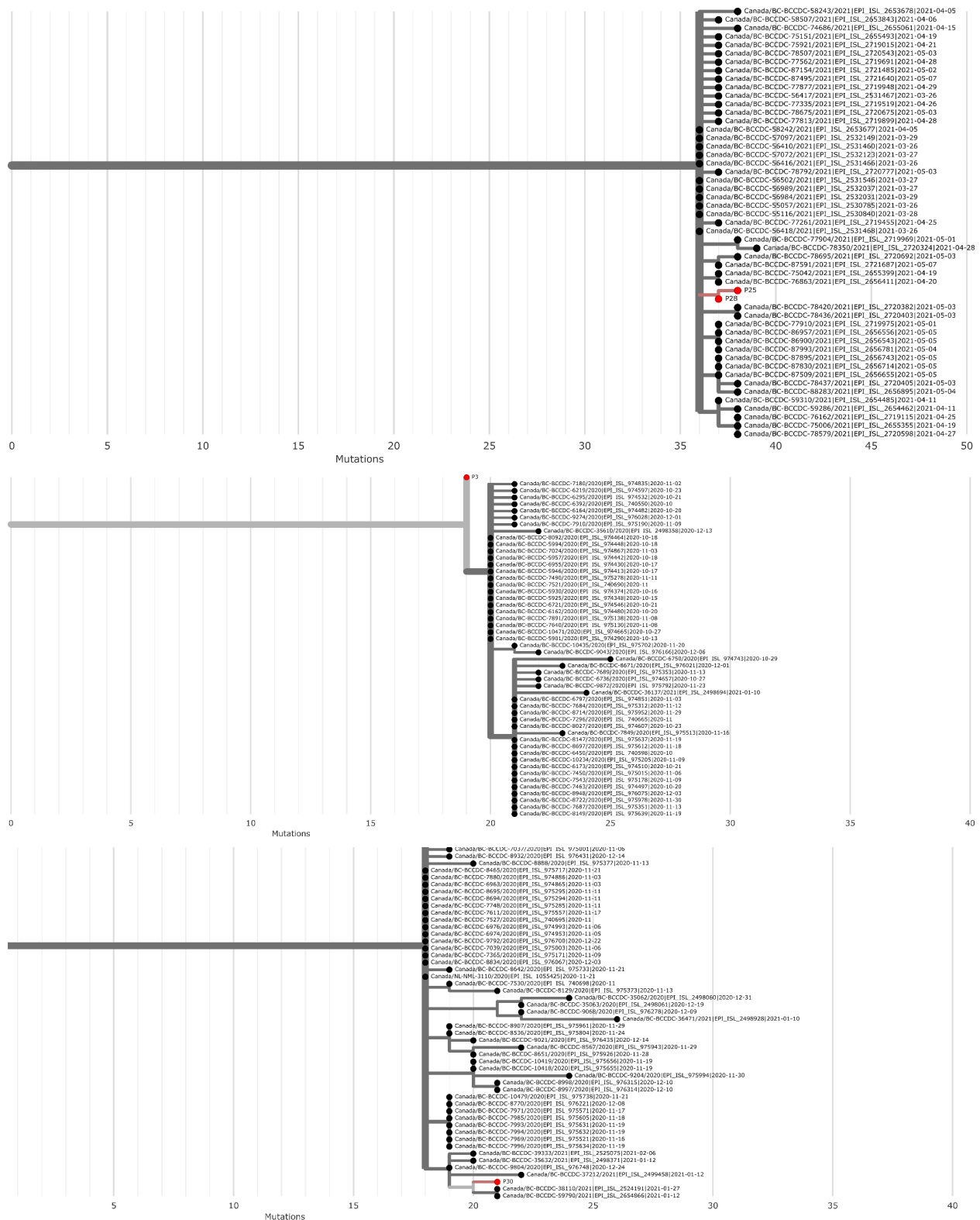


**Supplementary Figure 3:** Scatterplot of Log(SARS-CoV-2 RPM) against  $C_t$  value stratified by E-gene, ORF1ab, or RdRp.









**Supplementary Figure 4:** Phylogenetic Subtrees of Study Samples Compared with 2,447,008 publicly available SARS-CoV-2 genomes. Study samples are marked in red, publicly available genomes are black.

**Supplementary Data:** Representative visualization file for BugSeq metagenomic classification results produced by Recentrifuge