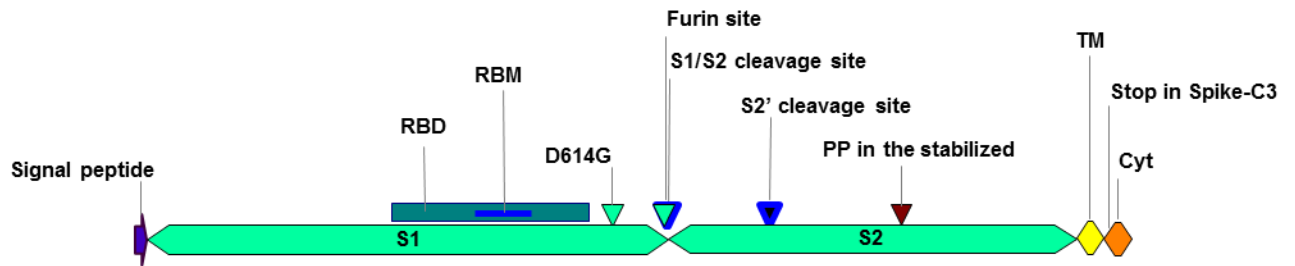
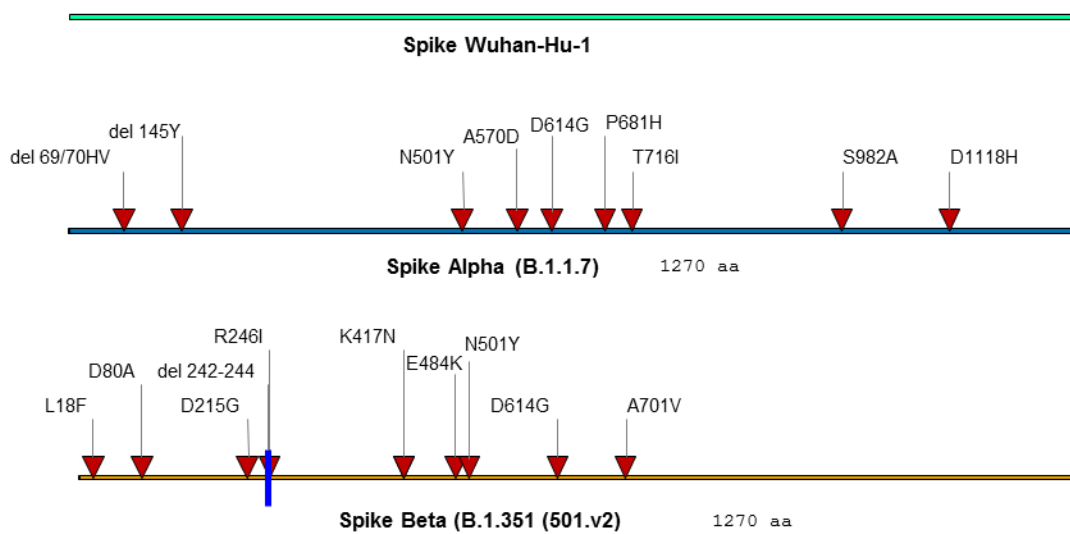


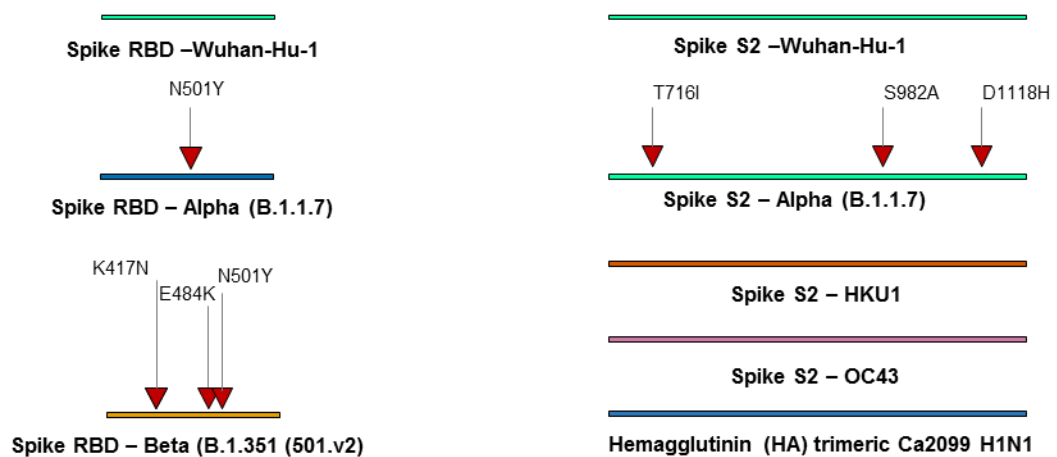
Supplemental figure 1



Nab assay antigens

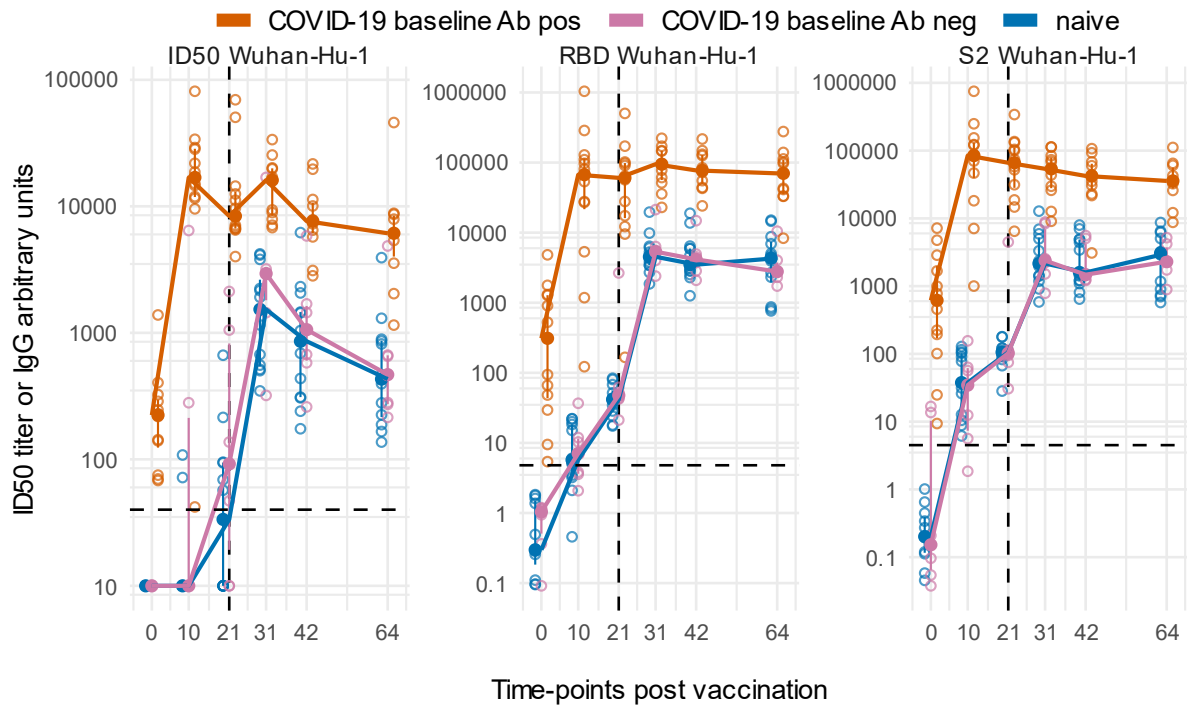


LIPS antigens



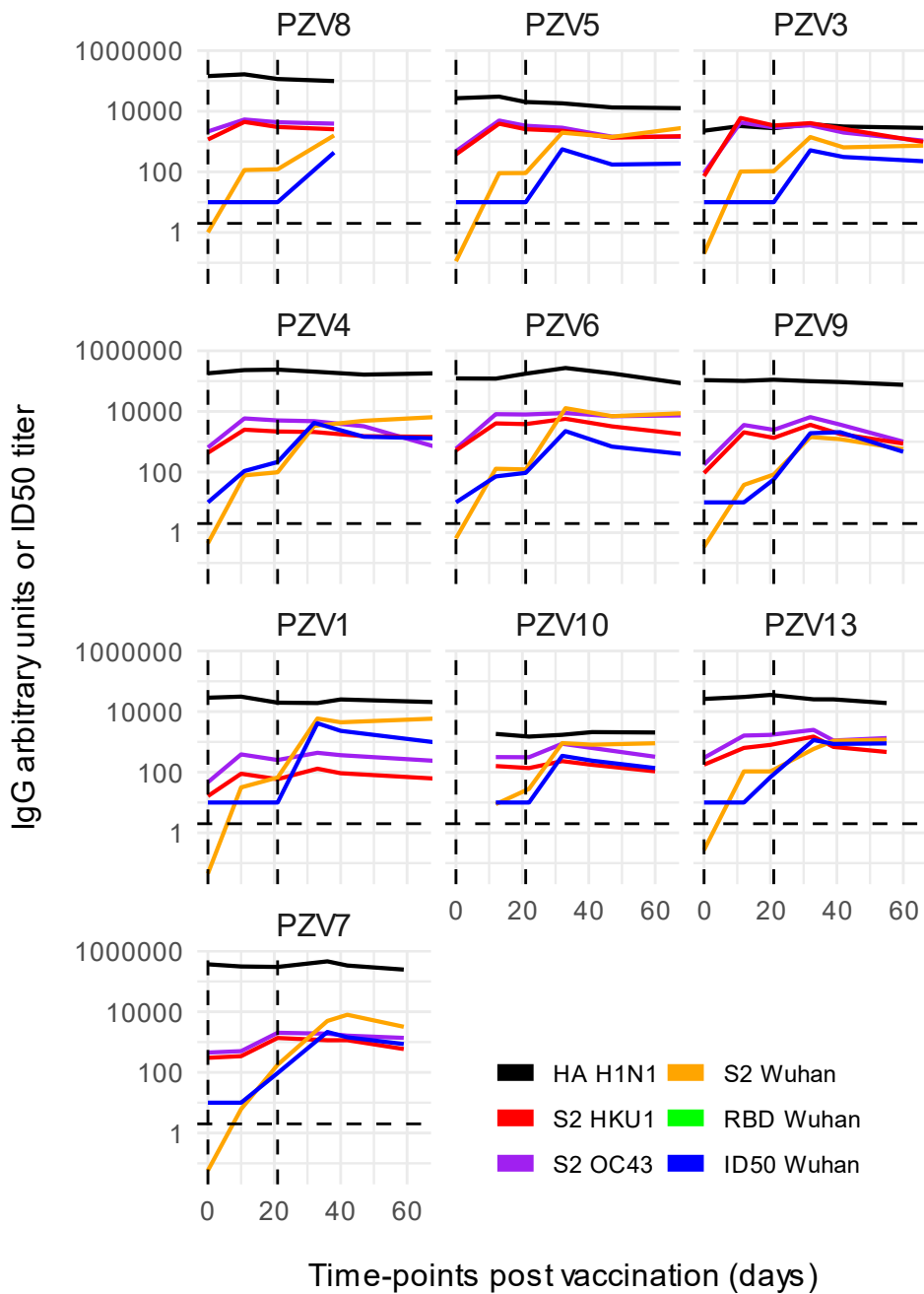
Schematic representation of SARS-CoV-2 constructs used in Nabs and LIPS assays

Supplemental figure 2



Antibody responses against Wuhan in BNT162b2 vaccinees stratified by SRAS-CoV-2 Ab status at baseline Line plots show the temporal profile post BNT162b2 vaccination of ID50 titers or IgG arbitrary units against the Spike RBD or S2 domains. Vaccinees are stratified according to previous infection with SARS-CoV-2 into naive or with previous COVID-19 either without or with SARS-CoV-2 neutralizing and RBD antibodies at baseline before vaccination (COVID-19 baseline Ab neg or COVID-19 baseline Ab pos, respectively). Filled circles with error bars correspond to median \pm IQR at the indicated timepoints. Empty circles correspond to individual subject values. Horizontal dashed lines indicate the respective assay threshold for positivity. The vertical dashed line indicates the second vaccine jab timepoint.

Supplemental figure 3



The antibody response to the pandemic H1N1 flu virus HA antigen is not affected by vaccination. The line plots show the temporal profile post BNT162b2 vaccination of antibody levels in binding or neutralization assays in a selection of SARS-CoV-2 naïve BNT162b2 vaccinees. HA antibodies show modest fluctuation over time that are not synchronous with those against betacoronaviruses' antigens. The dashed line indicates the second BNT162b2 jab timepoints.

Supplemental Table 1. Demographics and clinical characteristics of study subjects

Subject ID	Sex	Age at vaccination (years)	N. of vaccine shots	COVID-19	Symptoms category at first COVID-19	Symptoms category at second COVID-19	Days from symptoms onset to first vaccination (range)	SARS-CoV-2 alpha nAbs and RBD IgG at baseline
PZV1	F	56-60	2	Naïve				No
PZV2	M	61-65	2	Naïve				No
PZV3	F	26-30	2	Naïve				No
PZV4	F	26-30	2	Naïve				No
PZV5	M	31-35	2	Naïve				No
PZV6	M	31-35	2	Naïve				No
PZV7	F	56-60	2	Naïve				No
PZV8	F	56-60	2	Naïve				No
PZV9	F	36-40	2	Naïve				No
PZV10	F	41-45	2	Naïve				No
PZV11	M	31-35	2	Naïve				No
PZV12	F	46-50	2	Naïve				No
PZV13	M	36-40	2	Naïve				No
PZV14	F	26-30	2	First wave	asymptomatic		unknown	Yes
PZV15	F	56-60	1	First wave	moderate		350-400	Yes
PZV16	F	46-50	1	First wave	mild		250-300	Yes
PZV17	F	41-45	2	First wave	mild		300-350	Yes
PZV18	F	51-55	2	First wave	mild		250-300	Yes
PZV19	F	51-55	2	First wave	asymptomatic		300-350	No
PZV20	M	31-35	2	First wave	mild		300-350	Yes
PZV21	F	66-70	2	First wave	mild		300-350	No
PZV22	F	56-60	2	First wave	mild		300-350	Yes
PZV23	F	46-50	2	First wave	asymptomatic		>250	No
PZV24	F	51-55	2	First wave – Second wave	moderate		300-350	Yes
PZV25	F	46-50	2	First wave – Second wave	mild		250-300	Yes
PZV26	M	31-35	2	First wave – Second wave	asymptomatic		>200	No
PZV27	F	46-50	2	Second wave - 2020	mild		50-100	Yes
PZV28	F	51-55	2	Second wave	asymptomatic		50-100	No
PZV29	F	26-30	2	Second wave	mild		50-100	No
PZV30	M	61-65	2	Second wave	mild		50-100	Yes
PZV31	F	31-35	2	Second wave	mild		50-100	Yes

Supplemental Table 2. Peak values of SARS-CoV-2 antibodies post vaccination

		Geometric mean at day 31 post vax		Geometric mean ratio
		HCW with prior COVID-19 and detectable SARS-CoV-2 abs at baseline before vaccination	HCW without detectable SARS-CoV-2 abs at baseline before vaccination	HCW with baseline Abs / HCW without
Wuhan-Hu-1	ID50 titer	13613	1607	8.5
Wuhan-Hu-1	RBD IgG arbitrary units	84173	5162	16.3
Wuhan-Hu-1	S2 IgG arbitrary units	43733	2578	17.0