

## Supplementary Information

### **Mathematical modeling of vaccination rollout and NPIs lifting on COVID-19 transmission with VOC: a case study in Toronto, Canada**

Elena Aruffo<sup>1,2\*</sup>, Pei Yuan<sup>1,2\*</sup>, Yi Tan<sup>1,2,\*</sup>, Evgenia Gatov<sup>3</sup>, Iain Moyles<sup>1,2</sup>, Jacques Bélair<sup>1,5</sup>, James Watmough<sup>1,6</sup>, Sarah Collier<sup>3</sup>, Julien Arino<sup>1,4</sup>, Huaiping Zhu<sup>1,2</sup> †

<sup>1</sup> Centre for Diseases Modeling (CDM), York University, Toronto, Canada

<sup>2</sup> Department of Mathematics and Statistics, York University, Toronto, Canada

<sup>3</sup> Toronto Public Health, City of Toronto, Toronto, ON, Canada.

<sup>4</sup> Department of Mathematics, University of Manitoba, Winnipeg, Manitoba, Canada

<sup>5</sup> Département de Mathématiques et de Statistique, Université de Montréal, Montréal, Québec, Canada

<sup>6</sup> Department of Mathematics and Statistics, University of New Brunswick, Fredericton, New Brunswick, Canada

\* Co-first authors made the same contributions.

† Corresponding Author: [huaiping@yorku.ca](mailto:huaiping@yorku.ca),

4700 Keele Street, Toronto, Ontario, Canada, M3J1P3

## Model

The system of ODEs describing the dynamic is given by:

$$\begin{aligned}
S'_i &= -\lambda_{s_i} - \phi_i S_i \left\{ (1 - b(t)) \left[ \beta^0 \sum_j^5 c_{ij}(A_i + \xi I_{m_i}) \right] \right. \\
&\quad \left. - b(t) \left[ \beta^N \sum_j^5 c_{ij}(A_i + \xi I_{m_i}) \right] \right\} + \omega_1 V_{1i} + \omega_2 V_{2i} \\
E_i &= \phi_i S_i \left\{ (1 - b(t)) \left[ \beta^0 \sum_j^5 c_{ij}(A_i + \xi I_{m_i}) \right] - b(t) \left[ \beta^N \sum_j^5 c_{ij}(A_i + \xi I_{m_i}) \right] \right\} \\
&\quad + \phi_i V_{1i} (1 - \epsilon_{1i}) \left\{ (1 - b(t)) \left[ \beta^0 \sum_j^5 c_{ij}(A_i + \xi I_{m_i}) \right] \right. \\
&\quad \left. - b(t) \left[ \beta^N \sum_j^5 c_{ij}(A_i + \xi I_{m_i}) \right] \right\} - (1 - b(t)) \alpha^0 E_i - b(t) \alpha^N E_i \\
A'_i &= (1 - \rho)(1 - b(t)) \alpha^0 E_i + (1 - \rho) b(t) \alpha^N E_i - (1 - b(t)) \gamma_{aR_i}^0 A_i \\
&\quad - b(t) \gamma_{aR_i}^N A_i \\
I'_{m_i} &= \rho(1 - b(t)) \alpha^0 E_i + \rho b(t) \alpha^N E_i - (1 - b(t)) \gamma_{H_i}^0 I_{m_i} - b(t) \gamma_{H_i}^N I_{m_i} \\
&\quad - (1 - b(t)) \gamma_{mR_i}^0 I_{m_i} - b(t) \gamma_{mR_i}^N I_{m_i} \\
H'_i &= (1 - b(t)) \gamma_{H_i}^0 I_{m_i} + b(t) \gamma_{H_i}^N I_{m_i} - (1 - b(t)) \mu_{H_i}^0 H_i - b(t) \mu_{H_i}^N H_i \\
&\quad - (1 - b(t)) \gamma_{HR_i}^0 H_i - b(t) \gamma_{HR_i}^N H_i \\
D'_i{}^0 &= (1 - b(t)) \mu_{H_i}^0 H_i + b(t) \mu_{H_i}^N H_i \\
R'_i &= (1 - b(t)) \gamma_{aR_i}^0 A_i + b(t) \gamma_{aR_i}^N A_i + (1 - b(t)) \gamma_{mR_i}^0 I_{m_i} + b(t) \gamma_{mR_i}^N I_{m_i} \\
&\quad + (1 - b(t)) \gamma_{HR_i}^0 H_i + b(t) \gamma_{HR_i}^N H_i \\
V_{1i} &= \lambda_{s_i} - \phi_i V_{1i} (1 - \epsilon_{1i}) \left\{ (1 - b(t)) \left[ \beta^0 \sum_j^5 c_{ij}(A_i + \xi I_{m_i}) \right] \right. \\
&\quad \left. - b(t) \left[ \beta^N \sum_j^5 c_{ij}(A_i + \xi I_{m_i}) \right] \right\} - \sigma \epsilon_{2i} V_{1i} - \omega_1 V_{1i} \\
V_{2i} &= \sigma \epsilon_{2i} V_{1i} - \omega_2 V_{2i}
\end{aligned}$$

Eq.S11

For  $i \in \{1,2,3,4,5,6\}$ , where  $\beta^N = \zeta \beta^0$ .

The list of variables and assumptions is given in Table S11.

**Table S11:** Table of the model's variables and assumptions

<b>Variable</b>	<b>Definition</b>
$S_i$	Susceptible individuals in age group $i$
$L_i$	Latently infected individuals in age group $i$
$A_i$	Asymptomatic individuals in age group $i$
$I_{mi}$	Symptomatic (mild) individuals in age group $i$
$H_i$	Hospitalized individuals in age group $i$
$D_i$	Deceased individuals in age group $i$
$R_i$	Recovered individuals in age group $i$
$V_{1i}$	Vaccinated individuals in age group $i$ (first dose)
$V_{2i}$	Vaccinated individuals in age group $i$ (second dose)
$i \in \{1,2,3,4,5,6\}$	Age groups: 0-9,10- 19, 20-39, 40-59, 60-79, 80+ years respectively
<b>Assumptions</b>	
1. Only susceptible individuals, aged 10 years and older, will receive the vaccine	
2. Immunity follows two steps: partial (receiving one dose) and full (receiving two doses)	
3. The vaccine efficacy is age dependent (higher for teenagers and adults, lower for elderly)	
4. The vaccine efficacy is the same against wildtype variant and VOC	
5. The second dose is given after 112 days (in some predictive scenarios after 50 or 21 days), following the suggestion announced by the Government of Ontario in March 2021 [33]	
6. Immunity wanes from one dose of vaccine after 120 days and from two doses after 365 days	
7. We assume that the coverages in Table 2 are reached by June 14, 2021, and continue the vaccination process until 80% of the total population is vaccinated	
8. We assume that all non-wild type cases belong to B.1.1.7	
9. VOC and wildtype are both included in the transmission process, assuming that proportion of cases from VOC increases by time, following a sigmoidal function	
10. The transmission from VOC is assumed to be 1.5 higher than the original variant	
11. Vaccine reduces susceptibility. Partially vaccinated people can become infected and infectious if the vaccine is not efficient	
12. Only individuals hospitalized might die from the infection	

**Table SI2:** Table of model parameters

Parameter	Definition	Value	Ref.
$\lambda_{s_i}$	Average daily vaccine doses given at age group i	daily doses from data	[38]
$\phi_i$	Susceptibility for age group i	0.34 0.34 1 1 1.67 1.67	[39]
$c_{ij}$	Contacts per day		[32]
	Reduction	0.650043	Phase I
		0.759924	Phase II
		0.665048	Phase III
	0.77	Phase IV	
$\beta$	Probability of transmission	2.30E-07	Estimated
$\zeta$	Increase in transmission from VOC	1.5	Assumed [17,18,19,20]
$\xi$	Proportion of mild cases not adhering to self-isolation rule	0.20002	Estimated
$\alpha^{O,N}$	average time in latent period	1/4 days <sup>-1</sup>	[40,41] (assumed for VOC)
$\rho$	Proportion of symptomatic individuals	0.8	[42]
$\gamma_{aR_i}^{O,N}$	Recovery rate from asymptomatic infection	0.16 days <sup>-1</sup>	[43]
$\gamma_{H_i}^O$	Hospitalization rate of individuals in group I, infected with old variant	0.0029 0.0005 0.0027 0.0108 0.0458	Phase I
		0.0024 0.0020 0.0047 0.0113 0.0475	Phase II
		0.0018 0.0015 0.0052 0.0156 0.0558	Phase III
		0.0014 0.0005 0.0034 0.0101 0.0327	Phase IV
$\gamma_{H_i}^N$		0 0 0 0 0.2550 0.1133	Phase I

	Hospitalization rate of individuals in group I, infected with VOC	0.0027 0.0019 0.0066 0.0179 0.0911	0.0019 0.0014 0.0070 0.0247 0.0708	0.0066 0.0070 0.0057 0.0121 0.0426	0.0179 0.0247 0.0121 0.0426 0.0911	0.0911	Phase II Phase III Phase IV	<b>Estimated</b>	
$\gamma_{mR_i}^o$	Recovery rate of individuals in group I, mildly infected with old variant	0.0991 0.0998 0.0992 0.0968 0.0865	0.0998 0.0994 0.0986 0.0967 0.0860	0.0992 0.0986 0.0985 0.0955 0.0840	0.0968 0.0967 0.0955 0.0840 0.0865	0.0865	Phase I Phase II Phase III Phase IV	<b>Calculated</b>	
$\gamma_{mR_i}^N$	Recovery rate of individuals in group I, mildly infected with VOC	0.1000 0.1000 0.1000 0.1000 0.0250	0.1000 0.0994 0.0981 0.0947 0.0732	0.1000 0.0981 0.0980 0.0929 0.0798	0.1000 0.0947 0.0929 0.0798 0.0732	0.0250	Phase I Phase II Phase III Phase IV	<b>Calculated</b>	
$\mu_{H_i}^o$	Mortality rate from old variant	0 0 0 0	0 0 0 0	0.0001 0.0013 0.0143 0.0834	0.0013 0.0124 0.0522 0.0407	0.0834	Phase I Phase II Phase III Phase IV	<b>Estimated</b>	
$\mu_{H_i}^N$	Mortality rate from VOC	0 0 0 0	0 0 0 0	0 0 0 0	0.1100 0 0.1336 0.0600	0	Phase I Phase II Phase III Phase IV	<b>Estimated</b>	
$\gamma_{HR_i}^o$	Recovery rate of hospitalized individuals in group I, mildly infected with old variant	0.1200 0.1200 0.1200 0.1196 0.1161	0.1200 0.1200 0.1200 0.1196 0.1161	0.1200 0.1800 0.1800 0.1798 0.1796 0.1764	0.1196 0.1794 0.1736 0.1764	0.1161	Phase I Phase II Phase III Phase IV	<b>Estimated</b>	
$\gamma_{HR_i}^N$	Recovery rate of hospitalized individuals in group I, mildly infected with VOC	0.1200 0.1200 0.1200 0.1200 0.0900	0.1200 0.1800 0.1800 0.1798 0.1791 0.1678	0.1200 0.1798 0.1799 0.1795 0.1756	0.1200 0.1678 0.1756	0.0900	Phase I Phase II Phase III Phase IV	<b>Estimated</b>	
$\epsilon_{1_i}$	Efficacy first dose for age group i	0 0.8 0.8 0.8 0.7 0.7					reduced by 0.1 in lower efficacy scenario		<b>Assumed [44]</b>
$\epsilon_{2_i}$	Efficacy second dose for age group i	0 0.9 0.9 0.9 0.8 0.8					reduced by 0.1 in lower efficacy scenario		<b>Assumed [44]</b>

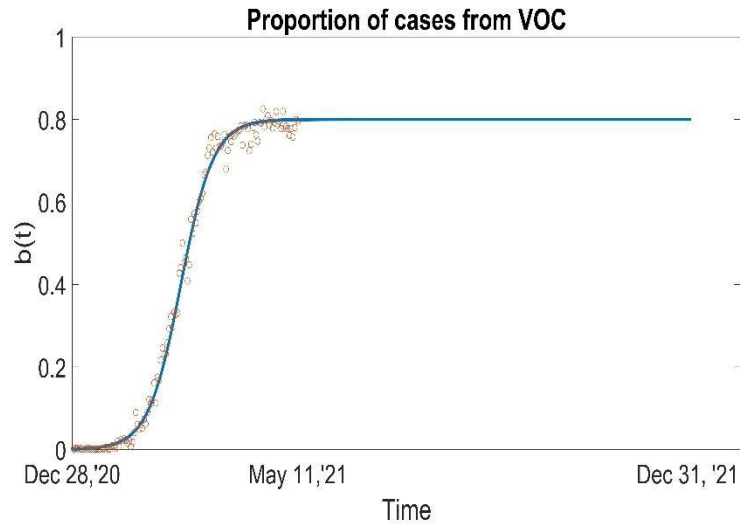
$\sigma$	Average time to receive second dose	1/112 days <sup>-1</sup>	[33]														
$\omega_1$	Average time to wane immunity after first dose	1/120 days <sup>-1</sup>	Assumed														
$\omega_2$	Average time to wane immunity after second dose	1/365 days <sup>-1</sup>	Assumed														
$S_{0i}$	Susceptible individuals in age group I (initial value)	283648    280541    901570    832208    546916    150982	Calculated														
$E_{0i}$	Exposed individuals in age group I (initial value)	<table border="1"> <tr> <td>Old</td> <td>158</td> <td>301</td> <td>1528</td> <td>1169</td> <td>553</td> <td>264</td> </tr> <tr> <td>VOC</td> <td>0</td> <td>0</td> <td>1</td> <td>2</td> <td>2</td> <td>1</td> </tr> </table>	Old	158	301	1528	1169	553	264	VOC	0	0	1	2	2	1	Calculated
Old	158	301	1528	1169	553	264											
VOC	0	0	1	2	2	1											
$A_{0i}$	Asymptomatic individuals in age group I (initial value)	<table border="1"> <tr> <td>Old</td> <td>46</td> <td>78</td> <td>340</td> <td>300</td> <td>152</td> <td>61</td> </tr> <tr> <td>VOC</td> <td>0</td> <td>0</td> <td>0</td> <td>0</td> <td>0</td> <td>1</td> </tr> </table>	Old	46	78	340	300	152	61	VOC	0	0	0	0	0	1	Calculated
Old	46	78	340	300	152	61											
VOC	0	0	0	0	0	1											
$I_{m0i}$	Symptomatic individuals in age group I (initial value)	<table border="1"> <tr> <td>Old</td> <td>340</td> <td>529</td> <td>2378</td> <td>1936</td> <td>877</td> <td>318</td> </tr> <tr> <td>VOC</td> <td>0</td> <td>0</td> <td>0</td> <td>0</td> <td>0</td> <td>0</td> </tr> </table>	Old	340	529	2378	1936	877	318	VOC	0	0	0	0	0	0	Calculated
Old	340	529	2378	1936	877	318											
VOC	0	0	0	0	0	0											
$H_{0i}$	Hospitalized individuals in age group I (initial value)	<table border="1"> <tr> <td>Old</td> <td>4</td> <td>4</td> <td>44</td> <td>121</td> <td>236</td> <td>208</td> </tr> <tr> <td>VOC</td> <td>0</td> <td>0</td> <td>0</td> <td>0</td> <td>0</td> <td>0</td> </tr> </table>	Old	4	4	44	121	236	208	VOC	0	0	0	0	0	0	Calculated
Old	4	4	44	121	236	208											
VOC	0	0	0	0	0	0											
$D_{0i}$	Deceased individuals in age group I (initial value)	<table border="1"> <tr> <td>Old</td> <td>1</td> <td>0</td> <td>4</td> <td>79</td> <td>527</td> <td>1351</td> </tr> <tr> <td>VOC</td> <td>0</td> <td>0</td> <td>0</td> <td>0</td> <td>0</td> <td>0</td> </tr> </table>	Old	1	0	4	79	527	1351	VOC	0	0	0	0	0	0	Calculated
Old	1	0	4	79	527	1351											
VOC	0	0	0	0	0	0											
$R_{0i}$	Recovered individuals in age group I (initial value)	Old 2735 4637 21635 17060 8010 3588 VOC 0 0 0 0 0	Calculated														

**SENSITIVITY ANALYSIS PARAMETERS**

PARAMETER	DEFINITION	RANGE (uniform distribution)
$\sigma$	Rate at which second dose is distributed	[1/112, 1/21]
$\lambda_2$	Daily doses age group 10-19	[500, 2719]
$\lambda_3$	Daily doses age group 20-39	[1624, 8559]
$\lambda_4$	Daily doses age group 40-59	[2312, 8714]
$\lambda_5$	Daily doses age group 60-79	[599, 2702]
$\lambda_6$	Daily doses age group 80+	[319, 900]

### Proportion of VOC cases

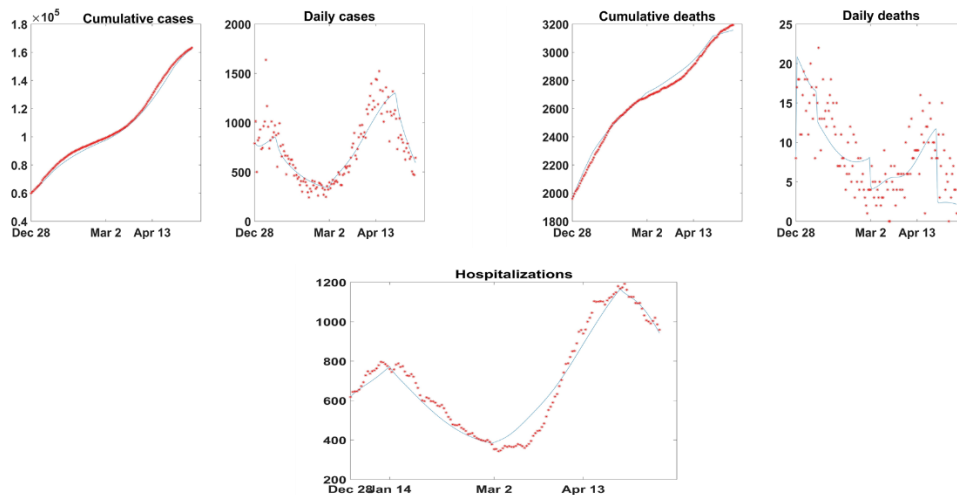
To capture the increasing trend of cases from VOC, we defined a time-dependent function ( $b(t)$ ) following a sigmoid function. Fig. A1 shows the proportion of cases from VOC from data (red circles) and the function used to reproduce their trend (blue curve). According to data up to May 19, 2021 the proportion of cases from VOC in Toronto reached a maximum of 0.8 by May 11, 2021. Hence, we consider 80% to be the maximum of cases generated by the new variant.



**Fig. SI1:** Sigmoidal function describing the growth of proportion of cases from VOC in Toronto. Scatter plot represents the proportion of VOC cases in Toronto from December 28, 2020 to May 11, 2021.

### Data fitting

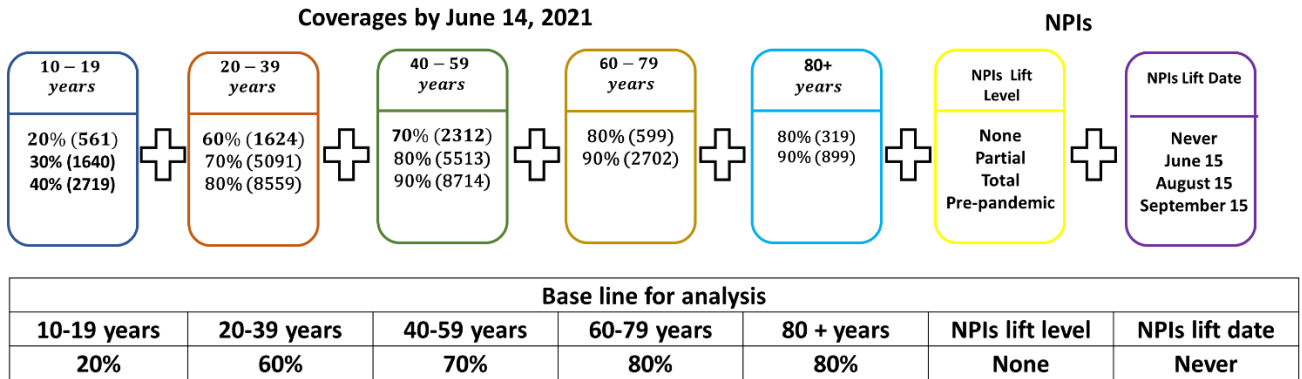
To calibrate the model's parameters, we employed the Least Squared Method (LSM) using cumulative and daily cases and deaths, and hospitalizations (Figure SI2)



**Figure SI2:** Parameters' calibration using Least Square Method. We used cumulative and daily cases and deaths, and hospitalizations between December 28, 2020 and May 19, 2021.

## Permutations of model's analysis

All the scenarios used for the projections are shown in Figure SI3. Each scenario is described by taking one element in each column.



**Figure SI3:** Outward-facing model coverages and base line for model's analysis. All these coverages are reached by June 14, 2021. In brackets, we report the daily doses. Each scenario is described by taking one element in each column.

## Contact matrix

We used the total contact matrix from a recent Canadian study [32]. However, the age groups used in this study were defined by a 5-year band from 0 to 80+. Our model is using larger age groups, then it was necessary to aggregate the original contact matrix in less groups.

Let's define  $P_j$  the population size of age group  $j \in \{1, 2, 3, \dots, 17\}$ , where  $1 = 0 - 4 \text{ years}$ ,  $2 = 5 - 9 \text{ years}$ , ...,  $17 = 80 + \text{ years}$ . To better approximate the contact rates, we calculated, from the original  $17 \times 17$  matrix  $(M_{ij})$ , the total contacts that an age group has with all the other age groups. To obtain this, we multiplied all the age groups by their own population size, i.e.  $m_{ij} \times P_j$ . Then, to aggregate some age groups, we averaged the total contacts as follows:

- For same ages belonging to new aggregation: we summed up the diagonal entries of the submatrix related to the age groups to aggregate and the average of the mixed contacts ( $\hat{c}_{ii} = \sum m_{ii} + \sum \frac{m_{ij} + m_{ji}}{2}$ ). For example, the new contact of the aggregated group 0-9, given by group 1 and 2, will be  $m_{11} + m_{22} + \frac{m_{12} + m_{21}}{2}$
- For different ages aggregation: we summed up the average of the mixed contacts ( $\hat{c}_{ij} = \sum \frac{m_{ij} + m_{ji}}{2}$ ). For example, the new contact of the aggregated group 0-9 and 10-19, given by group 1, 2, 3 and 4, will be  $\frac{m_{13} + m_{31}}{2} + \frac{m_{14} + m_{41}}{2} + \frac{m_{23} + m_{32}}{2} + \frac{m_{24} + m_{42}}{2}$

Once we reduced the total contacts into a smaller matrix, we re-parametrized each entry of the new age group dividing the obtained contacts by the population size of the aggregate age group (i.e.,  $c_{ij} = \hat{c}_{ij} / \sum P_j$ ). Table A2 represents the compacted matrix.



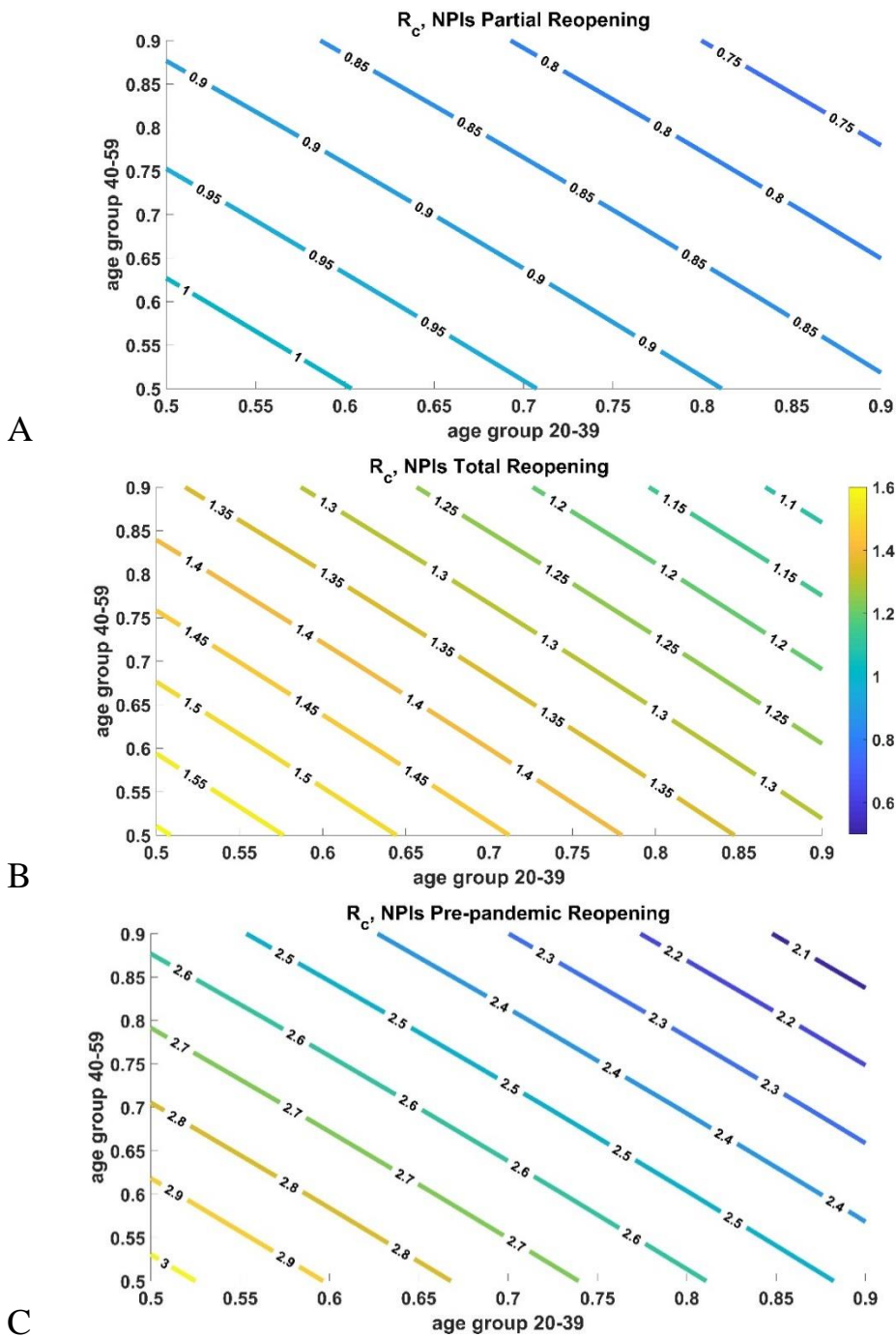
**Table SI3:** Contact matrix

		Age participants					
		0-9	10-19	20-39	40-59	60-79	80+
Age contacts	0-9	2.59	0.54	0.51	0.67	0.21	0.04
	10-19	0.56	3.13	0.66	0.86	0.21	0.10
	20-39	1.88	2.35	2.52	3.06	1.29	0.65
	40-59	1.88	2.33	2.33	2.10	1.50	1.10
	60-79	0.40	0.39	0.66	1.00	1.25	1.04
	80+	0.02	0.05	0.09	0.20	0.28	0.58

## RESULTS

### Reproduction number $R_c$

**Figure SI4:** Contour plots of  $R_c$  assuming that the following coverages reached for age groups 10-19, 60-79 and 80+ years are 20%, 80%, and 90%, respectively, when the NPIs level reopening is (A) partial, (B) total and (C) pre-pandemic. As expected, as the vaccination coverage increases, the values of the reproduction number decrease. Also, we observe that with the lowest reopening level, to reduce the reproduction number below 1, it is sufficient to vaccinate age groups 20-39 and 40-59 years above 60% and 62%, respectively. On the other hand, a relaxation of NPIs and increase in contacts as in NPIs partial reopening, the  $R_c$  will always be greater than 1. Similar results, but higher  $R_c$ , are shown with NPIs pre-pandemic reopening (C).

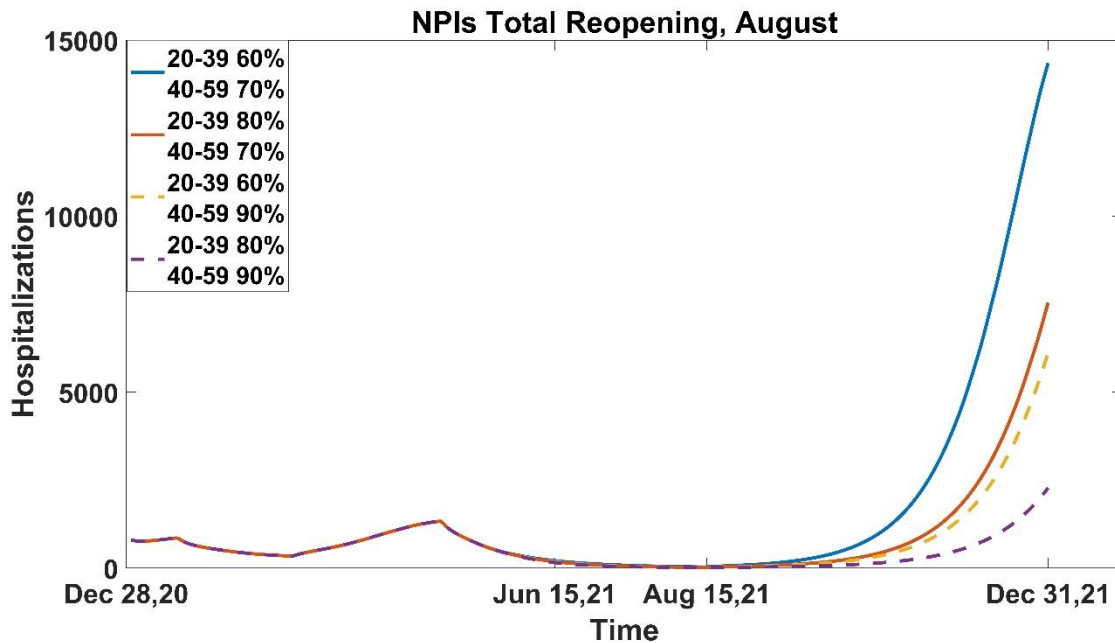


## Projections

**Table SI4** : Percentage change of cumulative deaths with respect to the baseline with respect to the base line NPIs no reopening in SI Figure SI3 with partial, total and pre-pandemic reopening in August and September, when age groups 10-19, 60-79 and 80+ reached coverages 20%, 80%, 90%. The second dose is given at a rate of 1/112 days<sup>-1</sup>.

<b>Projected percentage change of <u>cumulative cases</u> with respect to the base line NPIs no reopening in SI Figure SI3</b>							
		<b>If reopen in AUGUST</b>					
		<b>20-39 years coverage by June 14, 2021</b>					
		<b>60%</b>			<b>80%</b>		
<b>NPI's Level of reopening</b>		<b>Partial</b>	<b>Total</b>	<b>Pre-pandemic</b>	<b>Partial</b>	<b>Total</b>	<b>Pre-pandemic</b>
<b>40-59 years coverage by June 14, 2021</b>	<b>70%</b>	<b>4.15</b>	202	1178	<b>1.51</b>	71.34	1175
	<b>80%</b>	<b>2.75</b>	138.4	1175	<b>0.93</b>	45	1169
	<b>90%</b>	<b>1.77</b>	88	1169	<b>0.49</b>	27.6	1159
		<b>In reopen in SEPTEMBER</b>					
		<b>20-39 years coverage by June 14, 2021</b>					
		<b>60%</b>			<b>80%</b>		
<b>NPI's Level of reopening</b>		<b>Partial</b>	<b>Total</b>	<b>Pre-pandemic</b>	<b>Partial</b>	<b>Total</b>	<b>Pre-pandemic</b>
<b>40-59 years coverage by June 14, 2021</b>	<b>70%</b>	<b>-1.5</b>	33.4	1167	<b>-1.58</b>	10.67	1058
	<b>80%</b>	<b>-1.55</b>	20.8	1130	<b>-1.61</b>	6.3	977
	<b>90%</b>	<b>-1.59</b>	12.36	1075	<b>-1.64</b>	3.7	871

**Figure SI5:** Hospitalizations with partial reopening in August (A) if 40-59 is vaccinated 70%-00%, 20-39 60%, 80% and 10-19, 60-79 and 80+ reached coverages 20%, 80%, 90%. The second dose is given at a rate of 1/112 days<sup>-1</sup>.



**Table SI5:** Percentage change of cumulative cases and deaths with respect to the baseline with respect to the base line NPIs no reopening in SI Figure SI3, reducing efficacy by 10%, with partial, total and pre-pandemic reopening when age groups 10-19, 60-79 and 80+ reached coverages 20%, 80%, 90%.

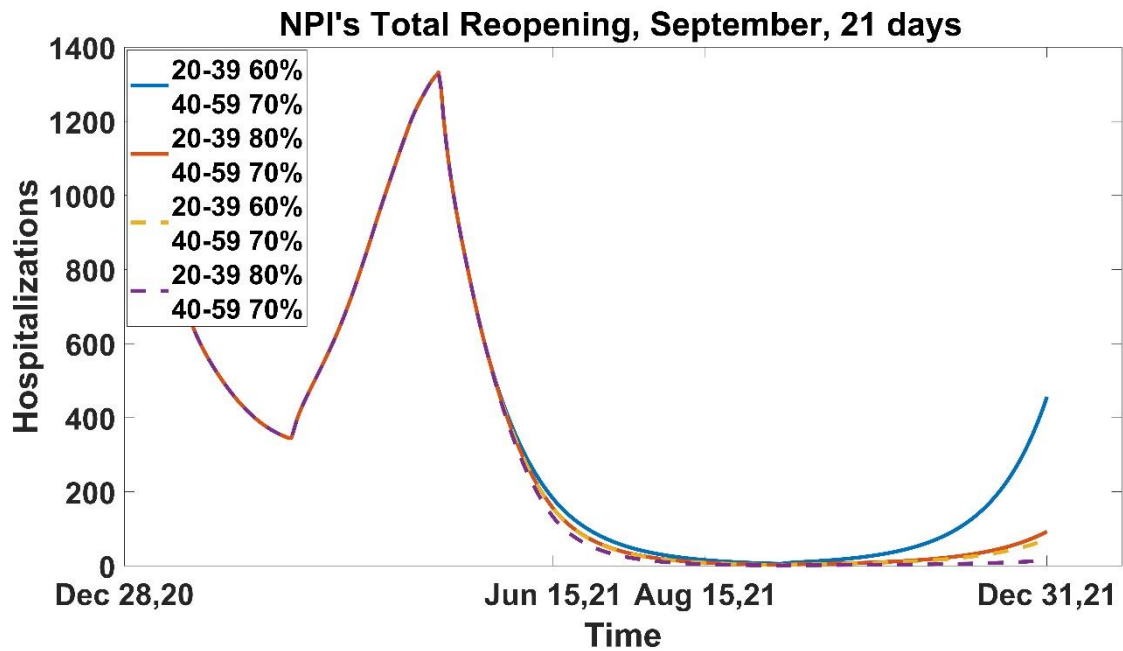
Projected percentage change of <u>cumulative deaths</u> with respect to the base line NPIs no reopening in SI Figure SI3 with reopening in September and efficacy reduced by 10%							
		20-39 years coverage by June 14, 2021					
		60%			80%		
NPI's Level of reopening		Partial	Total	Pre-pandemic	Partial	Total	Pre-pandemic
40-59 years coverage by June 14, 2021	70%	-1.51	48.56	1220	-1.58	18.58	1152
	80%	-1.55	32.12	1192	-1.61	12.27	1100
	90%	-1.59	21.6	1160	-1.63	7.54	1017

**Table SI6:** Percentage change of cumulative cases and deaths with respect to the base line NPIs no reopening in SI Figure SI3 with partial, total and pre-pandemic reopening in September and second dose given after 21 or 50 days. Age groups 10-19, 60-79 and 80+ are assumed to reach coverages 20%, 80%, 90% by mid June. Par.= partial; Tot.= total; Pre-pan.= pre-pandemic..

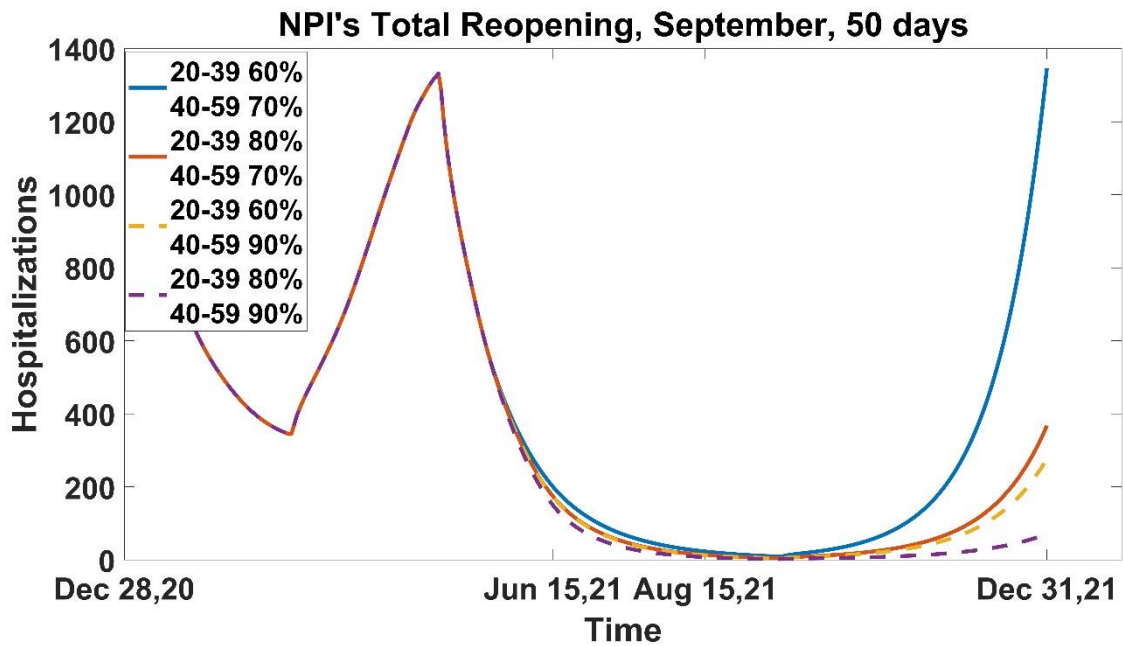
<b>Projected percentage change of cumulative deaths with respect to the base line NPIs no reopening in SI Figure SI3 with reopening in September</b>													
		<b>21 days Between dose 1 and dose 2</b>						<b>50 days Between dose 1 and dose 2</b>					
		<b>20-39 years coverage by June 14, 2021</b>						<b>20-39 years coverage by June 14, 2021</b>					
		<b>60%</b>			<b>80%</b>			<b>60%</b>			<b>80%</b>		
<b>NPI's Level of reopening</b>		<b>Par.</b>	<b>Tot.</b>	<b>Pre-pan.</b>	<b>Par.</b>	<b>Tot.</b>	<b>Pre-pan.</b>	<b>Par.</b>	<b>Tot.</b>	<b>Pre-pan.</b>	<b>Par.</b>	<b>Tot.</b>	<b>Pre-pan.</b>
<b>40-59 years coverage by June 14, 2021</b>	<b>70%</b>	-1.76	3.8	719	-1.81	0.30	370	-1.61	11.8	942	-1.67	2.8	722
	<b>80%</b>	-1.8	1.64	577	-1.83	-0.21	216	-1.65	6.76	868	-1.7	1.32	567
	<b>90%</b>	-1.82	0.47	414	-1.85	-0.48	110	-1.68	3.54	759	-1.72	0.52	400

**Figure SI6:** Hospitalizations with total reopening in September if 40-59 is vaccinated 70%-00%, 20-39 60%, 80% and 10-19, 60-79 and 80+ reached coverages 20%, 80%, 90% and if the second dose is given at a rate of (A) 1/21 days<sup>-1</sup> or (B) 1/50 days<sup>-1</sup>.

A



B



### Sensitivity Analysis

Using the Latin Hypercube Sampling/Partial Rank Correlation Coefficient (*LHS/PRCC*) we conducted sensitivity analysis on the parameters related to vaccination, such as level of coverage, waning immunity, minimum time to reach a certain level of vaccination, as well as infection-related parameters.

**Table SI7:** PRCC on cumulative cases and deaths.

<b>SENSITIVITY ANALYSIS</b>				
<b>PARAMETERS</b>	<b>DEFINITION</b>	<b>PRCC</b>		
		<b>CASES</b>	<b>DEATHS</b>	<b>HOSPITALIZATION (50 days after reopening in June)</b>
$\sigma$	Rate at which second dose is distributed	<b>-0.9503</b>	<b>-0.9503</b>	<b>-0.9739</b>
$\lambda_2$	Daily doses age group 10-19	-0.08731	-0.08731	-0.05824
$\lambda_3$	Daily doses age group 20-39	<b>-0.8041</b>	<b>-0.8041</b>	<b>-0.862</b>
$\lambda_4$	Daily doses age group 40-59	<b>-0.7653</b>	<b>-0.7653</b>	<b>-0.8558</b>
$\lambda_5$	Daily doses age group 60-79	-0.163	-0.163	-0.3133
$\lambda_6$	Daily doses age group 80+	0.02592	0.02592	-0.01986

Table SI7 shows the PRCCs of the sampled parameters  $\lambda_i$ ,  $i \in \{2,3,4,5,6\}$ , and  $\sigma$ , the daily doses in age group  $i$ , and the rate of receiving the second dose, respectively, on the cumulative cases and deaths. We observe that the age groups 3 and 4, namely, 20-39 and 40-59 years present the highest PRCC among the daily doses, suggesting that an increased vaccine coverage of these age groups leads to the largest reduction in cases and deaths. Moreover,  $\sigma$  is negatively correlated to cases and deaths, suggesting that if this rate is small, hence the time between doses is longer, cases and deaths will increase. Similar results are visible for the hospitalizations reported 50 days after reopening in June.