

1 **Specificity of SARS-CoV-2 antibody-detection assays against S and N protein among**
2 **pre-COVID-19 sera from patients with protozoan and helminth parasitic infections**

3

4 **Cedric P Yansouni MD^{1,2,3,4,#}, Jesse Papenburg MD MSc^{3,4,5,6}, Matthew P. Cheng**
5 **MDCM^{2,3,4}, Rachel Corsini MSc⁴, Chelsea Caya MScPH⁴, Fabio Vasquez Camargo⁷,**
6 **Luke B Harrison MD PhD^{2,3}, Gerasimos Zaharatos MD³, Philippe Büscher PhD⁸,**
7 **Babacar Faye MD⁹, Magatte Ndiaye PhD⁹, Greg Matlashewski PhD¹⁰, Momar Ndao**
8 **DVM PhD^{2,4,7,10,#}**

9

10 ¹ J.D. MacLean Centre for Tropical Diseases, McGill University, Montreal, Quebec, Canada

11 ² Division of Infectious Diseases, Department of Medicine, McGill University Health Centre,
12 Montreal, Quebec, Canada

13 ³ Division of Microbiology, Department of Clinical Laboratory Medicine, Optilab Montreal
14 - McGill University Health Centre, Montreal, Quebec, Canada

15 ⁴ McGill Interdisciplinary Initiative in Infection and Immunity, Montreal, Quebec, Canada

16 ⁵ Division of Pediatric Infectious Diseases, Department of Pediatrics, Montreal Children's
17 Hospital, Montreal, Quebec, Canada

18 ⁶ Department of Epidemiology, Biostatistics, and Occupational Health, School of Population
19 and Global Health, McGill University, Montreal, Quebec, Canada

20 ⁷ National Reference Centre for Parasitology, Research Institute of the McGill University
21 Health Centre, Montreal, Quebec, Canada

22 ⁸ Department of Biomedical Sciences, Institute of Tropical Medicine, Antwerp, Belgium

23 ⁹ Faculty of Medicine, Department of Parasitology, University of Cheikh Anta Diop, Dakar,
24 Senegal

25 ¹⁰ Department of Microbiology and Immunology, McGill University, Montreal, QC, Canada

NOTE: This preprint reports new research that has not been certified by peer review and should not be used to guide clinical practice.

26

27 Running Title: SARS-CoV-2 serology with parasitic infections

28 Tables: 3

29 Figures: 3

30 Word count text: 2747

31 Word count abstract: 237

32

33 *Funding*

34 This work was funded by a grant from the McGill Interdisciplinary Initiative in Infection and

35 Immunity (MI4); <https://www.mcgill.ca/mi4/>. C.P.Y and J.P. hold a “Chercheur-boursier

36 clinicien” career award from the Fonds de recherche du Québec – Santé (FRQS).

37 The funders had no role in study design, data collection and analysis, decision to publish, or

38 preparation of the manuscript.

39

40 *Potential conflicts of interest*

41 JP reports grants from MedImmune, grants from Sanofi Pasteur, grants and personal fees from

42 Seegene, grants and personal fees from AbbVie, outside the submitted work. MPC reports personal

43 fees from GEn1E Lifesciences (as a member of the scientific advisory board), personal fees from

44 nplex biosciences (as a member of the scientific advisory board), outside the submitted work. He is

45 the co-founder of Kanvas Biosciences and owns equity in the company. In addition, MPC has a

46 patent Methods for detecting tissue damage, graft versus host disease, and infections using cell-free

47 DNA profiling pending, and a patent Methods for assessing the severity and progression of SARS-

48 CoV-2 infections using cell-free DNA pending. CPY reports being on an Independent Data

49 Monitoring Committee (IDMC) for Medicago Inc. All other authors report no conflicts of interest.

50

51 #Correspondence to:

52 Cédric P Yansouni, MD, J.D. MacLean Centre for Tropical Diseases, Divisions of Infectious
53 Diseases and Medical Microbiology, McGill University Health Centre, 1001 Décarie Blvd.,
54 Room EM3.3242, Montreal, Qc., Canada H4A 3J1, Email: cedric.yansouni@mcgill.ca

55

56 Momar Ndao, DVM, PhD. Research Institute of the McGill University Health Centre, 1001

57 Décarie Blvd., Room EM3.3244, Montreal, Qc., Canada H4A 3J1, Email:

58 momar.ndao@mcgill.ca

59

60 **ABSTRACT**

61 **Background:** We aimed to assess the specificity of SARS-CoV-2 antibody detection assays
62 among people with known tissue-borne parasitic infections.

63 **Methods:** We tested three SARS-CoV-2 antibody-detection assays (cPass SARS-CoV-2
64 Neutralization Antibody Detection Kit, Abbott SARS-CoV-2 IgG assay, and STANDARD Q
65 COVID-19 IgM/IgG Combo Rapid Test) among 559 pre-COVID-19 sera.

66 **Results:** The specificity of assays was 95-98% overall. However, lower specificity was
67 observed among sera from patients with protozoan infections of the reticuloendothelial
68 system, such as human African trypanosomiasis (Abbott Architect; 88% [95%CI 75-95]),
69 visceral leishmaniasis (SD RDT IgG; 80% [95%CI 30-99]), and from patients with recent
70 malaria from a holoendemic area of Senegal (ranging from 91% for Abbott Architect and SD
71 RDT IgM to 98-99% for cPass and SD RDT IgG). For specimens from patients with evidence
72 of past or present helminth infection overall, test specificity estimates were all $\geq 96\%$. Sera
73 collected from patients clinically suspected of parasitic infections that tested negative for
74 these infections yielded a specificity of 98-100%. The majority (>85%) of false-positive
75 results were positive by only one assay.

76 **Conclusions:** The specificity of SARS-CoV-2 serological assays among sera from patients
77 with tissue-borne parasitic infections was below the threshold required for decisions about
78 individual patient care. Specificity is markedly increased by the use of confirmatory testing
79 with a second assay. Finally, the SD RDT IgG proved similarly specific to laboratory-based
80 assays and provides an option in low-resource settings when detection of anti-SARS-CoV-2
81 IgG is indicated.

82

83 Key Words: “SARS-CoV-2”, “COVID-19”, “Diagnostic accuracy”, “Antibody test”,
84 “Serology”, “Parasitic infections”, “Malaria”, “Kinetoplastid infections”, “Protozoan

85 infections”, “Helminth infections”, “*Strongyloides*”, “*Schistosoma*”, “*Filaria*”, “*Trichinella*”,

86 “Neglected tropical diseases”

87

88 INTRODUCTION

89 Use cases for serological testing for *Severe acute respiratory syndrome-related*
90 *coronavirus-2* (SARS-CoV-2) have been reviewed in detail (1, 2). Despite a rapid increase in
91 the number and availability of serological assays detecting anti-SARS-CoV-2 antibodies,
92 critical knowledge gaps remain regarding cross reactivity of assays with sera from patients
93 with non-coronavirus infectious agents.

94
95 In tropical regions of the world, several infections that dominate the local
96 epidemiology of acute fever syndromes may cause non-specific cross reactivity with a wide
97 range of serological assays (3-7). The mechanisms underlying cross reactivity include
98 infection of the reticuloendothelial system by several protozoans, with associated polyclonal
99 B-lymphocyte proliferation (6, 7), and the broad diversity of antibodies elicited by various
100 helminth infections (8). These infections include many Neglected Tropical Diseases (NTD)
101 and Malaria, for which the combined global burden exceeds 1.6 billion cases annually, with
102 3.8 billion at risk (9, 10). Simultaneously, three of the four countries with the largest total
103 number of deaths attributed to COVID-19 are currently Brazil, India, and Mexico (11), all of
104 which suffer a high burden of NTDs or malaria. As a result of this overlapping incidence, the
105 specificity of SARS-CoV-2 serological tests may be different in countries endemic for these
106 infections compared to that in high-income countries.

107
108 We aimed to assess the specificity of SARS-CoV-2 antibody detection assays among
109 people either with known tissue-borne parasitic infections or residing in areas where such
110 infections are endemic. We tested three SARS-CoV-2 antibody-detection assays against
111 either the S or the N protein, among a large collection of pre-COVID-19 sera from patients
112 proven to have different tropical infectious diseases.

113 **METHODS**

114 *Ethics*

115 This work was approved by the Research Ethics Boards of the Research Institute of
116 the McGill University Health Centre (RI-MUHC # 2021-7246).

117

118 *Source of specimens tested*

119 Specimens were well-characterised sera collected prior to July 2019 from patients
120 with active or recent malaria imported to Canada, with active or recent malaria in a
121 hyperendemic area (Senegal), from clinical suspects for human African trypanosomiasis and
122 for visceral leishmaniasis, from seropositives for Chagas disease, for *Strongyloides* sp., for
123 *Schistosoma* sp., for filaria species, and for *Trichinella* sp., and from negative controls for
124 whom tissue-borne parasitic infection was suspected but antibody testing was negative. The
125 source and types of specimens are detailed in Table 1.

126

127 *SARS-CoV-2 antibody testing*

128 Three different SARS-CoV-2 antibody-detection assays were selected to assess the
129 specificity of assays that detect different analytes, including anti-SARS-CoV-2 N-protein
130 IgM, anti-SARS-CoV-2 N-protein IgG, and anti-Receptor Binding Domain (RBD) blocking
131 antibodies of all immunoglobulin subclasses. We included an immunochromatographic rapid
132 diagnostic test (RDT) that can be performed in low resource settings and available from a
133 quality-assured manufacturer with an international presence to enhance the relevance of this
134 evaluation to the low resource settings where NTDs and malaria are common.

135

136 *Culture-free neutralization antibody detection assay (cPass)*

137 The cPass SARS-CoV-2 Neutralization Antibody Detection Kit (cPass; Genscript,
138 Piscataway, NJ) uses a blocking ELISA format with human ACE-2 receptor molecules
139 coated on an ELISA plate (12, 13). Human sera pre-incubated with labelled epitopes of the
140 RBD on S1 proteins are then transferred to the plate. This blocking ELISA serves as a
141 surrogate assay to determine the capacity of human sera to block the interaction between the
142 Spike fusion protein (through its RBD) and its cellular receptor ACE-2. The analyte detected
143 is anti-RBD blocking Ab of all subclasses. All the specimens, including positive and negative
144 controls provided with the kit, were processed according to the manufacturer's instructions,
145 and included a 10X dilution factor of the primary specimen. All specimens and controls were
146 tested in duplicate and the percentage of inhibition calculation was based on the mean of OD
147 for each duplicate. A cut-off of 30% inhibition for SARS-CoV-2 neutralizing antibody
148 detection was used to determine the presence of neutralizing antibodies, based on the
149 manufacturer's instructions for use.

150

151 ***Abbott SARS-CoV-2 IgG assay***

152 The Abbott SARS-CoV-2 IgG assay (Abbott Laboratories, Abbott Park, Illinois,
153 USA), which detects IgG against SARS-CoV-2 N-protein, was performed on the Architect
154 i2000sr platform according to the manufacturer's instructions. Specimens were thawed on the
155 day of testing and were centrifuged 10,000g for 10 min prior to each run. A sample to stored
156 calibrator index (S/C) cut-off value of 1.4 was used for positive results, according to the
157 manufacturer's recommendations.

158

159 ***STANDARD Q COVID-19 IgM/IgG Combo Rapid Test***

160 The STANDARD Q COVID-19 IgM/IgG Combo Rapid Test (SD BioSensor,
161 Gyeonggi-do, Republic of Korea) is a rapid immunochromatography test for the qualitative

162 detection of specific IgM and IgG against SARS-CoV-2 N-protein on two separate test lines.
163 Serum specimens were processed according to the manufacturer's instructions. Briefly, 10µl
164 of serum were applied to the specimen well of the test device. Three drops (90µl) of buffer
165 were added immediately and vertically into the same specimen well. The test results were
166 read visually at within 15 minutes. Any visible band was considered a positive result. To
167 facilitate analysis of positive test results, the intensity of test bands was further classified as:
168 no signal (0), barely visible but present (1), low intensity (faint but definitively positive) (2),
169 and medium to high intensity (3) (Figure 1).

170

171 *Statistical analysis*

172 Because all specimens were collected in the pre-pandemic era, prior to July 2019, all
173 positive results for SARS-CoV-2 antibodies were considered false positives. The primary
174 outcome calculated was test specificity and its corresponding 95% confidence intervals (95%
175 CI), estimated according to a binomial distribution using Wilson Score method with Yate's
176 continuity correction as appropriate. The secondary outcome was relative risk (RR) for a false
177 positive and the associated 95% CI. Both were estimated according to (i) positivity status for
178 each parasite of interest, and (ii) SARS-CoV-2 target antigen tested. Statistical analyses were
179 performed using R version 3.5.2 (R Core Team, Vienna, Austria). Area-proportional Venn
180 diagrams were generated using eulerAPE version 3 (14).

181

182 **RESULTS**

183 *Specificity of three commercial SARS-CoV-2 serological assays*

184 The origin and characteristics of pre-COVID-19 specimens are reported in Table 1.
185 Table 2 presents test specificity across the 559 samples tested. Overall, the point estimates of
186 specificity of the cPass (10/559: 98%; 95% CI 97-99) and SD RDT IgG result (15/559: 97%;

187 95% CI 96-98) were similar to those for Abbott Architect (26/548: 95%; 95% CI 93-97) and
188 SD RDT IgM result (30/559: 95%; 95% CI 92-96).

189

190 For specimens from patients with evidence of blood- or tissue-invasive protozoan
191 infections overall, test specificity was as follows: cPass (4/339: 99%; 95% CI 97-99), SD
192 RDT IgG results (10/339: 97%; 95% CI 95-98), Abbott Architect (19/328: 94%; 95% CI 91-
193 96) and SD RDT IgM result (23/339: 93%; 95% CI 90-95). For specimens from Senegalese
194 patients with malaria, specificity ranged from 91% (95% CI 84-95) for the Abbott Architect
195 and SD RDT IgM result to 99% (95% CI 94-100) for the SD RDT IgG result. For specimens
196 from travellers with imported malaria, test specificity ranged between 92% and 99%. Among
197 sera positive for anti-*Leishmania* sp and anti-*Trypanosoma cruzi* antibodies, cPass, Abbott
198 Architect and SD RDT IgM displayed 100% specificity. However, the SD RDT IgG result
199 yielded specificities of 80% (95% CI 30-99) and 92% (95% CI 81-97) against visceral
200 leishmaniasis and human American trypanosomiasis, respectively. The SD RDT IgG result
201 did not generate any false positives when used against human African trypanosomiasis
202 specimens, whereas specificity of 88% (95% CI 75-95) was observed for Abbott Architect.

203

204 For specimens from patients with evidence of past or present helminth infection
205 overall, test specificity estimates were all $\geq 96\%$. When evaluated against specimens
206 seropositive for *Strongyloides* sp. (n=50) and *Trichinella* sp. (n=30), specificities ranged from
207 96% to 98%. Test specificity assessed against specimens seropositive for filarial species
208 (n=40) ranged from 92% to 95%, and from 92% to 97% against specimens seropositive for
209 *Schistosoma* sp. (n=40).

210

211 Sera collected from patients clinically suspected of parasitic infections that tested
212 negative were also assessed. cPass yielded a specificity of 98% (1 false positive out of 60),
213 whereas Abbott Architect, SD RDT IgG and SD RDT IgM showed a specificity of 100%.

214

215 To allow statistical comparisons across the entire group, we computed the relative risk
216 (RR) and 95% CI of a false positive result by assay and target analyte, according to specimen
217 origin (Table 3). Compared to cPass, the risk of a false positive SARS-CoV-2 result was
218 higher for the Architect and the SD RDT IgM result overall across all specimens (RR 2.65,
219 95% CI 1.29-5.45; and RR 3.00, 95% CI 1.48-6.08, respectively), for malaria specimens
220 overall (RR 4.89, 95% CI 1.42-16.79; and RR 7.00, 95% CI 2.11-23.16), and for protozoan
221 infections overall (RR 4.91, 95% CI 1.69-14.28; RR 5.75, 95% CI 2.01-16.45). No significant
222 differences were seen across assays for helminthic infections. SD RDT IgG relative risk of
223 false positive was not significantly different to that of cPass for any of the specimen origins.

224

225 *Characterisation of false positive results in terms of categorical agreement and signal*
226 *intensity across serological assays*

227 Categorical agreement between commercial serological assays for the detection of
228 SARS-CoV-2 is depicted in Figure 2. The majority (>85%) of false positive results were
229 positive by only one of the assays tested. When comparing cPass, Abbott Architect and SD
230 RDT IgG (Fig. 2 A), cPass, Abbott Architect and SD RDT IgM (Fig. 2 B) or cPass, Abbott
231 Architect and SD RDT IgG or SD RDT IgM (Fig. 2 C), all three assays were in agreement for
232 only 14% (5/36), 7.8% (4/51) or 8.3% (5/60) of the false positive results, respectively. When
233 comparing SD RDT IgG and SD RDT IgM (Fig. 2 D), the two assays were in agreement for
234 15% (4/39) of the specimens with a false positive result.

235

236 Readout intensities of each serological test were assembled in a heatmap for
237 specimens with false positive results from one or more tests (Figure 3). Overall, among
238 specimens with false positive results, there was very little correlation between the signal
239 intensity of a false positive test result and the probability of a false positive with another
240 assay. Strong signal intensities were common among false positive results from laboratory-
241 based assays. The cPass yielded positive results for 10/60 (16.7%) specimens with false
242 positive results from one or more tests, with 5 of these having a binding inhibition of >50%.
243 The Abbott Architect yielded positive results for 26/60 (43.3%) false-positive specimens,
244 with 17 of these having sample-to-stored-calibrator index (S/C) of >1.68, which we
245 considered as strong positives. By contrast, weak or very weak signal intensity was common
246 for the false-positive results observed with the SD RDT. SD RDT IgG was positive among
247 16/60 (36.7%) false-positive specimens, with 5 of these having “barely visible but present”
248 bands. By contrast, SD RDT IgM was positive for 30/60 (50%) false positive specimens, with
249 20 of these having “barely visible but present” bands. All but one of the other positive SD
250 RDT IgM results were considered “weak”.

251

252 **DISCUSSION**

253 We sought to assess the specificity of three SARS-CoV-2 antibody detection assays
254 among people either with known tissue-borne parasitic infections or residing in areas where
255 such infections are highly endemic. We tested assays against either the S or the N protein,
256 among a large collection of well characterised pre-COVID-19 sera from clinical suspects
257 with relevant tropical infectious diseases which may lead to cross-reactions with SARS-CoV-
258 2 serologic assays. Previous reports found increased frequency of non-specific binding
259 leading to positive results in smaller cohorts of patients with and without recent malaria in
260 Nigeria (15), Benin (16) and Tanzania and Zambia (17). We confirm these findings with

261 different serological assays and extend them to patients with imported malaria residing in a
262 non-endemic area, as well as to patients with several key tropical infectious diseases for
263 which there is a current void of available information on which to base interpretation of
264 serological results for SARS-CoV-2.

265

266 The observed specificity of all assays ranged from 95-98% in the overall group of
267 specimens. However, those for the Abbott Architect (95% [95%CI 93-97]) and the SD RDT
268 IgM (95% [95%CI 93-96]) fell short of the WHO-recommended 97% benchmark for SARS-
269 CoV-2 serological assays (18). Moreover, these values are well below estimates for the
270 Abbott Architect from previous data among specimens from high-income countries,
271 including 99.6% reported by the manufacturer using a panel of pre-COVID-19 specimens or
272 from patients positive for alternative respiratory pathogens (n = 1070) (19) and 99.6%
273 reported in an independent evaluation of 1099 pre-COVID-19 specimens (20). Similarly, the
274 values for the SD RDT IgM are lower than the 100% specificity reported in the FDA
275 serology test evaluation report for the STANDARD Q COVID-19 IgM/IgG Combo Rapid
276 (21).

277

278 As expected, the lowest observed specificities were seen among sera from patients
279 with protozoan infections of the reticuloendothelial system, such as human African
280 trypanosomiasis (Abbott Architect; 88% [95%CI 75-95]), visceral leishmaniasis (SD RDT
281 IgG; 80% [95%CI 30-99]), and from patients with recent malaria from a holoendemic area of
282 Senegal (ranging from 91% for Abbott Architect and SD RDT IgM to 98-99% for cPass and
283 SD RDT IgG). Non-specific cross-reaction among patients in malaria endemic areas may be
284 potentiated by co-infections rather than from malaria infections alone. Alternatively, repeated
285 infections with *Plasmodium* species rather than co-infections with other organisms may lead

286 to a greater cross-reactivity. This is consistent with the association between false positive
287 SARS-CoV-2 results and the presence of anti-*Plasmodium* antibodies (15), as well as the
288 relatively higher specificity observed in our cohort of patients with antibodies to tissue-
289 invasive helminths. Taken as a whole, the observed specificities among the assays and
290 specimens tested are likely sufficiently elevated to be useful for serosurveys and
291 epidemiologic tracking, but below the threshold required for individual patient care decisions
292 (1, 18).

293

294 In order to allow statistical comparisons between different SARS-CoV-2 diagnostic
295 assays, we computed the relative risk of a false positive result by diagnostic assay and target
296 analyte, according to specimen origin (Table 3). The cPass showed the least variation across
297 specimen origins and consistently had the highest specificity across groups. This assay was
298 designed as a surrogate viral neutralization assay and measures the strength of inhibition of
299 RDB binding to ACE-2 by host antibodies of any subclass. Perhaps surprisingly for a lateral
300 flow immunochromatographic SARS-CoV-2 assay, the SD RDT IgG also showed very high
301 performance across groups. Using cPass as the reference value, SD RDT IgG had a lower
302 relative risk (RR) of a false positive result than either SD RDT IgM or Abbott Architect. The
303 latter two tests were statistically significantly more likely to yield false positive results than
304 the cPass for specimens with evidence of protozoan infections overall but not for specimens
305 with evidence of tissue-invasive helminth infections. We previously showed that cPass has
306 marginal advantages over anti-RBD IgG ELISA (12). In this case, the SD RDT IgG detects
307 anti-N IgG and performed comparably to a sophisticated surrogate viral neutralization assay.
308 Moreover, it compared favourably to the laboratory-based Abbott Architect in this group of
309 specimens of interest. This is relevant to low-resource tropical settings where central
310 laboratory capacity frequently limits care of patients with fever syndromes (22).

311

312 The finding of very low categorical agreement between SARS-CoV-2 serological
313 assays among specimens with a false positive result is consistent with non-specific binding
314 between host antibodies and test antigens. This observation can be leveraged to design testing
315 algorithms with increased specificity. In our specimen set, requiring a positive result from a
316 second test among cPass, Abbott Architect, or SD RDT IgG would rule out the majority of
317 false positive results obtained after a first positive result (Figure 2). Others have proposed an
318 avidity assay using various concentrations of urea washes to prevent non-specific binding
319 (15) but this approach may not be suitable in low-resource settings, even when centralized
320 laboratories exist.

321

322 Limitations of our study include the fact that the available volume of stored pre-
323 pandemic specimens precluded the possibility of performing specific avidity testing or
324 assessing for the presence of antibodies to seasonal coronaviruses that may have cross-
325 reacted with the SARS-CoV-2 serological assays. However, a report from the United States
326 found no false positives for Abbott Architect or SD RDT IgM/IgG among 21 patients with
327 recent seasonal coronavirus infections: NL63 (n = 11), HKU1 (n = 7) and 229E (n = 3) (23).
328 Moreover, the fact that our data recapitulates findings from previous studies in malarial-
329 endemic areas is reassuring regarding their robustness.

330

331 **CONCLUSIONS**

332 The specificity of SARS-CoV-2 serological assays was decreased among sera from
333 patients with tissue-borne parasitic infections, below the threshold required for decisions
334 about individual patient care. Specificity is markedly increased by the use of confirmatory
335 testing with a second assay. Finally, the SD RDT IgG proved similarly specific to laboratory-

336 based assays and provides an option in low-resource settings when detection of anti-SARS-
337 CoV-2 IgG is indicated.

338 **REFERENCES**

- 339 1. Cheng MP, Yansouni CP, Basta NE, Desjardins M, Kanjilal S, Paquette K, Caya C,
340 Semret M, Quach C, Libman M, Mazzola L, Sacks JA, Dittrich S, Papenburg J. 2020.
341 Serodiagnostics for Severe Acute Respiratory Syndrome-Related Coronavirus 2 : A
342 Narrative Review. *Ann Intern Med* 173:450-460.
- 343 2. Van Caesele P, Bailey D, Forgie SE, Dingle TC, Krajden M. 2020. SARS-CoV-2
344 (COVID-19) serology: implications for clinical practice, laboratory medicine and
345 public health. *CMAJ* 192:E973-e979.
- 346 3. Lejon V, Ngoyi DM, Ilunga M, Beelaert G, Maes I, Büscher P, Fransen K. 2010. Low
347 specificities of HIV diagnostic tests caused by *Trypanosoma brucei gambiense*
348 sleeping sickness. *J Clin Microbiol* 48:2836-9.
- 349 4. Gillet P, Mumba Ngoyi D, Lukuka A, Kande V, Atua B, van Griensven J, Muyembe
350 JJ, Jacobs J, Lejon V. 2013. False positivity of non-targeted infections in malaria
351 rapid diagnostic tests: the case of human african trypanosomiasis. *PLoS Negl Trop*
352 *Dis* 7:e2180.
- 353 5. Shanks L, Ritmeijer K, Piriou E, Siddiqui MR, Kliescikova J, Pearce N, Ariti C,
354 Muluneh L, Masiga J, Abebe A. 2015. Accounting for False Positive HIV Tests: Is
355 Visceral Leishmaniasis Responsible? *PLoS One* 10:e0132422.
- 356 6. Ly A, Hansen DS. 2019. Development of B Cell Memory in Malaria. *Front Immunol*
357 10:559.
- 358 7. Silveira ELV, Dominguez MR, Soares IS. 2018. To B or Not to B: Understanding B
359 Cell Responses in the Development of Malaria Infection. *Front Immunol* 9:2961.
- 360 8. Rahumatullah A, Balachandra D, Noordin R, Baharudeen Z, Lim YY, Choong YS,
361 Lim TS. 2021. Broad specificity of immune helminth scFv library to identify
362 monoclonal antibodies targeting *Strongyloides*. *Sci Rep* 11:2502.

- 363 9. World Health Organization. 2020. Ending the neglect to attain the Sustainable
364 Development Goals: a road map for neglected tropical diseases 2021–2030. World
365 Health Organization, Geneva.
- 366 10. World Health Organization. 2020. World malaria report 2020: 20 years of global
367 progress and challenges. World Health Organization, Geneva.
- 368 11. Center for Systems Science and Engineering (CSSE). 2020. COVID-19 Dashboard,
369 Johns Hopkins University. <https://coronavirus.jhu.edu/map.html>. Accessed June 17,
370 2021.
- 371 12. Papenburg J, Cheng MP, Corsini R, Caya C, Mendoza E, Manguiat K, Lindsay LR,
372 Wood H, Drebot MA, Dibernardo A, Zaharatos G, Bazin R, Gasser R, Benlarbi M,
373 Gendron-Lepage G, Beaudoin-Bussièrès G, Prévost J, Finzi A, Ndao M, Yansouni
374 CP. 2021. Evaluation of a Commercial Culture-Free Neutralization Antibody
375 Detection Kit for Severe Acute Respiratory Syndrome-Related Coronavirus-2 and
376 Comparison With an Antireceptor-Binding Domain Enzyme-Linked Immunosorbent
377 Assay. *Open Forum Infect Dis* 8:ofab220.
- 378 13. Taylor SC, Hurst B, Charlton CL, Bailey A, Kanji JN, McCarthy MK, Morrison TE,
379 Huey L, Annen K, DomBourian MG, Knight V. 2021. A New SARS-CoV-2 Dual-
380 Purpose Serology Test: Highly Accurate Infection Tracing and Neutralizing Antibody
381 Response Detection. *J Clin Microbiol* 59.
- 382 14. Micallef L, Rodgers P. 2014. eulerAPE: drawing area-proportional 3-Venn diagrams
383 using ellipses. *PLoS One* 9:e101717.
- 384 15. Steinhardt LC, Ige F, Iriemenam NC, Greby SM, Hamada Y, Uwandu M, Aniedobe
385 M, Stafford KA, Abimiku A, Mba N, Agala N, Okunoye O, Mpamugo A,
386 Swaminathan M, Onokevbagbe E, Olaleye T, Odoh I, Marston BJ, Okoye M,
387 Abubakar I, Rangaka MX, Rogier E, Audu R. 2021. Cross-Reactivity of Two SARS-

- 388 CoV-2 Serological Assays in a Setting Where Malaria Is Endemic. *J Clin Microbiol*
389 59:e0051421.
- 390 16. Yadouleton A, Sander AL, Moreira-Soto A, Tchibozo C, Hounkanrin G, Badou Y,
391 Fischer C, Krause N, Akogbeto P, de Oliveira Filho EF, Dossou A, Brünink S, Aïssi
392 MAJ, Djingarey MH, Hounkpatin B, Nagel M, Drexler JF. 2021. Limited Specificity
393 of Serologic Tests for SARS-CoV-2 Antibody Detection, Benin. *Emerg Infect Dis*
394 27:233-7.
- 395 17. Tso FY, Lidenge SJ, Peña PB, Clegg AA, Ngowi JR, Mwaiselage J, Ngalamika O,
396 Julius P, West JT, Wood C. 2021. High prevalence of pre-existing serological cross-
397 reactivity against severe acute respiratory syndrome coronavirus-2 (SARS-CoV-2) in
398 sub-Saharan Africa. *Int J Infect Dis* 102:577-583.
- 399 18. World Health Organization. 2020. Target product profiles for priority diagnostics to
400 support response to the COVID-19 pandemic v.1.0. World Health Organization,
401 Geneva.
- 402 19. Abbott Laboratories. 2020. SARS-CoV-2 IgG for use with ARCHITECT package
403 insert. Abbott Laboratories, Chicago, IL.
- 404 20. Patel EU, Bloch EM, Clarke W, Hsieh YH, Boon D, Eby Y, Fernandez RE, Baker
405 OR, Keruly M, Kirby CS, Klock E, Littlefield K, Miller J, Schmidt HA, Sullivan P,
406 Piwowar-Manning E, Shrestha R, Redd AD, Rothman RE, Sullivan D, Shoham S,
407 Casadevall A, Quinn TC, Pekosz A, Tobian AAR, Laeyendecker O. 2021.
408 Comparative Performance of Five Commercially Available Serologic Assays To
409 Detect Antibodies to SARS-CoV-2 and Identify Individuals with High Neutralizing
410 Titers. *J Clin Microbiol* 59.

- 411 21. SD BioSensor Inc. 2020. Serology Test Evaluation Report for “STANDARD Q
412 COVID-19 IgM/IgG Duo, Updated June 21, 2020. SD BioSensor Inc, Gyeonggi-do,
413 Republic of Korea.
- 414 22. Semret M, Ndao M, Jacobs J, Yansouni CP. 2018. Point-of-care and point-of-'can':
415 leveraging reference-laboratory capacity for integrated diagnosis of fever syndromes
416 in the tropics. *Clin Microbiol Infect* 24:836-844.
- 417 23. Paiva KJ, Grisson RD, Chan PA, Huard RC, Caliendo AM, Lonks JR, King E, Tang
418 EW, Pytel-Parenteau DL, Nam GH, Yakirevich E, Lu S. 2021. Validation and
419 performance comparison of three SARS-CoV-2 antibody assays. *J Med Virol* 93:916-
420 923.
- 421

422 **FIGURE LEGENDS**

423 **Figure 1** Categorization for SD RDT band intensity, based on a standard colour scale
424 provided by SD Biosensor. A score of 0 indicates no signal; 1 indicates barely visible but
425 present (corresponding to R1-R6 on the standard scale); 2 indicates low intensity (i.e. faint
426 but definitively positive, corresponding to R7-R12 on the standard scale); 3 indicates medium
427 to high intensity (corresponding to R13-R21 on the standard scale). The upper row shows the
428 standard color scale provided by the manufacturer. The lower row shows actual RDTs used in
429 the present study, photographed on the same day under standardized lighting conditions. The
430 illustrative test line is shown in the dashed rectangle.

431

432 **Figure 2.** Venn diagram comparing false positive results from cPass, Abbott Architect, SD
433 RDT IgG and SD RDT IgM serology from patients with protozoan and helminth parasites
434 infections. Panels A, B, and C represent the overlap of cPass and Abbott Architect with SD
435 RDT IgG, SD RDT IgM, or any positive SD RDT result, respectively. Panel D depicts the
436 overlap of SD RDT IgG and SD RDT IgM. RDT denotes rapid diagnostic test; numbers
437 denote the number of false positive specimens in each category.

438

439 **Figure 3.** Heatmap of readout signal intensity of all false positive specimens identified using
440 three commercial serological assays for the detection of SARS-CoV-2. RDT denotes rapid
441 diagnostic test. Cut-off used to determine cPass positivity: Negative was <20% inhibition;
442 Indeterminate was 20 to <30% inhibition; Positive was \geq 30% inhibition.
443 Cut-off used to determine Abbott Architect positivity: Negative was a signal-to-cut-off ratio
444 <1.0; Weak positive was 1.0 to 1.2; Strong positive was >1.2

445 Categorization for SD RDT band intensity: a score of 0 indicates no signal; 1 indicates barely
 446 visible but present; 2 indicates low intensity (i.e., faint but definitively positive); 3 indicates
 447 medium to high intensity.

cPass	Negative: <20% inhibition	-	Indeterminate: 20 to <30% inhibition	Positive: ≥30% inhibition
Abbott Architect	Negative: signal-to-cut-off ratio <1.0	-	Weak positive: signal-to-cut-off ratio 1.0 to 1.2	Strong positive: signal-to-cut-off ratio >1.2
SD RDT band intensity	No signal: Indicated by 0	Barely visible but present: Indicated by 1	Low intensity (faint but definitively positive): Indicated by 2	Medium to high intensity: Indicated by 3

448

Table 1. Origin of Pre-COVID-19 specimens.

Parasitic diagnosis*	Origin	Testing details
Imported malaria*	Specimens from clinical suspects submitted to NRCP	Patients in whom a separate whole blood specimen submitted to NRCP was positive for malaria by PCR within 14 days
Malaria* in hyperendemic area	Specimens from clinical suspects submitted to the Department of Parasitology, University of Cheikh Anta Diop, Dakar, Senegal	Confirmed active or recent malaria by microscopy or RDT
Visceral leishmaniasis* (<i>Leishmania donovani</i> complex)	Specimens from clinical suspects submitted to NRCP	Direct agglutination test (DAT)
Human African trypanosomiasis* (<i>Trypanosoma brucei gambiense</i>)	Specimens from clinical suspects submitted to ITM or NRCP	Card agglutination test for trypanosomiasis (CATT)
<i>Trypanosoma cruzi</i> seropositivity	Specimens from clinical suspects submitted to NRCP	Crude <i>Trypanosoma cruzi</i> epimastigotes antigen enzyme-linked immunosorbent assay (ELISA)
<i>Strongyloides stercoralis</i> seropositivity	Specimens from clinical suspects submitted to NRCP	Recombinant <i>Strongyloides</i> antigen (NIE) ELISA
<i>Schistosoma</i> sp. seropositivity	Specimens from clinical suspects submitted to NRCP	Crude <i>Schistosoma mansoni</i> and <i>S haematobium</i> antigens ELISA
<i>Filaria</i> sp. seropositivity	Specimens from clinical suspects submitted to NRCP	Crude <i>Brugia malayi</i> antigen ELISA
Trichinellosis* (<i>Trichinella</i> sp.)	Specimens from clinical	Crude <i>Trichinella spiralis</i> antigen ELISA

	suspects submitted to	
	NRCP	
Sera from parasite-suspects negative for all above pathogens	Specimens from clinical suspects submitted to NRCP	Sera from parasite-suspects negative for all above pathogens

* These specimens were drawn from patients clinically suspected of active disease for the purpose of diagnosis, as opposed to screening of asymptomatic individuals. ITM Institute of Tropical Medicine Antwerp; NRCP National Reference Centre for Parasitology; RDT rapid diagnostic test.

Table 2. Diagnostic specificity of three commercial serological assays for the detection of SARS-CoV-2.

PRE-COVID SPECIMEN ORIGIN	Number	Assay	Analyte detected	FP	TN	Specificity % (95% CI) ^a
Confirmed active or recent malaria by microscopy or RDT (Senegal -endemic area)*	100	cPass ^b	Anti-RBD blocking Ab, all subclasses	2	98	98 (93-99)
	90 ^c	Abbott Architect	Anti-N-IgG	8	82	91 (83-95)
	100	SD RDT IgM	Anti-N-IgM	9	91	91 (84-95)
	100	SD RDT IgG	Anti-N-IgG	1	99	99 (94-100)
Patients in whom a separate whole blood specimen was positive for malaria by PCR within the same 14 days (NRCP -non-endemic area)*	143	cPass	Anti-RBD blocking Ab, all subclasses	1	142	99 (96-100)
	142 ^d	Abbott Architect	Anti-N-IgG	6	136	96 (91-98)
	143	SD RDT IgM	Anti-N-IgM	12	131	92 (86-95)
	143	SD RDT IgG	Anti-N-IgG	4	139	97 (93-99)
Visceral leishmaniasis*	5	cPass	Anti-RBD blocking Ab, all subclasses	0	5	100 (46-100)
	5	Abbott Architect	Anti-N-IgG	0	5	100 (46-100)
	5	SD RDT IgM	Anti-N-IgM	0	5	100 (46-100)
	5	SD RDT IgG	Anti-N-IgG	1	4	80 (30-99)
Human African trypanosomiasis *	42	cPass	Anti-RBD blocking Ab, all	1	41	98 (88-99)

		subclasses				
	42	Abbott Architect	Anti-N-IgG	5	37	88 (75-95)
	42	SD RDT IgM	Anti-N-IgM	2	40	95 (84-99)
	42	SD RDT IgG	Anti-N-IgG	0	42	100 (89-100)
<i>Trypanosoma cruzi</i> seropositivity						
	49	cPass	Anti-RBD blocking Ab, all subclasses	0	49	100 (91-100)
	49	Abbott Architect	Anti-N-IgG	0	49	100 (93-100)
	49	SD RDT IgM	Anti-N-IgM	0	49	100 (93-100)
	49	SD RDT IgG	Anti-N-IgG	4	45	92 (81-97)
Overall protozoan parasitic infections (Malaria/leishmaniasis/trypanosomiasis)						
	339	cPass	Anti-RBD blocking Ab, all subclasses	4	335	99 (97-99)
	328	Abbott Architect	Anti-N-IgG	19	309	94 (91-96)
	339	SD RDT IgM	Anti-N-IgM	23	316	93 (90-95)
	339	SD RDT IgG	Anti-N-IgG	10	329	97 (95-98)
<i>Strongyloides stercoralis</i> seropositivity						
	50	cPass	Anti-RBD blocking Ab, all subclasses	2	48	96 (86-99)
	50	Abbott Architect	Anti-N-IgG	1	49	98 (89-100)
	50	SD RDT IgM	Anti-N-IgM	1	49	98 (89-100)
	50	SD RDT IgG	Anti-N-IgG	1	49	98 (89-100)
<i>Schistosoma</i> sp. seropositivity						
	40	cPass	Anti-RBD blocking Ab, all subclasses	1	39	97 (87-99)
	40	Abbott Architect	Anti-N-IgG	2	38	95 (83-99)

	40	SD RDT IgM	Anti-N-IgM	3	37	92 (80-97)
	40	SD RDT IgG	Anti-N-IgG	1	39	97 (87-99)
<i>Filaria</i> sp. seropositivity	40	cPass	Anti-RBD blocking Ab, all subclasses	2	38	95 (83-99)
	40	Abbott Architect	Anti-N-IgG	3	37	92 (80-97)
	40	SD RDT IgM	Anti-N-IgM	2	38	95 (83-99)
	40	SD RDT IgG	Anti-N-IgG	2	38	95 (83-99)
Trichinellosis* (<i>Trichinella</i> sp.)	30	cPass	Anti-RBD blocking Ab, all subclasses	0	30	100 (86-100)
	30	Abbott Architect	Anti-N-IgG	1	29	97 (83-99)
	30	SD RDT IgM	Anti-N-IgM	1	29	97 (83-99)
	30	SD RDT IgG	Anti-N-IgG	1	29	97 (83-99)
Overall helminth infections (Strongyloidiasis/Schistosomiasis/Filariasis/Trichinellosis)	160	cPass	Anti-RBD blocking Ab, all subclasses	5	155	97 (93-99)
	160	Abbott Architect	Anti-N-IgG	7	153	96 (91-98)
	160	SD RDT IgM	Anti-N-IgM	7	153	96 (91-98)
	160	SD RDT IgG	Anti-N-IgG	5	155	97 (93-99)
Sera from parasite-suspects negative for all above diseases	60	cPass	Anti-RBD blocking Ab, all subclasses	1	59	98 (91-100)
	60	Abbott Architect	Anti-N-IgG	0	60	100 (92-100)
	60	SD RDT IgM	Anti-N-IgM	0	60	100 (94-100)
	60	SD RDT IgG	Anti-N-IgG	0	60	100 (94-100)

Overall -all samples	559	cPass	Anti-RBD blocking Ab, all	10	549	98 (97-99)
			subclasses			
	548	Abbott Architect	Anti-N-IgG	26	522	95 (93-97)
	559	SD RDT IgM	Anti-N-IgM	30	529	95 (92-96)
	559	SD RDT IgG	Anti-N-IgG	15	544	97 (96-98)

* These specimens were drawn from patients clinically suspected of active disease for the purpose of diagnosis, as opposed to screening of asymptomatic individuals.

^a Wilson score interval binomial 95% confidence intervals presented with Yate's continuity correction applied as appropriate

^b Cut-off used to determine cPass positivity was $\geq 30\%$ inhibition. The cut-off used to determine Abbott Architect positivity was a sample-to-stored-calibrator index (S/C) of ≥ 1.4 .

^c Results were unavailable for 10 of 100 specimens due to insufficient volume.

^d Results were unavailable for 1 of 143 specimens due to insufficient volume.

CI confidence interval; FP false positive; NRCP National Reference Centre for Parasitology; TN true negative.

Table 3. Relative risk of a false positive result by assay and target analyte, according to specimen origin.

PRE-COVID SPECIMEN ORIGIN	Number	Assay	Analyte detected	FP	TN	Risk ratio (95% CI)
Confirmed active or recent malaria by microscopy or RDT (Senegal -endemic area)*	90	Abbott Architect	Anti-N-IgG	8	82	4.44 (0.97-20.38)
	100	SD RDT IgM	Anti-N-IgM	9	91	4.50 (0.997-20.31)
	100	SD RDT IgG	Anti-N-IgG	1	99	0.50 (0.05-5.43)
	100	cPass ^a	Anti-RBD blocking Ab, all subclasses	2	98	Ref.
Patients in whom a separate whole blood specimen was positive for malaria by PCR within the same 14 days (NRCP -non-endemic area)*	142	Abbott Architect	Anti-N-IgG	6	136	6.04 (0.74-49.55)
	143	SD RDT IgM	Anti-N-IgM	12	131	12.00 (1.58-91.07)
	143	SD RDT IgG	Anti-N-IgG	4	139	4.00 (0.45-35.35)
	143	cPass	Anti-RBD blocking Ab, all subclasses	1	142	Ref.
Overall Malaria (Senegal and NRCP)	232	Abbott Architect	Anti-N-IgG	14	218	4.89 (1.42-16.79)
	243	SD RDT IgM	Anti-N-IgM	21	222	7.00 (2.11-23.16)
	243	SD RDT IgG	Anti-N-IgG	5	238	1.67 (0.40-6.90)
	243	cPass ^a	Anti-RBD blocking Ab, all subclasses	3	240	Ref.
Visceral leishmaniasis *	5	Abbott Architect	Anti-N-IgG	0	5	-
	5	SD RDT IgM	Anti-N-IgM	0	5	-
	5	SD RDT IgG	Anti-N-IgG	1	4	-

	5	cPass	Anti-RBD blocking Ab, all subclasses	0	5	Ref.
Human African trypanosomiasis*	42	Abbott Architect	Anti-N-IgG	5	37	5.00 (0.61-40.99)
	42	SD RDT IgM	Anti-N-IgM	2	40	2.00 (0.19-21.22)
	42	SD RDT IgG	Anti-N-IgG	0	42	0
	42	cPass	Anti-RBD blocking Ab, all subclasses	1	41	Ref.
<i>Trypanosoma cruzi</i> seropositivity	49	Abbott Architect	Anti-N-IgG	0	49	-
	49	SD RDT IgM	Anti-N-IgM	0	49	-
	49	SD RDT IgG	Anti-N-IgG	4	45	-
	49	cPass	Anti-RBD blocking Ab, all subclasses	0	49	Ref.
Overall protozoan parasitic infections (Malaria/leishmaniasis/trypanosomiasis)	328	Abbott Architect	Anti-N-IgG	19	309	4.91 (1.69-14.28)
	339	SD RDT IgM	Anti-N-IgM	23	316	5.75 (2.01-16.45)
	339	SD RDT IgG	Anti-N-IgG	10	329	2.50 (0.79-7.89)
	339	cPass	Anti-RBD blocking Ab, all subclasses	4	335	Ref.
<i>Strongyloides stercoralis</i> seropositivity	50	Abbott Architect	Anti-N-IgG	1	49	0.50 (0.05-5.34)
	50	SD RDT IgM	Anti-N-IgM	1	49	0.50 (0.05-5.34)
	50	SD RDT IgG	Anti-N-IgG	1	49	0.50 (0.05-5.34)
	50	cPass	Anti-RBD blocking Ab, all subclasses	2	48	Ref.

<i>Schistosoma</i> sp. seropositivity	40	Abbott Architect	Anti-N-IgG	2	38	2.00 (0.19-21.18)
	40	SD RDT IgM	Anti-N-IgM	3	37	3.00 (0.32-27.63)
	40	SD RDT IgG	Anti-N-IgG	1	39	1.00 (0.06-15.44)
	40	cPass	Anti-RBD blocking Ab, all subclasses	1	39	Ref.
<i>Filaria</i> sp. seropositivity	40	Abbott Architect	Anti-N-IgG	3	37	1.50 (0.26-8.50)
	40	SD RDT IgM	Anti-N-IgM	2	38	1.00 (0.15-6.75)
	40	SD RDT IgG	Anti-N-IgG	2	38	1.00 (0.15-6.75)
	40	cPass	Anti-RBD blocking Ab, all subclasses	2	38	Ref.
Trichinellosis* (<i>Trichinella</i> sp.)	30	Abbott Architect	Anti-N-IgG	1	29	-
	30	SD RDT IgM	Anti-N-IgM	1	29	-
	30	SD RDT IgG	Anti-N-IgG	1	29	-
	30	cPass	Anti-RBD blocking Ab, all subclasses	0	30	Ref.
Overall helminth infections (Strongyloides/Schistosomiasis/Filaria/Trichinella)	160	Abbott Architect	Anti-N-IgG	7	153	1.40 (0.45-4.32)
	160	SD RDT IgM	Anti-N-IgM	7	153	1.40 (0.45-4.32)
	160	SD RDT IgG	Anti-N-IgG	5	155	1.00 (0.29-3.39)
	160	cPass	Anti-RBD blocking Ab, all subclasses	5	155	Ref.
Sera from parasite-suspects negative for all above pathogens	60	Abbott Architect	Anti-N-IgG	0	60	-
	60	SD RDT IgM	Anti-N-IgM	0	60	-

	60	SD RDT IgG	Anti-N-IgG	0	60	-
	60	cPass	Anti-RBD blocking Ab, all subclasses	1	59	Ref.
Overall -all samples	548	Abbott Architect	Anti-N-IgG	26	522	2.65 (1.29-5.45)
	559	SD RDT IgM	Anti-N-IgM	30	529	3.00 (1.48-6.08)
	559	SD RDT IgG	Anti-N-IgG	15	544	1.50 (0.68-3.31)
	559	cPass	Anti-RBD blocking Ab, all subclasses	10	549	Ref.

* These specimens were drawn from patients clinically suspected of active disease for the purpose of diagnosis, as opposed to screening of asymptomatic individuals.

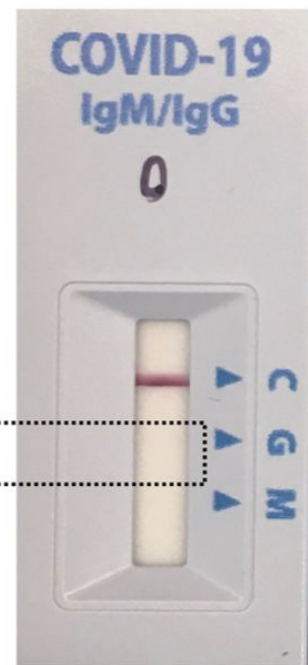
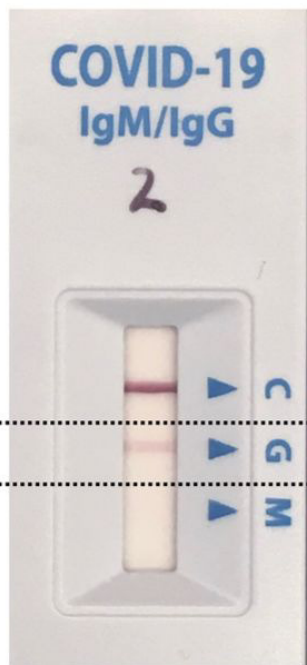
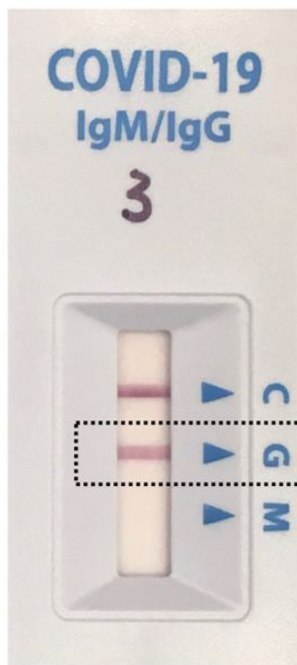
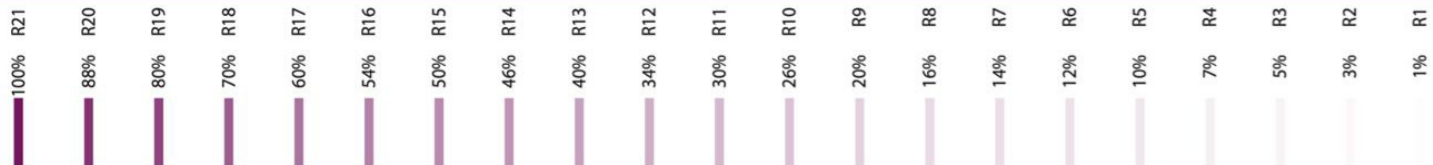
^a Cut-off used to determine cPass positivity was $\geq 30\%$ inhibition. The cut-off used to determine Abbott Architect positivity was a sample-to-stored-calibrator index (S/C) of ≥ 1.4 .

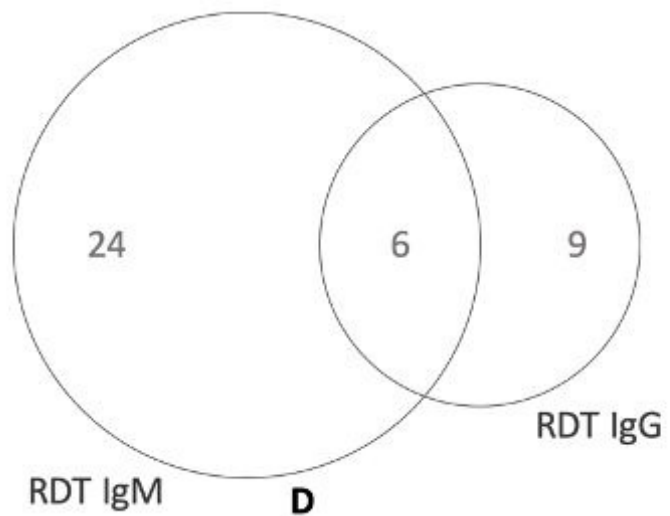
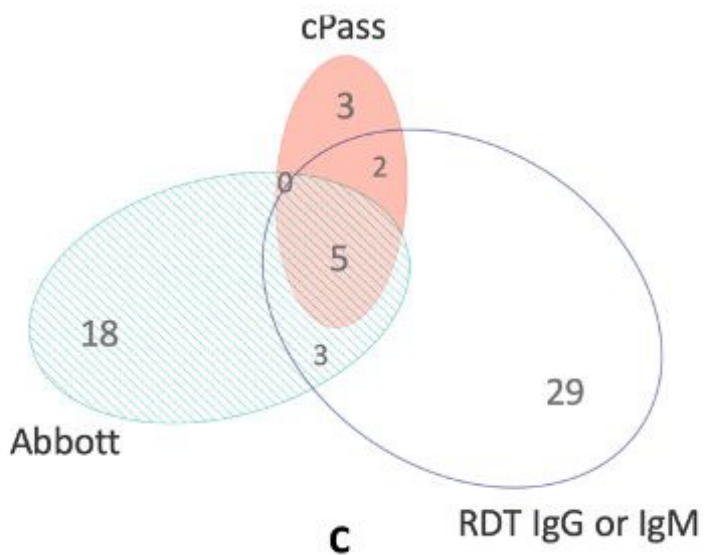
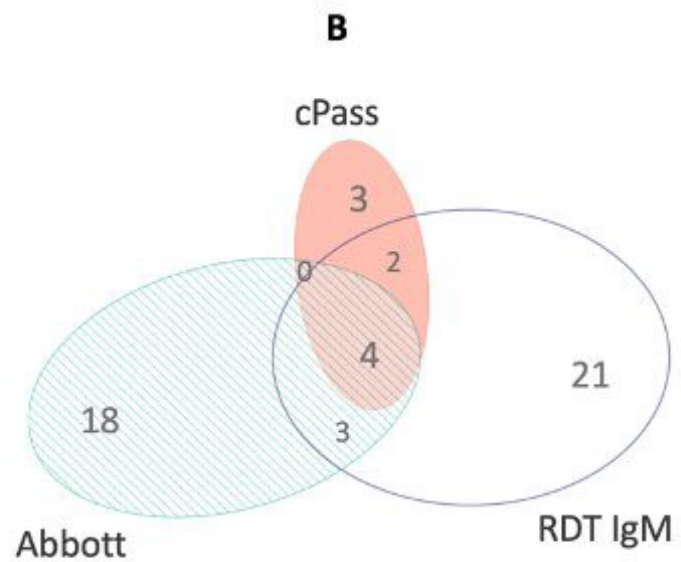
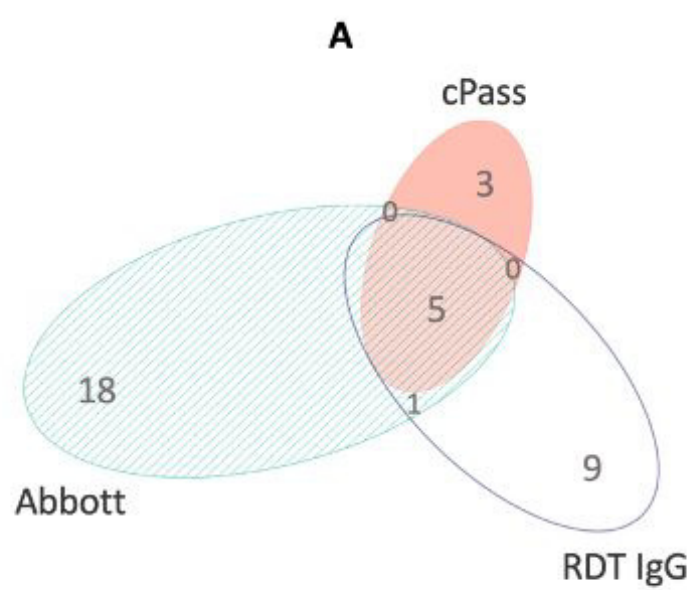
CI confidence interval; FP false positive; IgG Immunoglobulin G; IgM Immunoglobulin M; NRCP National Reference Centre for Parasitology; Ref. Reference; TN true negative.

COLOR SCALE

REF: REF-10
LOT: REF1020001
EXP1: Jul. 2023

Serial No:
EXP2:





Pre-COVID specimen origin	Specimen number	cPass % inhibition	Abbott Signal-to-cutoff ratio	SD RDT IgG band intensity	SD RDT IgM band intensity
Confirmed active or recent malaria by microscopy or RDT (Senegal -endemic area)	#1	6.57	1.03	0	0
	#2	0.28	1.14	0	0
	#3	-0.89	1.26	0	0
	#4	11.09	0.31	0	2
	#5	7.85	0.26	0	1
	#6	5.26	2.95	0	0
	#7	5.81	0.07	0	1
	#8	4.26	0.51	0	1
	#9	-10.00	1.37	0	0
	#10	-7.20	0.13	0	1
	#11	4.30	0.21	0	1
	#12	9.04	1.42	0	0
	#13	-0.98	0.31	0	1
	#14	-9.19	0.26	0	1
	#15	31.52	0.66	0	2
	#16	55.52	3.29	3	0
	Patients in whom a separate whole blood specimen was positive for malaria by PCR within the same 14 days (NRCP -non-endemic area)	#17	28.46	1.52	0
#18		30.90	0.68	0	0
#19		-14.18	1.05	0	0
#20		7.97	1.08	0	0
#21		10.59	1.02	0	0
#22		29.07	0.12	1	0
#23		11.38	1.31	0	2
#24		18.13	0.45	0	2
#25		3.91	0.26	0	1
#26		-17.52	0.09	2	0
#27		11.95	0.11	0	2
#28		10.01	0.21	0	1
#29		22.43	1.09	0	0
#30		-8.15	0.07	0	1
#31		-9.05	0.61	2	1
#32		2.86	0.14	0	1
#33		-9.47	0.14	0	1
#34		28.77	1.26	3	1
#35		-8.48	0.31	0	1
#36		-7.49	0.11	0	1
Visceral leishmaniasis	#37	-2.35	0.11	3	0
Human African trypanosomiasis	#38	6.73	1.92	0	2
	#39	11.93	1.32	0	0
	#40	39.10	0.62	0	1
	#41	5.12	1.04	0	0
	#42	11.63	1.02	0	0
	#43	3.60	1.39	0	0
	Human American trypanosomiasis	#44	6.40	0.19	2
#45		10.30	0.21	2	0
#46		-5.36	0.07	1	0
#47		-10.72	0.06	1	0
Strongyloidiasis	#48	33.42	0.10	0	0
	#49	94.12	5.32	3	2
Schistosomiasis	#50	12.40	1.49	0	0
	#51	50.30	1.69	2	2
	#52	15.99	0.04	0	1
	#53	5.51	0.09	0	1
Filariasis	#54	21.89	1.13	0	0
	#55	50.40	1.84	3	2
	#56	67.92	2.96	1	3
Trichinellosis	#57	5.76	0.05	0	1
	#58	22.57	0.02	1	0
	#59	5.88	3.77	0	0
Sera from parasite-suspects negative for all above diseases	#60	31.61	0.04	0	0