

Severity of respiratory failure and computed chest tomography in acute COVID-19 correlates with pulmonary function and respiratory symptoms after infection with SARS-CoV-2: an observational longitudinal study over 12 months

Fridolin Steinbeis, Charlotte Thibeault, Felix Doellinger, Raphaela Maria Ring, Mirja Mittermaier, Christoph Ruwwe-Glösenkamp, Florian Alius, Philipp Knape, Hans-Jakob Meyer, Lena Johanna Lippert, Elisa Theresa Helbig, Daniel Grund, Bettina Temmesfeld-Wollbrück, Norbert Suttorp, Leif Erik Sander, Florian Kurth, Tobias Penzkofer, Martin Witzenrath, Thomas Zoller

Supplementary Material

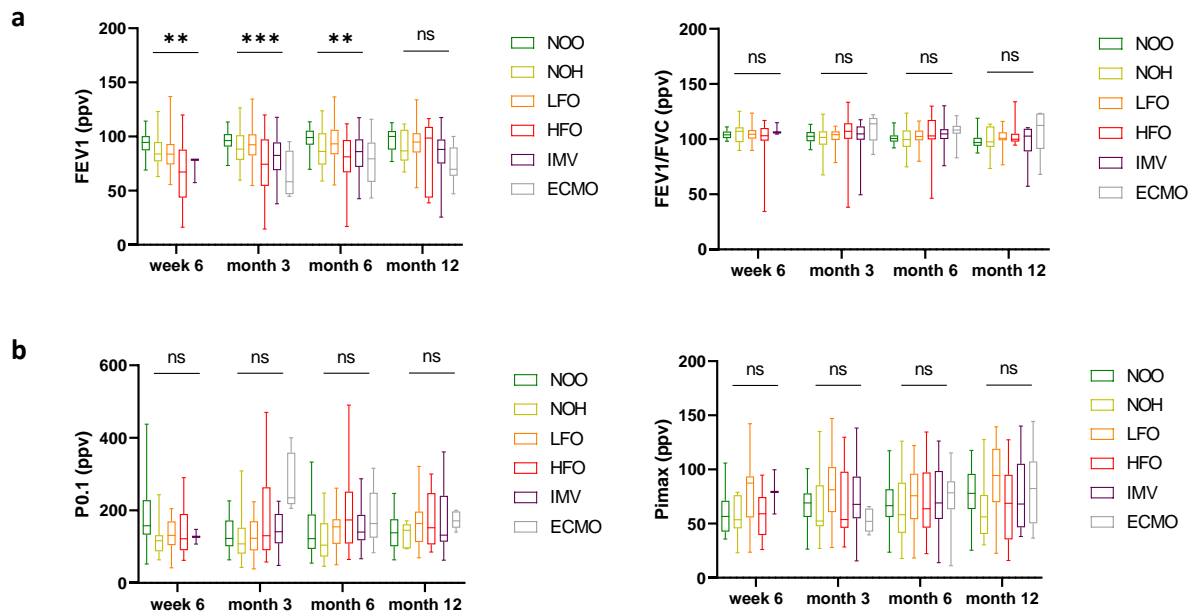


Figure s1: Pulmonary obstruction and respiratory muscle testing is independent of COVID disease severity. a) Median Tiffeneau index (FEV1/FVC) remains constant post-acute COVID-19 after different courses of acute infection. FEV1 decrease amongst patients with HFO, IMV and ECMO is explained by reduction in FVC (s. Figure 1). b) No statistical significant difference regarding the mechanical index of respiratory drive or airway occlusion pressure (P0.1) and inspiratory muscle strength (Pimax) between different disease groups were detected.

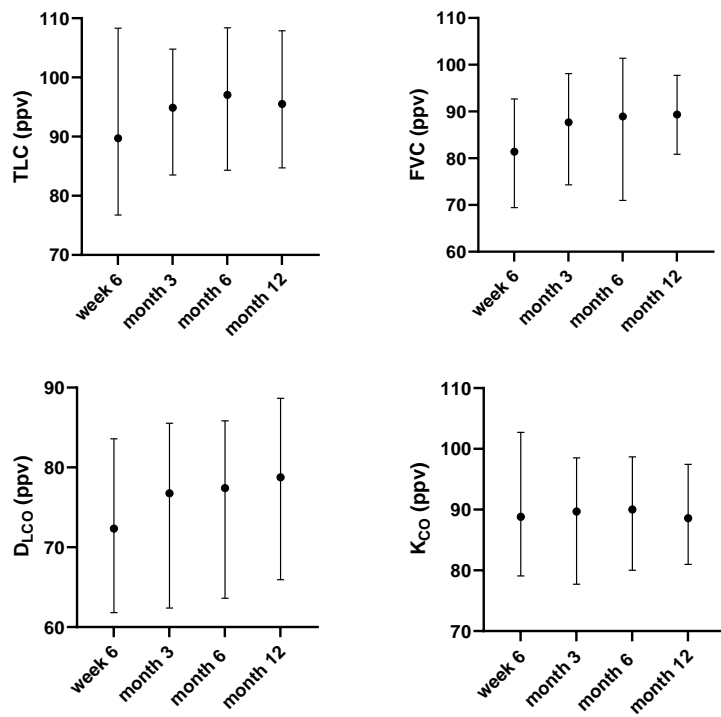


Figure s2: Median TLC, FVC and D_{LCO} of all patients improved during early reconvalescence up to month 6, with no further improvement between month 6 and 12. This was not observed for K_{CO}.

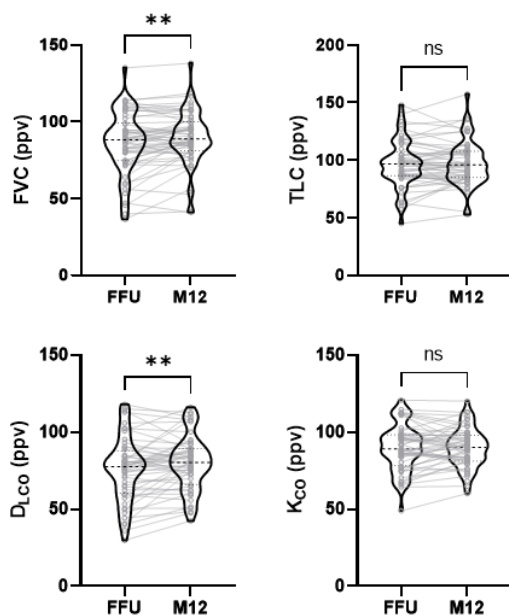


Figure s3: Parameters of pulmonary restriction and impaired diffusion capacity over time in all patients between first follow-up up and month 12. FVC and D_{LCO} showed significant improvements in all patients during follow-up until month 12. (Abbreviations: FFU – first follow-up, M12 – month 12 follow-up)

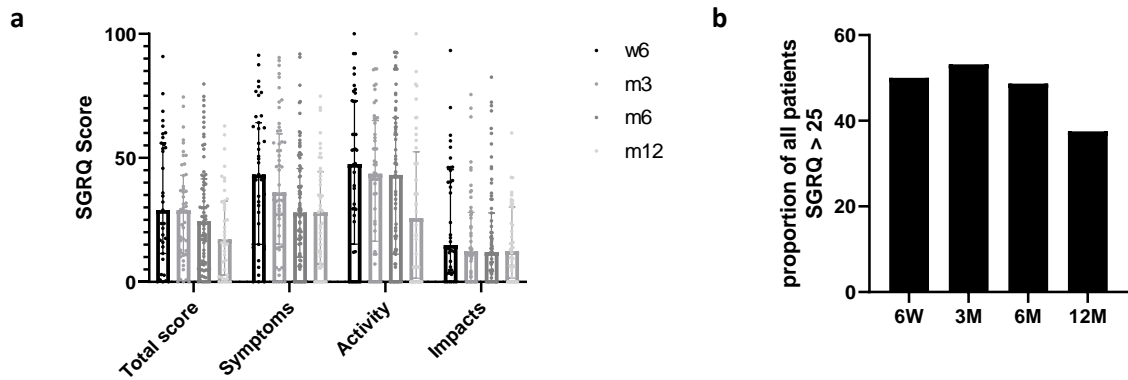


Figure s4: SGRQ total and subscore over time: **a)** Within early follow up, no improvement was seen between week 6 and month 3, with a median score of 28.93 [IQR 11.43-55.92] at week 6 post symptom onset and 28.93 [11.51-42.95] at month 3, with a reduction hereafter at month 6 and month 12 (24.48 [6.91-41.58]; 17.14 [2.70-32.59]). **b)** Proportion of all patients with an SGRQ score > 25 over time confirm this trend with a decrease after 6 month follow-up.

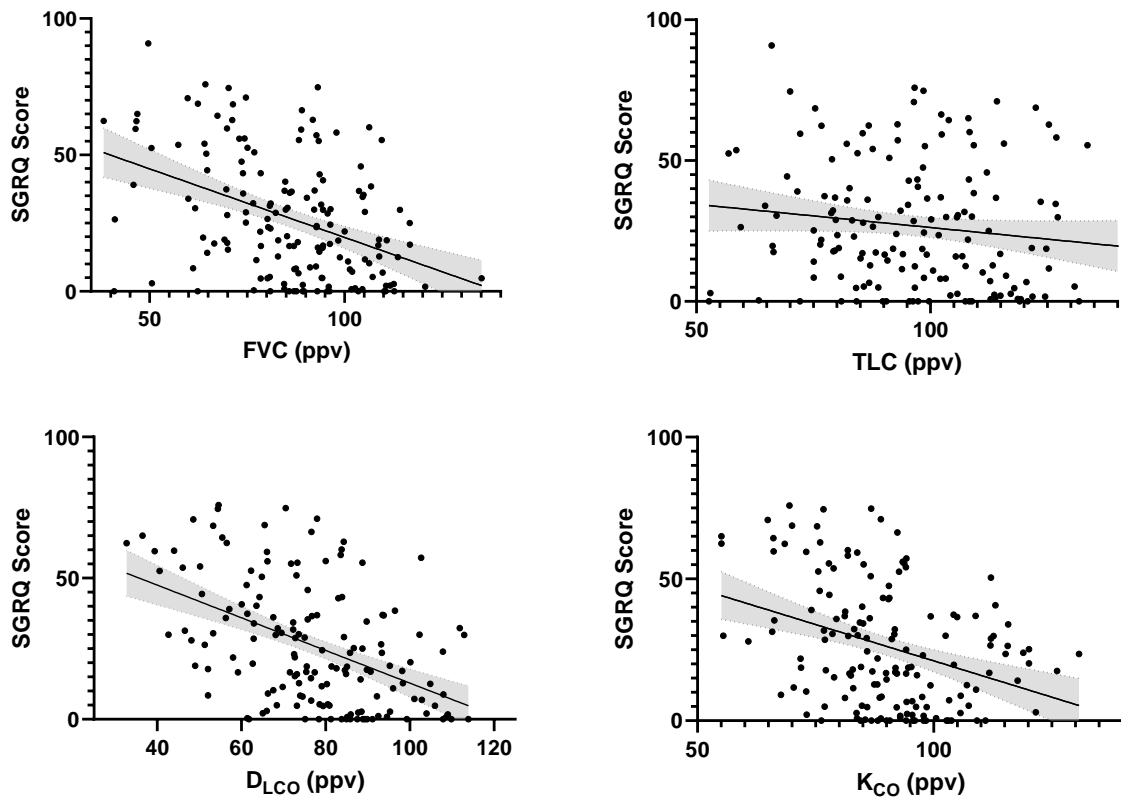


Figure s5: Linear regression analysis of total SGRQ Score and pulmonary function post-acute COVID-19: A negative correlation, that is significant for FVC, DLCO and KCO describes a higher SGRQ score in patients with distorted diffusion capacity or reduced FVC. For every 10% improvement in DLCO, KCO and FVC, estimated SGRQ improves by 6, 5 and 5 points respectively. SGRQ results of all time-points were matched with respective pulmonary function tests.

	NOO			NOH			LFO			HFO			IMV			ECMO		
DLCO w6	83.79	97.27	72.81	66.17	86.11	61.63	73.49	80.99	63.81	65.55	74.76	48.30	53.26	56.29	46.27			
DLCO m3	83.00	88.24	76.49	78.53	89.73	72.41	78.27	90.15	65.35	61.27	78.59	48.59	58.88	71.18	49.37	54.57	77.86	34.89
DLCO m6	82.66	93.53	77.77	81.23	87.73	71.27	80.31	92.89	70.77	62.67	78.43	52.30	67.56	77.42	58.37	59.04	63.61	36.19
DLCO m12	82.77	90.36	77.245	88.425	93.67	74.52	78.09	103.285	66.80	78.75	96.26	49.53	75.21	79.09	59.98	58.96	75.46	44.98
KCO w6	93.78	104.19	82.14	86.16	92.32	69.22	92.86	112.61	84.43	78.81	95.55	69.73	84.03	93.06	79.43			
KCO m3	86.685	93.782	78.00	88.38	97.46	78.547	96.58	105.75	87.55	88.98	100.00	65.00	89.70	98.55	76.52	75.01	84.03	53.70
KCO m6	90.20	103.25	80.52	89.61	98.67	83.24	92.12	99.05	85.90	88.17	107.45	73.36	94.64	98.54	77.17	74.14	84.89	66.42
KCO m12	84.14	97.06	78.565	89.095	103.00	88.11	87.40	95.33	79.88	97.04	109.51	72.85	94.37	100.89	83.28	81.20	90.56	66.5
FEV1 w6	95.54	100.73	89.26	83.99	94.97	77.02	83.69	93.08	74.20	73.08	89.87	43.31	68.04	78.63	55.68			
FEV1 m3	96.22	102.17	90.83	88.43	101.28	78.44	91.92	101.79	81.04	76.92	101.53	53.17	77.46	90.67	65.25	59.58	89.64	46.08
FEV1 m6	99.69	105.44	92.02	85.28	101.93	73.95	94.37	106.75	83.37	80.81	102.10	64.08	86.03	96.92	71.84	78.44	95.24	58.98
FEV1 m12	102.55	108.55	88.23	83.44	107.65	76.71	94.75	105.36	85.07	98.65	112.77	66.61	88.15	96.60	66.53	81.30	94.98	67.08
FEV1/FVC w6	103.87	106.94	100.85	107.1	110.73	97.20	104.35	108.24	100.48	101.59	107.26	98.29	110.4	115.17	104.95			
FEV1/FVC m3	102.61	106.39	98.04	101.50	107.09	94.97	104.00	106.98	99.24	105.77	114.48	99.53	104.76	112.13	99.49	117.10	120.11	106.87
FEV1/FVC m6	100.66	103.71	97.75	98.76	107.68	90.52	102.38	107.75	99.33	102.55	120.82	99.23	104.8	109.03	101.42	108.10	112.04	102.61
FEV1/FVC m12	95.62	100.35	93.66	96.86	107.99	92.01	101.59	106.3	98.75	101.98	119.40	98.78	104.82	109.63	90.81	112.36	118.59	97.69
FVC w6	91.91	99.33	85.79	81.21	91.13	75.50	80.71	90.15	68.57	68.50	84.46	52.14	61.83	74.64	48.14			
FVC m3	94.01	101.99	87.83	89.35	99.75	82.87	88.50	99.32	81.69	69.23	92.32	50.51	78.38	88.97	61.99	50.34	78.60	40.97
FVC m6	95.91	104.88	92.31	89.61	97.19	77.95	93.59	105.07	80.24	68.66	101.32	60.60	80.23	90.74	68.74	75.08	87.88	54.93
FVC m12	102.69	109.54	87.5	92.50	98.77	80.93	93.38	98.20	84.31	89.37	107.62	61.15	87.29	89.43	66.72	79.72	88.26	63.25
TLC w6	109.27	124.08	99.98	87.78	107.43	81.50	87.27	95.93	78.63	82.11	102.37	60.63	70.92	80.59	59.22			
TLC m3	103.45	114.53	92.46	102.15	113.84	92.21	94.88	104.09	86.56	86.81	96.46	75.07	76.69	93.11	71.40	76.01	86.83	59.24
TLC m6	112.75	123.58	98.99	105.66	117.94	89.16	98.44	103.98	88.37	75.37	107.34	70.67	84.87	92.49	74.10	83.53	92.78	70.70
TLC m12	112.33	123.32	94.085	107.23	108.14	104.79	92.85	103.53	80.80	87.53	110.67	68.95	84.60	95.91	70.49	85.08	90.89	82.37

Table s1: Median (bold) (IQR) of patients of different disease severity groups during 6 week, 3, 6 and 12 month follow up. First column in each group shows the median, second the upper IQR limit, third row the lower IQR limit. Abbreviations: w6 – week 6; m3 – month 3; m6 – month 6; m12 – month 12

CT-Score	<i>r</i>	<i>R</i> ²	<i>p</i>
TLC	-0.44	0.19	<0.0001
FVC	-0.30	0.089	0.0056
D _{Lco}	-0.30	0.090	0.0065
K _{co}	-0.13	0.016	0.2440

Table s2: Pearson correlation coefficient for acute COVID-19 pulmonary involvement as determined by CT-chest score and pulmonary function test parameter during convalescence.

Fatigue/exhaustion/excessive tiredness
Loss of appetite
Apraxia
Ataxia
Abdominal pain
Disturbance of consciousness/confusion/disorientation
Conjunctivitis
Bleeding
Chest pain
Diarrhoea
Vomiting
Facial paresis
Fever
Gait disorder
Memory impairment
Sensory disturbance
Joint pain
Sore throat
Skin changes
Cough
Wheezing
Headache
Seizures
Shortness of breath
Paralysis/paresis
Runny nose
Swelling of the lymph nodes
Muscle reflexes (conspicuously reduced/increased)
Muscle pain
Neglect
Neuralgia
Sneezing
Earache
Pyramidal tract signs (positive)
Swallowing disorders
Dizziness
Impaired vision
Speech disorders (aphasia)
Speech disorders (dysarthria)
Disturbances in eye movements
Nausea
Altered sense of smell or taste
Stuffy nose
Other symptoms

Table s3: Symptom List of 43 items was assessed at every follow-up study visit